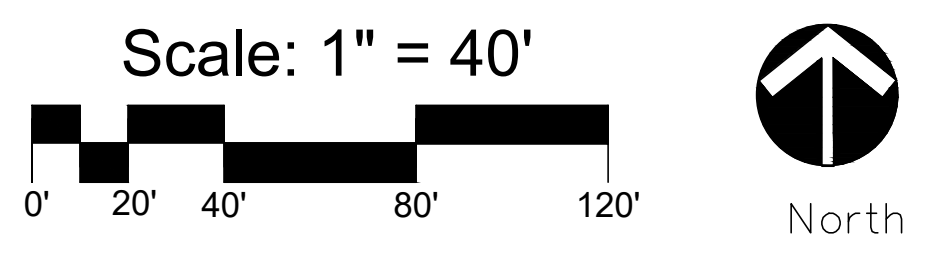


PLAT NO.
PAGE 37

LP-2
LP-7



**HJ A DESIGN
STUDIO**
LANDSCAPE ARCHITECTURE

50 E. Ocean Blvd., Suite 101
Stuart, Florida 34994

T 772.678.7200
F 772.678.7201

www.hjadesignstudio.com
LA 0000905

Florida
Cheney Brother's
 City of Port Saint Lucie
 MPUD - Preliminary Landscape Plan

**Future
Expansion
105,900 Sf +/-**

**Distribution Center
+/- 367,427 Sf
F.F.E.: 32.5'
Height: 47'**

Copyright
The following drawings are instruments of service to the Landscape Architect. They are not products of design. All ideas, designs, arrangements, and plans indicated or represented by this drawing are owned by and the property of the designer, and were created, evolved, and developed for use on and in connection with the specified project. None of such ideas, designs, arrangements, or plans shall be used by or disclosed to any person, firm, or corporation for any purpose whatsoever without the written permission of the designer.

Job No.	2020-03
Drawn By	EB
Checked By	MH
Approved By	MH
Submittal Dates	12/20/21

Revision Dates 1/07/22

LP-2

Project Number P21-279
PSLUSD Project Number 5382

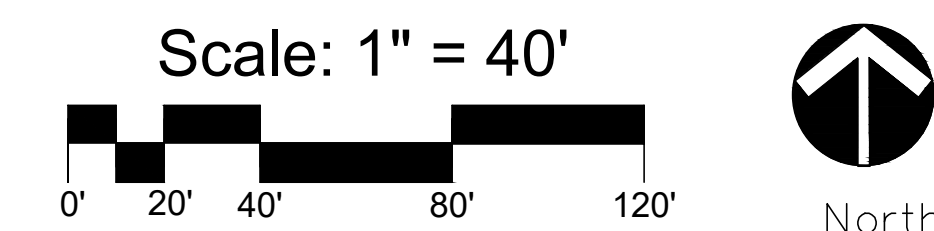
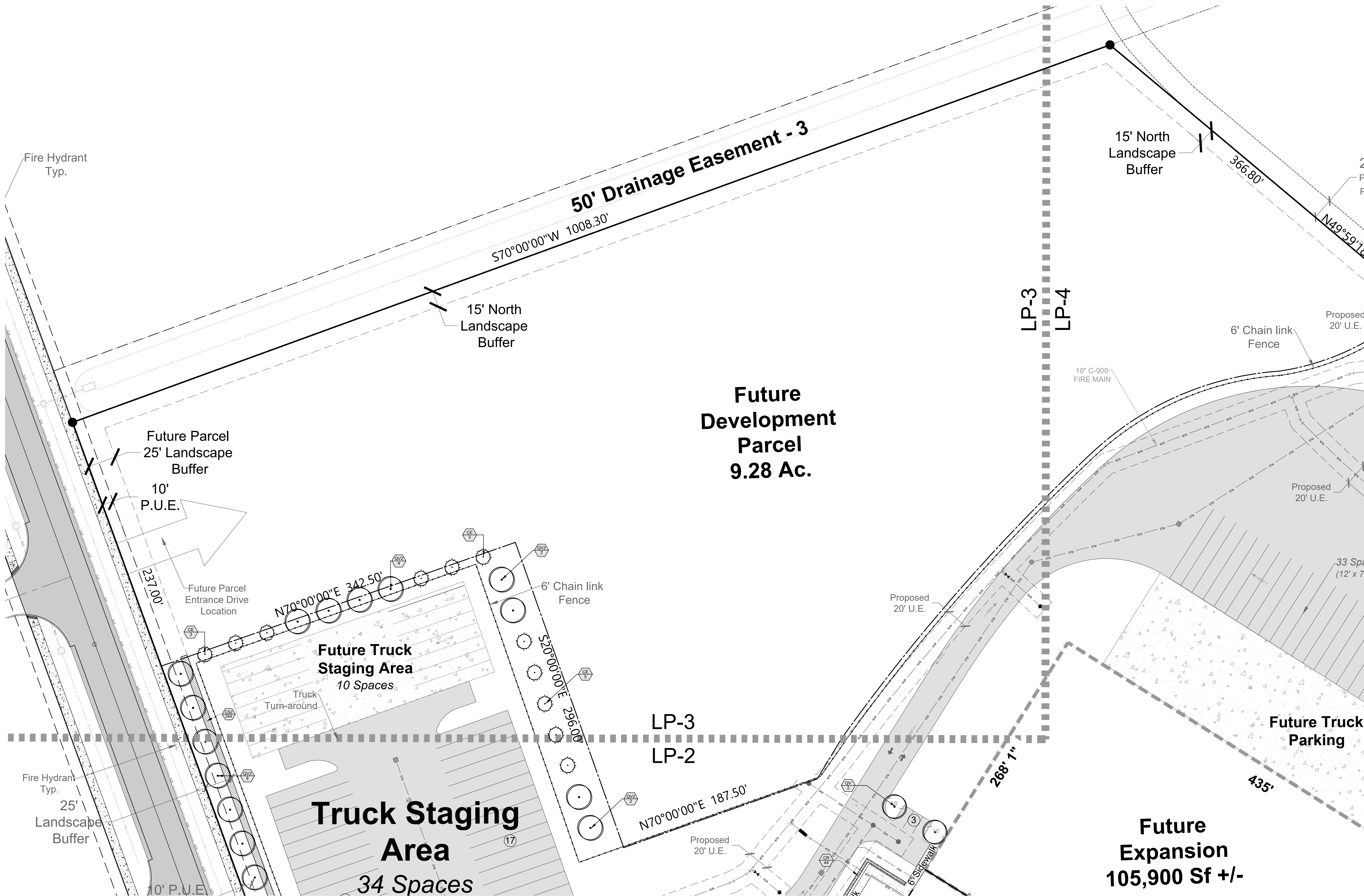
Copyright
The following drawings are instruments of service to the Landscape Architect. They are not products of design. All ideas, designs, arrangements, and plans indicated or represented by this drawing are owned by and the property of the designer, and were created, evolved, and developed for use on and in connection with the specified project. None of such ideas, designs, arrangements, or plans shall be used by or disclosed to any person, firm, or corporation for any purpose whatsoever without the written permission of the designer.

Job No.	2020-03
Drawn By	EB
Checked By	MH
Approved By	MH
Submittal Dates	12/20/21

Revision Dates 1/07/22

LP-3

Project Number P21-279
PSLUSD Project Number 5382



Copyright
The following drawings are instruments of service to the Landscape Architect. They are not products of design. All ideas, designs, arrangements, and plans indicated or represented by this drawing are owned by and the property of the designer, and were created, evolved, and developed for use on and in connection with the specified project. None of such ideas, designs, arrangements, or plans shall be used by or disclosed to any person, firm, or corporation for any purpose whatsoever without the written permission of the designer.

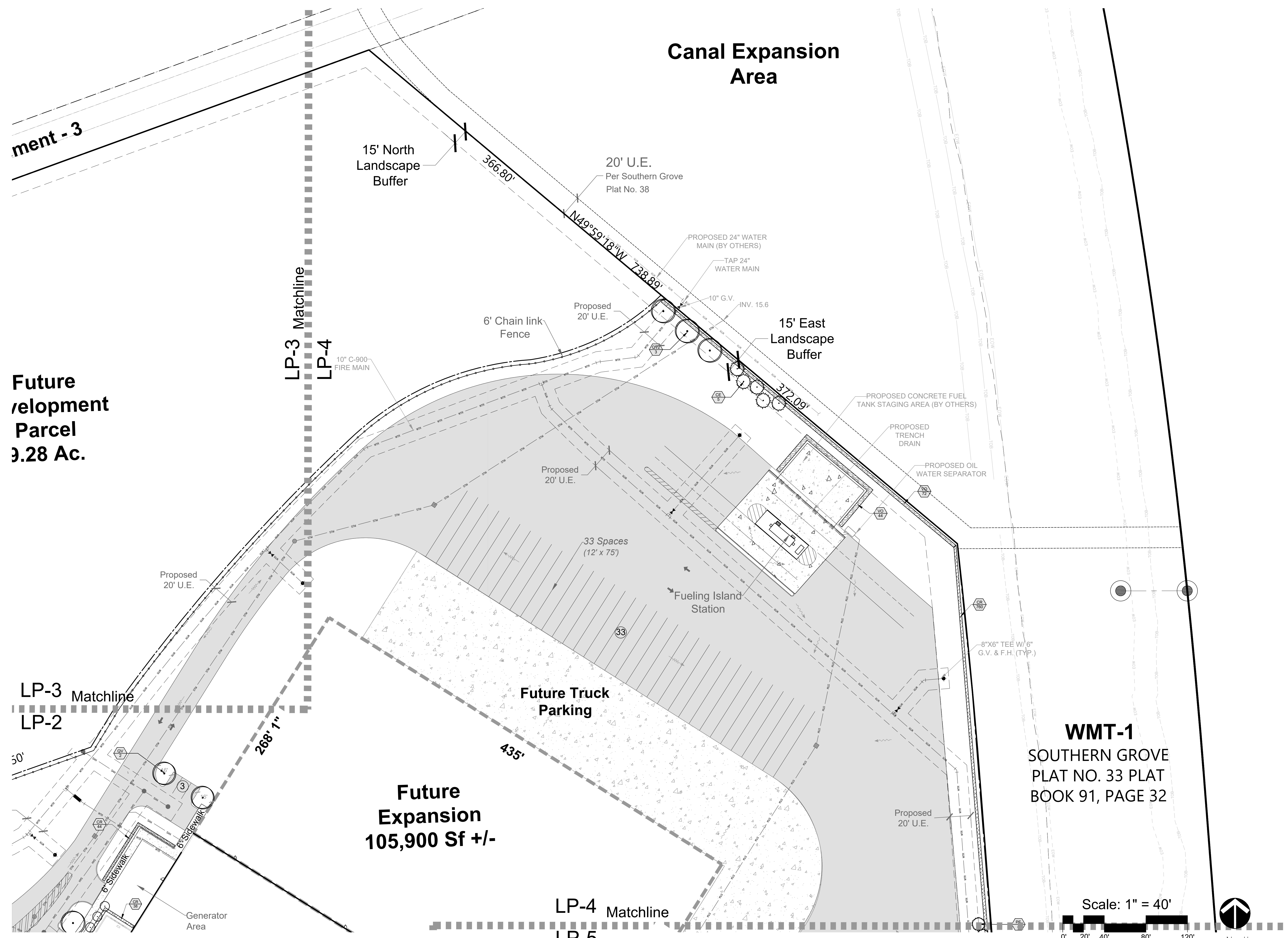
Job No.	2020-03
Drawn By	EB
Checked By	MH
Approved By	MH
Submittal Dates	12/20/21

Revision Dates 1/07/22

LP-4

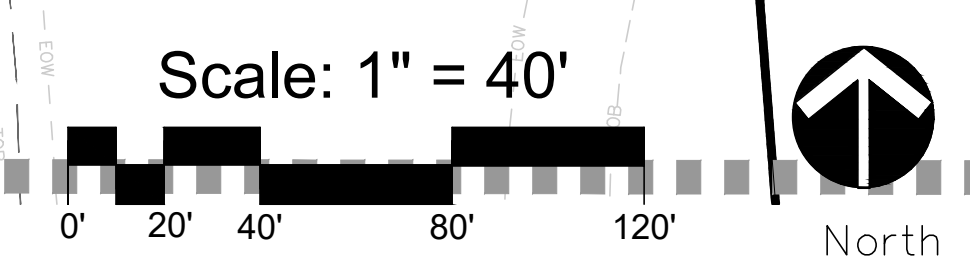
Project Number P21-279
PSLUSD Project Number 5382

Canal Expansion Area

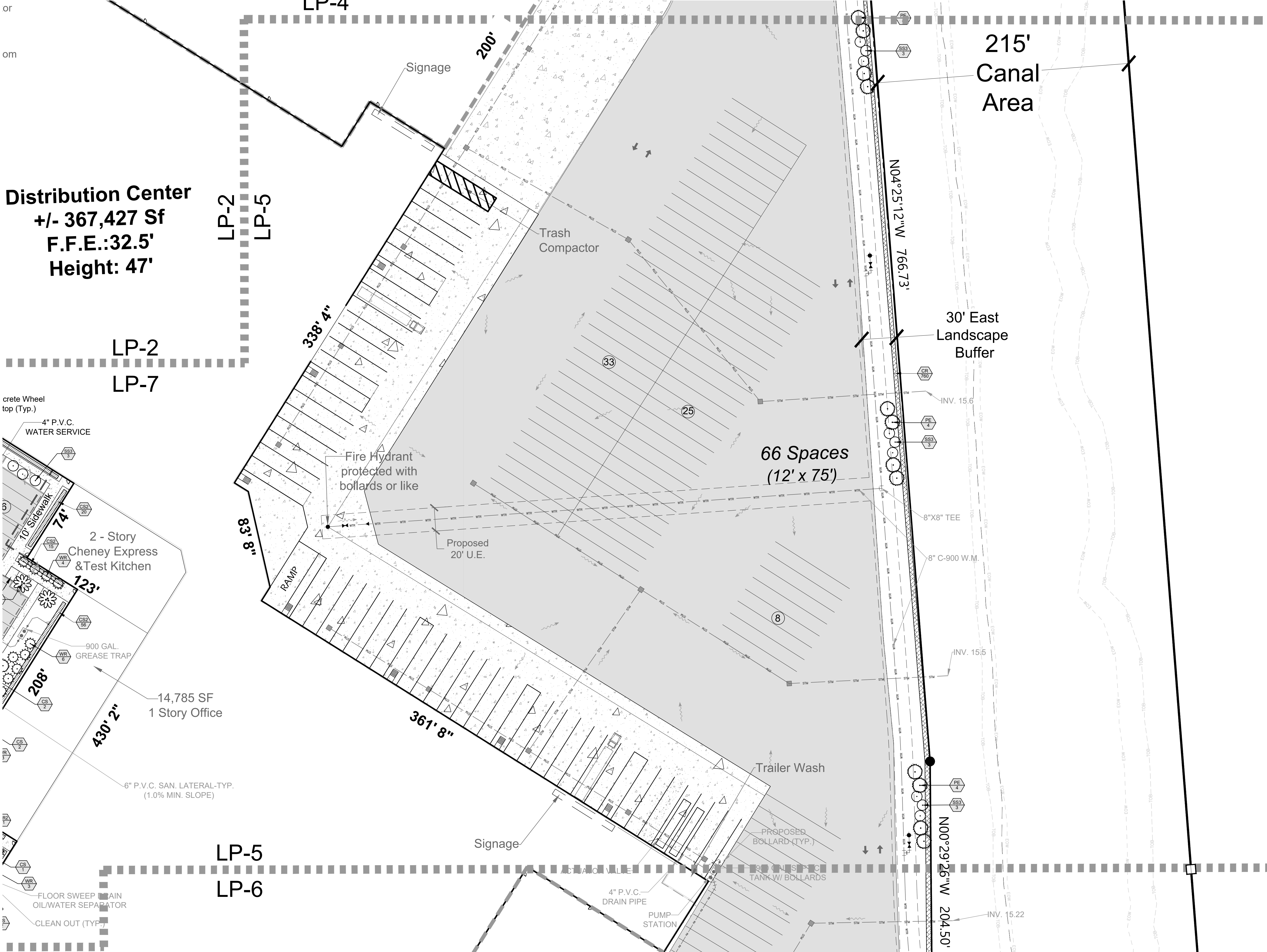


**Future
Development
Parcel
0.28 Ac.**

WMT-1
SOUTHERN GROVE
PLAT NO. 33 PLAT
BOOK 91, PAGE 32



LP-4 Matchline
LP-5



Distribution Center
 +/- 367,427 Sf
 F.F.E.:32.5'
 Height: 47'

LP-2
 LP-7

crete Wheel top (Typ.)
 4" P.V.C. WATER SERVICE
 2 - Story Cheney Express & Test Kitchen
 14,785 SF 1 Story Office
 6" P.V.C. SAN. LATERAL-TYP. (1.0% MIN. SLOPE)

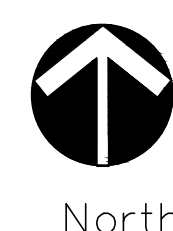
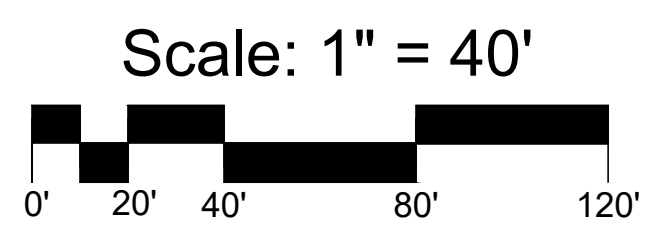
LP-5
 LP-6

215'
 Canal Area

30' East Landscape Buffer

66 Spaces (12' x 75')

Trailer Wash



HJ A DESIGN STUDIO
 LANDSCAPE ARCHITECTURE
 50 E. Ocean Blvd., Suite 101
 Stuart, Florida 34994
 T 772.678.7200
 F 772.678.7201
 www.hjadesignstudio.com
 LA 0000905

Cheney Brother's
 City of Port Saint Lucie
 MPUD - Preliminary Landscape Plan

Copyright
 The following drawings are instruments of service to the Landscape Architect. They are not products of design. All ideas, designs, arrangements, and plans indicated or represented by this drawing are owned by and the property of the designer, and were created, evolved, and developed for use on and in connection with the specified project. None of such ideas, designs, arrangements, or plans shall be used by or disclosed to any person, firm, or corporation for any purpose whatsoever without the written permission of the designer.

Job No.	2020-03
Drawn By	EB
Checked By	MH
Approved By	MH
Submittal Dates	12/20/21
Revision Dates	1/07/22

LP-5
 Project Number P21-279
 PSLUSD Project Number 5382

Florida
City of Port Saint Lucie
MPUD - Preliminary Landscape Plan

Cheney Brother's

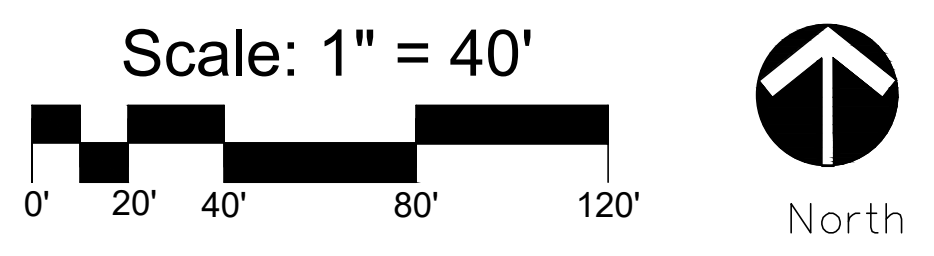
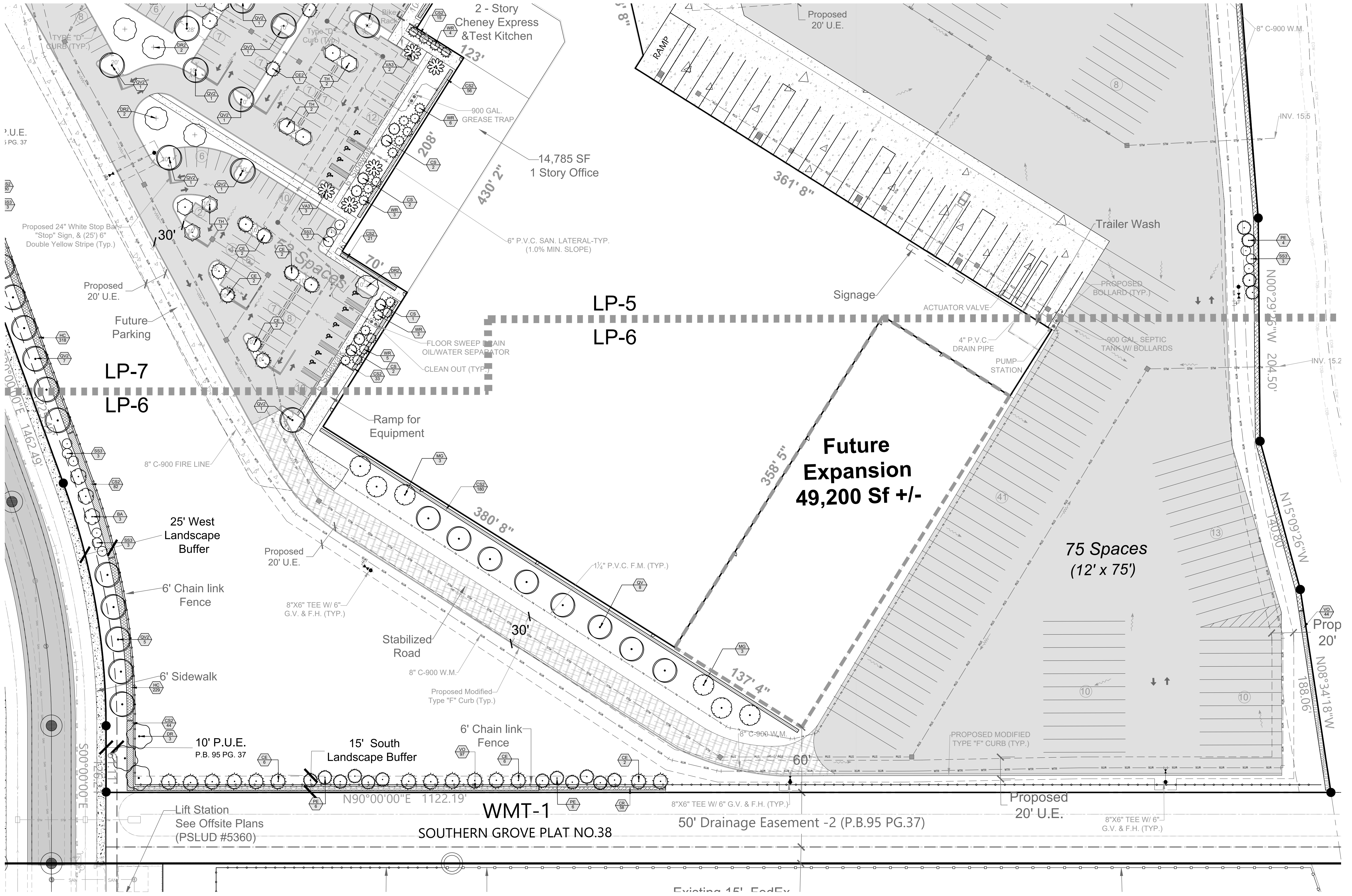
Copyright
The following drawings are instruments of service to the Landscape Architect. They are not products of design. All ideas, designs, arrangements, and plans indicated or represented by this drawing are owned by and the property of the designer, and were created, evolved, and developed for use on and in connection with the specified project. None of such ideas, designs, arrangements, or plans shall be used by or disclosed to any person, firm, or corporation for any purpose whatsoever without the written permission of the designer.

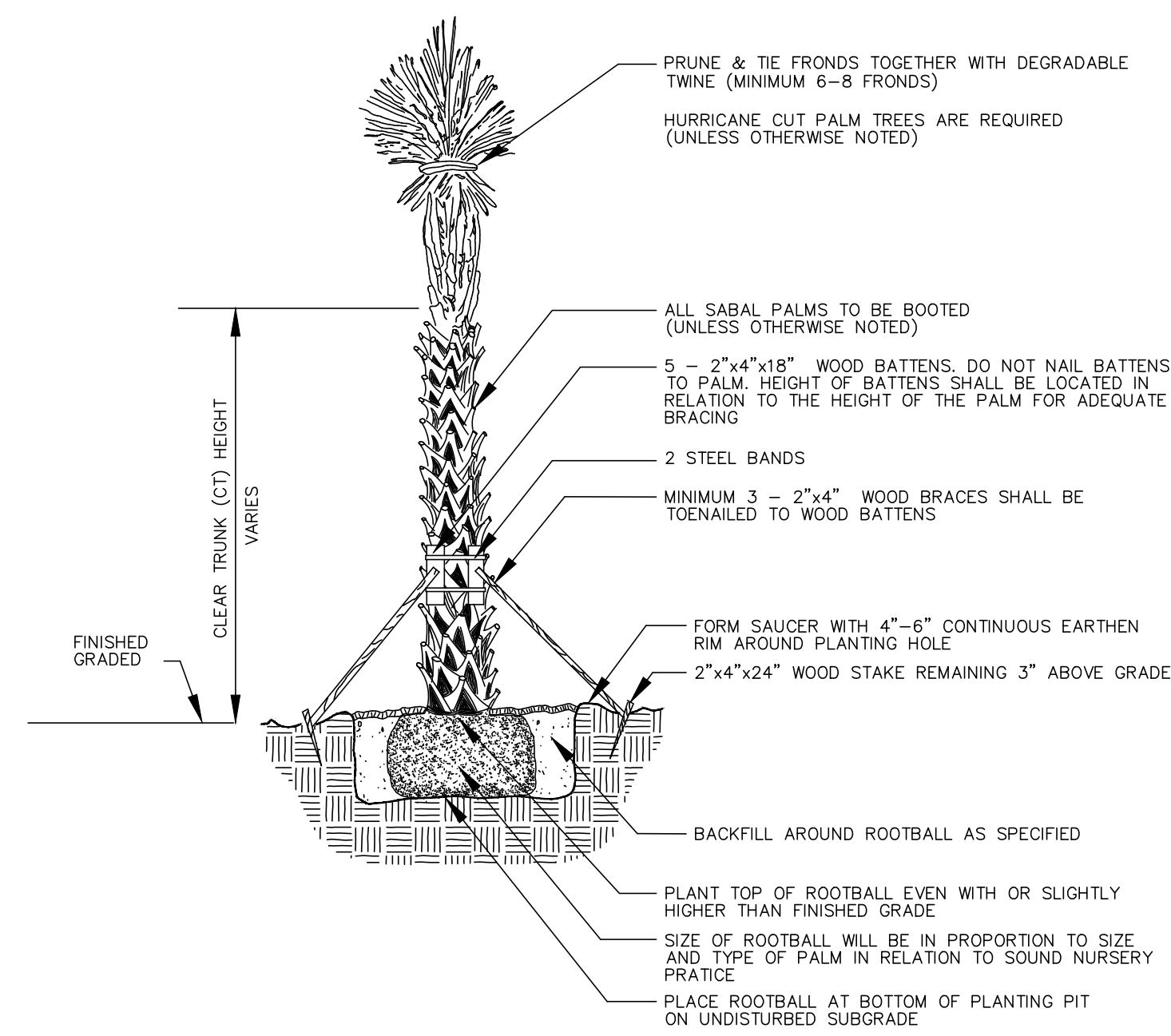
Job No.	2020-03
Drawn By	EB
Checked By	MH
Approved By	MH
Submission Dates	12/20/21

Revision Dates 1/07/22

LP-6

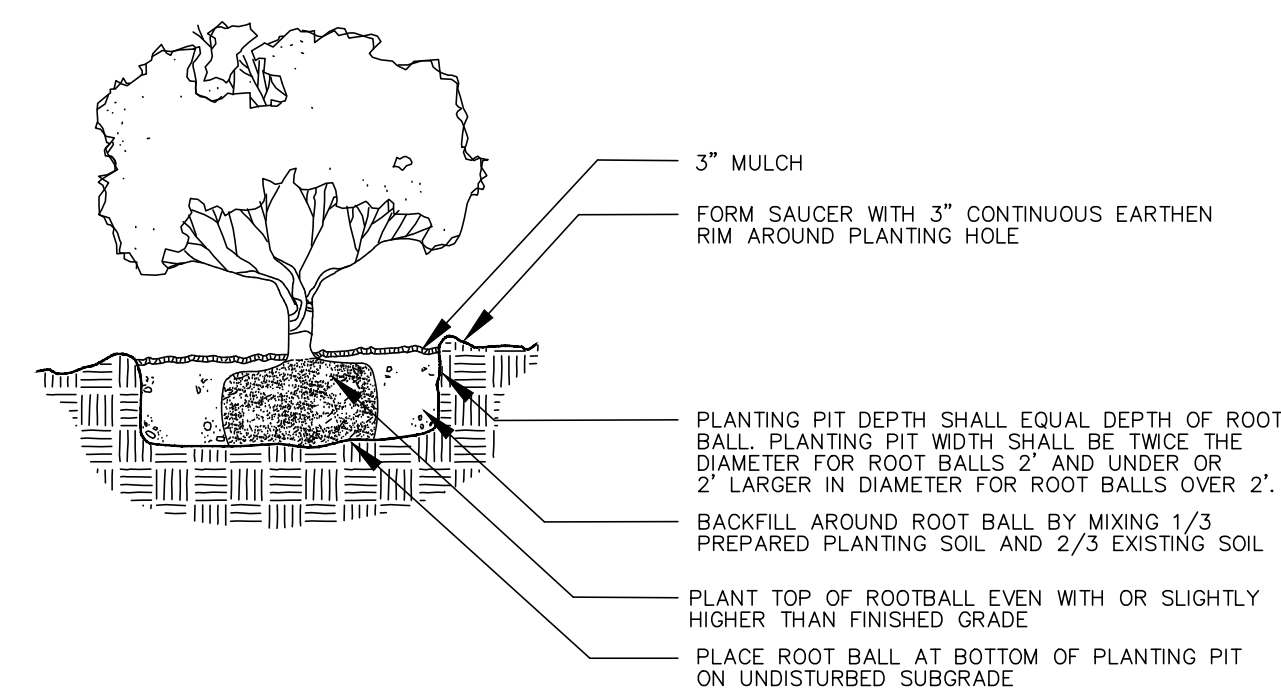
Project Number P21-279
PSLUSD Project Number 5382





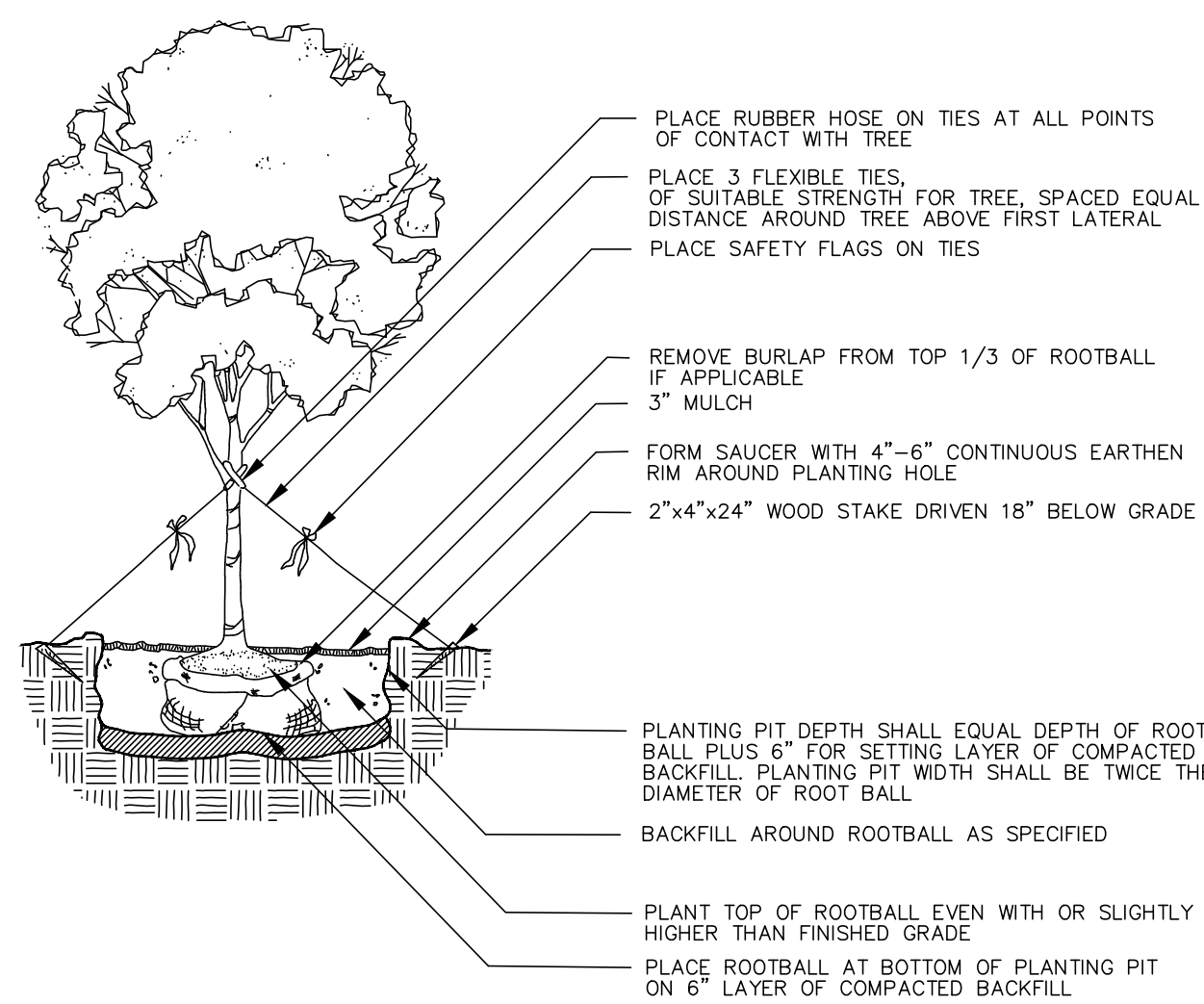
PALM PLANTING DETAIL

N.T.S.
* PALMS WITH MARRED OR BURNED TRUNKS WILL NOT BE ACCEPTED



SHRUB/GROUNDCOVER PLANTING DETAIL

N.T.S.



TREE PLANTING DETAIL

N.T.S.

SHRUB AREAS	QTY	COMMON / BOTANICAL NAME	SIZE	SPACING
CR	900	Red Tip Cocoplum / <i>Chrysobalanus icaco</i> 'Red Tip'	3 gal., 24" Ht. min., Full	30" o.c.
CS2	1,070	Small Leaf Clusia / <i>Clusia guttifera</i>	3 gal., 24" Ht. min., Full	36" o.c.
HC	774	Dwarf Firebush / <i>Hamelia patens</i> 'Compacta'	3 gal., 24" Ht. min., Full	24" o.c.
VO	301	Sweet Viburnum / <i>Viburnum odoratissimum</i>	3 gal., 24" Ht. min., Full	48" o.c.

TREE SCHEDULE					
ADDITIONAL TREES	CODE	QTY	COMMON / BOTANICAL NAME	SIZE	NATIVE
	LM2	8	Crape Myrtle / <i>Lagerstroemia indica</i> 'Muskogee'	10' - 12' Ht. min. x 5' - 6' Spr., Multi-trunk	No
CODE TREES - BUILDING PERIMETER	CODE	QTY	COMMON / BOTANICAL NAME	SIZE	NATIVE
	CS	7	Silver Buttonwood / <i>Conocarpus erectus sericeus</i>	10' - 12' Ht. min. x 4' - 5' Spr., Std., 4' - 5' CT.	Yes
	LM	1	Crape Myrtle / <i>Lagerstroemia indica</i> 'Muskogee'	10' - 12' Ht. min. x 5' - 6' Spr., Multi-trunk	No
	MG	11	Southern Magnolia / <i>Magnolia grandiflora</i> 'D.D. Blanchard'	14' Ht. Min. x 4' - 6' Spr., STD., 5' - 6' CT	Yes
	QV	10	Southern Live Oak / <i>Quercus virginiana</i>	14' Ht. Min. x 4' - 6' Spr., STD., 5' - 6' CT	Yes
	SS2	11	Cabbage Palmetto / <i>Sabal palmetto</i> Tree Ratio (1 : 1) (Building Perimeter)	4 @ 13' CT., 3 @ 16' CT., Slick	Yes
	VA2	2	Montgomery Palm / <i>Veitchia arecina</i> Tree Ratio (1 : 1) (Building Perimeter)	10' - 12' CT., Triple Specimen	No
	WR	23	Mexican Fan Palm / <i>Washingtonia robusta</i> Tree Ratio (1 : 1) (Building Perimeter)	14 @ 18' CT., 14 @ 20' CT., Single Specimen	No
CODE TREES - PERIMETER BUFFER & PARKING LOT	CODE	QTY	COMMON / BOTANICAL NAME	SIZE	NATIVE
	BS	4	Silver Bismark Palm / <i>Bismarckia nobilis</i> 'Silver' Tree Ratio (2 : 1) * Required buffer trees placed elsewhere on site	7' - 8' CT., Root Pruned, Full Head	No
	BA	12	Verawood / <i>Bulnesia arborea</i>	14' Ht. min. x 5' - 7' Spr., Std., 5' - 6' CT.	No
	CE	46	Green Buttonwood / <i>Conocarpus erectus</i>	14' Ht. min. x 5' - 7' Spr., Std., 5' - 6' CT.	Yes
	CE2	3	Green Buttonwood / <i>Conocarpus erectus</i> * Required buffer trees placed elsewhere on site	14' Ht. min. x 5' - 7' Spr., Std., 5' - 6' CT.	Yes
	DR	3	Royal Poinciana / <i>Delonix regia</i>	14' Ht. min. x 5' - 7' Spr., Std., 5' - 6' CT.	No
	DR2	13	Royal Poinciana / <i>Delonix regia</i> * Required buffer trees placed elsewhere on site	14' Ht. min. x 5' - 7' Spr., Std., 5' - 6' CT.	No
	PE	24	Slash Pine / <i>Pinus elliotti</i>	14' Ht. min. x 6' - 7' Spr., Std., 4' - 6' CT.	Yes
	QV2	55	Southern Live Oak / <i>Quercus virginiana</i>	14' Ht. min. x 5' - 7' Spr., Std., 5' - 6' CT.	Yes
	QV3	5	Southern Live Oak / <i>Quercus virginiana</i> * Required buffer trees placed elsewhere on site	14' Ht. min. x 5' - 7' Spr., Std., 5' - 6' CT.	Yes
	RR	1	Royal Palm / <i>Roystonea regia</i> Tree Ratio (2 : 1) * Required buffer trees placed elsewhere on site	10' - 12' GW., Heavy Trunk, Full Head	Yes
	SS3	40	Cabbage Palmetto / <i>Sabal palmetto</i> Tree Ratio (2 : 1)	13 @ 13' CT., 13 @ 16' CT., 13 @ 19' CT., Slick	Yes
	TH2	5	Pink Tabebuia / <i>Tabebuia heterophylla</i> * Required buffer trees placed elsewhere on site	14' Ht. min. x 5' - 7' Spr., Std., 5' - 6' CT.	No
	TH	10	Pink Tabebuia / <i>Tabebuia heterophylla</i>	14' Ht. min. x 5' - 7' Spr., Std., 5' - 6' CT.	No
	VA3	3	Montgomery Palm / <i>Veitchia arecina</i> Tree Ratio (2 : 1)	10' - 12' CT., Triple Specimen	No
	WR2	12	Mexican Fan Palm / <i>Washingtonia robusta</i> Tree Ratio (2 : 1) * Required buffer trees placed elsewhere on site	15' - 16' CT, Single Specimen	No



50 E. Ocean Blvd., Suite 101
Stuart, Florida 34994

T 772.678.7200
F 772.678.7201

www.hjadesignstudio.com
LA 0000905

Florida

Cheney Brother's
City of Port Saint Lucie
MPUD - Landscape Specifications

Copyright
The following drawings are instruments of service to the Landscape Architect. They are not products of design. All ideas, designs, arrangements, and plans indicated or represented by this drawing are owned by and the property of the designer, and were created, evolved, and developed for use on and in connection with the specified project. None of such ideas, designs, arrangements, or plans shall be used by or disclosed to any person, firm, or corporation for any purpose whatsoever without the written permission of the designer.

Job No. 2020-03
Drawn By EB
Checked By MH
Approved By MH
Submittal Dates 12/20/21

Revision Dates 1/07/22

LP-8

Project Number P21-279
PSLUSD Project Number 5382