

PAVING, GRADING, AND DRAINAGE PLANS

FOR

VERANO P.U.D. NO. 1, PLAT NO. 22

DEVELOPER: VERANO DEVELOPMENT, LLC
 10911 S.W. VISCONTI WAY
 PORT ST. LUCIE, FL 34986
 PHONE: 772-467-1299
 FAX: 772-467-1858

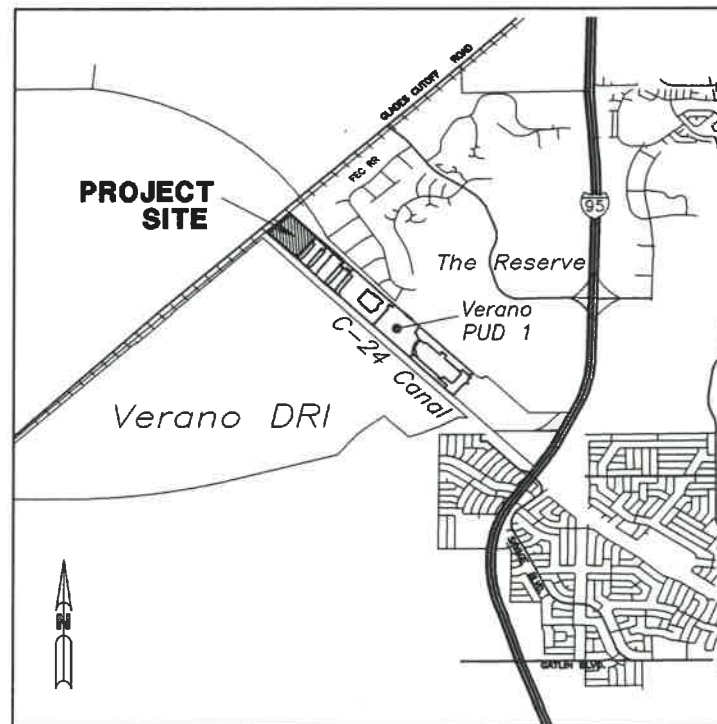
INDEX OF SHEETS

SHEET No.	DESCRIPTION
1	COVER SHEET
2-5	PAVING, GRADING, AND DRAINAGE PLANS
6-8	PAVING, GRADING, AND DRAINAGE DETAILS
SWPP01	STORMWATER POLLUTION PREVENTION PLAN
SWPP02	STORMWATER POLLUTION PREVENTION DETAILS

REVISIONS:

DESCRIPTION	FOUND (YES/NO)	AGENCY CONTACT INFORMATION	MANAGEMENT PLAN (YES/NO)	RELOCATION PLAN (YES/NO)
WETLANDS				
RARE HABITAT				
THREATENED SPECIES				
ENDANGERED SPECIES				
SPECIES OF SPECIAL CONCERN				
INVASIVE / EXOTIC VEGETATION				

ENVIRONMENTAL ASSESSEMENT HAS BEEN ADDRESSED UNDER THE OVERALL DRI THEREFORE NO ADDITIONAL ENVIRONMENTAL REPORT IS REQUIRED



LOCATION MAP

N.T.S.

SECS. 28 & 29 TWP 36 S RGE 39 E

PREPARED BY:



1500 Gateway Boulevard, Suite 200 Boynton Beach, Florida 33426
 Tel: (561) 697-7000 Fax: (561) 369-4731 www.arcadis.com
 EB 7917 / LB 7062

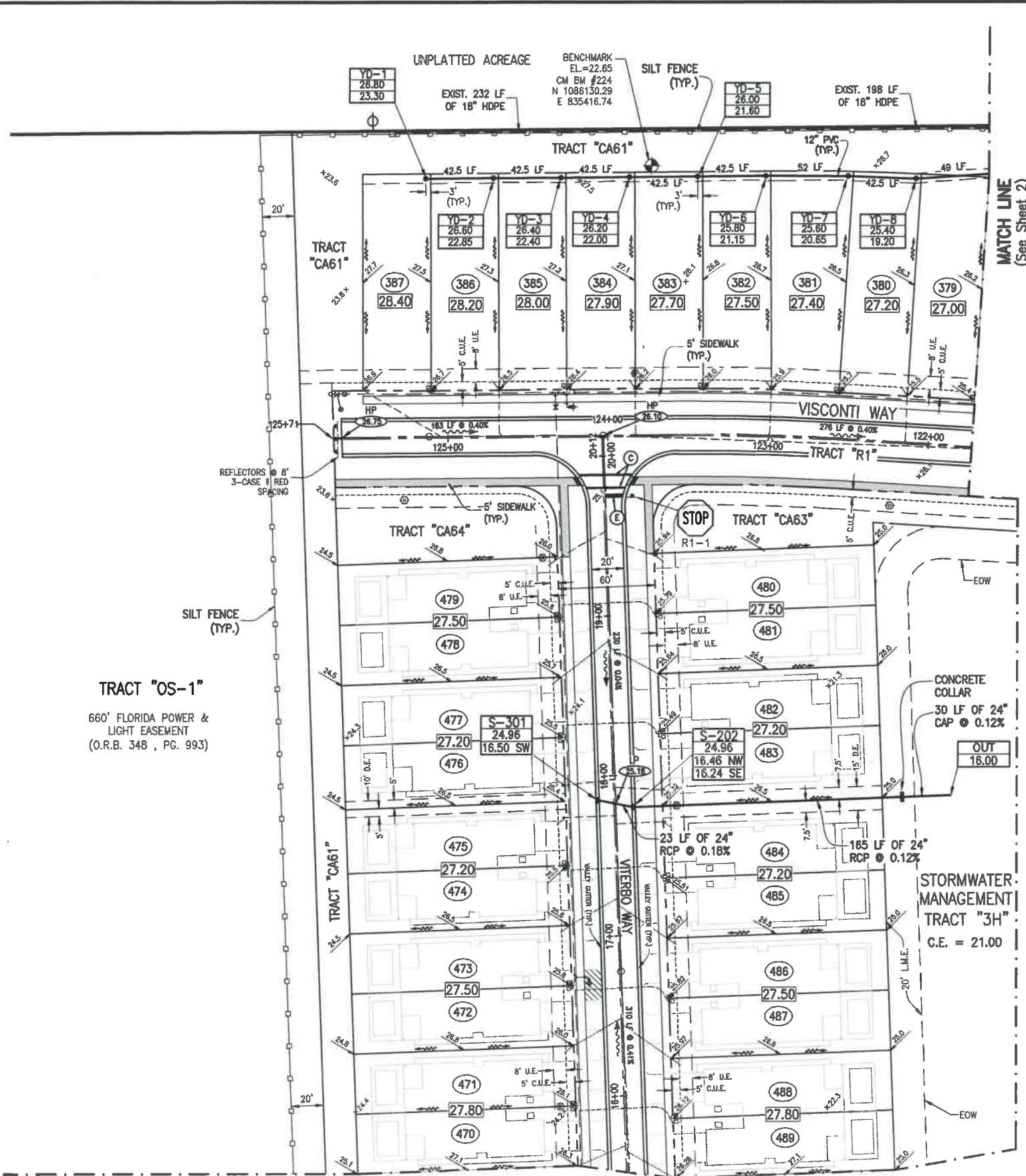
NOTE: ALL ELEVATIONS SHOWN ON PLANS ARE BASED ON NAVD (1988) DATUM

SHEET TITLE	
COVER SHEET	
ROBERT W. LAWSON	
LICENSE	
SEAL	No. 26640
APR 13 2020	
STATE OF FLORIDA	
PROFESSIONAL ENGINEER	
DATE	SCALE
AUGUST 2019	N.T.S.
PROJECT MANAGER	DEPARTMENT MANAGER
RWL	RWL
LEAD DESIGN PROF.	CHECKED BY
RWL	RWL
TASK/PHASE NUMBER	DRAWN BY
0000.0000P	JAF
PROJECT NUMBER	DRAWING NUMBER
WF883022	PD1 OF 8

CITY OF PORT ST. LUCIE PROJECT NUMBER - P19-129

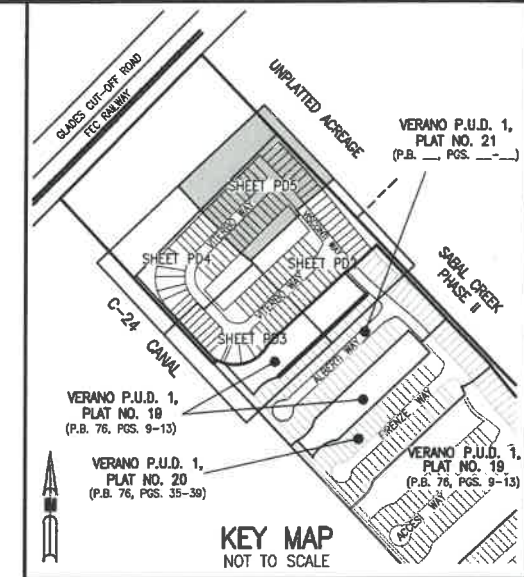
Acad Version : R19.1s (LMS Tech) User Name : jfitzgerald
 Date/Time : Wed, 19 Feb 2020 - 9:40am Path Name : C:\Users\jfitzgerald\AppData\Local\Temp\AcPublish_11112\WF883022-P00 PLANS.dwg
 Layout Tab: PD1

Date/Time : Wed, 19 Feb 2020 - 9:44am
 Path/Name : C:\Users\jfrizgeroad\AppData\Local\Temp\jfrizgeroad\11112\WF883022-PD5 PLANS.dwg
 Layout: Tab: PD5
 Acad Version : R19.1.1 (US Tech)
 User Name : jfrizgeroad



- NOTES:**
1. MINIMUM ROAD CROWN ELEVATION 25.00 N.A.V.D.
 2. MINIMUM FINISHED FLOOR ELEVATION 26.50 N.A.V.D.
 3. CONTROL WATER ELEVATION = 21.00 N.A.V.D.
 4. ALL CATCH BASINS LOCATED ALONG THE 2' VALLEY GUTTER CURB SHALL HAVE A USF 5113 INLET FRAME AND 6194 GRATES.
 5. ALL MANHOLE TYPE DRAINAGE STRUCTURES ("TURNING STRUCTURES ONLY") SHALL HAVE A USF 170 RING AND COVER TYPE F. MANHOLE COVER LETTERING TO READ "STORM SEWER" OR EQUIVALENT.
 6. FRAMES SHALL BE SET TO GRADE UTILIZING 4 COURSES OF BRICK (MAX).

* NOTE: PIPE LENGTHS BASED ON 4:1 LAKE SLOPE TOP TO BOTTOM



LEGEND

- EXISTING STORM SEWER WITH CATCH BASIN
- STORM SEWER LINE WITH JUNCTION BOX
- STORM SEWER LINE WITH CATCH BASIN AND NUMBER
- SANITARY SEWER LINE WITH MANHOLE
- WATER MAIN
- PROPOSED ELEVATION
- PROPOSED LOT ELEVATIONS
- EXISTING ELEVATION
- DIRECTION OF FLOW
- DENOTES PORTION OF PAVEMENT AND SIDEWALK TO BE CONSTRUCTED WITH THESE IMPROVEMENTS
- LOT NUMBER
- FINISHED FLOOR ELEVATION
- EDGE OF WATER
- ACCESS EASEMENT
- LANDSCAPE EASEMENT
- LAKE MAINTENANCE ACCESS EASEMENT
- DRAINAGE EASEMENT
- UTILITY EASEMENT
- IRRIGATION EASEMENT
- CITY UTILITY EASEMENT
- CONTROL ELEVATION
- STORM DRAINAGE
- TYPICAL ELEVATION
- HIGH POINT
- CORRUGATED ALUMINUM PIPE
- REINFORCED CONCRETE PIPE
- EXISTING
- RIGHT-OF-WAY
- RADIUS
- STREET LIGHTS
- 12" WHITE STRIPE
- 24 WHITE STOP BAR
- EXISTING CATCH BASIN

© 2019 ARCADIS U.S., Inc.
 02-18-20 REVISE LOT NUMBERS

REV.	ISSUED DATE	DESCRIPTION

VERANO P.U.D. NO. 1, PLAT NO. 22

SCALE IN FEET

PROJECT TITLE

VERANO P.U.D. NO. 1, PLAT NO. 22

SHEET TITLE

PAVING, GRADING AND DRAINAGE PLANS

ARCADIS U.S., Inc.
 1500 Gateway Boulevard, Suite 200
 Boynton Beach, Florida 33426
 Tel: (561) 967-7000 Fax: (561) 394-4231
 www.arcadis-us.com

PROFESSIONAL ENGINEER
 No. 26648
 APR 13 2020
 STATE OF FLORIDA

DATE AUGUST 2019	SCALE 1" = 40'
PROJECT MANAGER RWL	DEPARTMENT MANAGER RWL
LEAD DESIGN PROF. RWL	CHECKED BY RWL
TASK/PHASE NUMBER 0000.0000P	DRAWN BY JAF
PROJECT NUMBER WF883022	DRAWING NUMBER PD5 OF 8

GENERAL NOTES:

1. ALL CHANGES SHALL BE APPROVED IN WRITING BY ARCADIS U.S., INC.
2. ALL WORK SHALL BE DONE IN A WORKMANLIKE MANNER AND SHALL CONFORM TO ALL APPLICABLE CITY, COUNTY, STATE OR FEDERAL REGULATIONS AND/OR CODES. THE CONTRACTOR SHALL BE RESPONSIBLE FOR OBTAINING ALL PERMITS AND LICENSES REQUIRED PRIOR TO INITIATING THE WORK.
3. SEQUENCE OF CONSTRUCTION - THE SEQUENCE OF CONSTRUCTION SHALL BE SUCH THAT ALL UNDERGROUND INSTALLATIONS OF EVERY KIND THAT ARE BENEATH THE PAVEMENT, SHALL BE IN PLACE AND HAVE PROPER DENSITY PRIOR TO THE CONSTRUCTION AND COMPACTION OF THE SUBGRADE.
4. THE CONTRACTOR SHALL CALL SUNSHINE 1-800-432-4770 48 HOURS BEFORE DIGGING FOR FIELD LOCATIONS OF UNDERGROUND UTILITIES.
5. AS-BUILTS - THE CONTRACTOR SHALL COMPLETE "AS-BUILT" INFORMATION RELATIVE TO LOCATION OF THE INLETS AND MANHOLES, THEIR INVERTS AND RIM ELEVATIONS, AND THE LOCATIONS OF UTILITIES AND UTILITY SERVICES.
6. GUARANTEE - ALL MATERIAL AND EQUIPMENT TO BE FURNISHED AND/OR INSTALLED BY THE CONTRACTOR UNDER THIS CONTRACT SHALL BE GUARANTEED FOR A PERIOD OF ONE YEAR FROM THE DATE OF FINAL ACCEPTANCE THEREOF, AGAINST DEFECTIVE MATERIALS, DESIGN AND WORKMANSHIP. UPON RECEIPT OF NOTICE FROM THE OWNER OF FAILURE OF ANY PART OF THE GUARANTEED EQUIPMENT OR MATERIALS, DURING THE GUARANTEE PERIOD, THE AFFECTED PART, PARTS OR MATERIALS SHALL BE REPAIRED OR REPLACED BY THE CONTRACTOR AT NO EXPENSE TO THE OWNER. IN THE EVENT THE CONTRACTOR FAILS TO MAKE THE NECESSARY REPLACEMENT OR REPAIRS WITHIN SEVEN DAYS AFTER NOTIFICATION BY THE OWNER, THE OWNER MAY ACCOMPLISH THE WORK AT THE EXPENSE OF THE CONTRACTOR.
7. ELEVATIONS - ALL ELEVATIONS REFER TO NAVD 1988 DATUM.
8. BENCHMARKS SHOWN ON PAVING, GRADING AND DRAINAGE PLAN SHEETS.
9. GRADES SHOWN ARE FINISHED GRADES.
10. GRATE ELEVATIONS REFER TO THE EDGE OF PAVEMENT SIDE OF THE GRATE (SEE DETAIL).
11. MINIMUM ROAD CROWN ELEVATION IS ELEVATION 24.00 NAVD.
12. THE MINIMUM FINISH FLOOR ELEVATION, FOR ANY RESIDENTIAL STRUCTURE IS ELEVATION 25.50 NAVD (WHICH IS ABOVE THE PROJECTED FLOOD STAGE PRODUCED BY THE ONE IN ONE HUNDRED YEAR FREQUENCY STORM) OR 18 INCHES ABOVE THE CROWN OF ROAD WHICHEVER IS HIGHER.
13. CLEARING AND GRUBBING - WITHIN THE LIMITS OF CONSTRUCTION, ALL VEGETATION AND ROOT MATERIAL SHALL BE REMOVED.
14. GUMBO - WHERE GUMBO OR OTHER PLASTIC CLAYS ARE ENCOUNTERED, THEY SHALL BE REMOVED WITHIN THE ROADWAY AND PARKING AREAS ONE FOOT BELOW THE SUBGRADE EXTENDING HORIZONTALLY TO THE OUTSIDE EDGE OF THE SHOULDER AREA.
15. HARDPAN - IF HARDPAN IS ENCOUNTERED IN THE SWALE AREA, IT WILL BE REMOVED TO A WIDTH OF TWO FEET AT THE SWALE INVERT AND REPLACED WITH GRANULAR MATERIAL.
16. MUCK AND PEAT - IF MUCK AND/OR PEAT ARE ENCOUNTERED IN THE ROAD OR PARKING AREA, THEY WILL BE REMOVED COMPLETELY TO A WIDTH OF TEN FEET BEYOND THE EDGE OF PAVEMENT AND SHALL BE BACKFILLED WITH GRANULAR MATERIAL.
17. WHERE SOD IS DESIRED, LOWER THE GROUND 2 INCHES BELOW THE FINISHED GRADE TO ALLOW FOR THE THICKNESS OF THE SOD. 18. BACKFILL - REQUIREMENTS FOR PIPE AND DITCH BACKFILL CROSSING ROADS, PARKING AREAS, OR STRUCTURES SHALL BE DEFINED IN THE FLORIDA D.O.T. SPECIFICATIONS, LATEST EDITION. PIPELINE BACKFILL SHALL BE PLACED IN SIX INCH LIFTS AND COMPACTED TO 100% OF THE STANDARD PROCTOR (A.A.S.H.T.O.) T-99 SPECIFICATIONS.
19. UTILITIES - IT IS THE CONTRACTOR'S RESPONSIBILITY TO ASCERTAIN THE EXACT LOCATIONS OF ALL EXISTING UNDERGROUND UTILITIES, WHETHER SHOWN OR NOT, PRIOR TO CONSTRUCTION. CONTRACTOR SHALL NOTIFY ALL UTILITY COMPANIES PRIOR TO CONSTRUCTION. NOTIFY ENGINEER PRIOR TO CONSTRUCTION OF ANY DEVIATION FROM WHAT IS SHOWN ON THE PLAN.
20. CONTRACTOR SHALL SUBMIT SHOP DRAWINGS FOR, BUT NOT LIMITED TO, ALL PIPE, DRAINAGE STRUCTURES, GRATES, FRAMES AND COVERS.
21. STORM SEWER PIPE SHALL BE PAID BASED ON MEASUREMENT FROM CENTER OF STRUCTURE TO CENTER OF STRUCTURE.
22. WHERE CONNECTIONS TO AN EXISTING DRAINAGE SYSTEM ARE PROPOSED, SAID EXISTING DRAINAGE STRUCTURES AND LINES SHALL BE CLEANED OF ALL SILT AND OTHER DEBRIS PRIOR TO SAID CONNECTIONS BEING MADE, AND WHERE THE EXISTING DRAINAGE SYSTEM INCLUDES DITCHES, SAID DITCHES SHALL BE CLEARED AND REWORKED, AS NECESSARY, TO RESTORE THEM TO AN APPROVED DESIGN SECTION. SYSTEMS ARE TO BE CLEANED AND/OR GRADED TO THE POINT OF LEGAL POSITIVE OUTFALL.
23. ALL PIPE LENGTHS AND CENTERLINE SLOPE LENGTHS SHOWN ON THESE DRAWINGS ARE SCALED DISTANCES. THE CONTRACTOR SHALL CONFIRM ALL MEASUREMENTS IN THE FIELD AND NOTIFY THE ENGINEER IN WRITING OF ANY DISCREPANCY WITH THE DRAWINGS PRIOR TO PERFORMING THE WORK.
24. INLETS AND MANHOLES - ALL INLETS AND MANHOLES SHALL BE CONSTRUCTED IN ACCORDANCE WITH FLORIDA D.O.T. STANDARDS SPECIFICATIONS, LATEST EDITION AND ROADWAY AND TRAFFIC DESIGN STANDARDS, LATEST EDITION, AND THE CITY OF PORT ST. LUCIE STANDARDS, LATEST EDITION.
25. CORRUGATED ALUMINUM PIPE - THE PIPE SHALL CONFORM WITH THE REQUIREMENTS OF THE A.A.S.H.T.O., M-196, AND WITH THE FLORIDA D.O.T. SPECIFICATIONS, LATEST EDITION. ALUMINUM PIPE TO BE HELICAL (SPIRAL FLOW).
26. INSTALLATION OF CORRUGATED METAL PIPE - ALL JOINTS ON STORM SEWER PIPE SHALL BE MADE UP WITH ONE-HALF INCH NEOPRENE. ALL BANDS SHALL HAVE THE SAME CORRUGATION DESIGN AS THE PIPE. THE WIDTH OF THE BANDS SHALL BE AS FOLLOWS: 12 INCH WIDE UP TO 48 INCH DIAMETER PIPE AND 24 INCH WIDE OVER 48 INCH DIAMETER PIPE. THE REQUIREMENTS OF D.O.T. DMO6036 WILL BE ADHERED TO WITH ANNUAL BANDING OF JOINTS REQUIRED. ALL PIPE JOINTS SHALL BE WRAPPED WITH FILTER FABRIC PER F.D.O.T. SPECIFICATIONS.
27. REINFORCED CONCRETE PIPE - THE PIPE SHALL CONFORM WITH THE REQUIREMENTS OF CLASS III OF A.S.T.M. C-76 AND WITH THE FLORIDA D.O.T. SPECIFICATIONS, LATEST EDITION. ALL PIPE JOINTS SHALL BE WRAPPED WITH FILTER FABRIC PER F.D.O.T. SPECIFICATIONS.
28. ALL PAVING AND DRAINAGE WORK SHALL BE CONSTRUCTED IN FULL ACCORDANCE WITH THE CITY OF PORT ST. LUCIE'S LATEST STANDARDS.
29. ANY EXISTING ROADWAY AND/OR UTILITY THAT IS DAMAGED BY THE CONTRACTOR SHALL BE CORRECTED AT THE CONTRACTOR'S EXPENSE TO THE SATISFACTION OF THE ENGINEER.

30. SUBGRADE - SHALL BE COMPACTED AS NOTED ON THE PLANS AND MEET THE DENSITY REQUIREMENTS AS DETERMINED BY THE A.A.S.H.T.O. T-180 SPECIFICATIONS. SUBGRADE SHALL EXTEND 12 INCHES BEYOND THE PROPOSED EDGE OF PAVEMENT AND/OR 6" BEYOND VALLEY CUTTER, TYPE "A" AND "T" CURB & GUTTER OR TYPE "D" CURB. SUBGRADE SHALL BE 12 INCHES THICK COMPACTED TO 98% ACCORDING TO A.A.S.H.T.O. T-180. ALL MUCK, STUMPS, ROOTS OR OTHER DELETERIOUS MATTER ENCOUNTERED IN THE PREPARATIONS OF THE SUBGRADE SHALL BE REMOVED COMPLETELY FROM THE CENTERLINE OF THE ROADWAY TO A WIDTH OF TEN FEET BEYOND THE EDGE OF PAVEMENT. IF SUBGRADE IS REQUIRED TO BE STABILIZED, THE REQUIRED BEARING VALUE DETERMINATIONS SHALL BE MADE BY THE LIMESTONE BEARING RATIO, TEST METHOD "D" OF A.A.S.H.T.O. T-180 SPECIFICATIONS.
31. BASE - APPROVED LOCAL BASE MATERIAL, MEETING LBR 100 MIN., SHALL BE COMPACTED TO NOT LESS THAN 98% MAXIMUM DENSITY AS DETERMINED BY A.A.S.H.T.O. T-180 SPECIFICATIONS AND AS CALLED FOR IN FLORIDA D.O.T. SPECIFICATIONS, LATEST EDITION. BASE COURSES OVER 6 1/2" THICK SHALL BE PLACED AND COMPACTED IN TWO EQUAL LIFTS.
32. PRIME COAT - BITUMINOUS PRIME COAT SHALL CONFORM WITH THE REQUIREMENTS OF THE FLORIDA D.O.T. SPECIFICATIONS, LATEST EDITION AND SHALL BE APPLIED AT THE RATE OF 0.25 GALLONS PER SQUARE YARD, UNLESS A LOWER RATE IS DIRECTED BY THE ENGINEER.
33. TACK COAT - BITUMINOUS TACK COAT SHALL CONFORM WITH THE REQUIREMENTS OF THE FLORIDA D.O.T. SPECIFICATIONS, LATEST EDITION AND SHALL BE APPLIED AT THE RATE OF 0.08 GALLONS PER SQUARE YARD, UNLESS A VARIATION IS APPROVED BY THE ENGINEER.
34. SURFACE COURSE - ASPHALTIC CONCRETE SURFACE COURSE SHALL CONFORM WITH THE REQUIREMENTS OF THE FLORIDA D.O.T. SPECIFICATIONS, LATEST EDITION. THE MINIMUM COMPACTED THICKNESS TO BE AS NOTED ON PLANS.
35. PAVEMENT MARKINGS - SHALL BE IN ACCORDANCE WITH THE MANUAL OF UNIFORM TRAFFIC CONTROL DEVICES FOR STREETS AND HIGHWAYS AND CITY OF PORT ST. LUCIE'S LATEST STANDARDS.
36. CONCRETE - ALL CONCRETE SHALL DEVELOP 4000 P.S.I. (MINIMUM) 28 DAY COMPRESSIVE STRENGTH OR GREATER WHERE NOTED ON PLANS. CLASS I CONCRETE SHALL CONFORM WITH THE FLORIDA D.O.T. SPECIFICATIONS, LATEST EDITION. CLASS I CONCRETE USED AS PAVING SHALL DEVELOP 3000 P.S.I. (MINIMUM) 28 DAYS COMPRESSIVE STRENGTH.
37. NO DRIVEWAY SHALL BE CONSTRUCTED WITHIN ANY PORTION OF THE SAFE SIGHT CORNERS.
38. NO DRIVEWAY SHALL BE CONSTRUCTED WITHIN 5' OF A FIRE HYDRANT.
39. CONTRACTOR TO OBTAIN ALL REQUIRED DEWATERING PERMITS FROM SOUTH FLORIDA WATER MANAGEMENT DISTRICT.
40. 4" SLEEVES SHALL BE SCHEDULE 80 AND BE PLACED AT 0.00% SLOPE WITH TOP OF PIPE 3.0" BELOW PROFILE GRADE. ENDS OF PIPE SHALL HAVE METAL LOCATORS INSTALLED.
41. ATTENTION IS DIRECTED TO THE FACT THAT THESE PLANS MAY HAVE BEEN CHANGED IN SIZE BY REPRODUCTION. THIS MUST BE CONSIDERED WHEN OBTAINING SCALED DATA.
42. CONTRACTOR SHALL UTILIZE CONSTRUCTION METHODS AND DEVICES SUCH AS TURBIDITY CURTAINS, SILT BARRIERS AND HAY BALES WHERE NECESSARY IN ORDER TO COMPLY WITH ALL FEDERAL, STATE AND LOCAL WATER QUALITY STANDARDS.
43. THE CONTRACTOR SHALL CONFINE CONSTRUCTION ACTIVITIES TO OWNER-SUPPLIED EASEMENTS AND RIGHTS-OF-WAY. IN ENVIRONMENTALLY SENSITIVE AREAS, CONSTRUCTION ACTIVITIES SHALL BE FURTHER CONFINED AS INDICATED OR REQUIRED BY PERMIT CONDITIONS.
44. CONTRACTOR SHALL BE RESPONSIBLE FOR REVIEWING THE SITE PRIOR TO THE BIDDING PROCESS TO DETERMINE EXISTING CONDITIONS, ITEMS DISCOVERED WHICH ARE NOT REFLECTED IN THE DRAWINGS AND AFFECT OR POTENTIALLY AFFECT THE PROPOSED CONSTRUCTION SHALL BE BROUGHT TO THE ATTENTION OF THE ENGINEER PRIOR TO THE SUBMISSION OF BIDS.
45. MAINTENANCE OF TRAFFIC SHALL BE THE RESPONSIBILITY OF THE CONTRACTOR AND SHALL BE IN ACCORDANCE WITH FOOT AND CITY OF PORT ST. LUCIE'S STANDARDS. THE INDIVIDUAL PREPARING M.O.T. PLANS SHALL BE CERTIFIED IN ADVANCE M.O.T. BY THE FLORIDA DEPARTMENT OF TRANSPORTATION.
46. THE CONTRACTOR SHALL REVIEW THE SITE CONDITIONS PRIOR TO THE BID PROCESS TO DETERMINE THE METHODS AND EXTENT DEWATERING IS NECESSARY (IF ANY) AND SHALL INCLUDE METHODS AND COSTS ASSOCIATED WITH DEWATERING IN THE BID.
47. CLEAN UP: THE CONTRACTOR SHALL KEEP THE CONSTRUCTION SITE FREE OF RUBBISH AND WASTE MATERIALS AND RESTORE TO THEIR ORIGINAL CONDITION THOSE PORTIONS OF THE SITE NOT DESIGNATED FOR ALTERATION BY THE CONTRACT DOCUMENTS. CLEAN UP AND RESTORATION SHALL BE ACCOMPLISHED ON A CONTINUING BASIS THROUGHOUT THE CONTRACT PERIOD AND IN SUCH A MANNER AS TO MAINTAIN A MINIMUM OF NUISANCE AND INTERFERENCE TO THE GENERAL PUBLIC AND RESIDENTS IN THE VICINITY OF THE WORK. THE CONTRACTOR SHALL ALSO REMOVE, WHEN NO LONGER NEEDED, ALL TEMPORARY STRUCTURES AND EQUIPMENT USED IN HIS OPERATIONS. IT IS THE INTENT OF THIS SPECIFICATION THAT THE CONSTRUCTION AREA AND THOSE OTHER AREAS NOT DESIGNATED FOR ALTERATION BY THE CONTRACT DOCUMENTS SHALL BE RESTORED TO THEIR ORIGINAL CONDITION AS NEARLY AS POSSIBLE IMMEDIATELY AFTER COMPLETION OF CONSTRUCTION.
48. THE CONTRACTOR SHALL PROVIDE AND MAINTAIN ADEQUATE SIGNS, BARRICADES, FLASHING LIGHTS, FLAGMEN, AND WATCHMEN AND TAKE ALL NECESSARY PRECAUTIONS FOR THE PROTECTION OF THE WORK AND THE SAFETY OF THE PUBLIC. TRAFFIC CONTROL WARNING SIGNS AND BARRICADES SHALL BE IN STRICT ACCORDANCE WITH THE PROVISIONS OF THE FLORIDA DEPARTMENT OF TRANSPORTATION, MANUAL ON TRAFFIC CONTROLS AND SAFE PRACTICES FOR STREET AND HIGHWAY CONSTRUCTION, MAINTENANCE AND UTILITY OPERATION (LATEST REVISION). ALL BARRICADES AND OBSTRUCTIONS SHALL BE PROTECTED AT NIGHT BY FLASHING SIGNAL LIGHTS WHICH SHALL BE KEPT BURNING FROM SUNSET TO SUNRISE. BARRICADES SHALL BE OF SUBSTANTIAL CONSTRUCTION AND SUITABLE FOR NIGHT VISIBILITY. SUITABLE WARNING SIGNS SHALL BE SO PLACED AND ILLUMINATED AT NIGHT AS TO SHOW IN ADVANCE WHERE CONSTRUCTION, BARRICADES OR DETOURS EXIST.



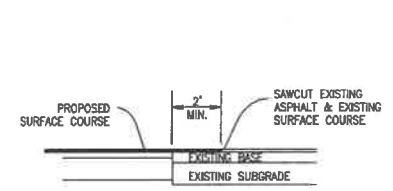
PROJECT TITLE
**VERANO P.U.D. NO. 1,
PLAT NO. 22**

SHEET TITLE
**PAVING, GRADING,
AND DRAINAGE
DETAILS**

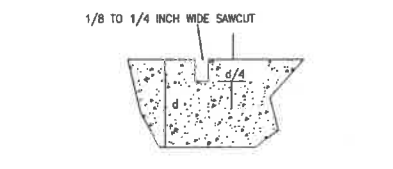
ARCADIS
ARCADIS U.S., INC.
1500 Gateway Boulevard, Suite 200
Boca Raton, Florida 33426
Tel: (561) 897-7000 Fax: (561) 899-4711
www.arcadis.com

Professional Engineer
No. 26648
APR 13 2020
STATE OF FLORIDA
ROBERT W. LAWSON, PE
REG. NO. 26640

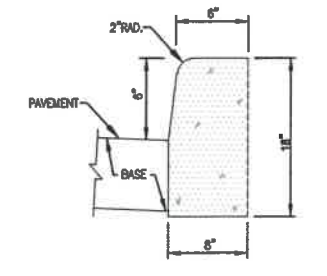
DATE AUGUST 2019	SCALE N.T.S.
PROJECT MANAGER RWL	DEPARTMENT MANAGER RWL
LEAD DESIGN PROF. RWL	CHECKED BY RWL
TASK/PHASE NUMBER 0000.0000P	DRAWN BY JAF
PROJECT NUMBER WF883022	DRAWING NUMBER PD6 OF 8



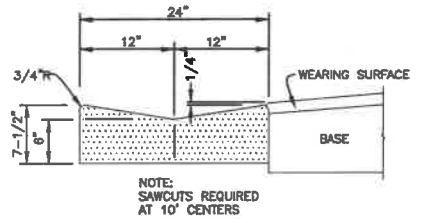
SAW CUT/BUTT JOINT DETAIL
N.T.S.



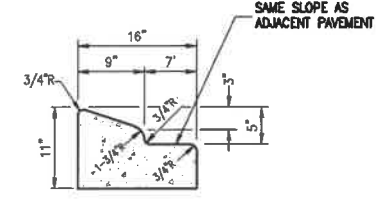
SAW JOINT DETAIL
N.T.S.



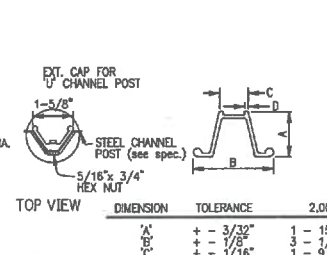
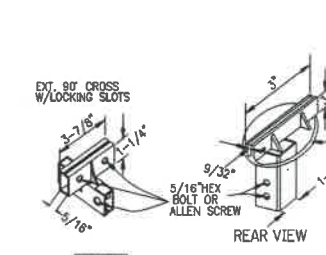
TYPE "D" CURB
N.T.S.



CONCRETE VALLEY GUTTER
N.T.S.



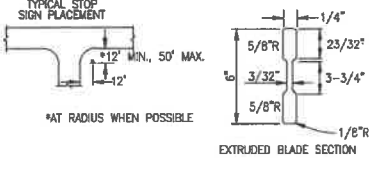
TYPE "A" CURB & GUTTER
N.T.S.



DIMENSION	TOLERANCE	2.00	3.00
A'	+ - 3/32"	1 - 15/32"	1 - 7/8"
B'	+ - 1/8"	1 - 1/16"	1 - 1/2"
C'	+ - 1/16"	3 - 9/32"	1 - 5/16"

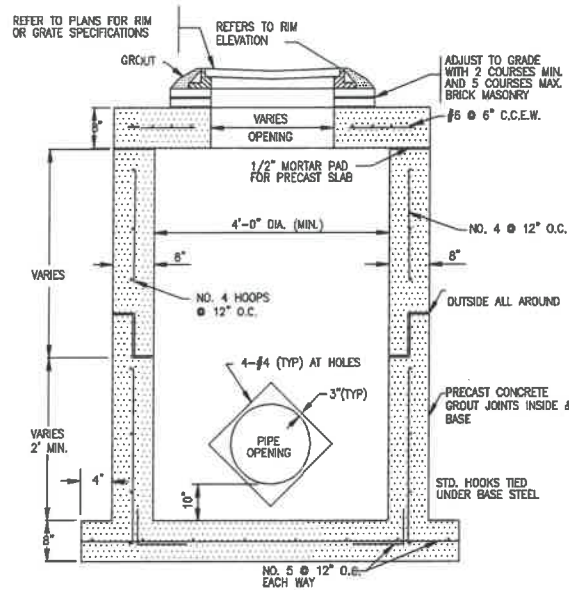
GENERAL SPECIFICATIONS

EXT. BLADE: ALCOA #88054.6083-T6 ALLOY, ETCHED/DEGREASED WITH #1200 ALUMINE FINISH WITH #2277 GREEN SCOTCHLITE BACKGROUND OR EQUAL. DIMENSIONS--6" H, 24", 30" OR 36" L. LETTERS: NAME - 4" SERIES "B" #2270 SCOTCHLITE (SILVER) OR EQUAL - SUFFIX - 2" SERIES AS ABOVE. BRACKETS: SEE DETAILS THIS SHEET. POST: STEEL FLANGED CHANNEL POST WITH BAKED GREEN ALKYD FINISH PER A.S.T.M. - A - 123 WITHOUT ANCHOR PLATES. SEE DETAIL THIS SHEET. CONC. BASE: 2000 PSI AS SHOWN. STOP SIGN: R1 - 1 MUTCD - 30" 30" (HIGH INTENSITY) LOCATION: ONE PER INTERSECTION AS INDICATED ON THE PLANS.



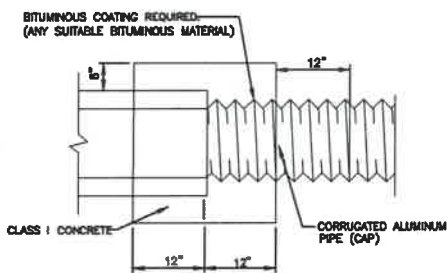
TYP. STREET/STOP SIGN
N.T.S.

Acad Version : R19.1s (US Tech)
 User Name : jaf
 Date/Time : Wed, 10 Feb 2020 - 9:40am
 Current Sheets : B-5-C
 Path Name : G:\Projects\USA\WF883022\PLANS\WF883022_PD_02.dwg
 Layout Tab: PD6

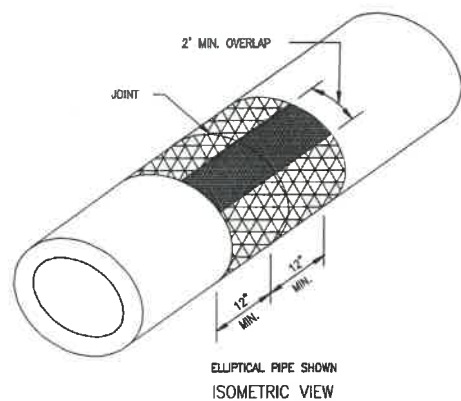


- NOTES:
1. ALL REINFORCING TO MEET CURRENT F.D.O.T. SPECIFICATIONS
 2. VALLEY CURB INLETS SHALL HAVE USF 5113-6194 FRAME AND GRATE

DRAINAGE STRUCTURES
N.T.S.

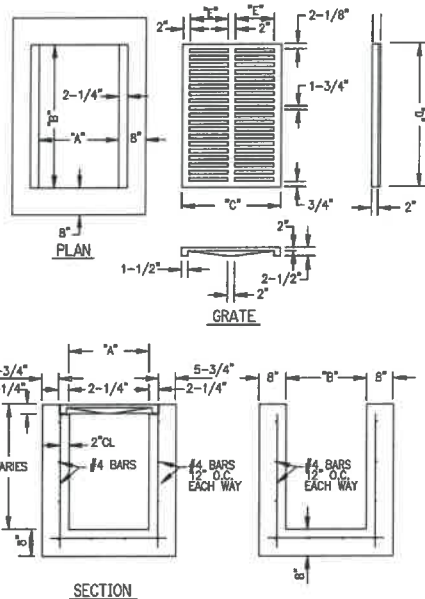
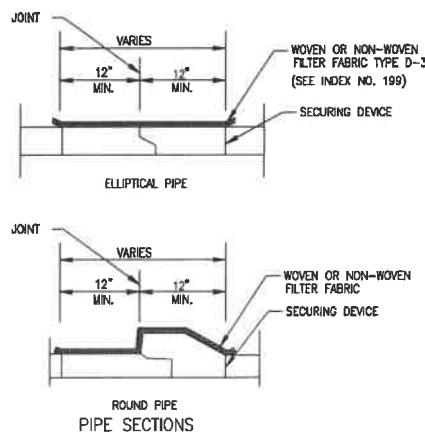


CONCRETE COLLAR DETAIL
N.T.S.



COST OF FILTER FABRIC JACKET TO BE INCLUDED IN COST OF PIPE CULVERTS.
FOR ALL PIPE TYPES - CONCRETE PIPE SHOWN

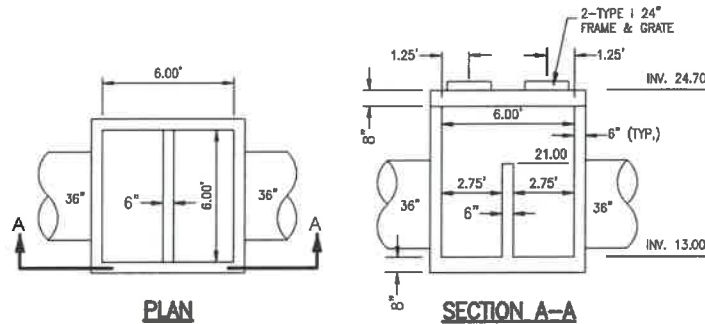
FILTER FABRIC JACKET
N.T.S.



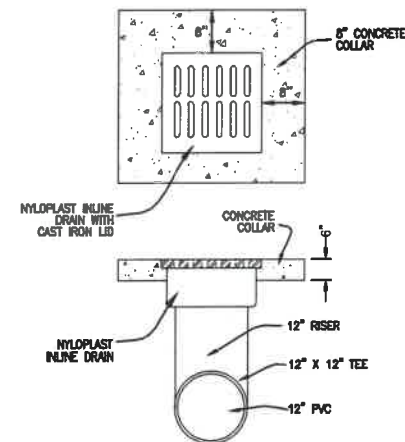
INLET DETAIL
N.T.S.

TYPE INLET	"A"	"B"	"C"	"D"	"E"	MAX. SIZE R.C.P.
"C"	2'-0"	3'-1"	2'-4"	3'-0"	11"	18"
"E"	3'-0"	4'-6"	3'-4"	4'-4"	1'-5"	30"
"E MOD"	3'-0"	4'-6"	3'-4"	4'-4"	1'-5"	48"

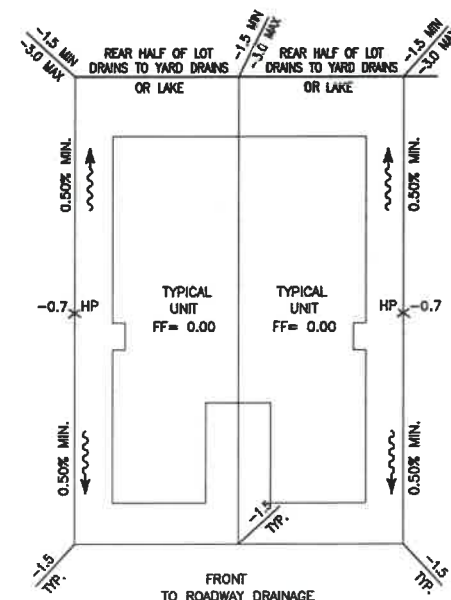
- GENERAL NOTES:
- BEVELED EDGES: ALL EXPOSED CORNERS AND EDGES TO BE CHAMFERED 3/4"
 - FOUNDATION MATERIAL: WHERE MATERIAL UNSATISFACTORY FOR FOUNDATION IS ENCOUNTERED AT FLOW LINE OMIT FLOOR AND CARRY WALLS DOWN TO SATISFACTORY FOUNDATION BACKFILL TO FLOW LINE WITH CLEAN SAND.
 - GRATES: CAST IRON GRATES IN ACCORDANCE WITH FLA. D.O.T. SPECS.
 - * INLET TYPES: INLETS ARE TO BE AS SHOWN HEREON. TYPE "E MOD" IS A TYPE "E" TURNED 90° TO RECEIVE R.C.P. UP TO 48" DIA. INLETS RECEIVING R.C.P. LARGER THAN 48" DIA. SHALL BE IN ACCORDANCE WITH FLA. D.O.T. STANDARDS.
 - MATERIAL: INLET WALLS AND FOOTING MAY EITHER POURED-IN-PLACE 2500 LB. CONC. OR PRECAST CLASS "A" 3000 LB. CONC.
 - ALL INLET CONSTRUCTION IS IN ACCORDANCE WITH THE CURRENT F.D.O.T. STANDARDS INDEX NO. 201 & 232.



CS-1 DETAIL
NOT TO SCALE
SEE FOOT STANDARD INDEX 425-010 FOR DETAILS

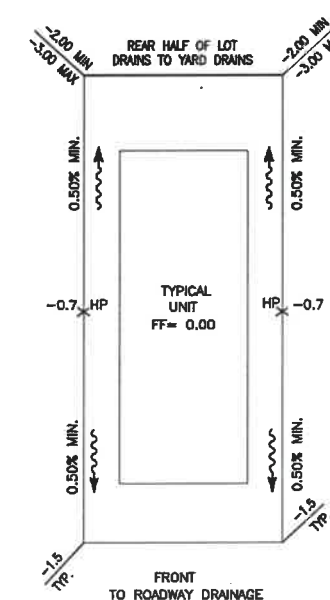


"IN-LINE" YARD DRAIN DETAIL
N.T.S.



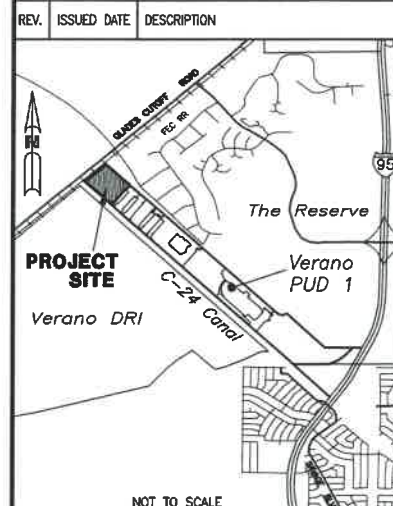
TYPICAL LOT DRAINAGE DETAILS
N.T.S.

NOTES: ALL UNIT TYPES CONSTRUCTED TO USE SIMILAR LOT DRAINAGE SCHEME AS THE TYPICAL UNIT SHOWN



TYPICAL LOT DRAINAGE DETAILS
N.T.S.

NOTES: ALL UNIT TYPES CONSTRUCTED TO USE SIMILAR LOT DRAINAGE SCHEME AS THE TYPICAL UNIT SHOWN



PROJECT TITLE
VERANO P.U.D. NO. 1, PLAT NO. 22

SHEET TITLE
PAVING, GRADING, AND DRAINAGE DETAILS

ARCADIS
1500 Gateway Boulevard, Suite 200
Boynton Beach, Florida, 33426
Tel: (561) 997-7800 Fax: (561) 997-1231
www.arcadis.com

PROFESSIONAL ENGINEER
No. 28640
APR 13 2020
STATE OF FLORIDA
ROBERT LAWSON, P.E.
E.L. No. 7, 28640

DATE AUGUST 2019	SCALE N.T.S.
PROJECT MANAGER RWL	DEPARTMENT MANAGER RWL
LEAD DESIGN PROF. RWL	CHECKED BY RWL
TASK/PHASE NUMBER 0000.000DP	DRAWN BY JAF
PROJECT NUMBER WF883022	DRAWING NUMBER PD8 OF 8

Acad Version : R19.1s (LWS Tech) User Name : jitzgerold
 Date/Time : Wed, 19 Feb 2020 - 9:45am Path Name : C:\Users\jitzgerold\AppData\Local\Temp\MapPublish_11112\WF883022_SWPP01-02.dwg
 Current Plotstyle : ByColor Layout Tab: SWPP01

FLORIDA EAST COAST RAILWAY

UNPLATTED ACREAGE

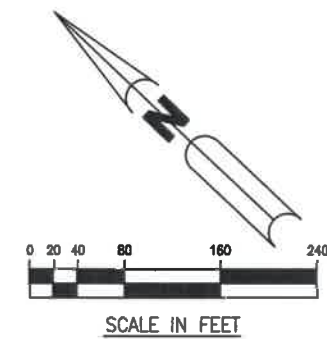
SILT FENCE (TYP.)

EXISTING WALL

SABAL CREEK

© 2019 ARCADIS U.S., Inc.
 02-18-20 REVISE LOT NUMBERS

REV.	ISSUED DATE	DESCRIPTION



TRACT "OS-1"
 660' F.P.L. EASEMENT

SILT FENCE (TYP.)

STORMWATER MANAGEMENT TRACT "3H"
 3.091 AC.
 AREA OF WATER SURFACE=2.291 AC.

BASIN 51
 C.E. = 21.0

BASIN DIVIDE LINE

FLOATING TURBIDITY BARRIER (TYP.)

BASIN 50
 C.E. = 19.7

STORMWATER MANAGEMENT TRACT "3G"
 3.822 AC.
 AREA OF WATER SURFACE=2.801 AC.

S.F.W.M.D. C-24 CANAL

LEGEND:
 SILT FENCE (TYP.)
 FLOATING TURBIDITY BARRIER (TYP.)

PROJECT TITLE
**VERANO P.U.D. NO. 1,
 PLAT NO. 22**

SHEET TITLE
**STORMWATER POLLUTION
 PREVENTION PLAN**

ARCADIS
 ARCADIS U.S., Inc.
 1500 Gateway Boulevard, Suite 200
 Boynton Beach, Florida 33426
 Tel: (561) 607-7000 Fax: (561) 388-4731
 www.arcadis-us.com



DATE AUGUST 2019	SCALE 1" = 180'
PROJECT MANAGER RWL	DEPARTMENT MANAGER RWL
LEAD DESIGN PROF. RWL	CHECKED BY RWL
TASK/PHASE NUMBER 0000.000DP	DRAWN BY JAF
PROJECT NUMBER WF883022	DRAWING NUMBER SWPP01

CITY OF PORT ST. LUCIE PROJECT NUMBER - P19-129

