

FRONT (NORTH) ELEVATION

SCALE: 1/8" = 1'-0"



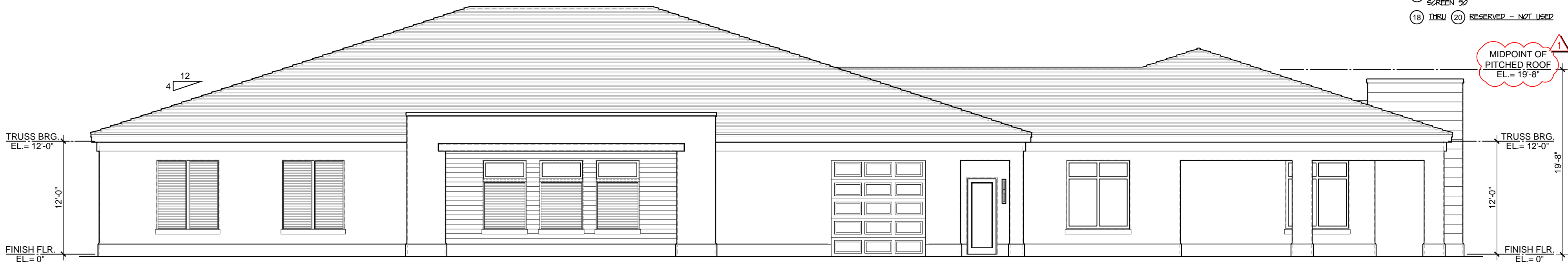
WEST ELEVATION

SCALE: 1/8" = 1'-0"



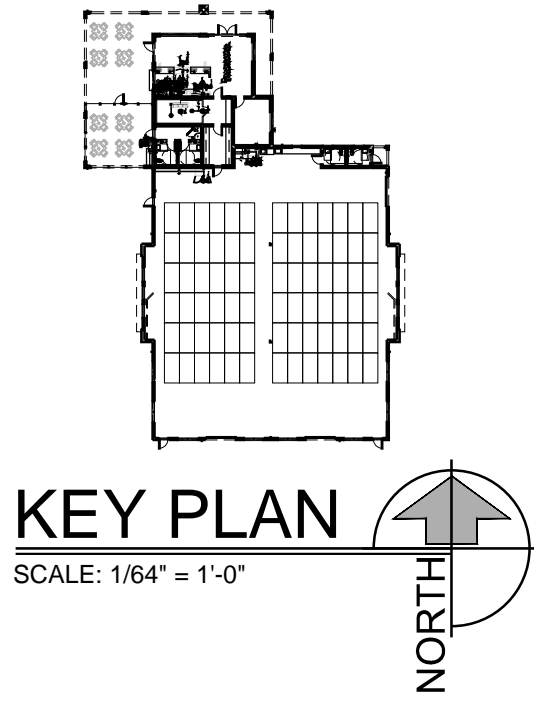
SOUTH ELEVATION

SCALE: 1/8" = 1'-0"



EAST ELEVATION

SCALE: 1/8" = 1'-0"



KEY PLAN

SCALE: 1/64" = 1'-0"

MATERIALS LEGEND

- 1) STUCCO 3/4" THICK OVER CONCRETE OR CONCRETE MASONRY CONSTRUCTION. IN SMOOTH (SAND) FINISH USE "LINK" BANDING AROUND OVER CAST CONCRETE SURFACES LATH 10" WIDE SAND AT ALL MASONRY TO CONCRETE TRANSITIONS
- 2) STUCCO BASE SMOOTH (SAND FINISH) STUCCO IN PROFILE AS SHOWN - SEE WALL SECTIONS
- 3) STUCCO EXTERIOR SMOOTH (SAND) FINISH STUCCO IN PROFILES AS SHOWN - SEE WALL SECTIONS
- 4) STUCCO SILL TERM SMOOTH (SAND) FINISH STUCCO IN PROFILE AS SHOWN - SEE DETAIL 1/A-09
- 5) EXTERIOR DECORATIVE TILE TYPE AND COLOR TO BE SELECTED BY ARCHITECT. INSTALL OVER WATERPROOFING PER MANUFACTURER'S INSTRUCTIONS
- 6) FALSE JOISTERS "JOEK" FALSE LOWER MATERIAL IN PROFILES AS SHOWN ON 1/4" PLYWOOD BACKER ON LIQUID APPLIED WATERPROOF MEMBRANE ON STUCCO - SEE DETAIL 6/A-08
- 7) LOWERED VENT: FIXED DRAINABLE BLADE ALUMINUM VENT, TYPE ESD-400 WITH CONTINUOUS ANGLE MOUNT AS BY GREENGLASS (OR APPROVED EQUAL) - SHOP PRIME / FIELD PAINTED
- 8) WINDOW: SEE SCHEDULE FOR SIZE, TYPE, FRAME AND OTHER PERTINENT INFO. INCLUDING REQUIRED IMPACT PROTECTION OF EXTERIOR OPENINGS (SEE SCHEDULE FOR CONTING AND SLASS PERFORMANCE REQ'S)
- 9) DOOR: SEE SCHEDULE FOR SIZE, TYPE, FRAME AND DETAILS AND OTHER PERTINENT INFO. INCLUDING REQUIRED IMPACT PROTECTION OF EXTERIOR OPENINGS
- 10) CONCRETE ROOF: TILES FLAT CONCRETE ROOF TILES OVER PLASTIC FEEL AND STICK SMOOTH MODIFIED BITUMEN SINGLE PLY UNDERLAMENT OVER PLYWOOD SHEATHING
- 11) FASCIA 1x4 (S4S) CEDAR FASCIA WITH 1/2" MIN LAP OVER 1x6 (S4S) CEDAR FASCIA OVER 2x SUBFASCIA - SEE SECTIONS
- 12) DRIP EDGE FLASHING: METAL SNAP-ON FLASHING AND GLEAT SELECTED BY ARCHITECT
- 13) FLASHING: DRAINMETAL FLASHING - COLOR TO BE SELECTED BY ARCHITECT
- 14) COPING LAP PERMA-SNAP (SNAP-ON) METAL COPING SYSTEM AS MANUFACTURED BY W. P. TECKMAN CO. OR APPROVED EQUAL - COLOR TO BE SELECTED BY ARCHITECT
- 15) DOWNSPOUT NOZZLE: "ZURK" Z-199 (4" PIPE) DOWNSPOUT NOZZLE IN POLISHED BRONZE BODY - SEE DETAIL 11/A-051
- 16) WATERPROOF MEMBRANE AT TOP AND VERTICAL SURFACES (GROES) OR CAST-IN-PLACE CONCRETE OVERLAPERS - TWO LAYERS OF WATERPROOF MEMBRANE - SEE DETAIL A/A-08
- 17) SCREEN ALUMINUM FRAME SCREEN SYSTEM WITH SOLAR SCREEN 50
- 18) DRU (20) RESERVED - NOT USED

PROPOSED STRUCTURE:

CART BARN / PRO SHOP  
AT ASTOR CREEK  
PORT SAINT LUCIE, FLORIDA

EXTERIOR ELEVATIONS

SHEET NO.

A-06

I HEREBY CERTIFY THAT, TO THE BEST OF MY KNOWLEDGE, THE PROPOSED STRUCTURE HAS BEEN DESIGNED IN STRICT ACCORDANCE WITH THE FLORIDA BUILDING CODE, 7TH EDITION, FLORIDA STATE STATUTES, AND THE 2002-01 BUILDING CONSTRUCTION ADMINISTRATIVE CODE ORDINANCE, AND FLORIDA STATUTES.

DAVID M. HUMPHREY  
FLORIDA REG. NO. 9763

HUMPHREY • ROSAL  
ARCHITECTS  
3000 1ST. NORTH  
SUITE 1100  
NAPLES, FLORIDA 34103  
PHONE: (239) 263-4451  
FAX: (239) 263-4451  
dhumphrey@humphreynosal.com

