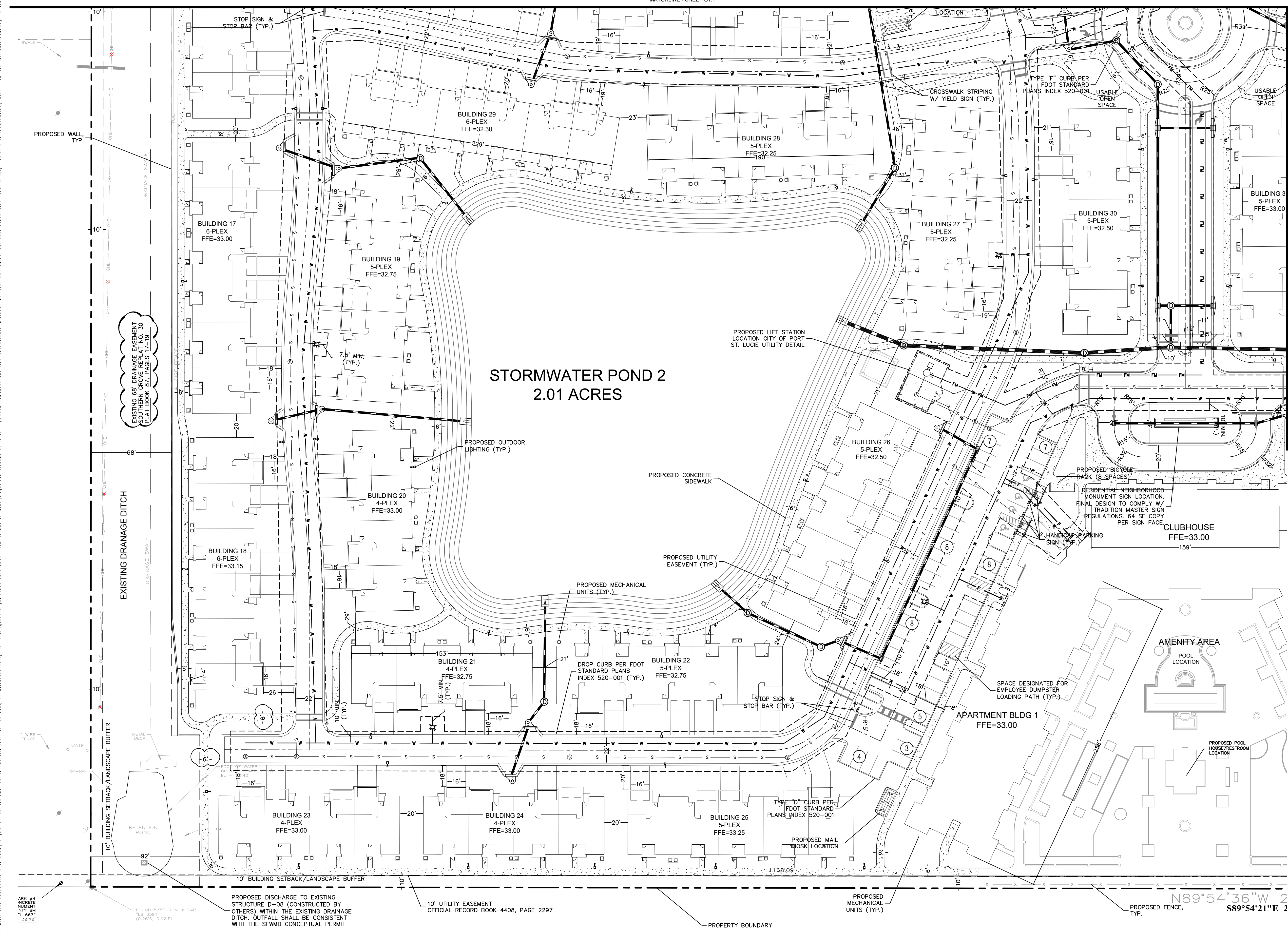
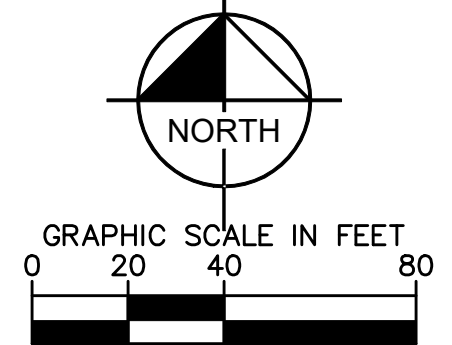


Plotted By: Rivera, Jeffrey. Sheet: S17-AMERICA WALKS. Layout: C1.3. November 25, 2020. 11:19:37am. K:\ORL_Civil\44948001-America Walks\CAADD\DEVELOPMENT\Correct. Site Plan\2020-04-04 - CORRECT FILES 2020\PlanSheets\C1.0 - SITE PLAN.dwg
 This document, together with the concepts and designs presented herein, as an instrument of service, is intended only for the specific purpose and client for which it was prepared. Reuse of and improper reliance on this document without written authorization and adaptation by Kimley-Horn and Associates, Inc. shall be without liability to Kimley-Horn and Associates, Inc.



LEGEND

	PROPERTY BOUNDARY
	PROPOSED CENTERLINE
	PROPOSED CONCRETE SIDEWALK
	EXISTING POTABLE WATER MAIN
	EXISTING RECLAIM WATER MAIN
	EXISTING FORCE MAIN
	EXISTING FIBER OPTIC
	PROPOSED UTILITY EASEMENT
	PROPOSED STORM INFRASTRUCTURE
	PROPOSED POTABLE WATER MAIN
	PROPOSED SANITARY SEWER MAIN
	PROPOSED FORCE MAIN
	PROPOSED SANITARY SEWER MANHOLE

No.	REVISIONS	DATE	BY

Kimley»Horn
 © 2020 KIMLEY-HORN AND ASSOCIATES, INC.
 189 S. ORANGE AVENUE, SUITE 1000, ORLANDO, FL 32801
 PHONE: 407-895-1511
 WWW.KIMLEY-HORN.COM CA 00000696

LICENSED PROFESSIONAL	BROOKS A. STICKLER, P.E.
KHA PROJECT	149948001
DATE	11/24/2020
SCALE	AS SHOWN
DESIGNED BY	ST
DRAWN BY	ST
CHECKED BY	BAS
DATE:	2020
FLORIDA LICENSE NUMBER	74031

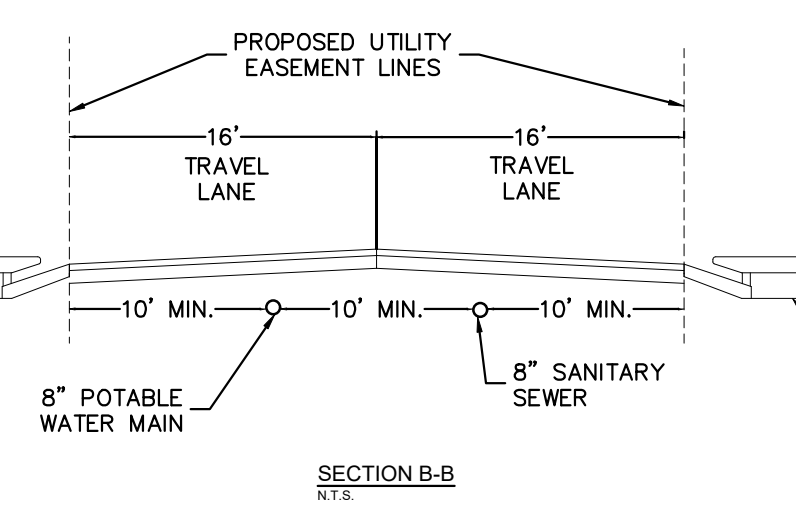
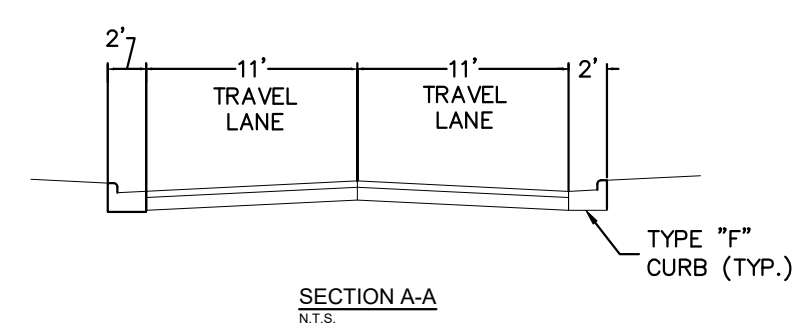
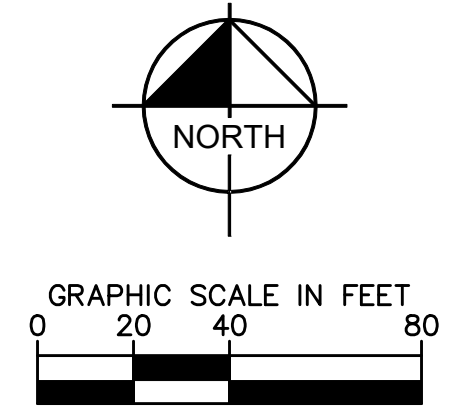
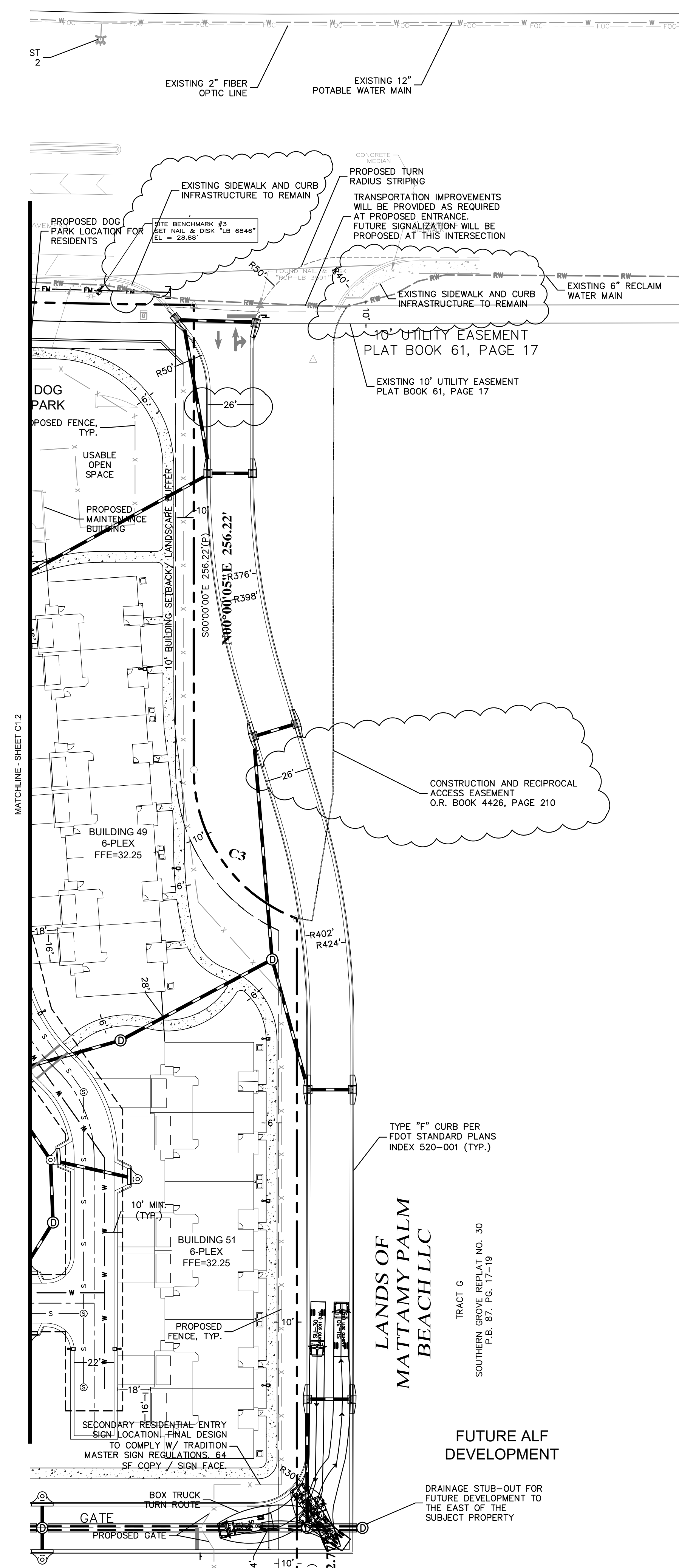
SITE PLAN

AMERICA WALKS
 CITY OF PORT ST. LUCIE
 FLORIDA

PSLUSD PROJECT NO. 5355
 CITY OF PSL PROJECT NO. 20-039 A-1

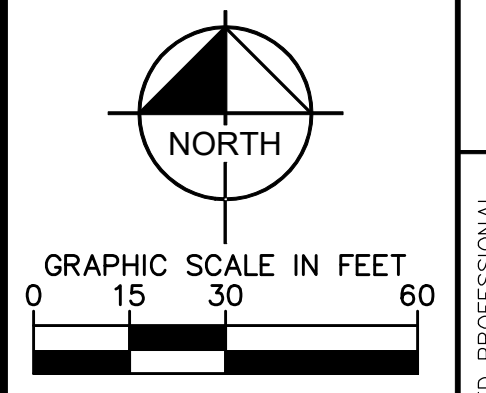
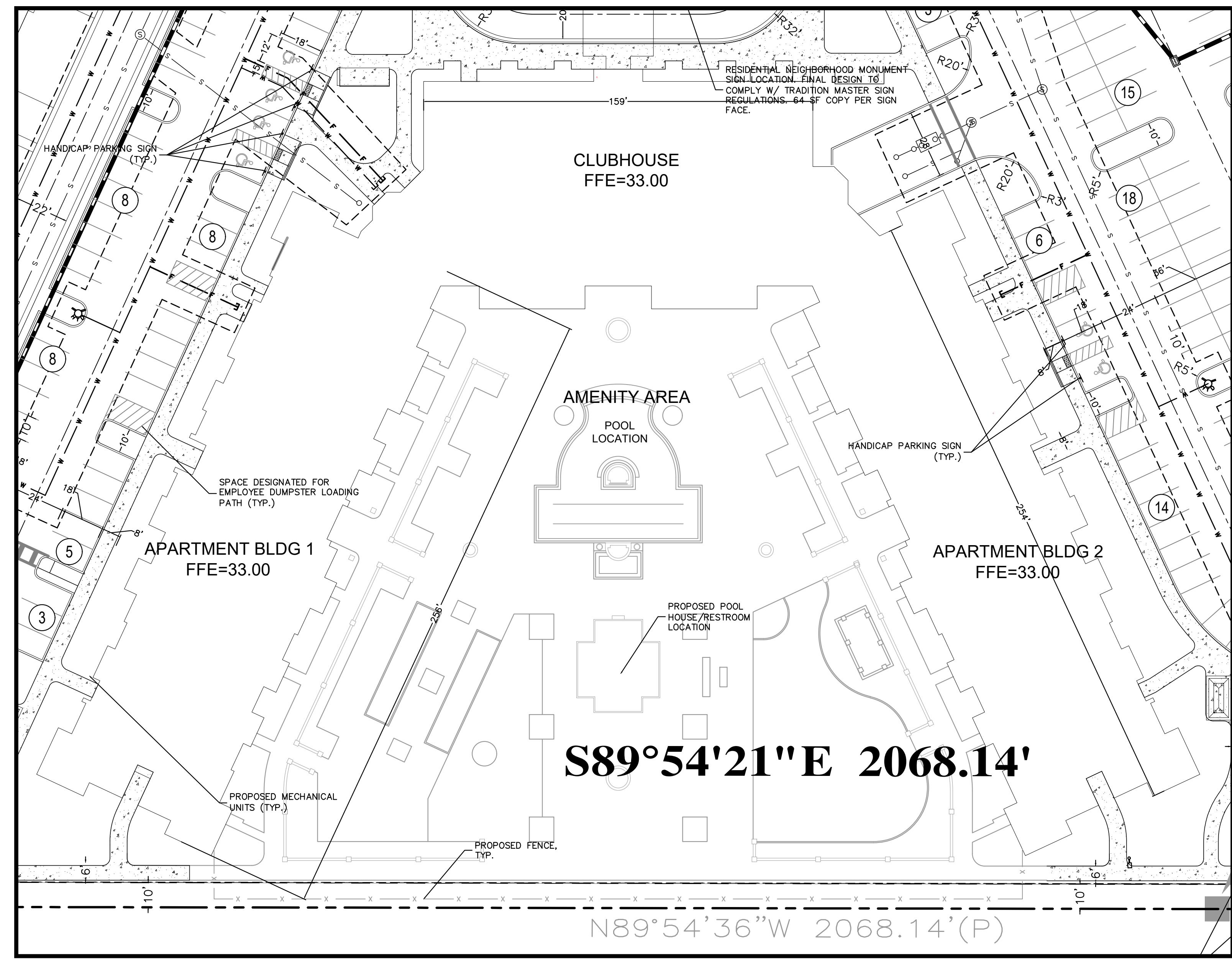
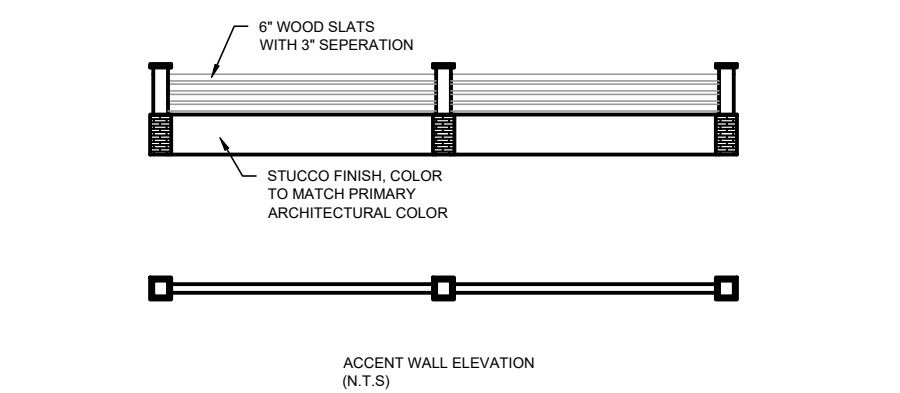
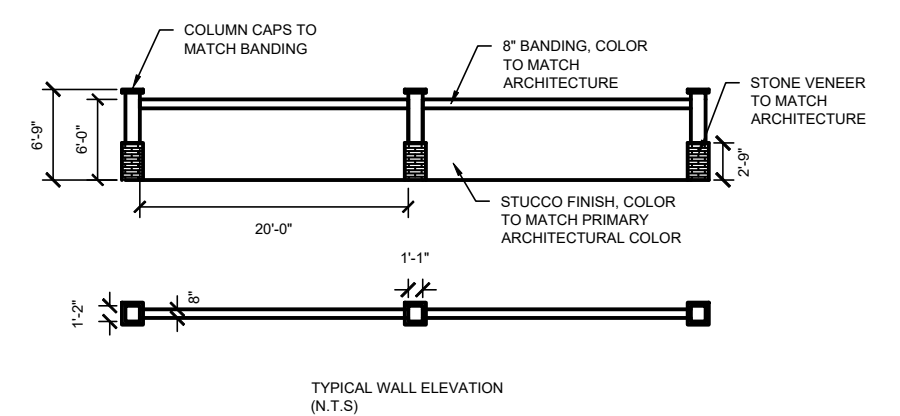
SHEET NUMBER
C1.3

Plotted By: Rivero, Jeffrey. Sheet: SHT-AMERICA WALKS. Layout: C1.5. November 25, 2020. 11:20:16am. K:\ORL_DWG\149948001-America Walks\CA00\DEVELOPMENT\Correct_Site Plan\2020-04-02 - CORRECT FILES 2020\PlanSheets\C1.0 - SITE PLAN.dwg
 This document, together with the concepts and designs presented herein, is intended only for the specific purpose and client for which it was prepared. Reuse of and improper reliance on this document without written authorization and adaptation by Kimley-Horn and Associates, Inc. shall be without liability to Kimley-Horn and Associates, Inc.



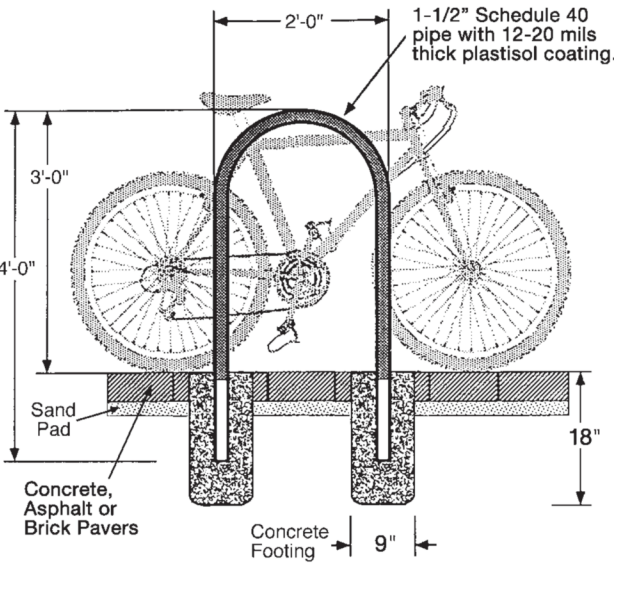
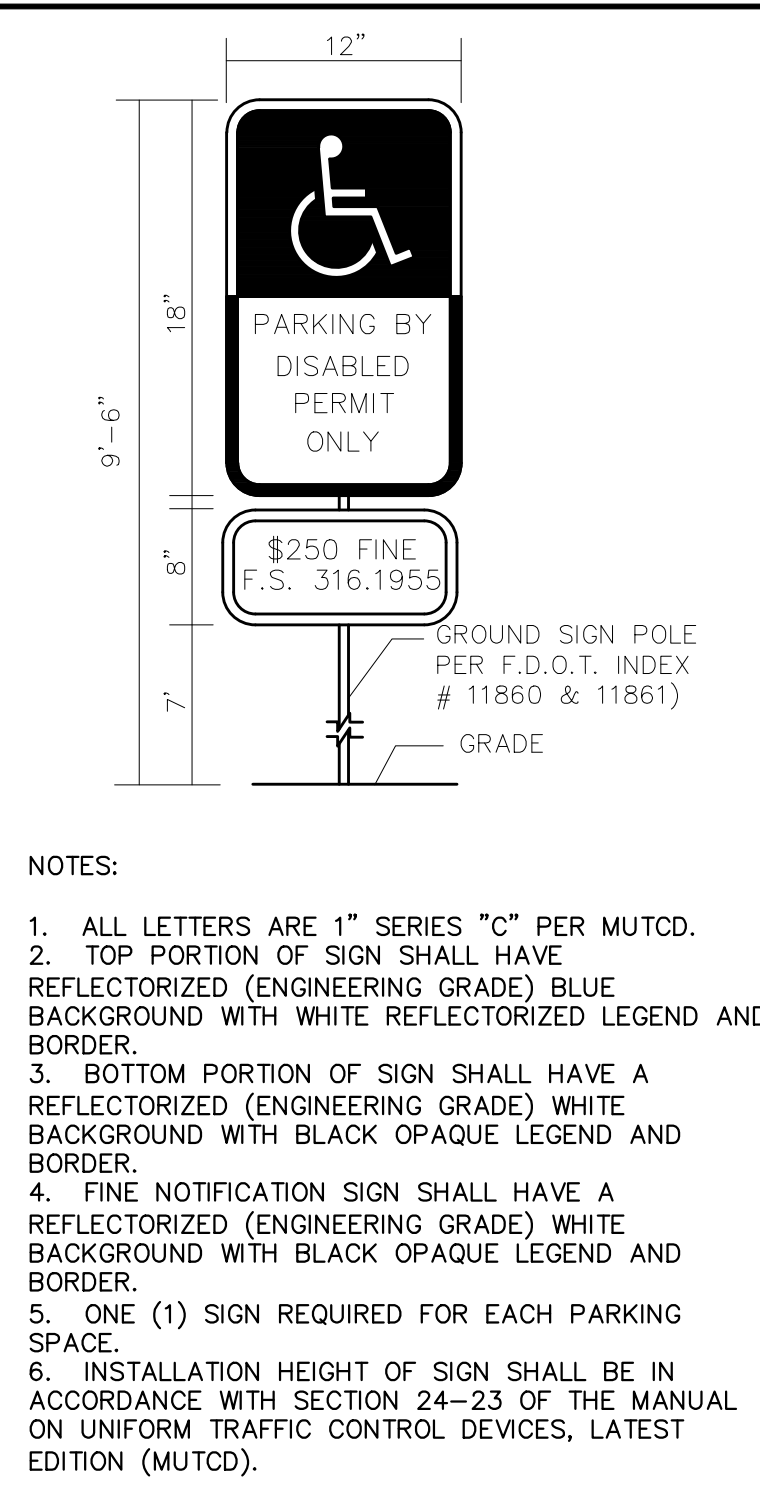
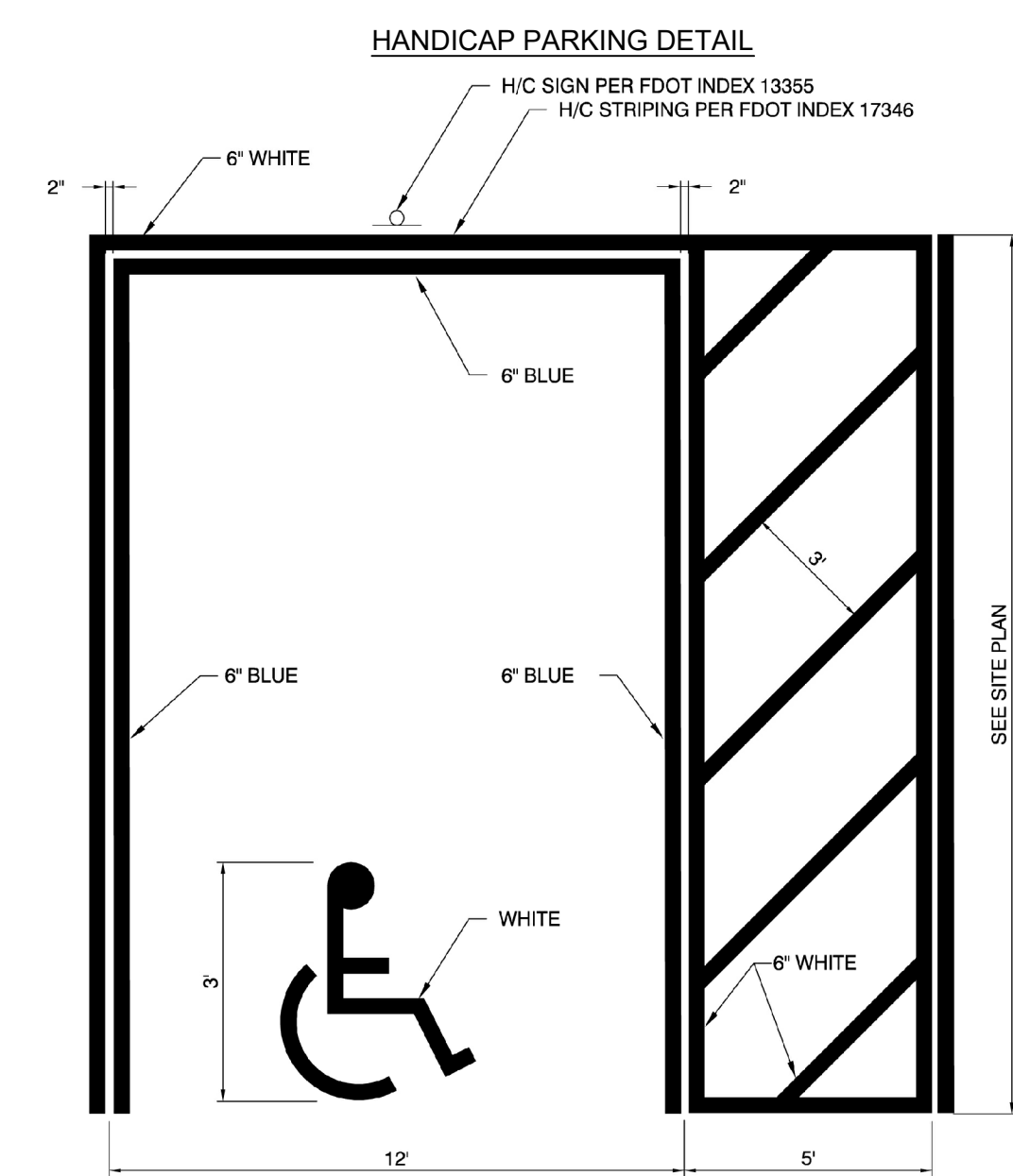
LEGEND

- PROPERTY BOUNDARY
- PROPOSED CENTERLINE
- PROPOSED CONCRETE SIDEWALK
- EXISTING POTABLE WATER MAIN
- EXISTING RECLAIM WATER MAIN
- EXISTING FORCE MAIN
- EXISTING FIBER OPTIC
- PROPOSED UTILITY EASEMENT
- PROPOSED STORM INFRASTRUCTURE
- PROPOSED POTABLE WATER MAIN
- PROPOSED SANITARY SEWER MAIN
- PROPOSED FORCE MAIN
- PROPOSED SANITARY SEWER MANHOLE



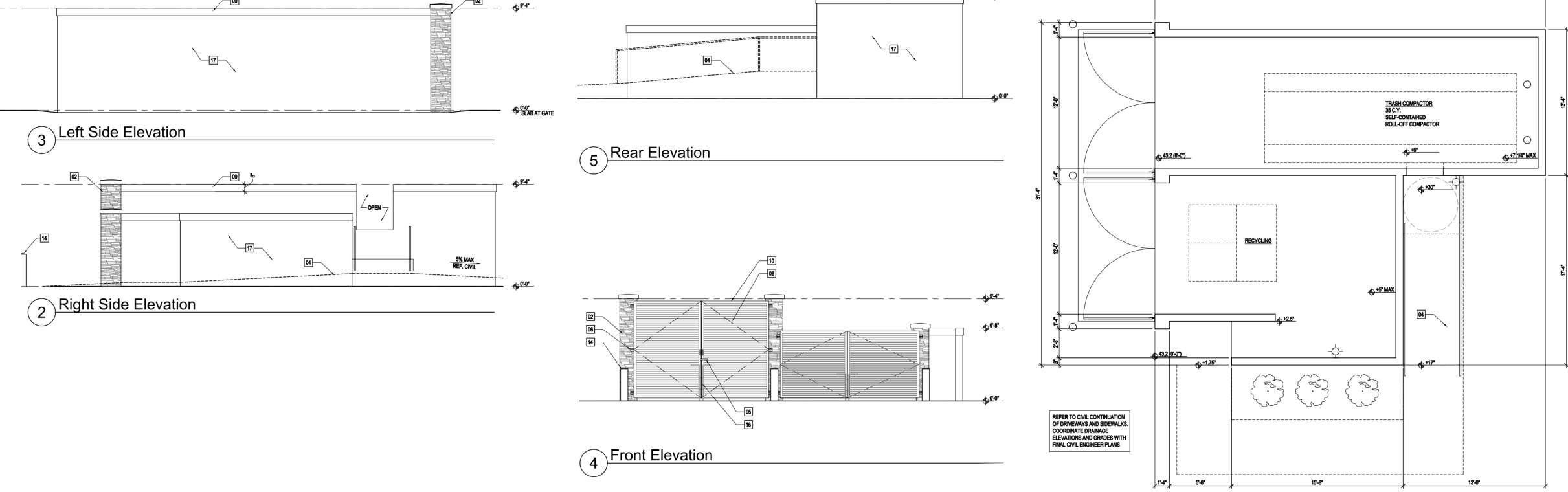
KIMLEY-HORN		LICENSED PROFESSIONAL	
© 2020 KIMLEY-HORN AND ASSOCIATES, INC. 189 S. ORANGE AVENUE, SUITE 1000, ORLANDO, FL 32801 PHONE: 407-895-1511 WWW.KIMLEY-HORN.COM CA 00000696		BROOKS A. STICKLER, P.E. FLORIDA LICENSE NUMBER 74031 DATE: 2020	
KHA PROJECT 149948001	DATE 11/24/2020	SCALE AS SHOWN	DESIGNED BY ST
		DRAWN BY ST	CHECKED BY BAS
AMERICA WALKS		SITE PLAN	
CITY OF PORT ST. LUCIE		FLORIDA	
PSLUSD PROJECT NO. 5355 CITY OF PSL PROJECT NO. 20-039 A-1		SHEET NUMBER C1.5	
		REVISIONS	
		DATE	

Plotted By: Rivera, Jeffrey. Sheet: AMERICA WALKS. Layout: C1.6. November 25, 2020. 11:20:50am. K:\ORL\Civil\148948001-America Walks\CADD\DEVELOPMENT\Correct. Site Plan\2020-04-02 - CORRECT FILES\2020-04-02 - SITE PLAN.dwg
 This document, together with the concepts and designs presented herein, is an instrument of service. It is intended only for the specific purpose and client for which it was prepared. Reuse of any portion of this document without written authorization and adaptation by Kimley-Horn and Associates, Inc. shall be without liability to Kimley-Horn and Associates, Inc.

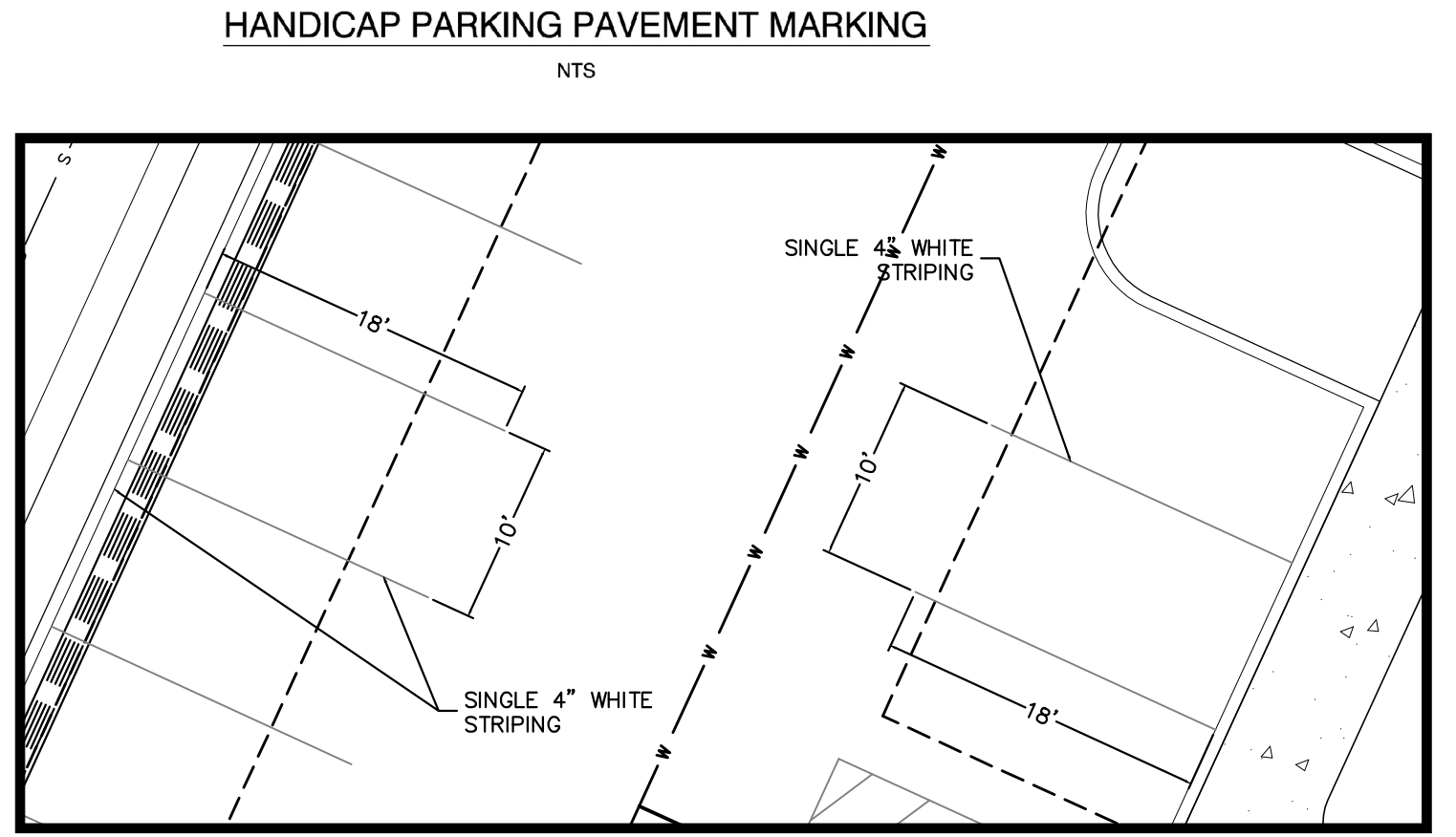


BIKE RACK DETAIL
NTS

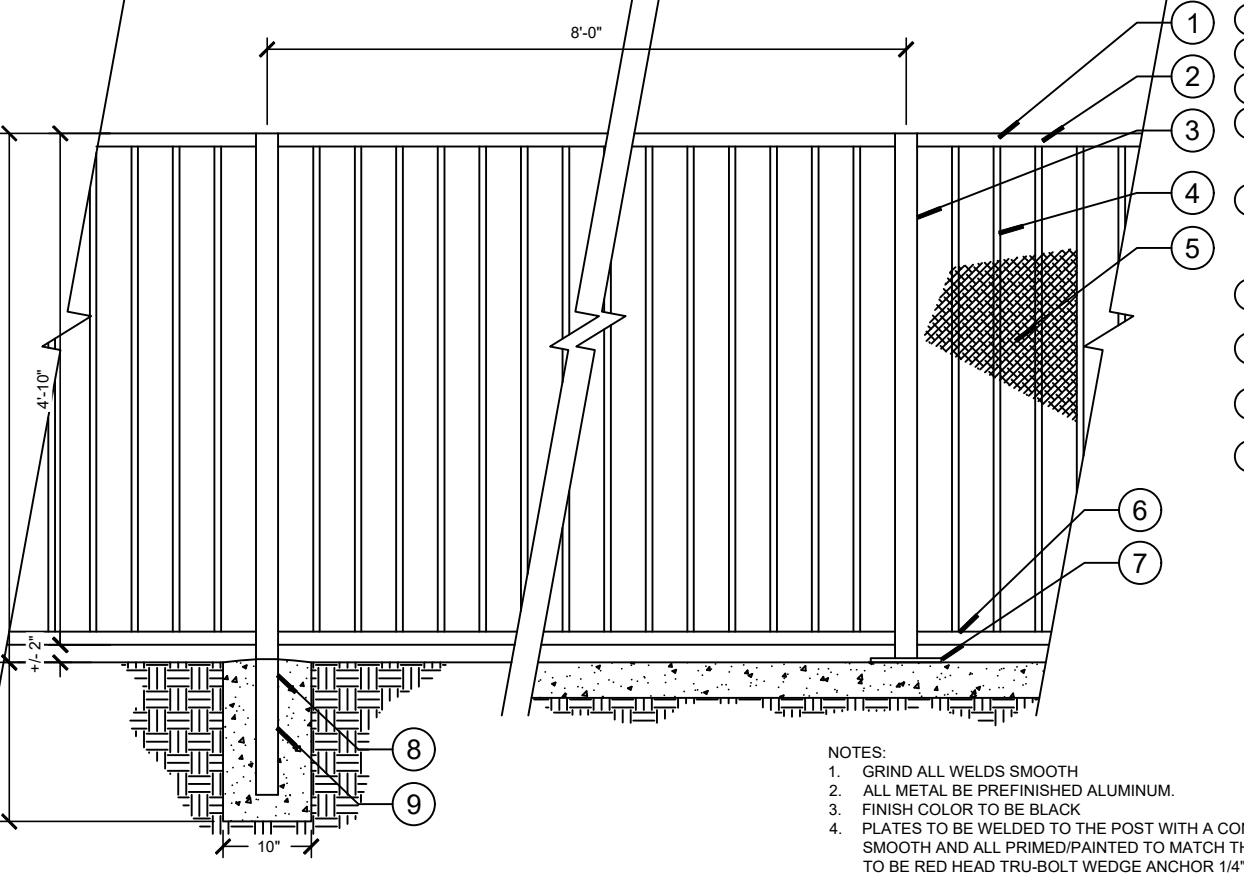
- KEY NOTES**
- TRASH COMPACTOR INSTALLED BY OTHERS. CONTRACTOR SHALL SUPPLY ALL REQUIRED WIRING, CONNECTIONS AND STRUCTURAL FASTENERS PER MANUFACTURER SPECIFICATIONS. VERIFY COMPACTOR MANUFACTURER PRIOR TO COMMENCEMENT.
 - STONE VENEER
 - ARCHITECTURAL CAST STONE COLUMN CAP
 - ADA COMPLIANT SIDEWALK PER CIVIL
 - STAINLESS STEEL LATCH
 - GATE HINGE PIN, TYP. OF 3 PER GATE
 - FLOOR SLAB: 8" THICK HEAVY DUTY CONCRETE SLAB PER STRUCTURAL BRUSHED FINISH
 - ALUMINUM COVERS, PROVIDE INTERMEDIATE SUPPORTS AND ATTACH TO FRAME AS REQUIRED
 - RAISED STUCCO BAND, SLOPE TOP OF WALL TO INSIDE
 - 4"x1 3/4" ALUMINUM WELDED GATE FRAME
 - 3/8" STEEL PLATE
 - URETHANE SEALANT
 - 3/4" ANCHOR BOLT, 1/2" MIN EMBED INTO FILLED CELL
 - 8" GALVANIZED STEEL CONCRETE FILLED BOLLARD. REFER TO STRUCTURAL DRAWINGS FOR FOOTING REQUIREMENTS. REFER TO CIVIL FOR EXACT BOLLARD LOCATION AT GATES
 - CONCRETE APRON, EXTEND SLAB BEYOND ENCLOSURE. CONFIRM LENGTH WITH TRASH COMPACTOR VENDOR
 - 2" GALVANIZED STL. CANE BOLT PROVIDE SLOTS @ OPEN & CLOSED GATE POSITIONS
 - 8" CMU WALL, STRUCK FLUSH & PAINTED ON INSIDE. COLOR PER OWNER, 5/8" PAINTED STUCCO FINISH ON OUTSIDE
 - (2) 5/4" FIBER CEMENT TRIM BLOCKING
 - FULLY MORTAR BRICK CELLS AND THE JOINT BETWEEN THE CMU



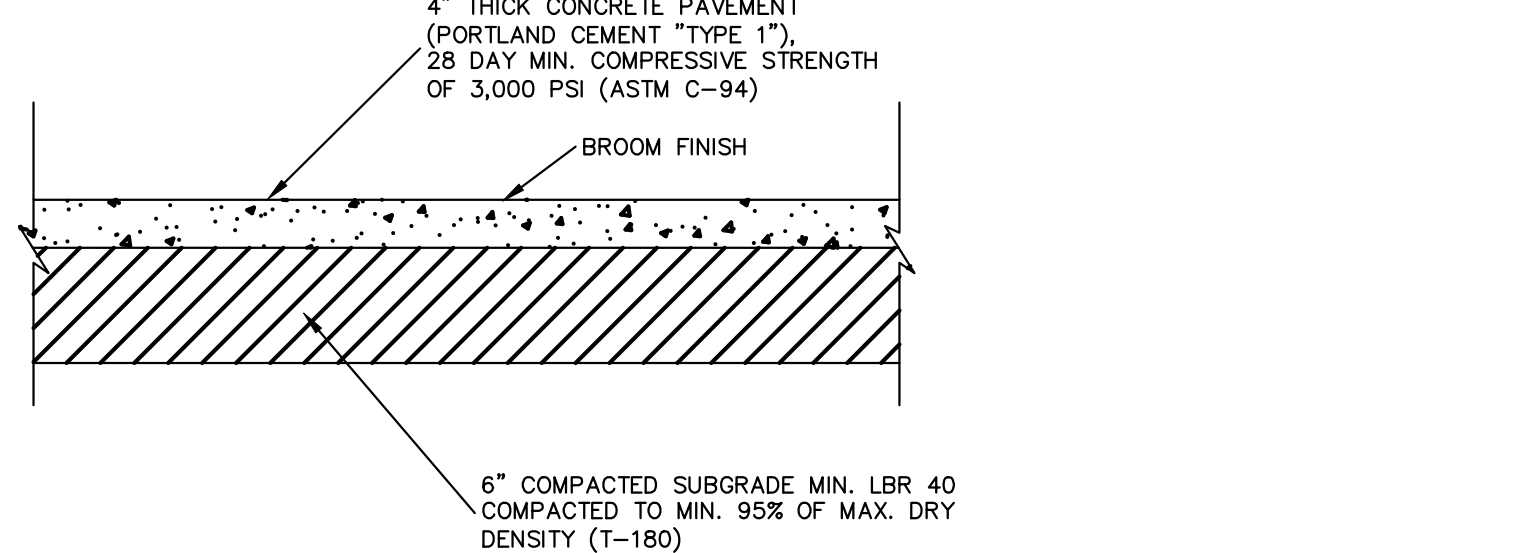
DUMPSTER ENCLOSURE DETAIL
NTS



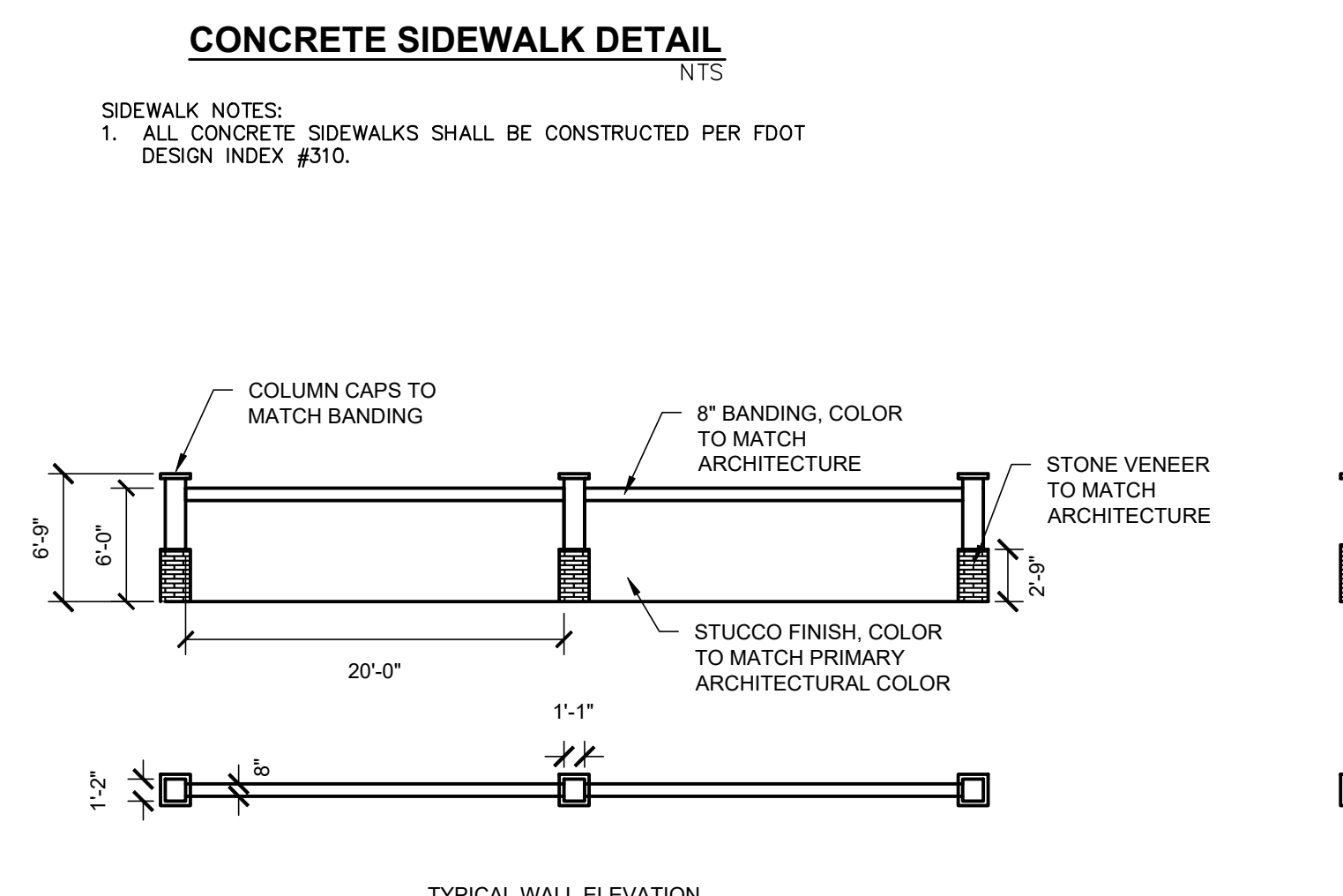
HANDICAP SIGN DETAIL
NTS



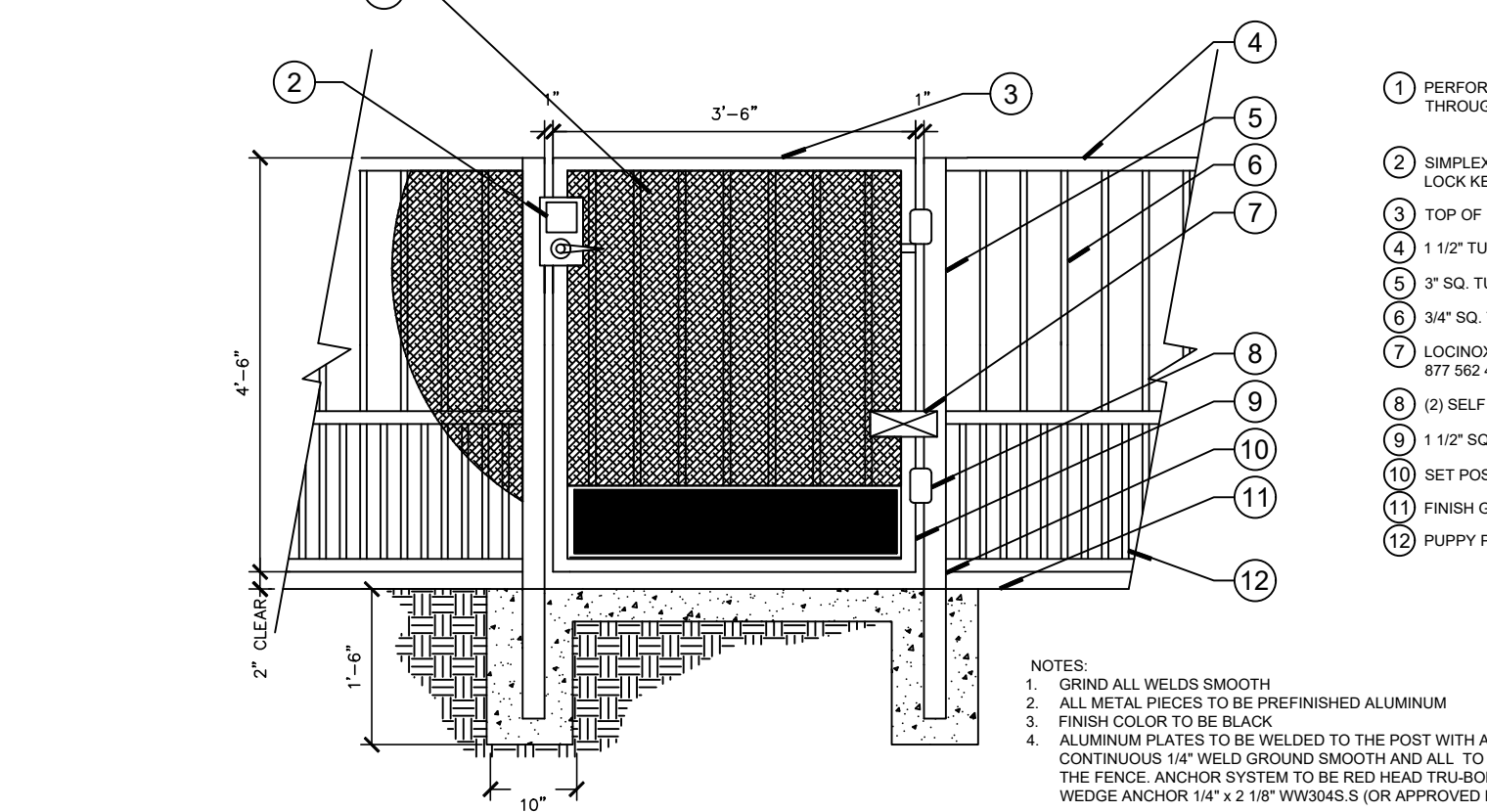
POOL FENCE DETAIL
NTS



STANDARD PARKING DETAIL
NTS



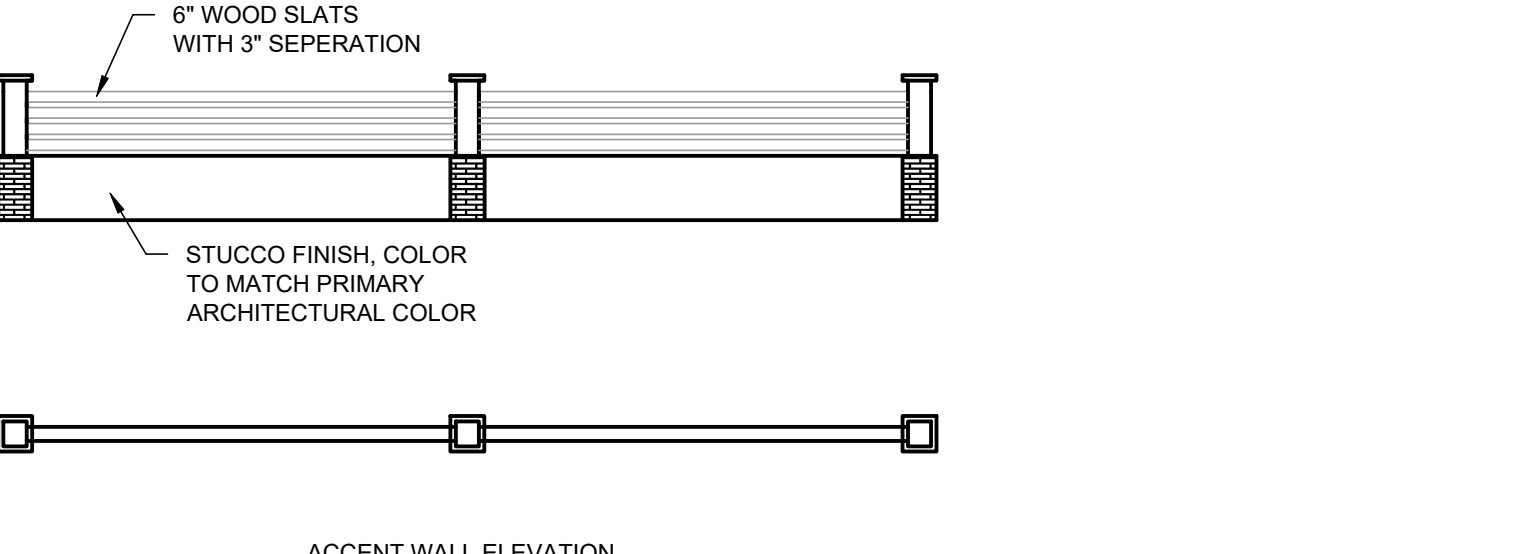
CONCRETE SIDEWALK DETAIL
NTS



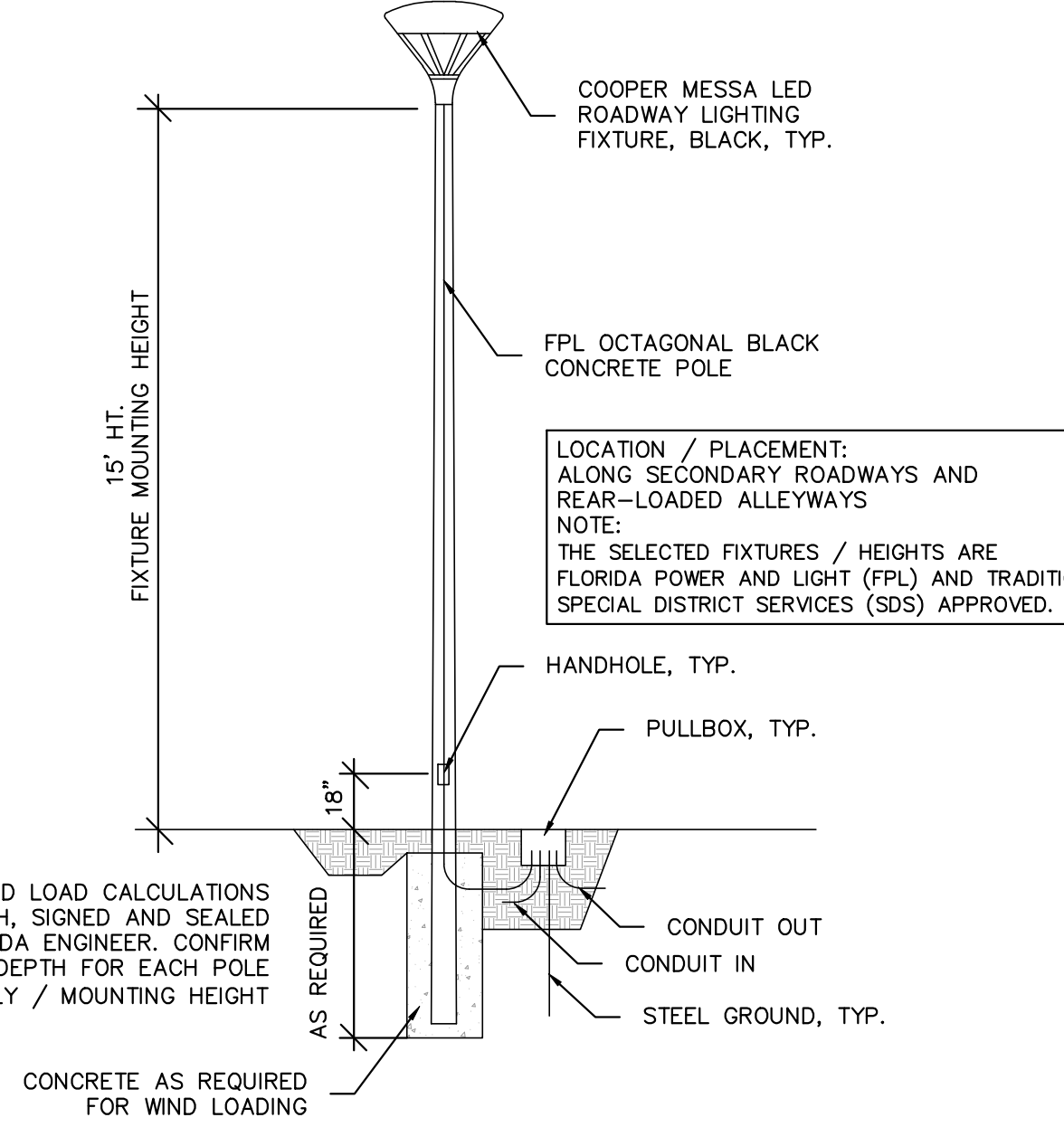
DOG PARK FENCE DETAIL
NTS



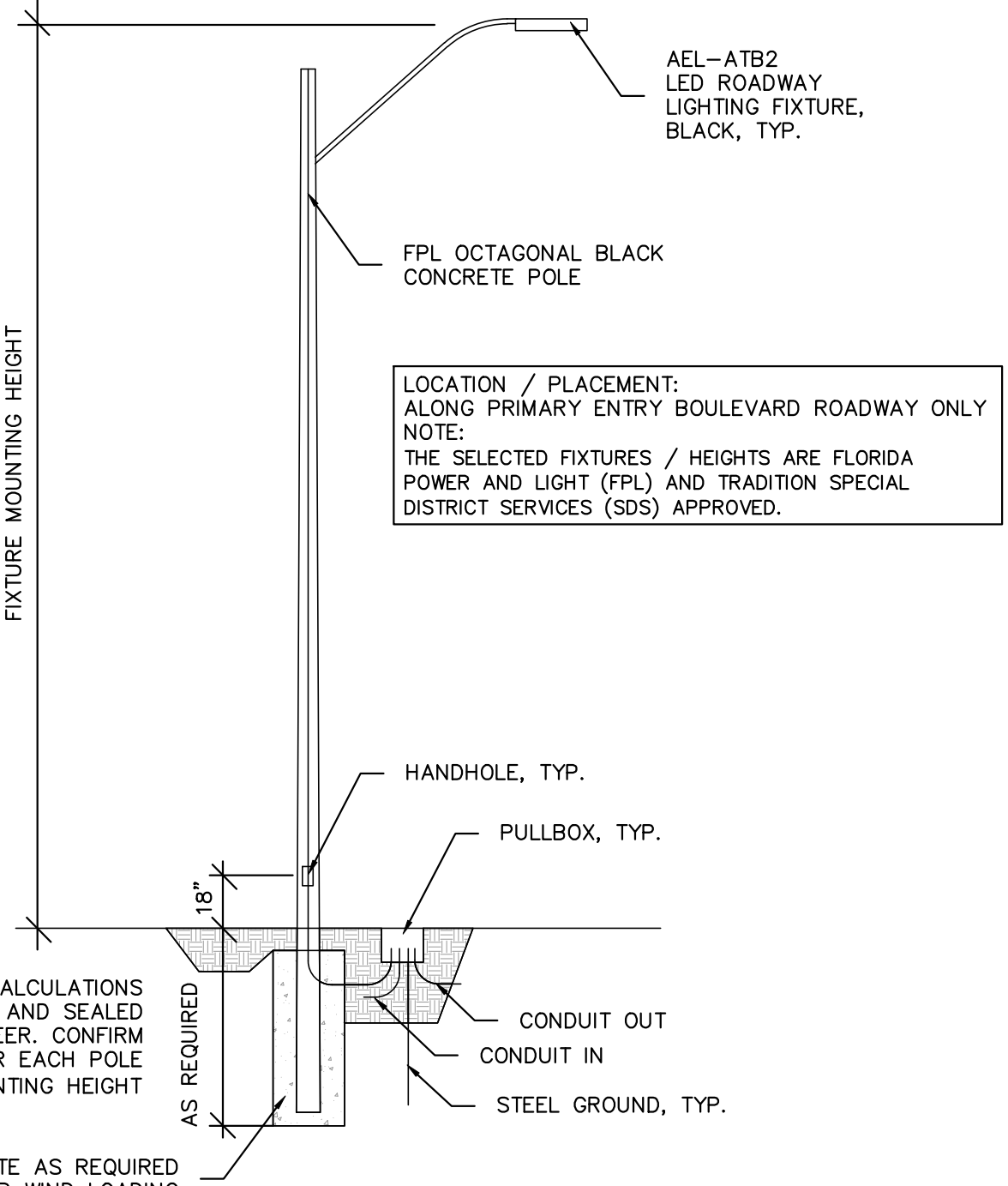
PERIMETER WALL DETAIL
NTS



ACCENT WALL ELEVATION



SITE LIGHTING DETAIL
NTS



SITE LIGHTING DETAIL
NTS

Invue	
Catalog #	Type
Project	Date
Comments	
Prepared By	

MSA MESA LED
1-6 LightBARS
Solid State LED
DECORATIVE LUMINAIRE

DESCRIPTION
The geometric form of MESA LED luminaire allows it to adapt to either contemporary or traditional architectural settings. Available in single or twin pole mount configurations with optional wall mounting capability, the MESA LED luminaire's mounting options allow for harmonized site design whether at the entry or in the parking lot. ULULU, listed for use in wet locations.

CONSTRUCTION
MESHING Die-cast aluminum main housing and spider mount base maintain a minimum 0.125 wall thickness. Integral aluminum heat sink provides superior thermal heat transfer in 40°C ambient environments. COOL ASSEMBLY Top mounted, heavy wall, die-cast aluminum door maintains a nominal 0.125 thickness. Door includes self-extinguishing fire-rated hinge GASKET. Continuous silicone gasket provides for seal housing door assembly and optic tray. LENS Downlight lens is LED board integrated acrylic over-optic, each individually sealed for IP66 rating. HARDWARE Four sheet fasteners in underside of housing provide access to luminaire interior. Concealed, stainless steel four bar hinge lock allows door to lock in the open position.

OPTICS
Choice of twelve patented, high efficiency AcuoLED Optics™ technology manufactured from injection-molded acrylic. Optics are precisely designed to shape the light output, maximizing efficiency and application spacing. AcuoLED Optic technology, creates consistent distribution with the stability to meet customized application requirements. Offered Standard in 4000K (Lx: 278K CCT and 19000K CCT) and 5000K CCT. For the ultimate level of light control, an optional house side shade enclosure can be field or factory installed. The house side shade is designed to seamlessly integrate with the S.L.S. S.L. or S.L.4 optics. LightBARS optic tray is removable and able to rotate 90° in 90° increments for specific placement of the distribution relative to fixture.

ELECTRICAL
LED drivers mount to die-cast aluminum back housing for optimal heat sinking, operation efficiency, and prolonged life. Standard drivers feature electronic universal voltage 120V/277V/300VAC, 347V, 60Hz or 480V/576V operation, greater than 0.9 power factor, less than 20% harmonic distortion, and is suitable for operation in 40°C to 60°C ambient environments. All fixtures are shipped standard with 10W/10A common - and differential - mode surge protection. LightBARS feature and IP66 enclosure rating and maintain greater than 90% lumen maintenance at 60,000 hours per IESNA TM-21. Occupancy sensor and dimming options available.

INSTALLATION
Filter assembly mounts over 3" O.D. screw and is secured via three concealed stainless steel set screws. Installation is achieved via seamless transition to 4" round poles. Additional mounting accessories include a dual fixture post top mounting arm and wall mount arm.

FINISH
Housing is finished in five stage super TDC polyester powder coat paint 2.5 mil nominal thickness for superior protection against fade and wear. LIGHTBARS™ optic plates are standard white and may be specified to match finish of luminaire housing. Standard colors include black, bronze, grey, white, dark platinum and graphite metallic. RAL and custom color matches available. Consult Outdoor Architectural Color brochure for a complete selection.

WARRANTY
Five year warranty.

CERTIFICATION DATA
UL9891 Class 1
UL9892 Class 2
UL9893 Class 3
UL9894 Class 4
UL9895 Class 5
UL9896 Class 6
UL9897 Class 7
UL9898 Class 8
UL9899 Class 9
UL9900 Class 10
UL9901 Class 11
UL9902 Class 12
UL9903 Class 13
UL9904 Class 14
UL9905 Class 15
UL9906 Class 16
UL9907 Class 17
UL9908 Class 18
UL9909 Class 19
UL9910 Class 20
UL9911 Class 21
UL9912 Class 22
UL9913 Class 23
UL9914 Class 24
UL9915 Class 25
UL9916 Class 26
UL9917 Class 27
UL9918 Class 28
UL9919 Class 29
UL9920 Class 30
UL9921 Class 31
UL9922 Class 32
UL9923 Class 33
UL9924 Class 34
UL9925 Class 35
UL9926 Class 36
UL9927 Class 37
UL9928 Class 38
UL9929 Class 39
UL9930 Class 40
UL9931 Class 41
UL9932 Class 42
UL9933 Class 43
UL9934 Class 44
UL9935 Class 45
UL9936 Class 46
UL9937 Class 47
UL9938 Class 48
UL9939 Class 49
UL9940 Class 50
UL9941 Class 51
UL9942 Class 52
UL9943 Class 53
UL9944 Class 54
UL9945 Class 55
UL9946 Class 56
UL9947 Class 57
UL9948 Class 58
UL9949 Class 59
UL9950 Class 60
UL9951 Class 61
UL9952 Class 62
UL9953 Class 63
UL9954 Class 64
UL9955 Class 65
UL9956 Class 66
UL9957 Class 67
UL9958 Class 68
UL9959 Class 69
UL9960 Class 70
UL9961 Class 71
UL9962 Class 72
UL9963 Class 73
UL9964 Class 74
UL9965 Class 75
UL9966 Class 76
UL9967 Class 77
UL9968 Class 78
UL9969 Class 79
UL9970 Class 80
UL9971 Class 81
UL9972 Class 82
UL9973 Class 83
UL9974 Class 84
UL9975 Class 85
UL9976 Class 86
UL9977 Class 87
UL9978 Class 88
UL9979 Class 89
UL9980 Class 90
UL9981 Class 91
UL9982 Class 92
UL9983 Class 93
UL9984 Class 94
UL9985 Class 95
UL9986 Class 96
UL9987 Class 97
UL9988 Class 98
UL9989 Class 99
UL9990 Class 100

AEL American Electric Lighting

Autobahn ATB2 LED Roadway Luminaire

For more than 60 years, the American Electric Lighting name has been recognized for the highest quality and reliability in outdoor, utility and infrastructure lighting.

Designed to replace up to 400 watt HPS cobraheads, the virtually maintenance-free Autobahn ATB2 uses breakthrough LEDs and precision-engineered optics to provide exceptional illumination while also saving energy - typically 60% or more. Plus, it works seamlessly with the Acuity Brands outdoor controls systems to maximize energy and maintenance savings through enhanced monitoring and control functions.

Lightweight, reliable and extremely efficient, the Autobahn Series is the definitive choice for roadway lighting renovation and improving sustainability in your infrastructure.

Key Selling Points

- High performance energy efficient solution for high speed roadways, highway access ramps, and area lighting applications
- 40-60% more efficient than comparable HID luminaires
- Steak attractive dayform with weight and EPA less than comparable cobraheads
- Leading edge optics improve visibility on roadways
- Nighttime Friendly™
- Tool-less features
- Designed to operate at 40°C ambient
- Best-in-class surge protection efficiency (Ipwl)
- Municipalities: Energy efficiency and holistic longevity make it the ultimate sustainable solution for renovating legacy streetlights
- Utilities: Lineman-friendly features make it easy to install, its long, reliable operating life reduces the hassle of lighting grid maintenance (especially when paired with RGM smart control)

Quick Facts

- 250-400 watt HPS replacement
- ANSI 20kV/10kA Surge Protection
- Weight-21 lbs
- Types 2, 3, 4, & 5 Distributions
- 3000, 4000K & 5000K CCT, 70CRI minimum
- IGEM Compatible
- Removable "Power Door" standard

Applications

- Municipal Streets and Public Roadways
- Residential Areas
- Compuces
- Military Bases
- Industrial Parks
- Hotels and Resorts
- Municipal Parks
- Recreation Centers

Kimley»Horn
© 2020 KIMLEY-HORN AND ASSOCIATES, INC.
189 S. ORANGE AVENUE, SUITE 1000, ORLANDO, FL 32801
PHONE: 407-898-1511
WWW.KIMLEY-HORN.COM CA 0000696

LICENSED PROFESSIONAL
BROOKS A. STICKLER, P.E.
KHA PROJECT 149948001
DATE 11/24/2020
SCALE AS SHOWN
DESIGNED BY ST
DRAWN BY ST
CHECKED BY BAS
DATE: 2020

FLORIDA LICENSE NUMBER 74031

AMERICA WALKS
CITY OF PORT ST. LUCIE
FLORIDA

SHEET NUMBER
C1.6

REVISIONS
DATE
BY