

Landscape Data

Perimeter Landscaping Adjacent to Road Right-of-way

Trees
Required - (1 Tree/30 Lf.) - 880.01 Lf./30 = 29 Trees
Provided - 29 Trees

Shrubs
Required - Continuous Hedge 2' O.C. = 440 Shrubs
Provided - 440 Shrubs

Perimeter Landscaping Adjacent to Another Property

Trees
Required: (1 Tree/30 Lf.) - 1,665 Lf./30 = 56 Trees
Provided: 56 Trees

Shrubs
Required: Continuous Hedge 2' O.C. = 833 Shrubs
Provided: 833 Shrubs

Parking Area Interior Landscaping

Required Terminal/Interior Island Trees - 1 Tree per Terminal/Interior Island = 14 Trees
Total Terminal/Interior Island Trees Provided = 14 Trees
(Some relocated to dry retention for additional water cleansing)

Palm Requirements

Required - No more than 25% of required trees may be palms
Total Trees & Palms = 151
Total Palms = 0 x 2 @ 2:1 = 0
Provided: Palms = 0 / 2 = 0 / 151 = 0%

Total Trees:

Total Trees Required: 151
Total Trees Provided: 151
151 Trees + 0 Palms @ 2:1 = 0 Trees = 151 Trees

Native Plants

Required: 50% of all required trees shall be native
Total Trees = 151
Provided: Native Trees = 122 / 151 = 80%

Shrubs:
Required: 25% of all required shrubs shall be native
Total Shrubs = 2,595
Provided: Native Shrubs = 2,595 / 2,595 = 100%

Flowering Trees

Required: 20% of all required trees shall be flowering
Total Trees = 151 (Not Including Palms) x 20% = 31
Provided: Flowering Trees = 31 = 20%

Landscape Island Evergreen Shade Trees

Required: 75% of all required trees located within landscape islands shall be evergreen shade trees
Total Landscape Islands = 14 x 75% = 11 Trees
Provided: Landscape Islands with Evergreen Shade Trees = 11 = 75%

Tree Species Mix

Required: When 41+ trees are required the minimum species mix = 5
Provided: 7

Building Facades

Trees

Required - 1 Tree / 30 Lf. of Building Perimeter
1,565 Lf. of Building Perimeter / 30 Lf. = 52 Trees
Provided - 52 (Some relocated to dry retention for additional water cleansing)

Shrubs

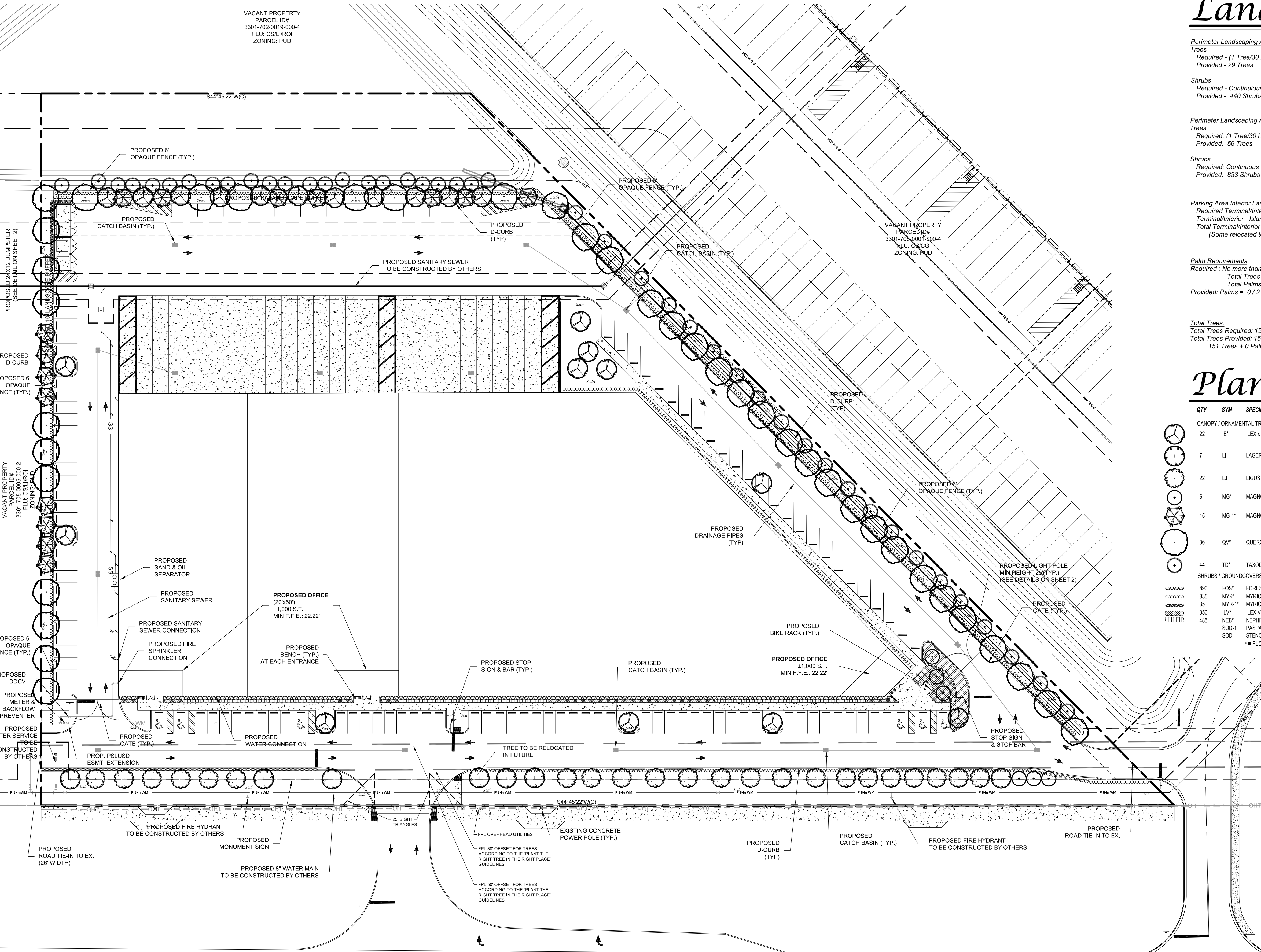
Require - 1 Shrub / 1.5 Lf. of Building Perimeter
Excluding Paved Access Areas = 860 Lf. x 1.5 = 1,290 Shrubs
Provided - 1,290 Shrubs

Dumpster

Required - Hedge / Vine 2' O.C. 64 Lf. / 2 = 32 Shrubs
Provided - 32 Shrubs

Plant List

QTY	SYM	SPECIES	COMMON NAME/DESCRIPTION	SIZE	SPACING	REMARKS	DROUGHT TOLERANCE
22	IE	ILEX ATTENUATA 'EAGLESTON'	EAGLESTON HOLLY	14' x 5', 2.5' CAL.	A.S.	FULL CANOPY, 4' C.T. MIN.	HIGH
7	LI	LAGERSTROEMIA INDICA 'TUSKEGEE'	CREPE MYRTLE 'RED'	14' x 5', 2.5' CAL.	A.S.	FULL CANOPY, 4' C.T. MIN.	HIGH
22	LJ	LIGUSTRUM JAPONICUM	LIGUSTRUM TREE FORM	14' x 5', 2.5' CAL.	A.S.	FULL CANOPY, 4' C.T. MIN.	HIGH
6	MG*	MAGNOLIA GRANDIFLORA	LITTLE GEM MAGNOLIA	14' x 5', 2.5' CAL.	A.S.	FULL CANOPY, 4' C.T. MIN.	HIGH
15	MG-1*	MAGNOLIA GRANDIFLORA	SOUTHERN MAGNOLIA D.D. BLANCHARD	14' x 5', 2.5' CAL.	A.S.	FULL CANOPY, 4' C.T. MIN.	HIGH
36	QV*	QUERCUS VIRGINIANA	LIVE OAK	14' x 5', 2.5' CAL.	A.S.	FULL CANOPY, 4' C.T. MIN.	HIGH
44	TD*	TAXODIUM DISTICHUM	BALD CYPRESS	14' x 5', 2.5' CAL.	A.S.	FULL CANOPY, 4' C.T. MIN.	HIGH
890	FOS*	FORESTIERA SEGREGATA	FLORIDA PRIVET	#3, 2' x 2	2' O.C.	FULL & THICK	HIGH
835	MYR*	MYRICANTHES FRAGRANS	SIMPSON STOPPER	#3, 2' x 2	2' O.C.	FULL & THICK	HIGH
35	MYR-1*	MYRICANTHES FRAGRANS	SIMPSON STOPPER	#7, 4' x 2	2' O.C.	FULL & THICK	HIGH
350	ILV*	ILEX VOMITORIA	DWARF YALPON HOLLY	#3, 12" x 12"	2' O.C.	FULL & THICK	HIGH
485	NEB*	NEPHROLEPIS EXALATA	BOSTON FERN	#1, 12" x 12"	3' O.C.	FULL & THICK	HIGH
	SOD-1	PASPALIUM NOTATUM	BAHIA SOD	SEE SPECS			HIGH
	SOD	STENOTAPHRUM SECUNDATUS	ST. AUGUSTINE SOD	SEE SPECS			LOW - MEDIUM



GLADES CUT-OFF ROAD

Port St. Lucie Utility Systems Department Notes

- No landscaping shall be planted in such a manner as to adversely affect drainage or utility easements.
- Trees with a maximum mature height great enough to interfere with overhead power lines shall not be planted below overhead power lines. Such trees with a maximum mature height less than the height of the overhead power line shall be selected from Appendix C, Table 1, Type B Trees. No tree shall be planted within 10 feet of any existing utility pole, guy wire, or pad mounted transformer (See FR&L's publication "Plant the Right Tree in the Right Place" for placement and maintenance requirements.).
- All landscaping within Port St. Lucie Utility Systems Department (PSLUSD) utility easements shall comply with PSLUSD technical specifications, policies, and codes.
- Trees shall not be planted within ten (10) feet of any PSLUSD underground infrastructure.
- In locations where the perimeter landscape buffers must be designed to be located in utility easements due to site constraints, the trees, palm trees and shrubs shall be selected from the list in §153.04(B)(3)(d) and used in these areas to meet the landscape buffer requirements. Trees and palm trees may be planted not less than seven (7) feet from the underground PSLUSD infrastructure. The remainder of the landscape strip shall be planted with grass and ground cover.

Port St. Lucie Engineering Department Notes

- The landscape plans meet the City's sight distance and clear zone requirements from Section 158.204 of the Code for 10' requirements.

General Notes

- No plant substitutions can be made without the City of Port St. Lucie's approval.
- All required landscape improvements must be inspected and approved by the City of Port St. Lucie prior to the issuance of a Certificate of Occupancy.
- Any existing landscaping, sod, or irrigation damaged or destroyed during the construction shall be replaced prior to the final inspection.
- All prohibited, exotic and invasive species shall be removed from the entire site prior to issuance of certificate of occupancy.
- Planting adjacent to fire hydrants is to have a minimum clear radius of 7.5' as required by the NFPA Uniform Fire Code Florida Edition 18.3.4.1 Hydrants. All fire hydrants and fire check valves shall have a minimum of 7.5' from the front and sides with 4' from the rear to all landscape material per the Florida Fire Prevention Code.

Conceptual Landscape Plan

