

**NOTE:**

DESCRIPTION NOT  
VALID WITHOUT  
SKETCH.

THIS IS NOT A SURVEY

Exhibit "A"

**ABBREVIATION LEGEND**

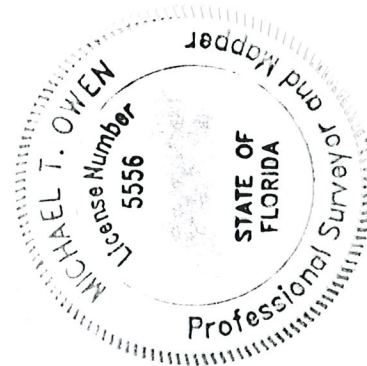
SQ FT SQUARE FEET  
CL CENTER LINE  
L LENGTH  
R RADIUS  
Δ DELTA

**NOTES:**

1. BEARINGS SHOWN HEREON ARE RELATIVE TO THE CENTER LINE OF SW BILTMORE STREET LABELED HEREON AS (BEARING BASIS), ALL OTHER BEARINGS ARE RELATIVE THERETO.
2. THIS SKETCH AND DESCRIPTION IS FOR THE EXCLUSIVE PURPOSE OF DESCRIBING THE PARCEL OR STRIP OF LAND SHOWN AND IS NOT A BOUNDARY SURVEY.

**DESCRIPTION:**

LOTS 20, 21 & 22, BLOCK 73, PORT ST. LUCIE SECTION TWENTY SEVEN, ACCORDING TO THE PLAT THEREOF, RECORDED IN PLAT BOOK 14, PAGES 5, 5A THROUGH 5I, OF THE PUBLIC RECORDS OF ST. LUCIE COUNTY, FLORIDA.



4-27-2022  
SIGNATURE DATE

MICHAEL T. OWEN  
PROFESSIONAL SURVEYOR & MAPPER  
FLORIDA REGISTRATION #5556

**SKETCH & DESCRIPTION OF:  
BILTMORE STREET PROPERTIES**

PORT SAINT LUCIE OFFICE  
10250 SW VILLAGE PARKWAY  
SUITE 201  
PORT SAINT LUCIE, FL 34987  
☎ 772-462-2455  
🌐 www.edc-inc.com



**ENGINEERS & SURVEYORS  
ENVIRONMENTAL**  
F.B.P.E. CERTIFICATE OF AUTHORIZATION 9935  
L.B. CERTIFICATE OF AUTHORIZATION 8098

PREPARED FOR:

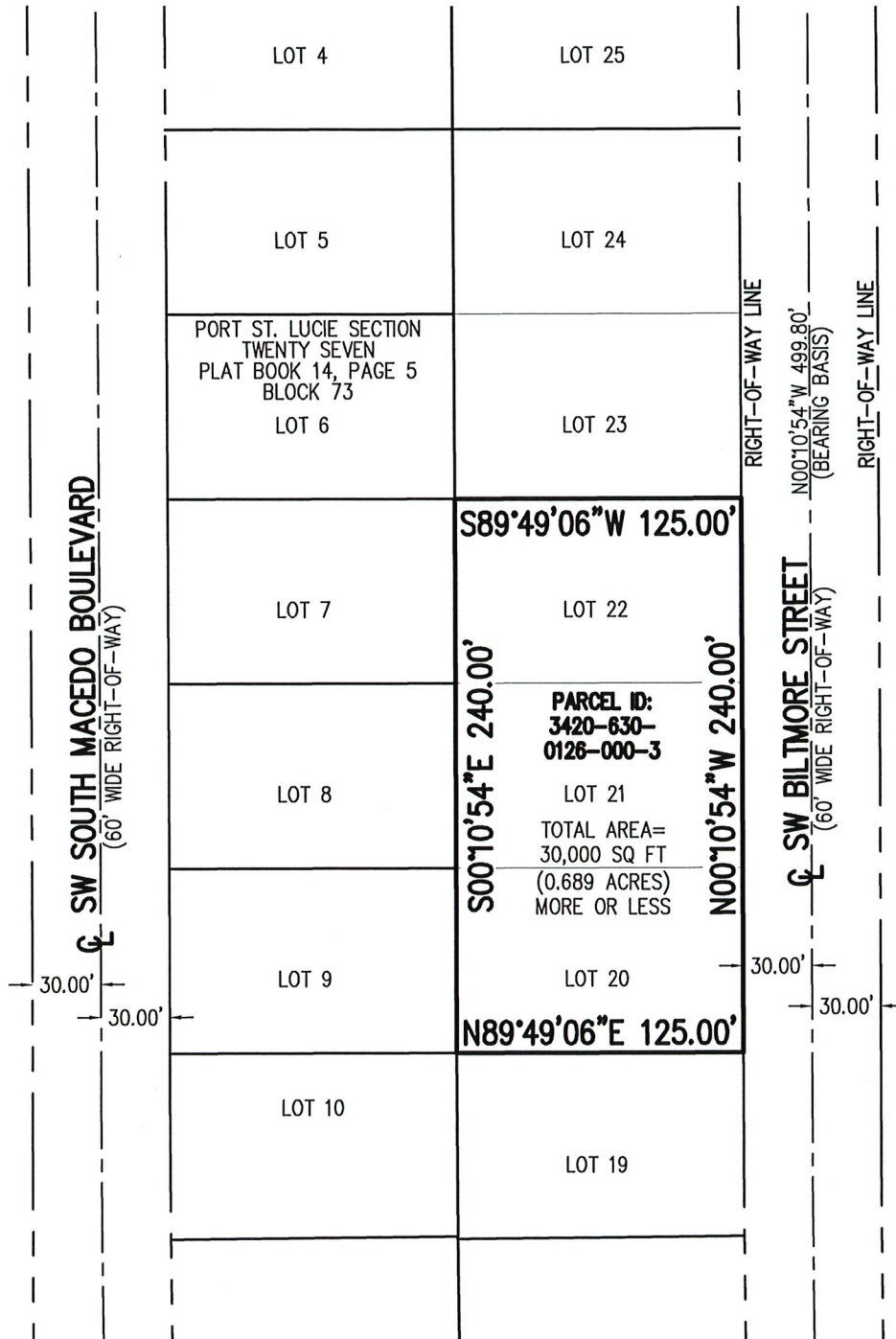
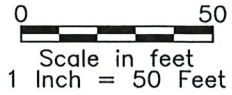
**ANDRADE INNOVATIONS, INC.**

REVISIONS

**NOTE:**

DESCRIPTION NOT  
VALID WITHOUT  
SKETCH.

**THIS IS NOT A SURVEY**



**SKETCH & DESCRIPTION OF:  
BILTMORE STREET PROPERTIES**

PREPARED FOR:

**ANDRADE INNOVATIONS, INC.**

PORT SAINT LUCIE OFFICE  
10250 SW VILLAGE PARKWAY  
SUITE 201  
PORT SAINT LUCIE, FL 34987  
☎ 772-462-2455  
🌐 www.edc-inc.com



**ENGINEERS & SURVEYORS  
ENVIRONMENTAL**  
F.B.P.E. CERTIFICATE OF AUTHORIZATION 9935  
L.B. CERTIFICATE OF AUTHORIZATION 8098

REVISIONS