

Final Publication Date	City
8/16/2023	Port St Lucie
Ad Number	State
GCI1093508	FL
Publication	ZIP Code
St. Lucie News Tribune	34984
Market	Your Name
Treasure Coast	Chan Conde
Delivery Method	Email Address
Both	CConde@gannett.com
Number of Affidavits Needed	
1	
Customer Email	
swalsh@cityofpsl.com	
Customer Name	
City Of Port St Lucie	
Customer Phone Number	
(772) 344-4390	
Customer Address	
121 SW Prt StLucie Blvd #A	
Port St Lucie, FL 34984	
Account Number (If Known)	
434020	
Name	
Sally Walsh	
Street	
121 SW Prt StLucie Blvd #A	

Treasure Coast Newspapers

PART OF THE USA TODAY NETWORK

St Lucie News Tribune
1801 U.S. 1, Vero Beach, FL 32960
AFFIDAVIT OF PUBLICATION

CITY OF PORT ST LUCIE
121 SW PORT ST LUCIE BLVD #A
PORT ST LUCIE, FL 34984
ATTN SALLY WALSH

STATE OF WISCONSIN
COUNTY OF BROWN

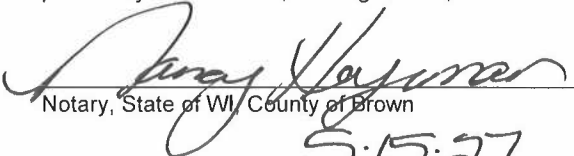
Before the undersigned authority personally appeared, who on oath says that he or she is the Legal Coordinator of the St Lucie News Tribune, published in St. Lucie County, Florida: that the attached copy of advertisement, being a PUBLIC NOTICE was published on publicly accessible, website of St. Lucie County, Florida, or in a newspaper by print in the issues of, on:

8/16/2023

Affiant further says that the website or newspaper complies with all legal requirements for publication in chapter 50, Florida Statutes.



Subscribed and sworn to before me, by the legal clerk, who is personally known to me, on August 16th, 2023:



Notary, State of WI, County of Brown

5.15.27

My commission expires

Publication Cost: \$803.25
Ad No: GCI1093508
Customer No: 434020
PO: PUBLIC NOTICE

of Affidavits 1

NANCY HEYRMAN
Notary Public
State of Wisconsin



"A City for All Ages"

NOTICE OF PUBLIC HEARING
NEW RESIDENTIAL STREET LIGHTING ASSESSMENT AREAS FOR FISCAL YEAR 2022/2023
CITY COUNCIL MEETING AUGUST 28, 2023, AT 6:30 P.M.
CITY HALL, 121 SW PORT ST. LUCIE BOULEVARD, PORT ST. LUCIE, FLORIDA

THE LOTS LISTED BELOW ARE IN AREAS BALLOTTED AND PASSED BY MAJORITY OF THE PROPERTY OWNERS RETURNED BALLOTS. THE CITY CONTemplates levying an assessment estimated at \$25.00 PER LOT. PAYMENT WILL BE ON A YEARLY BASIS AND COLLECTED BY THE ST. LUCIE COUNTY TAX COLLECTOR. THIS ASSESSMENT WILL BE INCLUDED IN YOUR NOVEMBER 2024 TAX BILL ON THE NON-AD VALOREM PORTION OF YOUR TAX BILL. A DESCRIPTION OF THE PROPERTIES SPECIFICALLY IDENTIFIED BY SECTION, BLOCK AND LOT AND A MAP SHOWING THE PROPOSED LOCATION OF THE STREET LIGHTING IS AS FOLLOWS:

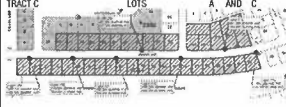
STREET LIGHTING ASSESSMENT AREA BOUNDARY #637
SW GRAY REAL AVENUE - SECTION 31
BLOCK 1718 LOTS 1 THRU 3
BLOCK 1718 LOT 8
BLOCK 1719 LOTS 6 THRU 13



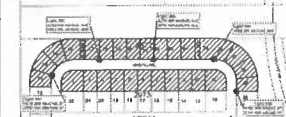
STREET LIGHTING ASSESSMENT AREA BOUNDARY #644
SW SOUTH WAKEFIELD CIRCLE - SECTION 34
BLOCK 2403 LOTS 1 THRU 19
BLOCK 2408 LOTS 13 THRU 27



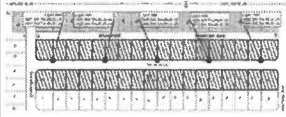
STREET LIGHTING ASSESSMENT AREA BOUNDARY #647
SW JEANNE AVENUE - SECTION 34
BLOCK 2332 LOTS 6 THRU 26
BLOCK 2343 LOTS 1 THRU 22
TRACT B LOTS A THRU C
TRACT C LOTS A AND C



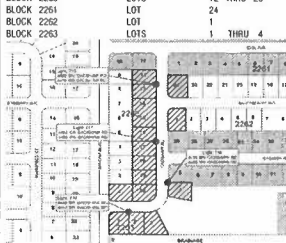
STREET LIGHTING ASSESSMENT AREA BOUNDARY #650
NW ADRIAN AVENUE - SECTION 43
BLOCK 2972 LOTS 13 THRU 29
BLOCK 2973 LOTS 1 THRU 11



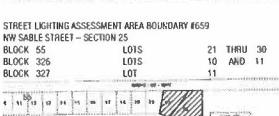
STREET LIGHTING ASSESSMENT AREA BOUNDARY #651
SW TAURUS LANE - SECTION 13
BLOCK 606 LOTS 19 THRU 36
BLOCK 609 LOTS 1 THRU 18



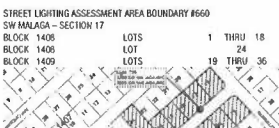
STREET LIGHTING ASSESSMENT AREA BOUNDARY #654
SW GADSDEN ROAD - SECTION 33
BLOCK 2260 LOT 1
BLOCK 2260 LOTS 12 THRU 20
BLOCK 2261 LOT 24
BLOCK 2262 LOT 1
BLOCK 2263 LOTS 1 THRU 4



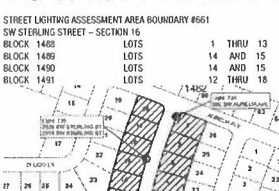
STREET LIGHTING ASSESSMENT AREA BOUNDARY #657
SE LORRAINE STREET - SECTION 29
BLOCK 1502 LOTS 23 THRU 45
BLOCK 1503 LOTS 1 THRU 22
BLOCK 1503 LOT 48



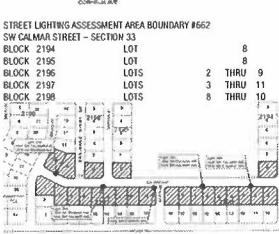
STREET LIGHTING ASSESSMENT AREA BOUNDARY #659
NW SABLE STREET - SECTION 25
BLOCK 55 LOTS 21 THRU 30
BLOCK 326 LOTS 10 AND 11
BLOCK 327 LOT 51



STREET LIGHTING ASSESSMENT AREA BOUNDARY #660
SW MALAGA - SECTION 17
BLOCK 1408 LOTS 1 THRU 18
BLOCK 1408 LOT 24
BLOCK 1409 LOTS 19 THRU 36



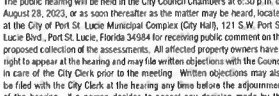
STREET LIGHTING ASSESSMENT AREA BOUNDARY #661
SW STERLING STREET - SECTION 16
BLOCK 1488 LOTS 1 THRU 13
BLOCK 1489 LOTS 14 AND 15
BLOCK 1490 LOTS 14 AND 15
BLOCK 1491 LOTS 12 THRU 18



STREET LIGHTING ASSESSMENT AREA BOUNDARY #662
SW CALMAR STREET - SECTION 33
BLOCK 2194 LOT 8
BLOCK 2196 LOT 8
BLOCK 2196 LOTS 2 THRU 9
BLOCK 2197 LOTS 3 THRU 11
BLOCK 2198 LOTS 8 THRU 10



STREET LIGHTING ASSESSMENT AREA BOUNDARY #649
SW WHITMORE DRIVE - SECTION 13
BLOCK 548 LOTS 2 THRU 65
BLOCK 647 LOT 18
BLOCK 647 LOTS 20 THRU 33
BLOCK 650 LOT 21
BLOCK 651 LOTS 1 AND 33
BLOCK 652 LOTS 1 AND 29
BLOCK 653 LOTS 1 AND 25
BLOCK 654 LOTS 1 AND 21
BLOCK 655 LOT 1
BLOCK 655 LOTS 23 THRU 25
BLOCK 656 LOTS 20 AND 21
BLOCK 657 LOTS 16 AND 17
BLOCK 658 LOTS 12 AND 13



The public hearing will be held in the City Council Chambers at 6:30 p.m. on August 28, 2023, or as soon thereafter as the matter may be heard, located at the City of Port St. Lucie Municipal Complex (City Hall), 121 S.W. Port St. Lucie Blvd., Port St. Lucie, Florida 34984 for receiving public comment on the proposed collection of the assessments. All affected property owners have a right to appear at the hearing and may file written objections with the Council in case of the City Clerk prior to the meeting. Written objections may also be filed with the City Clerk at the hearing any time before the adjournment of the hearing. If a person decides to appeal any decision made by the Council with respect to any matter considered at the hearing, such person will need a record of the proceedings and may need to arrange for a court reporter to ensure that a verbatim record is made. In accordance with the Americans with Disabilities Act, persons needing special accommodations or an interpreter to participate in this proceeding should contact the City Clerk's office at 772-871-5157, at least seven days prior to the date of the hearing. Copies of the assessment roll, showing the amount of the assessment to be imposed against each parcel of property, and the legal documentation relating to the assessment will be available for inspection in 2024 when the assessment roll is prepared. They can be reviewed in the office of the City Clerk, located on the Third Floor of City Hall, 121 S.W. Port St. Lucie Blvd., Port St. Lucie, Florida. The assessments will be collected on the non-ad valorem portion of the tax bill to be mailed in November 2024 by the St. Lucie County Tax Collector. Failure to pay the assessment will cause a tax certificate to be issued against the property, which may result in a loss of title to your property. If you have any questions, please contact City of Port St. Lucie City Attorney's Office at 772-871-5294, Monday through Friday between 8:00 a.m. and 5:00 p.m.

Sally Walsh, City Clerk
Publish: August 16, 2023

Biden focuses on jobs, not Trump

President touts economic gains on Wisconsin visit

Fatima Hussain and Josh Bok
ASSOCIATED PRESS

MILWAUKEE — On the heels of a fourth indictment for Donald Trump, President Joe Biden focused on manufacturing jobs in a speech at a Wisconsin factory — putting his ideas for growth

up against his Republican rivals in a bid to win over voters in a key state in next year's presidential election.

"It's really kind of basic: We just decided to invest in America again," Biden said Tuesday. "That's what it's all about."

His arrival in Milwaukee came on the eve of the one-year anniversary of the Inflation Reduction Act, a major piece of economic legislation he signed into law with great ceremony, but polls show

that most people know little about it or what it does. It also occurred a week before Republicans descend on Milwaukee for the party's first presidential debate. But as Biden spoke, much of the political world was focused on his predecessor, Trump, who was charged late Monday in Georgia on an alleged scheme to illegally overturn the results of the 2020 election.

Wisconsin is among the handful of critical states where Biden needs to persuade voters that his policies are having a positive impact on their lives by generating roughly \$500 billion in corporate investments in factories and other facilities. The president ignored Trump in his speech, but he made the economic case personal by directly challenging the state's Republican Sen. Ron Johnson, who was just reelected in 2022 and not up again until 2028.

Biden said that his ideas are in opposition to "the conservative Republican view, the so-called MAGA view, which is focused on corporate profits."

"But you know who believes that?" the president said. "Your significant Senator Ron Johnson. He believes outsourcing manufacturing jobs is a great thing."

Other Democrats on Tuesday openly compared Biden's trip to discuss policy with the legal challenges of Trump, the Republican front-runner trying to oust him in 2024.

"The contrast between Republicans and us is incredible," Senate Majority Leader Chuck Schumer, D-N.Y., told reporters Tuesday on a conference call.

Republican lawmakers are focused on criticizing Biden's economic leadership over inflation hitting a four-decade peak last summer, saying that many U.S. families are still struggling as a result of higher prices.

"Real wages are down and gas prices are up," House Speaker Kevin McCarthy, R-Calif., said on X, the social media platform formerly known as Twitter. "You are paying the price for failed leadership."

Biden toured Ingeteam, a clean energy manufacturer of onshore wind turbine generators in Milwaukee, and talked up provisions of the law to boost domestic manufacturing and clean energy, lower health care costs and crack



President Joe Biden's arrival in Milwaukee came on the eve of the one-year anniversary of the Inflation Reduction Act, a major piece of economic legislation he signed into law with great ceremony, but polls show that most people know little about it or what it does. ANDREW CABALLERO-REYNOLDS/AP VIA GETTY IMAGES

down on billionaires who avoid paying their taxes.


Ingeteam plans to hire 100 workers using Bipartisan Infrastructure Law money to start producing electric vehicle charging stations domestically, according to the White House.

Also timed to Biden's trip, multinational tech firm Siemens is set to announce that it will start manufacturing solar inverters in Wisconsin's Kenosha County, a move prompted by increased demand brought by the tax incentives from the IRA law.

Administration officials say the trip is aimed at recognizing the effects of the law, which passed Congress on party-line votes. According to the White House, in Wisconsin, private firms have committed more than \$3 billion in manufacturing and clean energy investments since Biden was sworn into office.

The president's stop in Wisconsin comes shortly before Republicans hold their first presidential primary debate in Milwaukee on Aug. 23. Former President Donald Trump — the leading Republican candidate in polls — has yet to say whether he will boycott or hold a competing event.

Democratic gains helped decide a critical state Supreme Court race this spring that moved Wisconsin's highest court under liberal control for the first time in 15 years.



NOTICE OF PUBLIC HEARING
NEW RESIDENTIAL STREET LIGHTING ASSESSMENT AREAS FOR FISCAL YEAR 2022/2023
CITY COUNCIL MEETING
AUGUST 28, 2023, AT 6:30 P.M.
CITY HALL, 121 SW PORT ST. LUCIE BOULEVARD, PORT ST. LUCIE, FLORIDA

THE LOTS LISTED BELOW ARE IN AREAS BALLOTTED AND PASSED BY MAJORITY OF THE PROPERTY OWNERS RETURNED BALLOTS. THE CITY COMPLETES LEAVING AN ASSESSMENT ESTIMATED AS PER PER LOT THROUGH MAIL OR BY A WORKER BASED AND COLLECTED BY THE ST. LUCIE COUNTY TAX COLLECTOR. THIS ASSESSMENT WILL BE INCLUDED IN YOUR NOVEMBER 2023 TAX BILL. CITY HALL HAS MAILED PORTIONS OF YOUR TAX BILL. A DESCRIPTION OF THE PROPERTIES SPECIALLY IDENTIFIED BY SECTION, BLOCK AND LOT AND MAP SHOWING THE PROPOSED LOCATION OF THE STREET LIGHTING AREAS FOLLOWS:


STREET LIGHTING ASSESSMENT AREA BOUNDARY #057 SE LORRAINE STREET - SECTION 20 BLOCK 1502 LOTS 22 THRU 43 BLOCK 1503 LOTS 1 THRU 22 BLOCK 1504 LOTS 43	STREET LIGHTING ASSESSMENT AREA BOUNDARY #059 NW GABLE STREET - SECTION 25 BLOCK 326 LOTS 10 AND 11 BLOCK 327 LOT 11
STREET LIGHTING ASSESSMENT AREA BOUNDARY #060 SW PALMATA - SECTION 17 BLOCK 1408 LOTS 1 THRU 18 BLOCK 1409 LOT 24 BLOCK 1409 LOTS 19 THRU 38	STREET LIGHTING ASSESSMENT AREA BOUNDARY #061 SW STERLING STREET - SECTION 18 BLOCK 1488 LOTS 1 THRU 13 BLOCK 1489 LOTS 14 AND 15 BLOCK 1490 LOTS 14 AND 15 BLOCK 1491 LOTS 12 THRU 18
STREET LIGHTING ASSESSMENT AREA BOUNDARY #062 SW CALMAR STREET - SECTION 33 BLOCK 2194 LOT 8 BLOCK 2195 LOT 8 BLOCK 2196 LOTS 2 THRU 8 BLOCK 2197 LOTS 2 THRU 11 BLOCK 2198 LOTS 8 THRU 13	STREET LIGHTING ASSESSMENT AREA BOUNDARY #064 SW WHIMMORE DRIVE - SECTION 13 BLOCK 548 LOTS 2 THRU 65 BLOCK 647 LOTS 15 BLOCK 647 LOTS 20 THRU 33 BLOCK 650 LOTS 29 BLOCK 651 LOTS 1 AND 33 BLOCK 652 LOTS 1 AND 29 BLOCK 653 LOTS 1 AND 25 BLOCK 654 LOTS 1 AND 21 BLOCK 655 LOTS 1 BLOCK 656 LOTS 23 THRU 25 BLOCK 658 LOTS 20 AND 21 BLOCK 657 LOTS 16 AND 17 BLOCK 658 LOTS 12 AND 13
STREET LIGHTING ASSESSMENT AREA BOUNDARY #064 SW CALMAR STREET - SECTION 33 BLOCK 2194 LOT 8 BLOCK 2195 LOT 8 BLOCK 2196 LOTS 2 THRU 8 BLOCK 2197 LOTS 2 THRU 11 BLOCK 2198 LOTS 8 THRU 13	STREET LIGHTING ASSESSMENT AREA BOUNDARY #064 SW WHIMMORE DRIVE - SECTION 13 BLOCK 548 LOTS 2 THRU 65 BLOCK 647 LOTS 15 BLOCK 647 LOTS 20 THRU 33 BLOCK 650 LOTS 29 BLOCK 651 LOTS 1 AND 33 BLOCK 652 LOTS 1 AND 29 BLOCK 653 LOTS 1 AND 25 BLOCK 654 LOTS 1 AND 21 BLOCK 655 LOTS 1 BLOCK 656 LOTS 23 THRU 25 BLOCK 658 LOTS 20 AND 21 BLOCK 657 LOTS 16 AND 17 BLOCK 658 LOTS 12 AND 13

The public hearing will be held in the City Council Chamber at 6:30 p.m. on August 28, 2023, at the City Hall located at the corner of Port St. Lucie Blvd. and Port St. Lucie Blvd. in the City of St. Lucie. Public comment on the proposed collection of the assessments. All affected property owners have a right to appear at the hearing and may file written objections with the Council in care of the City Clerk prior to the meeting. Written objections may also be filed with the City Clerk at the hearing any time before the adjournment of the hearing. If a person desires to appear at the hearing, such person will need a record of the proceedings and may need an agent for a court reporter to ensure that a verbatim record is made. In accordance with the Americans with Disabilities Act, persons needing special accommodations at an hearing or to participate in a hearing should contact the City Clerk's office at 772-871-5157, at least seven days prior to the date of the hearing. Copies of the assessment roll, showing the amount of the assessment to be imposed against each parcel of property, and the legal documentation relating to the assessment will be available for inspection in 2024 when the assessment roll is prepared. They can be reviewed in the office of the City Clerk, located on the Third Floor of City Hall, 121 SW Port St. Lucie Blvd., Port St. Lucie, Florida. This assessment roll will be collected on the next assessment date of the tax bill to be mailed in November 2024 by the St. Lucie County Tax Collector. Failure to pay the assessment will result in a lien against the property, which may result in a lien to be placed against your property. If you have any questions, please contact City of Port St. Lucie City Clerk's Office at 772-871-5294, Monday through Friday between 8:00 a.m. and 5:00 p.m.

Sally Wash, City Clerk
Publish August 16, 2023

Come Out of Your Shell

OUR TROPICAL TURTLE SET SHINES IN BRIGHT STERLING SILVER



ONLY \$99 FOR THE SET

Coast along in a serene state of mind with our Bali-style turtle jewelry set! The look includes drop earrings and an 18" rope-chain necklace with a 2" extender.

Shown larger for detail.

ROSS + SIMONS

Fine Jewelry | Fabulous Prices

ORDER TODAY!
To receive this special price and free shipping use offer code: **TURTLE20**
1.800.556.7376 or visit ross-simons.com/turtle
Item #988850