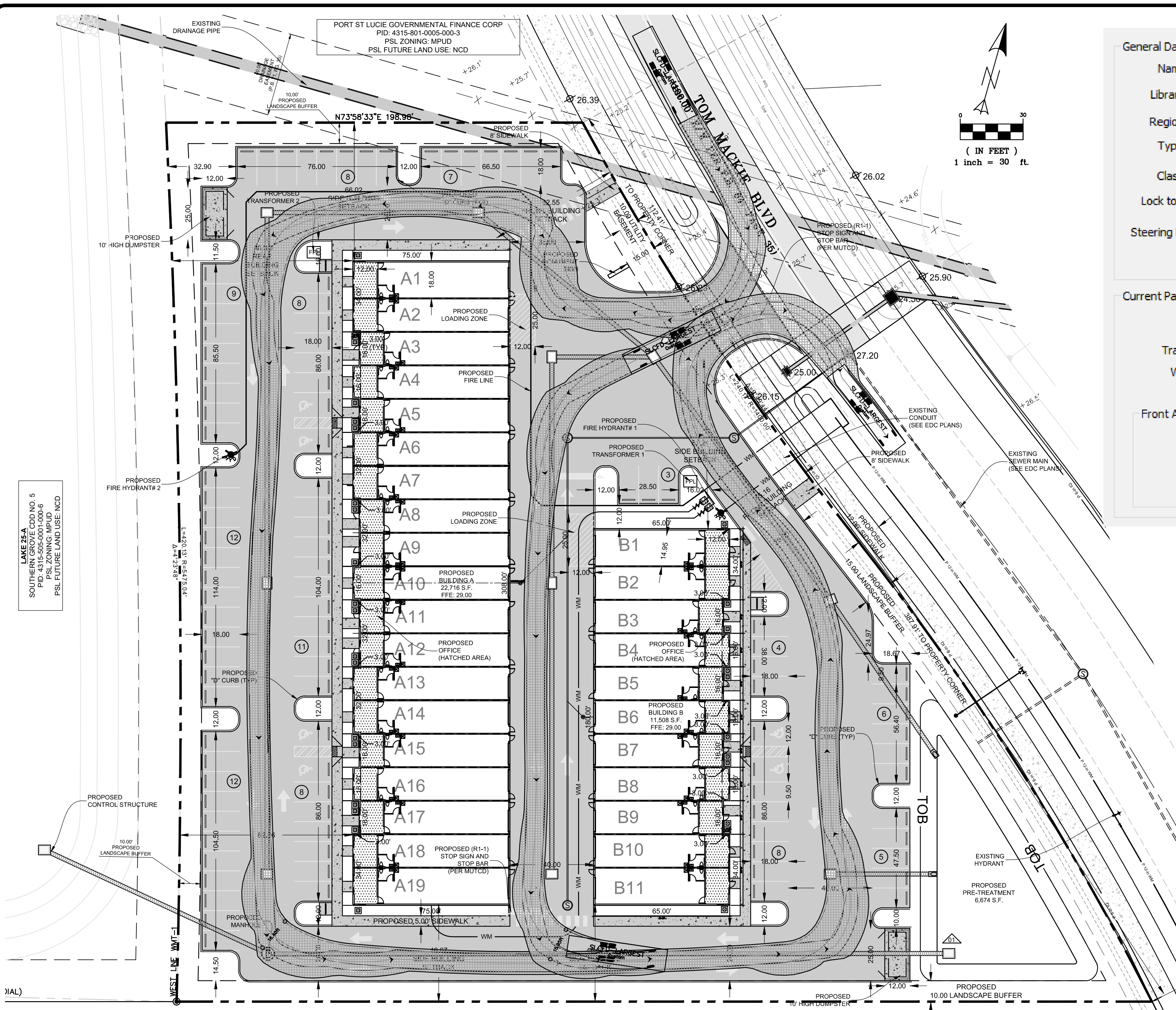
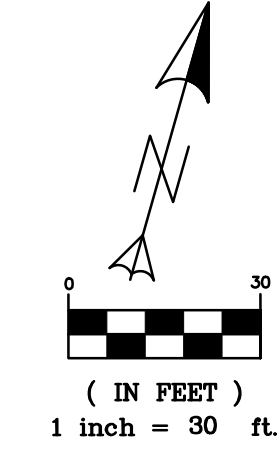


THIS DOCUMENT, TOGETHER WITH THE CONCEPTS AND DESIGNS PRESENTED HEREIN, AS AN INSTRUMENT OF SERVICE, IS INTENDED ONLY FOR THE SPECIFIC PURPOSE AND CLIENT FOR WHICH IT WAS PREPARED. REUSE OF AND IMPROPER RELIANCE ON THIS DOCUMENT WITHOUT WRITTEN AUTHORIZATION AND ADOPTION BY EDC, INC. SHALL BE WITHOUT LIABILITY TO EDC, INC.

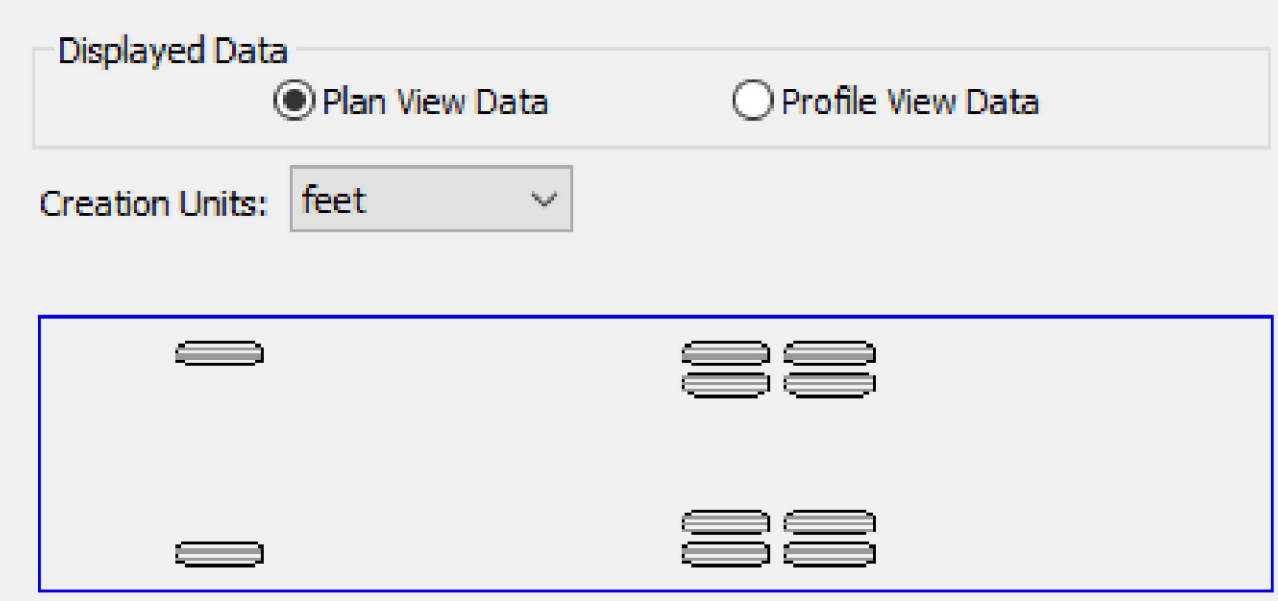


LAME 25A
SOUTH LANE, LOT NO. 5
PID: 4315-801-0005-000-6
PSL ZONING: MPUD
PSL FUTURE LAND USE: NCD

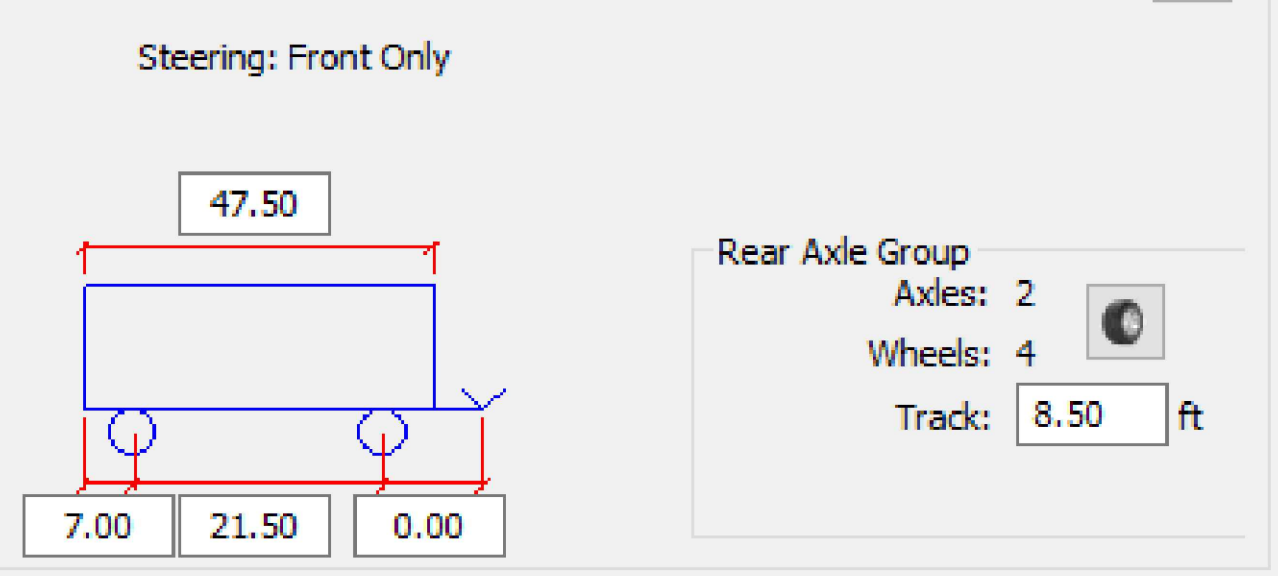
PORT ST LUCIE GOVERNMENTAL FINANCE CORP
PID: 4315-801-0005-000-3
PSL ZONING: MPUD
PSL FUTURE LAND USE: NCD



General Data
Name: SLCFD-LARGEST
Library: Custom
Region: North America
Type: Fire Truck 2
Class: Emergency - Fire - Pumper
Lock to Lock Time: 6.0 sec.
Steering Lock Angle: 41.5 deg.



Current Part Data
Tractor: Full
Width: 10.50
Front Axle Group
Axles: 1
Wheels: 2
Track: 8.50 ft



EDC ENGINEERS & SURVEYORS ENVIRONMENTAL
PORT SAINT LUCIE OFFICE
10250 SW VILLAGE PARKWAY - SUITE 201
PORT SAINT LUCIE, FL 34987
772-462-2455
www.edc-inc.com
F.B.P.E. CERTIFICATE OF AUTHORIZATION 9935
L.B. CERTIFICATE OF AUTHORIZATION 8098

DESIGNED BY	DRAWN BY	CHECKED BY	DATE
JUL	JUL	JUL	

FILE NAME	LAYOUT	SCALE	DATE
TRADITION BUSINESS CENTER	VEHICULAR CIRCULATION PLAN	AS SHOWN	

TRADITION BUSINESS CENTER
VEHICULAR CIRCULATION PLAN
SLCFD FIRE TRUCK
PORT SAINT LUCIE
FLORIDA

EDC ENGINEERS & SURVEYORS ENVIRONMENTAL
10250 SW VILLAGE PARKWAY - SUITE 201
PORT SAINT LUCIE, FL 34987
772-462-2455