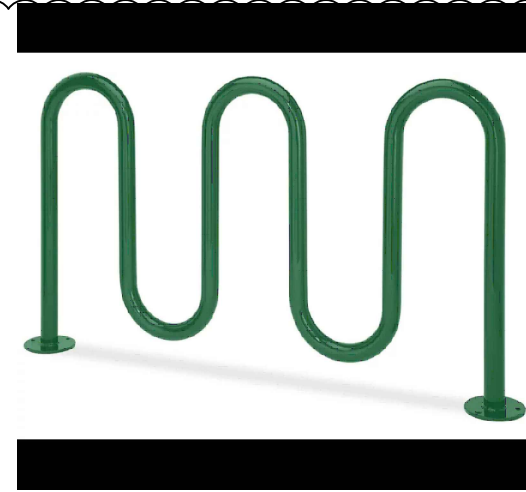
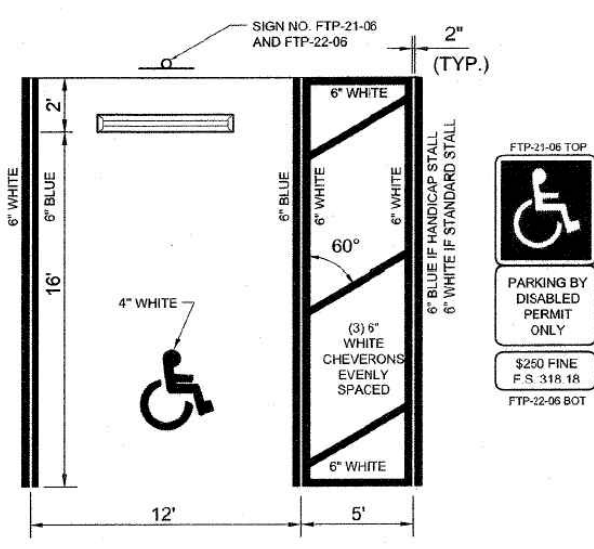


NOTES:

- HANDICAP STALL IS BASED FROM FDOT STANDARD INDEX.
- DIMENSIONS ARE TO THE CENTERLINE OF MARKINGS.
- BLUE PAVEMENT MARKINGS SHALL BE TINTED TO MATCH SHADE 14180 OF FEDERAL STANDARDS 595a.
- FTP-22-06 PANEL SHALL BE MOUNTED BELOW THE FTP-2106 SIGN.
- FOR DESIGN OF THE UNIVERSAL SYMBOL OF ACCESSIBILITY, REFERENCE FDOT STANDARD INDEX #17346, SHEET 12 OD 14.
- FOR DESIGN OF THE ASSOCIATED SIGNS, REFERENCE FDOT STANDARD INDEX #17355, SHEET 4 OF 11.



P.O. Box 22326
Lincoln, NE 68542

PF: 402/421-9464
FX: 402/421-9479

WEBSITE: www.sitescapesonline.com
E-MAIL: info@sitescapesonline.com

INCH TOLERANCES U.S.S.
FRACTION - 1/16"
ANG - 1°

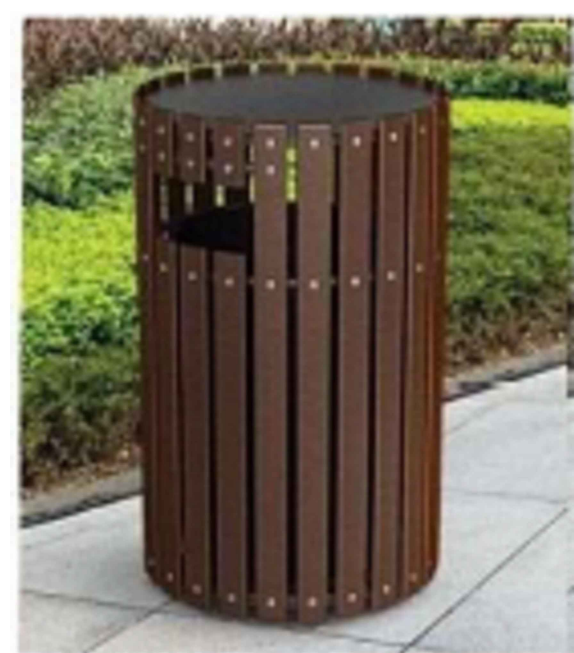
THE INFORMATION CONTAINED IN THIS DRAWING IS THE SOLE PROPERTY OF SITESCAPES, INC. ANY REPRODUCTION IN PART OR AS A WHOLE WITHOUT THE WRITTEN PERMISSION OF SITESCAPES, INC. IS PROHIBITED.

TITLE: **ECHO BIKE RACK**
PRODUCT NO: **EC2-09-SM**

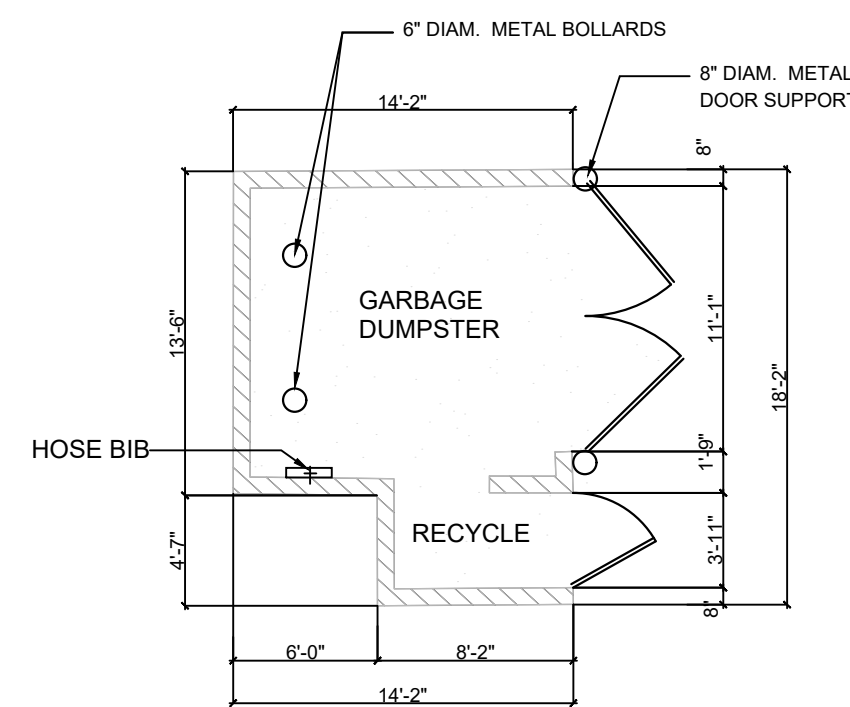
Available in powder coat and DuraCoat finishes

MATERIALS LIST
 (1) Tubing - \varnothing 2 3/8" x .154" Wall Steel Tubing
 (2) Surface Plate - \varnothing 7 1/2" x 1/4" Thick Steel Plate with Three \varnothing 9/16" Mounting Holes
 (3) Mounted with Six \varnothing 1/2" x 4-5" Stainless Steel Anchor Bolts (Customer Supplied)

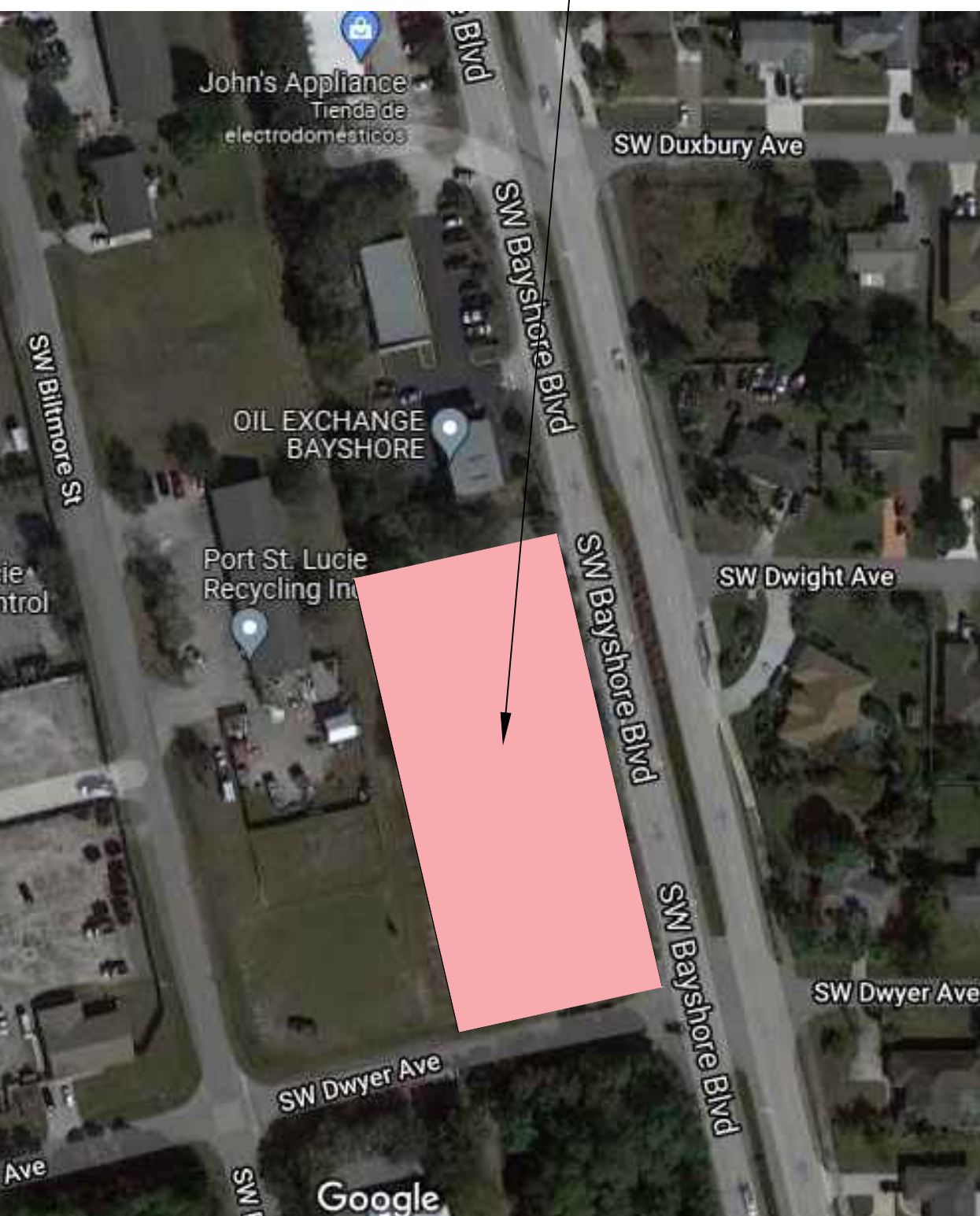
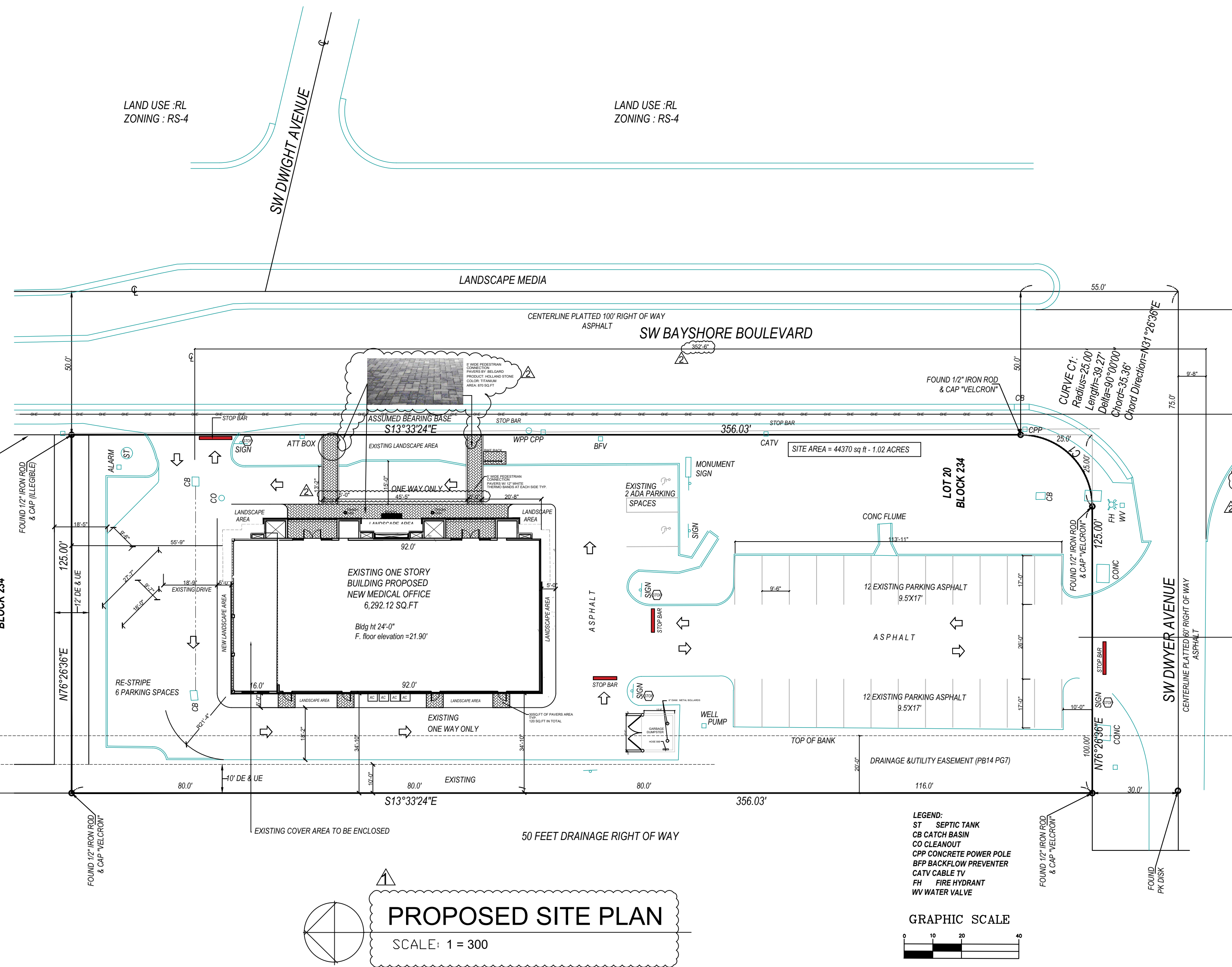
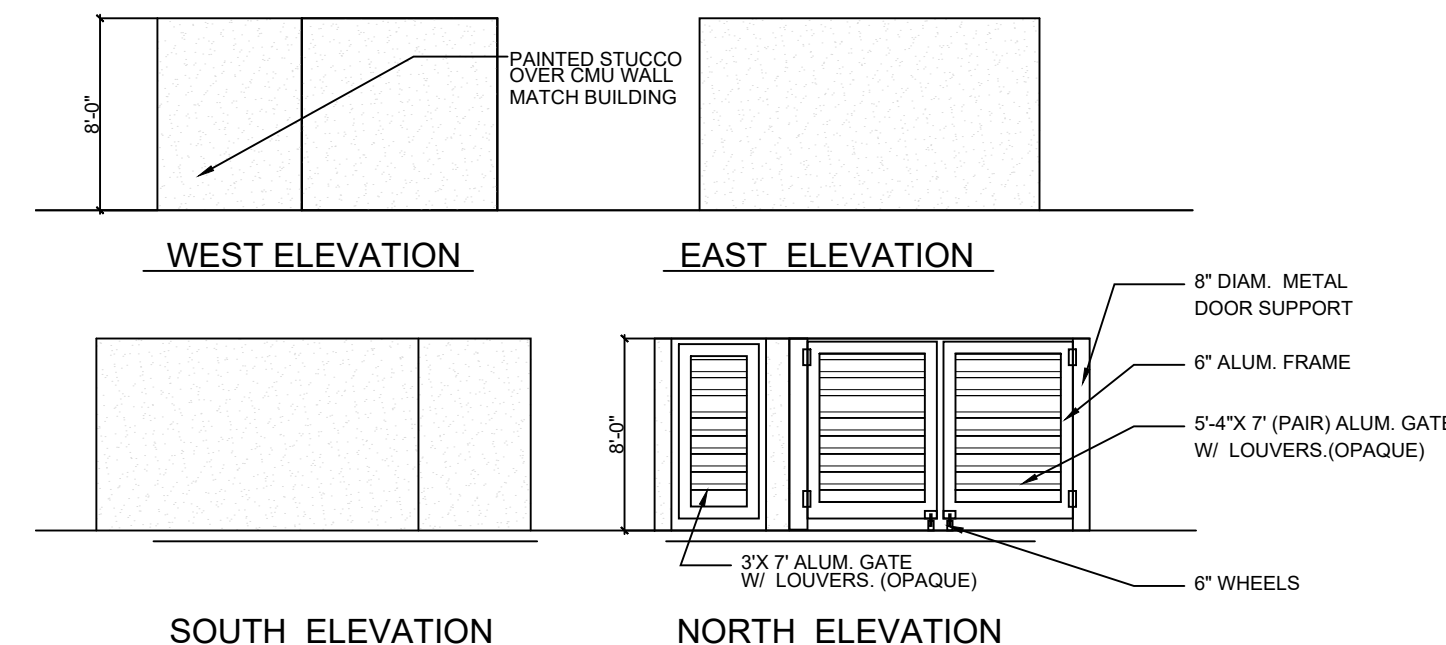
BIKE RACK DETAIL



PROPOSED TRASH CAN



DETAIL A DUMPSTER FLOOR PLAN



LOCATION MAP

LEGAL DESCRIPTION:
 LOTS 16, 17, 18 & 19, BLOCK 234, PORT ST. LUCIE SECTION TWENTY EIGHT, AS RECORDED IN PLAT BOOK 14 PAGE 7, (7" x 1" THROUGH 10") PUBLIC RECORD OF ST LUCIE COUNTY, FLORIDA.

TABULAR DATA:

PROPERTY ADDRESS: 1170 S.W. BAYSHORE BOULEVARD PORT ST. LUCIE, FLORIDA

PROJECT NAME: SOMA MEDICAL CENTER P.A. ADULTS & PA #4 PEDIATRICS

OWNER: SOMA INVESTORS LLC.

LOCATION: AVENUE 1170 BAYSHORE BOULEVARD & DWYER AVENUE

LAND USE: (C.G.) GENERAL COMMERCIAL

ZONING: (C.G.) GENERAL COMMERCIAL

UTILITIES
 ELECTRIC: FLORIDA POWER & LIGHT
 WATER: PSL USD
 SEWER: PSL USD

AREA TABULATION	S.F.	%	A.C.
TOTAL AREA:	44305.32	100%	1.01
PROPOSED BUILDING:	6,292.12	14.20%	0.14
TOTAL IMPERVIOUS:	21352.14	48.19%	0.49
TOTAL PERVIOUS:	16661.06	37.60%	0.38

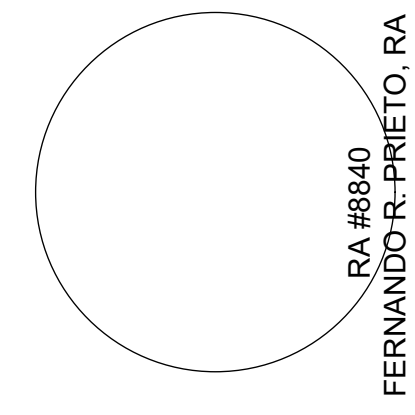
PARKING CALCULATIONS:
 REQUIRED 1/200 SQ.FT. = 31 SPACES
 PROVIDED : 32 SPACES INCLUDING 2 HANDICAP SPACES.

Revisions:
 5-18-22 P&Z COMMENTS
 6-2-22 P&Z COMMENTS

**SOMA MEDICAL CENTER
 PA ADULTS & PA #4 PEDIATRICS**
 1170 SW BAYSHORE BOULEVARD
 PORT ST LUCIE, FL 34983



team architecture
 incorporated
 2328 10th Avenue North, Suite 200
 Lake Worth, Florida 33461
 (561) 855-2688



Design By: AC
 Revised By: FRP
 Draw By: GS
 Date: DECEMBER, 2021

Sheet Number
SP-1

P96-004

THIS DRAWING IS THE PROPERTY OF TEAM ARCHITECTURE INCORPORATED AND IS COPYRIGHTED. THERE SHALL BE NO USE OR COPYING OF THIS DOCUMENT WITHOUT AUTHORIZATION FROM TEAM ARCHITECTURE INCORPORATED.