

General Landscape Notes

- At least 50% of all required trees shall be of a native species.
- All plant material to be Florida No. 1 or better.
- All landscape & sod areas to be irrigated by an automated system that provides 100% coverage with 100% overlap with a minimum d.u. of .70.
- All landscaping at intersection and corners complies with Section 158.204 of the Port St Lucie Code of Ordinances to provide a clear sight zone between 2' - 6' above the final road crown elevation. All hedges and shrubs within in the 25' sight triangle will be maintained at a height no higher than 2' above the crown elevation of the road. In addition, the foliage line any tree within the 25' sight triangle will maintained at a height of no less than 6' above the road crown.

PSLUSD Notes for Landscape Plans

- All new landscaping within utility easements and within ten (10) feet of underground utility infrastructure shall comply with PSLUSD technical specifications, policies, and codes.
- No landscaping other than sod grasses may be planted within a 5' radius maintenance area of any utility appurtenances such as water meters, backflow devices, fire hydrants, sanitary sewer cleanouts, and manholes, air release valves, etc. Trees shall not be planted within ten (10) feet of any underground infrastructure.
- No landscaping shall be planted in such a manner as to adversely affect utility installation, operation and maintenance.
- No landscaping shall be planted in a manner that would adversely affect utility easements. Landscaping shall be in compliance with Chapter 154 of the City of Port St. Lucie Code of Ordinances, PSLUSD technical specifications and policies.
- All landscaping within City utility easements shall comply with PSLUSD technical specifications, policies, and codes.
- All landscaping shall mee the latest PSLUSD Landscape Policy and shall not be placed in a manner that would create conflicts with the intended operation and maintenance of any existing utility.
- Trees shall not be planted within ten (10) feet of any PSLUSD underground infrastructure.
- No landscaping other than sod grasses shall be located within 5' of a PSLUSD appurtenance such as water meter assembly, backflow device, fire hydrant or sewer cleanout, etc.

SOUTHERN GROVE PLAT 13
WATER MANAGEMENT
TRACT #1
VACANT
FUTURE LAND USE: PSL NCD
ZONING: SLG-AG-5

BENCHMARK #1
ELEV. 29.33
N.A.V.D. '88

EX. CURB INLET
RIM=28.37
SW INV. +23.52 (18" ROP)
BOTTOM=21.67'

Required Tree Credits:

	Native%	# of Species	Flowering%	Drought Tolerant%	Palm%
Site Perimeter: (1285' / 25)	52				
Building Foundation Perimeter: (320' / 25)	13				
Parking Lot Terminal Islands:	4				
Total:	69	35	5	25%=17	50%=35
					50%=30 (Max)

Provided Tree Credits:

	Native	# of Species	Flowering	Drought Tolerant	Palm
Total:	69	45	7	18	45
					23

Required Shrub Credits:

	Native%	Drought Tolerant%
Site Perimeter: (1285' / 2)	643	25%=161
Building(s) Foundation Perimeter: (320' / 2)	160	25%=40
Total:	803	201
		402

Provided Shrub Credits:

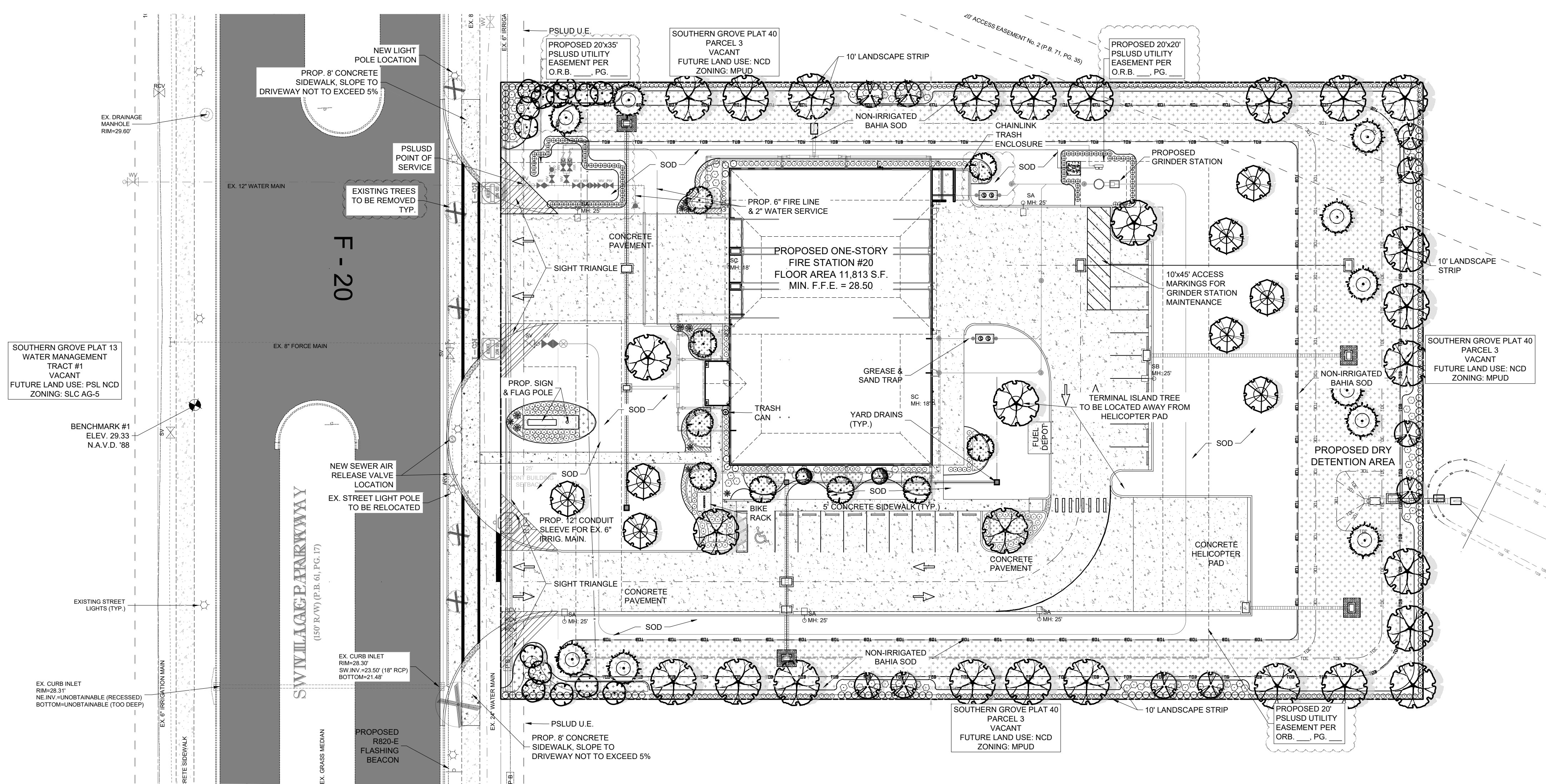
	Native%	Drought Tolerant%
Total:	880	679
		679

Required Groundcover Credits:

	Native%	Flower%	Drought Tolerant%
Building Foundation & Perimeters: (320'x5'x.25)	400 SF	25%=100 SF	10%=40 SF
			50%=200 SF

Provided Groundcover Credits:

	Native	Flowering	Drought Tolerant
Total:	1700 SF	1500 SF	1500 SF
			1500 SF



Plant Schedule:

TREES	QTY	BOTANICAL NAME	COMMON NAME	CONTAINER	HEIGHT	WIDTH	NOTES	NATIVE	CALIPER
	2	Elaeocarpus decipiens	Japanese Blueberry Tree	65G	14' HT	6' W	3' CT, STD, SP	Non-native	2.5" Caliper
	10	Lagerstroemia indica 'Muskogee'	Muskogee Crape Myrtle	65G	14' HT	6' SPR	ML, SP	Non-native	2.5" Caliper
	8	Lagerstroemia speciosa	Queen's Crape Myrtle	100G	14' HT	8' SPR	SP, 5' CT	Non-native	4" Caliper
	28	Quercus virginiana	Southern Live Oak	100G	16' HT	10' W	F, SP, 6' CT	Native	4" Caliper
	10	Taxodium distichum	Bald Cypress	B&B	16' HT	10' W	SP	Native	4" Caliper
PALM TREES	QTY	BOTANICAL NAME	COMMON NAME	CONTAINER	HEIGHT	WIDTH	NOTES	NATIVE	CALIPER
	14	Sabal palmetto	Sabal Palm	FG	16'-24' CT		SLK, CU, SP	Native	
	9	Wodyetia bifurcata	Single Foxtail Palm	FG	8' GW, 12' CT		SGL, FH, SP	Non-native	
SHRUBS	QTY	BOTANICAL NAME	COMMON NAME	CONTAINER	HEIGHT	WIDTH	NOTES	NATIVE	
	11	Alcantarea imperialis	Imperial Bromeliad	7G	24" OA	18" W	F	Non-native	
	452	Chrysobalanus icaco 'Red Tip'	Red Tip Cocoplum	7G	24" HT	24" W	F, SP	Native	
	129	Conocarpus erectus sericeus	Silver Buttonwood	7G	24" HT	18" W	F	Native	
	104	Hamelia patens 'Compacta'	Dwarf Firebush	3G	24" HT	18" W	F	Non-native	
	98	Myrcianthes fragrans	Simpson's Stopper	3G	24" HT	24" W	F	Native	
	97	Rhaphiolepis indica 'Alba'	Dwarf White Indian Hawthorn	3G	24" HT	18" W	F	Non-native	
GROUND COVERS	QTY	BOTANICAL NAME	COMMON NAME	CONTAINER	HEIGHT	WIDTH	NOTES	NATIVE	
	101	Carissa macrocarpa 'Emerald Blanket'	Emerald Blanket Carissa	3G	18" HT	18" W	F	Non-native	24" o.c.
	210	Muhlenbergia capillaris	Pink Muhly Grass	1G	18" HT	12" W	F	Native	36" o.c.
	TBD	Paspalum notatum	Bahia Grass	SOD			Free of Weeds and Pests		
	TBD	Stenotaphrum secundatum 'Floratum'	Floratum St. Augustine Sod	SOD			Free of Weeds and Pests		

EXISTING TREES TO BE REMOVED	QTY	BOTANICAL NAME	COMMON NAME	CONTAINER	HEIGHT	WIDTH	NATIVE	CALIPER
	5	Elaeocarpus decipiens	Japanese Blueberry Tree	Existing To Be Removed	12' HT	8' W	Non-native	6" DBH
	1	Quercus virginiana	Live Oak	Existing To Be Removed	18' HT	15' W	Native	8" DBH

Project Team
Landscape Architect:
LAS LANDSCAPE ARCHITECTURAL SERVICES, LLC
Brandon White | Owner
772-834-1357 | brandon@las-fl.com
Paul Goulas | Owner
772-631-8400 | paul@las-fl.com
3708 SE Jay Haven Street
Port St. Lucie, FL 34983
Civil Engineer:
EDC ENVIRONMENTAL DESIGN CONSULTANTS, INC.
10250 SW VILLAGE PARKWAY
SUITE 201
PORT SAINT LUCIE, FL 34987
772-462-2455

ST. LUCIE COUNTY FIRE STATION #20
S.W. VILLAGE PARKWAY
Landscape Plan
Florida
Port Saint Lucie

Revisions		
Date	Init.	Description
7.12.23	PG	Concept Landscape Plan
9.12.23	PG	Revised per Comments

REGISTERED LANDSCAPE ARCHITECT
PAUL A. GOULAS
LA 6668807
STATE OF FLORIDA
PAUL GOULAS, RLA
FLORIDA REG. # LA6668807

Drawn By: BW
Checked By: PG
Scale:
NORTH
SCALE: 1" = 30'
0 15' 30' 60'
811
It's fast. It's free. It's the law.
Know what's below. Call before you dig.
www.call811.com
LS-1

PSL PROJECT NO. P23-117
PSLUSD FILE NO. 5002-20