

1 FLOOR PLAN
 1/8" = 1'-0"
 4' 0' 5'

GENERAL NOTES

1. TYPICAL DIMENSIONS ARE TAKEN AT CENTERLINE OF STUDS AND AT FACE OF MASONRY.
2. DIMENSIONS AT PILASTERS ARE TAKEN AT FACE OF FINISH.
3. SEE A3.1 FOR DOOR & GLAZING SCHEDULES.

LIFE SAFETY PLAN CALCULATIONS

FUTURE TENANT UNIT #101	
"RESTAURANT" (ASSEMBLY OCCUPANCY)	
2,438 S.F. (GROSS) / 15 S.F. PER PERSON = 162.5 OCCUPANTS	
TOTAL OCCUPANTS:	163
EGRESS WIDTH PER OCCUPANT:	.2" (FBC TABLE 1005.1)
EGRESS WIDTH REQUIRED:	163 x .2" = 32.6"
EGRESS WIDTH PROVIDED:	102"
MAXIMUM ALLOWABLE TRAVEL DISTANCE:	250'-0" (FBC TABLE 1017.2)
MAXIMUM ACTUAL TRAVEL DISTANCE:	41'-1"
FUTURE TENANT UNIT #102 CALCULATED OCCUPANT LOAD:	
"RETAIL" (MERCANTILE "GROUP M")	
2,438 S.F. (GROSS) / 30 S.F. PER PERSON = 81.26 OCCUPANTS	
TOTAL OCCUPANTS:	82
EGRESS WIDTH PER OCCUPANT:	.2" (FBC TABLE 1005.1)
EGRESS WIDTH REQUIRED:	82 x .2" = 16.4"
EGRESS WIDTH PROVIDED:	102"
MAXIMUM ALLOWABLE TRAVEL DISTANCE:	250'-0" (FBC TABLE 1017.2)
MAXIMUM ACTUAL TRAVEL DISTANCE:	40'-5"
FUTURE TENANT UNIT #103 CALCULATED OCCUPANT LOAD:	
"RETAIL" (MERCANTILE "GROUP M")	
1,925 S.F. (GROSS) / 30 S.F. PER PERSON = 64.17 OCCUPANTS	
TOTAL OCCUPANTS:	65
EGRESS WIDTH PER OCCUPANT:	.2" (FBC TABLE 1005.1)
EGRESS WIDTH REQUIRED:	65 x .2" = 13.0"
EGRESS WIDTH PROVIDED:	68"
MAXIMUM ALLOWABLE TRAVEL DISTANCE:	250'-0" (FBC TABLE 1017.2)
MAXIMUM ACTUAL TRAVEL DISTANCE:	32'-0"
FUTURE TENANT UNIT #104 CALCULATED OCCUPANT LOAD:	
"RETAIL" (MERCANTILE "GROUP M")	
1,400 S.F. (GROSS) / 30 S.F. PER PERSON = 46.66 OCCUPANTS	
TOTAL OCCUPANTS:	47
EGRESS WIDTH PER OCCUPANT:	.2" (FBC TABLE 1005.1)
EGRESS WIDTH REQUIRED:	47 x .2" = 9.4"
EGRESS WIDTH PROVIDED:	68"
MAXIMUM ALLOWABLE TRAVEL DISTANCE:	250'-0" (FBC TABLE 1017.2)
MAXIMUM ACTUAL TRAVEL DISTANCE:	34'-0"
FUTURE TENANT UNIT #105 CALCULATED OCCUPANT LOAD:	
"RETAIL" (MERCANTILE "GROUP M")	
1,400 S.F. (GROSS) / 30 S.F. PER PERSON = 46.66 OCCUPANTS	
TOTAL OCCUPANTS:	47
EGRESS WIDTH PER OCCUPANT:	.2" (FBC TABLE 1005.1)
EGRESS WIDTH REQUIRED:	47 x .2" = 9.4"
EGRESS WIDTH PROVIDED:	68"
MAXIMUM ALLOWABLE TRAVEL DISTANCE:	250'-0" (FBC TABLE 1017.2)
MAXIMUM ACTUAL TRAVEL DISTANCE:	34'-2"
FUTURE TENANT UNIT #106 CALCULATED OCCUPANT LOAD:	
"RETAIL" (MERCANTILE "GROUP M")	
2,054 S.F. (GROSS) / 30 S.F. PER PERSON = 68.46 OCCUPANTS	
TOTAL OCCUPANTS:	69
EGRESS WIDTH PER OCCUPANT:	.2" (FBC TABLE 1005.1)
EGRESS WIDTH REQUIRED:	69 x .2" = 13.8"
EGRESS WIDTH PROVIDED:	136"
MAXIMUM ALLOWABLE TRAVEL DISTANCE:	250'-0" (FBC TABLE 1017.2)
MAXIMUM ACTUAL TRAVEL DISTANCE:	36'-11"

LIFE SAFETY NOTES

1. PORTABLE FIRE EXTINGUISHERS SHALL BE IN COMPLIANCE WITH NFPA 7TH EDITION INCLUDING NFPA 1 & 101, 2018 EDITION. THERE SHALL BE A MINIMUM OF ONE EXTINGUISHER PER EVERY 2,500 SQ. FT. MINIMUM SIZE 2A10BC TYPE.
2. EMERGENCY LIGHTING SHALL MEET REQUIREMENTS OF THE NFPA 7TH EDITION.
3. EXIT LIGHTING SHALL MEET REQUIREMENTS OF THE NFPA 7TH EDITION.

MALTESE CROSS

OWNER SHALL PROVIDE, AT EACH MAIN ENTRY, THIS APPROVED FIRE SYMBOL, THE MALTESE CROSS, PRIOR TO RECEIVING A CERTIFICATE OF OCCUPANCY.

PLACEMENT: 24" TO THE LEFT OF EACH MAIN ENTRY.
 4'-0" A.F.F., MIN. TO BOTTOM OF SYMBOL.
 6'-0" A.F.F., MAX. TO TOP OF SYMBOL.

SIZE: 8"x8" MIN.

COLOR: A BRIGHT RED REFLECTIVE COLOR.

MOUNTING: SYMBOL TO BE PERMANENTLY ATTACHED TO THE FACE OF THE STRUCTURE ON A CONTRASTING BACKGROUND OR MOUNTED ON A CONTRASTING BASE MATERIAL WHICH IS THEN PERMANENTLY ATTACHED TO THE FACE OF THE STRUCTURE.

69A-60.00B: NOTICE REQUIRED FOR STRUCTURES WITH LIGHT-FRAME TRUSS TYPE CONSTRUCTION. THE SYMBOL SHALL WARN PERSONS CONDUCTING FIRE CONTROL AND OTHER EMERGENCY OPERATIONS OF THE EXISTENCE OF THE LIGHT FRAME TYPE CONSTRUCTION IN THE STRUCTURE.

1-333

THIS DRAWING AND ALL INFORMATION CONTAINED HEREIN IS THE EXCLUSIVE PROPERTY OF FISHER AND ASSOCIATES, LLC. NO PART OF THIS DRAWING IS TO BE REPRODUCED OR TRANSMITTED IN ANY FORM OR BY ANY MEANS, ELECTRONIC OR MECHANICAL, INCLUDING PHOTOCOPYING, RECORDING, OR BY ANY INFORMATION STORAGE AND RETRIEVAL SYSTEM, WITHOUT THE WRITTEN PERMISSION OF FISHER AND ASSOCIATES, LLC. THIS DRAWING IS FOR GENERAL USE ON THIS PROJECT ONLY. ALL RIGHTS ARE RESERVED.

TO THE BEST OF MY KNOWLEDGE, THE SPECIFICATIONS AND PLANS SHOWN HEREIN COMPLY WITH THE APPLICABLE MINIMUM BUILDING CODES IN EFFECT AT THE TIME.

FISHER AND ASSOCIATES, LLC.
 ARCHITECTS
 PLANNERS
 INTERIOR DESIGNERS
 286 BELLEFLORE CLEARWATER, FL 33704 (727) 448-4488
 AA2600708

FLOOR PLAN
RIVERLAND TOWN CENTER
RETAIL B
MARSHALL PKWY. & COMMUNITY BLVD.
PORT ST. LUCIE, FL

RELEASED FOR:

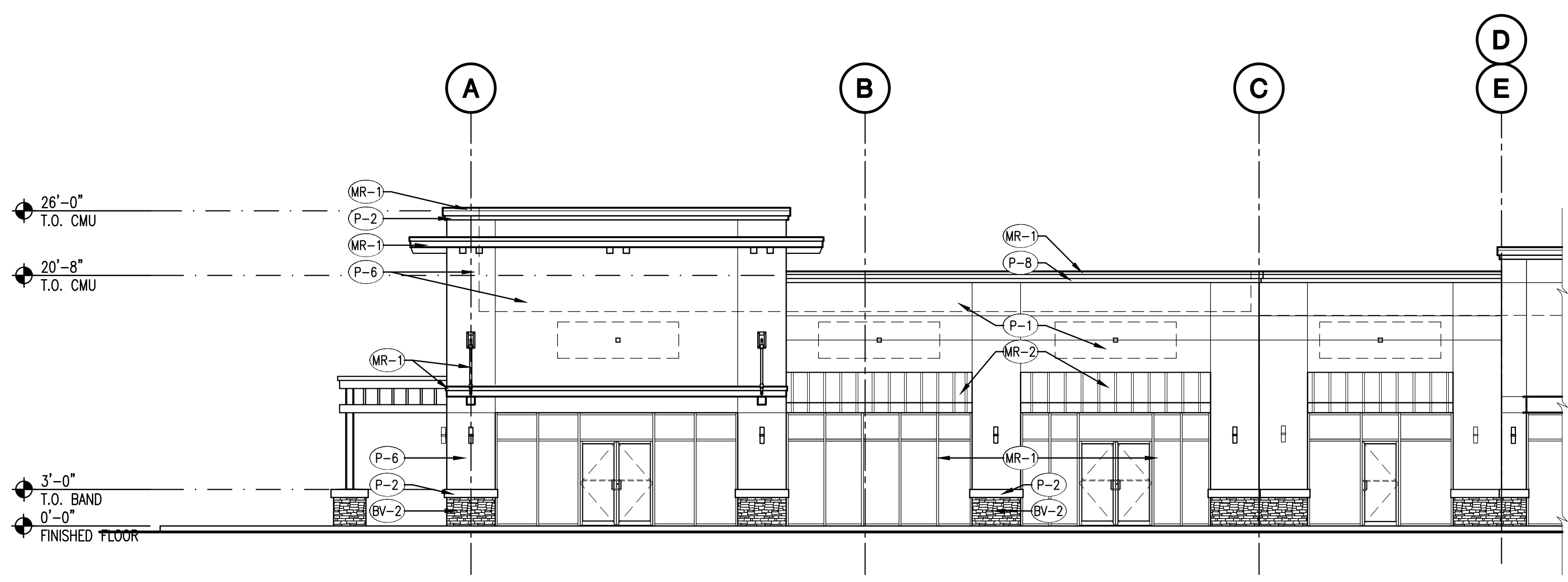
BID	
PERMIT	
CONSTR.	

REVISIONS:

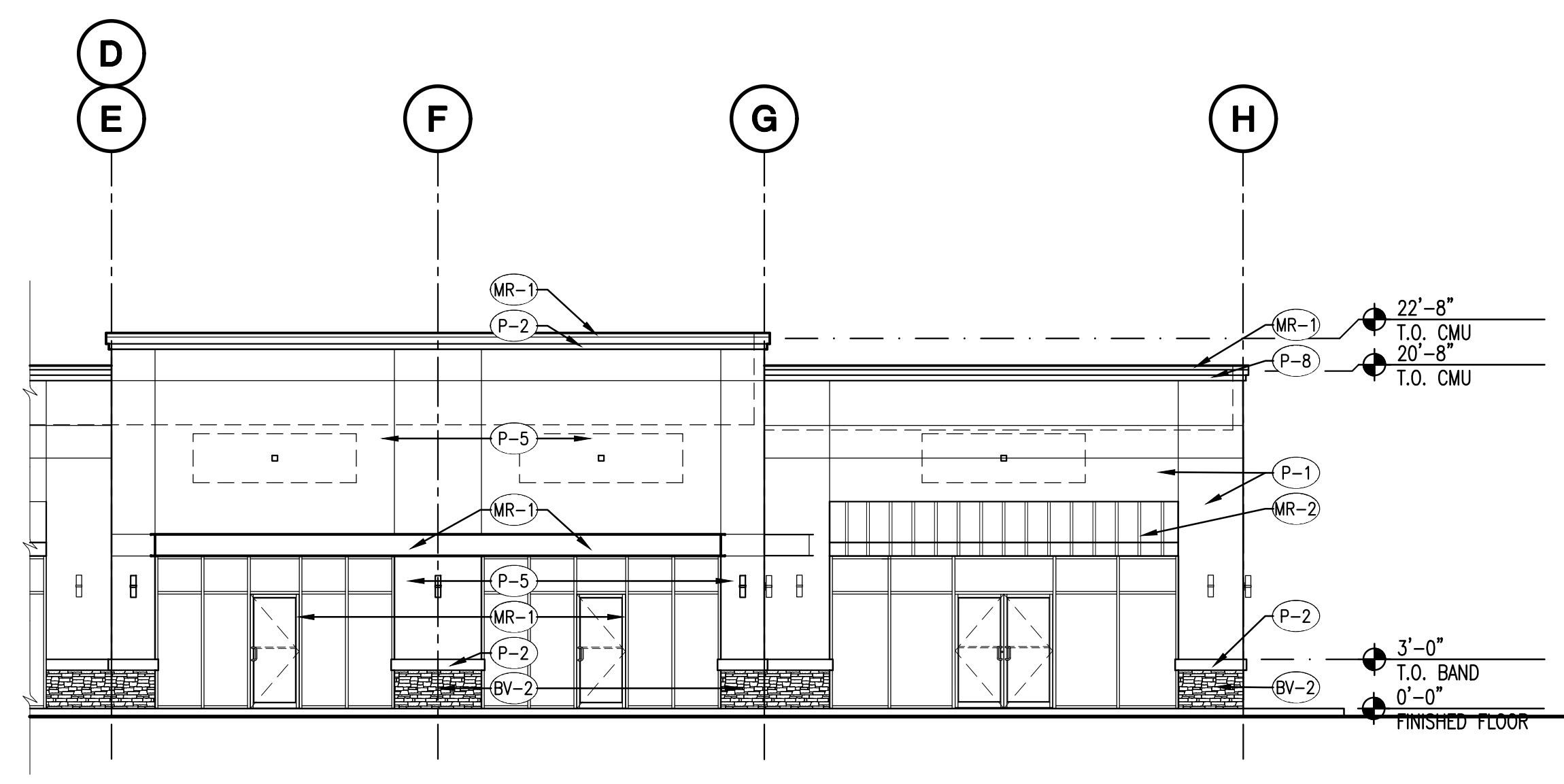
STATE OF FLORIDA
 WILLIAM JOE FISHER, JR.
 REGISTERED ARCHITECT
 AR 0010829

A2.1
 Issue Date: 11-08-22
 Project No.: 222035

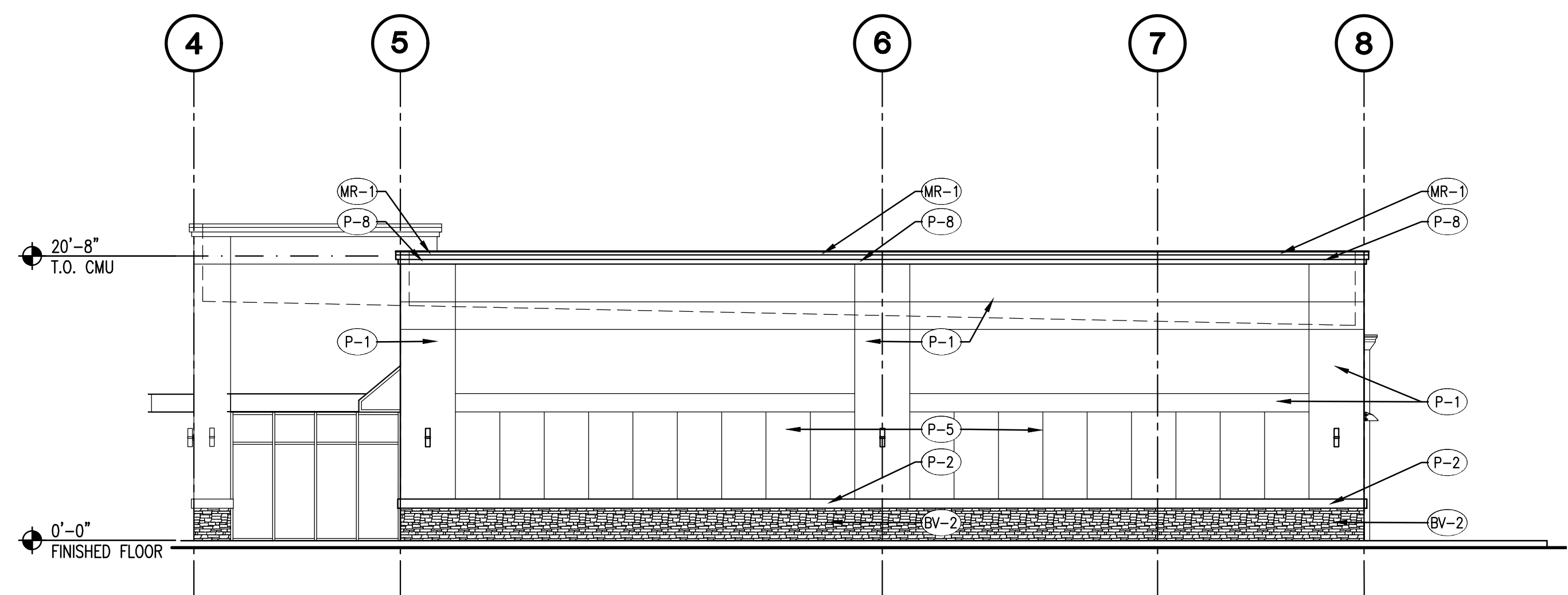
DATE PLOTTED: 2/10/2023 4:01 PM BY: John DORRIS (222035) PLOTTER: HP DesignJet T1300PS (222035) PLOTTER: HP DesignJet T1300PS (222035) PLOTTER: HP DesignJet T1300PS (222035)



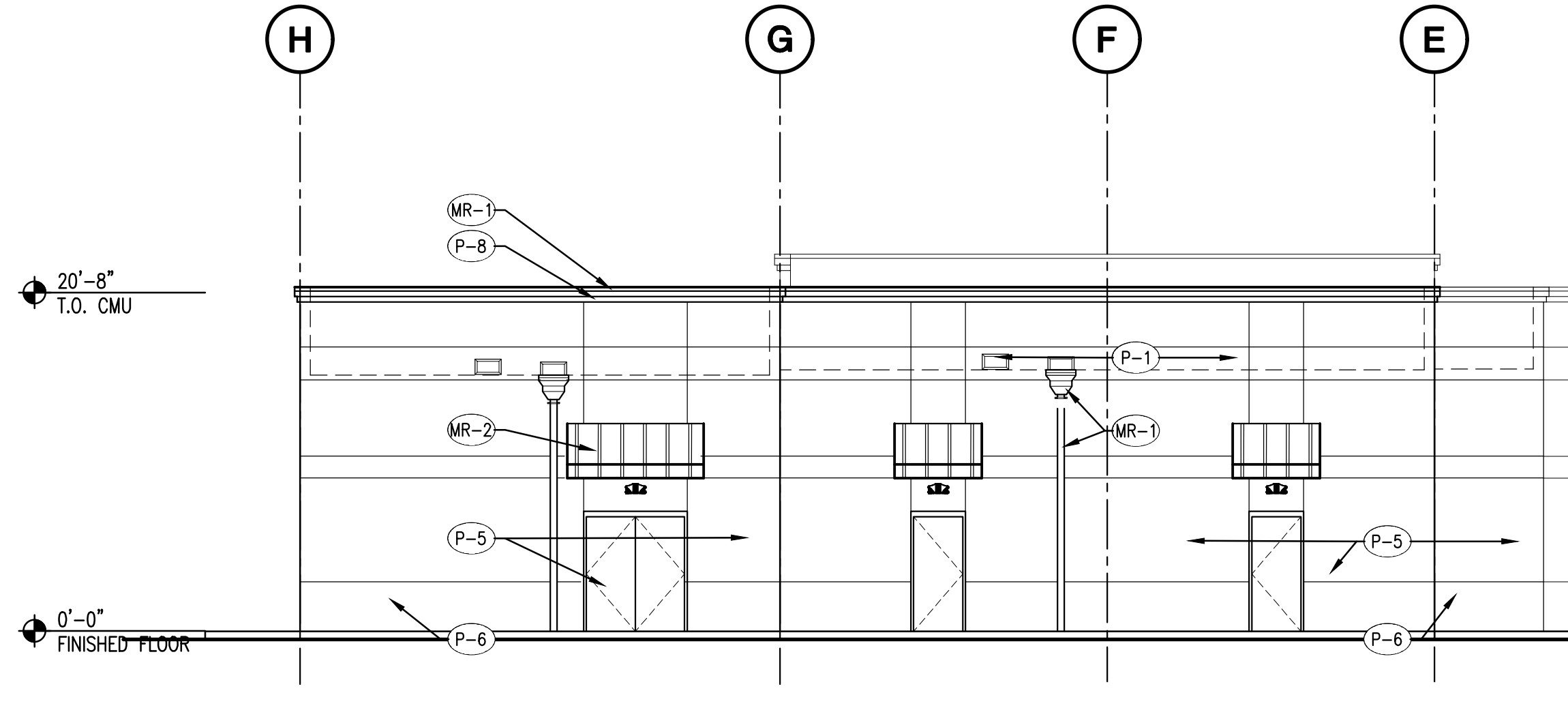
1 EXTERIOR FRONT ELEVATION
 1/8" = 1'-0"



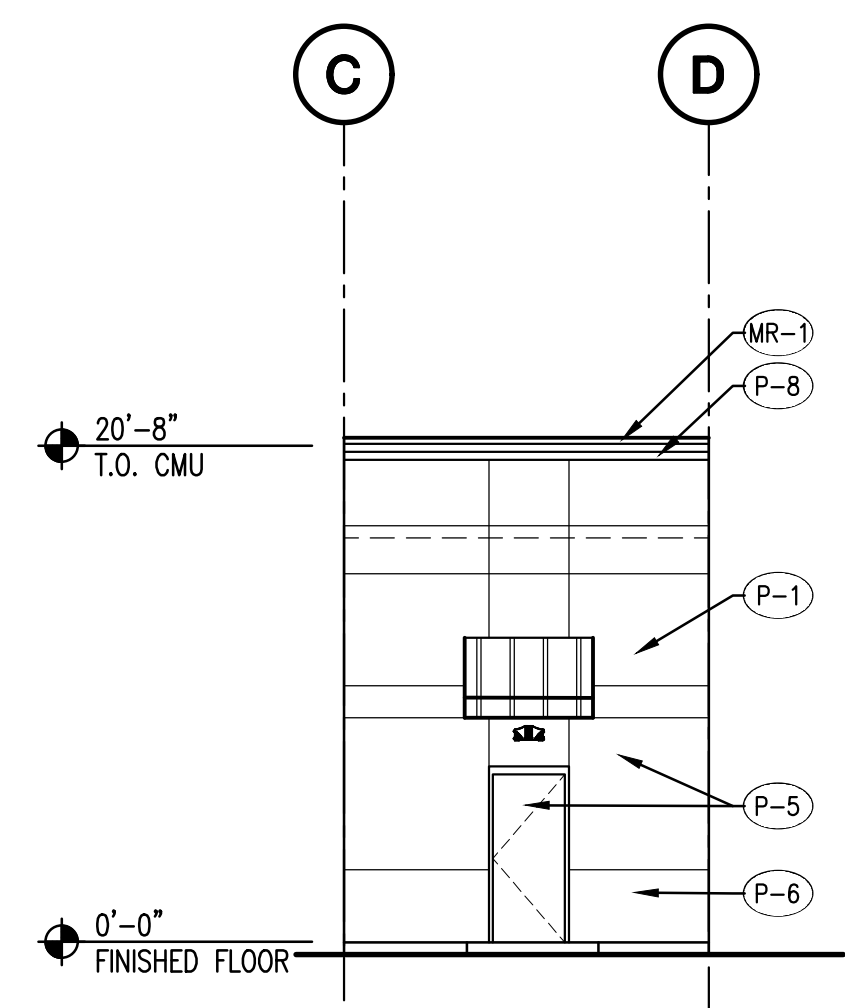
2 EXTERIOR FRONT ELEVATION
 1/8" = 1'-0"



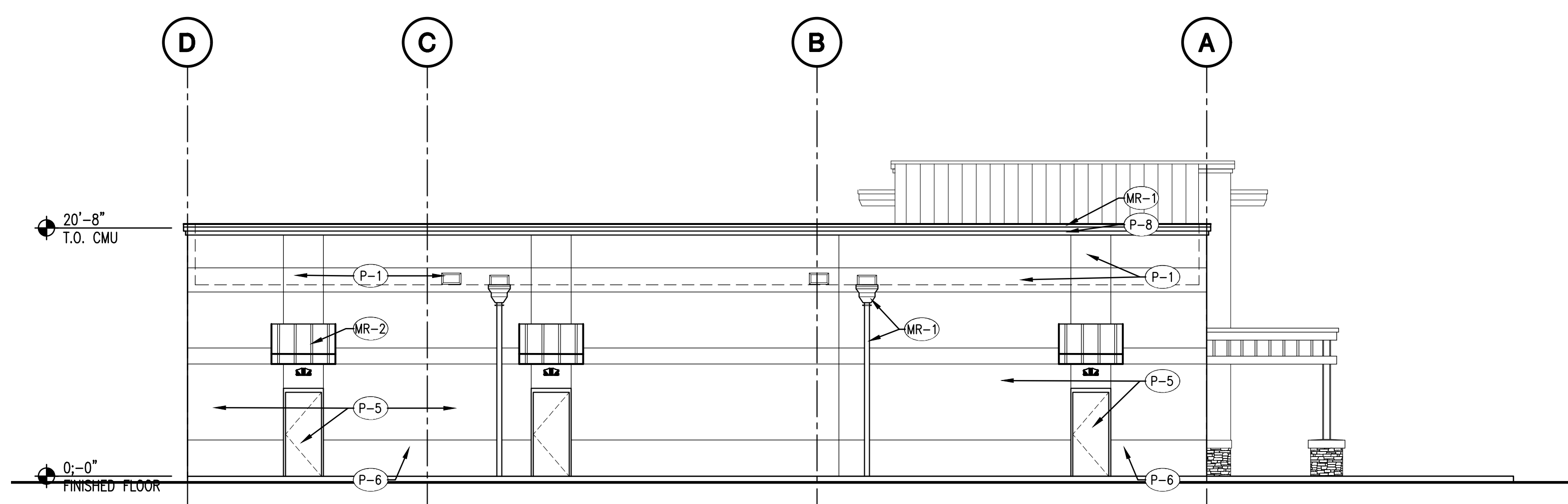
3 EXTERIOR SIDE ELEVATION
 1/8" = 1'-0"



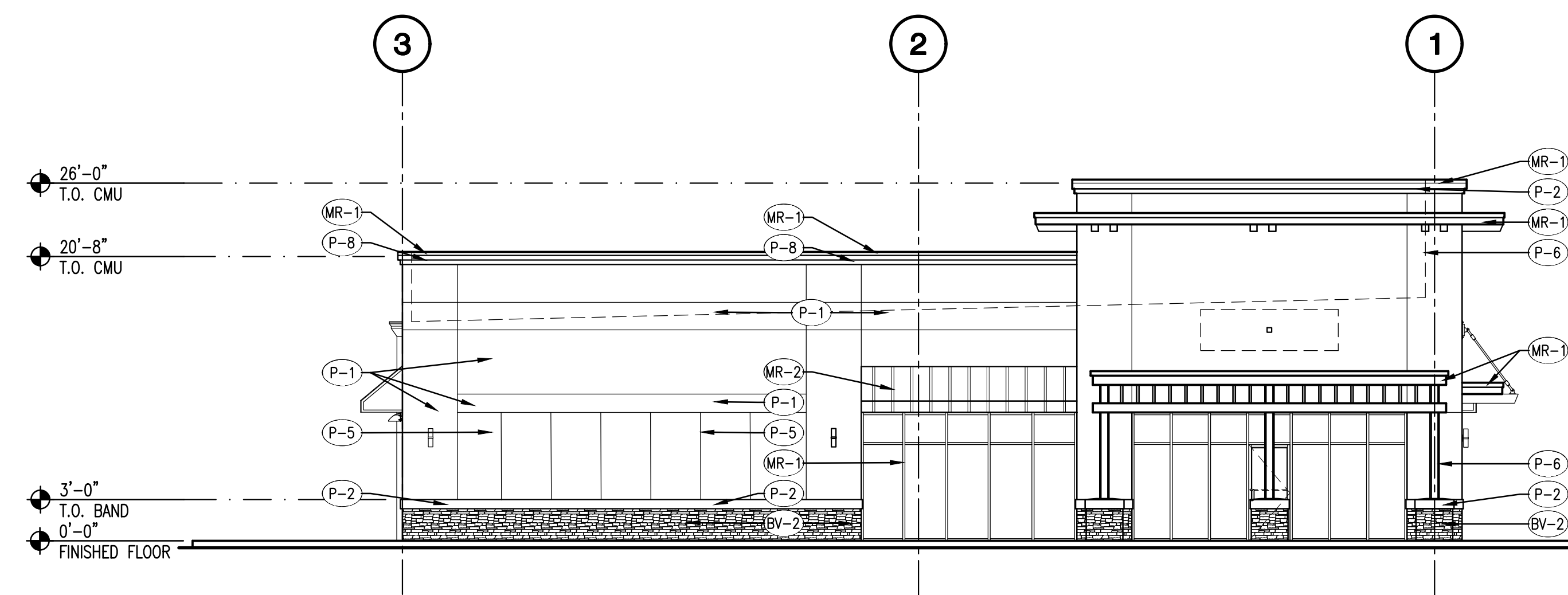
4 EXTERIOR REAR ELEVATION
 1/8" = 1'-0"



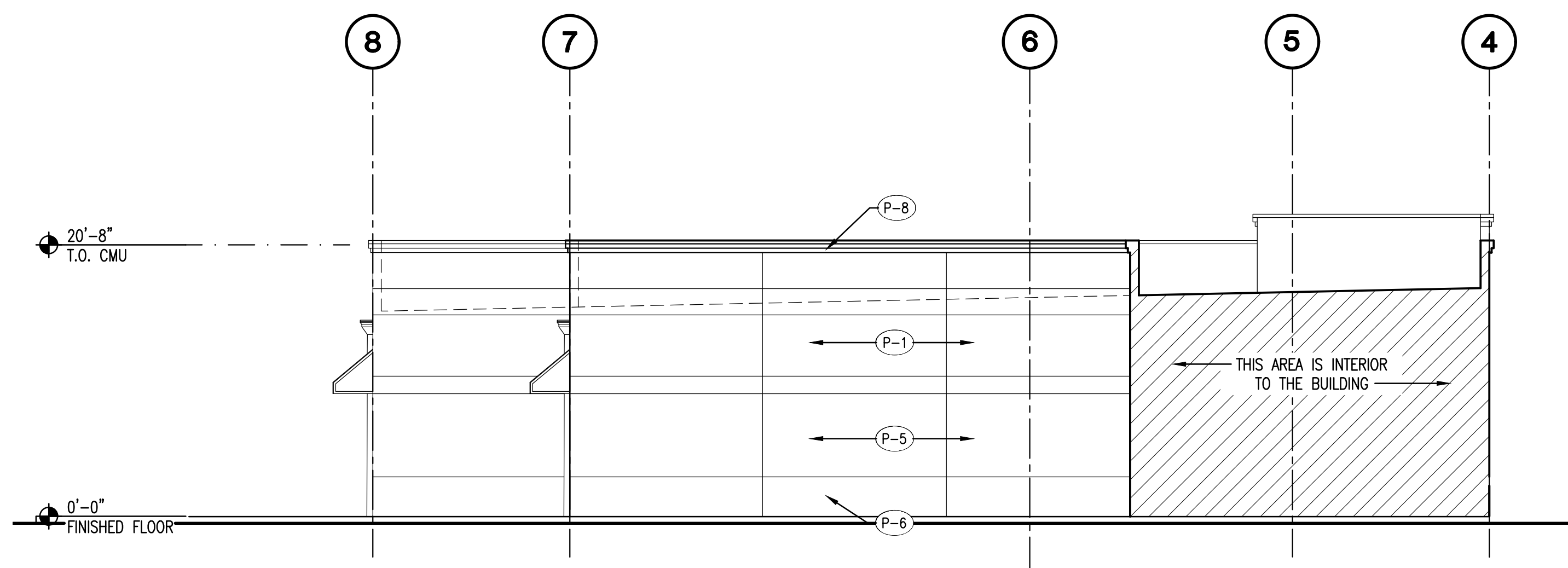
5 EXTERIOR REAR ELEVATION
 1/8" = 1'-0"



6 EXTERIOR REAR ELEVATION
 1/8" = 1'-0"



7 EXTERIOR SIDE ELEVATION
 1/8" = 1'-0"



8 EXTERIOR SIDE ELEVATION
 1/8" = 1'-0"

COLOR LEGEND	
PAINT	
(P-1)	SHERWIN-WILLIAMS #SW7008, "ALABASTER"
(P-2)	SHERWIN-WILLIAMS #SW7004, "SNOW BOUND"
(P-3)	SHERWIN-WILLIAMS #SW7018, "DOVETAIL"
(P-4)	SHERWIN-WILLIAMS #SW6401 "INDEPENDENT GOLD"
(P-5)	SHERWIN-WILLIAMS #SW7015, "REPOSE GRAY"
(P-6)	SHERWIN-WILLIAMS #SW7017, "DORIAN GRAY"
(P-7)	SHERWIN-WILLIAMS #SW7019, "GAUNTLET GRAY"
(P-8)	SHERWIN-WILLIAMS #SW7069, "IRON ORE"
MISCELLANEOUS	
(MV-1)	ACME BRICK - WESTCHESTER
(BV-2)	ELDORADO STONE - LEDGECUT33 PEBBLE BEACH
(BV-3)	CAST STONE - CAPS, SILLS AND TRIM BANDS
MISCELLANEOUS	
(MR-1)	CLEAR ANODIZED ALUMINUM (STOREFRONTS, COPING CAP/DRIP EDGE, CANTILEVERED ALUMINUM CANOPY, SCUPPER AND DOWNSPOUTS)
(MR-2)	PRE-FINISHED STANDING SEAM AWNING - "SLATE GRAY" BY "PAC-CLAD"
(MR-3)	FENCE - CHESTERFIELD WITH CERTAGRAIN TEXTURE - WEATHERED BLEND

THIS DRAWING AND ALL INFORMATION CONTAINED HEREIN IS THE SOLE PROPERTY OF FISHER AND ASSOCIATES, LLC. NO PART OF THIS DRAWING IS TO BE REPRODUCED OR TRANSMITTED IN ANY FORM OR BY ANY MEANS, ELECTRONIC OR MECHANICAL, INCLUDING PHOTOCOPYING, RECORDING, OR BY ANY INFORMATION STORAGE AND RETRIEVAL SYSTEM, WITHOUT THE WRITTEN PERMISSION OF FISHER AND ASSOCIATES, LLC. THIS DRAWING IS FOR GENERAL USE ON THIS PROJECT ONLY. ALL RIGHTS RESERVED. TO THE BEST OF MY KNOWLEDGE, THE SPECIFICATIONS AND PLANS SHOW HEREIN COMPLY WITH THE APPLICABLE MINIMUM BUILDING CODES IN EFFECT AT THE TIME.

FISHER AND ASSOCIATES, LLC.
 ARCHITECTS
 PLANNERS
 INTERIOR DESIGNERS
 286 BELLEFLORE CLEARWATER, FL 33764 (727) 448-4436
 AA2600708

FINISH ELEVATIONS
RIVERLAND TOWN CENTER
 RETAIL B
 MARSHALL PKWY. & COMMUNITY BLVD.
 PORT ST. LUCIE, FL

RELEASED FOR:
 BID
 PERMIT
 CONSTR.

REVISIONS:

STATE OF FLORIDA
 ARCHITECTS
 AR 0010829
 REGISTERED ARCHITECT

WILLIAM JOE FISHER
 ARCHITECT 0010829

A4.1F
 Issue Date: 11-08-22
 Project No.: 222035

DATE PLOTTED: 2/10/2023 4:17 PM Job: 222035 - RIVERLAND TOWN CENTER - RETAIL B - ARCHITECTURE - FINISH ELEVATIONS - SHEET A4.1F



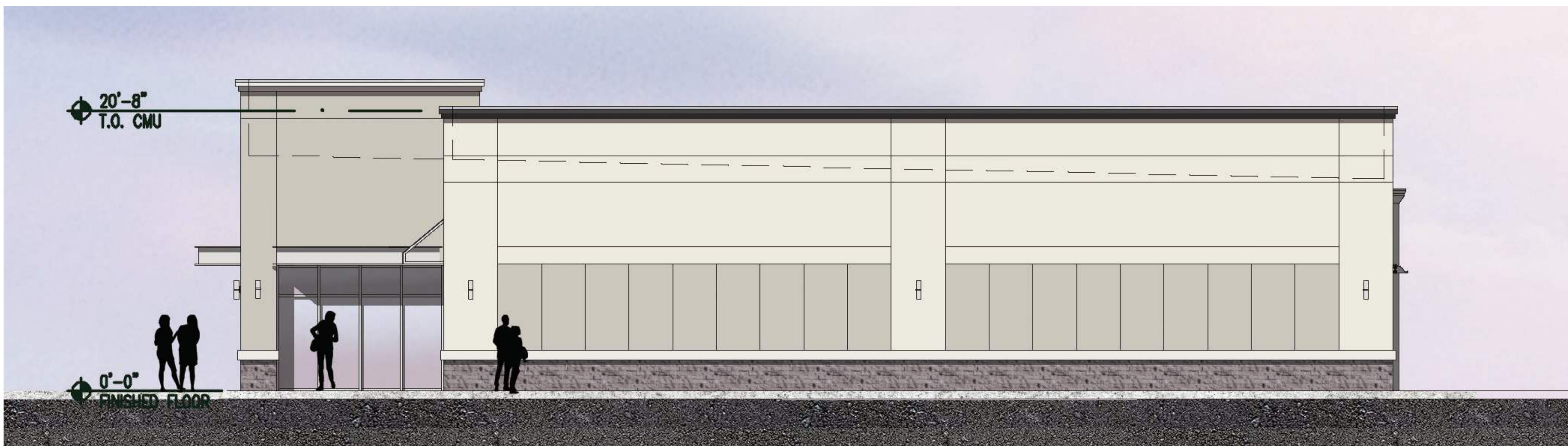
RETAIL B EAST ELEVATION



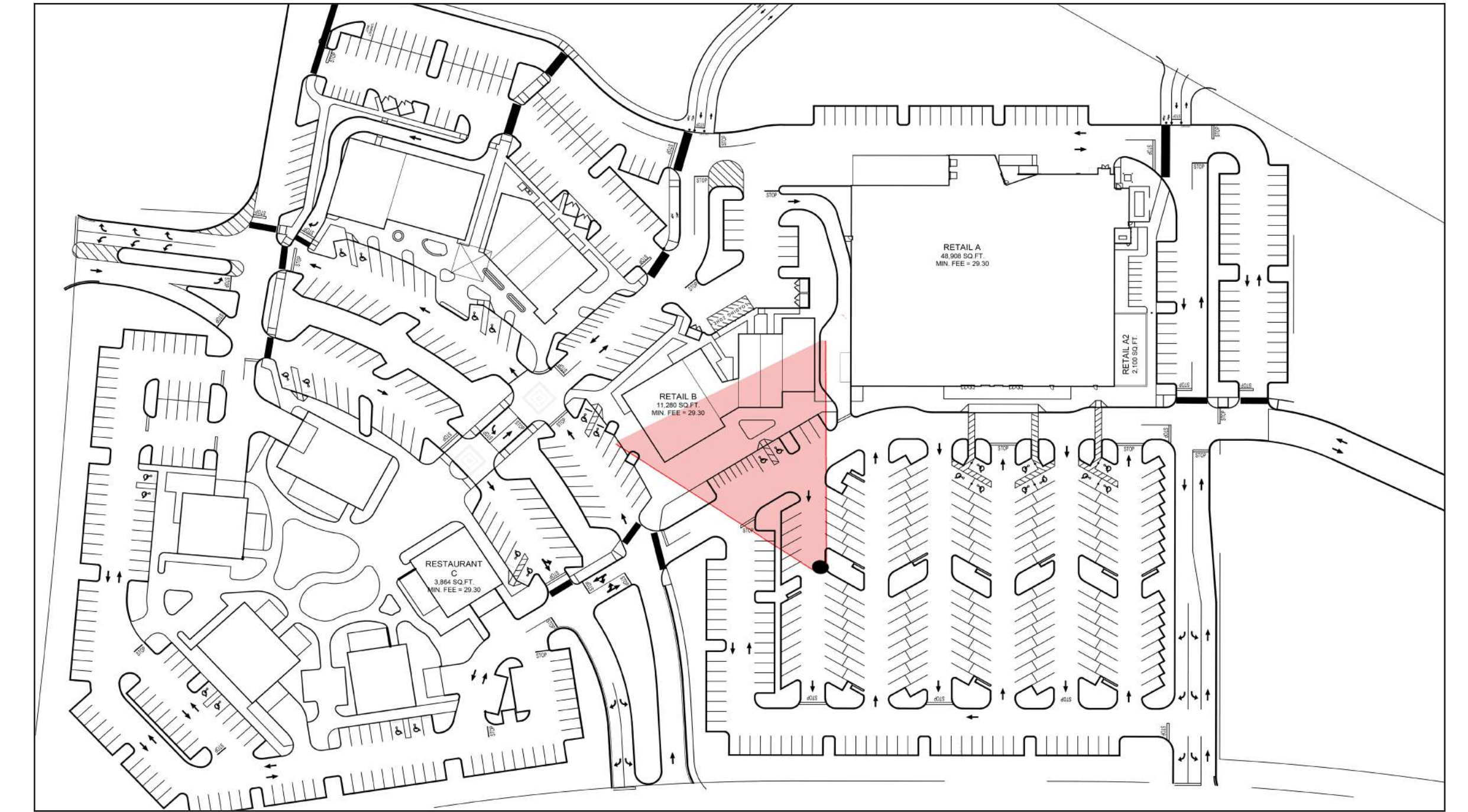
RETAIL B EAST ELEVATION



RETAIL B SOUTH ELEVATION



RETAIL B NORTH ELEVATION



	PAINT SW 7008 ALABASTER		PAINT SW 7004 SNOW BOUND		PAINT SW 7018 DOVETAIL		PAINT SW 6401 INDEPENDENT GOLD
	PAINT SW 7015 REPOSE GRAY		PAINT SW 7017 DORIAN GRAY		PAINT SW 7019 GAUNTLET GRAY		PAINT SW 7069 IRON ORE
	METAL PAC CLAD SLATE GRAY		METAL PAC CLAD PRE ANODIZED ALUMINUM		STONE ELDORADO STONE LEDGE- CUT33 PEBBLE BEACH		BRICK ACME BRICK WEST- CHESTER

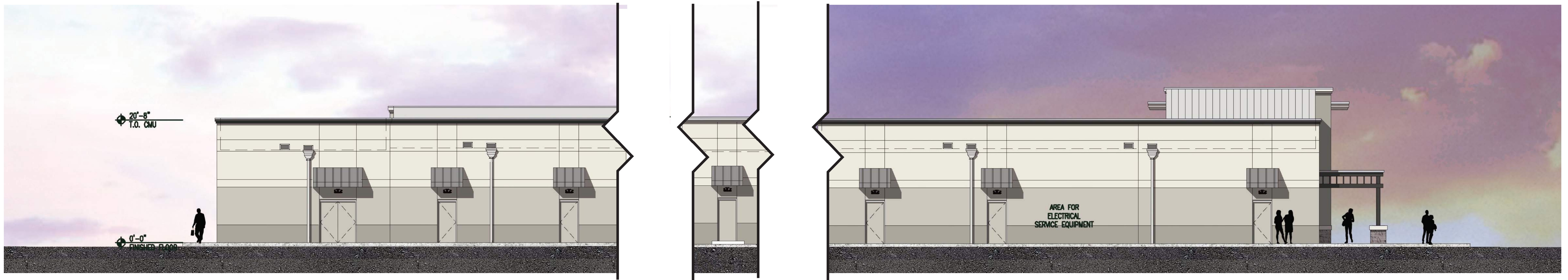


RIVERLAND TOWN CENTER PUBLIX
DESIGN DEVELOPMENT

PORT ST. LUCIE, FL

02.16.2023

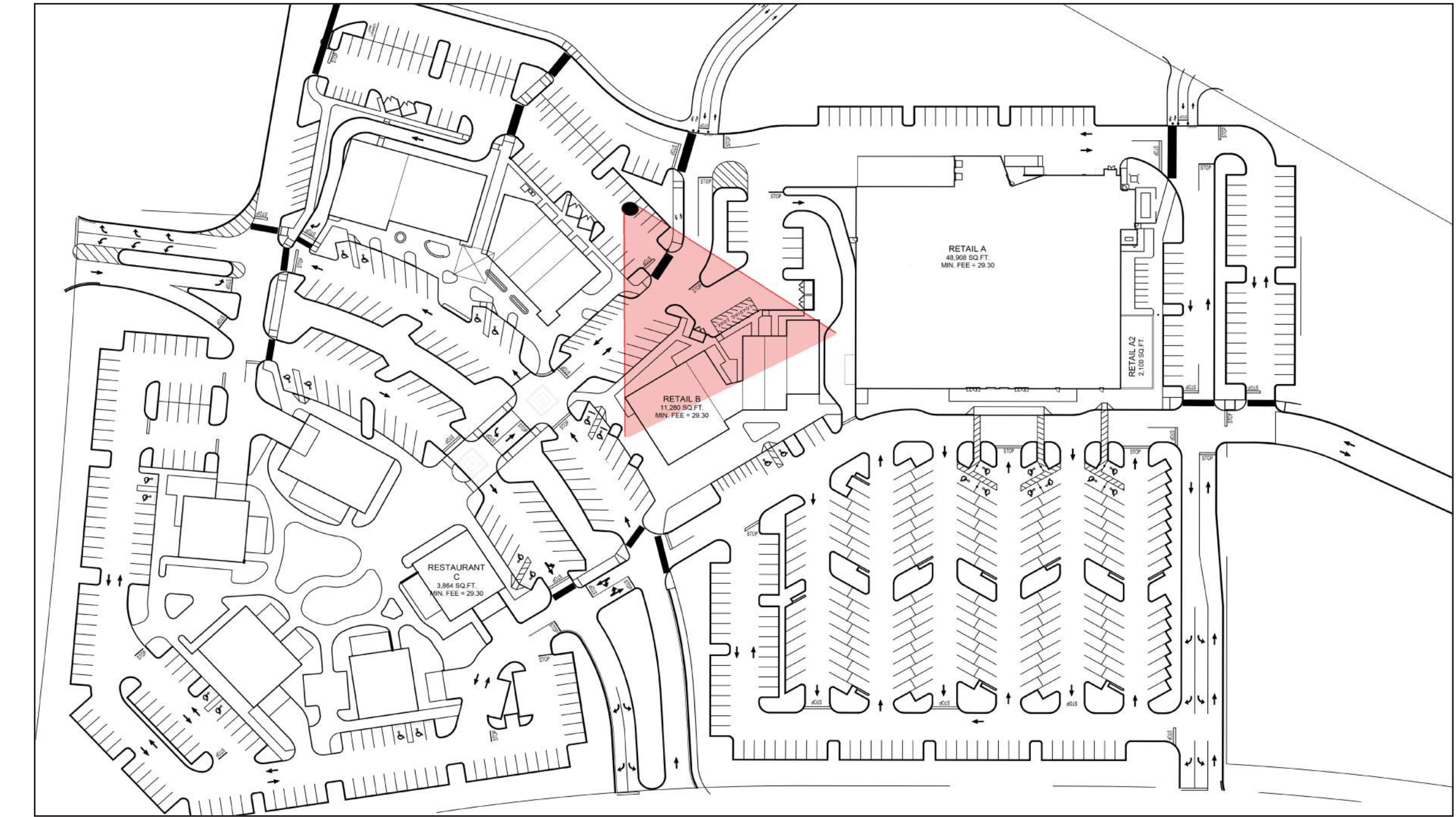




RETAIL B WEST ELEVATION



RETAIL B REAR SECTION



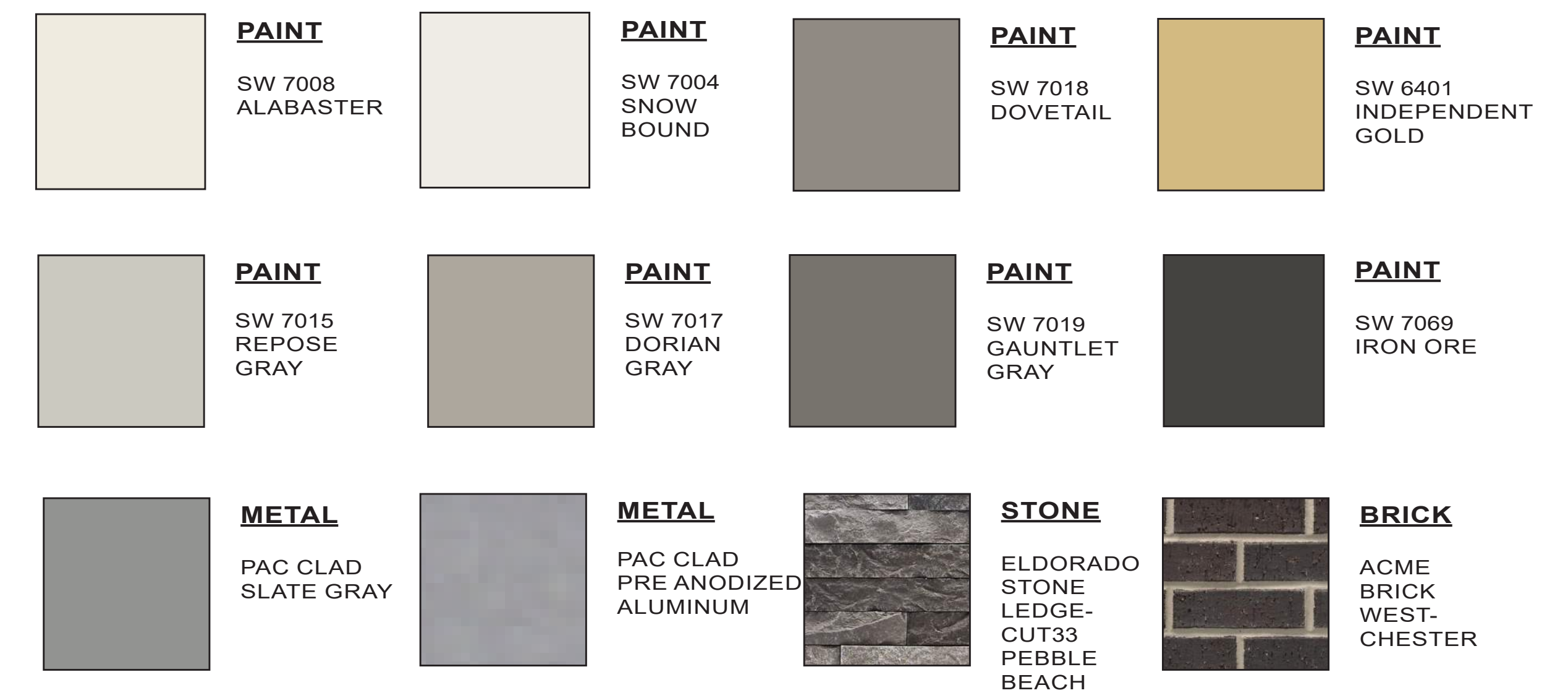
FRONT MONUMENT SIGNAGE ELEVATION

SIGNAGE PERMITTED: COMMERCIAL, INSTITUTIONAL, AND INDUSTRIAL COMPLEXES (THREE (3) ACRES AND OVER). FREESTANDING SIGNAGE FOR COMMERCIAL, INSTITUTIONAL, AND INDUSTRIAL COMPLEXES SHALL BE RESTRICTED TO ONE FREESTANDING SIGN PER STREET FRONTAGE. IN ADDITION, SITES HAVING MULTIPLE STREET FRONTAGES MAY ERECT ONE ADDITIONAL SIGN PER STREET FRONTAGE. ALL SUCH SIGNS SHALL COMPLY WITH REGULATIONS GOVERNING SIGNAGE FOR COMMERCIAL, INSTITUTIONAL, AND INDUSTRIAL COMPLEXES WHICH ARE CONTAINED IN TABLE I: SCHEDULE OF REGULATIONS FOR PERMANENT SIGNS REQUIRING PERMITS.

Free Standing Signs							
Use	Max. S.F. per single sign	Max. S.F. cumulative	Max. height	Min. setback from prop. line	Number of signs allowed	Lighting	
						Direct	Indirect
Multi-family > 10 units	32	N/A	10'	10'	See 155.08 (A) (2)	no	yes
Subdivision entrance	32	N/A	10'	10'	See 155.08 (A) (3)	no	yes
Government directional sign	4	N/A	10'	10'	N/A	no	no
Commercial, institutional, and Industrial							
< 3 acres	32	32	10'	10'	See 155.08 (G)	yes	yes
<i>Note: S.F. calculated = 1 sq. ft. per 5 lineal ft. of lot frontage</i>							
3-4.9 acres	60	Note	10'	10'	See 155.08 (H)	yes	yes
5-9.9 acres	100	Note	10'	10'		yes	yes
10-19.9 acres	150	Note	15'	10'		yes	yes
> 20 acres	200	Note	20'	10'		yes	yes

SIGNAGE CALCULATIONS: >20 ACRES = 200 SQFT. TOTAL ALLOWED

SIGNAGE PROVIDED: 200 SQFT. TOTAL BOXED AREA



RIVERLAND TOWN CENTER PUBLIX PORT ST. LUCIE, FL
DESIGN DEVELOPMENT

02.16.2023

