

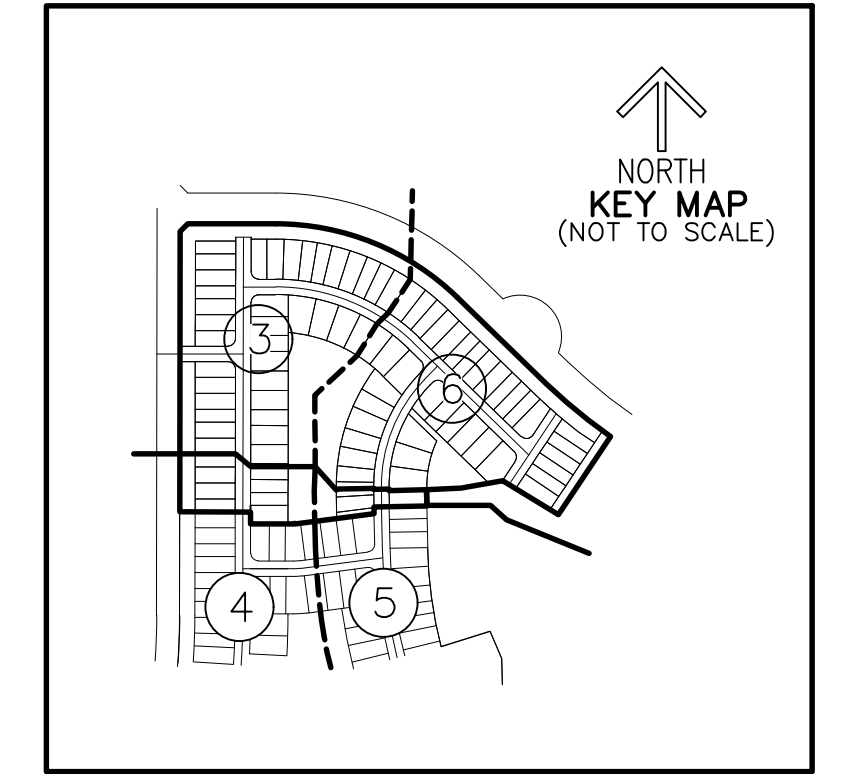
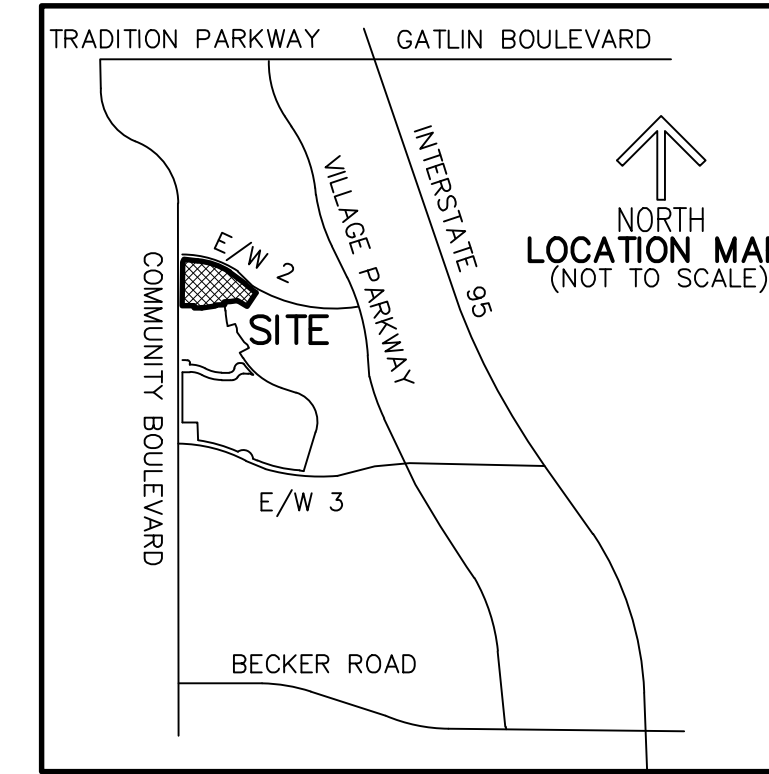
HERON PRESERVE AT TRADITION PHASE 2B

BEING A REPLAT OF PARCEL 2B, HERON PRESERVE AT TRADITION PHASE 2A,
AS RECORDED IN PLAT BOOK 98, PAGE 32 OF THE PUBLIC RECORDS OF ST. LUCIE COUNTY, FLORIDA,
LYING IN SECTION 22, TOWNSHIP 37 SOUTH, RANGE 39 EAST, CITY OF PORT ST. LUCIE, ST. LUCIE COUNTY, FLORIDA.

THIS INSTRUMENT PREPARED BY
DAVID P. LINDLEY
OF
CAULFIELD & WHEELER, INC.
SURVEYORS - ENGINEERS - PLANNERS
7900 GLADES ROAD, SUITE 100
BOCA RATON, FLORIDA 33434 - (561)392-1991
CERTIFICATE OF AUTHORIZATION NO. LB3591

TABULAR DATA

NAME	SQUARE FEET	ACRES
TRACT R	146,686	3.3675
TRACTS L1~L5	156,290	3.5879
TRACT W	114,339	2.6249
LOTS	574,439	13.1872
TOTAL	991,754	22.7675



LEGAL DESCRIPTION:

PARCEL 2B, HERON PRESERVE AT TRADITION PHASE 2A, AS RECORDED IN PLAT BOOK 98, PAGE 32 OF THE PUBLIC RECORDS OF ST. LUCIE COUNTY, FLORIDA.

SAID LANDS LYING IN SECTION 22, TOWNSHIP 37 SOUTH, RANGE 39 EAST, CITY OF PORT ST. LUCIE, ST. LUCIE COUNTY, FLORIDA.

CONTAINING 991,754 SQUARE FEET/22.7675 ACRES, MORE OR LESS.

CERTIFICATE OF OWNERSHIP & DEDICATION:

STATE OF FLORIDA
COUNTY OF ST. LUCIE

PULTE HOME COMPANY, LLC, A MICHIGAN LIMITED LIABILITY COMPANY, AUTHORIZED TO DO BUSINESS IN FLORIDA, OWNER OF THE LAND DESCRIBED AND PLATTED HEREON AS HERON PRESERVE AT TRADITION PHASE 2B, BEING IN ST. LUCIE COUNTY, FLORIDA, HAVE CAUSED SAID LANDS TO BE SURVEYED AND PLATTED AS SHOWN HEREON AND HEREBY DEDICATES AS FOLLOWS:

- THE ROAD RIGHT-OF-WAY (TRACT R), AS SHOWN HEREON, IS HEREBY DEDICATED TO THE HERON PRESERVE AT TRADITION HOMEOWNERS ASSOCIATION, INC., A FLORIDA NOT FOR PROFIT CORPORATION, ITS SUCCESSORS AND ASSIGNS, AS A PRIVATE ROAD RIGHT-OF-WAY FOR THE PURPOSE OF PROVIDING ACCESS AND DRAINAGE INSTALLATION, AND IS THE MAINTENANCE OBLIGATION OF SAID HERON PRESERVE AT TRADITION HOMEOWNERS ASSOCIATION, INC., A FLORIDA NOT FOR PROFIT CORPORATION, ITS SUCCESSORS AND ASSIGNS. ALL STREETS OR ROADS DESIGNATED HEREON AS PRIVATE STREETS OR ROADS ARE HEREBY SPECIFICALLY SET ASIDE FOR THE USE OF THE ADJACENT PROPERTY OWNERS ONLY, AND IN NO WAY CONSTITUTE A DEDICATION TO THE GENERAL PUBLIC OR THE CITY OF PORT ST. LUCIE. IT BEING SPECIFICALLY UNDERSTOOD THAT NO OBLIGATION IS IMPOSED ON THE CITY OF PORT ST. LUCIE, EITHER BY THE CITY OF PORT ST. LUCIE, OR BY THE CITY OF PORT ST. LUCIE, TO MAINTAIN OR IMPROVE THE PRIVATE STREETS OR ROADS. AN EASEMENT OVER AND UNDER SAID PRIVATE ROAD RIGHT-OF-WAY IS ALSO DEDICATED IN FAVOR OF THE CITY OF PORT ST. LUCIE, ITS SUCCESSORS AND/OR ASSIGNS, FOR ACCESS TO, AND INSTALLATION AND MAINTENANCE OF, PUBLIC UTILITY FACILITIES, INCLUDING BUT NOT LIMITED TO WATER AND WASTEWATER LINES AND APPURTENANT FACILITIES, AND ACCESS FOR THE CITY OF PORT ST. LUCIE SERVICE AND EMERGENCY VEHICLES. THE CITY OF PORT ST. LUCIE SHALL NOT BE RESPONSIBLE FOR ANY MAINTENANCE OBLIGATIONS FOR SAID EASEMENT AREA EXCEPT AS SHALL RELATE TO THE SERVICING OF SUCH PUBLIC UTILITIES BY THE CITY OF PORT ST. LUCIE. A NON-EXCLUSIVE INGRESS, EGRESS, DRAINAGE, AND UTILITY EASEMENT OVER ALL ROADS, ROADWAYS, AND ROAD RIGHTS-OF-WAY SHOWN OR DESCRIBED ON THIS PLAT IS DEDICATED TO SOUTHERN GROVE COMMUNITY DEVELOPMENT DISTRICT NO. 5 (AS DEFINED BELOW), ACTING BY AND UNDER DELEGATED AUTHORITY FROM, AND RECEIVING SUCH DEDICATION FOR THE USE AND BENEFICIAL OWNERSHIP OF, DISTRICT NO. 6 (AS DEFINED BELOW), IN ACCORDANCE WITH THE DISTRICT INTERLOCAL AGREEMENT, ITS SUCCESSORS AND ASSIGNS.
- AN INGRESS AND EGRESS EASEMENT IS HEREBY DEDICATED OVER TRACT R TO TRADITION COMMUNITY DEVELOPMENT DISTRICT NO. 1, A COMMUNITY DEVELOPMENT DISTRICT ESTABLISHED IN ACCORDANCE WITH CHAPTER 190, FLORIDA STATUTES, ITS SUCCESSORS AND ASSIGNS. IT BEING SPECIFICALLY UNDERSTOOD THAT NO OBLIGATION IS IMPOSED ON THE DISTRICT NOR SHALL ANY REQUEST BE ENTERAINED BY THE DISTRICT TO MAINTAIN OR IMPROVE THE PRIVATE STREETS OR ROADS UNDERLYING SAID EASEMENT.
- ALL PLATTED UTILITY EASEMENTS (UE) SHALL PROVIDE THAT SUCH EASEMENTS SHALL ALSO BE EASEMENTS FOR THE CONSTRUCTION, INSTALLATION, MAINTENANCE, AND OPERATION OF CABLE TELEVISION SERVICES; PROVIDED, HOWEVER, NO SUCH CONSTRUCTION, INSTALLATION, MAINTENANCE, AND OPERATION OF CABLE TELEVISION SERVICES SHALL INTERFERE WITH THE FACILITIES AND SERVICES OF AN ELECTRIC, TELEPHONE, GAS, OR OTHER PUBLIC UTILITY. IN THE EVENT A CABLE TELEVISION COMPANY DAMAGES THE FACILITIES OF A PUBLIC UTILITY, IT SHALL BE SOLELY RESPONSIBLE FOR THE DAMAGES. THIS SECTION SHALL NOT APPLY TO THOSE PRIVATE EASEMENTS GRANTED TO OR OBTAINED BY A PARTICULAR ELECTRIC, TELEPHONE, GAS, OR OTHER PUBLIC UTILITY. SUCH CONSTRUCTION, INSTALLATION, MAINTENANCE, AND OPERATION SHALL COMPLY WITH THE NATIONAL ELECTRICAL SAFETY CODE AS ADOPTED BY THE FLORIDA PUBLIC SERVICE COMMISSION. UTILITY EASEMENTS ARE ALSO DEDICATED IN FAVOR OF THE CITY OF PORT ST. LUCIE, FLORIDA, ITS SUCCESSORS AND/OR ASSIGNS, FOR ACCESS TO, INSTALLATION AND MAINTENANCE OF PUBLIC UTILITIES AND FACILITIES INCLUDING, BUT NOT LIMITED TO, WATER AND WASTEWATER LINES AND APPURTENANT FACILITIES. THE CITY OF PORT ST. LUCIE, FLORIDA SHALL NOT BE RESPONSIBLE FOR ANY MAINTENANCE OBLIGATIONS FOR SAID EASEMENT EXCEPT AS SHALL RELATE TO THE SERVICING OF SUCH PUBLIC UTILITIES BY THE CITY OF PORT ST. LUCIE, FLORIDA.
- THE DRAINAGE EASEMENTS (DE) AS SHOWN HEREON, ARE HEREBY DEDICATED TO THE HERON PRESERVE AT TRADITION HOMEOWNERS ASSOCIATION, INC., A FLORIDA NOT FOR PROFIT CORPORATION, ITS SUCCESSORS AND ASSIGNS, AS PRIVATE DRAINAGE EASEMENTS FOR THE PURPOSE OF ACCESS TO AND THE INSTALLATION OF DRAINAGE FACILITIES, AND THEY ARE THE MAINTENANCE RESPONSIBILITIES OF SAID HERON PRESERVE AT TRADITION HOMEOWNERS ASSOCIATION, INC.
- THE OPEN SPACE TRACTS (L1, L2, L3, L4 AND L5) AS SHOWN HEREON, ARE HEREBY DEDICATED TO THE HERON PRESERVE AT TRADITION HOMEOWNERS ASSOCIATION, INC., A FLORIDA NOT FOR PROFIT CORPORATION, ITS SUCCESSORS AND ASSIGNS, FOR OPEN SPACE PURPOSES INCLUDING DRAINAGE, AND THEY ARE THE MAINTENANCE RESPONSIBILITIES OF SAID HERON PRESERVE AT TRADITION HOMEOWNERS ASSOCIATION OF ST. LUCIE COUNTY, INC.
- THE WATER MANAGEMENT TRACT (W), SHOWN OR DESCRIBED ON THIS PLAT ARE DEDICATED TO AND IS THE MAINTENANCE RESPONSIBILITIES OF THE SOUTHERN GROVE COMMUNITY DEVELOPMENT DISTRICT NO. 5, A COMMUNITY DEVELOPMENT DISTRICT ESTABLISHED IN ACCORDANCE WITH CHAPTER 190, FLORIDA STATUTES ("DISTRICT NO. 5"), ACTING BY AND UNDER DELEGATED AUTHORITY FROM, AND RECEIVING SUCH DEDICATION FOR THE USE AND BENEFICIAL OWNERSHIP OF, THE SOUTHERN GROVE COMMUNITY DEVELOPMENT DISTRICT NO. 6, A COMMUNITY DEVELOPMENT DISTRICT ESTABLISHED IN ACCORDANCE WITH CHAPTER 190, FLORIDA STATUTES ("DISTRICT NO. 6"), IN ACCORDANCE WITH THE SECOND AMENDED AND RESTATED DISTRICT INTERLOCAL AGREEMENT DATED AS OF JULY 9, 2013, AND RECORDED AT OFFICIAL RECORDS BOOK 3539, PAGES 672-713, OF THE PUBLIC RECORDS OF ST. LUCIE COUNTY, FLORIDA ("DISTRICT INTERLOCAL AGREEMENT"), ITS SUCCESSORS AND ASSIGNS, FOR THE PURPOSE OF PROVIDING DRAINAGE, AND SURFACE WATER MANAGEMENT. AN INGRESS AND EGRESS EASEMENT OVER THE WATER MANAGEMENT TRACT IS HEREBY DEDICATED TO TRADITION COMMUNITY DEVELOPMENT DISTRICT NO. 1, ITS SUCCESSORS AND ASSIGNS FOR THE RIGHT TO DRAW WATER FROM, AND DISCHARGE WATER TO SAID WATER MANAGEMENT TRACT.
- THE WATER MANAGEMENT ACCESS EASEMENTS AND WATER MANAGEMENT EASEMENTS SHOWN OR DESCRIBED ON THIS PLAT ARE DEDICATED TO THE SOUTHERN GROVE COMMUNITY DEVELOPMENT DISTRICT NO. 5, A COMMUNITY DEVELOPMENT DISTRICT ESTABLISHED IN ACCORDANCE WITH CHAPTER 190, FLORIDA STATUTES ("DISTRICT NO. 5"), ACTING BY AND UNDER DELEGATED AUTHORITY FROM, AND RECEIVING SUCH DEDICATION FOR THE USE AND BENEFICIAL OWNERSHIP OF, THE SOUTHERN GROVE COMMUNITY DEVELOPMENT DISTRICT NO. 6, A COMMUNITY DEVELOPMENT DISTRICT ESTABLISHED IN ACCORDANCE WITH CHAPTER 190, FLORIDA STATUTES ("DISTRICT NO. 6"), IN ACCORDANCE WITH THE SECOND AMENDED AND RESTATED DISTRICT INTERLOCAL AGREEMENT DATED AS OF JULY 9, 2013, AND RECORDED AT OFFICIAL RECORDS BOOK 3539, PAGES 672-713, OF THE PUBLIC RECORDS OF ST. LUCIE COUNTY, FLORIDA ("DISTRICT INTERLOCAL AGREEMENT"), ITS SUCCESSORS AND ASSIGNS, FOR THE PURPOSE OF PROVIDING INGRESS AND EGRESS FOR THE CITY OF PORT ST. LUCIE SERVICE AND EMERGENCY VEHICLES.
- THE LAKE MAINTENANCE EASEMENT (LME) AS SHOWN HEREON, IS HEREBY DEDICATED TO THE HERON PRESERVE AT TRADITION HOMEOWNERS ASSOCIATION, INC., A FLORIDA NOT FOR PROFIT CORPORATION, ITS SUCCESSORS AND ASSIGNS, AS LAKE MAINTENANCE EASEMENTS FOR THE PURPOSE OF ACCESS TO AND THE MAINTENANCE OF THE WATER MANAGEMENT TRACT, AND IT IS THE MAINTENANCE RESPONSIBILITY OF SAID HERON PRESERVE AT TRADITION HOMEOWNERS ASSOCIATION OF ST. LUCIE COUNTY, INC.
- THE PRIVATE UTILITY EASEMENTS (PSLUE) SHOWN HEREON ARE HEREBY DEDICATED IN FAVOR OF THE CITY OF PORT ST. LUCIE, FLORIDA, ITS SUCCESSORS AND/OR ASSIGNS, FOR ACCESS TO, AND INSTALLATION AND MAINTENANCE OF, PUBLIC UTILITY FACILITIES, INCLUDING BUT NOT LIMITED TO, WATER AND WASTE WATER LINES AND APPURTENANT FACILITIES. THE CITY OF PORT ST. LUCIE SHALL NOT BE RESPONSIBLE FOR ANY MAINTENANCE OBLIGATIONS FOR SAID EASEMENTS EXCEPT AS SHALL RELATE TO THE SERVICING OF SUCH PUBLIC UTILITIES BY THE CITY OF PORT ST. LUCIE. THERE SHALL BE NO OTHER PUBLIC OR PRIVATE UTILITY FACILITIES INSTALLED IN, ON, OVER, UNDER OR ACROSS THE EASEMENT AREAS WITHOUT THE CITY'S WRITTEN PERMISSION.
- FLOWAGE EASEMENT IS HEREBY DEDICATED TO THE CITY OF PORT ST. LUCIE, ITS SUCCESSORS AND ASSIGNS, FOR STORMWATER MANAGEMENT AND STORMWATER FLOWAGE OVER TRACT (W) AND THE WATER MANAGEMENT EASEMENTS AND WATER MANAGEMENT ACCESS EASEMENTS. THE CITY OF PORT ST. LUCIE SHALL HAVE THE RIGHT, BUT NOT THE OBLIGATION, TO CONSTRUCT AND MAINTAIN ANY PORTION OF THE DRAINAGE SYSTEM WITHIN THESE TRACTS AND EASEMENTS WHICH IS ASSOCIATED WITH DRAINAGE FROM CITY RIGHT-OF-WAY.
- THE IRRIGATION EASEMENTS (IQE) AS SHOWN HEREON ARE HEREBY DEDICATED TO THE TRADITION COMMUNITY DEVELOPMENT DISTRICT NO. 1, ITS SUCCESSORS AND/OR ASSIGNS, FOR THE PURPOSES OF CONSTRUCTION, OPERATION, MAINTENANCE IMPROVING OR REPLACING OF ONE OR MORE IRRIGATION/REUSE AND/OR UTILITY TRANSMISSION OR DISTRIBUTION LINES, AND ALL NORMAL APPURTENANCES THERETO, INCLUDING THE NECESSARY RIGHTS OF INGRESS AND EGRESS FOR THE PURPOSES OF PROVIDING IRRIGATION/REUSE AND/OR UTILITY SERVICES PROVIDED THAT SUCH RIGHTS OF INGRESS AND EGRESS SHALL BE EXERCISED IN A REASONABLE MANNER IN ACCORDANCE WITH THE STANDARD PRACTICES IN THE INDUSTRY, TOGETHER WITH THE RIGHT AND PRIVILEGE TO INSPECT, ALTER, REMOVE OR RELOCATE SUCH LINES, FACILITIES AND APPURTENANCES THERETO WITHIN THE EASEMENT HEREIN GRANTED, WITH ALL RIGHTS AND PRIVILEGES NECESSARY OR CONVENIENT FOR THE FULL USE AND ENJOYMENT THEREOF FOR THE ABOVE-STATED PURPOSES. THE CITY OF PORT ST. LUCIE, FLORIDA ("CITY") SHALL BE ALLOWED TO CROSS THE IRRIGATION EASEMENTS WITH (A) CITY TELECOMMUNICATION LINES WHICH SERVE SOLELY THE CITY'S FACILITIES AND (B) CITY MUNICIPAL UTILITY LINES.
- THE MULTI PURPOSE PATHWAY EASEMENT (MPPE) AS SHOWN HEREON IS HEREBY DEDICATED TO THE CITY OF PORT ST. LUCIE FOR USE AS A PEDESTRIAN AND BICYCLE MULTI PURPOSE PATHWAY.

CERTIFICATE OF OWNERSHIP & DEDICATION:

IN WITNESS WHEREOF, THE ABOVE NAMED MICHIGAN LIMITED LIABILITY COMPANY, AUTHORIZED TO DO BUSINESS IN FLORIDA, HAS CAUSED THESE PRESENTS TO BE SIGNED BY ITS DIVISION VICE PRESIDENT, THIS _____ DAY OF _____, 202__.

PULTE HOME COMPANY, LLC,
A MICHIGAN LIMITED LIABILITY COMPANY
AUTHORIZED TO DO BUSINESS IN FLORIDA

WITNESS: _____
PRINT NAME

BY: _____
PATRICK GONZALEZ

DIVISION VICE PRESIDENT

WITNESS: _____
PRINT NAME

ACKNOWLEDGEMENT:

STATE OF FLORIDA)
COUNTY OF PALM BEACH)

THE FOREGOING INSTRUMENT WAS ACKNOWLEDGED BEFORE ME BY MEANS OF [] PHYSICAL PRESENCE OR [] ONLINE NOTARIZATION, THIS _____ DAY OF _____, 202__, BY PATRICK GONZALEZ, DIVISION VICE PRESIDENT, ON BEHALF OF THE PULTE HOME COMPANY, A MICHIGAN LIMITED LIABILITY COMPANY, AUTHORIZED TO DO BUSINESS IN FLORIDA, WHO IS [] PERSONALLY KNOWN TO ME OR HAS PRODUCED _____ AS IDENTIFICATION.

NOTARY PUBLIC

PRINT NAME
MY COMMISSION EXPIRES: _____
COMMISSION NUMBER: _____

ACCEPTANCE OF DEDICATIONS AND RESERVATIONS:

STATE OF FLORIDA)
COUNTY OF PALM BEACH)

THE HERON PRESERVE AT TRADITION HOMEOWNERS ASSOCIATION OF ST. LUCIE COUNTY, INC., A FLORIDA CORPORATION NOT FOR PROFIT, HEREBY ACCEPTS THE DEDICATIONS OR RESERVATIONS AND OTHER OBLIGATIONS TO SAID ASSOCIATION AS STATED AND SHOWN HEREON, AND HEREBY ACCEPTS ITS MAINTENANCE OBLIGATIONS FOR SAME AS STATED HEREON, DATED THIS _____ DAY OF _____, 202__.

HERON PRESERVE AT TRADITION HOMEOWNERS ASSOCIATION, INC
A FLORIDA CORPORATION NOT FOR PROFIT

WITNESS: _____
PRINT NAME

BY: _____
DAVID KANAREK
PRESIDENT

WITNESS: _____
PRINT NAME

ACKNOWLEDGEMENT:

STATE OF FLORIDA)
COUNTY OF ST. LUCIE)

THE FOREGOING INSTRUMENT WAS ACKNOWLEDGED BEFORE ME BY MEANS OF [] PHYSICAL PRESENCE OR [] ONLINE NOTARIZATION, THIS _____ DAY OF _____, 202__, BY DAVID KANAREK, PRESIDENT, ON BEHALF OF THE HERON PRESERVE AT TRADITION HOMEOWNERS ASSOCIATION, INC, A FLORIDA CORPORATION NOT FOR PROFIT, WHO IS [] PERSONALLY KNOWN TO ME OR HAS PRODUCED _____ AS IDENTIFICATION.

NOTARY PUBLIC

PRINT NAME
MY COMMISSION EXPIRES: _____
COMMISSION NUMBER: _____

ACCEPTANCE OF DEDICATION:

THE SOUTHERN GROVE COMMUNITY DEVELOPMENT DISTRICT NO. 5, A COMMUNITY DEVELOPMENT DISTRICT ESTABLISHED IN ACCORDANCE WITH CHAPTER 190, FLORIDA STATUTES ("DISTRICT NO. 5"), ACTING FOR ITSELF AND ON BEHALF OF EACH OF THE OTHER "DISTRICTS" AS DEFINED IN THE SECOND AMENDED AND RESTATED DISTRICT INTERLOCAL AGREEMENT DATED AS OF JULY 9, 2013, AND RECORDED AT OFFICIAL RECORDS BOOK 3539, PAGES 672-713, OF THE PUBLIC RECORDS OF ST. LUCIE COUNTY, FLORIDA, HEREBY ACCEPTS THE DEDICATIONS OF WATER MANAGEMENT TRACT, WATER MANAGEMENT EASEMENTS AND WATER MANAGEMENT ACCESS EASEMENTS, NON-EXCLUSIVE INGRESS, EGRESS, DRAINAGE, AND UTILITY EASEMENT, SET FORTH UPON THE WITHIN PLAT AND SPECIFICALLY DEDICATED TO DISTRICT NO. 5, PROVIDED, HOWEVER, THAT ACCEPTANCE OF SUCH DEDICATIONS AND OF THE OBLIGATION TO OPERATE AND MAINTAIN SUCH FACILITIES IS EXPRESSLY CONDITIONED UPON (I) COMPLETION OF CONSTRUCTION OF ALL WATER MANAGEMENT SYSTEM IMPROVEMENTS FOR THE PHASE OF SUCH SYSTEM IN WHICH THE DEDICATED TRACT AND EASEMENTS ARE LOCATED IN STRICT COMPLIANCE WITH BOTH THE APPROVED PLANS FOR, AND THE REQUIREMENTS OF ALL REGULATORY AUTHORITIES EXERCISING JURISDICTION OVER, SUCH IMPROVEMENTS, AND (II) COMPLIANCE WITH ALL SURFACE WATER MANAGEMENT SYSTEM TURNOVER REQUIREMENTS RELATING TO SUCH FACILITIES, AS SET FORTH IN THE POLICIES AND PROCEDURES MANUAL FOR THE DISTRICTS. DISTRICT NO. 5 DOES NOT ACCEPT ANY OTHER RIGHT-OF-WAY, EASEMENT, TRACT, OR OTHER INTEREST IN REAL ESTATE OTHERWISE DEDICATED TO THE PUBLIC.

DATED THIS _____ DAY OF _____, 202__.

CHAIRMAN: _____ SECRETARY: _____

ACCEPTANCE OF DEDICATION:

TRADITION COMMUNITY DEVELOPMENT DISTRICT NO. 1, A COMMUNITY DEVELOPMENT DISTRICT ESTABLISHED IN ACCORDANCE WITH CHAPTER 190, FLORIDA STATUTES, HEREBY ACCEPTS THE DEDICATIONS OF INGRESS AND EGRESS OVER TRACT R, IRRIGATION EASEMENTS (IQE), SET FORTH UPON THE WITHIN PLAT AND SPECIFICALLY DEDICATED TO SUCH DISTRICT.

DATED THIS _____ DAY OF _____, 202__.

CHAIRMAN: _____ SECRETARY: _____

CLERK'S RECORDING CERTIFICATE:

STATE OF FLORIDA
COUNTY OF ST. LUCIE

I, MICHELLE R. MILLER, CLERK OF THE CIRCUIT COURT OF ST. LUCIE COUNTY, FLORIDA, DO HEREBY CERTIFY THAT THIS PLAT HAS BEEN EXAMINED, AND THAT IT COMPLIES IN FORM WITH ALL THE REQUIREMENTS OF THE LAWS OF FLORIDA PERTAINING TO MAPS AND PLATS, AND THAT THIS PLAT HAS BEEN FILED FOR RECORD IN PLAT BOOK _____, PAGE(S) _____ OF THE PUBLIC RECORDS OF ST. LUCIE COUNTY, FLORIDA, THIS _____ DAY OF _____, 202__.

MICHELLE R. MILLER
CLERK OF THE CIRCUIT COURT
ST. LUCIE COUNTY, FLORIDA

CLERK OF
THE COURT

APPROVAL OF CITY:

STATE OF FLORIDA
CITY OF PORT ST. LUCIE

IT IS HEREBY CERTIFIED THAT THIS PLAT OF HERON PRESERVE AT TRADITION PHASE 2B, HAS BEEN OFFICIALLY APPROVED, INCLUDING THE RELEASE OF ALL PRIOR DEDICATIONS (AS SHOWN ON THE PLAT OF PULTE AT TRADITION PHASE 2A) APPLICABLE TO THE LANDS BEING PLATTED HEREIN AND DEDICATIONS TO THE CITY HEREIN ARE ACCEPTED FOR RECORD BY THE CITY COUNCIL OF THE CITY OF PORT ST. LUCIE, FLORIDA, THIS _____ DAY OF _____, 202__.

ATTEST: _____ CITY OF PORT ST. LUCIE

SALLY WALSH, CITY CLERK SHANNON M. MARTIN, MAYOR

CITY OF
PORT ST. LUCIE

HERON PRESERVE AT TRADITION PHASE 2B

BEING A REPLAT OF PARCEL 2B, HERON PRESERVE AT TRADITION PHASE 2A,
AS RECORDED IN PLAT BOOK 98, PAGE 32 OF THE PUBLIC RECORDS OF ST. LUCIE COUNTY, FLORIDA,
LYING IN SECTION 22, TOWNSHIP 37 SOUTH, RANGE 39 EAST, CITY OF PORT ST. LUCIE, ST. LUCIE COUNTY, FLORIDA.

THIS INSTRUMENT PREPARED BY
DAVID P. LINDLEY
OF
CAULFIELD & WHEELER, INC.
SURVEYORS – ENGINEERS – PLANNERS
7900 GLADES ROAD, SUITE 100
BOCA RATON, FLORIDA 33434 – (561)392-1991
CERTIFICATE OF AUTHORIZATION NO. LB3591

PLAT BOOK _____

PAGE _____

SHEET 2 OF 6

TITLE CERTIFICATION:

STATE OF FLORIDA
COUNTY OF PALM BEACH

THE UNDERSIGNED, STEVEN R. PARSON, DULY LICENSED IN THE STATE OF FLORIDA, DOES HEREBY CERTIFY THAT, AS OF THE _____ DAY OF _____ 202____

- (A) THE RECORD TITLE TO THE LAND AS DESCRIBED AND SHOWN HEREON IS IN THE NAME OF PULTE HOME COMPANY, LLC, A MICHIGAN LIMITED LIABILITY COMPANY, THE ENTITY EXECUTING THE DEDICATION.
- (B) THERE ARE NO MORTGAGES OF RECORD ENCUMBERING THE LAND DESCRIBED HEREIN.
- (C) PURSUANT TO FLORIDA STATUTES SECTION 197.192, ALL TAXES HAVE BEEN PAID THROUGH THE YEAR 2020.
- (D) ALL ASSESSMENTS CURRENTLY DUE AND PAYABLE AND OTHER ITEMS HELD AGAINST SAID LAND HAVE BEEN SATISFIED.
- (E) THERE ARE ENCUMBRANCES OF RECORD, BUT THOSE ENCUMBRANCES DO NOT PROHIBIT THE CREATION OF THE SUBDIVISION DEPICTED BY THIS PLAT.

STEVEN R. PARSON, PARTNER
FLORIDA BAR NO. 351903
SHUTTS & BOWEN LLP
525 OKEECHOBEE BLVD., SUITE 1100
WEST PALM BEACH, FL 33401

SURVEYOR'S NOTES:

- 1) BEARINGS SHOWN HEREON ARE RELATIVE TO A RECORD PLAT BEARING OF N.00°05'34"E, ALONG THE WEST LINE OF PARCEL A, PULTE AT TRADITION PHASE 1, AS RECORDED IN PLAT BOOK 79, PAGE 25 OF THE PUBLIC RECORDS OF ST. LUCIE COUNTY, FLORIDA.
- 2) ALL LINES INTERSECTING CIRCULAR CURVES ARE RADIAL UNLESS NOTED. (NR) DENOTES NON-RADIAL.
- 3) NOTE: THIS PLAT HAS BEEN REVIEWED FOR CONFORMITY TO CHAPTER 177, PART 1 FLORIDA STATUTES BY A PROFESSIONAL SURVEYOR AND MAPPER EMPLOYED BY OR UNDER CONTRACT WITH THE CITY OF PORT ST. LUCIE.
- 4) AS PER FLORIDA STATUTES 177, THE UNDERLYING/PREVIOUSLY RECORDED ITEMS IN HERON PRESERVE AT TRADITION PHASE 2A, AS RECORDED IN PLAT BOOK 98, PAGE 32 OF THE PUBLIC RECORDS OF ST. LUCIE COUNTY, FLORIDA LYING WITHIN THIS REPLAT, SUCH AS EASEMENTS, TRACTS, PARCELS AND RIGHTS-OF-WAYS WILL BE VACATED BY VIRTUE OF THIS RE-PLAT.
- 5) "NOTICE" THIS PLAT, AS RECORDED IN ITS GRAPHIC FORM, IS THE OFFICIAL DEPICTION OF THE SUBDIVIDED LANDS DESCRIBED HEREIN AND WILL IN NO CIRCUMSTANCES BE SUPPLANTED IN AUTHORITY BY ANY OTHER GRAPHIC OR DIGITAL FORM OF THE PLAT. THERE MAY BE ADDITIONAL RESTRICTIONS THAT ARE NOT RECORDED ON THIS PLAT THAT MAY BE FOUND IN THE PUBLIC RECORDS OF ST. LUCIE COUNTY.

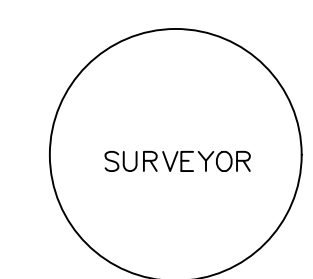
SURVEYOR'S CERTIFICATE:

STATE OF FLORIDA
COUNTY OF ST. LUCIE

THIS IS TO CERTIFY THAT THE PLAT AS SHOWN HEREON IS A TRUE AND CORRECT REPRESENTATION OF A SURVEY MADE UNDER MY RESPONSIBLE DIRECTION AND SUPERVISION AND THAT SAID SURVEY IS ACCURATE TO THE BEST OF MY KNOWLEDGE AND BELIEF AND THAT PERMANENT REFERENCE MONUMENTS (P.R.M.'S) HAVE BEEN SET AND THAT PERMANENT CONTROL POINTS (P.C.P.'S) AND LOT CORNERS WILL BE SET UNDER THE GUARANTEES POSTED WITH THE CITY COUNCIL OF PORT ST. LUCIE FOR THE REQUIRED IMPROVEMENTS, AND FURTHER, THAT THE SURVEYING DATA COMPLIES WITH ALL OF THE REQUIREMENTS OF CHAPTER 177, FLORIDA STATUTES, AS AMENDED, AND IN ACCORDANCE WITH THE SURVEYING STANDARDS CONTAINED WITHIN CHAPTER SJ-17, FLORIDA ADMINISTRATIVE CODE, SET FORTH BY THE FLORIDA BOARD OF SURVEYORS AND MAPPERS PURSUANT TO SECTION 472.027, FLORIDA STATUTES, AND ORDINANCES OF THE CITY OF PORT ST. LUCIE, FLORIDA. THIS _____ DAY OF _____ 202____

DAVID P. LINDLEY
PROFESSIONAL LAND SURVEYOR
FLORIDA REGISTRATION NO. 5005

PREPARED IN THE OFFICE OF:
CAULFIELD & WHEELER, INC.
7900 GLADES ROAD SUITE 100
BOCA RATON, FLORIDA 33434
CERTIFICATION NO. LB 3591



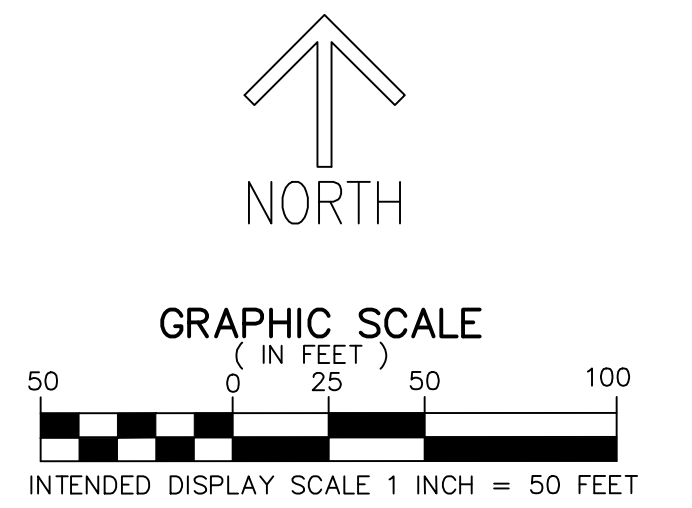
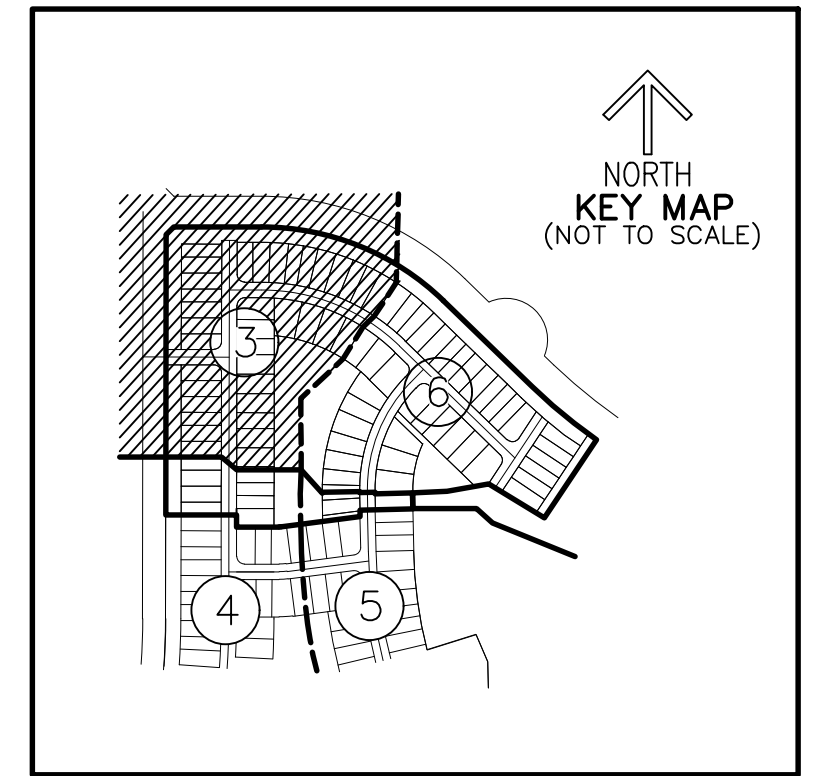
THIS INSTRUMENT PREPARED BY
 DAVID P. LINDLEY
 OF
CAULFIELD & WHEELER, INC.
 SURVEYORS - ENGINEERS - PLANNERS
 7900 GLADES ROAD, SUITE 100
 BOCA RATON, FLORIDA 33434 - (561)392-1991
 CERTIFICATE OF AUTHORIZATION NO. LB3591

HERON PRESERVE AT TRADITION PHASE 2B

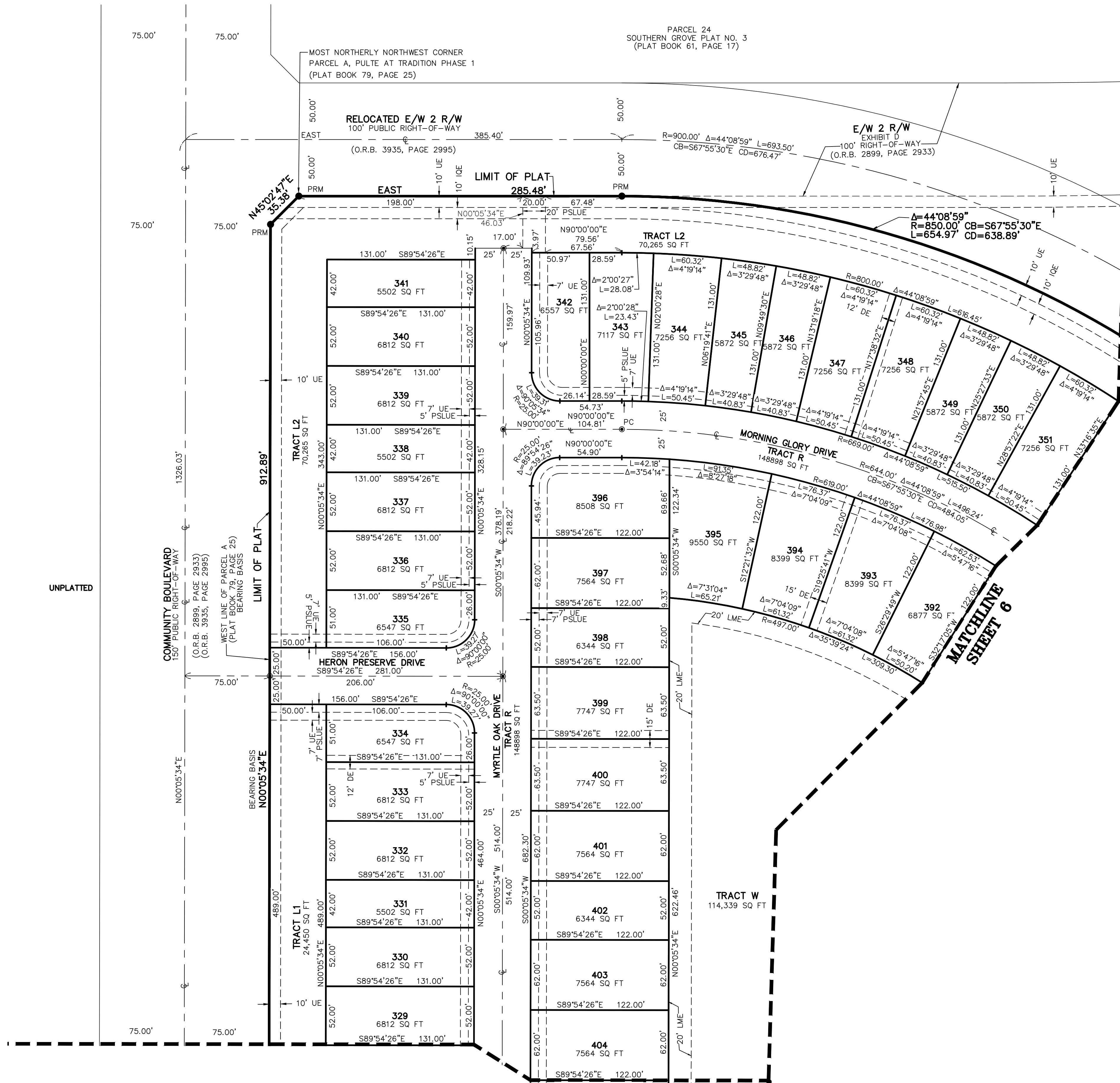
BEING A REPLAT OF PARCEL 2B, HERON PRESERVE AT TRADITION PHASE 2A,
 AS RECORDED IN PLAT BOOK 98, PAGE 32 OF THE PUBLIC RECORDS OF ST. LUCIE COUNTY, FLORIDA,
 LYING IN SECTION 22, TOWNSHIP 37 SOUTH, RANGE 39 EAST, CITY OF PORT ST. LUCIE, ST. LUCIE COUNTY, FLORIDA.

PLAT BOOK _____
 PAGE _____

SHEET 3 OF 6



- LEGEND/ABBREVIATIONS**
- ⊙ - CENTERLINE
 - Δ - DELTA (CENTRAL ANGLE)
 - AE - AERIAL EASEMENT
 - CB - CHORD BEARING
 - CD - CHORD DISTANCE
 - DE - DRAINAGE EASEMENT
 - EIEE - EMERGENCY INGRESS/EGRESS EASEMENT
 - GE - GATE EASEMENT
 - IQE - IRRIGATION EASEMENT
 - L - ARC LENGTH
 - LB - LICENSED BUSINESS
 - LME - LAKE MAINTENANCE EASEMENT
 - LSE - LIFT STATION EASEMENT
 - MPPPE - MULTI PURPOSE PATHWAY EASEMENT
 - (NR) - NON-RADIAL LINE
 - O.R.B. - OFFICIAL RECORD BOOK
 - P.B. - PLAT BOOK
 - PC - POINT OF CURVATURE
 - PG - PAGE
 - - PRM - PERMANENT REFERENCE MONUMENT SET 5/8" IRON ROD WITH CAP STAMPED "C&W PRM LB3591"
 - PSLUE - PRIVATE UTILITY EASEMENT
 - PT - POINT OF TANGENCY
 - R - RADIUS
 - (R) - DIRECTION OF RADIAL LINE
 - UE - PUBLIC UTILITY EASEMENT
 - WLE - WILDLIFE EASEMENT
 - WWE/IQE - WATER MANAGEMENT EASEMENT AND IRRIGATION EASEMENT
 - WMAE/IQE - WATER MANAGEMENT ACCESS AND IRRIGATION EASEMENT
 - ⊙ - DENOTES PERMANENT CONTROL POINT
 - - DENOTES 4"x 4" CONCRETE MONUMENT



MATCHLINE SHEET 4

CITY OF PORT ST. LUCIE
 PROJECT NO. P21-137
 PLSUSD #5308D

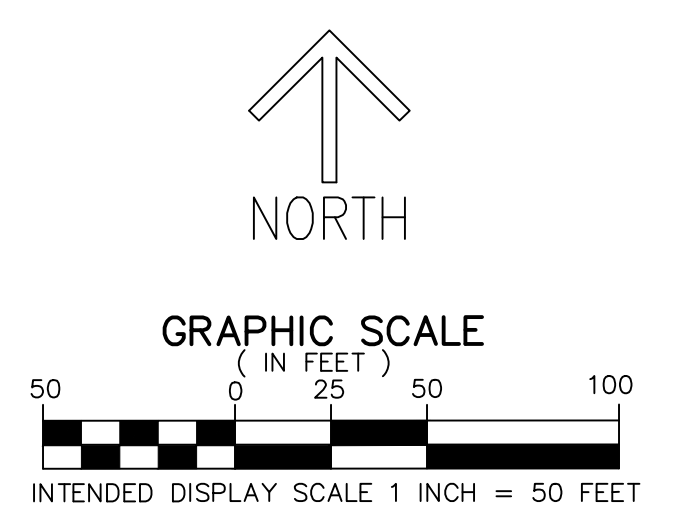
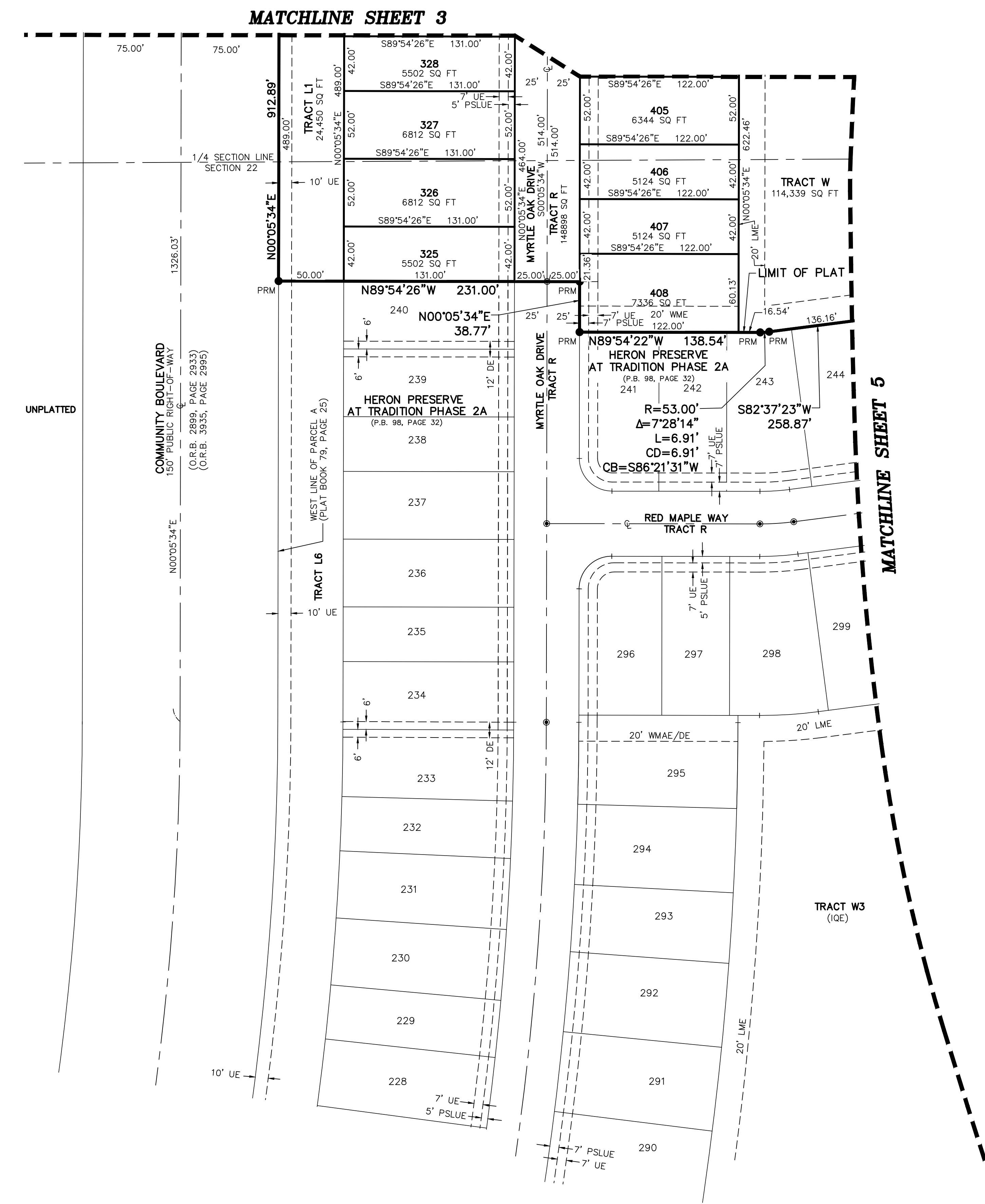
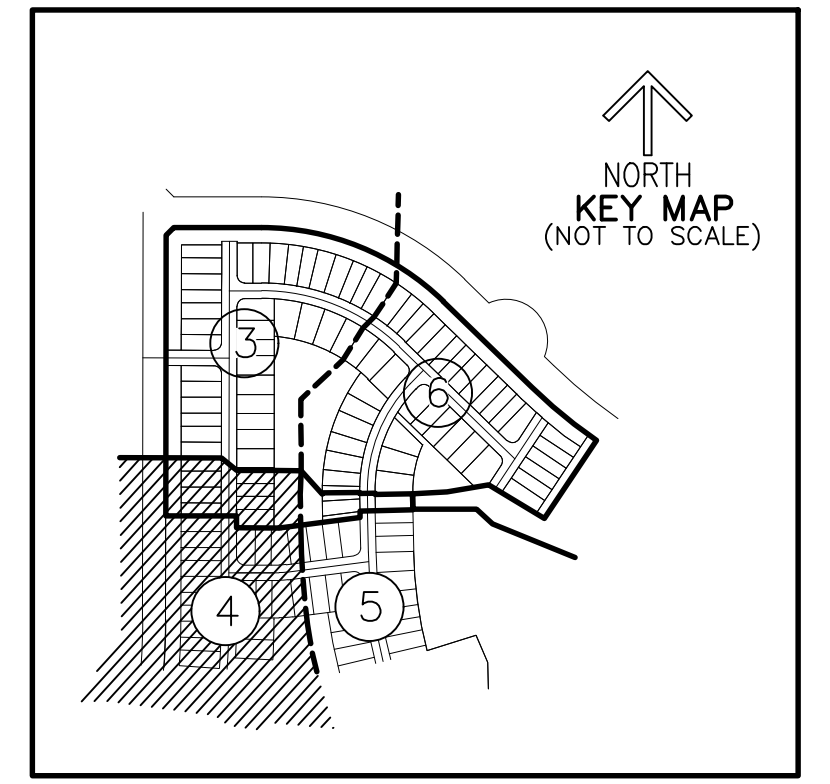
THIS INSTRUMENT PREPARED BY
 DAVID P. LINDLEY
 OF
CAULFIELD & WHEELER, INC.
 SURVEYORS - ENGINEERS - PLANNERS
 7900 GLADES ROAD, SUITE 100
 BOCA RATON, FLORIDA 33434 - (561)392-1991
 CERTIFICATE OF AUTHORIZATION NO. LB3591

HERON PRESERVE AT TRADITION PHASE 2B

BEING A REPLAT OF PARCEL 2B, HERON PRESERVE AT TRADITION PHASE 2A,
 AS RECORDED IN PLAT BOOK 98, PAGE 32 OF THE PUBLIC RECORDS OF ST. LUCIE COUNTY, FLORIDA,
 LYING IN SECTION 22, TOWNSHIP 37 SOUTH, RANGE 39 EAST, CITY OF PORT ST. LUCIE, ST. LUCIE COUNTY, FLORIDA.

PLAT BOOK _____
 PAGE _____

SHEET 4 OF 6



- LEGEND/ABBREVIATIONS**
- CL - CENTERLINE
 - Δ - DELTA (CENTRAL ANGLE)
 - AE - AERIAL EASEMENT
 - CB - CHORD BEARING
 - CD - CHORD DISTANCE
 - DE - DRAINAGE EASEMENT
 - EIEE - EMERGENCY INGRESS/EGRESS EASEMENT
 - GE - GATE EASEMENT
 - IQE - IRRIGATION EASEMENT
 - L - ARC LENGTH
 - LB - LICENSED BUSINESS
 - LME - LAKE MAINTENANCE EASEMENT
 - LSE - LIFT STATION EASEMENT
 - MPPPE - MULTI PURPOSE PATHWAY EASEMENT
 - (NR) - NON-RADIAL LINE
 - O.R.B. - OFFICIAL RECORD BOOK
 - P.B. - PLAT BOOK
 - PC - POINT OF CURVATURE
 - PG. - PAGE
 - PRM - PERMANENT REFERENCE MONUMENT
SET 5/8" IRON ROD WITH CAP
STAMPED "C&W PRM LB3591"
 - PSLUE - PRIVATE UTILITY EASEMENT
 - PT - POINT OF TANGENCY
 - R - RADIUS
 - (R) - DIRECTION OF RADIAL LINE
 - UE - PUBLIC UTILITY EASEMENT
 - WLE - WILDLIFE EASEMENT
 - WME/IQE - WATER MANAGEMENT EASEMENT
AND IRRIGATION EASEMENT
 - WMAE/IQE - WATER MANAGEMENT ACCESS
AND IRRIGATION EASEMENT
 - - DENOTES PERMANENT CONTROL POINT
 - - DENOTES 4" x 4" CONCRETE MONUMENT

THIS INSTRUMENT PREPARED BY
 DAVID P. LINDLEY
 OF
CAULFIELD & WHEELER, INC.
 SURVEYORS - ENGINEERS - PLANNERS
 7900 GLADES ROAD, SUITE 100
 BOCA RATON, FLORIDA 33434 - (561)392-1991
 CERTIFICATE OF AUTHORIZATION NO. LB3591

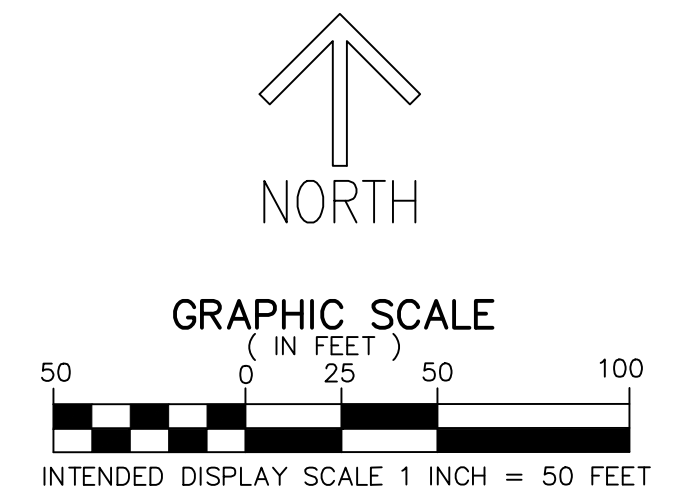
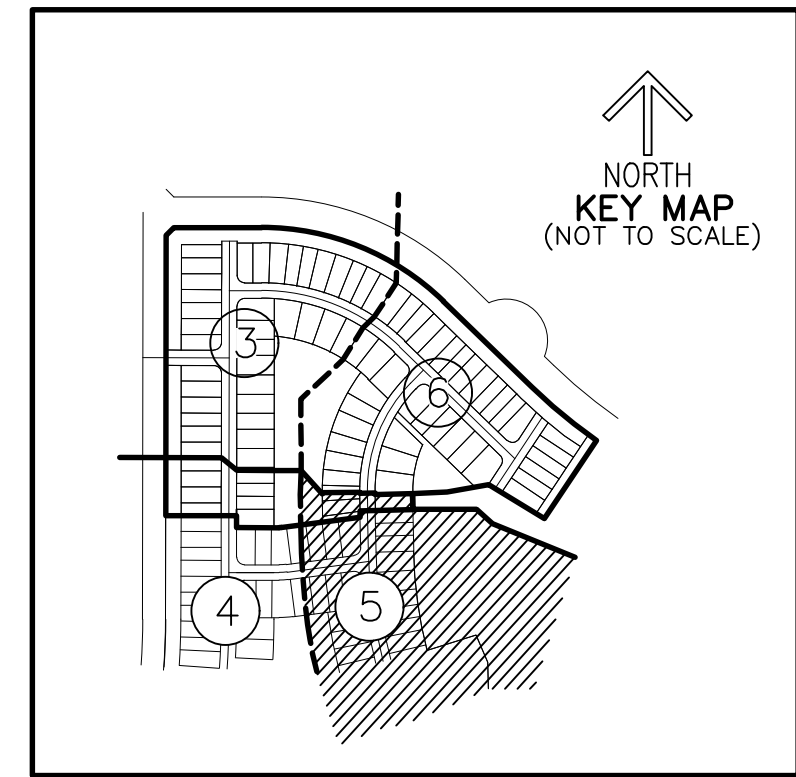
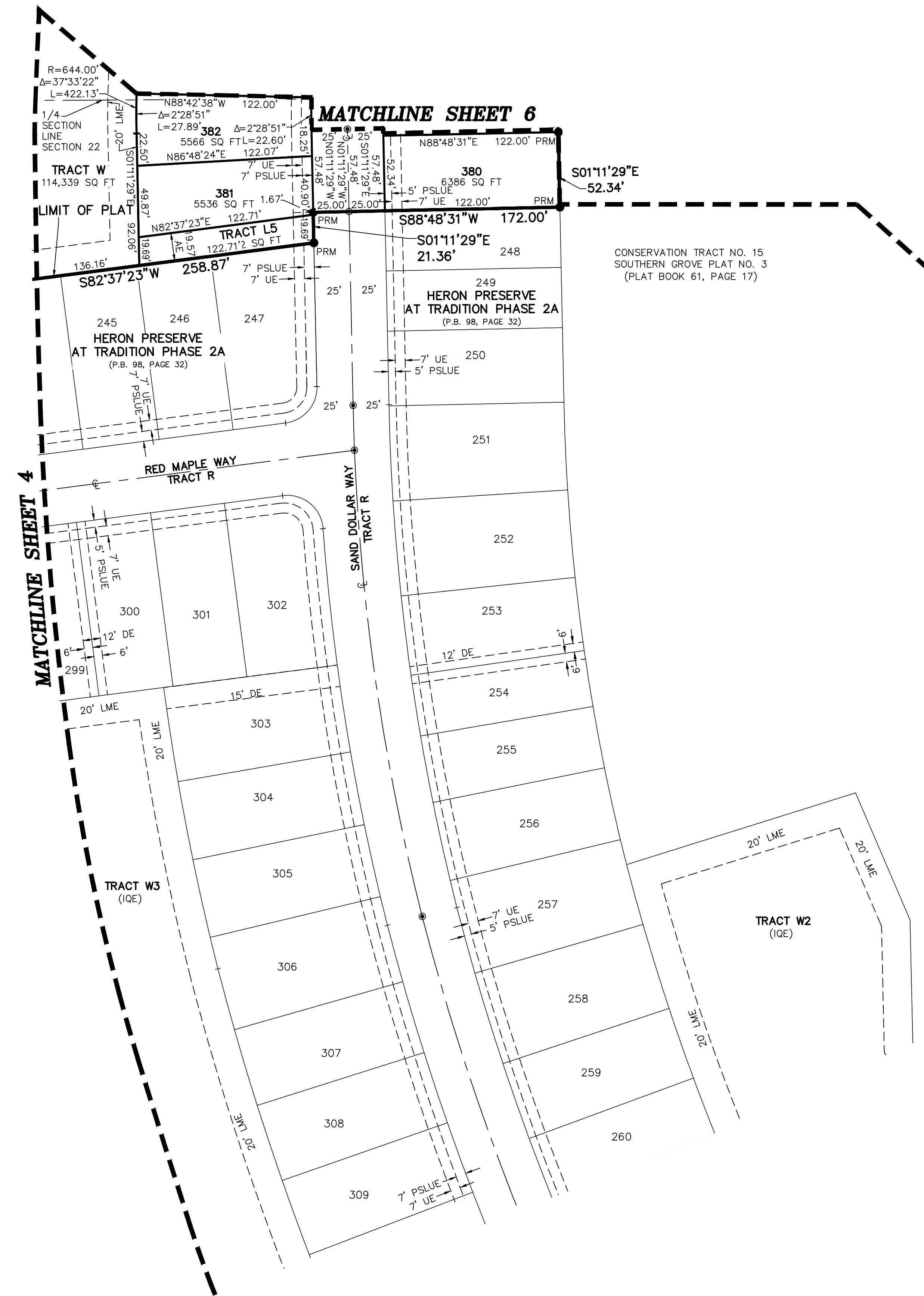
HERON PRESERVE AT TRADITION PHASE 2B

BEING A REPLAT OF PARCEL 2B, HERON PRESERVE AT TRADITION PHASE 2A,
 AS RECORDED IN PLAT BOOK 98, PAGE 32 OF THE PUBLIC RECORDS OF ST. LUCIE COUNTY, FLORIDA,
 LYING IN SECTION 22, TOWNSHIP 37 SOUTH, RANGE 39 EAST, CITY OF PORT ST. LUCIE, ST. LUCIE COUNTY, FLORIDA.

PLAT BOOK _____

PAGE _____

SHEET 5 OF 6



- LEGEND/ABBREVIATIONS**
- CL - CENTERLINE
 - Δ - DELTA (CENTRAL ANGLE)
 - AE - AERIAL EASEMENT
 - CB - CHORD BEARING
 - CD - CHORD DISTANCE
 - DE - DRAINAGE EASEMENT
 - EIEE - EMERGENCY INGRESS/EGRESS EASEMENT
 - GE - GATE EASEMENT
 - IOE - IRRIGATION EASEMENT
 - L - ARC LENGTH
 - LB - LICENSED BUSINESS
 - LME - LAKE MAINTENANCE EASEMENT
 - LSE - LIFT STATION EASEMENT
 - MPPE - MULTI PURPOSE PATHWAY EASEMENT
 - (NR) - NON-RADIAL LINE
 - O.R.B. - OFFICIAL RECORD BOOK
 - P.B. - PLAT BOOK
 - PC - POINT OF CURVATURE
 - PG. - PAGE
 - PRM - PERMANENT REFERENCE MONUMENT
SET 5/8" IRON ROD WITH CAP
STAMPED "C&W PRM LB3591"
 - PSLUE - PRIVATE UTILITY EASEMENT
 - PT - POINT OF TANGENCY
 - R - RADIUS
 - (R) - DIRECTION OF RADIAL LINE
 - UE - PUBLIC UTILITY EASEMENT
 - WLE - WILDLIFE EASEMENT
 - WME/IOE - WATER MANAGEMENT EASEMENT
AND IRRIGATION EASEMENT
 - WMAE/IOE - WATER MANAGEMENT ACCESS
AND IRRIGATION EASEMENT
 - - DENOTES PERMANENT CONTROL POINT
 - - DENOTES 4"x 4" CONCRETE MONUMENT

THIS INSTRUMENT PREPARED BY
 DAVID P. LINDLEY
 OF
CAULFIELD & WHEELER, INC.
 SURVEYORS - ENGINEERS - PLANNERS
 7900 GLADES ROAD, SUITE 100
 BOCA RATON, FLORIDA 33434 - (561)392-1991
 CERTIFICATE OF AUTHORIZATION NO. LB3591

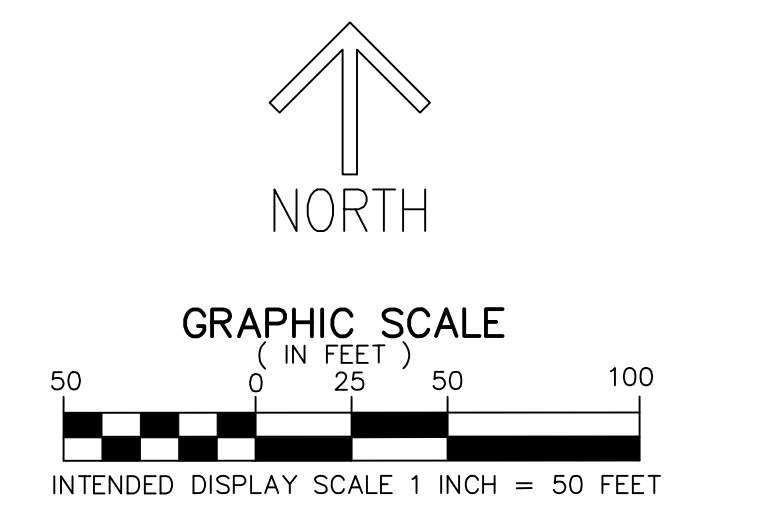
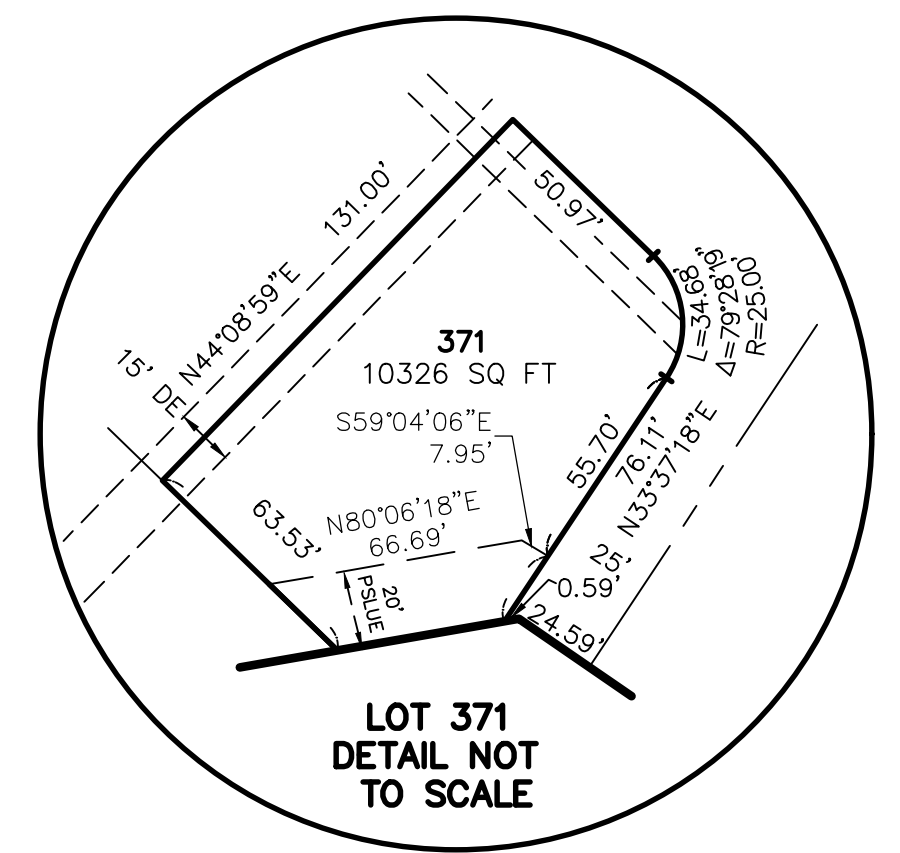
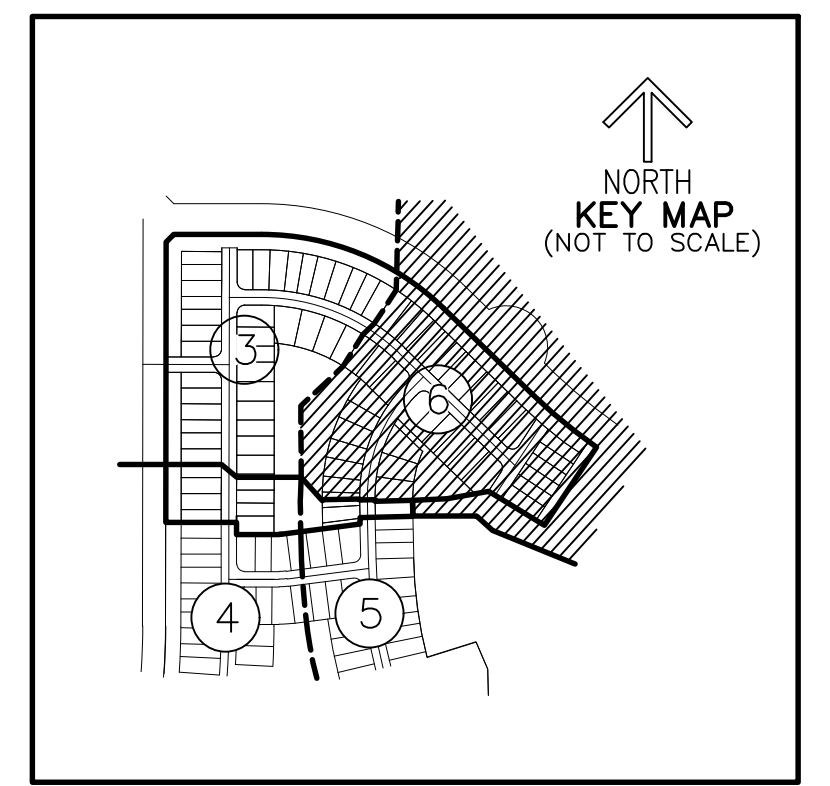
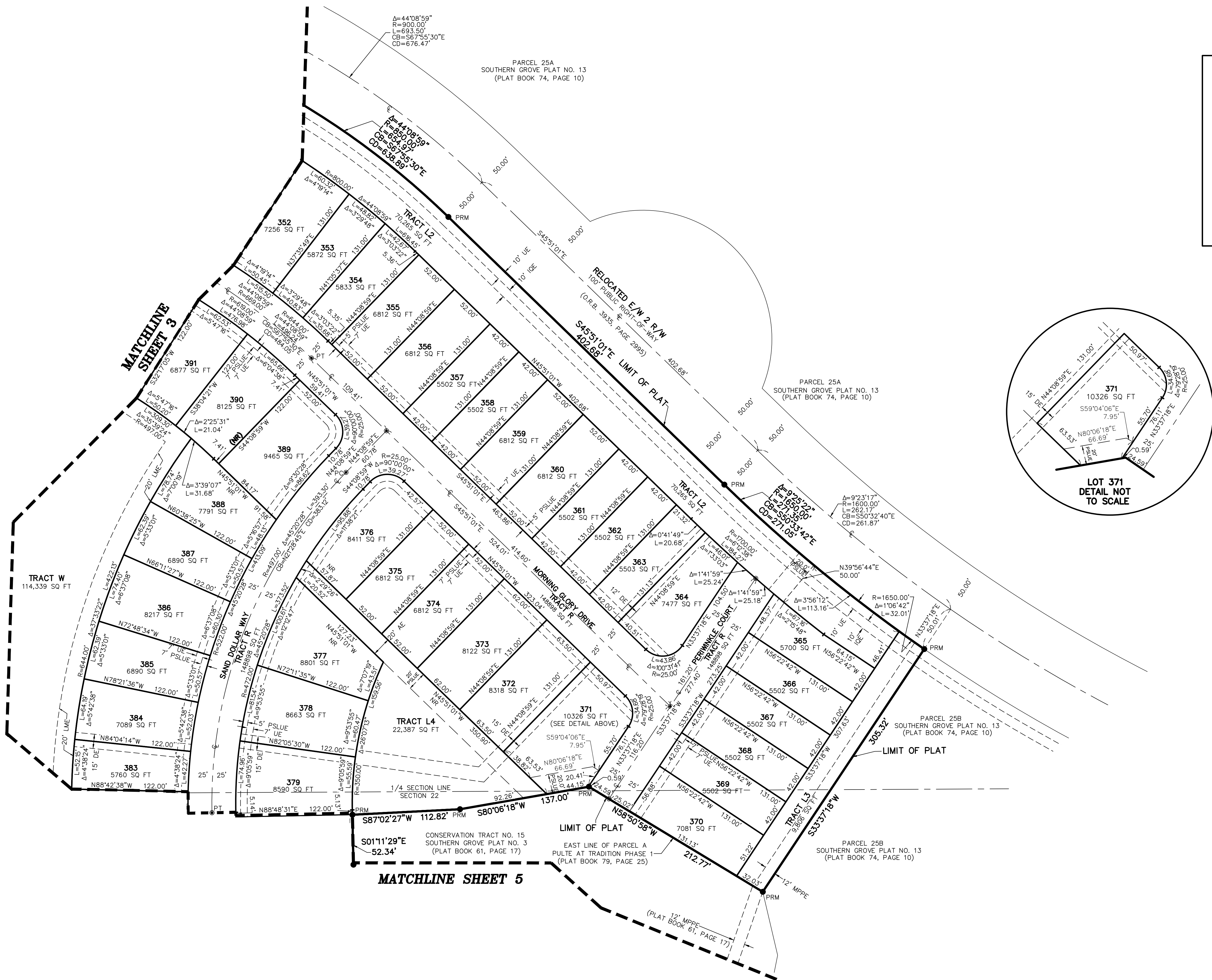
HERON PRESERVE AT TRADITION PHASE 2B

BEING A REPLAT OF PARCEL 2B, HERON PRESERVE AT TRADITION PHASE 2A,
 AS RECORDED IN PLAT BOOK 98, PAGE 32 OF THE PUBLIC RECORDS OF ST. LUCIE COUNTY, FLORIDA,
 LYING IN SECTION 22, TOWNSHIP 37 SOUTH, RANGE 39 EAST, CITY OF PORT ST. LUCIE, ST. LUCIE COUNTY, FLORIDA.

PLAT BOOK _____

PAGE _____

SHEET 6 OF 6



- LEGEND/ABBREVIATIONS**
- CL - CENTERLINE
 - Δ - DELTA (CENTRAL ANGLE)
 - AE - AERIAL EASEMENT
 - CB - CHORD BEARING
 - CD - CHORD DISTANCE
 - DE - DRAINAGE EASEMENT
 - EIEE - EMERGENCY INGRESS/EGRESS EASEMENT
 - GE - GATE EASEMENT
 - IOE - IRRIGATION EASEMENT
 - L - ARC LENGTH
 - LB - LICENSED BUSINESS
 - LME - LAKE MAINTENANCE EASEMENT
 - LSE - LIFT STATION EASEMENT
 - MPPE - MULTI PURPOSE PATHWAY EASEMENT
 - (NR) - NON-RADIAL LINE
 - O.R.B. - OFFICIAL RECORD BOOK
 - P.B. - PLAT BOOK
 - PC - POINT OF CURVATURE
 - PG. - PAGE
 - PRM - PERMANENT REFERENCE MONUMENT SET 5/8" IRON ROD WITH CAP STAMPED "C&W PRM LB3591"
 - PSLUE - PRIVATE UTILITY EASEMENT
 - PT - POINT OF TANGENCY
 - R - RADIUS
 - (R) - DIRECTION OF RADIAL LINE
 - UE - PUBLIC UTILITY EASEMENT
 - WLE - WILDLIFE EASEMENT
 - WME/IOE - WATER MANAGEMENT EASEMENT AND IRRIGATION EASEMENT
 - WMAE/IOE - WATER MANAGEMENT ACCESS AND IRRIGATION EASEMENT
 - - DENOTES PERMANENT CONTROL POINT
 - - DENOTES 4"x 4" CONCRETE MONUMENT

CITY OF PORT ST. LUCIE
 PROJECT NO. P21-137
 PLSUSD #5308D