

LEGEND

- RESIDENTIAL**
INCLUDING NEIGHBORHOODS OF HOUSING, WHICH NEIGHBORHOOD MAY ALSO CONTAIN SCHOOLS, PARKS, PLACES OF WORSHIP AND CIVIC FACILITIES ESSENTIAL TO THE DAILY LIFE OF THE RESIDENTS
- MIXED USE**
INCLUDING COMMERCIAL AND OFFICE USES, HOSPITAL AND MEDICAL USES, RESTAURANTS, THEATERS, HOTELS, INSTITUTIONAL USES, PUBLIC FACILITIES (INCLUDING UTILITIES), LIGHT INDUSTRIAL, WAREHOUSE/DISTRIBUTION, RESIDENTIAL AND OTHER SIMILAR SERVICES
- NEIGHBORHOOD / VILLAGE COMMERCIAL**
INCLUDING COMMERCIAL AND OFFICE USES, PERSONAL AND HOUSEHOLD SERVICE ESTABLISHMENTS, INSTITUTIONAL USES, PUBLIC FACILITIES, PARKS, PLAYGROUNDS, AND OTHER SIMILAR SERVICES
- LAKES**

PROPOSED LAND USES

RESIDENTIAL *(INCLUDES ROW ACREAGE)	1876 AC
MIXED-USE *(INCLUDES FPL ACREAGE)	96 AC
NEIGHBORHOOD / VILLAGE COMMERCIAL	30 AC
MIXED-USE *(INCLUDES FPL ACREAGE)	57 AC
MIXED-USE *(INCLUDES FPL ACREAGE)	566 AC
MIXED-USE *(INCLUDES FPL ACREAGE)	15 AC
TOTAL AREA	2,499 AC

*PROPOSED ACREAGES OF SUBDISTRICTS HAVE BEEN ROUNDED TO THE NEAREST +/- 1 ACRE.

NOTES

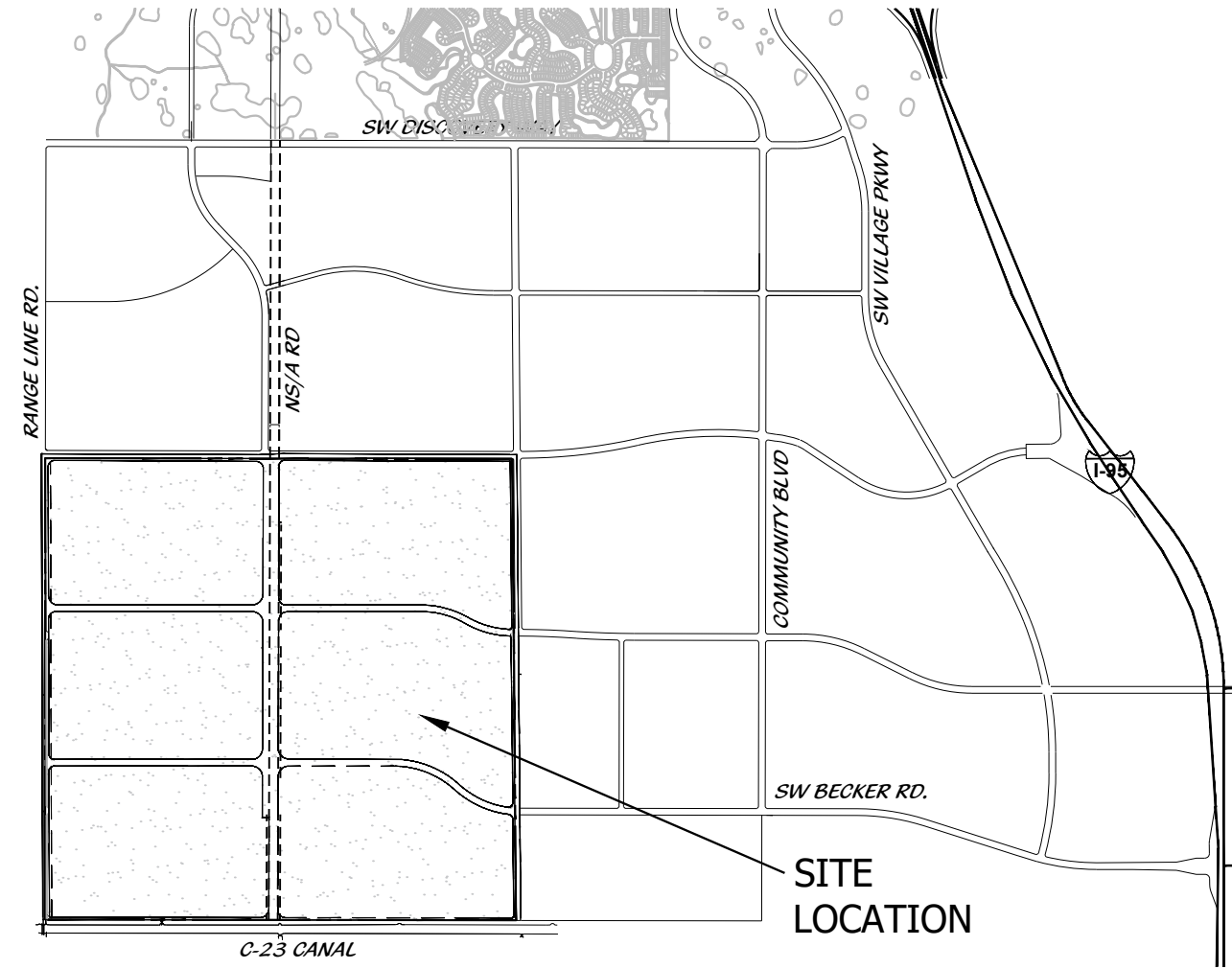
*LOCATION AND CONFIGURATION OF ALL DEVELOPMENT PARCELS INCLUDING ACCESS LOCATIONS, LAKES, OPEN SPACE, RESIDENTIAL AND NON-RESIDENTIAL USES WILL BE FULLY DELINEATED DURING THE ZONING AND OR PLATTING PROCESS.

PER CONDITION 56 OF RESOLUTION 11-R01, 40 ACRES OF PARK IS REQUIRED. EXACT LOCATION AND CONFIGURATION OF PARKS TO BE DECIDED IN CONSULTATION WITH PARKS AND REC DEPARTMENT.

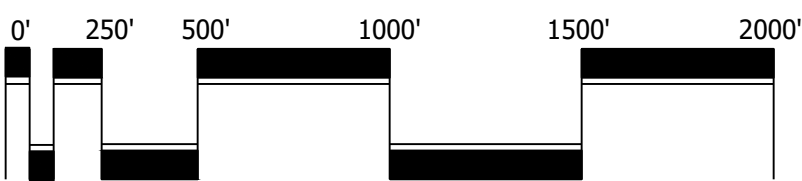
50-ACRE REGIONAL PARK SITE TO BE PROVIDED ADJACENT TO C-23 CANAL AND EAST PROPERTY LINE.

THIS MAP IS AN ARTIST'S ILLUSTRATION OF THE GENERALIZED CONCEPT WHICH IS ONE OF MANY ALTERNATIVE SOLUTIONS WHICH SHARE A COMMON UNDERLYING DESIGN BASIS TO PROVIDE A FRAMEWORK WHICH RECOGNIZES THE REGIONAL IMPACTS WHICH THIS SCALE OF DEVELOPMENT MAY HAVE AND TO ACCOMMODATE SUCH IMPACTS WITHIN THE LIMITS OF THE LAW AND BALANCED DESIGN IMPERATIVES TO PROVIDE ECONOMICALLY VIABLE AND MARKET SENSITIVE SOLUTIONS TO MEET THE NEEDS OF OUR CUSTOMERS AND THE COMMUNITY THEY CREATE. THE PLANS FOR CONSTRUCTION MAY VARY AS THE NATURAL EVOLUTION OF THE SPECIFIC ENGINEERED SOLUTIONS ARE PROCESSED THROUGH THE VARIOUS DESIGN AND JURISDICTIONAL AUTHORITIES TO FINAL APPROVAL. NOTWITHSTANDING MARGINAL VARIATIONS IN DESIGN AS THE DETAILED ENGINEERING BECOME MORE REFINED, PRIOR APPROVALS SHALL ENTITLE THE APPLICANT WITHOUT RETURNING FOR REVISION REVIEW BY PRIOR AUTHORITY, TO CONTINUE SUBSEQUENT MORE LOCALIZED DECISIONS AS FUNCTIONAL DETAILS BECOME EVIDENT. THE PROPERTY OWNER AND/OR DEVELOPERS RESERVE ALL RIGHTS TO MAKE SUCH ADJUSTMENTS AS NEEDED TO ACCOMPLISH THESE FUNCTIONAL DESIGN ACCOMMODATIONS.

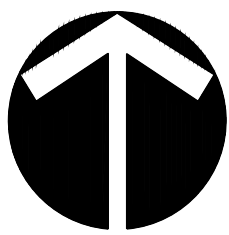
LOCATION MAP



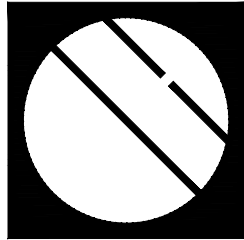
PSL# P23-183
CONCEPTUAL MASTER PLAN



Scale: 1" = 500'



North



Cotleur & Hearing

Landscape Architects
Land Planners
Environmental Consultants
1934 Commerce Lane
Suite 1
Jupiter, Florida 33458
561.747.6336 · Fax 747.1377
www.cotleurhearing.com
Lic# LC-C000239

WILSON GROVE

Port St. Lucie, Florida

DESIGNED	DTS
DRAWN	PRP
APPROVED	DTS
JOB NUMBER	20-0518
DATE	02-14-24
REVISIONS	

SHEET 1 OF 1

© COTLEUR & HEARING, INC.
These drawings are the property of the architect and are not to be used for extensions or on other projects except by agreement in writing with the architect. Immediately report any discrepancies to the architect.