

**PLANT SCHEDULE PHASE 2A**

TREES	CODE	QTY	BOTANICAL NAME	COMMON NAME	SPECS
	CE	159	Conocarpus erectus	Buttonwood	FG, 14' HT x 6' SPR, 3" C, SP, HO, 4" CT

**PLANT SCHEDULE PHASE 2A BUFFER**

TREES	CODE	QTY	BOTANICAL NAME	COMMON NAME	SPECS
	QV4	25	Quercus virginiana	Southern Live Oak	FG, 16'-18' HT, 8' SPR, 4" C, SP, HO
	SP	39	Sabal palmetto	Sabal Palm	FG, 10'-18' CT HT, HV CAL, SP, HC
SHRUBS	CODE	QTY	BOTANICAL NAME	COMMON NAME	SPECS
	CHR	915	Chrysobalanus icaco 'Red Tip'	Red Tip Cocoplum	3G, 24' HT, 18" W, F, Native

**GENERAL LANDSCAPE NOTES:**

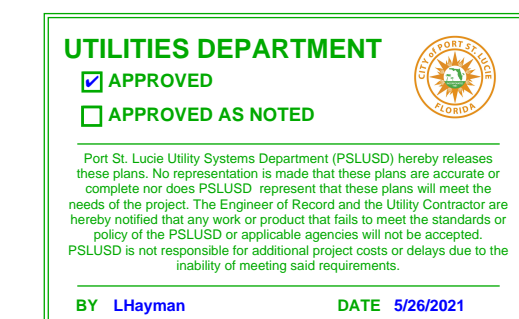
- At least 50% of all required trees shall be of a native species.
- All plant material to be Florida No. 1 or better.
- All landscape & sod areas to be irrigated by an automated system that provides 100% coverage with 100% overlap with a minimum d.u. of .70.
- All landscaping at intersection and corners complies with Section 158.204 of the Port St Lucie Code of Ordinances to provide a clear sight zone between 2' - 6' above the final road crown elevation. All hedges and shrubs with in the 25' sight triangle will be maintained at a height no higher than 2' above the crown elevation of the road. In addition, the foliage line any tree within the 25' sight triangle will maintained at a height of no less than 6' above the road crown.
- Street tree locations will occur within 5' Landscape Easement as shown on civil engineering plans and can be adjusted based on final utility, sidewalk and driveway locations.
- Where applicable, street trees requiring root barriers shall be installed per manufacturer specifications, see detail on sheet LA-48.
- Berm landscape to be field adjusted according to final grading and top of berm locations.
- Final cul-de-sac street tree locations to be determined on site.
- See Engineer's plans for all utility locations.

**PSLUSD NOTES FOR LANDSCAPE PLANS**

- All new landscaping within utility easements and within ten (10) feet of underground utility infrastructure shall comply with PSLUSD technical specifications, policies, and codes.
- No landscaping other than sod grasses may be planted within a 5' radius maintenance area of any utility appurtenances such as water meters, backflow devices, fire hydrants, sanitary sewer cleanouts, and manholes, air release valves, etc. Trees shall not be planted within ten (10) feet of any underground infrastructure.
- No landscaping shall be planted in such a manner as to adversely affect utility installation, operation and maintenance.

**Index of Drawings:**

Cover Sheet	CV
Plant Schedules	CV
Landscape Plans	LA-1 - LA7
Typical Buffer Landscape Plan	LA-8
Typical Lot Landscape Plans	LA-9
Landscape Details	LA-10
Landscape Specifications	LA-11



**STREET TREE DATA**

Required Street Tree Credits per PSL Code Section 156.121:	158
Proposed Trees 14'x6":	159
Conocarpus erectus 'Green Buttonwood' FG 14' HT x 6' SPR, 3" C, SP, HO	159

\*Location of street trees may vary due to the location of driveways.

**Key / Location:**



**Project Team:**

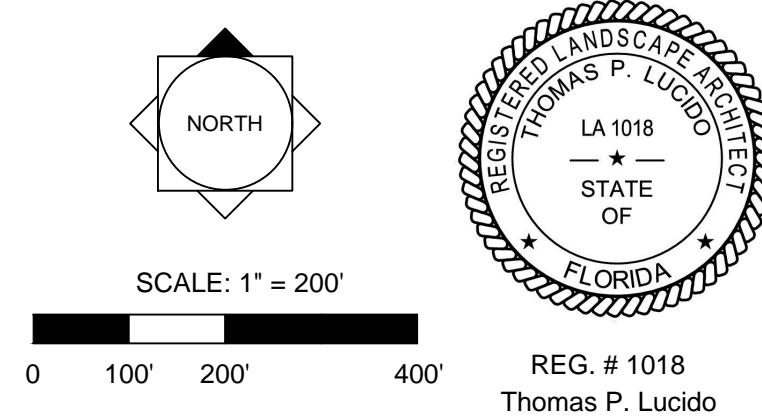
<b>Client &amp; Property Owner:</b>	Pulte Group 4400 PGA Blvd, Suite 700 Palm Beach Gardens, FL 33410 561-625-6905
<b>Landscape Architect:</b>	Lucido & Associates 701 E Ocean Boulevard Stuart, FL 34994
<b>Engineer:</b>	Kimley Horn 445 24th Street, Suite 200 Vero Beach, FL 32960

**Pulte at Tradition  
Phase 2A  
Landscape Plan**

Port St. Lucie, Florida  
Cover Sheet

City of Port St Lucie P19-121  
PSLUSD No. 5308B

Date	By	Description
8/19/20	SAW	Initial Submittal
10/21/20	SAW	Response to comments
12/2/20	SAW	Response to comments



Designer	JJ	Sheet	CV
Manager	SG		
Project Number	17-640		
Municipal Number	---		
Computer File			

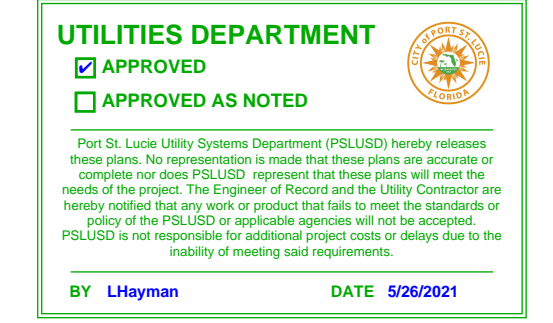


**Project Team:**

**Client & Property Owner:** Pulte Group  
 4400 PGA Blvd, Suite 700  
 Palm Beach Gardens, FL 33410  
 561-625-6905

**Landscape Architect:** Lucido & Associates  
 701 E Ocean Boulevard  
 Stuart, FL 34994

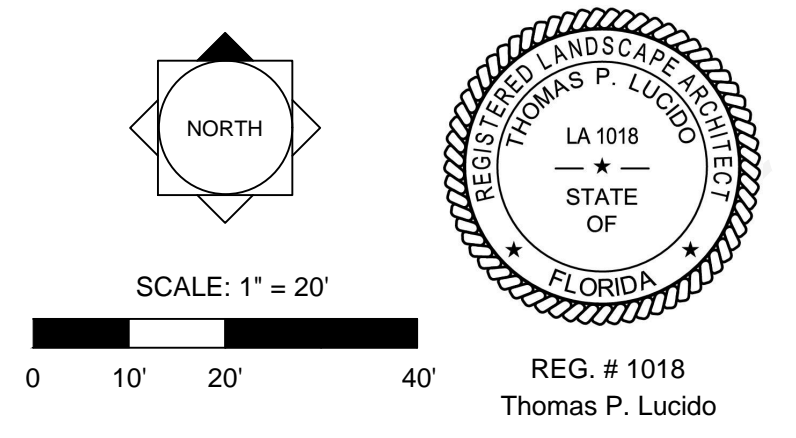
**Engineer:** Kimley Horn  
 445 24th Street, Suite 200  
 Vero Beach, FL 32960



## Pulte at Tradition Phase 2A Landscape Plan

Port St. Lucie, Florida  
 Landscape Plan  
 City of Port St Lucie P19-121  
 PSLUSD No. 5308B

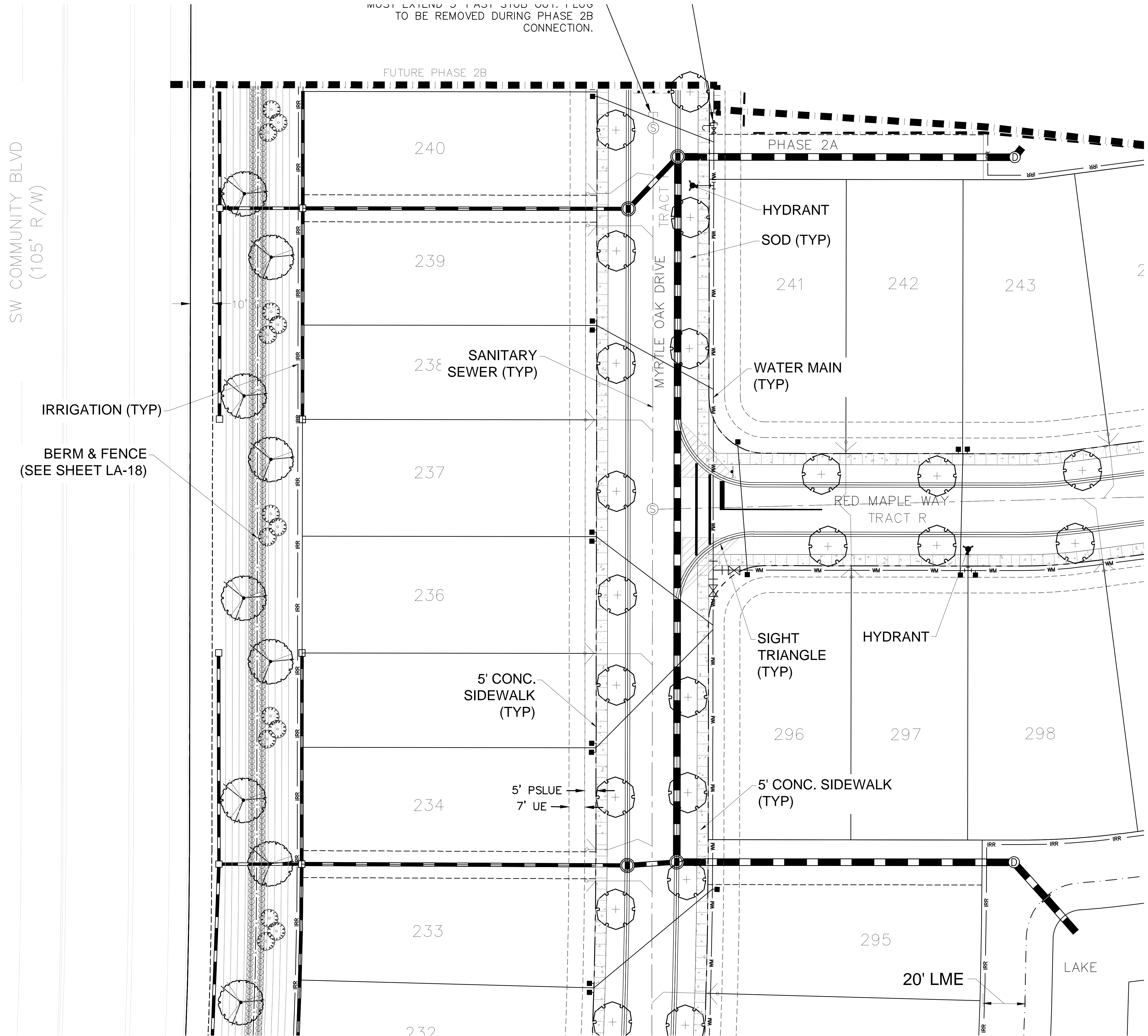
Date	By	Description
8/19/20	SAW	Initial Submittal
10/21/20	SAW	Response to comments
12/2/20	SAW	Response to comments



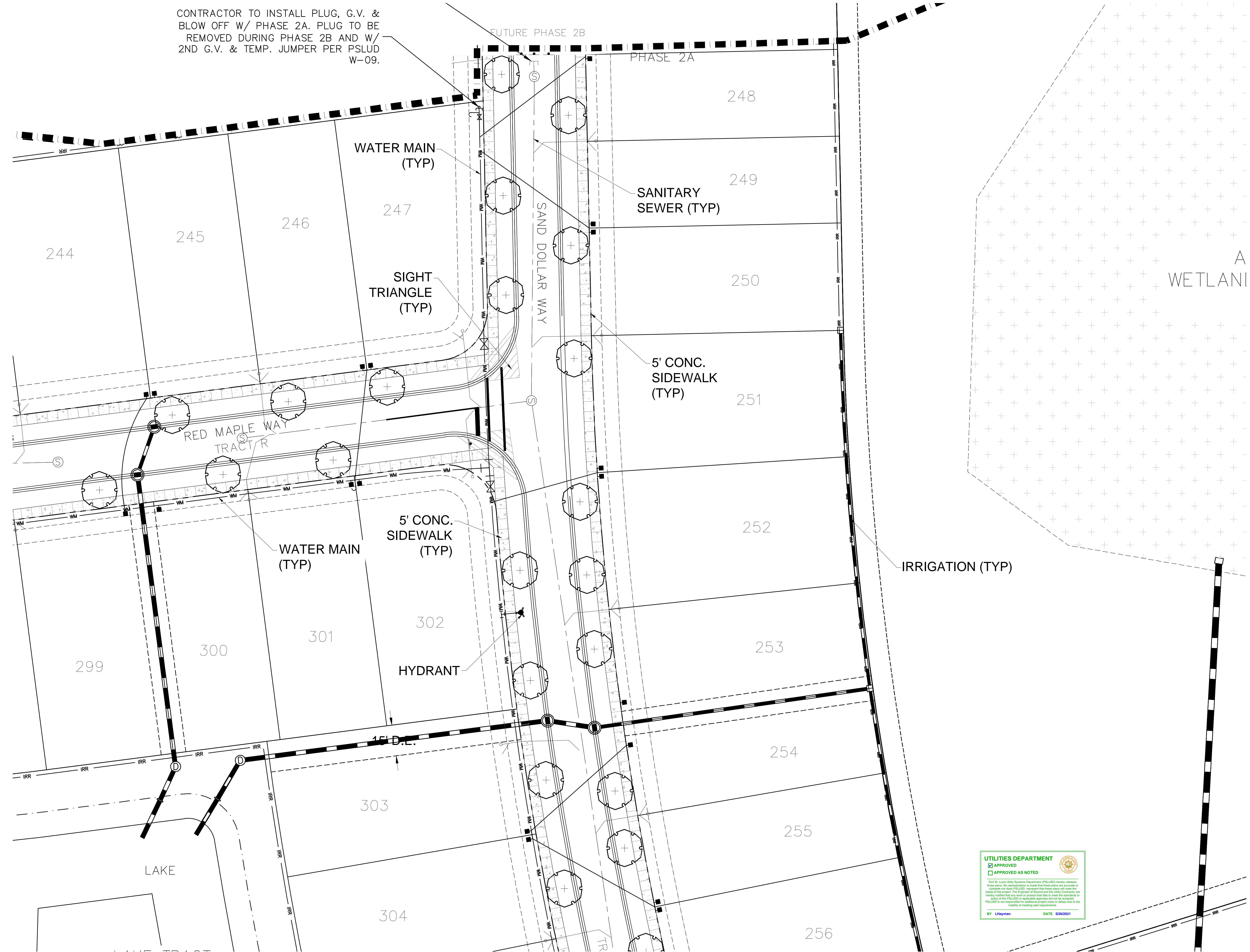
Designer JJ Sheet  
 Manager SG  
 Project Number 17-640  
 Municipal Number ---  
 Computer File

**LA-1**

© Copyright Lucido & Associates. These documents and their contents are the property of Lucido & Associates. Any reproductions, revisions, modifications or use of these documents without the express written consent of Lucido & Associates is prohibited by law.



CONTRACTOR TO INSTALL PLUG, G.V. & BLOW OFF W/ PHASE 2A. PLUG TO BE REMOVED DURING PHASE 2B AND W/ 2ND G.V. & TEMP. JUMPER PER PSLUD W-09.



**Key / Location:**

**PROJECT LOCATION**

N.T.S.

**Project Team:**

**Client & Property Owner:** Pulte Group  
 4400 PGA Blvd, Suite 700  
 Palm Beach Gardens, FL 33410  
 561-625-6905

**Landscape Architect:** Lucido & Associates  
 701 E Ocean Boulevard  
 Stuart, FL 34994

**Engineer:** Kimley Horn  
 445 24th Street, Suite 200  
 Vero Beach, FL 32960

# Pulte at Tradition Phase 2A Landscape Plan

Port St. Lucie, Florida

**Landscape Plan**  
 City of Port St Lucie P19-121  
 PSLUSD No. 5308B

Date	By	Description
8/19/20	SAW	Initial Submittal
10/21/20	SAW	Response to comments
12/2/20	SAW	Response to comments

**UTILITIES DEPARTMENT**

APPROVED  
 APPROVED AS NOTED

BY: L.Hayman DATE: 9/26/2021

**REGISTRATION SEAL:** THOMAS P. LUCIDO, LA 1018, STATE OF FLORIDA, REG. # 1018, Thomas P. Lucido

**SCALE:** 1" = 20'

**GRAPHIC SCALE:** 0, 10', 20', 40'

**ORIENTATION:** NORTH

Designer: JJ  
 Manager: SG  
 Project Number: 17-640  
 Municipal Number: ---  
 Computer File: ---

Sheet: **LA-2**

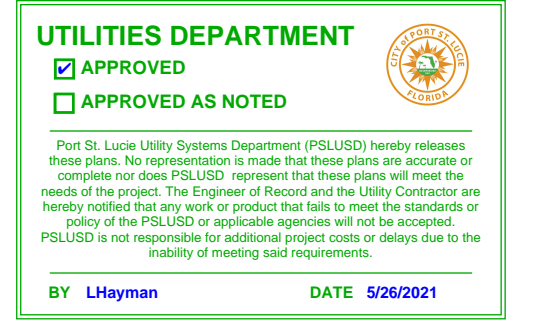


**Project Team:**

**Client & Property Owner:** Pulte Group  
 4400 PGA Blvd, Suite 700  
 Palm Beach Gardens, FL 33410  
 561-625-6905

**Landscape Architect:** Lucido & Associates  
 701 E Ocean Boulevard  
 Stuart, FL 34994

**Engineer:** Kimley Horn  
 445 24th Street, Suite 200  
 Vero Beach, FL 32960

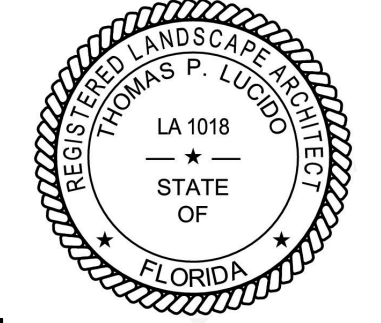
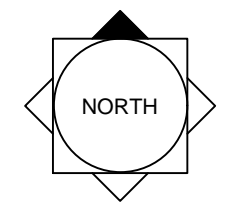


# Pulte at Tradition Phase 2A Landscape Plan

Port St. Lucie, Florida

**Landscape Plan**  
 City of Port St Lucie P19-121  
 PSLUSD No. 5308B

Date	By	Description
8/19/20	SAW	Initial Submittal
10/21/20	SAW	Response to comments
12/2/20	SAW	Response to comments



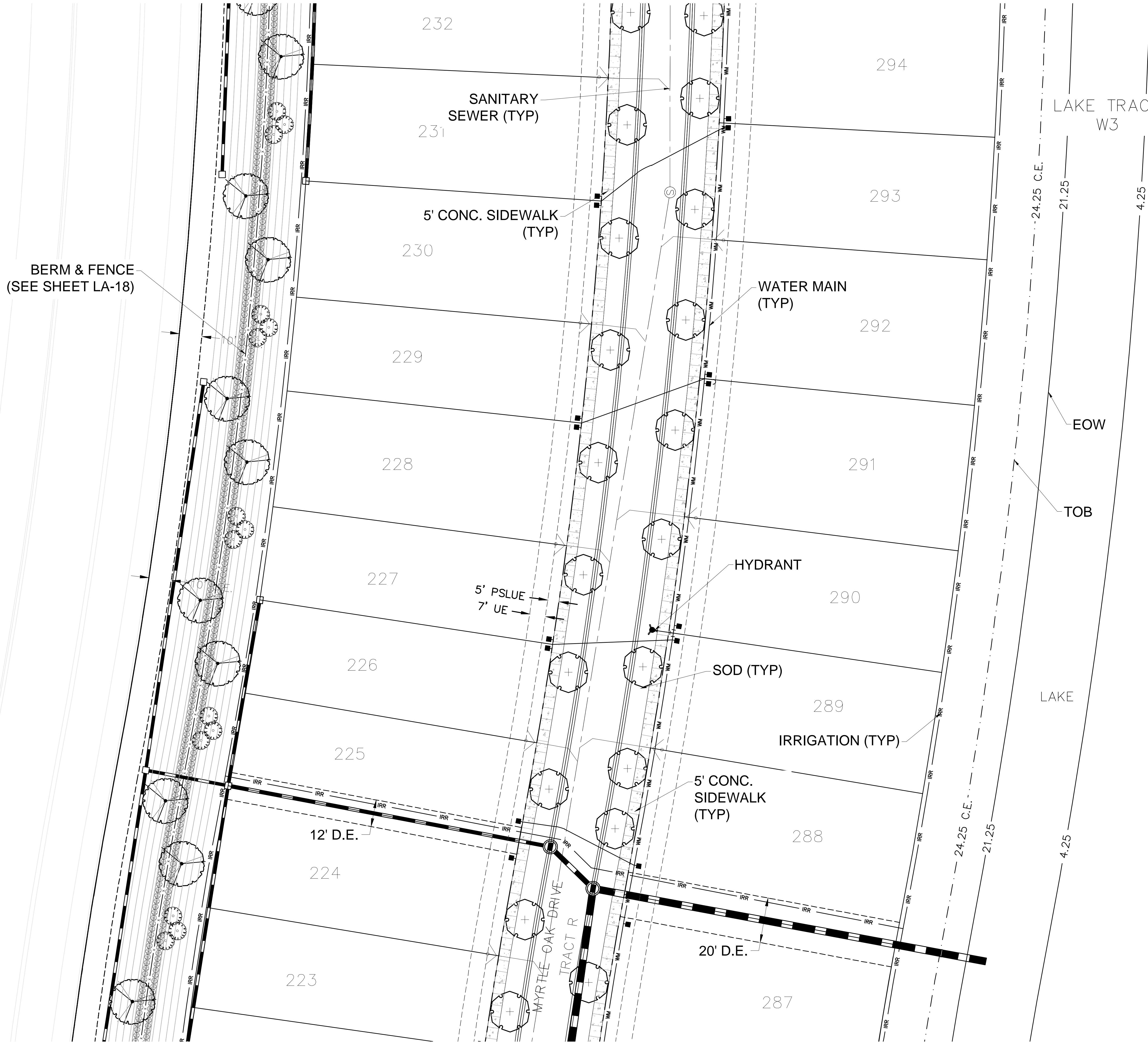
SCALE: 1" = 20'

REG. # 1018  
 Thomas P. Lucido

Designer JJ  
 Manager SG  
 Project Number 17-640  
 Municipal Number ---  
 Computer File

Sheet  
**LA-3**

© Copyright Lucido & Associates. These documents and their contents are the property of Lucido & Associates. Any reproductions, revisions, modifications or use of these documents without the express written consent of Lucido & Associates is prohibited by law.



**Key / Location:**

**PROJECT LOCATION**

N.T.S.

**Project Team:**

**Client & Property Owner:** Pulte Group  
 4400 PGA Blvd, Suite 700  
 Palm Beach Gardens, FL 33410  
 561-625-6905

**Landscape Architect:** Lucido & Associates  
 701 E Ocean Boulevard  
 Stuart, FL 34994

**Engineer:** Kimley Horn  
 445 24th Street, Suite 200  
 Vero Beach, FL 32960

**UTILITIES DEPARTMENT**

APPROVED  
 APPROVED AS NOTED

Port St. Lucie Utility Systems Department (PSLUSD) hereby releases these plans. No representation is made that these plans are accurate or complete. No other PSLUSD representative that these plans will meet the needs of the project. The Engineer of Record and the Utility Contractor are solely responsible for any work or product that fails to meet the standards or policy of the PSLUSD or applicable agencies. It will not be accepted. PSLUSD is not responsible for additional project costs or delays due to the inability of meeting said requirements.

BY: *L. Hayman* DATE: 5/26/2021

# Pulte at Tradition Phase 2A Landscape Plan

Port St. Lucie, Florida

**Landscape Plan**  
 City of Port St Lucie P19-121  
 PSLUSD No. 5308B

Date	By	Description
8/19/20	SAW	Initial Submittal
10/21/20	SAW	Response to comments
12/2/20	SAW	Response to comments

**SCALE: 1" = 20'**

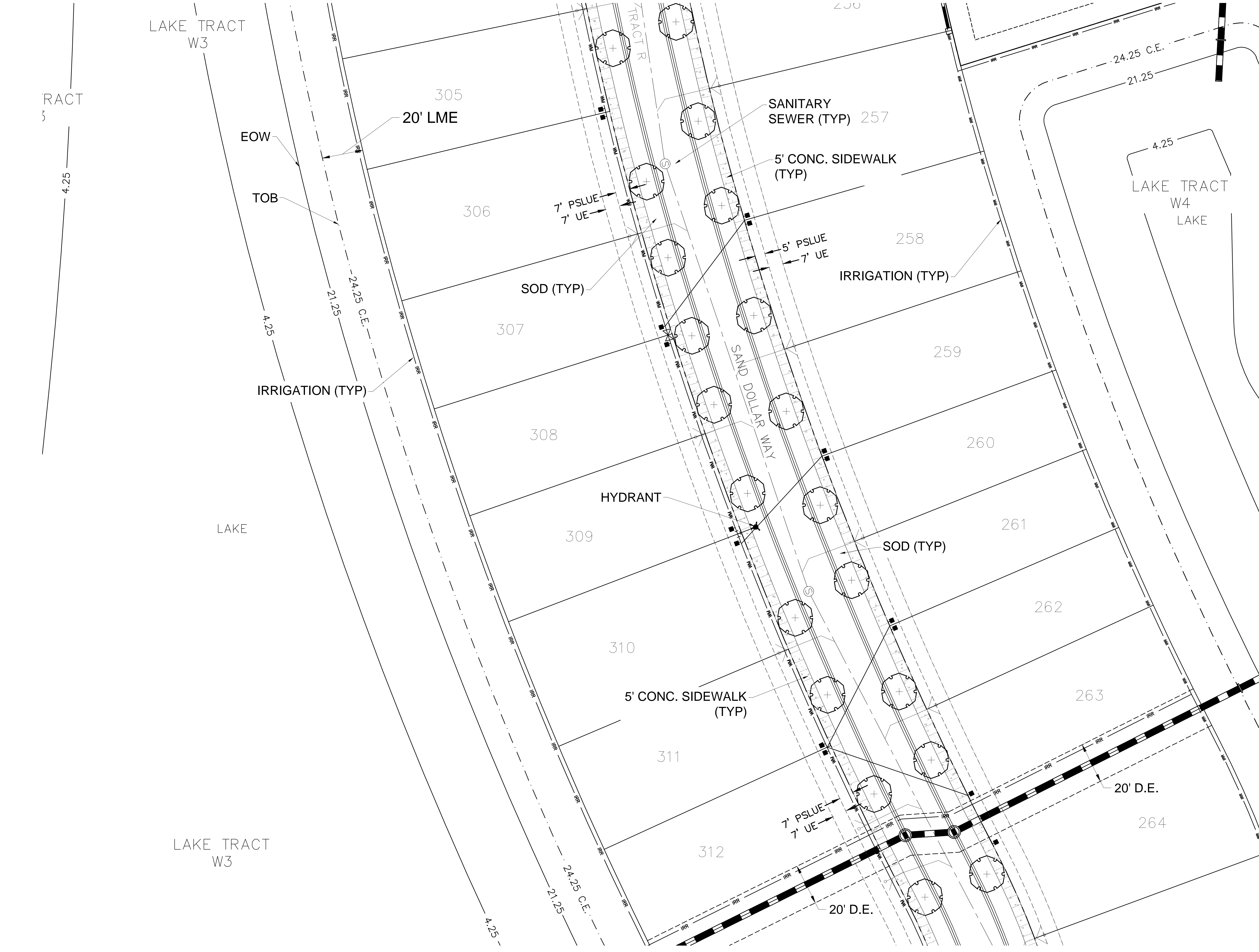
0 10' 20' 40'

**REG. # 1018**  
 Thomas P. Lucido

Designer JJ  
 Manager SG  
 Project Number 17-640  
 Municipal Number ---  
 Computer File

Sheet  
**LA-4**

© Copyright Lucido & Associates. These documents and their contents are the property of Lucido & Associates. Any reproductions, revisions, modifications or use of these documents without the express written consent of Lucido & Associates is prohibited by law.



LAKE TRACT W3

LAKE TRACT W4 LAKE

LAKE

LAKE TRACT W3

Key / Location:

PROJECT LOCATION

N.T.S.

**Project Team:**

**Client & Property Owner:** Pulte Group  
 4400 PGA Blvd, Suite 700  
 Palm Beach Gardens, FL 33410  
 561-625-6905

**Landscape Architect:** Lucido & Associates  
 701 E Ocean Boulevard  
 Stuart, FL 34994

**Engineer:** Kimley Horn  
 445 24th Street, Suite 200  
 Vero Beach, FL 32960

**UTILITIES DEPARTMENT**

APPROVED  
 APPROVED AS NOTED

Port St. Lucie Utility Systems Department (PSLUSD) hereby certifies that these plans are accurate and complete for the City of Port St. Lucie. The Engineer of Record and the Utility Contractor are hereby notified that any or all additional project costs or delays due to the PSLUSD are not responsible for additional project costs or delays due to the inability of meeting said requirements.

BY: LHayman DATE: 9/26/2021

# Pulte at Tradition Phase 2A Landscape Plan

Port St. Lucie, Florida

**Landscape Plan**  
 City of Port St. Lucie P19-121  
 PSLUSD No. 5308B

Date	By	Description
8/19/20	SAW	Initial Submittal
10/21/20	SAW	Response to comments
12/2/20	SAW	Response to comments

NORTH

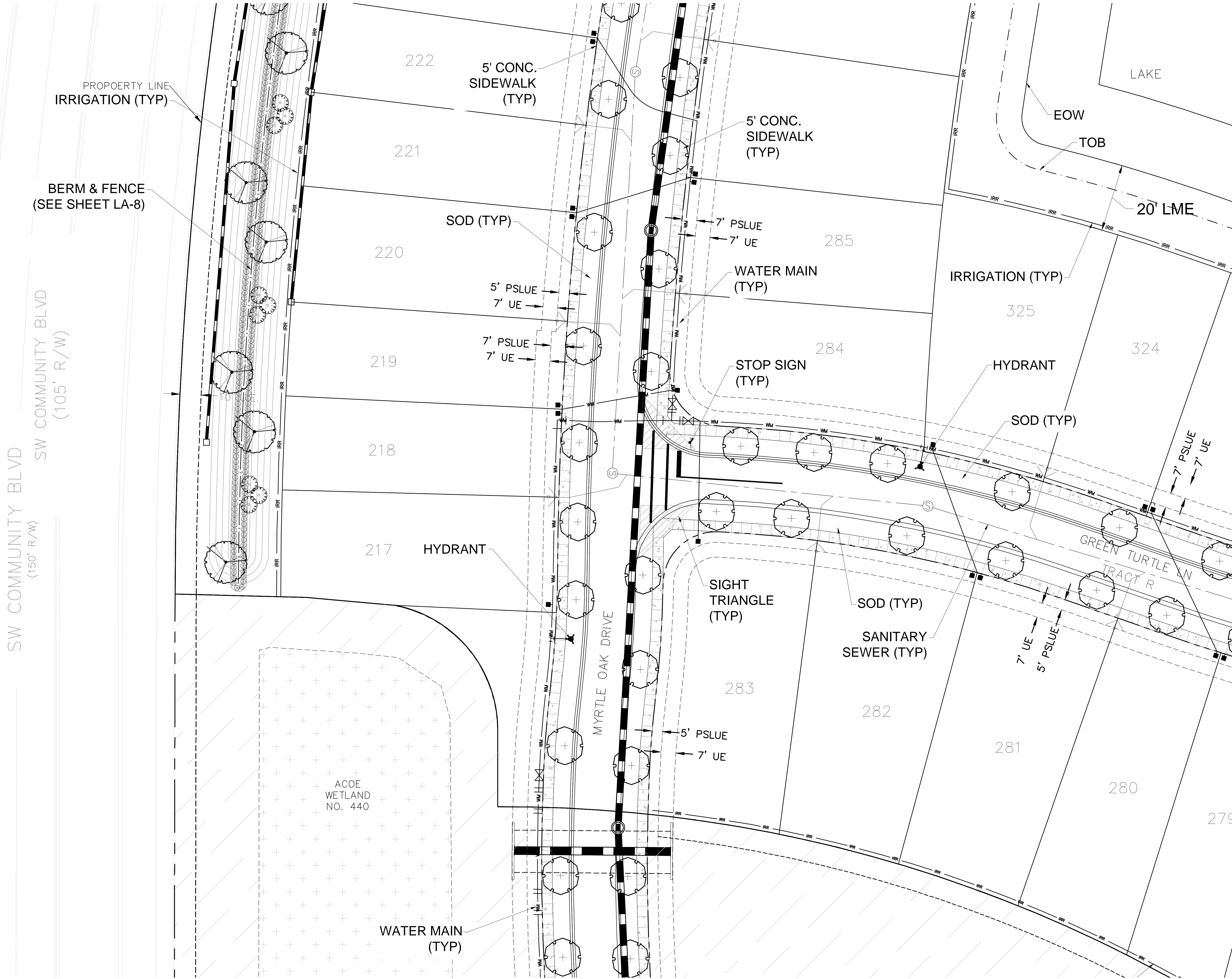
SCALE: 1" = 20'

REG. # 1018  
 Thomas P. Lucido

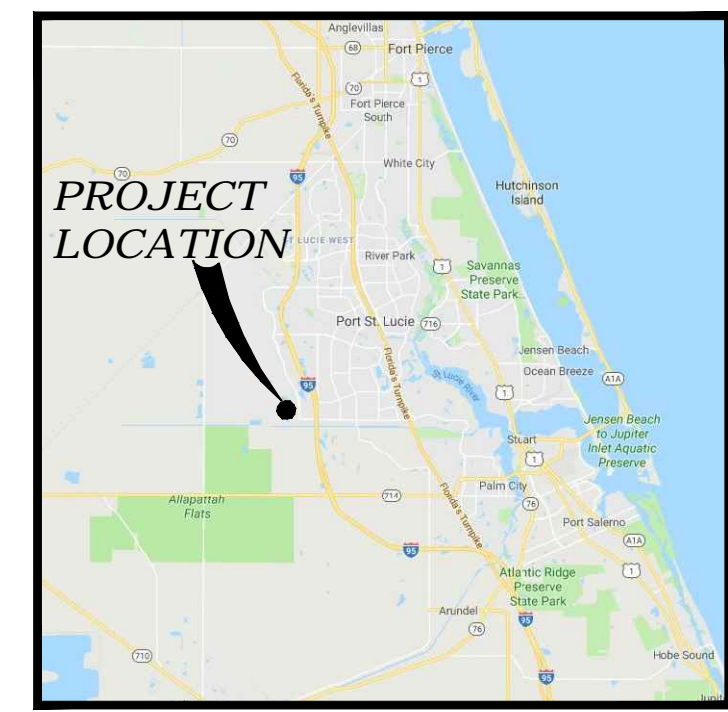
Designer JJ Sheet  
 Manager SG  
 Project Number 17-640  
 Municipal Number ---  
 Computer File

**LA-5**

© Copyright Lucido & Associates. These documents and their contents are the property of Lucido & Associates. Any reproductions, revisions, modifications or use of these documents without the express written consent of Lucido & Associates is prohibited by law.



Key / Location:



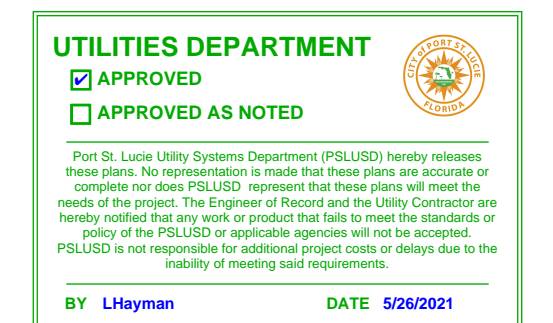
N.T.S.

Project Team:

**Client & Property Owner:** Pulte Group  
 4400 PGA Blvd, Suite 700  
 Palm Beach Gardens, FL 33410  
 561-625-6905

**Landscape Architect:** Lucido & Associates  
 701 E Ocean Boulevard  
 Stuart, FL 34994

**Engineer:** Kimley Horn  
 445 24th Street, Suite 200  
 Vero Beach, FL 32960



# Pulte at Tradition Phase 2A Landscape Plan

Port St. Lucie, Florida

## Landscape Plan

City of Port St Lucie P19-121

PSLUSD No. 5308B

Date	By	Description
8/19/20	SAW	Initial Submittal
10/21/20	SAW	Response to comments
12/2/20	SAW	Response to comments

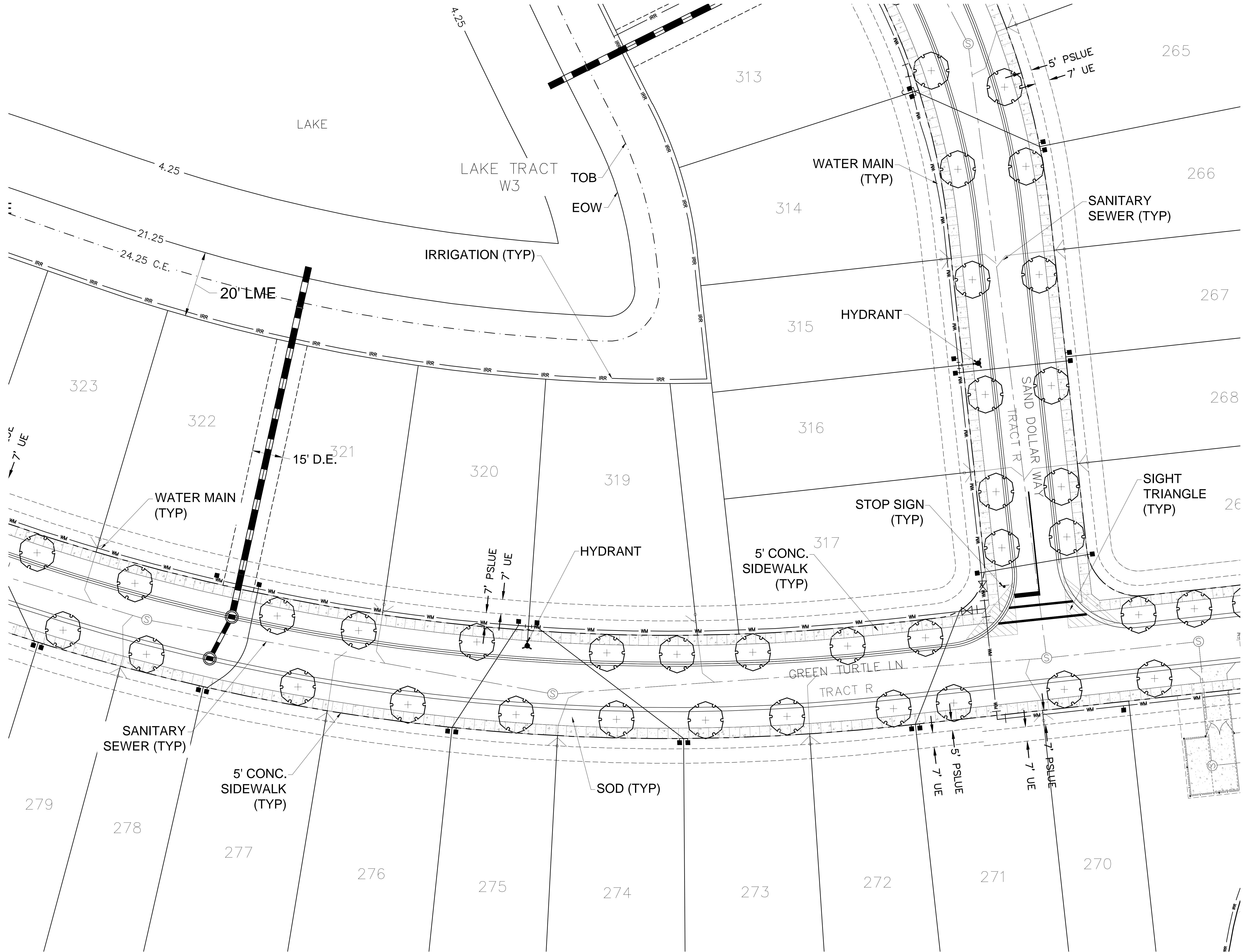
SCALE: 1" = 20'

REG. # 1018  
 Thomas P. Lucido

Designer JJ  
 Manager SG  
 Project Number 17-640  
 Municipal Number ---  
 Computer File

Sheet  
**LA-6**

© Copyright Lucido & Associates. These documents and their contents are the property of Lucido & Associates. Any reproductions, revisions, modifications or use of these documents without the express written consent of Lucido & Associates is prohibited by law.



Key / Location:



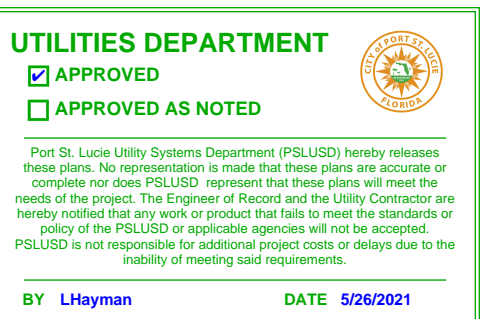
N.T.S.

Project Team:

**Client & Property Owner:** Pulte Group  
 4400 PGA Blvd, Suite 700  
 Palm Beach Gardens, FL 33410  
 561-625-6905

**Landscape Architect:** Lucido & Associates  
 701 E Ocean Boulevard  
 Stuart, FL 34994

**Engineer:** Kimley Horn  
 445 24th Street, Suite 200  
 Vero Beach, FL 32960

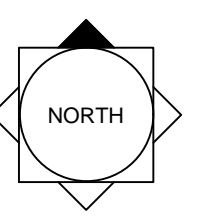


# Pulte at Tradition Phase 2A Landscape Plan

Port St. Lucie, Florida

Landscape Plan  
 City of Port St Lucie P19-121  
 PSLUSD No. 5308B

Date	By	Description
8/19/20	SAW	Initial Submittal
10/21/20	SAW	Response to comments
12/2/20	SAW	Response to comments

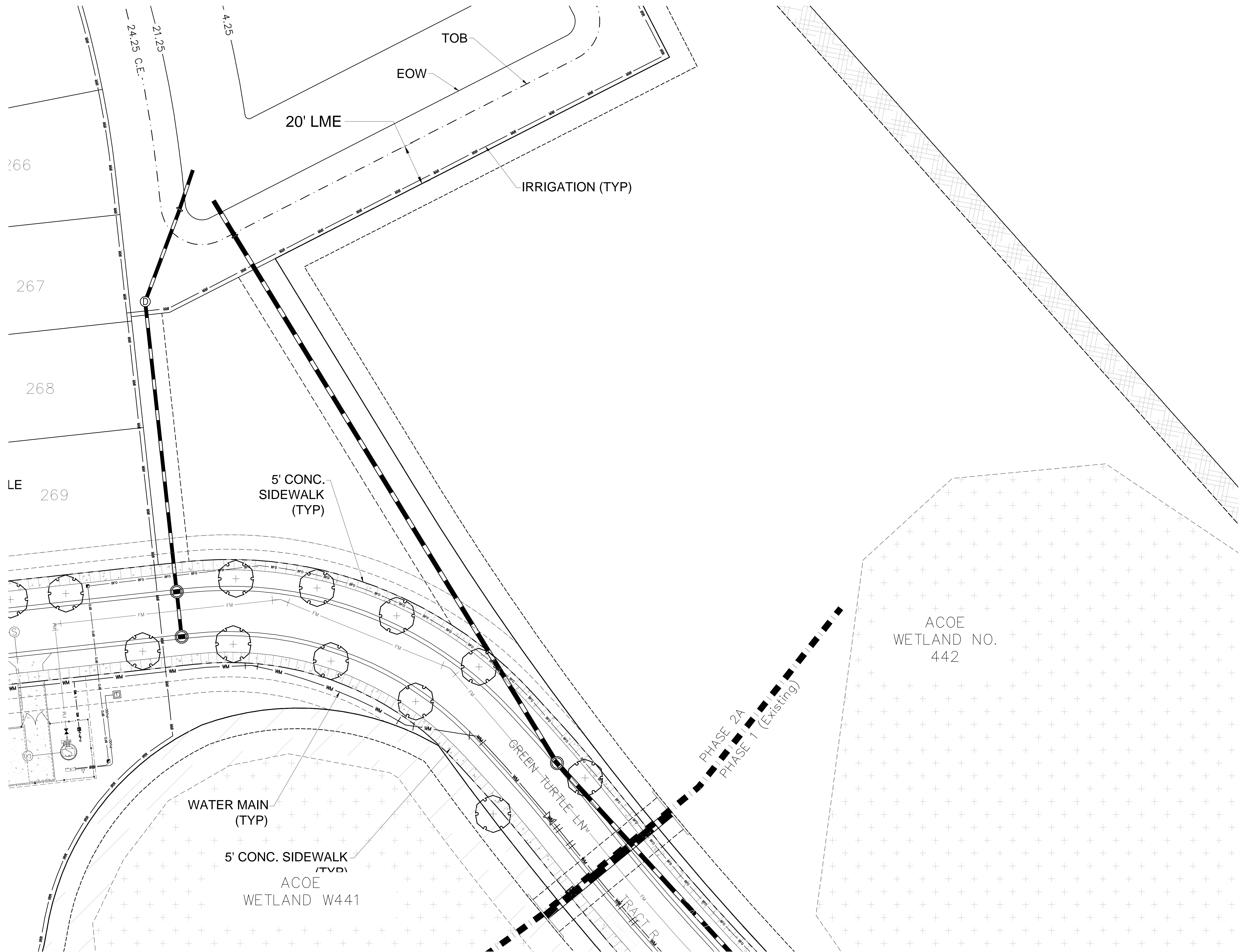


SCALE: 1" = 20'  
 0 10' 20' 40'

REG. # 1018  
 Thomas P. Lucido

Designer JJ  
 Manager SG  
 Project Number 17-640  
 Municipal Number ---  
 Computer File

Sheet  
**LA-7**





Key / Location:

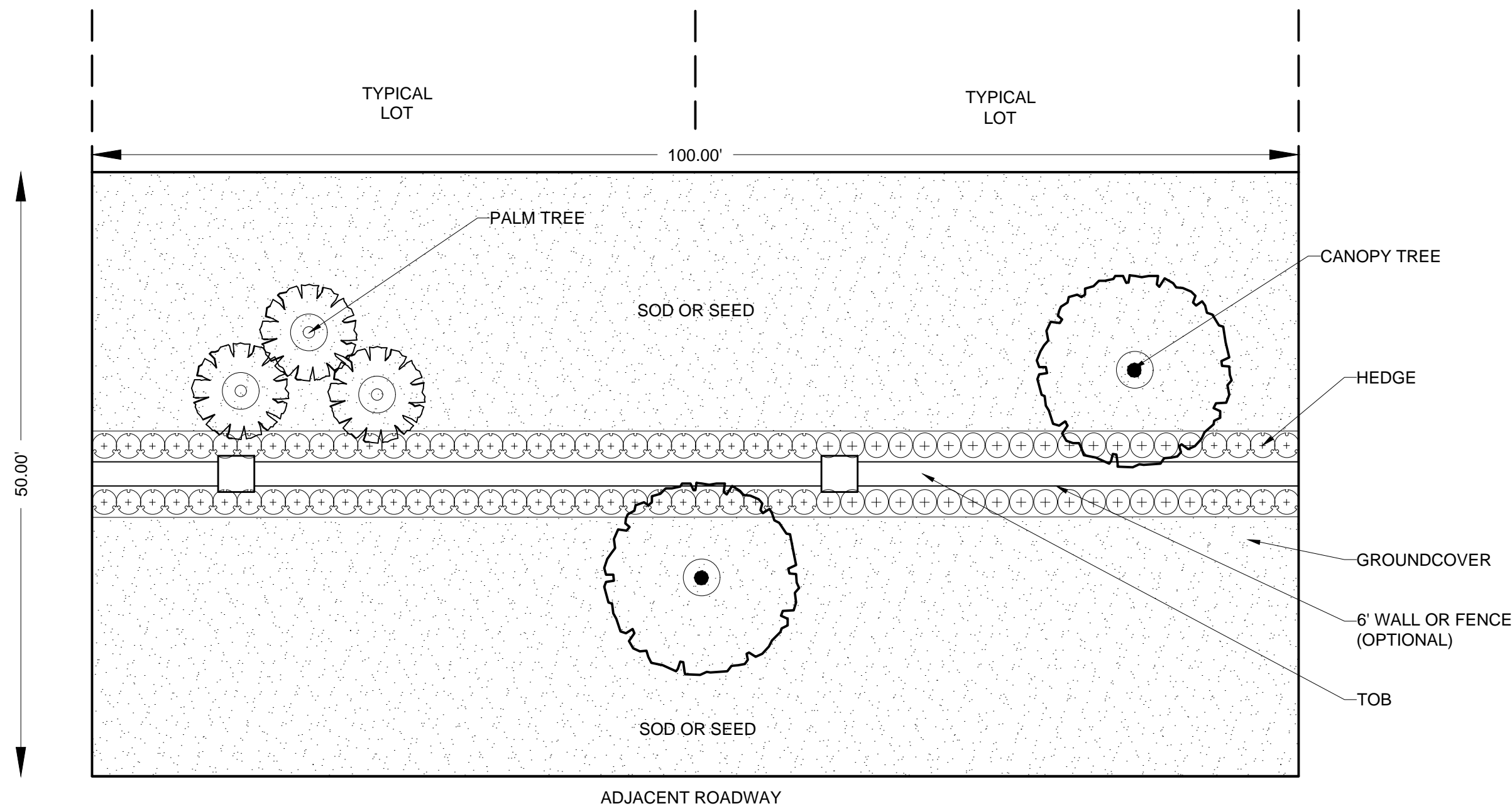
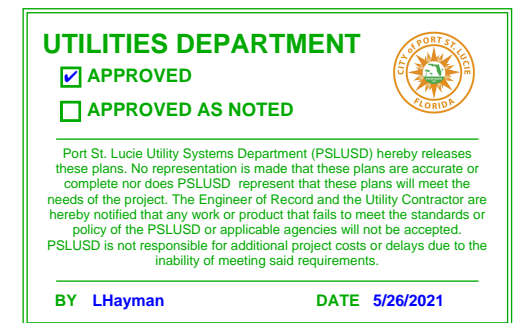


Project Team:

**Client & Property Owner:** Pulte Group  
 4400 PGA Blvd, Suite 700  
 Palm Beach Gardens, FL 33410  
 561-625-6905

**Landscape Architect:** Lucido & Associates  
 701 E Ocean Boulevard  
 Stuart, FL 34994

**Engineer:** Kimley Horn  
 445 24th Street, Suite 200  
 Vero Beach, FL 32960



Typical 100' Landscape Buffer  
 Scale: 1" = 10'-0"

PLANT SCHEDULE TYPICAL BUFFER

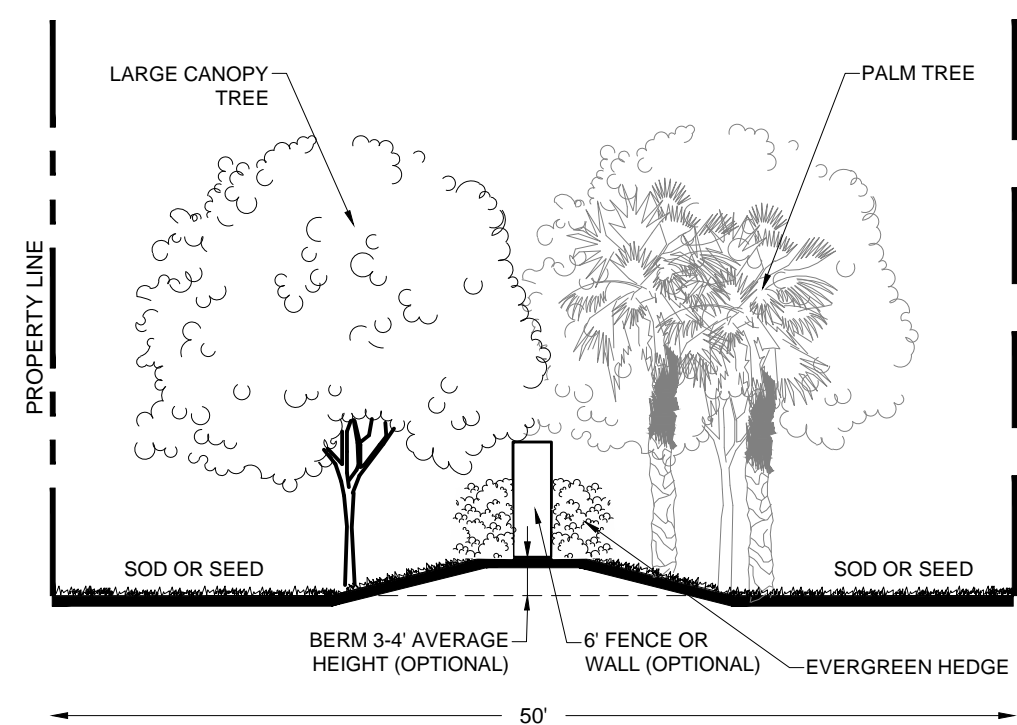
TREES	QTY	BOTANICAL NAME	COMMON NAME	SPECS
	2	Quercus virginiana	Southern Live Oak	FG, 16'-18' HT, 8" SPR, 4" C, SP, HO
	3	Sabal palmetto	Sabal Palm	FG, 10'-18' CT HT, HV CAL, SP, HC
SHRUBS	QTY	BOTANICAL NAME	COMMON NAME	SPECS
	68	Chrysobalanus icaco 'Red Tip'	Red Tip Cocoplum	3G, 24" HT, 18" W, F, Native
	32	Viburnum odoratissimum	Sweet Viburnum	3G, 24" OA, F,

Typical 100' Landscape Buffer Plant List

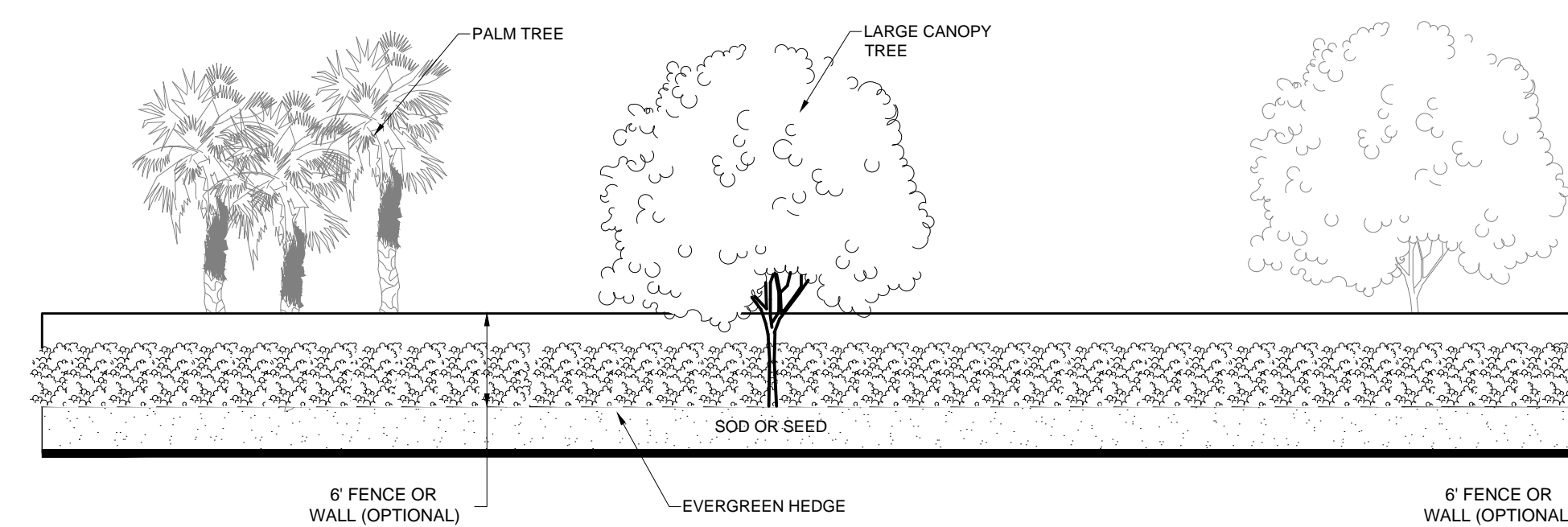
Pulte at Tradition  
 Phase 2  
 Landscape Plan

Port St. Lucie, Florida  
 Typical Buffer  
 Landscape Plan  
 City of Port St Lucie P19-121  
 PSLUSD No. 5308B

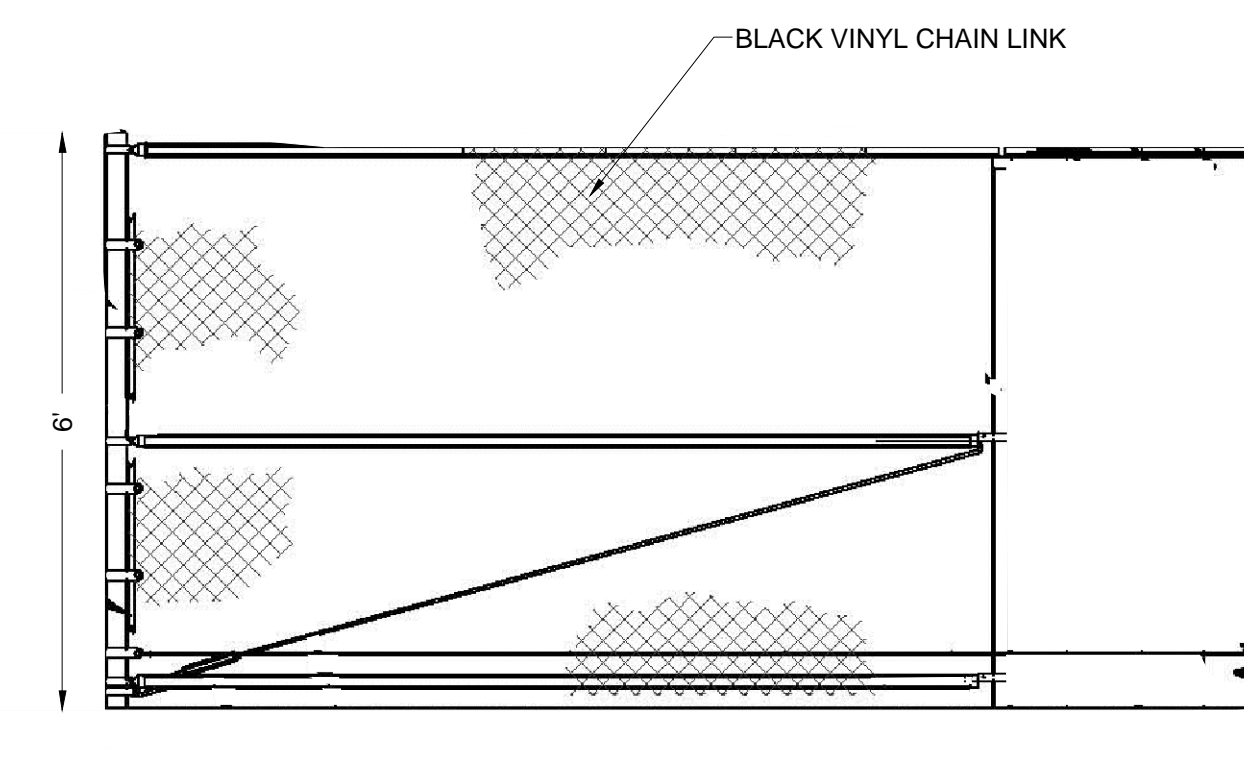
Date	By	Description
8/19/20	SAW	Initial Submittal
10/21/20	SAW	Response to comments
12/2/20	SAW	Response to comments



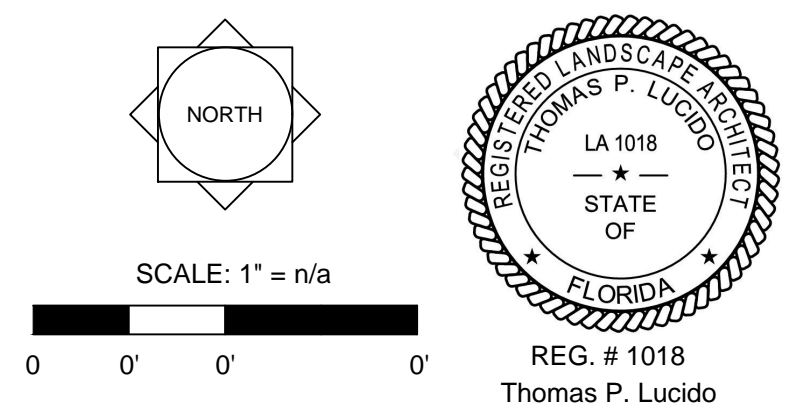
Typical Landscape Buffer Section  
 Scale: 1" = 10'-0"



Typical Landscape Buffer Elevation  
 Scale: 1" = 10'-0"



Typical Chain Link Fence Detail  
 Scale: 1/2" = 1'-0"



Designer JJ  
 Manager SG  
 Project Number 17-640  
 Municipal Number ---  
 Computer File

Sheet  
**LA-8**

NOTES:  
 OPTIONAL DESIGN ELEMENTS SUCH AS BERM ELEVATION, FENCE OR WALL, AND SPECIES SUBSTITUTIONS WILL BE PROVIDED AT TIME OF FINAL PLAT.

Key / Location:



Project Team:

**Client & Property Owner:** Pulte Group  
 4400 PGA Blvd, Suite 700  
 Palm Beach Gardens, FL 33410  
 561-625-6905

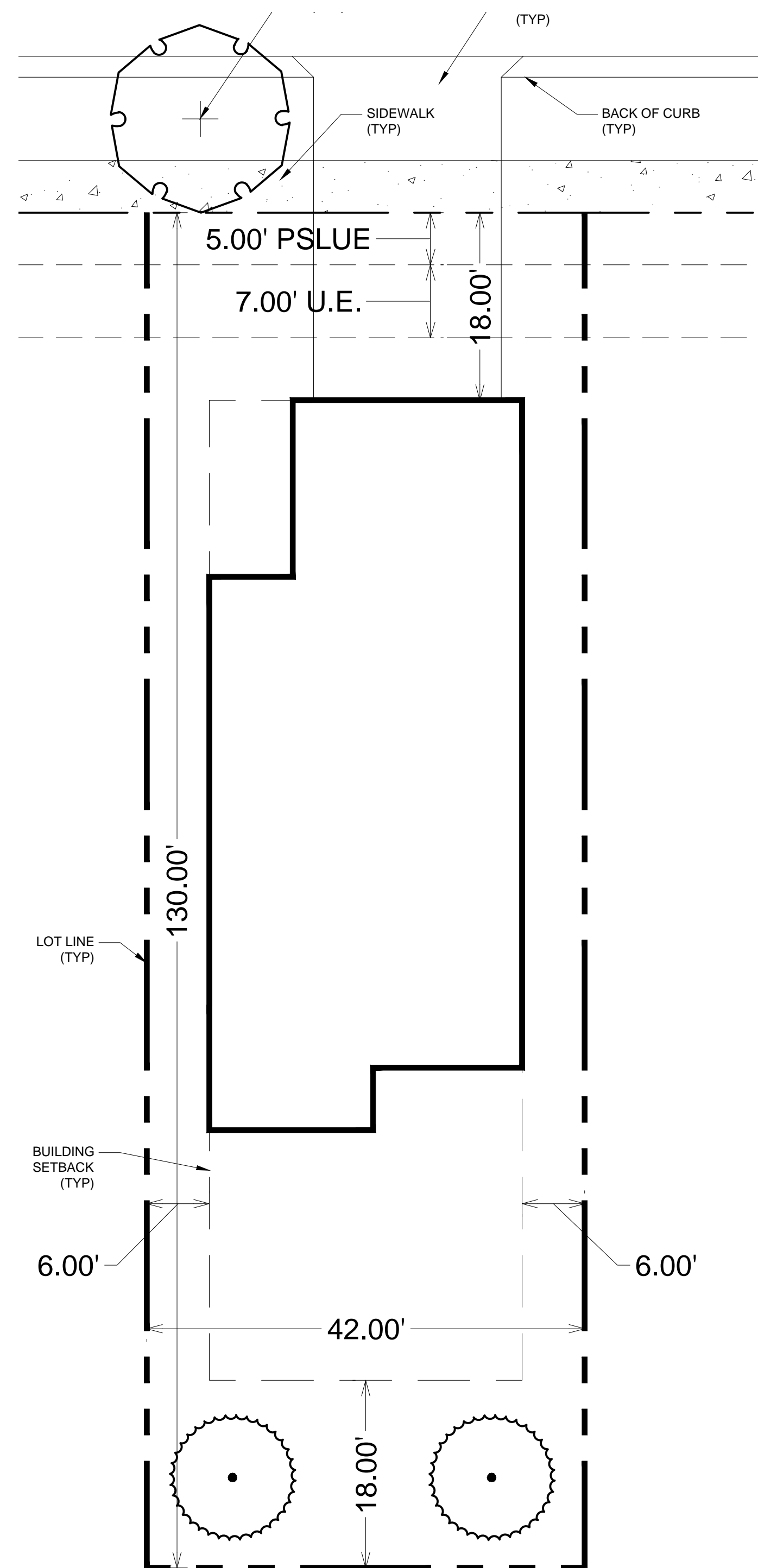
**Landscape Architect:** Lucido & Associates  
 701 E Ocean Boulevard  
 Stuart, FL 34994

**Engineer:** Kimley Horn  
 445 24th Street, Suite 200  
 Vero Beach, FL 32960

# Pulte at Tradition Phase 2A Landscape Plan

Port St. Lucie, Florida  
 Typical Lot  
 Landscape Plans  
 City of Port St. Lucie P19-121  
 PSLUSD No. 5308B

Date	By	Description
8/19/20	SAW	Initial Submittal
10/21/20	SAW	Response to comments
12/2/20	SAW	Response to comments



**LANDSCAPE CALCULATIONS PER PUD - 42' LOT:**

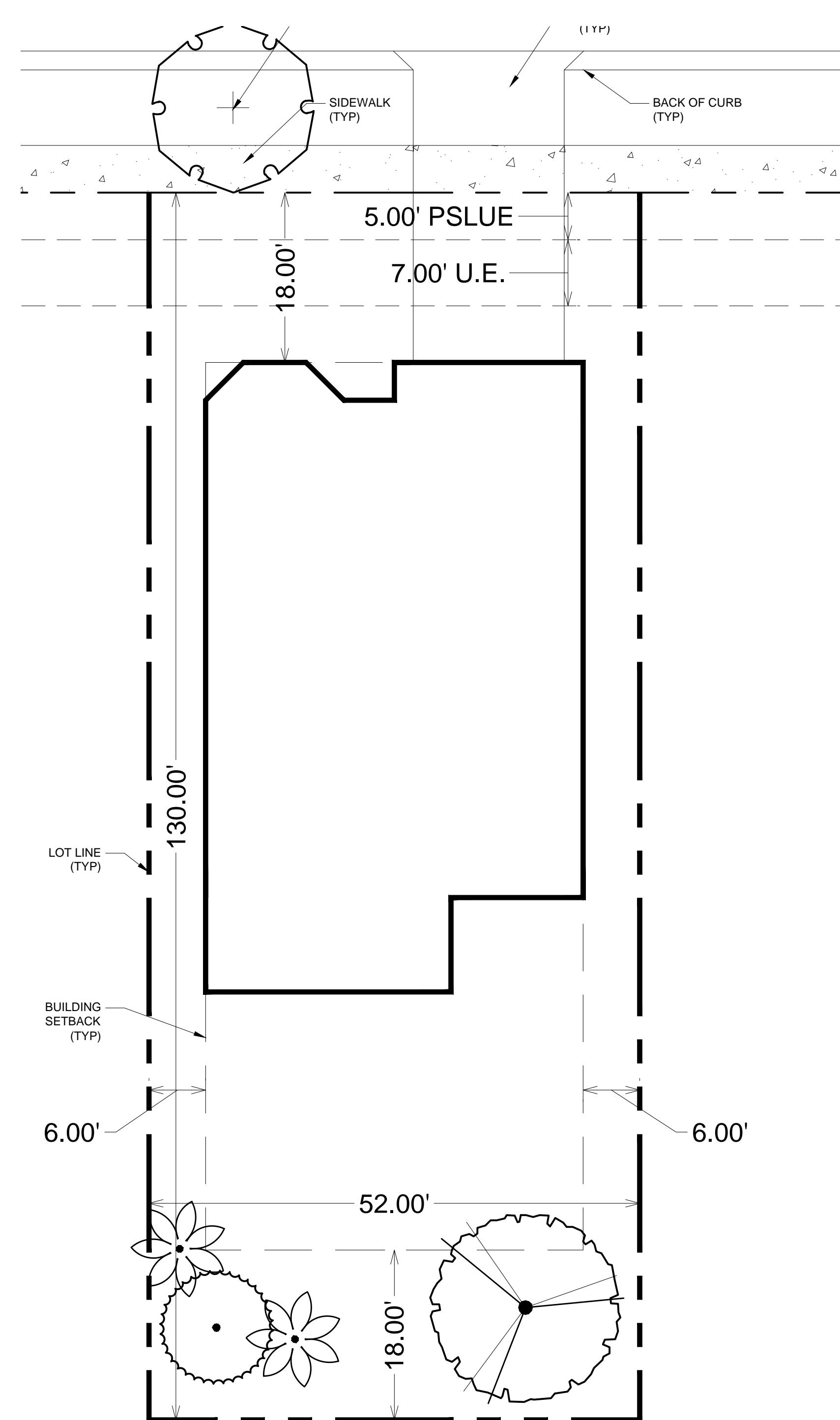
Single Family Dwelling Unit: Under 6,000 SF Lot Area  
 Lots less than 6,000 sq. ft. shall provide two (2) trees.

Total Trees Required = 2  
 Trees Provided = \*2 Trees

**\*TREE SPECIES**

Refer to Section 7.09.04 (L)(2) Standards for Native and Drought-Tolerant Vegetation of the Port St. Lucie Land Development Code for acceptable tree species. Tree examples include:

- Quercus virginiana (live oak)
- Ilex x attenuata 'Eagleston' ('Eagleston holly')
- Magnolia grandiflora 'Little Gem' ('Little Gem' magnolia)



**LANDSCAPE CALCULATIONS PER PUD - 52' LOT:**

Single Family Dwelling Unit: Lots From 6,000 to 7,500 sq. ft.  
 Lots from 6,000 to 7,500 sq. ft. shall provide three (3) trees.

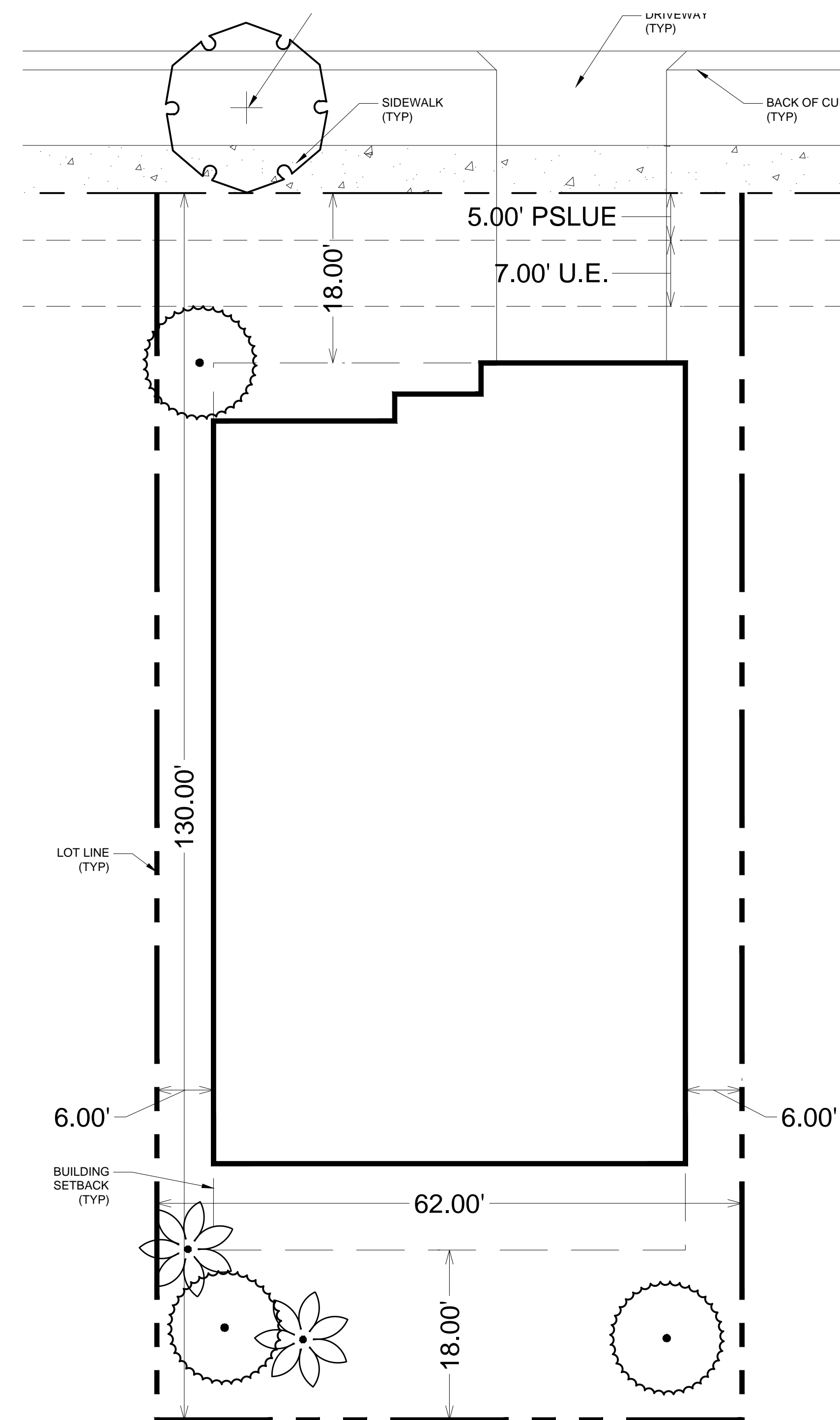
Total Trees Required = 3  
 Trees Provided = \*3 Trees (1 Palm Credit)

**GENERAL LANDSCAPE NOTES - TYPICAL LOT LANDSCAPE PLAN:**

1. 100% of all required trees on lots shall be of a native species.
2. All plant material to be Florida No. 1 or better.
3. All landscape & sod areas to be irrigated by an automated system that provides 100% coverage with 100% overlap with a minimum d.u. of .70.

**PSLUSD NOTES FOR LANDSCAPE PLANS**

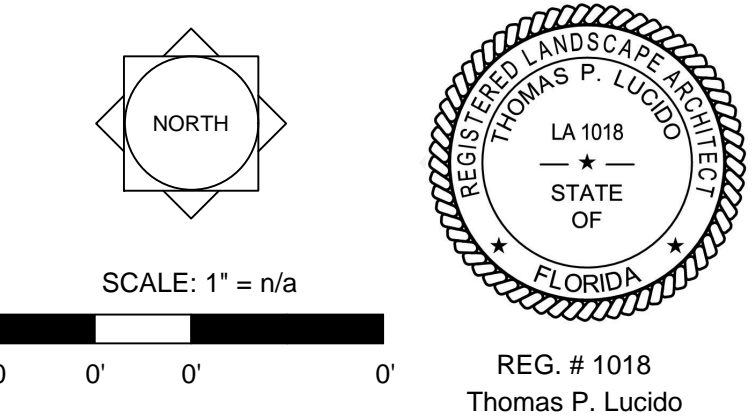
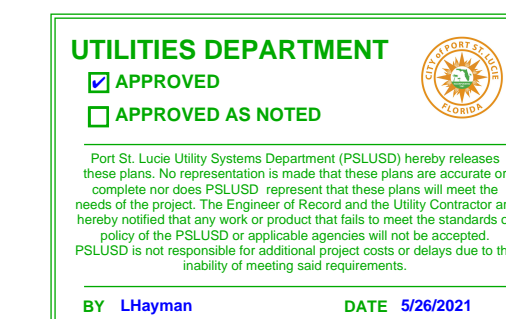
1. All new landscaping within utility easements and within ten (10) feet of underground utility infrastructure shall comply with PSLUSD technical specifications, policies, and codes.
2. No landscaping other than sod grasses may be planted within a 5' radius maintenance area of any utility appurtenances such as water meters, backflow devices, fire hydrants, sanitary sewer cleanouts, and manholes, air release valves, etc. Trees shall not be planted within ten (10) feet of any underground infrastructure.
3. No landscaping shall be planted in such a manner as to adversely affect utility installation, operation and maintenance.



**LANDSCAPE CALCULATIONS PER PUD - 62' LOT:**

Single Family Dwelling Unit: Lots Over 7,500 sq. ft.  
 Lots over 7,500 sq. ft. shall provide four (4) trees.

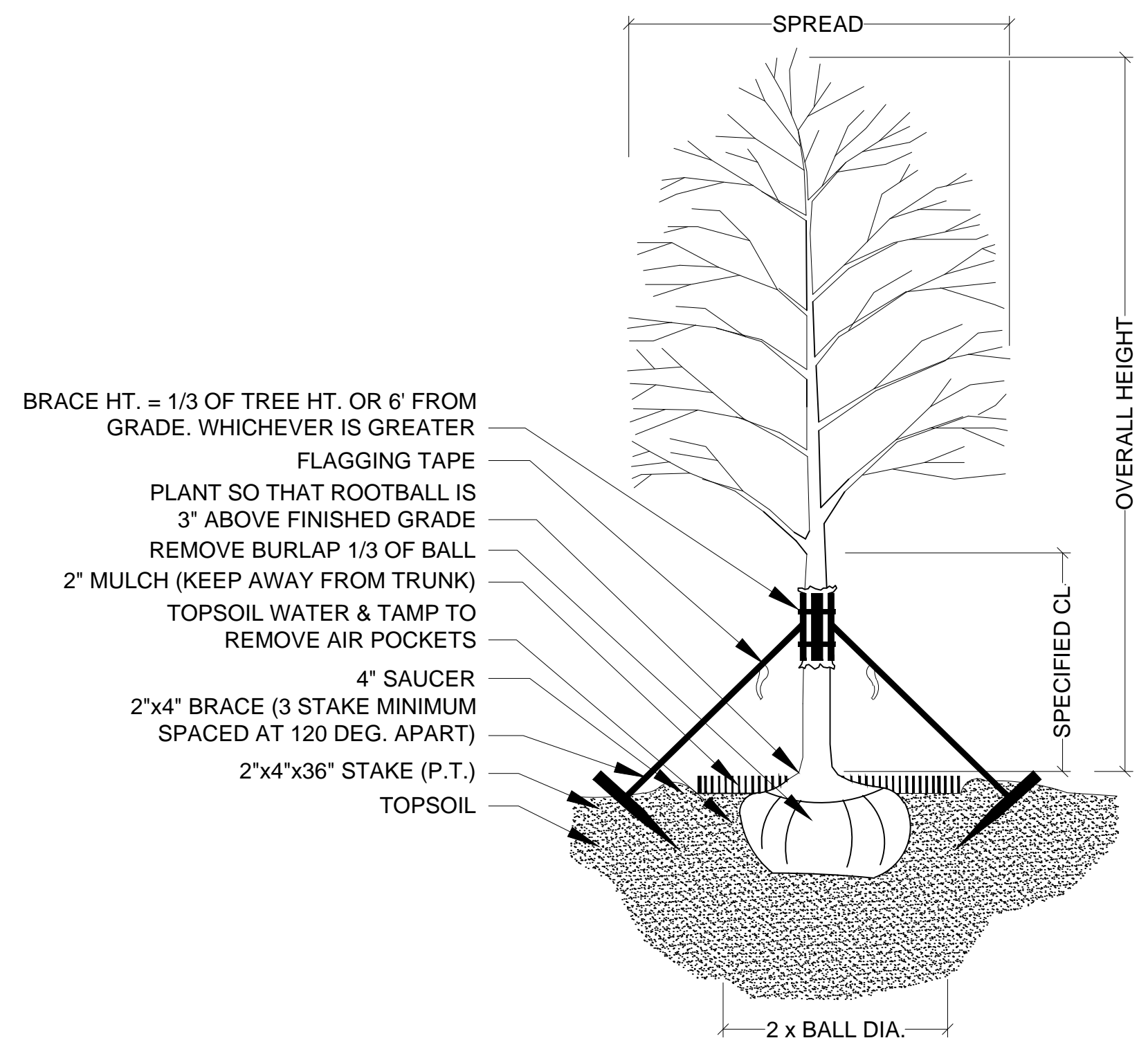
Total Trees Required = 4  
 Trees Provided = \*4 Trees (1 Palm Credit)



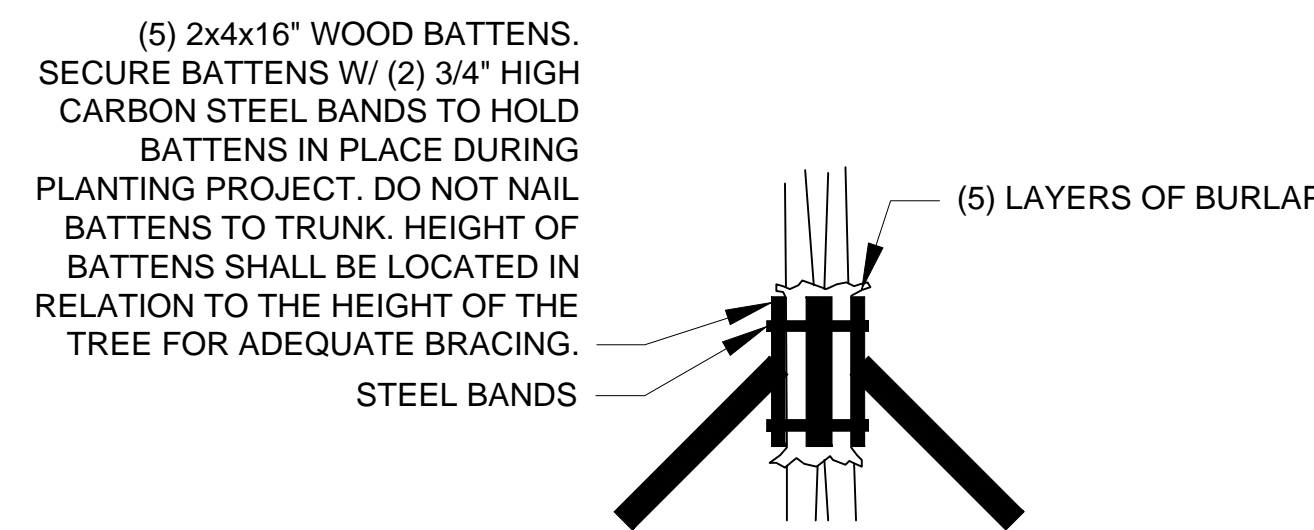
REG. # 1018  
 Thomas P. Lucido

Designer JJ Sheet  
 Manager SG  
 Project Number 17-640  
 Municipal Number ---  
 Computer File

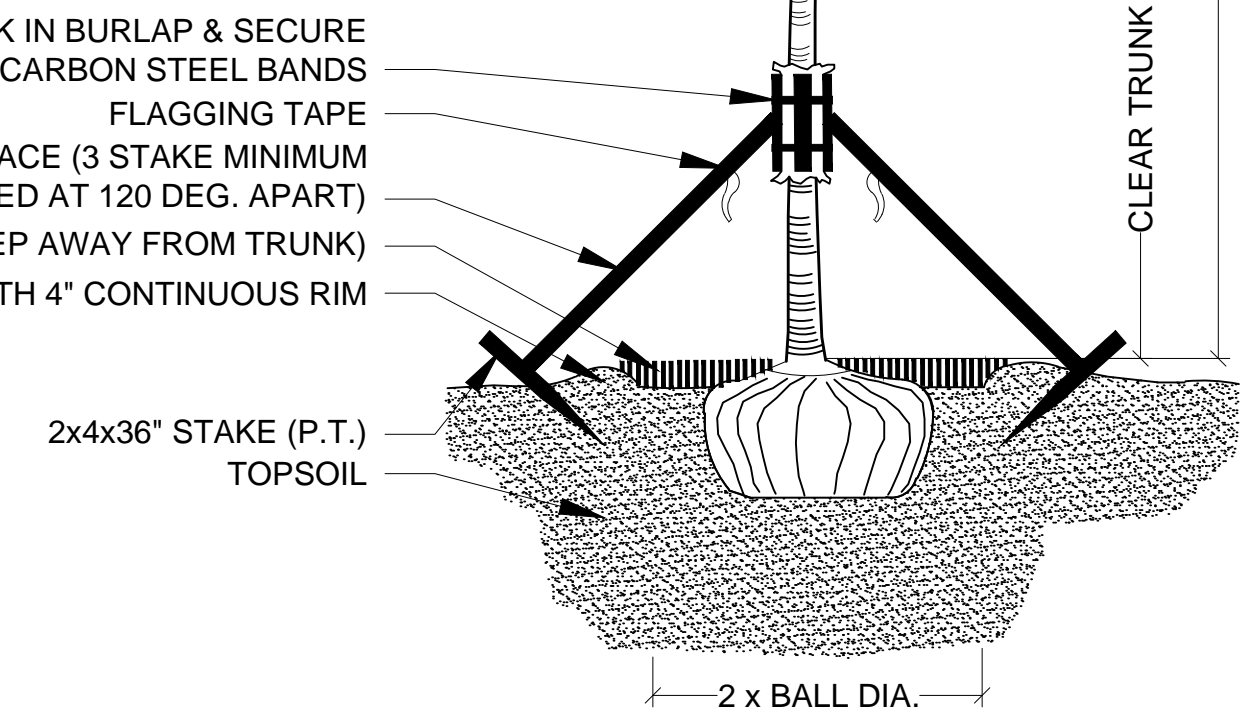
# LA-9



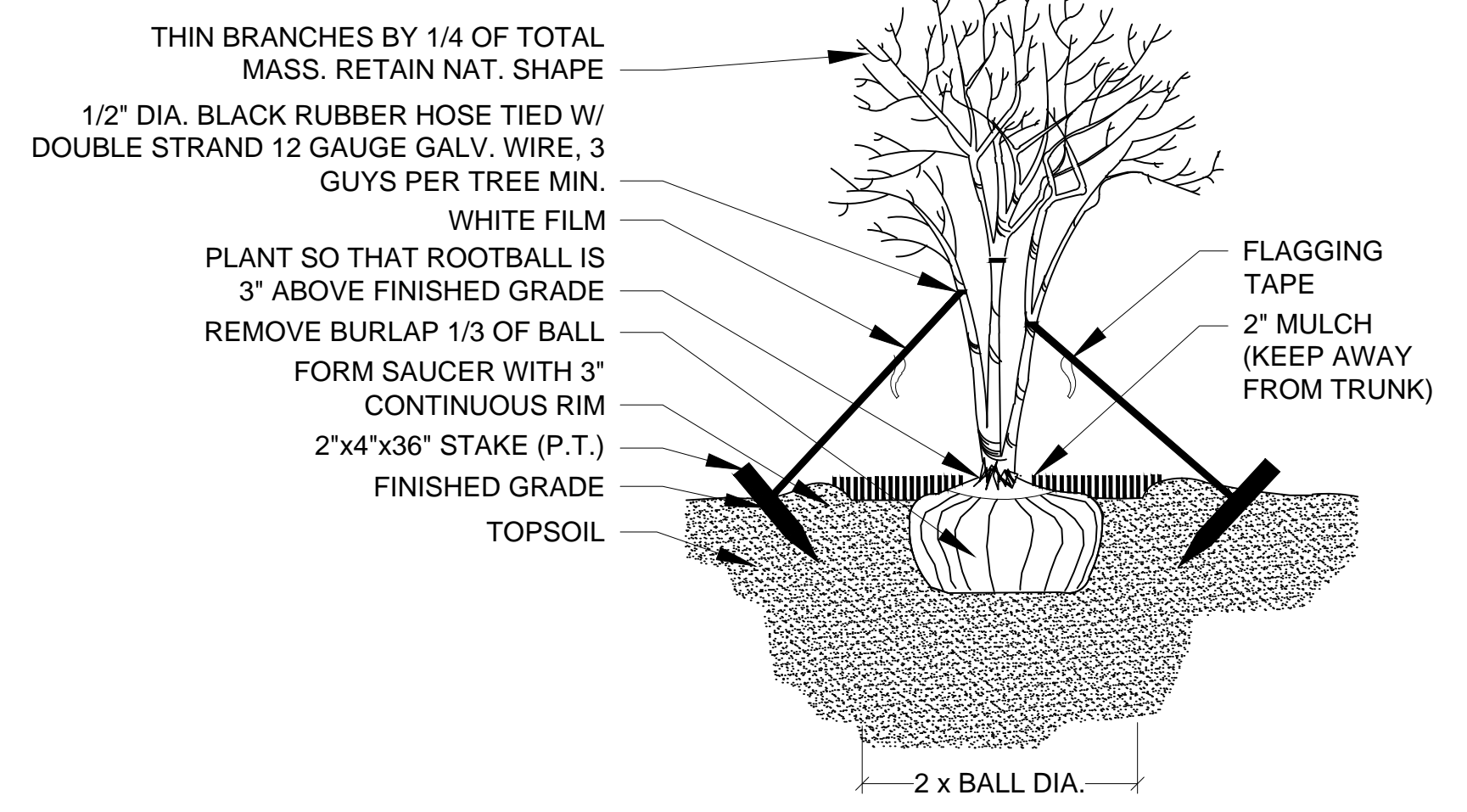
**TREE PLANTING & STAKING**  
 NOT TO SCALE



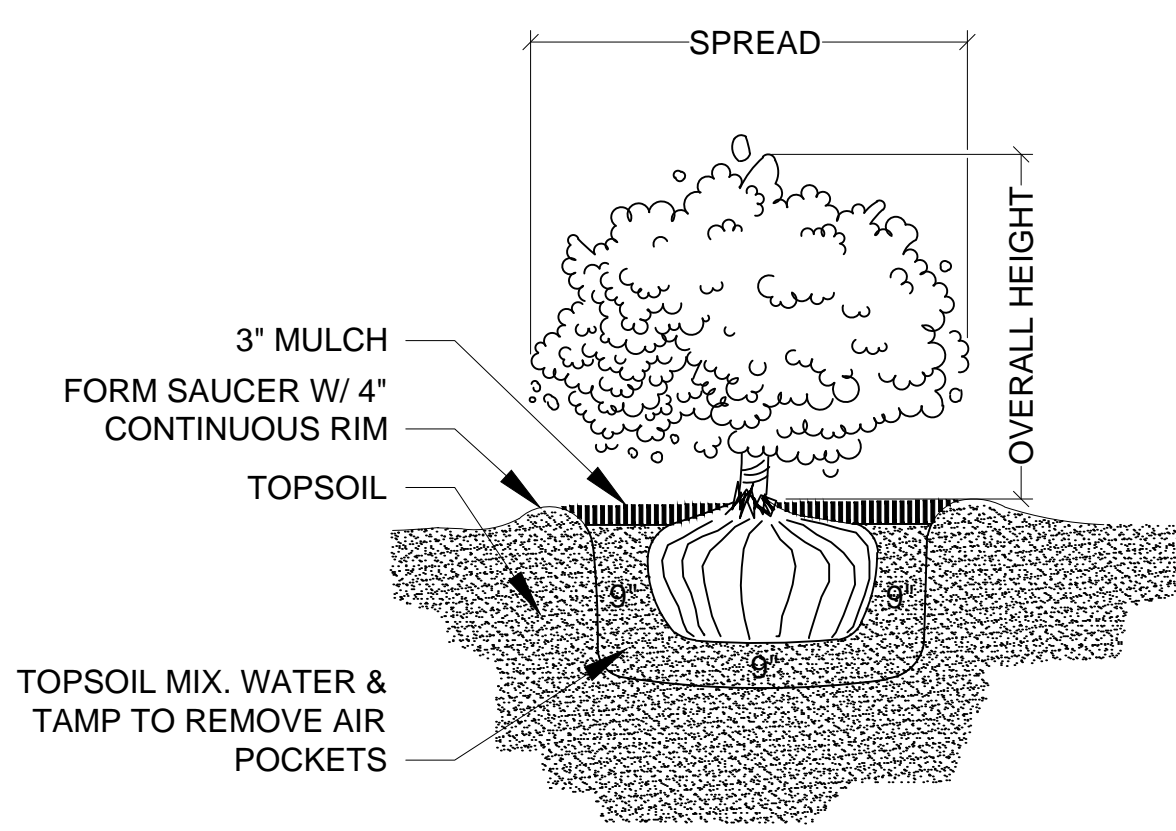
**BRACING DETAIL**  
 NOT TO SCALE



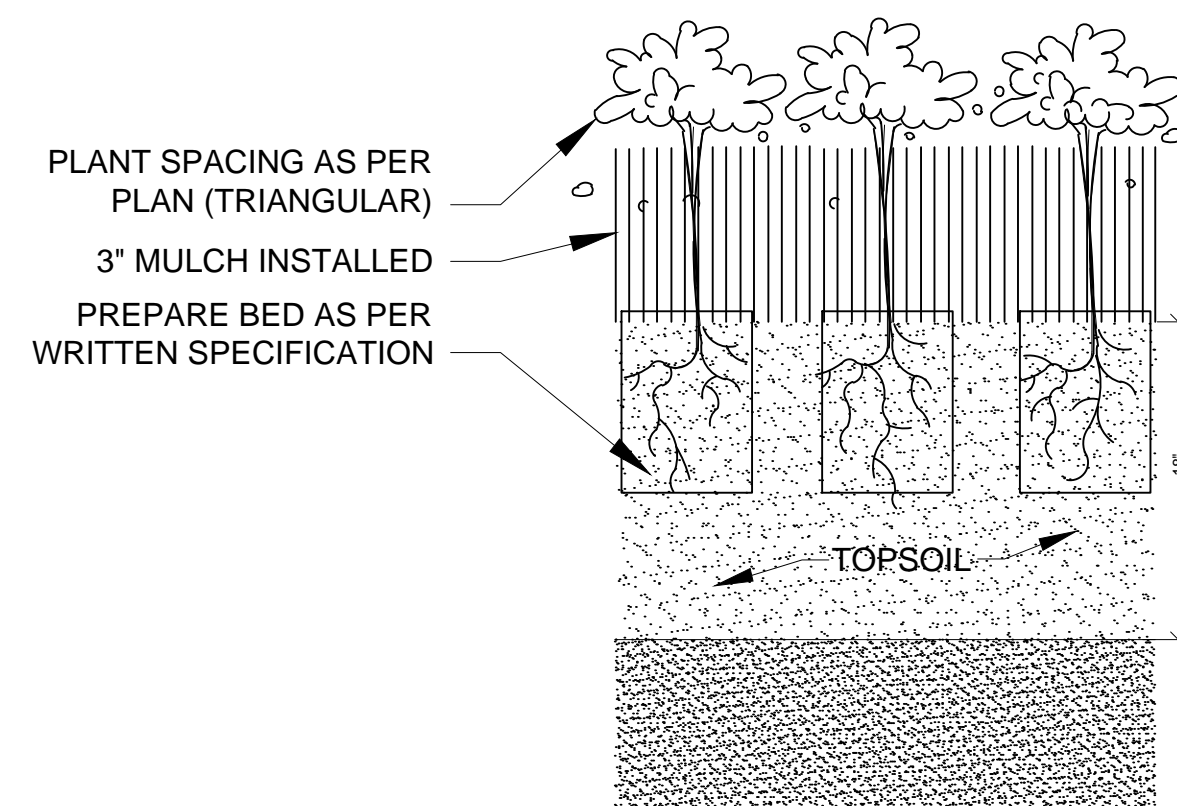
**PALM PLANTING - ANGLE STAKE**  
 NOT TO SCALE



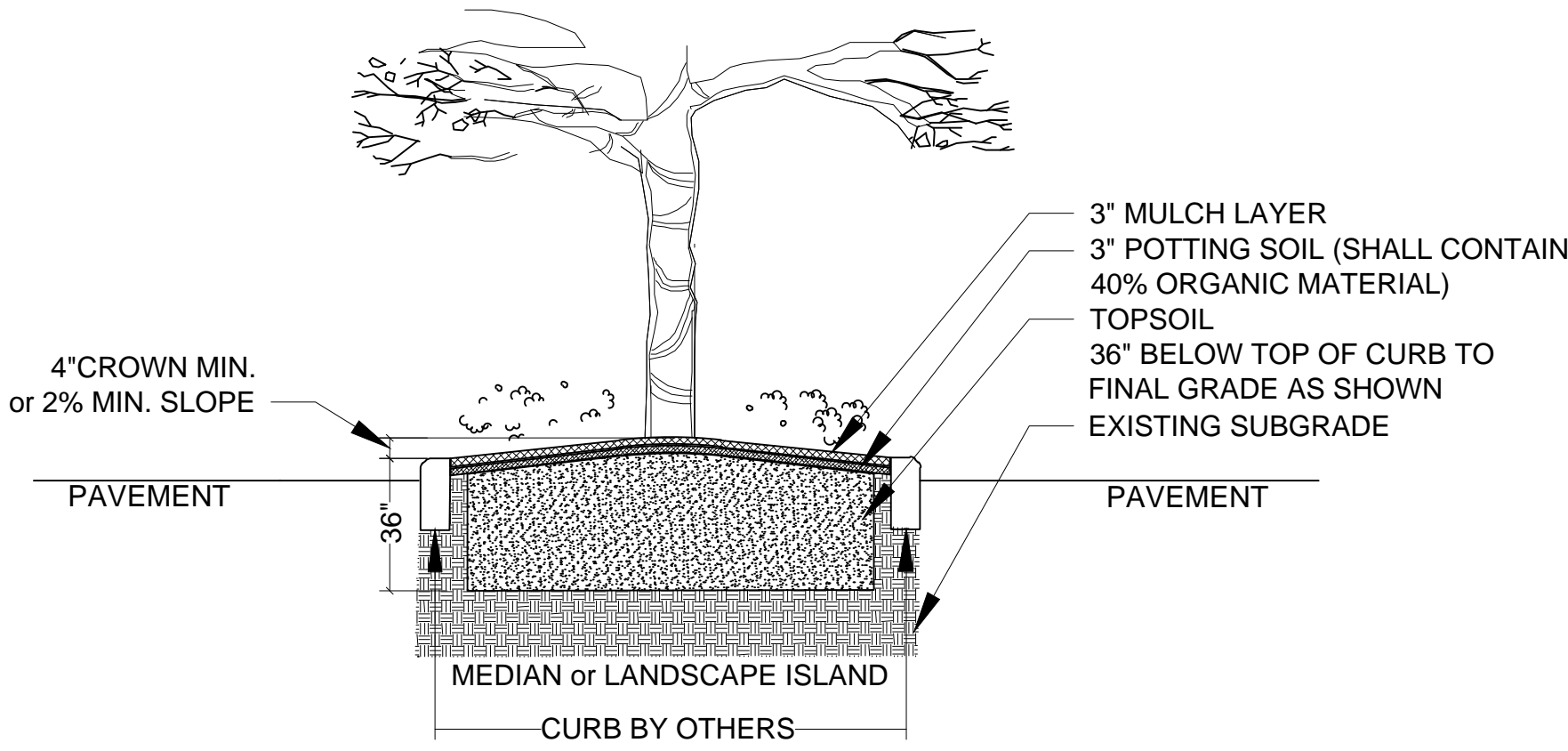
**MULTI-TRUNK PLANTING & GUYING**  
 NOT TO SCALE



**SHRUB PLANTING**  
 NOT TO SCALE



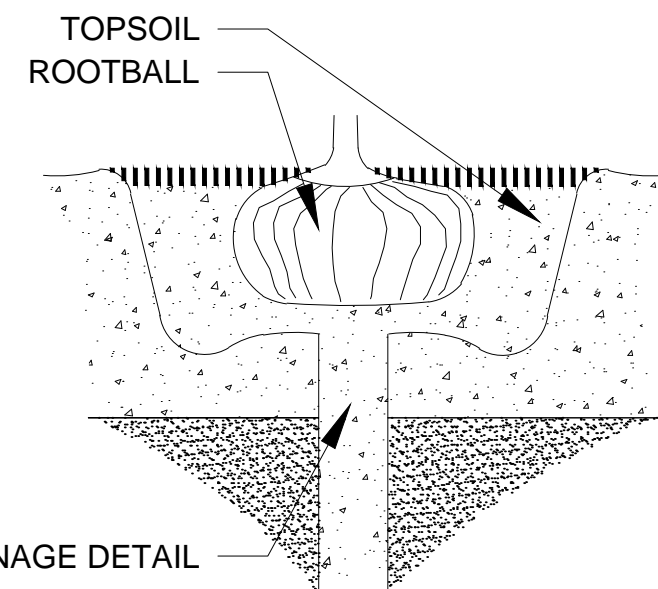
**GROUNDCOVER PLANTING DETAIL**  
 NOT TO SCALE



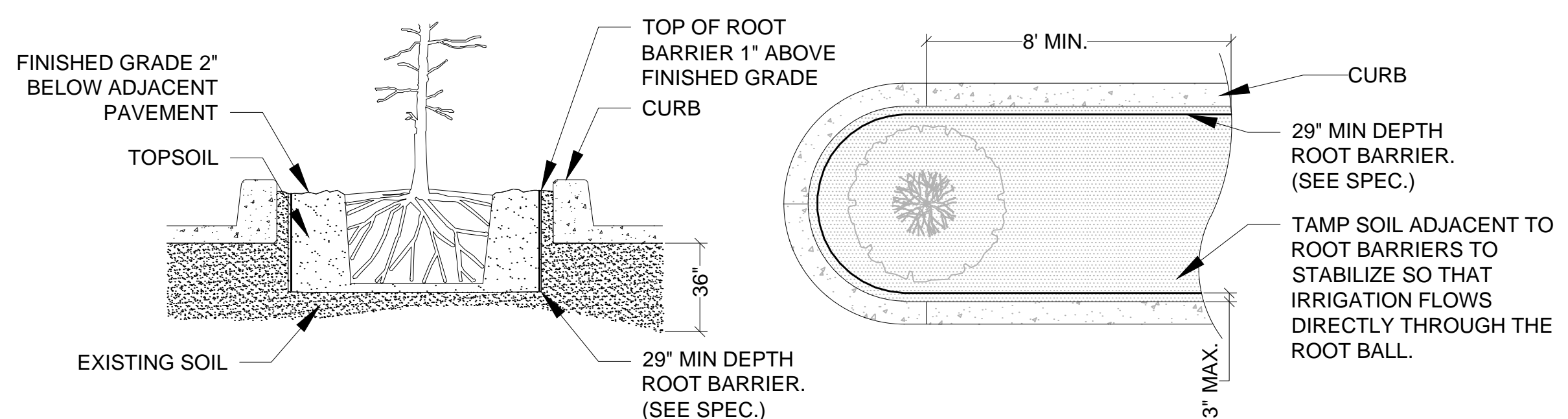
THIS DETAIL SHOWN DEPICTS A MEDIAN AND/OR LANDSCAPE ISLAND AND IS FOR GRAPHIC PURPOSES ONLY; SOIL PREPARATION SHALL APPLY TO ALL TREE, SHRUB, & GROUND COVER AREAS. THIS DOES NOT INCLUDE SOD AREAS

**LANDSCAPE AREA PREPARATION DETAIL**  
 NOT TO SCALE

- \*TOPSOIL SHALL BE NATURAL, FRIABLE, FINE LOAMY SOIL POSSESSING CHARACTERISTICS OF REPRESENTATIVE TOPSOIL IN THE VICINITY OF THE PROJECT SITE THAT PRODUCES HEAVY GROWTH.
- \*TOPSOIL SHALL HAVE A PH RANGE OF 5.5-7.4, FREE FROM SUBSOIL, WEEDS, LITTER, SODS, CLAY, STONES, STUMPS, ROOTS, TRASH, HERBICIDES, TOXIC SUBSTANCES, OR ANY OTHER MATERIAL WHICH MAY BE HARMFUL TO PLANT GROWTH, OR HINDER PLANTING OPERATIONS.
- \*TOPSOIL SHALL CONTAIN A MINIMUM OF 3% ORGANIC MATERIAL.
- \*TOPSOIL MUST PERCOLATE WATER AT A RATE OF 1" PER HOUR (SEE ALSO DRAINAGE TESTING DETAIL FOR TREES)
- \*LANDSCAPE AREA SOILS SHALL BE APPROVED BY LANDSCAPE ARCHITECT/OWNER PRIOR TO PLANTING

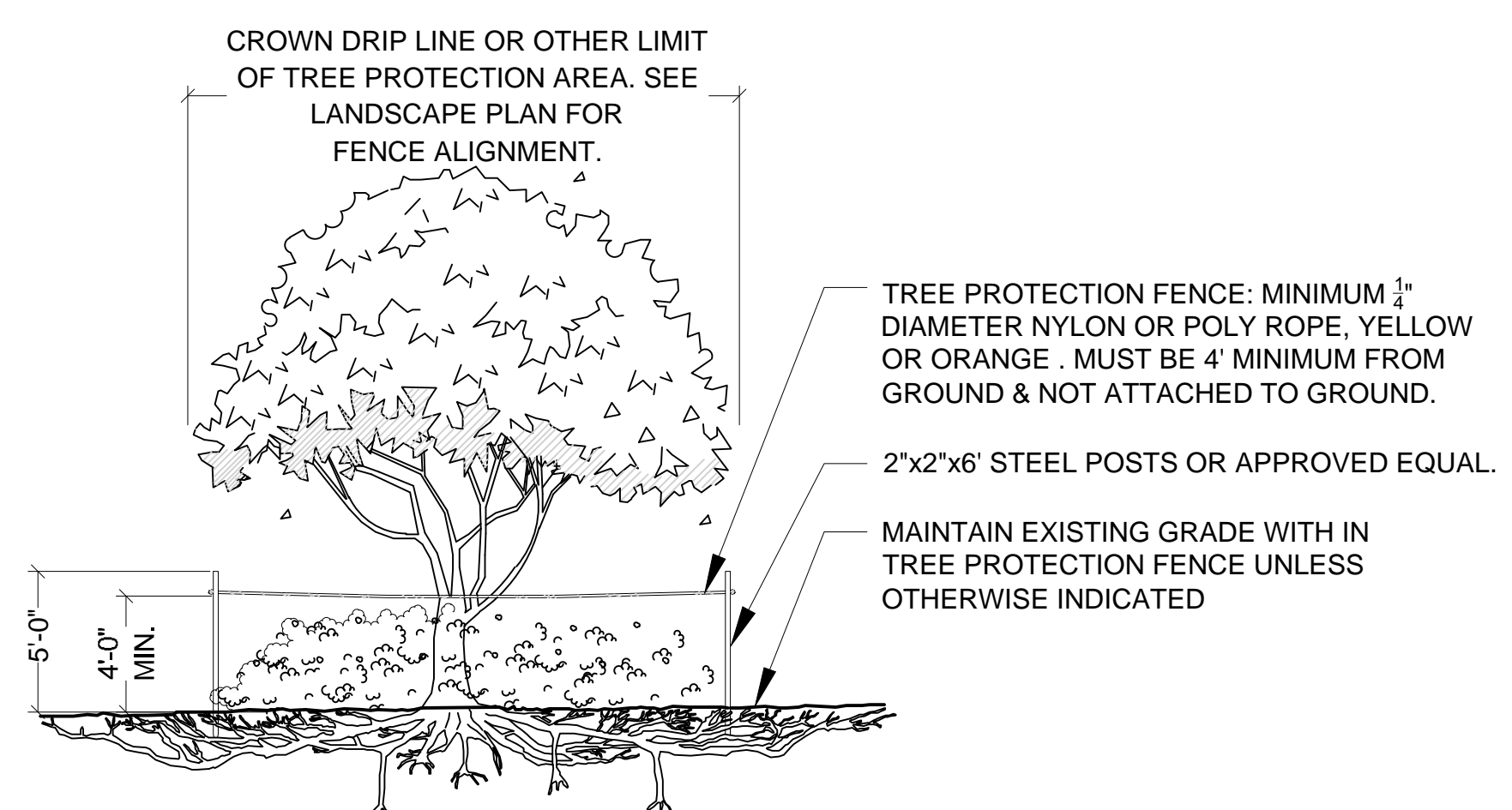


**DRAINAGE TESTING DETAIL**  
 NOT TO SCALE



**SPECIAL APPLICATIONS ROOT BARRIER DETAIL**  
 NOT TO SCALE

- NOTES:  
 1- ROOT BARRIER SHALL BE INSTALLED WHEN ROOT BALL IS LOCATED WITHIN 8' OF PAVEMENT AND OR CURB.  
 2- ROOT BARRIER SHALL BE "BIO-BARRIER 29" DEPTH OR APPROVED EQUAL.  
 3- ROOT BARRIER SHALL BE INSTALLED PER MANUFACTURE'S SPECIFICATIONS AND RECOMMENDATIONS.



**TREE PROTECTION BARRICADE**  
 NOT TO SCALE

- NOTES:  
 1- SEE LANDSCAPE PLAN FOR FENCE ALIGNMENT.  
 3- NO PRUNING SHALL BE PERFORMED EXCEPT BY APPROVED ARBORIST.  
 4- NO EQUIPMENT SHALL OPERATE INSIDE THE PROTECTIVE FENCING INCLUDING DURING FENCE INSTALLATION AND REMOVAL.

**DRAINAGE TESTING/DRAINAGE CHANNEL REQUIREMENTS.**

PRIOR TO PLANTING, ALL PLANTING PITS SELECTED FOR TESTING SHALL BE TESTED IN THE FOLLOWING MANNER.

- DIG EACH PLANTING PIT TO THE MINIMUM SPECIFIED SIZE.
- FILL PLANTING PIT WITH TWELVE INCHES (12") OF WATER. IF THE WATER LEVEL DROPS FOUR (4") OR MORE WITHIN FOUR (4) HOURS, THE DRAINAGE IS SUFFICIENT AND A DRAINAGE CHANNEL IS NOT REQUIRED. IF THE WATER LEVEL DROPS LESS THAN FOUR INCHES (4") WITHIN THE FOUR (4) HOUR PERIOD, A DRAINAGE CHANNEL IS REQUIRED.
- WHERE REQUIRED, THE DRAINAGE CHANNEL MUST EXTEND DOWN THROUGH THE NON POROUS SOIL AND INTO POROUS SOIL. (SEE DETAIL)
- ALL MATERIAL REMOVED FROM THE DRAINAGE CHANNEL SHALL BE DISCARDED.
- WHEN BACKFILLING PLANTING PITS WITH NATIVE TOPSOIL, CARE MUST BE TAKEN TO KEEP THE CONSISTENCY OF THE SOIL MIX THE SAME THROUGHOUT THE PLANTING PIT AND DRAINAGE CHANNEL.

Key / Location:  
  
 PROJECT LOCATION  
 N.T.S.

Project Team:  
**Client & Property Owner:** Pulte Group  
 4400 PGA Blvd, Suite 700  
 Palm Beach Gardens, FL 33410  
 561-625-6905  
**Landscape Architect:** Lucido & Associates  
 701 E Ocean Boulevard  
 Stuart, FL 34994  
**Engineer:** Kimley Horn  
 445 24th Street, Suite 200  
 Vero Beach, FL 32960

Not Reviewed by PSLUSD

**Pulte at Tradition Phase 2 Landscape Plan**

Port St. Lucie, Florida  
 Landscape Details  
 City of Port St Lucie P19-121  
 PSLUSD No. 5308B

Date	By	Description
8/19/20	SAW	Initial Submittal
10/21/20	SAW	Response to comments
12/2/20	SAW	Response to comments

SCALE: 1" = n/a  
  
 REG. # 1018  
 Thomas P. Lucido

Designer JJ Sheet  
 Manager SG  
 Project Number 17-640  
 Municipal Number ---  
 Computer File  
**LA-10**

