

Project Team:

Owner:  
 City of Port St. Lucie  
 121 SW Port St Lucie Blvd  
 Port St. Lucie, FL 34984

Developer:  
 Mattamy Homes  
 2500 Quantum Lakes Drive, Suite 215  
 Boynton Beach, FL 33426  
 561-739-7902

Engineer:  
 HSG Group, Inc.  
 1001 Yamato Road, Suite 105  
 Boca Raton, Florida 33431

Surveyor:  
 Caulfield & Wheeler, Inc.  
 7900 Glades Road, Suite 100  
 Boca Raton, FL 33434  
 561-392-1991

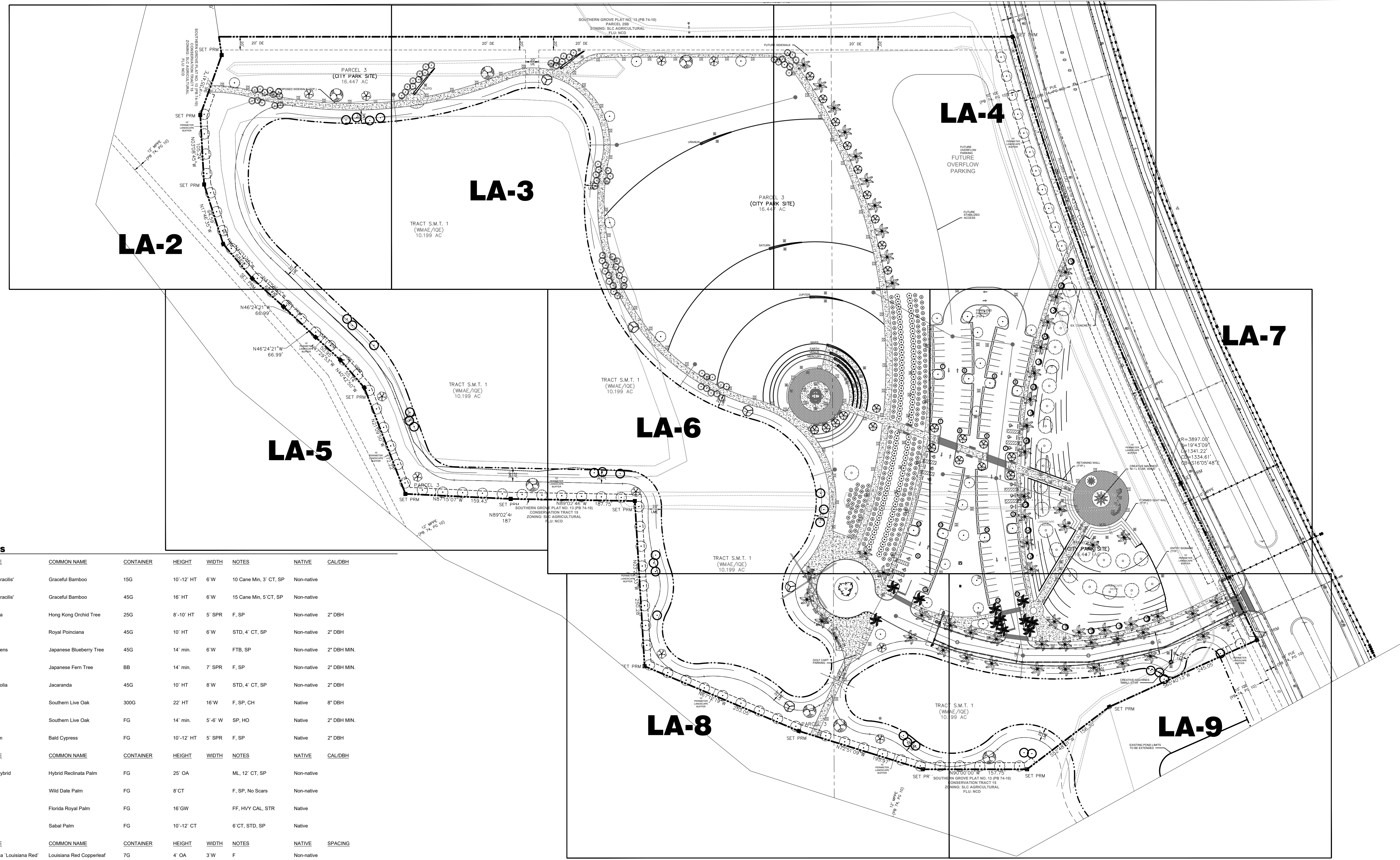
Landscape Architect/Land Planner:  
 Lucido & Associates  
 701 E Ocean Blvd  
 Stuart, FL 34904  
 772-220-2100

Mattamy Homes  
 Stars & Stripes  
 Park

Tradition, Florida

Landscape Plan  
 PSLUSD # 5218C

Date	By	Description
06.14.22	PG	Initial Submittal
09.06.22	KV	Resubmittal
01.17.23	KV	Resubmittal
05.15.23	KV	Resubmittal
08.04.23	KV	Resubmittal
10.04.23	KV	Resubmittal



PLANT SCHEDULE STARS & STRIPES

TREES	CODE	QTY	BOTANICAL NAME	COMMON NAME	CONTAINER	HEIGHT	WIDTH	NOTES	NATIVE	CA/DBH
	BG15	182	Bambusa textilis 'Gracilis'	Graceful Bamboo	15G	10'-12' HT	6' W	10 Cane Min, 3' CT, SP	Non-native	
	BG	99	Bambusa textilis 'Gracilis'	Graceful Bamboo	45G	16' HT	6' W	15 Cane Min, 5' CT, SP	Non-native	
	BB	5	Bauhinia x blakeana	Hong Kong Orchid Tree	25G	6'-10' HT	5' SPR	F, SP	Non-native	2' DBH
	DR	10	Delonix regia	Royal Poinciana	45G	10' HT	6' W	STD, 4' CT, SP	Non-native	2' DBH
	EDL	15	Elaeocarpus decipiens	Japanese Blueberry Tree	45G	14' min.	6' W	FTB, SP	Non-native	2' DBH MIN.
	FD	23	Filicium decipiens	Japanese Fern Tree	BB	14' min.	7' SPR	F, SP	Non-native	2' DBH MIN.
	JM	7	Jacaranda mimosifolia	Jacaranda	45G	10' HT	8' W	STD, 4' CT, SP	Non-native	2' DBH
	QV8	24	Quercus virginiana	Southern Live Oak	300G	22' HT	16' W	F, SP, CH	Native	6' DBH
	QV2	105	Quercus virginiana	Southern Live Oak	FG	14' min.	5'-6' W	SP, HO	Native	2' DBH MIN.
	TDM	29	Taxodium distichum	Bald Cypress	FG	10'-12' HT	5' SPR	F, SP	Native	2' DBH
PALMS	CODE	QTY	BOTANICAL NAME	COMMON NAME	CONTAINER	HEIGHT	WIDTH	NOTES	NATIVE	CA/DBH
	PRL	1	Phoenix recinata hybrid	Hybrid Redtina Palm	FG	25' OA		ML, 12' CT, SP	Non-native	
	PS	11	Phoenix sylvestris	Wild Date Palm	FG	8' CT		F, SP, No Scars	Non-native	
	RYY	58	Roystonea elata	Florida Royal Palm	FG	16' GW		FF, HVY CAL, STR	Native	
	SP	72	Sabal palmetto	Sabal Palm	FG	10'-12' CT		6' CT, STD, SP	Native	
SHRUBS	CODE	QTY	BOTANICAL NAME	COMMON NAME	CONTAINER	HEIGHT	WIDTH	NOTES	NATIVE	SPACING
	ACA	205	Acalypha wilkesiana 'Louisiana Red'	Louisiana Red Copperleaf	7G	4' OA	3' W	F	Non-native	
	AAB	10	Agave americana	Blue Agave	25G	3' HT	3' W	F	Non-native	
	ABS	23	Andropogon skinneri	Big Red Bromeliad	7G	30' OA		SP	Non-native	
	CE3B	1,153	Conocarpus erectus	Buttonwood	3G	36' HT	30' W	FTB, SP	Native	
	CSS	138	Conocarpus erectus 'Sericeus'	Silver Buttonwood	7G	4' HT	3' W	F	Native	
	FG	8	Furcraea foelida 'Variegata'	Variegated False Agave	15G	3' HT	3' W	F	Non-native	
	HAM	158	Hamelia patens	Firebush	3G	36' HT	30' W	FTB	Non-native	
	JJ	701	Jasminum volubile	Wax Jasmine	3G	24' HT	24' W	F	Native	
	JAT	27	Jatropha integririma	Jatropha	15G	4' HT	3' W	STD, SP	Non-native	
	MCG	604	Muhlenbergia capillaris	Pink Muhly Grass	3G	2' HT	2' W	F	Native	
	NCR	261	Neoregelia cruenta 'Rubra'	Red Cruenta Bromeliad	9' POT	12' OA		F, SP	Non-native	
	NBV	71	Neoregelia x 'Bossa Nova'	Bossa Nova Bromeliad	9' POT	12' HT	12' W	F	Non-native	
	PSG	152	Penstemon setaceus 'White'	White Fountain Grass	3G	18' HT	18' W	F	Non-native	
	PLI	261	Plumbago auriculata 'Imperial Blue'	Plumbago	3G	24' HT	24' W	F, SP	Non-native	
	PM	339	Podocarpus macrophyllus	Yew Pine	5G, 36" OA, F, SP					
GRASSES	CODE	QTY	BOTANICAL NAME	COMMON NAME	CONTAINER	HEIGHT	WIDTH	NOTES	NATIVE	SPACING
	SPB	1,040	Spartina bakeri	Sand Cordgrass	3G	18" OA		F	Native	36" o.c.
GROUND COVERS	CODE	QTY	BOTANICAL NAME	COMMON NAME	CONTAINER	HEIGHT	WIDTH	NOTES	NATIVE	SPACING
	EB	944	Evolvulus glomeratus 'Blue Daze'	Brazilian Dwarf Morning Glory	3G, 18" OA, F,					18" o.c.
	GIF	762	Ficus microcarpa 'Green Island'	Green Island Ficus	1G	12' HT	12' W	Full		18" o.c.

**Required Trees:**

	Native	Species	Flowering	Drought Tolerant	Palm
Perimeter: (3,934/30)	131	50%=65			
Parking Lot Terminal Landscape Islands:	24	75%=18			
<b>Total:</b>	<b>155</b>	<b>83</b>	<b>5</b>	<b>20%=31</b>	<b>50%=77</b>

**Provided Trees:**

	Native	Species	Flowering	Drought Tolerant	Palm
<b>Total:</b>	<b>266</b>	<b>129</b>	<b>5</b>	<b>38</b>	<b>129</b>

**Required Shrubs:**

	Native	Drought Tolerant
Perimeter: (3,934/2)	1,967	25%=491
<b>Total:</b>	<b>4,192</b>	<b>1,451</b>

GENERAL LANDSCAPE NOTES:

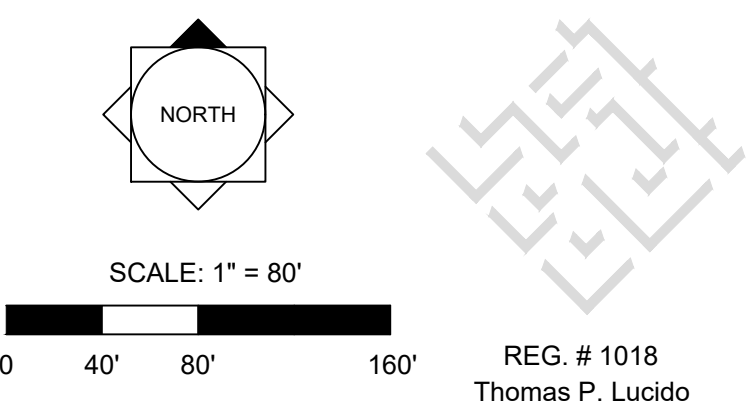
- All landscaping at intersection and corners complies with section 158.204 of the port st lucie code of ordinances to provide a clear sight zone between 2' - 6' above the final road crown elevation. all hedges and shrubs with in the 25' sight triangle will be maintained at a height no higher than 2' above the crown elevation of the road. in addition, the foliage line any tree within the 25' sight triangle will maintained at a height of no less than 6' above the road crown.
- At least 50% of all required trees shall be of a native species.
- All planting beds to be covered with dewitt landscape fabric & receive 4" of mulch
- All plant material to be florida no. 1 or better.
- All landscape & sod areas to be irrigated by an automated system

PSLUSD NOTES FOR LANDSCAPE PLANS

- No landscaping shall be planted in a manner that would adversely affect utility easements. Landscaping shall be in compliance with Chapter 154 of the City of Port St. Lucie Code of Ordinances, PSLUSD technical specifications and policies.
- All landscaping within City utility easements shall comply with PSLUSD technical specifications, policies, and codes.
- All landscaping shall meet the latest PSLUSD Landscape Policy and shall not be placed in a manner that would create conflicts with the intended operation and maintenance of any existing utility.
- Trees shall not be planted within ten (10) feet of any PSLUSD underground infrastructure.
- No landscaping other than sod grasses shall be located within 5' of a PSLUSD appurtenance such as a water meter assembly, backflow device, fire hydrant or sewer cleanout, etc.

Sheet Index:

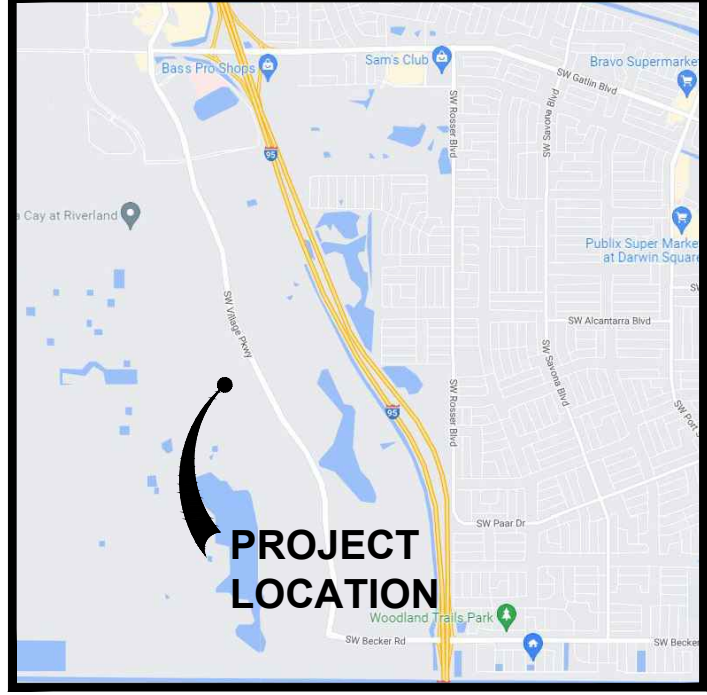
COVER	LA-1
LANDSCAPE PLAN	LA-2 - LA-9
LANDSCAPE DETAILS	LA-10
LANDSCAPE SPECIFICATIONS	LA-11



Designer	PG	Sheet
Manager	SG	<b>LA-1</b>
Project Number	20-276-20	
Municipal Number	P22-195	
Computer File	Stars and Stripes Park Landscape.dwg	



Key / Location:



Project Team:

Owner:  
 City of Port St. Lucie  
 121 SW Port St Lucie Blvd  
 Port St. Lucie, FL 34984

Developer:  
 Mattamy Homes  
 2500 Quantum Lakes Drive, Suite 215  
 Boynton Beach, FL 33426  
 561-739-7902

Engineer:  
 HSQ Group, Inc.  
 1001 Yamato Road, Suite 105  
 Boca Raton, Florida 33431

Surveyor:  
 Cauffield & Wheeler, Inc.  
 7900 Glades Road, Suite 100  
 Boca Raton, FL 33434  
 561-392-1991

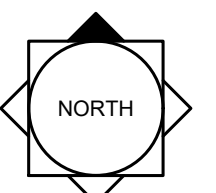
Landscape Architect/Land Planner:  
 Lucido & Associates  
 701 E Ocean Blvd  
 Stuart, FL 34904  
 772-220-2100

**Mattamy Homes**  
 Stars & Stripes  
 Park

Tradition, Florida

**Landscape Plan**  
 PSLUSD #: 5218C

Date	By	Description
06.14.22	PG	Initial Submittal
09.06.22	KV	Resubmittal
01.17.23	KV	Resubmittal
05.15.23	KV	Resubmittal
08.04.23	KV	Resubmittal
10.04.23	KV	Resubmittal



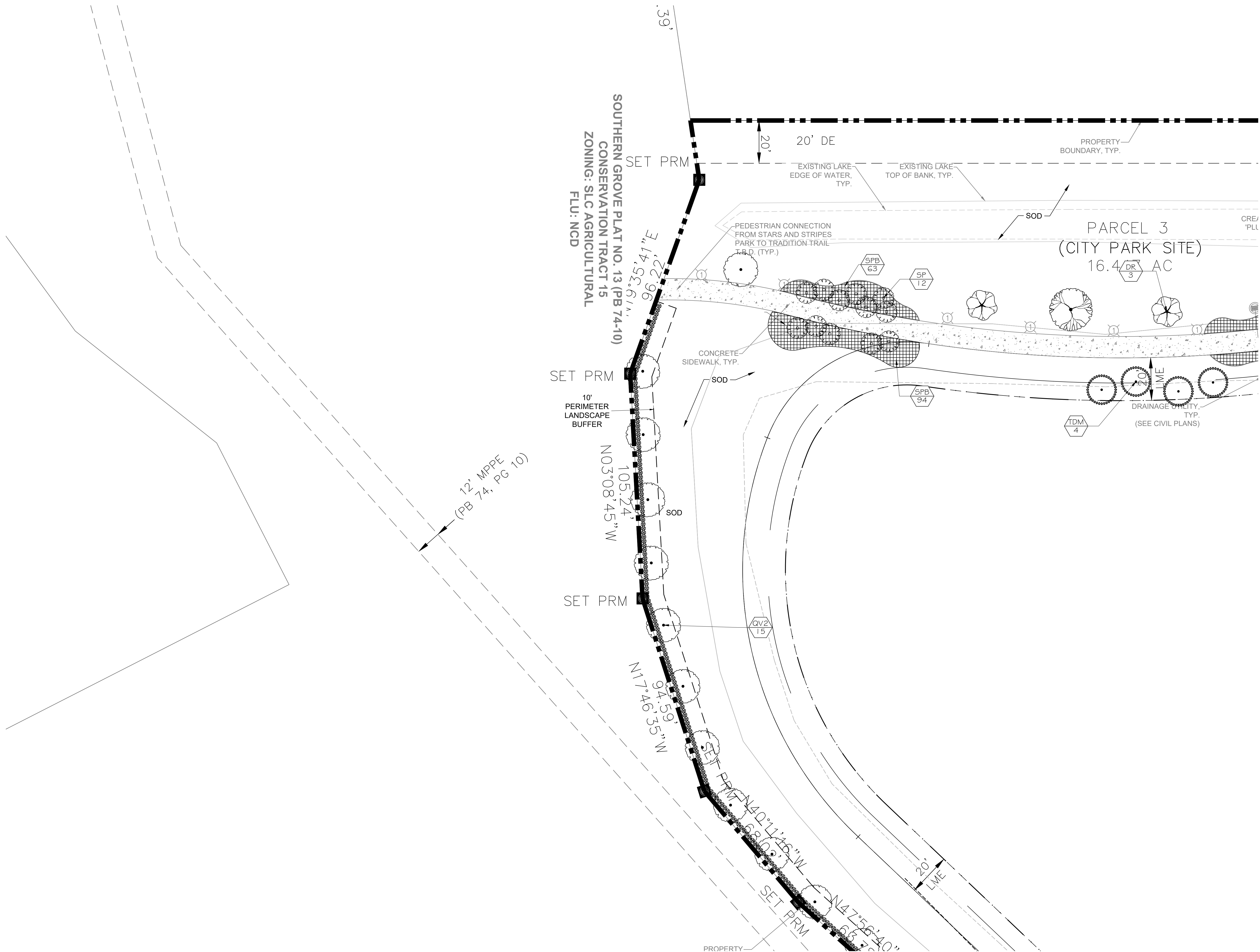
SCALE: 1" = 20'  
 0 10' 20' 40'



REG. # 1018  
 Thomas P. Lucido

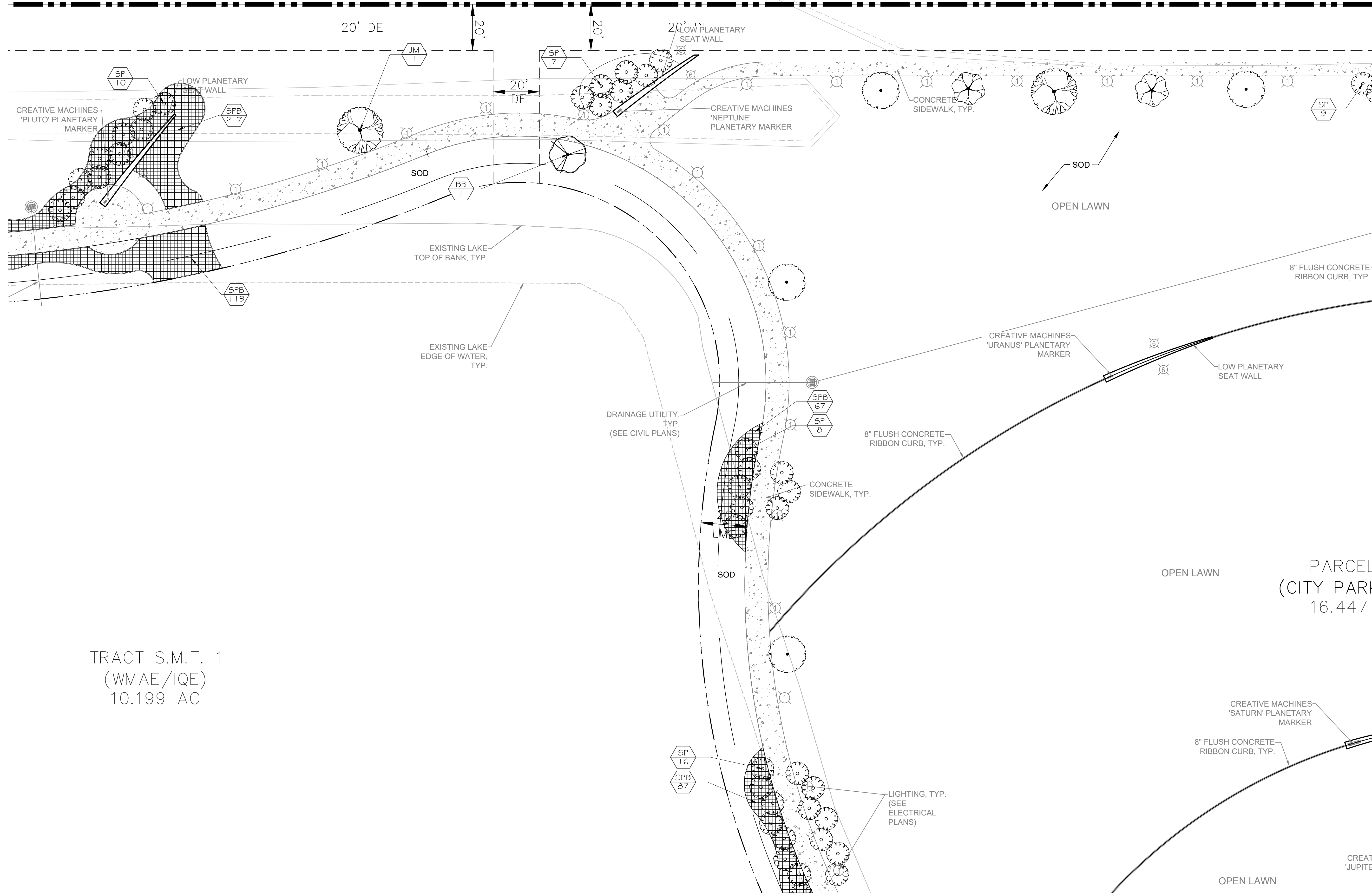
Designer PG Sheet  
 Manager SG  
 Project Number 20-276.20  
 Municipal Number P22-195  
 Computer File Stars and Stripes Park Landscape.dwg

**LA-2**





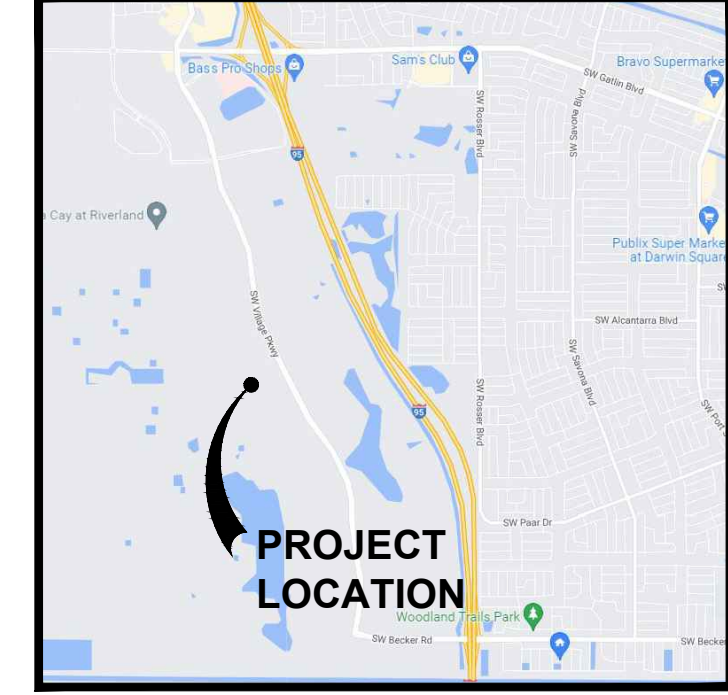
**SOUTHERN GROVE PLAT NO. 13 (PB 74-10)  
 PARCEL 25B  
 ZONING: SLC AGRICULTURAL  
 FLU: NCD**



TRACT S.M.T. 1  
 (WMAE/IQE)  
 10.199 AC

PARCEL  
 (CITY PARK)  
 16.447

**Key / Location:**



**Project Team:**

**Owner:**  
 City of Port St. Lucie  
 121 SW Port St. Lucie Blvd  
 Port St. Lucie, FL 34984

**Developer:**  
 Mattamy Homes  
 2500 Quantum Lakes Drive, Suite 215  
 Boynton Beach, FL 33426  
 561-739-7302

**Engineer:**  
 HSO Group, Inc.  
 1001 Yamato Road, Suite 105  
 Boca Raton, Florida 33431

**Surveyor:**  
 Cauffman & Wheeler, Inc.  
 7900 Glades Road, Suite 100  
 Boca Raton, FL 33434  
 561-392-1991

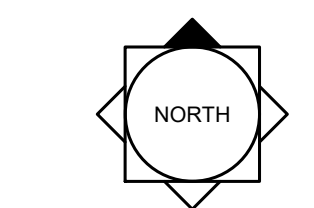
**Landscape Architect/Land Planner:**  
 Lucido & Associates  
 701 E Ocean Blvd  
 Stuart, FL 34904  
 772-220-2100

**Mattamy Homes  
 Stars & Stripes  
 Park**

Tradition, Florida

**Landscape Plan  
 PSLUSD #: 5218C**

Date	By	Description
06.14.22	PG	Initial Submittal
09.08.22	KV	Resubmittal
01.17.23	KV	Resubmittal
05.15.23	KV	Resubmittal
08.04.23	KV	Resubmittal
10.04.23	KV	Resubmittal



SCALE: 1" = 20'  
 0 10' 20' 40'



REG. # 1018  
 Thomas P. Lucido

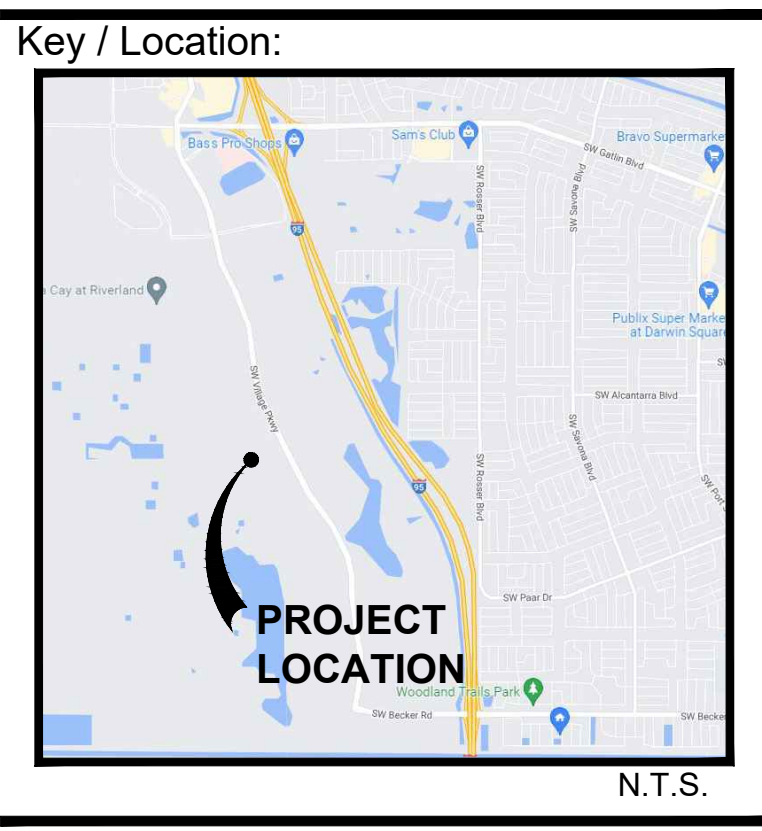
Designer	PG	Sheet
Manager	SG	
Project Number	20-276.20	
Municipal Number	P22-195	
Computer File	Stars and Stripes Park Landscape.dwg	

**LA-3**









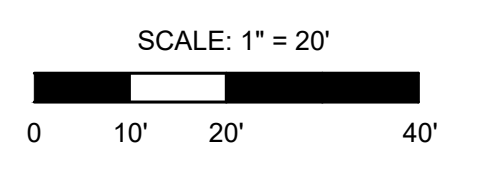
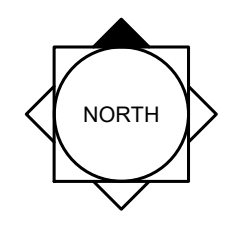
**Project Team:**  
 Owner:  
 City of Port St. Lucie  
 121 SW Port St. Lucie Blvd  
 Port St. Lucie, FL 34984  
 Developer:  
 Mattamy Homes  
 2500 Quantum Lakes Drive, Suite 215  
 Boynton Beach, FL 33426  
 561-739-7902  
 Engineer:  
 HSO Group, Inc.  
 1001 Yamato Road, Suite 105  
 Boca Raton, Florida 33431  
 Surveyor:  
 Cauffman & Wheeler, Inc.  
 7900 Glades Road, Suite 100  
 Boca Raton, FL 33434  
 561-392-1991  
 Landscape Architect/Land Planner:  
 Lucido & Associates  
 701 E Ocean Blvd  
 Stuart, FL 34904  
 772-220-2100

**Mattamy Homes**  
**Stars & Stripes**  
**Park**

Tradition, Florida

**Landscape Plan**  
 PSLUSD #: 5218C

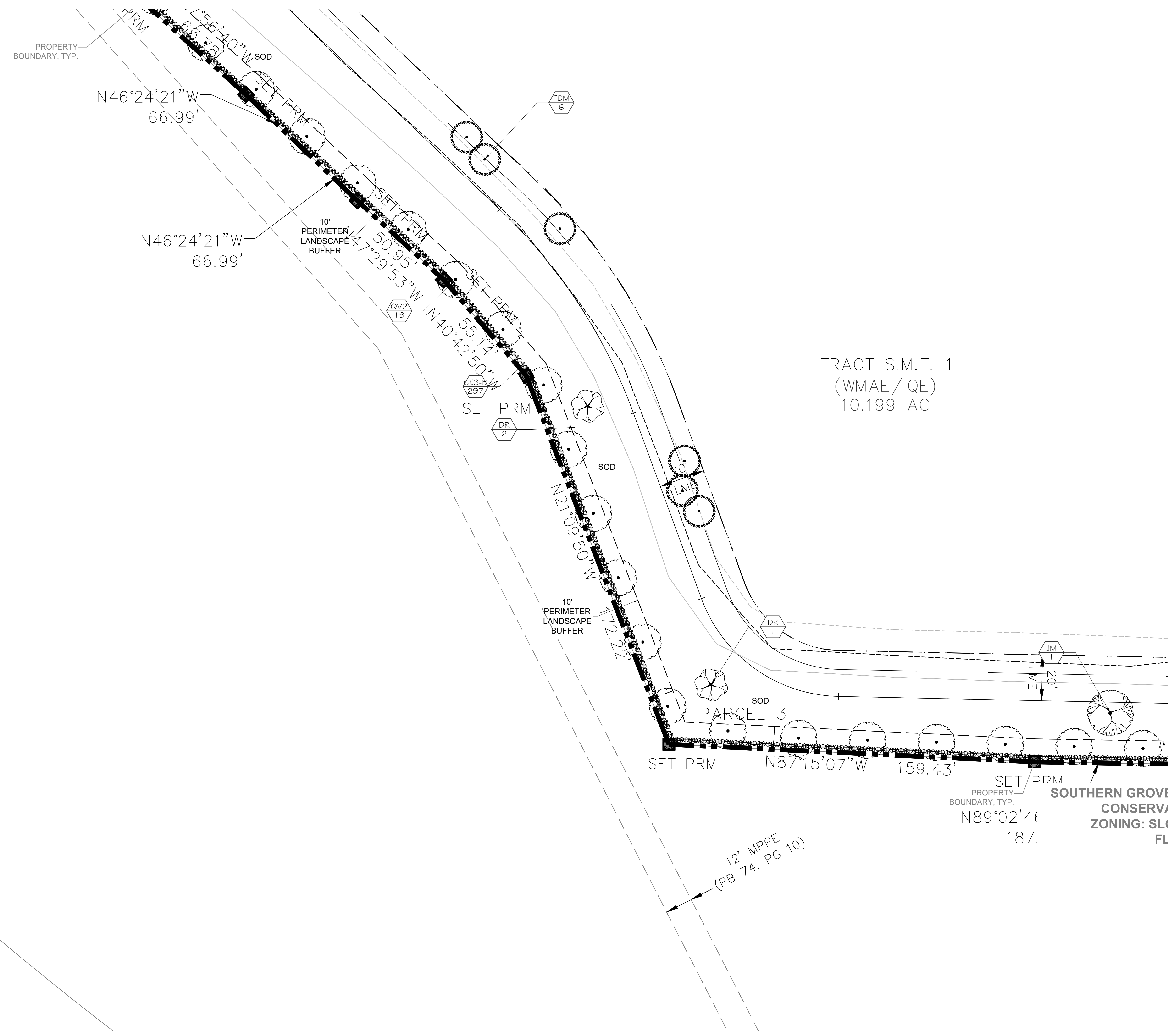
Date	By	Description
06.14.22	PG	Initial Submittal
09.08.22	KV	Resubmittal
01.17.23	KV	Resubmittal
05.15.23	KV	Resubmittal
08.04.23	KV	Resubmittal
10.04.23	KV	Resubmittal



Designer	PG	Sheet
Manager	SG	
Project Number	20-276.20	
Municipal Number	P22-195	
Computer File	Stars and Stripes Park Landscape.dwg	

**LA-5**

© Copyright Lucido & Associates. These documents and their contents are the property of Lucido & Associates. Any reproductions, revisions, modifications or use of these documents without the express written consent of Lucido & Associates is prohibited by law.



TRACT S.M.T. 1  
 (WMAE/IQE)  
 10.199 AC

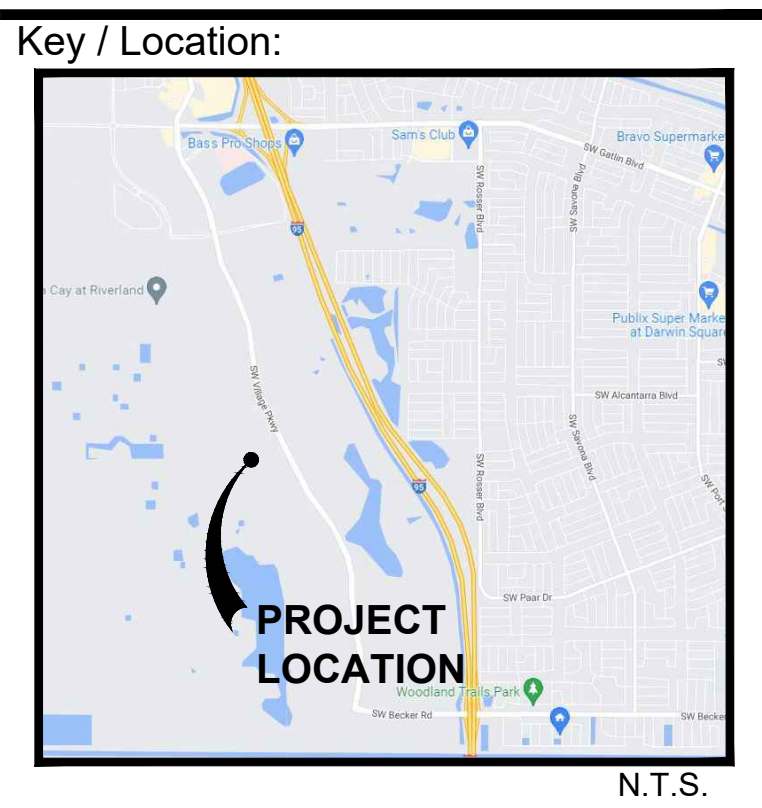












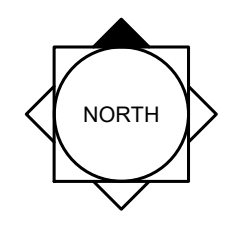
**Project Team:**  
 Owner:  
 City of Port St. Lucie  
 121 SW Port St. Lucie Blvd  
 Port St. Lucie, FL 34984  
 Developer:  
 Mattamy Homes  
 2500 Quantum Lakes Drive, Suite 215  
 Boynton Beach, FL 33426  
 561-739-7902  
 Engineer:  
 HSO Group, Inc.  
 1001 Yamato Road, Suite 105  
 Boca Raton, Florida 33431  
 Surveyor:  
 Caulfield & Wheeler, Inc.  
 7900 Glades Road, Suite 100  
 Boca Raton, FL 33434  
 561-392-1991  
 Landscape Architect/Land Planner:  
 Lucido & Associates  
 701 E Ocean Blvd  
 Stuart, FL 34904  
 772-220-2100

**Mattamy Homes**  
 Stars & Stripes  
 Park

Tradition, Florida

**Landscape Plan**  
 PSLUSD #: 5218C

Date	By	Description
06.14.22	PG	Initial Submittal
09.08.22	KV	Resubmittal
01.17.23	KV	Resubmittal
05.15.23	KV	Resubmittal
08.04.23	KV	Resubmittal
10.04.23	KV	Resubmittal



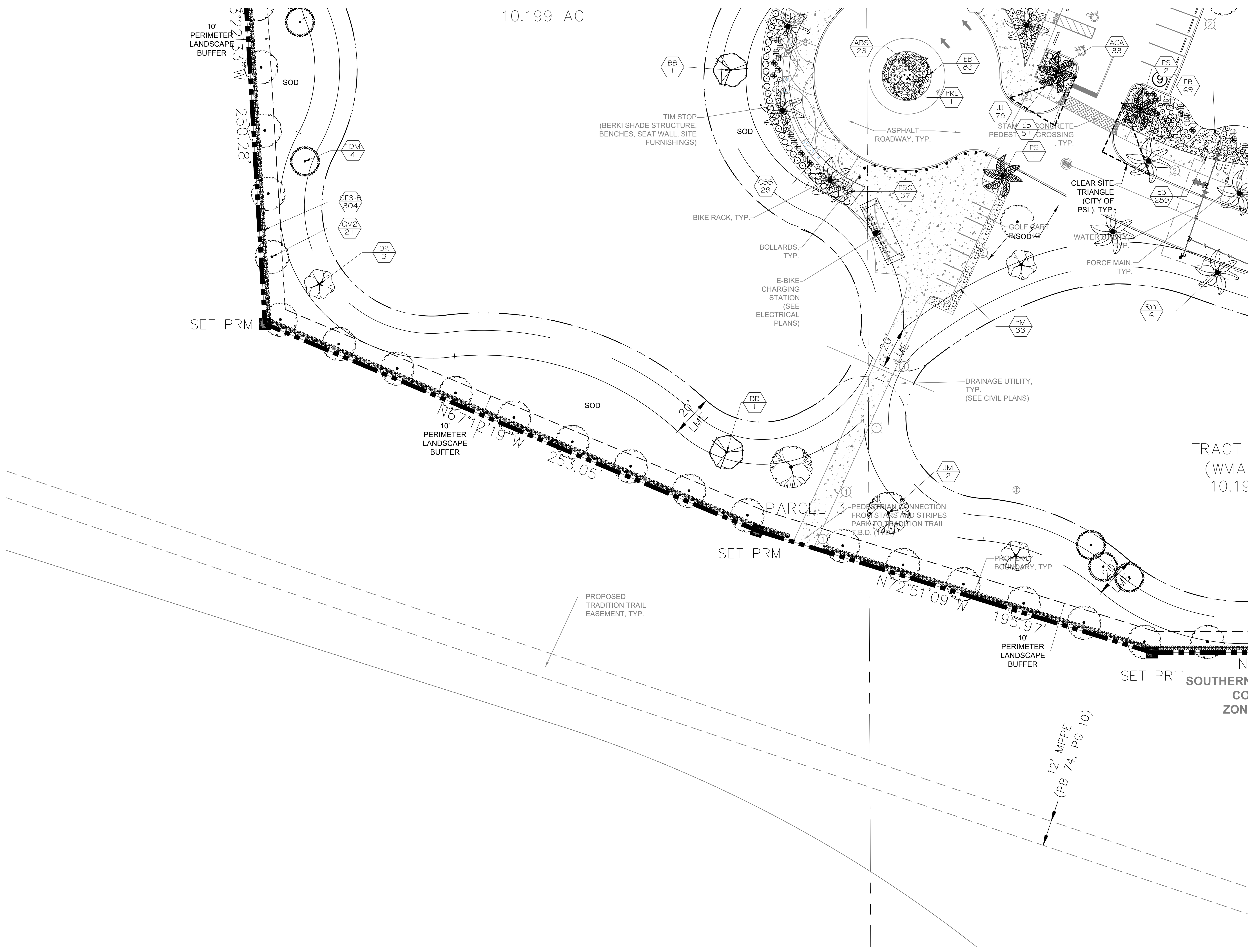
SCALE: 1" = 20'  
 0 10' 20' 40'



Designer PG Sheet  
 Manager SG  
 Project Number 20-276.20  
 Municipal Number P22-195  
 Computer File Stars and Stripes Park Landscape.dwg

**LA-8**

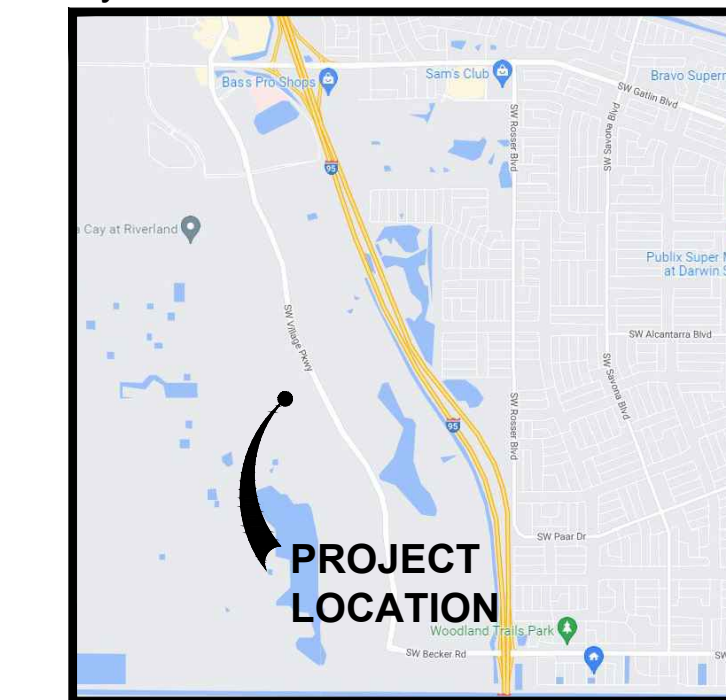
© Copyright Lucido & Associates. These documents and their contents are the property of Lucido & Associates. Any reproductions, revisions, modifications or use of these documents without the express written consent of Lucido & Associates is prohibited by law.



Dwelling Name: C:\Users\jgiles\OneDrive\Documents\jgiles\LA-8\LA-8.dwg, 10/18/2023 - 11:05:00 AM and Stars and Stripes Park Landscape.dwg



**Key / Location:**



**Project Team:**

**Owner:**  
City of Port St. Lucie  
121 SW Port St. Lucie Blvd  
Port St. Lucie, FL 34984

**Developer:**  
Mattamy Homes  
2500 Quantum Lakes Drive, Suite 215  
Boynton Beach, FL 33426  
561-739-7302

**Engineer:**  
HSQ Group, Inc.  
1001 Yamato Road, Suite 105  
Boca Raton, Florida 33431

**Surveyor:**  
Caulfield & Wheeler, Inc.  
7900 Glades Road, Suite 100  
Boca Raton, FL 33434  
561-392-1991

**Landscape Architect/Land Planner:**  
Lucido & Associates  
701 E Ocean Blvd  
Stuart, FL 34904  
772-220-2100

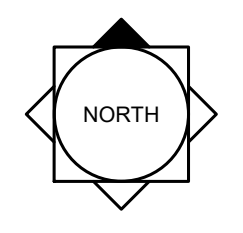
**Mattamy Homes  
Stars & Stripes  
Park**

Tradition, Florida

**Landscape Plan**

PSLUSD #: 5218C

Date	By	Description
06.14.22	PG	Initial Submittal
09.08.22	KV	Resubmittal
01.17.23	KV	Resubmittal
05.15.23	KV	Resubmittal
08.04.23	KV	Resubmittal
10.04.23	KV	Resubmittal



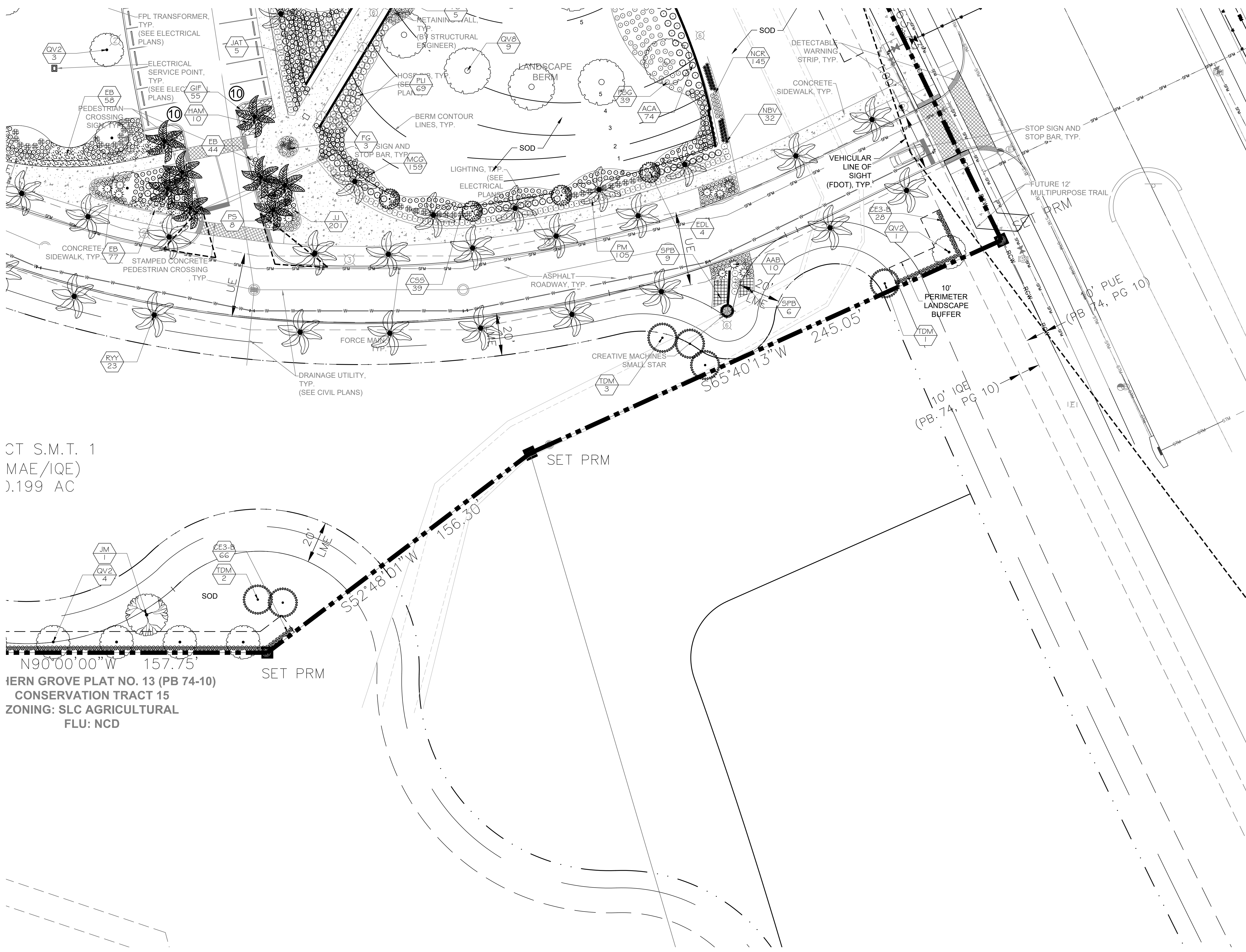
SCALE: 1" = 20'  
 0 10' 20' 40'



REG. # 1018  
Thomas P. Lucido

Designer PG Sheet  
 Manager SG  
 Project Number 20-276.20  
 Municipal Number P22-195  
 Computer File Stars and Stripes Park Landscape.dwg

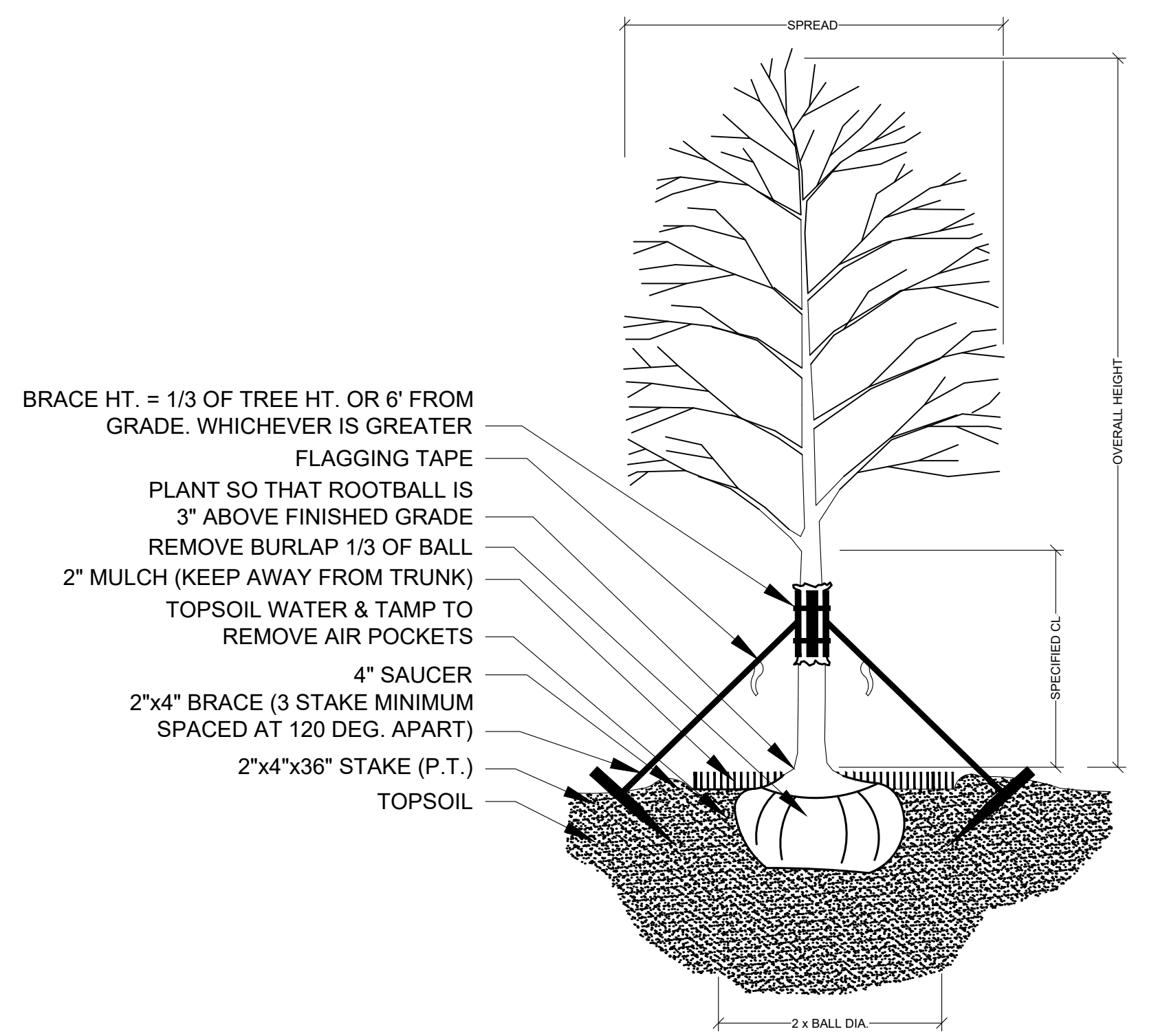
**LA-9**



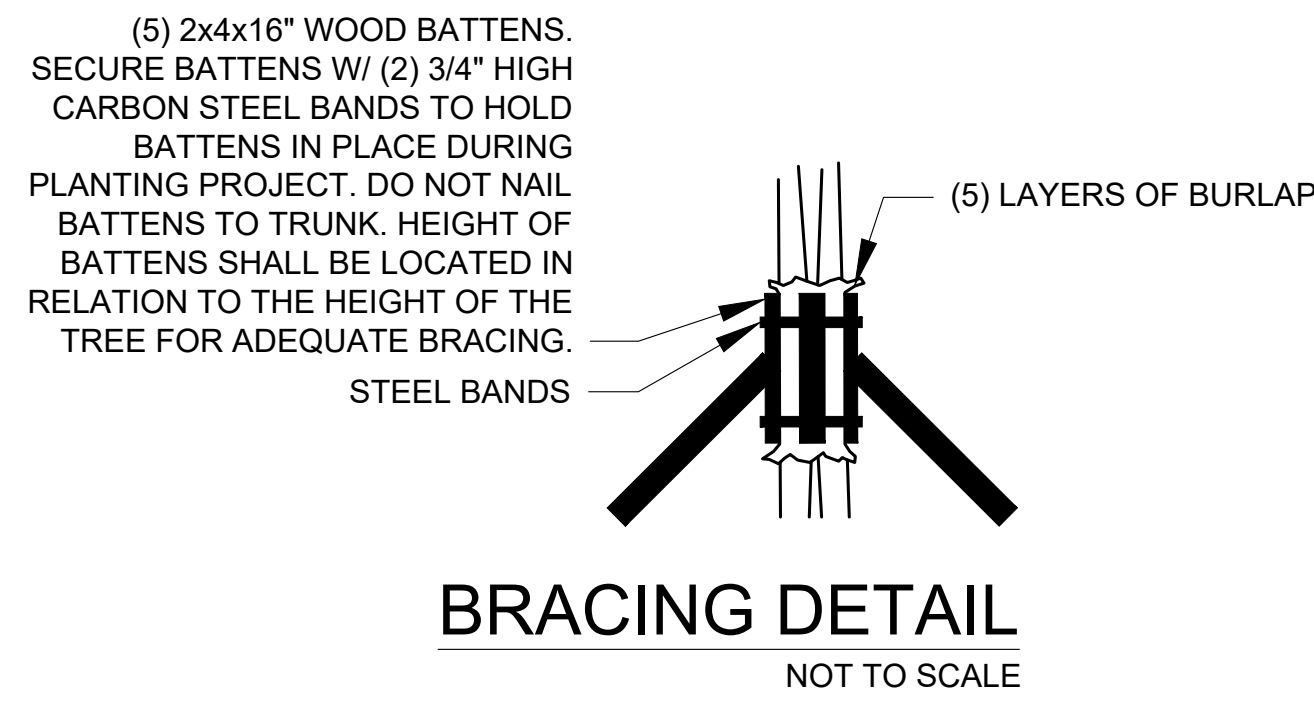
CT S.M.T. 1  
 MAE/IQE)  
 ) .199 AC

**IERN GROVE PLAT NO. 13 (PB 74-10)  
 CONSERVATION TRACT 15  
 ZONING: SLC AGRICULTURAL  
 FLU: NCD**

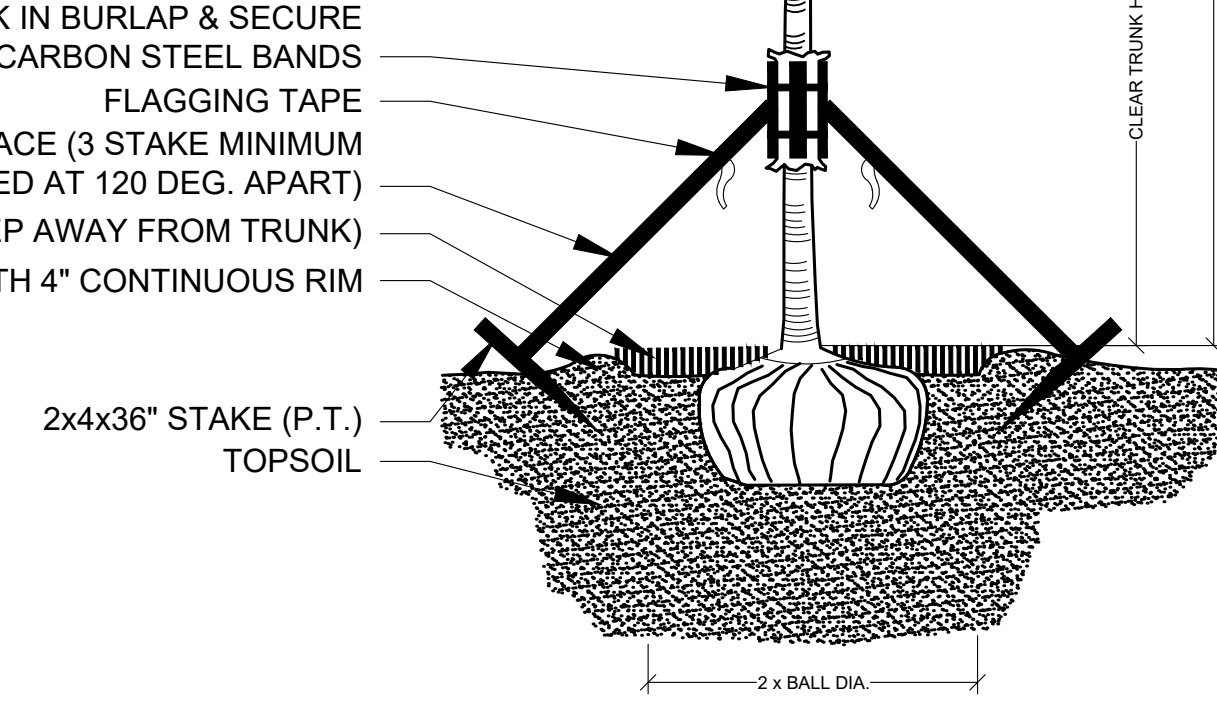




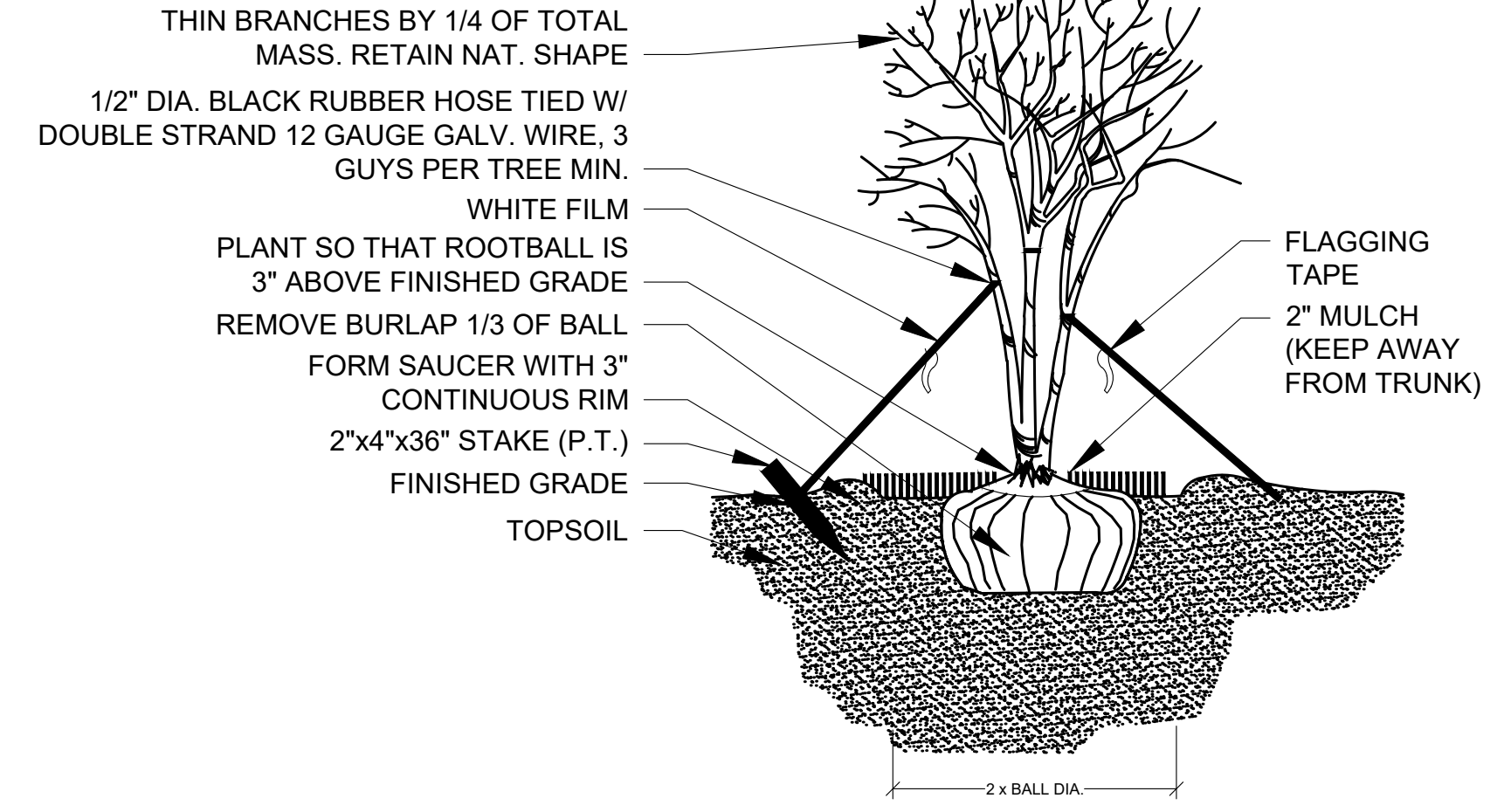
**TREE PLANTING & STAKING**  
NOT TO SCALE



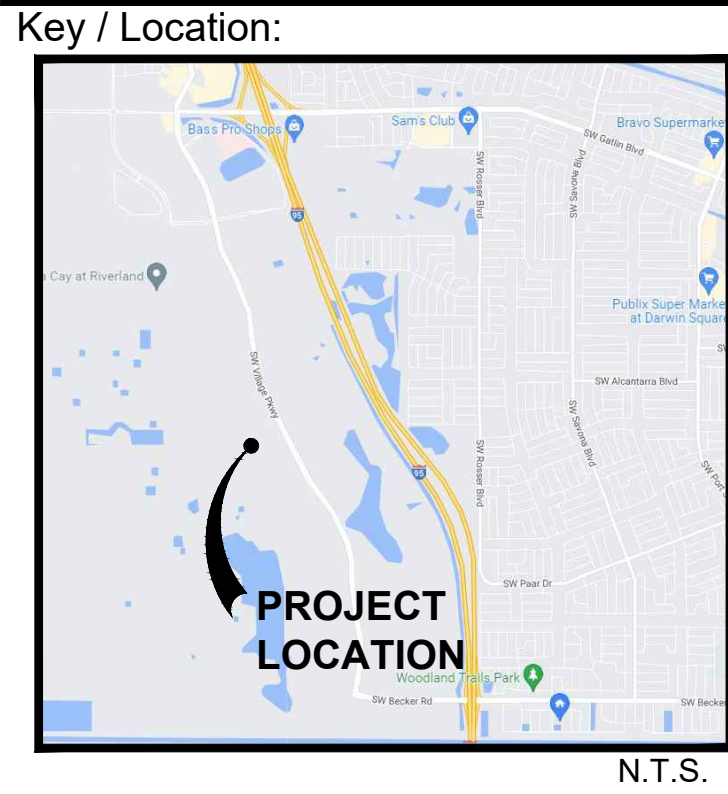
**BRACING DETAIL**  
NOT TO SCALE



**PALM PLANTING - ANGLE STAKE**  
NOT TO SCALE



**MULTI-TRUNK PLANTING & GUYING**

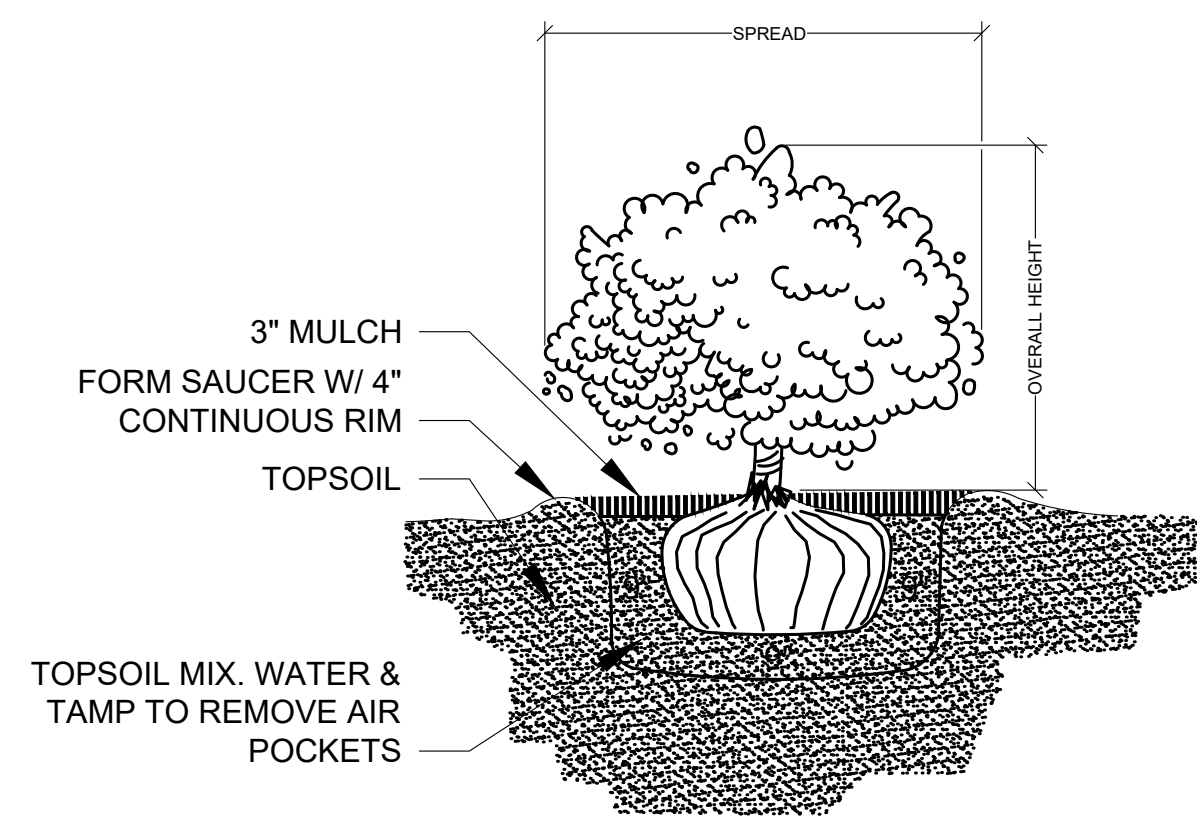


**Project Team:**  
 Owner: City of Port St. Lucie, 121 SW Port St. Lucie Blvd, Port St. Lucie, FL 34984  
 Developer: Mattamy Homes, 2500 Quantum Lakes Drive, Suite 215, Boynton Beach, FL 33426, 561-739-7902  
 Engineer: HSO Group, Inc., 1001 Yamato Road, Suite 105, Boca Raton, Florida 33431  
 Surveyor: Caulfield & Wheeler, Inc., 7900 Glades Road, Suite 100, Boca Raton, FL 33434, 561-392-1991  
 Landscape Architect/Land Planner: Lucido & Associates, 701 E Ocean Blvd, Stuart, FL 34904, 772-220-2100

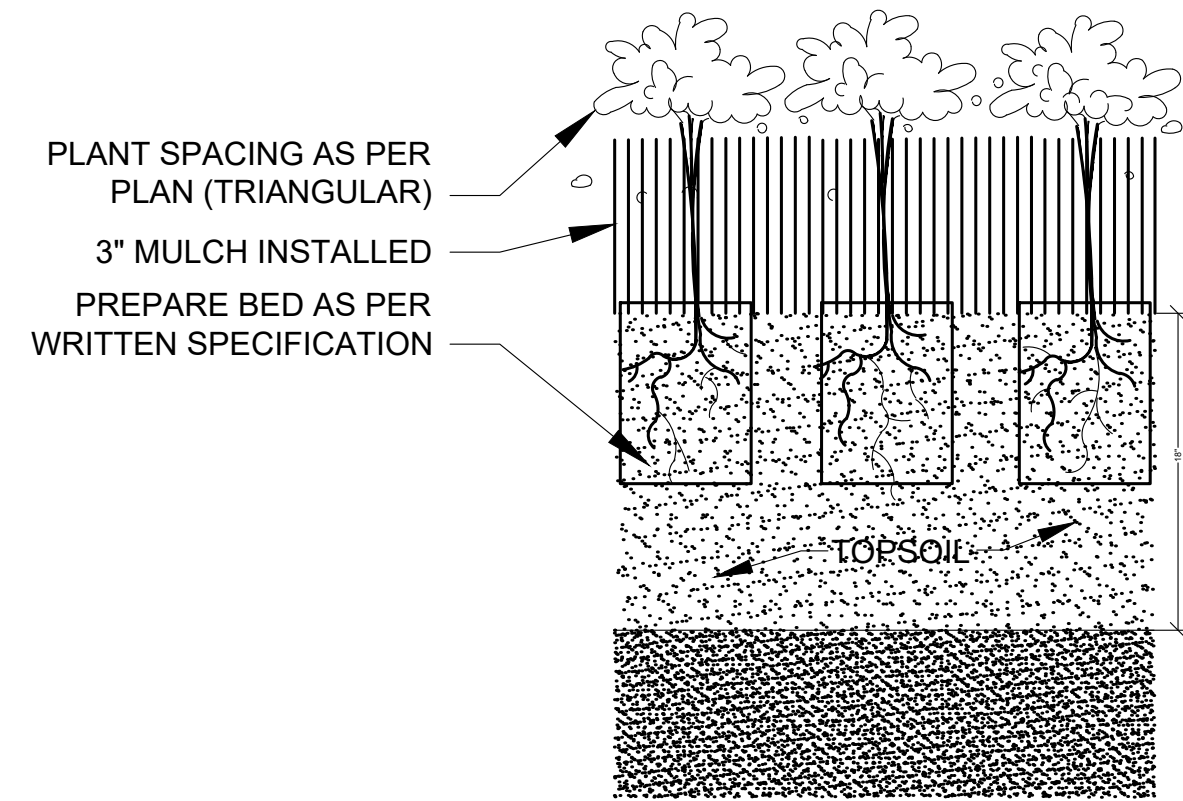
**Mattamy Homes**  
 Stars & Stripes Park  
 Tradition, Florida

**Landscape Details**  
 PLSUSD #: 5218C

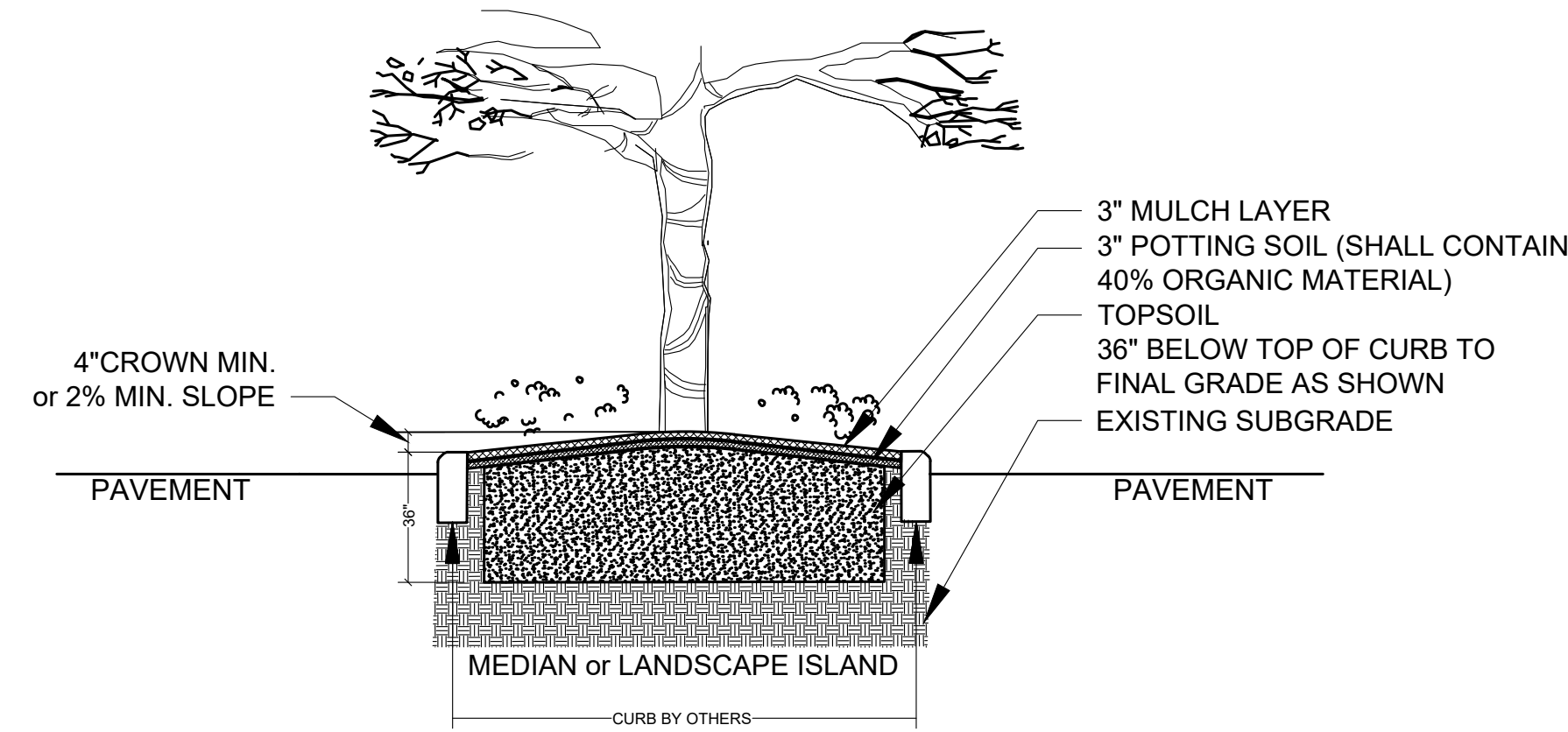
Date	By	Description
06.14.22	PG	Initial Submittal
09.08.22	KV	Resubmittal
01.17.23	KV	Resubmittal
05.15.23	KV	Resubmittal
08.04.23	KV	Resubmittal
10.04.23	KV	Resubmittal



**SHRUB PLANTING**  
NOT TO SCALE

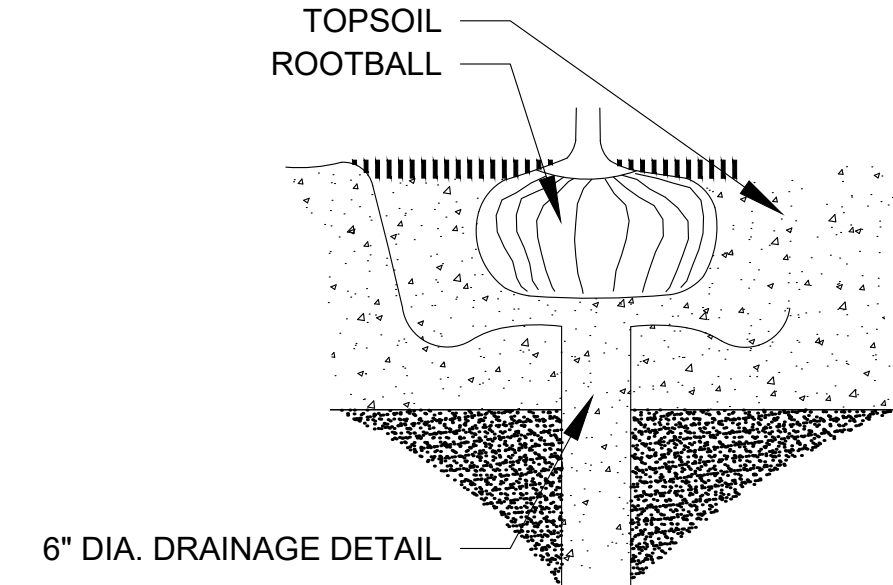


**GROUNDCOVER PLANTING DETAIL**  
NOT TO SCALE

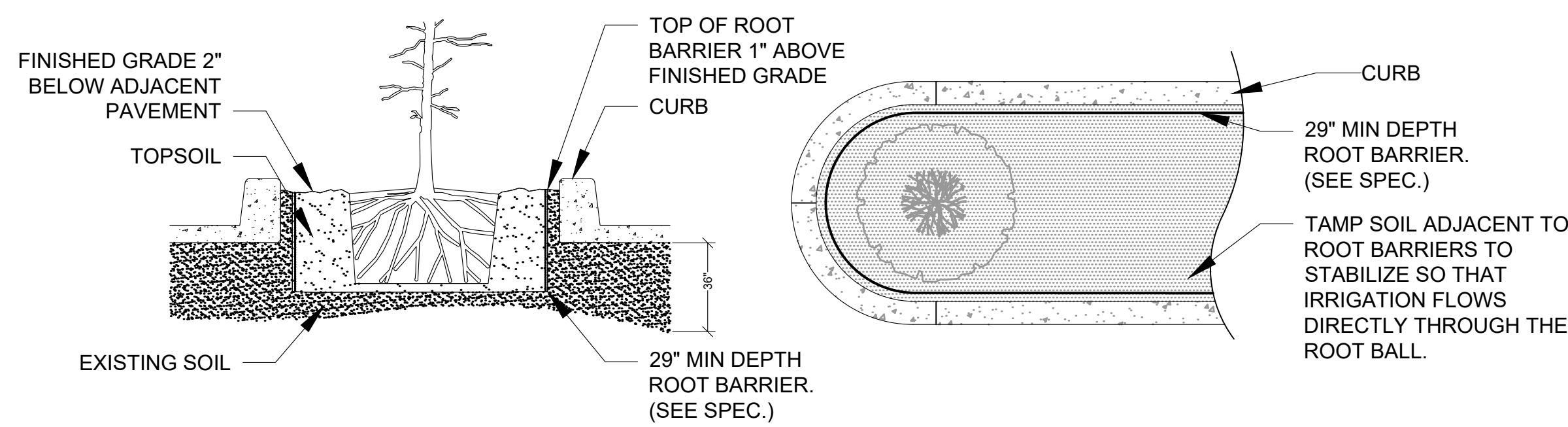


**LANDSCAPE AREA PREPARATION DETAIL**  
NOT TO SCALE

- \* TOPSOIL SHALL BE NATURAL, FRIABLE, FINE LOAMY SOIL POSSESSING CHARACTERISTICS OF REPRESENTATIVE TOPSOIL IN THE VICINITY OF THE PROJECT SITE THAT PRODUCES HEAVY GROWTH.
- TOPSOIL SHALL HAVE A PH RANGE OF 5.5-7.4, FREE FROM SUBSOIL, WEEDS, LITTER, SODS, CLAY, STONES, STUMPS, ROOTS, TRASH, HERBICIDES, TOXIC SUBSTANCES, OR ANY OTHER MATERIAL WHICH MAY BE HARMFUL TO PLANT GROWTH, OR HINDER PLANTING OPERATIONS.
- TOPSOIL SHALL CONTAIN A MINIMUM OF 3% ORGANIC MATERIAL.
- TOPSOIL MUST PERCOLATE WATER AT A RATE OF 1" PER HOUR (SEE ALSO DRAINAGE TESTING DETAIL FOR TREES)
- LANDSCAPE AREA SOILS SHALL BE APPROVED BY LANDSCAPE ARCHITECT/OWNER PRIOR TO PLANTING

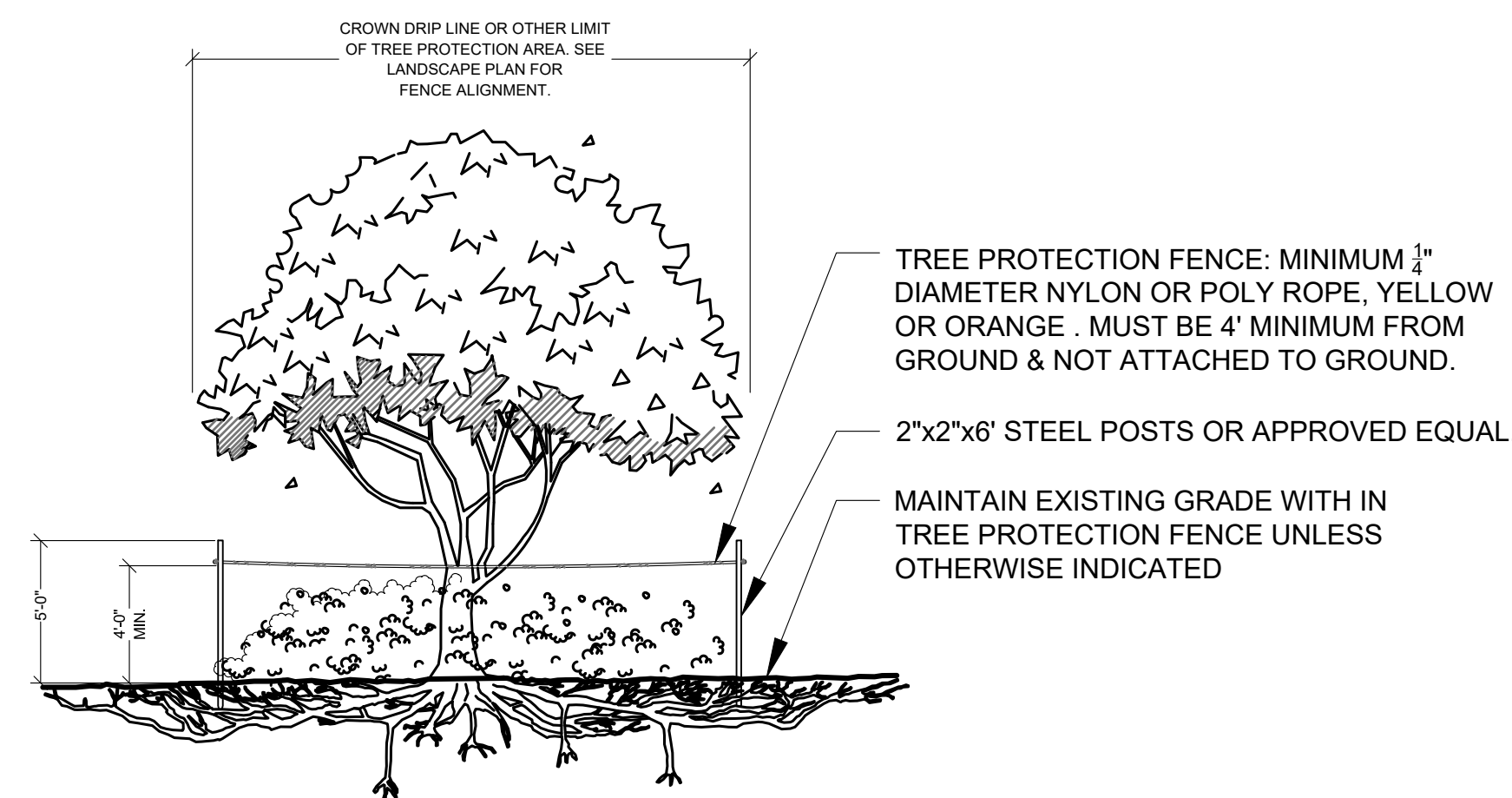


**DRAINAGE TESTING DETAIL**



**SPECIAL APPLICATIONS ROOT BARRIER DETAIL**  
NOT TO SCALE

- NOTES:**  
 1- ROOT BARRIER SHALL BE "BIO-BARRIER 29" DEPTH OR APPROVED EQUAL.  
 2- ROOT BARRIER SHALL BE INSTALLED PER MANUFACTURER'S SPECIFICATIONS AND RECOMMENDATIONS.



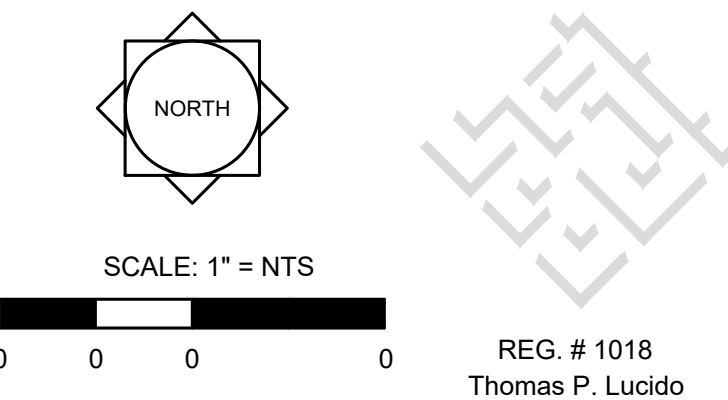
**TREE PROTECTION BARRICADE**  
NOT TO SCALE

- NOTES:**  
 1- SEE LANDSCAPE PLAN FOR FENCE ALIGNMENT.  
 3- NO PRUNING SHALL BE PERFORMED EXCEPT BY APPROVED ARBORIST.  
 4- NO EQUIPMENT SHALL OPERATE INSIDE THE PROTECTIVE FENCING INCLUDING DURING FENCE INSTALLATION AND REMOVAL.

**DRAINAGE TESTING/DRAINAGE CHANNEL REQUIREMENTS.**

PRIOR TO PLANTING, ALL PLANTING PITS SELECTED FOR TESTING SHALL BE TESTED IN THE FOLLOWING MANNER.

- DIG EACH PLANTING PIT TO THE MINIMUM SPECIFIED SIZE.
- FILL PLANTING PIT WITH TWELVE INCHES (12") OF WATER. IF THE WATER LEVEL DROPS FOUR (4") OR MORE WITHIN FOUR (4) HOURS, THE DRAINAGE IS SUFFICIENT AND A DRAINAGE CHANNEL IS NOT REQUIRED. IF THE WATER LEVEL DROPS LESS THAN FOUR INCHES (4") WITHIN THE FOUR (4) HOUR PERIOD, A DRAINAGE CHANNEL IS REQUIRED.
- WHERE REQUIRED, THE DRAINAGE CHANNEL MUST EXTEND DOWN THROUGH THE NON POROUS SOIL AND INTO POROUS SOIL. (SEE DETAIL)
- ALL MATERIAL REMOVED FROM THE DRAINAGE CHANNEL SHALL BE DISCARDED.
- WHEN BACKFILLING PLANTING PITS WITH NATIVE TOPSOIL, CARE MUST BE TAKEN TO KEEP THE CONSISTENCY OF THE SOIL MIX THE SAME THROUGHOUT THE PLANTING PIT AND DRAINAGE CHANNEL.



REG. # 1018  
 Thomas P. Lucido

Designer PG Sheet  
 Manager SG  
 Project Number 20-276.20  
 Municipal Number P22-195  
 Computer File Stars and Stripes Park Landscape.dwg

**LA-10**



LANDSCAPE SPECIFICATIONS

PART 1: GENERAL CONDITIONS

- 1.01 SCOPE: The landscape contract includes the supplying and planting of all trees, shrubs, vines, and ground cover together with all necessary labor, equipment, tools and materials needed for the successful completion, execution and maintenance of the landscape plans.
1.02 AGENCY STANDARDS: Grades and standards of plant materials to be used shall be true to name, size, condition and graded Florida #1 or better as stated in: Grades and Standards of Florida Plant Materials published by the State of Florida Department of Agriculture, Tallahassee, Florida.
1.03 SITE EXAMINATION: The Landscape Contractor shall personally examine the site and fully acquaint him/herself with all of the existing conditions in order that no mis-understanding may afterwards arise as to the character or extent of the work to be performed, and, additionally, in order to acquaint him/herself with all precautions to be taken in order to avoid injury to property or persons.
1.04 ERRORS AND OMISSIONS: The plant list is a part of the drawings and is furnished as a convenience. The plant list indicates the name, size and quantities of specific plant materials as called for and is located on the drawings.
B. The Landscape Contractor shall not take advantage of errors or omissions in the specifications or contract drawings.
C. If plans and specifications are found to disagree after the contract is awarded, the Landscape Architect shall be the judge as to which was intended.
1.05 EXECUTION OF THE WORK: The Landscape Contractor shall have his labor crews controlled and directed by a Foreman well versed in plant materials, planting methods, reading plans, and coordination between job and nursery in order to execute installation correctly and in a timely manner.
B. The Landscape Contractor shall provide a competent English-speaking Foreman on the project at all times, who shall be fully authorized as the Contractor's agent on the job.
C. The Landscape Contractor shall be available for any meetings with the Owner and/or Landscape Architect during implementation of the job.
1.06 PROTECTION OF PUBLIC AND PROPERTY: The Landscape Contractor shall protect all materials and work against injury from any cause and shall provide and maintain all necessary safeguards for the protection of the public.
1.07 CHANGES AND EXTRAS: The Contractor shall not start work on any changes or "extras" in the project until a written agreement setting forth the adjusted prices has been executed by the Owner and the Contractor.
1.08 GUARANTEE: The Landscape Contractor shall furnish a written guarantee warranting all materials, workmanship and plant materials, except sod, for a period of 18 MONTHS from the time of completion and acceptance by the Landscape Architect and Owner.
B. At the end of the specified guarantee period, any plant required under this contract that is dead or not in satisfactory condition, as determined by the Landscape Architect, shall be replaced.
1.09 CARE AND MAINTENANCE: The Landscape Contractor shall be responsible for the care and maintenance of all plant materials and irrigation when applicable until final acceptance by the Owner or Landscape Architect.
B. The Owner agrees to execute the instructions for such care and maintenance.
1.10 SAFETY: It shall be the responsibility of the Landscape Contractor to protect all persons from injury and to avoid property damage.
B. It shall be the contractor's responsibility to conform to all local, state, and federal safety laws and codes including the Federal Occupational Safety And Health Act (O.S.H.A.).
1.11 CONTRACTOR QUALIFICATION: The Owner may require the apparent contractor (s) to qualify him/herself to be a responsible entity by furnishing any or all of the following documentary data:
1. A financial statement showing assets and liabilities of the company current to date.
2. A listing of not less than (3) completed projects of similar scope and nature.
3. Permanent name and address of place of business.
4. The number of regular employees of the organization and length of time the organization has been in business under the present name.
1.12 INSURANCE AND BONDING: The contractor (s) shall submit proof of insurance for this job for the time period that the work is done.
B. The Owner shall have the right to require the Contractor to furnish bonds covering faithful performance of the Contract and payment obligations arising thereunder as stipulated in bidding requirements or specifically required in the Contract Documents on the date of execution of the Contract.
1.13 PERMITS AND CERTIFICATES: All contractors shall secure and pay for all permits and certificates required for his/her class of work.

PART 2: MATERIALS

- 2.01 PLANT MATERIALS: A complete list of plants is shown on the drawings, including a schedule of quantities, sizes, and such other requirements deemed necessary.
B. Substitutions: Substitutions of plant materials or changes in size or spacing of materials will be permitted ONLY upon written authorization by the Owner or the Landscape Architect.
C. All plant materials shall have a habit of growth that is normal for the species and shall be healthy, vigorous and equal to or exceed the measurements specified in the plant list, which are the minimum acceptable sizes.
D. All plant materials shall be nursery grown, unless otherwise noted, Florida #1 or better and shall comply with all required inspections, grading standards and plant regulations as set forth by the Florida Department of Agriculture's Grades and Standards for Nursery Plants, most current addition and Grades and Standards for Nursery Plants, most current addition.
E. Plants that do not have the normal balance of height and spread typical for the respective plant shall not be acceptable.
F. The Landscape Contractor shall install each plant to display its best side. Adjustments may be required if plants are not installed properly and/or approved by the Landscape Architect at no additional cost to owner.

2.02 INSPECTION

- A. The Landscape Architect and Owner may inspect trees and shrubs at place of growth or at site before planting, for compliance with requirements for genus, species, variety, size and quality.
2.03 PROTECTION OF PLANT MATERIALS:
A. Balled and burlapped plants (B & B) shall be dug with firm natural balls of earth of sufficient diameter and depth to encompass the fibrous and feeding root system necessary for full recovery of the plant.
B. Plants with broken, damaged or insufficient rootballs will be rejected.
C. All plant material shall be protected from possible bark injury or breakage of branches.
D. Plants which cannot be planted immediately on delivery to the site shall be covered with moist soil, mulch or other protection from the drying of wind and sun.
2.04 STORAGE
A. All plant materials shall be stored on the site in designated areas, specified by the Landscape Architect or Owner's agent.
B. No plant material shall be stored longer than seventy-two (72) hours unless approved by Landscape Architect and/or owner.
C. The Landscape Architect reserves the right to reject any plant materials not in conformance with these specifications.
D. All rejected material shall be immediately removed from the site and replaced with acceptable material at no cost to the Owner.

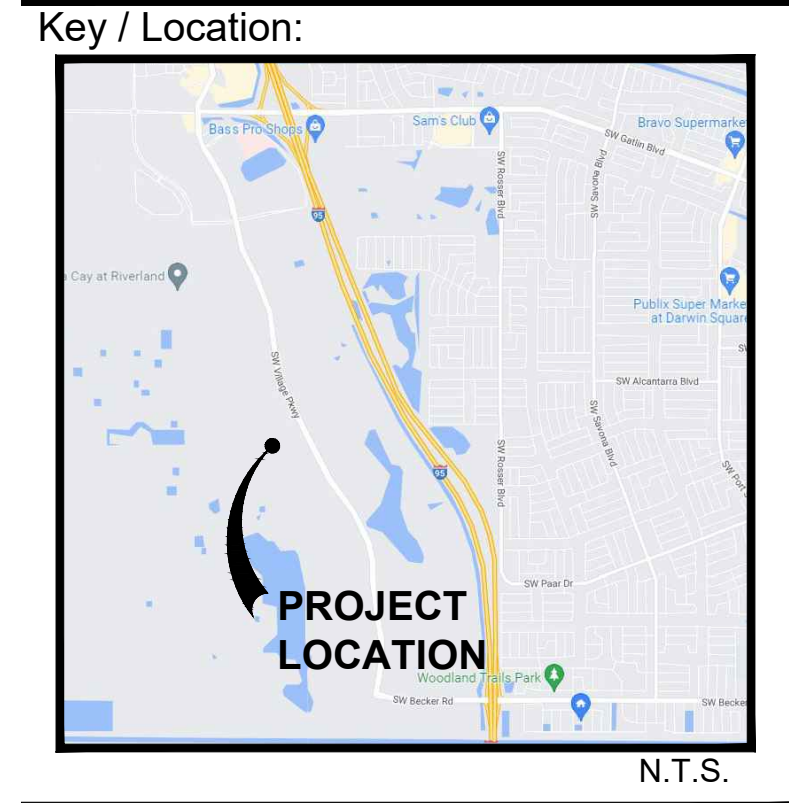
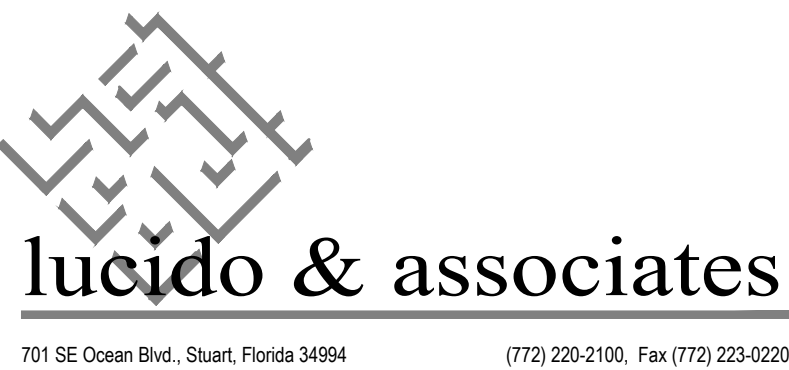
- 2.05 PROTECTION DURING PLANTING: Trees moved by winch or crane shall be thoroughly protected from chain marks, girdling or bark slippage by means of burlap, wood battens or other approved methods.
2.06 TOP SOIL: Planting soil for all plantings shall consist of topsoil and be natural, friable, fertile, fine loamy soil possessing characteristics of representative topsoil in the vicinity of the project site that produces heavy growth.
B. Landscape Area Preparation. The intent of this section is to ensure a healthy growing environment for all planting material in all landscaped areas.

- FERTILIZER: Commercial fertilizer shall comply with the state and local fertilizer laws. Nitrogen shall not be less than 40% from organic source.
B. Thoroughly mixed 3 lbs. of commercial fertilizer to each cubic yard of planting soil.
C. Tableted fertilizer shall be Agriform planting tablets 20-10-5 formula, 21 gram or equal.
2.08 MULCH: Mulch material shall be clean, dry, free of weeds, seeds and pests, moistened at the time of application to prevent wind displacement.
B. All trees and shrub beds shall receive 3" mulch immediately after planting and thoroughly watered.

- 2.09 EXECUTION DIGGING: The Landscape Contractor shall exercise care in digging and other work so as not to damage existing work, including overhead wires, underground pipes and cables and the pipes and hydrants of watering systems.
3.02 GRADING: Grading for drainage, swales, etc. to within 4 inches of the finished grade to be provided by others.
B. It shall be the responsibility of the Landscape Contractor to provide the final grading during the course of landscape installation so as to bring sod and planting areas to their proper elevations in relation to walks, paving, drain structures, and other site conditions.
3.03 PLANTING: Planting shall take place during favorable weather conditions.
B. The Contractor shall call for utility locates and ascertain the location of all utilities and easements so proper precautions can be taken not to damage or encroach on them.
C. Tree Planting shall be located where it is shown on the plan.
D. Excavation of holes shall extend to the required subgrades as specified on the planting diagrams located in the landscape plans.
E. A representative number of planting pits (a minimum of one in every 25 feet throughout the entire site) shall be tested for proper drainage.
F. Planting pits shall be excavated to the following dimensions and backfilled with Topsoil- see Landscape Area Preparation Detail;

- 3.04 EXECUTION DIGGING: The Landscape Contractor shall exercise care in digging and other work so as not to damage existing work, including overhead wires, underground pipes and cables and the pipes and hydrants of watering systems.
3.05 GRADING: Grading for drainage, swales, etc. to within 4 inches of the finished grade to be provided by others.
B. It shall be the responsibility of the Landscape Contractor to provide the final grading during the course of landscape installation so as to bring sod and planting areas to their proper elevations in relation to walks, paving, drain structures, and other site conditions.
3.06 PLANTING: Planting shall take place during favorable weather conditions.
B. The Contractor shall call for utility locates and ascertain the location of all utilities and easements so proper precautions can be taken not to damage or encroach on them.
C. Tree Planting shall be located where it is shown on the plan.
D. Excavation of holes shall extend to the required subgrades as specified on the planting diagrams located in the landscape plans.
E. A representative number of planting pits (a minimum of one in every 25 feet throughout the entire site) shall be tested for proper drainage.
F. Planting pits shall be excavated to the following dimensions and backfilled with Topsoil- see Landscape Area Preparation Detail;

- I. All plants shall be set to ultimate finished grade.
J. All flagging ribbon shall be removed from trees and shrubs before planting.
K. Excess excavation (fill) from all holes shall be removed from the site, at no additional expense to Owner.
L. All palms shall be backfilled with sand, thoroughly washed in during planting operations and with a shallow saucer depression left at the soil line for future watering's.
3.04 PRUNING: Remove dead and broken branches from all plant material.
B. Make all cuts with sharp instruments flush with trunk or adjacent branch, in such a manner as to insure elimination of stubs.
C. Trees shall not be poled or topped.
D. Remove all trimming from site.
3.05 GUYING:
A. All trees over six (6') feet in height shall, immediately after setting to proper grade, be guyed with three sets of two strands, No. 12 gauge malleable galvanized iron, in tripod fashion.
B. Wires shall not come in direct contact with the tree but shall be covered with an approved protection device at all contact points.
C. Stake & Brace all trees larger than 12' oa.
D. Turnbuckles for guying trees shall be galvanized or cadmium plated and shall be of adequate size and strength to properly maintain tight guy wires.
3.06 WATER: Each plant or tree shall be thoroughly watered in after planting.
B. Prior to installing any irrigation system components, the contractor shall obtain a water sample from the proposed water supply and conduct a particle size and count analysis on the sample using the services of a reputable lab certified in such analysis.
3.07 SOD: The Landscape Contractor shall sod all areas indicated on the drawings.
B. It shall be the responsibility of the Landscape Contractor to fine grade all landscape areas, eliminating all bumps, depressions, sticks, stones, and other debris.
C. The sod shall be firm, tough texture, having a compacted growth of grass with good root development.
D. Before being cut and lifted, the sod shall have been mowed at least three times with a lawn mower, with the final mowing not more than seven days before the sod is cut.
E. 6-6-6 fertilizer with all trace elements is to be applied at the rate of 40 lbs. per 1,000 sq. ft.
F. Solid sod shall be laid with closely abutting, staggered joints with a tamped or rolled, even surface.
G. The finished level of all sod areas after settlement shall be one (1") inch below the top of abutting curbs, walks, paving and wood borders to allow for building turf.
H. If in the opinion of the Landscape Architect, top dressing is necessary after rolling, clean yellow sand will be evenly applied over the entire surface and thoroughly washed in.
3.08 SEEDING: The Landscape Contractor shall remove all vegetation and rocks larger than (1") in diameter from areas to be seeded, scarify the area, then apply fertilizer at a rate of 500 lbs. per acre.
B. Application: Argentine Bahia Grass seed- 200 Pounds per acre mixed with common hulled Bermuda seed- 30 lbs. per acre.
C. Roll immediately after seeding with a minimum 500 pound roller, then apply straw mulch at the rate of 2,500 pounds per acre.
D. Apply fertilizer at the rate of 150 lbs. per acre 45-60 days after seeding.
3.09 CLEANING UP: The contractor shall at all times keep the premises free from accumulations of waste materials or rubbish caused by his employees or work.
3.10 MAINTENANCE: Maintenance shall begin immediately after each plant is installed and shall continue until all planting has been accepted by the Owner or Landscape Architect.
B. Proper protection to lawn areas shall be provided and any damage resulting from planting operations shall be repaired promptly.
C. Replacement of plants during the maintenance period shall be the responsibility of the Contractor, excluding vandalism or damage on the part of others, lighting, or hurricane force winds, until final acceptance.
D. In the event that weeds or other undesirable vegetation become prevalent, it shall be the Contractor's responsibility to remove them.
E. Trees or other plant material which fall or are blown over during the maintenance period will be reset by the Contractor at no additional expense to the Owner, the only exception being hurricane force winds.
3.11 COMPLETION, INSPECTION AND ACCEPTANCE: Completion of the work shall mean the full and exact compliance and conformity with the provisions expressed or implied in the Drawings and in the Specifications, including the complete removal of all trash, debris, soil or other waste created by the Landscape Contractor.
B. Inspection of work to determine completion of contract, exclusive of the possible replacement of plants, will be made by the Owner and/or Landscape Architect at the conclusion of all planting and at the request of the Landscape Contractor.
C. All plant material shall be alive and in good growing condition for each specified kind of plant at the time of acceptance.
D. After inspection, the Landscape Contractor will be notified by the Owner of the acceptance of all plant material and workmanship, exclusive of the possible replacement of plants subject to guarantee.
E. All trees & shrubs shall be straight and in correct position per the landscape plans, details and specifications.



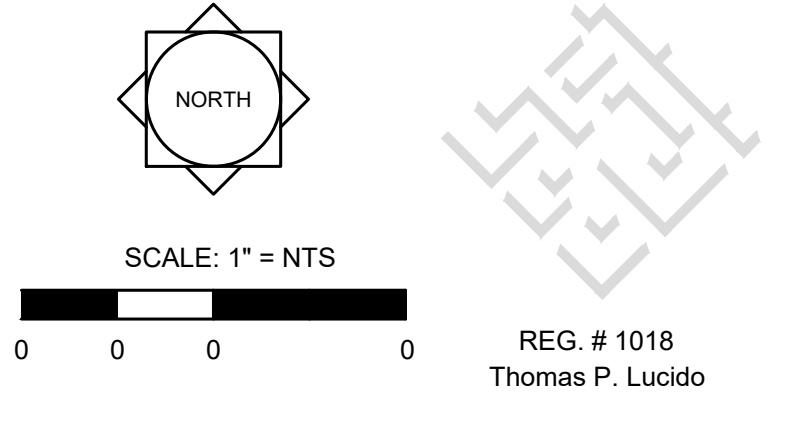
Project Team:
Owner: City of Port St. Lucie
Developer: Mattamy Homes
Engineer: HSQ Group, Inc.
Surveyor: Caulfield & Wheeler, Inc.
Landscape Architect/Land Planner: Lucido & Associates

Mattamy Homes Stars & Stripes Park

Tradition, Florida

Landscape Specifications PSLUSD #: 5218C

Table with 3 columns: Date, By, Description. Includes entries for Initial Submittal, Resubmittal, and Revision dates.



Design: PG Sheet
Manager: SG
Project Number: 20-276.20
Municipal Number: P22-195
Computer File: Stars and Stripes Park Landscape.dwg
LA-11

Drawing Name: C:\Users\KVELIN~1\AppData\Local\Temp\AcPublish\_12972\Oct 05, 2023 - 11:07am Stars and Stripes Park Landscape.dwg