

Copyright  
The following drawings are instruments of service to the Landscape Architect. They are not products of design. All ideas, designs, arrangements, and plans indicated or represented by this drawing are owned by and the property of the designer, and were created, evolved, and developed for use on and in connection with the specified project. None of such ideas, designs, arrangements, or plans shall be used by or disclosed to any person, firm, or corporation for any purpose whatsoever without the written permission of the designer.

Job No. 2020-10  
Drawn By TT  
Checked By MH  
Approved By MH  
Submittal Dates 02-12-21

Revision Dates xxxxxx

**LP-1**

**Landscape Data**

**Site Perimeter Landscape Buffers:**  
1 tree per 30 LF of right of way or abutting property along with a continuous hedge, 24" Ht. at the time of planting.

**West Property:**  
Landscape Strip: 10' Min. Depth ( 346 LF)  
Trees Required: (346 LF / 30) = 12 Trees  
Trees Provided: = 12 Trees (4 Trees + 16 Palms @ 2:1)

**East Property:**  
Landscape Strip: 10' Min. Depth ( 647 LF)  
Trees Required: (647 LF / 30) = 22 Trees  
Trees Provided: = 23 Trees (11 Trees + 16 Palms @ 2:1 + 4 palms @ 1:1)

**North Property:**  
Landscape Strip: 10' Min. Depth ( 1,275 LF)  
Trees Required: (1,275 LF / 30) = 43 Trees  
Trees Provided: = 43 Trees (25 Trees + 22 Palms @ 2:1 + 7 palms @ 1:1)

**South Property:**  
Landscape Strip: 10' Min. Depth ( 1,611 LF)  
Trees Required: (1,611 LF / 30) = 54 Trees  
Trees Provided: = 54 Trees (33 Trees + 24 Palms @ 2:1 + 9 palms @ 1:1)

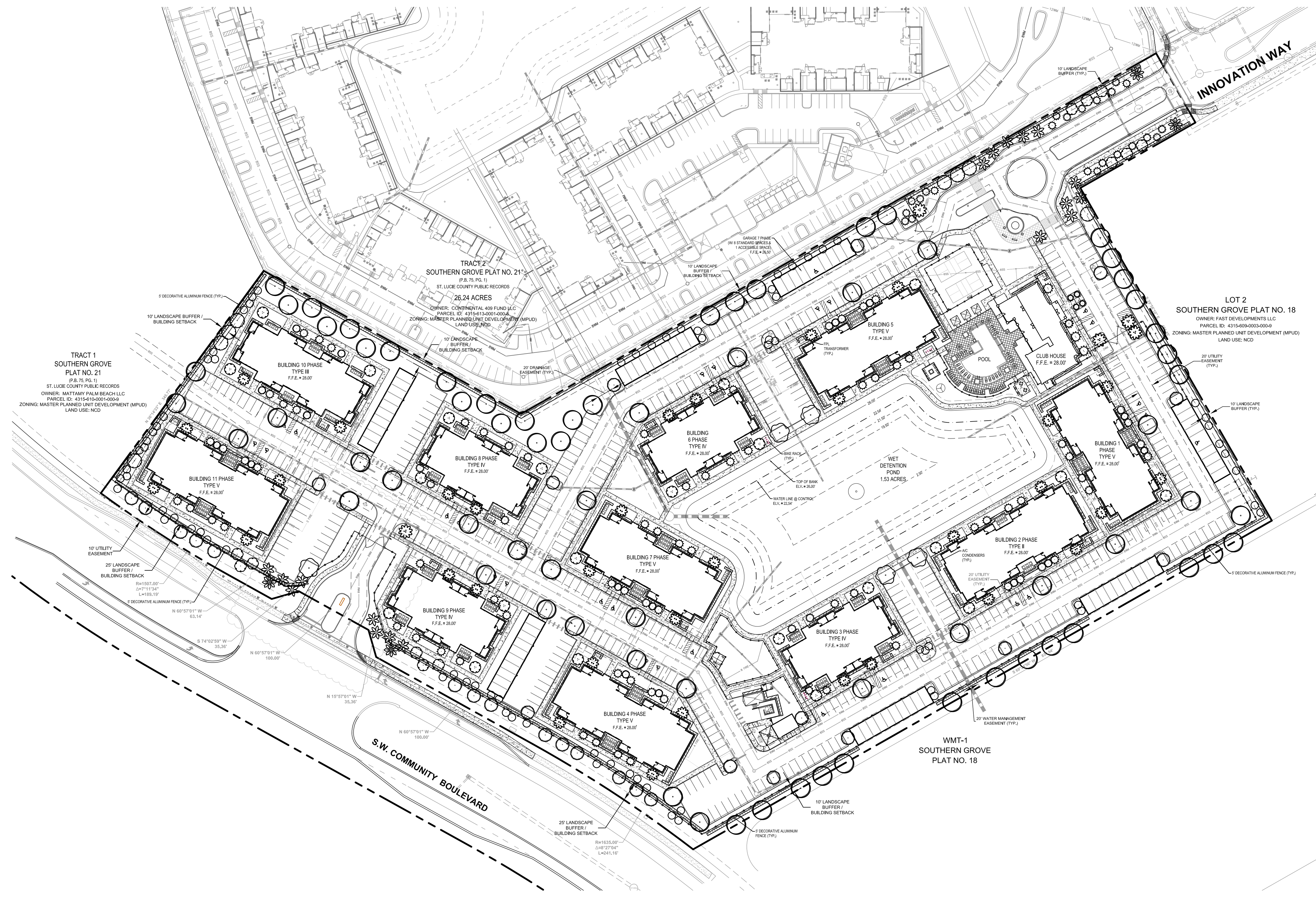
**Building Facade Landscaping:**  
A landscape strip at least 5 ft in depth shall be located around the perimeter of a building that is visible to the general public. 1 tree or palm per 30 LF and a continuous hedge shall be required. Trees shall be a min. of 8 ft in height and shrubs shall be at least 24" in height at the time of planting.

Total Linear Footage of Buildings = 4,606 LF  
Trees Required: (4,606 LF / 30) = 154 Trees  
Trees Provided: = 157 Trees (38 Trees + 119 Palms @ 1:1)

**Parking lot Island Landscaping:**  
Each landscape island shall have at least (1) one tree with the remainder of the island landscaped with ground cover, mulch, shrubs or other treatment excluding paving.

1 Tree per Terminal / Landscape Island:  
Trees Required: = 67 Trees  
Trees Provided: = 68 Trees (50 Trees + 22 Palms @ 2:1 + 7 palms @ 1:1)

Total Trees Required: = 352 Trees  
Total Trees Provided: = 357 Trees



**Tree Requirements**

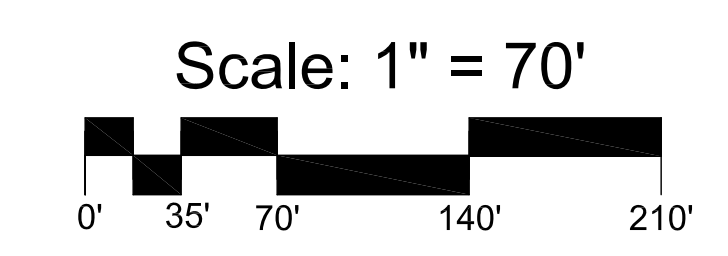
**Required Tree Species Mix:**  
Species Mix Required: = 5  
Species Mix Provided: = 8

**Max. Palm Trees - No more than 40% of Required Trees:**  
(Building Facade Landscape Strip is exempt from this requirement)  
Max. Palms Allowed: (198 Req. Trees x 40%) = 79 Trees  
Palm Provided: = 77 Trees  
(100 Palms @ 2:1 + 27 @ 1:1)

**Native Tree Requirement- 50% Min. of Req. Trees:**  
Native Trees Required: (352 Req. Trees x 50%) = 176 Trees  
Native Trees Provided: = 177 Trees  
(132 Trees + 74 Palms @ 2:1 + 8 palms @ 1:1)

**Evergreen Shade Trees Requirement- 75% Min. within landscape Islands:**  
Shade Trees Required: (67 Req. Trees x 75%) = 50 Trees  
Shade Trees Provided: = 50 Trees

**Flowering Trees Requirement- 20% Min. of all Required Trees:**  
Trees Required: (352 Req. Trees x 20%) = 70 Trees  
Trees Provided: = 47 Trees

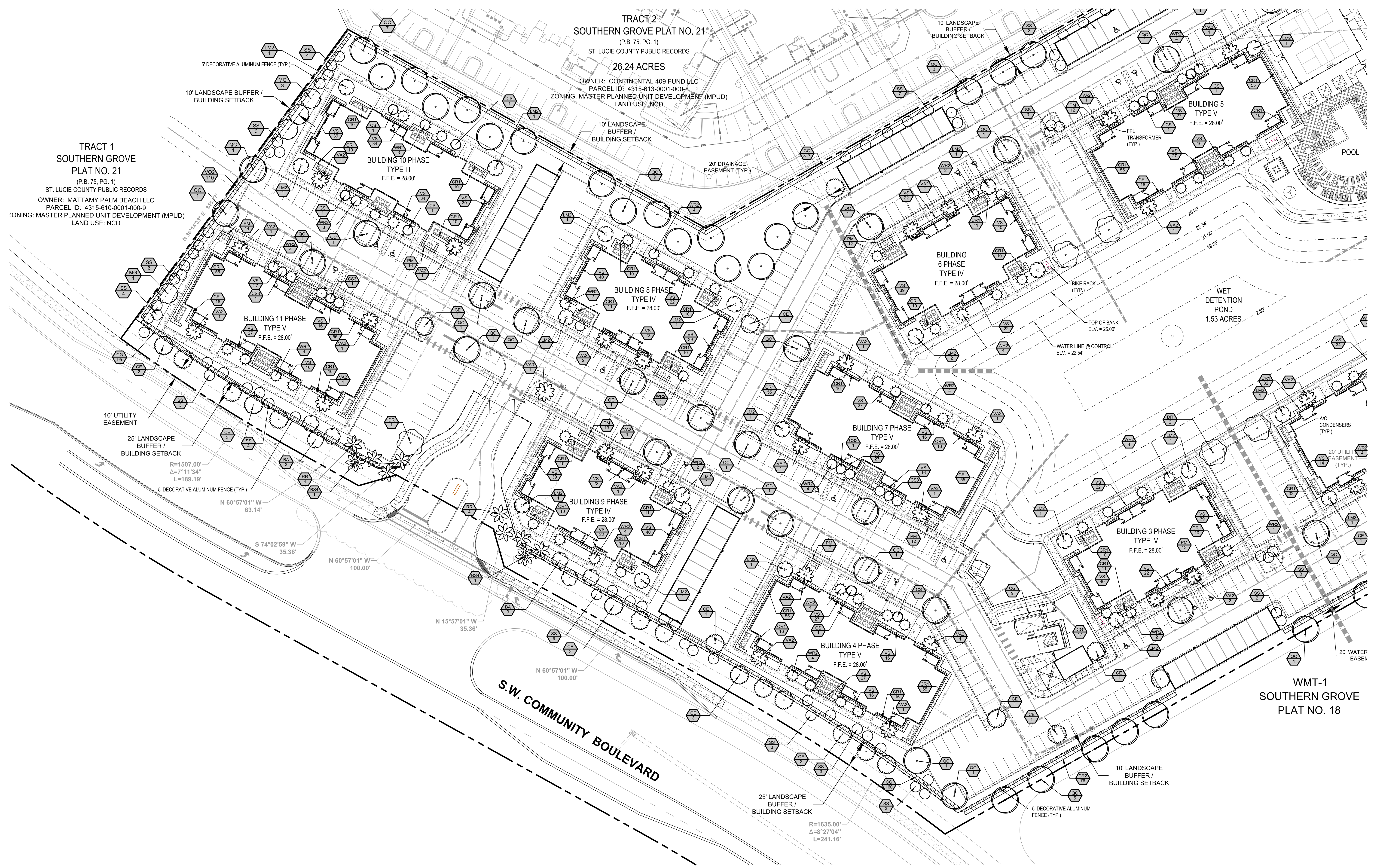


CITY OF PSL PROJECT NO. P20-244  
PSLUSD PROJECT NO. 5396



**THE LUCIE AT TRADITION**

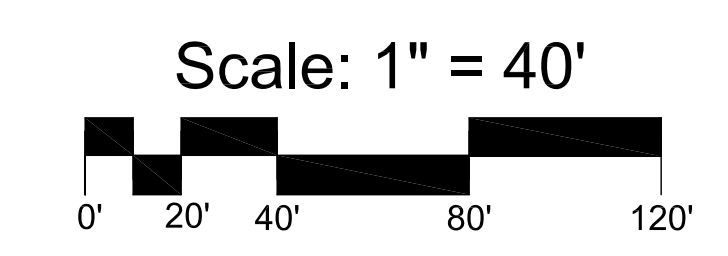
City of Port St. Lucie  
Code Landscape Plan



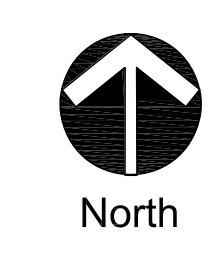
Copyright  
The following drawings are instruments of service to the Landscape Architect. They are not products of design. All ideas, designs, arrangements, and plans indicated or represented by this drawing are owned by and the property of the designer, and were created, evolved, and developed for use on and in connection with the specified project. None of such ideas, designs, arrangements, or plans shall be used by or disclosed to any person, firm, or corporation for any purpose whatsoever without the written permission of the designer.

Job No.	2020-10
Drawn By	TT
Checked By	MH
Approved By	MH
Submittal Dates	02-12-21

Revision Dates xxxxxx



CITY OF PSL PROJECT NO. P20-244  
PSLUSD PROJECT NO. 5396

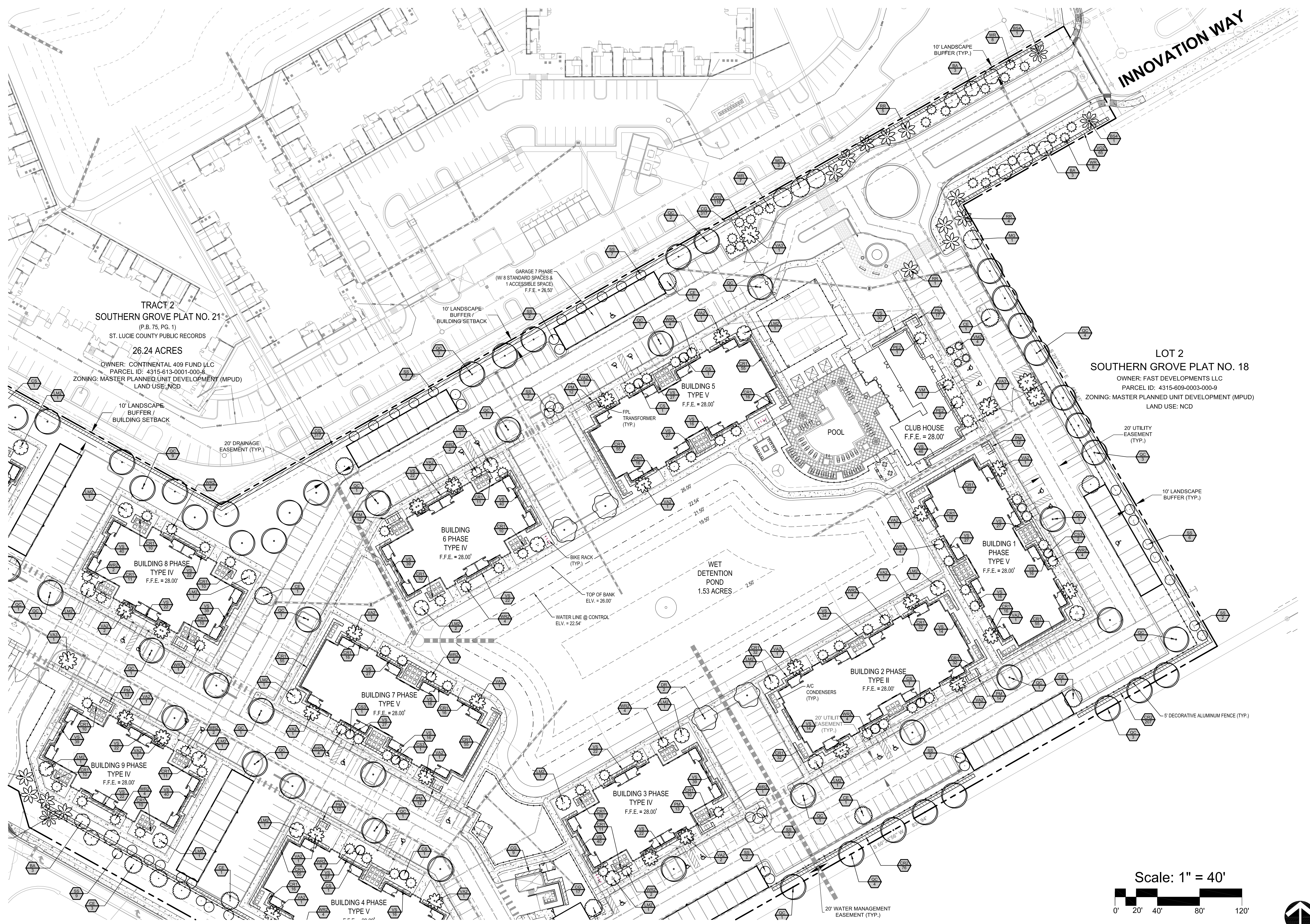


**LP-2**



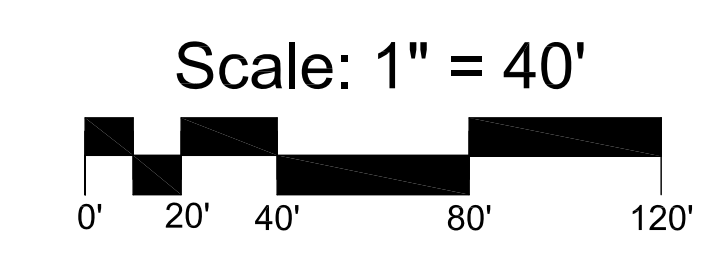
**THE LUCIE AT TRADITION**

City of Port St. Lucie  
Code Landscape Plan

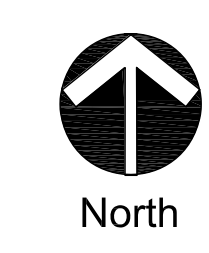


**Copyright**  
The following drawings are instruments of service to the Landscape Architect. They are not products of design. All ideas, designs, arrangements, and plans indicated or represented by this drawing are owned by and the property of the designer, and were created, evolved, and developed for use on and in connection with the specified project. None of such ideas, designs, arrangements, or plans shall be used or disclosed to any person, firm, or corporation for any purpose whatsoever without the written permission of the designer.

Job No.	2020-10
Drawn By	TT
Checked By	MH
Approved By	MH
Submittal Dates	02-12-21
Revision Dates	xxxxxx



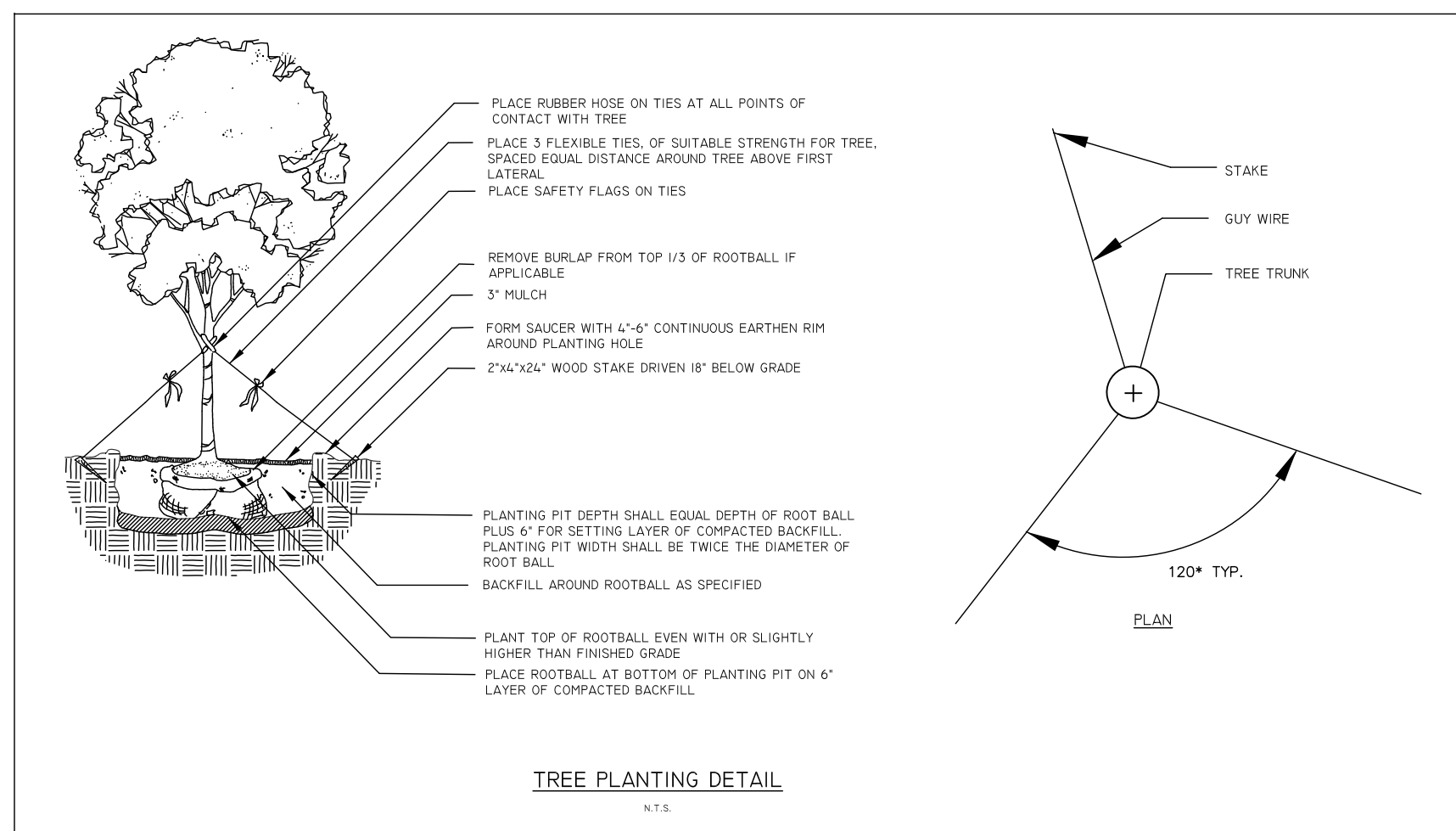
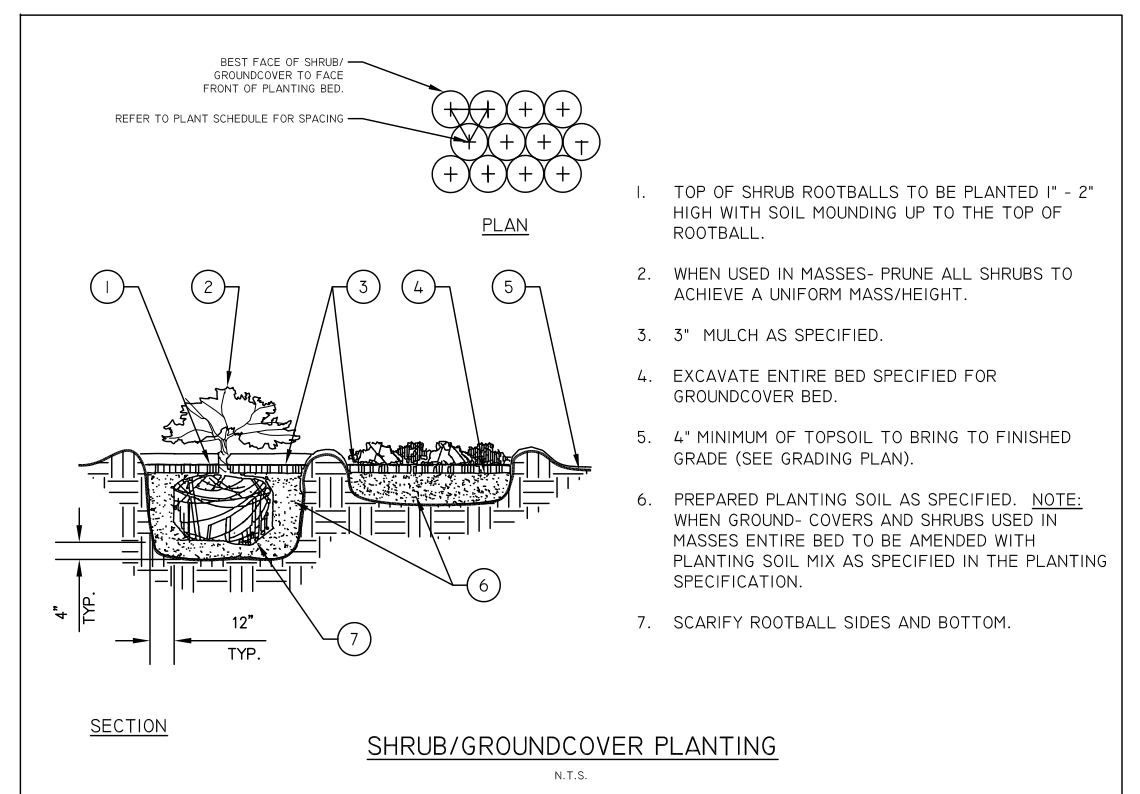
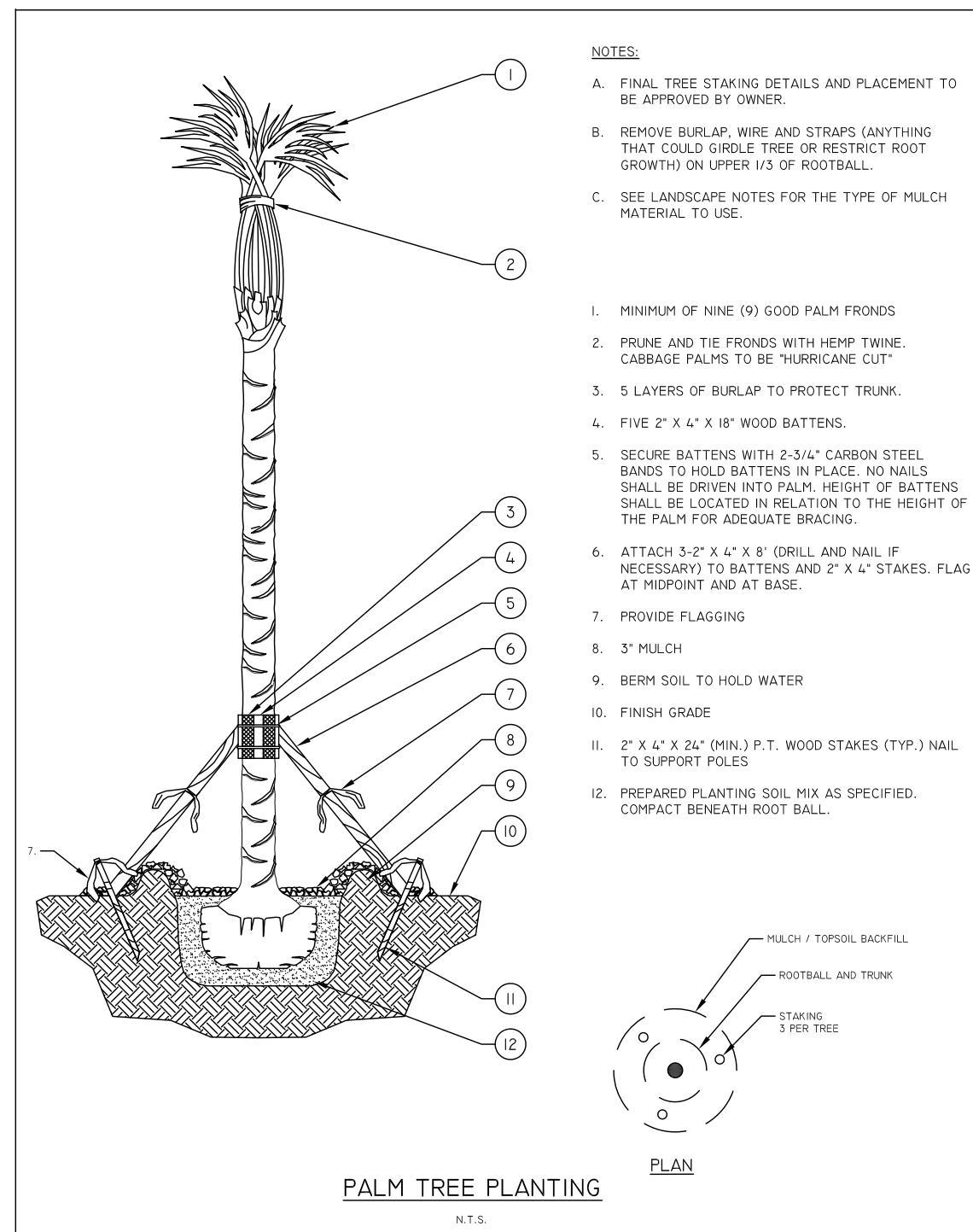
CITY OF PSL PROJECT NO. P20-244  
PSLUSD PROJECT NO. 5396



**LP-3**



# Landscape Details



TREE SCHEDULE						
CODE TREES - BUILDING PERIMETER	CODE	QTY	BOTANICAL / COMMON NAME	SIZE	NATIVE	
	VM	1	Adonia merillii / Christmas Palm Tree Ratio (1 : 1) (Building Perimeter)	10' CT. Min., Triple Specimen	No	
	CS	10	Clusia guttifera / Small Leaf Clusia Tree Ratio (1 : 1) (Building Perimeter)	2" Cal., 10' Ht. Min., Std. 4-5' ct.	Yes	
	CS3	6	Conocarpus erectus sericeus / Silver Buttonwood Tree Ratio (1 : 1) (Building Perimeter)	2" Cal., 10' Ht. Min., Std. 4-5' ct.	Yes	
	LM2	22	Lagerstroemia indica 'Muskogee' / Crape Myrtle Tree Ratio (1 : 1) (Building Perimeter)	10' Ht. Min., multi-trunk	No	
	PE2	3	Pychosperma elegans / Alexander Palm Tree Ratio (1 : 1) (Building Perimeter)	10' CT. Min., Double Specimen	No	
	VA2	33	Veitchia arecina / Montgomery Palm Tree Ratio (1 : 1) (Building Perimeter)	10' CT. Min., Double Specimen	No	
	WR2	82	Washingtonia robusta / Mexican Fan Palm Tree Ratio (1 : 1) (Building Perimeter)	10' CT Min.	No	
CODE TREES - PERIMETER BUFFER & PARKING LOT	CODE	QTY	BOTANICAL / COMMON NAME	SIZE	NATIVE	
	VM2	4	Adonia merillii / Christmas Palm Tree Ratio (2 : 1)	10' CT Min.	No	
	BS4	4	Bismarckia nobilis 'Silver' / Silver Bismark Palm Tree Ratio (1 : 1)	7-8' ct, Single Specimen, Hvy trunk, Full Head	No	
	BA	12	Bulnesia arborea / Verawood	2.5"-3" Cal., 14' Ht. Min., Std. 4-5' ct.	No	
	CE	27	Conocarpus erectus / Green Buttonwood	2.5"-3" Cal., 14' Ht. Min., Std. 4-5' ct.	Yes	
	DR	5	Delonix regia / Royal Poinciana	2.5"-3" Cal., 14' Ht. Min., Std. 4-5' ct.	No	
	MG	8	Magnolia grandiflora 'D.D. Blanchard' / Southern Magnolia	2.5"-3" Cal., 14' Ht. Min., Std. 4-5' ct.	Yes	
	QC	71	Quercus virginiana / Live Oak	2.5"-3" Cal., 14' Ht. Min., Std. 4-5' ct.	Yes	
	RR	18	Roystonea regia / Royal Palm Tree Ratio (1 : 1)	10' CT Min.	Yes	
	SS	74	Sabal palmetto / Cabbage Palmetto Tree Ratio (2 : 1)	10' CT Min.	Yes	
	VA3	5	Veitchia arecina / Montgomery Palm Tree Ratio (1 : 1)	10' ct. Min., Triple Specimen	No	
	WR	23	Washingtonia robusta / Mexican Fan Palm Tree Ratio (2 : 1)	10' CT Min.	No	

SHRUB SCHEDULE						
SHRUB AREAS	QTY	BOTANICAL / COMMON NAME	SIZE	DETAILS	NATIVE	SPACING
CR2	359	Chrysobalanus icaco 'Red Tip' / Red Tip Cocoplum	3 gal	24" Ht. Min.	Yes	36" o.c.
CR1	1,042	Chrysobalanus icaco 'Red Tip' / Red Tip Cocoplum	3 gal	24" Ht. Min.	Yes	30" o.c.
CG	598	Clusia guttifera / Small Leaf Clusia	3 gal	24" Ht. Min.	Yes	36" o.c.
PM	160	Podocarpus macrophyllus / Yew Pine	3 gal	24" Ht. Min.	No	24" o.c.
VO2	293	Viburnum odoratissimum / Sweet Viburnum	3 gal., 24" Ht. Min.		No	36" o.c.
VS	1,240	Viburnum suspensum / Sandankwa Viburnum	3 gal	24" Ht., full	No	30" o.c.

# Landscape Notes

1. Landscaping installed shall conform to or exceed the minimum standards for Florida Number 1, as provided in the most current edition of the Grades and Standards for Nursery Plants, Parts I and II, prepared by the state department of agriculture and consumer services.
3. Shrubs shall be a min. of 2' Ht. when measured immediately after planting.
4. All landscaping shall be installed in a sound, workmanlike manner and according to accepted good planting practice with the quality of plant materials as hereinafter described
5. All balled and burlapped trees and palms shall be staked. Trees and palms shall be staked until the roots have become established for a period typically between 6 months and 1 year, or as specified by a landscape architect
6. No landscaping shall be planted in such a manner to adversely affect drainage or utility easments
7. No tree shall be planted within 10 feet of any existing utility pole, guy wire, or pad mounted transformer
8. Landscaping shall be in compliance with Chapter 153 of the City of Port St. Luice Code of Ordinances, PSLUSD technical specifications and policies.
9. Trees shall not be planted within ten (10) feet of any utility.
10. No landscaping other than sod grasses may be planted within a 5' radius maintenance area of any PSLUSD appurtenance such as water meters, backflow devices, fire hydrants, sanitary sewer cleanouts and manholes, air release valves, valve boxes, etc.
11. All sodded and planted areas shall be provided with an irrigation systems except for Xeriscapae areas. Xeriscapae areas must have a readily available water supply to provide temporary irrigation until plantings are established
12. Pruning restrictions shall not apply for trees located under power lines. Trees shall be pruned only as necessary to promote healthy growth. Trees shall be allowed to attain their normal size and shall not be severely pruned or "hatracked" in order to permanently maintain growth at a reduced height. Trees may be periodically pruned or thinned in order to reduce leaf mass in preparation for tropical storms. All pruning shall be accomplished in accordance with the National Arborists Standards
13. Trees to be preserved shall be protected from construction damage. Protections should include barricades erected around the dripline, or other similar separation of the tree during the entire construction process
14. Trees of species whose roots are known to cause damage to public roadways, utilities, or other public works shall not be planted closer than 10 feet to those public works
15. In those instances where a tree(s) is planted closer than five (5) feet from a street, sidewalk, or structure, a root barrier(s) shall be installed. Root barriers for trees shall be installed along the edge of structure or paving or curb. The root barrier shall be a minimum of twenty-four (24) inches deep but depending of the size, location, and species of tree to be planted, a larger barrier may be required. The root barrier shall be installed with twenty (20) linear feet, centered from the trunk, for the large trees and fifteen (15) linear feet for smaller trees. All root barriers shall be linear
16. A hedge that is at least 24" in height when planted shall be planted around mechanical, electrical, and utility equipment except where access to the equipment is necessary.
17. Trees shall not be planted within 10 feet of a PSLUSD main , appurtenance or underground infrastructure.
18. No landscaping shall be planted in a manner that would adversely affect utility easements. Landscaping shall be in compliance with Chapter 153 of the City of Port St. Lucie Code of Ordinances, PSLUSD technical specifications and policies.
19. All landscaping within City utility easements shall comply with PSLUSD technical specifications, policies, and codes.
20. All landscaping shall meet the latest PSLUSD Landscape Policy and shall not be placed in a manner that would create conflicts with the intended operation and maintenance of any existing utility.
21. Trees shall not be planted within ten (10) feet of any PSLUSD underground infrastructure.
22. No landscaping other than sod grasses shall be located within 5' of a PSLUSD appurtenance such as a water meter assembly, backflow device, fire hydrant or sewer cleanout.
23. A Preserve Area Management Plan shall be provided prior to obtaining any permits for clearing.
24. Refer to Civil Engineers plan, sheet EC-1 for environmental assessment summary.
25. Prior to obtaining approval of clearing exotics from the preserve area, a preserve area management plan shall be submitted to the Planning and Zoning Department for Approval.



50 E. Ocean Blvd., Suite 101  
Stuart, Florida 34994

T 772.678.7200  
F 772.678.7201

www.hjadesignstudio.com  
LA 0000905

**THE LUCIE AT TRADITION**  
 City of Port St. Lucie  
 Landscape Specifications  
 Florida

Copyright  
The following drawings are instruments of service to the Landscape Architect. They are not products of design. All ideas, designs, arrangements, and plans indicated or represented by this drawing are owned by and the property of the designer, and were created, evolved, and developed for use on and in connection with the specified project. None of such ideas, designs, arrangements, or plans shall be used by or disclosed to any person, firm, or corporation for any purpose whatsoever without the written permission of the designer.

Job No. 2020-10  
 Drawn By TT  
 Checked By MH  
 Approved By MH  
 Submittal Dates 02-12-21

Revision Dates xxxxxx

**LP-4**

CITY OF PSL PROJECT NO. P20-244  
PSLUSD PROJECT NO. 5396