

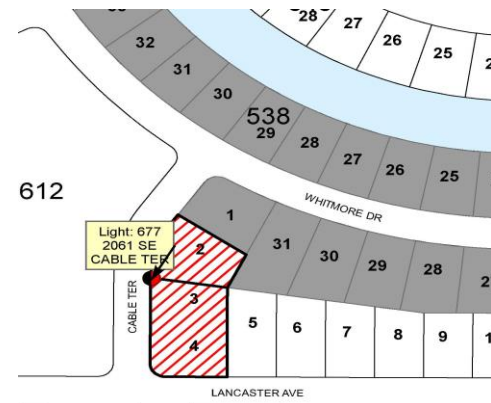


**NOTICE OF PUBLIC HEARING
NEW RESIDENTIAL STREET LIGHTING
ASSESSMENT AREAS FOR FISCAL YEAR 2021/2022
CITY COUNCIL MEETING JULY 11, 2022, AT 6:30 P.M.
CITY HALL, 121 SW PORT ST. LUCIE BOULEVARD, PORT ST. LUCIE, FLORIDA**

THE LOTS LISTED BELOW ARE IN AREAS BALLOTTED AND PASSED BY MAJORITY OF THE PROPERTY OWNERS RETURNED BALLOTS. THE CITY CONTEMPLATES LEVYING AN ASSESSMENT ESTIMATED AT \$26.00 PER LOT. PAYMENT WILL BE ON A YEARLY BASIS AND COLLECTED BY THE ST. LUCIE COUNTY TAX COLLECTOR. THIS ASSESSMENT WILL BE INCLUDED IN YOUR NOVEMBER 2023 TAX BILL ON THE NON-AD VALOREM PORTION OF YOUR TAX BILL. A DESCRIPTION OF THE PROPERTIES SPECIALLY BENEFITED (BY SECTION, BLOCK AND LOT) AND A MAP SHOWING THE LOCATION OF THE STREET LIGHTING IS AS FOLLOWS:

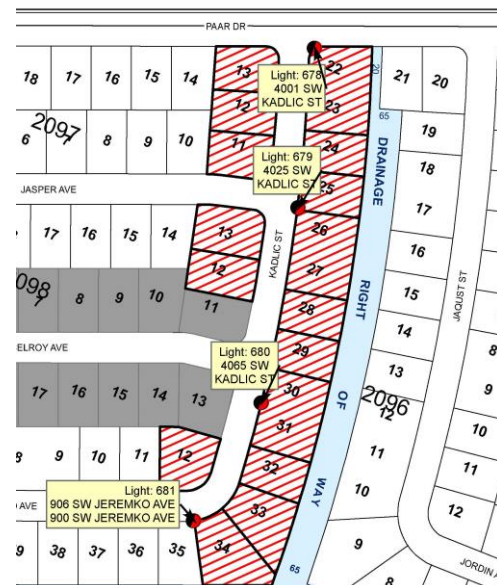
STREET LIGHTING ASSESSMENT AREA BOUNDARY #610
SE CABLE TERRACE – SECTION 13

BLOCK 614 LOTS 2 THRU 4



STREET LIGHTING ASSESSMENT AREA BOUNDARY #620
SW KADLIC STREET – SECTION 21

BLOCK 2096 LOTS 22 THRU 34
BLOCK 2097 LOTS 11 THRU 13
BLOCK 2098 LOTS 12 THRU 13
BLOCK 2099 LOT 12



STREET LIGHTING ASSESSMENT AREA BOUNDARY #621
SW FAIRGREEN ROAD – SECTION 35

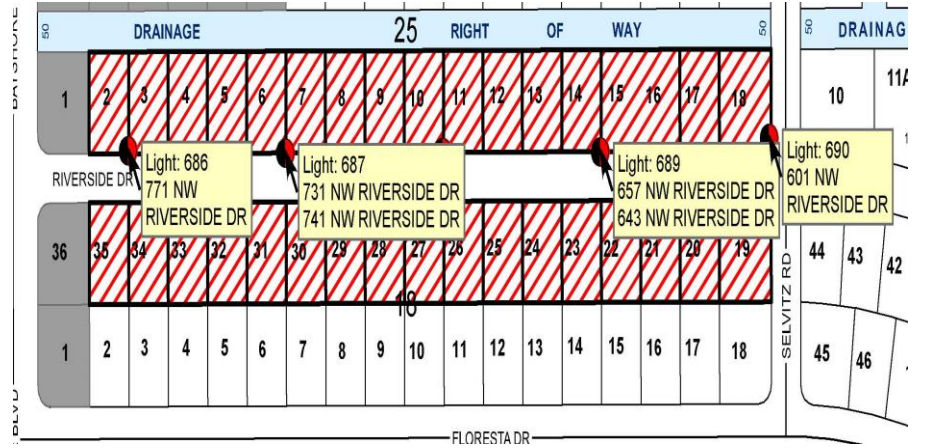
BLOCK 1789 LOTS 1 AND 22
BLOCK 1790 LOTS 1
BLOCK 1793 LOT 17
BLOCK 1794 LOTS 1 AND 21
BLOCK 1795 LOTS 1 AND 28
BLOCK 1798 LOT 1
BLOCK 1807 LOTS 1 THRU 22



STREET LIGHTING ASSESSMENT AREA BOUNDARY #624
NW RIVERSIDE DRIVE – SECTION 25

BLOCK 18 LOTS 19 THRU 35

BLOCK 25 LOTS 2 THRU 18



STREET LIGHTING ASSESSMENT AREA BOUNDARY #626
NW RUGBY DRIVE – SECTION 48

BLOCK 3235 LOTS 1 THRU 22

BLOCK 3236 LOTS 1 THRU 5

BLOCK 3266 LOT 1

BLOCK 3266 LOTS 7 THRU 21

BLOCK 3267 LOTS 1 AND 46

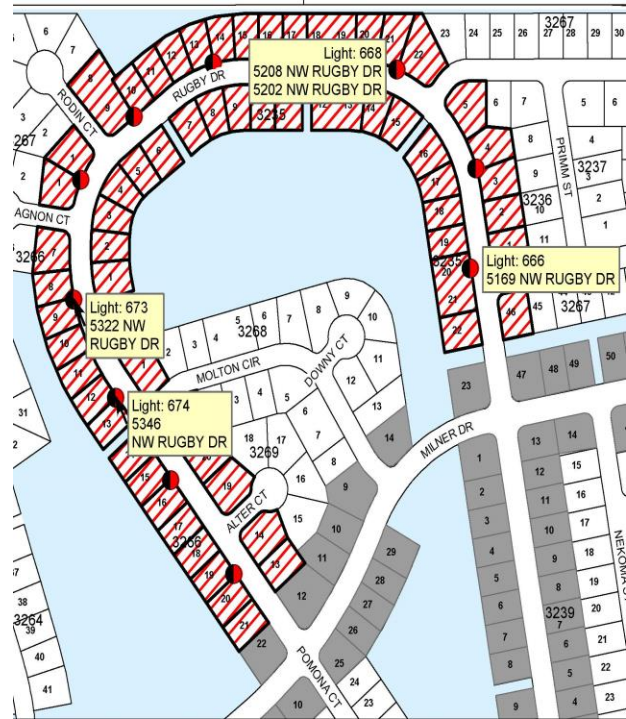
BLOCK 3267 LOTS 8 THRU 22

BLOCK 3268 LOT 1

BLOCK 3269 LOT 1

BLOCK 3269 LOTS 13 AND 14

BLOCK 3269 LOTS 19 AND 20



The public hearing will be held in the City Council Chambers at 6:30 p.m. on July 11, 2022, or as soon thereafter as the matter may be heard, located at the City of Port St. Lucie Municipal Complex (City Hall), 121 S.W. Port St. Lucie Blvd., Port St. Lucie, Florida 34984 for receiving public comment on the proposed collection of the assessments. All affected property owners have a right to appear at the hearing and may file written objections with the Council in care of the City Clerk prior to the meeting. Written objections may also be filed with the City Clerk at the hearing any time before the adjournment of the hearing. If a person decides to appeal any decision made by the Council with respect to any matter considered at the hearing, such person will need a record of the proceedings and may need to arrange for a court reporter to ensure that a verbatim record is made. In accordance with the Americans with Disabilities Act, persons needing special accommodations or an interpreter to participate in this proceeding should contact the City Clerk's office at 772-871-5157, at least seven days prior to the date of the hearing. Copies of the assessment roll, showing the amount of the assessment to be imposed against each parcel of property, and the legal documentation relating to the assessment will be available for inspection in 2023 when the assessment roll is prepared. They can be reviewed in the office of the City Clerk, located on the Third Floor of City Hall, 121 S.W. Port St. Lucie Blvd., Port St. Lucie, Florida. The assessments will be collected on the non-ad valorem portion of the tax bill to be mailed in November 2023 by the St. Lucie County Tax Collector. Failure to pay the assessment will cause a tax certificate to be issued against the property, which may result in a loss of title to your property. If you have any questions, please contact City of Port St. Lucie City Attorney's Office at 772-871-5294, Monday through Friday between 8:00 a.m. and 5:00 p.m.

Due to Covid-19, the City of Port St. Lucie is adhering to Centers of Disease Control's (CDC) recommendations. If you would like to provide public comment, please visit www.cityofpsl.com/tv for new public comment options as a result of Covid-19.

Sally Walsh, City Clerk
Publish: June 29, 2022