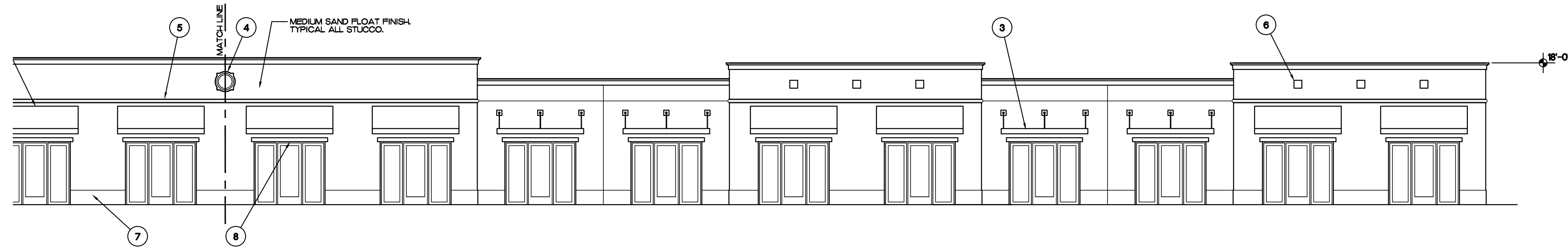
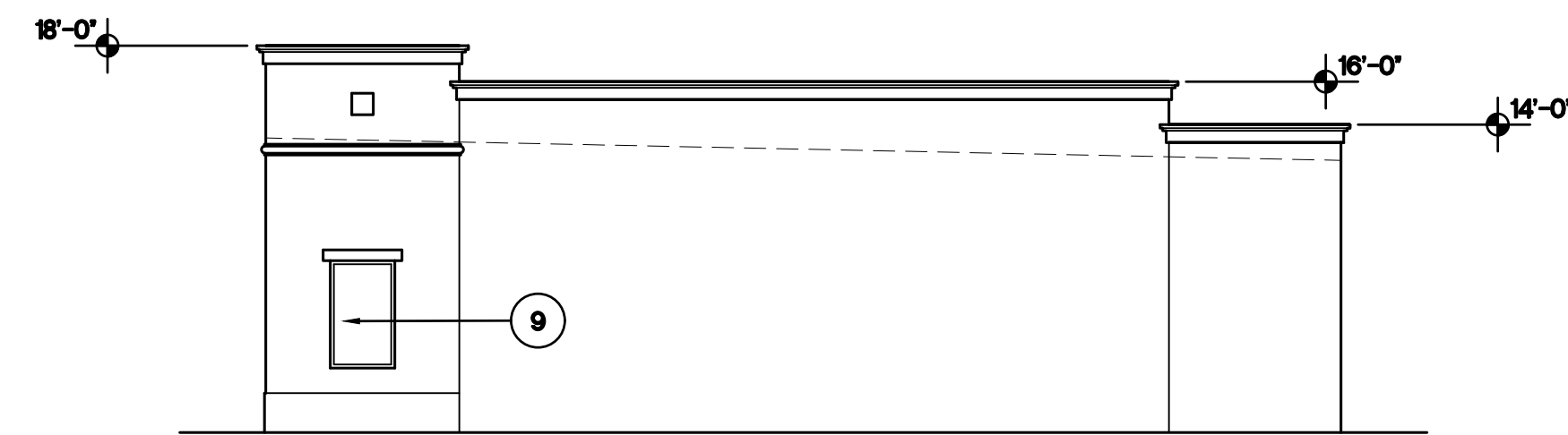


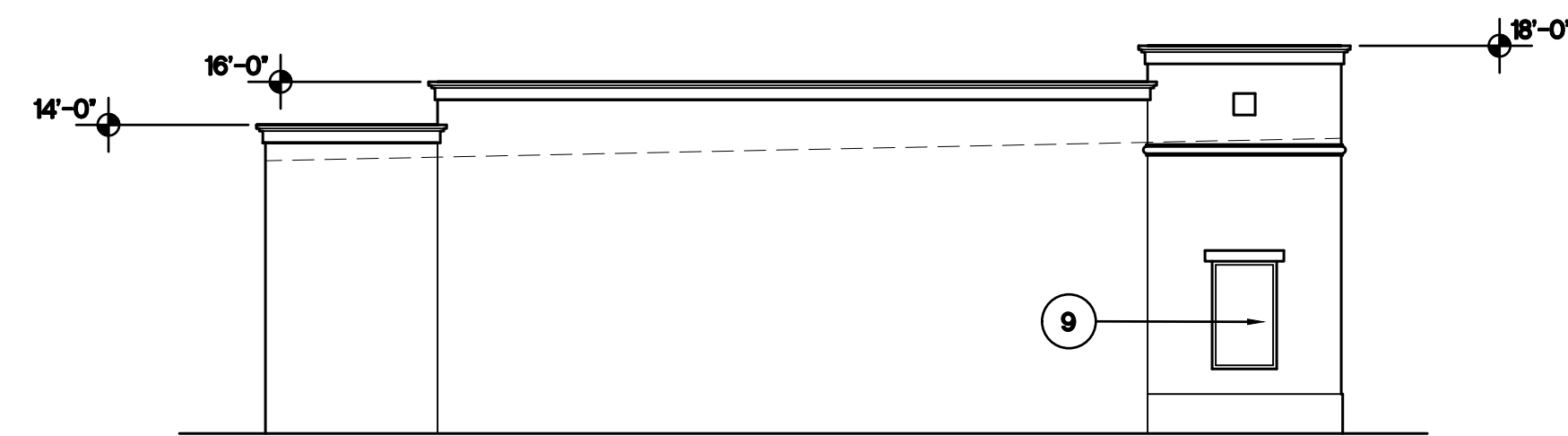
**1** BUILDING 1  
**PARTIAL WEST ELEVATION-PRIMARY FACADE**  
SCALE: 1/8"=1'-0"



**2** BUILDING 1  
**PARTIAL WEST ELEVATION-PRIMARY FACADE**  
SCALE: 1/8"=1'-0"



**3** BUILDING 1  
**SOUTH ELEVATION-SECONDARY FACADE**  
SCALE: 1/8"=1'-0"



**4** BUILDING 1  
**NORTH ELEVATION-PRIMARY FACADE**  
SCALE: 1/8"=1'-0"

**ARCHITECTURAL ELEMENTS**

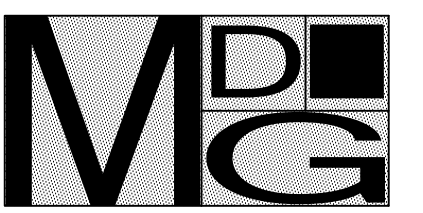
- ① THREE DIMENSION CORNICE TREATMENT
- ② FABRIC AWNING ABOVE STOREFRONT
- ③ ALUMINUM CANOPY ABOVE STOREFRONT
- ④ FOAM/STUCCO MEDALLION
- ⑤ FOAM/STUCCO TRIM
- ⑥ BUILT-UP STUCCO ACCENT SQUARES
- ⑦ BUILT-UP STUCCO BASE
- ⑧ BUILT-UP BANDING ABOVE OPENINGS
- ⑨ RECTANGULAR WINDOWS
- ⑩ MINIMUM 2' CHANGE IN HEIGHT OF PARAPETS

**460 Peacock Business Center**  
460 NW Peacock Boulevard  
Port St. Lucie, Florida

Revisions:  
\_\_\_\_\_  
\_\_\_\_\_  
\_\_\_\_\_

Content:  
**Building 1**  
**Exterior Elevations**

Dwg:  
\_\_\_\_\_  
Date: **6/15/21**  
Proj. No. **D2115**  
Sheet No.

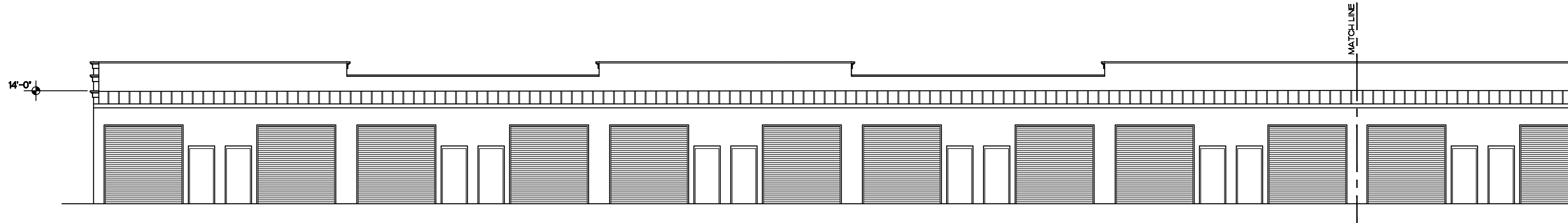


Morel De Guiramon  
architecture LLC

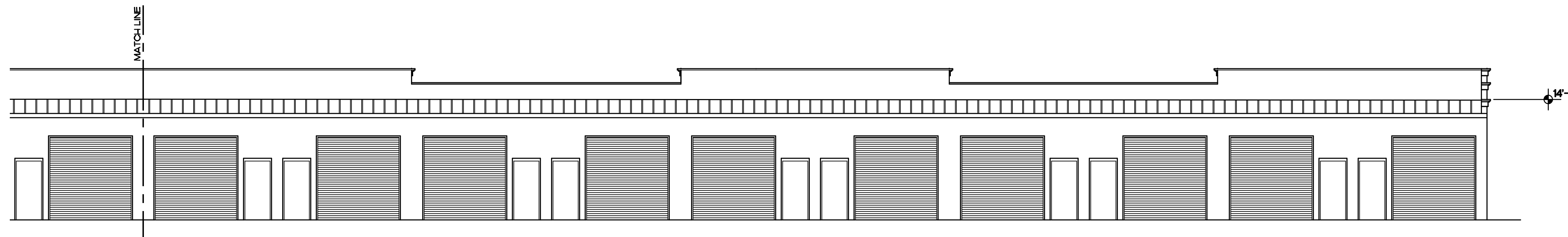
14080 Mahogany Avenue  
Jacksonville, Florida  
32258  
(561) 758 8454  
memorel@outlook.com

Corporation Number  
AA26001553

Michael Morel  
Architect  
AR0013132



**1** BUILDING 1  
**PARTIAL EAST ELEVATION-SECONDARY FACADE**  
SCALE: 1/8"=1'-0"



**2** BUILDING 1  
**PARTIAL EAST ELEVATION-SECONDARY FACADE**  
SCALE: 1/8"=1'-0"

**460 Peacock Business Center**  
460 NW Peacock Boulevard  
Port St. Lucie, Florida

Revisions:


Content:

**Building 1  
Exterior Elevations**

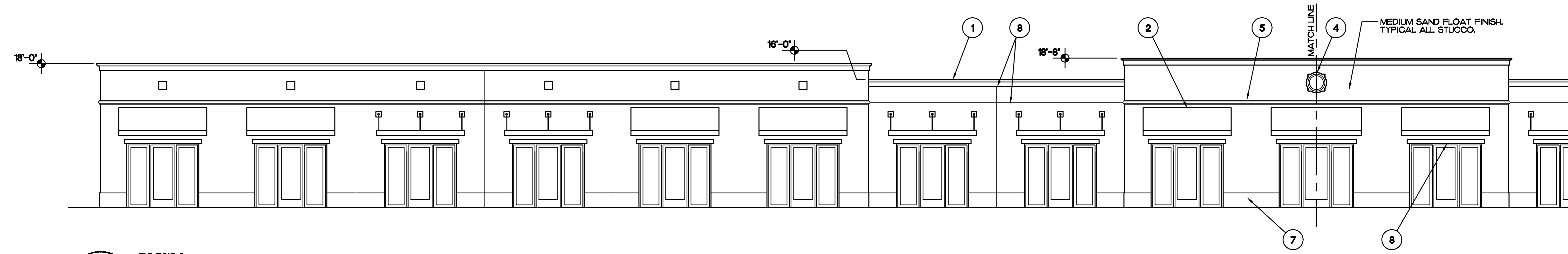
Dwg:

Date: **6/15/21**

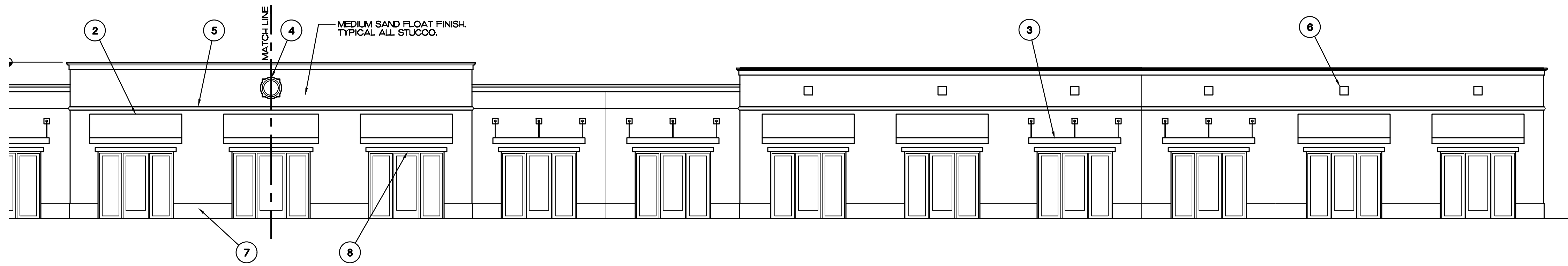
Proj. No.  
**D2115**

Sheet No.

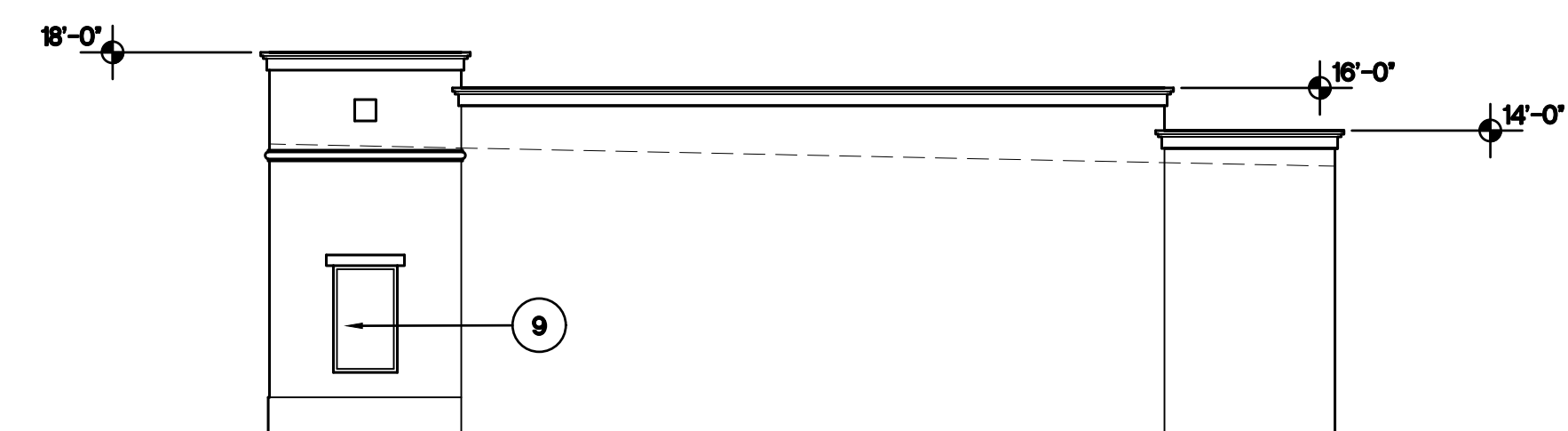
**A4.2**



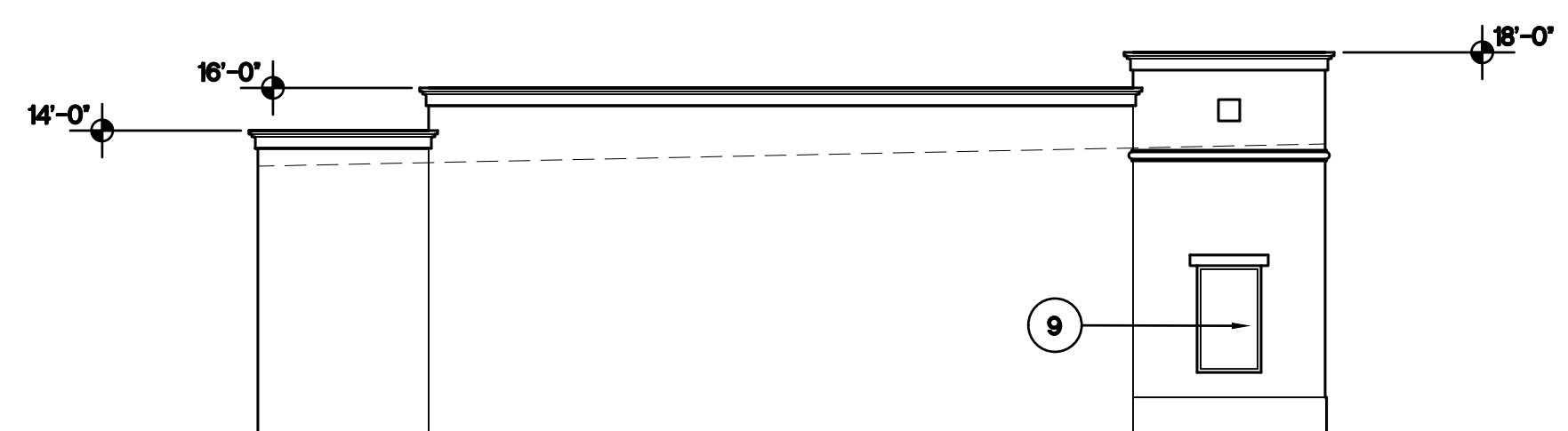
**1** BUILDING 2  
**PARTIAL EAST ELEVATION-PRIMARY FACADE**  
SCALE: 1/8"=1'-0"



**2** BUILDING 2  
**PARTIAL EAST ELEVATION-PRIMARY FACADE**  
SCALE: 1/8"=1'-0"



**3** BUILDING 2  
**NORTH ELEVATION-PRIMARY FACADE**  
SCALE: 1/8"=1'-0"



**4** BUILDING 2  
**SOUTH ELEVATION-SECONDARY FACADE**  
SCALE: 1/8"=1'-0"

**ARCHITECTURAL ELEMENTS**

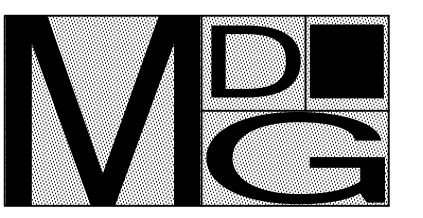
- ① THREE DIMENSION CORNICE TREATMENT
- ② FABRIC AWNING ABOVE STOREFRONT
- ③ ALUMINUM CANOPY ABOVE STOREFRONT
- ④ FOAM/STUCCO MEDALLION
- ⑤ FOAM/STUCCO TRIM
- ⑥ BUILT-UP STUCCO ACCENT SQUARES
- ⑦ BUILT-UP STUCCO BASE
- ⑧ BUILT-UP BANDING ABOVE OPENINGS
- ⑨ RECTANGULAR WINDOWS
- ⑩ MINIMUM 2' CHANGE IN HEIGHT OF PARAPETS

**460 Peacock Business Center**  
 460 NW Peacock Boulevard  
 Port St. Lucie, Florida

Revisions:


Content:  
**Building 2  
Exterior Elevations**

Dwg:  
Date: **6/15/21**  
Proj. No. **D2115**  
Sheet No.



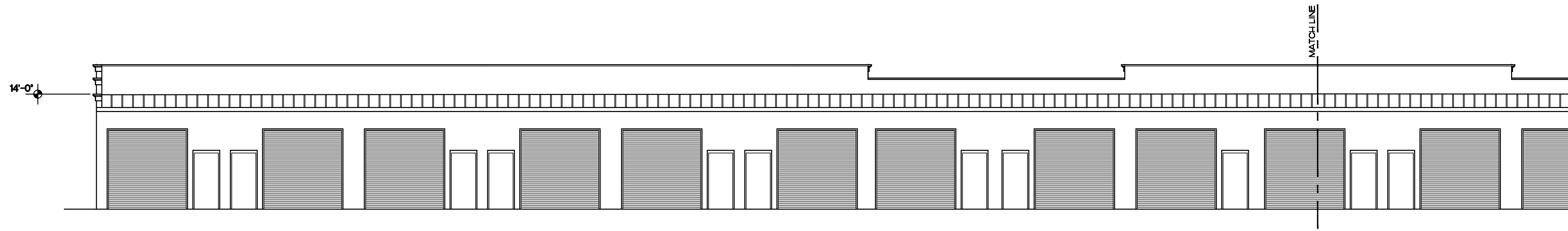
Morel De Guiramond  
architecture LLC

14080 Mahogany Avenue  
Jacksonville, Florida  
32258  
(561) 758 8454

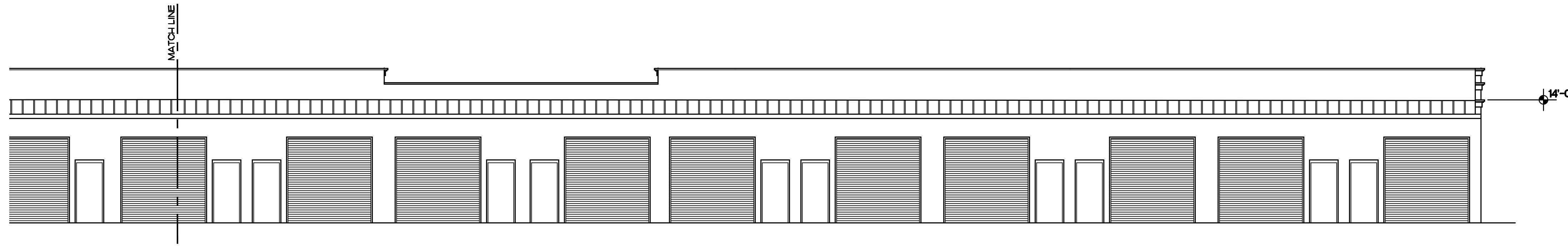
memorel@outlook.com

Corporation Number  
AA26001553

Michael Morel  
Architect  
AR0013132



**1** BUILDING 2  
**PARTIAL WEST ELEVATION-SECONDARY FACADE**  
SCALE: 1/8"=1'-0"



**2** BUILDING 2  
**PARTIAL WEST ELEVATION-SECONDARY FACADE**  
SCALE: 1/8"=1'-0"

**460 Peacock Business Center**  
460 NW Peacock Boulevard  
Port St. Lucie, Florida

Revisions:


Content:

**Building 2**  
**Exterior Elevations**

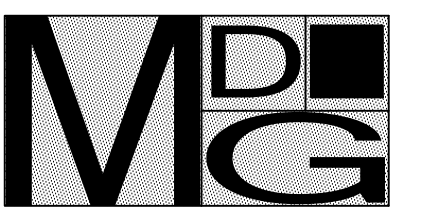
Dwg:

Date: **6/15/21**

Proj. No.  
**D2115**

Sheet No.

**A4.4**



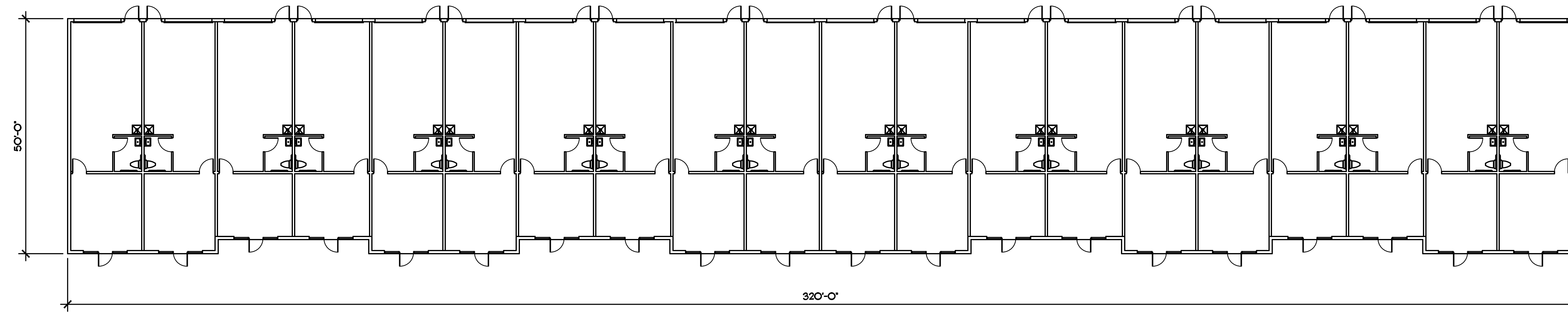
Morel De Guiramon  
architecture LLC

14080 Mahogany Avenue  
Jacksonville, Florida  
32258  
(904) 758 8454

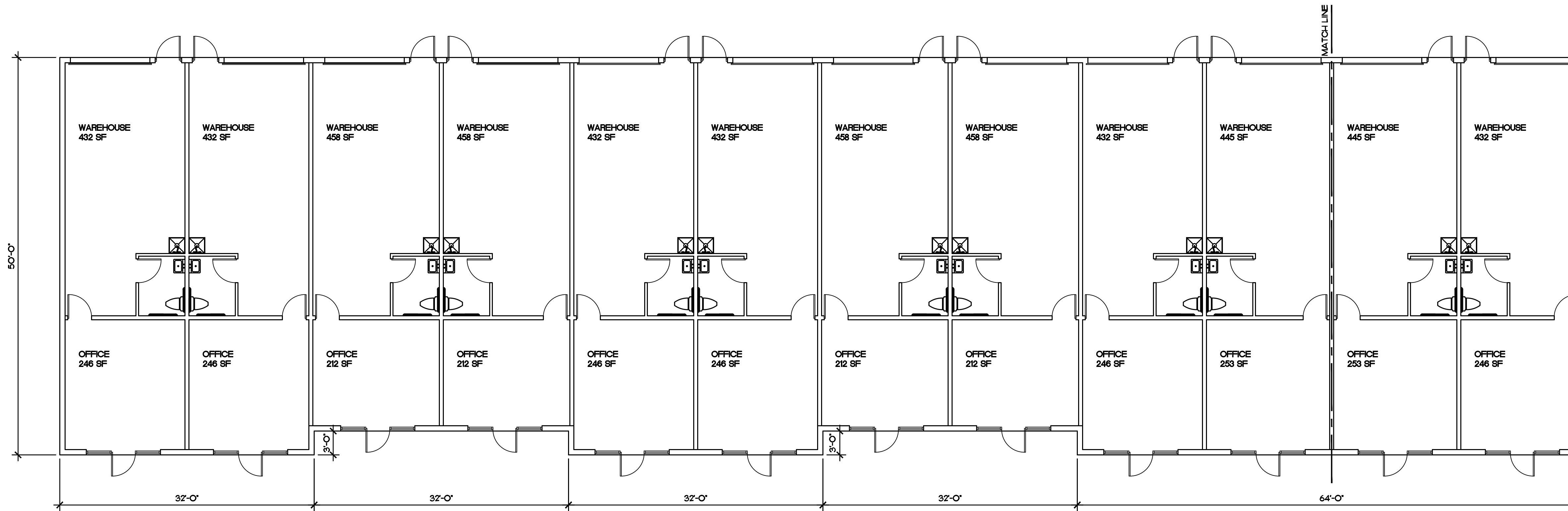
memorel@outlook.com

Corporation Number  
AA26001553

Michael Morel  
Architect  
AR0013132



**1** BUILDING 1  
**BUILDING PLAN**  
SCALE: 1/8"=1'-0"  
15,616 SF



**1** BUILDING 1  
**PARTIAL FLOOR PLAN**  
SCALE: 1/8"=1'-0"  
15,616 SF

**460 Peacock Business Center**  
460 NW Peacock Boulevard  
Port St. Lucie, Florida

Revisions:


Content:

**Building 1  
Floor Plan**

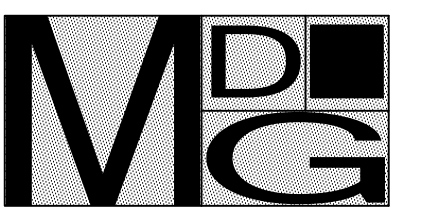
Dwg:

Date: **6/15/21**

Proj. No.  
**D2115**

Sheet No.

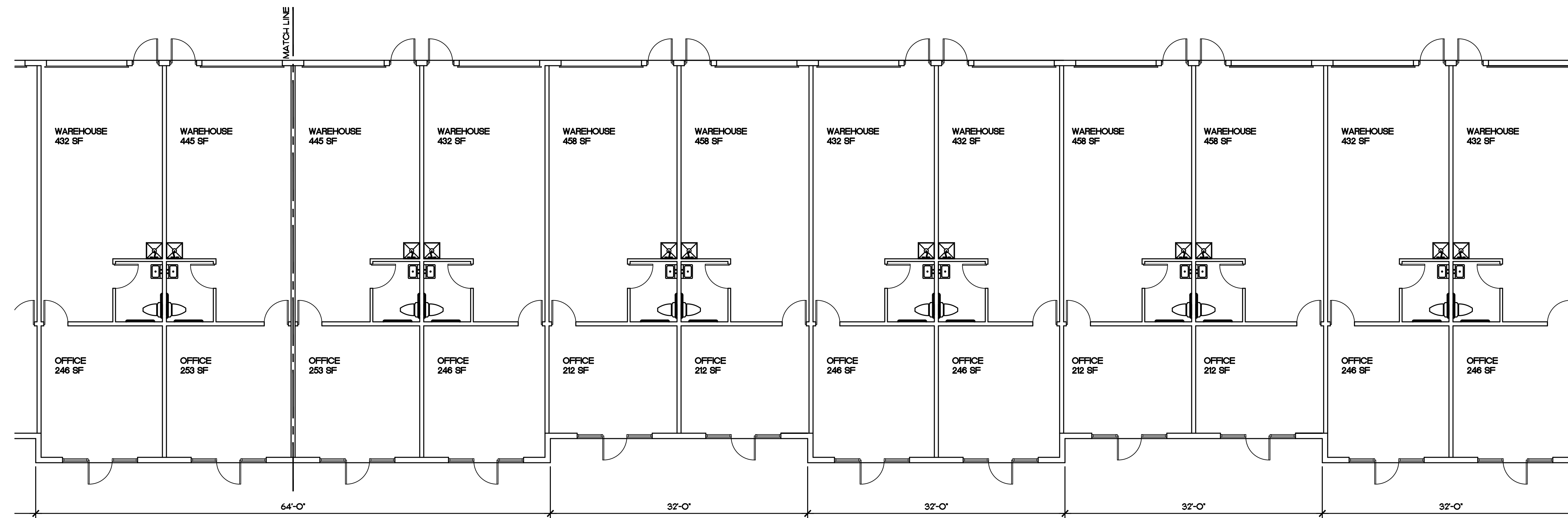
**A21**



Morel De Guiramon  
architecture LLC

14080 Mahogany Avenue  
Jacksonville, Florida  
32258  
(904) 758 8454  
memorel@outlook.com

Corporation Number  
AA26001553  
Michael Morel  
Architect  
AR0013132



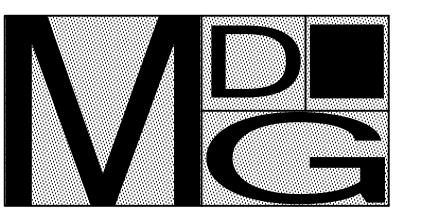
**1** BUILDING 1  
**PARTIAL FLOOR PLAN**  
SCALE: 1/8"=1'-0"  
15,616 SF

**460 Peacock Business Center**  
460 NW Peacock Boulevard  
Port St. Lucie, Florida

Revisions:


Content:  
**Building 1  
Floor Plan**

Dwg:  
Date: **6/15/21**  
Proj. No. **D2115**  
Sheet No.



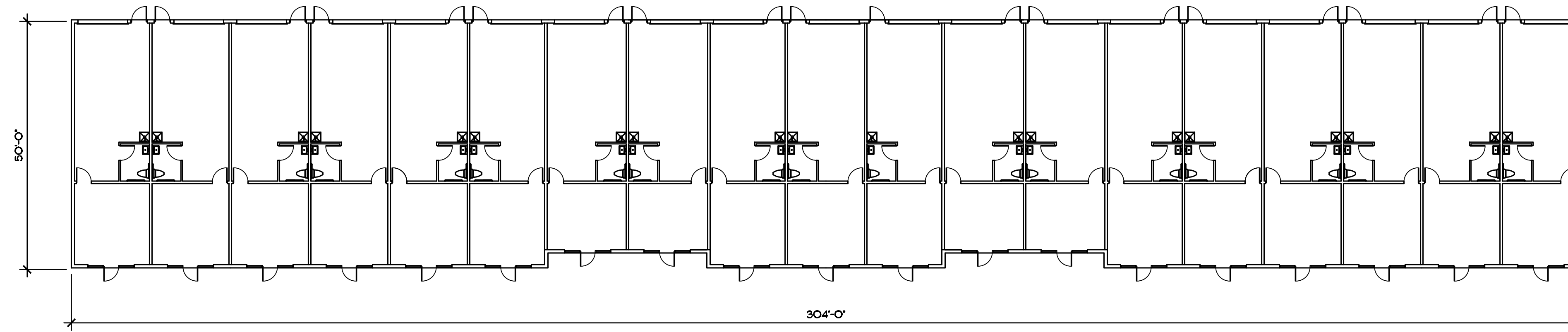
Morel De Guiramond  
architecture LLC

14080 Mahogany Avenue  
Jacksonville, Florida  
32258  
(904) 758 8454

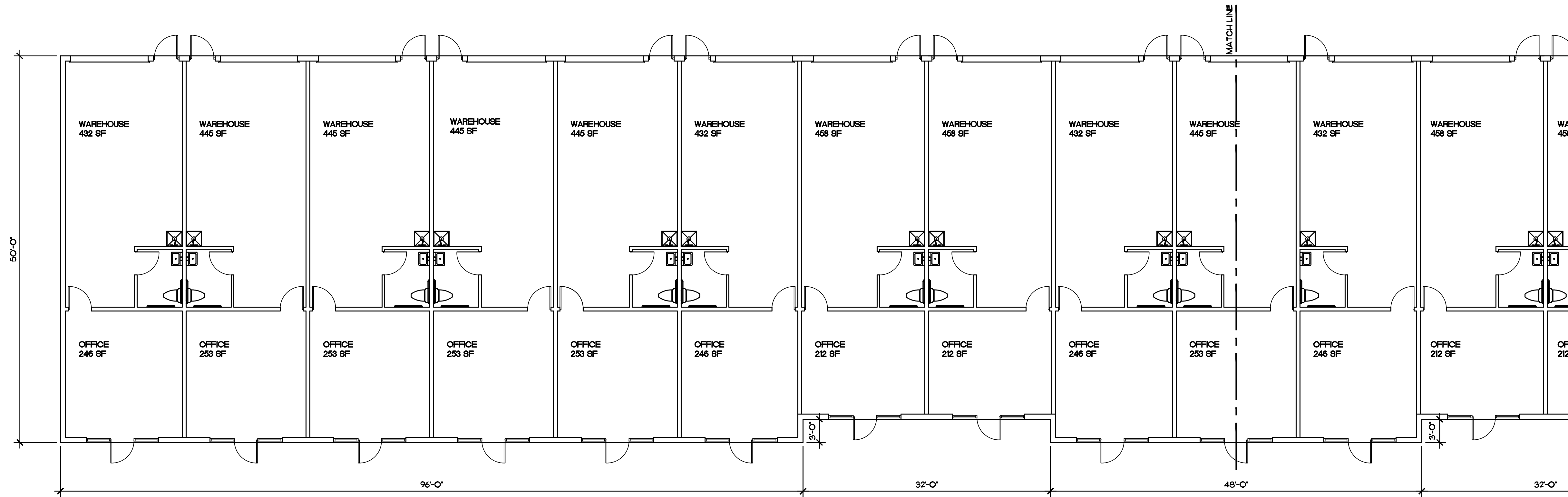
memorel@outlook.com

Corporation Number  
AA26001553

Michael Morel  
Architect  
AR0013132



**1** BUILDING 1  
BUILDING PLAN  
SCALE: 1/8"=1'-0"  
15,616 SF



**2** BUILDING 2  
PARTIAL FLOOR PLAN  
SCALE: 1/8"=1'-0"  
15,008 SF

**460 Peacock Business Center**  
460 NW Peacock Boulevard  
Port St. Lucie, Florida

Revisions:


Content:

**Building 2  
Floor Plan**

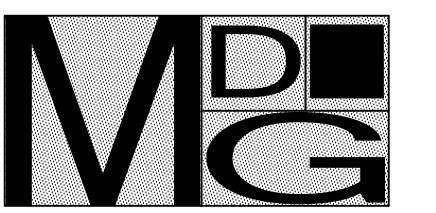
Dwg:

Date: **6/15/21**

Proj. No. **D2115**

Sheet No.

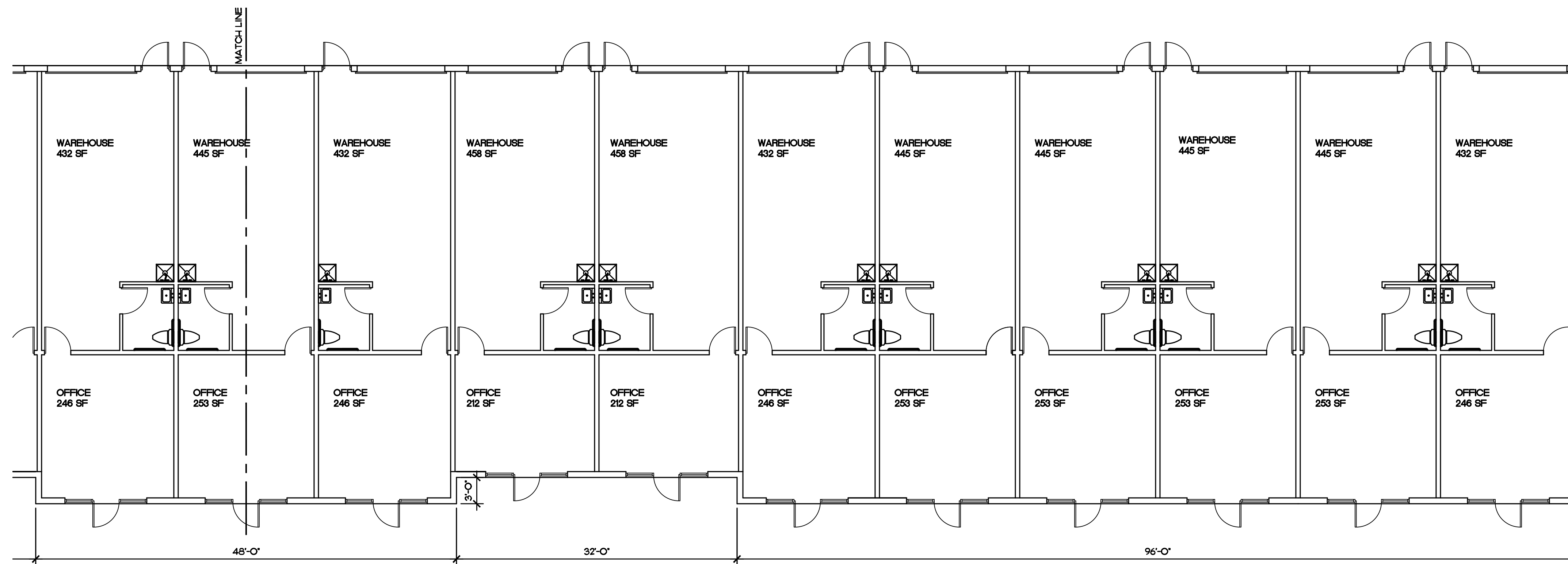
**A2.3**



Morel De Guiramon  
architecture LLC

14080 Mahogany Avenue  
Jacksonville, Florida  
32258  
(904) 758 8454  
memorel@outlook.com

Corporation Number  
AA26001553  
Michael Morel  
Architect  
AR0013132



**1** BUILDING 2  
**PARTIAL FLOOR PLAN**  
SCALE: 1/8"=1'-0"  
15,008 SF

**460 Peacock Business Center**  
460 NW Peacock Boulevard  
Port St. Lucie, Florida

Revisions:

Content:

**Building 2  
Floor Plan**

Dwg:

Date: **6/15/21**

Proj. No. **D2115**

Sheet No.

**A2.4**