

HERON PRESERVE AT TRADITION PHASE 2A

BEING A REPLAT OF PARCEL A, PULTE AT TRADITION PHASE 1, AS RECORDED IN PLAT BOOK 79, PAGE 25 AND A PORTION OF THE E/W 2 R/W (A 100 FOOT RIGHT-OF-WAY), AS RECORDED IN OFFICIAL RECORDS BOOK 3935, PAGE 2995 ALL OF THE PUBLIC RECORDS OF ST. LUCIE COUNTY, FLORIDA, LYING IN SECTION 22, TOWNSHIP 37 SOUTH, RANGE 39 EAST, CITY OF PORT ST. LUCIE, ST. LUCIE COUNTY, FLORIDA.

LEGAL DESCRIPTION:

PARCEL A, PULTE AT TRADITION PHASE 1, AS RECORDED IN PLAT BOOK 79, PAGE 25 OF THE PUBLIC RECORDS OF ST. LUCIE COUNTY, FLORIDA.

TOGETHER WITH

A PARCEL OF LAND BEING A PORTION OF THE E/W 2 R/W (A 100 FOOT RIGHT-OF-WAY), AS RECORDED IN OFFICIAL RECORDS BOOK 3935, PAGE 2995, PUBLIC RECORDS OF ST. LUCIE COUNTY, FLORIDA, BEING MORE PARTICULARLY DESCRIBED AS FOLLOWS:

COMMENCE AT THE MOST NORTHERLY NORTHWEST CORNER OF PARCEL A, PULTE AT TRADITION PHASE 1, AS RECORDED IN PLAT BOOK 79, PAGE 25 OF THE PUBLIC RECORDS OF ST. LUCIE COUNTY, FLORIDA; THENCE NORTH 90°00'00" EAST, ALONG THE SOUTH RIGHT-OF-WAY OF E/W 2 R/W (A 100.00 FOOT WIDE RIGHT-OF-WAY), A DISTANCE OF 285.48 FEET TO A POINT OF CURVE TO THE RIGHT HAVING A RADIUS OF 850.00 FEET, A CENTRAL ANGLE OF 44°08'59"; THENCE SOUTHEASTERLY ALONG THE ARC A DISTANCE OF 654.97 FEET; THENCE SOUTH 45°51'01" EAST, A DISTANCE OF 109.97 FEET TO THE POINT OF BEGINNING, BEING A POINT ON A NON-TANGENT CURVE CONCAVE TO THE NORTHEAST, HAVING A RADIUS OF 135.00 FEET, THE CHORD OF WHICH BEARS SOUTH 45°51'01" EAST, 250.80 FEET; THENCE SOUTHEASTERLY ALONG THE ARC OF SAID CURVE, A DISTANCE OF 321.67 FEET THROUGH A CENTRAL ANGLE OF 136°31'23"; THENCE NORTH 45°51'01" WEST, A DISTANCE OF 250.80 FEET TO THE POINT OF BEGINNING.

SAID LANDS LYING IN SECTION 22, TOWNSHIP 37 SOUTH, RANGE 39 EAST, CITY OF PORT ST. LUCIE, ST. LUCIE COUNTY, FLORIDA, CONTAINING 2,406,596 SQUARE FEET/55.2478 ACRES MORE OR LESS.

CERTIFICATE OF OWNERSHIP & DEDICATION:

STATE OF FLORIDA
COUNTY OF ST. LUCIE

PULTE HOME COMPANY, LLC, A MICHIGAN LIMITED LIABILITY COMPANY OWNER OF THE LAND DESCRIBED AND PLATTED HEREON AS HERON PRESERVE AT TRADITION PHASE 2A, BEING IN ST. LUCIE COUNTY, FLORIDA, HAVE CAUSED SAID LANDS TO BE SURVEYED AND PLATTED AS SHOWN HEREON AND HEREBY DEDICATES AS FOLLOWS:

- THE ROAD RIGHT-OF-WAY (TRACT R), AS SHOWN HEREON, IS HEREBY DEDICATED TO THE HERON PRESERVE AT TRADITION HOMEOWNERS ASSOCIATION, INC., A FLORIDA NOT FOR PROFIT CORPORATION, ITS SUCCESSORS AND ASSIGNS, AS A PRIVATE ROAD RIGHT-OF-WAY FOR THE PURPOSE OF PROVIDING ACCESS AND DRAINAGE INSTALLATION, AND IS THE MAINTENANCE OBLIGATION OF SAID HERON PRESERVE AT TRADITION HOMEOWNERS ASSOCIATION, INC., A FLORIDA NOT FOR PROFIT CORPORATION, ITS SUCCESSORS AND ASSIGNS. ALL STREETS OR ROADS DESIGNATED HEREON AS PRIVATE STREETS OR ROADS ARE HEREBY SPECIFICALLY SET ASIDE FOR THE USE OF THE ADJUTING PROPERTY OWNERS ONLY, AND IN NO WAY CONSTITUTE A DEDICATION TO THE GENERAL PUBLIC OR THE CITY OF PORT ST. LUCIE, IT BEING SPECIFICALLY UNDERSTOOD THAT NO OBLIGATION IS IMPOSED ON THE CITY NOR SHALL ANY REQUEST BE ENTERTAINED BY THE CITY TO MAINTAIN OR IMPROVE THE PRIVATE STREETS OR ROADS. AN EASEMENT OVER AND UNDER SAID PRIVATE ROAD RIGHT-OF-WAY IS ALSO DEDICATED IN FAVOR OF THE CITY OF PORT ST. LUCIE, ITS SUCCESSORS AND/OR ASSIGNS, FOR ACCESS TO, AND INSTALLATION AND MAINTENANCE OF, PUBLIC UTILITY FACILITIES, INCLUDING BUT NOT LIMITED TO WATER AND WASTEWATER LINES AND APPURTENANT FACILITIES, AND ACCESS FOR THE CITY OF PORT ST. LUCIE SERVICE AND EMERGENCY VEHICLES. THE CITY OF PORT ST. LUCIE SHALL NOT BE RESPONSIBLE FOR ANY MAINTENANCE OBLIGATIONS FOR SAID EASEMENT AREA EXCEPT AS SHALL RELATE TO THE SERVICING OF SUCH PUBLIC UTILITIES BY THE CITY OF PORT ST. LUCIE. A NON-EXCLUSIVE INGRESS, EGRESS, DRAINAGE, AND UTILITY EASEMENT OVER ALL ROADS, ROADWAYS, AND ROAD RIGHTS-OF-WAY SHOWN OR DESCRIBED ON THIS PLAT IS DEDICATED TO SOUTHERN GROVE COMMUNITY DEVELOPMENT DISTRICT NO. 5 (AS DEFINED BELOW), ACTING BY AND UNDER DELEGATED AUTHORITY FROM, AND RECEIVING SUCH DEDICATION FOR THE USE AND BENEFICIAL OWNERSHIP OF, DISTRICT NO. 6 (AS DEFINED BELOW), IN ACCORDANCE WITH THE DISTRICT INTERLOCAL AGREEMENT, ITS SUCCESSORS AND ASSIGNS.
- AN INGRESS AND EGRESS EASEMENT IS HEREBY DEDICATED OVER TRACT R TO TRADITION COMMUNITY DEVELOPMENT DISTRICT NO. 1, A COMMUNITY DEVELOPMENT DISTRICT ESTABLISHED IN ACCORDANCE WITH CHAPTER 190, FLORIDA STATUTES, ITS SUCCESSORS AND ASSIGNS, AND TO SOUTHERN GROVE COMMUNITY DEVELOPMENT DISTRICT NO. 5 (AS DEFINED BELOW), ACTING BY AND UNDER DELEGATED AUTHORITY FROM, AND RECEIVING SUCH DEDICATION FOR THE USE AND BENEFICIAL OWNERSHIP OF, DISTRICT NO. 6 (AS DEFINED BELOW), IN ACCORDANCE WITH THE DISTRICT INTERLOCAL AGREEMENT, ITS SUCCESSORS AND ASSIGNS, IT BEING SPECIFICALLY UNDERSTOOD THAT NO OBLIGATION IS IMPOSED ON THE DISTRICT NOR SHALL ANY REQUEST BE ENTERTAINED BY THE DISTRICTS TO MAINTAIN OR IMPROVE THE PRIVATE STREETS OR ROADS UNDERLYING SAID EASEMENT.
- ALL PLATTED UTILITY EASEMENTS (UE) SHALL PROVIDE THAT SUCH EASEMENTS SHALL ALSO BE EASEMENTS FOR THE CONSTRUCTION, INSTALLATION, MAINTENANCE, AND OPERATION OF CABLE TELEVISION SERVICES; PROVIDED, HOWEVER, NO SUCH CONSTRUCTION, INSTALLATION, MAINTENANCE, AND OPERATION OF CABLE TELEVISION SERVICES SHALL INTERFERE WITH THE FACILITIES AND SERVICES OF AN ELECTRIC, TELEPHONE, GAS, OR OTHER PUBLIC UTILITY. IN THE EVENT A CABLE TELEVISION COMPANY DAMAGES THE FACILITIES OF A PUBLIC UTILITY, IT SHALL BE SOLELY RESPONSIBLE FOR THE DAMAGES. THIS SECTION SHALL NOT APPLY TO THOSE PRIVATE EASEMENTS GRANTED BY A PARTICULAR ELECTRIC, TELEPHONE, GAS, OR OTHER PUBLIC UTILITY. SUCH CONSTRUCTION, INSTALLATION, MAINTENANCE, AND OPERATION SHALL COMPLY WITH THE NATIONAL ELECTRICAL SAFETY CODE AS ADOPTED BY THE FLORIDA PUBLIC SERVICE COMMISSION. UTILITY EASEMENTS ARE ALSO DEDICATED IN FAVOR OF THE CITY OF PORT ST. LUCIE, FLORIDA, ITS SUCCESSORS AND/OR ASSIGNS, FOR ACCESS TO, INSTALLATION AND MAINTENANCE OF PUBLIC UTILITIES AND FACILITIES INCLUDING, BUT NOT LIMITED TO, WATER AND WASTEWATER LINES AND APPURTENANT FACILITIES. THE CITY OF PORT ST. LUCIE, FLORIDA SHALL NOT BE RESPONSIBLE FOR ANY MAINTENANCE OBLIGATIONS FOR SAID EASEMENT EXCEPT AS SHALL RELATE TO THE SERVICING OF SUCH PUBLIC UTILITIES BY THE CITY OF PORT ST. LUCIE, FLORIDA.
- THE DRAINAGE EASEMENTS (DE) AS SHOWN HEREON, ARE HEREBY DEDICATED TO THE HERON PRESERVE AT TRADITION HOMEOWNERS ASSOCIATION, INC., A FLORIDA NOT FOR PROFIT CORPORATION, ITS SUCCESSORS AND ASSIGNS, AS PRIVATE DRAINAGE EASEMENTS FOR THE PURPOSE OF ACCESS TO AND THE INSTALLATION OF DRAINAGE FACILITIES, AND THEY ARE THE MAINTENANCE RESPONSIBILITIES OF SAID HERON PRESERVE AT TRADITION HOMEOWNERS ASSOCIATION, INC.
- THE OPEN SPACE TRACTS (L2, L4, L5 AND L6) AS SHOWN HEREON, ARE HEREBY DEDICATED TO THE HERON PRESERVE AT TRADITION HOMEOWNERS ASSOCIATION, INC., A FLORIDA NOT FOR PROFIT CORPORATION, ITS SUCCESSORS AND ASSIGNS, FOR OPEN SPACE PURPOSES INCLUDING DRAINAGE, AND THEY ARE THE MAINTENANCE RESPONSIBILITIES OF SAID HERON PRESERVE AT TRADITION HOMEOWNERS ASSOCIATION OF ST. LUCIE COUNTY, INC.
- THE WATER MANAGEMENT TRACTS (W2 AND W3), SHOWN OR DESCRIBED ON THIS PLAT ARE DEDICATED TO AND ARE THE MAINTENANCE RESPONSIBILITIES OF THE SOUTHERN GROVE COMMUNITY DEVELOPMENT DISTRICT NO. 5, A COMMUNITY DEVELOPMENT DISTRICT ESTABLISHED IN ACCORDANCE WITH CHAPTER 190, FLORIDA STATUTES ("DISTRICT NO. 5"), ACTING BY AND UNDER DELEGATED AUTHORITY FROM, AND RECEIVING SUCH DEDICATION FOR THE USE AND BENEFICIAL OWNERSHIP OF, THE SOUTHERN GROVE COMMUNITY DEVELOPMENT DISTRICT NO. 6, A COMMUNITY DEVELOPMENT DISTRICT ESTABLISHED IN ACCORDANCE WITH CHAPTER 190, FLORIDA STATUTES ("DISTRICT NO. 6"), IN ACCORDANCE WITH THE SECOND AMENDED AND RESTATED DISTRICT INTERLOCAL AGREEMENT DATED AS OF JULY 9, 2013, AND RECORDED AT OFFICIAL RECORDS BOOK 3539, PAGES 672-713, OF THE PUBLIC RECORDS OF ST. LUCIE COUNTY, FLORIDA ("DISTRICT INTERLOCAL AGREEMENT"); ITS SUCCESSORS AND ASSIGNS, FOR THE PURPOSE OF PROVIDING DRAINAGE, AND SURFACE WATER MANAGEMENT, AN INGRESS AND EGRESS EASEMENT OVER THE WATER MANAGEMENT TRACTS ARE HEREBY DEDICATED TO TRADITION COMMUNITY DEVELOPMENT DISTRICT NO. 1, ITS SUCCESSORS AND ASSIGNS FOR THE RIGHT TO DISCHARGE WATER TO SAID WATER MANAGEMENT TRACTS.
- THE WATER MANAGEMENT ACCESS EASEMENTS AND WATER MANAGEMENT EASEMENTS SHOWN OR DESCRIBED ON THIS PLAT ARE DEDICATED TO THE SOUTHERN GROVE COMMUNITY DEVELOPMENT DISTRICT NO. 5, A COMMUNITY DEVELOPMENT DISTRICT ESTABLISHED IN ACCORDANCE WITH CHAPTER 190, FLORIDA STATUTES ("DISTRICT NO. 5"), ACTING BY AND UNDER DELEGATED AUTHORITY FROM, AND RECEIVING SUCH DEDICATION FOR THE USE AND BENEFICIAL OWNERSHIP OF, THE SOUTHERN GROVE COMMUNITY DEVELOPMENT DISTRICT NO. 6, A COMMUNITY DEVELOPMENT DISTRICT ESTABLISHED IN ACCORDANCE WITH CHAPTER 190, FLORIDA STATUTES ("DISTRICT INTERLOCAL AGREEMENT"), ITS SUCCESSORS AND ASSIGNS, FOR THE PURPOSE OF PROVIDING INGRESS AND EGRESS FOR THE CITY OF PORT ST. LUCIE SERVICE AND EMERGENCY VEHICLES.
- THE LAKE MAINTENANCE EASEMENTS (LME) AS SHOWN HEREON, ARE HEREBY DEDICATED TO THE HERON PRESERVE AT TRADITION HOMEOWNERS ASSOCIATION, INC., A FLORIDA NOT FOR PROFIT CORPORATION, ITS SUCCESSORS AND ASSIGNS, AS LAKE MAINTENANCE EASEMENTS FOR THE PURPOSE OF ACCESS TO AND THE MAINTENANCE OF THE WATER MANAGEMENT TRACTS, AND THEY ARE THE MAINTENANCE RESPONSIBILITIES OF SAID HERON PRESERVE AT TRADITION HOMEOWNERS ASSOCIATION OF ST. LUCIE COUNTY, INC.
- LIFT STATION EASEMENT (LSE) AS SHOWN HEREON, IS A UTILITY EASEMENT WHICH IS HEREBY DEDICATED TO THE CITY OF PORT ST. LUCIE, ITS SUCCESSORS AND ASSIGNS, FOR ACCESS TO, AND THE INSTALLATION AND MAINTENANCE OF, PUBLIC UTILITIES FACILITIES, INCLUDING BUT NOT LIMITED TO, WATER AND WASTEWATER LINES AND APPURTENANT FACILITIES. THERE SHALL BE NO OTHER PUBLIC OR PRIVATE UTILITY FACILITIES INSTALLED IN, ON, OVER, UNDER, OR ACROSS THE EASEMENT AREA WITHOUT THE CITY'S WRITTEN PERMISSION. THERE SHALL BE NO IMPROVEMENTS OF ANY KIND INCLUDING, BUT NOT LIMITED TO, LANDSCAPING CONSTRUCTED WITHIN THE BOUNDARIES OF THE EASEMENT AREA WHICH WOULD RESTRICT THE OPERATION AND MAINTENANCE OF, OR WHICH MAY IN ANY MANNER RESULT IN HARM TO, THE CITY'S FACILITIES. HERON PRESERVE AT TRADITION HOMEOWNERS ASSOCIATION OF ST. LUCIE COUNTY, INC., A FLORIDA NOT FOR PROFIT CORPORATION, ITS SUCCESSORS OR ASSIGNS, SHALL OWN, MAINTAIN, REPAIR AND REPLACE ANY PERMITTED IMPROVEMENTS OVER THE UTILITY EASEMENT, WHICH ARE NOT PRECLUDED BY THE FOREGOING, WHICH MAY BE DAMAGED OR DESTROYED BY THE CITY OF PORT ST. LUCIE, ITS SUCCESSORS OR ASSIGNS, DESIGNERS OR CONTRACTORS IN THE OPERATION, MAINTENANCE OF, OR ACCESS TO, THE CITY'S FACILITIES. THE CITY OF PORT ST. LUCIE, ITS SUCCESSORS OR ASSIGNS, SHALL HAVE THE RIGHT TO REQUIRE THE REMOVAL OF ANY IMPROVEMENTS, WHICH ARE CONSTRUCTED IN VIOLATION OF THE CONDITIONS SET FORTH ABOVE. IN THE EVENT, SUCH VIOLATING IMPROVEMENTS ARE NOT REMOVED UPON REQUEST, THEY SHALL BE SUBJECT TO REMOVAL BY THE CITY OF PORT ST. LUCIE, ITS SUCCESSORS OR ASSIGNS, DESIGNERS OR CONTRACTORS WITHOUT LIABILITY OR RESPONSIBILITY THEREFORE. THE CITY OF PORT ST. LUCIE IS NOT RESPONSIBLE FOR THE MAINTENANCE OF THE LIFT STATION EASEMENT EXCEPT AS IT RELATES TO THE SERVICING OF PUBLIC UTILITIES BY THE CITY OF PORT ST. LUCIE.
- THE PRIVATE UTILITY EASEMENTS (PSUE) SHOWN HEREON ARE HEREBY DEDICATED IN FAVOR OF THE CITY OF PORT ST. LUCIE, FLORIDA, ITS SUCCESSORS AND/OR ASSIGNS, FOR ACCESS TO, AND INSTALLATION AND MAINTENANCE OF, PUBLIC UTILITY FACILITIES, INCLUDING BUT NOT LIMITED TO, WATER AND WASTE WATER LINES AND APPURTENANT FACILITIES. THE CITY OF PORT ST. LUCIE SHALL NOT BE RESPONSIBLE FOR ANY MAINTENANCE OBLIGATIONS FOR SAID EASEMENTS EXCEPT AS SHALL RELATE TO THE SERVICING OF SUCH PUBLIC UTILITIES BY THE CITY OF PORT ST. LUCIE. A NON-EXCLUSIVE INGRESS, EGRESS, DRAINAGE, AND UTILITY EASEMENT OVER ALL ROADS, ROADWAYS, AND ROAD RIGHTS-OF-WAY SHOWN OR DESCRIBED ON THIS PLAT IS DEDICATED TO SOUTHERN GROVE COMMUNITY DEVELOPMENT DISTRICT NO. 5 (AS DEFINED BELOW), ACTING BY AND UNDER DELEGATED AUTHORITY FROM, AND RECEIVING SUCH DEDICATION FOR THE USE AND BENEFICIAL OWNERSHIP OF, DISTRICT NO. 6 (AS DEFINED BELOW), IN ACCORDANCE WITH THE DISTRICT INTERLOCAL AGREEMENT, ITS SUCCESSORS AND ASSIGNS, FOR THE PURPOSE OF PROVIDING DRAINAGE, AND SURFACE WATER MANAGEMENT AND IS THE MAINTENANCE RESPONSIBILITY OF SAID DISTRICT, ITS SUCCESSORS AND ASSIGNS.
- PARCEL 2B IS HEREBY PRESERVED FOR PULTE HOME COMPANY, LLC, A MICHIGAN LIMITED LIABILITY COMPANY.
- THE CONSERVATION TRACT P, SHOWN OR DESCRIBED ON THIS PLAT IS DEDICATED TO THE SOUTHERN GROVE COMMUNITY DEVELOPMENT DISTRICT NO. 5, A COMMUNITY DEVELOPMENT DISTRICT ESTABLISHED IN ACCORDANCE WITH CHAPTER 190, FLORIDA STATUTES ("DISTRICT NO. 5"), ACTING BY AND UNDER DELEGATED AUTHORITY FROM, AND RECEIVING SUCH DEDICATION FOR THE USE AND BENEFICIAL OWNERSHIP OF, THE SOUTHERN GROVE COMMUNITY DEVELOPMENT DISTRICT NO. 6, A COMMUNITY DEVELOPMENT DISTRICT ESTABLISHED IN ACCORDANCE WITH CHAPTER 190, FLORIDA STATUTES ("DISTRICT NO. 6"), (AS DEFINED IN THE BELOW-DESCRIBED DISTRICT INTERLOCAL AGREEMENT) IN WHICH THE PLATTED LANDS LIE, IN ACCORDANCE WITH THE SECOND AMENDED AND RESTATED DISTRICT INTERLOCAL AGREEMENT DATED AS OF JULY 9, 2013, AND RECORDED AT OFFICIAL RECORDS BOOK 3539, PAGES 672-713, OF THE PUBLIC RECORDS OF ST. LUCIE COUNTY, FLORIDA, AS AMENDED ("DISTRICT INTERLOCAL AGREEMENT"), ITS SUCCESSORS AND ASSIGNS, FOR THE PURPOSE OF PROVIDING DRAINAGE, AND SURFACE WATER MANAGEMENT AND IS THE MAINTENANCE RESPONSIBILITY OF SAID DISTRICT, ITS SUCCESSORS AND ASSIGNS.

CERTIFICATE OF OWNERSHIP & DEDICATION:

IN WITNESS WHEREOF, THE ABOVE NAMED MICHIGAN LIMITED LIABILITY COMPANY HAS CAUSED THESE PRESENTS TO BE SIGNED BY ITS DIVISION VICE PRESIDENT, THIS _____ DAY OF _____, 2021.

WITNESS: _____
PRINT NAME

BY: _____
PATRICK GONZALEZ
DIVISION VICE PRESIDENT

WITNESS: _____
PRINT NAME

ACKNOWLEDGEMENT:

STATE OF FLORIDA)
COUNTY OF PALM BEACH)

THE FOREGOING INSTRUMENT WAS ACKNOWLEDGED BEFORE ME BY MEANS OF ___ PHYSICAL PRESENCE OR ___ ONLINE NOTARIZATION, THIS _____ DAY OF _____, 2021, BY PATRICK GONZALEZ, DIVISION VICE PRESIDENT, ON BEHALF OF THE PULTE HOME COMPANY, A MICHIGAN LIMITED LIABILITY COMPANY, WHO IS ___ PERSONALLY KNOWN TO ME OR HAS PRODUCED _____ AS IDENTIFICATION.

WITNESS MY HAND AND OFFICIAL SEAL THIS _____ DAY OF _____, 2021.

NOTARY PUBLIC

PRINT NAME
MY COMMISSION EXPIRES: _____

COMMISSION NUMBER: _____

ACKNOWLEDGEMENT:

STATE OF FLORIDA)
COUNTY OF ST. LUCIE)

THE FOREGOING INSTRUMENT WAS ACKNOWLEDGED BEFORE ME BY MEANS OF ___ PHYSICAL PRESENCE OR ___ ONLINE NOTARIZATION, THIS _____ DAY OF _____, 2021, BY GREGORY J. ORAVEK, MAYOR, ON BEHALF OF THE CITY OF PORT ST. LUCIE, A MUNICIPAL CORPORATION OF THE STATE OF FLORIDA, WHO IS ___ PERSONALLY KNOWN TO ME OR HAS PRODUCED _____ AS IDENTIFICATION.

NOTARY PUBLIC

PRINT NAME
MY COMMISSION EXPIRES: _____

COMMISSION NUMBER: _____

ACCEPTANCE OF DEDICATIONS AND RESERVATIONS:

STATE OF FLORIDA)
COUNTY OF PALM BEACH)

THE HERON PRESERVE AT TRADITION HOMEOWNERS ASSOCIATION OF ST. LUCIE COUNTY, INC., A FLORIDA CORPORATION NOT FOR PROFIT, HEREBY ACCEPTS THE DEDICATIONS OR RESERVATIONS AND OTHER OBLIGATIONS TO SAID ASSOCIATION AS STATED AND SHOWN HEREON, AND HEREBY ACCEPTS ITS MAINTENANCE OBLIGATIONS FOR SAME AS STATED HEREON, DATED THIS _____ DAY OF _____, 2021.

WITNESS: _____
PRINT NAME

BY: _____
HERON PRESERVE AT TRADITION HOMEOWNERS ASSOCIATION, INC
A FLORIDA CORPORATION NOT FOR PROFIT
DAVID KANAREK
PRESIDENT

WITNESS: _____
PRINT NAME

ACKNOWLEDGEMENT:

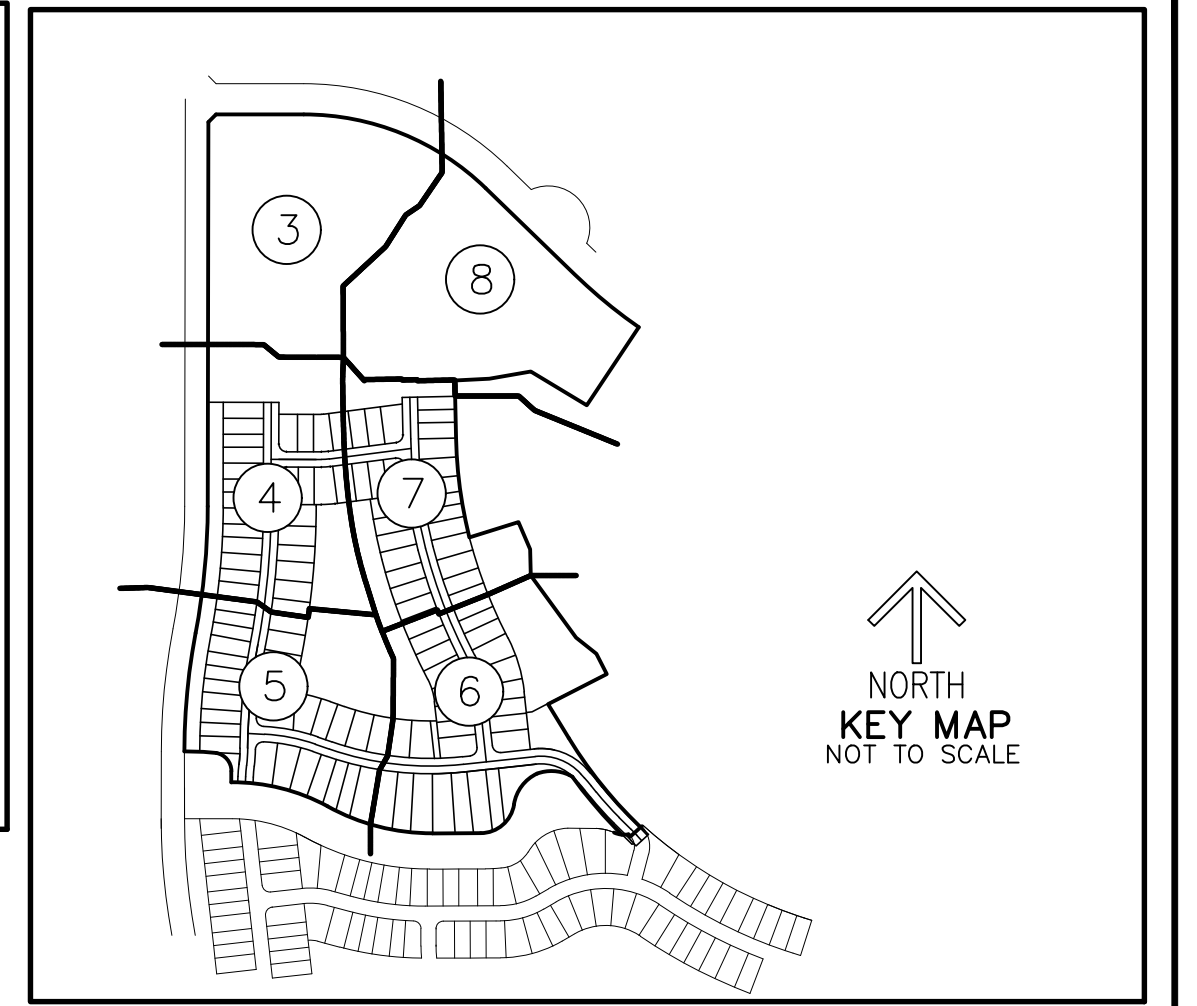
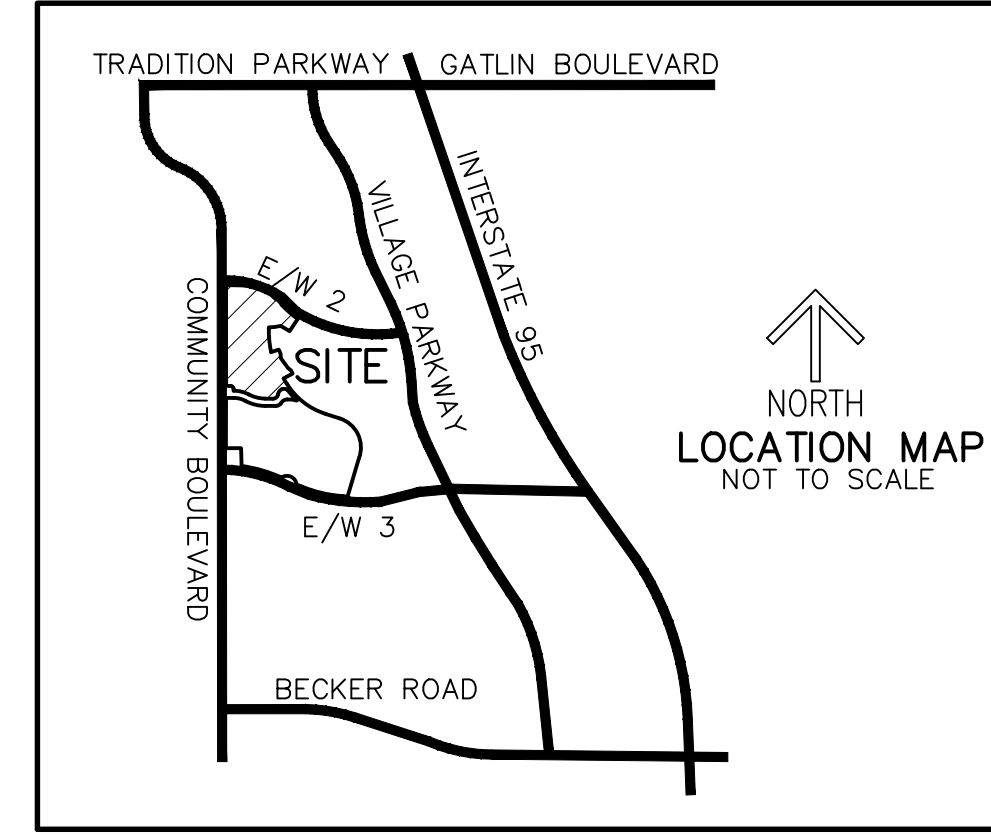
STATE OF FLORIDA)
COUNTY OF ST. LUCIE)

THE FOREGOING INSTRUMENT WAS ACKNOWLEDGED BEFORE ME BY MEANS OF ___ PHYSICAL PRESENCE OR ___ ONLINE NOTARIZATION, THIS _____ DAY OF _____, 2021, BY DAVID KANAREK, PRESIDENT, ON BEHALF OF THE HERON PRESERVE AT TRADITION HOMEOWNERS ASSOCIATION, INC, A FLORIDA CORPORATION NOT FOR PROFIT, WHO IS ___ PERSONALLY KNOWN TO ME OR HAS PRODUCED _____ AS IDENTIFICATION.

NOTARY PUBLIC

PRINT NAME
MY COMMISSION EXPIRES: _____

COMMISSION NUMBER: _____



ACCEPTANCE OF DEDICATION:

THE SOUTHERN GROVE COMMUNITY DEVELOPMENT DISTRICT NO. 5, A COMMUNITY DEVELOPMENT DISTRICT ESTABLISHED IN ACCORDANCE WITH CHAPTER 190, FLORIDA STATUTES ("DISTRICT NO. 5"), ACTING FOR ITSELF AND ON BEHALF OF EACH OF THE OTHER "DISTRICTS" AS DEFINED IN THE SECOND AMENDED AND RESTATED DISTRICT INTERLOCAL AGREEMENT DATED AS OF JULY 9, 2013, AND RECORDED AT OFFICIAL RECORDS BOOK 3539, PAGES 672-713, OF THE PUBLIC RECORDS OF ST. LUCIE COUNTY, FLORIDA, HEREBY ACCEPTS THE DEDICATIONS OF WATER MANAGEMENT TRACTS, WATER MANAGEMENT EASEMENTS AND WATER MANAGEMENT ACCESS EASEMENTS, NON-EXCLUSIVE INGRESS, EGRESS, DRAINAGE, AND UTILITY EASEMENT, SET FORTH UPON THE WITHIN PLAT AND SPECIFICALLY DEDICATED TO DISTRICT NO. 5, PROVIDED, HOWEVER, THAT ACCEPTANCE OF SUCH DEDICATIONS AND OF THE OBLIGATION TO OPERATE AND MAINTAIN SUCH FACILITIES IS EXPRESSLY CONDITIONED UPON (I) COMPLETION OF CONSTRUCTION OF ALL WATER MANAGEMENT SYSTEM IMPROVEMENTS FOR THE PHASE OF SUCH SYSTEM IN WHICH THE DEDICATED TRACTS AND EASEMENTS ARE LOCATED IN STRICT COMPLIANCE WITH BOTH THE APPROVED PLANS FOR, AND THE REQUIREMENTS OF ALL REGULATORY AUTHORITIES EXERCISING JURISDICTION OVER, SUCH IMPROVEMENTS, AND (II) COMPLIANCE WITH ALL SURFACE WATER MANAGEMENT SYSTEM TURNOVER REQUIREMENTS RELATING TO SUCH FACILITIES, AS SET FORTH IN THE POLICES AND PROCEDURES MANUAL FOR THE DISTRICTS. DISTRICT NO. 5 DOES NOT ACCEPT ANY OTHER RIGHT-OF-WAY, EASEMENT, TRACT, OR OTHER INTEREST IN REAL ESTATE OTHERWISE DEDICATED TO THE PUBLIC.

DATED THIS _____ DAY OF _____, 2021

CHAIRMAN: _____ SECRETARY: _____

ACCEPTANCE OF DEDICATION:

TRADITION COMMUNITY DEVELOPMENT DISTRICT NO. 1, A COMMUNITY DEVELOPMENT DISTRICT ESTABLISHED IN ACCORDANCE WITH CHAPTER 190, FLORIDA STATUTES, HEREBY ACCEPTS THE DEDICATIONS OF INGRESS AND EGRESS OF TRACT R, IRRIGATION EASEMENTS (IQE), SET FORTH UPON THE WITHIN PLAT AND SPECIFICALLY DEDICATED TO SUCH DISTRICT.

DATED THIS _____ DAY OF _____, 2021

CHAIRMAN: _____ SECRETARY: _____

CLERK'S RECORDING CERTIFICATE:

STATE OF FLORIDA
COUNTY OF ST. LUCIE

I, MICHELLE R. MILLER, CLERK OF THE CIRCUIT COURT OF ST. LUCIE COUNTY, FLORIDA, DO HEREBY CERTIFY THAT THIS PLAT HAS BEEN EXAMINED, AND THAT IT COMPLIES IN FORM WITH ALL THE REQUIREMENTS OF THE LAWS OF FLORIDA PERTAINING TO MAPS AND PLATS, AND THAT THIS PLAT HAS BEEN FILED FOR RECORD IN PLAT BOOK _____, PAGE(S) _____ OF THE PUBLIC RECORDS OF ST. LUCIE COUNTY, FLORIDA, THIS _____ DAY OF _____, 2021.

MICHELLE R. MILLER
CLERK OF THE CIRCUIT COURT
ST. LUCIE COUNTY, FLORIDA

CLERK OF THE COURT

APPROVAL OF CITY:

STATE OF FLORIDA
CITY OF PORT ST. LUCIE

IT IS HEREBY CERTIFIED THAT THIS PLAT OF HERON PRESERVE AT TRADITION PHASE 2A, HAS BEEN OFFICIALLY APPROVED, INCLUDING THE RELEASE OF ALL PRIOR DEDICATIONS (AS SHOWN ON THE PLAT OF PULTE AT TRADITION PHASE 1) APPLICABLE TO THE LANDS BEING PLATTED HEREIN AND ALL DEDICATIONS TO THE CITY HEREIN ARE ACCEPTED FOR RECORD BY THE CITY COUNCIL OF THE CITY OF PORT ST. LUCIE, FLORIDA, THIS _____ DAY OF _____, 2021.

ATTEST: _____ CITY OF PORT ST. LUCIE

SALLY WALSH, CITY CLERK SHANNON M. MARTIN., MAYOR

CITY OF PORT ST. LUCIE

THIS INSTRUMENT PREPARED BY
DAVID P. LINDLEY
OF
CAULFIELD and WHEELER, INC.
SURVEYORS — ENGINEERS — PLANNERS
7900 GLADES ROAD, SUITE 100
BOCA RATON, FLORIDA 33434 — (561)392-1991
CERTIFICATE OF AUTHORIZATION NO. LB3591

CITY OF PORT ST. LUCIE
PROJECT NO. P21-121
PSLUSD #5308B

HERON PRESERVE AT TRADITION PHASE 2A

BEING A REPLAT OF PARCEL A, PULTE AT TRADITION PHASE 1, AS RECORDED IN PLAT BOOK 79, PAGE 25 AND A PORTION OF THE E/W 2 R/W (A 100 FOOT RIGHT-OF-WAY), AS RECORDED IN OFFICIAL RECORDS BOOK 3935, PAGE 2995 ALL OF THE PUBLIC RECORDS OF ST. LUCIE COUNTY, FLORIDA, LYING IN SECTION 22, TOWNSHIP 37 SOUTH, RANGE 39 EAST, CITY OF PORT ST. LUCIE, ST. LUCIE COUNTY, FLORIDA.

THIS INSTRUMENT PREPARED BY
DAVID P. LINDLEY
OF
CAULFIELD and WHEELER, INC.
SURVEYORS - ENGINEERS - PLANNERS
7900 GLADES ROAD, SUITE 100
BOCA RATON, FLORIDA 33434 - (561)392-1991
CERTIFICATE OF AUTHORIZATION NO. LB3591

PLAT BOOK _____

PAGE _____

SHEET 2 OF 8



TITLE CERTIFICATION:

STATE OF FLORIDA
COUNTY OF PALM BEACH

THE UNDERSIGNED, STEVEN R. PARSON, DULY LICENSED IN THE STATE OF FLORIDA, DOES HEREBY CERTIFY THAT, AS OF THE _____ DAY OF _____ 2021:

- (A) THE RECORD TITLE TO THE LAND AS DESCRIBED AND SHOWN HEREON IS IN THE NAME OF PULTE HOME COMPANY, LLC, A MICHIGAN LIMITED LIABILITY COMPANY, THE ENTITY EXECUTING THE DEDICATION.
- (B) THERE ARE NO MORTGAGES OF RECORD ENCUMBERING THE LAND DESCRIBED HEREIN.
- (C) PURSUANT TO FLORIDA STATUTES SECTION 197.192, ALL TAXES HAVE BEEN PAID THROUGH THE YEAR 2020.
- (D) ALL ASSESSMENTS CURRENTLY DUE AND PAYABLE AND OTHER ITEMS HELD AGAINST SAID LAND HAVE BEEN SATISFIED.
- (E) THERE ARE ENCUMBRANCES OF RECORD, BUT THOSE ENCUMBRANCES DO NOT PROHIBIT THE CREATION OF THE SUBDIVISION DEPICTED BY THIS PLAT.

STEVEN R. PARSON, PARTNER
FLORIDA BAR NO. 351903
SHUTTS & BOWEN LLP
525 OKEECHOBEE BLVD., SUITE 1100
WEST PALM BEACH, FL 33401

SURVEYOR'S NOTES:

- 1) BEARINGS SHOWN HEREON ARE RELATIVE TO A RECORD PLAT BEARING OF N.00°05'34"E. ALONG THE WEST LINE OF PARCEL A, PULTE AT TRADITION PHASE 1, AS RECORDED IN PLAT BOOK 79, PAGE 25 OF THE PUBLIC RECORDS OF ST. LUCIE COUNTY, FLORIDA.
- 2) ALL LINES INTERSECTING CIRCULAR CURVES ARE RADIAL UNLESS NOTED. (NR) DENOTES NON-RADIAL.
- 3) NOTE: THIS PLAT HAS BEEN REVIEWED FOR CONFORMITY TO CHAPTER 177, PART 1 FLORIDA STATUTES BY A PROFESSIONAL SURVEYOR AND MAPPER EMPLOYED BY OR UNDER CONTRACT WITH THE CITY OF PORT ST. LUCIE.
- 4) AS PER FLORIDA STATUTES 177, THE UNDERLYING/PREVIOUSLY RECORDED ITEMS IN PULTE AT TRADITION PHASE 1, AS RECORDED IN PLAT BOOK 79, PAGE 25 OF THE PUBLIC RECORDS OF ST. LUCIE COUNTY, FLORIDA LYING WITHIN THIS REPLAT, SUCH AS EASEMENTS, TRACTS, PARCELS AND RIGHTS-OF-WAYS WILL BE VACATED BY VIRTUE OF THIS RE-PLAT.
- 5) "NOTICE" THIS PLAT, AS RECORDED IN ITS GRAPHIC FORM, IS THE OFFICIAL DEPICTION OF THE SUBDIVIDED LANDS DESCRIBED HEREIN AND WILL IN NO CIRCUMSTANCES BE SUPPLANTED IN AUTHORITY BY ANY OTHER GRAPHIC OR DIGITAL FORM OF THE PLAT. THERE MAY BE ADDITIONAL RESTRICTIONS THAT ARE NOT RECORDED ON THIS PLAT THAT MAY BE FOUND IN THE PUBLIC RECORDS OF ST. LUCIE COUNTY.

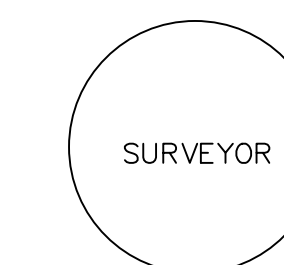
SURVEYOR'S CERTIFICATE:

STATE OF FLORIDA
COUNTY OF ST. LUCIE

THIS IS TO CERTIFY THAT THE PLAT AS SHOWN HEREON IS A TRUE AND CORRECT REPRESENTATION OF A SURVEY MADE UNDER MY RESPONSIBLE DIRECTION AND SUPERVISION AND THAT SAID SURVEY IS ACCURATE TO THE BEST OF MY KNOWLEDGE AND BELIEF AND THAT PERMANENT REFERENCE MONUMENTS (P.R.M.'S) HAVE BEEN SET AND THAT PERMANENT CONTROL POINTS (P.C.P.'S) AND LOT CORNERS WILL BE SET UNDER THE GUARANTEES POSTED WITH THE CITY COUNCIL OF PORT ST. LUCIE FOR THE REQUIRED IMPROVEMENTS, AND FURTHER, THAT THE SURVEY DATA COMPLIES WITH ALL OF THE REQUIREMENTS OF CHAPTER 177, FLORIDA STATUTES, AS AMENDED, AND IN ACCORDANCE WITH THE SURVEYING STANDARDS CONTAINED WITHIN CHAPTER 5J-17, FLORIDA ADMINISTRATIVE CODE, SET FORTH BY THE FLORIDA BOARD OF SURVEYORS AND MAPPERS PURSUANT TO SECTION 472.027, FLORIDA STATUTES, AND ORDINANCES OF THE CITY OF PORT ST. LUCIE, FLORIDA. THIS _____ DAY OF _____ 2021.

DAVID P. LINDLEY
PROFESSIONAL LAND SURVEYOR
FLORIDA REGISTRATION NO. 5005

PREPARED IN THE OFFICE OF:
CAULFIELD & WHEELER, INC.
7900 GLADES ROAD SUITE 100
BOCA RATON, FLORIDA 33434
CERTIFICATION NO. LB 3591



CITY OF PORT ST. LUCIE
PROJECT NO. P21-121
PSLUSD #5308B

THIS INSTRUMENT PREPARED BY
 DAVID P. LINDLEY
 OF
CAULFIELD and WHEELER, INC.
 SURVEYORS - ENGINEERS - PLANNERS
 7900 GLADES ROAD, SUITE 100
 BOCA RATON, FLORIDA 33434 - (561)392-1991
 CERTIFICATE OF AUTHORIZATION NO. LB3591

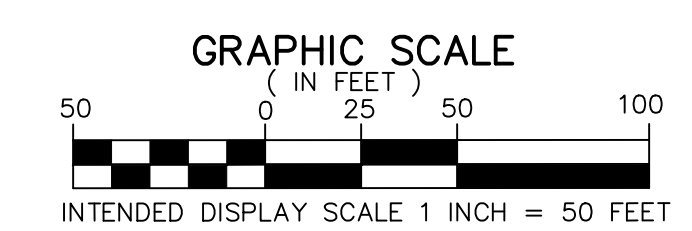
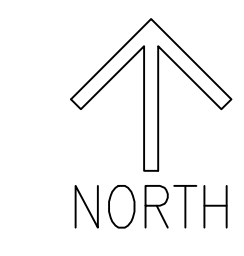
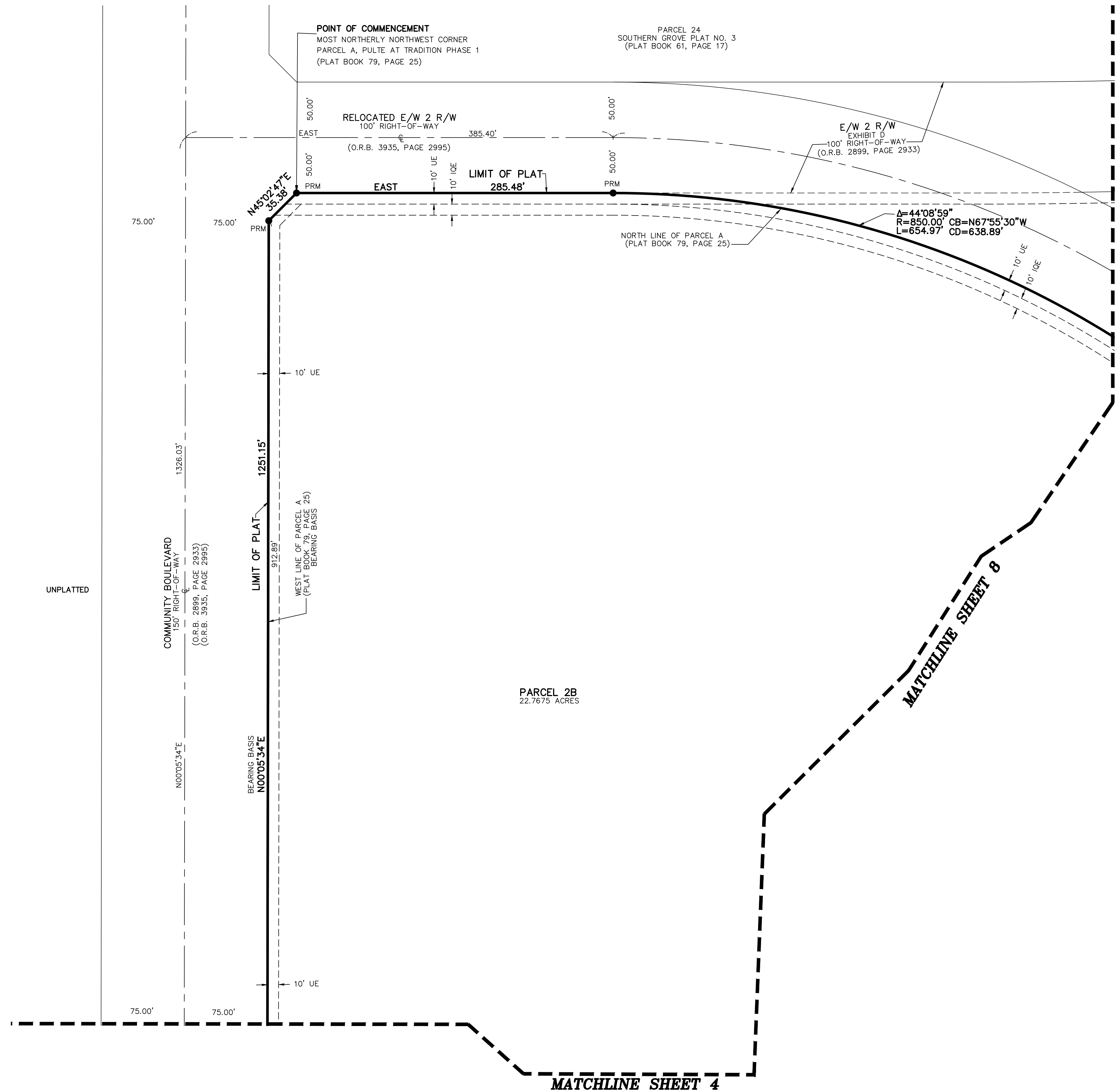
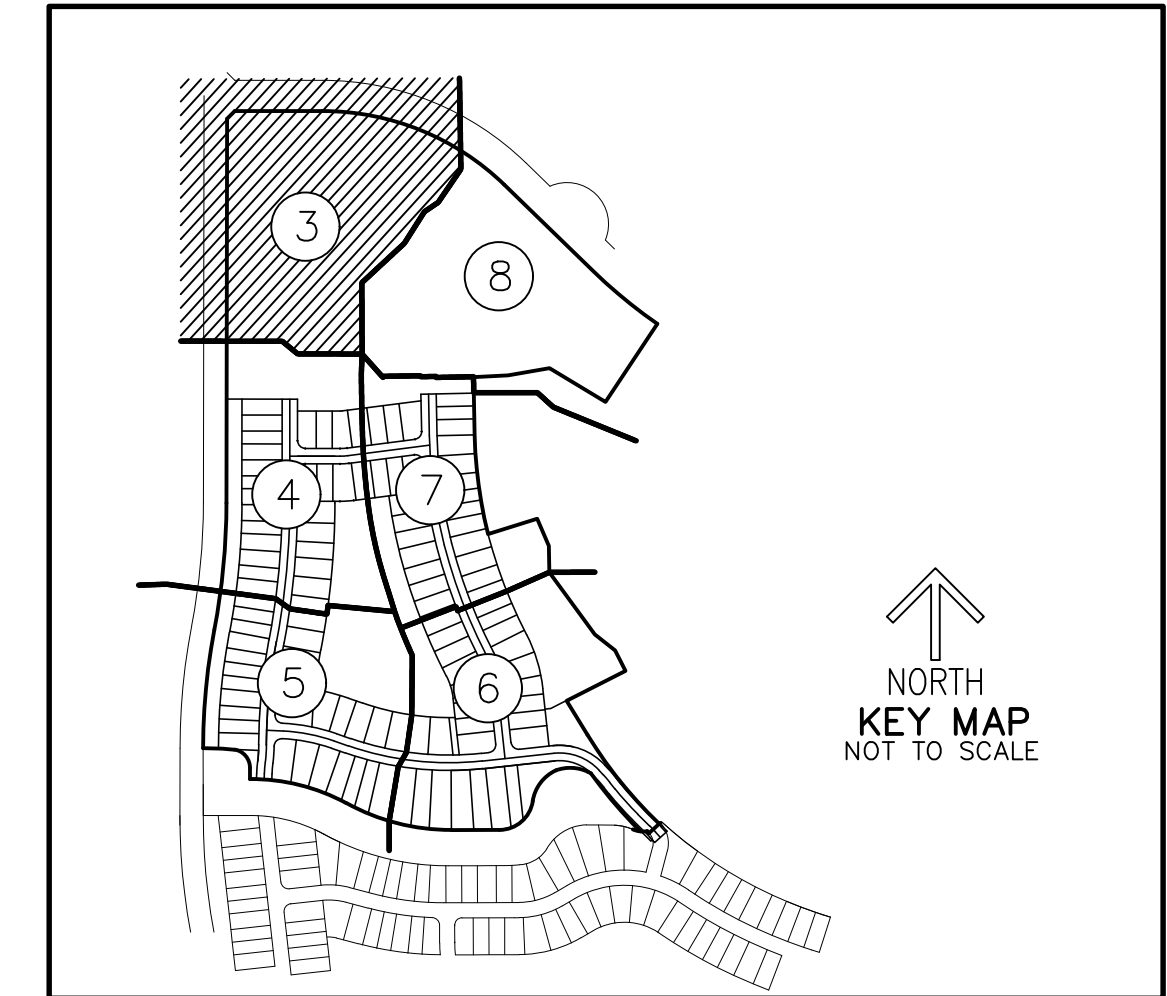
HERON PRESERVE AT TRADITION PHASE 2A

BEING A REPLAT OF PARCEL A, PULTE AT TRADITION PHASE 1, AS RECORDED IN PLAT BOOK 79, PAGE 25 AND A PORTION OF THE E/W 2 R/W (A 100 FOOT RIGHT-OF-WAY), AS RECORDED IN OFFICIAL RECORDS BOOK 3935, PAGE 2995 ALL OF THE PUBLIC RECORDS OF ST. LUCIE COUNTY, FLORIDA, LYING IN SECTION 22, TOWNSHIP 37 SOUTH, RANGE 39 EAST, CITY OF PORT ST. LUCIE, ST. LUCIE COUNTY, FLORIDA.

PLAT BOOK _____

PAGE _____

SHEET 3 OF 8



- LEGEND/ABBREVIATIONS**
- ⊕ - CENTERLINE
 - Δ - DELTA (CENTRAL ANGLE)
 - CB - CHORD BEARING
 - CD - CHORD DISTANCE
 - DE - DRAINAGE EASEMENT
 - EIEE - EMERGENCY INGRESS EGRESS EASEMENT
 - IQE - IRRIGATION EASEMENT
 - L - ARC LENGTH
 - LB - LICENSED BUSINESS
 - LME - LAKE MAINTENANCE EASEMENT
 - LSE - LIFT STATION EASEMENT
 - O.R.B. - OFFICIAL RECORD BOOK
 - PSLUE - PRIVATE UTILITY EASEMENT
 - R - RADIUS
 - (NR) - NON-RADIAL LINE
 - (R) - DIRECTION OF RADIAL LINE
 - UE - PUBLIC UTILITY EASEMENT
 - WLE - WILDLIFE EASEMENT
 - WME/IQE - WATER MANAGEMENT EASEMENT AND IRRIGATION EASEMENT
 - WMAE/IQE - WATER MANAGEMENT ACCESS AND IRRIGATION EASEMENT
 - PRM - PERMANENT REFERENCE MONUMENT
 SET 5/8" IRON ROD WITH CAP
 STAMPED "C&W PRM LB3591"
 - ⊙ - DENOTES PERMANENT CONTROL POINT
 - - DENOTES 4" x 4" CONCRETE MONUMENT

CITY OF PORT ST. LUCIE
 PROJECT NO. P21-121
 PSLUSD #5308B

THIS INSTRUMENT PREPARED BY
 DAVID P. LINDLEY
 OF
CAULFIELD and WHEELER, INC.
 SURVEYORS - ENGINEERS - PLANNERS
 7900 GLADES ROAD, SUITE 100
 BOCA RATON, FLORIDA 33434 - (561)392-1991
 CERTIFICATE OF AUTHORIZATION NO. LB3591

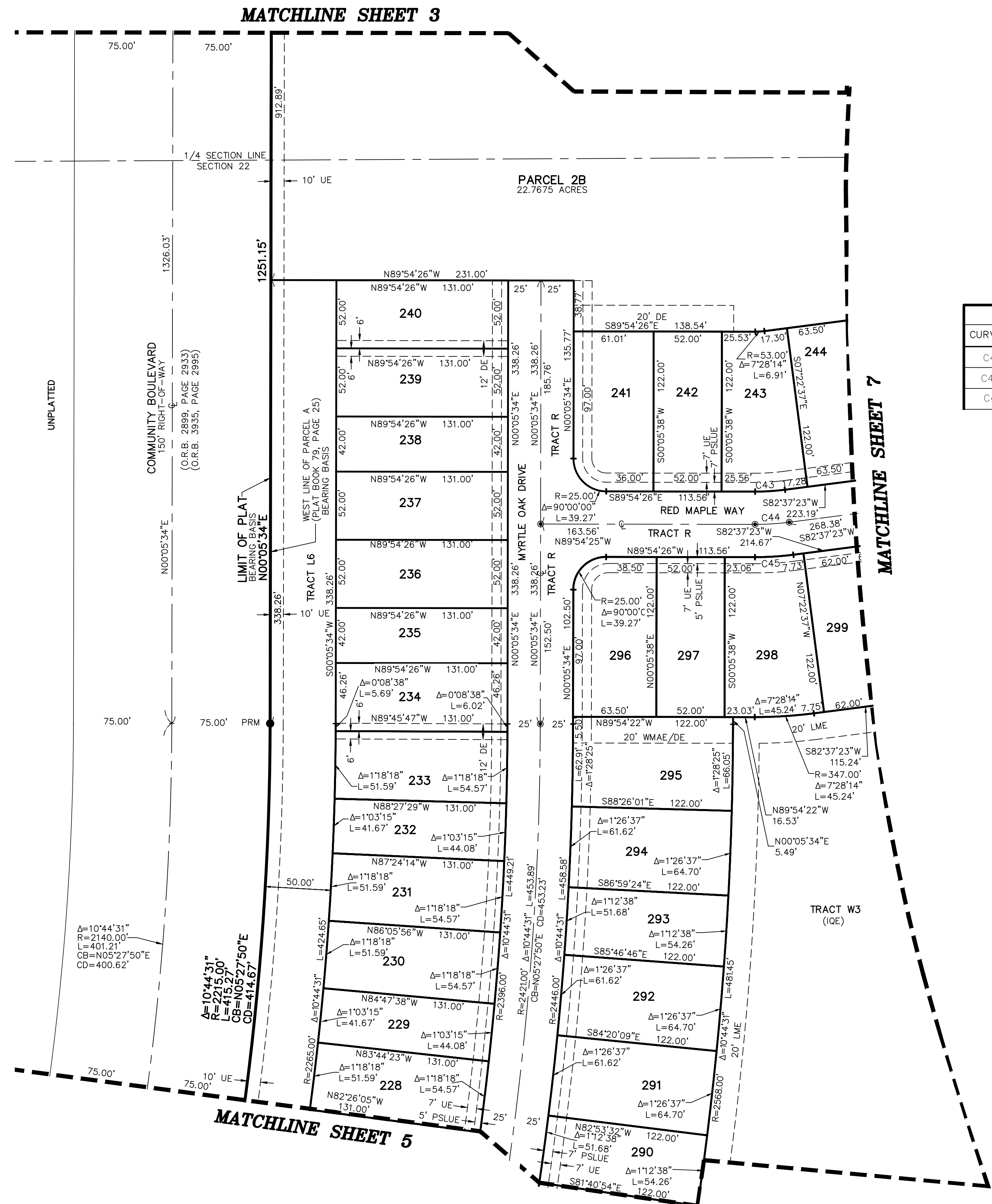
HERON PRESERVE AT TRADITION PHASE 2A

BEING A REPLAT OF PARCEL A, PULTE AT TRADITION PHASE 1, AS RECORDED IN PLAT BOOK 79, PAGE 25 AND A PORTION OF THE E/W 2 R/W (A 100 FOOT RIGHT-OF-WAY), AS RECORDED IN OFFICIAL RECORDS BOOK 3935, PAGE 2995 ALL OF THE PUBLIC RECORDS OF ST. LUCIE COUNTY, FLORIDA, LYING IN SECTION 22, TOWNSHIP 37 SOUTH, RANGE 39 EAST, CITY OF PORT ST. LUCIE, ST. LUCIE COUNTY, FLORIDA.

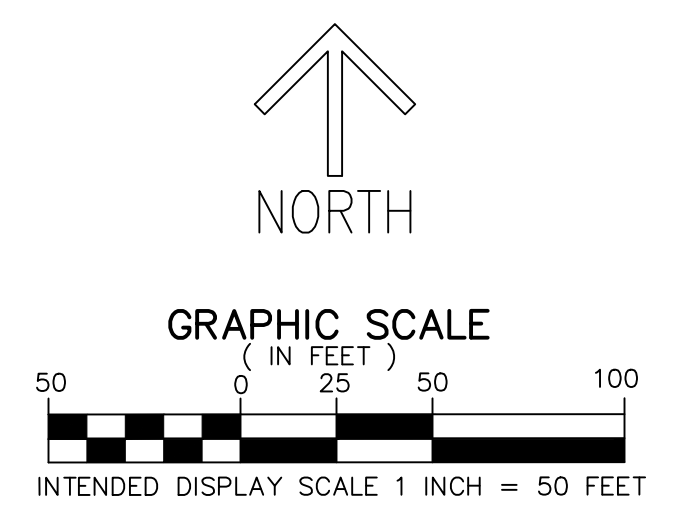
PLAT BOOK _____

PAGE _____

SHEET 4 OF 8



CURVE TABLE					
CURVE #	DELTA	LENGTH	RADIUS	CHORD BEARING	CHORD DISTANCE
C45	007°28'11"	29.33	225.00		
C44	007°28'11"	26.07	200.00	N86°21'29"E	26.06
C43	007°28'11"	22.81	175.00		



- LEGEND/ABBREVIATIONS**
- ⊙ - CENTERLINE
 - Δ - DELTA (CENTRAL ANGLE)
 - CB - CHORD BEARING
 - CD - CHORD DISTANCE
 - DE - DRAINAGE EASEMENT
 - EIEE - EMERGENCY INGRESS EGRESS EASEMENT
 - IQE - IRRIGATION EASEMENT
 - L - ARC LENGTH
 - LB - LICENSED BUSINESS
 - LME - LAKE MAINTENANCE EASEMENT
 - LSE - LIFT STATION EASEMENT
 - O.R.B. - OFFICIAL RECORD BOOK
 - PSLUE - PRIVATE UTILITY EASEMENT
 - R - RADIUS
 - (NR) - NON-RADIAL LINE
 - (R) - DIRECTION OF RADIAL LINE
 - UE - PUBLIC UTILITY EASEMENT
 - WLE - WILDLIFE EASEMENT
 - WME/IQE - WATER MANAGEMENT EASEMENT AND IRRIGATION EASEMENT
 - WMAE/IQE - WATER MANAGEMENT ACCESS AND IRRIGATION EASEMENT
 - PRM - PERMANENT REFERENCE MONUMENT SET 5/8" IRON ROD WITH CAP STAMPED "C&W PRM LB3591"
 - ⊙ - DENOTES PERMANENT CONTROL POINT
 - - DENOTES 4"x 4" CONCRETE MONUMENT

CITY OF PORT ST. LUCIE
 PROJECT NO. P21-121
 PLSUSD #5308B

THIS INSTRUMENT PREPARED BY
 DAVID P. LINDLEY
 OF
CAULFIELD and WHEELER, INC.
 SURVEYORS - ENGINEERS - PLANNERS
 7900 GLADES ROAD, SUITE 100
 BOCA RATON, FLORIDA 33434 - (561)392-1991
 CERTIFICATE OF AUTHORIZATION NO. LB3591

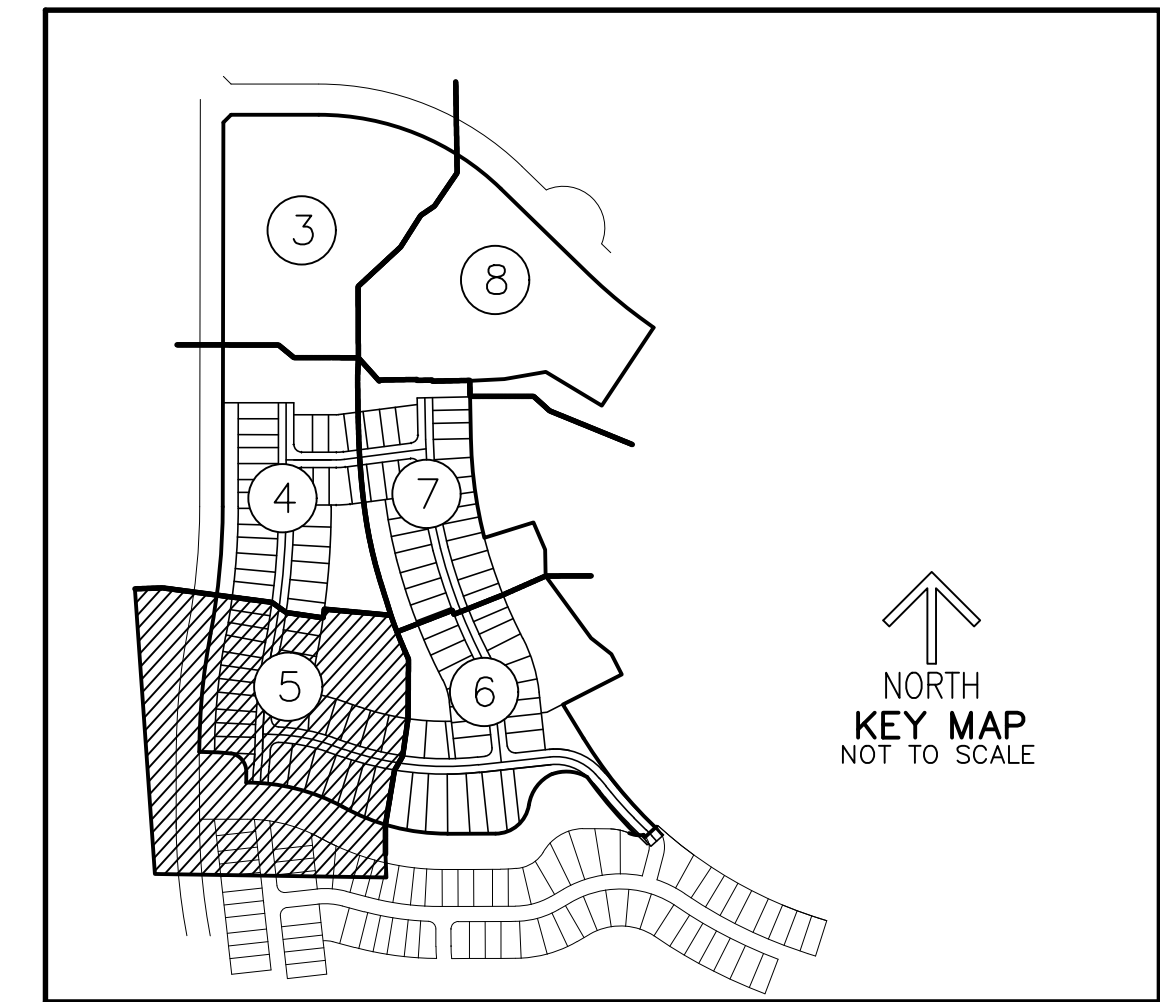
HERON PRESERVE AT TRADITION PHASE 2A

BEING A REPLAT OF PARCEL A, PULTE AT TRADITION PHASE 1, AS RECORDED IN PLAT BOOK 79, PAGE 25 AND A PORTION OF THE E/W 2 R/W (A 100 FOOT RIGHT-OF-WAY), AS RECORDED IN OFFICIAL RECORDS BOOK 3935, PAGE 2995 ALL OF THE PUBLIC RECORDS OF ST. LUCIE COUNTY, FLORIDA, LYING IN SECTION 22, TOWNSHIP 37 SOUTH, RANGE 39 EAST, CITY OF PORT ST. LUCIE, ST. LUCIE COUNTY, FLORIDA.

PLAT BOOK _____

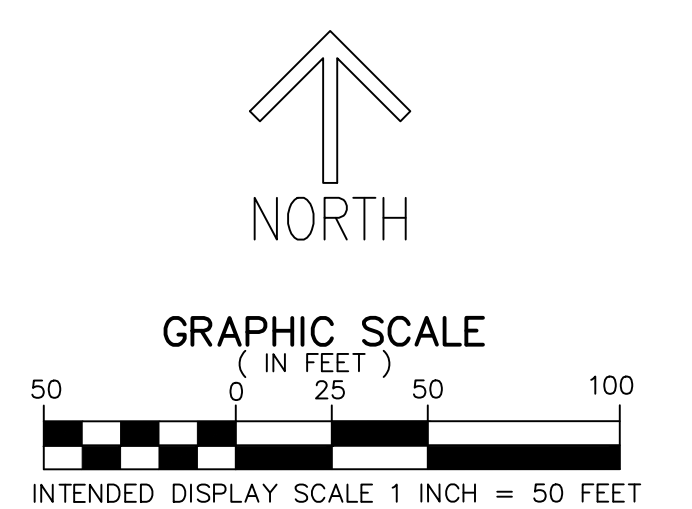
PAGE _____

SHEET 5 OF 8



NORTH
 KEY MAP
 NOT TO SCALE

CURVE TABLE					
CURVE #	DELTA	LENGTH	RADIUS	CHORD BEARING	CHORD DISTANCE
C45	007°28'11"	29.33	225.00		
C44	007°28'11"	26.07	200.00	N86°21'29"E	26.06
C43	007°28'11"	22.81	175.00		
C42	004°14'21"	35.15	475.00	N04°40'39"E	35.14
C41	002°12'25"	25.05	650.20	N85°10'40"W	25.04
C40	002°12'13"	25.01	650.20	N87°22'59"W	25.00
C39	001°52'12"	21.22	650.20	N89°25'11"W	21.22
C19	008°58'12"	291.04	1859.00	S06°20'59"W	290.74
C18	001°28'54"	48.07	1859.00	S01°07'26"W	48.07
C11	006°24'51"	53.17	475.00	N03°35'25"E	53.15
C10	004°18'26"	39.47	525.00	S04°38'37"W	39.46
C9	000°59'36"	17.84	1029.00	S01°59'36"W	17.84
C3	006°24'51"	55.97	500.00	N03°35'25"E	55.94
C2	004°18'26"	37.59	500.00	S04°38'37"W	37.58
C1	001°01'16"	17.89	1004.00	S01°58'46"W	17.89



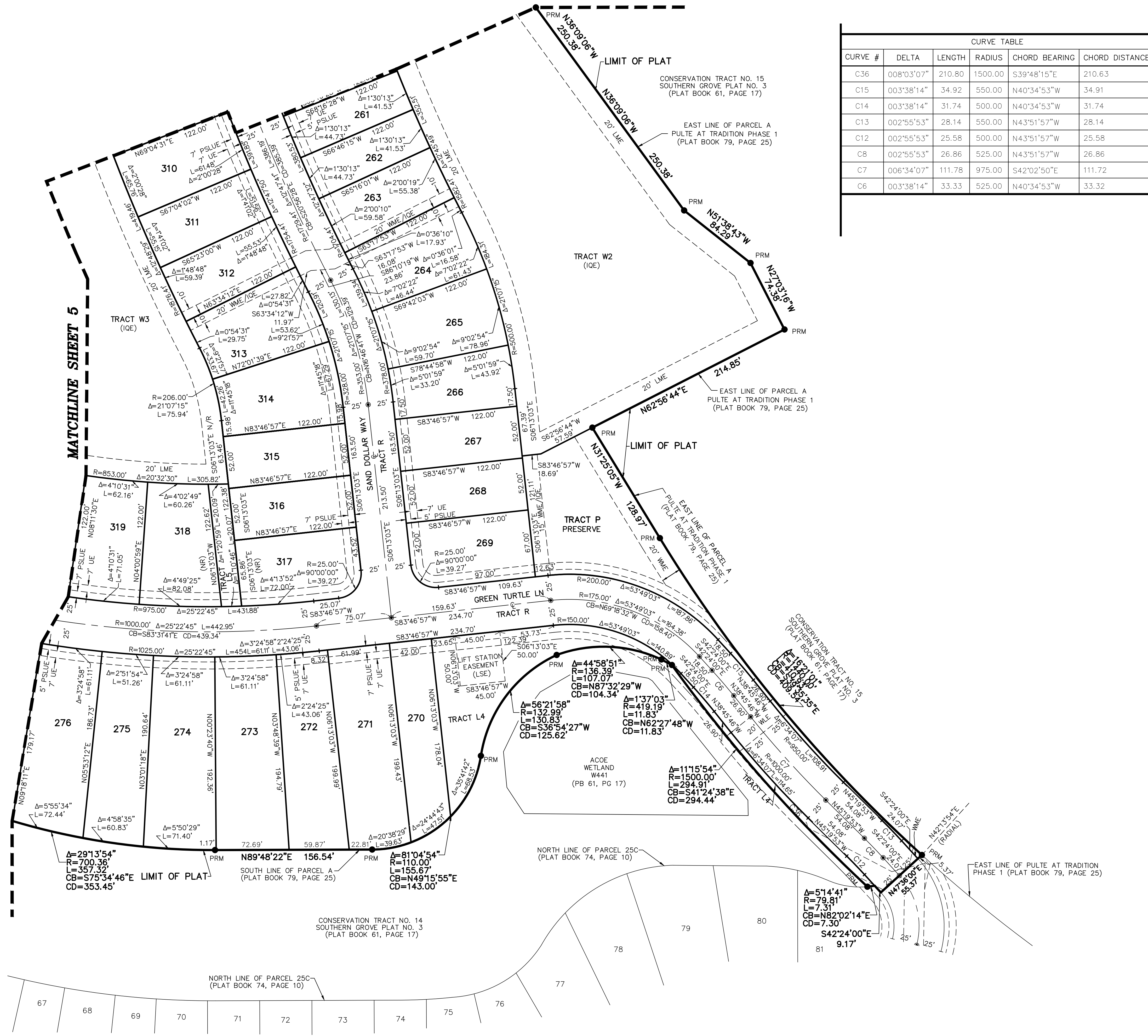
- LEGEND/ABBREVIATIONS**
- ⊙ - CENTERLINE
 - Δ - DELTA (CENTRAL ANGLE)
 - CB - CHORD BEARING
 - CD - CHORD DISTANCE
 - DE - DRAINAGE EASEMENT
 - EIEE - EMERGENCY INGRESS EGRESS EASEMENT
 - IE - IRRIGATION EASEMENT
 - ARC LENGTH
 - LB - LICENSED BUSINESS
 - LME - LAKE MAINTENANCE EASEMENT
 - LSE - LIFT STATION EASEMENT
 - O.R.B. - OFFICIAL RECORD BOOK
 - PSLUE - PRIVATE UTILITY EASEMENT
 - R - RADIUS
 - (NR) - NON-RADIAL LINE
 - (R) - DIRECTION OF RADIAL LINE
 - UE - PUBLIC UTILITY EASEMENT
 - WLE - WILDLIFE EASEMENT
 - WME/IGE - WATER MANAGEMENT EASEMENT AND IRRIGATION EASEMENT
 - WMAE/IOE - WATER MANAGEMENT ACCESS AND IRRIGATION EASEMENT
 - PRM - PERMANENT REFERENCE MONUMENT SET 5/8" IRON ROD WITH CAP STAMPED "C&W PRM LB3591"
 - ⊙ - DENOTES PERMANENT CONTROL POINT
 - - DENOTES 4" x 4" CONCRETE MONUMENT

CITY OF PORT ST. LUCIE
 PROJECT NO. P21-121
 PSLUSD #5308B

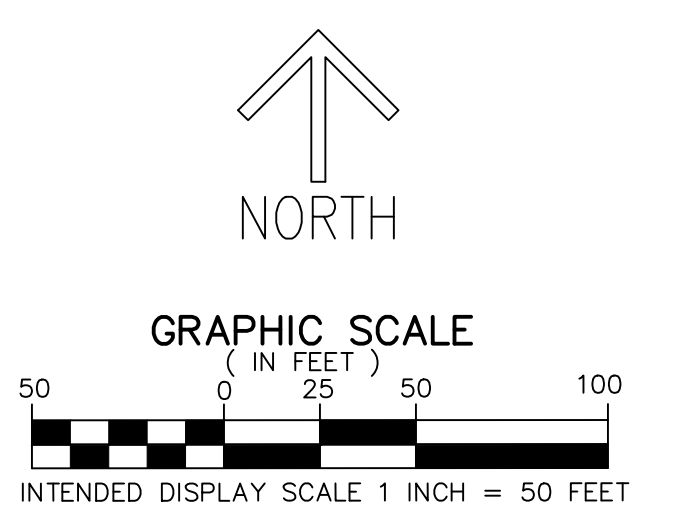
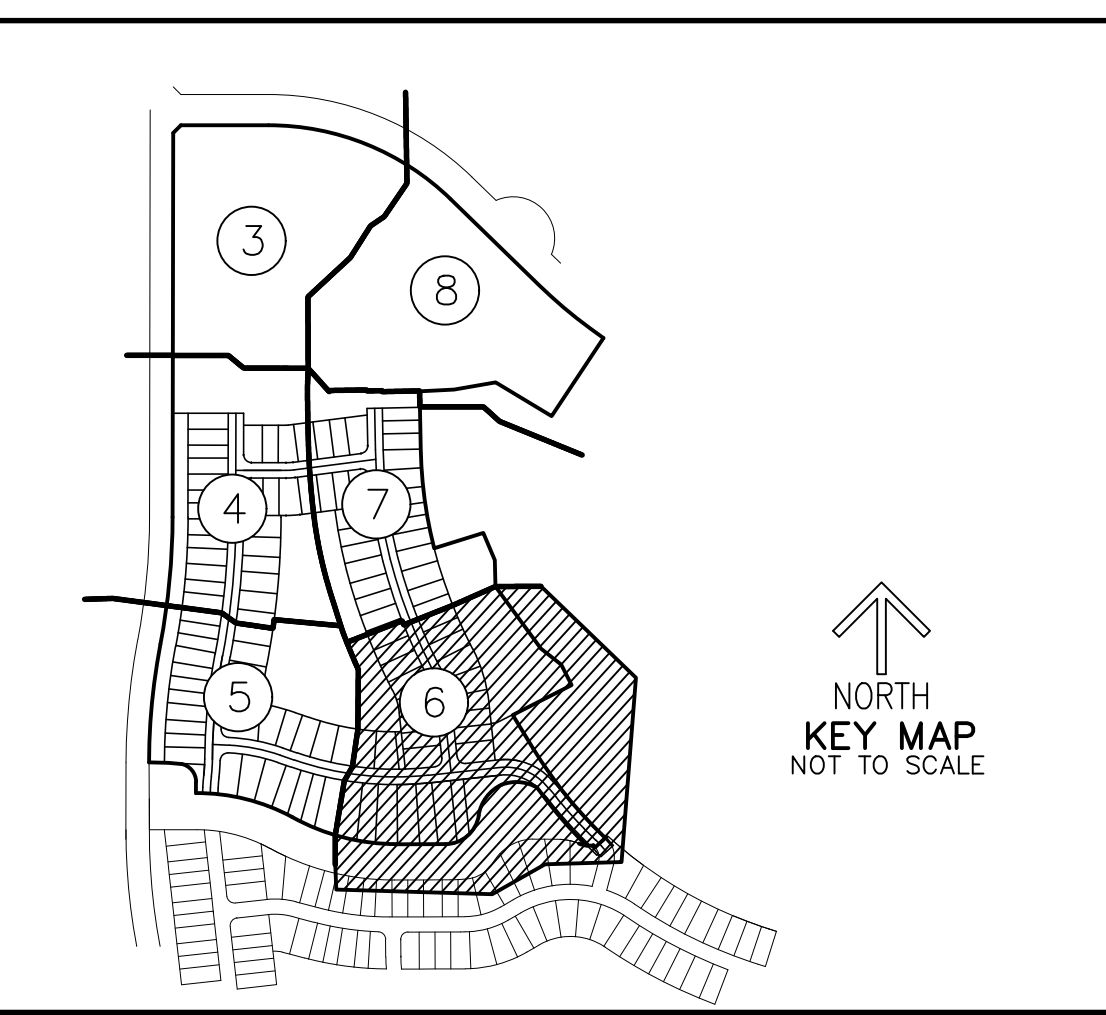
HERON PRESERVE AT TRADITION PHASE 2A

BEING A REPLAT OF PARCEL A, PULTE AT TRADITION PHASE 1, AS RECORDED IN PLAT BOOK 79, PAGE 25 AND A PORTION OF THE E/W 2 R/W (A 100 FOOT RIGHT-OF-WAY), AS RECORDED IN OFFICIAL RECORDS BOOK 3935, PAGE 2995 ALL OF THE PUBLIC RECORDS OF ST. LUCIE COUNTY, FLORIDA, LYING IN SECTION 22, TOWNSHIP 37 SOUTH, RANGE 39 EAST, CITY OF PORT ST. LUCIE, ST. LUCIE COUNTY, FLORIDA.

MATCHLINE SHEET 7



CURVE TABLE					
CURVE #	DELTA	LENGTH	RADIUS	CHORD BEARING	CHORD DISTANCE
C36	008°03'07"	210.80	1500.00	S39°48'15"E	210.63
C15	003°38'14"	34.92	550.00	N40°34'53"W	34.91
C14	003°38'14"	31.74	500.00	N40°34'53"W	31.74
C13	002°55'53"	28.14	550.00	N43°51'57"W	28.14
C12	002°55'53"	25.58	500.00	N43°51'57"W	25.58
C8	002°55'53"	26.86	525.00	N43°51'57"W	26.86
C7	006°34'07"	111.78	975.00	S42°02'50"E	111.72
C6	003°38'14"	33.33	525.00	N40°34'53"W	33.32



- LEGEND / ABBREVIATIONS**
- CL - CENTERLINE
 - Δ - DELTA (CENTRAL ANGLE)
 - CB - CHORD BEARING
 - CD - CHORD DISTANCE
 - DE - DRAINAGE EASEMENT
 - EIEE - EMERGENCY INGRESS EGRESS EASEMENT
 - ICE - IRRIGATION EASEMENT
 - L - ARC LENGTH
 - LB - LICENSED BUSINESS
 - LME - LAKE MAINTENANCE EASEMENT
 - LSE - LIFT STATION EASEMENT
 - O.R.B. - OFFICIAL RECORD BOOK
 - PSLUE - PRIVATE UTILITY EASEMENT
 - R - RADIUS
 - (NR) - NON-RADIAL LINE
 - (R) - DIRECTION OF RADIAL LINE
 - UE - PUBLIC UTILITY EASEMENT
 - WLE - WILDLIFE EASEMENT
 - WME/IOE - WATER MANAGEMENT EASEMENT AND IRRIGATION EASEMENT
 - WMAE/IOE - WATER MANAGEMENT EASEMENT AND IRRIGATION EASEMENT
 - - PERMANENT REFERENCE MONUMENT SET 5/8" IRON ROD WITH CAP STAMPED "C&W PRM LB3591"
 - - DENOTES PERMANENT CONTROL POINT
 - - DENOTES 4"x 4" CONCRETE MONUMENT

THIS INSTRUMENT PREPARED BY
 DAVID P. LINDLEY
 OF
CAULFIELD and WHEELER, INC.
 SURVEYORS - ENGINEERS - PLANNERS
 7900 GLADES ROAD, SUITE 100
 BOCA RATON, FLORIDA 33434 - (561)392-1991
 CERTIFICATE OF AUTHORIZATION NO. LB3591

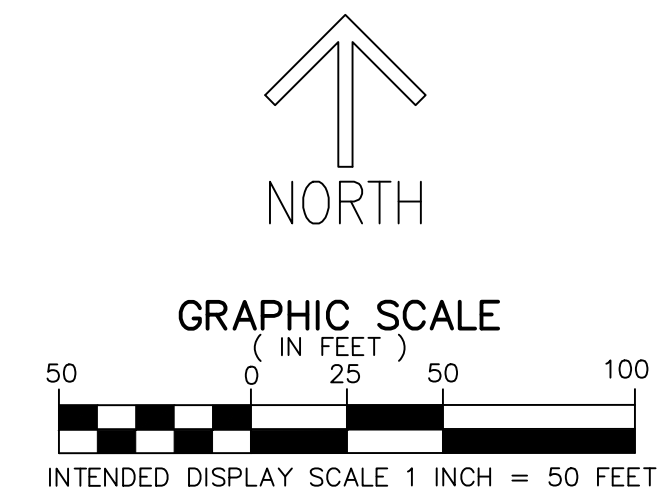
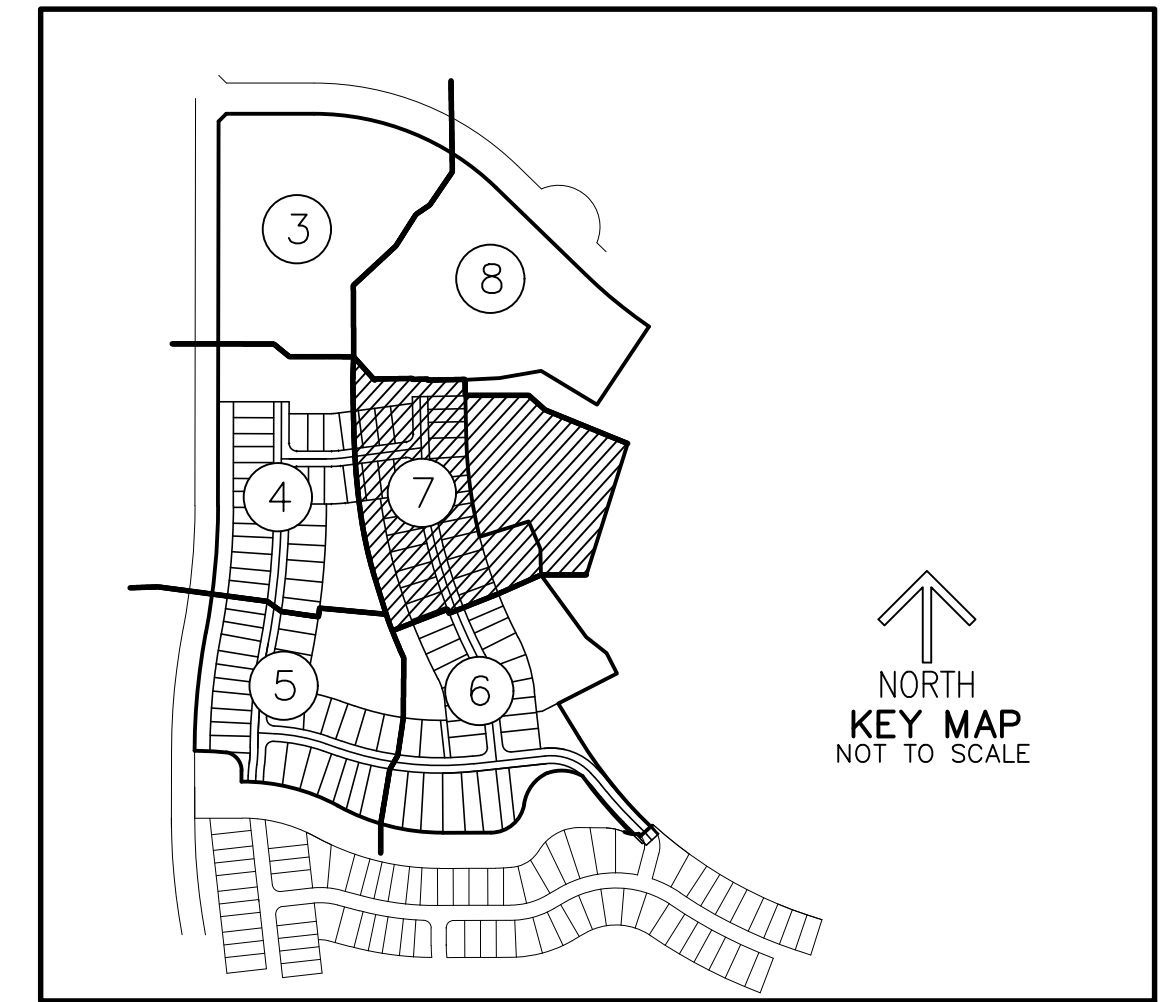
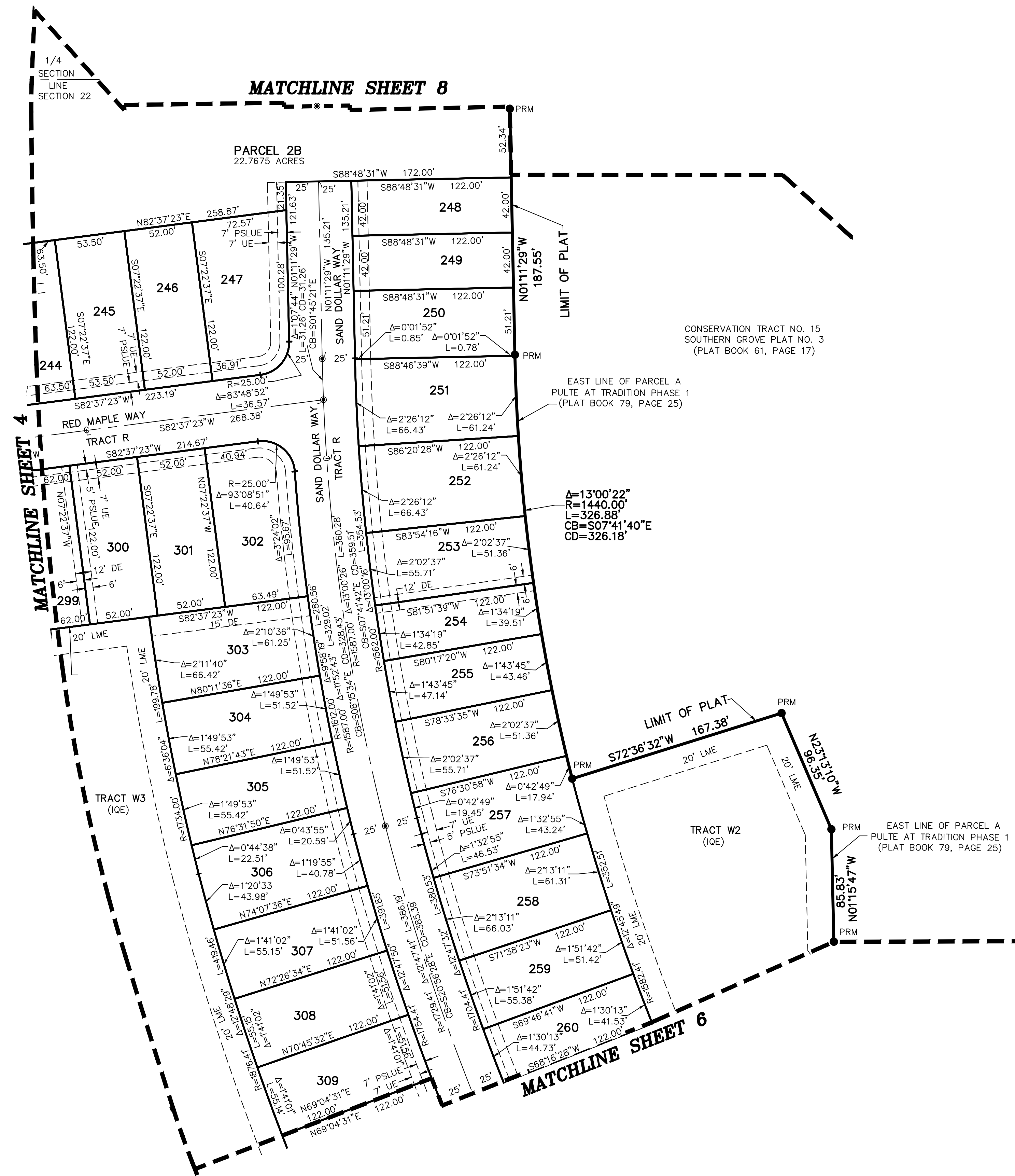
HERON PRESERVE AT TRADITION PHASE 2A

BEING A REPLAT OF PARCEL A, PULTE AT TRADITION PHASE 1, AS RECORDED IN PLAT BOOK 79, PAGE 25 AND A PORTION OF THE E/W 2 R/W (A 100 FOOT RIGHT-OF-WAY), AS RECORDED IN OFFICIAL RECORDS BOOK 3935, PAGE 2995 ALL OF THE PUBLIC RECORDS OF ST. LUCIE COUNTY, FLORIDA, LYING IN SECTION 22, TOWNSHIP 37 SOUTH, RANGE 39 EAST, CITY OF PORT ST. LUCIE, ST. LUCIE COUNTY, FLORIDA.

PLAT BOOK _____

PAGE _____

SHEET 7 OF 8



- LEGEND/ABBREVIATIONS**
- CL - CENTERLINE
 - Δ - DELTA (CENTRAL ANGLE)
 - CB - CHORD BEARING
 - CD - CHORD DISTANCE
 - DE - DRAINAGE EASEMENT
 - EIEE - EMERGENCY INGRESS EGRESS EASEMENT
 - IQE - IRRIGATION EASEMENT
 - L - ARC LENGTH
 - LB - LICENSED BUSINESS
 - LME - LAKE MAINTENANCE EASEMENT
 - LSE - LIFT STATION EASEMENT
 - O.R.B. - OFFICIAL RECORD BOOK
 - PSLUE - PRIVATE UTILITY EASEMENT
 - R - RADIUS
 - (NR) - NON-RADIAL LINE
 - (R) - DIRECTION OF RADIAL LINE
 - UE - PUBLIC UTILITY EASEMENT
 - WLE - WILDLIFE EASEMENT
 - WME/IQE - WATER MANAGEMENT EASEMENT AND IRRIGATION EASEMENT
 - WMAE/IQE - WATER MANAGEMENT ACCESS AND IRRIGATION EASEMENT
 - PRM - PERMANENT REFERENCE MONUMENT SET 5/8" IRON ROD WITH CAP STAMPED "C&W PRM LB3591"
 - - DENOTES PERMANENT CONTROL POINT
 - - DENOTES 4"x 4" CONCRETE MONUMENT

CITY OF PORT ST. LUCIE
 PROJECT NO. P21-121
 PLSUSD #5308B

THIS INSTRUMENT PREPARED BY
 DAVID P. LINDLEY
 OF
CAULFIELD and WHEELER, INC.
 SURVEYORS - ENGINEERS - PLANNERS
 7900 GLADES ROAD, SUITE 100
 BOCA RATON, FLORIDA 33434 - (561)392-1991
 CERTIFICATE OF AUTHORIZATION NO. LB3591

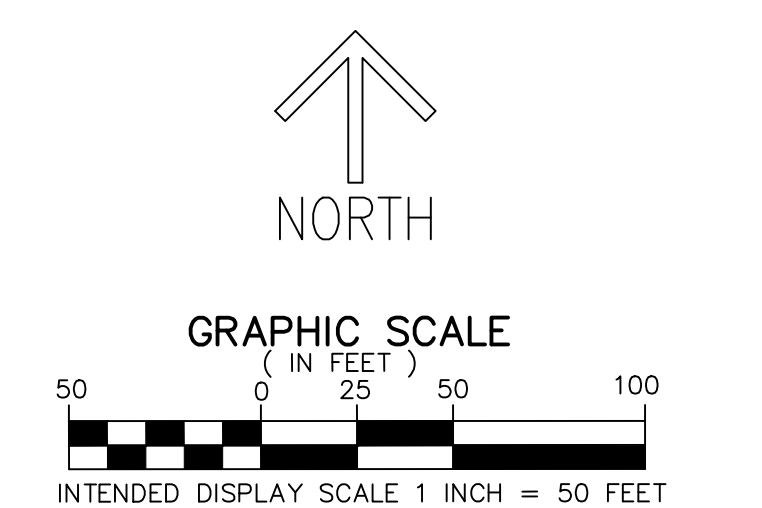
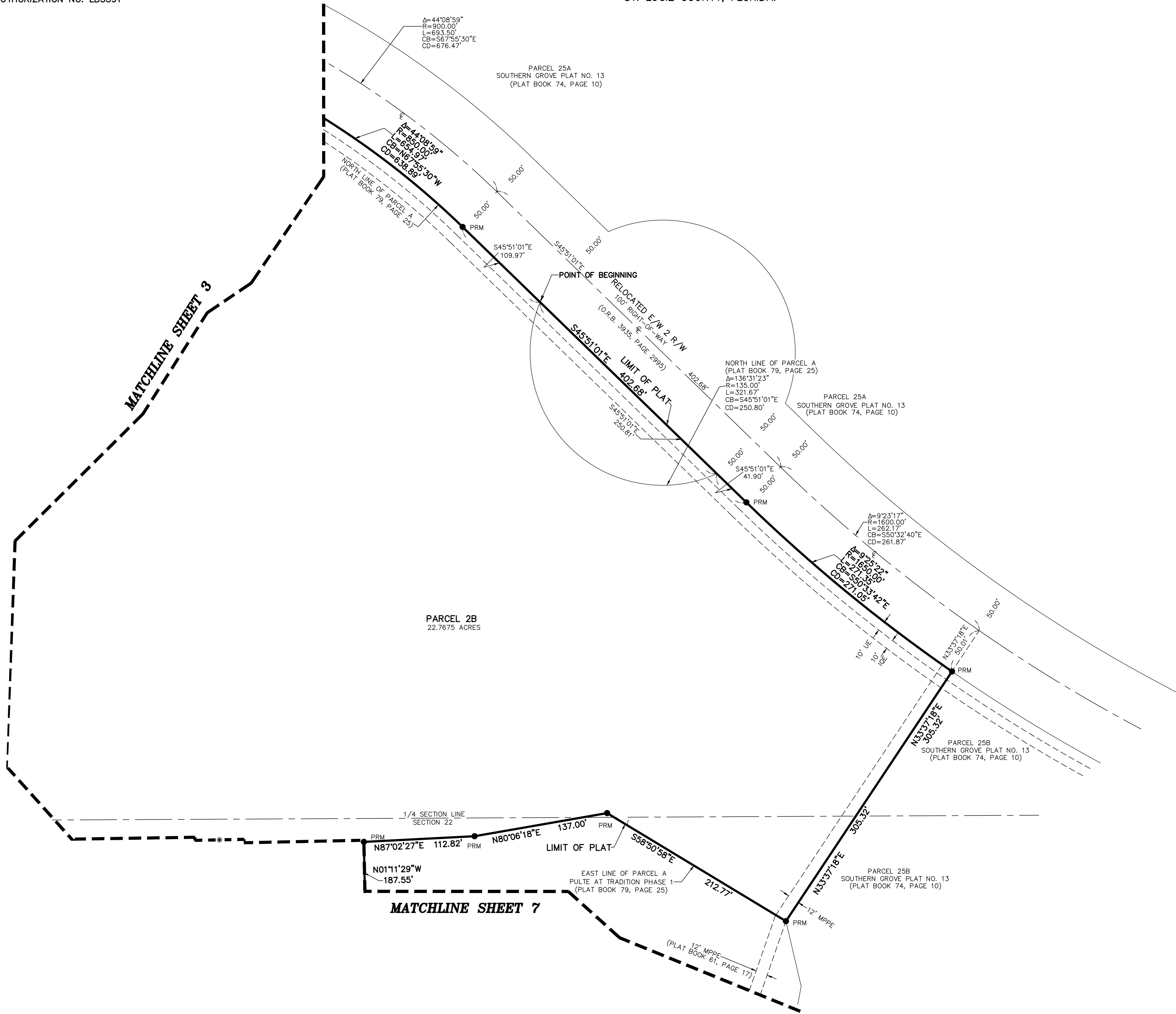
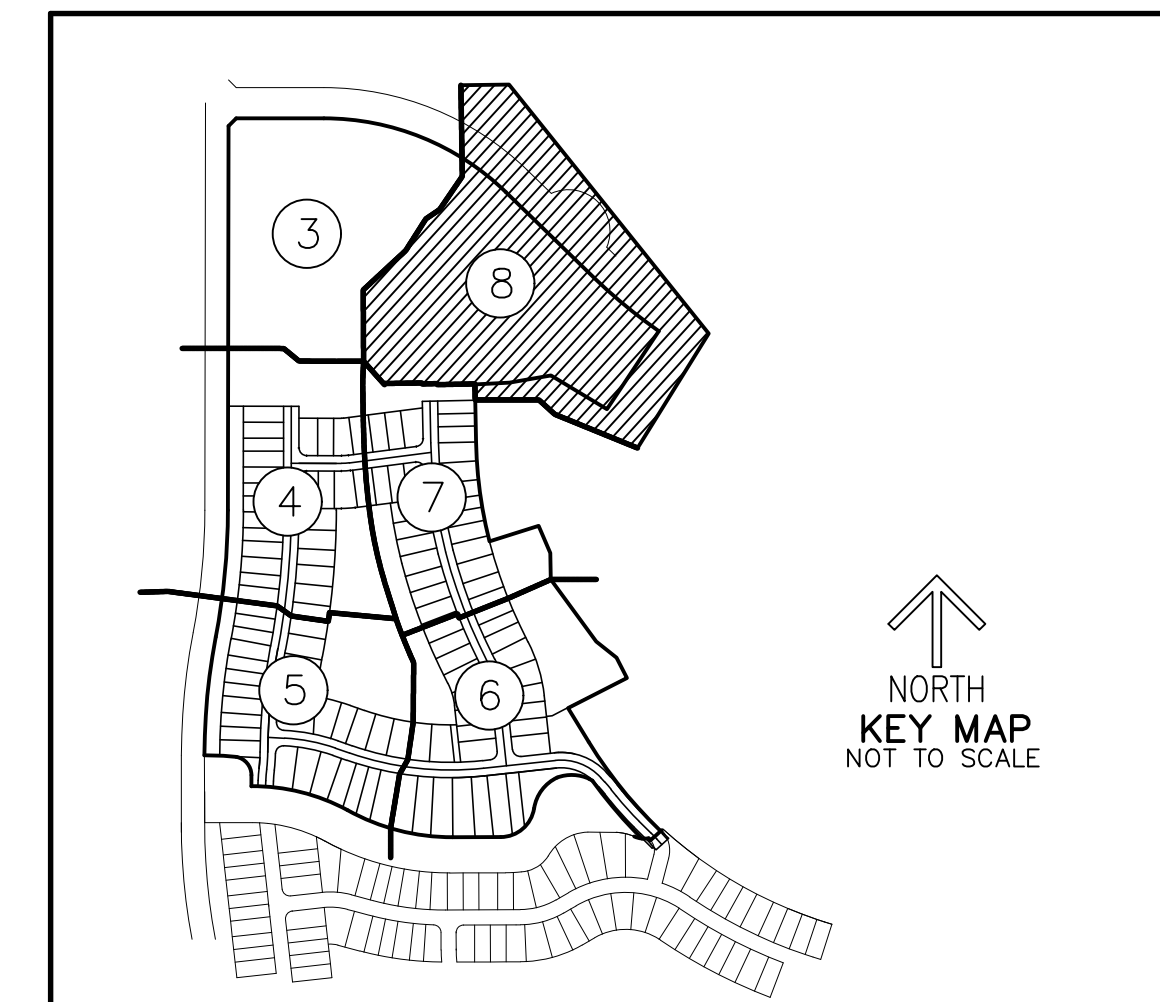
HERON PRESERVE AT TRADITION PHASE 2A

BEING A REPLAT OF PARCEL A, PULTE AT TRADITION PHASE 1, AS RECORDED IN PLAT BOOK 79, PAGE 25 AND A PORTION OF THE E/W 2 R/W (A 100 FOOT RIGHT-OF-WAY), AS RECORDED IN OFFICIAL RECORDS BOOK 3935, PAGE 2995 ALL OF THE PUBLIC RECORDS OF ST. LUCIE COUNTY, FLORIDA, LYING IN SECTION 22, TOWNSHIP 37 SOUTH, RANGE 39 EAST, CITY OF PORT ST. LUCIE, ST. LUCIE COUNTY, FLORIDA.

PLAT BOOK _____

PAGE _____

SHEET 8 OF 8



- LEGEND/ABBREVIATIONS**
- CL - CENTERLINE
 - Δ - DELTA (CENTRAL ANGLE)
 - CB - CHORD BEARING
 - CD - CHORD DISTANCE
 - DE - DRAINAGE EASEMENT
 - EIEE - EMERGENCY INGRESS EGRESS EASEMENT
 - IOE - IRRIGATION EASEMENT
 - L - ARC LENGTH
 - LB - LICENSED BUSINESS
 - LME - LAKE MAINTENANCE EASEMENT
 - LSE - LIFT STATION EASEMENT
 - O.R.B. - OFFICIAL RECORD BOOK
 - PSLUE - PRIVATE UTILITY EASEMENT
 - R - RADIUS
 - (NR) - NON-RADIAL LINE
 - (R) - DIRECTION OF RADIAL LINE
 - UE - PUBLIC UTILITY EASEMENT
 - WLE - WILDLIFE EASEMENT
 - WME/IOE - WATER MANAGEMENT EASEMENT AND IRRIGATION EASEMENT
 - WMAE/IOE - WATER MANAGEMENT ACCESS AND IRRIGATION EASEMENT
 - - PERMANENT REFERENCE MONUMENT SET 5/8" IRON ROD WITH CAP STAMPED "C&W PRM LB3591"
 - ⊙ - DENOTES PERMANENT CONTROL POINT
 - - DENOTES 4" x 4" CONCRETE MONUMENT

CITY OF PORT ST. LUCIE
 PROJECT NO. P21-121
 PSLUSD #5308B