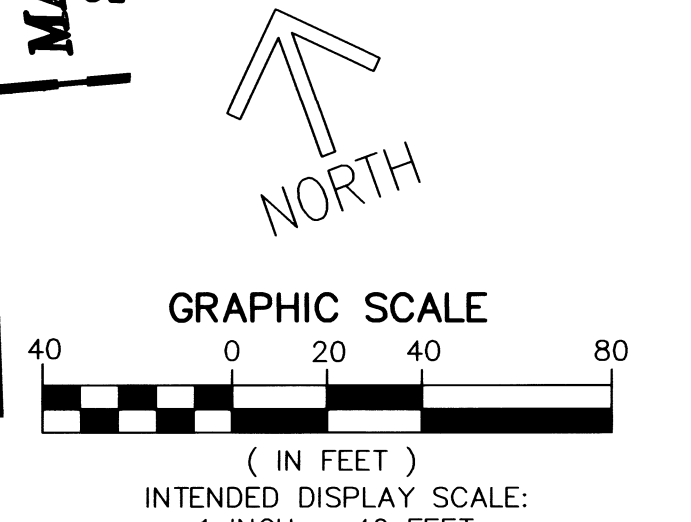
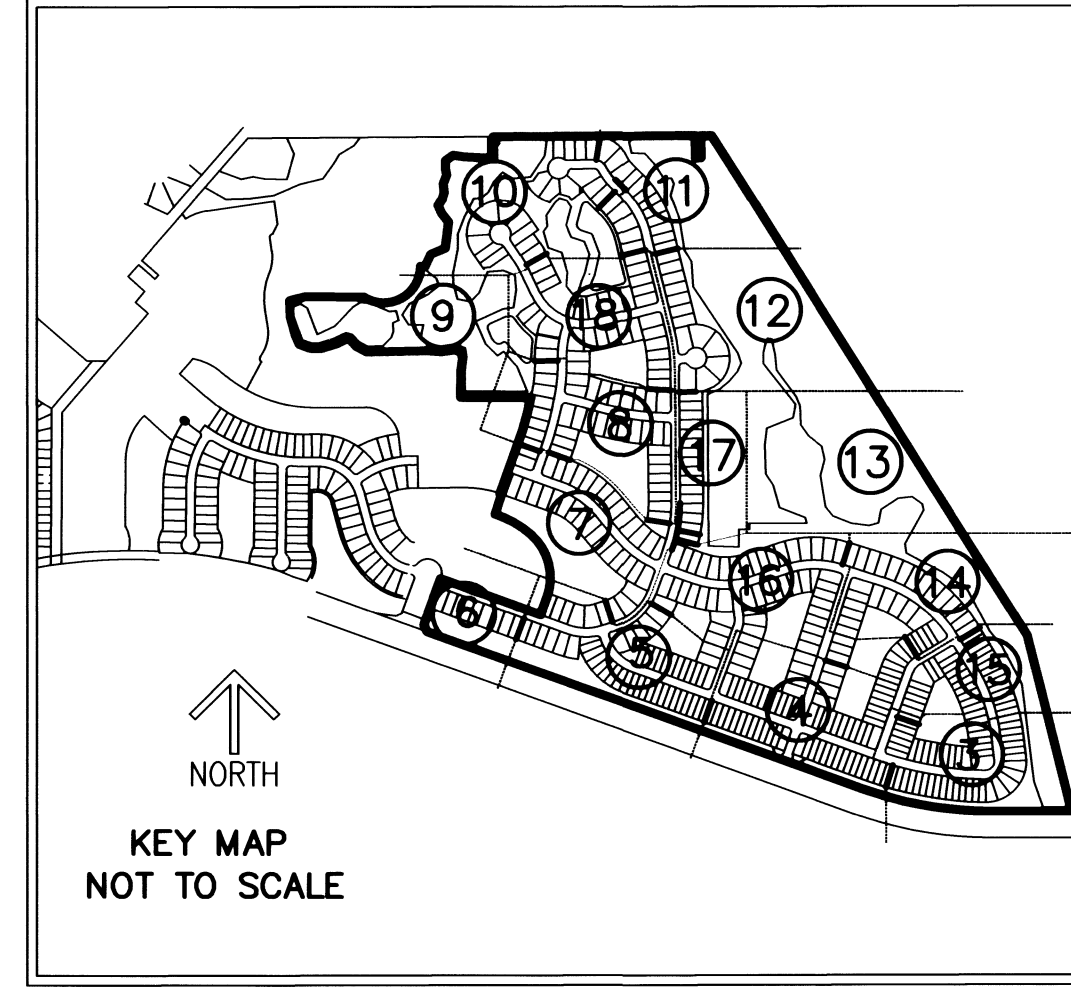
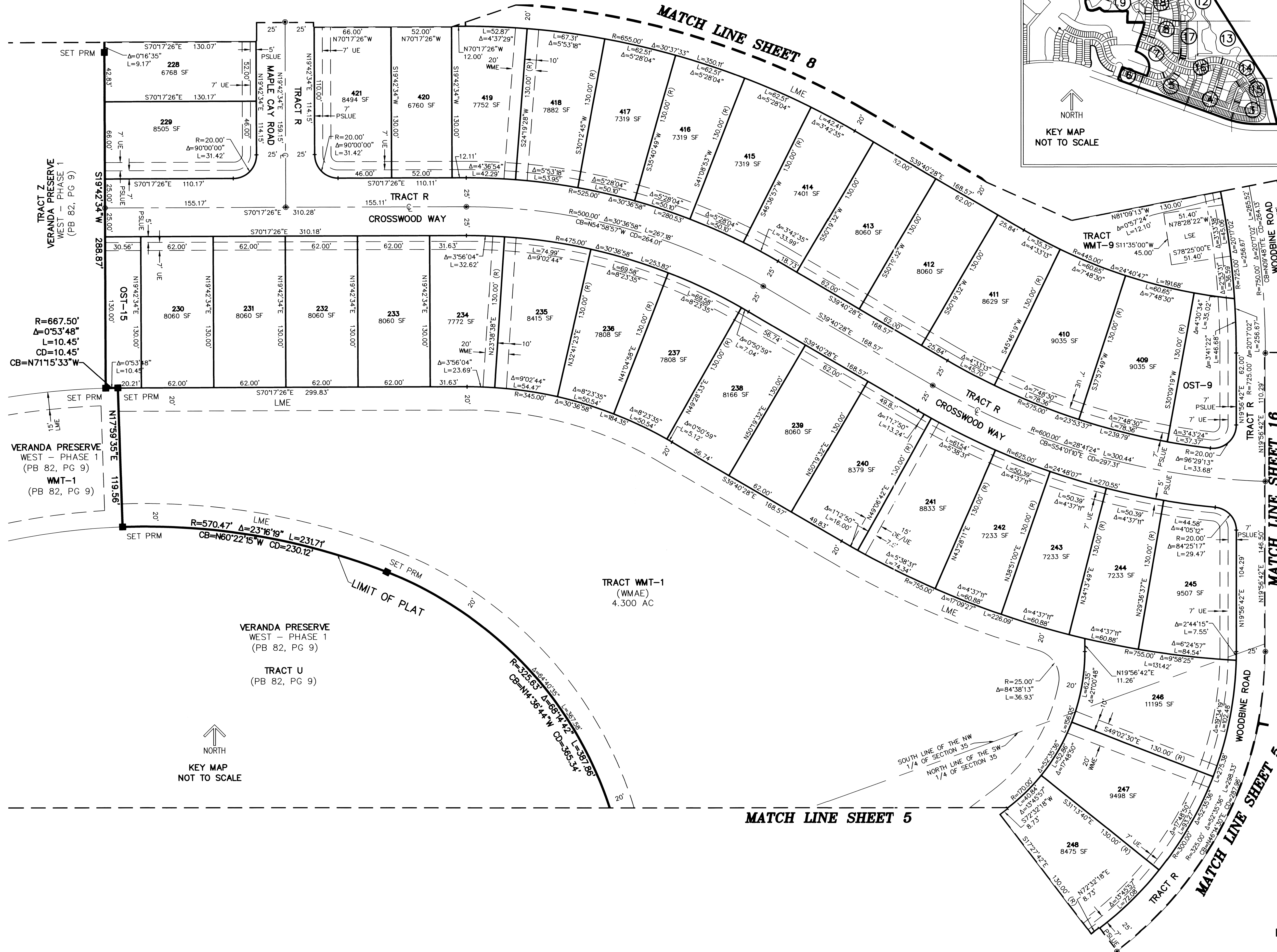


THIS INSTRUMENT PREPARED BY
 RONNIE L. FURNISS
 OF
CAULFIELD and WHEELER, INC.
 SURVEYORS - ENGINEERS - PLANNERS
 7900 GLADES ROAD, SUITE 100
 BOCA RATON, FLORIDA 33434 - (561)392-1991
 CERTIFICATE OF AUTHORIZATION NO. LB3591

VERANDA PRESERVE EAST

BEING A REPLAT OF A PORTION OF TRACT Z OF THE PLAT OF VERANDA PRESERVE WEST - PHASE 1,
 AS RECORDED IN PLAT BOOK 82, PAGE 9, LYING IN SECTIONS 34 AND 35, TOWNSHIP 37 SOUTH,
 RANGE 40 EAST, CITY OF PORT ST. LUCIE, ST. LUCIE COUNTY, FLORIDA.

PLAT BOOK 114
 PAGE 7
SHEET 7 OF 18



- LEGEND/ABBREVIATIONS**
- ⊕ - CENTERLINE
 - Δ - DELTA (CENTRAL ANGLE)
 - AC - ACRES
 - CB - CHORD BEARING
 - CBE - CONSERVATION BUFFER EASEMENT
 - CD - CHORD DISTANCE
 - DE - DRAINAGE EASEMENT
 - EIEE - EMERGENCY INGRESS AND EGRESS EASEMENT
 - FND - FOUND
 - FE - FENCE EASEMENT
 - ARC - ARC LENGTH
 - LB - LICENSED BUSINESS
 - LBE - LANDSCAPE BUFFER EASEMENT
 - LME - LAKE MAINTENANCE EASEMENT
 - LMAE - LAKE MAINTENANCE ACCESS EASEMENT
 - LSE - LIFT STATION EASEMENT
 - WME - WATER MANAGEMENT EASEMENT
 - MEB - MAINTENANCE EASEMENT BUFFER
 - ORB - OFFICIAL RECORD BOOK
 - PB - PLAT BOOK
 - PDE - PRIVATE DRAINAGE EASEMENT
 - PG - PAGE
 - PUE - PUBLIC UTILITY EASEMENT
 - PSLUE - DENOTES PRIVATE UTILITY EASEMENT
 - R - RADIUS
 - (R) - INDICATES RADIAL LINE
 - SF - SQUARE FEET
 - UE - UTILITY EASEMENT
 - WMAE - WATER MANAGEMENT ACCESS EASEMENT
 - PRM - DENOTES PERMANENT REFERENCE MONUMENT
 - 5/8" IRON ROD WITH CAP STAMPED "C&W PRM LB 3591"
 - - DENOTES PERMANENT CONTROL POINT

PSLUP PROJECT NO. 11-824-15
 CITY OF PORT ST. LUCIE
 PROJECT NO. P22-329