

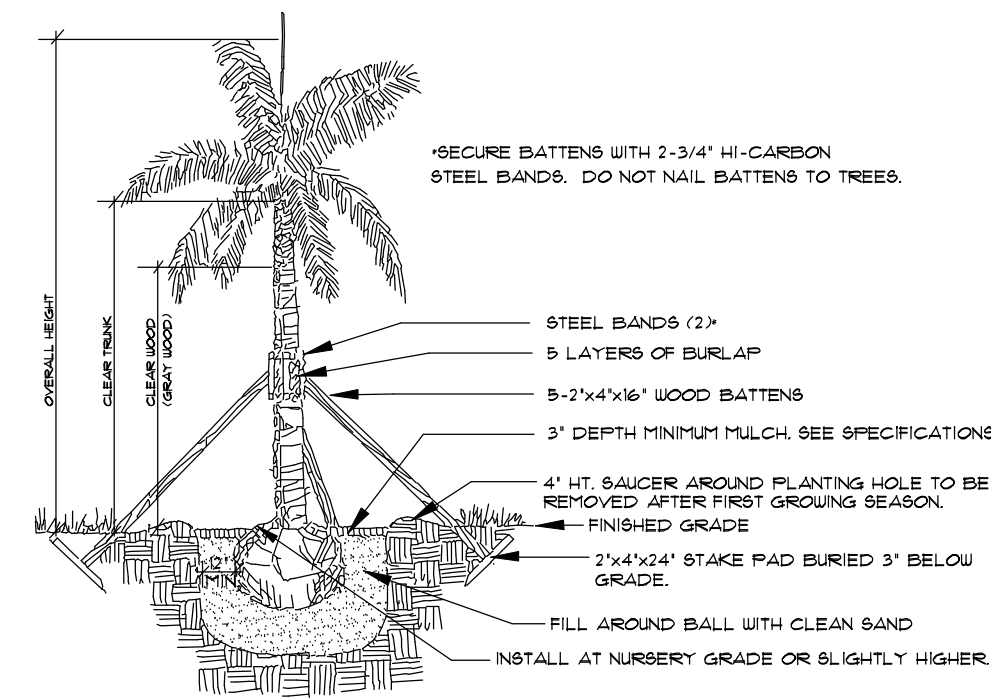
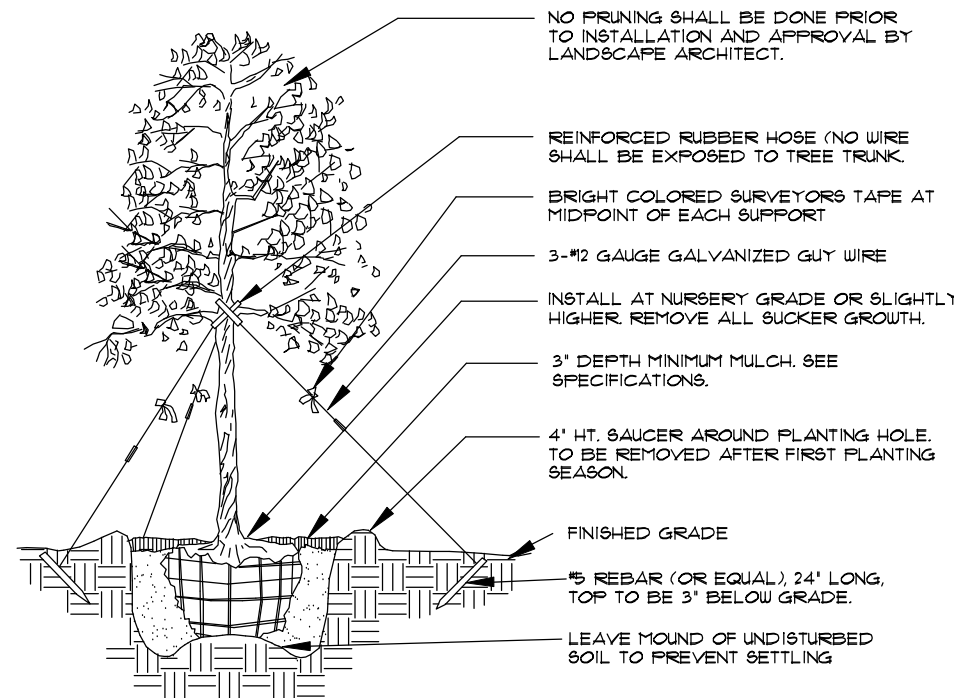
Symbols Legend

D.E.	DRAINAGE EASEMENT	O.E.	OVERHANG EASEMENT
L.M.E.	LAKE MAINTENANCE EASEMENT	G.E.	GRADING EASEMENT
L.M.A.E.	LAKE MAINTENANCE ACCESS EASEMENT	PSL	PORT ST LUCIE
R.O.W.	RIGHT OF WAY	L.E.	LANDSCAPE EASEMENT
U.E.	UTILITY EASEMENT	D.S.E.	DRAINAGE SWALE EASEMENT
U.E.-R.A.	UTILITY EASEMENT - RESTRICTED AREA (SEE "U.E." PLAT DEDICATION)	O.S.	OPEN SPACE
STM	STORM SEWER LINE WITH MANHOLE	●	SIGN
STM	STORM SEWER LINE WITH CATCH BASIN	①	LOT NUMBER
SAN	SANITARY SEWER LINE WITH MANHOLE	⊗	FIRE HYDRANT
WM	WATER MAIN		
W.M.	WATER SVC. TO LOT WITH METER		
C.O.	SANITARY SVC. TO LOT WITH CLEANOUT		

PSLUD Notes:

- LANDSCAPE PLANS SHALL BE SUBMITTED FOR THE PROJECT INDICATING THE LOCATION OF LANDSCAPE AREAS, PERMETER WALLS, FOUNDATIONS, BERMS, TREE WELLS, FENCES, GATES, SIGNS, DECORATIVE ROCKS, SCULPTURE, FOUNTAINS, AND ANY OTHER FEATURES THAT MAY INFLUENCE THE LOCATION OF WATER / WASTEWATER / RECLAIMED WATER FACILITIES. ALSO EXISTING AND PROPOSED WATER / WASTEWATER / RECLAIMED FACILITIES, AND RIGHT-OF-WAY, LOT LINES AND ALL EASEMENT INFORMATION, SHOWING OFFICIAL RECORD BOOK AND PAGE NUMBER SHALL BE INCLUDED. THE PLANS SHALL INCLUDE AND CONFORM TO THE FOLLOWING STANDARD NOTES:
- a) ALL LANDSCAPING WITHIN PSLUD UTILITY EASEMENTS AND WITHIN 10' OF PSLUD INFRASTRUCTURE SHALL COMPLY WITH CHAPTER 34 OF THE CITY'S CODES OF ORDINANCES AND PSLUD UTILITY STANDARDS.
 - b) NO LANDSCAPING SHALL BE PLANTED IN SUCH A MANNER AS TO ADVERSELY AFFECT UTILITY INSTALLATION, OPERATION, OR MAINTENANCE.
 - c) NO LANDSCAPING OTHER THAN 800 GRASSES MAY BE PLANTED WITHIN A 5' RADIUS MAINTENANCE AREA OF ANY PSLUD APPURTENANCE SUCH AS WATER METERS, BACKFLOW DEVICES, FIRE HYDRANTS, SANITARY SEWER CLEANOUTS, MANHOLES, AIR RELEASE VALVES, ETC.
 - d) WITH THE EXCEPTION OF FOXTAIL PALMS, TREES SHALL NOT BE PLANTED WITHIN 10' OF ANY PSLUD INFRASTRUCTURE. AS SPECIFICALLY APPROVED BY THE PSLUD, FOXTAIL PALMS MAY BE A DISTANCE NOT LESS THAN SEVEN (7) FEET OF ANY PSLUD INFRASTRUCTURE. ALL MEASUREMENTS ARE FROM OUTSIDE TO OUTSIDE, NOT CENTERLINE TO CENTERLINE. EXAMPLE: OUTSIDE OF PIPE TO NEAREST POINT ON TREE TRUNK.
 - e) TREES SHALL NOT BE PLANTED WITHIN TEN (10) FEET OF ANY PSLUD MAINS OR APPURTENANCES (UNLESS OTHERWISE APPROVED BY PSLUD).
 - f) UTILITY & DRAINAGE EASEMENTS TO REMAIN CLEAR OF TREES UNLESS OTHERWISE APPROVED BY THE EASEMENT HOLDER.

Planting Details



Tree Planting

- SEE SPECIFICATIONS FOR BACKFILL MIXTURE AND FERTILIZATION.
- BRACING - SPECIAL SITE CONDITIONS MAY REQUIRE MODIFICATION TO BRACING TECHNIQUE. LANDSCAPE CONTRACTOR WILL ADEQUATELY BRACE (OR WIRE) ALL TREES TO PREVENT EXCESSIVE MOVEMENT & MAINTAIN A VERTICAL POSITION.

Palm Planting

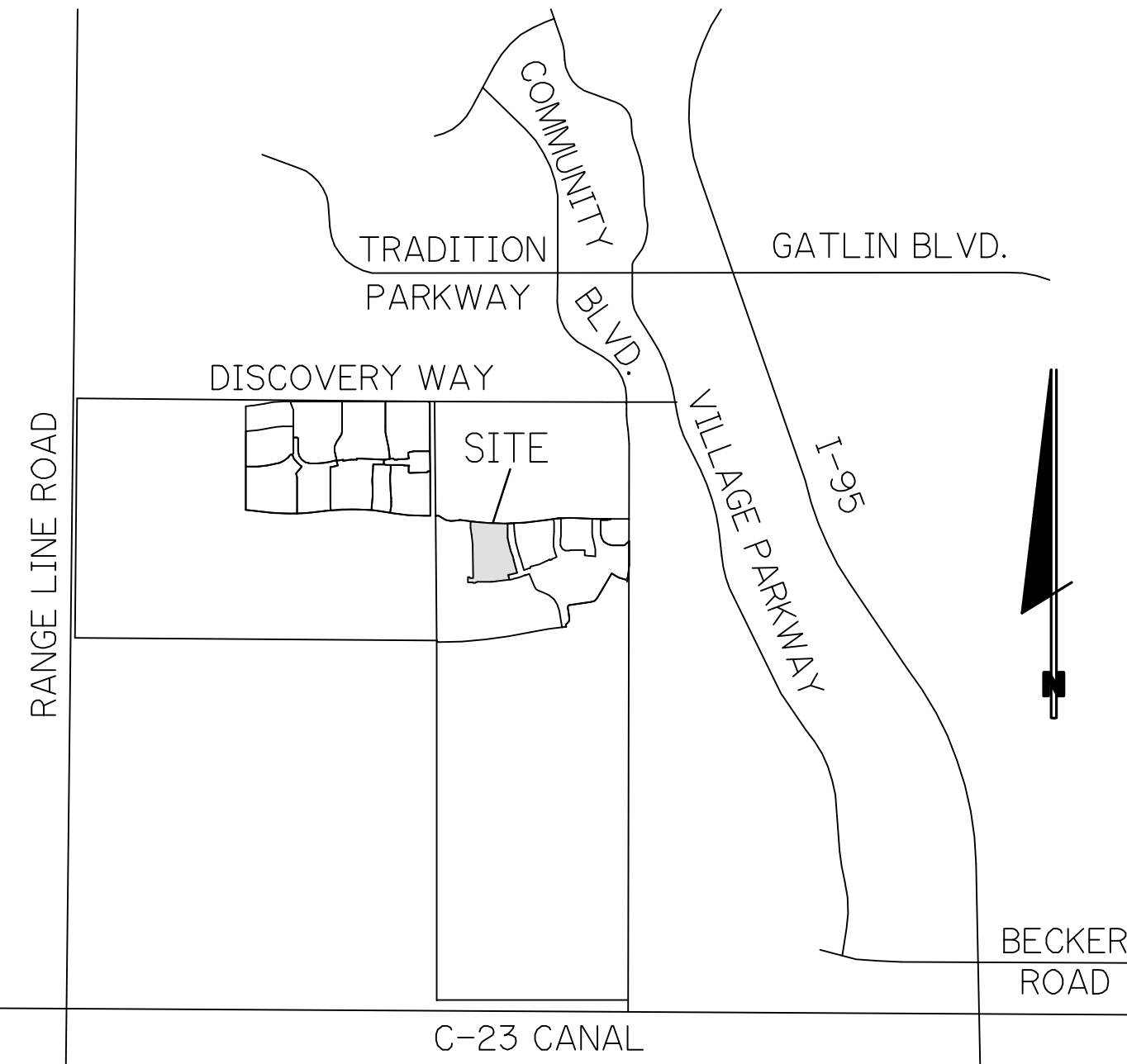
- APPLIES TO: ROYAL PALMS, QUEEN PALMS, ALEXANDER PALMS, FOXTAIL PALMS.
- SEE SPECIFICATIONS FOR BACKFILL MIXTURE AND FERTILIZATION.
- BRACING - SPECIAL SITE CONDITIONS MAY REQUIRE MODIFICATION TO BRACING TECHNIQUE. LANDSCAPE CONTRACTOR WILL ADEQUATELY BRACE ALL PALMS TO PREVENT EXCESSIVE MOVEMENT & MAINTAIN A VERTICAL POSITION.

RIVERLAND - PARCEL 'B'

(RIVERLAND MPUD)

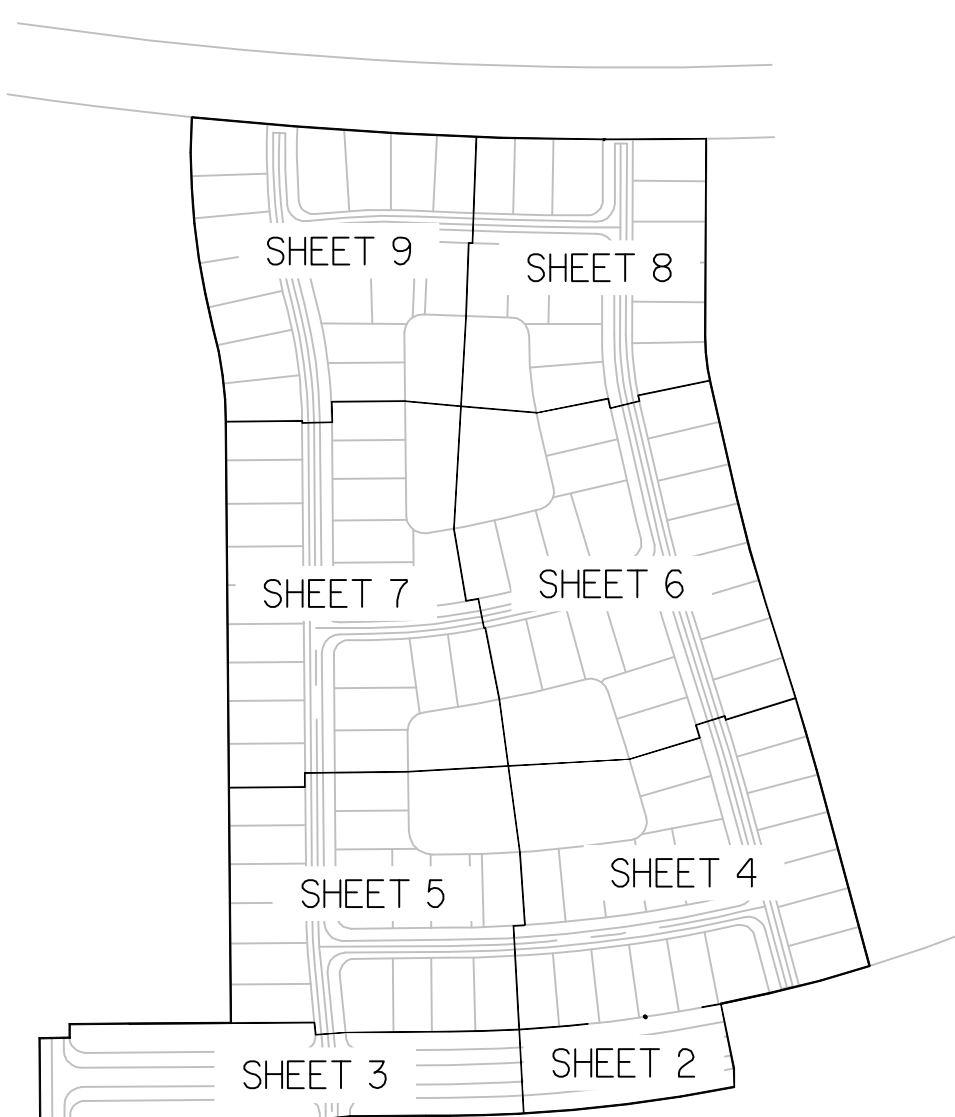
LANDSCAPE PLANS

PLAT FOUR



LOCATION MAP

N.T.S.
SEC.17/20 TWP. 37S RGE. 39E

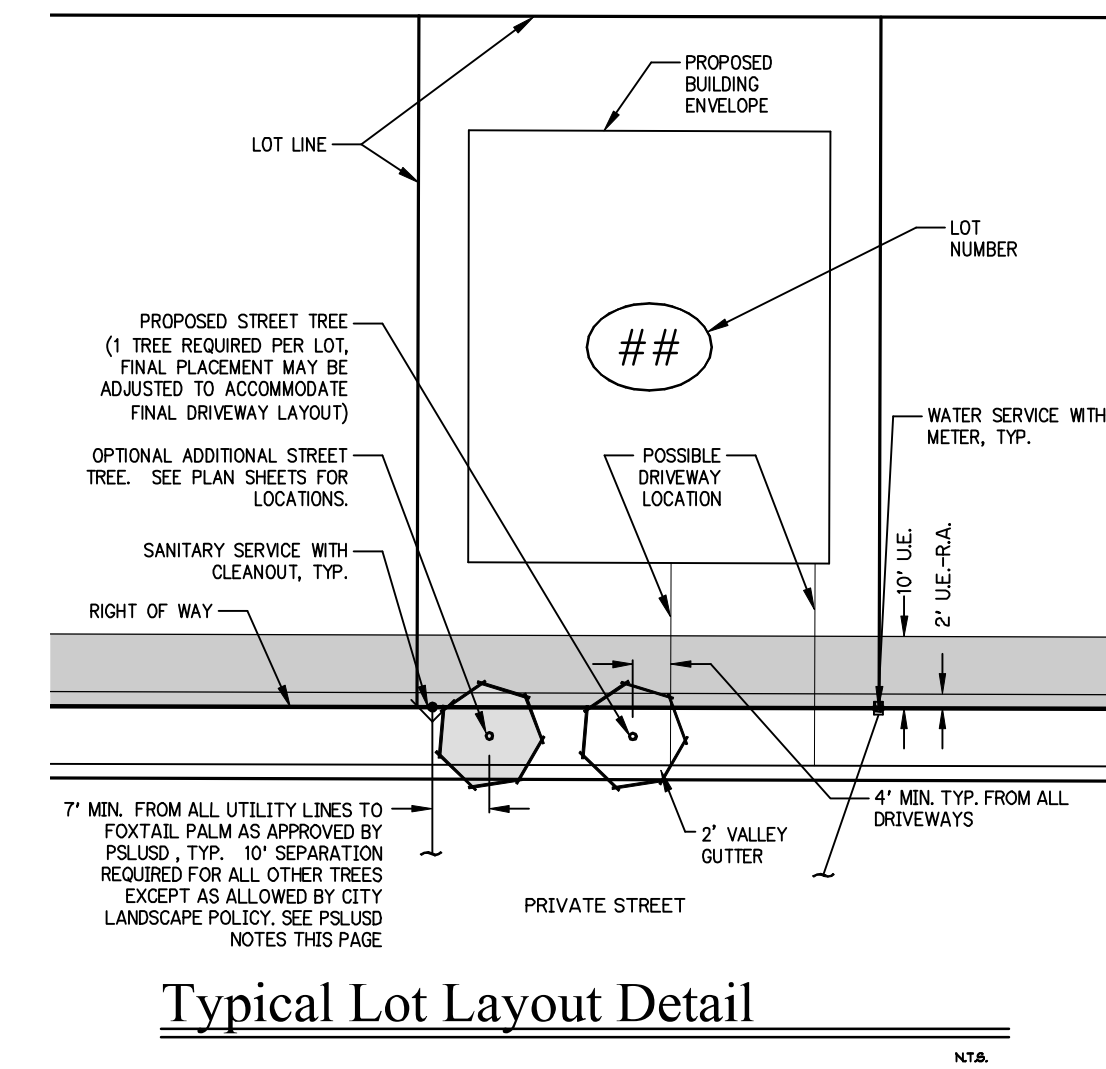


KEY MAP

N.T.S.

Sheet Index

- P4-1 Cover Sheet, Index, General Notes, and Planting Details
- P4-2 thru P4-9 Plat Four Landscape Plans



Typical Lot Layout Detail

Plant Specifications

SPECIES AND SIZE shall conform to those indicated on the drawings. Nomenclature shall conform to STANDARDIZED PLANT NAMES, current edition. All nursery stock shall be in accordance with Florida Grades and Standards for Nursery Plants, latest edition published by the Florida Department of Agriculture and Consumer Services. All plants not otherwise specified as being Florida Fancy or Specimen, shall be Florida Grade Number 1 or better as determined by the Florida Division of Plant Industry. Specimen means an exceptionally heavy, symmetrical, tightly knit plant, so trained or favored in its development that first appearance is unquestionable and outstandingly superior in form, number of branches, compactness and symmetry.

GENERAL REQUIREMENTS
All plants shall be freshly dug, sound, healthy, vigorous, well branched, and free of disease and insect eggs and larvae, and shall have adequate root systems. Trees for planting rows shall be uniform in size and shape. All materials shall be subject to approval by the Landscape Architect. Where any requirements are omitted from the plant list, the plants furnished shall be normal for the variety. Plants shall be pruned prior to delivery only upon the approval of the Landscape Architect.

CONTAINER GROWN STOCK
All container grown material shall be healthy, vigorous, well rooted plants, and established in the container in which they are sold. The plants shall have tops which are good quality and in a healthy growing condition. An established container grown plant shall be grown in that container sufficiently long enough for the new fibrous roots to have developed so that the root mass will retain its shape and hold together when removed from the container. Plant root bound in containers are unacceptable.

MEASUREMENTS
Trees: Height shall be measured from ground to the top most portion of the tree. Small, multi-trunked trees are measured to the top of main body of the crown. Spread shall be measured to the end of branching equally around the crown from the center of the trunk. Measurements are not to include any terminal growth. Single trunk trees shall be free of "V" crotches that could be points of weak limb structure or disease infestation.
Shrubs: Heights shall be measured from the ground to the average points where mature plant growth stops. Spread shall be measured to the end of branching equally around the shrub mass. Measurements are not to include any terminal growth.
Palms: Clear Trunk (C.T.) shall be measured from the ground at the time of installation to the point where the mature aged trunk joins the immature or green portion of the trunk or the head.
Overall height (O.H.) shall be measured from the ground at the time of installation to a point three quarters the length of the unopened bud. Palms with nipped or burred trunks will not be accepted.

SOIL
Planting soil for use in preparing backfill for plant pits shall be free from heavy clay, stones, lime, plants, roots or other foreign materials or noxious grasses (such as Bermuda or nut grass) and noxious weeds. It shall not contain toxic substances which may be harmful to plant growth.

COMMERCIAL FERTILIZER
Two fertilizer shall be used in all types of plantings, except palms. Granular fertilizer shall be uniform in composition, dry and free flowing. This fertilizer shall be delivered to the site in the original unopened bags, each bearing the manufacturer's statement of analysis, and shall meet the following requirements: sixteen (16%) percent nitrogen, seven (7%) percent phosphorus, twelve (12%) percent potassium plus iron. Tablet fertilizer ("Agriform" or equal) in 21 gram size shall meet the following requirements: twenty (20%) percent nitrogen, ten (10%) percent phosphorus, five (5%) percent potassium.

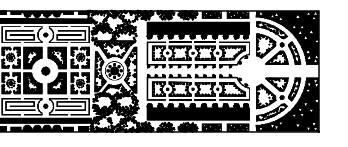
The two fertilizers will be applied at the following rates:

PLANT SIZE	16-17-12	"AGRIFORM" TABLET (21 Grams)
1 gal.	1/4 lb.	1
3 gal.	1/3 lb.	2
1-B gal.	1/2 lb.	4
1"-6" caliper	2 lbs./1" caliper	2/1" caliper
6" and larger	3 lbs./1" caliper	2/1" caliper

"Florida East Coast Palm Special" will be applied to all palms at installation at a rate of 1/2 lb. per inch of trunk caliper unless otherwise specified.

MULCH
Mulch material shall be two (2) inches of shredded Class "A" mulch (sterilized and free of seeds), moistened at the time of application to prevent wind displacement. See plant list for specification.

SUBSTITUTIONS
No substitutions of plant material types or size will be allowed without written consent of the Landscape Architect. B&B material will not be accepted as substitute for container grown material unless previously approved. Alternate substitutions shall be indicated in bid.



PARKER-YANNETTE
design group, inc.

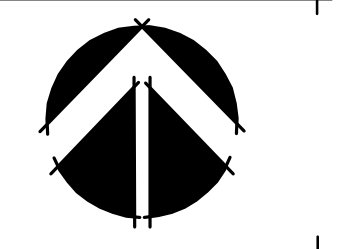
LANDSCAPE ARCHITECTURE
PLANNING • GRAPHICS
4425 Military Trail, Suite 202
Jupiter, Florida 33458

Telephone: (561) 747-5069
Fax: (561) 747-2041
Email: mail@pydgd.com
License #LC-0001347

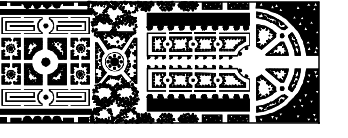
RIVERLAND - PARCEL 'B'
Developer: Riverland Associates II, LLLP
PORT ST. LUCIE, FLORIDA
COVER SHEET

DATE: 5/31
DRAWN BY: AJO
JOB NO.: 21-001
SCALE: N/A
FILENAME: Rvr Parcel B

REVISIONS:
6/21
6/23/21 PSL Cmte.
9/28/21 Update Plat extents
10/22/21 PSL Cmte. (1st str.)



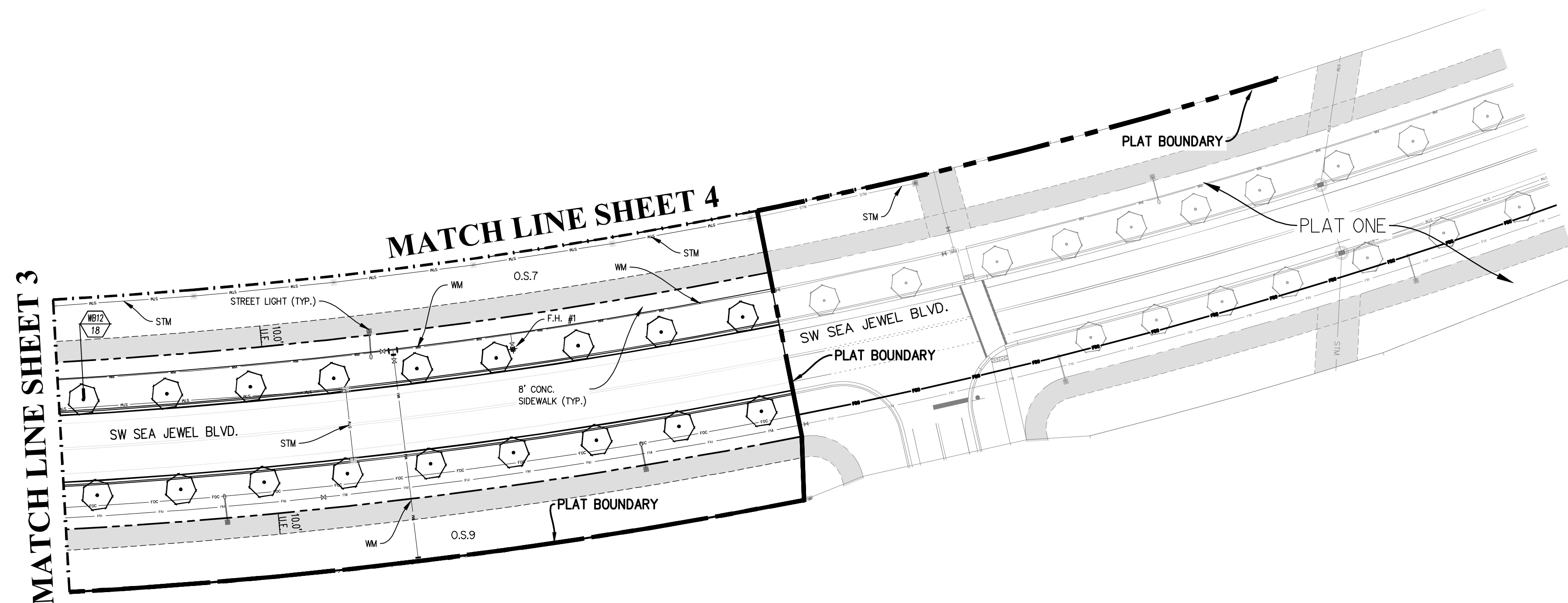
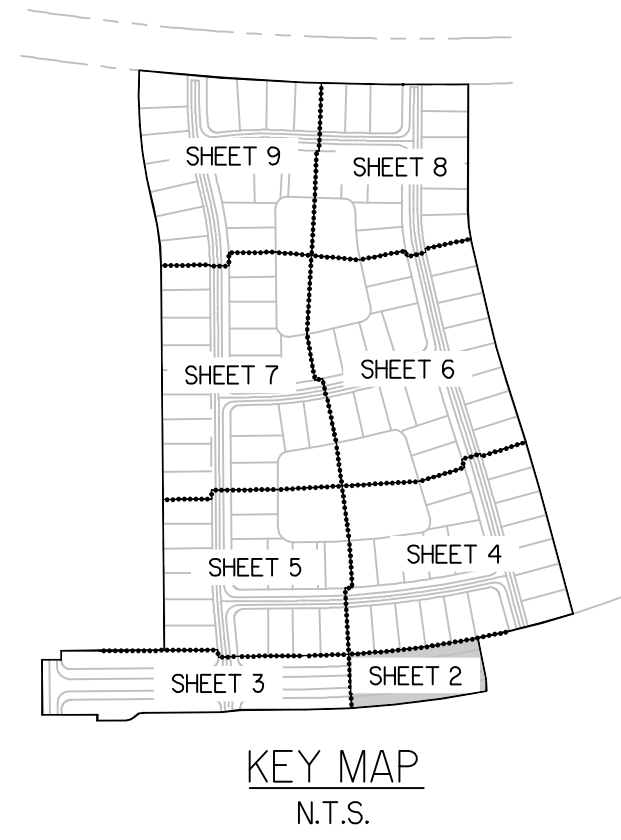
SHEET:
P4-1



PARKER-YANNETTE
design group, inc.

LANDSCAPE ARCHITECTURE
PLANNING • GRAPHICS
4425 Military Trail, Suite 202
Jupiter, Florida 33458

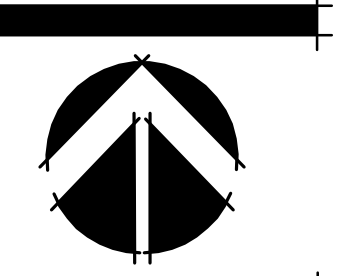
Telephone: (561) 747-5069
Fax: (561) 747-2041
Email: mail@pydg.com
License #LC-0001347



RIVERLAND - PARCEL 'B'
Developer: Riverland Associates II, LLLP
PORT ST. LUCIE, FLORIDA
PLAT FOUR PLANTING PLAN

DATE: 5.3.21
DRAWN BY: AJO
JOB NO.: 21-081
SCALE: 1" = 40'-0"
FILENAME: Rvr Parcel B

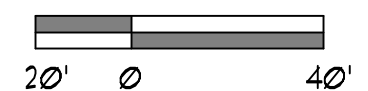
REVISIONS:
6.8.21
6.23.21 P&L Cmmts.
9.28.21 Update Plat extents
10.22.21 P&L Cmmts. (1st str.)



Plant List (Sheet P4-2 Only)

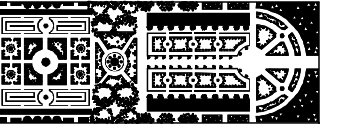
SYM	QTY	NAME	SPECIFICATIONS
PALM6			
WB12	18	Wodyetia bifurcata / Foxtail Palm	12' g.w. straight trunk, FL #1, MATCHING, tagged by owner

NOTE:
ALL PLANT MATERIAL SHALL MEET OR EXCEED SIZE AND CONTAINER SPECIFICATIONS IN PLANT LIST. PLANT MATERIALS NOT MEETING SPECIFICATIONS WILL BE REJECTED. CONTRACTOR TO COORDINATE AVAILABILITY ISSUES WITH OWNER PRIOR TO COMMENCING WORK.
* DENOTES NATIVE SPECIES



P&L PROJECT NO. P21-118

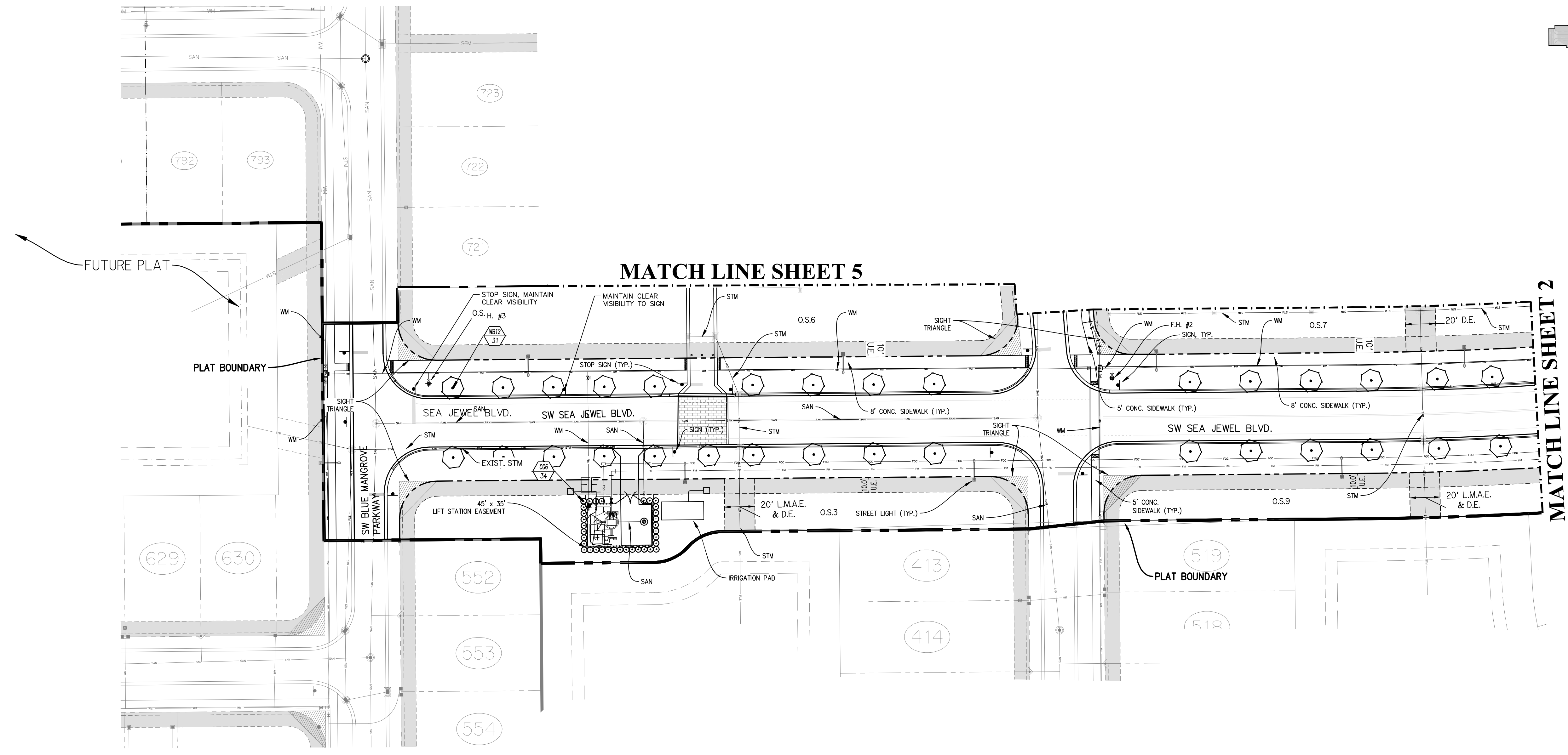
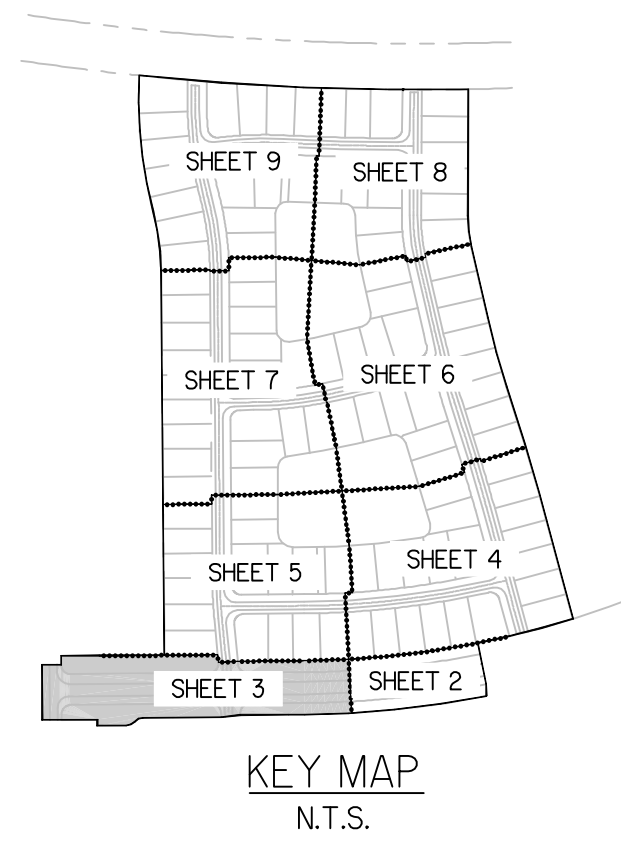
SHEET:
P4-2



PARKER-YANNETTE
design group, inc.

LANDSCAPE ARCHITECTURE
PLANNING • GRAPHICS
4425 Military Trail, Suite 202
Jupiter, Florida 33458

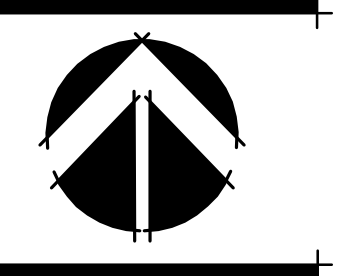
Telephone: (561) 747-5069
Fax: (561) 747-2041
Email: mail@pydg.com
License #LC-0001347



RIVERLAND - PARCEL 'B'
Developer: Riverland Associates II, LLLP
PORT ST. LUCIE, FLORIDA
PLAT FOUR PLANTING PLAN

DATE: 5.31
DRAWN BY: AJO
JOB NO.: 21-081
SCALE: 1" = 40'-0"
FILENAME: Rvr Parcel B

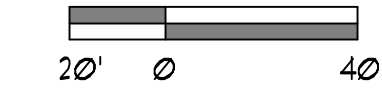
REVISIONS:
6.21
6.23.21 P&L Cmte.
9.28.21 Update Plat extents
10.22.21 P&L Cmte. (lft str.)



Plant List (Sheet P4-3 Only)

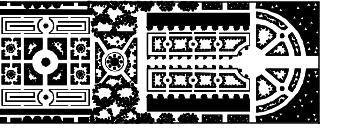
SYM	QTY	NAME	SPECIFICATIONS
PALMS			
WB12	31	Wodyetia bifurcata / Foxtail Palm	12' gw, straight trunk, FL #1, MATCHING, tagged by owner
SHRUBS, ACCENTS, AND GROUND COVER			
CG6	34	Clusia guttifera / Small Leaf Clusia	25 gal, 6' x 4', full to base, dense

NOTE:
ALL PLANT MATERIAL SHALL MEET OR EXCEED SIZE AND CONTAINER SPECIFICATIONS IN PLANT LIST. PLANT MATERIALS NOT MEETING SPECIFICATIONS WILL BE REJECTED. CONTRACTOR TO COORDINATE AVAILABILITY ISSUES WITH OWNER PRIOR TO COMMENCING WORK.
* DENOTES NATIVE SPECIES



P&L PROJECT NO. P21-118

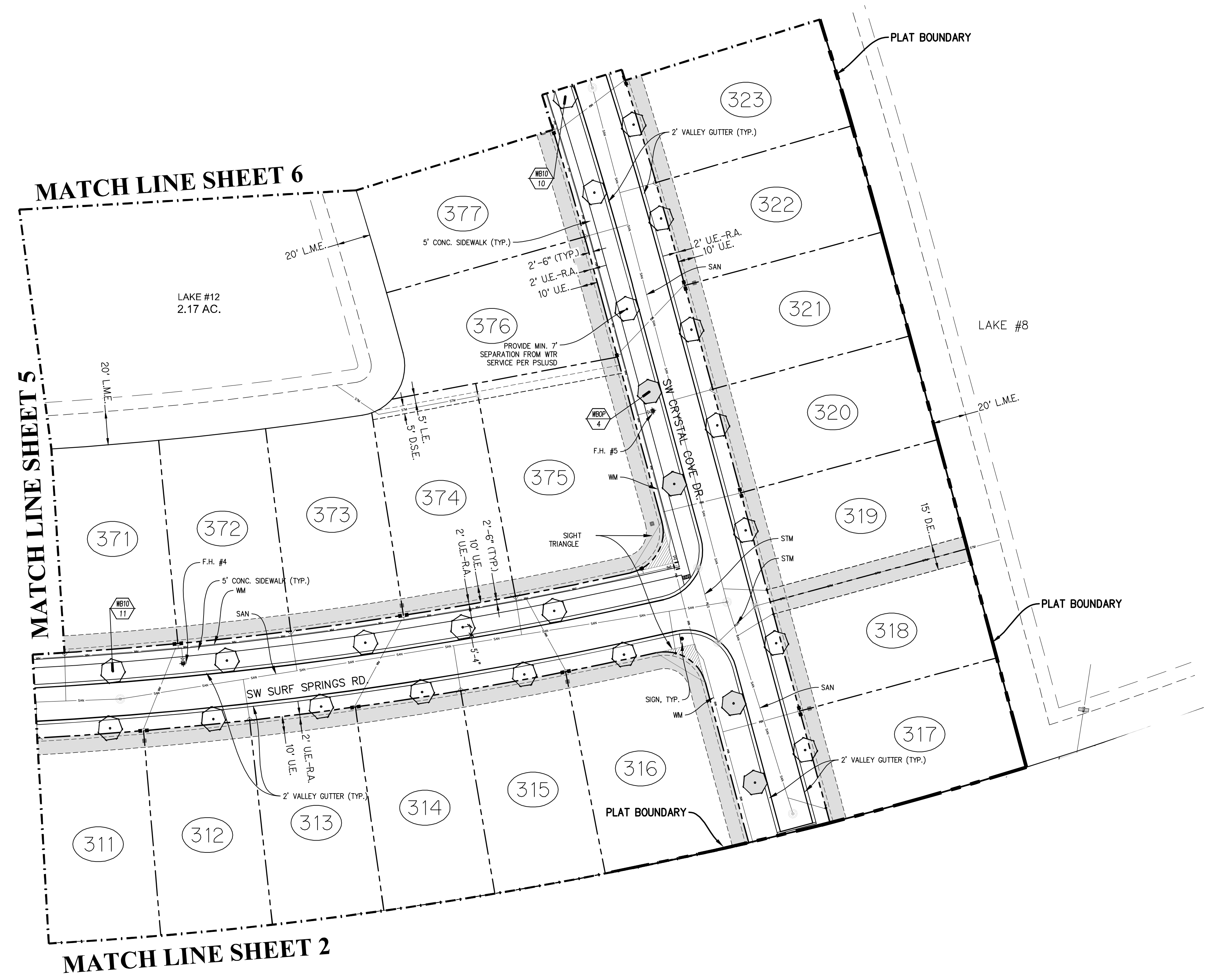
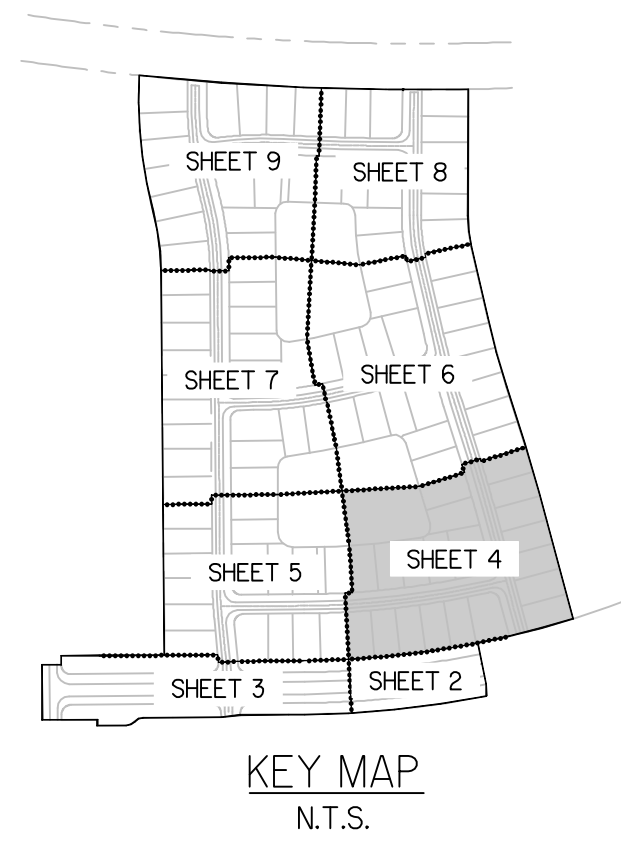
SHEET:
P4-3



PARKER-YANNETTE
design group, inc.

LANDSCAPE ARCHITECTURE
PLANNING • GRAPHICS
4425 Military Trail, Suite 202
Jupiter, Florida 33458

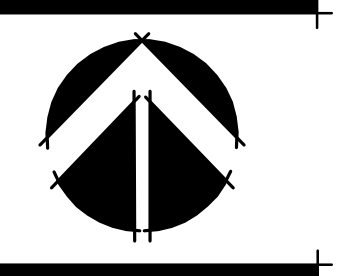
Telephone: (561) 747-5069
Fax: (561) 747-2041
Email: mail@pydg.com
License #LC-0001347



RIVERLAND - PARCEL 'B'
Developer: Riverland Associates II, LLLP
PORT ST. LUCIE, FLORIDA
PLAT FOUR PLANTING PLAN

DATE: 5.31
DRAWN BY: AJO
JOB NO.: 21-081
SCALE: 1" = 40'-0"
FILENAME: Rvr Parcel B

REVISIONS:
6.21
6.23.21 PSL Cmnts.
9.28.21 Update Plat extents
10.22.21 PSL Cmnts. (litt str.)



Plant List (Sheet P4-4 Only)

SYM	QTY	NAME	SPECIFICATIONS
TREES			
WE10	21	Wodyetia bifurcata / Foxtail Palm	10' c.t., straight trunk, full head, unscarred trunk, intact fronds
WEOP	4	Optional Additional Street Tree - Wodyetia bifurcata / Foxtail Palm	10' c.t., straight trunk, full head, unscarred trunk, intact fronds

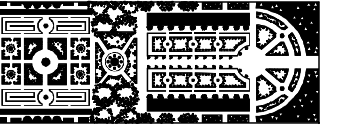
NOTE:
ALL PLANT MATERIAL SHALL MEET OR EXCEED SIZE AND CONTAINER SPECIFICATIONS IN PLANT LIST. PLANT MATERIALS NOT MEETING SPECIFICATIONS WILL BE REJECTED. CONTRACTOR TO COORDINATE AVAILABILITY ISSUES WITH OWNER PRIOR TO COMMENCING WORK.

* DENOTES NATIVE SPECIES



PSL PROJECT NO. P21-118

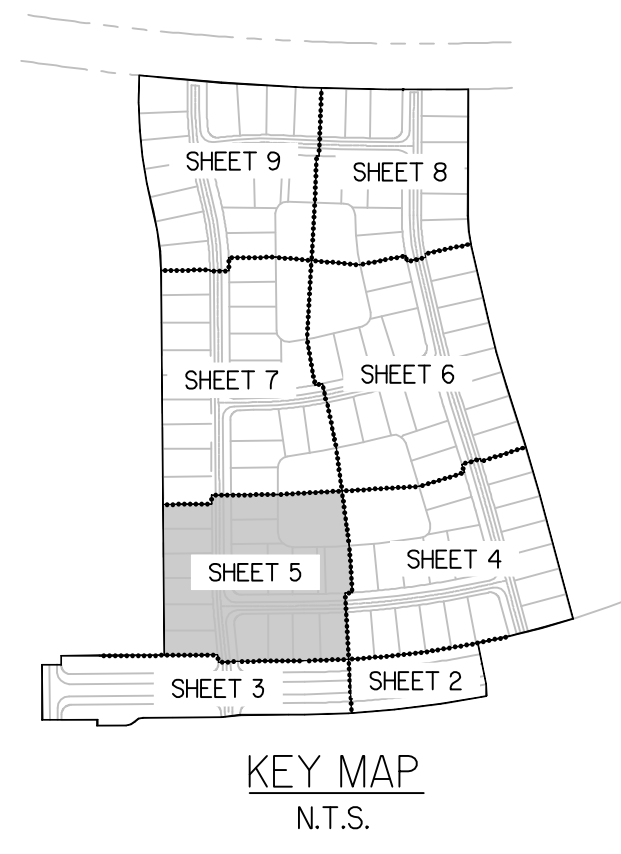
SHEET:
P4-4



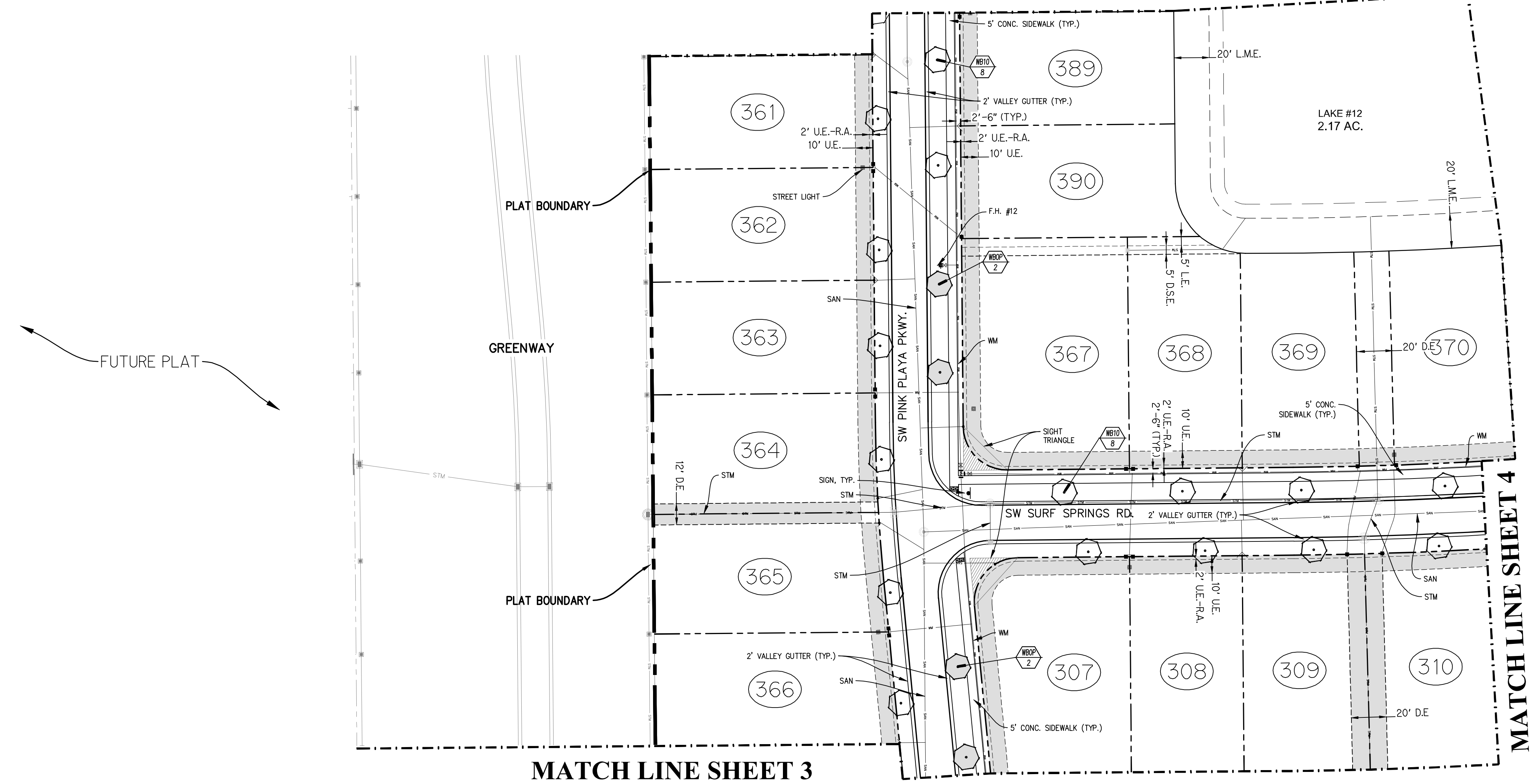
PARKER-YANNETTE
design group, inc.

LANDSCAPE ARCHITECTURE
PLANNING • GRAPHICS
4425 Military Trail, Suite 202
Jupiter, Florida 33458

Telephone: (561) 747-5069
Fax: (561) 747-2041
Email: mail@pydg.com
License #LC-0001347



MATCH LINE SHEET 7



MATCH LINE SHEET 3

MATCH LINE SHEET 4

FUTURE PLAT

Plant List (Sheet P4-5 Only)

SYM	QTY	NAME	SPECIFICATIONS
TREES			
WB10	16	Wodyetia bifurcata / Foxtail Palm	10' c.t., straight trunk, full head, unscarred trunk, intact fronds
WBOP	4	Optional Additional Street Tree - Wodyetia bifurcata / Foxtail Palm	10' c.t., straight trunk, full head, unscarred trunk, intact fronds

NOTE:
ALL PLANT MATERIAL SHALL MEET OR EXCEED SIZE AND CONTAINER SPECIFICATIONS IN PLANT LIST. PLANT MATERIALS NOT MEETING SPECIFICATIONS WILL BE REJECTED. CONTRACTOR TO COORDINATE AVAILABILITY ISSUES WITH OWNER PRIOR TO COMMENCING WORK.

* DENOTES NATIVE SPECIES



PSL PROJECT NO. P21-118

SHEET:
P4-5

RIVERLAND - PARCEL 'B'

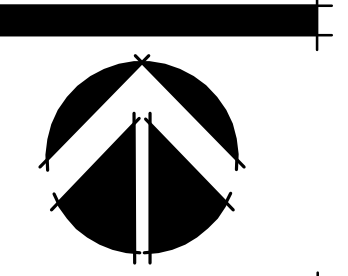
Developer: Riverland Associates II, LLLP

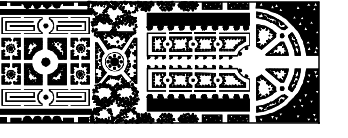
PORT ST. LUCIE, FLORIDA

PLAT FOUR PLANTING PLAN

DATE: 5.31
DRAWN BY: AJO
JOB NO.: 21-081
SCALE: 1" = 40'-0"
FILENAME: Rvr Parcel B

REVISIONS:
6.21
6.23.21 P&L Cmte.
9.28.21 Update Plat extents
10.22.21 P&L Cmte. (litt str.)

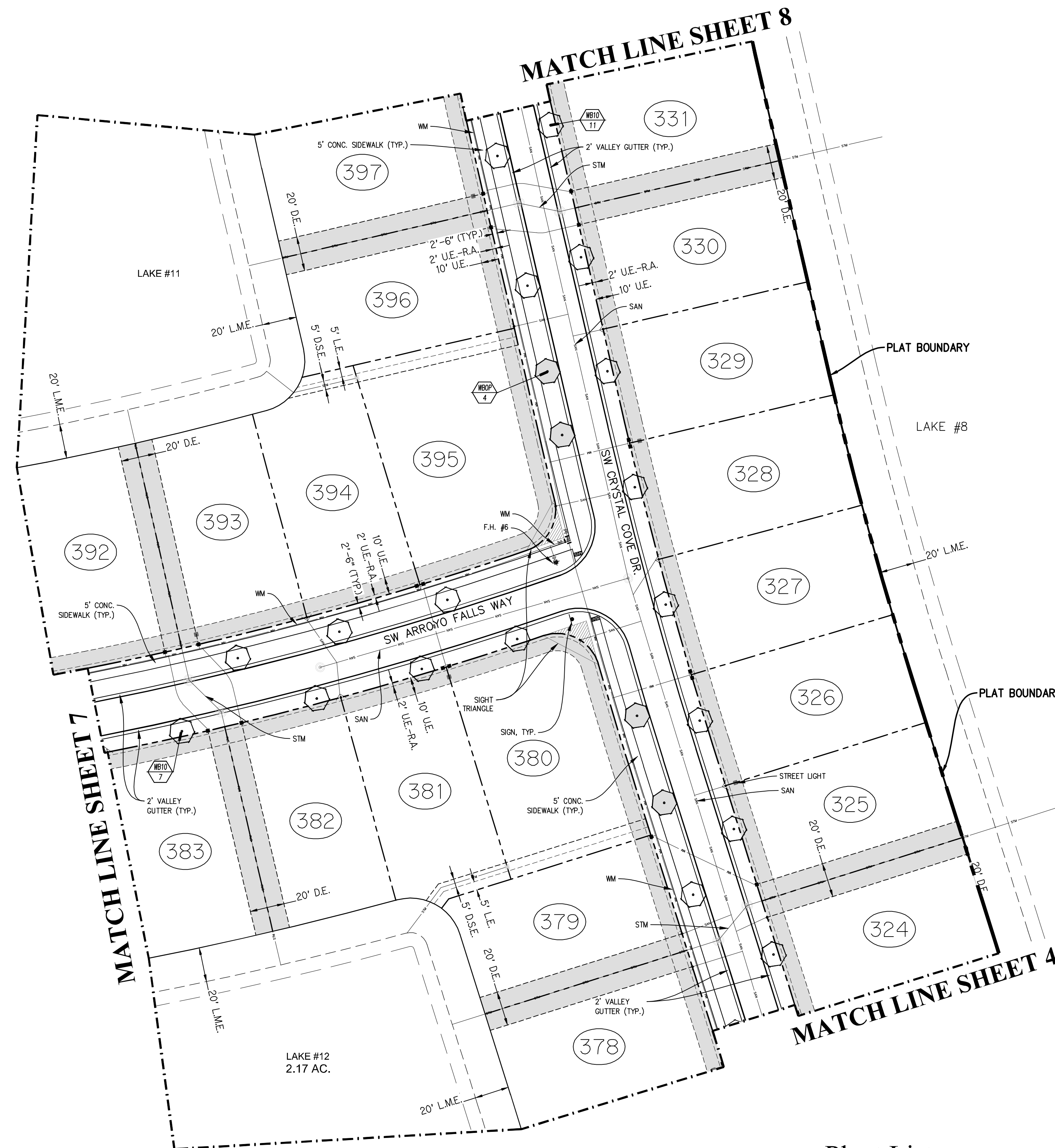
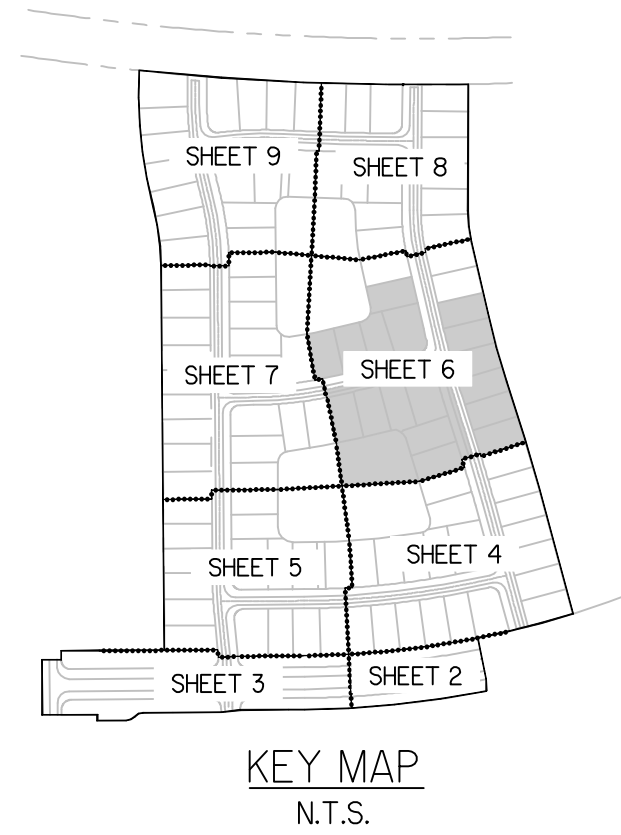




PARKER-YANNETTE
design group, inc.

LANDSCAPE ARCHITECTURE
PLANNING • GRAPHICS
4425 Military Trail, Suite 202
Jupiter, Florida 33458

Telephone: (561) 747-5069
Fax: (561) 747-2041
Email: mail@pydg.com
License #LC-0001347



Plant List (Sheet P4-6 Only)

SYM	QTY	NAME	SPECIFICATIONS
WB10	10	Wodyetia bifurcata / Foxtail Palm	10' c.t., straight trunk, full head, unscarred trunk, intact fronds
WBOP	4	Optional Additional Street Tree - Wodyetia bifurcata / Foxtail Palm	10' c.t., straight trunk, full head, unscarred trunk, intact fronds

NOTE:
ALL PLANT MATERIAL SHALL MEET OR EXCEED SIZE AND CONTAINER SPECIFICATIONS IN PLANT LIST. PLANT MATERIALS NOT MEETING SPECIFICATIONS WILL BE REJECTED. CONTRACTOR TO COORDINATE AVAILABILITY ISSUES WITH OWNER PRIOR TO COMMENCING WORK.
* DENOTES NATIVE SPECIES

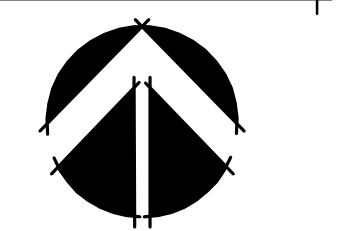


PSL PROJECT NO. P21-118

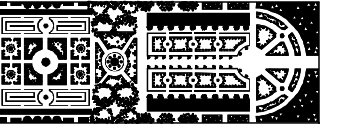
RIVERLAND - PARCEL 'B'
Developer: Riverland Associates II, LLLP
PORT ST. LUCIE, FLORIDA
PLAT FOUR PLANTING PLAN

DATE: 5.3.21
DRAWN BY: AJO
JOB NO.: 21-081
SCALE: 1" = 40'-0"
FILENAME: Rvr Parcel B

REVISIONS:
6.8.21
6.23.21 PSL Cmnte.
9.28.21 Update Plat extents
10.22.21 PSL Cmnte. (lft str.)



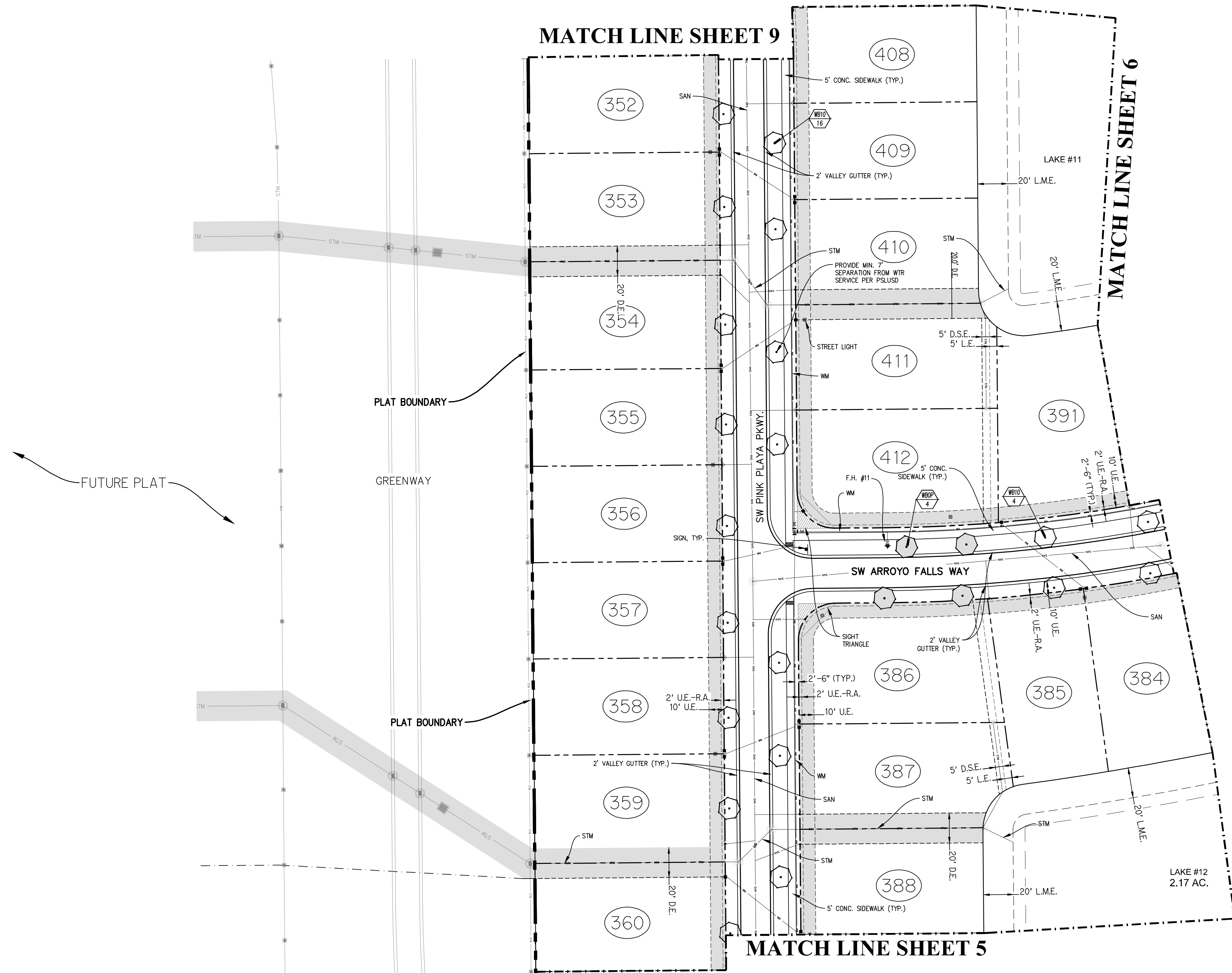
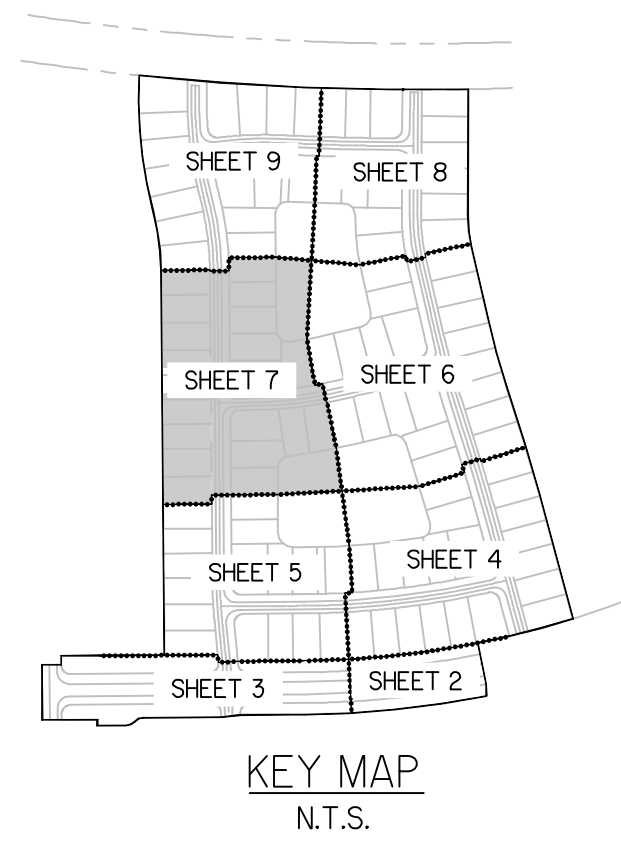
SHEET:
P4-6



PARKER-YANNETTE
design group, inc.

LANDSCAPE ARCHITECTURE
PLANNING • GRAPHICS
4425 Military Trail, Suite 202
Jupiter, Florida 33458

Telephone: (561) 747-5069
Fax: (561) 747-2041
Email: mail@pydg.com
License #LC-0001347



FUTURE PLAT

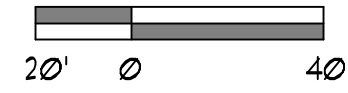
PLAT BOUNDARY
GREENWAY

Plant List (Sheet P4-7 Only)

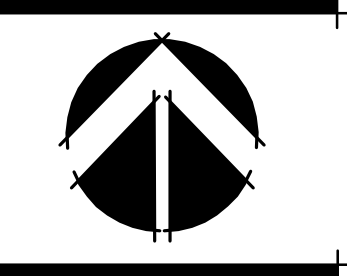
SYM	QTY	NAME	SPECIFICATIONS
TREES			
WB10	20	Wodyetia bifurcata / Foxtail Palm	10' c.t., straight trunk, full head, unscarred trunk, intact fronds
WBOP	4	Optional Additional Street Tree - Wodyetia bifurcata / Foxtail Palm	10' c.t., straight trunk, full head, unscarred trunk, intact fronds

NOTE:
ALL PLANT MATERIAL SHALL MEET OR EXCEED SIZE AND CONTAINER SPECIFICATIONS IN PLANT LIST. PLANT MATERIALS NOT MEETING SPECIFICATIONS WILL BE REJECTED. CONTRACTOR TO COORDINATE AVAILABILITY ISSUES WITH OWNER PRIOR TO COMMENCING WORK.

* DENOTES NATIVE SPECIES



PSL PROJECT NO. P21-118

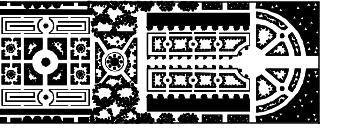


SHEET:
P4-7

RIVERLAND - PARCEL 'B'
Developer: Riverland Associates II, LLLP
PORT ST. LUCIE, FLORIDA
PLAT FOUR PLANTING PLAN

DATE: 5.31
DRAWN BY: AJO
JOB NO.: 21-081
SCALE: 1" = 40'-0"
FILENAME: Rvr Parcel B

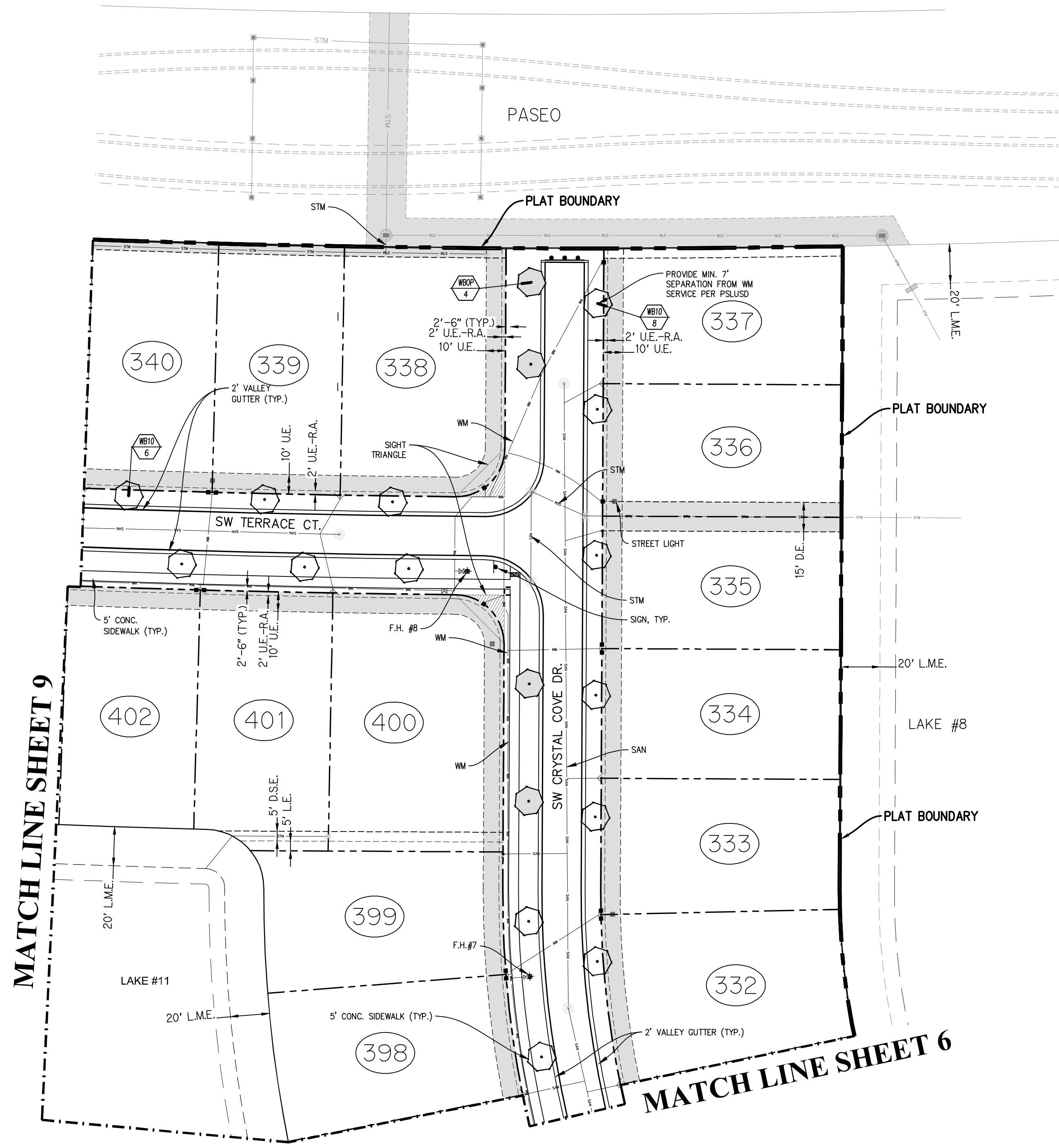
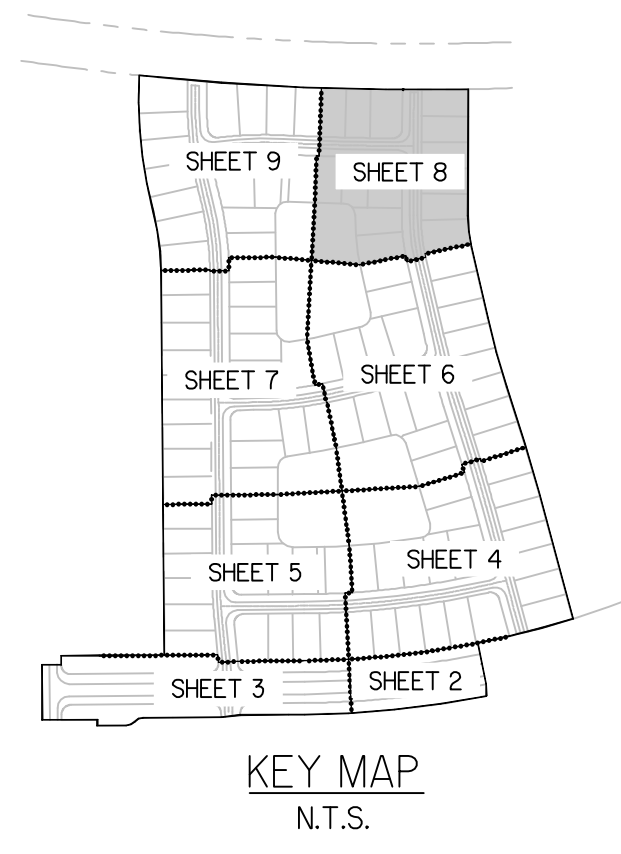
REVISIONS:
6.21
6.23.21 PSL Cmte.
9.28.21 Update Plat extents
10.22.21 PSL Cmte. (lft str.)



PARKER-YANNETTE
design group, inc.

LANDSCAPE ARCHITECTURE
PLANNING • GRAPHICS
4425 Military Trail, Suite 202
Jupiter, Florida 33458

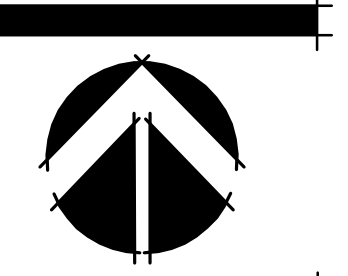
Telephone: (561) 747-5069
Fax: (561) 747-2041
Email: mail@pydg.com
License #LC-0001347



RIVERLAND - PARCEL 'B'
Developer: Riverland Associates II, LLLP
PORT ST. LUCIE, FLORIDA
PLAT FOUR PLANTING PLAN

DATE: 5.3.21
DRAWN BY: AJO
JOB NO.: 21-091
SCALE: 1" = 40'-0"
FILENAME: Rvr Parcel B

REVISIONS:
6.8.21
6.23.21 P&L Cmmts.
9.28.21 Update Plat extents
10.22.21 P&L Cmmts. (litt str.)

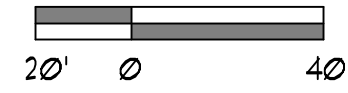


Plant List (Sheet P4-8 Only)

SYM	QTY	NAME	SPECIFICATIONS
TREES			
WB10	14	Wodyetia bifurcata / Foxtail Palm	10' c.t., straight trunk, full head, unscarred trunk, intact fronds
WB0P	4	Optional Additional Street Tree - Wodyetia bifurcata / Foxtail Palm	10' c.t., straight trunk, full head, unscarred trunk, intact fronds

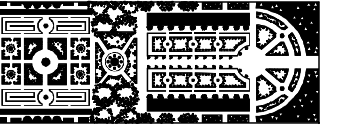
NOTE:
ALL PLANT MATERIAL SHALL MEET OR EXCEED SIZE AND CONTAINER SPECIFICATIONS IN PLANT LIST. PLANT MATERIALS NOT MEETING SPECIFICATIONS WILL BE REJECTED. CONTRACTOR TO COORDINATE AVAILABILITY ISSUES WITH OWNER PRIOR TO COMMENCING WORK.

* DENOTES NATIVE SPECIES



PSL PROJECT NO. P21-118

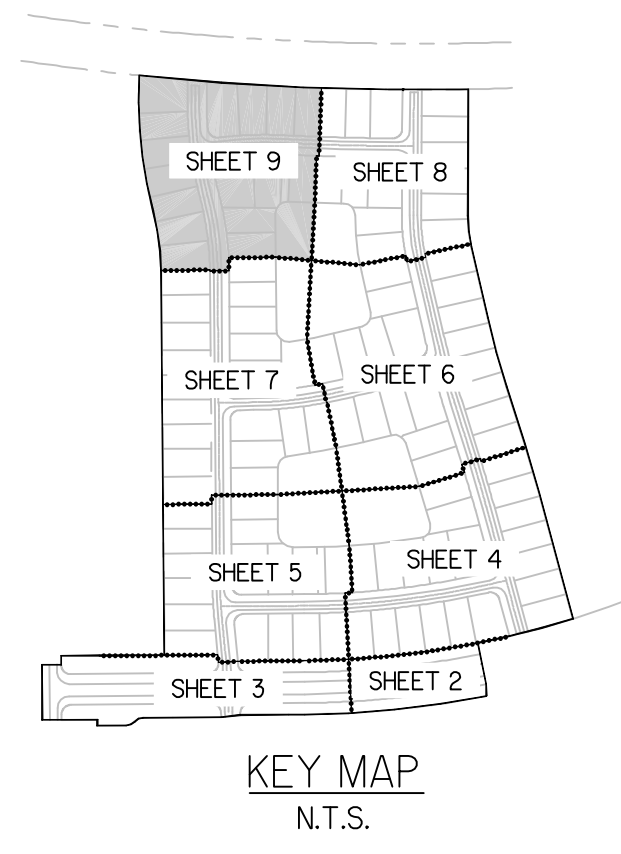
SHEET:
P4-8



PARKER-YANNETTE
design group, inc.

LANDSCAPE ARCHITECTURE
PLANNING • GRAPHICS
4425 Military Trail, Suite 202
Jupiter, Florida 33458

Telephone: (561) 747-5069
Fax: (561) 747-2041
Email: mail@pydg.com
License #LC-0001347



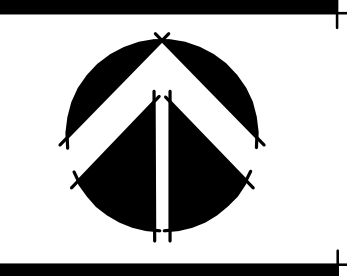
MATCH LINE SHEET 8

MATCH LINE SHEET 7

RIVERLAND - PARCEL 'B'
Developer: Riverland Associates II, LLLP
PORT ST. LUCIE, FLORIDA
PLAT FOUR STREET TREE PLAN

DATE: 6/21
DRAWN BY: AJO
JOB NO.: 21-081
SCALE: 1" = 40'-0"
FILENAME: Rvr Parcel B

REVISIONS:
6/21
6/23/21 PSL Cmte.
9/28/21 Update Plat extents
10/22/21 PSL Cmte. (1st str.)



Plant List (Sheet P4-9 Only)

SYM	QTY	NAME	SPECIFICATIONS
TREES			
WB10	11	Wodyetia bifurcata / Foxtail Palm	10' c.t., straight trunk, full head, unscarred trunk, intact fronds
WBOP	3	Optional Additional Street Tree - Wodyetia bifurcata / Foxtail Palm	10' c.t., straight trunk, full head, unscarred trunk, intact fronds

NOTE:
ALL PLANT MATERIAL SHALL MEET OR EXCEED SIZE AND CONTAINER SPECIFICATIONS IN PLANT LIST. PLANT MATERIALS NOT MEETING SPECIFICATIONS WILL BE REJECTED. CONTRACTOR TO COORDINATE AVAILABILITY ISSUES WITH OWNER PRIOR TO COMMENCING WORK.

* DENOTES NATIVE SPECIES



PSL PROJECT NO. P21-118

SHEET:
P4-9