

GENERAL NOTES

1. BOUNDS OF SCOPE OF WORK ARE TO THE EXTENT REQUIRED TO COMPLETE THE WORK.
2. REFER TO CIVIL AND MEP FOR UTILITIES AND ACCESS POINTS.
3. REFER TO CIVIL AND LANDSCAPE FOR MORE INFORMATION.

ZONING LEGEND

*ZONING DISTRICT: INSTITUTIONAL
 *LAND USE: I

FEMA FLOOD ZONE: FLOOD ZONE X (BASED ON SURVEY)
 BASE FLOOD ELEVATION (BFE): NA FOR ZONE X

GROSS LOT AREA: 128,587 S.F. (2.95 ACRES)
 BUILDING FOOTPRINT: 12,881 S.F.
 GROSS BUILDING AREA: 19,621 S.F.

**BUILDING HEIGHT: 35' ALLOWED, 31' PROPOSED

***BUILDING SETBACKS:
 FRONT YARD (EAST) 25' REQ., 86' PROPOSED
 SIDE YARD (NORTH, SOUTH) 10' REQ., 29' 6" NORTH, 24' 2" SOUTH PROPOSED
 REAR YARD (WEST) 25' REQ., 86' PROPOSED

****9.01.01 - PERMITTED PERMANENT SIGNS:
 MONUMENT SIGN REQ. 1 SF FOR EVERY 2 LINEAR FEET OF FRONTAGE - 100 SF MAX PROPOSED, 72 SF
 BUILDING SIGN REQ. 20% OF WALL FACE AREA FRONTING ON THE MAIN STREET PROPOSED, 4%

SITE PLAN LEGEND

- 'X'-X' AFF FINISH FLOOR LEVEL AT BUILDING ENTRY POINT
- AREA N.I.C.
- NEW BUILDING
- GREENSPACE
- ACCESSIBLE ROUTE
- PROPERTY LINE
- SETBACK
- ROOF OVERHANG
- FENCE
- FDC FIRE DEPARTMENT CONNECTION
- XX NUMBER OF PARKING SPACES

SPECIFIC KEYNOTES - SITE	
NUMBER	TEXT
AS02	LIGHT POLE, REFER TO ELECTRICAL
AS03	FIRE HYDRANT, REFER TO FIRE PROTECTION
AS04	MONUMENT SIGN, REFER TO STRUCTURAL
AS07	CHAINLINK TRASH ENCLOSURE, DELEGATED DESIGN. SEE SHEET G-107 FOR REFERENCE.
AS10	RELOCATED FLAG POLE
AS12	POWDER COATED ROUND TUBE WAVE BICYCLE RACK, SHOULD FIT 6 BIKES. COLOR: TBD BY OWNER
AS16	EXTERIOR LIGHT FIXTURE, REFER TO ELECTRICAL
AS19	CONCRETE DRIVE, REFER TO CIVIL
AS20	6" CONCRETE FILLED STEEL PIPE BOLLARD, REFER STRUCTURAL, CIVIL, AND SPECS
AS21	LIGHT POLE, REFER TO ELECTRICAL
AS23	NEW STRIPPING PAVEMENT MARKINGS, COORDINATE LOCATION AND COLOR WITH OWNER.
AS35	STORM MAN HOLE DRAIN, REFER TO CIVIL

PARKING COUNT - FIRE STATION

USE	REQUIREMENT	TOTAL REQ.	PROVIDED	H.C. REQ.	H.C. PROV.	BICYCLE REQ.	BICYCLE PROV.
BUSINESS OFFICE	2.84 PER 1000 SF OF AREA FOR BUSINESS	6	20	1	1	6	6
DORMITORIES	1.23 PER DORM	11					

* PER INSTITUTE OF TRANSPORTATION ENGINEER PARKING GENERATION - 4TH EDITION
 * SIX BICYCLE SPACES REQUIRED PER 7.05.04 C

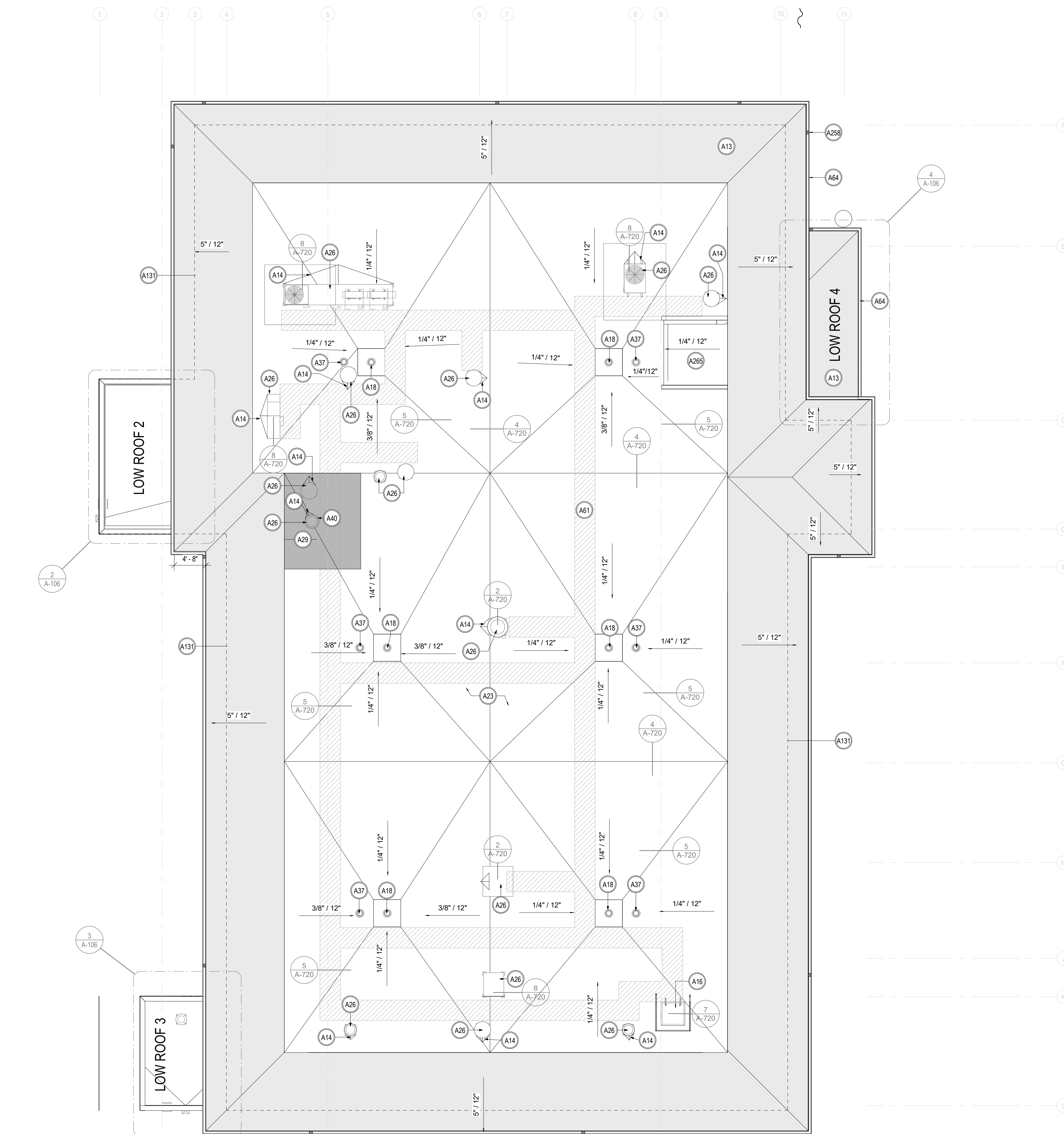
SITE EQUIPMENT

ITEM #	DESCRIPTION	MANUFACTURER	MODEL #	PROVIDED BY	INSTALLED BY	REMARKS
BK	BIKE RACK	TBD BY OWNER	TBD BY OWNER	OWNER	GC	
FL	FLAG POLE	TBD BY OWNER	TBD BY OWNER	OWNER	GC	
TR	LITTER RECEPTACLE WITH ASHTRAY	TBD BY OWNER	TBD BY OWNER	OWNER	GC	BASIS OF DESIGN: VICTOR STANLEY MODEL A-24

Project number
2241

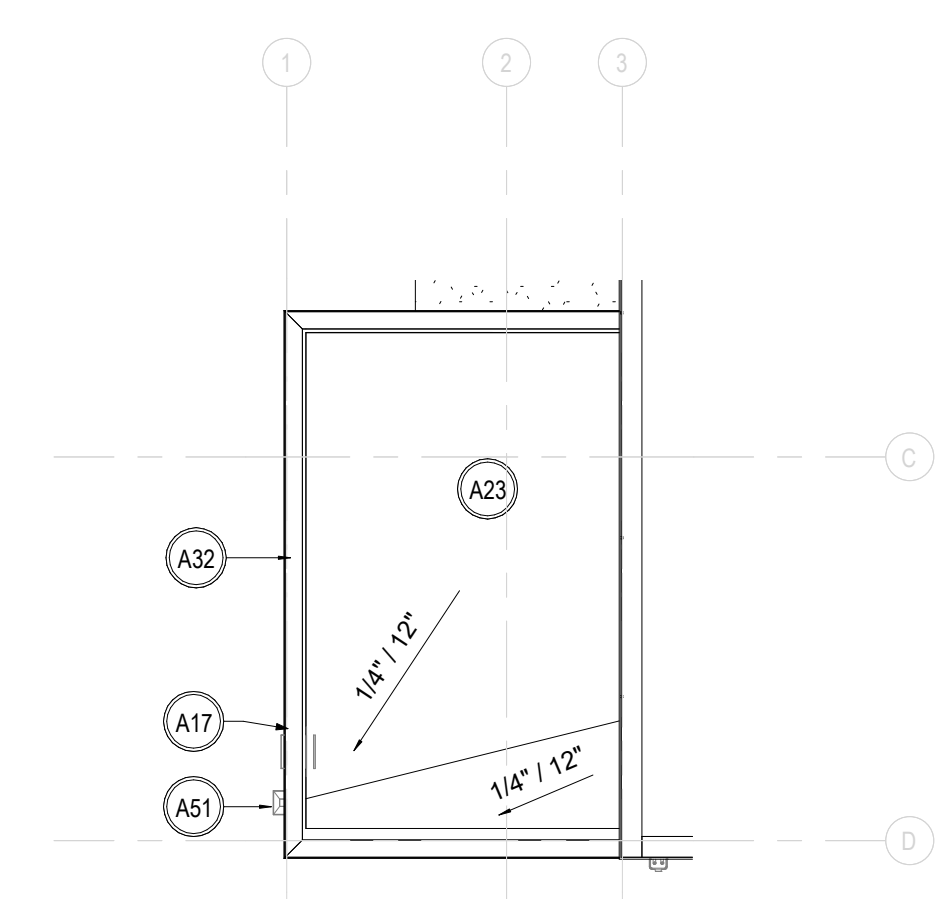
DISTRIBUTION

MILESTONE	DATE
PERMIT	4/13/23
REV 1	TBD

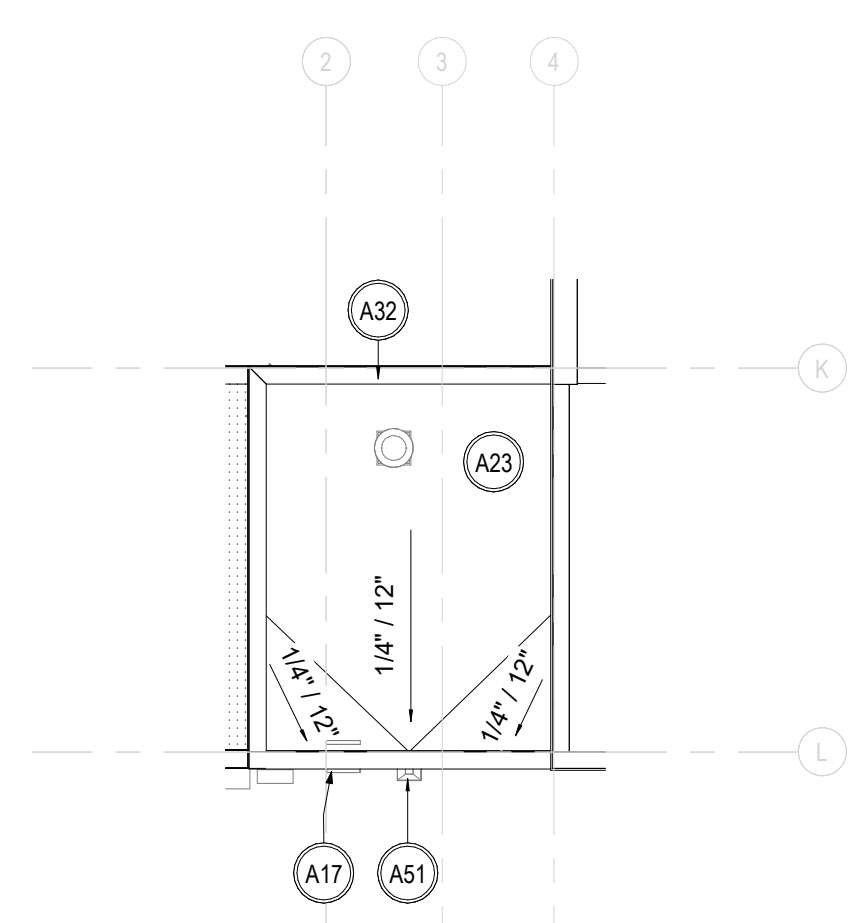


1 ROOF PLAN
1/8" = 1'-0"

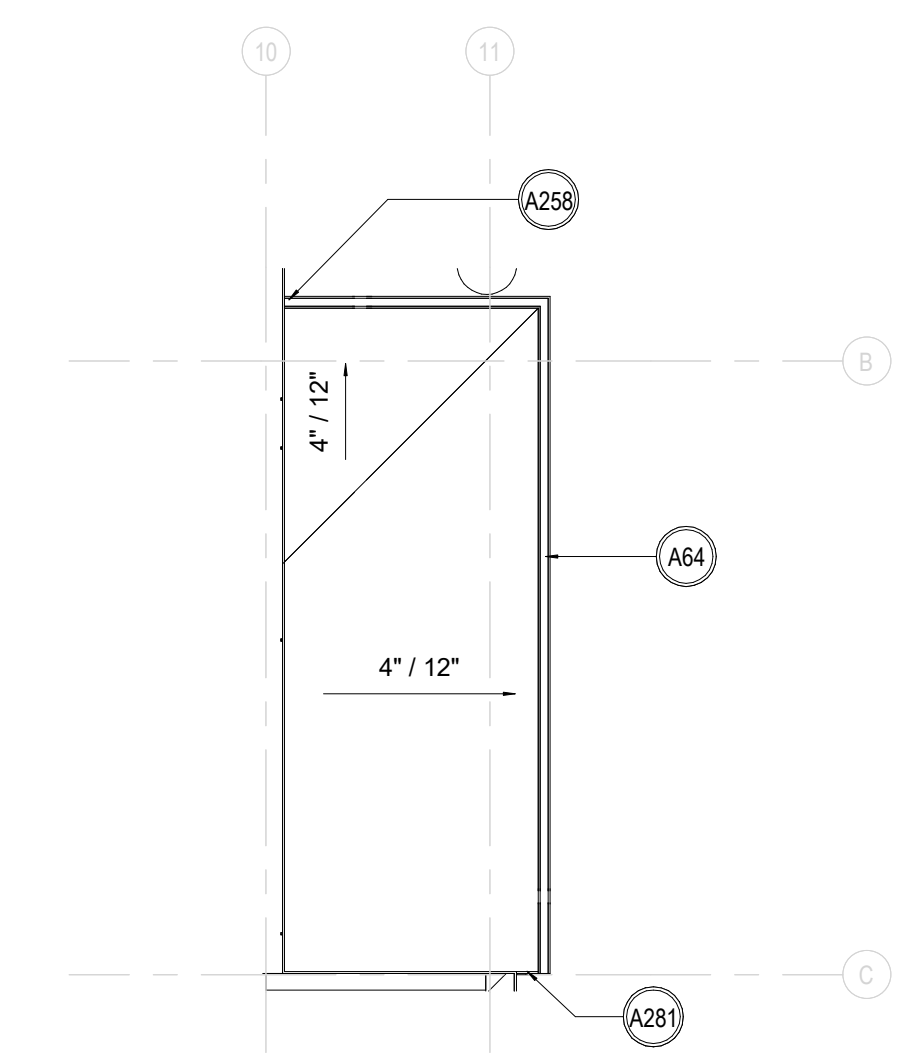
2 LOW ROOF 2 - ROOF PLAN
1/8" = 1'-0"



3 LOW ROOF 3 - ROOF PLAN
1/8" = 1'-0"



4 LOW ROOF 4 - ROOF PLAN
1/8" = 1'-0"



GENERAL NOTES

- PROVIDE ROOFING COMPONENTS AND MATERIALS APPROVED BY THE ROOFING PRODUCT MANUFACTURER. ASSEMBLE ROOFING COMPONENTS INCLUDING FLASHING, ROOF DRAINS, ETC. PER THE ROOFING PRODUCT MANUFACTURER'S DETAILS AND INSTRUCTIONS SO AS TO QUALIFY FOR, AND RECEIVE MANUFACTURER'S WEATHER-TIGHTNESS WARRANTY AS WELL AS A SPECIAL 2-YEAR PROJECT WARRANTY FROM THE ROOFING INSTALLER COVERING ALL COMPONENTS OF THE ROOFING SYSTEM SUCH AS ROOFING, BASE FLASHING, ROOF INSULATION, FASTENERS, COVER BOARDS, ETC. REFER TO SPECIFICATIONS FOR ROOFING SYSTEM, STANDARDS, AND WARRANTY INFORMATION.
- ROOF INSULATION IS R VALUE MINIMUM ACHIEVED AT ALL POINTS OF ROOF. R VALUE IS NOT AVERAGE OF ROOF.
- PROVIDE METAL ROOF COPINGS AND PARAPET FASCIAS FABRICATED OF ASTM B209 0.050-INCH ALUMINUM SHEET. COMPLY WITH "THE NRCA ROOFING MANUAL" AND THE SMOACVA "ARCHITECTURAL SHEET METAL MANUAL" REQUIREMENTS FOR DIMENSIONS AND PROFILES SHOWN UNLESS MORE STRINGENT REQUIREMENTS ARE INDICATED. PROVIDE MANUFACTURER'S 20-YEAR FINISH WARRANTY. SECURE COPINGS TO PARAPETS WITH CONT ALUMINUM CLEATS.
- PROVIDE GALVANIZED STEEL INTERNALLY REINFORCED ROOF-CURB UNITS CAPABLE OF SUPPORTING SUPERIMPOSED LIVE AND DEAD LOADS, INCLUDING EQUIPMENT LOADS, WITH WELDED OR MECHANICALLY FASTENED, NON-SAG SEALED JOINTS AND INTEGRALLY FORMED DECK-MOUNTING FLANGE AT PERIMETER BOTTOM. COORDINATE DIMENSIONS WITH ROUGHING-IN INFORMATION ON SHOP DRAWINGS OF EQUIPMENT TO BE SUPPORTED.
- REFER TO SPECIFICATIONS AND PLUMBING FOR ROOF DRAINS.
- REFER TO SPECIFICATIONS FOR ROOF HATCH.
- GENERAL - IT IS THE INTENT OF THE CONTRACT DOCUMENTS TO PROVIDE FOR A COMPLETE AND WEATHERTIGHT INSTALLATION OF ALL ROOF ITEMS, PENETRATIONS, ETC. THE CONTRACTOR SHALL PROVIDE ALL ROOF ACCESSORIES, FLASHING, SEALANT, SCUPPERS, DRAINS, LABOR, MATERIALS, EQUIPMENT, ETC. REQUIRED FOR COMPLETION OF A WEATHERTIGHT ROOF INSTALLATION. FOLLOW ALL RECOMMENDATIONS OF THE NRCA REGARDING INSTALLATION PROCEDURES, UNLESS MORE STRINGENT REQUIREMENTS ARE INDICATED.
- ELEVATIONS - LOCATIONS THAT ARE NOTED THUS (+5") INDICATE THICKNESS OF ROOF INSULATION BOARD ABOVE THE TOP OF STRUCTURAL ROOF DECK OR CONCRETE SLAB, NOT INCLUDING THE PROTECTION BOARD THICKNESS, IF ANY.
- SLOPE - ROOF SURFACE SHALL HAVE A MINIMUM SLOPE OF 1/4" PER FOOT IN A PERPENDICULAR DIRECTION FROM THE ROOF EDGE DOWN TOWARD THE ROOF DRAINS AS INDICATED BY THE ARROWS DRAWN ON THE ROOF PLAN. WHERE REQUIRED TO FACILITATE DRAINAGE, PROVIDE VALLEYS, CRICKETS, RIDGES, ETC. OF REQUIRED SLOPE TO PROPERLY DRAIN ALL ROOF SURFACES.
- ROOF DRAINS - COORDINATE LOCATION OF ALL ROOF DRAINS TO AVOID RATED WALLS, BEAMS, COLUMNS, JOISTS, ETC. BELOW.
- PENETRATIONS - PROPERLY FLASH, WATERPROOF, SECURE AND SEAL ALL ITEMS THAT PENETRATE THE ROOF MEMBRANE. DO NOT INSTALL ANY PITCH POCKETS. FOLLOW GUIDELINES OF NRCA CONCERNING FLASHING AND WATERPROOFING ALL ROOF PENETRATIONS. SEE ROOF DETAILS.
- ROOF EQUIPMENT - MOUNT ALL ROOF EQUIPMENT ON PREFABRICATED EQUIPMENT SUPPORT CURBS WITH INTEGRAL INSULATION. WHERE EQUIPMENT IS RAISED ABOVE ROOF SURFACE, ALIGN SUPPORTS PARALLEL TO DIRECTION OF WATERFLOW TO FACILITATE DRAINAGE. VERIFY ALL REQUIREMENTS WITH EQUIPMENT AND CURB MANUFACTURERS. WHERE ROOF MEMBRANE EXTENDS BENEATH EQUIPMENT, MOUNT EQUIPMENT ABOVE THE ROOF SURFACE IN ACCORDANCE WITH BUILDING CODE AND NRCA REQUIREMENTS TO ALLOW FOR INSTALLATION OF ALL REQUIRED ROOFING COMPONENTS AND TO ALLOW FOR FUTURE OWNER MAINTENANCE.
- REFER TO ROOF DIMENSION PLAN FOR DIMENSIONS.
- ROOF SLOPE MINIMUM 1/4" PER FOOT. CRICKETS AND SADDLES SLOPE 1/2" MINIMUM. OVERFLOW DRAINS TO BE 4 INCHES ABOVE FINISHED ROOF TYP. ROOF DRAIN SUMP TO BE 4 FEET BY 4 FEET WITH OVERFLOW DRAIN LOCATED OUTSIDE OF SUMP 4 FEET FROM PRIMARY DRAIN.

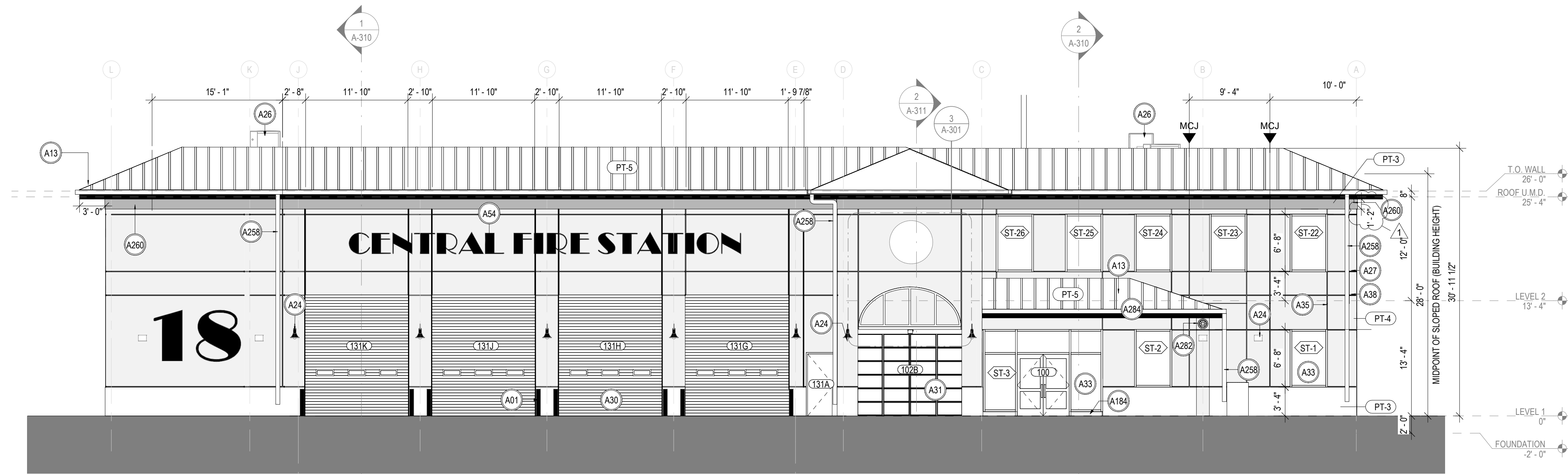
SPECIFIC KEYNOTES - ROOF	
NUMBER	TEXT
A13	STANDING SEAM METAL ROOF, COLOR TO MEET TABLE 9.2 OF CITYWIDE DESIGN STANDARDS
A14	ROOFING CRICKET - SLOPE AT 1/2" PER FOOT TO DRAIN. COORDINATE WITH EQUIPMENT
A16	GALVANIZED 36"x36" ROOF HATCH. PROVIDE POWDER COATED SAFETY RAILINGS FOR FALL PROTECTION
A17	OVERFLOW SCUPPER
A18	INTERNAL PRIMARY ROOF DRAIN WITH 4'x4' SUMP
A23	SINGLE PLY TPO ROOFING SYSTEM OVER COVER BOARD AND TAPERED R-25 MINIMUM RIGID INSULATION AT 1/4" MIN OVER METAL DECK. REFER TO SPECIFICATIONS
A26	MECHANICAL EQUIPMENT. REFER TO MECHANICAL
A29	TPO SACRIFICIAL LAYER FOR GREASE PROTECTION, 6" AROUND EXTENTS OF EQUIPMENT INCLUDING VERTICAL WALLS.
A32	PREFINISHED SLOPED METAL COPING WITH DRIP EDGE, TYP. COLOR TO MATCH STUCCO WALL BAND.
A37	SECONDARY ROOF DRAIN. REFER TO PLUMBING.
A40	KITCHEN EXHAUST FAN FOR RANGE HOOD. REFER TO MECHANICAL.
A51	PRIMARY SCUPPER AND DOWNSPOUT. COORDINATE WITH PLUMBING AND CIVIL
A61	TPO ROOFING WALKWAY PADS. REFER TO SPECIFICATIONS. EXTEND TO ALL ROOF EQUIPMENT.
A64	CONTINUOUS K-STYLE 6 INCH GUTTER SYSTEM
A131	BUILDING FOOTPRINT BELOW
A265	ELEVATOR ROOF CAP
A281	METAL ROOF EDGE FLASHING FOR WATER CONTROL

THIS DOCUMENT IS THE PROPERTY OF WANNEMACHER JENSEN ARCHITECTS, INC. IT IS TO BE USED ONLY FOR THE PROJECT AND SPECIFICATIONS INDICATED ON THE ARCHITECT'S DRAWINGS. IT IS NOT TO BE REPRODUCED OR TRANSMITTED IN ANY FORM OR BY ANY MEANS, ELECTRONIC OR MECHANICAL, WITHOUT FIRST OBTAINING THE WRITTEN PERMISSION OF WANNEMACHER JENSEN ARCHITECTS, INC. THE ARCHITECT'S LIABILITY IS LIMITED TO THE PROFESSIONAL SERVICES PROVIDED BY THE ARCHITECT. THE ARCHITECT DOES NOT WARRANT THE ACCURACY OF ANY INFORMATION PROVIDED BY OTHERS. THE ARCHITECT'S LIABILITY IS LIMITED TO THE PROFESSIONAL SERVICES PROVIDED BY THE ARCHITECT.

Project number
2241

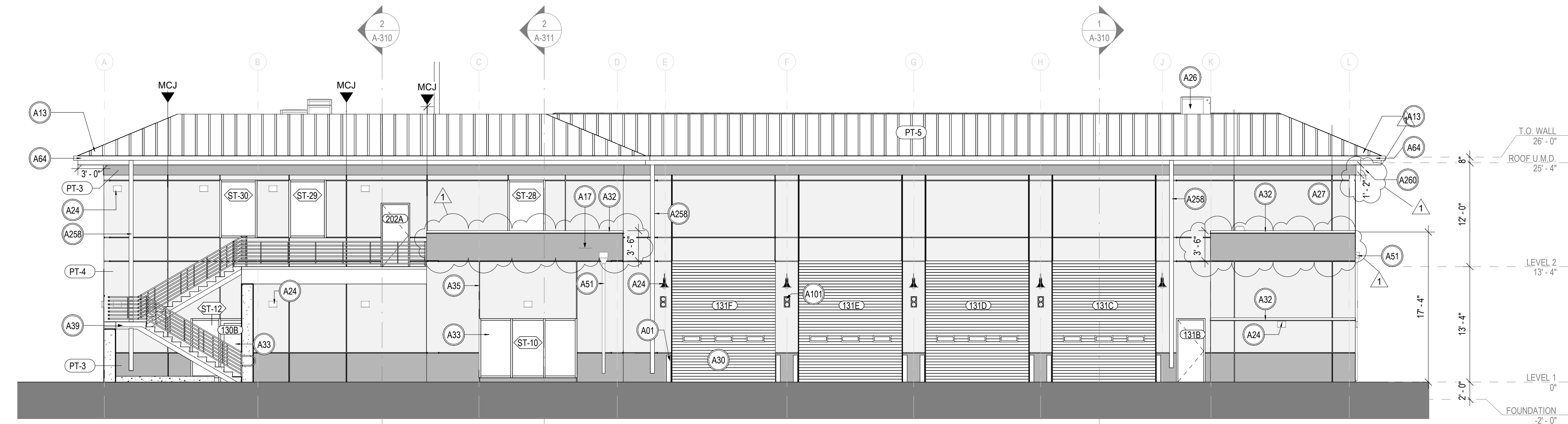
DISTRIBUTION

MILESTONE	DATE
PERMIT	4/13/23



1 EAST ELEVATION
1/8" = 1'-0"

* FRONT FACADE TRANSPARENCY AREA BETWEEN 2 AND 8 FT AFF EQUALS 601 SF OUT 1229 SF (49% TRANSPARENCY)

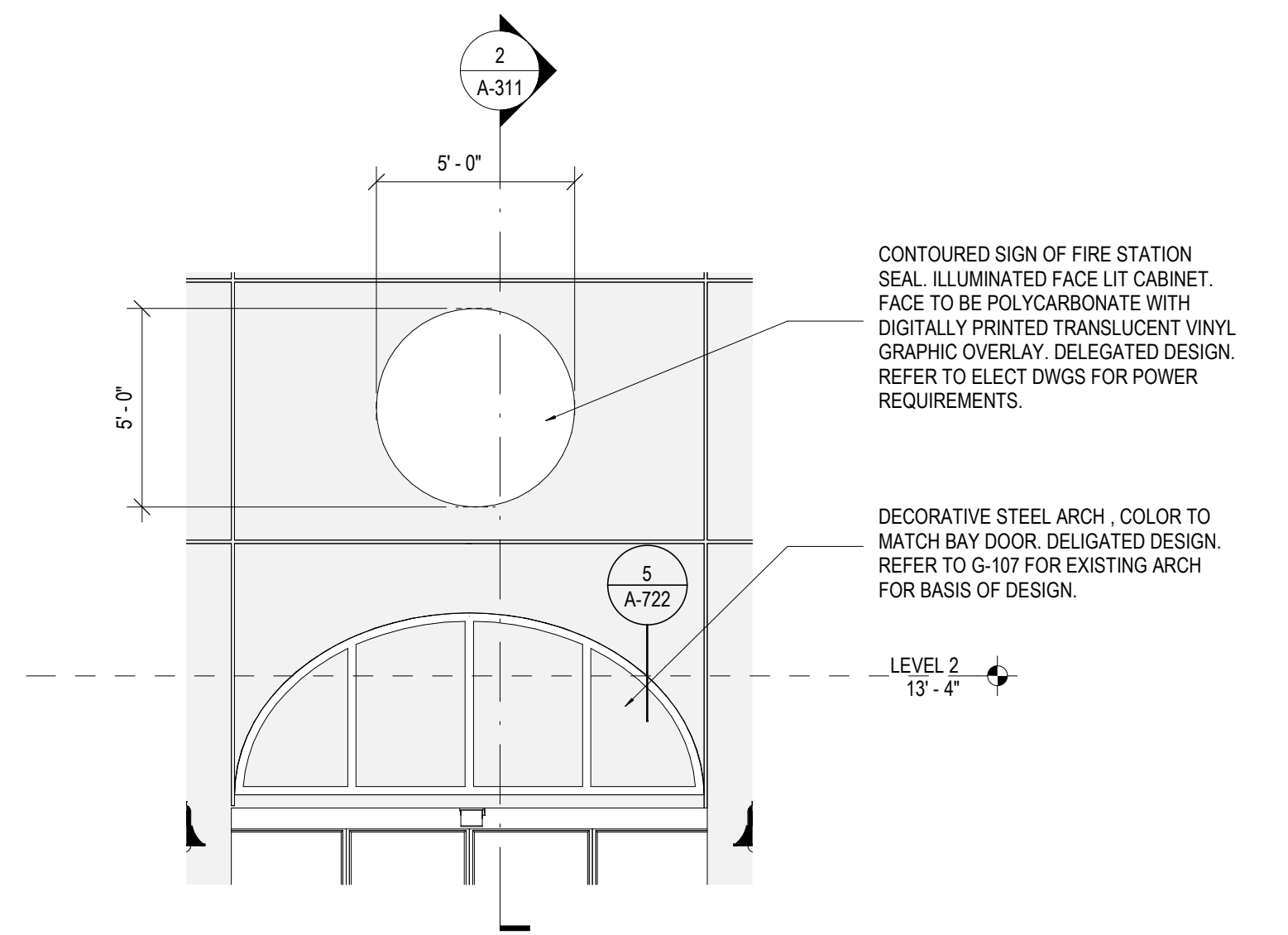


2 WEST ELEVATION
1/8" = 1'-0"

* BACK FACADE TRANSPARENCY AREA BETWEEN 2 AND 8 FT AFF EQUALS 481 SF OUT OF 1229 SF (39% TRANSPARENCY)

SPECIFIC KEYNOTE - ELEVATIONS	
Keynote Number	Keynote Text
A01	6" CONCRETE FILLED STEEL PIPE BOLLARD. REFER STRUCTURAL, CIVIL, AND SPECS
A09	CONTOURED SIGN OF FIRE STATION SEAL. ILLUMINATED FACE LIT CABINET. FACE TO BE POLYCARBONATE WITH DIGITALLY PRINTED TRANSLUCENT VINYL GRAPHIC OVERLAY. DELEGATED DESIGN. REFER TO ELECT DWGS FOR POWER REQUIREMENTS.
A13	STANDING SEAM METAL ROOF. COLOR TO MEET TABLE 9.2 OF CITYWIDE DESIGN STANDARDS
A15	DECORATIVE STEEL ARCH, COLOR TO MATCH BAY DOOR. DELEGATED DESIGN. REFER TO G-107 FOR EXISTING ARCH FOR BASIS OF DESIGN.
A17	OVERFLOW SCUPPER
A24	EXTERIOR LED SCONCE. REFER TO RCP FOR MOUNTING HEIGHT AND ELECTRICAL.
A26	MECHANICAL EQUIPMENT. REFER TO MECHANICAL
A27	PAINTED 5/8" STUCCO SYSTEM. COLOR. TBD. COLOR TO MEET TABLE 9.1 OF CITYWIDE DESIGN STANDARDS.
A30	HURRICANE RATED SECTIONAL DOOR. REFER TO DOOR SCHEDULE
A31	HURRICANE RATED SECTIONAL GLASS DOOR. COLOR. TBD. REFER TO DOOR SCHEDULE.
A32	PREFINISHED SLOPED METAL COPING WITH DRIP EDGE. TYP. COLOR TO MATCH STUCCO WALL BAND.
A33	EXTERIOR ALUMINUM STOREFRONT GLAZING SYSTEM. MISSILE LEVEL E IMPACT RATED. REFER TO SPECIFICATIONS. REFER TO FPA FOR FRAMING REQUIREMENTS.
A35	1/2" PAINTED STUCCO CONTROL SLIP JOINT TO ALIGN WITH WALL REVEALS. NO LOCATION TO EXCEED 100SF OR GREATER THAN 15' APART. TYP. COLOR TBD BY OWNER.
A38	FOAMED-IN-PLACED INSULATED CMU BLOCK. REFER TO PARTITION TYPE. REFER TO SPECIFICATIONS
A39	EXTERIOR SEALED CAST IN PLACE CONCRETE STAIR
A51	PRIMARY SCUPPER AND DOWNSPOUT. COORDINATE WITH PLUMBING AND CIVIL
A54	BACKLIT POWDER COATED ALUMINUM SIGNAGE "CENTRAL FIRE STATION". DELEGATED DESIGN, COLOR TBD
A64	CONTINUOUS K-STYLE 6 INCH GUTTER SYSTEM
A76	EXTERIOR 7/8" PAINTED STUCCO SOFFIT SYSTEM
A101	RED AND GREEN INDICATOR LIGHT. REFER TO TECH AND ELEC.
A184	CONCRETE CURB. REFER TO STRUCTURAL
A258	GUTTER DOWNSPOUT 6" DIAMETER. COORDINATE WITH PLUMBING AND CIVIL
A260	1" BUILT-OUT STUCCO BAND. 14" MIN. HEIGHT ACCORDING TO CITY DESIGN STANDARDS.
A282	PRECAST MEDALLION. 15" DIAMETER. MOUNT ON TOP OF FINISHED STUCCO IN MORTAR BED. TOOL MORTAR JOINT WITH CONCAVE FINISH. DELEGATED DESIGN.
A284	PORCH PER ST. LUCIE CITY DESIGN STANDARDS

FINISH LEGEND	
PT-3	DESCRIPTION: EXTERIOR PAINT ON STUCCO MANUFACTURER: SHERWIN WILLIAMS COLOR: CITYSCAPE SW7067 REMARKS: CONFORMS TO ST. LUCIE DESIGN STANDARDS- APPENDIX A
PT-4	DESCRIPTION: EXTERIOR PAINT ON STUCCO MANUFACTURER: SHERWIN WILLIAMS COLOR: ARGOS SW7065 REMARKS: CONFORMS TO ST. LUCIE DESIGN STANDARDS- APPENDIX A
PT-5	DESCRIPTION: COLOR FOR STANDING SEAM ROOF MANUFACTURER: DYNAMIC METALS COLOR: PRE-WEATHERED GALVALUME REMARKS: FASCIA TO MATCH. CONFORMS TO ST. LUCIE DESIGN STANDARDS - ROOF COLOR CHART. 9.2.1



3 EAST ELEVATION - ENLARGED FACADE
1/4" = 1'-0"

10-1 ARCHITECTURAL ELEMENTS REQUIRED PER ST. LUCIE CITYWIDE DESIGN STANDARDS	
FUTURE LAND USE DESIGNATION NUMBER OF REQUIRED ARCHITECTURAL ELEMENTS	
CG, CL, CH, ROI, L, MU, O 5	plus 1 additional element if parking is located at front of building
CS, LI, HI, PIP 3	plus 1 additional element if parking is located at front of building
RL, RM, RH, RGC 4	plus 1 additional element if parking is located at front of building
KEYNOTE	ARCHITECTURAL ELEMENT
A13	STANDING SEAM METAL ROOF.
A33	VERTICAL, RECTANGULAR WINDOWS - AT LEAST 50% OF WINDOW AREA ON FRONT BUILDING FACE.
A13	SLOPED PRIMARY ROOF WITH AN OVERHANG THAT IS AT LEAST 3 FEET.
A284	PORCH/PORTRICO
A35	EXPRESSION LINES THAT COVER AT LEAST 30% OF ONE SIDE OF A BUILDING FACE AREA (1/2" WIDE AND DEEP, MIN.)
A282	MEDALLIONS (ON FRONT AND AT LEAST ONE SIDE)

Wannemacher Jensen Architects, Inc.
132 Mirror Lake Drive N, Unit 301
St. Petersburg, Florida 33701-3214
(727) 822-5566
www.wjarc.com
AF94244

OTHER PROJECTS AND SERVICES PROVIDED BY WANNEMACHER JENSEN ARCHITECTS, INC. ARE NOT BEING REFERENCED IN THIS DOCUMENT. THE ARCHITECT'S RESPONSIBILITY IS LIMITED TO THE PROJECT AND SERVICES PROVIDED IN THIS DOCUMENT. THE ARCHITECT'S LIABILITY IS LIMITED TO THE PROJECT AND SERVICES PROVIDED IN THIS DOCUMENT. THE ARCHITECT'S LIABILITY IS LIMITED TO THE PROJECT AND SERVICES PROVIDED IN THIS DOCUMENT.

ST. LUCIE MILNER DR. FIRE STATION
ST. LUCIE COUNTY FIRE DISTRICT
5160 NW MILNER DR. PORT ST. LUCIE, FL 34983

Project number	2241
DISTRIBUTION	
MILESTONE	DATE
PERMIT	4/13/23
REV 1	TBD

EXTERIOR ELEVATIONS
A-301

SPECIFIC KEYNOTE - ELEVATIONS	
Keynote Number	Keynote Text
A01	6" CONCRETE FILLED STEEL PIPE BOLLARD. REFER STRUCTURAL, CIVIL, AND SPECS
A09	CONTOURED SIGN OF FIRE STATION SEAL. ILLUMINATED FACE LIT CABINET. FACE TO BE POLYCARBONATE WITH DIGITALLY PRINTED TRANSLUCENT VINYL GRAPHIC OVERLAY. DELEGATED DESIGN. REFER TO ELEC DWGS FOR POWER REQUIREMENTS.
A13	STANDING SEAM METAL ROOF. COLOR TO MEET TABLE 9.2 OF CITYWIDE DESIGN STANDARDS
A15	DECORATIVE STEEL ARCH. COLOR TO MATCH BAY DOOR. DELEGATED DESIGN. REFER TO G-107 FOR EXISTING ARCH FOR BASIS OF DESIGN.
A17	OVERFLOW SCUPPER
A24	EXTERIOR LED SCONCE. REFER TO RCP FOR MOUNTING HEIGHT AND ELECTRICAL.
A26	MECHANICAL EQUIPMENT. REFER TO MECHANICAL
A27	PAINTED 5/8" STUCCO SYSTEM. COLOR. TBD. COLOR TO MEET TABLE 9.1 OF CITYWIDE DESIGN STANDARDS.
A30	HURRICANE RATED SECTIONAL DOOR. REFER TO DOOR SCHEDULE
A31	HURRICANE RATED SECTIONAL GLASS DOOR. COLOR. TBD. REFER TO DOOR SCHEDULE.
A32	PREFINISHED SLOPED METAL COPING WITH DRIP EDGE. TYP. COLOR TO MATCH STUCCO WALL BAND.
A33	EXTERIOR ALUMINUM STOREFRONT GLAZING SYSTEM. MISSILE LEVEL E IMPACT RATED. REFER TO SPECIFICATIONS. REFER TO PFA FOR FRAMING REQUIREMENTS.
A35	1/2" PAINTED STUCCO CONTROL SLIP JOINT TO ALIGN WITH WALL REVEALS. NO LOCATION TO EXCEED 100SF OR GREATER THAN 15' APART. TYP. COLOR TBD BY OWNER.
A38	FOAMED-IN-PLACED INSULATED CMU BLOCK. REFER TO PARTITION TYPE. REFER TO SPECIFICATIONS
A39	EXTERIOR SEALED CAST IN PLACE CONCRETE STAIR
A51	PRIMARY SCUPPER AND DOWNSPOUT. COORDINATE WITH PLUMBING AND CIVIL
A54	BACKLIT POWDER COATED ALUMINUM SIGNAGE "CENTRAL FIRE STATION". DELEGATED DESIGN, COLOR TBD
A64	CONTINUOUS K-STYLE 6 INCH GUTTER SYSTEM
A76	EXTERIOR 7/8" PAINTED STUCCO SOFFIT SYSTEM
A101	RED AND GREEN INDICATOR LIGHT. REFER TO TECH AND ELEC.
A184	CONCRETE CURB. REFER TO STRUCTURAL
A258	GUTTER DOWNSPOUT 6" DIAMETER. COORDINATE WITH PLUMBING AND CIVIL
A260	1" BUILT-OUT STUCCO BAND. 14" MIN. HEIGHT ACCORDING TO CITY DESIGN STANDARDS.
A282	PRECAST MEDALLION. 15" DIAMETER. MOUNT ON TOP OF FINISHED STUCCO IN MORTAR BED. TOOL MORTAR JOINT WITH CONCAVE FINISH. DELEGATED DESIGN
A284	PORCH PER ST. LUCIE CITY DESIGN STANDARDS

FINISH LEGEND

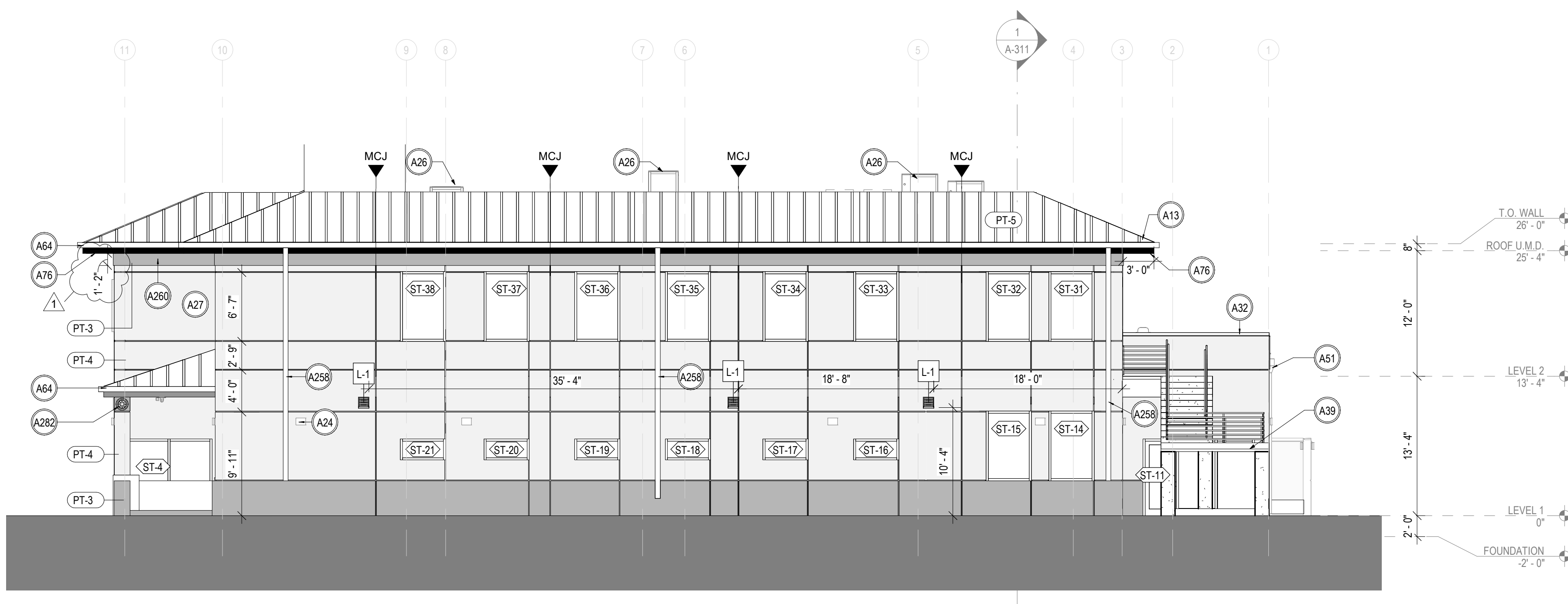
PT-3	DESCRIPTION: EXTERIOR PAINT ON STUCCO MANUFACTURER: SHERWIN WILLIAMS COLOR: CITYSCAPE SW7067 REMARKS: CONFORMS TO ST. LUCIE DESIGN STANDARDS- APPENDIX A
PT-4	DESCRIPTION: EXTERIOR PAINT ON STUCCO MANUFACTURER: SHERWIN WILLIAMS COLOR: ARGOS SW7065 REMARKS: CONFORMS TO ST. LUCIE DESIGN STANDARDS- APPENDIX A
PT-5	DESCRIPTION: COLOR FOR STANDING SEAM ROOF MANUFACTURER: DYNAMIC METALS COLOR: PRE-WEATHERED GALVALUME REMARKS: FASCIA TO MATCH. CONFORMS TO ST. LUCIE DESIGN STANDARDS - ROOF COLOR CHART. 9.2.1

10-1 ARCHITECTURAL ELEMENTS REQUIRED PER ST. LUCIE CITYWIDE DESIGN STANDARDS

FUTURE LAND USE DESIGNATION NUMBER OF REQUIRED ARCHITECTURAL ELEMENTS

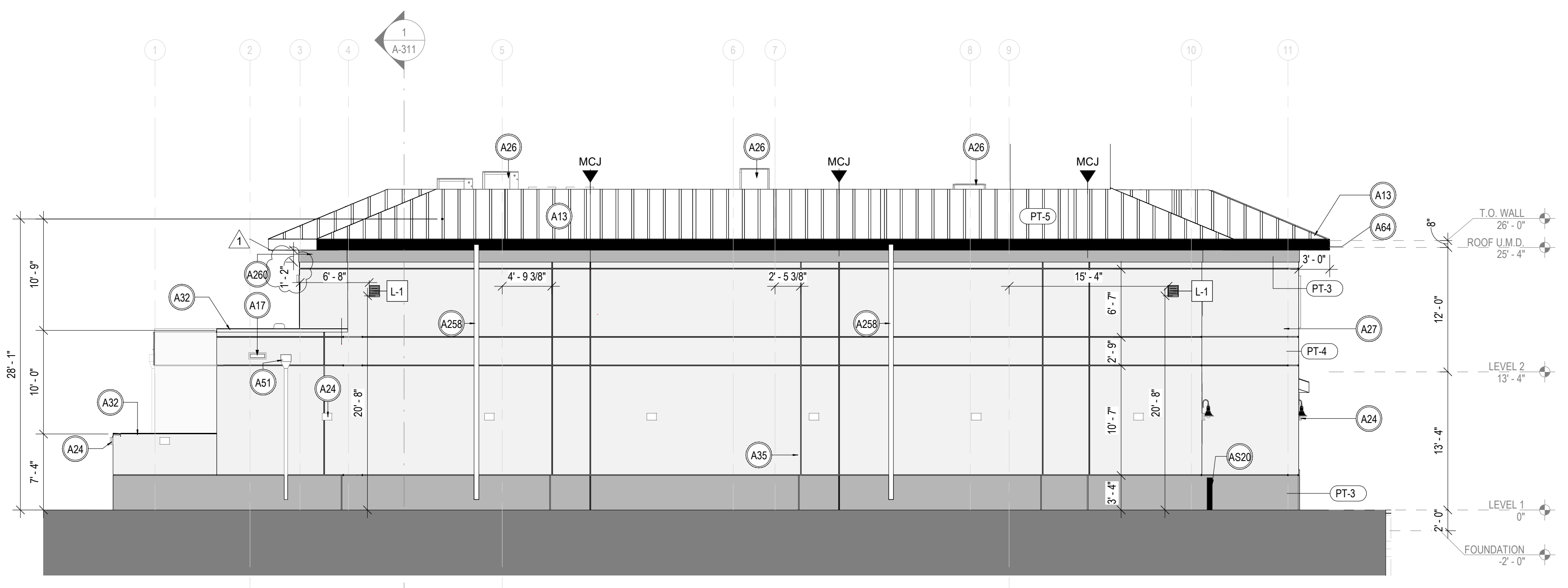
CG, CL, CH, ROI, I, MU, O 5 plus 1 additional element if parking is located at front of building
 CS, LI, HI, PIP 3 plus 1 additional element if parking is located at front of building
 RL, RM, RH, RGC 4 plus 1 additional element if parking is located at front of building

KEYNOTE	ARCHITECTURAL ELEMENT
A13	STANDING SEAM METAL ROOF.
A33	VERTICAL, RECTANGULAR WINDOWS - AT LEAST 50% OF WINDOW AREA ON FRONT BUILDING FACE.
A13	SLOPED PRIMARY ROOF WITH AN OVERHANG THAT IS AT LEAST 3 FEET.
A284	PORCH/PORTRICO
A35	EXPRESSION LINES THAT COVER AT LEAST 30% OF ONE SIDE OF A BUILDING FACE AREA (1/2" WIDE AND DEEP, MIN.)
A282	MEDALLIONS (ON FRONT AND AT LEAST ONE SIDE)



1 NORTH ELEVATION
1/8" = 1'-0"

*ST. LUCIE CITY DESIGN STANDARDS- SIDE FACADES THAT DO NOT FACE A STREET, DRIVEWAY, OR PARKING LOT DO NOT NEED TO MEET 20% TRANSPARENCY.



2 SOUTH ELEVATION
1/8" = 1'-0"

*ST. LUCIE CITY DESIGN STANDARDS- SIDE FACADES THAT DO NOT FACE A STREET, DRIVEWAY, OR PARKING LOT DO NOT NEED TO MEET 20% TRANSPARENCY.

Wannemacher Jensen Architects, Inc.
 132 Mirror Lake Drive N, Unit 301
 St. Petersburg, Florida 33701-3214
 (727) 822-5566
 www.wjaia.com
 AFR94244
 ©Wannemacher Jensen Architects, Inc.

THE PROJECT ARCHITECT HAS REVIEWED THE PERMITTED PLANS AND SPECIFICATIONS PROVIDED BY THE ARCHITECT. THE ARCHITECT HAS REVIEWED THE PERMITTED PLANS AND SPECIFICATIONS AND HAS NOTIFIED THE ARCHITECT OF ANY DISCREPANCIES WITHOUT FIRST OBTAINING THE ARCHITECT'S CONSENT TO PROCEED WITH THE CONSTRUCTION. THE ARCHITECT'S REVIEW IS LIMITED TO THE CONSTRUCTION DRAWINGS IN COMPLIANCE WITH THE PROFESSIONAL STANDARDS OF THE ARCHITECTURAL BOARD OF FLORIDA. THE ARCHITECT HAS REVIEWED THE PERMITTED PLANS AND SPECIFICATIONS AND HAS NOTIFIED THE ARCHITECT OF ANY DISCREPANCIES WITHOUT FIRST OBTAINING THE ARCHITECT'S CONSENT TO PROCEED WITH THE CONSTRUCTION.

ST. LUCIE MILNER DR. FIRE STATION
 ST. LUCIE COUNTY FIRE DISTRICT
 5160 NW MILNER DR. PORT ST. LUCIE, FL 34983

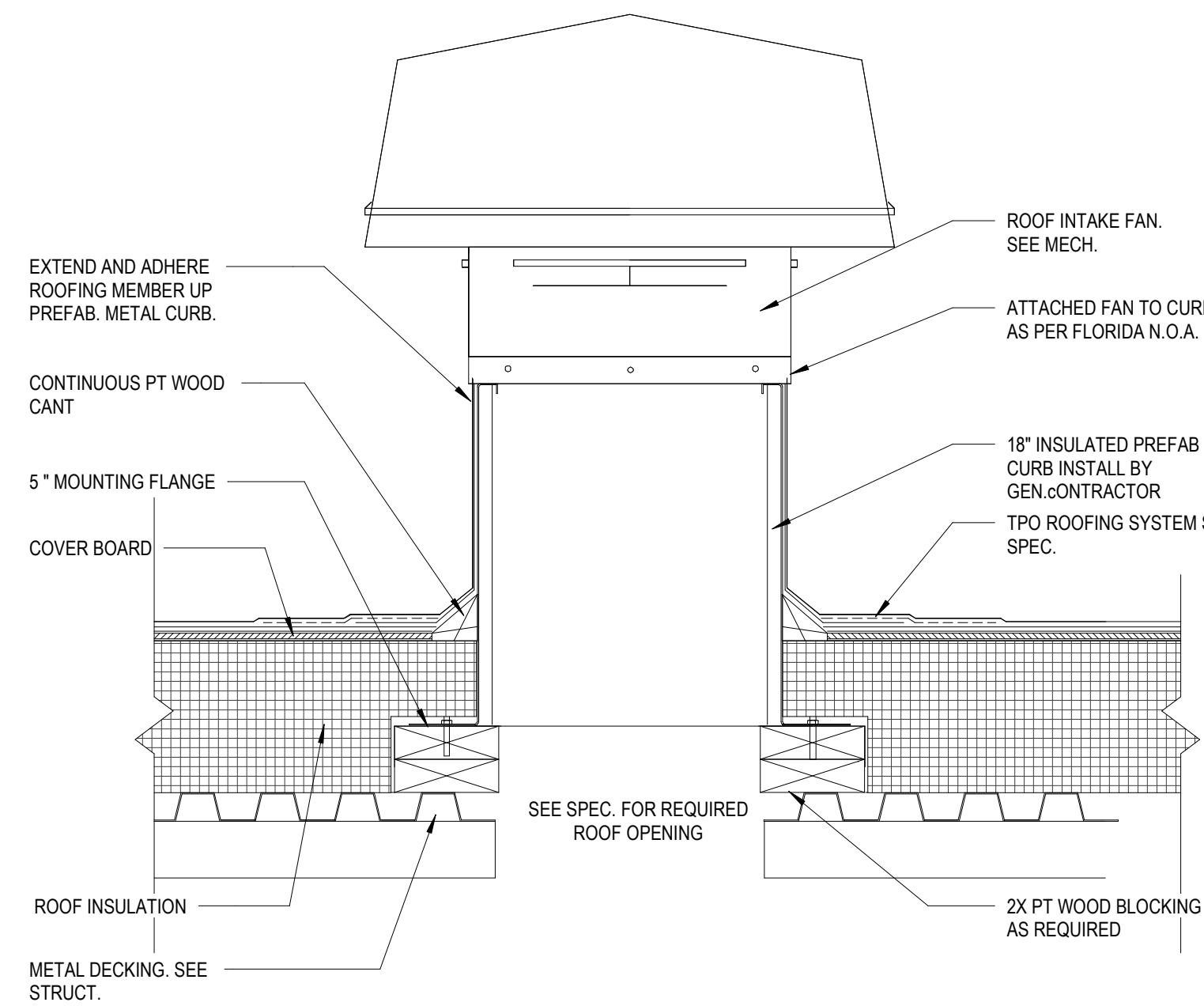
Project number
2241

DISTRIBUTION

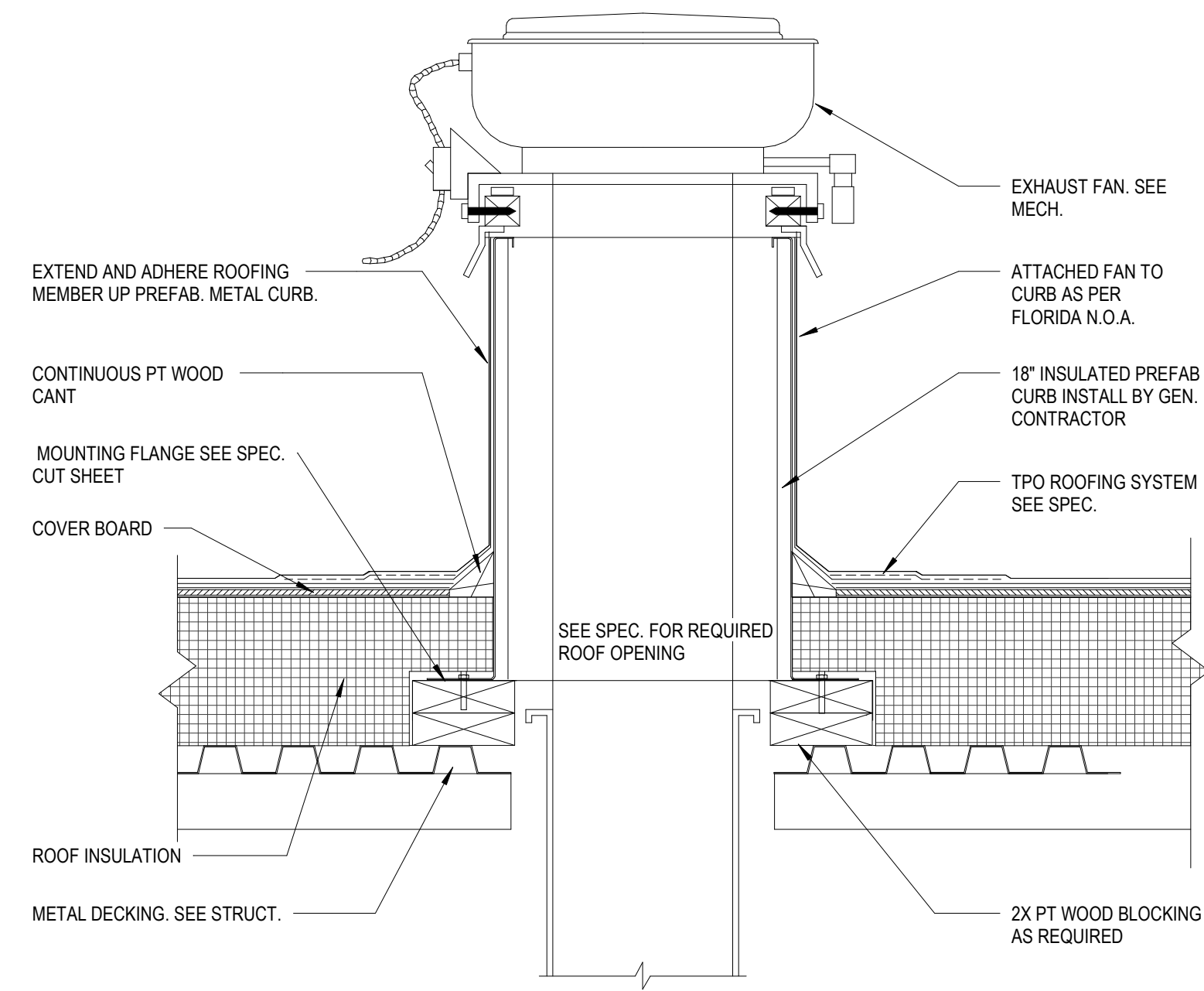
MILESTONE	DATE
PERMIT	4/13/23
REV 1	TBD

EXTERIOR ELEVATIONS

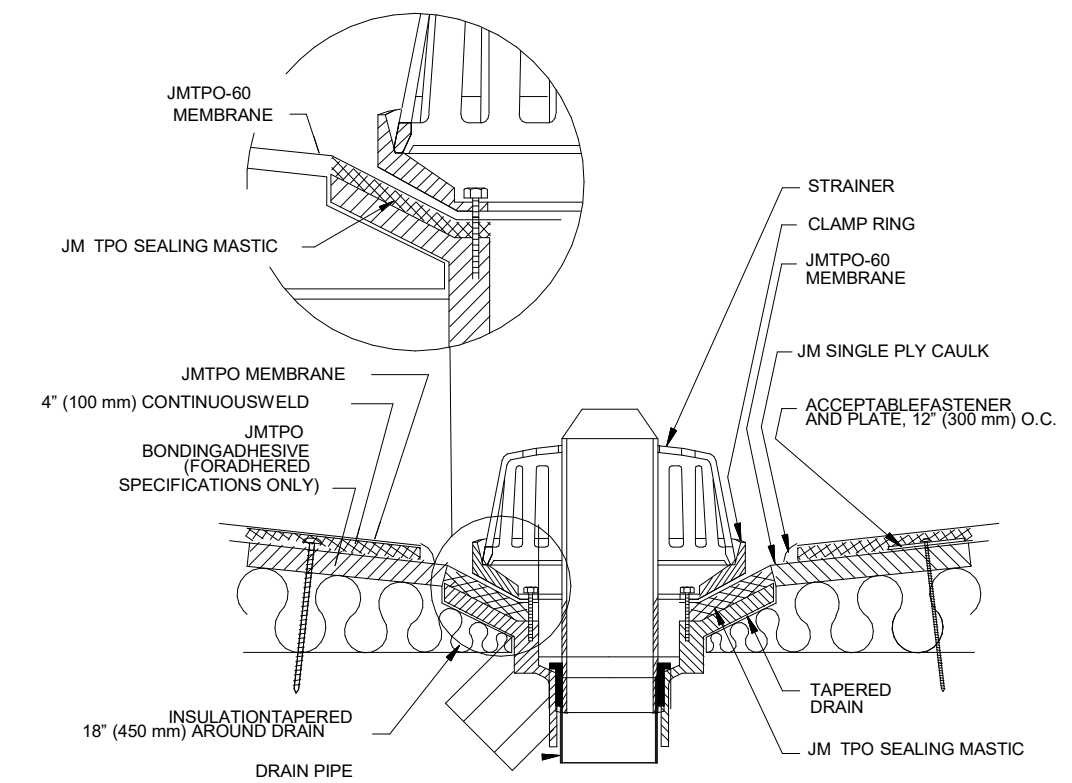
A-302



1 DETAIL - ROOF GRAVITY INTAKE
1 1/2" = 1'-0"

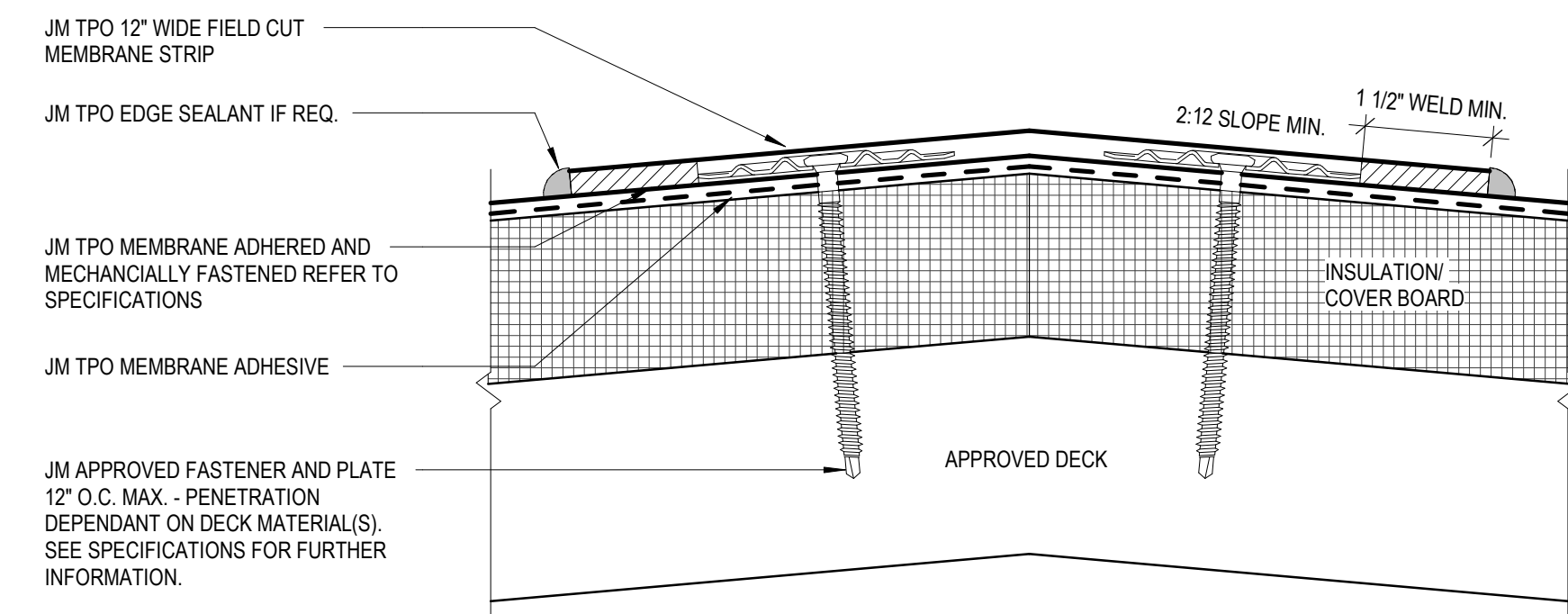


2 DETAIL - ROOF EXHAUST
1 1/2" = 1'-0"



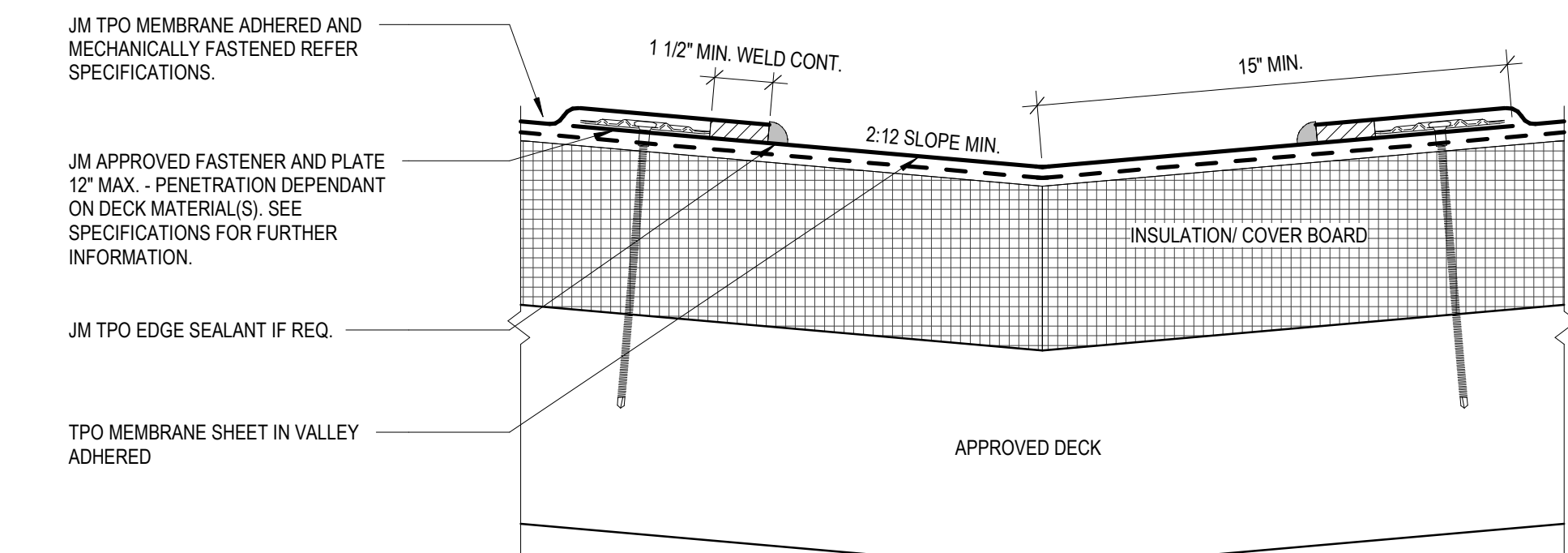
- NOTES:
1. DETAILS TO BE USED IN CONJUNCTION WITH GUIDE SPECIFICATIONS CONTAINING REQUIREMENTS FOR MALERS, INSULATION, ETC.
 2. JM SINGLE PLY CAULK IS USED TO SEAL THE MEMBRANE EDGES WHERE REINFORCING FABRIC IS CUT AND EXPOSED. EDGE SEALANT IS REQUIRED ON ALL END LAPS, JOINTS AND FIELD CUT EDGES.
 3. FIELD MEMBRANE SEAMS MUST NOT RUN THROUGH DRAIN BOWL.
 4. ALL MEMBRANE CUTS MUST BE ROUNDED TO PREVENT TEARING.
 5. REPLACE ANY BROKEN COMPONENTS (DRAINS, RINGS, BOLTS, ETC.)
 6. SUMP AREA MUST BE PROPERLY TAPERED SO THAT THE DRAIN FLASHING IS NOT INSTALLED UNDER TENSION.
 7. INSULATION MUST BE COMPATIBLE WITH JM TPO BONDING ADHESIVE.

3 DETAIL - ROOF DRAIN
1 1/2" = 1'-0"



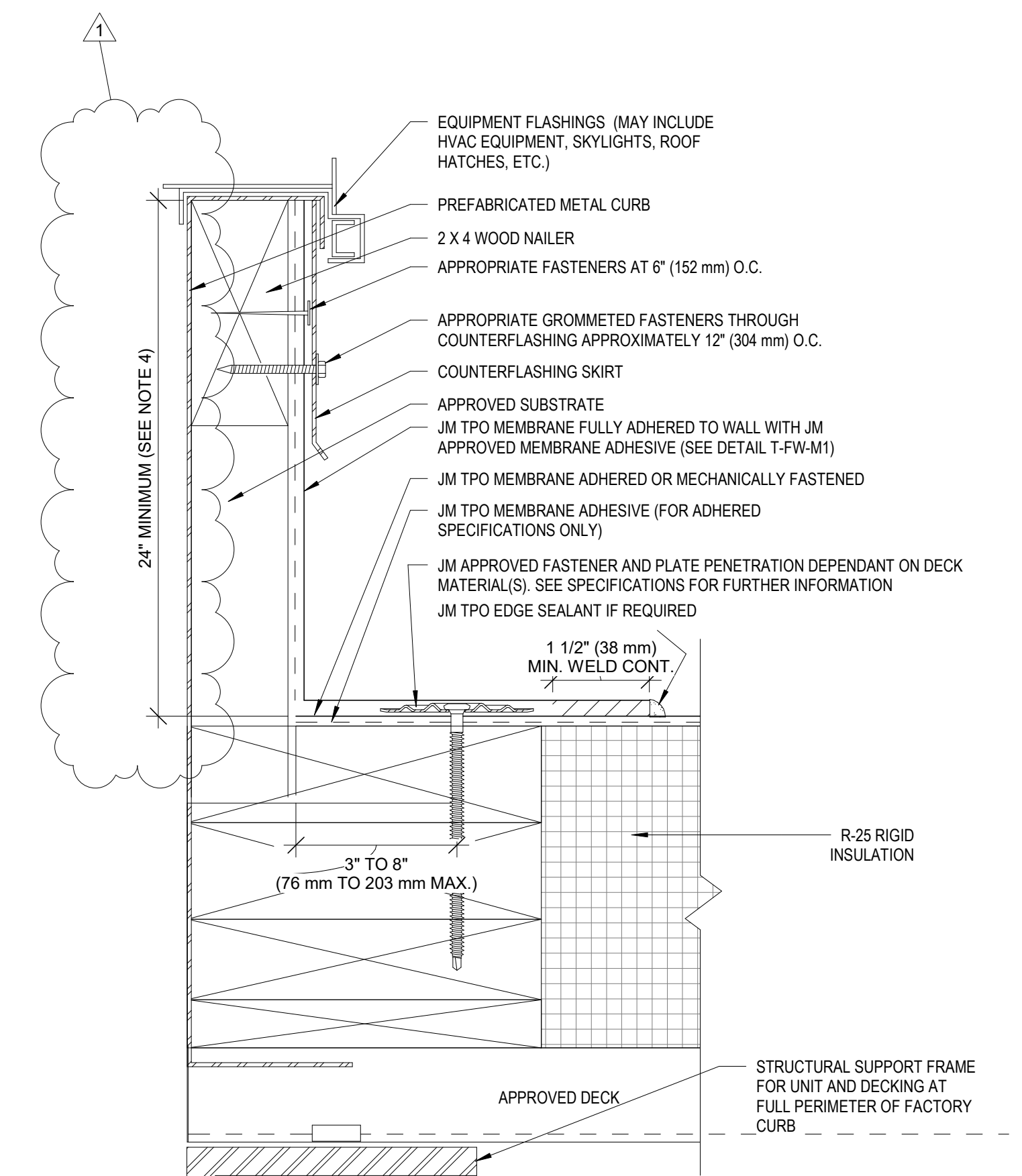
1. REFER TO JOHNS MANVILLE WEBSITE FOR MOST UP TO DATE INFORMATION.
2. PLEASE SEE SINGLE PLY FLASHING SPECIFICATIONS FOR A FULL DESCRIPTION OF INSTALLATION INSTRUCTIONS AND REQUIREMENTS WHICH ARE CONSIDERED A PART OF THIS DETAIL.
3. ANY CARPENTRY OR METAL WORK SHOULD BE DESIGNED AND CONSTRUCTED IN ACCORDANCE WITH LOCAL CODE REQUIREMENTS AND/OR PROJECT SPECIFICATIONS. THESE COMPONENTS SHOULD BE REVIEWED AND APPROVED BY A LICENSED DESIGN PROFESSIONAL.
4. JM TPO EDGE SEALANT IS REQUIRED ON ALL CUT OR NON-ENCAPSULATED EDGES OF REINFORCED MEMBRANE. THIS INCLUDES FACTORY CUT MEMBRANE.

4 DETAIL - ROOF RIDGE
3\"/>



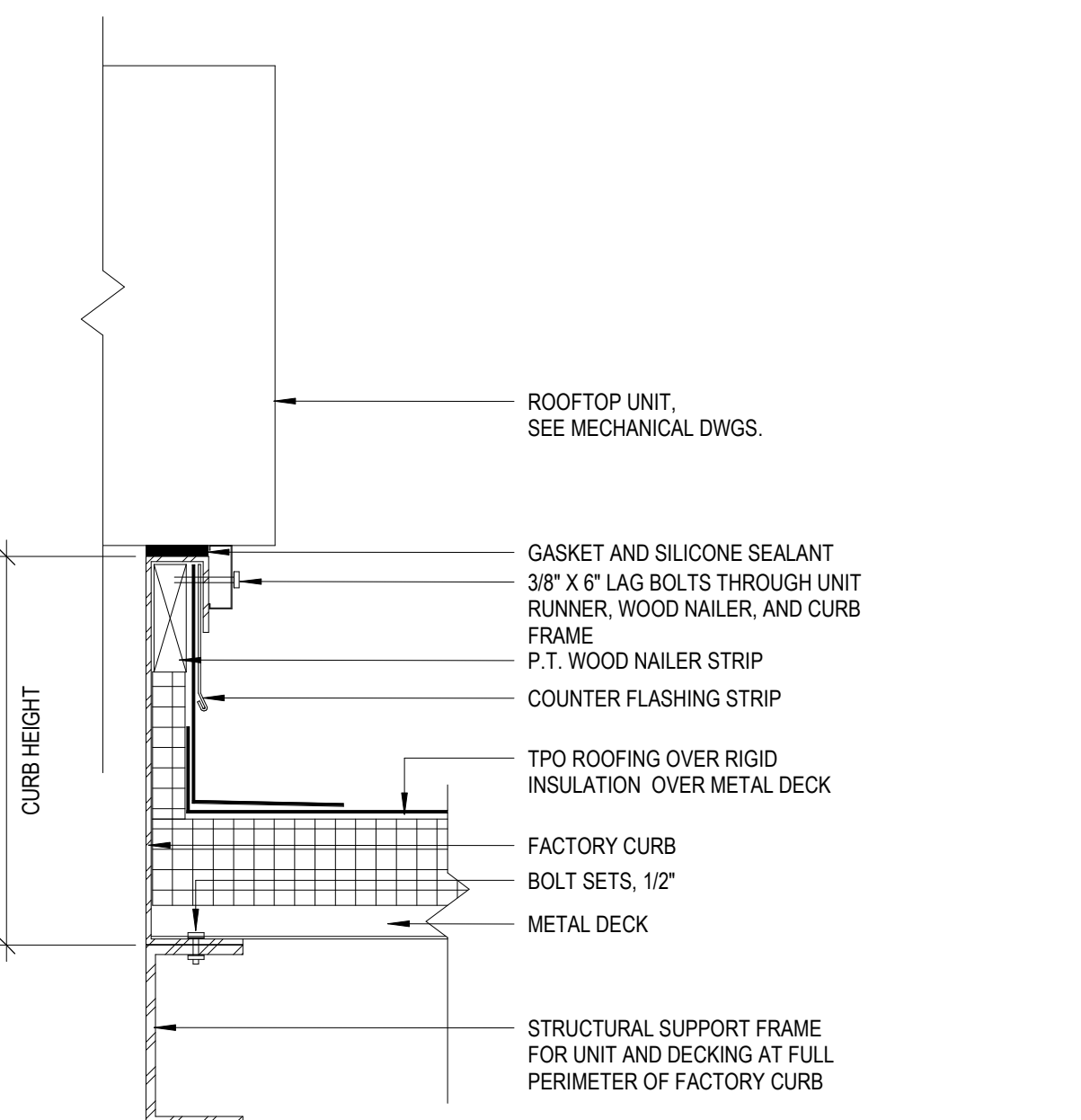
1. REFER TO JOHNS MANVILLE WEBSITE FOR MOST UP TO DATE INFORMATION.
2. PLEASE SEE SINGLE PLY FLASHING SPECIFICATIONS FOR A FULL DESCRIPTION OF INSTALLATION INSTRUCTIONS AND REQUIREMENTS WHICH ARE CONSIDERED A PART OF THIS DETAIL.
3. ANY CARPENTRY OR METAL WORK SHOULD BE DESIGNED AND CONSTRUCTED IN ACCORDANCE WITH LOCAL CODE REQUIREMENTS AND/OR PROJECT SPECIFICATIONS. THESE COMPONENTS SHOULD BE REVIEWED AND APPROVED BY A LICENSED DESIGN PROFESSIONAL.
4. JM TPO EDGE SEALANT IS REQUIRED ON ALL CUT OR NON-ENCAPSULATED EDGES OF REINFORCED MEMBRANE. THIS INCLUDES FACTORY CUT MEMBRANE.

5 DETAIL - ROOF VALLEY
3\"/>

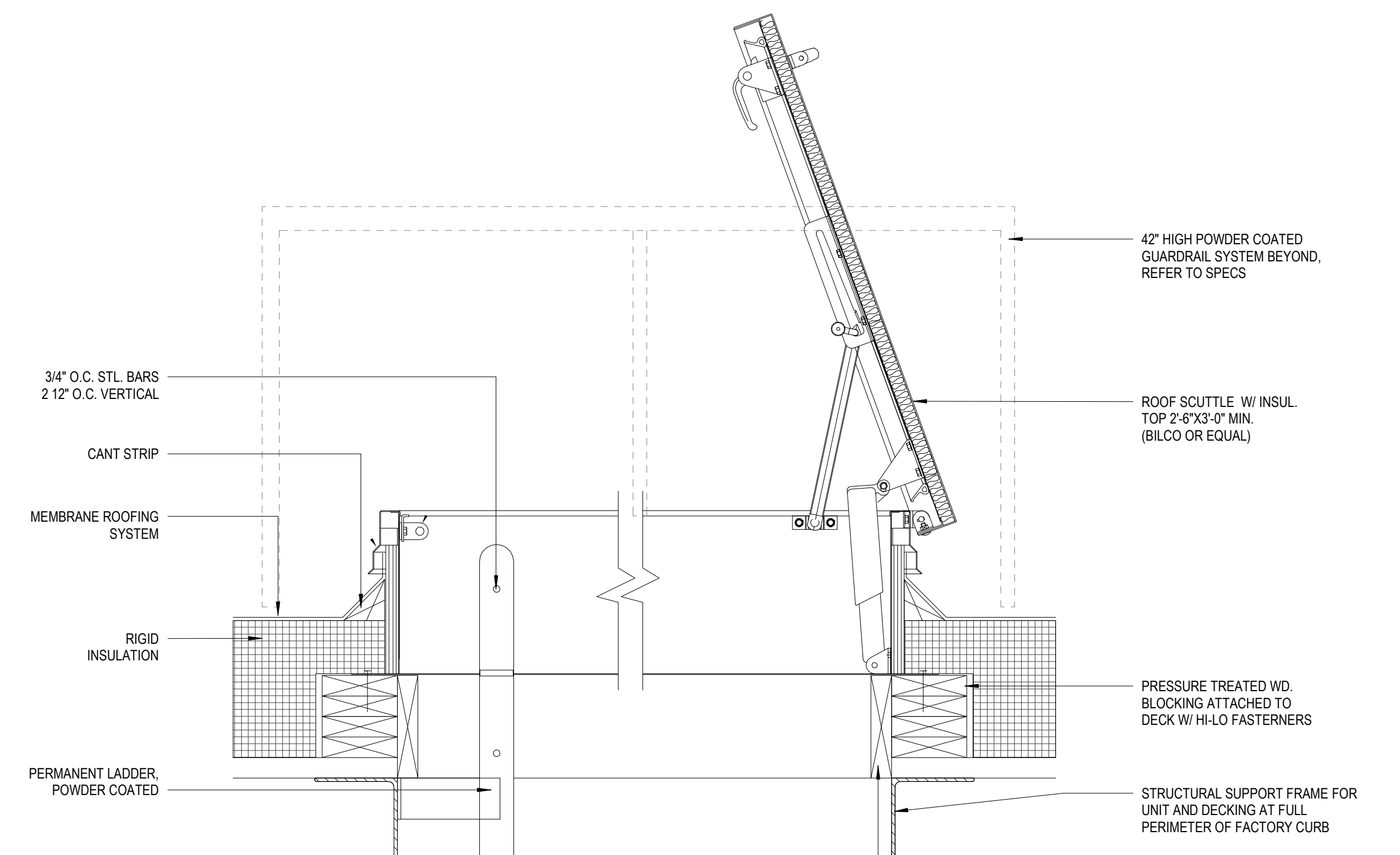


- NOTES:
1. REFER TO JOHNS MANVILLE WEBSITE (www.jm.com) FOR MOST UP-TO-DATE INFORMATION.
 2. PLEASE SEE SINGLE PLY FLASHING SPECIFICATIONS FOR A FULL DESCRIPTION OF INSTALLATION INSTRUCTIONS AND REQUIREMENTS WHICH ARE CONSIDERED A PART OF THIS DETAIL.
 3. ANY CARPENTRY OR METAL WORK SHOULD BE DESIGNED AND CONSTRUCTED IN ACCORDANCE WITH LOCAL CODE REQUIREMENTS AND/OR PROJECT SPECIFICATIONS. THESE COMPONENTS SHOULD BE REVIEWED AND APPROVED BY A LICENSED DESIGN PROFESSIONAL.
 4. HEIGHT OF CURB TO BE ADJUSTED WITH NAILERS. IT IS PREFERRED TO RAISE CURB ONTO NAILERS TO EXTEND FLASHING HEIGHT.
 5. TPO EDGE SEALANT IS REQUIRED ON ALL CUT AND NON ENCAPSULATED EDGES OF REINFORCED MEMBRANE. THIS INCLUDES FACTORY CUT MEMBRANE (SEE DETAIL T-MS-01).
 6. SEE T-FW-B DETAILS FOR JM APPROVED BASE FLASHING TIE IN TERMINATION METHODS.
- ***CONFORMS TO ST. LUCIE CITY DESIGN STANDARDS - 5.4.2 PARAPET HEIGHT REQUIREMENTS

8 PREFABRICATED METAL CURB BASE FLASHING
6\"/>



6 DETAIL - RTU CURB
1 1/2" = 1'-0"



7 DETAIL - ROOF HATCH
1 1/2" = 1'-0"

THE PROJECTS AND ARCHITECTURE OF WANNEMACHER JENSEN ARCHITECTS, INC. ARE THE PROPERTY OF WANNEMACHER JENSEN ARCHITECTS, INC. AND ARE NOT TO BE REPRODUCED OR TRANSMITTED IN ANY FORM OR BY ANY MEANS, ELECTRONIC OR MECHANICAL, INCLUDING PHOTOCOPYING, RECORDING, OR BY ANY INFORMATION STORAGE AND RETRIEVAL SYSTEM, WITHOUT THE WRITTEN PERMISSION OF WANNEMACHER JENSEN ARCHITECTS, INC. ANY UNAUTHORIZED USE OF THIS DOCUMENT IS PROHIBITED. THE ARCHITECTS OF THIS PROJECT HOLD THE TITLE OF REGISTERED PROFESSIONAL ARCHITECTS IN THE STATE OF FLORIDA. THIS DOCUMENT IS THE PROPERTY OF WANNEMACHER JENSEN ARCHITECTS, INC. AND IS NOT TO BE REPRODUCED OR TRANSMITTED IN ANY FORM OR BY ANY MEANS, ELECTRONIC OR MECHANICAL, INCLUDING PHOTOCOPYING, RECORDING, OR BY ANY INFORMATION STORAGE AND RETRIEVAL SYSTEM, WITHOUT THE WRITTEN PERMISSION OF WANNEMACHER JENSEN ARCHITECTS, INC. ANY UNAUTHORIZED USE OF THIS DOCUMENT IS PROHIBITED.

Project number
2241

DISTRIBUTION

MILESTONE	DATE
PERMIT	4/13/23
REV 1	TBD

ENCLOSURE DETAILS