

DESIGN ELEMENTS FROM TABLE 10.1 APPLIED:
2, 8, 20, 21, 22 AND 24

DESIGN ELEMENTS FROM TABLE 10.1 APPLIED:
20 AND 22

DESIGN ELEMENTS FROM TABLE 10.1 APPLIED:
18, 20, 21, 22 AND 24

DESIGN ELEMENTS FROM TABLE 10.1 APPLIED:
18, 20, 21 AND 22

DESIGN ELEMENTS FROM TABLE 10.1 APPLIED:
20 AND 22

DESIGN ELEMENTS FROM TABLE 10.1 APPLIED:
20 AND 22

EXTERIOR MATERIALS SCHEDULE

MARK	MATERIAL	MANUFACTURER	STYLE/COLOR	NOTES
DOOR FINISHES	D-2	ALUMINUM STOREFRONT DOOR & FRAME	KAWNEER COLOR: CLEAR ANODIZED ALUMINUM	INSTALL PER MFR RECOMMENDATIONS.
	D-3	PAINT FOR GALVANIZED HM DOOR & FRAME	BENJAMIN MOORE COLOR: OC-129 ALABASTER WHITE SHEEN: SEMI-GLOSS	FINISH PER MFR RECOMMENDATIONS. PRIMER: (1) COAT- BM SUPER SPEC HP ACRYLIC PRIMER #HP04 FINISH COAT: (2) COATS- BM SUPER SPEC HP D.T.M. ACRYLIC SEMI-GLOSS #HP29
	D-4	ALUMINUM AND GLASS OH DOORS	RAYNOR GARAGE DOOR ALUMAVIEW AV200, STYLE VIEW	INSTALL PER MFR RECOMMENDATIONS. RE: SPECS FOR ADDITIONAL INFO. *DOORS AT RACKING SHALL BE FIXED AND SECURE CONTACT DH PAGE: CHARLES GIRTMAN, MAVISDOORS@DHPAGE.COM, PH: 877-579-2333
MISC. ITEMS	F-3	METAL ROOF COPING	ROOF MFR MATCH ROOF SYSTEM COLOR: MATCH WALL BELOW	INSTALL PER MFR RECOMMENDATIONS.
	M-3	EIFS CORNICE & BAND	DRYVIT OR APPROVED EQUAL COLOR: #101 SUPER WHITE	INSTALL PER MFR RECOMMENDATIONS.
	M-4	PAINT FOR STEEL LINTELS & COLUMNS	BENJAMIN MOORE COLOR: OC-129 ALABASTER WHITE SHEEN: LOW LUSTRE	FINISH PER MFR RECOMMENDATIONS. PRIMER: (1) COAT- BM SUPER SPEC HP ACRYLIC PRIMER #HP04 FINISH COAT: (2) COATS- BM SUPER SPEC HP D.T.M. ACRYLIC LOW LUSTRE #HP25
	M-5	ALUMINUM GUTTERS & DOWNSPOUTS	-	COLOR: WHITE MILL FINISH INSTALL PER MFR RECOMMENDATIONS.
	M-6	PAINT FOR STANDING SEAM METAL SHED ROOF	-	COLOR: SW6473 (DARKER) SURF GREEN
	M-7	SCREEN PANEL	ENVISOR 7.2 RIB / BAND TRIM STYLE COLOR: CITYSCAPES 'ALABASTER'	INSTALL PER MFR RECOMMENDATIONS.
	WALL FINISHES	P-6	PAINTED STUCCO	SHERWIN WILLIAMS COLOR: SW6256 SERIOUS GRAY
P-7		PAINTED STUCCO	SHERWIN WILLIAMS COLOR: SW0050 LIGHT BUFF SHEEN: LOW LUSTRE	INSTALL PER MFR RECOMMENDATIONS.
P-8		PAINTED STUCCO	SHERWIN WILLIAMS COLOR: 6473 SURF GREEN SHEEN: LOW LUSTRE	INSTALL PER MFR RECOMMENDATIONS.
P-9		PAINTED STUCCO	SHERWIN WILLIAMS COLOR: 6472 COMPOSED SHEEN: LOW LUSTRE	INSTALL PER MFR RECOMMENDATIONS.
SF-1		ALUMINUM STOREFRONT SYSTEM	KAWNEER COLOR: CLEAR ANODIZED ALUMINUM	INSTALL PER MFR RECOMMENDATIONS. INSTALL WITH 1" LOW-E INSULATED GLAZING. MAX U-FACTOR: U-0.32 MAX SHGC: 0.40

GENERAL NOTES:
A. ALL FINISHES ON MATERIAL SCHEDULE MAY NOT BE USED
B. CENTER WALL LIGHTS OVER COLUMNS, DOORS & WINDOWS, ETC., AS SHOWN U.O.N.
C. MOUNTING HEIGHT OF EXTERIOR LIGHT FIXTURE ON REAR AND SIDE ELEVATIONS TO MATCH MOUNTING HEIGHT OF LIGHT FIXTURES ON FRONT ELEVATION
D. REFER TO SHEET A-800 FOR INFO REGARDING ILLUMINATED CHANNEL LETTER SIGNS.

EXTERIOR ELEVATION KEYNOTES

- 16"x16" INSULATED ALUMINUM ACCESS DOOR BY BEST ACCESS DOORS. SKU # BA-PAL-16-16. FINAL COLOR SELECTION TO BE APPROVED BY OWNER AND ARCHITECT. RE: DETAIL 7/A-502 FOR ADDITIONAL INFO. (ACCESS DOOR IS FOR USE TO ACCESS OIL TANKS. COORDINATE FINAL LOCATION WITH TANK INSTALLER)
- PROVIDE KEY DROP SLOT IN GARAGE ENTRY DOOR. FINAL INSTALLATION LOCATION TO BE DIRECTED BY MAVIS.
- FREESTANDING AIR INFLATOR. LOCATION TO BE SITE SPECIFIC. (RE: RESPONSIBILITY SCHEDULE FOR ADDITIONAL INFO.)
- PROVIDE KNOX BOX WHERE REQUIRED BY JURISDICTION (PURCHASED FROM LOCAL FIRE DEPARTMENT). MOUNT PER FIRE DEPARTMENT REQUIREMENTS ON WALL ADJACENT TO ENTRANCE. CONTRACTOR TO MAKE APPLICATION FOR KNOX BOX AND COORDINATE WITH LOCAL APPROVING AUTHORITY.
- EXPANSION JOIN MATERIAL COLOR TO MATCH ADJACENT FINISH COLOR.
- EXTERIOR WALL PACK LIGHT. RE: ELECTRICAL DRAWINGS.

ONLY ONE SIGN ALLOWED.
SIGNAGE SHOWN AS IF VARIANCE FOR SIGNS ON SIDE ELEVATIONS ARE APPROVED

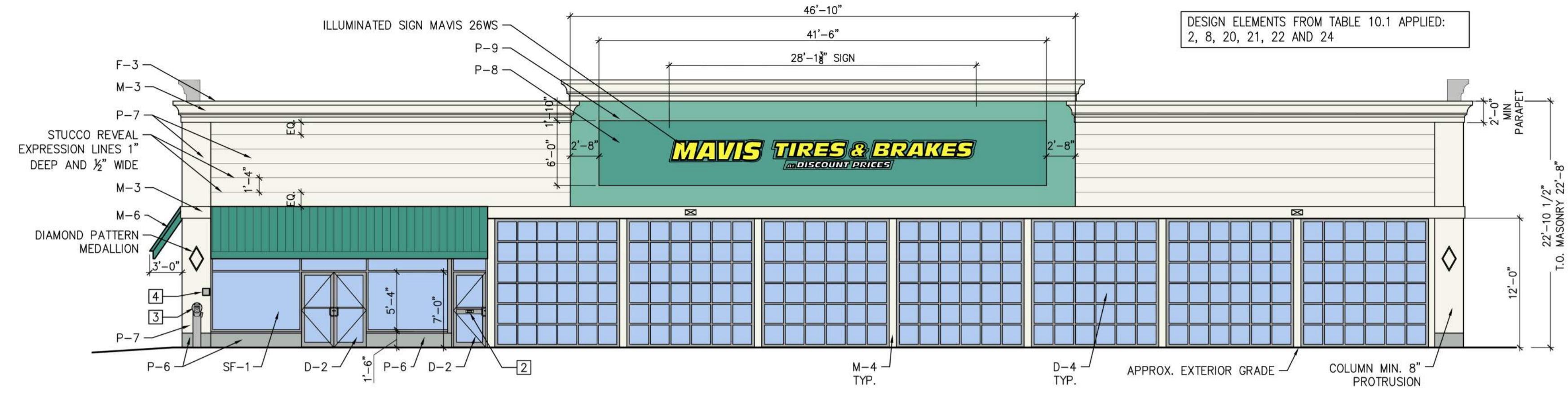
- ALLOWED 100% - SW6472 COMPOSED (SHOWN AS OUTERMOST BORDER AROUND WALL SIGN)
- ALLOWED 20% - SW6473 SURF GREEN (SHOWN AS BACKGROUND BEHIND WALL SIGN AND COLOR OF SHED ROOF)
- ALLOWED 100% - SW0050 LIGHT BUFF (SHOWN AS MAIN BUILDING COLOR)
- ALLOWED 20% - SW6256 SERIOUS GRAY (SHOWN AS BUILDING BASE)

DESIGN ELEMENTS FROM ZONING TABLE 10.1 USED:

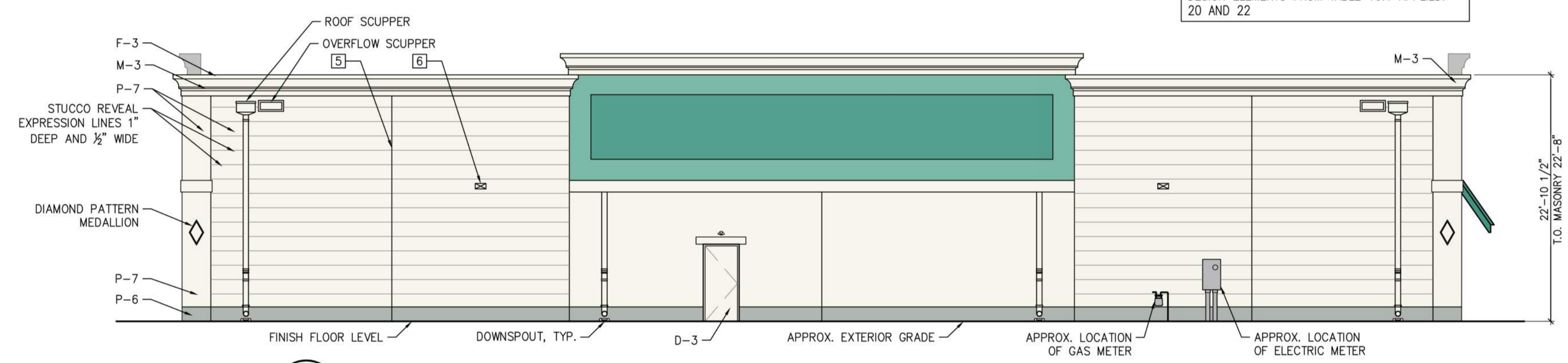
- 2 - VERTICAL RECTANGULAR WINDOWS
- 18 - CANOPY / AWNING
- 20 - EXPRESSION LINES THAT COVER AT LEAST 30% OF A BUILDING FACE AREA (4" WIDE AND DEEP, MIN.)
- 21 - RAISED CORNICE OVER DOORS AND/OR WINDOWS
- 22 - MEDALLIONS (ON FRONT AND AT LEAST ONE SIDE)
- 23 - DISPLAY WINDOWS

PLANNING AND ZONING NOTES

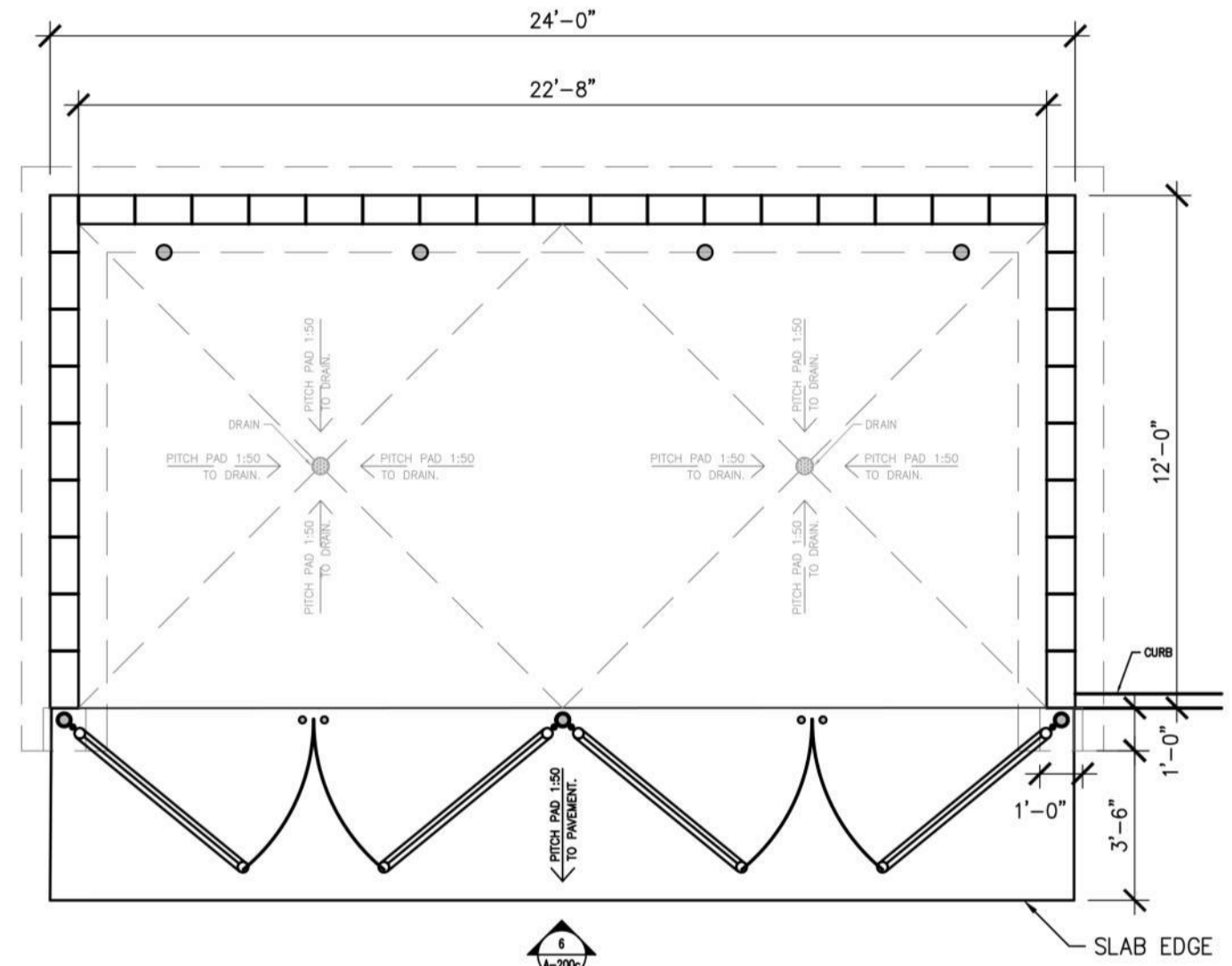
- NO MECHANICAL EQUIPMENT SHALL BE VISIBLE FROM ABOVE THE HEIGHT OF THE PARAPET WALL.
- THE ELEVATION DESIGN AND COLORS MAY NOT BE MODIFIED WITHOUT APPROVAL FROM THE CITY.



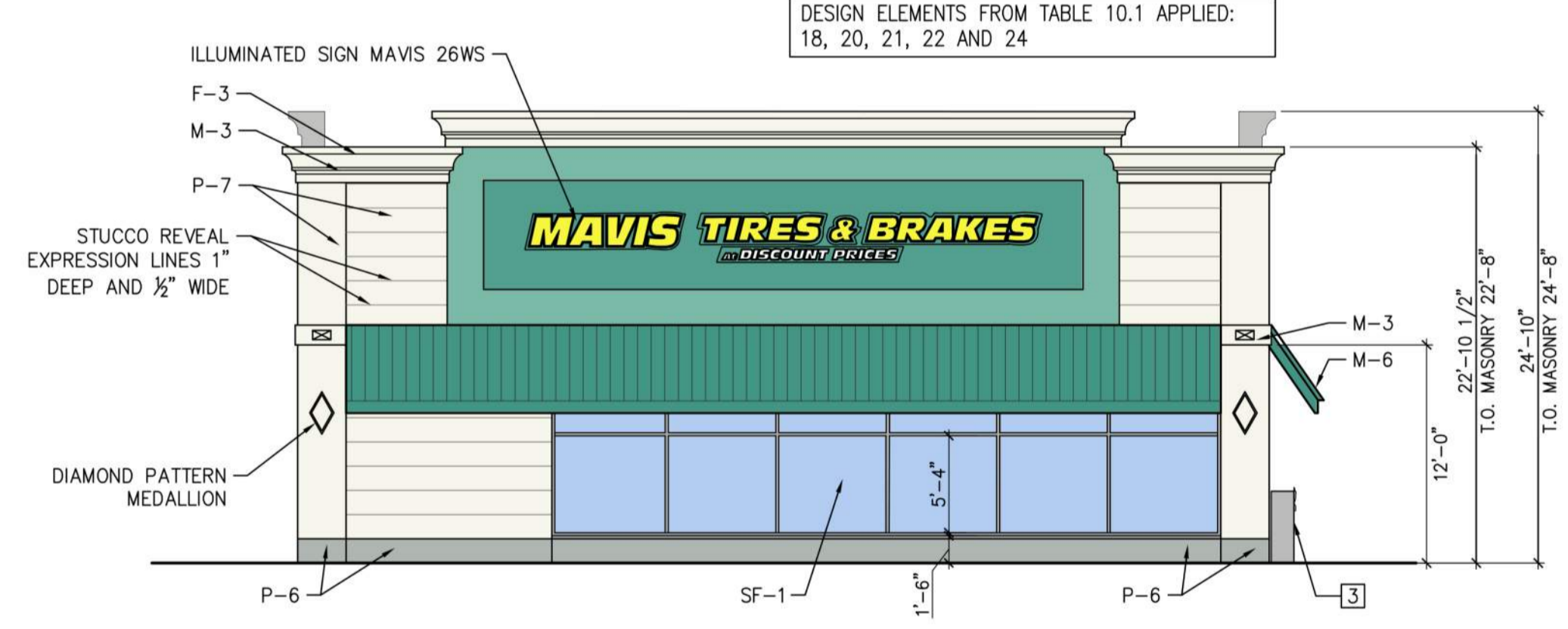
1 FRONT ELEVATION (FACES ENTRY ROAD INTO MALL)
A-200c SCALE: 1/8" = 1'-0"



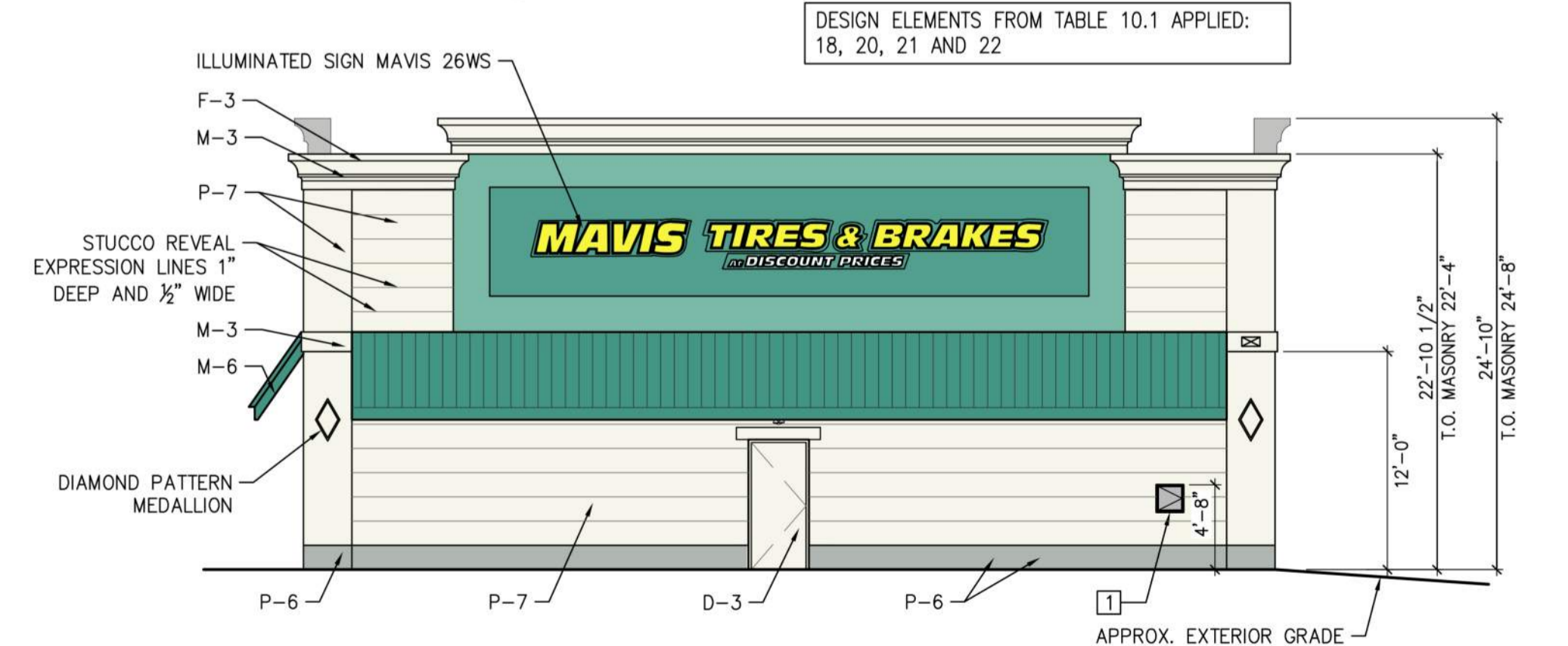
2 REAR ELEVATION (FACES ADJACENT TENANT)
A-200c SCALE: 1/8" = 1'-0"



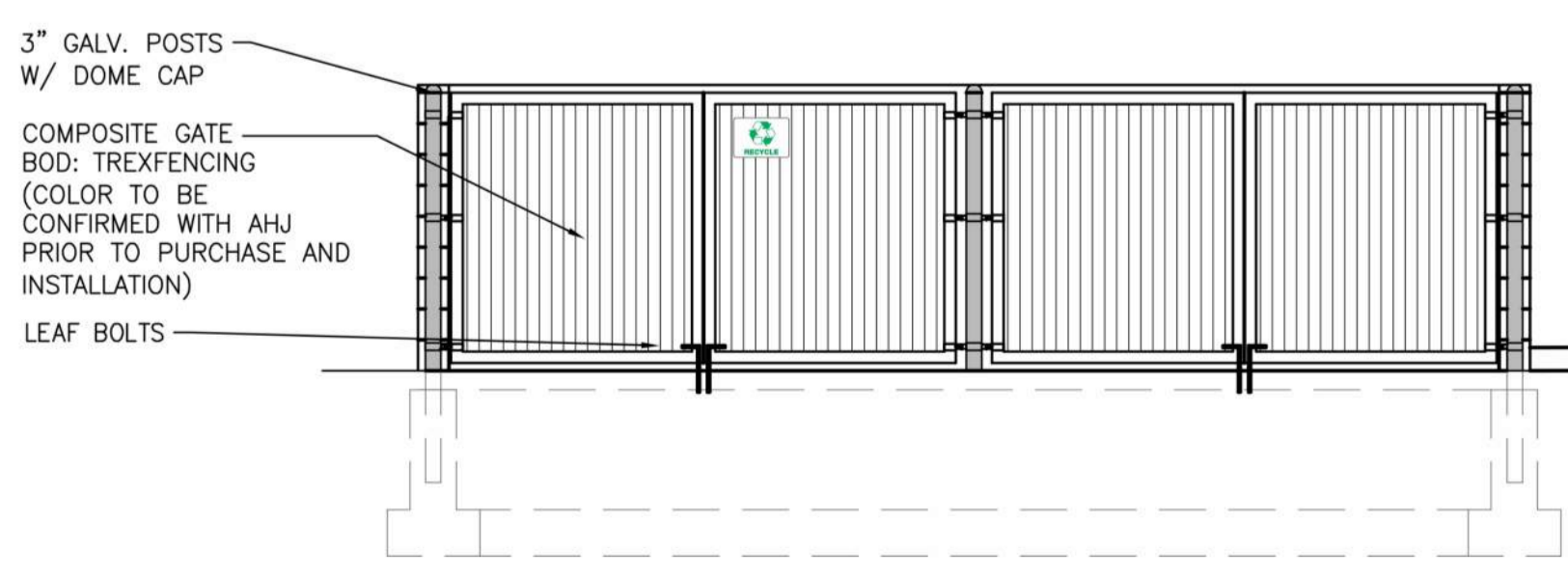
5 DUMPSTER ENCLOSURE PLAN
A-200c SCALE: 1/4" = 1'-0"



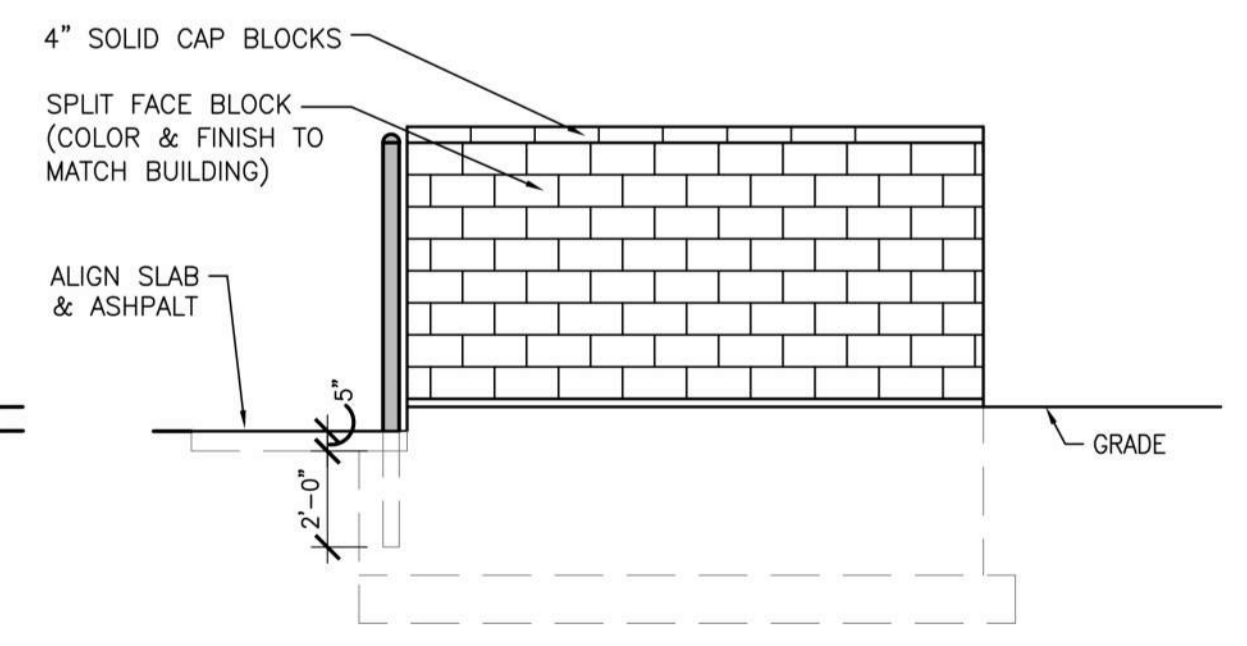
3 SIDE ELEVATION (SHOWROOM FACING MALL)
A-200c SCALE: 1/8" = 1'-0"



4 SIDE ELEVATION (FACING DARWIN BOULEVARD)
A-200c SCALE: 1/8" = 1'-0"



6 FRONT ELEVATION
A-200c SCALE: 1/4" = 1'-0"



7 SIDE ELEVATIONS (REAR SIMILAR)
A-200c SCALE: 1/4" = 1'-0"



1791 Freedom Drive #120
Port St. Lucie, FL 34959
888.448.0006
rdc@rdcgroup.com

MAVIS TIRE SUPPLY, LLC
388 SAW MILL RIVER ROAD
MILLWOOD, NY 10546
(914) 984-2500

MARK	DATE	PROGRESS SET	COMMENTS
	09/05/2024		



MAVIS TIRES & BRAKES #2216 - PORT ST. LUCIE, FL
3209 SW DARWIN BOULEVARD, PORT ST. LUCIE, FL 34953

EXTERIOR ELEVATIONS - COLORED

Project No.: #2216
Sheet No.:

A-200c