



# Council Meeting #1

November 16, 2020

PREPARED BY

**MARLIN**



# Project Team



**MARLIN**



Cotleur &  
Hearing

*Firefly*  
public relations & marketing

village  
GREEN DR  
PORT ST. LUCIE



# Today's Updates

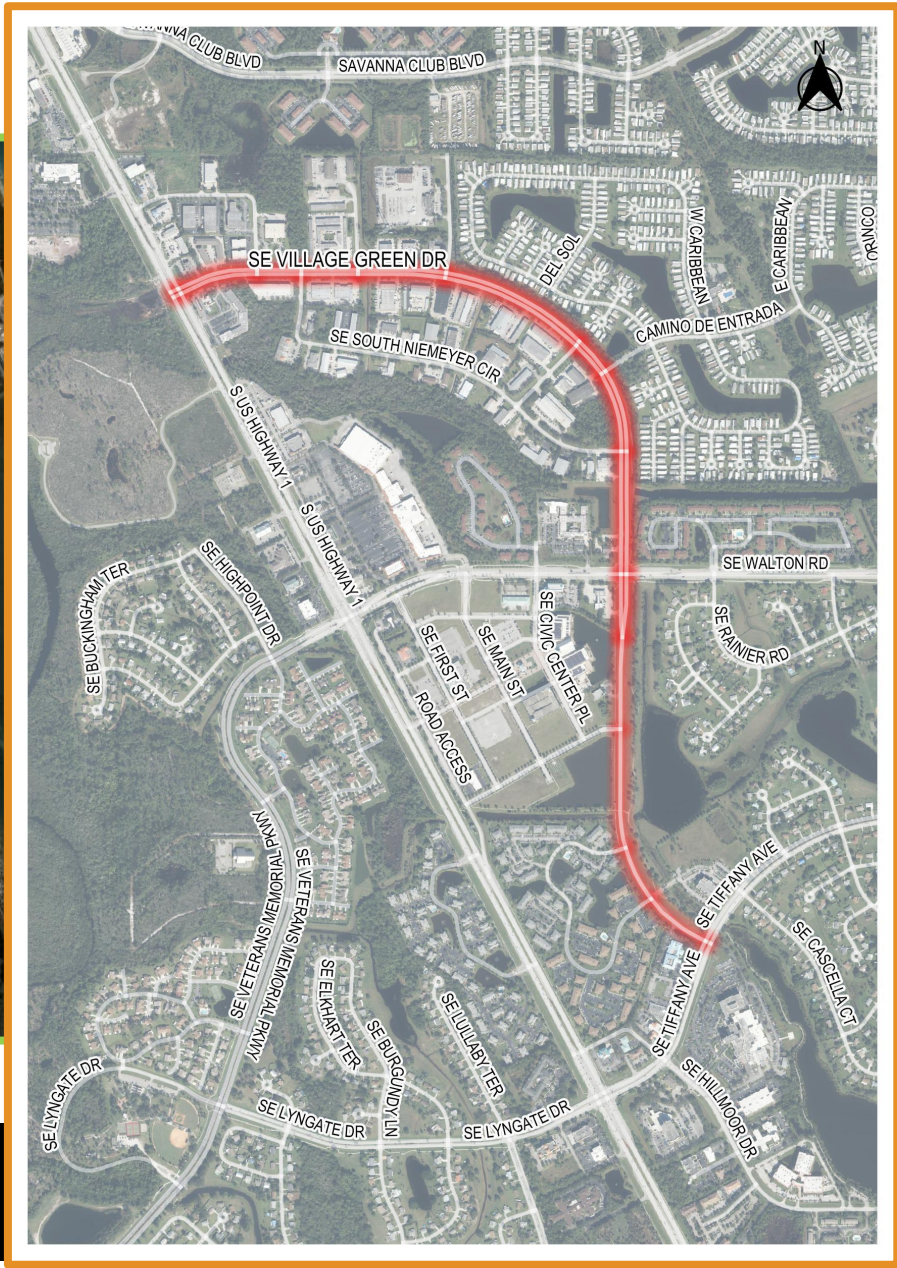
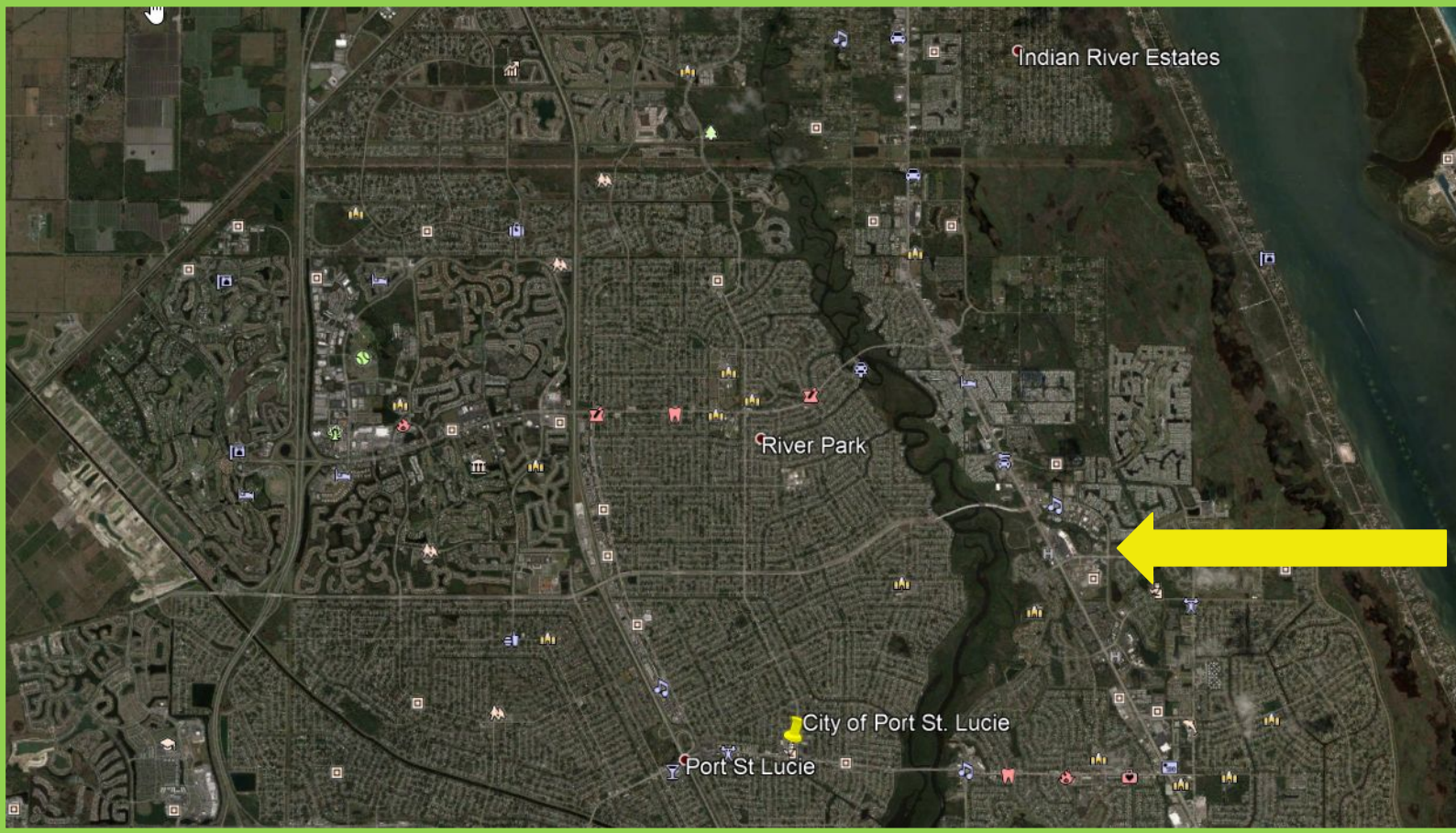
- Project Overview
- Data Collection
- Public & Stakeholder Involvement
- Next Steps





# Project Overview





# Project Location



# Project Tasks

## **Task 1: Meetings, Coordination, & Public Involvement**

- Business Canvassing Day - September 10, 2020
- Walking Audit - October 1, 2020
- 1st Public Meeting - October 8, 2020
- Stakeholder Meeting - December 3, 2020
- 2nd Public Meeting - February 18, 2021

## **Task 2: Data Collection & Analysis**

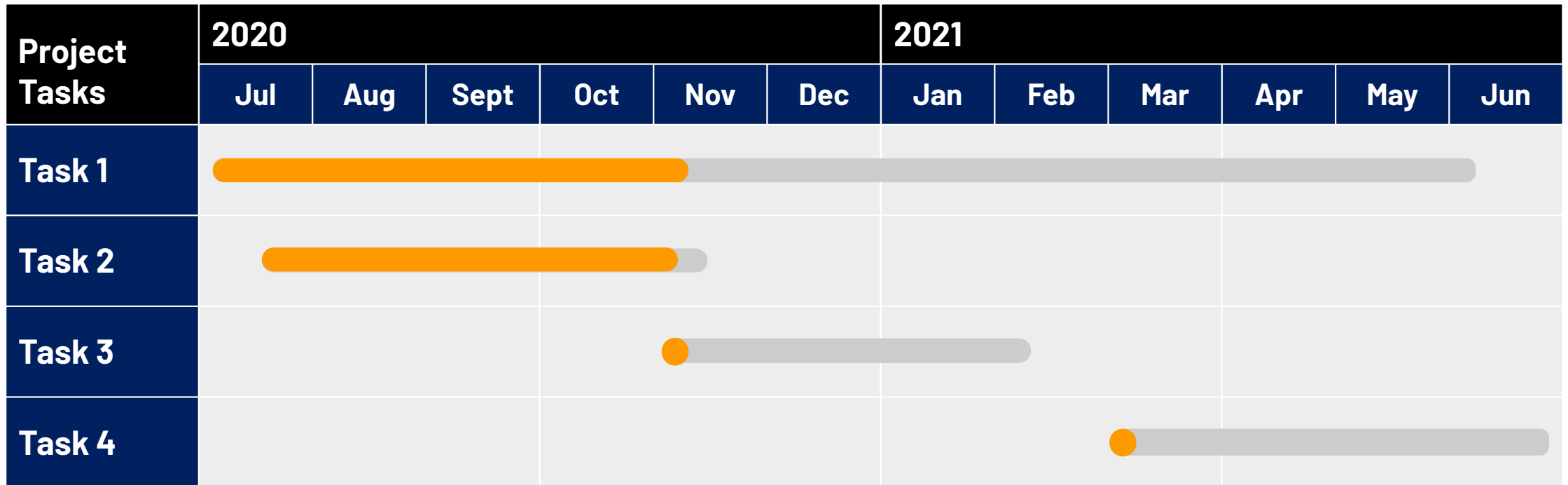
- Review of Plans, Documents, and Codes
- Field Inventory & Review
- Traffic, Pedestrian, & Bicycle Data Collection
- Analysis

## **Task 3: Design Concepts**

## **Task 4: Final Master Plan**

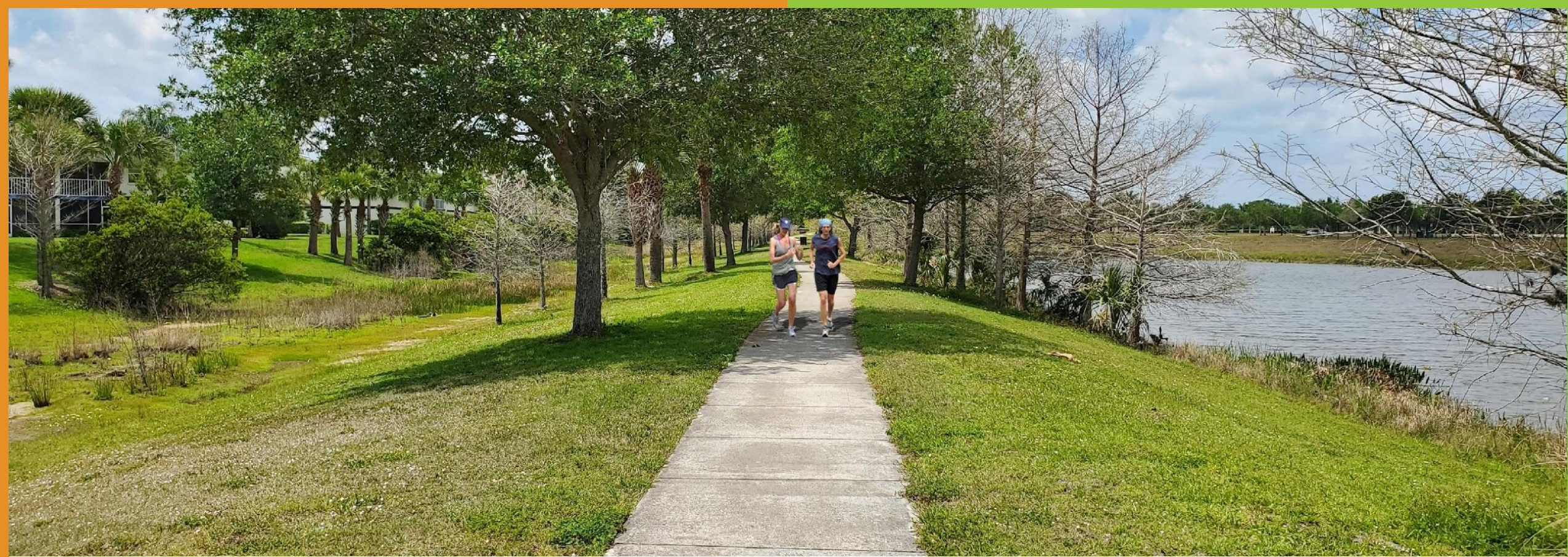


# Project Schedule



TODAY ▲





# Data Collection



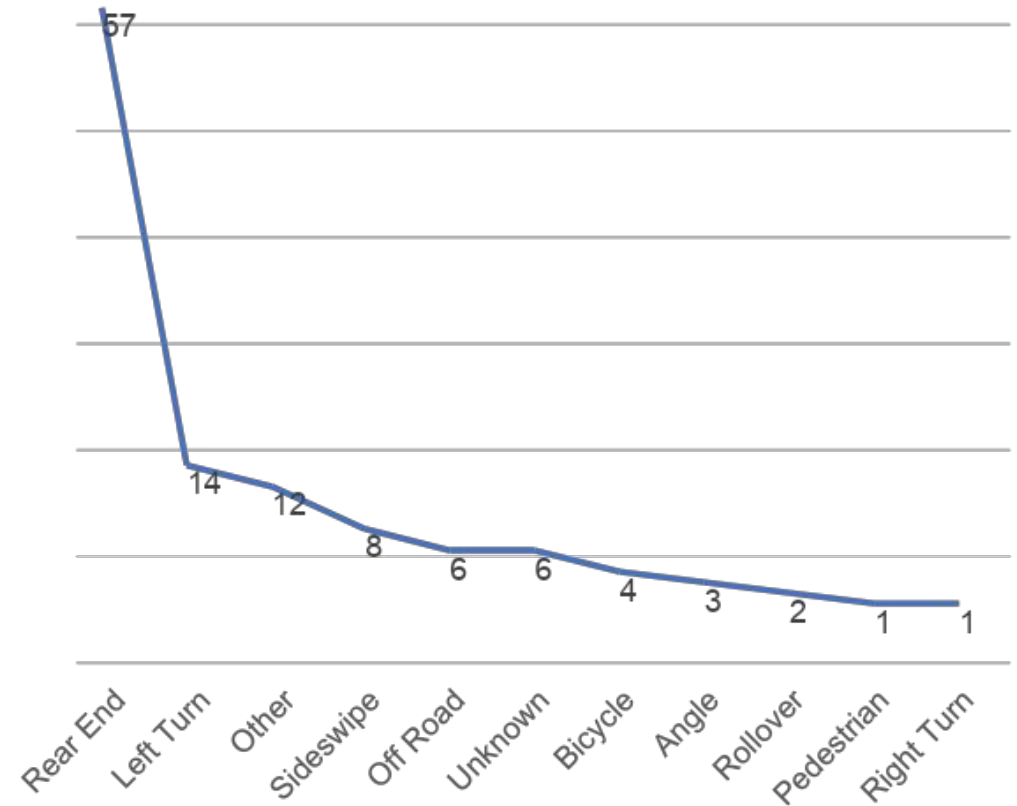
# Traffic Conditions

Segment	Lanes*	Average Daily Traffic (ADT)	Maximum ADT	Average Speed Posted Speed = 30 mph
W of South Niemeyer Cir	4 LD	12,709	13,700	35 mph
W of Industrial Blvd	4 LD	10,883	13,100	35 mph
S of Niemeyer Cir	4 LD	11,311	11,600	39 mph
S of Walton Rd	2 L	3,877	6,900	42 mph
N of SE Tiffany Ave	2 L	4,138	6,900	35 mph

\*L - Lane, LD - Lane Divided

# Corridor Collisions (2015-2019)

- 114 Crashes
- Peak hour for crashes is 4 - 5 PM
- 25% of crashes have resulted in injury
- Rear end crashes are most common
- No fatalities



Source: Signal 4 Analytics



# Turning Movement Counts

## U.S. 1 & Village Green

- Total Vehicles: 26,708
- Trucks: 470
- Buses: 167
- Bikes: 31
- Peds: 11

## Walton & Village Green

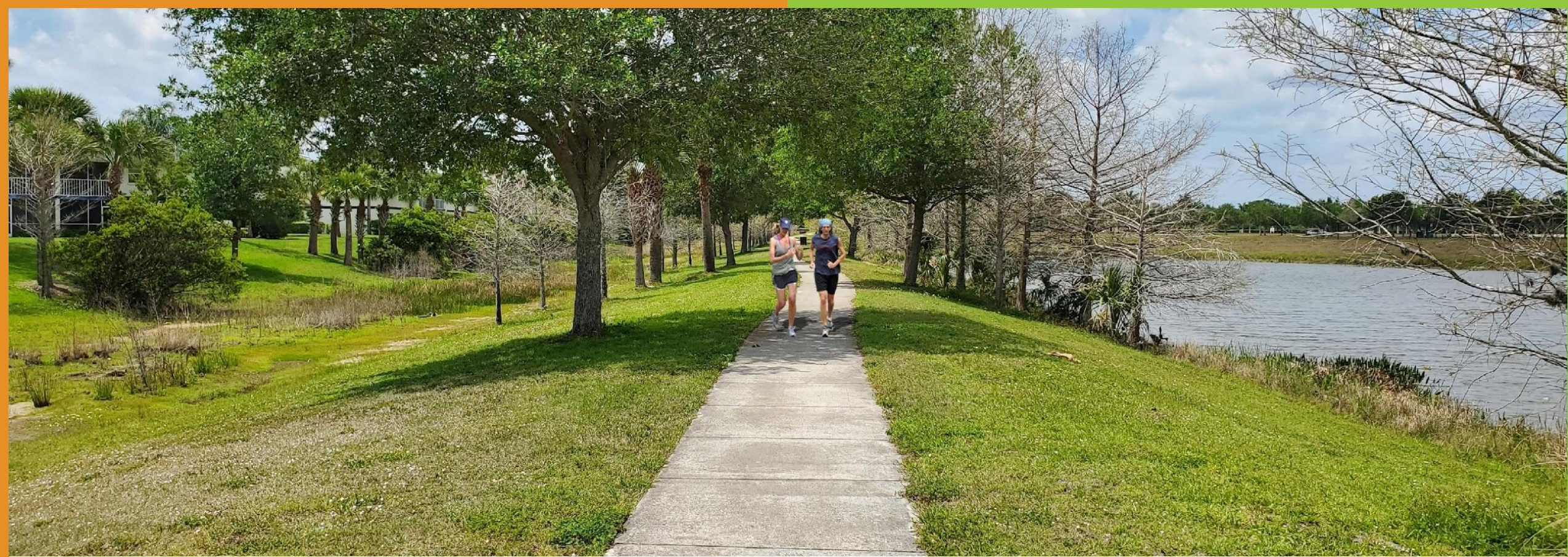
- Total Vehicles: 8,431
- Trucks: 194
- Buses: 111
- Bikes: 13
- Peds: 21

## Tiffany & Village Green

- Total Vehicles: 3,346
- Trucks: 44
- Buses: 52
- Bikes: 6
- Peds: 29

Numbers represent totals between 7 – 9 AM, 11 AM – 1 PM, and 4 – 6 PM





# Public & Stakeholder Involvement



# Outreach

- Project website  
[www.cityofpsl.com/villagegreen](http://www.cityofpsl.com/villagegreen)
- Flyer
- Social Media
- E-Blasts
- Online Survey

## VILLAGE GREEN DRIVE

Corridor Revitalization Project



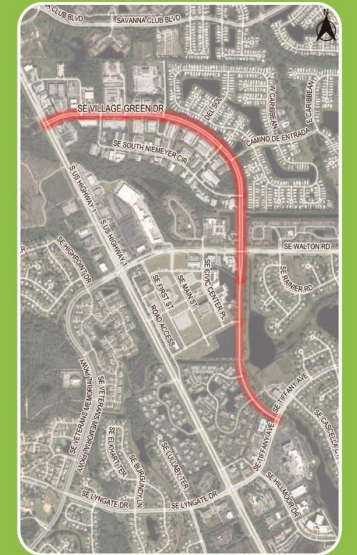
### Purpose

The Village Green Drive Corridor Revitalization Project is at the heart of eastern Port St. Lucie's long-awaited renaissance and vision for a "new, old downtown." Improvements to Village Green Drive and surrounding areas will improve connectivity, accessibility and aesthetics between Crosstown Parkway and the key economic, community, and healthcare hubs along this corridor.

### Village Green Drive Master Plan

The first step in determining the best opportunities for improving the corridor is to develop a Village Green Drive Master Plan. Current conditions will be examined and then various conceptual design solutions for the corridor will be presented. Recommendations will include multimodal improvements, public art, and landscape treatments.

### Location



The Village Green Drive Corridor is located along the east side of U.S. 1, between the terminus of Crosstown Parkway and SE Tiffany Avenue.



Contact Us: Jennifer Davis, CRA Project Manager, City of Port St. Lucie  
JDavis@cityofpsl.com | 772-344-4342 | [www.cityofpsl.com/villagegreen](http://www.cityofpsl.com/villagegreen)





# Business Outreach

## Business Canvassing Event

Thursday, September 10, 2020

- Visited over **60 businesses**
- Feedback & Comments
  - Concerns about Lengthy Road Closures due to Construction
  - Create Brand for Area for Recognition
  - Sidewalks Welcomed
  - Niemeyer Circle – Cut Through Traffic
  - Walking Path through Hogpen Slough





# Field Assessment

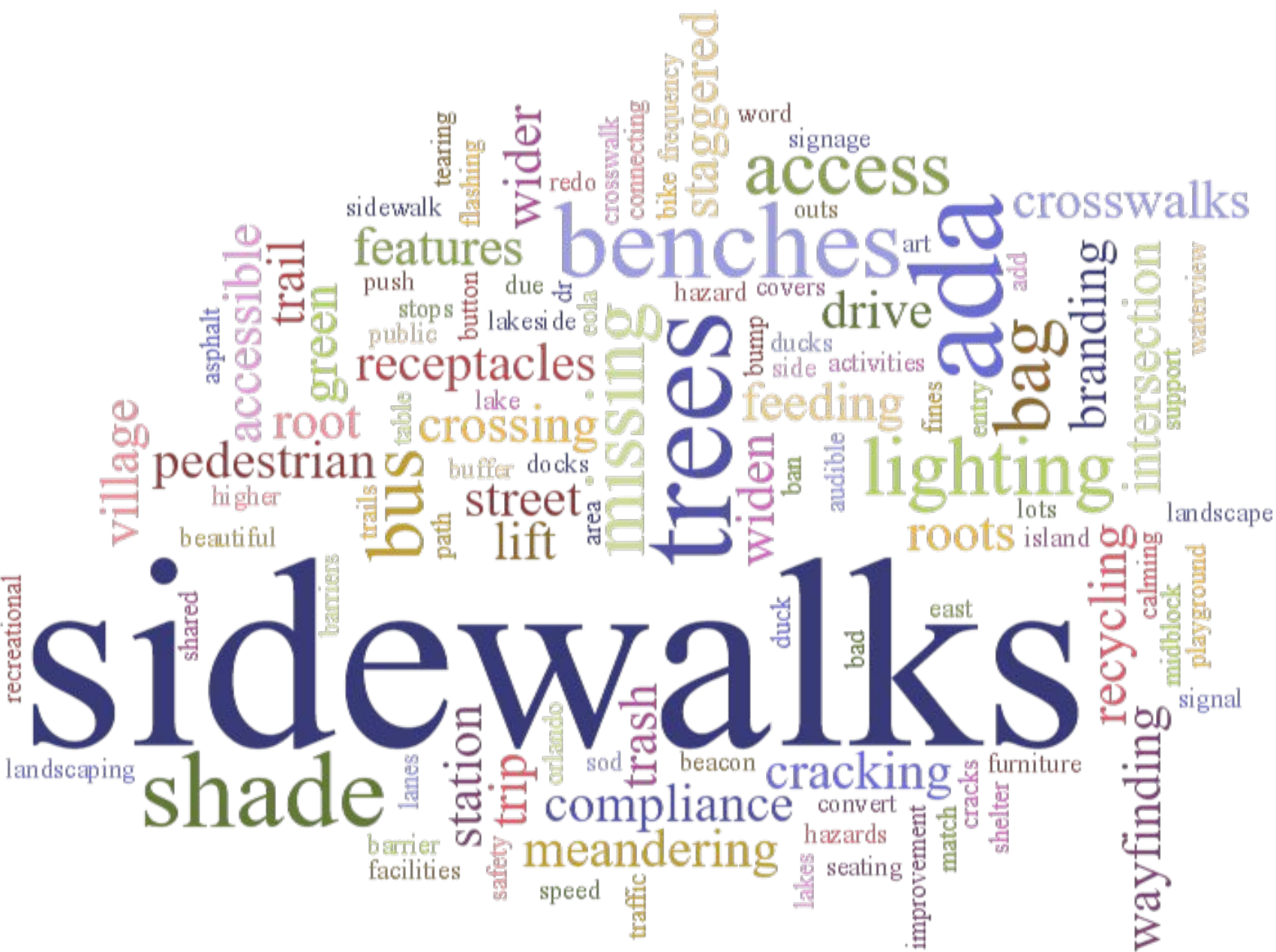
## Walking Audit

Thursday, October 1, 2020

- Project Partners (27 Attendees)
  - PSL CRA
  - PSL Planning & Zoning
  - PSL Utilities
  - PSL Parks & Recreation
  - PSL Public Works
  - PSL Neighborhood Services
  - PSL Economic Development
  - **TPO**
  - **County School District**
    - MARLIN, Firefly, & Cotleur & Hearing
- Survey & Comments Collected







# Public Involvement

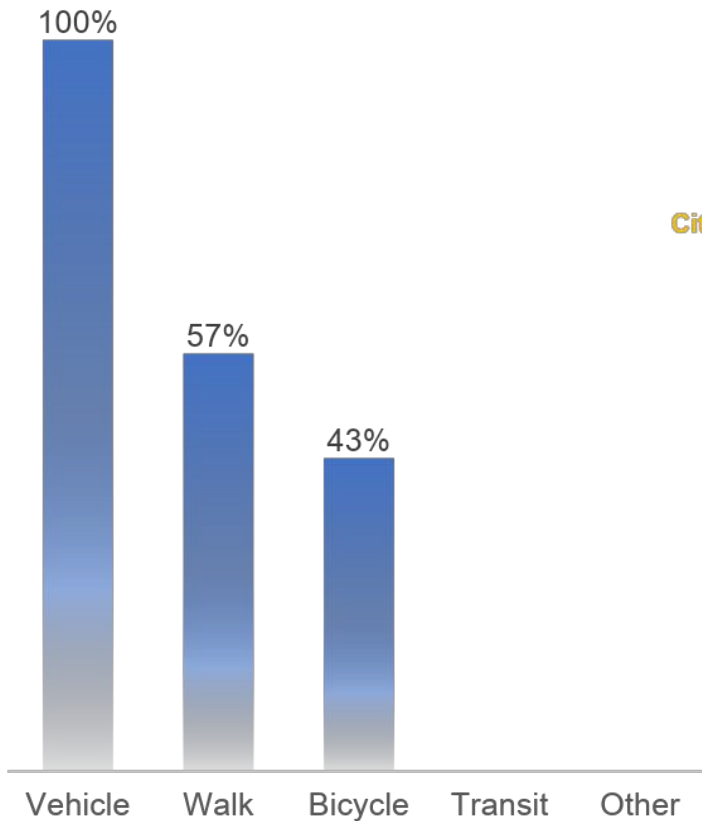
- **Virtual Public Meeting #1:** Thursday, October 8, 2020
  - Provided Feedback on Walking Audit & Business Canvass
  - Polling Questions
- [Online survey available until December 15, 2020](#)
- **Public Meeting #2:** February 18, 2021\*
  - Alternative Designs
  - Corridor Improvements
  - Opportunities for Public Polling & Feedback



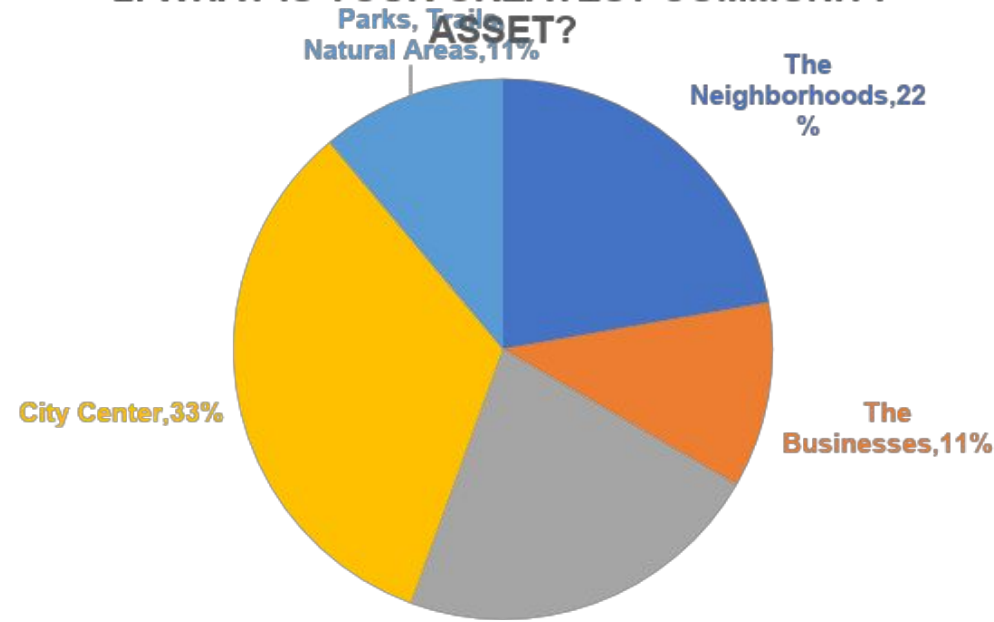


# Public Meeting Polling Results

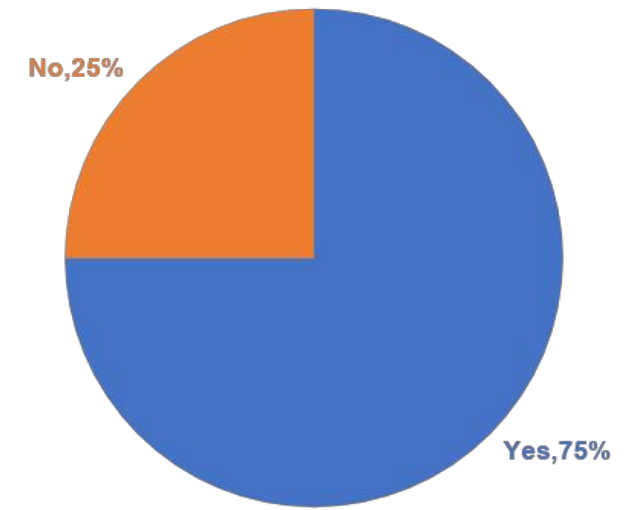
## 1. USE OF VILLAGE GREEN DRIVE:



## 2. WHAT IS YOUR GREATEST COMMUNITY ASSET?

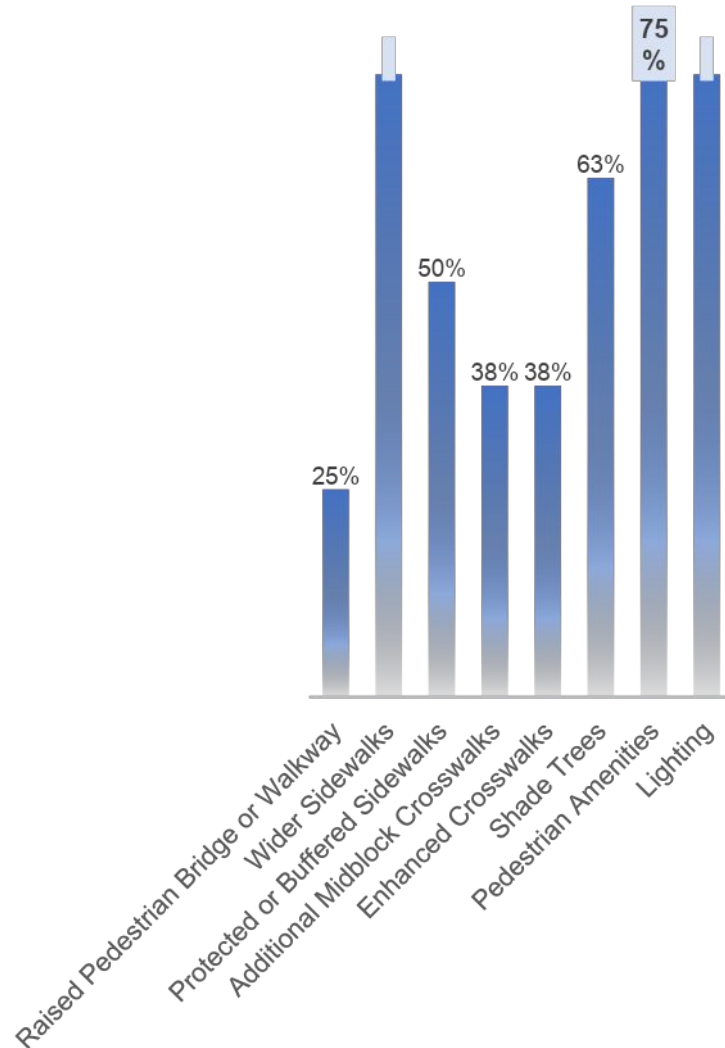


## 3. DO YOU LIVE OR WORK WITHIN ½ - MILE RADIUS OF VILLAGE GREEN DRIVE?



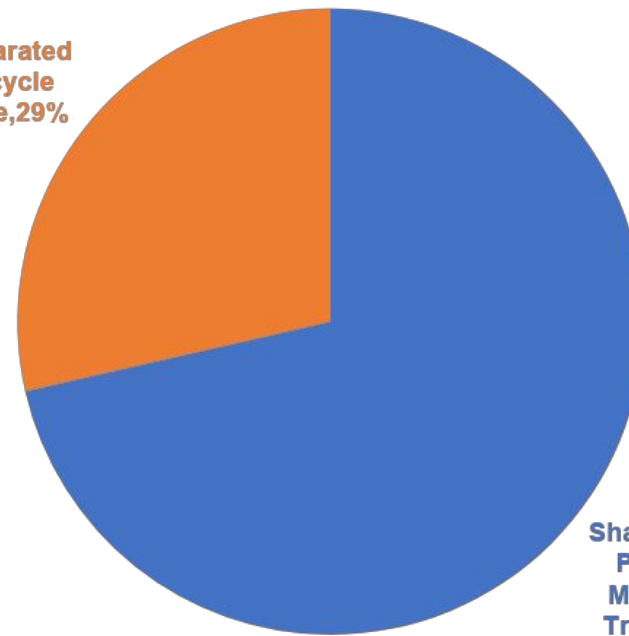
# Public Meeting Polling Results

## 4. PREFERRED PEDESTRIAN IMPROVEMENTS:



## 5. BICYCLE FACILITY:

Separated  
Bicycle  
Lane, 29%



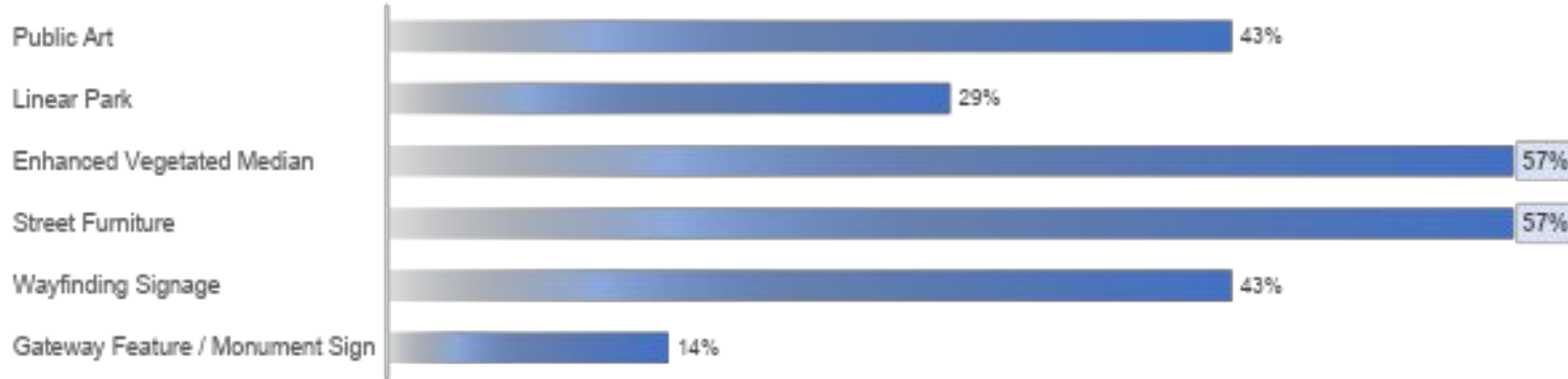
Shared Use  
Path or  
Multiuse  
Trail, 71%



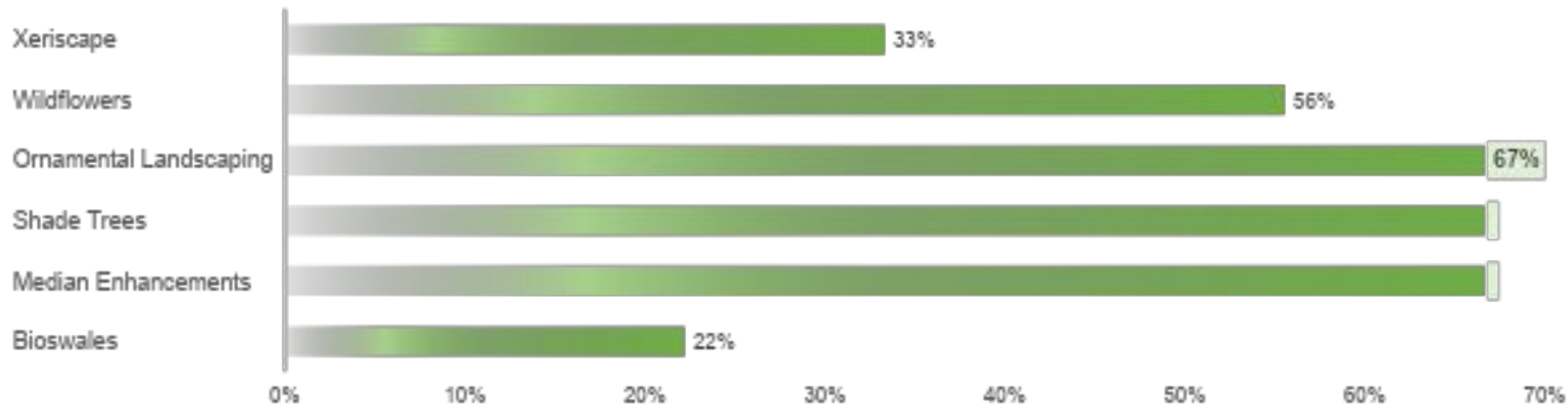


# Public Meeting Polling Results

## 6. PREFERRED COMMUNITY IMPROVEMENTS:

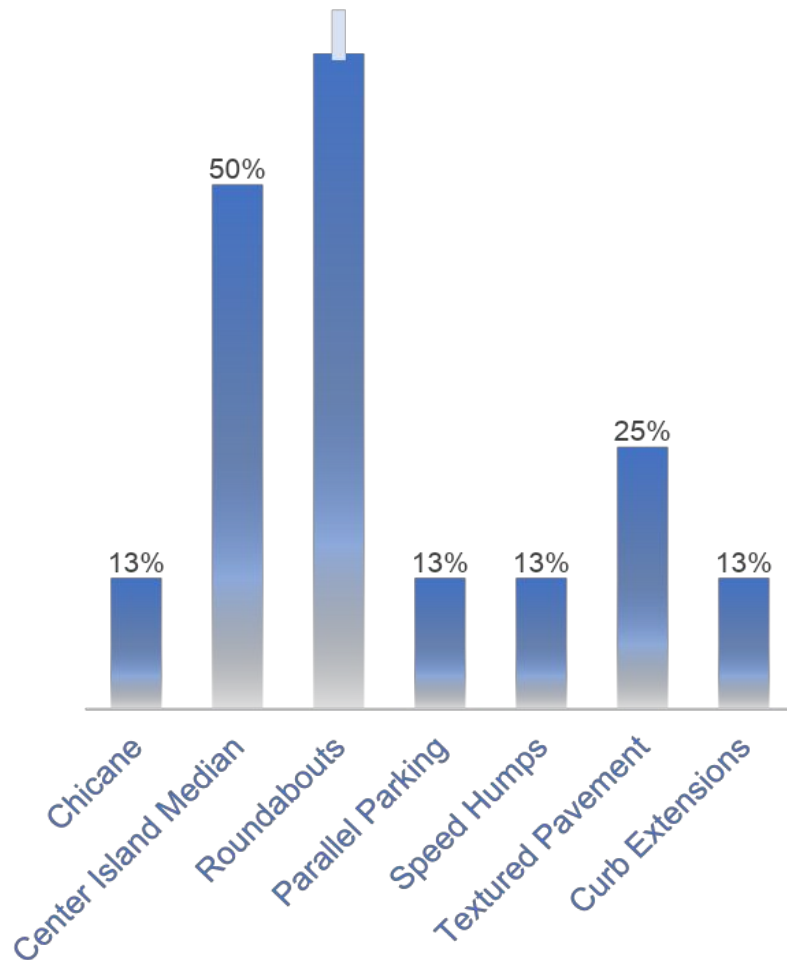


## 7. PREFERRED LANDSCAPE IMPROVEMENTS:

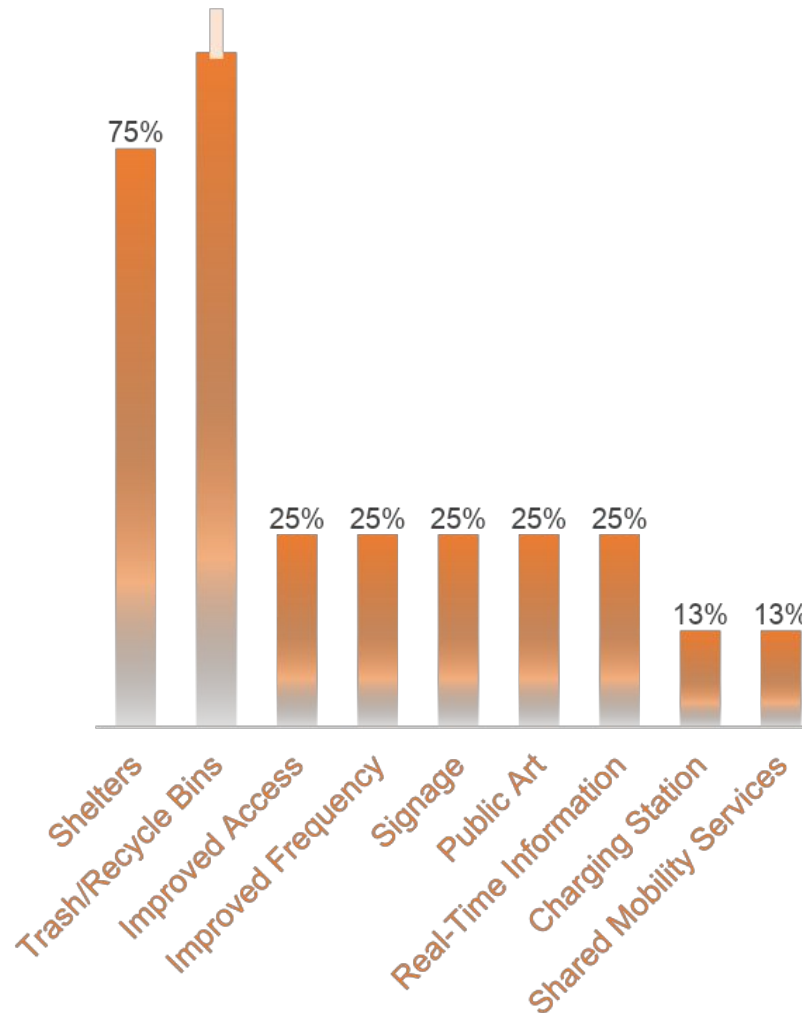


# Public Meeting Polling Results

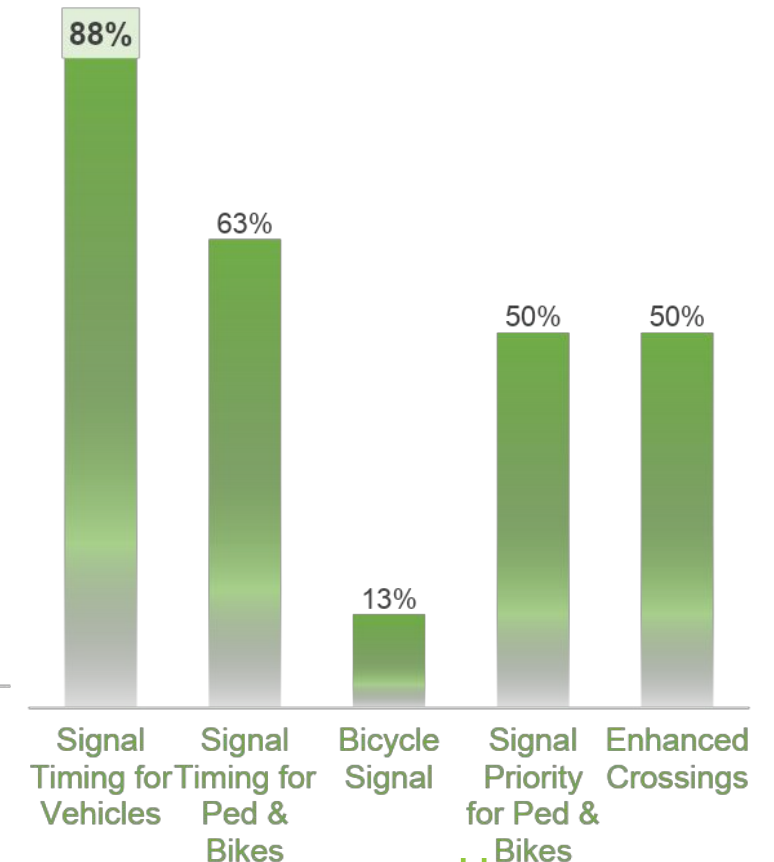
## 8. PREFERRED TRAFFIC CALMING TECHNIQUES:



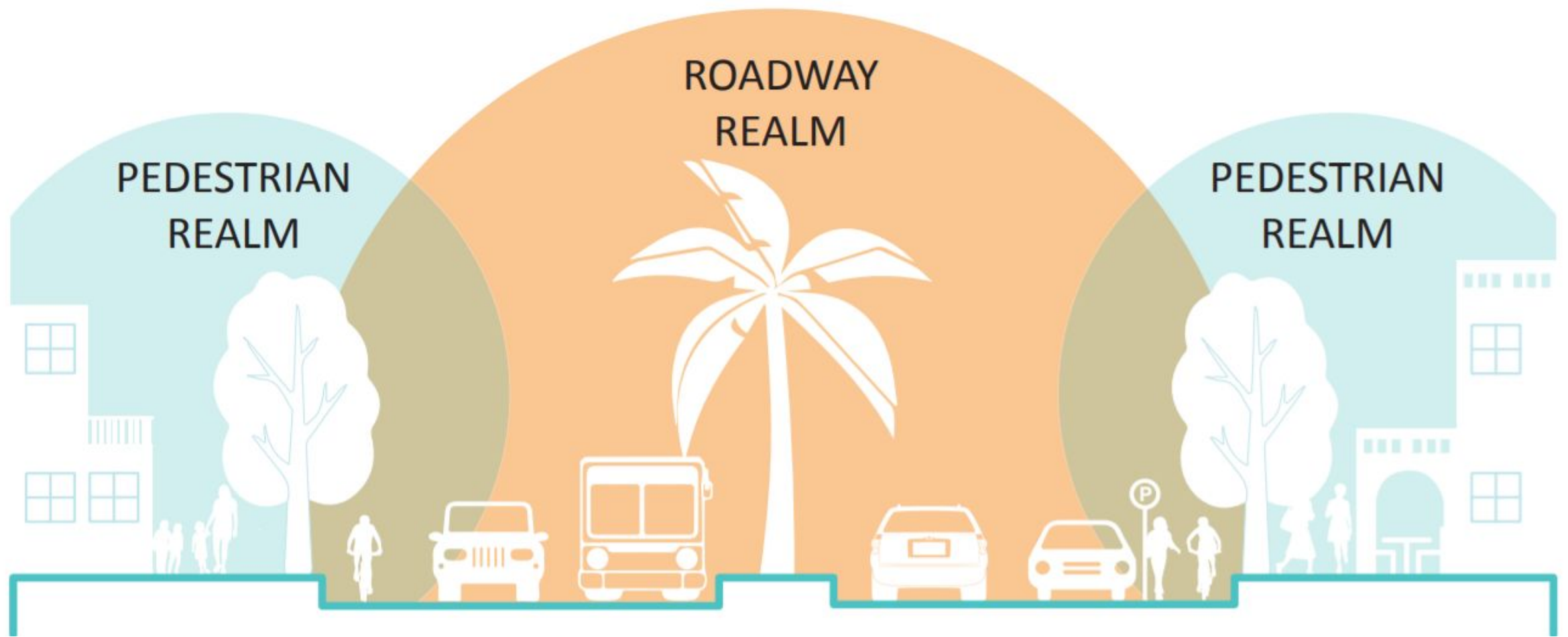
## 9. PREFERRED TRANSIT AMENITIES:



## 10. PREFERRED INTERSECTION IMPROVEMENTS:



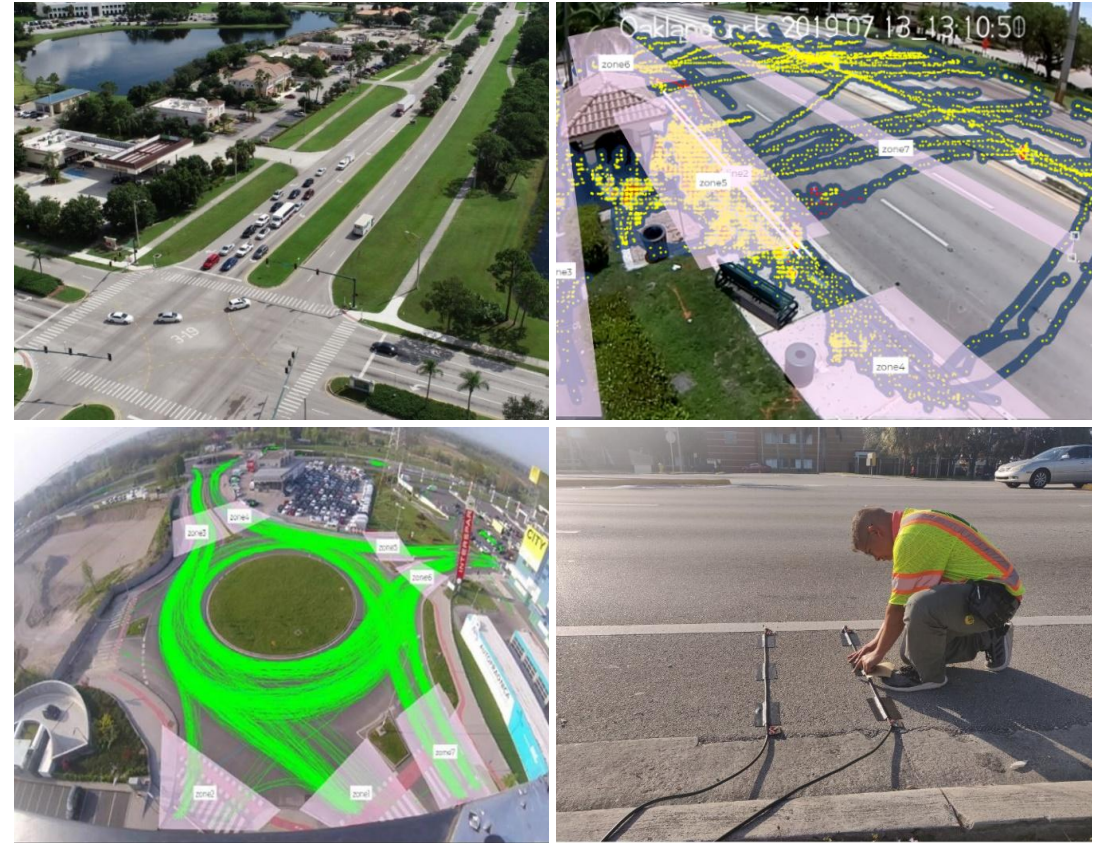




# Next Steps

# Task 2 Analysis

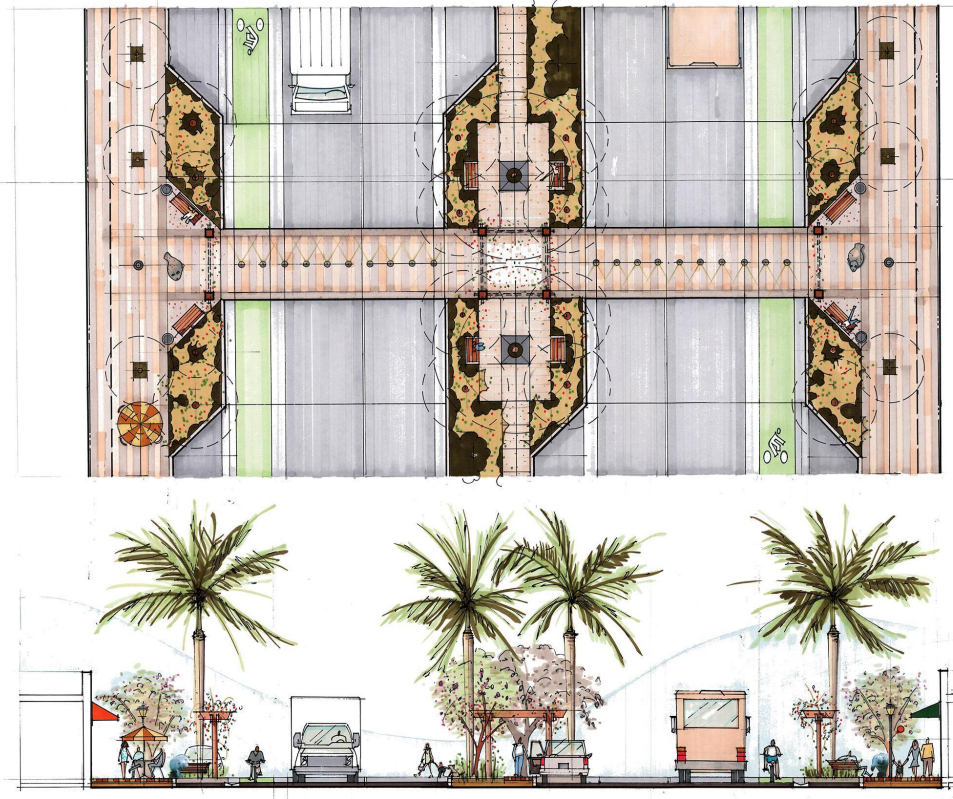
- Analysis of collected traffic data
- Analysis of survey responses & feedback
- Summary of existing conditions with identified issues & opportunities





# Task 3 Conceptual Design

- Draft up to 3 conceptual design alternatives for Village Green Drive
- Design scenarios to include multimodal improvements
- Preliminary cost estimates for each design alternative
- Review design alternatives at **Public Meeting #2** on Feb. 18, 2021



# Task 4 Master Plan

- Finalize design alternatives & cost estimates per public feedback
- Draft preferred alternative at 15% design plans
- **City Council meeting #2:** May 2021







# Questions & Comments

## Thank you!

### **City Contact:**

Jennifer Davis  
CRA Project Manager  
[JDavis@cityofpsl.com](mailto:JDavis@cityofpsl.com)  
(772) 344-4342



### **Project Contact:**

Christina Fermin  
Project Manager  
[CFermin@marlinengineering.com](mailto:CFermin@marlinengineering.com)  
(954) 870-5064

# **MARLIN**



# Council Meeting #1

November 16, 2020

PREPARED BY

**MARLIN**

