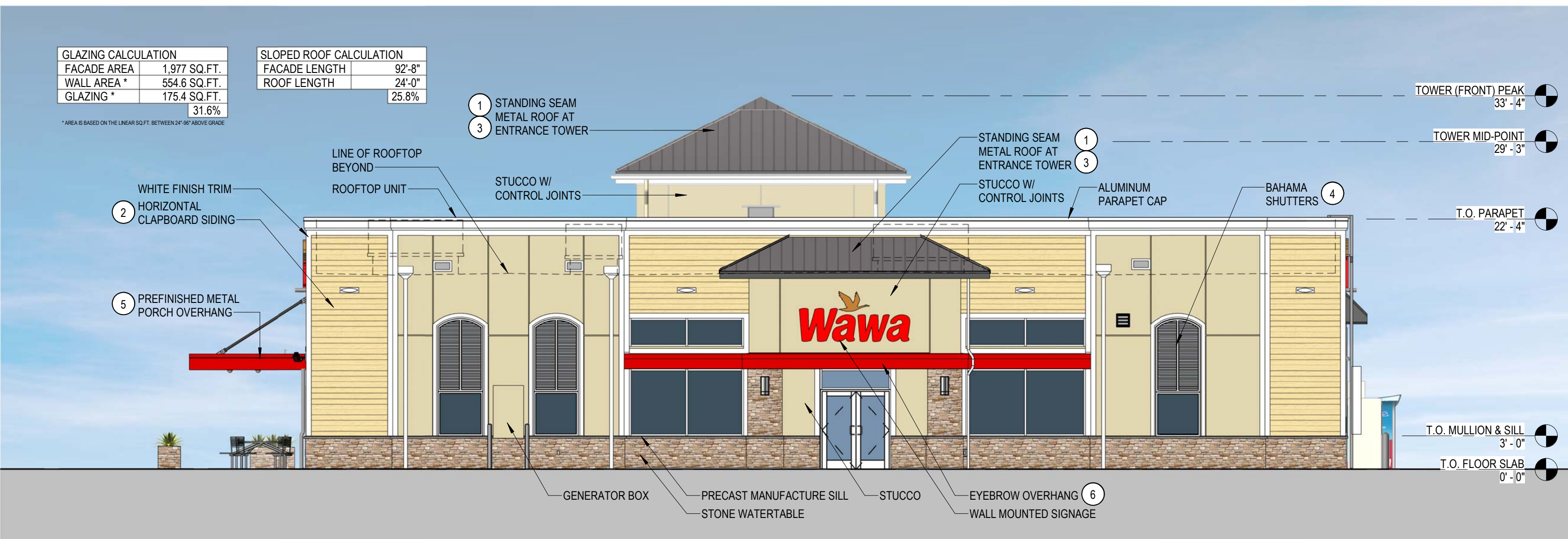
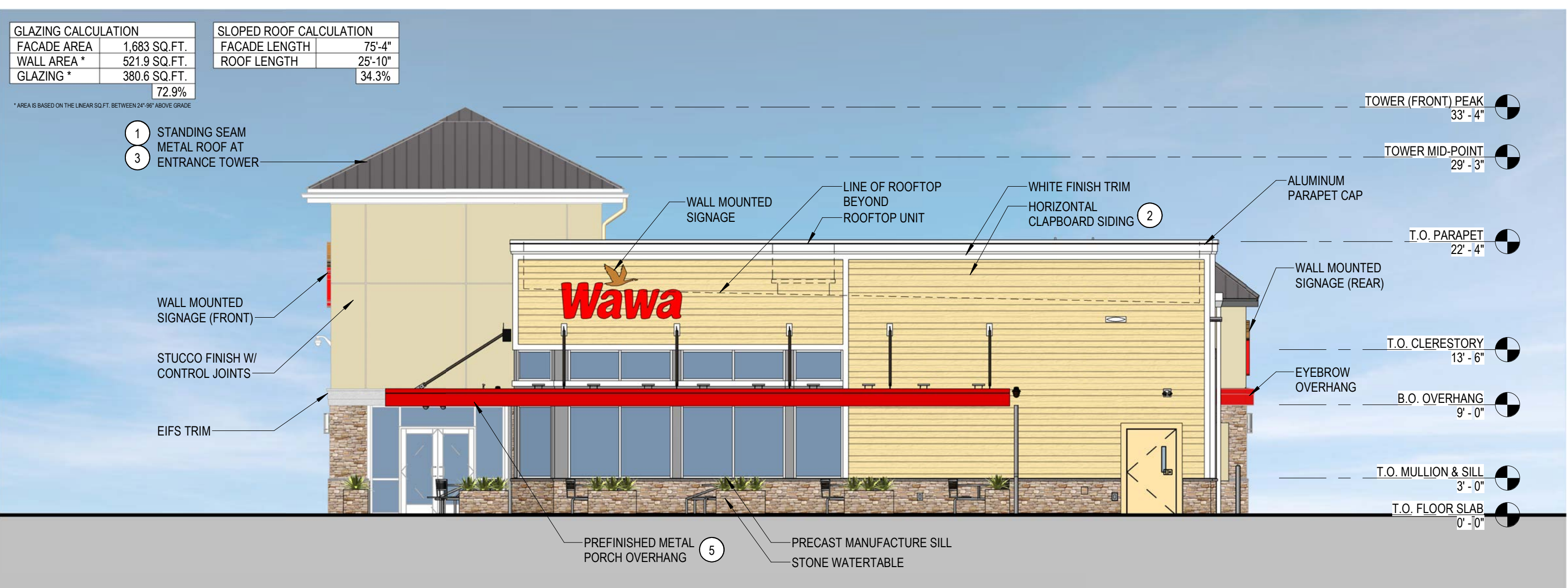


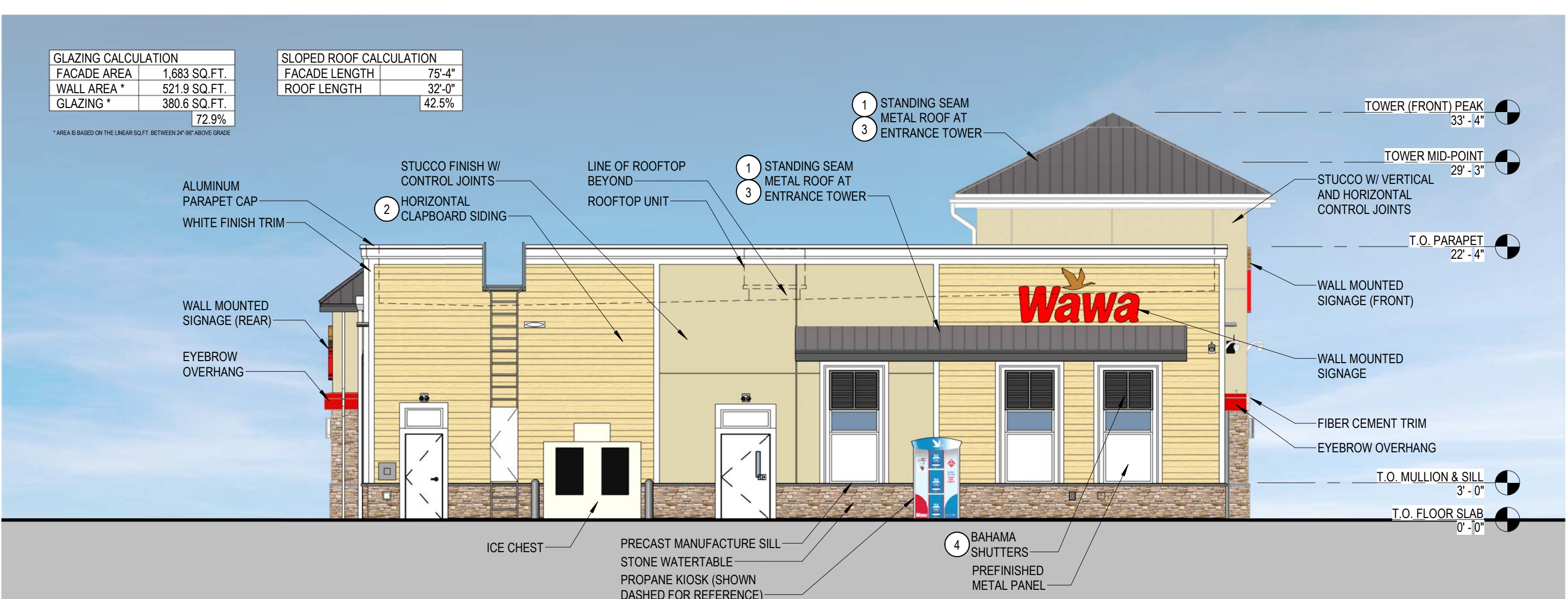
FRONT ELEVATION



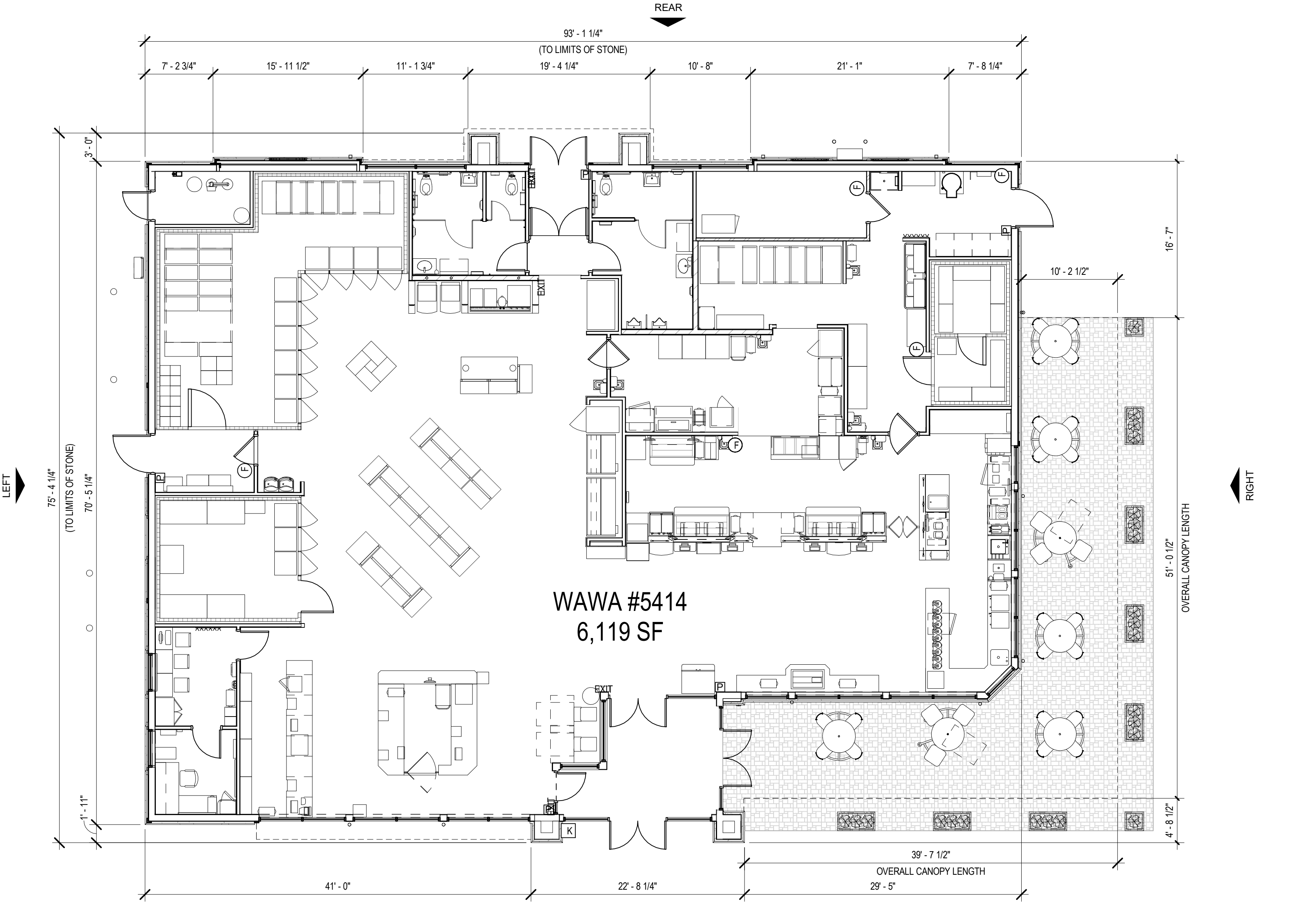
REAR (BECKER ROAD) ELEVATION



RIGHT (PORT ST. LUCIE BLVD) ELEVATION



LEFT ELEVATION



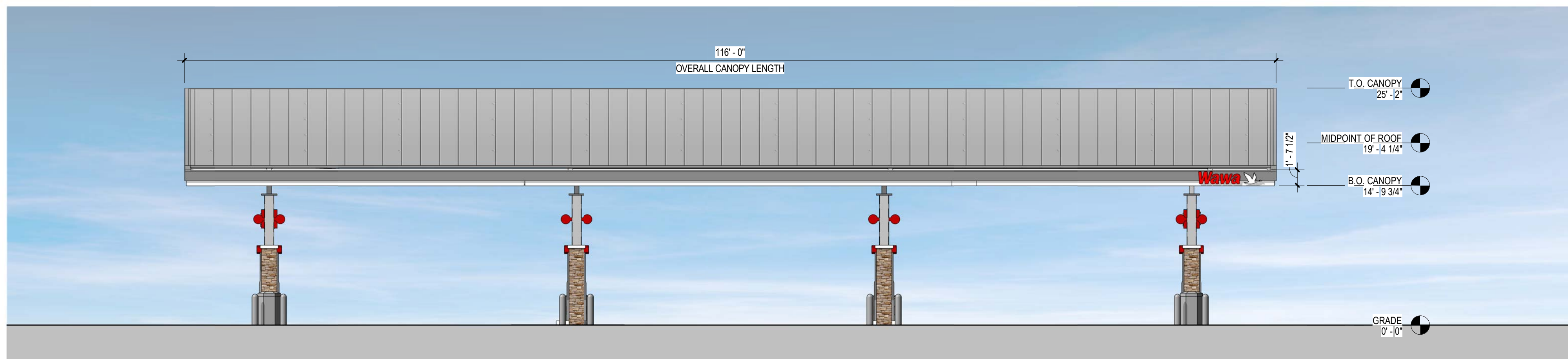
FLOOR PLAN

METAL DOOR BENJAMIN MOORE WHITE DIAMOND BM 2121-60	METAL OVERHANG ATAS INTERNATIONAL BRITE RED #17	FIBER CEMENT TRIM WHITE	FIBER CEMENT SIDING CREAM
STUCCO SENERGY MERINGUE #3085	ICE STORAGE BENJAMIN MOORE OC-1	METAL ROOF ATAS INTERNATIONAL SLATE GRAY	EXTERIOR STONE CULTURED STONE SOUTHWEST BLEND

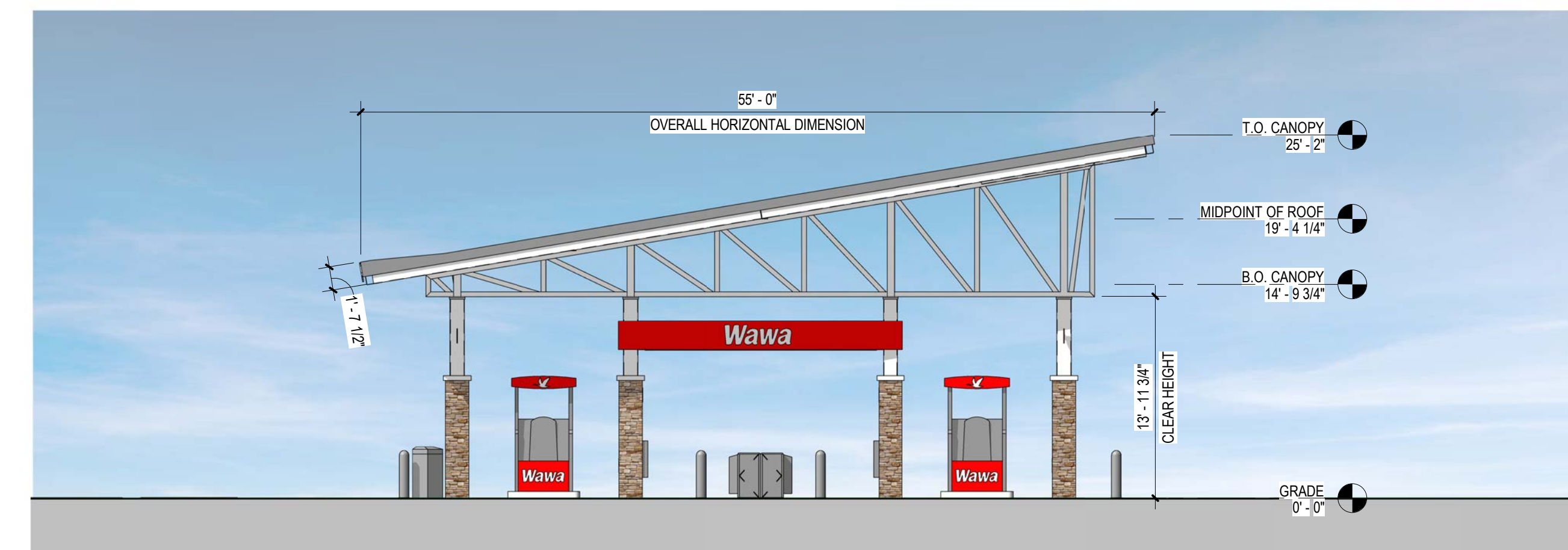
ARCHITECTURAL ELEMENTS (PORT ST. LUCIE CITYWIDE DESIGN STANDARDS)		
#	DESCRIPTION	CITYWIDE DESIGN STANDARDS
1	STANDING SEAM METAL ROOF.	NO. 1 PER TABLE 10.1
2	HORIZONTAL WOOD SIDING. MUST COVER AT LEAST 5% OF THE FRONT OF BUILDING FACE AREA.	NO. 3 PER TABLE 10.1
3	TOWER / CLOCK TOWER / BELL TOWER - (MIN 2:1, HEIGHT:WIDTH).	NO. 5 PER TABLE 10.1
4	BAHAMA SHUTTERS.	NO. 6 PER TABLE 10.1
5	PORCH / PORTICO.	NO. 10 PER TABLE 10.1
6	CANOPY / AWNING.	NO. 18 PER TABLE 10.1



WAWA F85FB 2021.02 - STORE #5414
 BECKER RD & PORT ST. LUCIE BLVD., PORT ST. LUCIE, FL • 2210881 • 01/19/2023



CANOPY SIDE ELEVATION

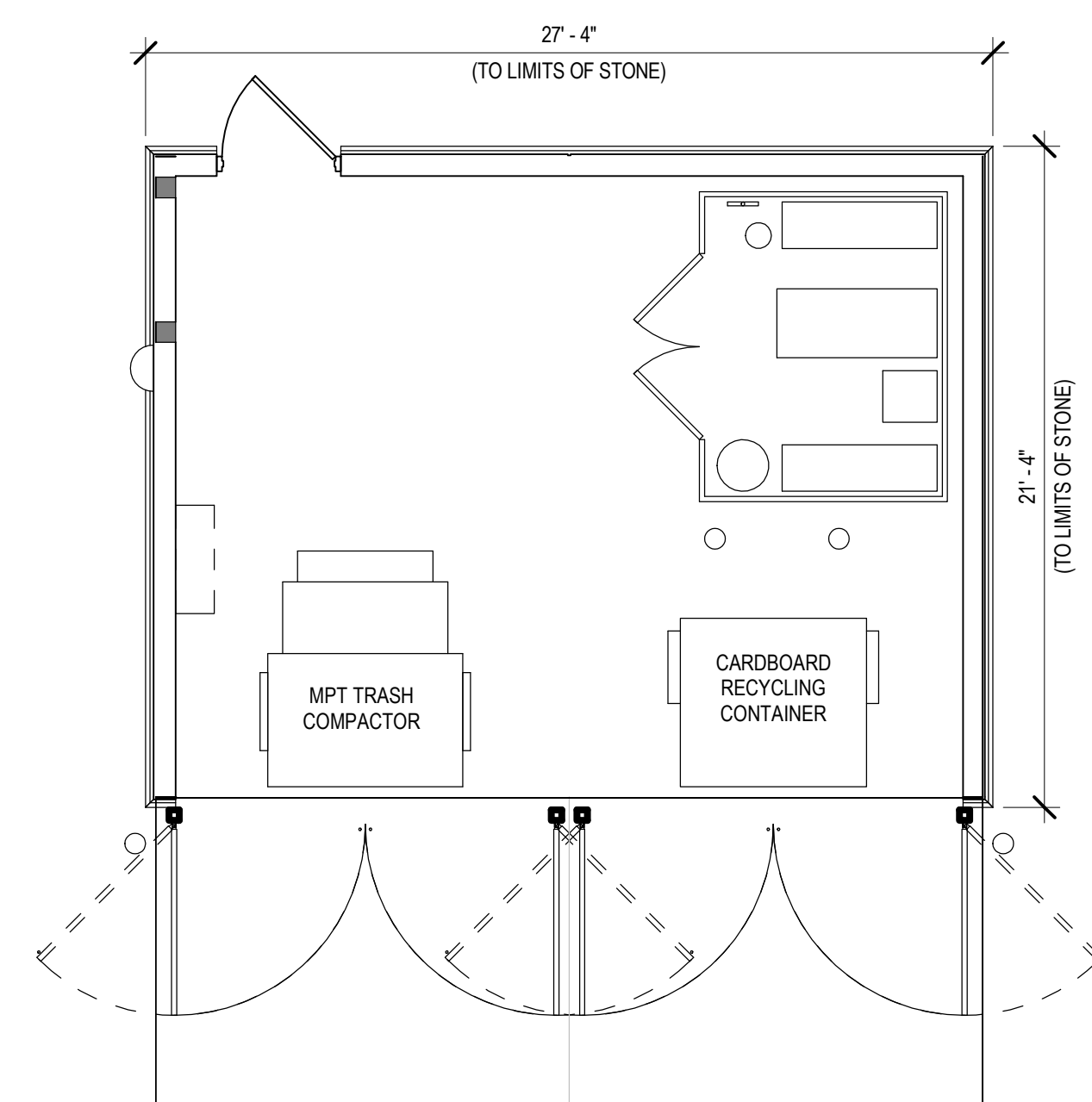


CANOPY END ELEVATION

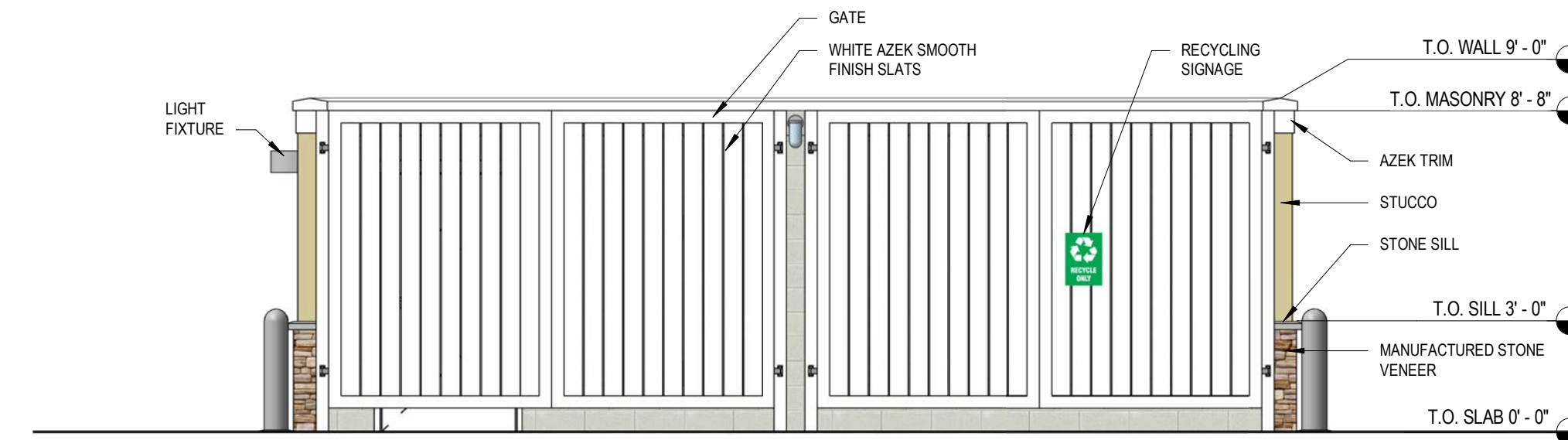


CANOPY PERSPECTIVE VIEW

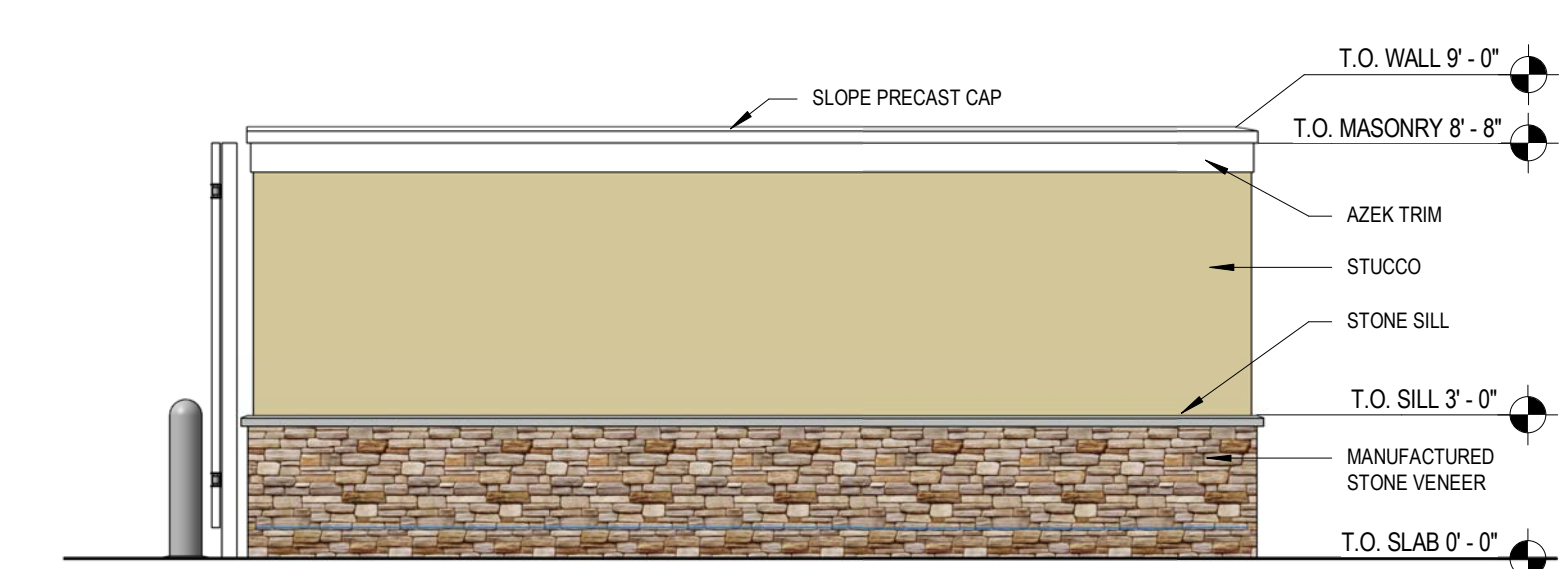
- METAL ROOF
ATAS INTERNATIONAL
SLATE GRAY
- METAL OVERHANG
ATAS INTERNATIONAL
BRITE RED #17
- METAL DOOR
BENJAMIN MOORE
WHITE DIAMOND
BM 2121-60
- STUCCO
SENERGY MERINGUE
#3085
- EXTERIOR STONE
CULTURED STONE
SOUTHWEST BLEND



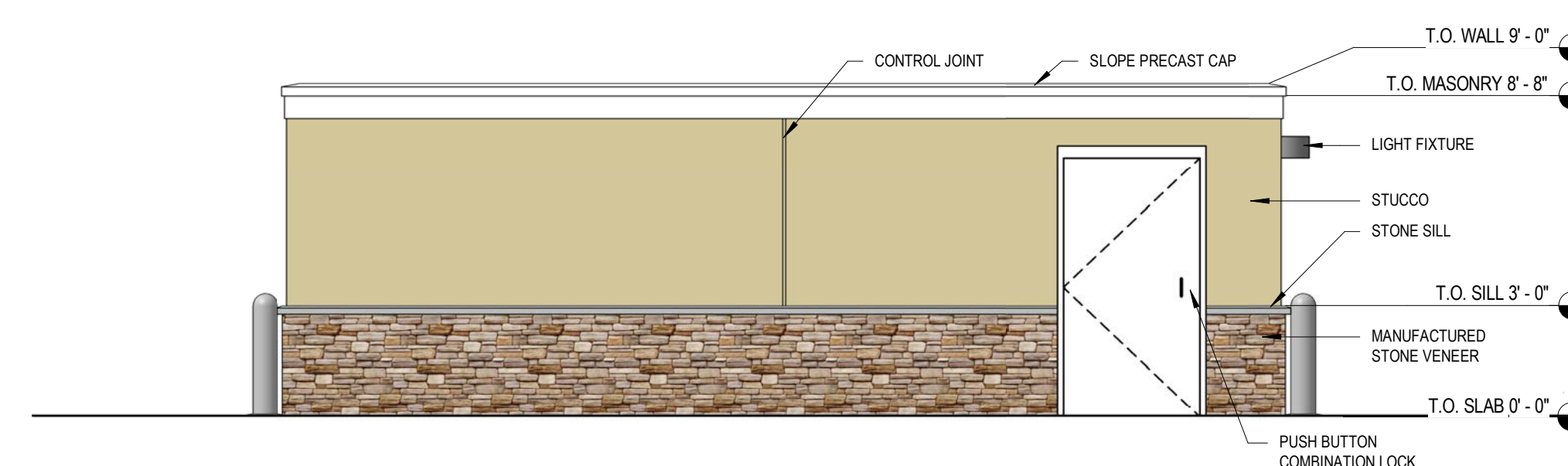
TRASH COMPOUND FLOOR PLAN



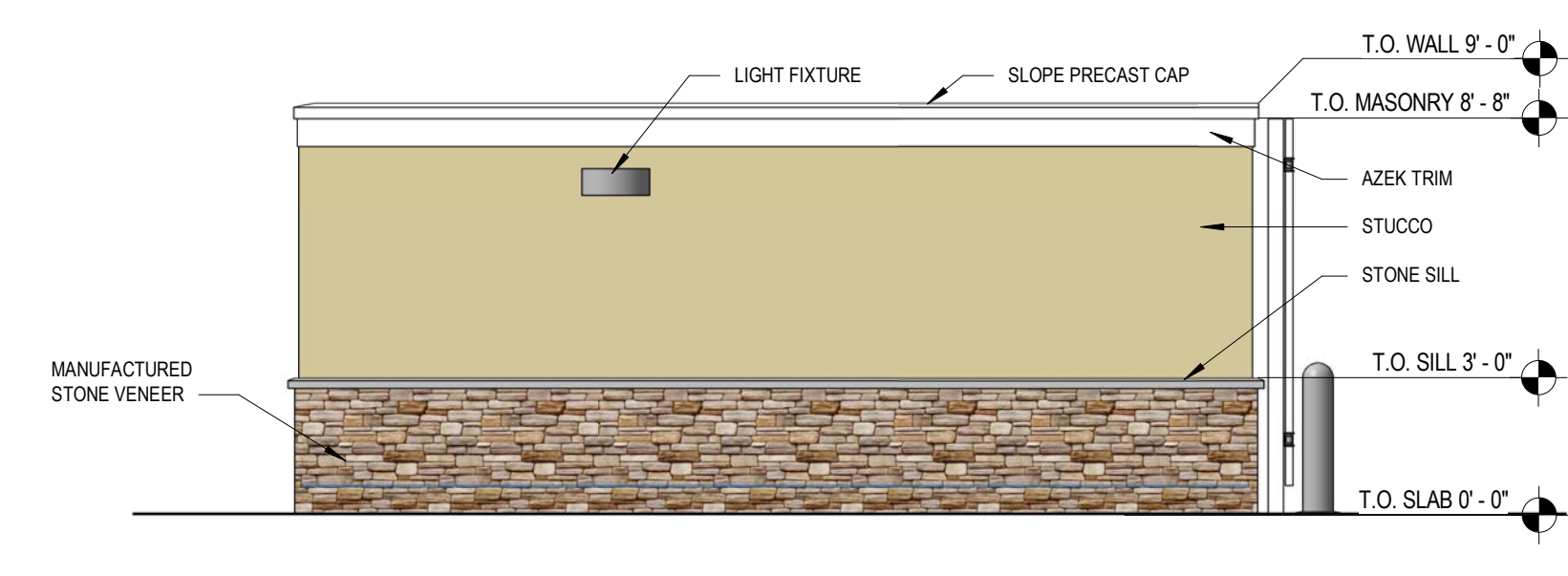
TRASH COMPOUND - FRONT ELEVATION



TRASH COMPOUND - RIGHT ELEVATION



TRASH COMPOUND - REAR ELEVATION



TRASH COMPOUND - LEFT ELEVATION

THE WAWA FUEL CANOPY IS A REGISTERED SERVICE MARK IN THE U.S. PATENT AND TRADEMARK OFFICE. THE FUEL CANOPY, AS WELL AS WAWA'S BRAND NAMES, SLOGANS, LOGOS, SERVICE MARKS, AND OTHER TRADEMARKS OF WAWA'S GOODS, SERVICES, AND PROMOTIONS BELONG EXCLUSIVELY TO WAWA INC. AND/OR WILD GOOSE HOLDING CO. INC. AND ARE PROTECTED FROM COPYING AND SIMULATION UNDER NATIONAL AND INTERNATIONAL TRADEMARK AND COPYRIGHT LAWS AND TREATIES THROUGHOUT THE WORLD.



WAWA GAS CANOPY STACKED 8 - TRASH COMPOUND FLRC17-R - STORE #5414

BECKER RD & PORT ST. LUCIE BLVD., PORT ST. LUCIE, FL • 2210881 • 01/19/2023