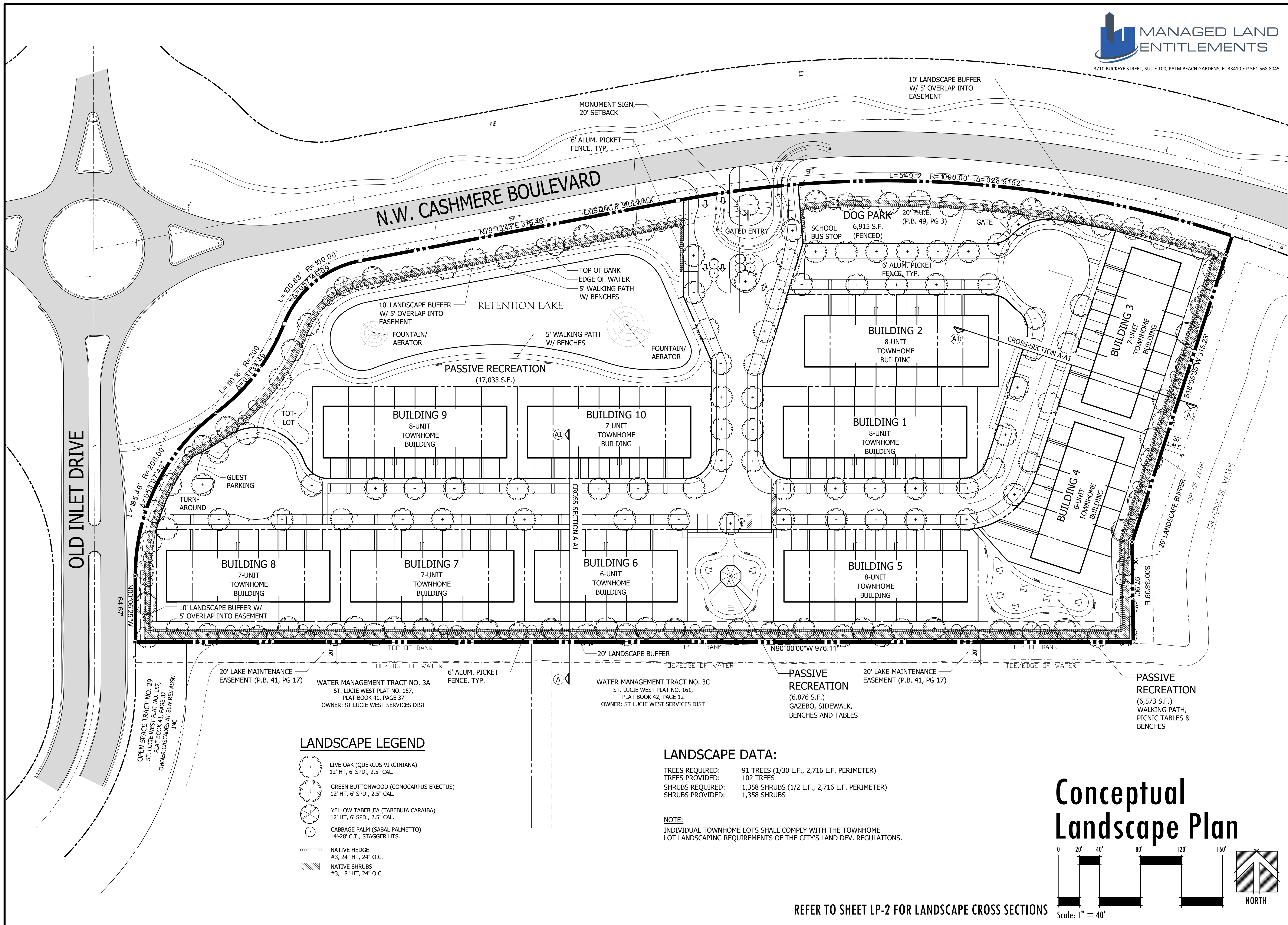


Cashmere Townhomes
 Port St. Lucie, Florida



LANDSCAPE LEGEND

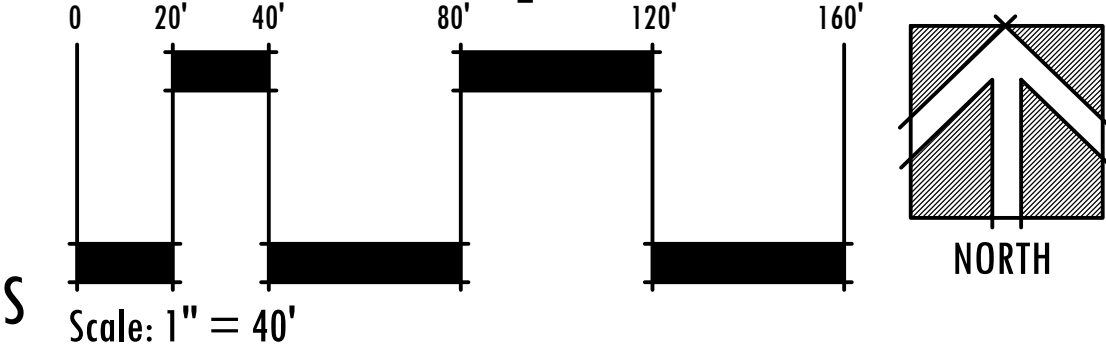
- LIVE OAK (QUERCUS VIRGINIANA)
12' HT, 6" SPD., 2.5" CAL.
- GREEN BUTTONWOOD (CONOCARPUS ERECTUS)
12' HT, 6" SPD., 2.5" CAL.
- YELLOW TABEBUIA (TABEBUIA CARAIBA)
12' HT, 6" SPD., 2.5" CAL.
- CABBAGE PALM (SABAL PALMETTO)
14'-28" C.T., STAGGER HTS.
- NATIVE HEDGE
#3, 24" HT, 24" O.C.
- NATIVE SHRUBS
#3, 18" HT, 24" O.C.

LANDSCAPE DATA:

- TREES REQUIRED: 91 TREES (1/30 L.F., 2,716 L.F. PERIMETER)
- TREES PROVIDED: 102 TREES
- SHRUBS REQUIRED: 1,358 SHRUBS (1/2 L.F., 2,716 L.F. PERIMETER)
- SHRUBS PROVIDED: 1,358 SHRUBS

NOTE:
 INDIVIDUAL TOWNHOME LOTS SHALL COMPLY WITH THE TOWNHOME LOT LANDSCAPING REQUIREMENTS OF THE CITY'S LAND DEV. REGULATIONS.

Conceptual Landscape Plan



REFER TO SHEET LP-2 FOR LANDSCAPE CROSS SECTIONS

Landscape Architect of Record



Jason M. Litterick, RLA
 (LA0001677)

Scale: 1" = 40'-0"

Designed: JML
 Drawn: JML
 Approved: JML
 Date: 3/28/22
 Job no.
 Revisions:

Sheet No.

LP-1