

# TRAFFIC CALMING UPDATE

## 2025 SUMMER WORKSHOP

PRESENTED BY: THOMAS SALVADOR, CP II, CPWP-S, CPWP-M,  
CIP & SALES TAX PROJECT GROUP MANAGER

PREPARED BY: ANTONIO BALESTRIERI, P.Eng, MBA,  
TRAFFIC OPERATIONS DIVISION MANAGER



City of Port Saint Lucie, Public Works Department



**PORT ST. LUCIE**  
HEART OF THE TREASURE COAST



# AGENDA

- Strategic Objectives
- Why Speed Matters & Target Zero
- To Calm or Not to Calm...
- Traffic Calming Projects (FY 24/25, FY 25/26 & FY 26/27)
- Budgets and Project Demands
- Request to Council





# STRATEGIC OBJECTIVES

GOAL 1: Safe, Clean, and Beautiful  
GOAL 5: High Quality Infrastructure



## PURPOSE OF TRAFFIC CALMING

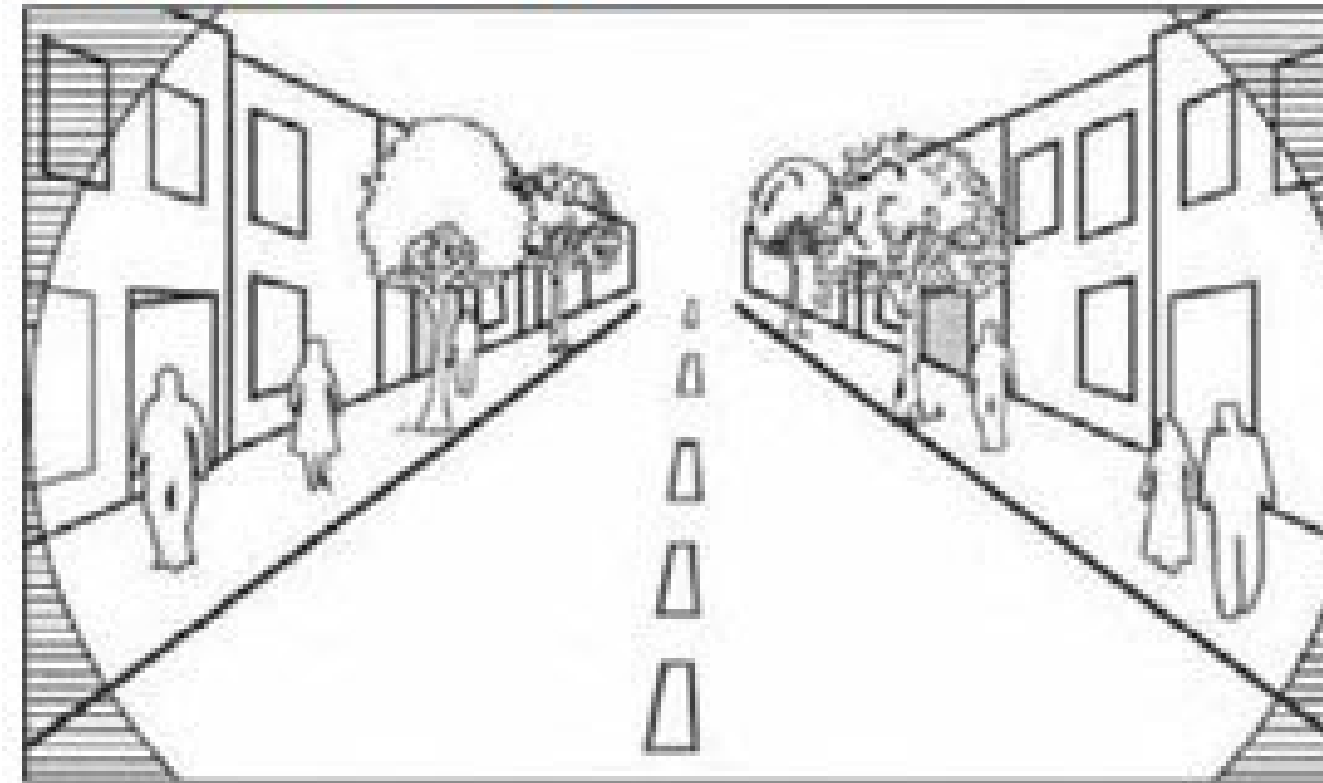
*Increase the quality of life...by reducing automobile speeds and traffic volumes on neighborhood streets  
...help to transform streets and aid in creating a sense of place for communities.*

*-Federal Highway Administration (FHWA)*

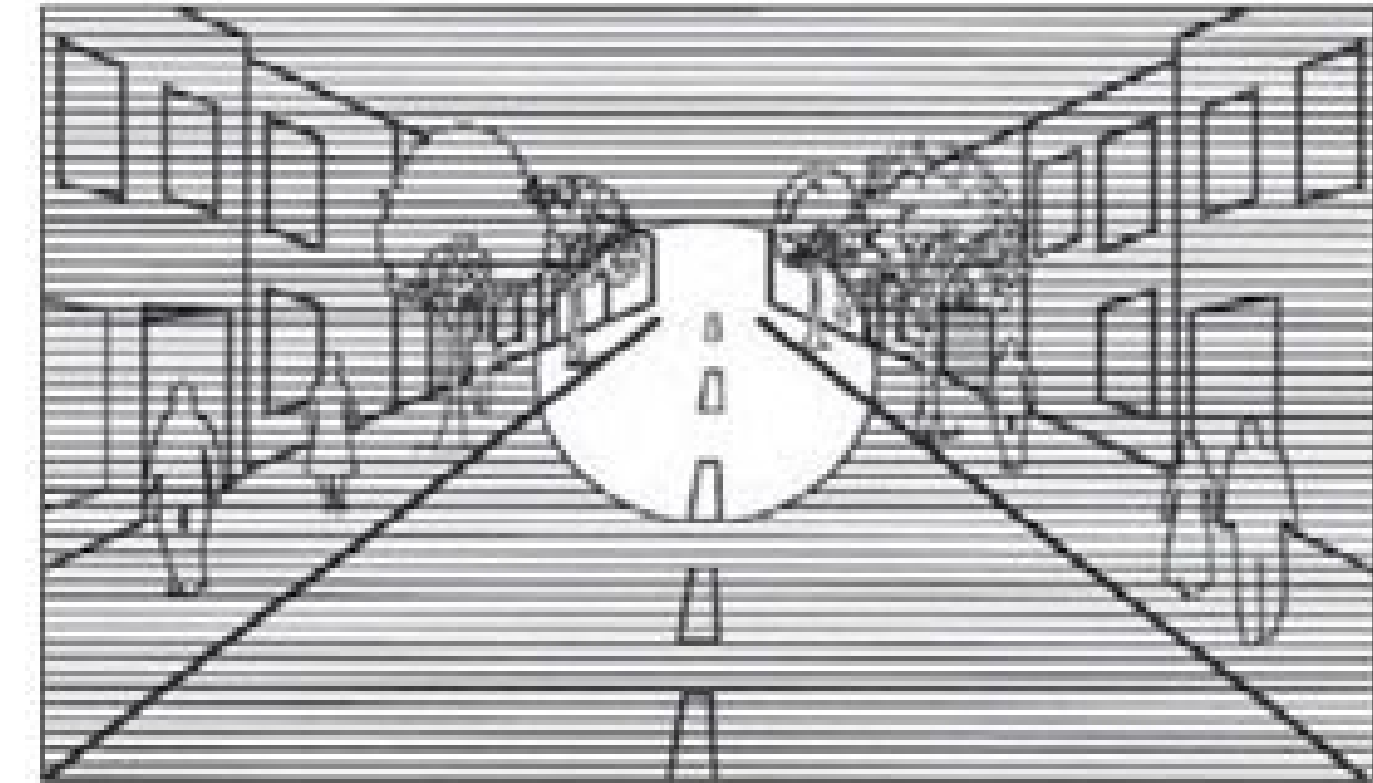


# WHY SPEED MATTERS

## WHY SPEED MATTERS



*Field of vision at 15 MPH*



*Field of vision at 30 to 40 MPH*

*A driver's field of vision increases as speed decreases. At lower speeds, drivers can see more of their surroundings and have more time to see and react to potential hazards.*



HIT BY A VEHICLE  
TRAVELING AT:

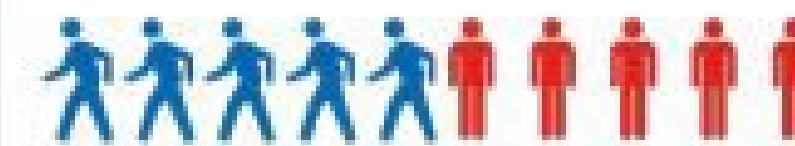
**20  
MPH**



9 out of 10 pedestrians survive

HIT BY A VEHICLE  
TRAVELING AT:

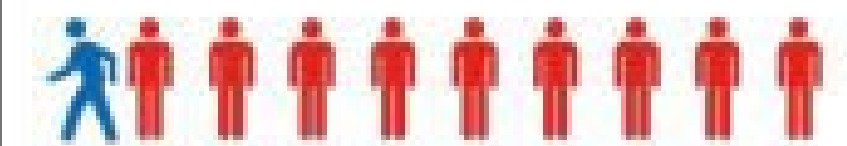
**30  
MPH**



5 out of 10 pedestrians survive

HIT BY A VEHICLE  
TRAVELING AT:

**40  
MPH**



Only 1 out of 10 pedestrians survives

*Speed is especially lethal for vulnerable users like pedestrians and people biking. The risk of injury and death increases as speed increases.*





# ON FLORIDA'S ROADS...

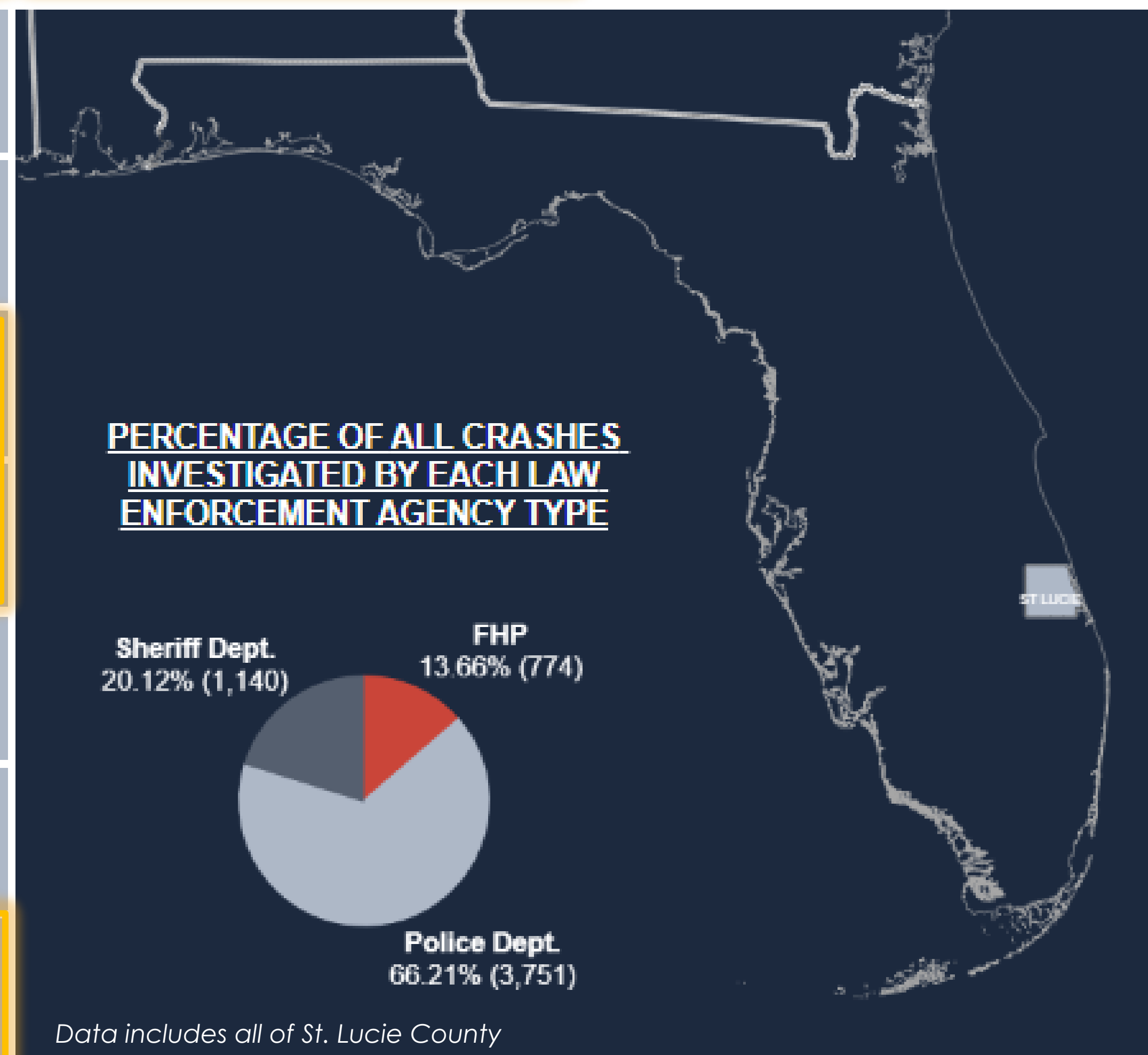
**8** daily fatalities

**49** daily serious injuries

**But when it comes to human lives, no fatality or serious injury is acceptable.**

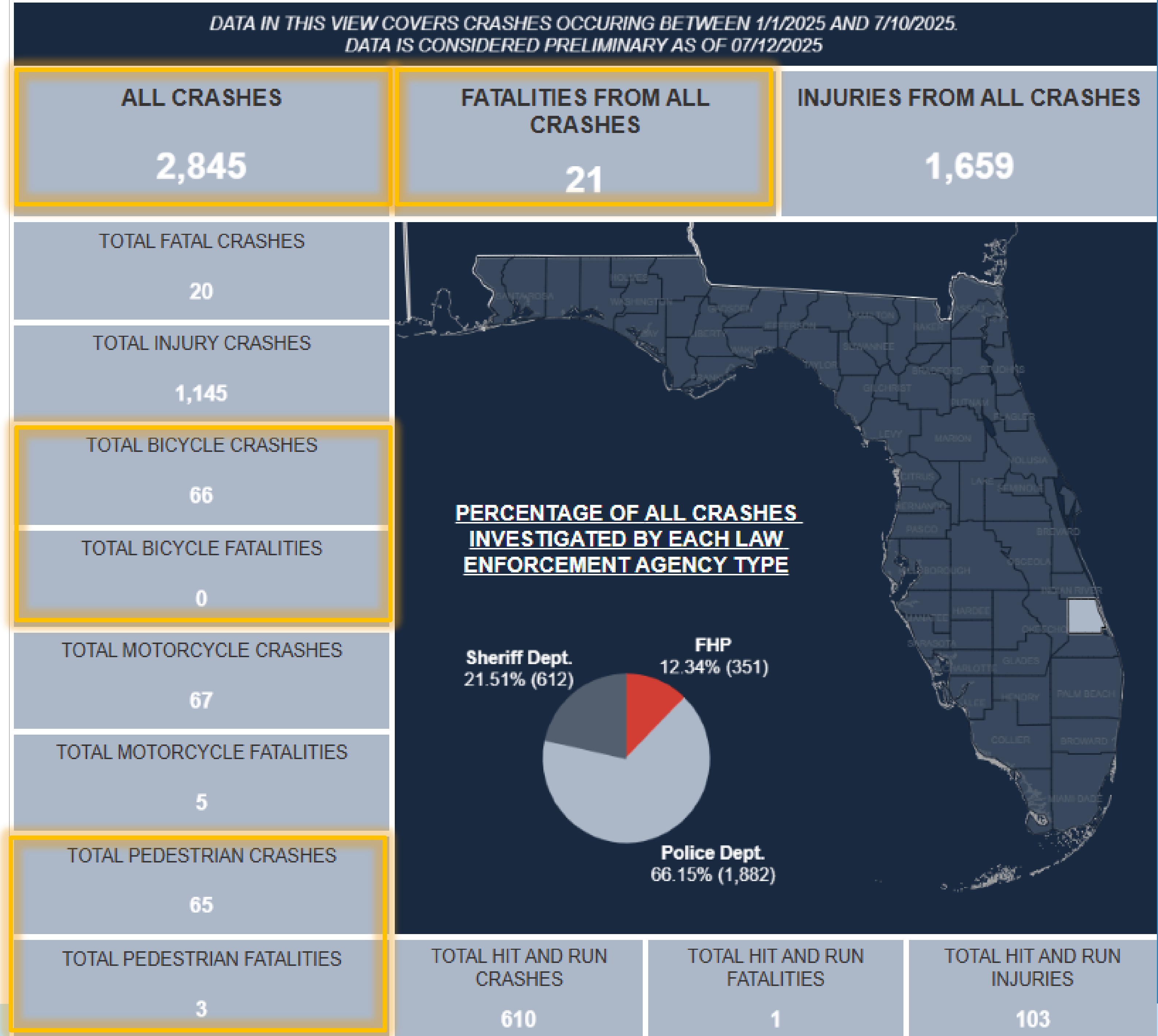
Source: 2021 Florida Strategic Highway Safety Plan

DATA IN THIS VIEW COVERS CRASHES OCCURRING BETWEEN 1/1/2024 AND 12/31/2024. DATA IS CONSIDERED PRELIMINARY AS OF 05/17/2025			
ALL CRASHES	5,665	FATALITIES FROM ALL CRASHES	52
INJURIES FROM ALL CRASHES	3,404		
TOTAL FATAL CRASHES	44		
TOTAL INJURY CRASHES	2,244		
TOTAL BICYCLE CRASHES	120		
TOTAL BICYCLE FATALITIES	1		
TOTAL MOTORCYCLE CRASHES	133		
TOTAL MOTORCYCLE FATALITIES	8		
TOTAL PEDESTRIAN CRASHES	125		
TOTAL PEDESTRIAN FATALITIES	8		
TOTAL HIT AND RUN CRASHES	1,382	TOTAL HIT AND RUN FATALITIES	6
		TOTAL HIT AND RUN INJURIES	253





- Data is for all of St. Lucie County.
- Data cannot be filtered by City.
- Current data shows numbers for the first part of 2025.





# TO CALM OR NOT TO CALM....

## PUBLIC ENGAGEMENT

- Preliminary Information Meetings (PIM's)
- Traffic Calming Information Flyer

## GOALS

- Educate residents of the PRO'S and CON'S
- Manage expectations

## MEASURING TRAFFIC CALMING SUCCESS

10% Reduction in speeding occurrences

## ON-GOING

- Continue to evaluate calming implementations
- Review different viable options

### Traffic Calming

In 2020, the City implemented a Neighborhood Traffic Calming Policy to provide guidelines for identifying and addressing concerns related to speeding, volumes of traffic and safety on neighborhood streets.



#### Benefits of Traffic Calming

- May be effective in reducing vehicle speeds by 5 to 10 miles an hour.
- When combined, speed tables, signage and pavement markings may serve as a visual tool that reminds drivers to slow down.
- Areas that benefit the most from traffic calming typically have a posted speed limit of 25 mph or less.
- A reduction in the volume of traffic has been observed when traffic-calming devices are installed.
- Studies show traffic-calming devices may result in a decrease in auto collisions and severe accidents.

#### What is Traffic Calming?

Traffic calming consists of a combination of measures, such as signage, speed tables, raised intersections and other measures, put in place on existing roads to reduce vehicle speeds and improve safety for pedestrians and cyclists.

As pictured above, the Seminole Speed Table is the only speed table approved to be installed by the City of Port St. Lucie and is almost exclusively used on residential / local streets where roadway conditions and posted speed limits allow.



#### Speed Tables

Speed tables are raised pavement structures that reduce vehicle speeds. These structures are set by Public Safety Departments.

#### For more information:

Beth Zsoka  
Community Outreach  
Public Works Department  
bzsoka@cityofpsl.com  
772-871-5176

#### Removal of Traffic Calming

Property owners within the traffic calming area may request removal of the traffic-calming measures after they have been in place for two years by submitting a petition to the City. The petition shall request removal of the traffic-calming measures, acknowledge that the property owners will pay for the removal and include the signatures of at least 75% of the property owners within the calming area. Upon receipt of the petition, the City will assess the property owners within the traffic-calming area for the costs and then remove the traffic-calming measures.

Traffic calming measures may be removed or altered at any time if emergency response is significantly impacted, the traffic count for the street exceeds 5,000 vehicles per day or the Public Works Director determines it is in the best interest of public safety.

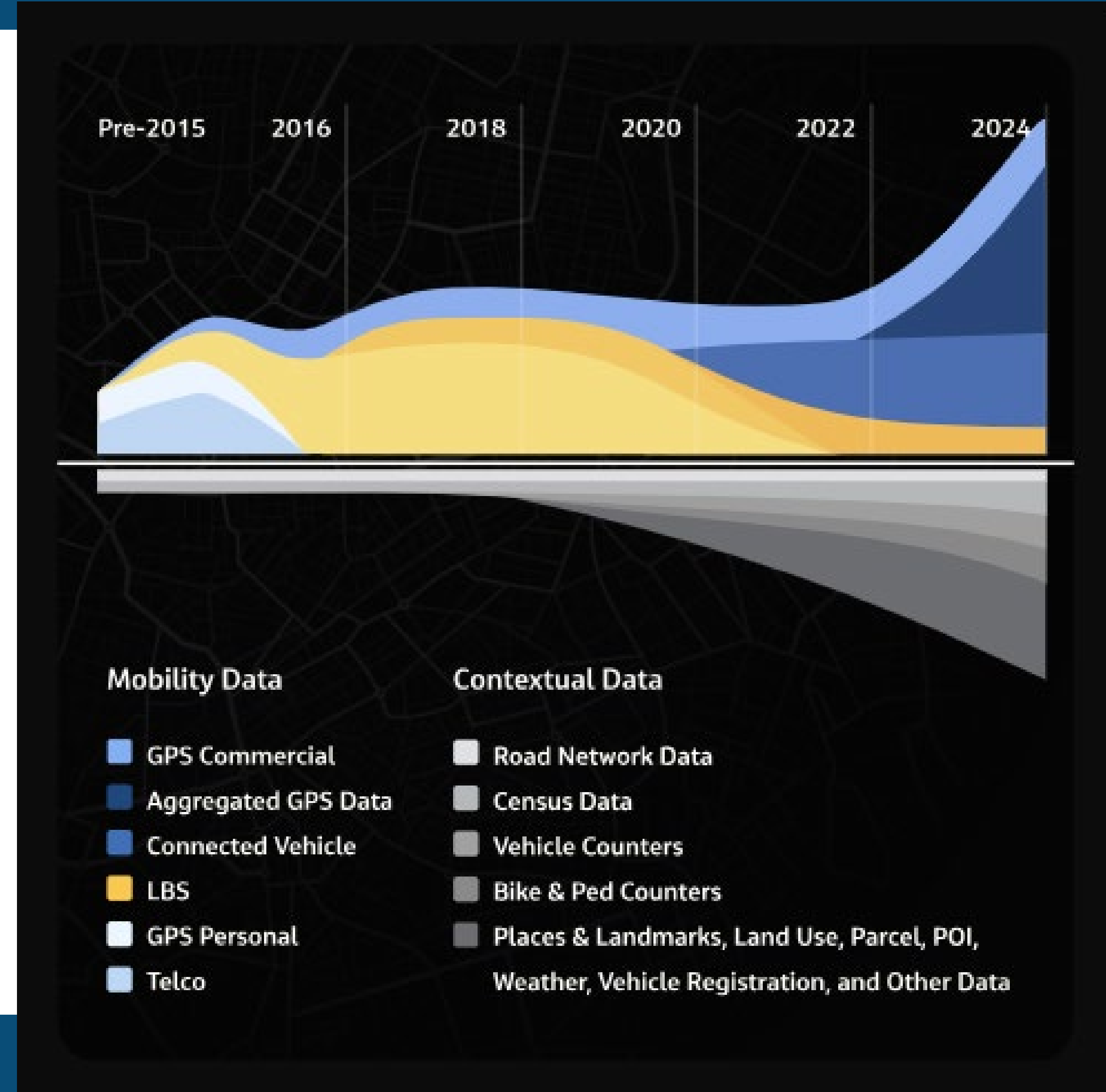


# EFFICENCIES & INSIGHTS WITH CONNECTED DATA



**STREETLIGHT**  
A Jacobs Company

- *Traffic review for volumes, speeds, and turning movement counts.*
- *Supports projects and grant applications.*
- *Monitors developer obligations.*
- *Supports Mobility Plan updates.*
- *Transportation Planning Organization (TPO) long-term project prioritization.*





# TRAFFIC CALMING PROJECTS

**FY 2024/25**

## **CONSTRUCTION COMPLETE**

- SW WHITMORE DRIVE  
(SW BAYSHORE TO SW AIROSO)
- NW VOLUCIA DRIVE  
(NW EAST TORINO TO W  
BLANTON)

**FY 2025/26**

## **PENDING APPROVAL FOR CONSTRUCTION**

- SE GRAND DRIVE  
(SE LENNARD TO SE TIFFANY)
- SE ATLANTUS AVENUE  
(SE FLORESTA TO SE CORAL REEF)

## **PLANNING & PUBLIC OUTREACH**

- SW BARGELLO AVENUE  
(SW SAVONA TO SW MARTIN)  
PIM TBD
- SW MARTIN STREET  
(SW MEDINA TO SW SANTANDER)  
PIM TBD





# SE GRAND DRIVE

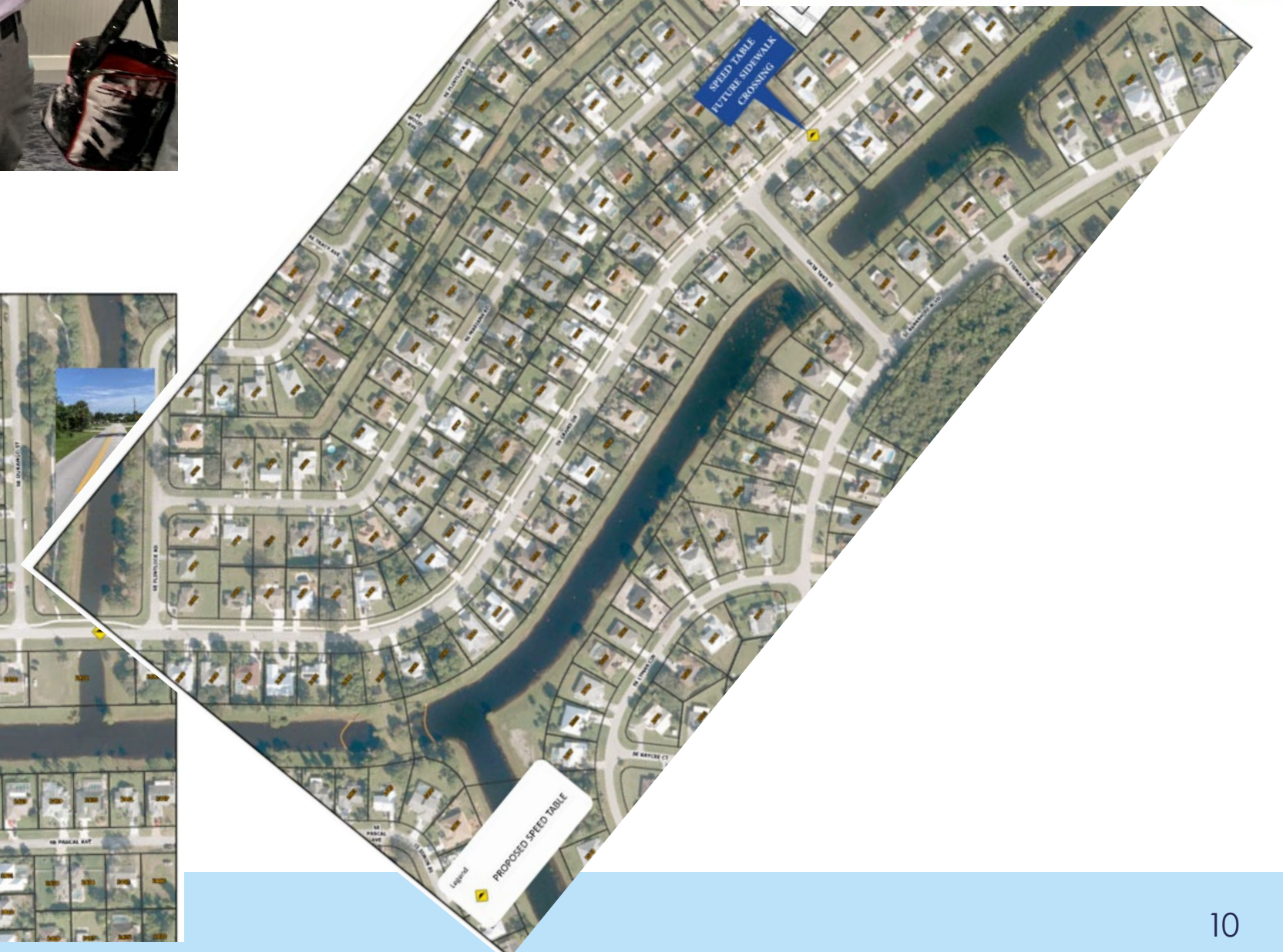
(SE Lennard Road to SE Walton Road)

TRAFFIC CALMING AND SIDEWALK PLANNED FOR FY 2025/26

- Efficiencies can allow partial work to start before new FY.
- Final Design Complete.
- 161 ballots were mailed.
- 58 returned, **46 in favor (79%)**.

PRELIMINARY INFORMATION MEETING (PIM)

SEPTEMBER 25<sup>th</sup> 2024





# SE ATLANTUS AVENUE

(NE Floresta Drive to SE Coral Reef Street)

TRAFFIC CALMING AND SIDEWALK PLANNED FOR FY 2025/26

- Final Design complete.
- 44 ballots mailed
- 25 ballots returned, **23 in favor (92%)**

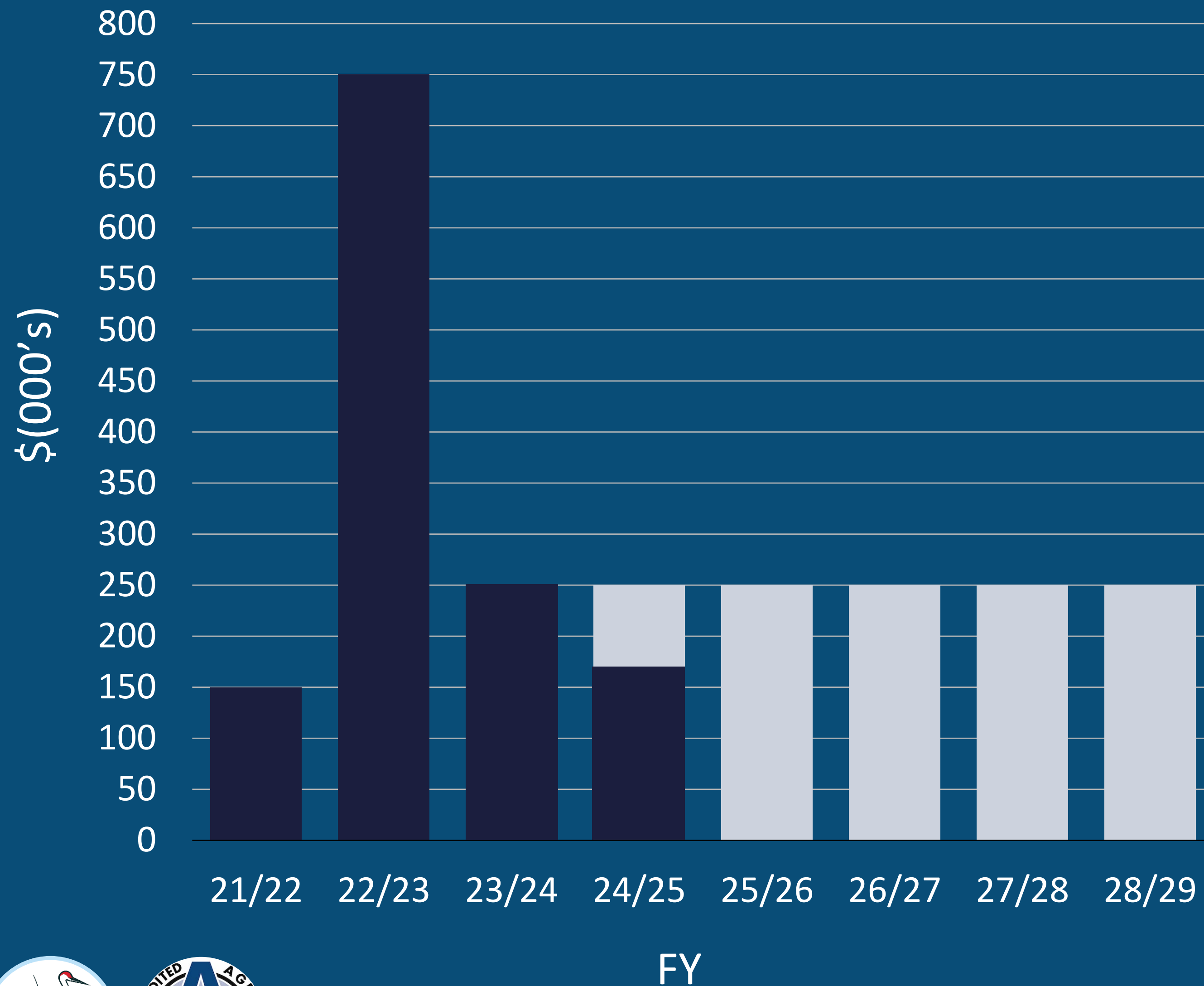
PRELIMINARY INFORMATION MEETING (PIM)

APRIL 7<sup>th</sup> 2025





# ANNUAL & REVISED BUDGETS



## Eight (8) requests in queue:

1. SE Grand Drive
2. SE Atlantus Avenue
3. SW Bargoello Avenue
4. SW Martin Street
5. College Park Road (on hold)
6. Thanksgiving Avenue (on hold)
7. SW Import Drive (in review)
8. NW Selvitz Road (in review)

**Rough Order Magnitude (ROM)**

**\$800k-\$1MM**





# REQUEST TO COUNCIL

- Approve Traffic Calming construction for segments of SE Grand Drive and SE Atlantus Avenue as described.
- Approve use of FY 25/26 funds and expedited construction using remaining FY 24/25 budget funds.



THANK YOU  
QUESTIONS?

Residents can reach out to city staff and  
submit application:  
[TrafficCalmingRequest@cityofpsl.com](mailto:TrafficCalmingRequest@cityofpsl.com)

