



PSL IN PROGRESS



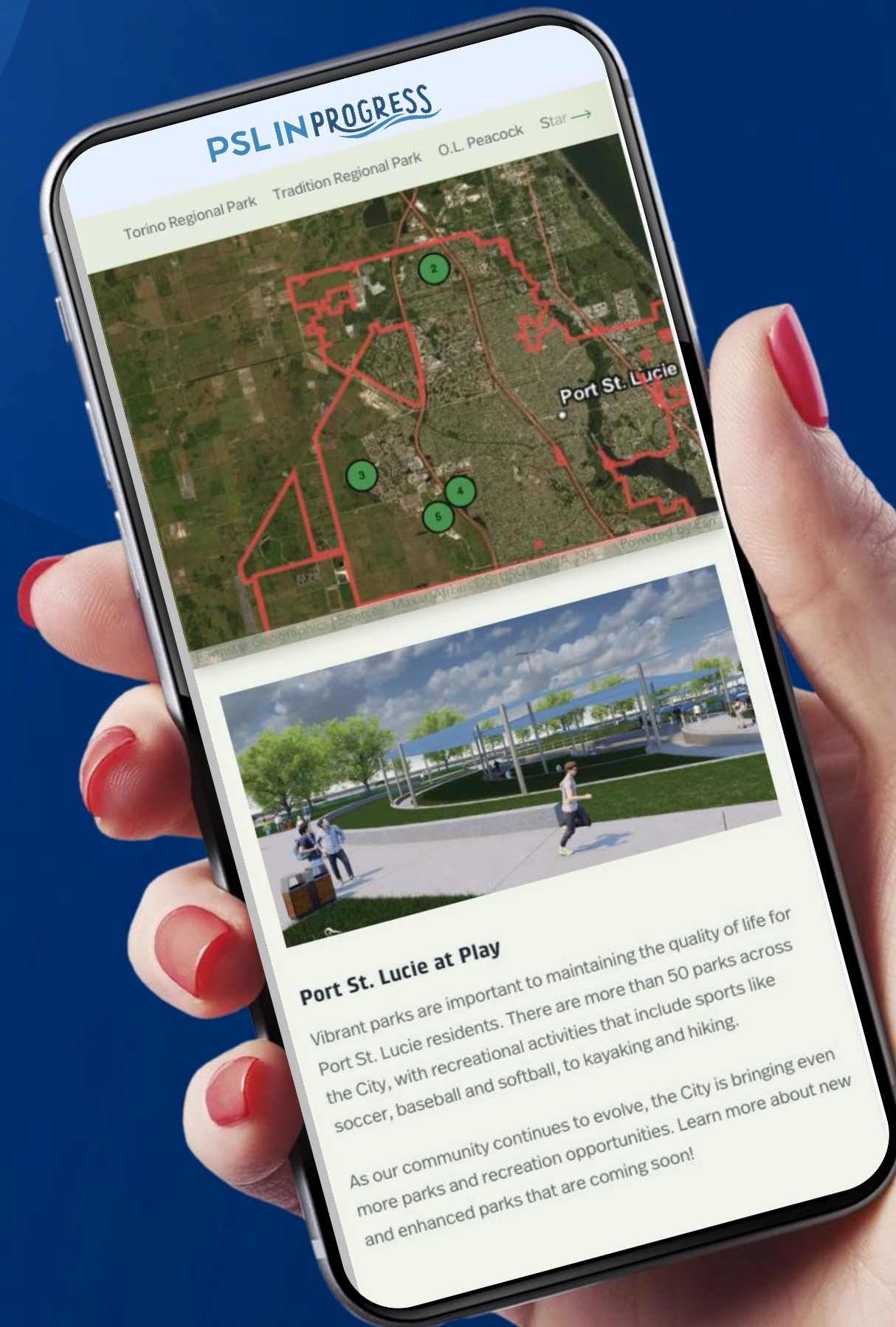
Showing the progress PSL is making.

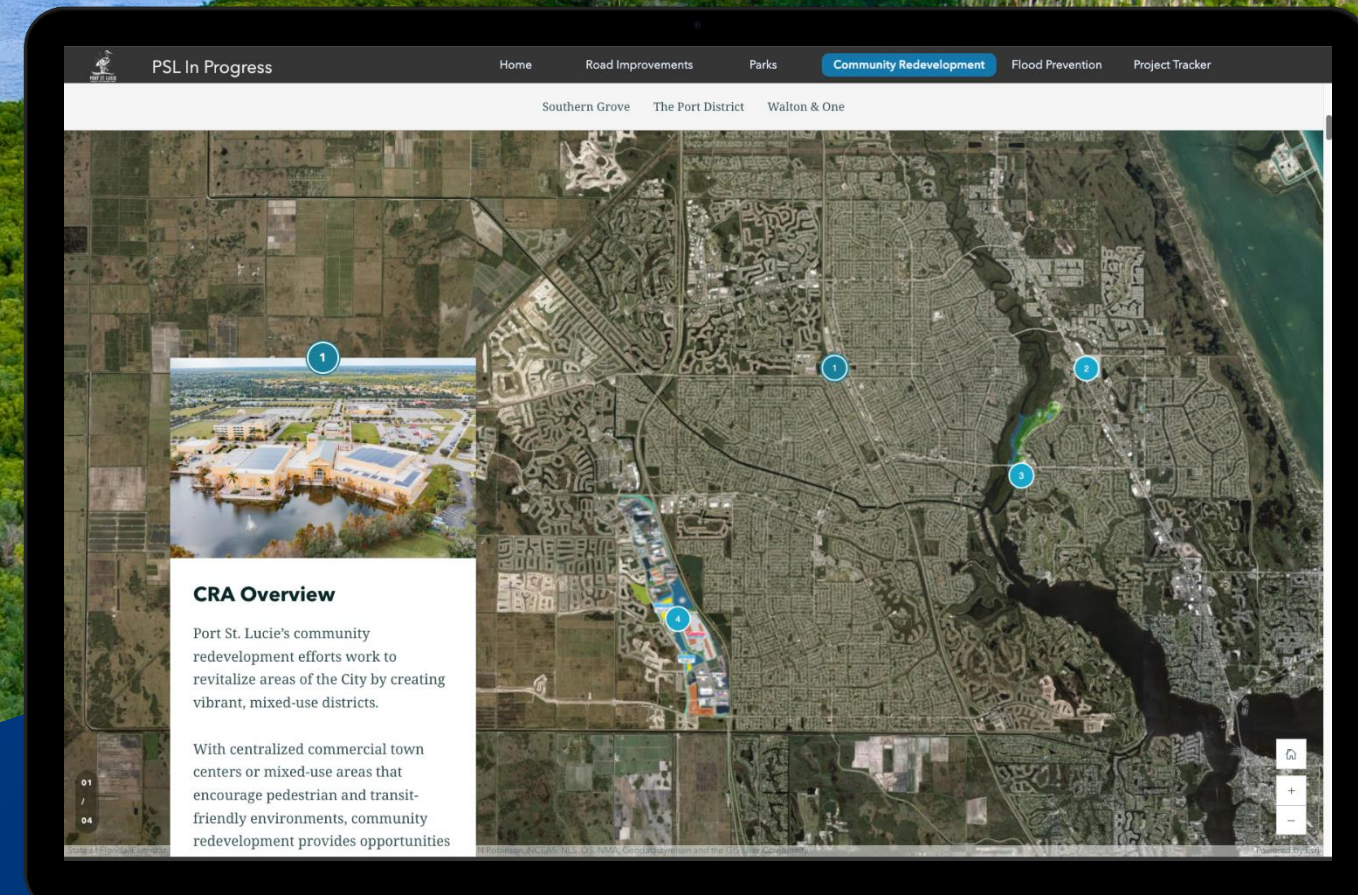
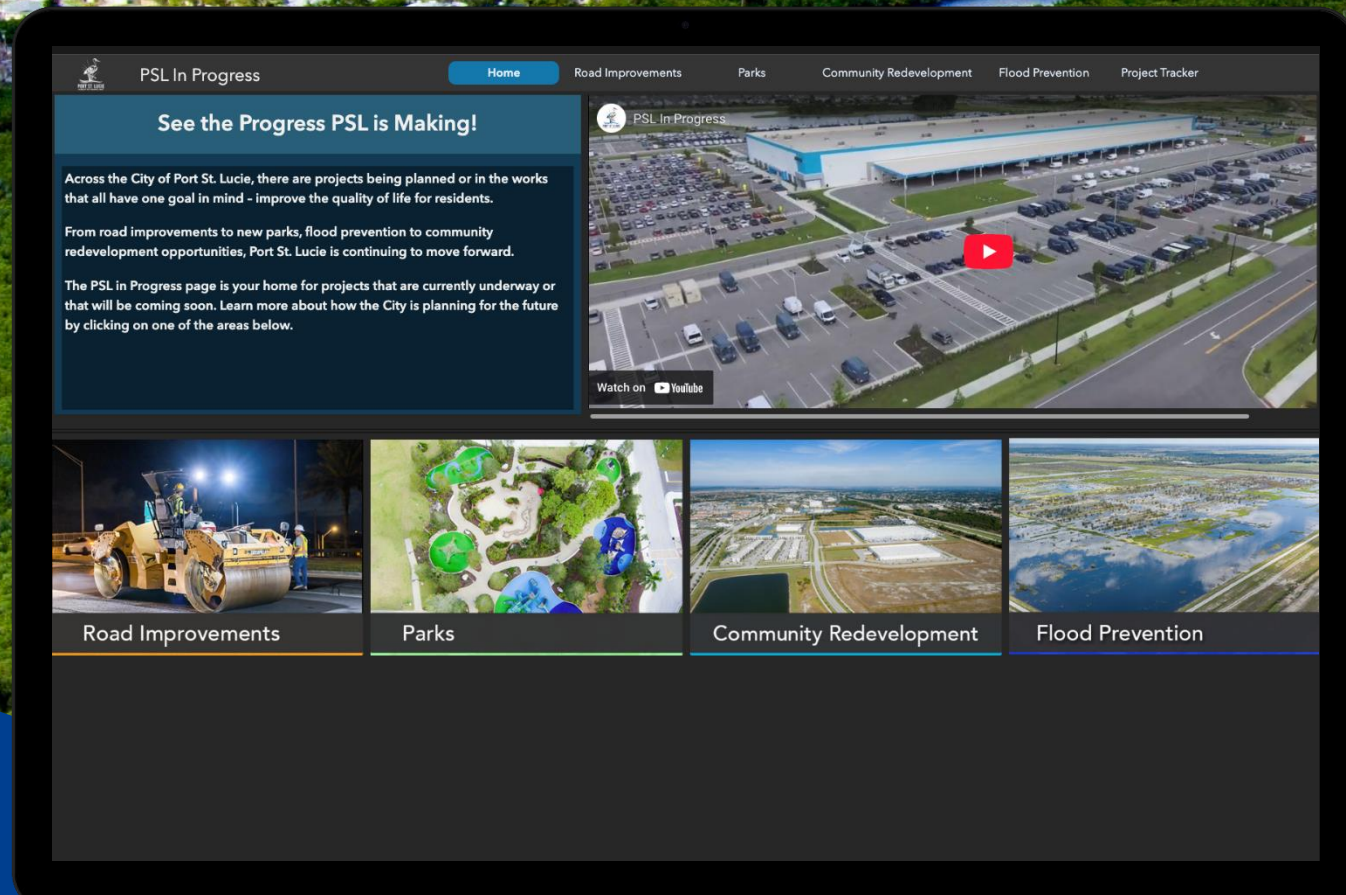
PSL in Progress is a tool to help residents understand our Capital Improvement projects.

A visual tool highlighting roads, parks, major stormwater, utility and CRA projects in a format that is easy to read, understand and digest.

Goal is to provide information while showing how the projects will improve quality of life for residents and provide clarity on what they can expect in the future.

Will be regularly updated.



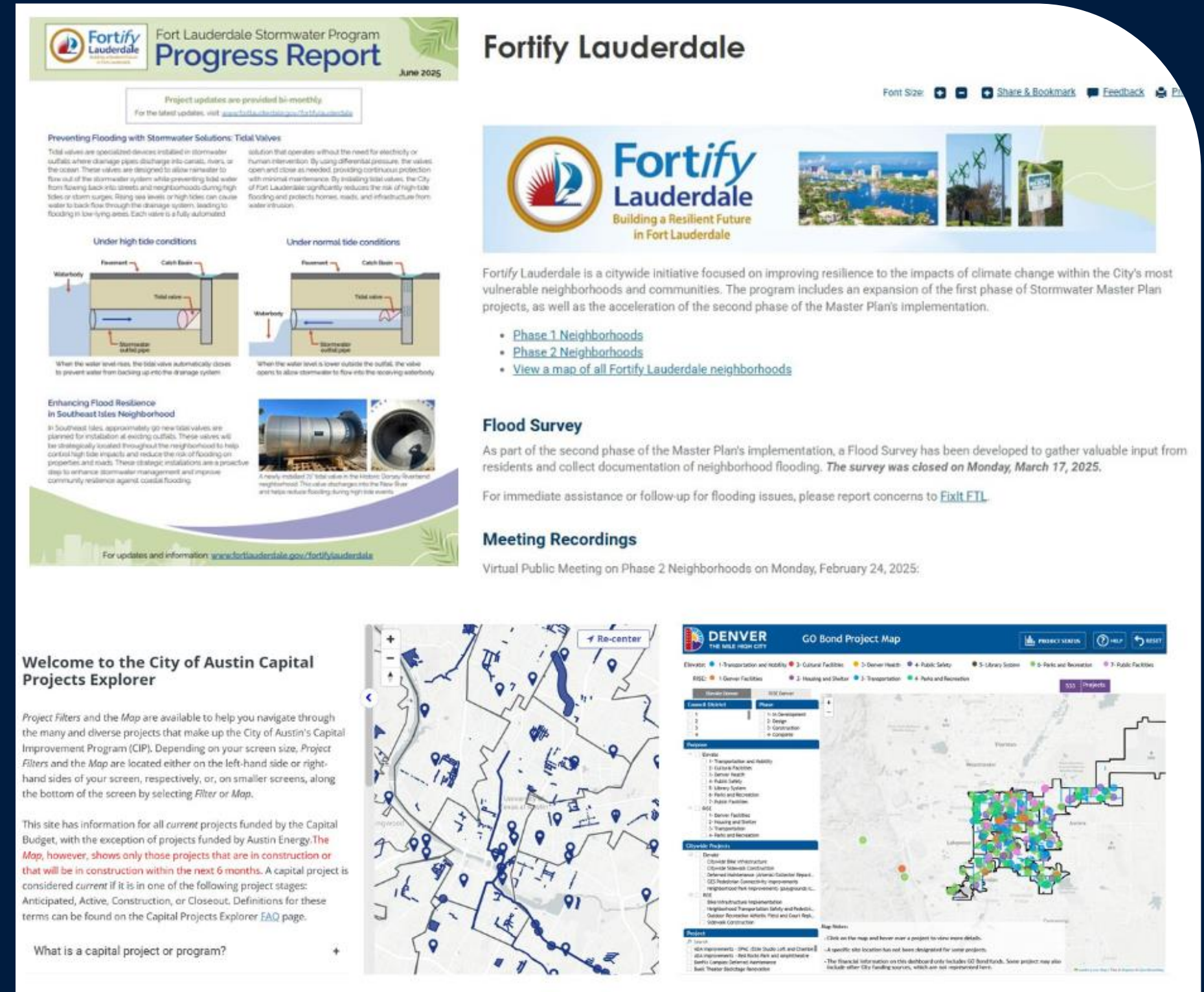


Road Improvements | Parks
Community Redevelopment
Flood Prevention | Utilities
Project Tracker

- Interactive maps with project information.
- Shows where projects are located in the City and specific details.
- Provides holistic look at infrastructure projects.

How are other cities showing their work?

- “Fortify Lauderdale”
 - Website
 - Newsletter
- Denver, Colorado
 - Bond project map
- Austin, Texas
 - Projects Explorer
- Other examples include:
 - Interactive maps
 - Video
 - Web assets





Sharing the information

PSL in Progress is a resource for City Council, City staff to share with the public.



PSL in Progress Branding



Pushing PSL in Progress to the Public

Let's see
PSL in
Progress in
PSLinProgress.com



CRA Overview

Port St. Lucie's community redevelopment efforts work to revitalize areas of the City by creating vibrant, mixed-use districts.

With centralized commercial town centers or mixed-use areas that encourage pedestrian and transit-friendly environments, community redevelopment provides opportunities