

EXTERIOR MATERIALS SCHEDULE AND IMAGES



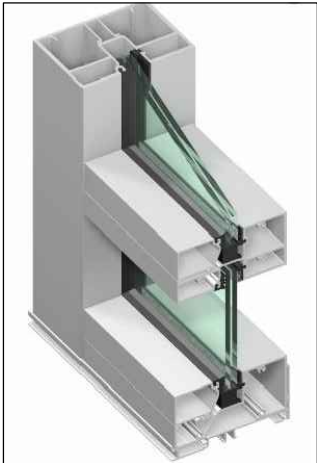
BLUE COLOR



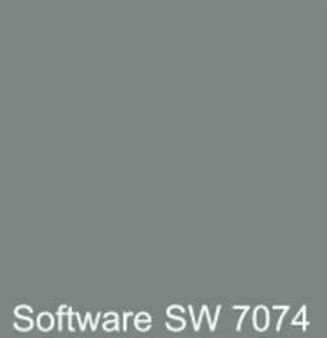
CORRUGATED METAL ROOFING



LIGHT GRAY COLOR



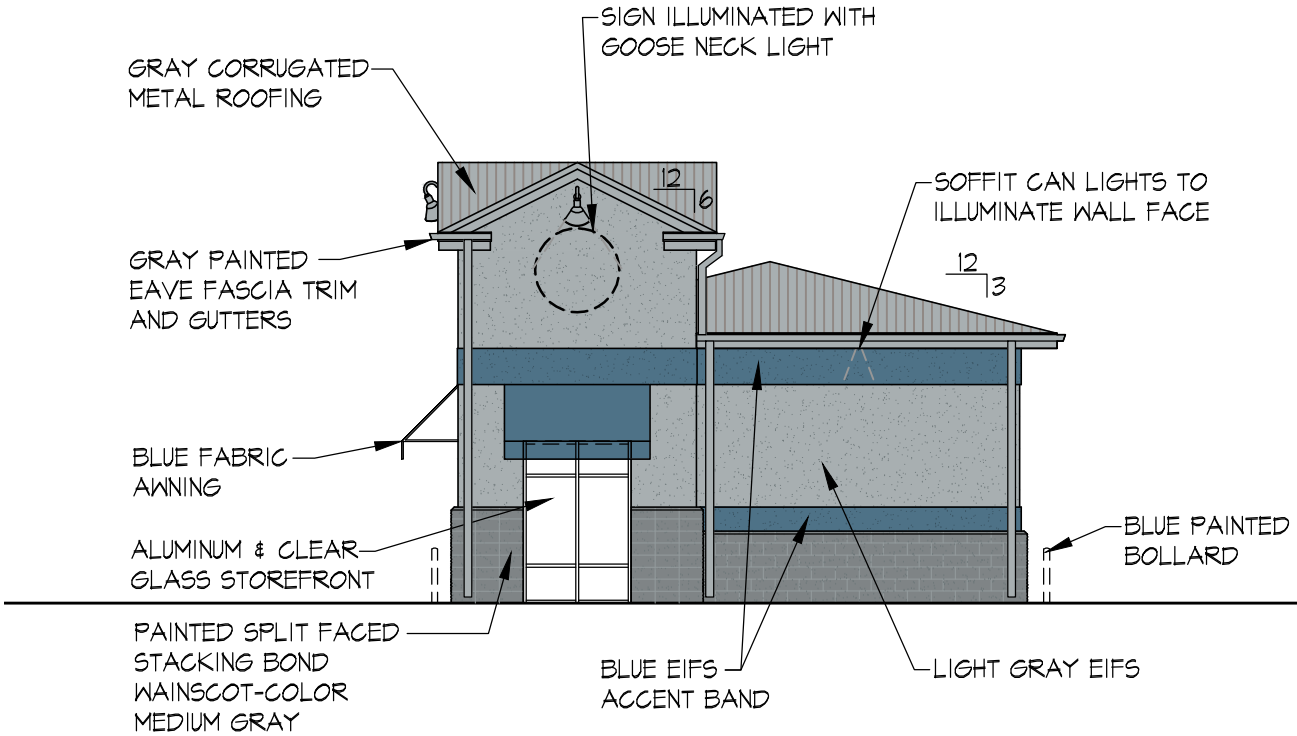
CLEAR ANODIZED ALUMINUM



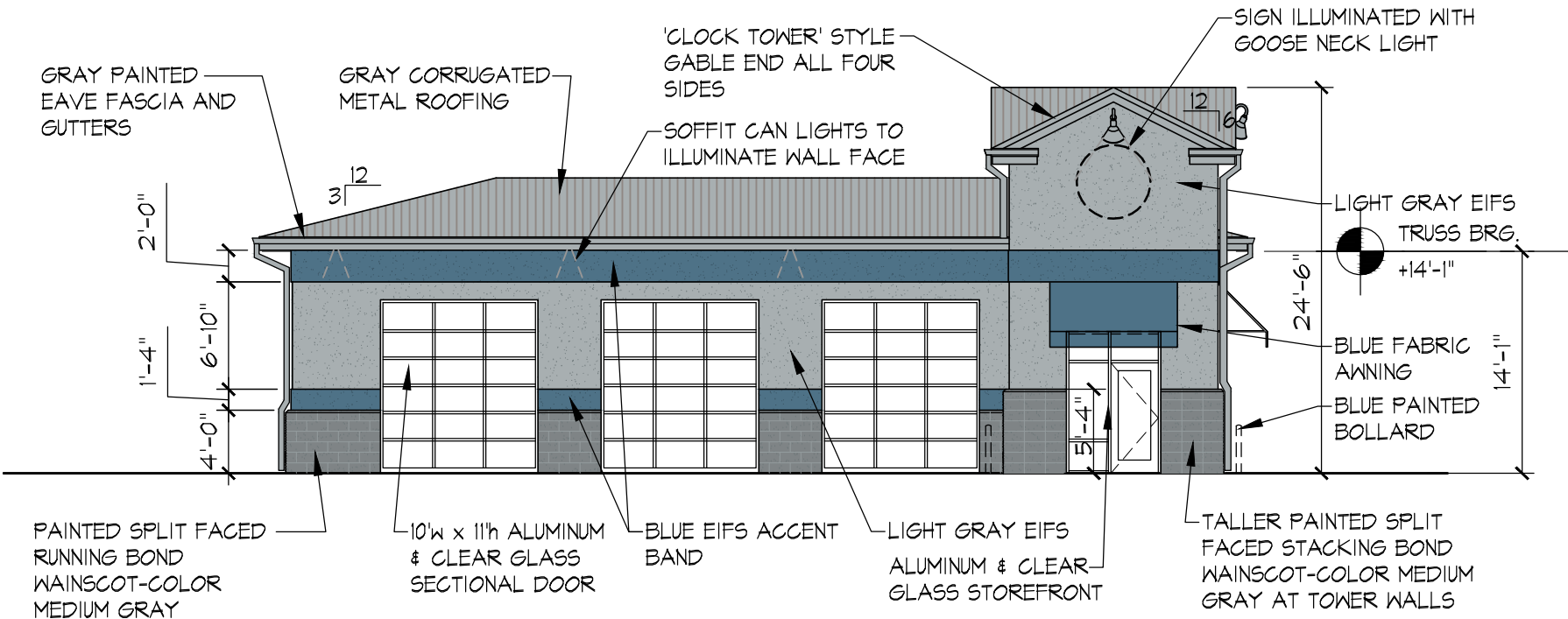
MEDIUM GRAY COLOR



SECTIONAL DOOR



2 RIGHT SIDE ELEVATION
SCALE: 3/32" = 1'-0"



1 FRONT ELEVATION
SCALE: 3/32" = 1'-0"

CITY OF PORT ST. LUCIE
PROJECT NO. (P22-036)
PSLUSD PROJECT NUMBER
(11-886-03)



architecture • interior design

421 Penman Street, Suite 200, Charlotte, NC 28203
Email: esd@esdarch.com • Phone: 704-373-1900

STRICKLAND BROTHERS
10 MINUTE OIL CHANGE
COLOR ELEVATIONS



DATE: 12-17-21

PROJECT #: 10-100

DRAWN BY: VW

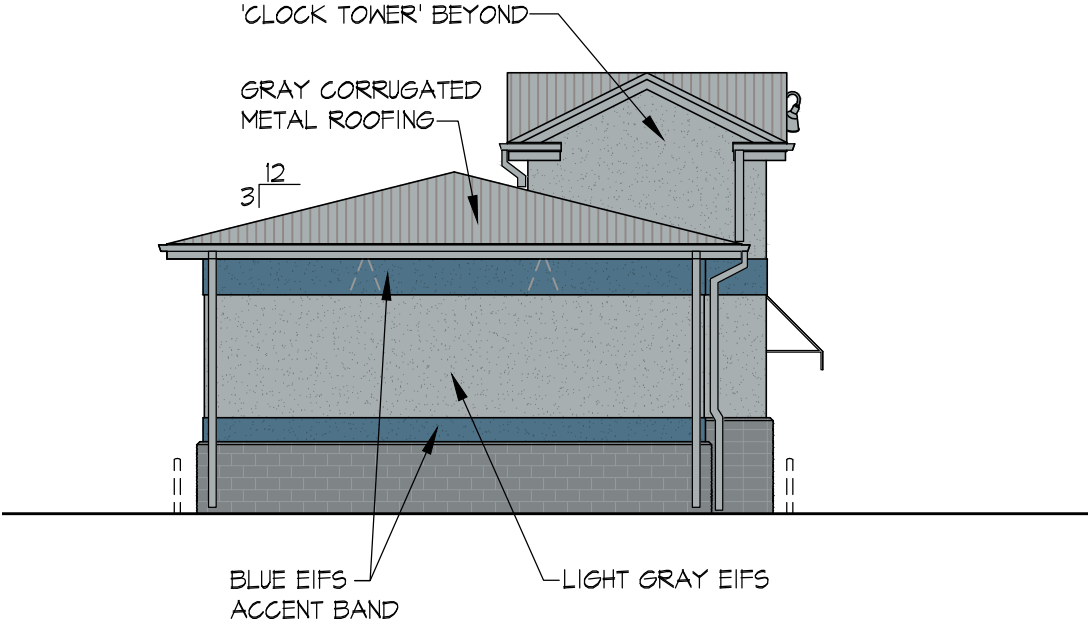
CADD FILE NAME:

THIS DRAWING AND THE DESIGN SHOWN ARE THE PROPERTY OF ESD. THE REPRODUCTION, OR USE OF THIS DRAWING WITHOUT THEIR WRITTEN CONSENT IS PROHIBITED. ANY INFRINGEMENT IS SUBJECT TO LEGAL ACTION.

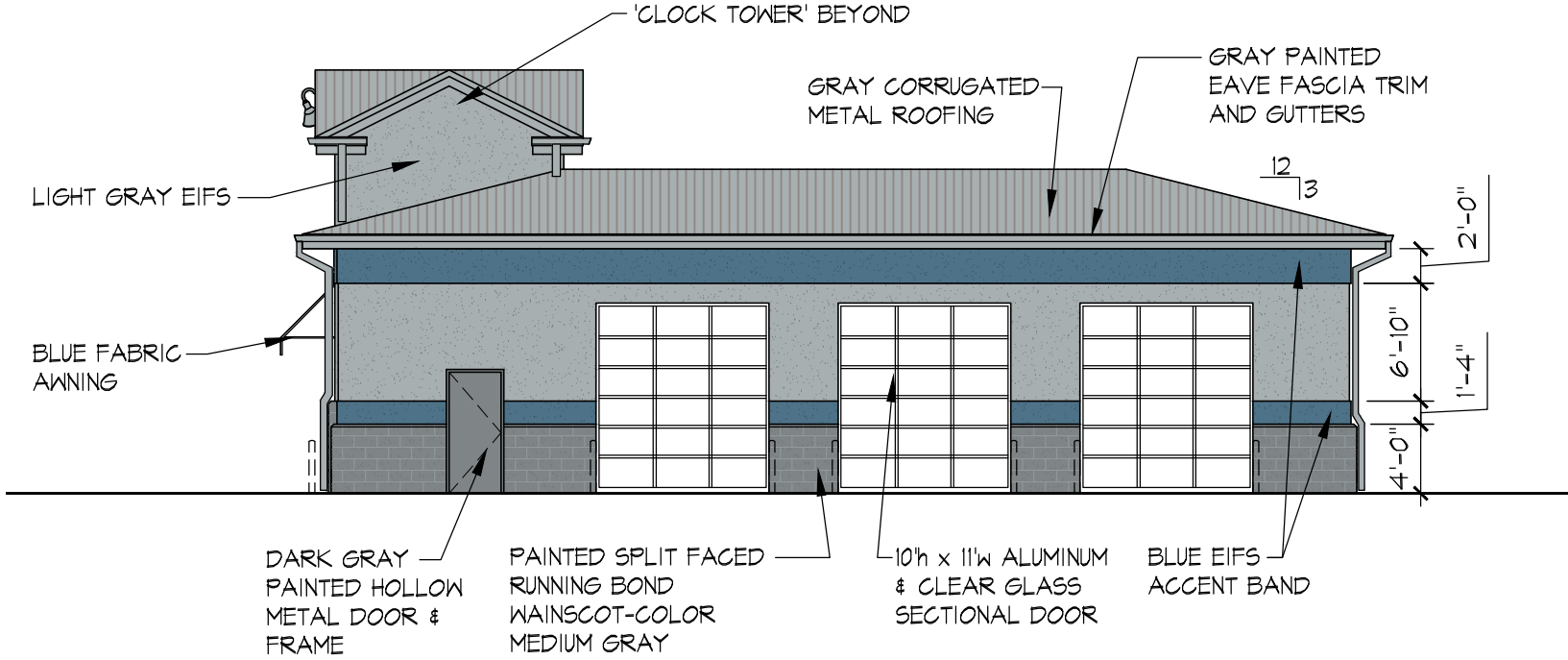
Sheet

A1

EXTERIOR MATERIALS SCHEDULE AND IMAGES ON PAGE 1



2 LEFT SIDE ELEVATION
SCALE: 3/32" = 1'-0"



1 REAR ELEVATION
SCALE: 3/32" = 1'-0"

CITY OF PORT ST. LUCIE
PROJECT NO. (P22-036)
PSLUSD PROJECT NUMBER
(11-886-03)



architecture • interior design

421 Penman Street, Suite 200, Charlotte, NC 28203
Email: esd@esdarch.com • Phone: 704-373-1900

STRICKLAND BROTHERS
10 MINUTE OIL CHANGE
COLOR ELEVATIONS



DATE: 12-17-21
PROJECT #: 10-100
DRAWN BY: VW
CADD FILE NAME:

THIS DRAWING AND THE DESIGN SHOWN ARE THE PROPERTY OF ESD. THE REPRODUCTION, OR USE OF THIS DRAWING WITHOUT THEIR WRITTEN CONSENT IS PROHIBITED. ANY INFRINGEMENT IS SUBJECT TO LEGAL ACTION.

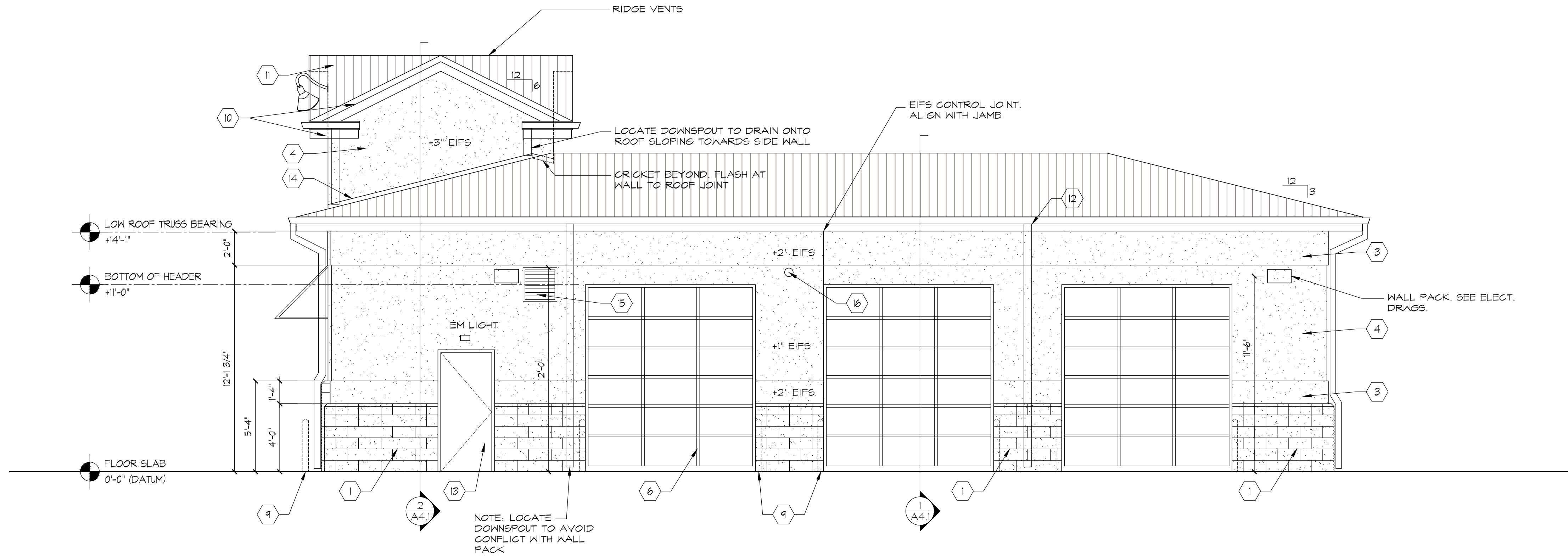
Sheet

A2

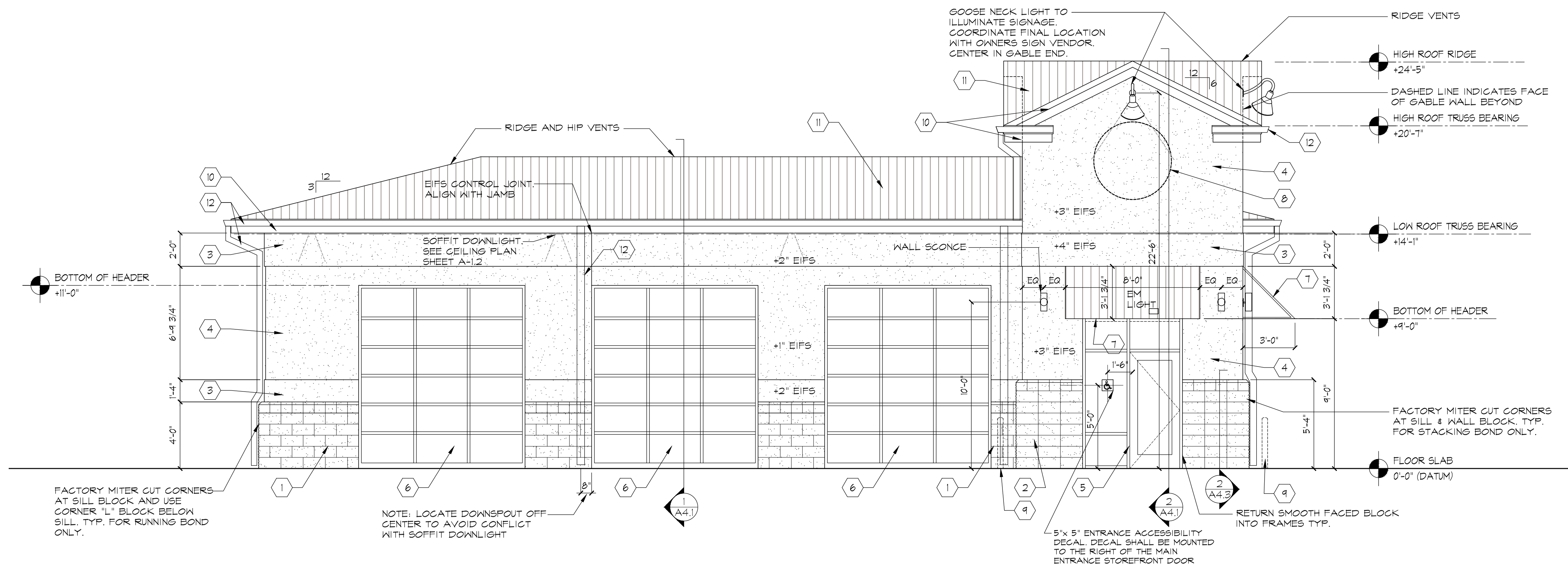
P:\CLIENT FILES\Strickland Brothers Oil Change\21-103-000-SB-TKC-Barboursville, WV\06-CD's-21-103-Barbavl\A-3.1, 3.2 ELEVATIONS.dwg, Plotted By: vvorontsoff, Plotted: Feb 16, 2021 - 10:11am

NOTE-A: ALL SIGNAGE/GRAPHICS ARE TO BE REVIEWED AND APPROVED BY LOCAL ZONING AUTHORITIES, PRIOR TO INSTALLATION.

NOTE-B: REFER TO EXTERIOR MATERIAL SCHEDULE ON SHEET A-3.2



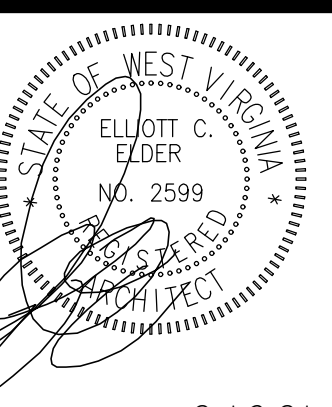
2 REAR ELEVATION
SCALE: 1/4"=1'-0"



1 FRONT ELEVATION
SCALE: 1/4"=1'-0"

THE ARCHITECT/ENGINEER DOES NOT DEFINE THE SCOPE OF INDIVIDUAL TRADES, SUBCONTRACTORS, MATERIAL SUPPLIERS, OR VENDORS. ANY SHEET NUMBERING SYSTEM USED WHICH IDENTIFIES DISCIPLINES IS SOLELY TO SEPARATE ARCHITECT'S AND ENGINEER'S SCOPE. IT DOES NOT DEFINE A SUBCONTRACTOR'S SCOPE OF WORK. ANY DISCREPANCIES BETWEEN DRAWINGS, SPECIFICATIONS, CODES OR CONSTRUCTION SEQUENCING SHALL BE BROUGHT TO THE ATTENTION OF THE ARCHITECT PRIOR TO PROCEEDING. NO CONSIDERATION WILL BE GIVEN TO REQUESTS FOR CHANGE ORDERS FOR FAILURE TO OBTAIN AND REVIEW THE COMPLETE SET OF CONSTRUCTION DOCUMENTS, OR FOR FAILURE TO SEEK INTERPRETATION FROM ARCHITECT FOR DISCREPANCIES.

STRICKLAND BROTHERS
10 MINUTE OIL CHANGE



ISSUE DATE: 2-16-21

REVISION 1: --
REVISION 2: --
REVISION 3: --
REVISION 4: --

PROJECT #: 21-103
CONTENT: EXTERIOR ELEVATIONS

PROJECT ARCHITECT: ECE

DRAWN BY: VW

CADD FILE NAME:
21-103\CDSA-3.1

THIS DRAWING AND THE DESIGN SHOWN ARE THE PROPERTY OF SAM'S XPRESS CAR WASH, LLC. THE REPRODUCTION, OR USE OF THIS DRAWING WITHOUT THEIR WRITTEN CONSENT IS PROHIBITED. ANY INFRINGEMENT IS SUBJECT TO LEGAL ACTION.

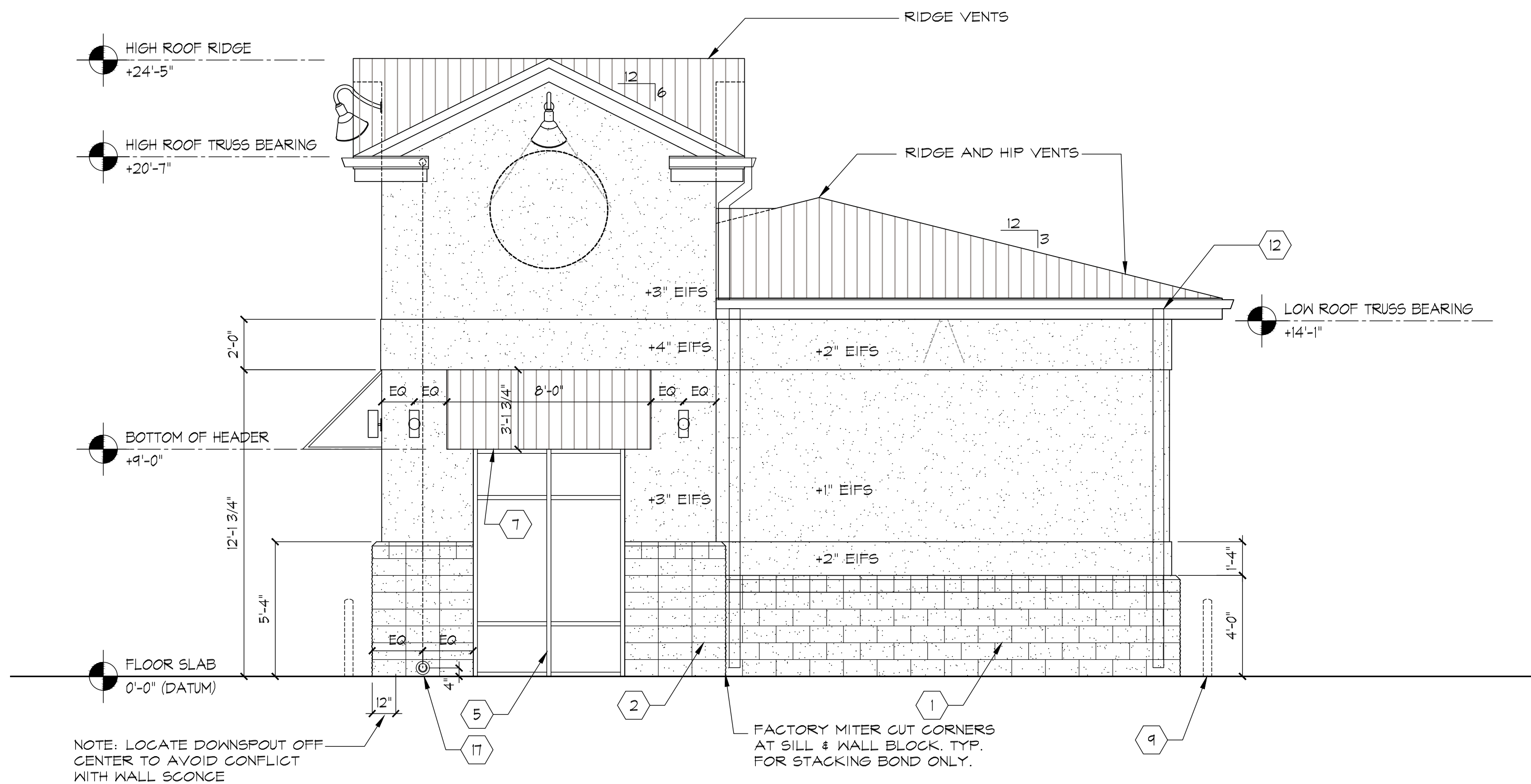
Sheet
A-3.1

CITY OF PORT ST. LUCIE PROJECT NO. (P22-036)
PSLUSD PROJECT NUMBER (11-886-03)

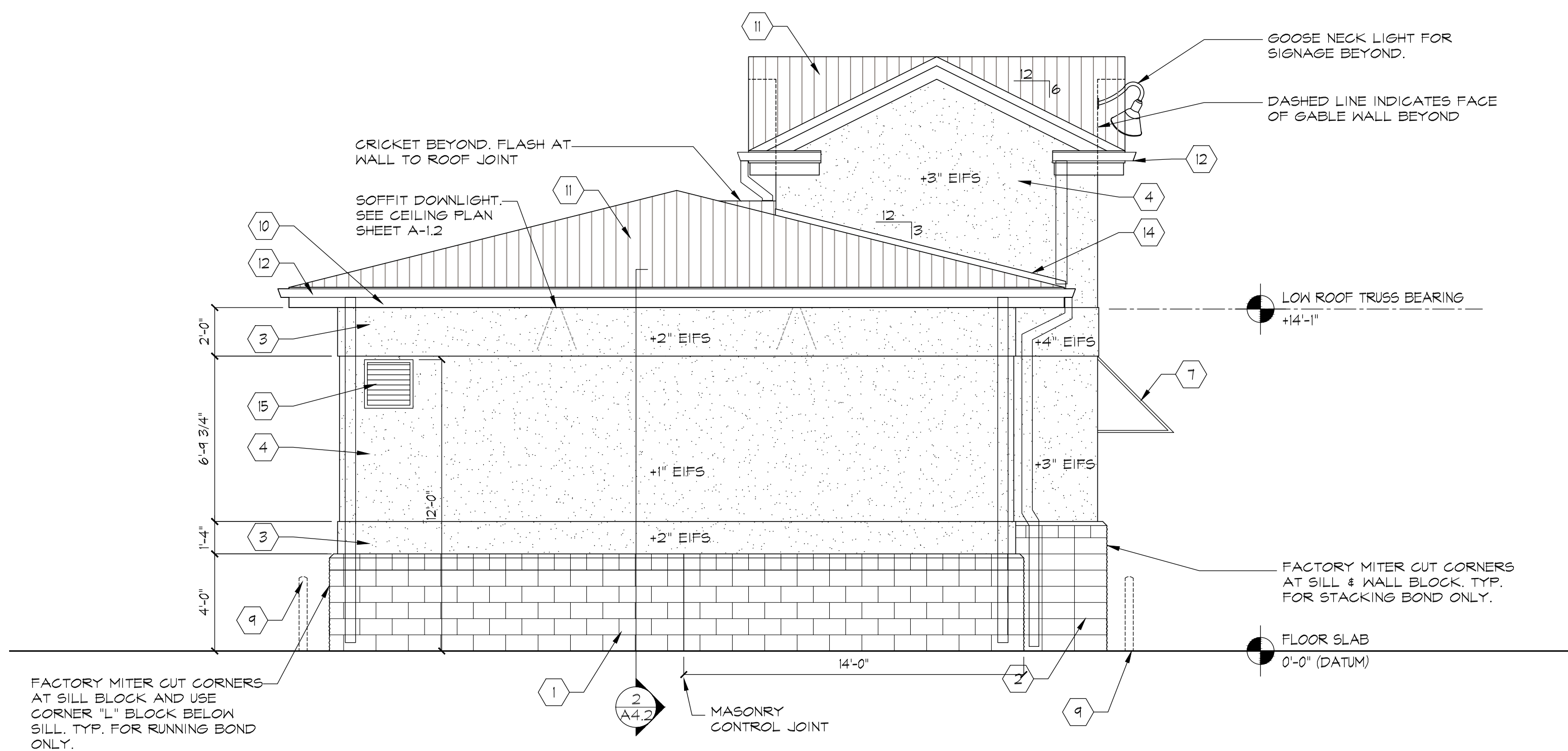
421 Penman Street, Suite 200, Charlotte, NC 28203
Email: esd@essarch.com • Phone: 704-373-1900

essarch interior design

P:\CLIENT FILES\Strickland Brothers Oil Change\21-103-000-SB-TKC-Barboursville, WV\06-CD's-21-103-Barbsvl\A-3.1, 3.2 ELEVATIONS.dwg, Plotted By: vworontsoff, Plotted: Feb 16, 2021 - 10:11am



2 RIGHT ELEVATION
SCALE: 1/4"=1'-0"



1 LEFT ELEVATION
SCALE: 1/4"=1'-0"

EXTERIOR MATERIAL SCHEDULE

KEY	MATERIAL	MANUFACTURER	MODEL	COLOR	NOTES
1	SPLIT FACED BLOCK VENEER, RUNNING BOND WITH MATCHING CHAMFERED SILL	JOHNSON CONCRETE PRODUCTS, CHUCK VOGEL-T04-636-5231	3-5/8"W X 15 5/8"L X 1-5/8"H-WALL 5 5/8"W X 15/8"L X 1 5/8"H SILL WITH 2"X2" CHAMFER	PAINT SW-7074-SOFTWARE	
2	SPLIT FACED BLOCK VENEER, STACKING BOND WITH MATCHING CHAMFERED SILL	JOHNSON CONCRETE PRODUCTS, CHUCK VOGEL-T04-636-5231	3-5/8"W X 15 5/8"L X 1-5/8"H-WALL 5 5/8"W X 15/8"L X 1 5/8"H SILL WITH 2"X2" CHAMFER	PAINT SW-7074-SOFTWARE	
3	DRAINABLE EIFS (EXTERIOR INSULATING FINISH SYSTEM) BLUE ACCENT BAND	STO CORP.	StoTherm C1 Essence INSULATED WALL CLADDING SYSTEM	SW-9149, INKY BLUE StoPowerwall FINE (80296)	
4	DRAINABLE EIFS (EXTERIOR INSULATING FINISH SYSTEM) FIELD COLOR	STO CORP.	StoTherm C1 Essence INSULATED WALL CLADDING SYSTEM	SW-6234, UNCERTAIN GRAY StoPowerwall FINE (80296)	
5	ALUMINUM STOREFRONT	KAWNEER	TRIFAB V6451T SSS	CLEAR ANODIZED ALUMINUM	SEE GLAZING SCH.
6	ALUMINUM & GLASS OVERHEAD GARAGE DOOR	CLOPAY OR OWNER APPROVED EQUAL	MODEL 904	CLEAR ANODIZED ALUMINUM	SEE GLAZING SCH.
7	ALUMINUM FRAMED & METAL R-PANEL COVERED AWNING	FRENCH AWNING & SCREEN CO. INC. (601-922-1132-TOM WALLAGE) OR OWNER APPROVED EQUAL.	MODEL 904-AWNING VENDOR TO DESIGN AND PERMIT SEPARATELY.	CLEAR ANODIZED ALUMINUM FRAME, R-PANEL TO MATCH METAL ROOF COLOR	
8	SIGNAGE BY OWNER, GC TO PROVIDE REQUIRED BLOCKING SUPPORT		SIGNAGE TO BE PERMITTED SEPARATELY		
9	PAINTED STEEL BOLLARD		SEMI-GLOSS	SW-SAFETY YELLOW	
10	PVC FASCIA TRIM	AZEK	WIDTH VARIES	PAINT TO MATCH METAL ROOF COLOR	
11	CORRUGATED METAL PANELED ROOFING	BERRIDGE	R-PANEL WITH EXPOSED FASTENERS	CHARCOAL GRAY	
12	ALUMINUM GUTTERS AND DOWNSPOUTS	ALCOA	5" PREFORMED ALUMINUM OGEE COLONIAL (K-STYLE)	COLOR TO MATCH METAL ROOF COLOR	NOTE-1, 2, 3
13	HOLLOW METAL DOOR & FRAME		SEMI-GLOSS	PAINT SW-7074-SOFTWARE	
14	WALL/ROOF FLASHING			MATCH ROOFING COLOR	
15	ALUM. LOUVER			SEE MECH. DRWG'S FOR COLOR, SEAL AROUND PENETRATION	
16	PIT EXHAUST PORT			MATCH WALL COLOR	
17	CONCEALED GUTTER DRAIN DOWN TO 4" DIA. BRASS LAMB'S TONGUE SPOUT				

EXTERIOR MATERIAL FINISH NOTES:

- 1- SECURE DOWNSPOUTS TO WALL PER MFRS. RECOMMENDED ATTACHMENT SYSTEM AND SPACING. DOWNSPOUT TO FOLLOW PROFILE OF WALL MATERIALS.
- 2-PROVIDE CONCRETE SPLASH BLOCKS AT ALL DOWNSPOUTS TO DRAIN AWAY FROM BUILDING. REFER TO CIVIL DRWG'S.
- 3-PROVIDE EAVE GUTTERS SLOPED MIN. $\frac{1}{8}$ " PER FOOT TO DOWNSPOUTS.

GENERAL EXTERIOR FINISH NOTES:

- 1-CONTRACTOR TO COORDINATE WITH SIGN VENDOR FOR MOUNTING DETAILS AND EXACT DIMENSIONS AND MOUNTING HEIGHTS. CONTRACTOR TO PROVIDE NECESSARY BLOCKING AND SUPPORT/ FRAMING CONNECTIONS ACCORDINGLY.
- 2-THE WORD "PROVIDED" SHALL MEAN SUPPLIED AND INSTALLED.
- 3-PROVIDE SAMPLES OF COLORS AND TEXTURES FOR OWNERS & ARCHITECTS APPROVAL.

NOTE: ALL SIGNAGE/GRAPHICS ARE TO BE REVIEWED AND APPROVED BY LOCAL ZONING AUTHORITIES, PRIOR TO INSTALLATION.

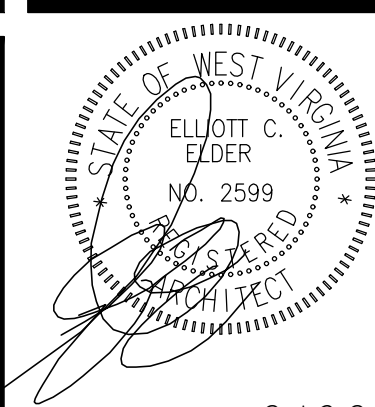
CITY OF PORT ST. LUCIE PROJECT NO. (P22-036)
PSLUSD PROJECT NUMBER (11-886-03)



architecture • interior design

421 Penman Street, Suite 200, Charlotte, NC 28203
Email: esd@esdarch.com • Phone: 704-373-1900

STRICKLAND BROTHERS
10 MINUTE OIL CHANGE



2-16-21

ISSUE DATE: 2-16-21

REVISION 1: --

REVISION 2: --

REVISION 3: --

REVISION 4: --

PROJECT #: 21-103

CONTENT: EXTERIOR ELEVATIONS

PROJECT ARCHITECT: ECE

DRAWN BY: VW

CADD FILE NAME: 21-103CDSA-32

THIS DRAWING AND THE DESIGN SHOWN ARE THE PROPERTY OF SAM'S EXPRESS CAR WASH, LLC. THE REPRODUCTION, OR USE OF THIS DRAWING WITHOUT THEIR WRITTEN CONSENT IS PROHIBITED. ANY INFRINGEMENT IS SUBJECT TO LEGAL ACTION.

Sheet

A-3.2