



CITY OF PORT ST. LUCIE
 CITY CLERK'S OFFICE
 121 SW PORT ST. LUCIE BLVD.
 PORT ST. LUCIE, FL 34984-5099
 772-871-5157

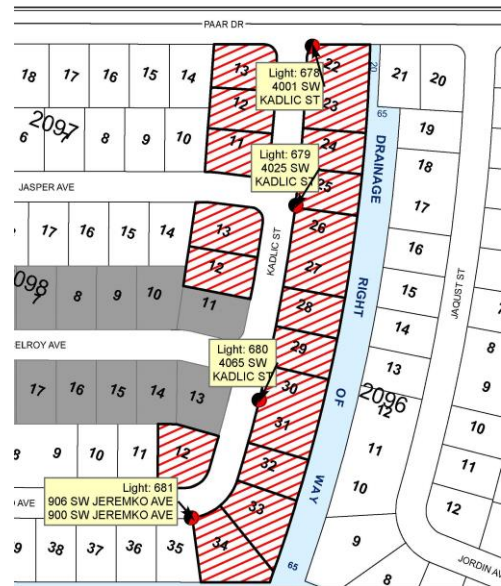
NOTICE OF PUBLIC HEARING
 NEW RESIDENTIAL STREET LIGHTING ASSESSMENT AREA FOR FISCAL YEAR 2022/2023
 CITY COUNCIL MEETING

July 11, 2022, AT 6:30 P.M., CITY HALL
 121 SW PORT ST. LUCIE BOULEVARD
 PORT ST. LUCIE, FLORIDA

The lots listed below are in an area balloted and passed by a majority of the property owners returned ballots. The City contemplates levying an assessment estimated at \$26.00 per lot. Payment will be on a yearly basis and collected by the St. Lucie County Tax Collector. This assessment will be included in your November 2023 tax bill on the non-advallorem portion of your tax bill. A description of the properties specially benefited (by section, block and lot) and a map showing the location of the street lighting is as follows:

STREET LIGHTING ASSESSMENT AREA
 BOUNDARY #620
 SW KADLIC STREET – SECTION 21

BLOCK	2096	LOTS	22 THRU	34
BLOCK	2097	LOTS	11 THRU	13
BLOCK	2098	LOTS	12 THRU	13
BLOCK	2099	LOT	12	



The public hearing will be held in the City Council Chambers at 6:30 p.m. on July 11, 2022, or as soon thereafter as the matter may be heard, located at the City of Port St. Lucie Municipal Complex (City Hall), 121 S.W. Port St. Lucie Blvd., Port St. Lucie, Florida 34984 for receiving public comment on the proposed collection of the assessments. All affected property owners have a right to appear at the hearing and may file written objections with the Council in care of the City Clerk prior to the meeting. Written objections may also be filed with the City Clerk at the hearing any time before the adjournment of the hearing. If a person decides to appeal any decision made by the Council with respect to any matter considered at the hearing, such person will need a record of the proceedings and may need to arrange for a court reporter to ensure that a verbatim record is made. In accordance with the Americans with Disabilities Act, persons needing special accommodations or an interpreter to participate in this proceeding should contact the City Clerk's office at 772-871-5157, at least seven days prior to the date of the hearing.

Copies of the assessment roll, showing the amount of the assessment to be imposed against each parcel of property, and the legal documentation relating to the assessment is available for inspection in the office of the City Clerk, located on the Third Floor of City Hall, 121 S.W. Port St. Lucie Blvd., Port St. Lucie, Florida.

The assessments will be collected on the non-ad valorem portion of the tax bill to be mailed by the St. Lucie County Tax Collector in November 2023. Failure to pay the assessment will cause a tax certificate to be issued against the property, which may result in a loss of title to your property. Based on a successful vote of the 5 Residential Street Lighting Areas to be approved with the July 11, 2022, Resolution, the estimated revenue generated to pay for the yearly street lighting of those

5 areas is approximately \$3,978. If you have any questions, please contact the City of Port St. Lucie City Attorney's Office at 772-871-5294, Monday through Friday between 8:00 a.m. and 5:00 p.m.

Sally Walsh, City Clerk

Legal Ad Published on June , 2022