

**LANDSCAPE COMPLIANCE**

10' Perimeter Landscape Strip= 1 Tree / 30lf Hedge @ 24" Ht. / 2' oc Adjacent parking

**North-Vehicular Combines with Perimeter**  
200'-50(drives)150' / 30' = 5 Trees  
Complies with 1 new and 4 saved  
Continuous Parking hedge @ 2'oc. (75 complies)

**West-Vehicular (partial) Combines with Perimeter**  
165' / 30' = 6 Trees (complies) with 8 saved  
Shrubs >83 (complies)

**East-Vehicular (partial) combines with Perimeter**  
165' / 30' = 6 trees (complies) with 5 saved  
Shrubs >83 (complies)

**South 250' / 30' = 08 Trees (complies)**  
No planting in 6' PUDE  
Shrubs 66 VIBURNUM

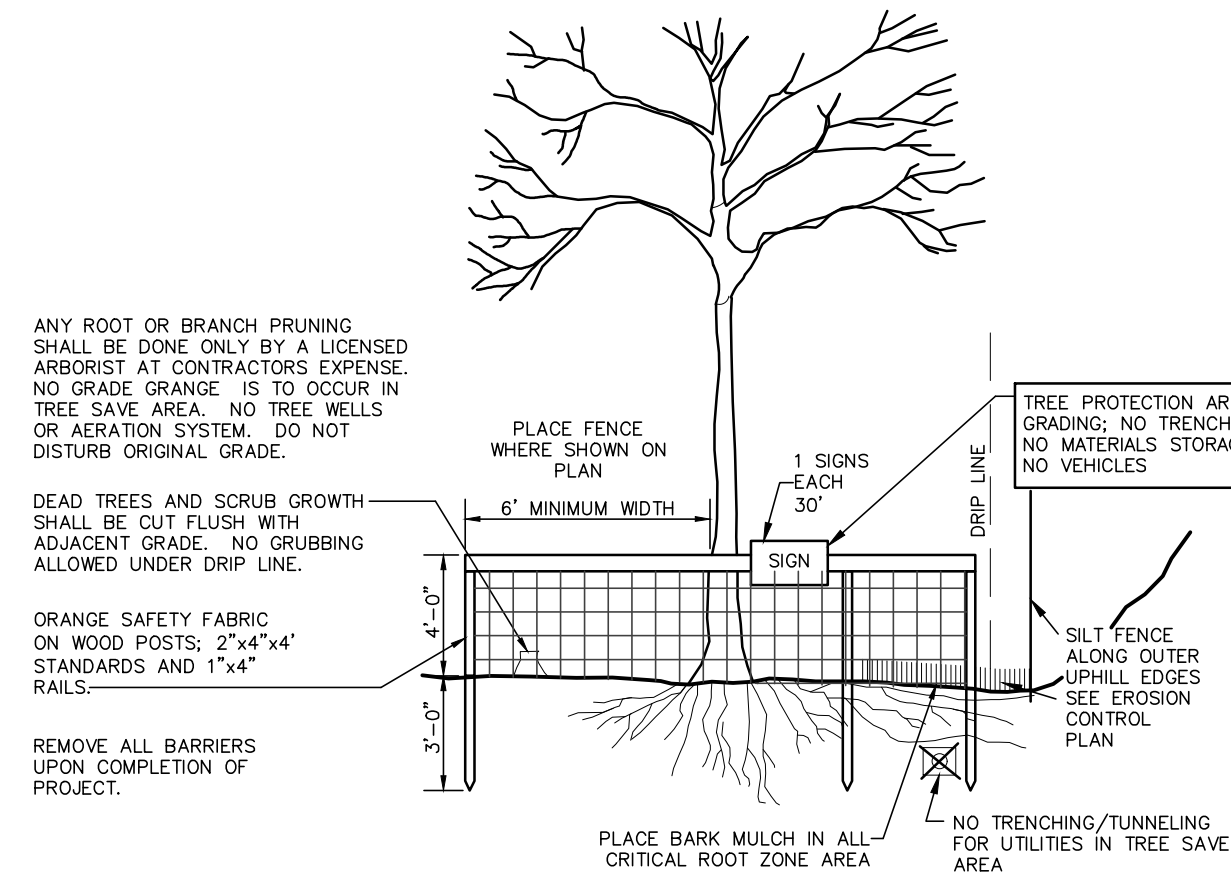
**Building Perimeter Landscape**  
1 Tree / 30lf + 1 shrub /2lf  
540' / 30lf = 18 Trees (complies)  
93 Shrubs (combined with south LS)

**TREE LIST**

- 06 QUEENSLAND CRAPE MYRTLE - Lag. Indica speciosa  
2.5" CAL. 14' Ht. / 5' Crown Spread (Type 'A' not native flowering)
- 02 BALD CYPRESS - TAXODIUM distichum  
2.5" CAL. 14' Ht. / 5' Crown Sp. (Type 'A' Native)
- 05 LIVE OAK - QUERCUS virginiana  
3" CAL. 14' Ht. / 6' Crown Sp. (Type 'A' Native)
- 05 RED MAPLE - Acer rubrum 2.5" Cal. 5' Crown Spread. (Native Type 'A')
- 01 'D.D. BLANCHARD' MAGNOLIA- (Type 'A' Native)  
MAGNOLIA grandiflora 'D.D. BLANCHARD'  
3" CAL., 14' Ht. / 5' Spread Min., Full to ground
- 19 SWEET BAY MAGNOLIA - Magnolia virginiana  
2.5" Cal. STANDARD (Type 'A' Native)
- 6 NON-NATIVE TYPE 'A'
- 33 NATIVE TYPE 'A' OR 85%

- TREE SAVE**
- 504 Slash P. 15"
  - 503 Slash P. 6"
  - 497 Slash P. 10"
  - 496 Oak 10"
  - 494 Slash P.12"
  - 483 Slash P.16"
  - 482 Slash P.14"
  - 479 Oak 6"
  - 480 Slash 15"
  - 374 Oak 6"
  - 372 Oak 8"
  - 371 Oak 9"
  - 370 Oak 9"
  - 424 Oak 5"
  - 543 Oak 6"
  - 534 Oak 6"
  - 535 Oak 6"
  - 531 Oak 5"
  - 18 Tr. 174" Saved

Total Trees Removed  
(Australian Pine NIC, invasive)  
190 Trees/1,794" Total Removed  
18 Trees/174" Saved  
172 Trees/1,620" Adjusted Removed

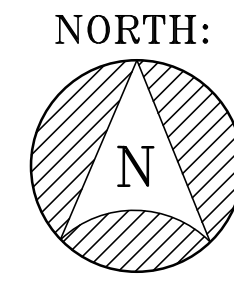


**TREE PROTECTION FENCE DETAIL**

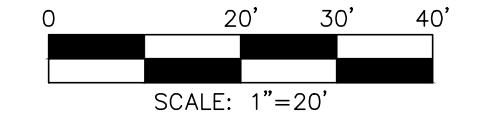
NOT TO SCALE  
DESTRUCTION/DEATH OF TREE DUE TO CONTRACTOR OPERATIONS WILL REQUIRED "RECOMPENSE" PLANTING, AT CONTRACTOR EXPENSE.

**PSLUSD NOTES**

1. NO LANDSCAPING SHALL BE PLANTED IN A MANNER THAT WOULD ADVERSELY AFFECT UTILITY EASEMENTS. LANDSCAPING SHALL BE IN COMPLIANCE WITH CHAPTER 154 OF THE CITY OF PORT ST.LUCIE CODE OF ORDINANCE, PSLUSD TECHNICAL SPECIFICATIONS AND POLICIES.
2. ALL LANDSCAPING WITHIN CITY UTILITY EASEMENTS SHALL COMPLY WITH PSLUSD TECHNICAL SPECIFICATIONS, POLICIES, AND CODES.
3. ALL LANDSCAPING SHALL MEET THE LATEST PSLUSD LANDSCAPE POLICY AND SHALL NOT BE PLACED IN A MANNER THAT WOULD CREATE CONFLICTS WITH THE INTENDED OPERATION AND MAINTENANCE OF ANY EXISTING UTILITY.
4. TREES SHALL NOT BE PLANTED WITHIN TEN (10) FEET OF ANY PSLUSD UNDERGROUND INFRASTRUCTURE.
5. NO LANDSCAPING OTHER THAN SOD GRASSES MAY BE PLANTED WITHIN A 5' RADIUS OF MAINTENANCE AREA OF ANY PSLUSD APPURTENANCE SUCH AS WATER METERS, BACK-FLOW DEVICES, FIRE HYDRANTS, SANITARY SEWER CLEANOUTS, AND MANHOLES, ETC. .

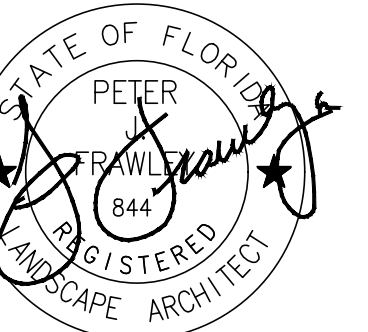


SCALE:



**REVISIONS:**

DATE	#
04-25-23	
10-27-23	



**PETER FRAWLEY**  
LANDSCAPE ARCHITECT  
675 SEMINOLE AVE (SUITE 101)  
ATLANTA, GA 30307 (404) 874-5091

**DWYER AVE STORAGE**  
792 SW DWYER AVE & 1210 SW BILTMOR ST.  
PORT ST. LUCIE  
PORT ST. LUCIE Proj. # P22-310/Utilities 11-491-00

(TREE) LANDSCAPE PLAN

SCALE: AS SHOWN

DATE: 02/09/2023

PROJECT: 23003

SHEET

L-1

Manufactured By:

## VILLA ROOT BARRIER, INC.

### DUAL PURPOSE PANELS

90° Rib with U.V. Inhibitors  
Extruded Female End  
Extruded Male End

**SPECIFICATIONS**

MATERIAL: HIGH DENSITY RECYCLED POLYETHYLENE WITH VILLA MALE/FEMALE CONNECTION 8x30" RIB EVERY 6"	TEST METHOD	TYPICAL VALUE
DENSITY	D 1505	
MELT INDEX	D 1238	
TENSILE STRENGTH @ YIELD (2"/MIN.)	D 638	4200 PSI
ELONGATION @ BREAK (2"/MIN.)	D 638	10%
TENSILE MODULUS	D 638	195,000 PSI
ELASTICITY @ BREAK (2"/MIN.)	D 790	225,000 PSI
FLEXURAL MODULUS 2	D 747	280,000 PSI
STIFFNESS IN FLEXURE	D 256	6.5 FT. LB. / IN.
NOTCHED IZOD IMPACT STRENGTH	D 2340	123 FT. LB. / IN. 2
TENSILE IMPACT STRENGTH	D 1525	68
HARDNESS (SHORE D)	D 746	271° F
VICAT SOFTENING POINT	DV 643	< 103° F
BRITTLINESS TEMPERATURE		
DEFLECTION TEMPERATURE		

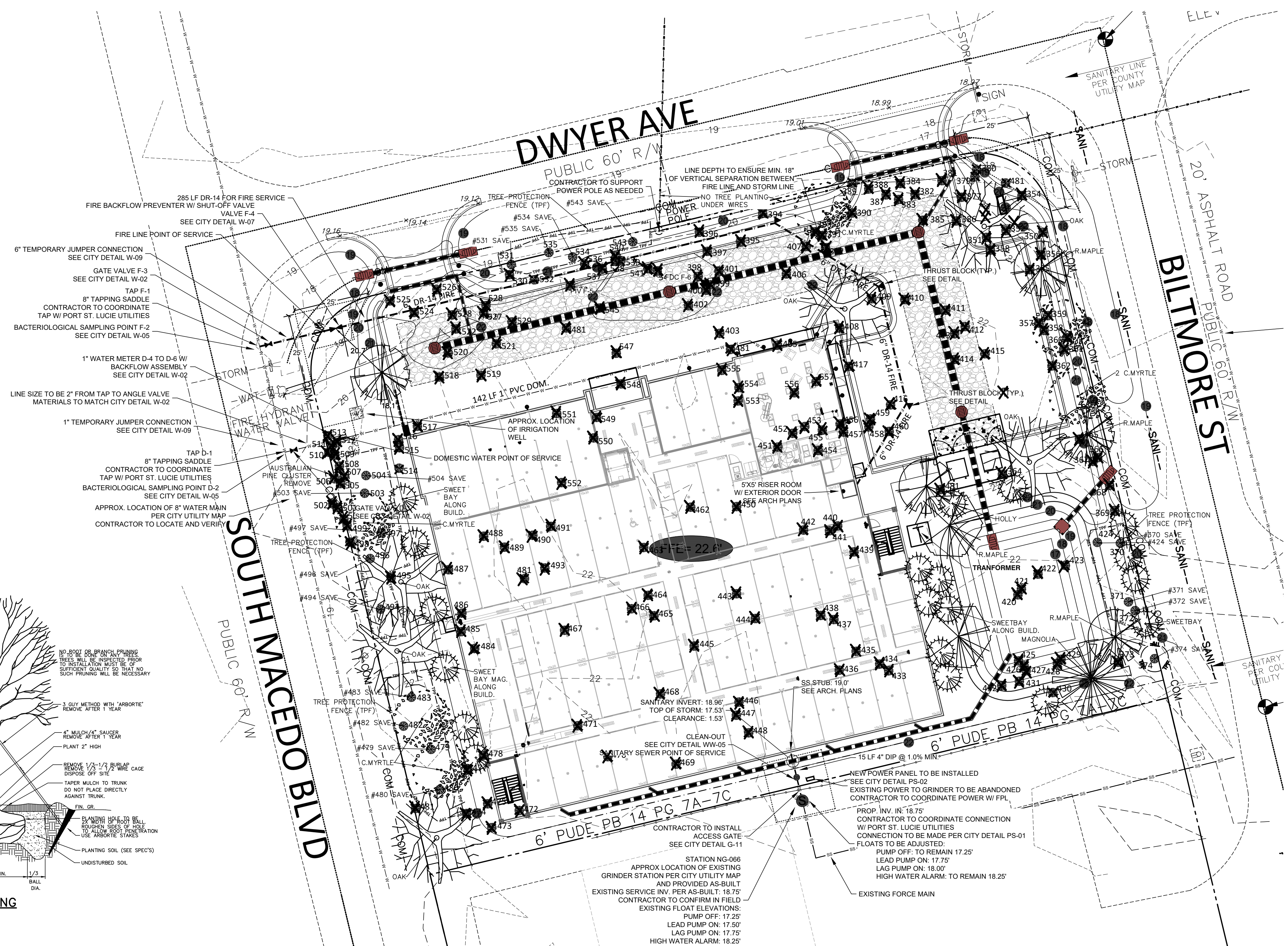
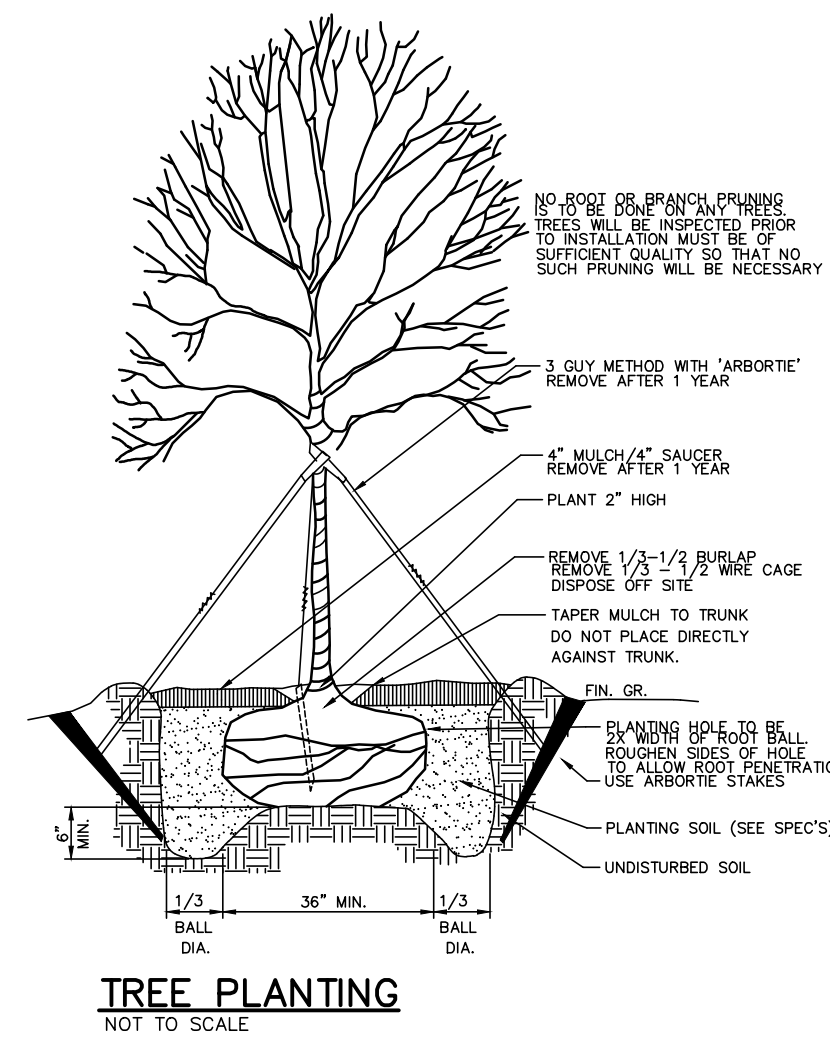
None

1. PANELS ARE AVAILABLE IN .065 & .085 THICKNESS.

Toll Free (800) 654-4067 • (951) 253-4220 • Fax (866) 808-4552 • (714) 630-4182 • www.caddetails.com • www.villarootbarrier.com

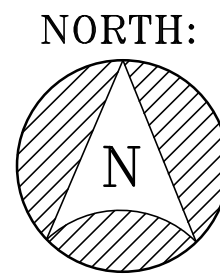
**ROOT BARRIER**

THE CONTRACTOR SHALL INSTALL A VILLA ROOT BARRIER OR APPROVED EQUAL FOR ANY TREE WITHIN 5' OF ANY SIDEWALK OR HARDSCAPE ELEMENT. THE ROOT BARRIER SHALL BE A MINIMUM OF 24" DEEP AND EXTEND A MINIMUM OF 20' IN EITHER DIRECTION FROM THE CENTER LINE OF THE TREE SET BETWEEN THE HARDSCAPE ELEMENT AND THE TRUNK OF THE TREE. THE CITY MAY REQUIRE A 36" DEEP ROOT BARRIER FOR LARGER SHADE TREES; THE CONTRACTOR SHALL COORDINATE DEPTH OF ROOT BARRIER WITH THE ON SITE INSPECTOR.

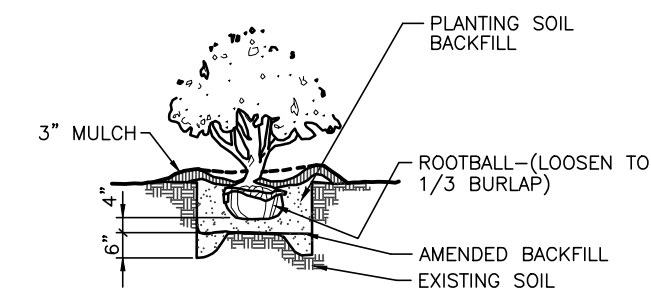
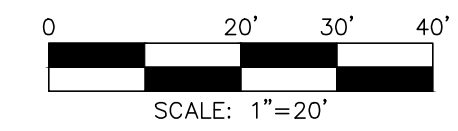




DATE	#
04-25-23	
10-27-23	



SCALE:



SHRUB PLANTING NOT TO SCALE



SHRUBS

110	WALTER'S VIBURNUM	viburnum obovatum	3 GAL. 24" HT.
042	SIMPSON'S STOPPER	Myricianthes fragrans	3 GAL. 24" HT.
026	PLUMBAGO	Plumbago auriculata	3 GAL. 24" HT.
131	SAW PALMETTO	Serenoa repens	3 GAL. 24" HT.
036	WHEELERS DWF. PITT.	PITT. tobira wheeleri	3 GAL. 24" HT.
044	SAND CORD GRASS	Spartina bakeri	3 GAL. 24" HT.
025	Trailing Lantana	Lantana montevidensis	1 Qt. pots
040	BIG BLUE LIRIOPE	Liriope muscari B.BLUE	Pint

AS PER CITY CODE ALL SHRUBS MUST BE A MINIMUM OF 24" HT. AT TIME OF PLANTING; UP-SIZE CONTAINER IF REQUIRED.

PSLUSD NOTES

1. NO LANDSCAPING SHALL BE PLANTED IN A MANNER THAT WOULD ADVERSELY AFFECT UTILITY EASEMENTS. LANDSCAPING SHALL BE IN COMPLIANCE WITH CHAPTER 154 OF THE CITY OF PORT ST. LUCIE CODE OF ORDINANCE, PSLUSD TECHNICAL SPECIFICATIONS AND POLICIES.
2. ALL LANDSCAPING WITHIN CITY UTILITY EASEMENTS SHALL COMPLY WITH PSLUSD TECHNICAL SPECIFICATIONS, POLICIES, AND CODES.
3. ALL LANDSCAPING SHALL MEET THE LATEST PSLUSD LANDSCAPE POLICY AND SHALL NOT BE PLACED IN A MANNER THAT WOULD CREATE CONFLICTS WITH THE INTENDED OPERATION AND MAINTENANCE OF ANY EXISTING UTILITY.
4. TREES SHALL NOT BE PLANTED WITHIN TEN (10) FEET OF ANY PSLUSD UNDERGROUND INFRASTRUCTURE.
5. NO LANDSCAPING OTHER THAN SOD GRASSES MAY BE PLANTED WITHIN A 5' RADIUS OF MAINTENANCE AREA OF ANY PSLUSD APPURTENANCE SUCH AS WATER METERS, BACK-FLOW DEVICES, FIRE HYDRANTS, SANITARY SEWER CLEANOUTS, AND MANHOLES, ETC. .

GENERAL CONTRACT NOTES

WETLANDS, FLOOD PLANES, STREAMS, DRAINAGE AREAS, ASSOCIATED BUFFERS: THIS PROJECT IS ADJACENT TO A DRAINAGE EASEMENT. THE CONTRACTOR SHALL IN NO MANNER DISTURB THIS AREA NOR DIRECT ANY SILTED DRAINAGE TO THIS AREA. REFER TO THE CIVIL DRAWINGS FOR ALL SILT FENCING AND PROTECTION OF THIS AREA.

LIMITS TO WORK: THE CONTRACTOR SHALL VISIT THE SITE TO DETERMINE WHETHER THE CONSTRUCTION WAS PERFORMED WITHIN THE LANDSCAPE AREA DEPICTED ON THIS DRAWING. THE LANDSCAPE CONTRACTOR SHALL BE RESPONSIBLE TO TURN OVER IN A 'FINISHED CONDITION' ALL THE DISTURBED AREA EVEN IF IT IS LARGER THAN THE LANDSCAPED AREA SHOWN ON THE DRAWINGS. AT A MINIMUM THE DISTURBED AREA ASSOCIATED WITH THIS CONSTRUCTION SHALL BE SODDED AND LEFT IN A 'FINISHED CONDITION'.

PERMITS: THE LANDSCAPE CONTRACTOR SHALL WORK FROM A STAMPED SET OF PERMIT PLANS. DO NOT WORK FROM ANY PLANS THAT DO NOT HAVE THE PERMIT STAMP BY THE MUNICIPALITY. THE CONTRACTOR SHALL BE RESPONSIBLE FOR ANY RE-WORK ASSOCIATED WITH WORKING ON NON-STAMPED/ APPROVED PLANS. VERIFY WITH THE REVIEWING MUNICIPALITY WHETHER AN ADDITIONAL PERMIT IS REQUIRED FOR ANY IRRIGATION WORK WHICH IS NOT INCLUDED ON THESE PLANS.

MOST CURRENT PLANS: THESE PLANS MAY NOT BE THE MOST CURRENT DRAWINGS AVAILABLE. IT IS THE CONTRACTOR'S RESPONSIBILITY TO CONTACT THE GENERAL CONTRACTOR TO VERIFY/INSURE THAT THESE PLANS ARE THE MOST CURRENT.

SITE OBSERVATION/DRAWING DISCREPANCIES: THE OWNER MAY OR MAY NOT HAVE CONTRACTED WITH FRAWLEY ASSOCIATES LLC TO OBSERVE CONTRACTOR COMPLIANCE WITH THE CONTRACT DRAWINGS. IT IS THE CONTRACTOR'S RESPONSIBILITY TO ADHERE TO THE DRAWINGS AND SPECIFICATIONS.

SUBSTITUTIONS: NO TREE SPECIES OR SIZE SUBSTITUTIONS WILL BE CONSIDERED UNLESS A SUBSTITUTION HAS BEEN SUBMITTED IN WRITING TO THE MUNICIPALITY AND APPROVED BY THE MUNICIPALITY. FAILURE TO COMPLY IN THIS REGARD MAY RESULT IN THE REPLACEMENT OF ALREADY INSTALLED PLANT MATERIAL AND IN A DELAY IN RECEIVING THE CERTIFICATE OF OCCUPANCY. IT IS THE CONTRACTOR'S RESPONSIBILITY TO COPY THE LANDSCAPE ARCHITECT ON ANY CHANGES APPROVED BY THE MUNICIPALITY.

MUNICIPAL COMPLIANCE: IT IS THE CONTRACTOR'S RESPONSIBILITY TO COORDINATE WITH THE MUNICIPALITY HAVING JURISDICTION THAT THE INSTALLED LANDSCAPE/IRRIGATION IS IN COMPLIANCE WITH PERMITTED DRAWINGS. THE CONTRACTOR SHALL COORDINATE WITH THE MUNICIPAL SITE INSPECTOR/ARBORIST/PLANNER ON ALL ASPECTS OF THE INSTALLATION.

THE LANDSCAPE ARCHITECT SHALL NOT BE RESPONSIBLE FOR CONSTRUCTION, MEANS, METHODS, TECHNIQUES, OR PROCEDURES UTILIZED BY ANY CONTRACTOR, NOR FOR THE SAFETY OF PUBLIC OR ANY CONTRACTORS EMPLOYEES, OR FOR THE FAILURE OF ANY CONTRACTOR TO CARRY OUT THE WORK IN ACCORDANCE WITH THE CONTRACT DOCUMENTS. IT IS SOLELY THE CONTRACTOR'S RESPONSIBILITY TO INSURE THAT THE CONTRACTOR'S WORK SITE IS KEPT IN A SAFE CONDITION FOR WORKERS AND THE PUBLIC DURING THE COURSE OF THE CONSTRUCTION AND LEAVE THE SITE IN A SAFE CONDITION AT THE END OF EACH WORK DAY. NO DISCREPANCY IN CONSTRUCTION DRAWINGS OR SPECIFICATIONS SHALL CAUSE DEFECTIVE OR INAPPROPRIATE MATERIALS TO BE USED OR POOR WORKMANSHIP TO BE ALLOWED/ACCEPTED. (FA) SHALL NOT BE LIABLE FOR SAFETY ISSUES RELATIVE TO TREE PLANTINGS REQUIRED BY ANY MUNICIPALITY TO BE WITHIN THE ROW.

CALL BEFORE YOU DIG-811-UTILITY LOCATION: IT IS THE CONTRACTOR'S RESPONSIBILITY TO HAVE ALL UTILITIES LOCATED PRIOR TO ANY DIGGING. PRIOR TO CONSTRUCTION, THE CONTRACTOR IS RESPONSIBLE FOR CONTACTING THE UTILITIES PROTECTION CENTER IN FLORIDA @ 811, 72 HOURS BEFORE DIGGING, (EXCLUDING HOLIDAYS AND WEEKENDS) AS SPECIFIED IN THE 'CALL-BEFORE-YOU-DIG' LAW.

THE CONTRACTOR SHALL NOTIFY THE MUNICIPALITY AND LANDSCAPE ARCHITECT IN WRITING, IF IT BECOMES APPARENT DURING THE INSTALLATION THAT OVERHEAD WIRES WILL INTERFERE WITH THE GROWTH OF TREES OVER TIME. FAILURE TO NOTIFY PRIOR TO INSTALLATION MAY REQUIRE RELOCATION AT NO ADDITIONAL COST TO THE OWNER.

COORDINATION: THE CONTRACTOR SHALL COORDINATE AND SEQUENCE HIS WORK WITH THAT OF OTHER SITE CONTRACTORS.

SIGHT DISTANCES: PROPER SIGHT DISTANCES SHALL BE MAINTAINED FOR ALL INSTALLED PLANT MATERIAL. THE CONTRACTOR SHALL NOTIFY THE LANDSCAPE ARCHITECT IF ANY INSTALLED PLANT MATERIAL INTERFERES WITH ANY PARKING SPACE OR DRIVE SITE DISTANCE VISIBILITY.

CLEANING: THE CONTRACTOR SHALL BE RESPONSIBLE TO CLEAN AND REMOVE/DISPOSE, IN A LEGAL MANNER, FROM THE SITE ALL DEBRIS THAT IS A PART OF THE CONTRACTOR'S OPERATION.

OTHER MATERIALS: THE CONTRACTOR SHALL SUPPLY, AS A PART OF THIS CONTRACT, ALL MATERIALS NECESSARY FOR THE COMPLETE INSTALLATION OF THE LANDSCAPE AS SHOWN ON THE DRAWINGS. THE OWNER SHALL SUPPLY THE WATER NECESSARY FOR THE LANDSCAPE INSTALLATION. THE CONTRACTOR SHALL IMMEDIATELY BRING TO THE ATTENTION OF THE OWNER, IN WRITING AND BEFORE INSTALLATION, ANY CONDITIONS WHICH MAY ADVERSELY EFFECT THE PLANTING OR THE PROPER GROWTH OF VEGETATION.

FINE GRADING: THE LANDSCAPE CONTRACTOR SHALL BE RESPONSIBLE TO FINE GRADE THE SITE. THE LANDSCAPE CONTRACTOR SHALL COORDINATE WITH THE GENERAL CONTRACTOR TO ACCEPT THE GRADING CONDITION. EACH LANDSCAPE ISLAND SHALL BE EXCAVATED TO 2"-0" AND ALL UNACCEPTABLE SOIL AND OR CONSTRUCTION DEBRIS REMOVED AND REPLACED WITH PLANTING SOIL.

PLANT QUALITY/CRITERIA: ALL PLANT MATERIAL SHALL BE FLORIDA #1 OR BETTER. ALL TREES SHALL BE OF GOOD QUALITY, FREE OF DISEASE, STRAIGHT TRUNKED, FULL HEADED, SYMMETRICAL AND WELL ROOTED. ALL TREES/SHRUBS MUST BE CONTAINER GROWN OR BALLED AND BURLAPPED WITH SIZES AS INDICATED ON THE PLANT LIST OR ON THE DRAWINGS. ALL PLANTS SHALL BE HEALTHY, VIGOROUS MATERIAL, FREE OF PESTS AND DISEASES. ALL ROOTBALLS, CONTAINERS & HEIGHT TO WIDTH RATIOS SHALL CONFORM TO THE SIZE STANDARDS SET FORTH IN 'AMERICAN STANDARDS FOR NURSERY STOCK' AS PUBLISHED BY THE AMERICAN ASSOCIATION OF NURSERYMEN. THE CONTRACTOR SHALL ARRANGE AND COORDINATE PLANT APPROVAL 'PRIOR TO INSTALLATION'. THE OWNER/OWNER'S REPRESENTATIVE MAY AT ANY POINT BEFORE, DURING OR AFTER THE INSTALLATION BUT PRIOR TO FINAL ACCEPTANCE REJECT PLANT MATERIAL OR INSTALLATION WHICH DOES NOT COMPLY WITH THE SPECIFICATIONS OF THIS DRAWING. ALL PLANT MATERIAL SHALL BE NUMBER ONE OR BETTER.

PLANTING CONDITIONS: IT IS THE LANDSCAPE CONTRACTOR'S RESPONSIBILITY TO COORDINATE WITH THE GENERAL CONTRACTOR AND ACCEPT PLANTING/GRADED/SITE CONDITIONS. PLANT MATERIAL SHALL NOT BE INSTALLED IN AREAS WHICH HAVE NOT BEEN PROTECTED TO FINISHED GRADE OR IN AREAS WHERE BUILDINGS HAVE BEEN BURIED OR NOT PROPERLY REMOVED FROM THE SITE. THE LANDSCAPE CONTRACTOR IS RESPONSIBLE TO 'FINE GRADE' THE SITE. THE CONTRACTOR SHALL BRING TO THE ATTENTION OF THE LANDSCAPE ARCHITECT ANY SITE CONDITIONS WHICH WILL ADVERSELY EFFECT THE GROWTH OF THE PLAN MATERIAL.

MULCH SHALL BE SHREDDED PINE BARK MULCH. ALL PLANTED AREAS SHALL BE MULCHED WITH 3" FRESH MULCH CURRENT CROP 'SETTLED'. TREES IN SOD SHALL BE MULCHED WITH A 6" DIAMETER CIRCLE OF MULCH TO A DEPTH OF 4" SETTLED.

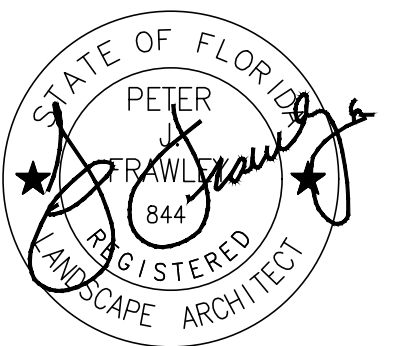
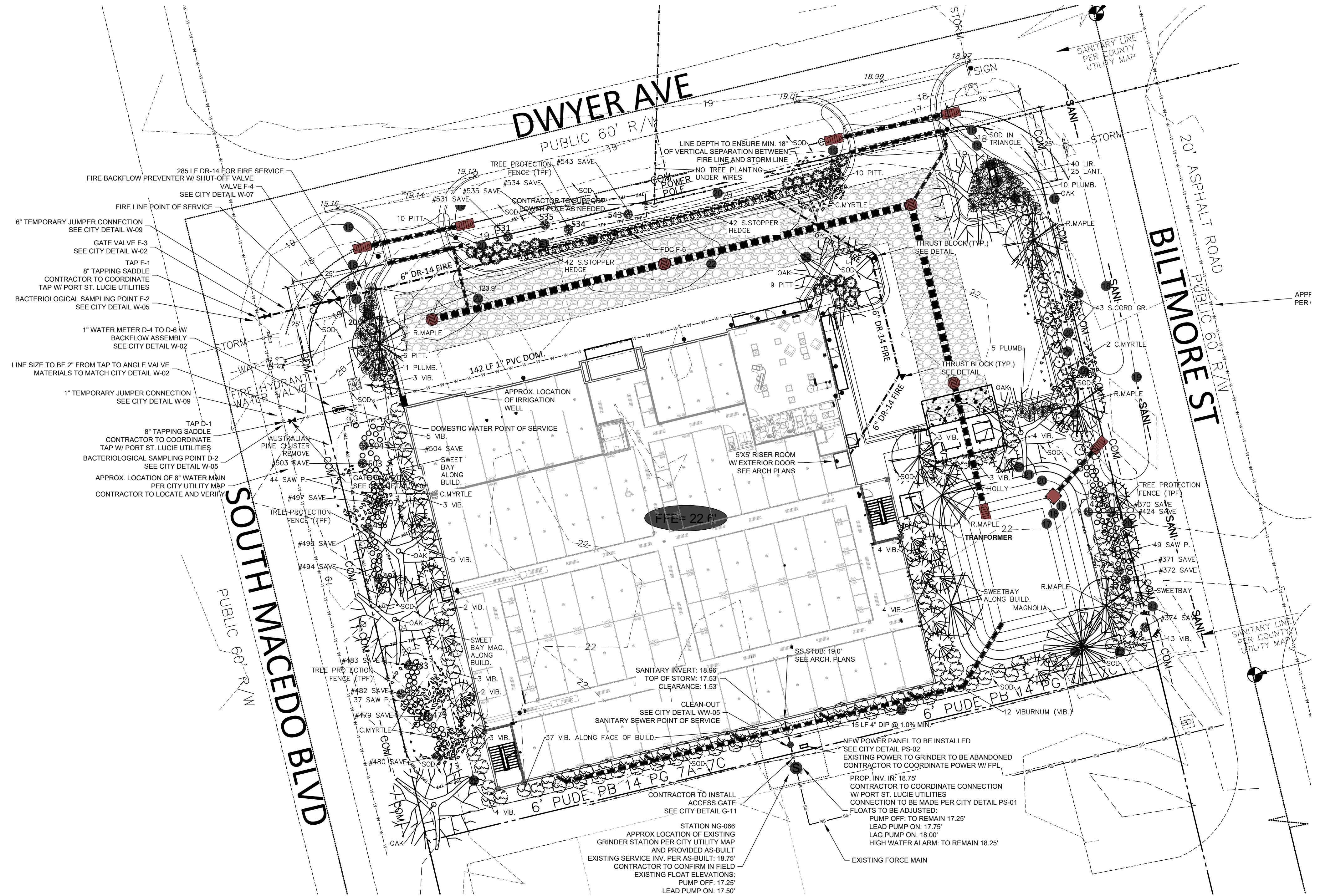
TOPSOIL: 2" OF NEW OR STOCKPILED TOPSOIL SHALL BE ADDED TO ALL AREAS TO BE SEEDED OR PLANTED WITH ANNUALS/GROUND COVER. TOPSOIL SHALL BE ADDED TO TREE AND SHRUB PLANTINGS IN A RATIO OF 1/3 TOPSOIL TO 2/3 SITE SOIL. TOPSOIL SHALL BE NATURAL, FRIABLE, FERTILE, FINE LOAMY SOIL.

MAINTENANCE DURING CONSTRUCTION: IT IS THE CONTRACTOR'S RESPONSIBILITY TO MAINTAIN THE LANDSCAPE INSTALLATION INCLUDING WATERING, MOWING, PRUNING, WEEDING, MAINTAINING BED EDGES, PEST CONTROL AND SLOPE STABILIZATION UNTIL 'FINAL ACCEPTANCE' BY THE OWNER/OWNER'S REPRESENTATIVE.

SODDING: SOD ALL DISTURBED AREAS ON PROPERTY AND ADJACENT TO THE PROPERTY THAT HAVE BEEN DISTURBED DUE TO CONSTRUCTION. THE SPECIES OF SOD SHALL BE ST. AUGUSTINE GRASS OR AS REQUIRED BY THE OVERALL DEVELOPMENT AND AS SUITABLE FOR THE GEOGRAPHIC LOCALITY. SOD SHALL ONLY BE INSTALLED DURING THE APPROPRIATE SEASON. SOD SHALL BE STRONGLY ROOTED, WEED, DISEASE AND PEST FREE AND UNIFORM IN THICKNESS. IT SHALL BE INSTALLED WITHIN 24 HOURS OF DELIVERY. IT SHALL BE INSTALLED IN AREAS FINE GRADED TO DRAIN PROPERLY. ANY SOD WHICH CREATES PONDING SHALL BE REMOVED, THE AREA RE-GRADED AND THE SOD RESET.

PLANT GUARANTEE: ALL PLANT MATERIAL SHALL BE GUARANTEED FOR A PERIOD OF TWO YEARS BEGINNING AT FINAL ACCEPTANCE. THE CONTRACTOR SHALL REPLACE ANY PLANT MATERIAL WHICH DIES OR IS IN A DETERIORATING CONDITION DURING THE GUARANTEE PERIOD AND HAS BEEN PROPERLY MAINTAINED. (WHICH INCLUDES PROPER WATERING). UNHEALTHY TREES WILL BE DEFINED AS A MAIN LEADER DIE BACK OR 25% OF THE CROWN IS DEAD. UNHEALTHY SHRUBS AND GROUND COVER WILL BE DEFINED AS A MINIMUM OF NOT COMPLYING WITH SPECIFICATIONS IN THE 'AMERICAN STANDARD FOR NURSERY STOCK'.

IRRIGATION: SEE IRRIGATION PLAN UNDER SEPARATE COVER.



**PETER FRAWLEY**  
 LANDSCAPE ARCHITECT  
 675 SEMINOLE AVE (SUITE 101)  
 ATLANTA, GA 30307 (404) 874-5091

**DWYER AVE STORAGE**  
 792 SW DWYER AVE & 1210 SW BILTMOR ST.  
 PORT ST. LUCIE  
 PORT ST. LUCIE Proj. # P22-310/Utilities 11-491-00

(SHRUB) LANDSCAPE PLAN

SCALE: AS SHOWN

DATE: 02/09/2023

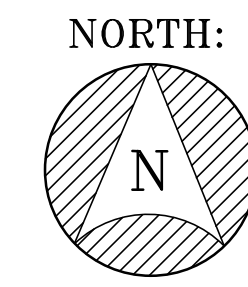
PROJECT: 23003

SHEET  
L-2

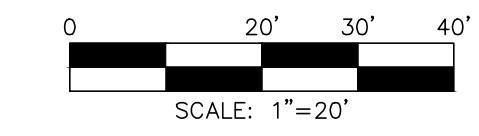


**TREE CHART**

350	OAK 6	465	SLASH PINE 4
351	SLASH PINE	466	OAK 6
352	OAK 5	467	OAK 8
353	SLASH PINE 5	468	OAK 6
354	OAK 7	469	SLASH PINE 12
355	OAK 12	470	SLASH PINE 20
356	OAK 6	471	FICUS 12, 12
357	OAK 6	472	SLASH PINE 12
358	OAK 9	473	CABBAGE PALM 18
359	OAK 5	474	SLASH PINE 12
360	OAK 8	475	OAK 6
361	OAK 10	477	SLASH PINE 8
362	OAK 10	478	SLASH PINE 8
363	OAK 6	479	OAK 6
364	SLASH PINE 13	480	SLASH PINE 15
365	OAK 12	481	AUSTRALIAN PINE 15
366	OAK 10	482	SLASH PINE 14
367	OAK 7	483	SLASH PINE 16
368	OAK 7	484	OAK 6
369	OAK 6		
370	OAK 9	465	SLASH PINE 4
371	OAK 9	466	OAK 6
372	OAK 8	467	OAK 8
373	SLASH PINE 18	468	OAK 6
374	OAK 6	469	SLASH PINE 12
377	OAK 5	470	SLASH PINE 20
378	OAK 4	471	FICUS 12, 12
379	OAK 5	472	SLASH PINE 12
380	OAK 5	473	CABBAGE PALM 18
381	OAK 4	474	SLASH PINE 12
382	SLASH PINE 10	475	OAK 6
383	OAK 8	477	SLASH PINE 8
384	OAK 5	478	SLASH PINE 8
385	SLASH PINE 6	479	OAK 6
386	SLASH PINE 8	480	SLASH PINE 15
387	SLASH PINE 9	481	AUSTRALIAN PINE 15
388	OAK 6	482	SLASH PINE 14
389	OAK 6	483	SLASH PINE 16
390	SLASH PINE 12	484	OAK 6
391	SLASH PINE 15	485	OAK 13
392	CABBAGE PALM 12	486	OAK 13
393	OAK 6	487	SLASH PINE 13
394	OAK 4	488	CABBAGE PALM 13
395	OAK 5	489	OAK 5
396	OAK 6	490	OAK 9
397	SLASH PINE 15	491	OAK 6
398	CABBAGE PALM 13	492	OAK 6
399	CABBAGE PALM 14	493	OAK 4
400	CABBAGE PALM 12	494	SLASH PINE 12
401	OAK 5	495	AUSTRALIAN PINE 8
402	SLASH PINE 10	496	OAK 10
403	ROAK 8	497	SLASH PINE 10
404	SLASH PINE 16	498	AUSTRALIAN PINE 8
405	OAK 12	499	AUSTRALIAN PINE 10
406	SLASH PINE 15	500	AUSTRALIAN PINE 10
407	OAK 5	501	AUSTRALIAN PINE 12
408	OAK 9	502	AUSTRALIAN PINE 10
409	OAK 12	503	SLASH PINE 6
410	OAK 4	504	SLASH PINE 15
411	OAK 6	505	AUSTRALIAN PINE 5
412	OAK 10	506	AUSTRALIAN PINE 4
413	OAK 5	507	AUSTRALIAN PINE 7
414	OAK 5	508	AUSTRALIAN PINE 8
415	OAK 6	509	AUSTRALIAN PINE 10
416	OAK 12	510	AUSTRALIAN PINE 8
417	OAK 7	511	AUSTRALIAN PINE 10
418	SLASH PINE 10	512	AUSTRALIAN PINE 13
420	SLASH PINE 10	513	AUSTRALIAN PINE 9
421	SLASH PINE 13	514	OAK 6
422	SLASH PINE 12	515	OAK 5
423	SLASH PINE 16	516	OAK 10
424	OAK 5	517	OAK 10
425	SLASH PINE 10	518	OAK 8
426	SLASH PINE 11	519	OAK 15
427	SLASH PINE 5	520	OAK 4
428	SLASH PINE 10	521	OAK 5
429	SLASH PINE 5	522	OAK 6
430	SLASH PINE 10	523	OAK 4
431	SLASH PINE 10	524	SLASH PINE 20 20
432	SLASH PINE 13	525	OAK 13, 10, 6, 6
433	OAK 11	526	OAK 8
434	OAK 5	527	OAK 10
435	SLASH PINE 13	528	OAK 5
436	SLASH PINE 13	529	OAK 5
437	SLASH PINE 15	530	SLASH PINE 10
438	SLASH PINE 8	531	OAK 5
439	OAK 20	532	SLASH PINE 15
440	OAK 8	533	CABBAGE PALM 15
441	OAK 10	534	OAK 6
442	OAK 5	535	OAK 6
443	CABBAGE PALM 18	536	OAK 5
444	OAK 4	537	SLASH PINE 15
445	SLASH PINE 15	538	CABBAGE PALM 14
446	SLASH PINE 20	539	OAK 10
447	SHEFFLERA 5, 4	540	SLASH PINE 10
448	SLASH PINE 11	541	SLASH PINE 16
450	OAK 6	542	CABBAGE PALM 11
451	OAK 9	543	OAK 6
452	CABBAGE PALM 8	545	OAK 4
453	SLASH PINE 12	546	OAK 4
454	SLASH PINE 13	547	OAK 5
455	CABBAGE PALM 10	548	OAK 6
456	CABBAGE PALM 8	549	OAK 6
457	CABBAGE PALM 8	550	OAK 10
458	CABBAGE PALM 6	551	OAK 6
459	CABBAGE PALM 6	552	OAK 6
460	CABBAGE PALM 6	553	OAK 4 5
462	OAK 5, 8	554	OAK 4
463	SLASH PINE 12	555	OAK 4 3
464	OAK 9	556	OAK 6
		557	OAK 5



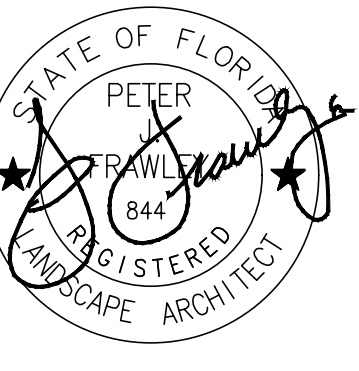
SCALE:



REVISIONS:

DATE #

10/27/23	



**PETER FRAWLEY**  
LANDSCAPE ARCHITECT  
6715 SEMINOLE AVE (SUITE 101)  
ATLANTA, GA 30307 (404) 874-5091

**DWYER AVE STORAGE**  
792 SW DWYER AVE & 1210 SW BILTMOR ST.  
PORT ST. LUCIE  
PORT ST. LUCIE Proj. # P22-310/Utilities 11-491-00

TREES REMOVED

SCALE: AS SHOWN

DATE: 02/09/2023

PROJECT: 23003

SHEET

L-3

