

THIS IS NOT A SURVEY

NOTE:

DESCRIPTION NOT
VALID WITHOUT
SKETCH.

ABBREVIATION LEGEND

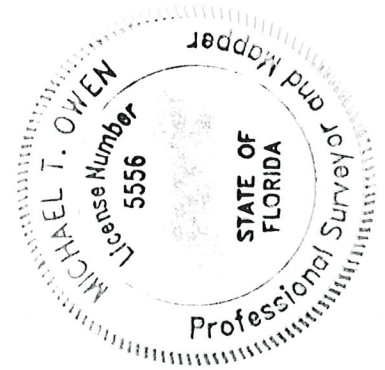
SQ FT SQUARE FEET
 CL CENTER LINE
 L LENGTH
 R RADIUS
 Δ DELTA

NOTES:

1. BEARINGS SHOWN HEREON ARE RELATIVE TO THE CENTER LINE OF SW BILTMORE STREET LABELED HEREON AS (BEARING BASIS), ALL OTHER BEARINGS ARE RELATIVE THERETO.
2. THIS SKETCH AND DESCRIPTION IS FOR THE EXCLUSIVE PURPOSE OF DESCRIBING THE PARCEL OR STRIP OF LAND SHOWN AND IS NOT A BOUNDARY SURVEY.

DESCRIPTION:

LOTS 20, 21 & 22, BLOCK 73, PORT ST. LUCIE SECTION TWENTY SEVEN, ACCORDING TO THE PLAT THEREOF, RECORDED IN PLAT BOOK 14, PAGES 5, 5A THROUGH 5I, OF THE PUBLIC RECORDS OF ST. LUCIE COUNTY, FLORIDA.



Michael T. Owen

4-27-2022

MICHAEL T. OWEN
 PROFESSIONAL SURVEYOR & MAPPER
 FLORIDA REGISTRATION #5556

SIGNATURE DATE

**SKETCH & DESCRIPTION OF:
 BILTMORE STREET PROPERTIES**

PORT SAINT LUCIE OFFICE
 10250 SW VILLAGE PARKWAY
 SUITE 201
 PORT SAINT LUCIE, FL 34987
 ☎ 772-462-2455
 🌐 www.edc-inc.com



**ENGINEERS & SURVEYORS
 ENVIRONMENTAL**
 F.B.P.E. CERTIFICATE OF AUTHORIZATION 9935
 L.B. CERTIFICATE OF AUTHORIZATION 8098

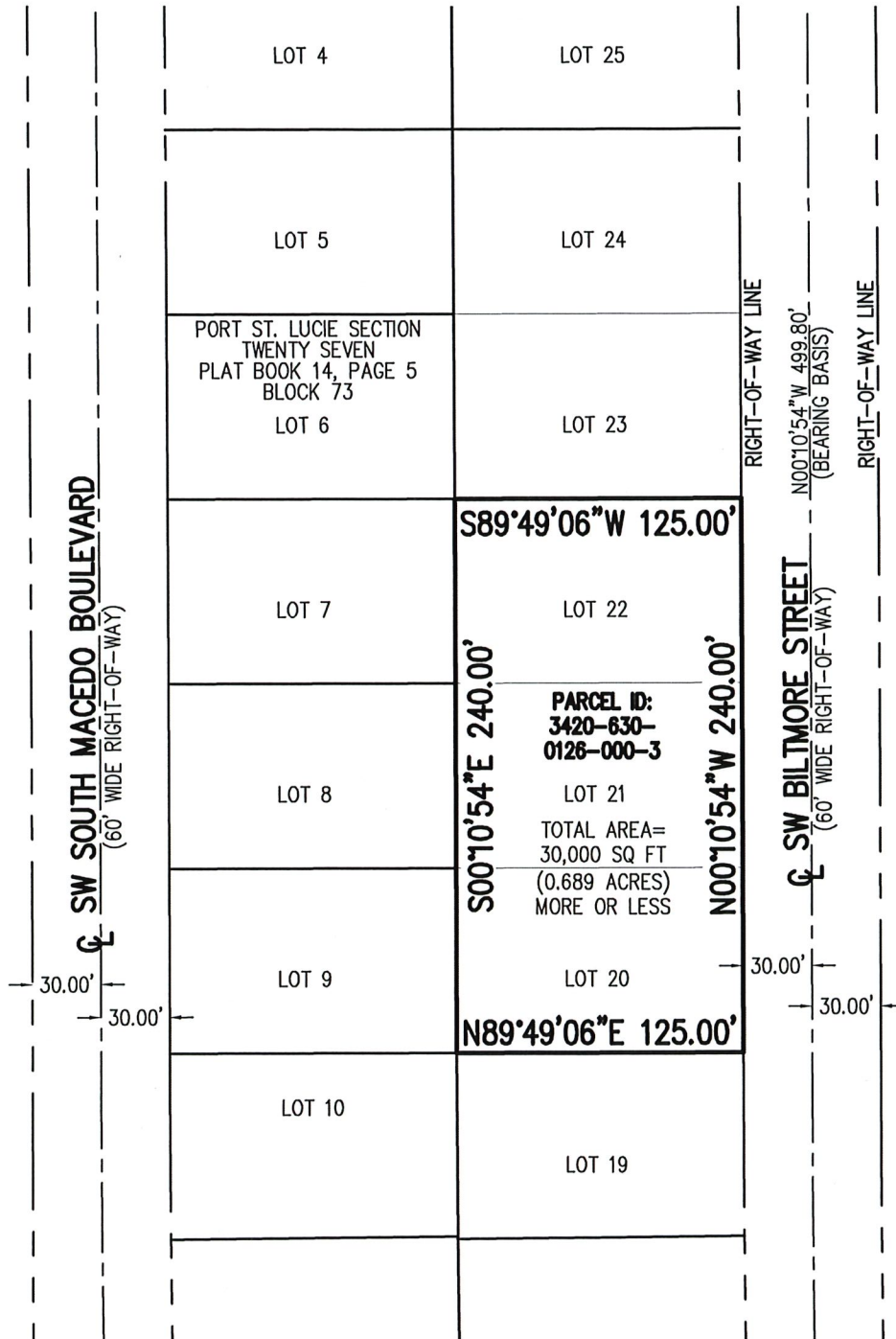
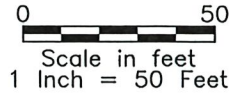
PREPARED FOR:
ANDRADE INNOVATIONS, INC.

REVISIONS

NOTE:

DESCRIPTION NOT
VALID WITHOUT
SKETCH.

THIS IS NOT A SURVEY



**SKETCH & DESCRIPTION OF:
BILTMORE STREET PROPERTIES**

PREPARED FOR:

ANDRADE INNOVATIONS, INC.

PORT SAINT LUCIE OFFICE
10250 SW VILLAGE PARKWAY
SUITE 201
PORT SAINT LUCIE, FL 34987
☎ 772-462-2455
🌐 www.edc-inc.com



**ENGINEERS & SURVEYORS
ENVIRONMENTAL**
F.B.P.E. CERTIFICATE OF AUTHORIZATION 9935
L.B. CERTIFICATE OF AUTHORIZATION 8098

REVISIONS

NOTE:

DESCRIPTION NOT
VALID WITHOUT
SKETCH.

THIS IS NOT A SURVEY

ABBREVIATION LEGEND

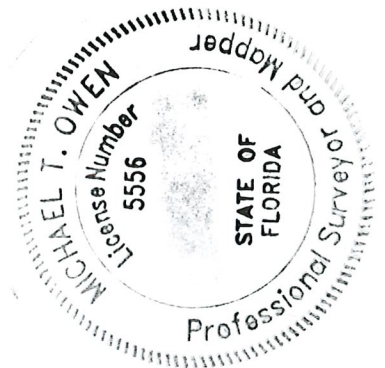
SQ FT SQUARE FEET
C CENTER LINE
L LENGTH
R RADIUS
Δ DELTA

NOTES:

1. BEARINGS SHOWN HEREON ARE RELATIVE TO THE CENTER LINE OF SW BILTMORE STREET LABELED HEREON AS (BEARING BASIS), ALL OTHER BEARINGS ARE RELATIVE THERETO.
2. THIS SKETCH AND DESCRIPTION IS FOR THE EXCLUSIVE PURPOSE OF DESCRIBING THE PARCEL OR STRIP OF LAND SHOWN AND IS NOT A BOUNDARY SURVEY.

DESCRIPTION:

LOTS 19, 20, 21, 22, 23 AND 24, BLOCK 73, PORT ST. LUCIE SECTION TWENTY SEVEN, ACCORDING TO THE PLAT THEREOF, RECORDED IN PLAT BOOK 14, PAGES 5, 5A THROUGH 5I, OF THE PUBLIC RECORDS OF ST. LUCIE COUNTY, FLORIDA.



4-27-2022
SIGNATURE DATE

MICHAEL T. OWEN
PROFESSIONAL SURVEYOR & MAPPER
FLORIDA REGISTRATION #5556

**SKETCH & DESCRIPTION OF:
BILTMORE STREET PROPERTIES**

PREPARED FOR:
ANDRADE INNOVATIONS, INC.

PORT SAINT LUCIE OFFICE
10250 SW VILLAGE PARKWAY
SUITE 201
PORT SAINT LUCIE, FL 34987
☎ 772-462-2455
🌐 www.edc-inc.com

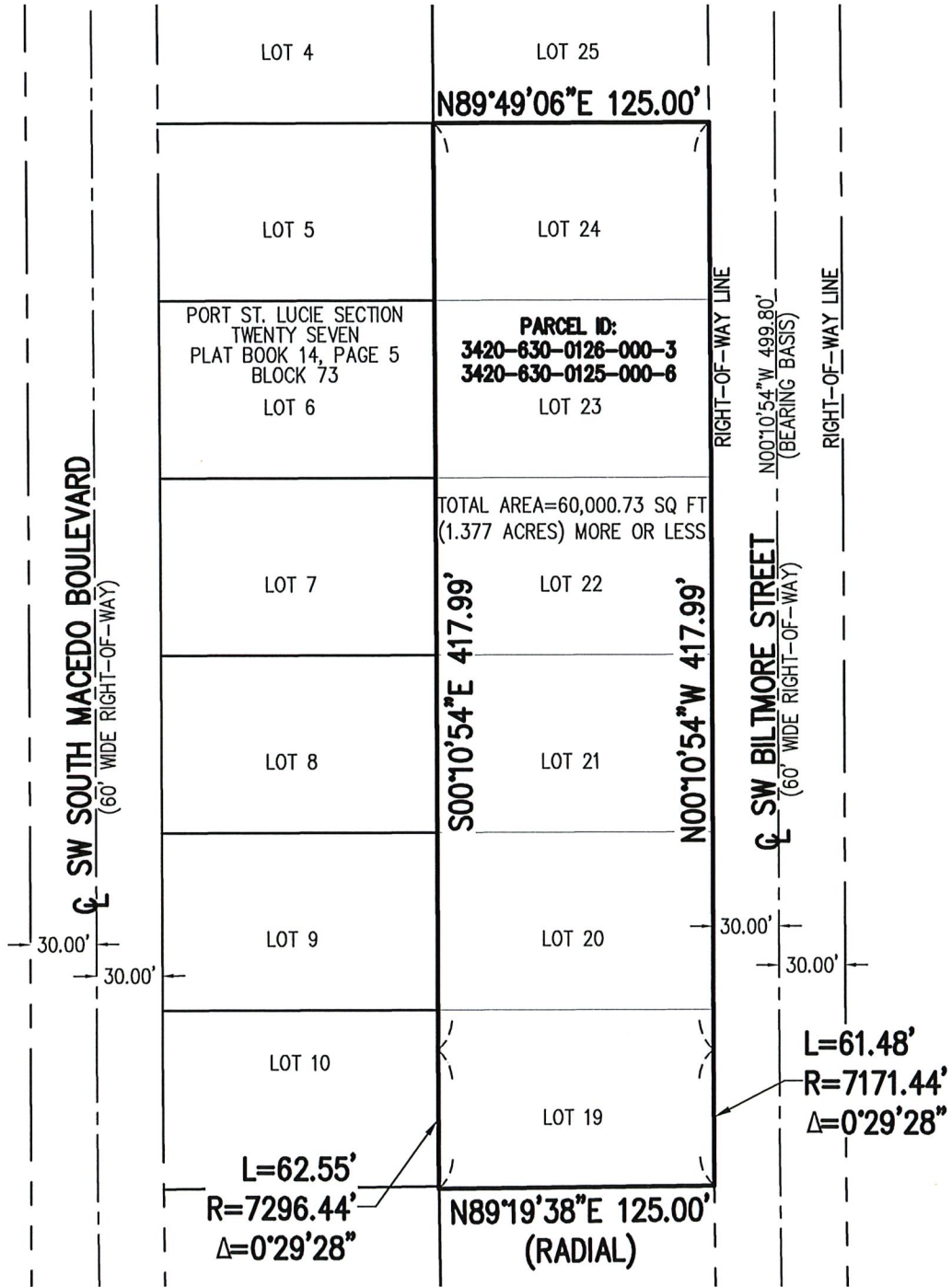
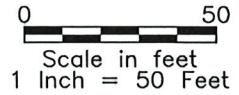


**ENGINEERS & SURVEYORS
ENVIRONMENTAL**
F.B.P.E. CERTIFICATE OF AUTHORIZATION 9935
L.B. CERTIFICATE OF AUTHORIZATION 8098

REVISIONS

NOTE:
DESCRIPTION NOT
VALID WITHOUT
SKETCH.

THIS IS NOT A SURVEY



**SKETCH & DESCRIPTION OF:
BILTMORE STREET PROPERTIES**

PREPARED FOR:

ANDRADE INNOVATIONS, INC.

PORT SAINT LUCIE OFFICE
10250 SW VILLAGE PARKWAY
SUITE 201
PORT SAINT LUCIE, FL 34987
☎ 772-462-2455
🌐 www.edc-inc.com

**ENGINEERS & SURVEYORS
ENVIRONMENTAL**
F.B.P.E. CERTIFICATE OF AUTHORIZATION 9935
L.B. CERTIFICATE OF AUTHORIZATION 8098

REVISIONS