



CITY OF PORT ST. LUCIE  
 CITY CLERK'S OFFICE  
 121 SW PORT ST. LUCIE BLVD.  
 PORT ST. LUCIE, FL 34984-5099  
 772-871-5157

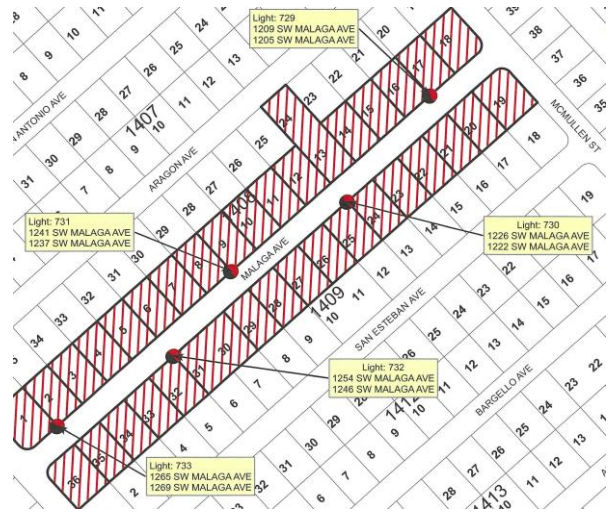
NOTICE OF PUBLIC HEARING  
 NEW RESIDENTIAL STREET LIGHTING ASSESSMENT AREA FOR FISCAL YEAR 2022/2023  
 CITY COUNCIL MEETING

AUGUST 28, 2023, AT 6:30 P.M., CITY HALL  
 121 SW PORT ST. LUCIE BOULEVARD  
 PORT ST. LUCIE, FLORIDA

The lots listed below are in an area balloted and passed by a majority of the property owners returned ballots. The City contemplates levying an assessment estimated at \$26.00 per lot. Payment will be on a yearly basis and collected by the St. Lucie County Tax Collector. This assessment will be included in your November 2024 tax bill on the non-advalem portion of your tax bill. A description of the properties specially benefited (by section, block and lot) and a map showing the proposed location of the street lighting is as follows:

STREET LIGHTING ASSESSMENT AREA  
 BOUNDARY #660  
 SW MALAGA AVENUE – SECTION 17

|            |      |         |    |
|------------|------|---------|----|
| BLOCK 1408 | LOTS | 1 THRU  | 18 |
| BLOCK 1408 | LOT  |         | 24 |
| BLOCK 1409 | LOTS | 19 THRU | 36 |



The public hearing will be held in the City Council Chambers at 6:30 p.m. on August 28, 2023, or as soon thereafter as the matter may be heard, located at the City of Port St. Lucie Municipal Complex (City Hall), 121 S.W. Port St. Lucie Blvd., Port St. Lucie, Florida 34984 for receiving public comment on the proposed collection of the assessments. All affected property owners have a right to appear at the hearing and may file written objections with the Council in care of the City Clerk prior to the meeting. Written objections may also be filed with the City Clerk at the hearing any time before the adjournment of the hearing. If a person decides to appeal any decision made by the Council with respect to any matter considered at the hearing, such person will need a record of the proceedings and may need to arrange for a court reporter to ensure that a verbatim record is made. In accordance with the Americans with Disabilities Act, persons needing special accommodations or an interpreter to participate in this proceeding should contact the City Clerk's office at 772-871-5157, at least seven days prior to the date of the hearing.

Copies of the assessment roll, showing the amount of the assessment to be imposed against each parcel of property, and the legal documentation relating to the assessment is available for inspection in the office of the City Clerk, located on the Third Floor of City Hall, 121 S.W. Port St. Lucie Blvd., Port St. Lucie, Florida.

The assessments will be collected on the non-ad valorem portion of the tax bill to be mailed by the St. Lucie County Tax Collector in November 2024. Failure to pay the assessment will cause a tax certificate to be issued against the property, which may result in a loss of title to your property. Based on a successful vote of the 12 Residential Street Lighting Areas to be approved with the August 28, 2023, Resolution, the estimated revenue generated to pay for the yearly street lighting of those 12 areas is approximately \$10,504. If you have any questions, please contact the City of Port St. Lucie City Attorney's Office at 772-871-5294, Monday through Friday between 8:00 a.m. and 5:00 p.m.