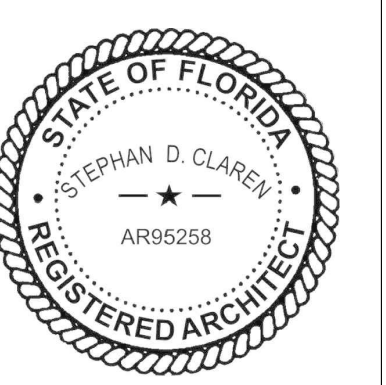


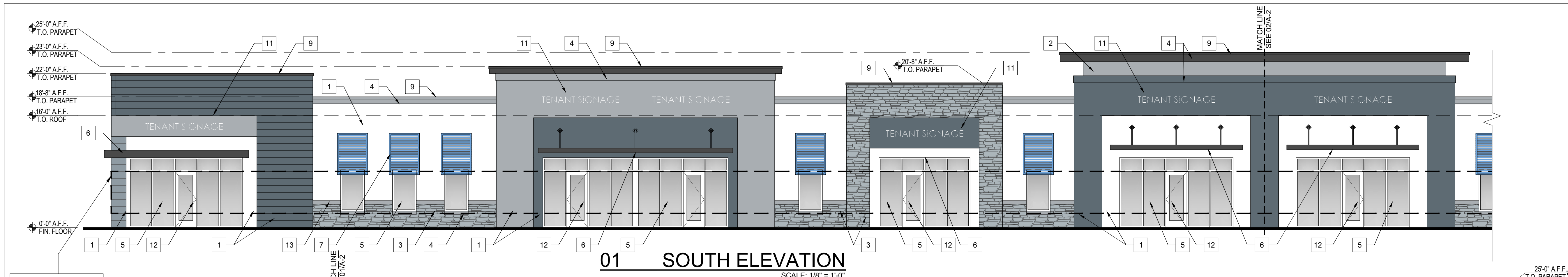
Claren Architecture + Design, Inc.
AA26002865
6400 CONGRESS AVE, SUITE 2150
BOCA RATON, FL 33487
561.961.4884
www.clarenarchitecture.com

Office/ Retail Building for:
BlueKey Equity Partners
Port St. Lucie, FL 34953



PROJECT #	21-058
DATE	11-19-2021
REV #	DATE
1	LMD REZONE & SEU COMMENTS 12-6-2021
SHEET #	A-1

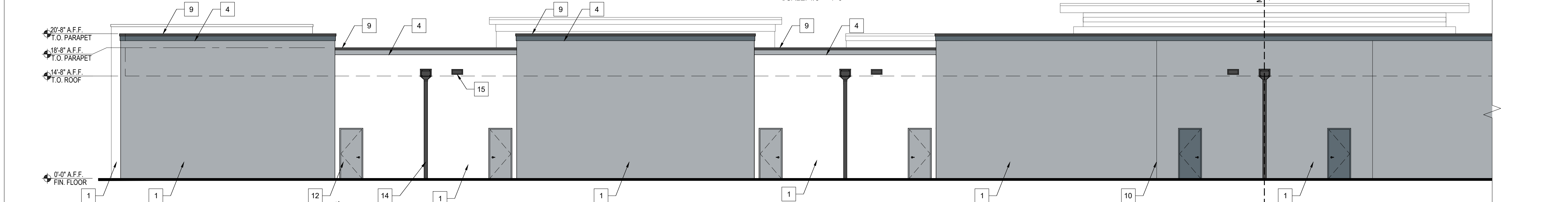
CITY PROJECT # P21-289
PSLUSD PROJECT # 5417



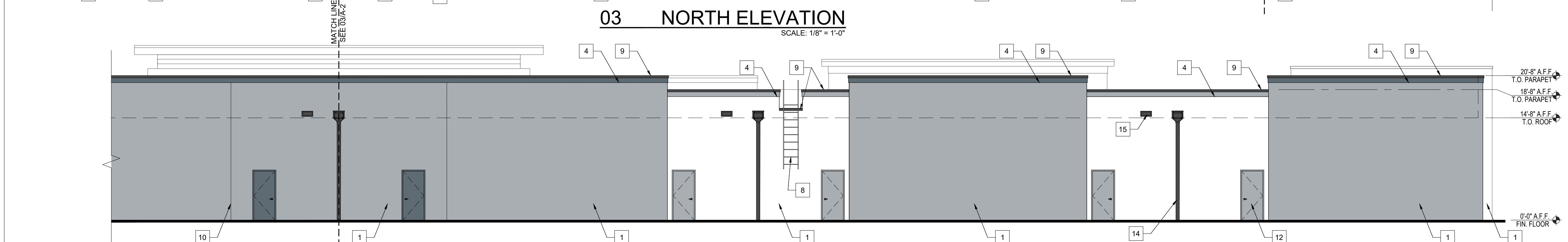
01 SOUTH ELEVATION
SCALE: 1/8" = 1'-0"



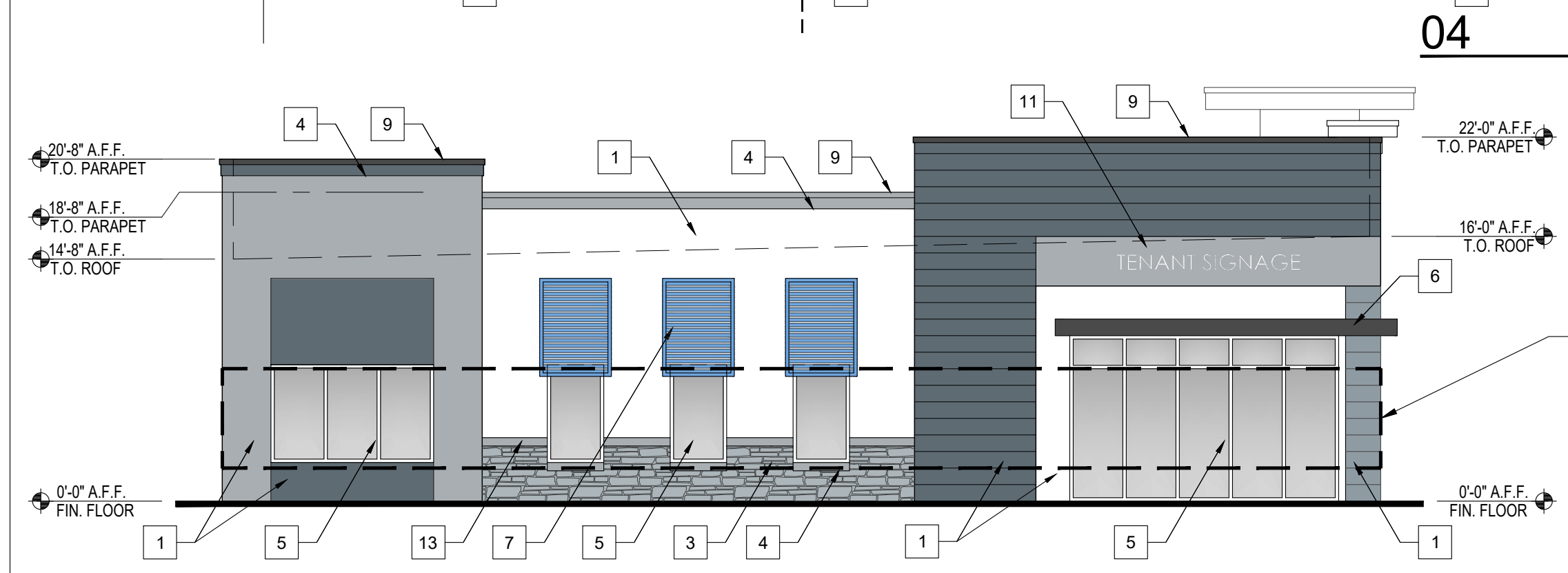
02 SOUTH ELEVATION
SCALE: 1/8" = 1'-0"



03 NORTH ELEVATION
SCALE: 1/8" = 1'-0"

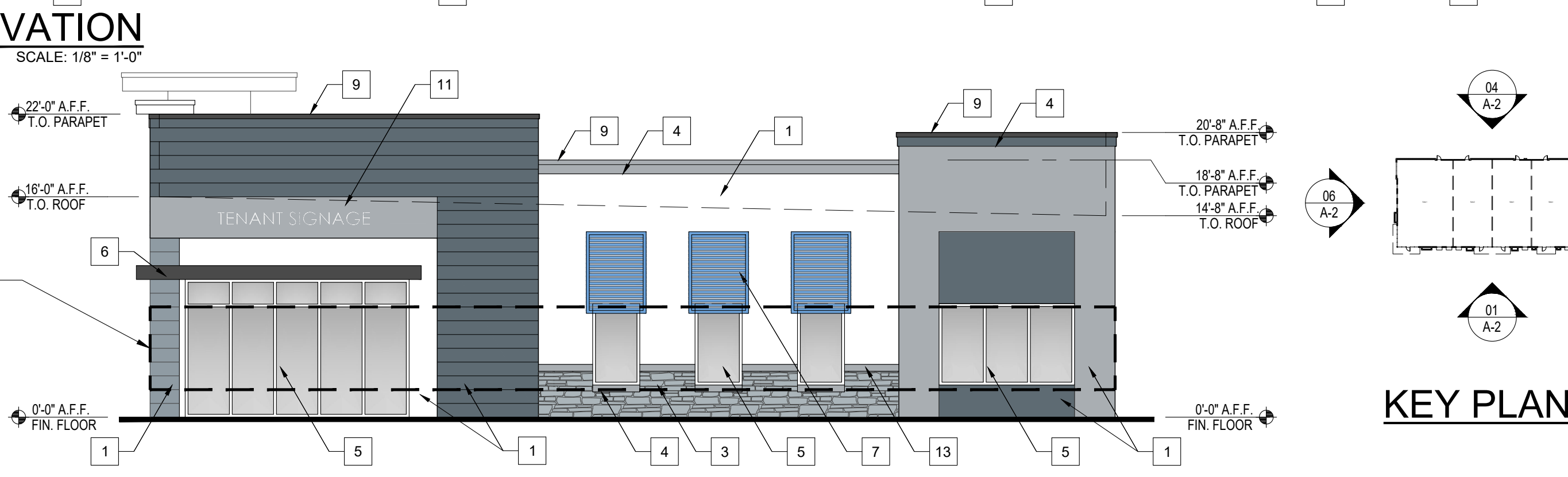


04 NORTH ELEVATION
SCALE: 1/8" = 1'-0"



05 WEST ELEVATION
SCALE: 1/8" = 1'-0"

TRANSPARENCY NOTE:
SIDE FACADE AREA BETWEEN 2' & 8' IN HEIGHT FROM FINISHED FLOOR= 420 SF
SIDE FACADE TOTAL WINDOW & DOOR TRANSPARENCY AREA= 189 SF= 45%



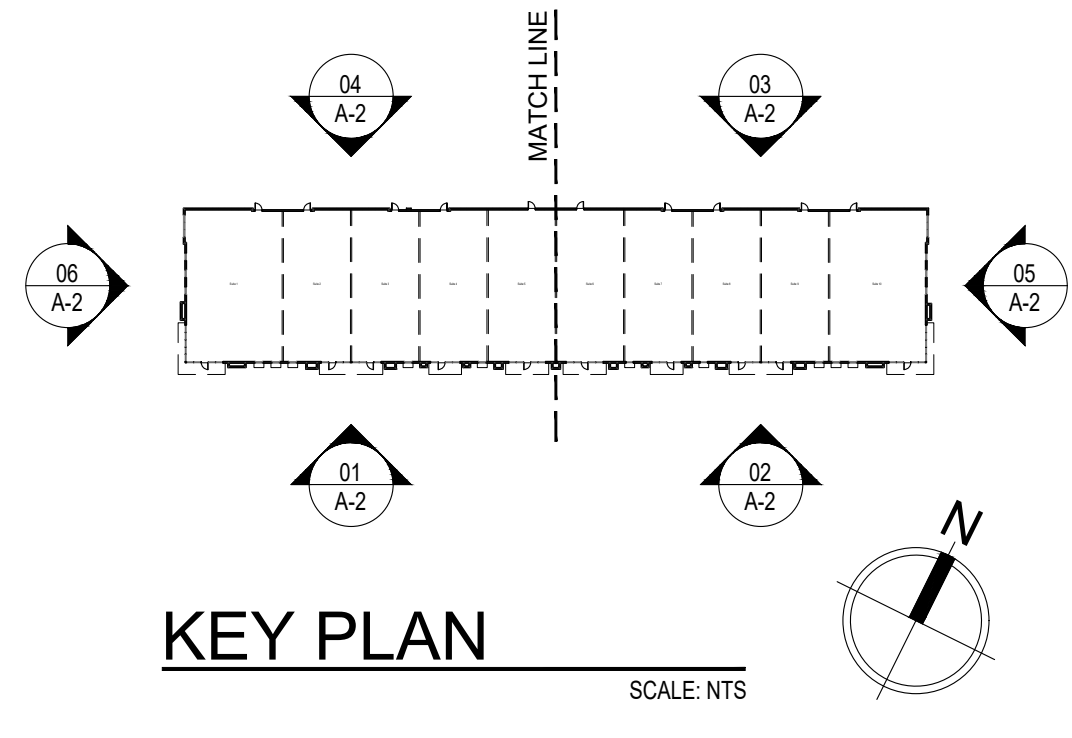
06 EAST ELEVATION
SCALE: 1/8" = 1'-0"

MATERIAL LEGEND	
1	SMOOTH STUCCO FINISH
2	SMOOTH STUCCO FINISH W/ REVEALS
3	STONE FINISH
4	RAISED STUCCO BAND
5	IMPACT RATED ALUM. STOREFRONT SYSTEM
6	ALUMINUM CANOPY
7	ALUMINUM BAHAMAS SHUTTERS
8	ROOF ACCESS LADDER
9	ALUMINUM COPING
10	STUCCO CONTROL "V" JOINT
11	FUTURE SIGNAGE UNDER SEPARATE PERMIT TO COMPLY W/ CITY SIGN PROGRAM
12	IMPACT RATED HOLLOW METAL DOOR
13	EFS BAND
14	ALUMINUM DOWNSPOUT
15	OVERFLOW SCUPPER

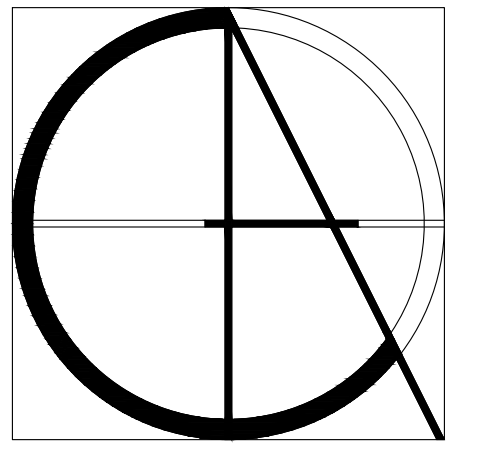
COLOR LEGEND	
[White Box]	SW 7005 - PURE WHITE
[Light Gray Box]	SW 7663 - MONORAIL SILVER
[Dark Gray Box]	SW 2819 - DOWNING SLATE
[Stone Pattern Box]	FACADE STONE - CORONADO, ARTISAN LEDGE. COLOR: HURON

ARCHITECTURAL ELEMENTS PROVIDED	
1.	VERTICAL, RECTANGULAR WINDOWS
2.	STUCCO WITH HORIZONTAL GROOVE LINE PATTERN
3.	STACKED STONE
4.	BAHAMA SHUTTERS
5.	SQUARE COLUMNS SPACED NO GREATER THAN 1.5 THE HEIGHT OF THE COLUMN
6.	CANOPY AND AWNING
7.	DISPLAY WINDOWS

SIGNAGE NOTE	
SIGNAGE SHALL BE REVIEWED AND APPROVED SEPARATELY FROM SITE PLAN	

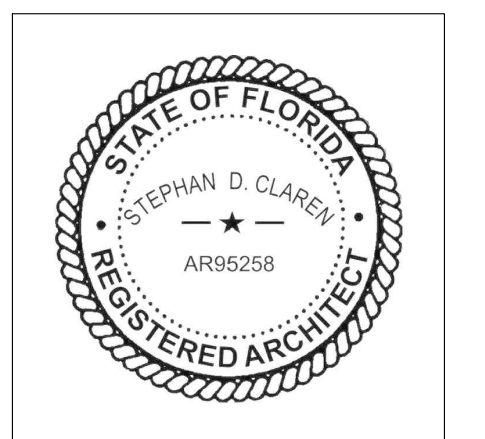


CITY PROJECT # P21-289	PSLUSD PROJECT # 5417
---------------------------	--------------------------



Claren Architecture + Design, Inc.
AA26002865
6400 CONGRESS AVE, SUITE 2150
BOCA RATON, FL 33487
561.961.4884
www.clarenarchitecture.com

Office/ Retail Building for:
BlueKey Equity Partners
Port St. Lucie, FL 34953



PROJECT #	21-058
DATE	11-19-2021
REV #	DATE
1	LMD REZONE & SEU COMMENTS 12-6-2021
2	SPRC 01-12-2022
SHEET #	

A-2