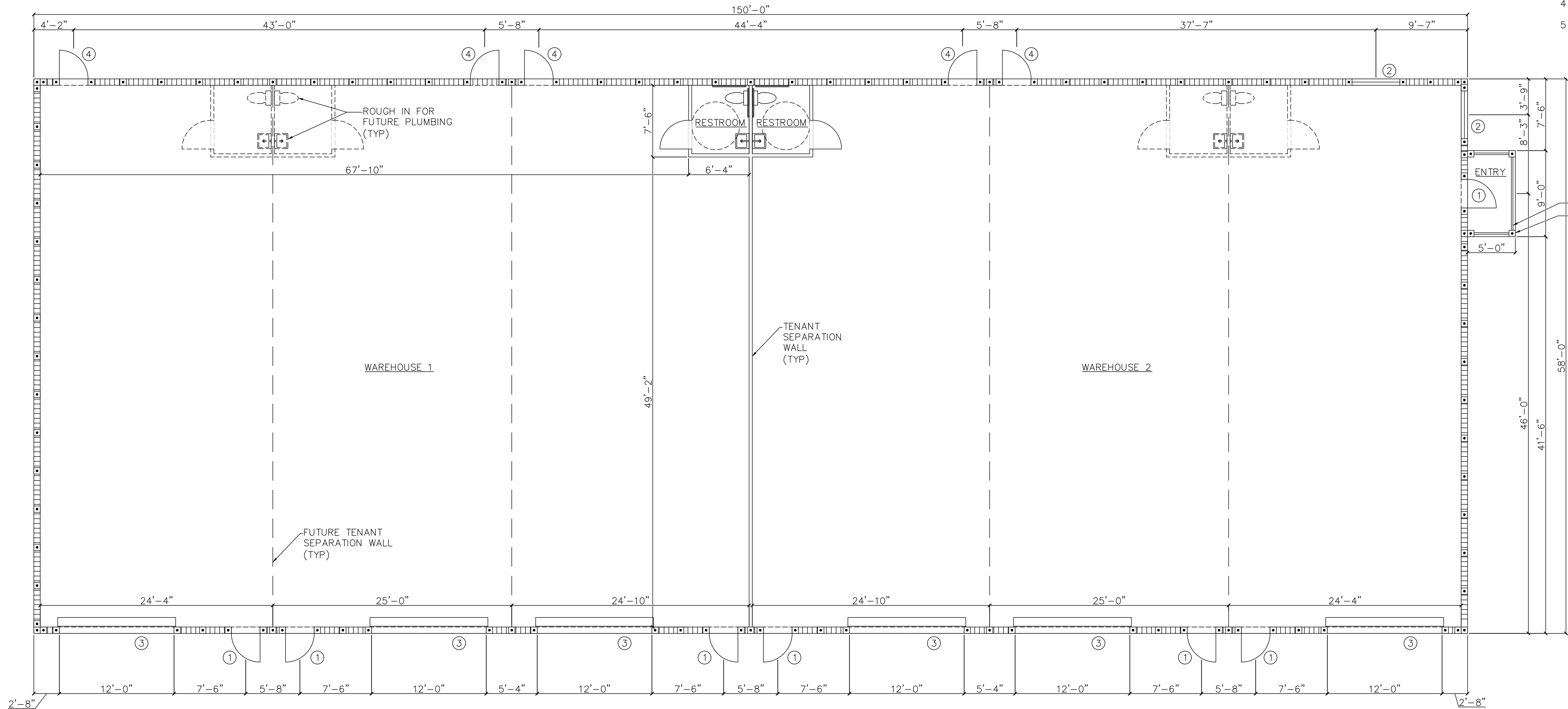


RESTROOM PLAN

1/2" = 1'-0"

DOOR/ WINDOW SCHEDULE

- 1 3/6" STOREFRONT DOOR
- 2 60"x42" STOREFRONT GLASS
- 3 12"14" ROLL UP DOOR
- 4 3/6" SC DOOR
- 5 3/6" SELF CLOSING DOOR



TABULATIONS

ENTRY	45 SQFT
RESTROOMS	98 SQFT
WAREHOUSE 1	4,301 SQFT
WAREHOUSE 2	4,301 SQFT
TOTAL	8,745 SQFT

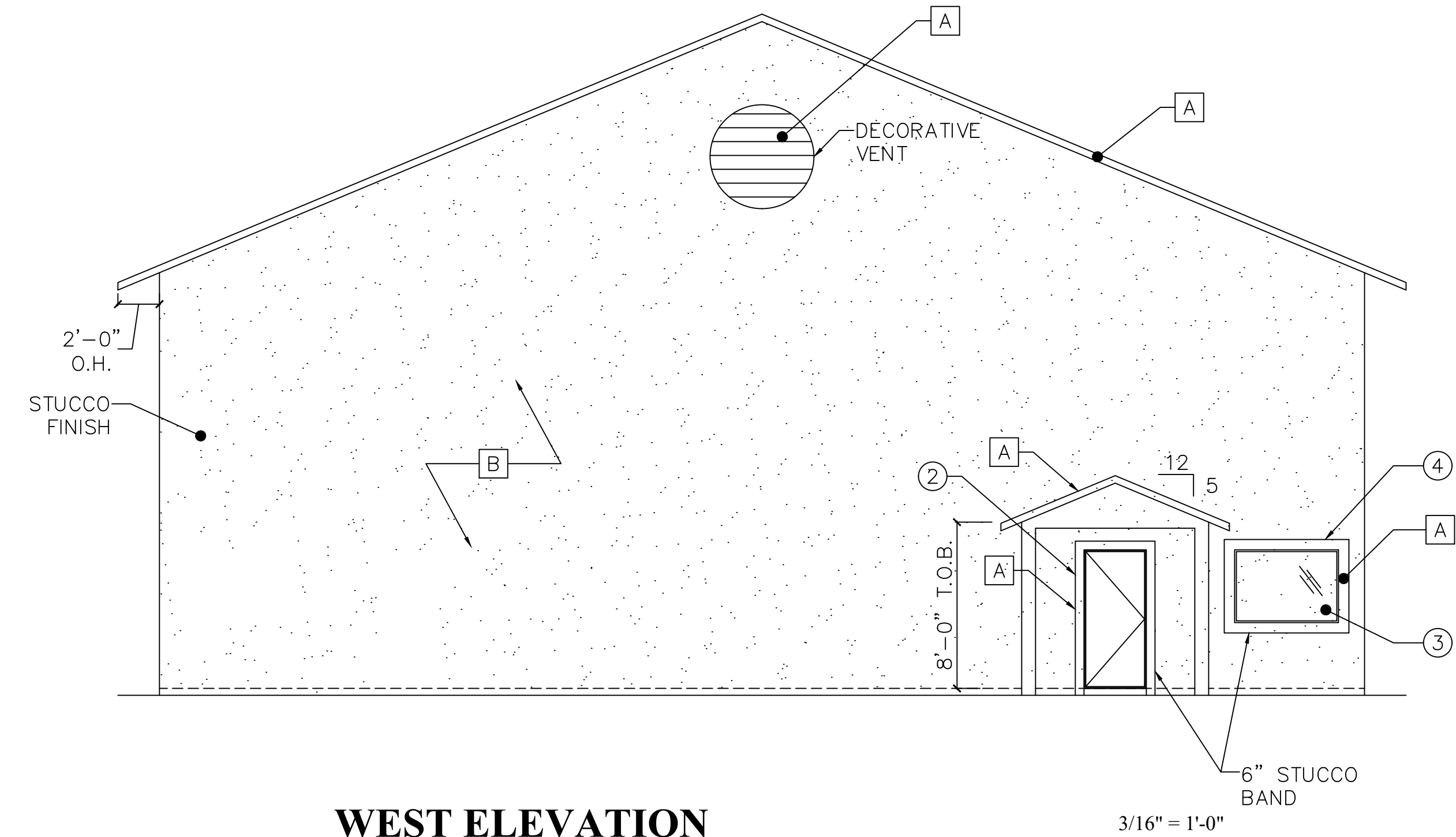
FLOOR PLAN

3/16" = 1'-0"

FRESNILLO BUILDING #2
 COMMERCIAL LAKES DR. PORT ST LUCIE, FL

SHEET NUMBER
 1 OF 6

PAUL WELCH INC.
 MECHANICAL ELECTRICAL CIVIL ENGINEERING
 1984 S.W. BILTMORE ST. SUITE #114
 PORT ST. LUCIE, FL 34984
 PHONE (772) 785-9888 E-MAIL PWELCHINC@AOL.COM
 PAUL WELCH, P.E. FLA REG NO. 29945



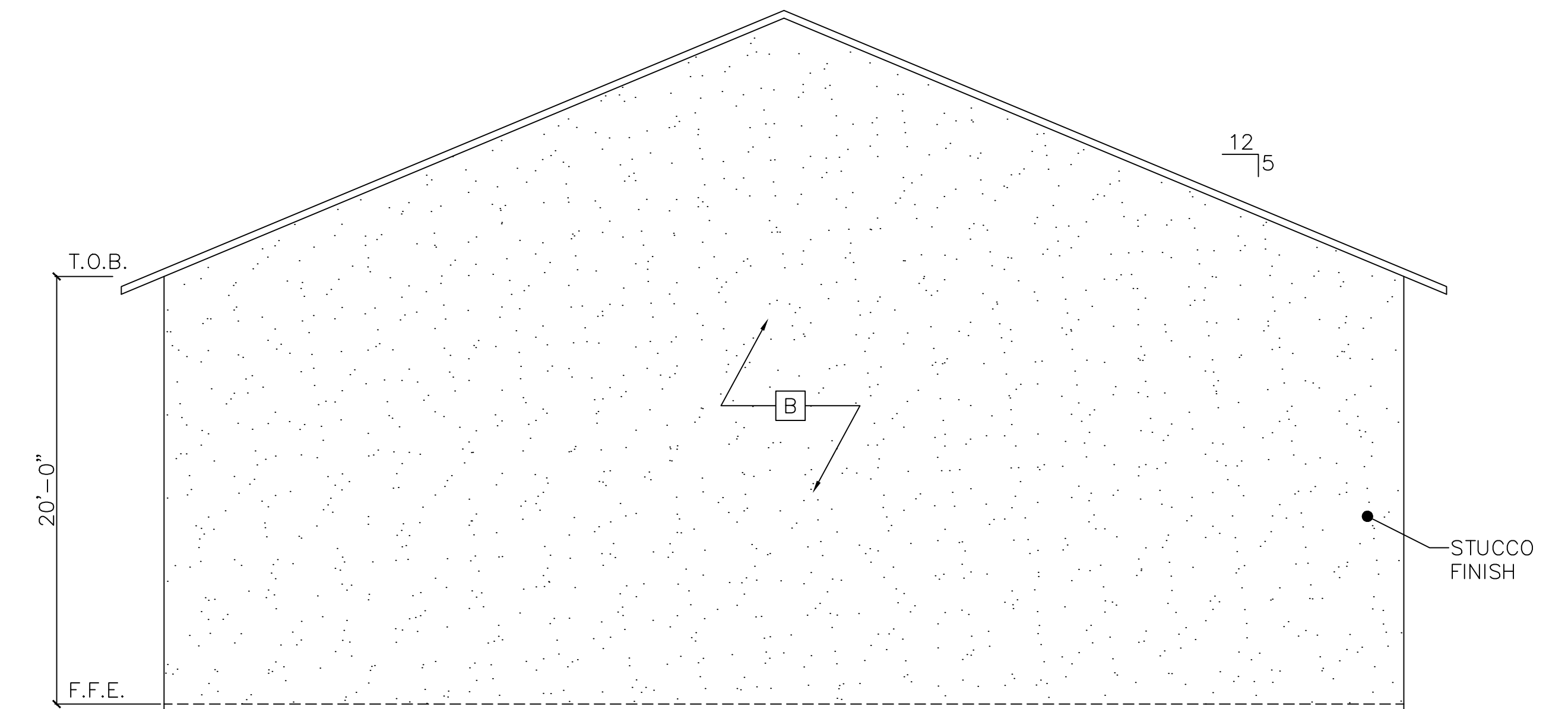
WEST ELEVATION

PAIN T SCHEDULE

- A SW 9080 HUSHED AUBURN
- B SW 6140 MODERATE WHITE
- C METALLIC

ARCHITECTURAL ELEMENTS

- 1 SS MTL ROOF
- 2 PORCH
- 3 RECTANGULAR WINDOW
- 4 STUCCO BANDS (2 SIDES)

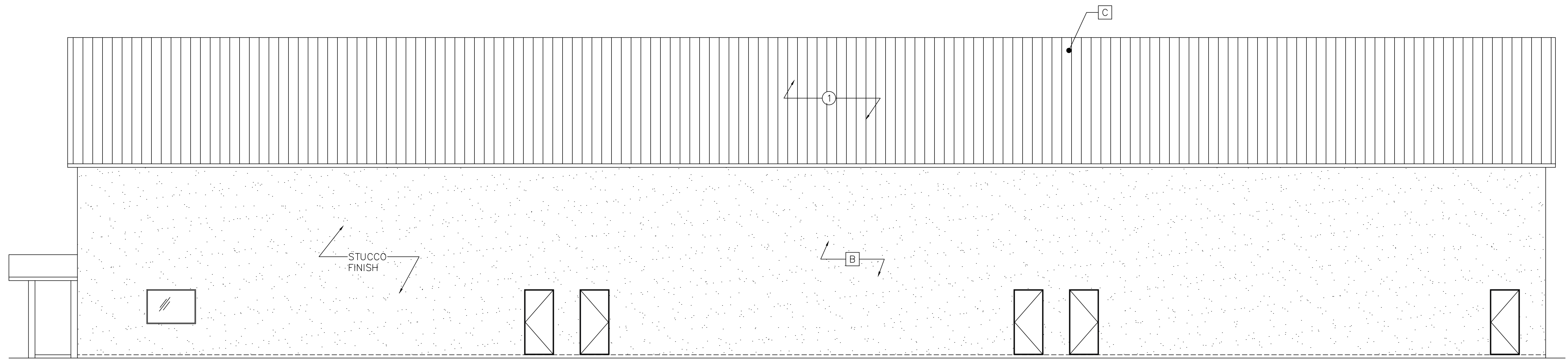


EAST ELEVATION

FRESNILLO BUILDING #2
 COMMERC E LAKES DR. PORT ST LUCIE, FL

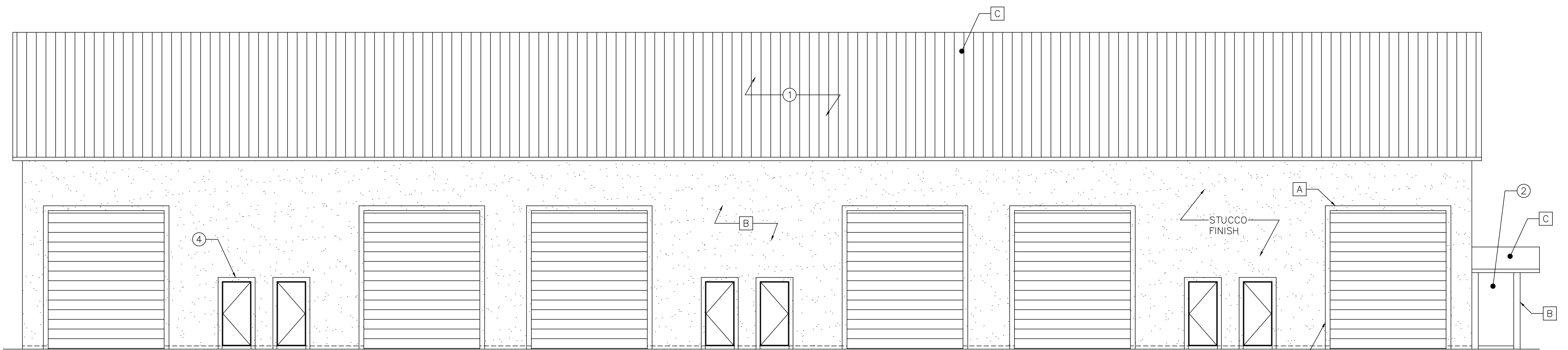
PAUL WELCH INC.
 MECHANICAL ELECTRICAL CIVIL ENGINEERING
 1984 S.W. BILTMORE ST. SUITE #114
 PORT ST. LUCIE, FL 34984
 PHONE (772) 785-9888 E-MAIL PWELCHINC@AOL.COM
 PAUL WELCH, P.E. FLA REG NO. 29945

SHEET NUMBER
 2 OF 6



SOUTH ELEVATION

3/16" = 1'-0"



NORTH ELEVATION

3/16" = 1'-0"

ARCHITECTURAL ELEMENTS

- ① SS MTL ROOF
- ② PORCH
- ③ RECTANGULAR WINDOW
- ④ STUCCO BANDS (2 SIDES)

PAINT SCHEDULE

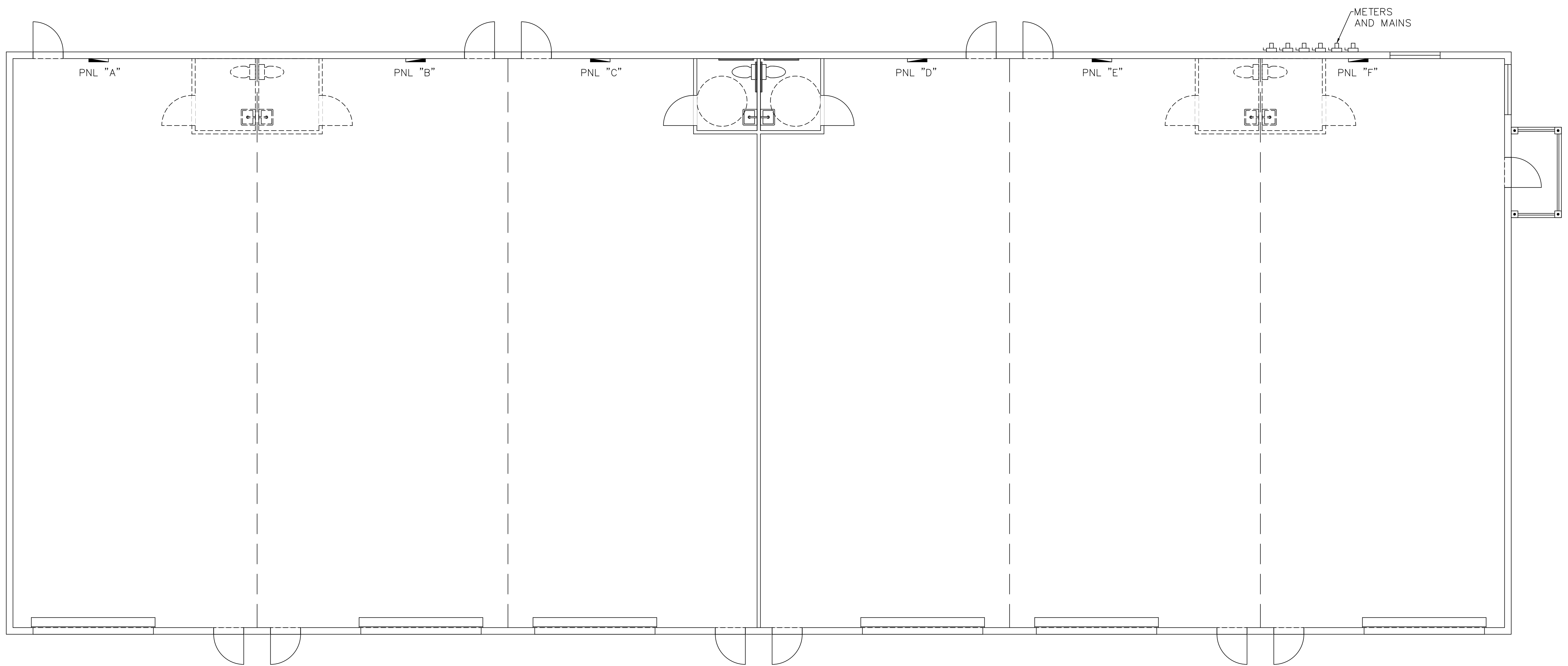
- A SW 9080 HUSHED AUBURN
- B SW 6140 MODERATE WHITE
- C METALLIC

6" STUCCO BAND (TYP)

FRESNILLO BUILDING #2
COMMERCE LAKES DR. PORT ST LUCIE, FL

PAUL WELCH INC.
MECHANICAL ELECTRICAL CIVIL ENGINEERING
1984 S.W. BILTMORE ST. SUITE #114
PORT ST. LUCIE, FL 34984
PHONE (772) 785-9888 E-MAIL PWELCHINC@AOL.COM
PAUL WELCH, P.E. FLA REG NO. 29945

SHEET NUMBER
3 OF 6



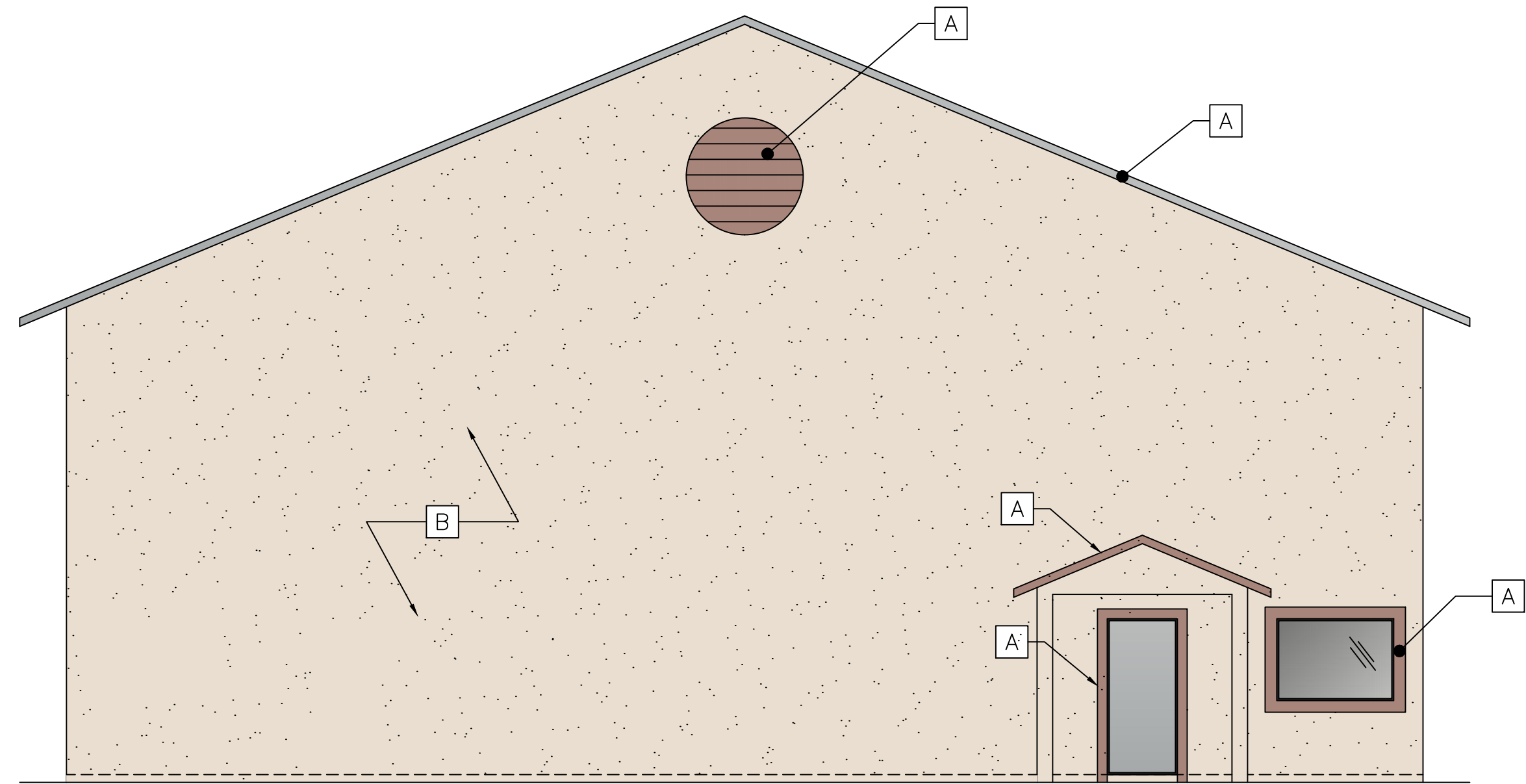
ELECTRICAL PLAN

3/16" = 1'-0"

FRESNILLO BUILDING #2
 COMMERCE LAKES DR. PORT ST LUCIE, FL

PAUL WELCH INC.
 MECHANICAL ELECTRICAL CIVIL ENGINEERING
 1984 S.W. BILTMORE ST. SUITE #114
 PORT ST. LUCIE, FL 34984
 PHONE (772) 785-9888 E-MAIL PWELCHINC@AOL.COM
 PAUL WELCH, P.E. FLA REG NO. 29945

SHEET NUMBER
 4 OF 6

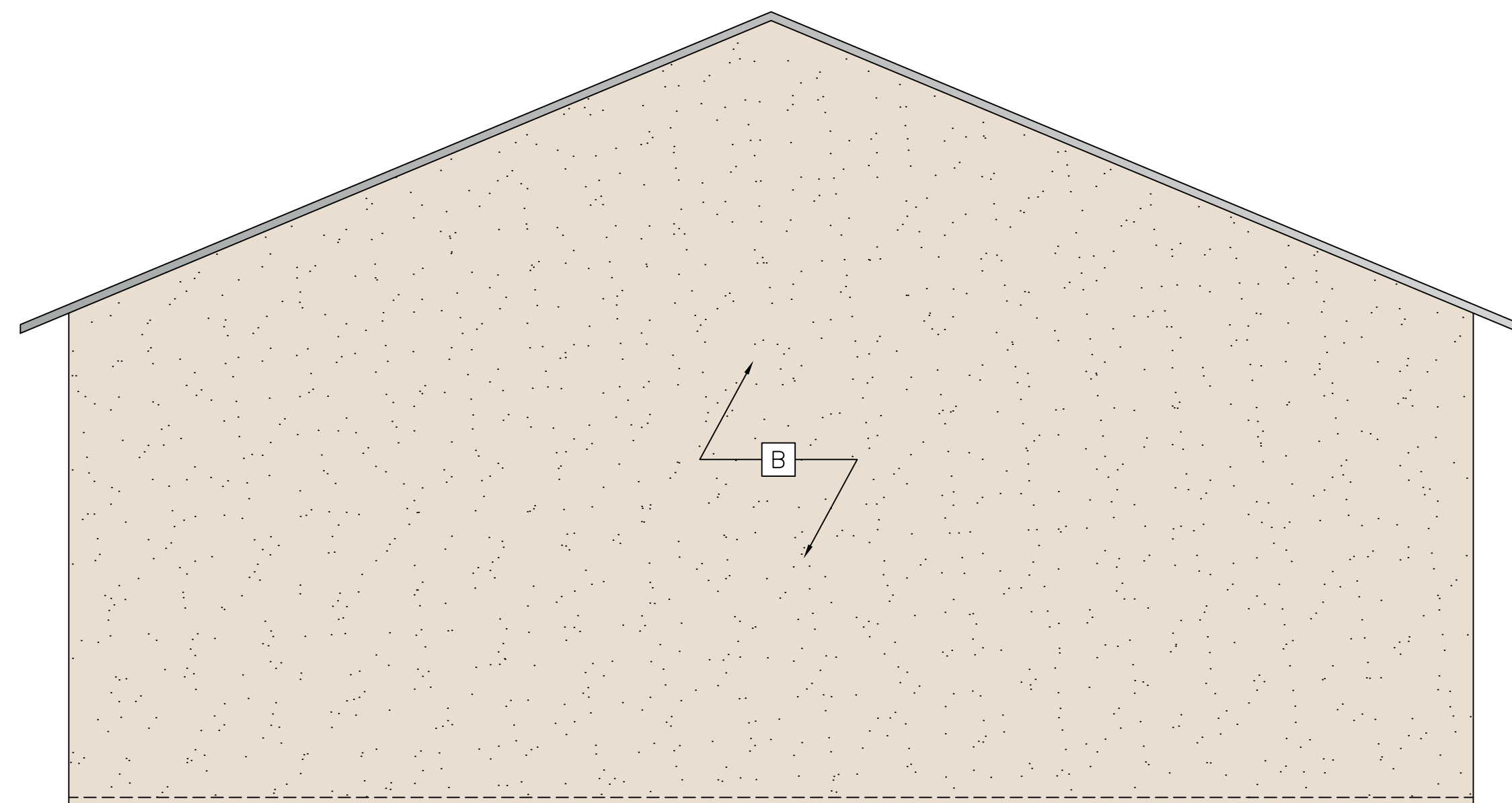


WEST ELEVATION

3/16" = 1'-0"

PAIN T SCHEDULE

- A SW 9080 HUSHED AUBURN
- B SW 6140 MODERATE WHITE
- C METALLIC



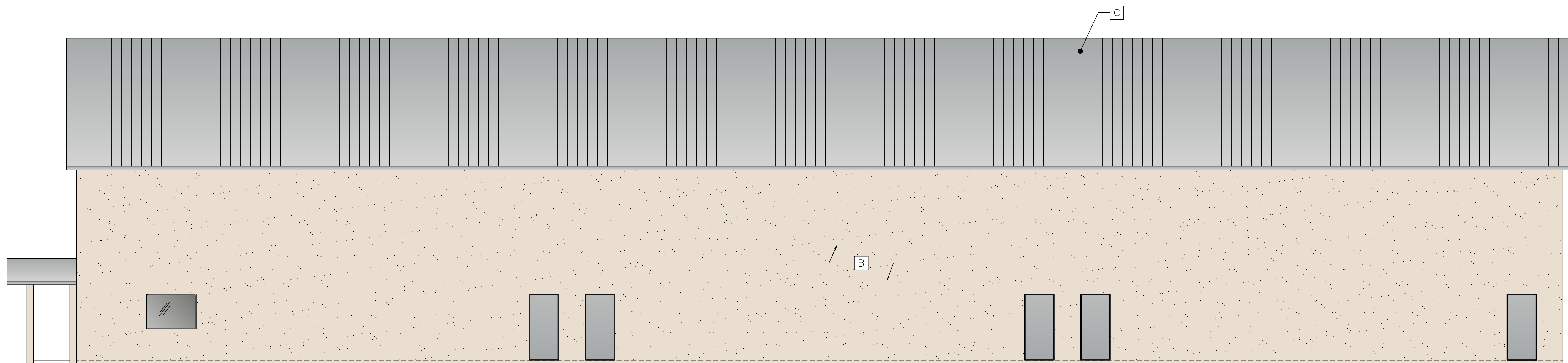
EAST ELEVATION

3/16" = 1'-0"

FRESNILLO BUILDING #2
 COMMERC E LAKES DR. PORT ST LUCIE, FL

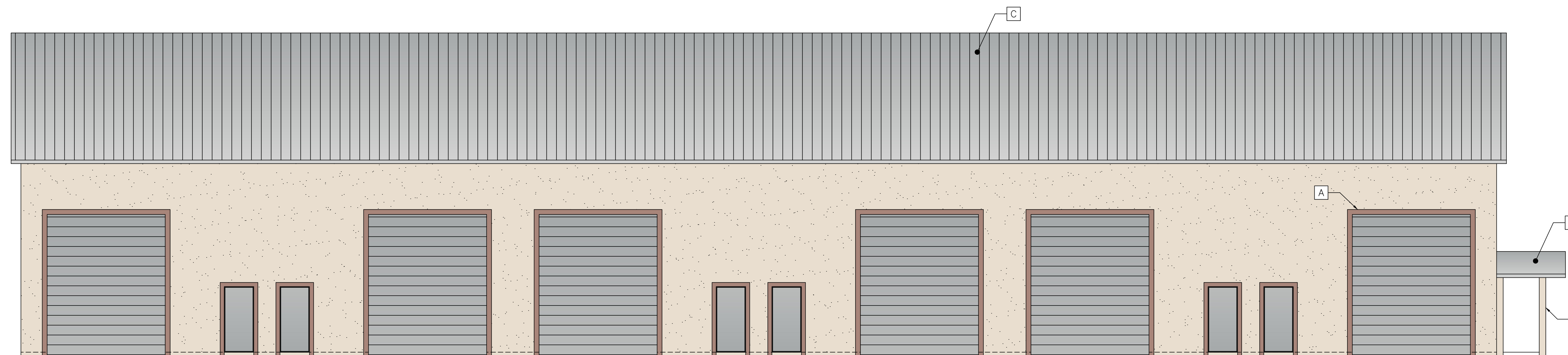
PAUL WELCH INC.
 MECHANICAL ELECTRICAL CIVIL ENGINEERING
 1984 S.W. BILTMORE ST. SUITE #114
 PORT ST. LUCIE, FL 34984
 PHONE (772) 785-9888 E-MAIL PWELCHINC@AOL.COM
 PAUL WELCH, P.E. FLA REG NO. 29945

SHEET NUMBER
 5 OF 6



SOUTH ELEVATION

3/16" = 1'-0"



NORTH ELEVATION

3/16" = 1'-0"

PAIN T SCHEDULE

- A SW 9080 HUSHED AUBURN
- B SW 6140 MODERATE WHITE
- C METALLIC

FRESNILLO BUILDING #2
 COMMERC E LAKES DR. PORT ST LUCIE, FL

PAUL WELCH INC.
 MECHANICAL ELECTRICAL CIVIL ENGINEERING
 1984 S.W. BILTMORE ST. SUITE #114
 PORT ST. LUCIE, FL 34984
 PHONE (772) 785-9888 E-MAIL PWELCHINC@AOL.COM
 PAUL WELCH, P.E. FLA REG NO. 29945

