

Planting Specifications

NAMES AND GRADES
 PLANT SPECIES AND SIZE SHALL CONFORM TO THOSE INDICATED ON THE DRAWINGS. NOMENCLATURE SHALL CONFORM TO STANDARDIZED PLANT NAMES, 1942 EDITION. ALL NURSERY STOCK SHALL BE IN ACCORDANCE WITH GRADES AND STANDARDS FOR NURSERY PLANTS PARTS 1 & 2, LATEST EDITION PUBLISHED BY THE FLORIDA DEPARTMENT OF AGRICULTURE AND CONSUMER SERVICES. ALL PLANTS NOT OTHERWISE SPECIFIED AS BEING FLORIDA FANCY OR SPECIMEN SHALL BE "FLORIDA GRADE #1" OR BETTER AS DETERMINED BY THE FLORIDA DIVISION OF PLANT INDUSTRY. "SPECIMEN" MEANS AN EXCEPTIONALLY HEAVY, SYMMETRICAL, TIGHTLY KNIT PLANT, SO TRAINED OR FAVORED IN ITS DEVELOPMENT THAT FIRST APPEARANCE IS UNQUESTIONABLY AND OUTSTANDINGLY SUPERIOR IN FORM, NUMBER OF BRANCHES, COMPACTNESS AND SYMMETRY.

GENERAL REQUIREMENTS
 ALL PLANTS SHALL BE FRESHLY DUG, SOUND, HEALTHY, VIGOROUS, WELL BRANCHED AND FREE OF DISEASE AND INSECT EGGS AND LARVAE AND SHALL HAVE ADEQUATE ROOT SYSTEMS. TREES FOR PLANTING ROWS SHALL BE UNIFORM IN SIZE AND SHAPE. ALL MATERIALS SHALL BE SUBJECT TO APPROVAL BY THE LANDSCAPE ARCHITECT. WHERE ANY REQUIREMENTS ARE OMITTED FROM THE PLANT LIST, THE PLANTS FURNISHED SHALL BE NORMAL FOR THE VARIETY. PLANTS SHALL BE PRUNED PRIOR TO DELIVERY ONLY UPON THE APPROVAL OF THE LANDSCAPE ARCHITECT.

CONTAINER GROWN STOCK
 ALL CONTAINER GROWN STOCK SHALL BE HEALTHY, VIGOROUS, WELL ROOTED PLANTS AND ESTABLISHED IN THE CONTAINER IN WHICH THEY ARE SOLD. THE PLANTS SHALL HAVE TOPS WHICH ARE GOOD QUALITY AND IN A HEALTHY GROWING CONDITION. AN ESTABLISHED CONTAINER GROWN PLANT SHALL BE GROWN IN THAT CONTAINER SUFFICIENTLY LONG ENOUGH FOR THE NEW FIBROUS ROOTS TO HAVE DEVELOPED SO THAT THE ROOT MASS WILL RETAIN ITS SHAPE AND HOLD TOGETHER WHEN REMOVED FROM THE CONTAINER. PLANTS ROOT BOUND IN CONTAINERS ARE UNACCEPTABLE.

MEASUREMENTS
 TREES: HEIGHT SHALL BE MEASURED FROM GROUND TO THE AVERAGE HEIGHT OF CANOPY. SPREAD SHALL BE MEASURED TO THE END OF BRANCHING EQUALLY AROUND THE CROWN FROM THE CENTER OF THE TRUNK. MEASUREMENTS ARE NOT TO INCLUDE ANY TERMINAL GROWTH. SINGLE TRUNK TREES SHALL BE FREE OF V-CROTCHES THAT COULD BE POINTS OF WEAK LIMB STRUCTURE OR DISEASE INFESTATION.
 SHRUBS: HEIGHT SHALL BE MEASURED FROM THE GROUND TO THE AVERAGE POINT WHERE MATURE PLANT GROWTH STOPS. SPREAD SHALL BE MEASURED TO THE END OF BRANCHING EQUALLY AROUND THE SHRUB MASS. TERMINAL GROWTH NOT INCLUDED.
 PALMS: CLEAR TRUNK (CT) SHALL BE MEASURED FROM THE GROUND AT TIME OF INSTALLATION TO THE POINT WHERE THE MATURE AGED TRUNK JOINS THE IMMATURE OR GREEN PORTION OF THE TRUNK OR THE HEAD. OVERALL HEIGHT (OA) SHALL BE MEASURED FROM THE GROUND AT THE TIME OF INSTALLATION TO A POINT THREE QUARTERS THE LENGTH OF THE UNOPENED BUD. PALMS WITH MARKED OR BURNED TRUNKS WILL NOT BE ACCEPTED.

SOIL
 PLANTING SOIL FOR USE IN PREPARING BACKFILL FOR PLANT PITS SHALL BE ADDED AT A RATE OF 75% TO 25% EXISTING SOIL. THIS SOIL MIX SHALL BE USED IN ALL PLANT PITS EXCEPT SABAL PALMS WHICH SHALL BE BACKFILLED WITH CLEAN SAND. PLANTING SOIL SHALL BE A FERTILE, FRAGILE NATURAL TOP SOIL OF LOAMY CHARACTER. IT SHALL CONTAIN 40 TO 50% RECOMPOSED ORGANIC MATTER AND SHALL BE FREE FROM HEAVY CLAY, STONES, LIMES, PLANTS, ROOTS OR OTHER FOREIGN MATTER OR NOXIOUS WEEDS. IT SHALL NOT CONTAIN TOXIC SUBSTANCES WHICH MAY BE HARMFUL TO PLANT GROWTH.

LANDSCAPE NOTE
 THE LANDSCAPE ARCHITECT OF RECORD (LA) HAS ADVISED THE DEVELOPER AND/OR PROPERTY OWNER THAT PLANTING TREES IN CLOSE PROXIMITY TO EACH OTHER, STRUCTURES OR FLATWORK COULD RESULT IN GROWTH PROBLEMS WITH THE TREES, ASSOCIATED PLANT MATERIAL AND/OR SOD AND THE CLIENT HAS DIRECTED THE LA TO DESIGNATE THE TREES AND PLANT MATERIAL AS SHOWN HEREIN; AS SUCH, THE LA SHALL NOT BE HELD LIABLE FOR ANY ADVERSE EFFECTS TO ANY TREES, PALMS, PLANT MATERIAL, SOD, IRRIGATION, FLATWORK, STRUCTURES, HARDSCAPE ELEMENTS, VEHICLES, PEOPLE OR ANIMALS RESULTING FROM THE SPACING OR LOCATION OF TREES AND PLANT MATERIAL SHOWN HEREIN.

COMMERCIAL FERTILIZER
 TWO FERTILIZERS SHALL BE USED IN ALL TYPES OF PLANTINGS, EXCEPT PALMS. GRANULAR FERTILIZER SHALL BE UNIFORM IN COMPOSITION, DRY AND FREE FLOWING. THIS FERTILIZER SHALL BE DELIVERED TO THE SITE IN THE ORIGINAL UNOPENED BAGS EACH BEARING THE MANUFACTURERS STATEMENT OF ANALYSIS, AND SHALL MEET THE FOLLOWING REQUIREMENTS: 6% NITROGEN, 6% PHOSPHOROUS AND 6% POTASSIUM. TABLET FERTILIZER (AGRIFORM OR EQUAL) IN 21 GRAM SIZE SHALL MEET THE FOLLOWING REQUIREMENTS: 20% NITROGEN, 10% PHOSPHOROUS AND 5% POTASSIUM. THE TWO FERTILIZERS WILL BE APPLIED AT THE FOLLOWING RATES:
 1 GALLON: 1/4 LB OF 6-6-6 # 4 AGRIFORM TABLET
 3 GALLON: 1/3 LB OF 6-6-6 # 2 AGRIFORM TABLETS
 7-15 GALLON: 1/2 LB OF 6-6-6 # 4 AGRIFORM TABLETS
 1'-6" CALIPER: 2LBS OF 6-6-6 PER 1" CALIPER # 2 AGRIFORM TABLETS PER 1" OF CALIPER.
 6" AND LARGER: 3LBS OF 6-6-6 PER 1" CALIPER # 2 AGRIFORM TABLETS PER 1" CALIPER.
 *FLORIDA EAST COAST PALM SPECIAL SHALL BE APPLIED TO ALL PALMS AT INSTALLATION AT A RATE OF 1/2 LB PER INCH OF TRUNK CALIPER UNLESS OTHERWISE SPECIFIED.

MULCH
 MULCH MATERIAL SHALL BE 3" DEPTH OF NON-CYPRESS GRADE BY SHREDDED MULCH MOISTENED AT THE TIME OF APPLICATION TO PREVENT WIND DISPLACEMENT.

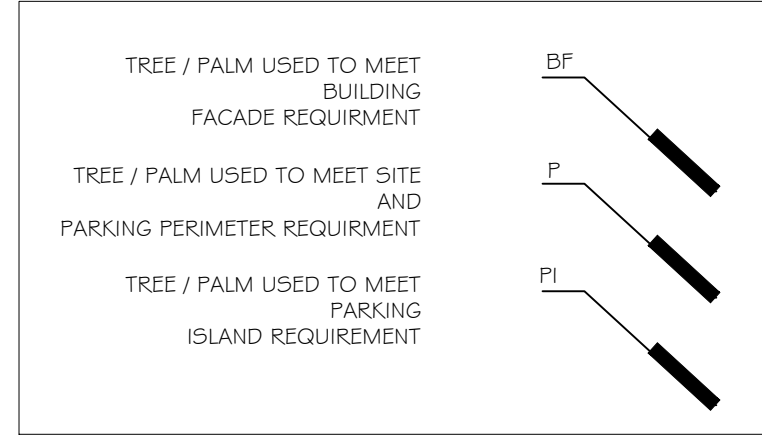
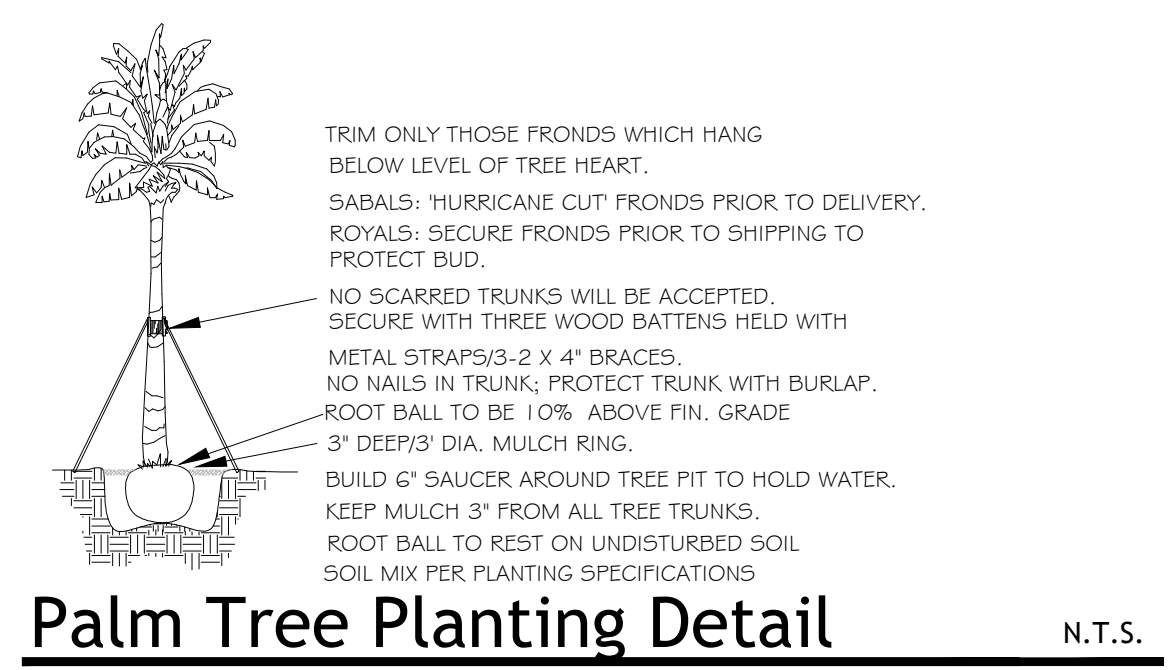
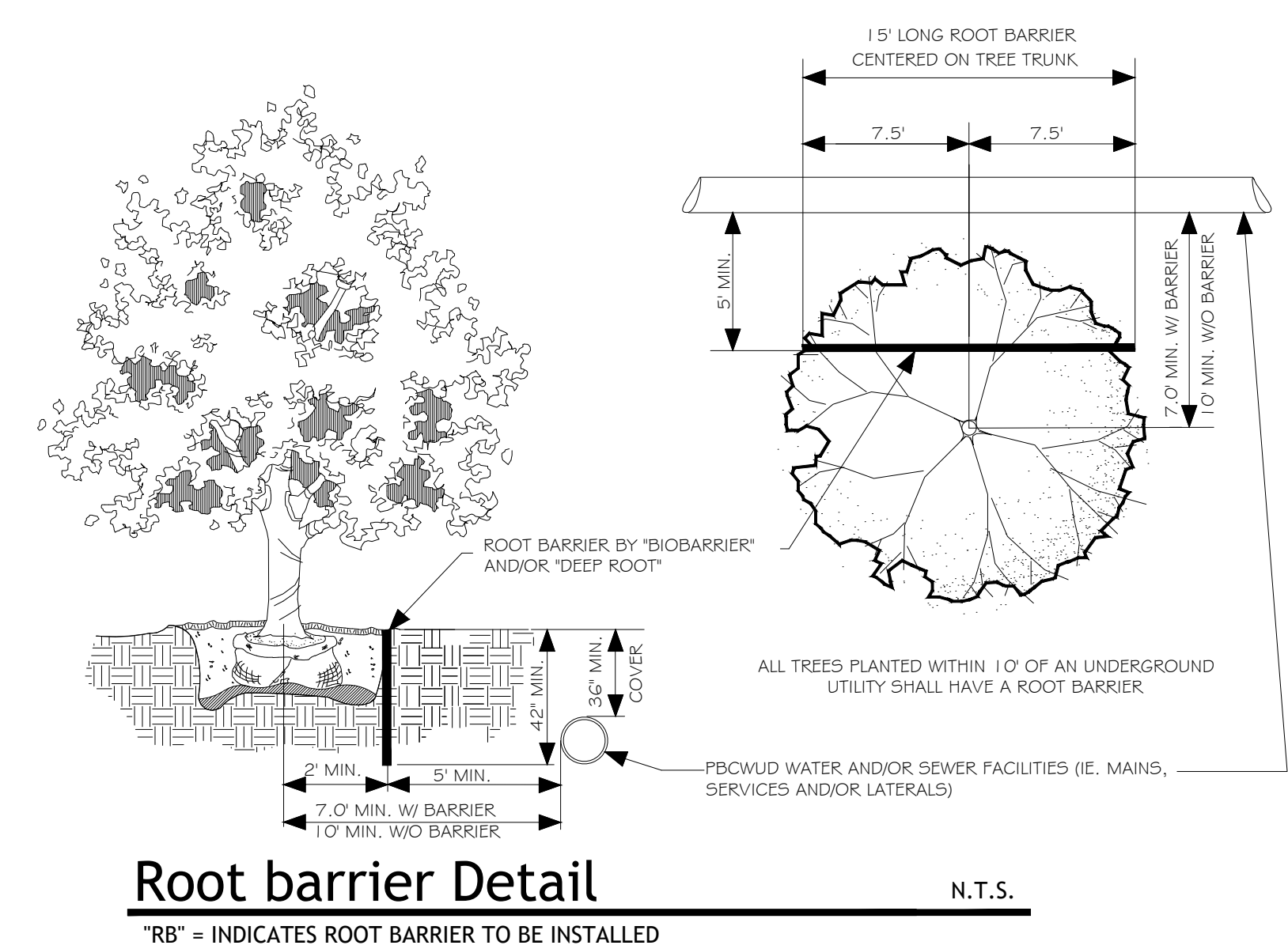
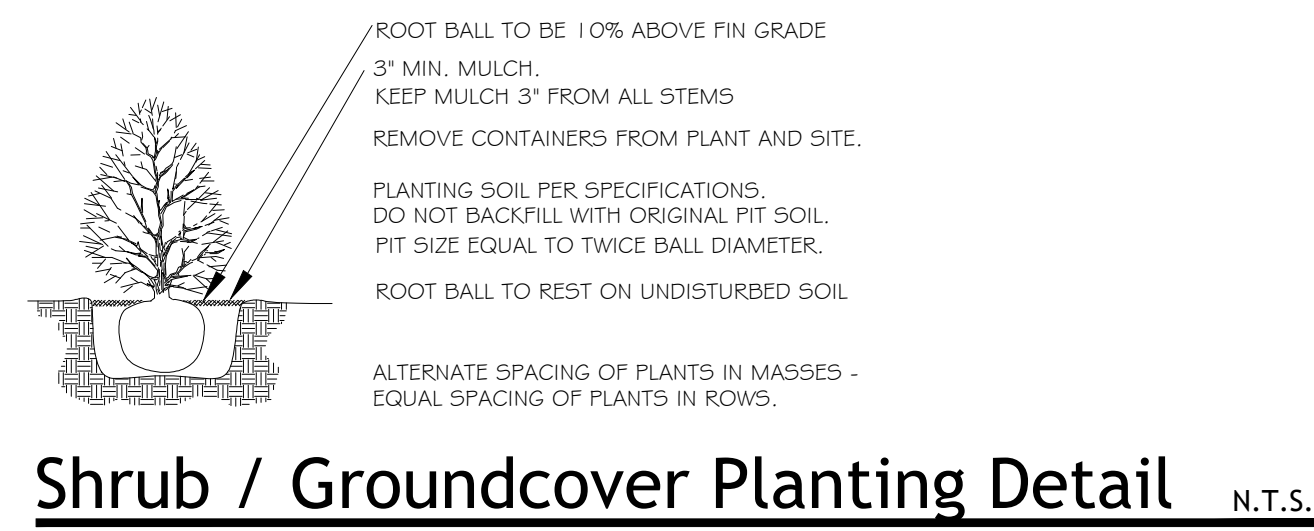
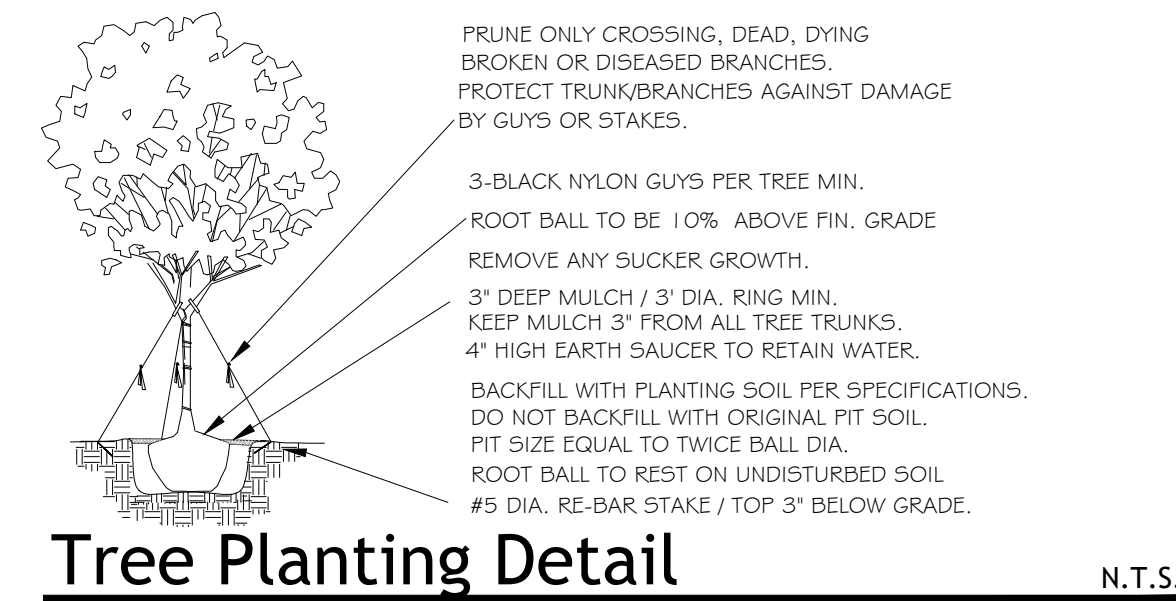
SOD
 SOD SHALL MEET FLORIDA STATE PLANT BOARD SPECIFICATION, ABSOLUTELY TRUE TO VARIETY, TYPE, AND FREE FROM WEEDS, FUNGUS, INSECTS AND DISEASES OF ANY KIND.

SUBSTITUTIONS
 NO SUBSTITUTIONS OF PLANT MATERIAL TYPES OR SIZES SHALL BE ALLOWED WITHOUT WRITTEN AUTHORIZATION FROM THE LANDSCAPE ARCHITECT AND CONTAINER GROWN MATERIAL WILL NOT BE ACCEPTED AS A SUBSTITUTE FOR.

THE QUANTITIES AND LOCATIONS SHOWN HEREIN ARE FOR REFERENCE ONLY AND MAY CHANGE TO ACCOMMODATE FIELD CONDITIONS OR DESIGN CHANGES UNLESS THEY ARE REQUIRED TO SATISFY CODE REQUIREMENTS OR CONDITIONS OF APPROVAL BY THE GOVERNING AGENCY.

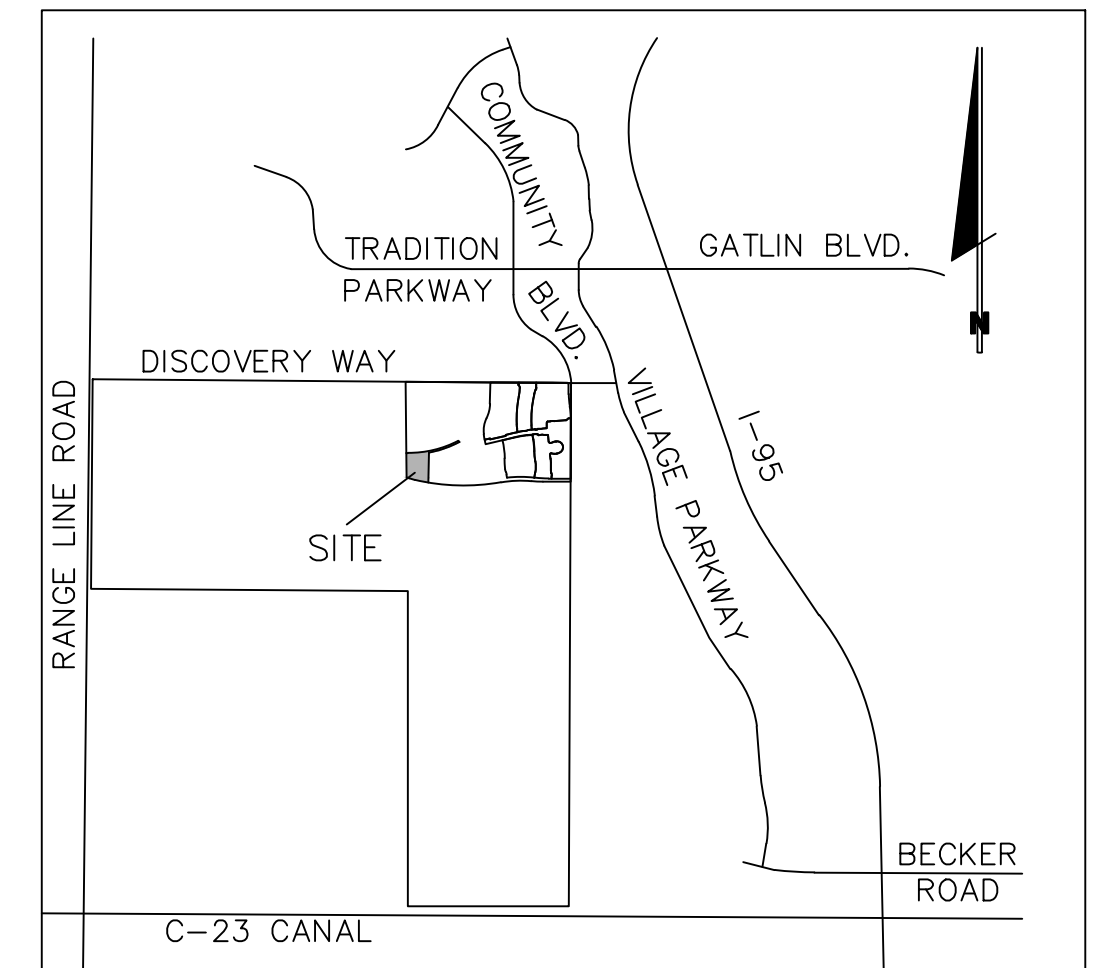
IRRIGATION NOTES:
 IRRIGATION SHALL BE PROVIDED VIA AN UNDERGROUND AUTOMATIC SPRINKLER SYSTEM FITTED WITH A RAIN SENSOR AND PROVIDING 100% COVERAGE

Planting Details



PSLUSD Notes:

- ALL LANDSCAPING WITHIN (PSLUSD) UTILITY EASEMENTS SHALL COMPLY WITH CHAPTER 153 OF THE CITY AND PSLUSD UTILITY STANDARDS, DETAILS AND POLICIES.
- NO LANDSCAPING SHALL BE PLANTED IN SUCH A MANNER AS TO ADVERSELY AFFECT UTILITY INSTALLATION, OPERATION AND MAINTENANCE.
- ALL EXISTING AND PROPOSED UNDERGROUND UTILITY MAINS, APPURTENANCES, AND EASEMENTS MUST BE SHOWN ON THE LANDSCAPE PLANS.
- TREES SHALL NOT BE PLANTED WITHIN 10 FEET OF ANY PSLUSD MAINS OR APPURTENANCES, EXCEPT AS ALLOWED BY CITY OF PSLUSD LANDSCAPE POLICY.
- NO LANDSCAPING OTHER THAN SOD GRASSES MAY BE PLANTED WITHIN A 5' RADIUS MAINTENANCE AREA OF ANY PSLUSD APPURTENANCE SUCH AS WATER METERS, BACKFLOW DEVICES, FIRE HYDRANTS, SANITARY SEWER CLEANOUTS, AND MANHOLES, AIR RELEASE VALVES, ETC
- UTILITY & DRAINAGE EASEMENTS, TO REMAIN CLEAR OF TREES.



RIVERLAND ASSOCIATES I, LLLP
 1600 SAWGRASS CORPORATE PKWY
 SUITE 400
 SUNRISE, FLORIDA 33323

GL HOMES
 1600 Sawgrass Corporate Parkway, Suite 400
 Sunrise, FL 33323
 (P) - 954.753.1730
 FL Cert. of Authorization No.27459

Project:
 RIVERLAND
 St Lucie County,
 FL

Sheet title:
 Sport/Racquet
 Facility, Landscape
 Notes & Details

Date:
 2023.01.18

Designed/Drawn by:
 JLK

Revisions:

Sheet number:

L.1

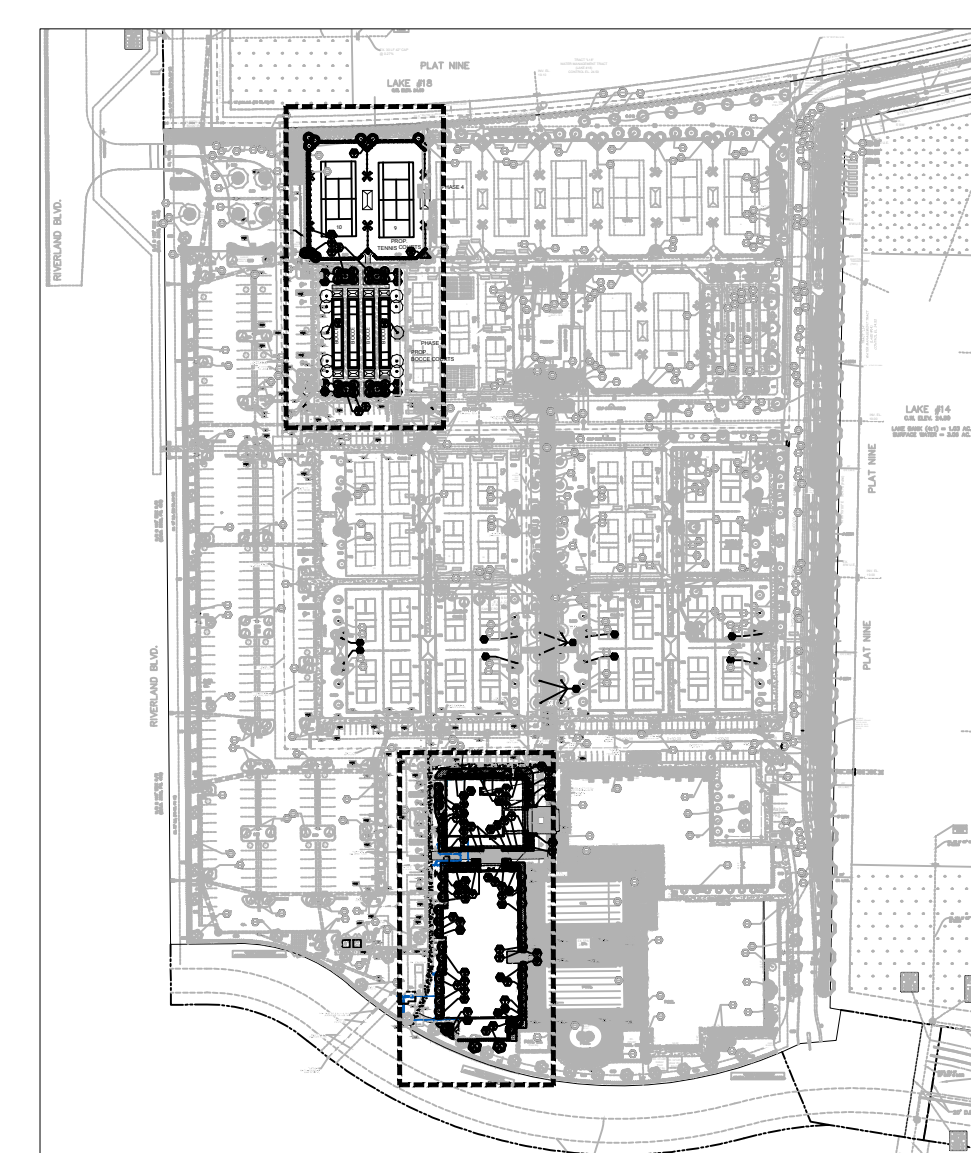
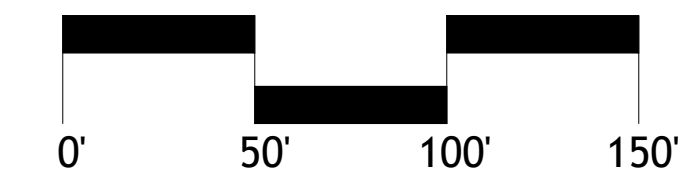
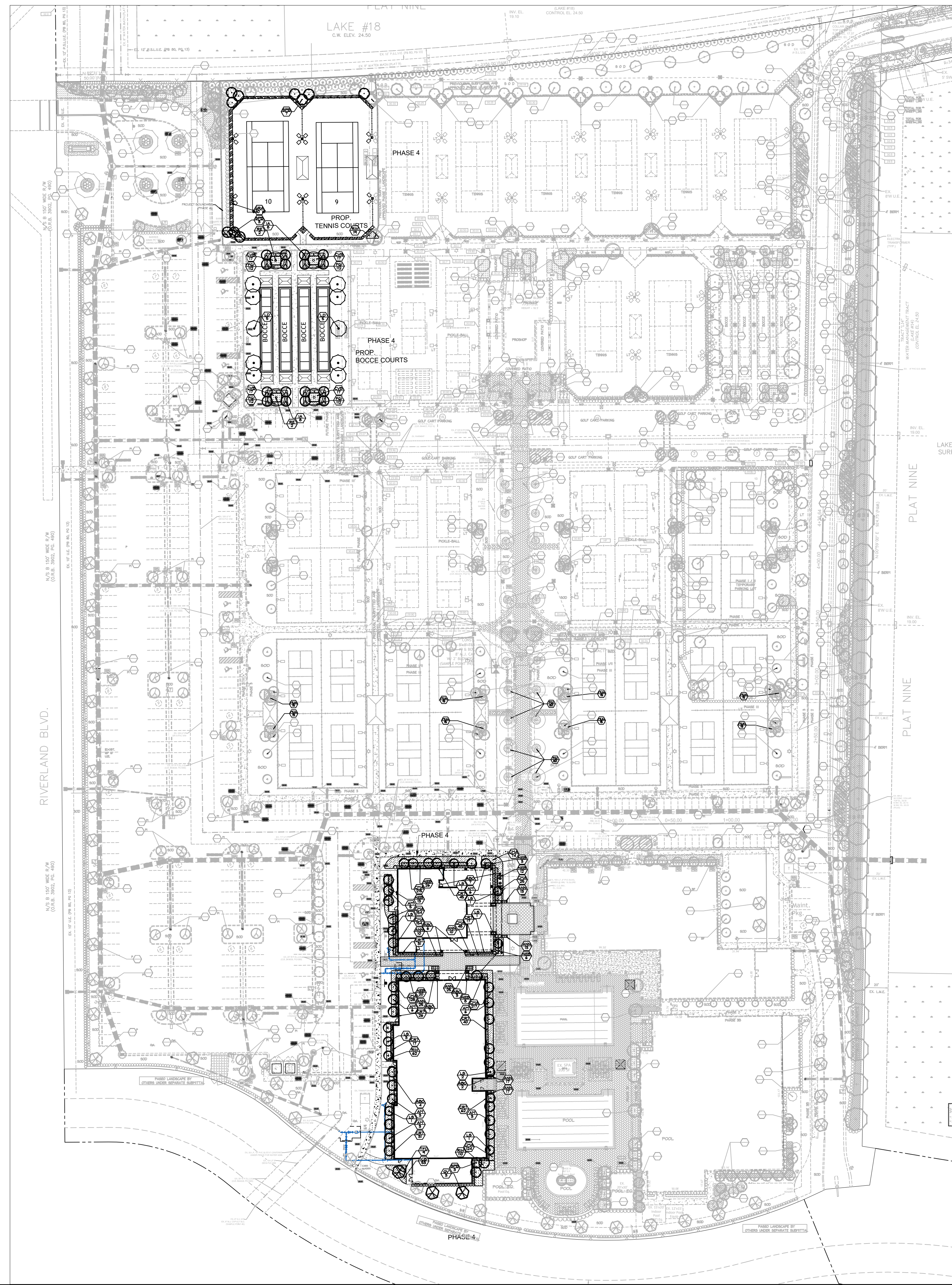
Seal:

Landscape Architect:
 Jason L. Keese
 RLA #6667398

City of PSL Project No. P20-068-A5
 PSLUSD File No. 52031-4

04/18/2023 11:35:54 am N:\GLHOMES\COM\Network\Data\Architecture\Riverland\Landscapes\Riverland Sports and Racquet Club\River Sports and Racquet Club\River Sports and Racquet Club\LANDSCAPE PLAN PHASE 4 R.L.dwg

04/18/2023 11:36:15 am \\G\HOMES\COM\Network\DATA\Architecture\Riverland\Riverland Landscape\Riverland Sports and Racquet Club\RVIV SPORTS RACQUET CLUB LANDSCAPE PLAN PHASE 4 R1.dwg



RIVERLAND ASSOCIATES I, LLLP
1600 SAWGRASS CORPORATE PKWY
SUITE 400
SUNRISE, FLORIDA 33323

GL HOMES
1600 Sawgrass Corporate
Parkway, Suite 400
Sunrise, FL 33323
(P) - 954.753.1730
FL Cert. of Authorization
No.27459

Project:
RIVERLAND
St Lucie County,
FL

Sheet title:
Sport/Racquet
Facility, Landscape
Plan Phase IV Overall

Date:
2023.01.18

Designed/Drawn by:
JLK

Revisions:

Sheet number:

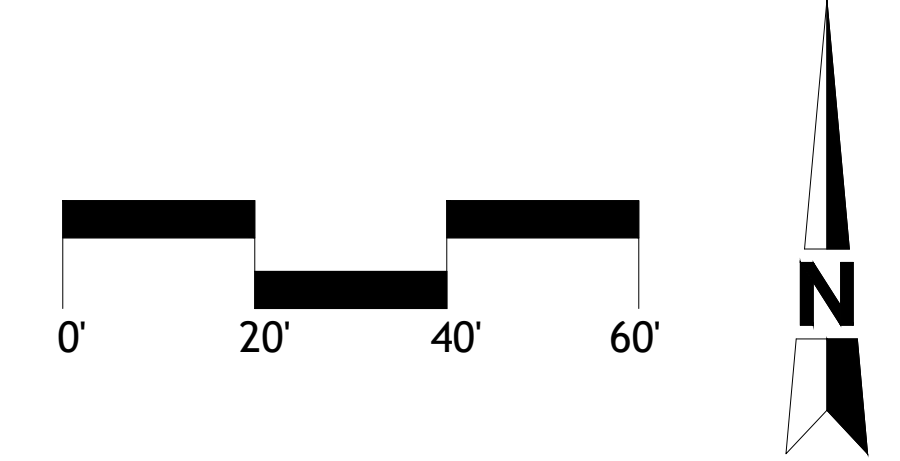
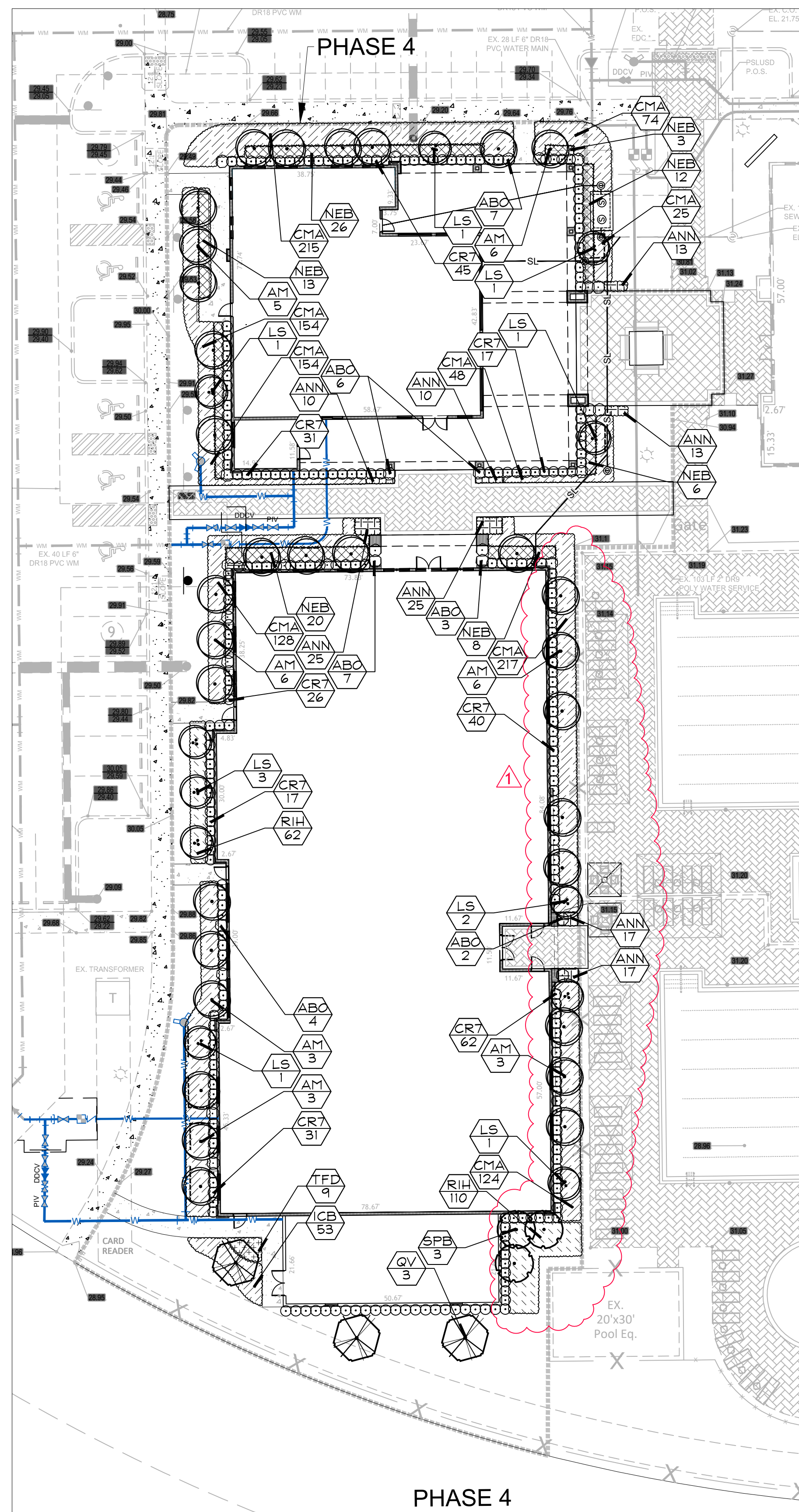
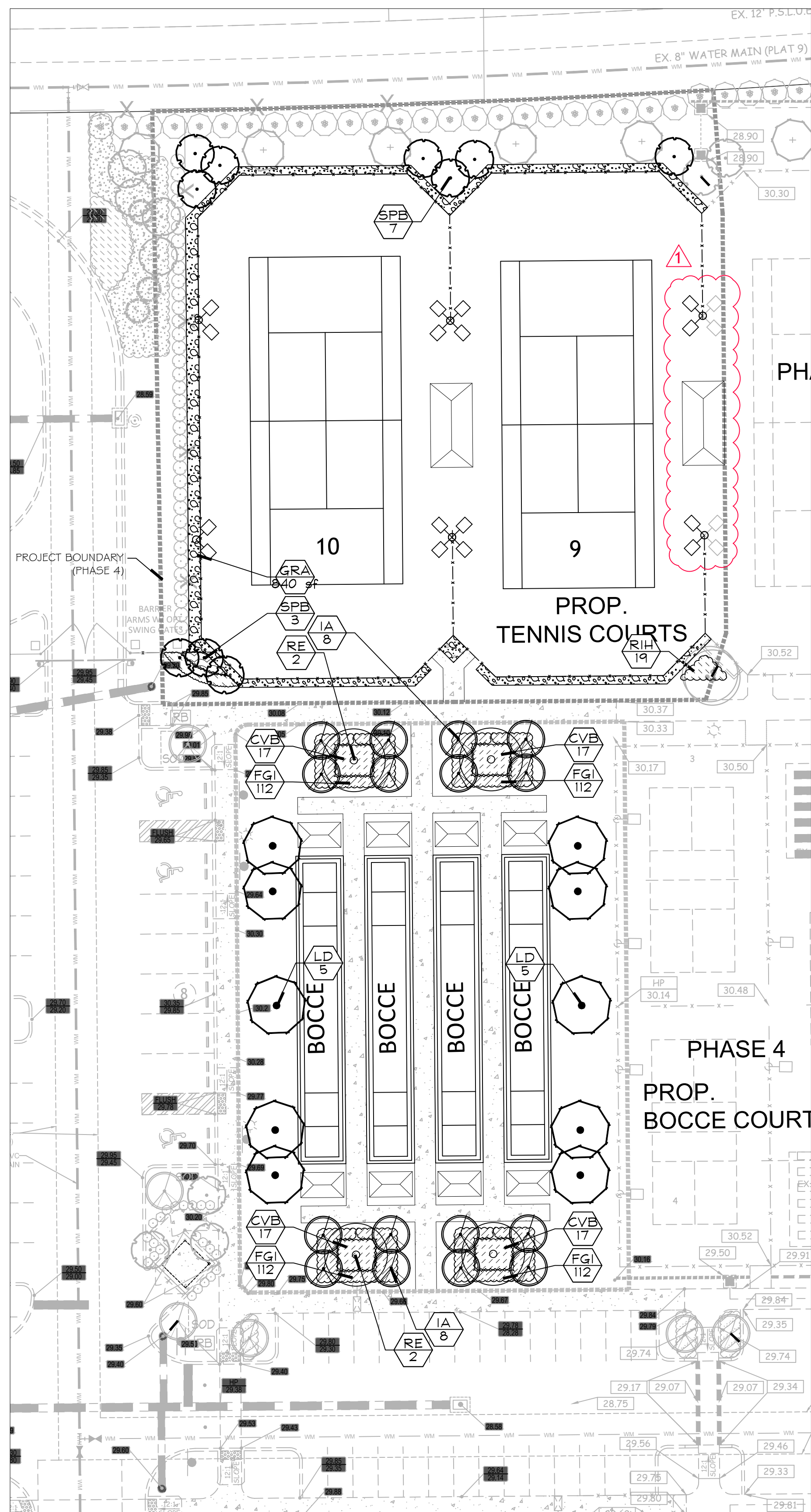
L4.1

Seal:

Landscape Architect:
Jason L. Keese
RLA #6667398

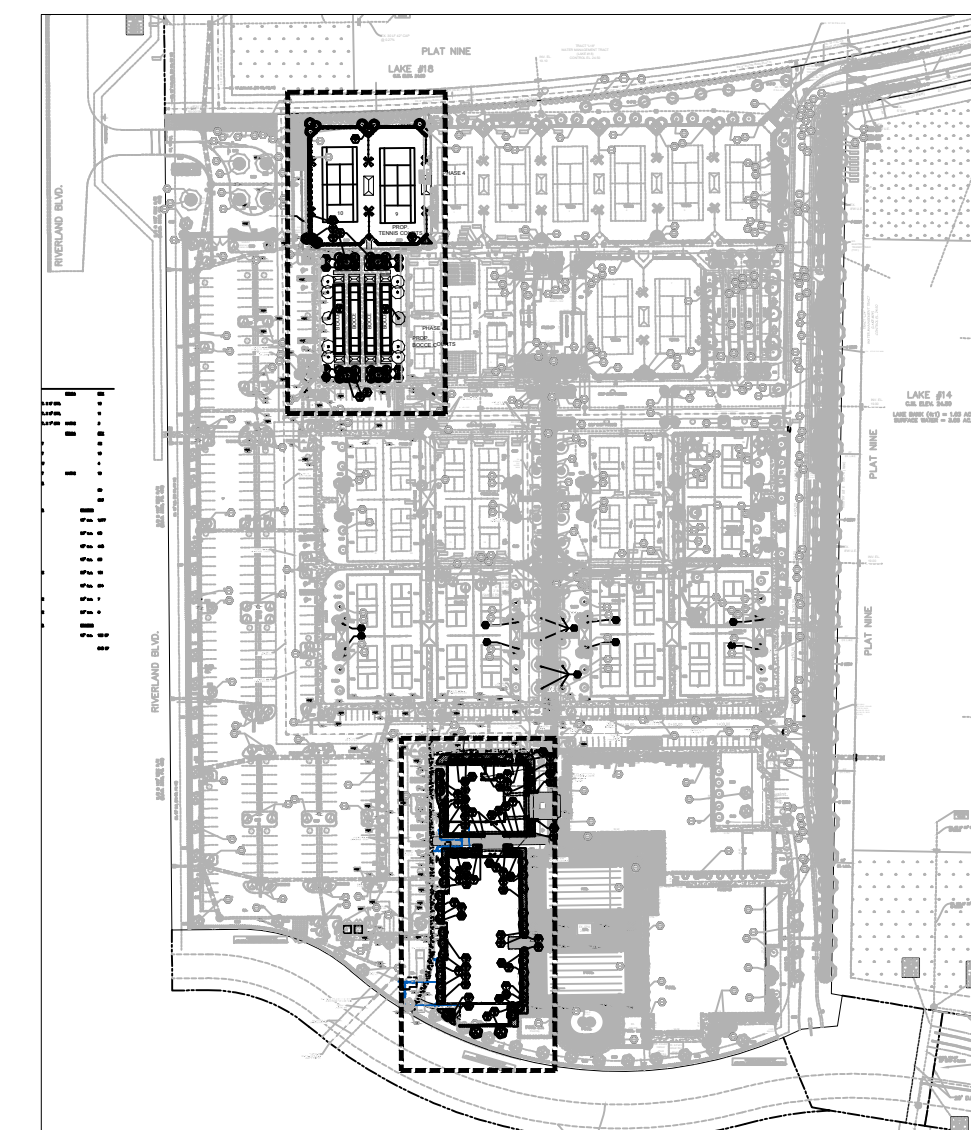
City of PSL Project No. P20-068-A5
PSLUSD File No. 52031-4

04/18/2023 11:36:33 am \\G\HOMES\COM\NetworkData\Architecture\Riverland\Riverland Landscape\Riverland Sports and Racquet Club\RV5 SPORTS RACQUET CLUB LANDSCAPE PLAN PHASE 4 R.L.dwg



PLANT SCHEDULE

TREES	BOTANICAL / COMMON NAME	CONT.	CAL.	SIZE	FIELD#	QTY.
	ILEX X ATTENUATA 'EAST PALATKA' / EAST PALATKA HOLLY	-	2.5" CAL	12' HT. X 6" SPR.		16
	LASERSTROGIA SPEGOSA / QUEEN'S CRAPE MYRTLE MULTI-TRUNK	-	2" CAL	10' HT. X 5" SPR.		11
	QUERCUS VIRGINIANA / SOUTHERN LIVE OAK	-	3.5" CAL	14' HT. X 7" SPR. NATIVE		3
PALM TREES	BOTANICAL / COMMON NAME	CONT.	CAL.	SIZE	FIELD#	QTY.
	ADONDIS MERRILLI / "CHRISTMAS PALM" SINGLE CANE	-		10' CT		32
	LIVISTONA DECORA / RIBBON PALM	-		12' CT		10
	ROYSTONIA ELATA / FLORIDA ROYAL PALM MATCHED HEAVY TRUNKS	-		12' GW		4
	SABAL PALMETTO / SABAL PALM - BOOTED STAGGERED	-		12' CT	NATIVE	13
SHRUBS	BOTANICAL / COMMON NAME	SIZE	FIELD#	FIELD#	QTY.	
	AECHMEA BLANCHETIANA / ORANGE BROMELIAD	15 GAL 36" OVERALL	FIELD#		29	
	CLUSIA ROSEA / PITCH APPLE	7 GAL 24" HT			269	
SHRUB AREAS	BOTANICAL / COMMON NAME	CONT.	FIELD#	FIELD#	SPACING	
	CARISSA MACROCARPA / EMERALD BLANKET CARISSA	3 GAL	18" HT X 18" SPR		18" o.c. 1,177	
	CODIAEUM VARIEGATUM 'BRAVO' / BRAVO CROTON	3 GAL	24" HT X 24" SPR		24" o.c. 68	
	FICUS MICROCARPA / GREEN ISLAND FICUS	3 GAL	18" HT X 18" SPR		18" o.c. 448	
	ILEX CORNUTA 'BURFORD' / BURFORDS HOLLY	3 GAL	18" HT X 18" SPR		18" o.c. 53	
	NEPHROLEPIS BISERRATA / GIANT SWORDFERN	3 GAL	18" HT X 18" SPR NATIVE		30" o.c. 101	
	RAPHIOLEPIS INDICA / INDIAN HAWTHORN	3 GAL	12" HT X 12" SPR		18" o.c. 214	
	SPARTINA BAKERI / SAND CORD GRASS	7 GAL	18" HT NATIVE		24" o.c. 7	
	TRIPSACUM FLORIDANUM / DWARF FAKAHATCHEE GRASS FULL	3 GAL	18" HT NATIVE		24" o.c. 9	
GROUND COVERS	BOTANICAL / COMMON NAME	CONT.	FIELD#	FIELD#	SPACING	
	ANNUALS / COLOR/SPECIES TO BE APPROVED BY LA OR CLIENT	4" POT	12" HT		12" o.c. 122 SF	
	GRAVEL / GRAVEL	NONE			840 SF	



RIVERLAND ASSOCIATES I, LLLP
 1600 SAWGRASS CORPORATE PKWY
 SUITE 400
 SUNRISE, FLORIDA 33323

GL HOMES
 1600 Sawgrass Corporate Parkway, Suite 400
 Sunrise, FL 33323
 (P) - 954.753.1730
 FL Cert. of Authorization No. 27459

Project:
 RIVERLAND
 St Lucie County, FL

Sheet title:
 Sport/Racquet Facility, Landscape Plan Phase IV

Date:
 2023.01.18

Designed/Drawn by:
 JLK

Revisions:
 ▲ 2023.04.18
 bldg walkway

Sheet number:

L4.2

Seal:

Landscape Architect:
 Jason L. Keese
 RLA #6667398

City of PSL Project No. P20-068-A5
 PSLUSD File No. 52031-4