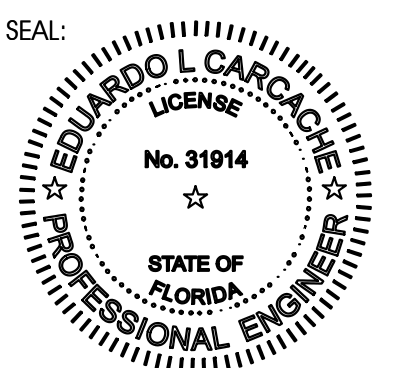
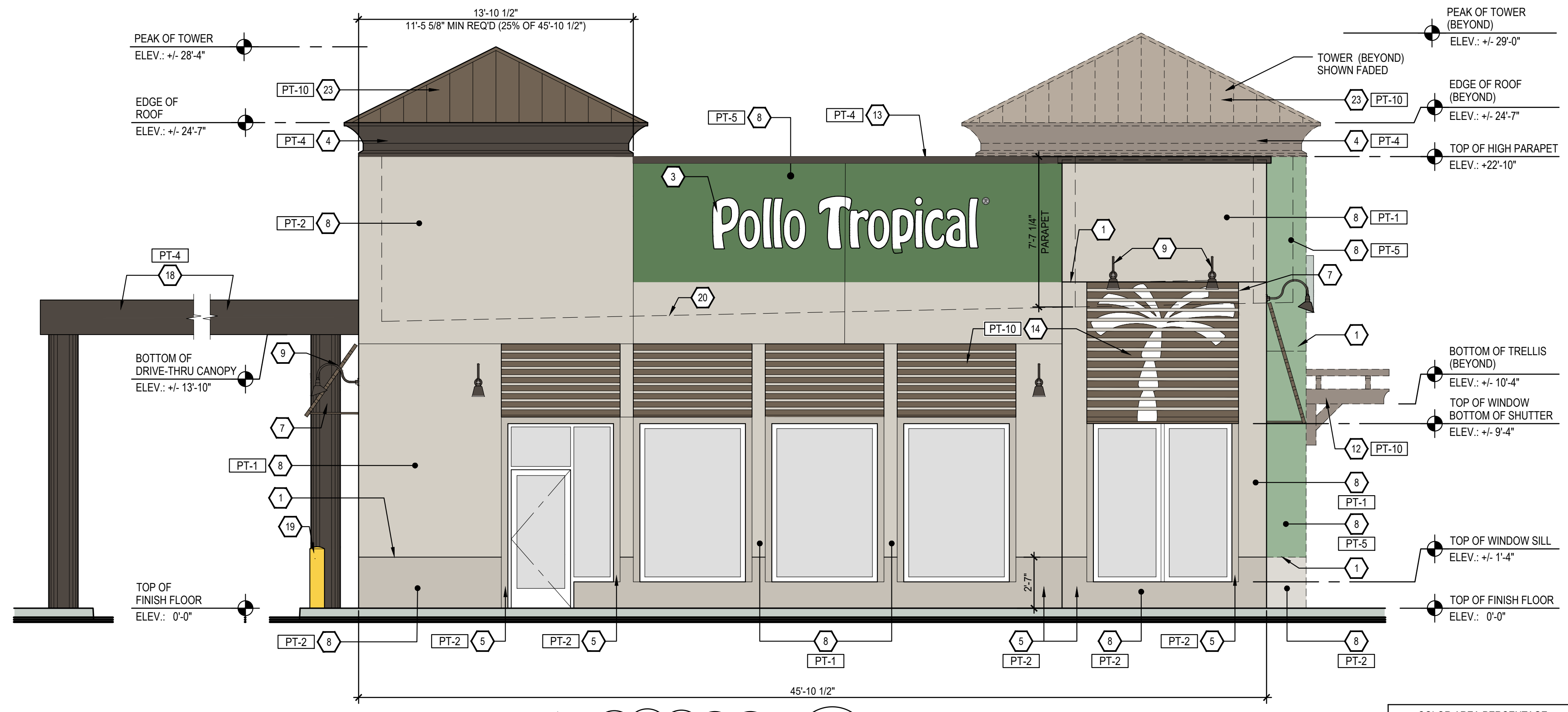


CKE GROUP, INC.
 engineering • architecture
 17190 ROYAL PALM BLVD.
 SUITE #2
 WESTON, FLORIDA 33326
 PH 305.558.4124
 FX 305.826.0619

CERTIFICATE OF AUTHORIZATION - 4432



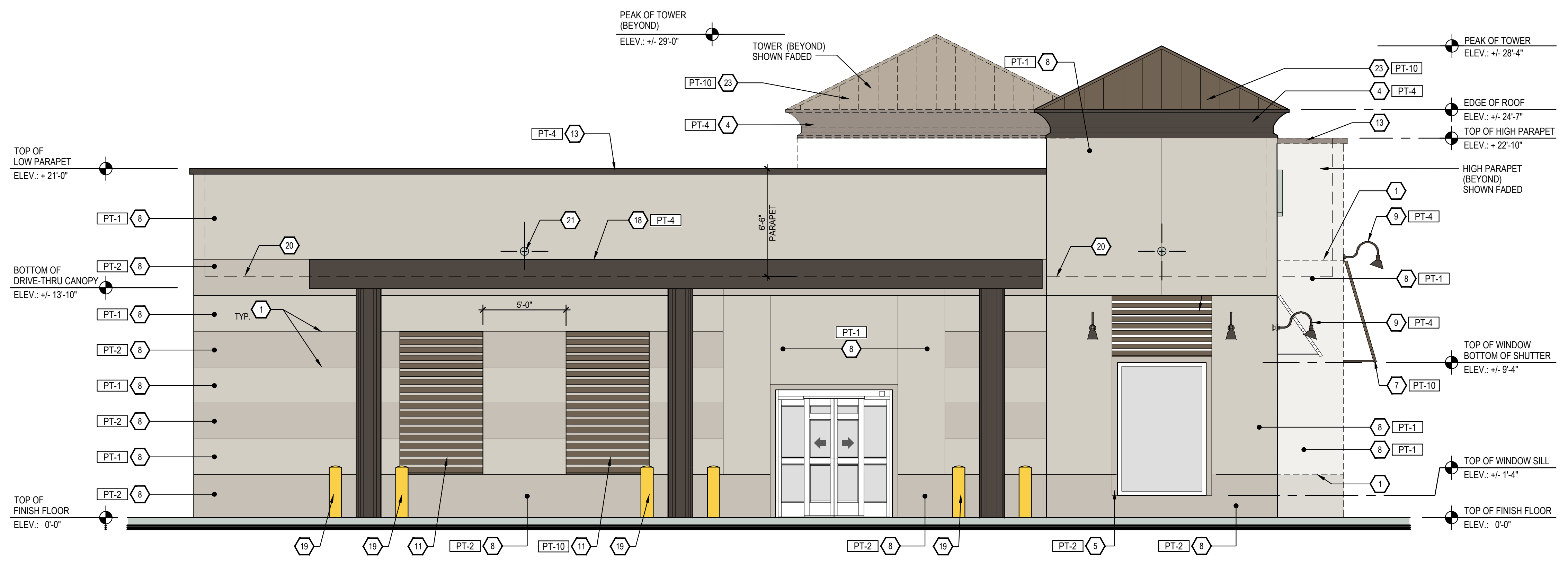
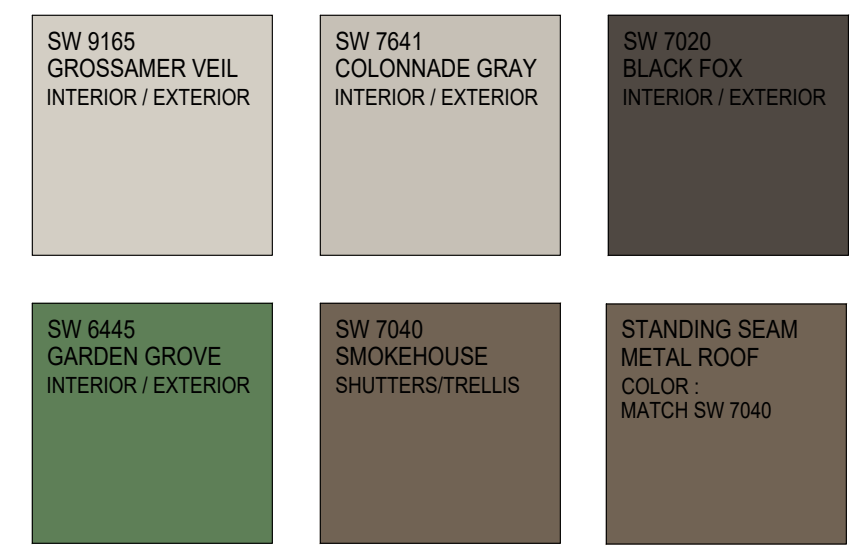
This item has been digitally signed by Eduardo L. Carcache on the date adjacent to the seal. Printed copies of the document are not considered signed and sealed and the signature must be verified on any electronic copies.
 EDUARDO L. CARCACHE, PE 31914
 MICHAEL E. CARCACHE, PE
 ARCHITECT-AR 103661
 STATE OF FLORIDA
 CKE GROUP, INC COA-4432



1 LEFT (NORTH) SIDE EXTERIOR ELEVATION
 SCALE: 1/4" = 1' 0"

COLOR AREA PERCENTAGE		
COLOR	PROPOSED	ALLOWED
PT-1 SW 9165	61%	100%
PT-2 SW 7641	14%	100%
PT-10 SW 7040	4%	20%
PT-3&4 SW 7020	4%	5%
PT-5 SW 6445	17%	20%

PAINT FINISH SCHEDULE			
TAG	DESCRIPTION	FLAME SPREAD RATING	COMMENTS
PT-1	MFG: SHERWIN WILLIAMS SERIES: REFER TO COMMENTS COLOR: GOSSAMER VEIL NUMBER: SW9165	CLASS A	3 COAT SYSTEM: 1. ONE COAT SW LX2W50, LOXON CONCRETE PRIMER 2. TWO COATS ON SW A6-100, A-100 EXTERIOR LATEX FLAT
PT-2	MFG: SHERWIN WILLIAMS SERIES: REFER TO COMMENTS COLOR: COLONNADE GRAY NUMBER: SW7641	CLASS A	3 COAT SYSTEM: 1. ONE COAT SW LX2W50, LOXON CONCRETE PRIMER 2. TWO COATS ON SW A6-100, A-100 EXTERIOR LATEX FLAT
PT-3	MFG: SHERWIN WILLIAMS SERIES: INTERIOR LATEX FLAT COLOR: BLACK FOX NUMBER: SW7020	CLASS A	3 COAT SYSTEM: 1. ONE COAT PROMAR 200 LOW VOC PRIMER 2. TWO COATS PROMAR 200 LW VOC B30-2500 INTERIOR LATEX FLAT
PT-4	MFG: SHERWIN WILLIAMS SERIES: KOOL SEAL SATIN COLOR: BLACK FOX NUMBER: SW7020	CLASS A	2 COAT SYSTEM: 1. TOUCH-UP OR FULL PRIMER, SW B66-310, PRO ACRYLIC UNIVERSAL WATER-BASED PRIMER 2. HIGH GLOSS, 2 COATS B65, PRO INDUSTRIAL WATER-BASED ACRYLON 100 URETHANE GLOSS
PT-5	MFG: SHERWIN WILLIAMS SERIES: REFER TO COMMENTS COLOR: GARDEN GROVE NUMBER: SW6445	CLASS A	3 COAT SYSTEM: 1. ONE COAT SW LX2W50, LOXON CONCRETE PRIMER 2. TWO COATS SW A6-100, A-100 EXTERIOR LATEX FLAT
PT-10	MFG: SHERWIN WILLIAMS SERIES: KOOL SEAL SATIN COLOR: SMOKEHOUSE NUMBER: SW7040	CLASS A	3 COAT SYSTEM: 1. REFER TO GENERAL NOTES FOR SURFACE PREPARATION 2. ONE COAT LX2W50, LOXON CONCRETE PRIMER (IF NEEDED) 3. TWO COATS KST053210-20 KOOL SEAL SATIN



2 REAR (EAST) EXTERIOR ELEVATION
 SCALE: 1/4" = 1' 0"

COLOR AREA PERCENTAGE		
COLOR	PROPOSED	ALLOWED
PT-1 SW 9165	64%	100%
PT-2 SW 7641	30%	100%
PT-10 SW 7040	3%	20%
PT-3&4 SW 7020	3%	5%
PT-5 SW 6445	0%	5%

KEY NOTES

- 3/4" "V" REVEAL IN EIFIS.
- EXTERIOR WALL GRAPHIC - BY SIGNAGE VENDOR UNDER SEPARATE PERMIT.
- ILLUMINATED SIGNAGE ON FACE OF BUILDING BY SIGNAGE VENDOR UNDER SEPARATE PERMIT. G.C. TO PROVIDE POWER AND BLOCKING AS REQUIRED. (SHOWN FOR ILLUSTRATIONAL PURPOSES ONLY.)
- CORNICE BY AWNEX. G.C. TO COORDINATE AS REQUIRED (SEPARATE PERMIT)
- WINDOW WOOD TRIM, PAINTED P-2, TYP.
- CANOPY BY AWNEX. G.C. TO PROVIDE BLOCKING AND POWER HOOK UP AS REQUIRED. REFER TO A-121 AND WALL SECTIONS FOR DETAILS. (SEPARATE PERMIT)
- FOCAL SHUTTER BY AWNEX. G.C. TO PROVIDE BLOCKING AS REQUIRED (SEPARATE PERMIT)
- 2' EXTERIOR FINISHING SYSTEM WITH INTEGRAL COLOR. FINISH AS INDICATED AND PER SPECIFICATION.
- GOOSENECK LIGHT. REFER TO A-121 AND WALL SECTIONS FOR ADDITIONAL INFORMATION.
- EXTERIOR WALL ARCHITECTURAL SHUTTER PANEL BY AWNEX. G.C. TO PROVIDE BLOCKING AS REQUIRED.
- EXTERIOR WALL GRAPHIC BY GRAPHIC MANUFACTURER. COORDINATE AS REQUIRED.
- TRELLIS BY AWNEX. G.C. TO PROVIDE BLOCKING AS REQUIRED (SEPARATE PERMIT)
- ALUMINUM PARAPET COPING TO BE PREFINISHED TO MATCH P-1
- SHUTTER BY AWNEX. G.C. TO PROVIDE BLOCKING AS REQUIRED (SEPARATE PERMIT)
- 3/4" "V" REVEAL IN EIFIS TO BE ALIGN.
- REAR DOOR. REFER TO DOOR SCHEDULE.
- EXTERIOR RAILING.
- METAL DRIVE THRU CANOPY STRUCTURE
- BOLLARD
- ROOF DECK LINE
- NOZZLE FOR OVERFLOW DRAIN FROM MAIN ROOF. LOCATE AS INDICATED ON 2 / A-202. SEE PLUMBING PLANS FOR MORE INFORMATION.
- CONNECT INTERNAL ROOF DRAIN TO STORM SYSTEM. REFER TO PLUMBING FOR ROOF DRAIN SIZE AND TO CIVIL DRAWINGS FOR CONTINUATION.
- STANDING SEAM METAL ROOF.
- ROOF ACCESS LADDER.

PRODUCT APPROVAL SPECS

EIFIS SYSTEM
 DRYWIT OUTSULATION PLUS DM SYSTEM
 FL PRODUCT APPROVAL = FL 2030-R6 (2030-11)
 MIAMI-DADE NOA = 12.0703.03

GENERAL NOTES

ELEVATION DESIGN AND COLORS MAY NOT BE MODIFIED WITHOUT APPROVAL FROM CITY OF PORT SAINT LUCIE
 NO MECHANICAL EQUIPMENT SHOULD BE VISIBLE FROM ABOVE THE HEIGHT OF THE PARAPET

NO.	DATE	REMARKS
06-10-26		
03-13-26		

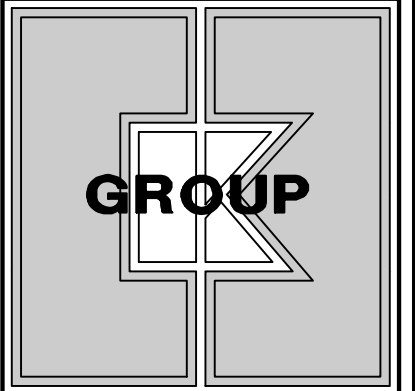
POLLO TROPICAL RESTAURANT

3201 SW PORT ST. LUCIE BLVD.
 PORT ST. LUCIE,
 ST. LUCIE COUNTY, FL.

PROJECT NO: 1942
 DATE: 01/28/2026

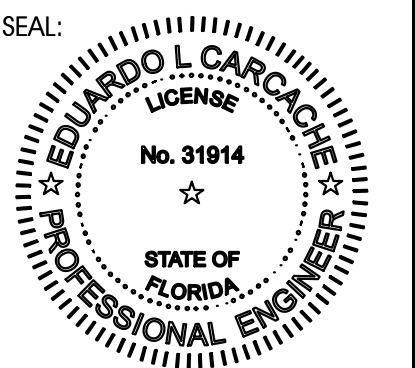
A201
 PROPOSED EXTERIOR ELEVATIONS
 SITE PLAN: P26-024
 SPECIAL EXCEPTION: P26-025
 PSLUSD: # 11-219-00
 CHECKED: EC. DRAWN: LV.

COPYRIGHT © 2026, CKE GROUP, INC. RESERVES COPYRIGHT & OTHER RIGHTS RESTRICTING THESE DOCUMENTS TO THE ORIGINAL SITE PURPOSE FOR WHICH THEY WERE PREPARED. REPRODUCTION, REPERCUSSION, OR ASSIGNMENT ARE PROHIBITED.



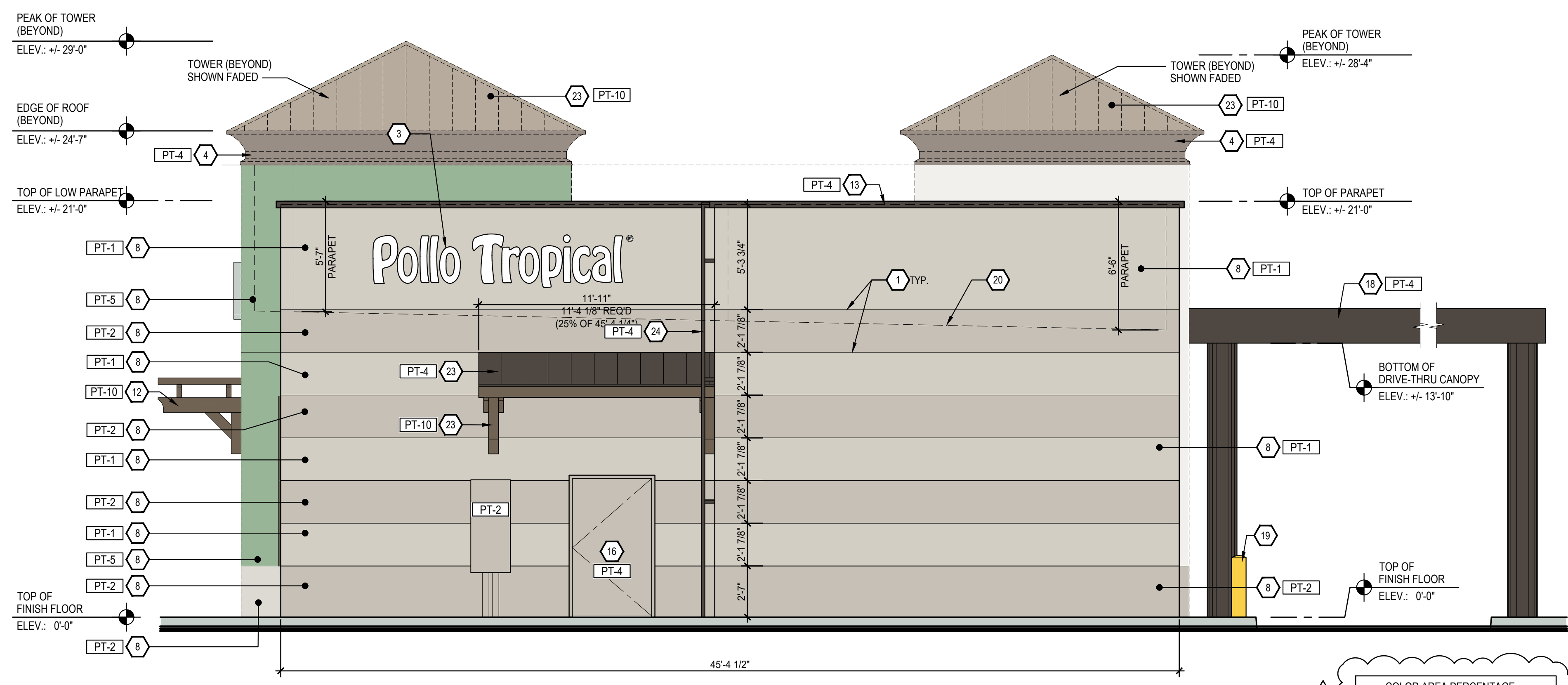
CKE GROUP, INC.
 engineering • architecture
 17190 ROYAL PALM BLVD.
 SUITE #2
 WESTON, FLORIDA 33326
 PH 305.558.4124
 FX 305.826.0619

CERTIFICATE OF AUTHORIZATION - 4432



This item has been digitally signed by Eduardo L. Carcache on the date adjacent to the seal. Printed copies of the document are not considered signed and sealed and the signature must be verified on any electronic copies.

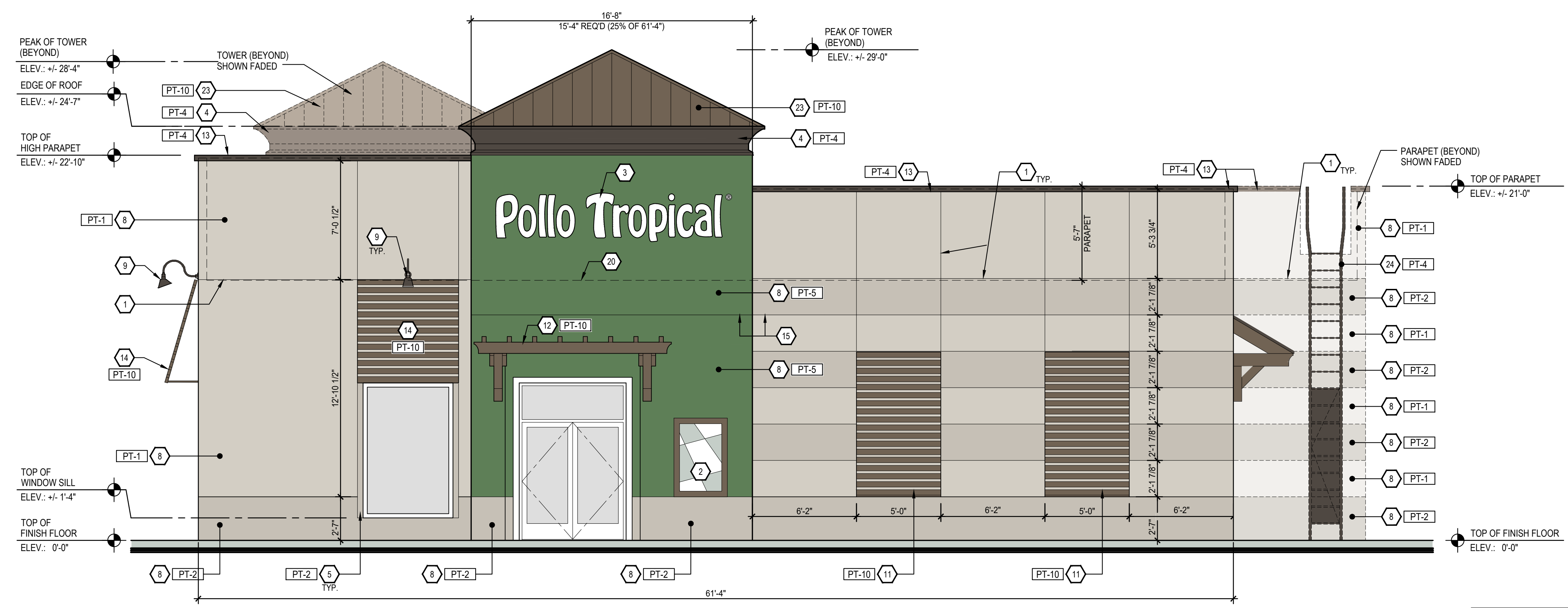
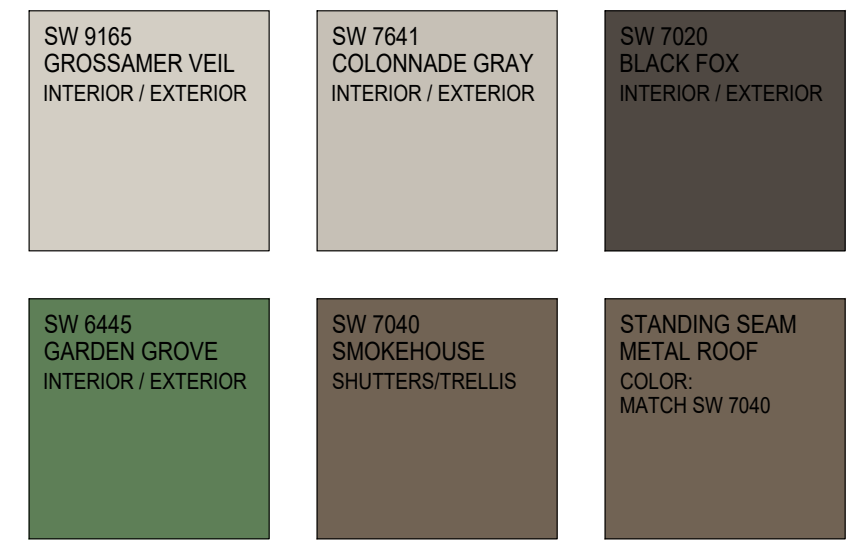
EDUARDO L. CARCACHE, PE 31914
 MICHAEL E. CARCACHE, PE ARCHITECT-AR 103661
 STATE OF FLORIDA
 CKE GROUP, INC COA-4432



1 RIGHT (SOUTH) SIDE EXTERIOR ELEVATION
 SCALE: 1/4" = 1' 0"

COLOR AREA PERCENTAGE		
COLOR	PROPOSED	ALLOWED
PT-1 SW 9165	49%	100%
PT-2 SW 7641	42%	100%
PT-10 SW 7040	1%	20%
PT-3 & 4 SW 7020	4%	5%
PT-5 SW 6445	4%	20%

PAINT FINISH SCHEDULE			
TAG	DESCRIPTION	FLAME SPREAD RATING	COMMENTS
PT-1	MFG: SHERWIN WILLIAMS SERIES: REFER TO COMMENTS COLOR: GOSSAMER VEIL NUMBER: SW9165	CLASS A	3 COAT SYSTEM: 1. ONE COAT SW LX2W50, LOXON CONCRETE PRIMER 2. TWO COATS ON SW A6-100, A-100 EXTERIOR LATEX FLAT
PT-2	MFG: SHERWIN WILLIAMS SERIES: REFER TO COMMENTS COLOR: COLONNADE GRAY NUMBER: SW7641	CLASS A	3 COAT SYSTEM: 1. ONE COAT SW LX2W50, LOXON CONCRETE PRIMER 2. TWO COATS ON SW A6-100, A-100 EXTERIOR LATEX FLAT
PT-3	MFG: SHERWIN WILLIAMS SERIES: INTERIOR LATEX FLAT COLOR: BLACK FOX NUMBER: SW7020	CLASS A	3 COAT SYSTEM: 1. ONE COAT PROMAR 200 LOW VOC PRIMER 2. TWO COATS PROMAR 200 LW VOC 890-2600 INTERIOR LATEX FLAT
PT-4	MFG: SHERWIN WILLIAMS SERIES: KOOL SEAL SATIN COLOR: BLACK FOX NUMBER: SW7020	CLASS A	2 COAT SYSTEM: 1. TOUCH-UP OR FULL PROMER, SW B66-310, PRO ACRYLIC UNIVERSAL WATER-BASED PRIMER 2. HIGH GLOSS: 2 COATS B65, PRO INDUSTRIAL WATER-BASED ACRYLON 100 URETHANE GLOSS
PT-5	MFG: SHERWIN WILLIAMS SERIES: REFER TO COMMENTS COLOR: GARDEN GROVE NUMBER: SW6445	CLASS A	3 COAT SYSTEM: 1. ONE COAT SW LX2W50, LOXON CONCRETE PRIMER 2. TWO COATS SW A6-100, A-100 EXTERIOR LATEX FLAT
PT-10	MFG: SHERWIN WILLIAMS SERIES: KOOL SEAL SATIN COLOR: SMOKEHOUSE NUMBER: SW7040	CLASS A	3 COAT SYSTEM: 1. REFER TO GENERAL NOTES FOR SURFACE PREPARATION 2. ONE COAT LX2W50, LOXON CONCRETE PRIMER (IF NEEDED) 3. TWO COATS KST053210-20 KOOL SEAL SATIN



2 FRONT (WEST) EXTERIOR ELEVATION
 SCALE: 1/4" = 1' 0"

COLOR AREA PERCENTAGE		
COLOR	PROPOSED	ALLOWED
PT-1 SW 9165	41%	100%
PT-2 SW 7641	22%	100%
PT-10 SW 7040	9%	20%
PT-3 & 4 SW 7020	3%	5%
PT-5 SW 6445	20%	20%

KEY NOTES

- 3/4" "V" REVEAL IN EIFS.
- EXTERIOR WALL GRAPHIC - BY SIGNAGE VENDOR UNDER SEPARATE PERMIT.
- ILLUMINATED SIGNAGE ON FACE OF BUILDING BY SIGNAGE VENDOR UNDER SEPARATE PERMIT. G.C. TO PROVIDE POWER AND BLOCKING AS REQUIRED. (SHOWN FOR ILLUSTRATIONAL PURPOSES ONLY.)
- CORNICE BY AWNEX. G.C. TO COORDINATE AS REQUIRED (SEPARATE PERMIT)
- WINDOW WOOD TRIM. PAINTED P-2, TYP.
- CANOPY BY AWNEX. G.C. TO PROVIDE BLOCKING AND POWER HOOK UP AS REQUIRED. REFER TO A-121 AND WALL SECTIONS FOR DETAILS. (SEPARATE PERMIT)
- FOCAL SHUTTER BY AWNEX. G.C. TO PROVIDE BLOCKING AS REQUIRED (SEPARATE PERMIT)
- 2" EXTERIOR FINISHING SYSTEM WITH INTEGRAL COLOR. FINISH AS INDICATED AND PER SPECIFICATION.
- GOOSENECK LIGHT. REFER TO A-121 AND WALL SECTIONS FOR ADDITIONAL INFORMATION.
- EXTERIOR WALL ARCHITECTURAL SHUTTER PANEL BY AWNEX. G.C. TO PROVIDE BLOCKING AS REQUIRED.
- EXTERIOR WALL GRAPHIC BY GRAPHIC MANUFACTURER. COORDINATE AS REQUIRED.
- TRELLIS BY AWNEX. G.C. TO PROVIDE BLOCKING AS REQUIRED (SEPARATE PERMIT)
- ALUMINUM PARAPET COPING TO BE PREFINISHED TO MATCH P-1
- SHUTTER BY AWNEX. G.C. TO PROVIDE BLOCKING AS REQUIRED (SEPARATE PERMIT)
- 3/4" "V" REVEAL IN EIFS TO BE ALIGN
- REAR DOOR. REFER TO DOOR SCHEDULE.
- EXTERIOR RAILING.
- METAL DRIVE THRU CANOPY STRUCTURE
- BOLLARD
- ROOF DECK LINE
- NOZZLE FOR OVERFLOW DRAIN FROM MAIN ROOF. LOCATE AS INDICATED ON 2 / A-202. SEE PLUMBING PLANS FOR MORE INFORMATION.
- CONNECT INTERNAL ROOF DRAIN TO STORM SYSTEM. REFER TO PLUMBING FOR ROOF DRAIN SIZE AND TO CIVIL DRAWINGS FOR CONTINUATION.
- STANDING SEAM METAL ROOF.
- ROOF ACCESS LADDER.

PRODUCT APPROVAL SPECS

EIFS SYSTEM
 DRYVIT OUTSULATION PLUS DM SYSTEM
 FL PRODUCT APPROVAL = FL 2030-R6 (2030-11)
 MIAMI-DADE NOA = 12.0703.03

GENERAL NOTES

ELEVATION DESIGN AND COLORS MAY NOT BE MODIFIED WITHOUT APPROVAL FROM CITY OF PORT SAINT LUCIE

NO MECHANICAL EQUIPMENT SHOULD BE VISIBLE FROM ABOVE THE HEIGHT OF THE PARAPET

NO.	DATE	REMARKS
06-10-26		
05-05-26		
03-13-26		

POLLO TROPICAL RESTAURANT

3201 SW PORT ST. LUCIE BLVD.
 PORT ST. LUCIE,
 ST. LUCIE COUNTY, FL.

PROJECT NO: 1942
 DATE: 01/28/2026

A202
 PROPOSED EXTERIOR ELEVATIONS

SITE PLAN: P26-024
 SPECIAL EXCEPTION: P26-025
 PSLUSD: # 11-219-00
 CHECKED: EC. DRAWN: LV.

COPYRIGHT © 2026 CKE GROUP, INC. ALL RIGHTS RESERVED. THESE DOCUMENTS TO BE ORIGINAL. USE FOR PURPOSE FOR WHICH THEY WERE PREPARED. REPRODUCTION, CHANGES OR ASSIGNMENTS ARE PROHIBITED.