

Veranda Plat 9 – Veranda Gardens East Phase 3

FINAL SUBDIVISION PLAT APPLICATION
WITH CONSTRUCTION PLANS
(P20-205)

City Council Meeting
Laura H. Dodd, Planner II

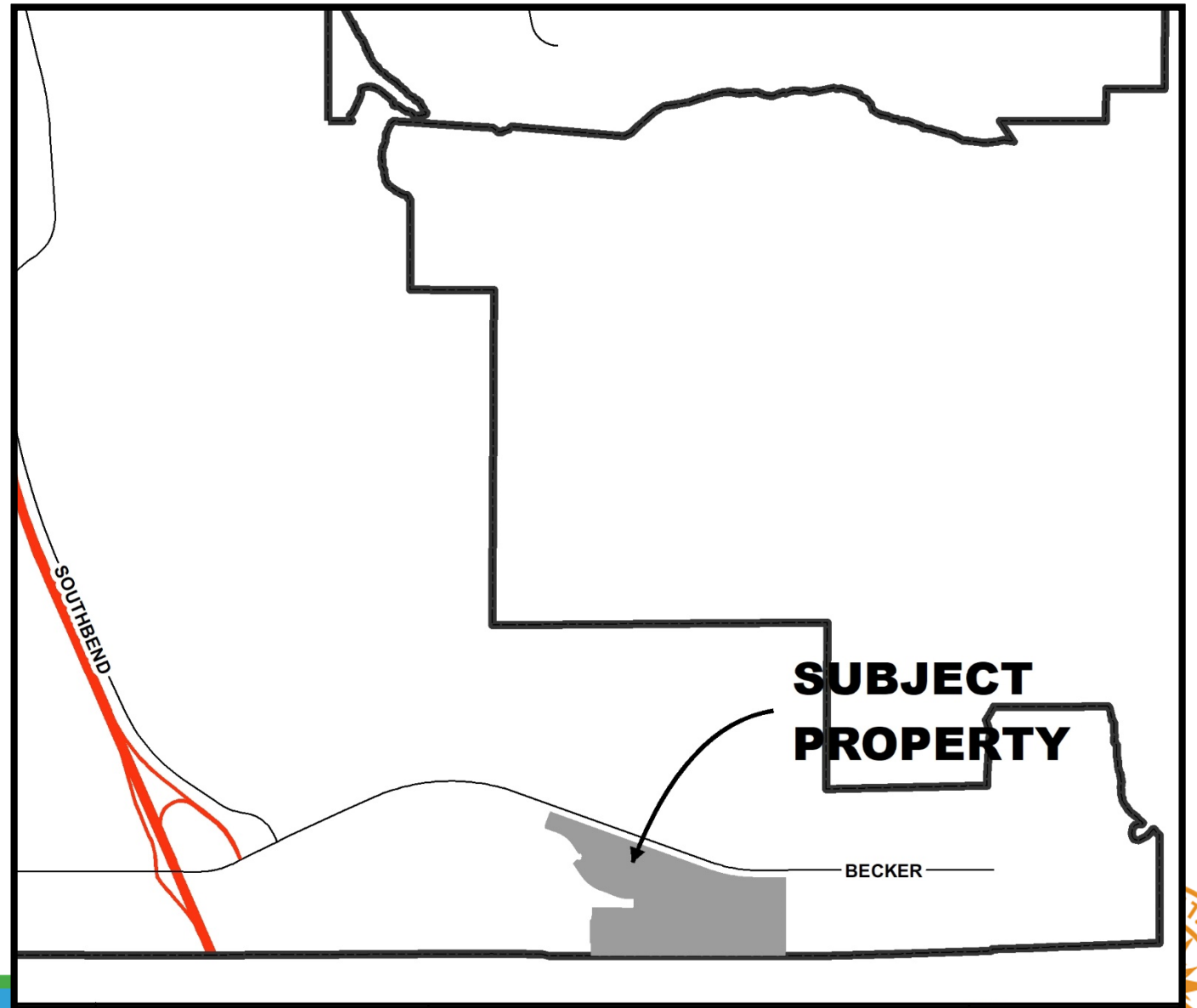


Requested Application:

This 114-acre final subdivision plat is proposed to create:

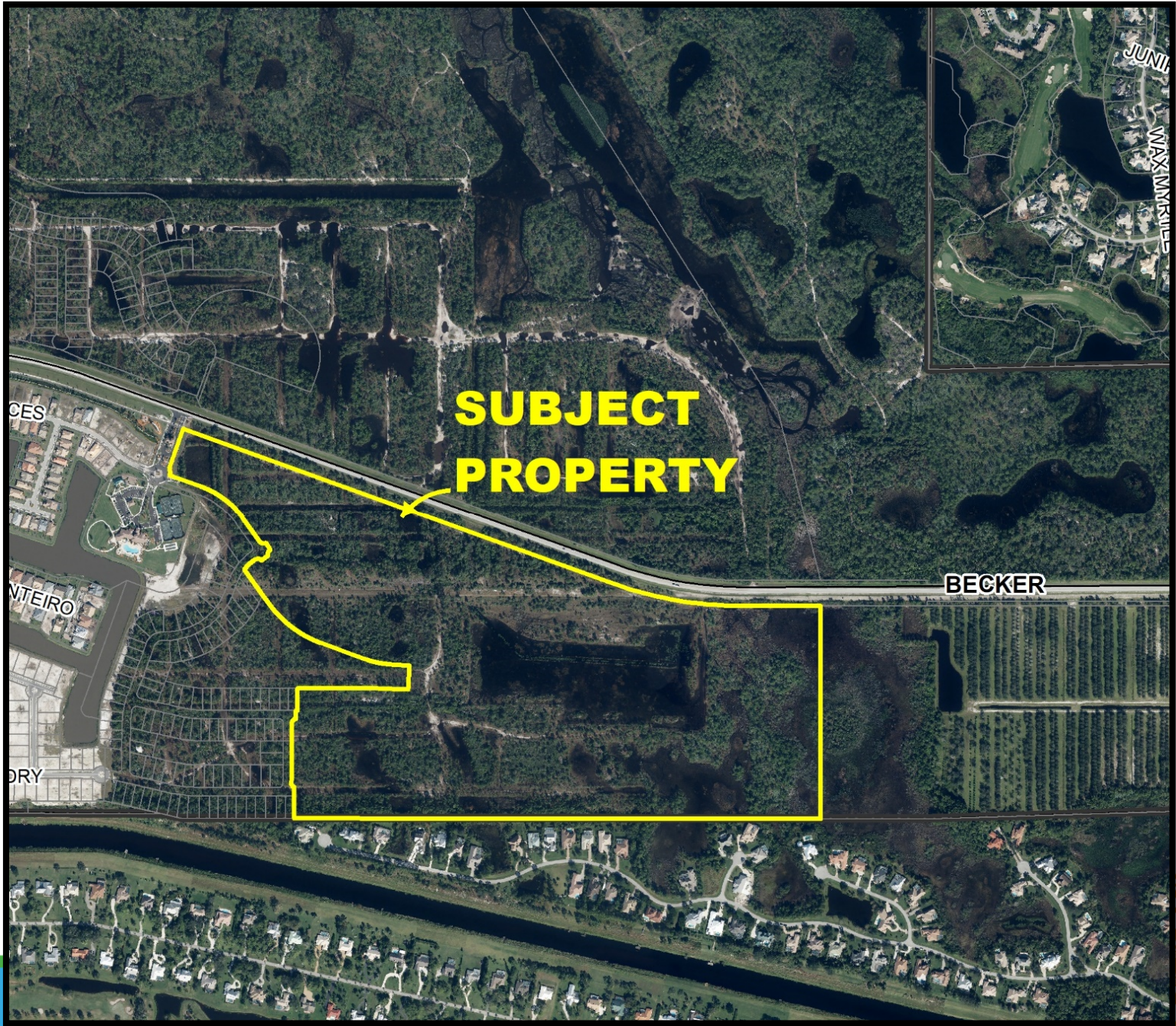
- of 106 single-family homes
- one (1) open space tract
- one (1) lakes stormwater management tract
- Approximately 83 acres (Tract A) for the remaining fourth phase of Veranda Gardens including a wetland preserve and conservation easement,
- Approximately 4.8 acres of native habitat preservation area.
- This plat also includes the private road rights-of-way to provide access for the residential lots.

Location



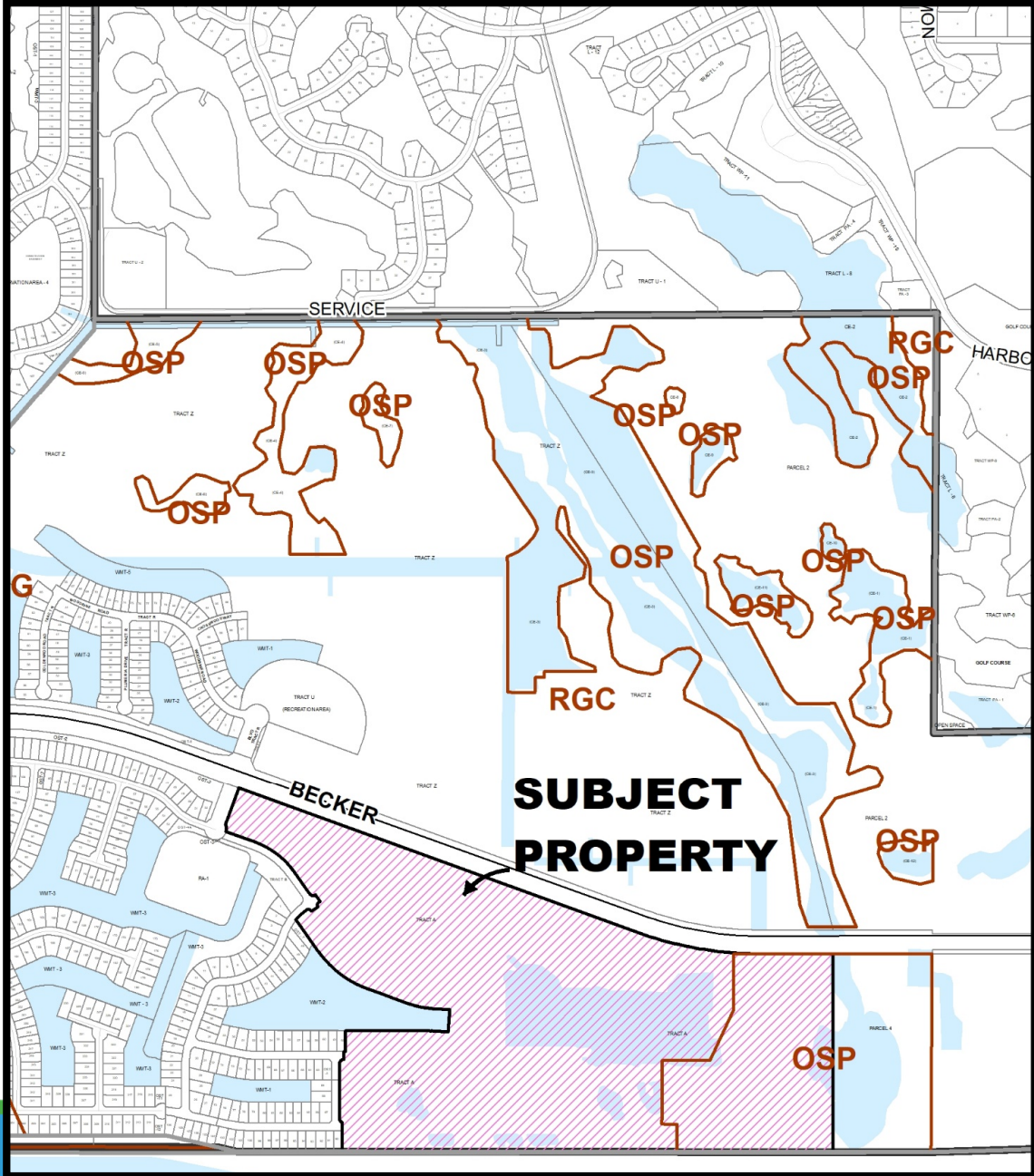
Aerial

Direction	Future Land Use	Zoning	Existing Use
N	RGC ¹	PUD ²	Veranda PUD
S	Martin County	Martin County	Crane Watch Club; Martin County; Canal
E	RGC ¹	PUD ²	Veranda PUD
W	RGC ¹	PUD ²	Veranda PUD



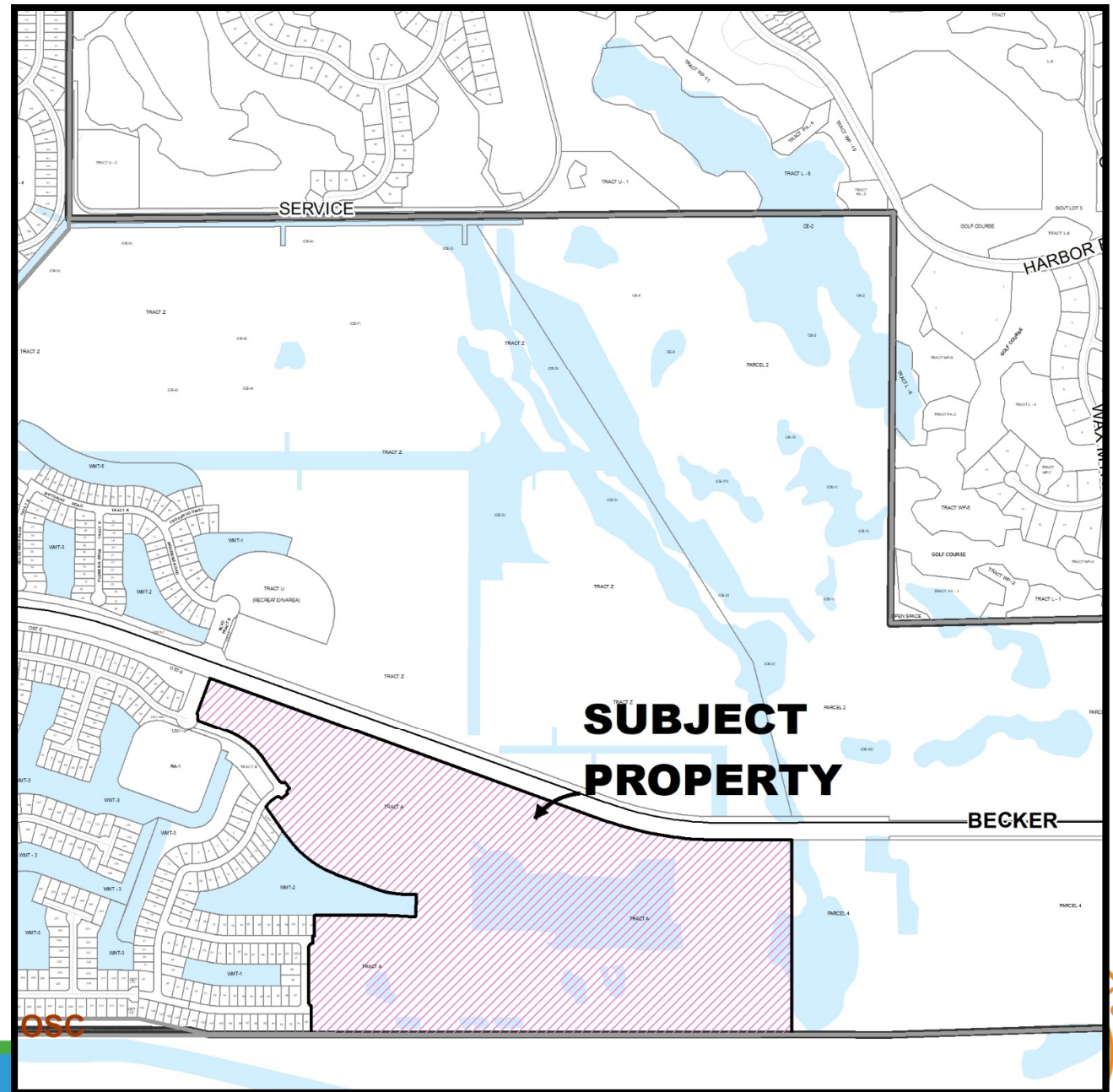
Land Use

Direction	Future Land Use	Zoning	Existing Use
N	RGC ¹	PUD ²	Veranda PUD
S	Martin County	Martin County	Crane Watch Club; Martin County; Canal
E	RGC ¹	PUD ²	Veranda PUD
W	RGC ¹	PUD ²	Veranda PUD



Zoning

Direction	Future Land Use	Zoning	Existing Use
N	RGC ¹	PUD ²	Veranda PUD
S	Martin County	Martin County	Crane Watch Club; Martin County; Canal
E	RGC ¹	PUD ²	Veranda PUD
W	RGC ¹	PUD ²	Veranda PUD



Concurrency Review

The project has been reviewed for compliance with the Veranda (Planned Unit Development) PUD Development Agreement regarding provision of adequate public facilities and density.



Recommendation

Site Plan Review Committee recommended approval at their meeting of November 25, 2020.

