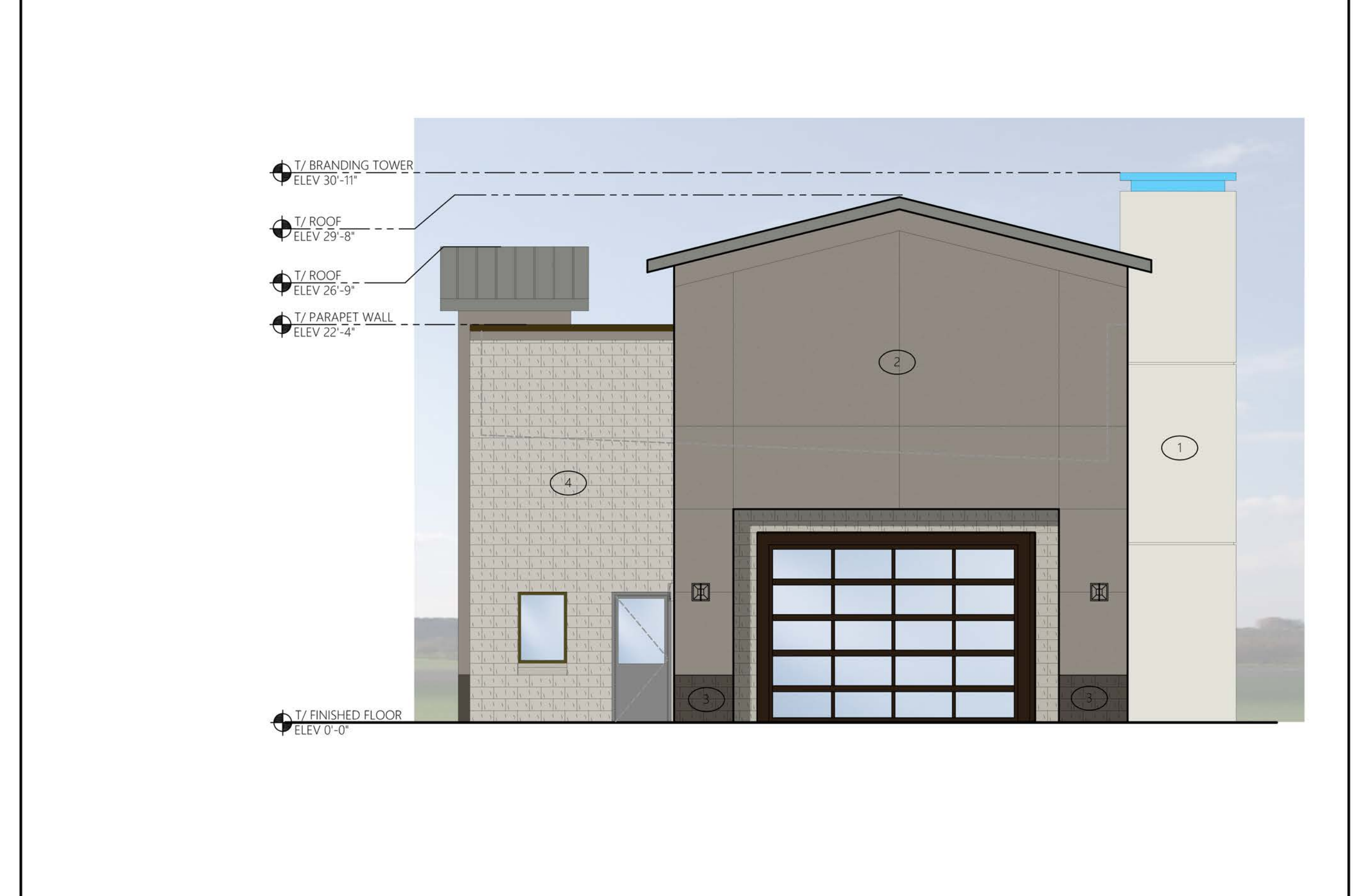




1 NORTH ELEVATION 3/16" = 1'-0"



2 EAST 3/16" = 1'-0"



3 WEST 3/16" = 1'-0"



4 SOUTH ELEVATION 3/16" = 1'-0"

EXTERIOR FINISH & COLOR PERCENTAGE OF EAST ELEV.

NO.	AREA	COLOR	%
	GLAZING		13%
1	TOWER	BY MANUF. MATCH SW 6169 SEDATE GRAY	13%
2	STUCCO	MATCH SW COLOR #7018 DOVETAIL	30%
3	DARK CMU	MATCH SW COLOR #7020, BLACK FOX	2%
4	SPLIT FACE CMU	MATCH SW COLOR # 7016, MINDFUL GRAY	40.4%
	METAL ROOF	SLATE GRAY	
	ALUM. COPING	DARK BRONZE	
	STOTEFRONT	CLEAR ANODIZED	

EXTERIOR FINISH & COLOR PERCENTAGE OF NORTH ELEV.

NO.	AREA	COLOR	%
	GLAZING		4%
2	STUCCO	MATCH SW COLOR #7018 DOVETAIL	31%
3	DARK CMU	MATCH SW COLOR #7020, BLACK FOX	2.2%
4	SPLIT FACE CMU	MATCH SW COLOR # 7016, MINDFUL GRAY	58%

EXTERIOR FINISH & COLOR PERCENTAGE OF EAST ELEV.

NO.	AREA	COLOR	%
	GLAZING		12%
1	TOWER	BY MANUF. MATCH SW 6169 SEDATE GRAY	17.3%
2	STUCCO	MATCH SW COLOR #7018 DOVETAIL	36%
3	DARK CMU	MATCH SW COLOR #7020, BLACK FOX	1.6%
4	SPLIT FACE CMU	MATCH SW COLOR # 7016, MINDFUL GRAY	27%

EXTERIOR FINISH & COLOR PERCENTAGE OF WEST ELEV.

NO.	AREA	COLOR	%
	GLAZING		16%
2	STUCCO	MATCH SW COLOR #7018 DOVETAIL	50%
3	DARK CMU	MATCH SW COLOR #7020, BLACK FOX	2%
4	SPLIT FACE CMU	MATCH SW COLOR # 7016, MINDFUL GRAY	27%

EXTERIOR FINISH & COLOR PERCENTAGE OF SOUTH ELEV.

NO.	AREA	COLOR	%
	GLAZING		21%
1	TOWER	BY MANUF. MATCH SW 6169 SEDATE GRAY	21%
2	STUCCO	MATCH SW COLOR #7018 DOVETAIL	21%
3	DARK CMU	MATCH SW COLOR #7020, BLACK FOX	1.3%
4	SPLIT FACE CMU	MATCH SW COLOR # 7016, MINDFUL GRAY	33.1%

ARCHITECT OF RECORD:
RALPH M. COLEMAN
FLORIDA REGISTERED
ARCHITECT
201 RIVERPLACE, SUITE 401
GREENVILLE, SC 29601
PHONE: 864-451-5288



COR3 Design, LLC
Commercial, Office, Retail, Restaurant, Real Estate Development
201 RiverPlace
Suite 401
Greenville, SC 29601
Phone: 864.451.5288
Fax: 864.990.3085
www.cor3design.com

Consultants:
STRUCTURAL
Mark A. Hudson, PE
1350 C Cleveland Street
Greenville, SC 29607
864.235.3580
PLUMBING
Michael S. Dennis P.E.
870 Cleveland St, STE 1D
Greenville, SC 29601
864.271.6535
MECHANICAL
Michael S. Dennis P.E.
870 Cleveland St, STE 1D
Greenville, SC 29601
864.271.6535
ELECTRICAL
Hugh P. Burn, PE
912 S. Pine Street
Spartanburg, SC 29302
864.383.2795

Project Title:
**TAKE 5 CW PORT ST.
LUCIE, FL**
1801 SW GATLIN BLVD. PORT
ST. LUCIE, FL 34953



Revisions:
10.12.2022 Issue for Permit

THIS DRAWING IS THE PROPERTY OF COR3 DESIGN, LLC, AND IS COPY RIGHT PROTECTED. IT IS NOT TO BE REPRODUCED OR COPIED IN WHOLE OR IN PART. IT IS ONLY TO BE USED FOR THE PROJECT AND SITE SPECIFICALLY IDENTIFIED HEREIN AND IS NOT TO BE USED FOR ANY OTHER PROJECT. IT IS TO BE RETURNED UPON REQUEST.

Project Number:
22022
Phase:
CD
Date:
10.12.2022
Drawn By:
-
Checked By:
-
Sheet Number:
A200
Sheet Title:
ELEVATIONS