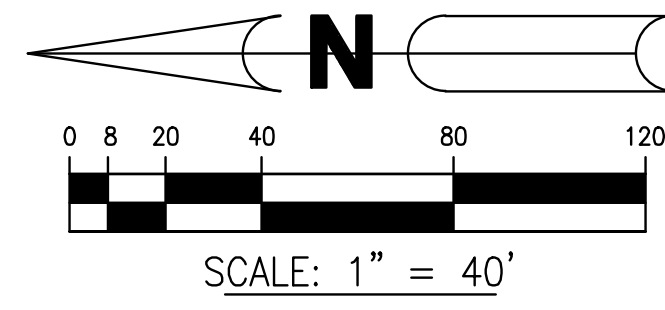


VERANO SOUTH - POD E - PLAT NO. 1

A PORTION OF SECTION 33, TOWNSHIP 36 SOUTH, RANGE 39 EAST AND A PORTION OF SECTION 4, TOWNSHIP 37 SOUTH, RANGE 39 EAST, ST. LUCIE COUNTY, FLORIDA, LYING WITHIN THE CITY OF PORT ST. LUCIE, FLORIDA

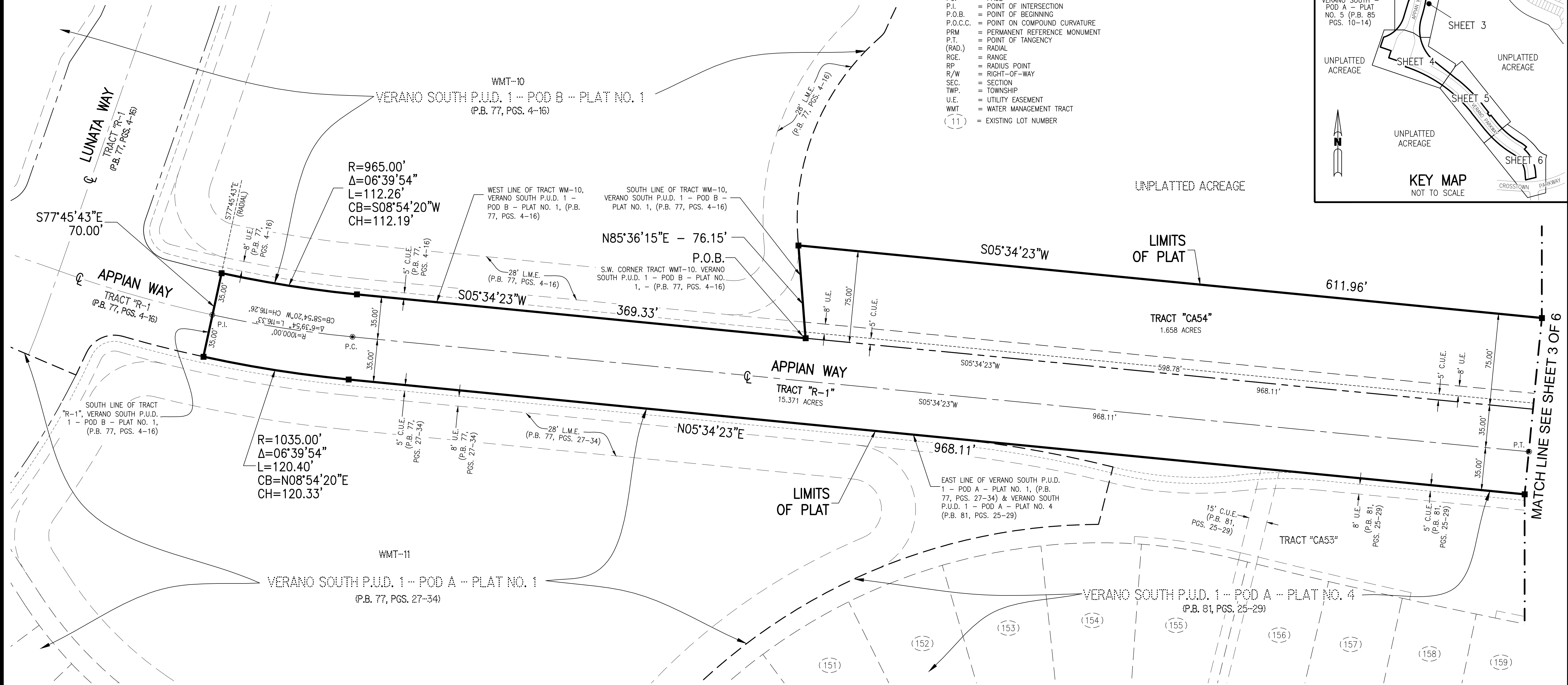
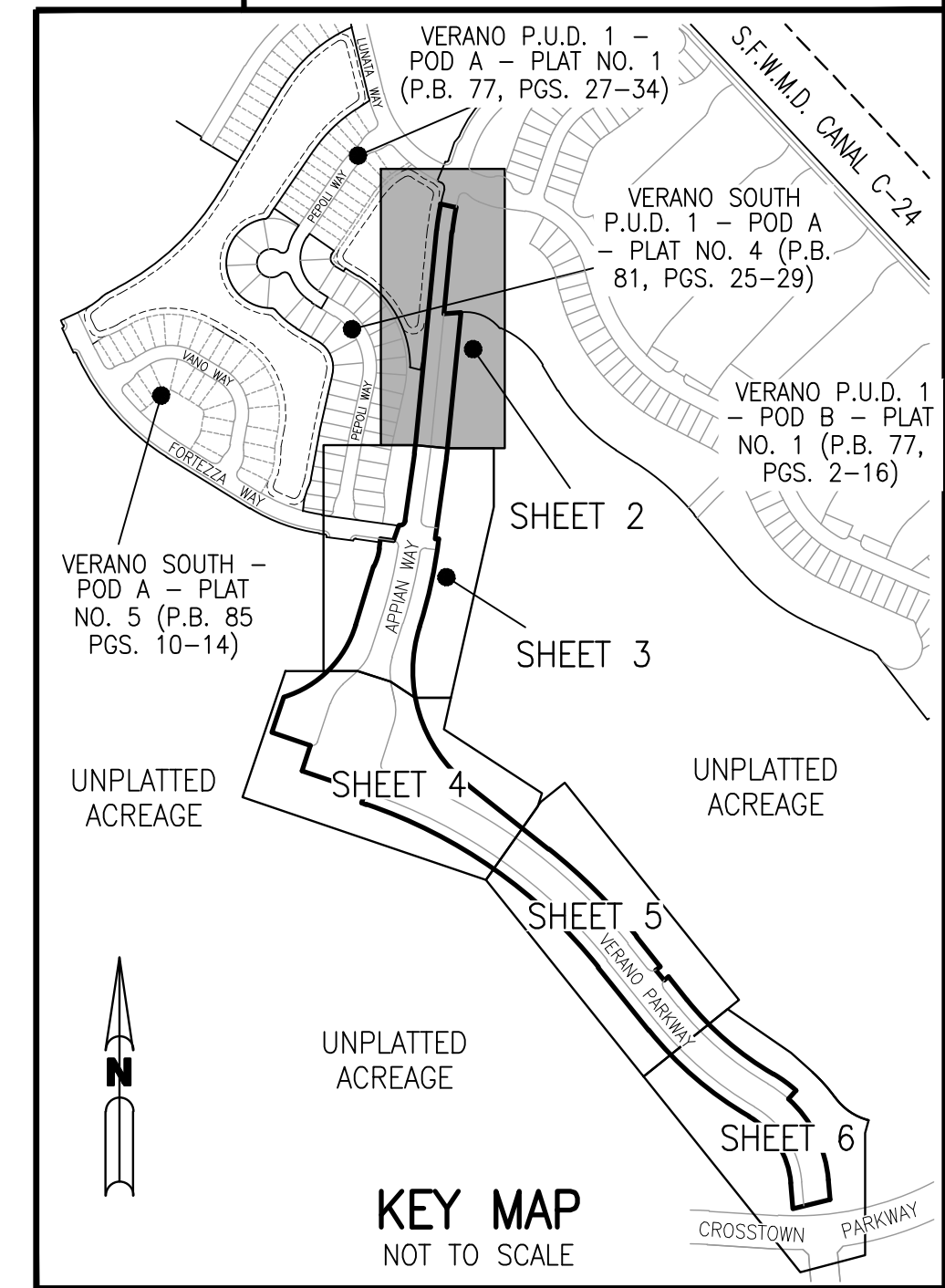
SHEET 2 OF 6

THIS INSTRUMENT PREPARED BY
 GARRY C. VANPOOL, P.S.M. 6575, STATE OF FLORIDA
 ARCADIS U.S. INC. LB 7062
 ENGINEERS PLANNERS SURVEYORS
 1500 GATEWAY BOULEVARD, SUITE 200
 BOYNTON BEACH, FLORIDA 33426



- LEGEND:**
- = SET PERMANENT REFERENCE MONUMENT PRM LB 7062
 - = FOUND PERMANENT REFERENCE MONUMENT PRM LB 7062
 - = PERMANENT CONTROL POINT LB 7062
 - Δ = DELTA ANGLE
 - L = ARC LENGTH
 - R = RADIUS
 - ℄ = CENTERLINE
 - CB = CHORD BEARING
 - CH = CHORD DISTANCE
 - C.U.E. = CITY UTILITY EASEMENT
 - D.E. = DRAINAGE EASEMENT
 - LB = LICENSED SURVEY BUSINESS
 - L.M.E. = LAKE MAINTENANCE EASEMENT
 - (N.R.) = NON RADIAL
 - O.R.B. = OFFICIAL RECORDS BOOK
 - P.B. = PLAT BOOK
 - P.C. = POINT OF CURVATURE
 - PG. = PAGE
 - P.I. = POINT OF INTERSECTION
 - P.O.B. = POINT OF BEGINNING
 - P.O.C.C. = POINT ON COMPOUND CURVATURE
 - PRM = PERMANENT REFERENCE MONUMENT
 - P.T. = POINT OF TANGENCY
 - (RAD.) = RADIAL
 - RGE. = RANGE
 - RP = RADIUS POINT
 - R/W = RIGHT-OF-WAY
 - SEC. = SECTION
 - TWP. = TOWNSHIP
 - U.E. = UTILITY EASEMENT
 - WMT = WATER MANAGEMENT TRACT
 - (11) = EXISTING LOT NUMBER

PLAT BOOK	
PAGE	
FILE NO.	
DATE	
TIME	



VERANO SOUTH - POD E - PLAT NO. 1

A PORTION OF SECTION 33, TOWNSHIP 36 SOUTH, RANGE 39 EAST AND A PORTION OF SECTION 4, TOWNSHIP 37 SOUTH, RANGE 39 EAST, ST.
LUCIE COUNTY, FLORIDA, LYING WITHIN THE CITY OF PORT ST. LUCIE, FLORIDA

SHEET 3 OF 6

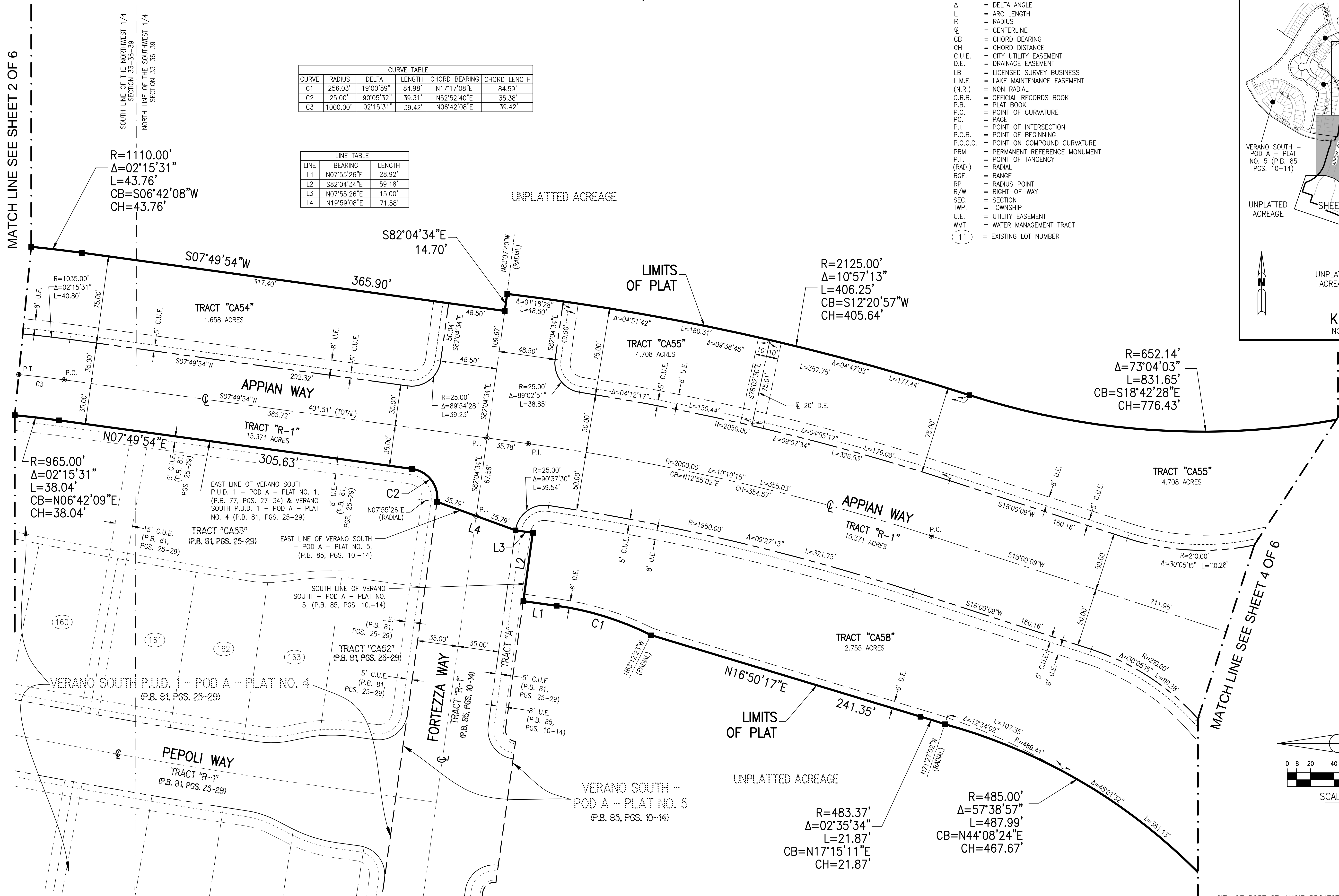
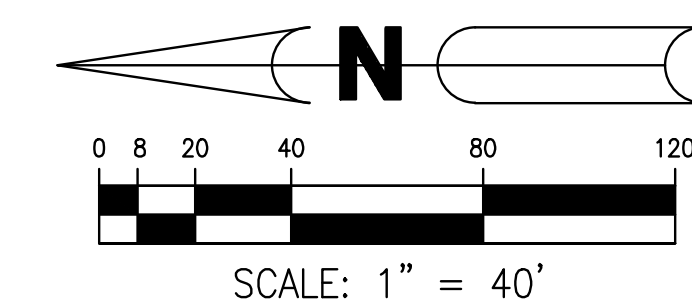
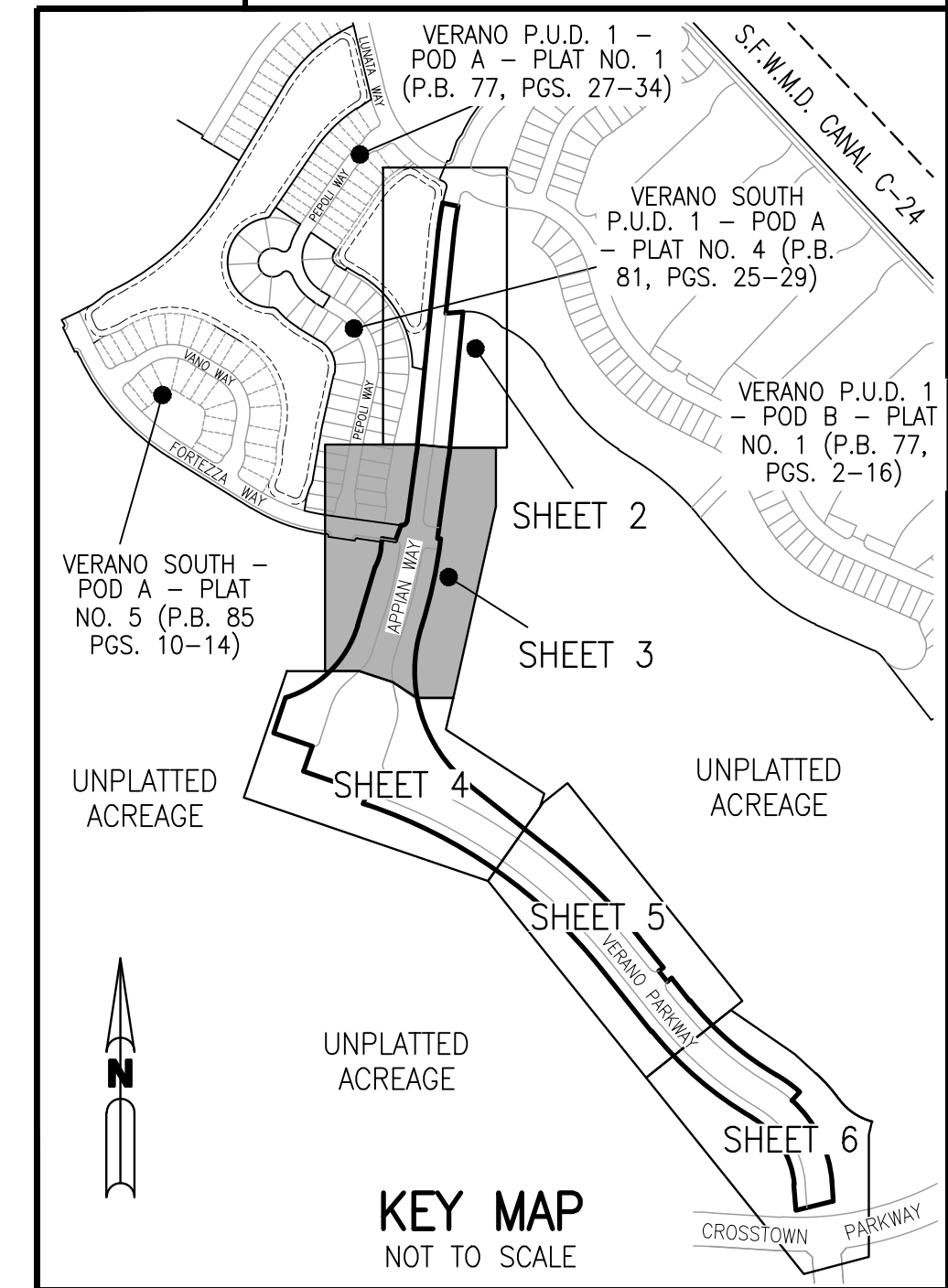
THIS INSTRUMENT PREPARED BY
GARRY C. VANPOOL, P.S.M. 6575, STATE OF FLORIDA
ARCADIS U.S. INC. LB 7062
ENGINEERS PLANNERS SURVEYORS
1500 GATEWAY BOULEVARD, SUITE 200
BOYNTON BEACH, FLORIDA 33426

LEGEND:

- = SET PERMANENT REFERENCE MONUMENT PRM LB 7062
- = FOUND PERMANENT REFERENCE MONUMENT PRM LB 7062
- = PERMANENT CONTROL POINT LB 7062
- Δ = DELTA ANGLE
- L = ARC LENGTH
- R = RADIUS
- ⊙ = CENTERLINE
- CB = CHORD BEARING
- CH = CHORD DISTANCE
- C.U.E. = CITY UTILITY EASEMENT
- D.E. = DRAINAGE EASEMENT
- LB = LICENSED SURVEY BUSINESS
- L.M.E. = LAKE MAINTENANCE EASEMENT
- (N.R.) = NON RADIAL
- O.R.B. = OFFICIAL RECORDS BOOK
- P.B. = PLAT BOOK
- P.C. = POINT OF CURVATURE
- P.G. = PAGE
- P.I. = POINT OF INTERSECTION
- P.O.B. = POINT OF BEGINNING
- P.O.C.C. = POINT ON COMPOUND CURVATURE
- PRM = PERMANENT REFERENCE MONUMENT
- P.T. = POINT OF TANGENCY
- (RAD.) = RADIAL
- RGE. = RANGE
- RP = RADIUS POINT
- R/W = RIGHT-OF-WAY
- SEC. = SECTION
- TWP. = TOWNSHIP
- U.E. = UTILITY EASEMENT
- WMT = WATER MANAGEMENT TRACT
- (11) = EXISTING LOT NUMBER

CURVE TABLE					
CURVE	RADIUS	DELTA	LENGTH	CHORD BEARING	CHORD LENGTH
C1	256.03'	19°00'59"	84.98'	N17°17'08"E	84.59'
C2	25.00'	90°05'32"	39.31'	N52°52'40"E	35.38'
C3	1000.00'	02°15'31"	39.42'	N06°42'08"E	39.42'

LINE TABLE		
LINE	BEARING	LENGTH
L1	N07°55'26"E	28.92'
L2	S82°04'34"E	59.18'
L3	N07°55'26"E	15.00'
L4	N19°59'08"E	71.58'



MATCH LINE SEE SHEET 4 OF 6

MATCH LINE SEE SHEET 2 OF 6

SOUTH LINE OF THE NORTHWEST 1/4 SECTION 33-36-39
NORTH LINE OF THE SOUTHWEST 1/4 SECTION 33-36-39

R=1110.00'
Δ=02°15'31"
L=43.76'
CB=S06°42'08"W
CH=43.76'

R=2125.00'
Δ=10°57'13"
L=406.25'
CB=S12°20'57"W
CH=405.64'

R=652.14'
Δ=73°04'03"
L=831.65'
CB=S18°42'28"E
CH=776.43'

R=483.37'
Δ=02°35'34"
L=21.87'
CB=N17°15'11"E
CH=21.87'

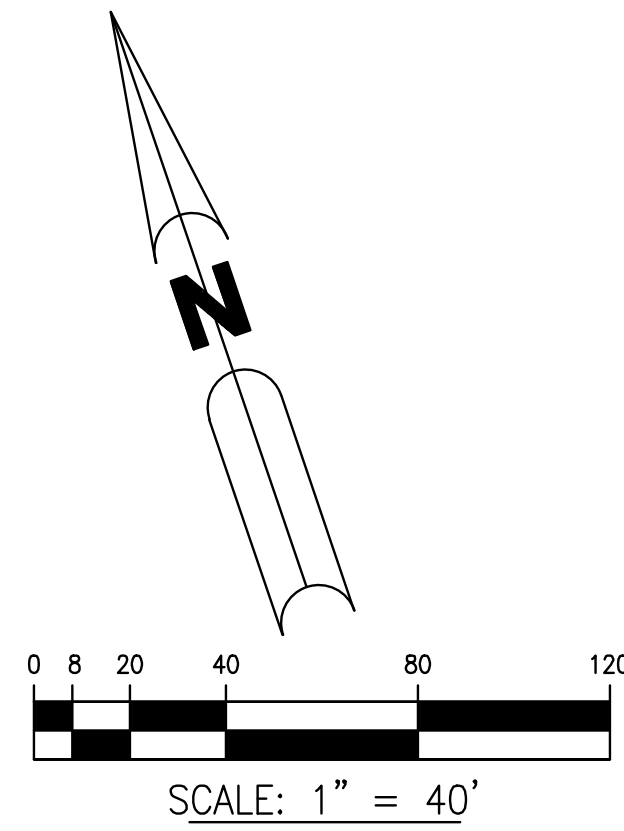
R=485.00'
Δ=57°38'57"
L=487.99'
CB=N44°08'24"E
CH=467.67'

VERANO SOUTH - POD E - PLAT NO. 1

A PORTION OF SECTION 33, TOWNSHIP 36 SOUTH, RANGE 39 EAST AND A PORTION OF SECTION 4, TOWNSHIP 37 SOUTH, RANGE 39 EAST, ST.
LUCIE COUNTY, FLORIDA, LYING WITHIN THE CITY OF PORT ST. LUCIE, FLORIDA

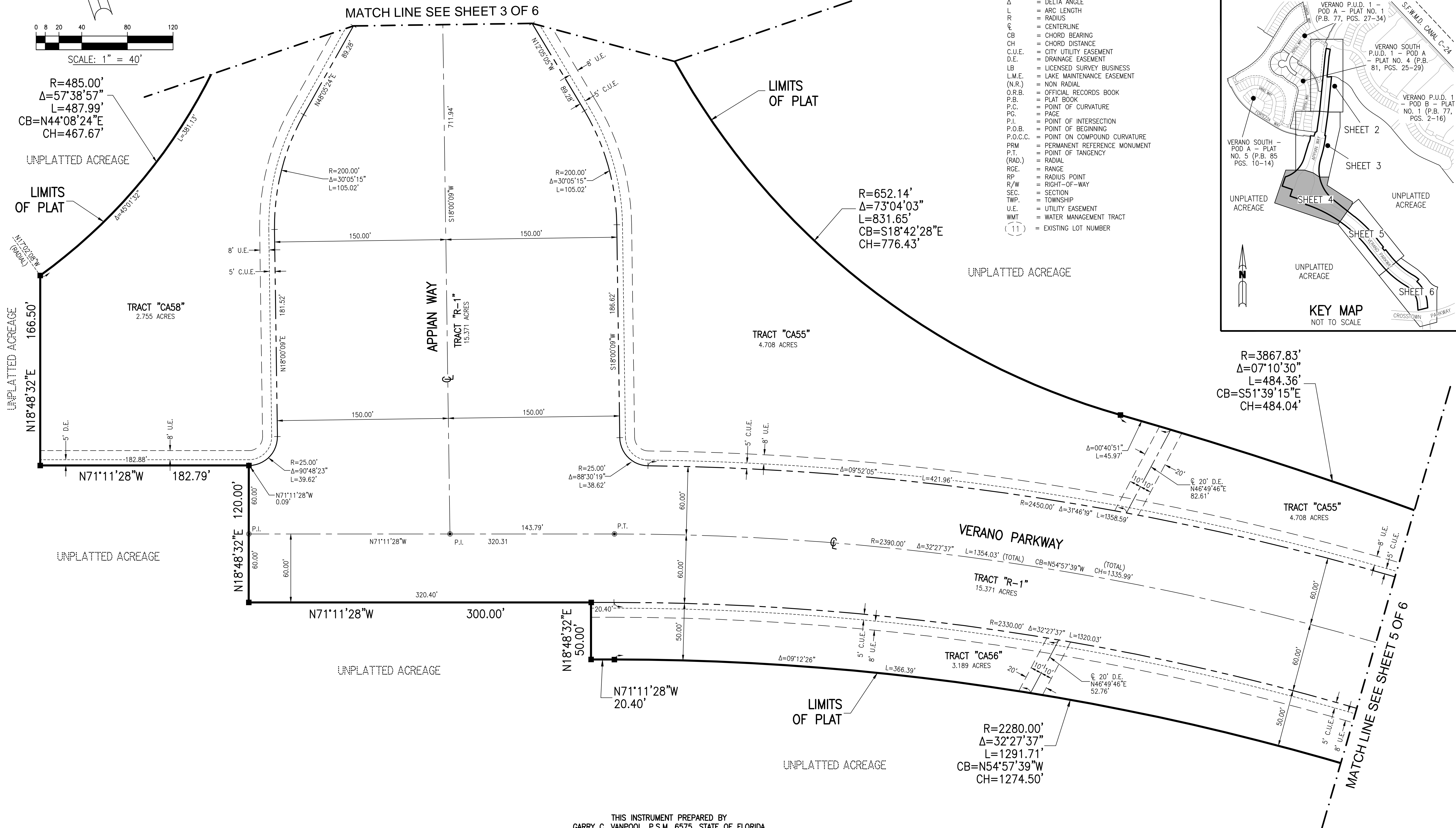
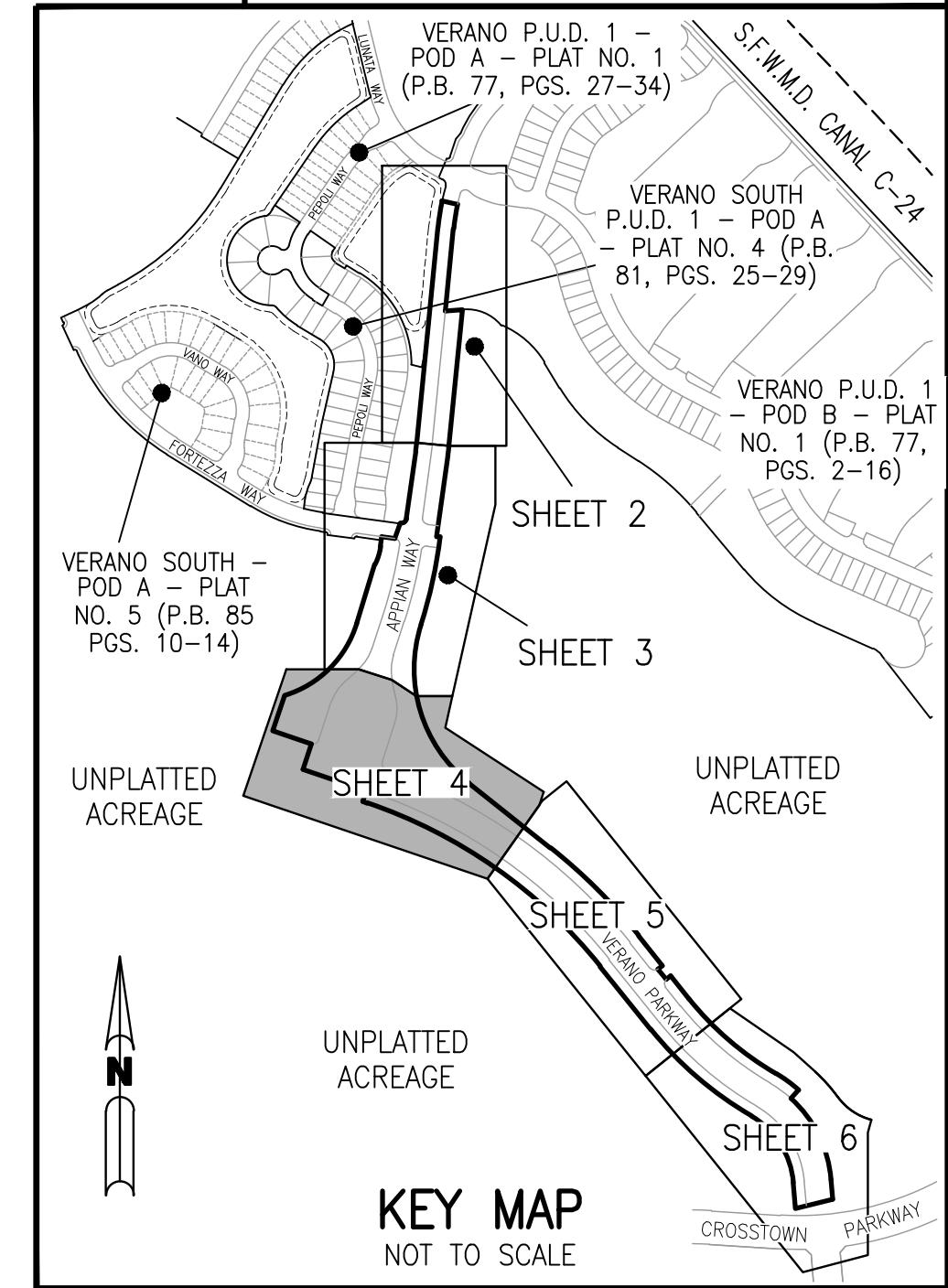
SHEET 4 OF 6

PLAT BOOK	
PAGE	
FILE NO.	
DATE	
TIME	



LEGEND:

- = SET PERMANENT REFERENCE MONUMENT PRM LB 7062
- = FOUND PERMANENT REFERENCE MONUMENT PRM LB 7062
- = PERMANENT CONTROL POINT LB 7062
- Δ = DELTA ANGLE
- L = ARC LENGTH
- R = RADIUS
- CL = CENTERLINE
- CB = CHORD BEARING
- CH = CHORD DISTANCE
- C.U.E. = CITY UTILITY EASEMENT
- D.E. = DRAINAGE EASEMENT
- LB = LICENSED SURVEY BUSINESS
- L.M.E. = LAKE MAINTENANCE EASEMENT
- (N.R.) = NON RADIAL
- O.R.B. = OFFICIAL RECORDS BOOK
- P.B. = PLAT BOOK
- P.C. = POINT OF CURVATURE
- PG. = PAGE
- P.I. = POINT OF INTERSECTION
- P.O.B. = POINT OF BEGINNING
- P.O.C.C. = POINT ON COMPOUND CURVATURE
- PRM = PERMANENT REFERENCE MONUMENT
- P.T. = POINT OF TANGENCY
- (RAD.) = RADIAL
- RGE. = RANGE
- RP = RADIUS POINT
- R/W = RIGHT-OF-WAY
- SEC. = SECTION
- TWP. = TOWNSHIP
- U.E. = UTILITY EASEMENT
- WMT = WATER MANAGEMENT TRACT
- (11) = EXISTING LOT NUMBER



THIS INSTRUMENT PREPARED BY
GARRY C. VANPOOL, P.S.M. 6575, STATE OF FLORIDA
ARCADIS U.S. INC. LB 7062
ENGINEERS PLANNERS SURVEYORS
1500 GATEWAY BOULEVARD, SUITE 200
BOYNTON BEACH, FLORIDA 33426

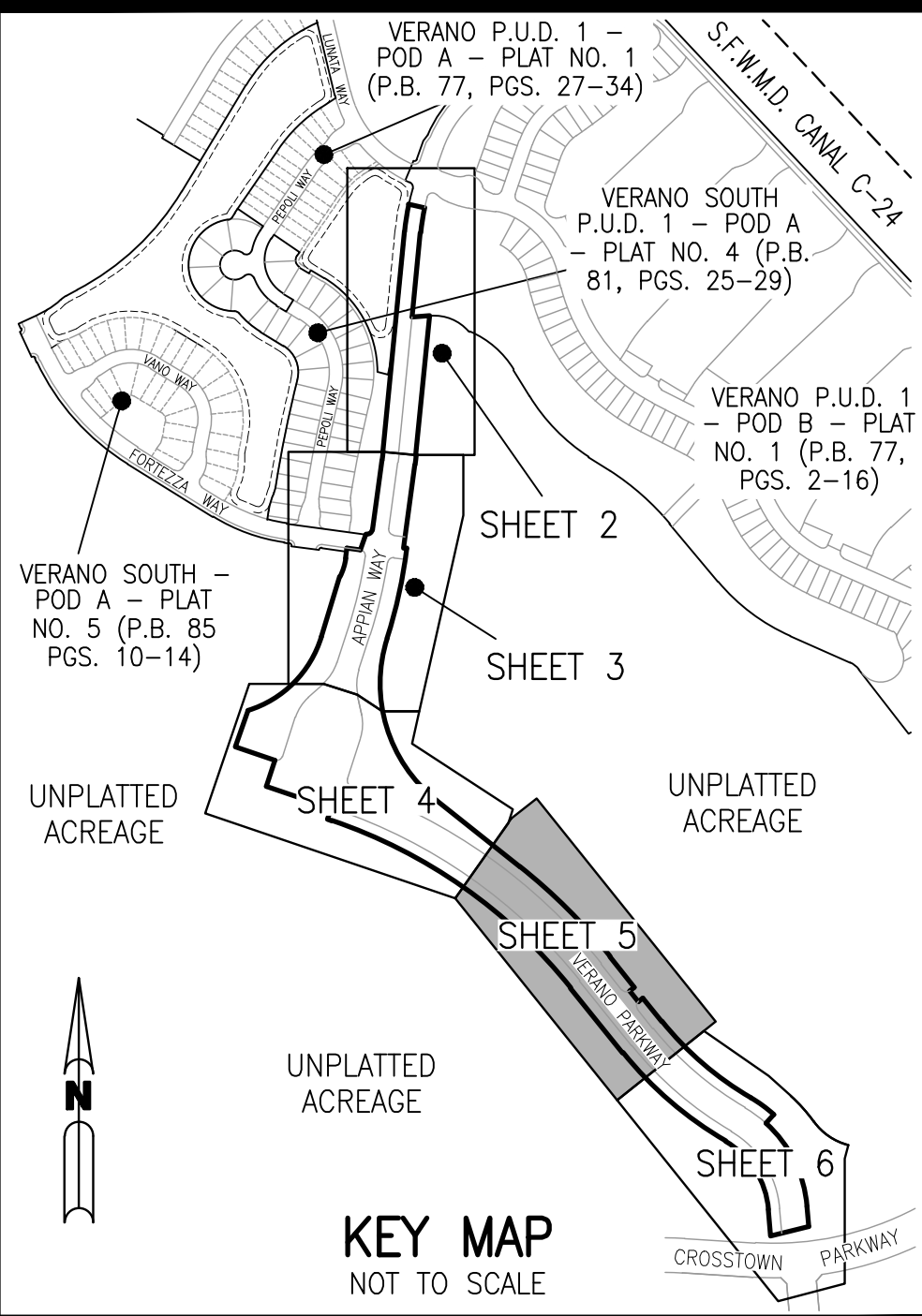
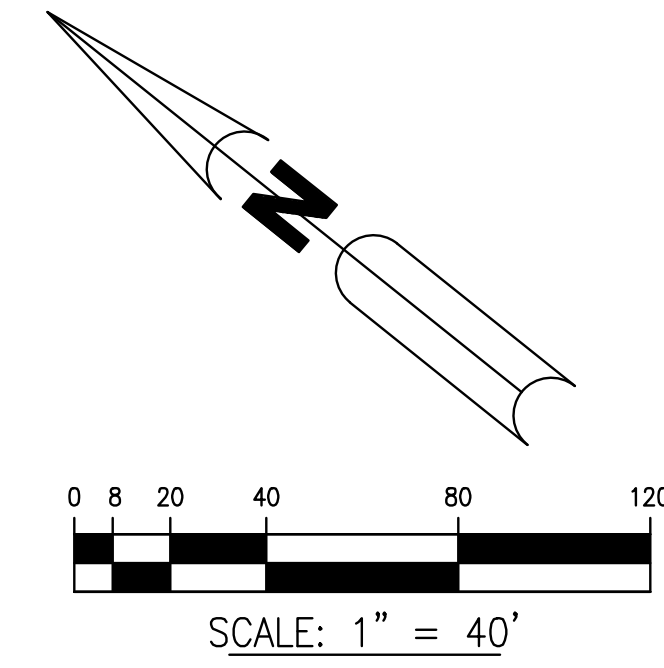
VERANO SOUTH - POD E - PLAT NO. 1

A PORTION OF SECTION 33, TOWNSHIP 36 SOUTH, RANGE 39 EAST AND A PORTION OF SECTION 4, TOWNSHIP 37 SOUTH, RANGE 39 EAST, ST. LUCIE COUNTY, FLORIDA, LYING WITHIN THE CITY OF PORT ST. LUCIE, FLORIDA

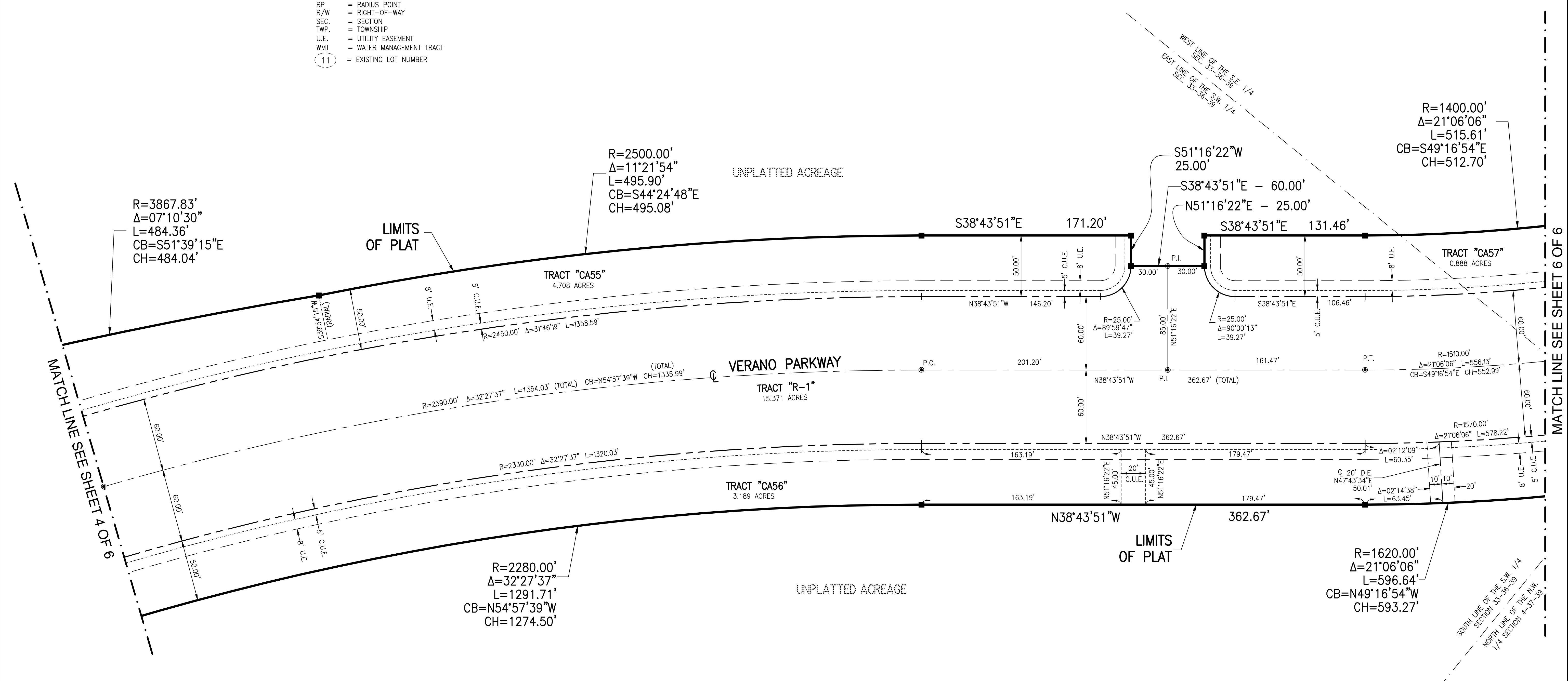
SHEET 5 OF 6

THIS INSTRUMENT PREPARED BY
 GARRY C. VANPOOL, P.S.M. 6575, STATE OF FLORIDA
 ARCADIS U.S. INC. LB 7062
 ENGINEERS PLANNERS SURVEYORS
 1500 GATEWAY BOULEVARD, SUITE 200
 BOYNTON BEACH, FLORIDA 33426

PLAT BOOK	
PAGE	
FILE NO.	
DATE	
TIME	



- LEGEND:**
- = SET PERMANENT REFERENCE MONUMENT PRM LB 7062
 - = FOUND PERMANENT REFERENCE MONUMENT PRM LB 7062
 - = PERMANENT CONTROL POINT LB 7062
 - Δ = DELTA ANGLE
 - L = ARC LENGTH
 - R = RADIUS
 - C = CENTERLINE
 - CB = CHORD BEARING
 - CH = CHORD DISTANCE
 - C.U.E. = CITY UTILITY EASEMENT
 - D.E. = DRAINAGE EASEMENT
 - LB = LICENSED SURVEY BUSINESS
 - L.M.E. = LAKE MAINTENANCE EASEMENT
 - (N.R.) = NON RADIAL
 - O.R.B. = OFFICIAL RECORDS BOOK
 - P.B. = PLAT BOOK
 - P.C. = POINT OF CURVATURE
 - P.G. = PAGE
 - P.I. = POINT OF INTERSECTION
 - P.O.B. = POINT OF BEGINNING
 - P.O.C.C. = POINT ON COMPOUND CURVATURE
 - PRM = PERMANENT REFERENCE MONUMENT
 - P.T. = POINT OF TANGENCY
 - (RAD.) = RADIAL
 - RGE. = RANGE
 - RP = RADIUS POINT
 - R/W = RIGHT-OF-WAY
 - SEC. = SECTION
 - TWP. = TOWNSHIP
 - U.E. = UTILITY EASEMENT
 - WMT = WATER MANAGEMENT TRACT
 - (11) = EXISTING LOT NUMBER



VERANO SOUTH - POD E - PLAT NO. 1

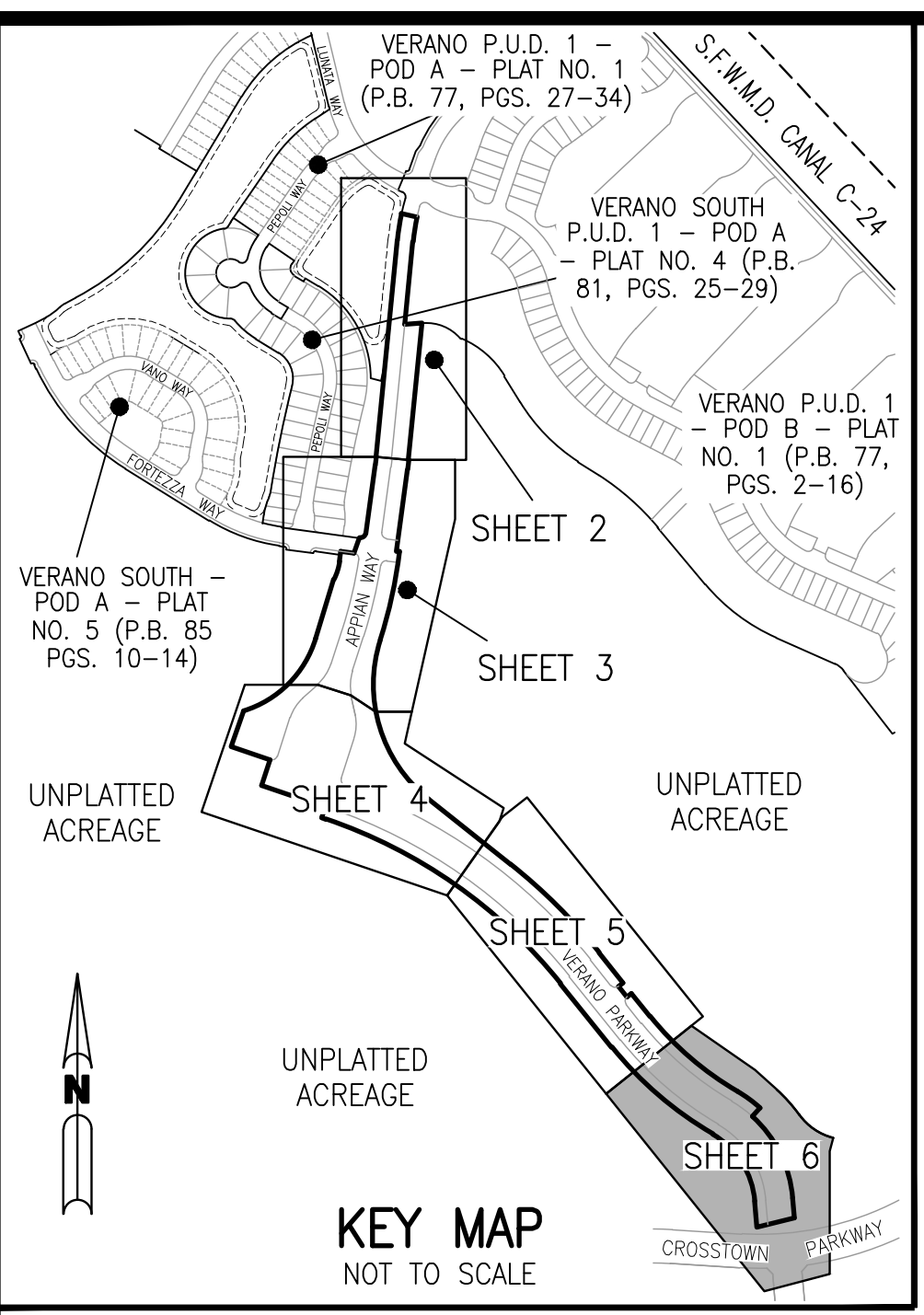
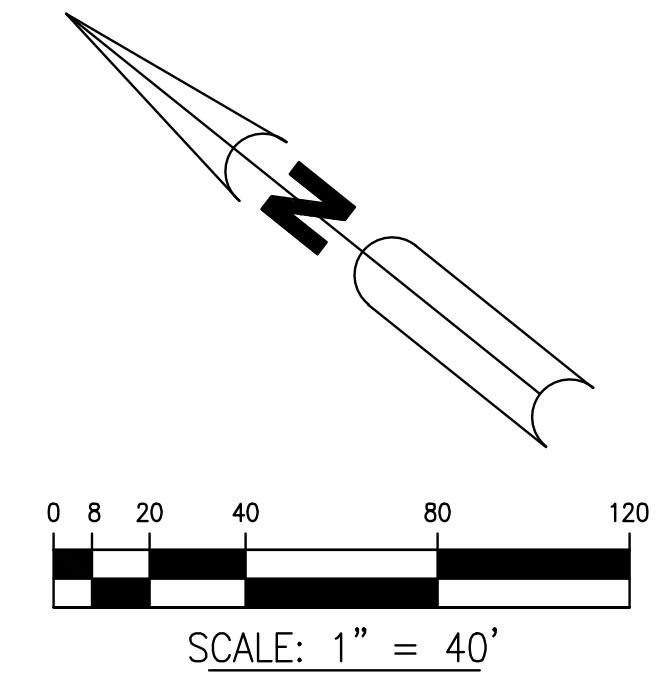
A PORTION OF SECTION 33, TOWNSHIP 36 SOUTH, RANGE 39 EAST AND A PORTION OF SECTION 4, TOWNSHIP 37 SOUTH, RANGE 39 EAST, ST.
LUCIE COUNTY, FLORIDA, LYING WITHIN THE CITY OF PORT ST. LUCIE, FLORIDA

SHEET 6 OF 6

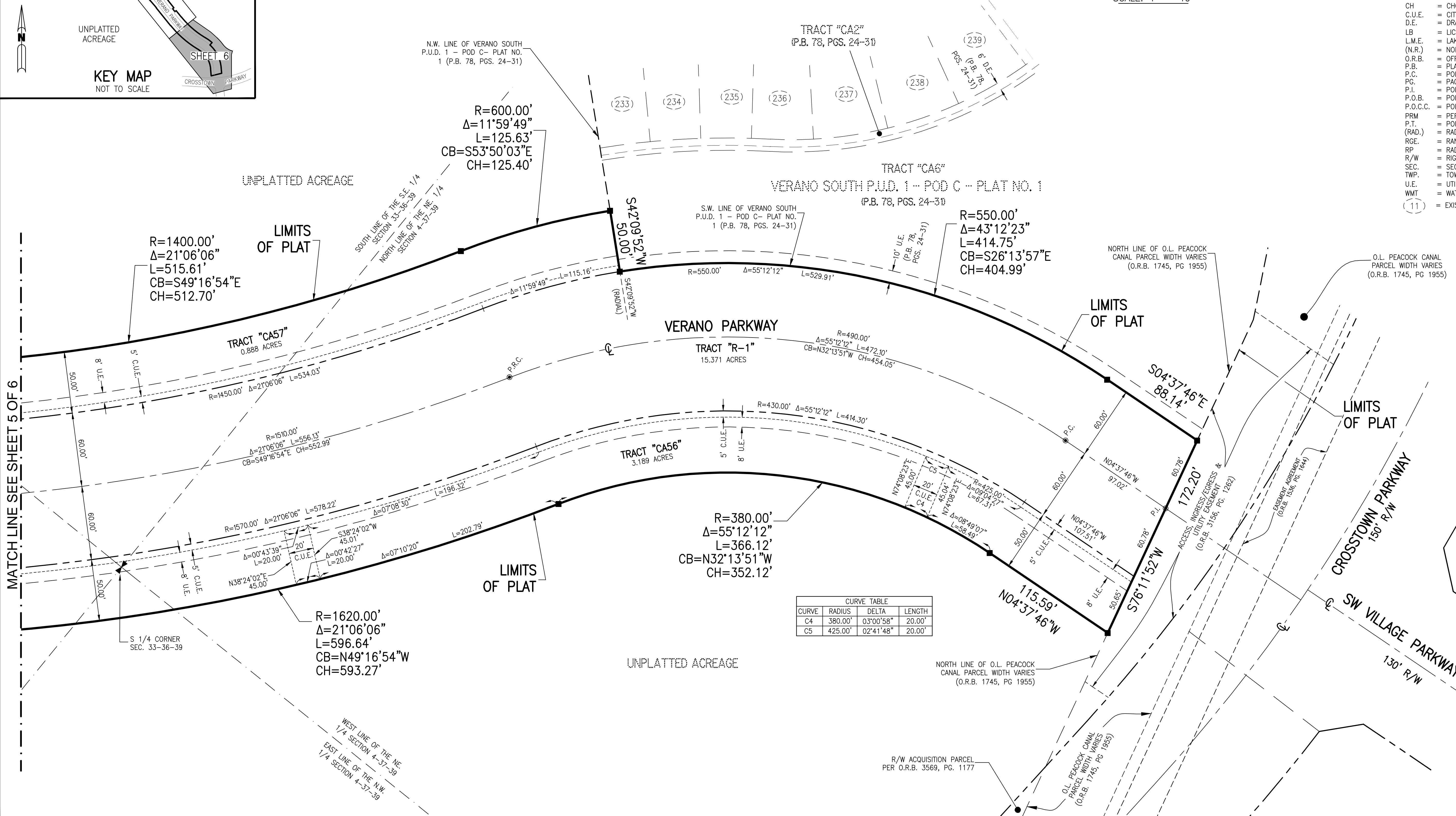
THIS INSTRUMENT PREPARED BY
GARRY C. VANPOOL, P.S.M. 6575, STATE OF FLORIDA
ARCADIS U.S. INC. LB 7062
ENGINEERS PLANNERS SURVEYORS
1500 GATEWAY BOULEVARD, SUITE 200
BOYNTON BEACH, FLORIDA 33426

PLAT BOOK
PAGE
FILE NO.
DATE
TIME

- LEGEND:**
- = SET PERMANENT REFERENCE MONUMENT PRM LB 7062
 - = FOUND PERMANENT REFERENCE MONUMENT PRM LB 7062
 - = PERMANENT CONTROL POINT LB 7062
 - Δ = DELTA ANGLE
 - L = ARC LENGTH
 - R = RADIUS
 - CL = CENTERLINE
 - CB = CHORD BEARING
 - CH = CHORD DISTANCE
 - C.U.E. = CITY UTILITY EASEMENT
 - D.E. = DRAINAGE EASEMENT
 - LB = LICENSED SURVEY BUSINESS
 - L.M.E. = LAKE MAINTENANCE EASEMENT
 - (N.R.) = NON RADIAL
 - O.R.B. = OFFICIAL RECORDS BOOK
 - P.B. = PLAT BOOK
 - P.C. = POINT OF CURVATURE
 - PG. = PAGE
 - P.I. = POINT OF INTERSECTION
 - P.O.B. = POINT OF BEGINNING
 - P.O.C.C. = POINT ON COMPOUND CURVATURE
 - PRM = PERMANENT REFERENCE MONUMENT
 - P.T. = POINT OF TANGENCY
 - (RAD.) = RADIAL
 - RGE. = RANGE
 - RP = RADIUS POINT
 - R/W = RIGHT-OF-WAY
 - SEC. = SECTION
 - TWP. = TOWNSHIP
 - U.E. = UTILITY EASEMENT
 - WMT = WATER MANAGEMENT TRACT
 - (11) = EXISTING LOT NUMBER



MATCH LINE SEE SHEET 5 OF 6



CURVE TABLE			
CURVE	RADIUS	DELTA	LENGTH
C4	380.00'	03°00'58"	20.00'
C5	425.00'	02°41'48"	20.00'