



Landscape Architects
Land Planners
Environmental Consultants
1934 Commerce Lane
Suite 1
Jupiter, Florida 33458
561.747.6336 · Fax 747.1377
www.cottleurhearing.com
Lic# LC-C000239

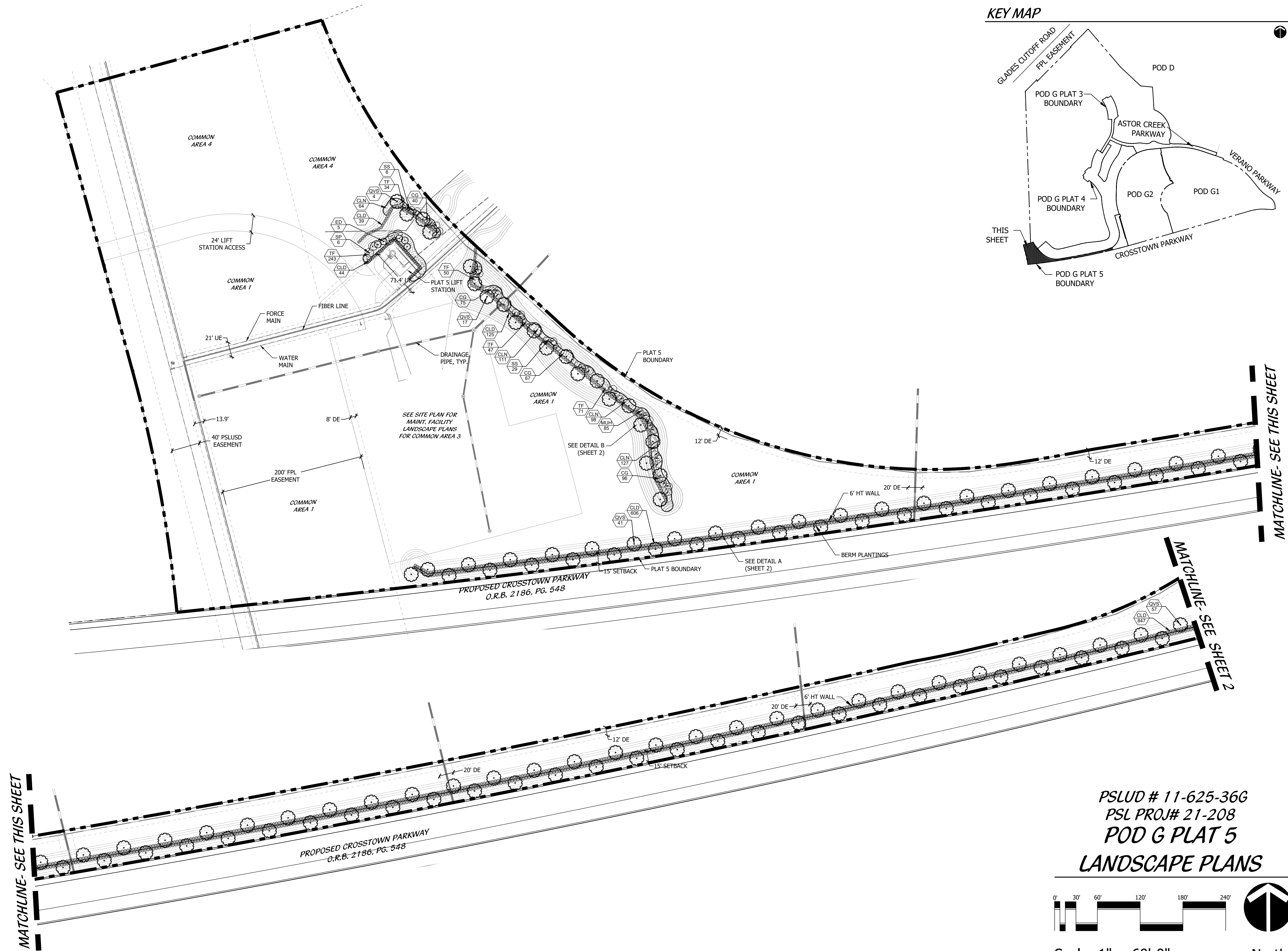
VERANO SOUTH

Kolter Homes
Port St. Lucie, Florida

DESIGNED _____	DTS
DRAWN _____	LAH
DATE _____	09-01-21
REVISIONS _____	10-01-21
	11-11-21
	12-21-21

SHEET 1 OF 3

© COTLEUR & HEARING, INC.
These drawings are the property of the architect and are not to be used for extensions or on other projects except by agreement in writing with the architect. Immediately report any discrepancies to the architect.

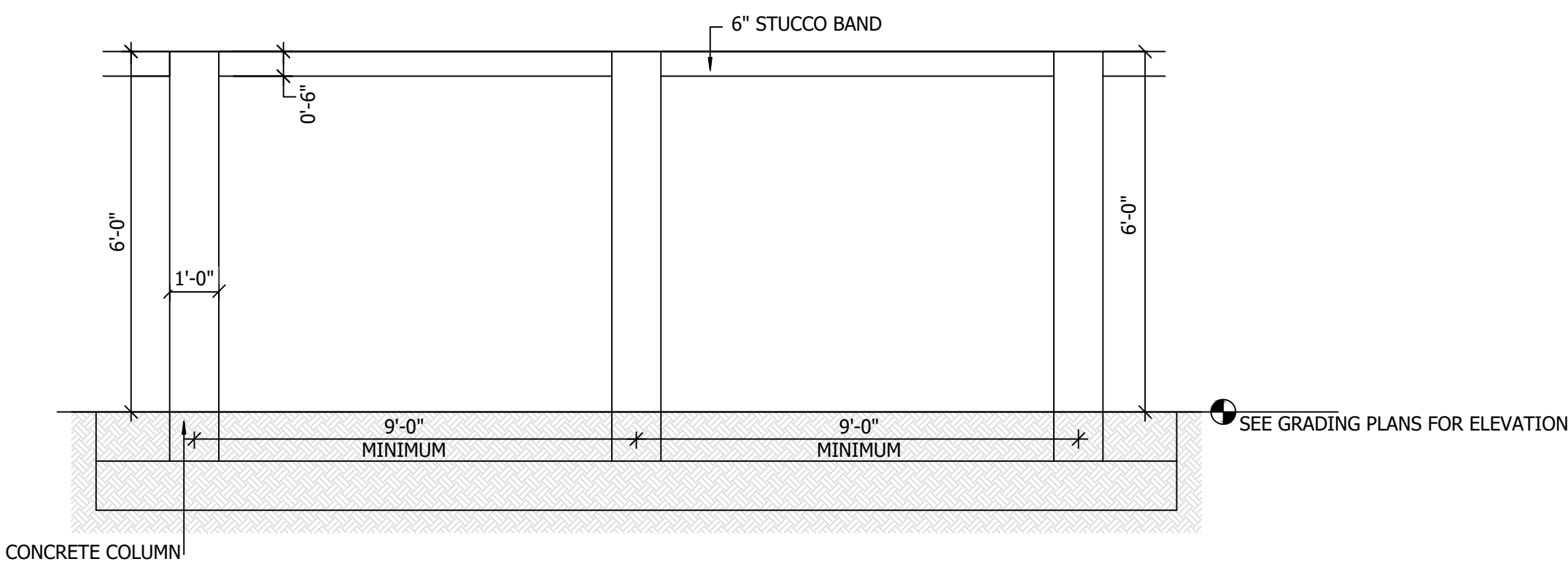


PSLUD # 11-625-36G
PSL PROJ# 21-208
POD G PLAT 5
LANDSCAPE PLANS

Scale: 1" = 60'-0"

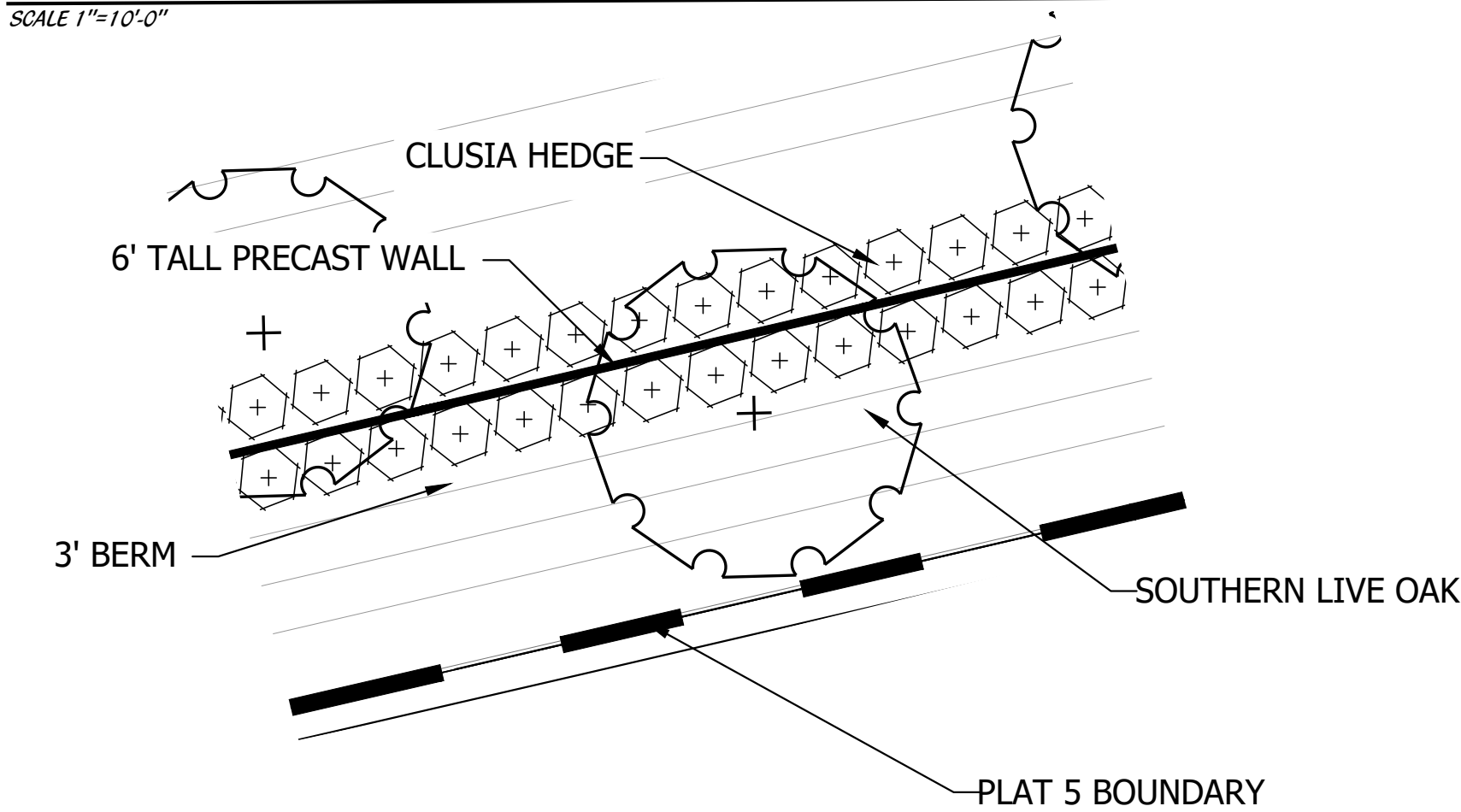
North

TYPICAL WALL DETAIL

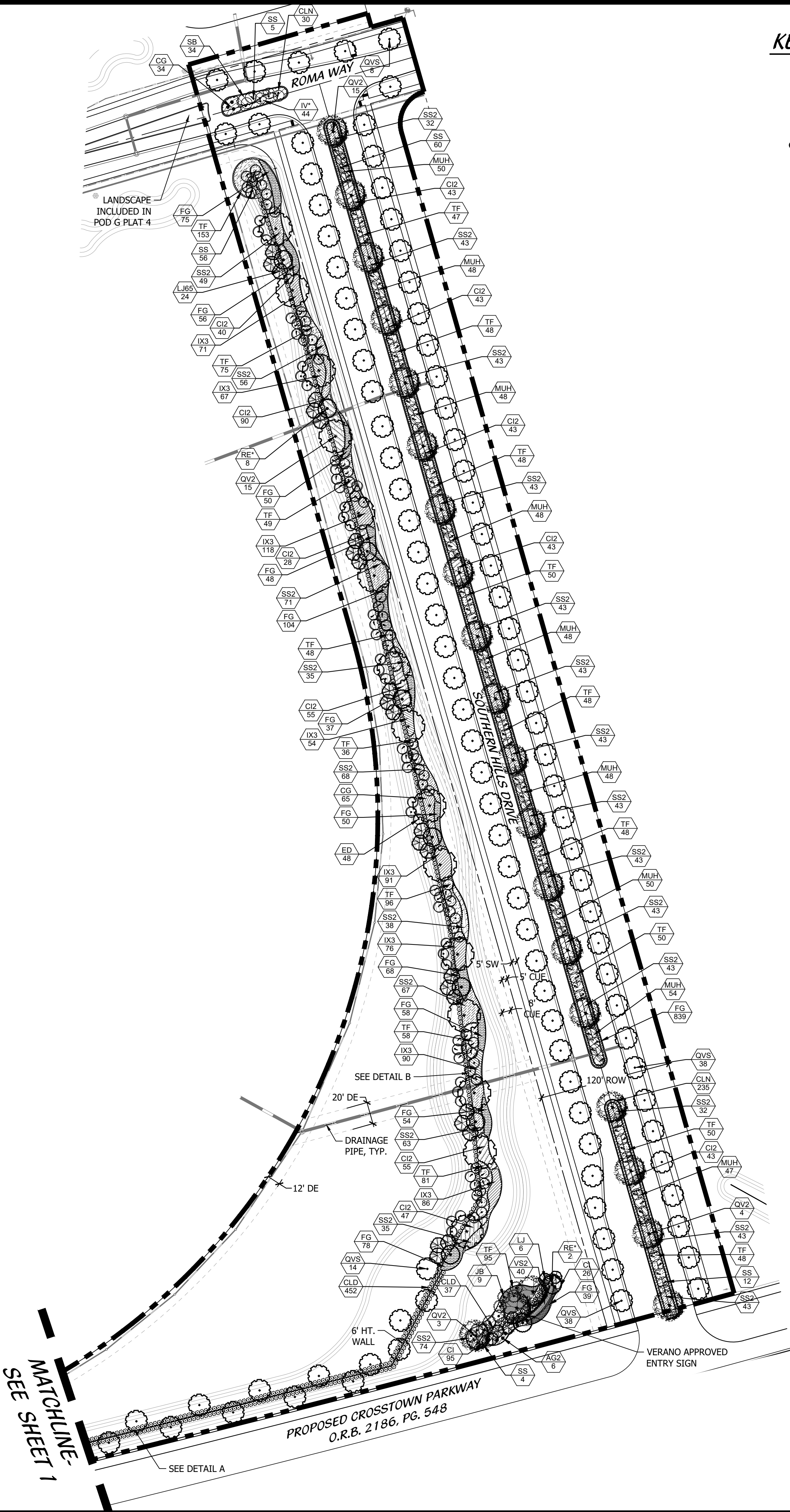
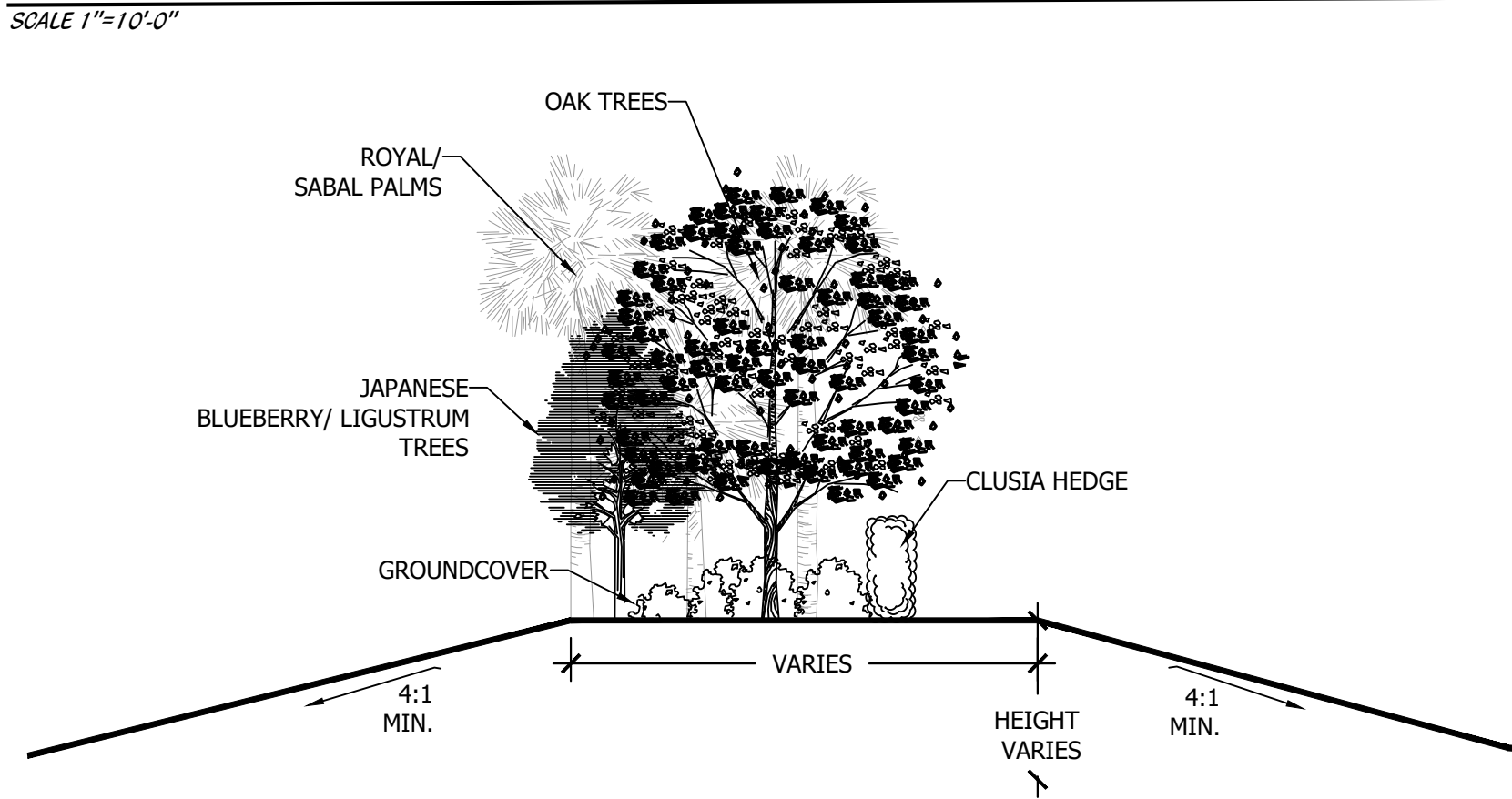


*NOTE: WALL CONSTRUCTION TO BE DETERMINED BY CONTRACTOR AT TIME OF BUILDING. DETAIL CONSISTENT WITH PLAT G1, STELLAR COMMUNITY, AND KOLTER MULTI-FAMILY.

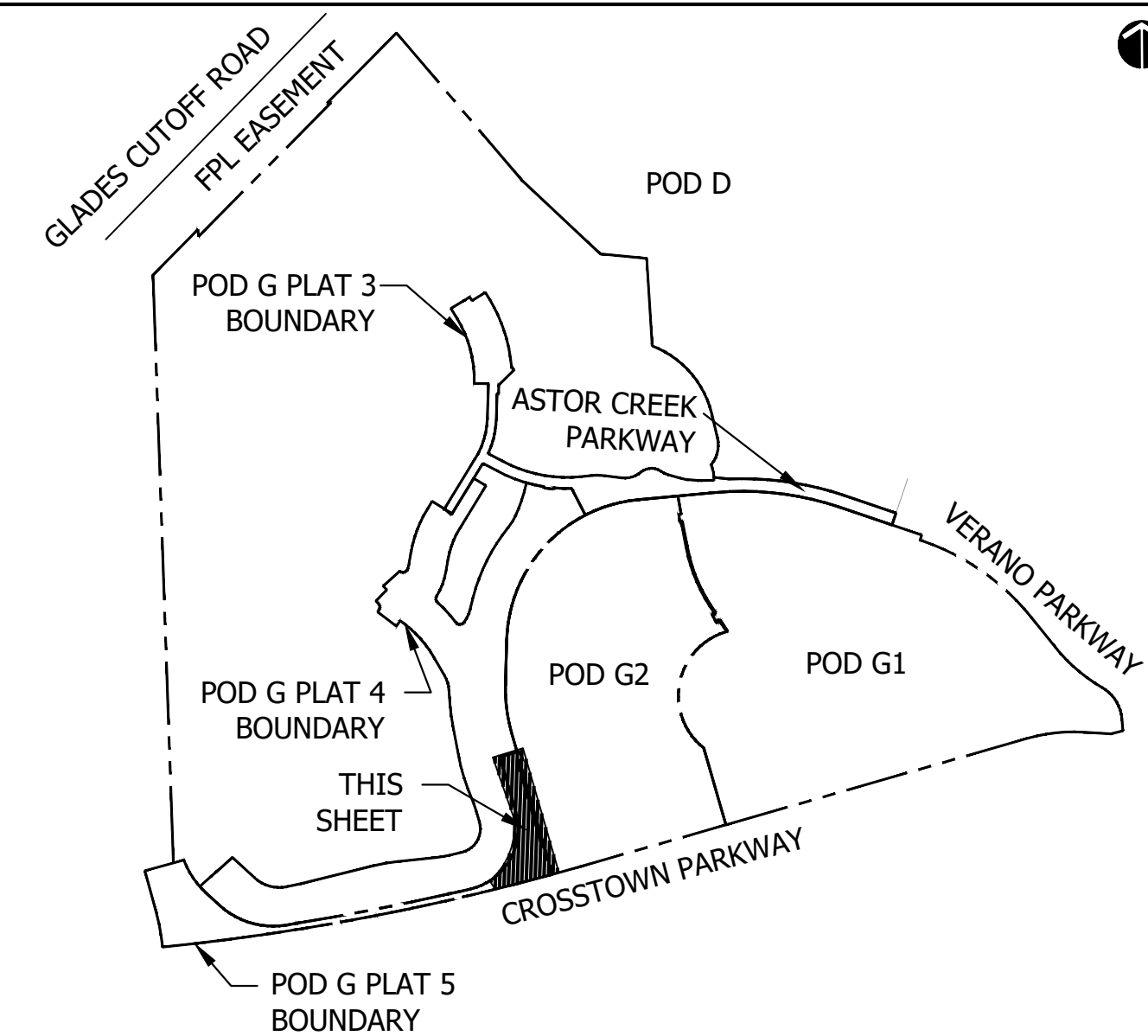
CROSSTOWN BERM PLANTINGS (DETAIL A)



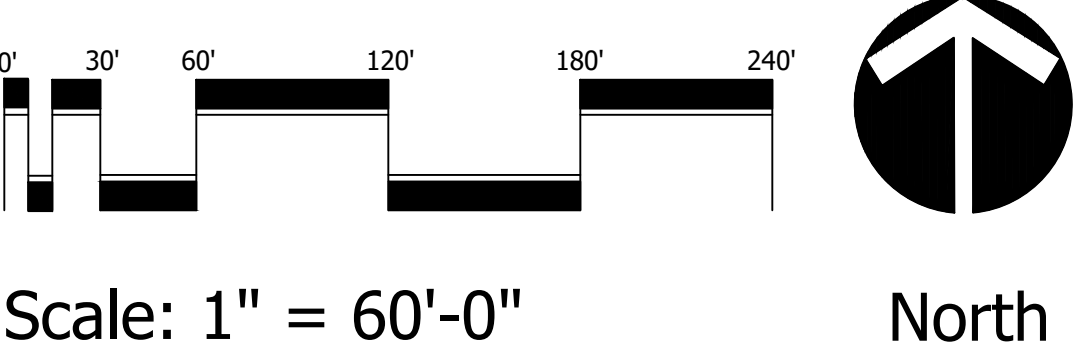
TYPICAL BERM SECTION (DETAIL B)



KEY MAP



PSLUD # 11-625-36G
PSL PROJ# 21-208
POD G PLAT 5
LANDSCAPE PLANS



Cotleur & Hearing

Landscape Architects
Land Planners
Environmental Consultants

1934 Commerce Lane
Suite 1
Jupiter, Florida 33458
561.747.6336 · Fax 747.1377
www.cotleurhearing.com
Lic# LC-C000239

VERANO SOUTH

Kolter Homes

Port St. Lucie, Florida

DESIGNED	DTS
DRAWN	LAH
DATE	09-01-21
REVISIONS	10-01-21
	11-11-21
	12-21-21

LANDSCAPE SPECIFICATIONS

1. GENERAL LANDSCAPE REQUIREMENTS

LANDSCAPE CONTRACT WORK INCLUDES, BUT IS NOT LIMITED TO, SOIL PREPARATION, FINE OR FINISH GRADING, FURNISHING AND INSTALLING PLANT MATERIAL, WATERING, STAKING, GUYING AND MULCHING.

PLANT SIZE AND QUALITY

TREES, PALMS, SHRUBS, GROUNDCOVERS:
PLANT SPECIES AND SIZES SHALL CONFORM TO THOSE INDICATED ON THE DRAWINGS.
NOMENCLATURE SHALL CONFORM TO STANDARD PLANT NAMES, 1942 EDITION. ALL NURSERY STOCK SHALL BE IN ACCORDANCE WITH GRADES AND STANDARDS FOR NURSERY PLANTS PARTS I & II, LATEST EDITION PUBLISHED BY THE FLORIDA DEPARTMENT OF AGRICULTURE AND CONSUMER SERVICES, UNLESS SPECIFIED OTHERWISE. ALL PLANTS SHALL BE FLORIDA GROWN NUMBER 1 OR BETTER AS DETERMINED BY THE FLORIDA DIVISION OF PLANT INDUSTRY. TIGHTLY KNIT PLANT, 30 TRAINED OR FANDED IN ITS DEVELOPMENT THAT FIRST APPEARANCE IS UNQUESTIONABLE AND IT IS OUTSTANDINGLY SUPERIOR IN FORM, NUMBER OF BRANCHES, COMPACTNESS AND SYMMETRY. ALL PLANTS SHALL BE FRESHLY SOWN, HEALTHY, VIGOROUS, WELL BRANCHED AND FREE OF DISEASE AND INSECT EGGS AND LARVAE AND SHALL HAVE ADEQUATE ROOT SYSTEMS. TREES AND PALMS FOR PLANTING ROWS SHALL BE UNIFORM IN SIZE AND SHAPE. ALL MATERIALS SHALL BE SUBJECT TO APPROVAL BY THE LANDSCAPE ARCHITECT. THE PLANTS FURNISHED SHALL BE NORMAL FOR THE VARIETY AND FLORIDA NUMBER 1. PLANTS SHALL BE PRUNED PRIOR TO DELIVERY ONLY UPON THE APPROVAL OF THE LANDSCAPE ARCHITECT.

ALL CONTAINER GROWN MATERIAL SHALL BE HEALTHY, VIGOROUS, WELL-ROOTED PLANTS AND ESTABLISHED IN THE CONTAINER IN WHICH THEY ARE SOLD. THE PLANTS SHALL HAVE TOPS OF GOOD QUALITY AND BE IN A HEALTHY GROWING CONDITION.

AN ESTABLISHED CONTAINER GROWN PLANT SHALL BE TRANSPLANTED INTO A CONTAINER AND GROWN IN THAT CONTAINER SUFFICIENTLY LONG ENOUGH FOR THE NEW FIBROUS ROOTS TO HAVE DEVELOPED SO THAT THE ROOT MASS WILL RETAIN ITS SHAPE AND HOLD TOGETHER WHEN REMOVED FROM THE CONTAINER.

MULCH SHALL BE SHREDED CYPRESS MULCH. ALL MULCH IS TO BE APPLIED TO A DEPTH OF 3" EXCEPT FOR THOSE SPECIFIC SITUATIONS SHOWN BELOW IN SECTIONS 2.3 & 4

FERTILIZER IN BACKFILL MIXTURE FOR ALL PLANTS SHALL CONSIST OF MILORGANTH ACTIVATED SLUDGE MIXED WITH THE BACKFILL AT A RATE OF NOT LESS THAN 50 LBS. PER CUBIC YARD.

FERTILIZER FOR TREES AND SHRUBS MAY BE TABLET FORM OR GRANULAR. GRANULAR FERTILIZER SHALL BE UNIFORM IN COMPOSITION, DRY AND FREE-FLOWING. THIS FERTILIZER SHALL BE DELIVERED TO THE SITE IN THE ORIGINAL UNOPENED BAGS, EACH BEARING THE MANUFACTURER'S STATEMENT OF ANALYSIS, AND SHALL MEET THE FOLLOWING REQUIREMENTS: 15% NITROGEN, 10% PHOSPHORUS, 12% POTASSIUM, PLUS IRON. TABLET FERTILIZER (AGRIFORM OR EQUAL) IN 21 GRAM SIZE SHALL MEET THE FOLLOWING REQUIREMENTS: 20% NITROGEN, 10% PHOSPHORUS AND 5% POTASSIUM.

FERTILIZER WILL BE APPLIED AT THE FOLLOWING RATES:

PLANT SIZE	16-7-12	AGRIFORM TABLETS* (21 GRAM)
1 GAL	1/4 LB.	1
3 GAL	1/3 LB.	3
7-15 GAL	1/2 LB.	5
1"-6" CALIPER	2 LBS./1" CALIPER	2 PER 1" CALIPER
6" AND LARGER	4 LBS./1" CALIPER	2 PER 1" CALIPER
(*) TABLETS TO BE INSTALLED IN TOP 6"		

FLORIDA EAST COAST PALM SPECIAL SHALL BE APPLIED TO ALL PALMS AT INSTALLATION AT A RATE OF .5 LB. PER INCH OF TRUNK UNLESS OTHERWISE SPECIFIED.

FIELD GROWN TREES AND PALMS PREVIOUSLY ROOT PRUNED SHALL OBTAIN A ROOT BALL WITH SUFFICIENT ROOTS FOR CONTINUED GROWTH WITHOUT RESULTING SHOCK.

CONTRACTOR SHALL NOT MARK OR SCAR TRUNK IN ANY FASHION.

PLANTS SHALL BE WATERED AS NECESSARY OR WITHIN 24 HOURS AFTER NOTIFICATION BY THE LANDSCAPE ARCHITECT.

THE LOCATIONS OF PLANTS, AS SHOWN IN THESE PLANS, ARE APPROXIMATE. THE FINAL LOCATIONS MAY BE ADJUSTED TO ACCOMMODATE UNFORESEEN FIELD CONDITIONS. MAJOR ADJUSTMENTS TO THE LAYOUT ARE TO BE APPROVED BY THE LANDSCAPE ARCHITECT.

ALL PLASTIC FABRIC SHALL BE REMOVED FROM PLANT MATERIAL AT TIME OF INSTALLATION.

ALL TREES MUST BE STAKED AS SHOWN ON THE PLANTING DETAILS WITHIN 24 HOURS OF PLANTING. STAKES TO REMAIN FOR A MINIMUM OF 3 MONTHS, BUT NO LONGER THAN 18 MONTHS. CONTRACTOR IS RESPONSIBLE FOR MAINTENANCE AND REMOVAL OF THE STAKES.

ALL TREES MUST BE PRUNED AS PER LANDSCAPE ARCHITECT'S DIRECTION. SABAL PALMS MAY BE HURRICANE CUT.

ALL SHRUBS, TREES AND GROUND COVER WILL HAVE IMPROVED SOIL AS PER PLANTING SOIL NOTES. THE SOILS SHALL BE PLACED IN THE HOLE DURING PLANTING. TOP DRESSING ONLY IS NOT ACCEPTABLE.

DO NOT ALLOW AIR POCKETS TO FORM WHEN BACKFILLING. ALL TREES SHALL BE SPIKED IN UTILIZING WATER AND A TREE BAR.

THE LANDSCAPE CONTRACTOR SHALL WATER, MULCH, WEED, PRUNE, AND OTHERWISE MAINTAIN ALL PLANTS, INCLUDING SOD, UNTIL THE CONTRACT IS COMPLETED OR ACCEPTANCE BY LANDSCAPE ARCHITECT. SETTLED PLANTS SHALL BE RESET TO PROPER GRADE, PLANTING SAUCERS RESTORED, AND DEFECTIVE WORK CORRECTED.

THE LANDSCAPE CONTRACTOR SHALL AT ALL TIMES KEEP THE PREMISES FREE FROM ACCUMULATION OF WASTE MATERIALS OR DEBRIS CAUSED BY THE PERFORMANCE OF THE WORK. THE CONTRACTOR SHALL PROMPTLY REMOVE ALL WASTE MATERIALS, DEBRIS, UNUSED PLANT MATERIAL, EMPTY PLANT CONTAINERS AND ALL EQUIPMENT FROM THE PROJECT SITE.

UPON COMPLETION OF THE WORK, THE LANDSCAPE CONTRACTOR SHALL NOTIFY THE LANDSCAPE ARCHITECT AND REQUEST A FINAL INSPECTION. ANY ITEMS THAT ARE JUDGED INCOMPLETE OR UNACCEPTABLE BY THE LANDSCAPE ARCHITECT OR OWNER'S REPRESENTATIVE SHALL BE PROMPTLY CORRECTED BY THE LANDSCAPE CONTRACTOR.

THE LANDSCAPE CONTRACTOR SHALL GUARANTEE ALL PLANT MATERIAL FOR A PERIOD OF SIX (6) MONTHS FROM THE DATE OF CONDITIONAL ACCEPTANCE IN WRITING FROM THE LANDSCAPE ARCHITECT. AT THE TIME OF CONDITIONAL ACCEPTANCE, THE SIX (6) MONTH PERIOD SHALL COMMENCE. ANY MATERIALS WHICH HAVE DIED DURING THIS PERIOD SHALL BE PROMPTLY REPLACED WITH SPECIMENS THAT MEET THE MINIMUM REQUIREMENTS CALLED FOR ON THE DRAWINGS. THE LANDSCAPE CONTRACTOR SHALL NOT BE HELD RESPONSIBLE FOR THE DEATH OR DAMAGE RESULTING FROM LIGHTNING, VANDALISM, AND AUTOMOBILES OR FROM NEGLIGENCE BY THE OWNER. CONTRACTOR SHALL BE RESPONSIBLE FOR WATERING AND OTHERWISE MAINTAINING PLANTS UP TO THE CONDITIONAL ACCEPTANCE PERIOD, UNLESS A WRITTEN AGREEMENT WITH THE LANDSCAPE ARCHITECT PROVIDES FOR A DIFFERENT ARRANGEMENT.

ALL LABOR AND MATERIAL FOR SOIL AMENDMENTS AND FERTILIZER THAT IS REQUIRED TO INSURE THE SUCCESSFUL ESTABLISHMENT AND SURVIVAL OF THE PROPOSED VEGETATION, AS WELL AS ALL THE COST FOR THE REMOVAL OF UNSUITABLE OR EXCESS BACKFILL MATERIAL, SHALL BE INCLUDED IN THE CONTRACTOR'S BID TO PERFORM THE WORK REPRESENTED IN THIS PLAN SET.

2. PLANTING TREES

EXCAVATE PIT AS PER PLANTING DETAILS. COMPACT LAYER OF TOPSOIL IN PIT WITH A SLIGHTLY DISHD GRADE TO CENTER.

BACKFILL AROUND BALL WITH TOPSOIL AND SLIGHTLY COMPACT. WATER THOROUGHLY AS LAYERS ARE PLACED TO ELIMINATE VOIDS AND AIR POCKETS. BUILD A 6" HIGH BERM OF TOPSOIL BEYOND EDGE OF EXCAVATION. APPLY 3" (AFTER SETTLEMENT) OF MULCH.

PRUNE TREE TO REMOVE DAMAGED BRANCHES, IMPROVE NATURAL SHAPE AND THIN OUT STRUCTURE. DO NOT REMOVE MORE THAN 15% OF BRANCHES. DO NOT PRUNE BACK TERMINAL LEADER.

GUY AND STAKE TREE IN ACCORDANCE WITH THE STAKING DETAILS IMMEDIATELY AFTER PLANTING.

3. PLANTING SHRUBS

LAYOUT SHRUBS TO CREATE A CONTINUOUS SMOOTH FRONT LINE AND FILL IN BEHIND.

EXCAVATE PIT OR TRENCH TO 2 TIMES THE DIAMETER OF THE BALLS OR CONTAINERS OR 1'-0" WIDER THAN THE SPREAD OF ROOTS AND 3" DEEPER THAN REQUIRED FOR POSITIONING AT PROPER HEIGHT. COMPACT A LAYER OF TOPSOIL IN BOTTOM BEFORE PLACING PLANTS. BACKFILL AROUND PLANTS WITH PLANTING MIXTURE. COMPACTED TO ELIMINATE VOIDS AND AIR POCKETS. FORM GRADE SLIGHTLY DISHD AND BERMED AT EDGES OF EXCAVATION. APPLY 3" OF MULCH.

PRUNE SHRUBS TO REMOVE DAMAGED BRANCHES, IMPROVE NATURAL SHAPE AND THIN OUT STRUCTURE. DO NOT REMOVE MORE THAN 15% OF BRANCHES.

4. PLANTING GROUND COVER

LOOSEN SUBGRADE TO DEPTH OF 4" IN AREAS WHERE TOPSOIL HAS BEEN STRIPPED AND SPREAD SMOOTH.

SPACE PLANTS AS OTHERWISE INDICATED. DIG HOLES LARGE ENOUGH TO ALLOW SPREADING OF ROOTS. COMPACT BACKFILL TO ELIMINATE VOIDS AND LEAVE GRADE SLIGHTLY DISHD AT EACH PLANT. WATER THOROUGHLY. APPLY 3" OF MULCH OVER ENTIRE PLANTING BED. LIFTING PLANT FOLIAGE ABOVE MULCH. PURPLE QUEEN GROUNDCOVER, IF SPECIFIED, SHALL ONLY RECEIVE 1" OF MULCH.

DURING PERIODS OF HOT SUN AND/OR WIND AT TIME OF PLANTING, PROVIDE PROTECTIVE COVER FOR SEVERAL DAYS OR AS NEEDED.

5. PLANTING LAWNS

SODDING: SOD TYPE SPECIFIED ON PLANT LIST SHALL BE MACHINE STRIPPED NOT MORE THAN 24 HOURS PRIOR TO LAYING.

LOOSEN SUBGRADE TO DEPTH OF 4" AND GRADE WITH TOPSOIL EITHER PROVIDED ON SITE OR IMPORTED TO FINISH DESIGN ELEVATIONS. ROLL PREPARED LAWN SURFACE. WATER THOROUGHLY, BUT DO NOT CREATE MUDDY SOIL CONDITION.

FERTILIZE SOIL AT THE RATE OF APPROXIMATELY 10 LBS. PER 1,000 S.F. SPREAD FERTILIZER OVER THE AREA TO RECEIVE GRASS BY USING AN APPROVED DISTRIBUTION DEVICE CALIBRATED TO DISTRIBUTE THE APPROPRIATE QUANTITY. DO NOT FERTILIZE WHEN WIND VELOCITY EXCEEDS 15 M.P.H. THOROUGHLY MIX FERTILIZER INTO THE TOP 2" OF TOPSOIL.

LAY SOD STRIPS WITH TIGHT JOINTS. DO NOT OVERLAP. STAGGER STRIPS TO OFFSET JOINTS IN ADJACENT COURSES. WORK SIFTED SOIL MIX INTO MINOR CRACKS BETWEEN JOINTS OF SOD AND REMOVE EXCESS SOIL DEPOSITS FROM SODDED AREAS. SOD ON SLOPES GREATER THAN 3:1 SHALL BE STAKED IN PLACE. ROLL OR STAMP SLIGHTLY AND WATER THOROUGHLY WITH A FINE SPRAY IMMEDIATELY AFTER PLANTING.

6. MISCELLANEOUS LANDSCAPE WORK

LANDSCAPE MAINTENANCE

MAINTAIN LANDSCAPE WORK UNTIL FINAL ACCEPTANCE IS ISSUED BY THE OWNER'S REPRESENTATIVE. INCLUDE WATERING, WEEDING, CULTIVATING, RESTORATION OF GRADE, MOWING AND TRIMMING GRASS, PRUNING TREES AND SHRUBS, PROTECTION FROM INSECTS AND DISEASES, FERTILIZING AND SIMILAR OPERATIONS AS NEEDED TO INSURE NORMAL GROWTH AND GOOD HEALTH FOR LIVE PLANT MATERIAL.

PLANT MATERIAL SUBSTITUTION

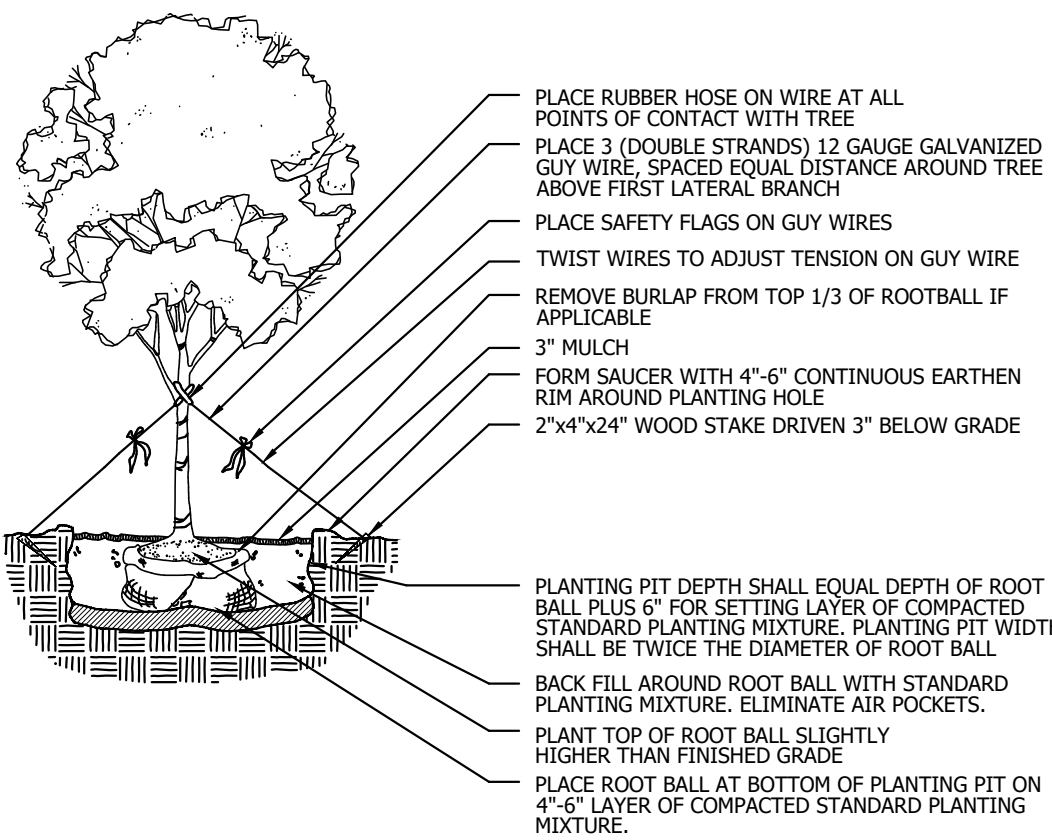
NO SUBSTITUTION OF PLANT MATERIAL, TYPE OR SIZES WILL BE PERMITTED WITHOUT AUTHORIZATION FROM THE LANDSCAPE ARCHITECT.

PLANTING BED PREPARATION

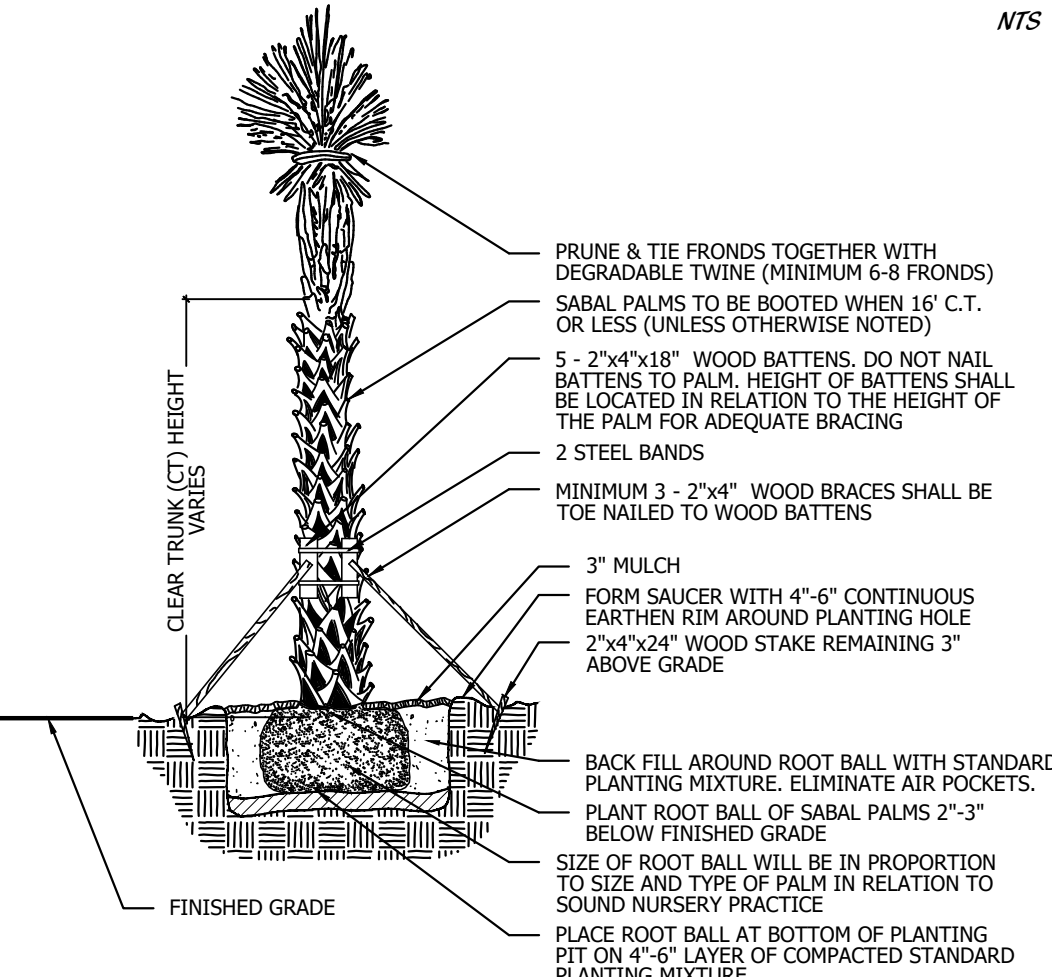
ALL PLANTING BEDS SHALL BE PROPERLY PREPARED PRIOR TO THE COMMENCEMENT OF ANY PLANTING. PLANTING AREAS, INCLUDING LAWNS SHALL BE FREE OF ALL WEEDS OR NUISANCE VEGETATION. IF TORPEDO GRASS (Panicum Repens) IS PRESENT OR ENCOUNTERED DURING PLANTING, THE LANDSCAPE CONTRACTOR SHALL PREPARE PLANTING UNITS THAT CAN BE DEMONSTRATED THAT IT HAS BEEN COMPLETELY REMOVED OR ERADICATED. THERE SHALL BE NO EXCEPTIONS TO THIS PROVISION.

ALL LANDSCAPE AREAS AND BEDS WILL BE FREE OF SHEL, ROCK AND CONSTRUCTION DEBRIS AND WILL BE EXCAVATED TO A DEPTH OF 30 INCHES OR TO CLEAR, NATIVE SOIL AND FILLED WITH THE SPECIFIED BACKFILL MIXTURE.

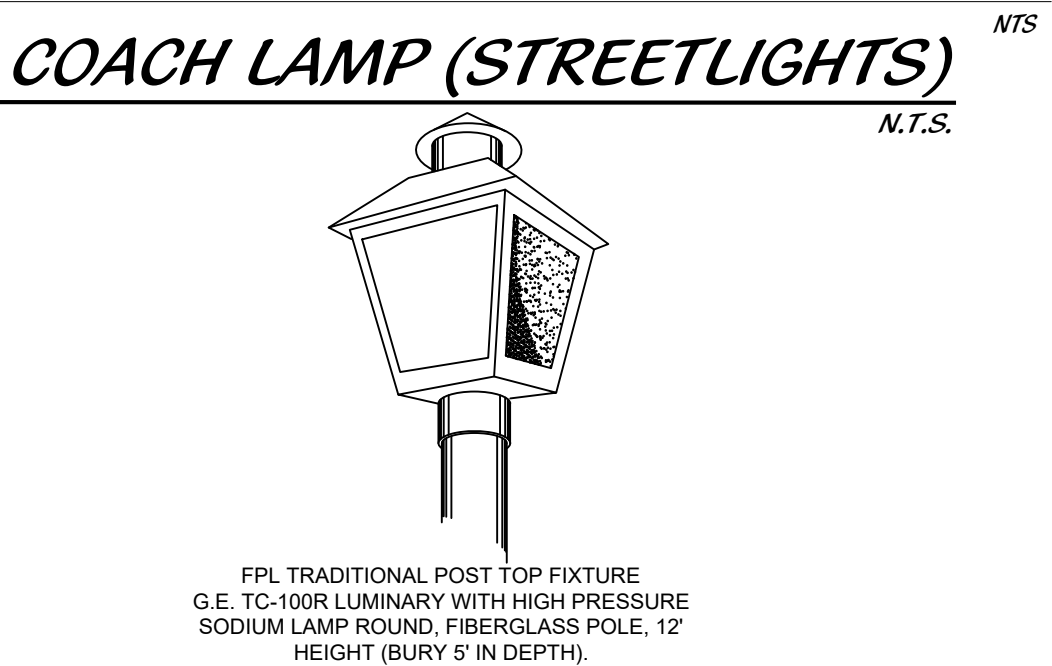
PLANTING DETAILS



LARGE TREE PLANTING DETAIL



PALM PLANTING DETAIL



LANDSCAPE NOTES

ALL LANDSCAPING AND SITE IMPROVEMENTS SHALL CONFORM TO ALL APPLICABLE PROVISIONS OF THE CITY OF PORT ST. LUCIE CHAPTER 153, LANDSCAPE AND LAND CLEARING CODE, CURRENT ADDITION AND ANY OTHER APPLICABLE CITY REGULATIONS.

THE LANDSCAPE CONTRACTOR SHALL NOT MAKE ANY SUBSTITUTIONS OR CHANGES WITHOUT THE AUTHORIZATION OF THE OWNER AND THE LANDSCAPE ARCHITECT.

THE LANDSCAPE CONTRACTOR SHALL REVIEW THE PROJECT DRAINAGE PLANS AND VERIFY THE LOCATION OF ALL UNDERGROUND UTILITIES PRIOR TO CONSTRUCTION AND AVOID ALL CONFLICTS.

THE LANDSCAPE CONTRACTOR SHALL BE RESPONSIBLE FOR ALL TURF AREAS, EXCEPT AS NOTED. BAHIA SOD WILL BE UTILIZED IN DRY RETENTION AREAS AND IN AREAS OF EXISTING TREES TO REMAIN.

ALL LANDSCAPING PLANTED IN THE RIGHT-OF-WAY AND ON PRIVATE PROPERTY SHALL BE LOCATED SO THAT NO CONFLICT OCCURS WITH VEHICULAR SIGHT DISTANCES AT INTERSECTIONS AND AT DESIGNATED PEDESTRIAN CROSSWALKS.

NO FENCE, WALL, HEDGE, OR SHRUB PLANTING WHICH OBSTRUCTS SIGHT LINES AND ELEVATIONS BETWEEN TWO (2) AND SIX (6) FEET ABOVE THE CROWN OF THE ROAD SHALL BE PLACED OR PERMITTED TO REMAIN ON ANY CORNER LOT IN ANY ZONING DISTRICT WITHIN THE TRIANGULAR AREA FORMED BY THE STREET PROPERTY LINES AND A LINE CONNECTING THEM AT POINTS TWENTY-FIVE (25) FEET FROM THE INTERSECTION OF THE STREET LINES, OR IN THE CASE OF A ROUNDED PROPERTY CORNER FROM THE INTERSECTION OF THE STREET PROPERTY LINES EXTENDED. THE SAME SIGHT LINE LIMITATIONS SHALL APPLY ON ANY LOT WITHIN TEN (10) FEET FROM THE EDGE OF A DRIVEWAY OR ALLEY. NO TREE SHALL BE PERMITTED TO REMAIN WITHIN THE ABOVE DESCRIBED LIMITS OF INTERSECTIONS UNLESS THE FOLIAGE LINE IS MAINTAINED AT OR ABOVE SIX (6) FEET ABOVE THE ROADWAY INTERSECTION ELEVATION TO PREVENT OBSTRUCTION OF SIGHT LINES.

ALL LANDSCAPING SHALL BE LOCATED IN THE RIGHT-OF-WAY AND OR ON PRIVATE PROPERTY SO THAT NO CONFLICT OCCURS WITH DESIGNATED CITY DRAINAGE AND / OR UTILITY EASEMENTS, OVERHEAD AND UNDERGROUND UTILITY LINES AND OR UTILITY STRUCTURES. NO TREE IS ALLOWED IN UTILITY EASEMENTS OR CLOSER THAN TEN FEET TO ANY CITY UTILITY LINES.

TREES AT ENTRANCEWAYS SHALL BE LIMBED UP TO MAXIMIZE SITE DISTANCE. CLEAR VISIBILITY SHALL BE MAINTAINED BETWEEN 24" AND 8\"/>

PLANTING LINES WITHIN AND ADJACENT TO PARKING AREAS SHALL BE FREE OF LIME ROCK AND OTHER FOREIGN MATERIALS TO A DEPTH OF 6\"/>

THE SURFACE OF ALL AREAS TO RECEIVE LANDSCAPING WILL BE FINELY GRADED AND SET SO DIPS AND DEPRESSIONS ARE REMOVED AND POSITIVE DRAINAGE IS ACHIEVED. THE FINISHED GRADE OF SOD AND PALM AREAS SHALL BE SET SO THAT MULCH WASHOUTS DO NOT OCCUR AND THERE IS A SMOOTH TRANSITION FROM PAVED SURFACES TO ADJACENT LAWN AREAS.

ALL TREE STAKING MATERIALS SHALL BE LOCATED WITHIN MULCH BEDS AND OR RINGS.

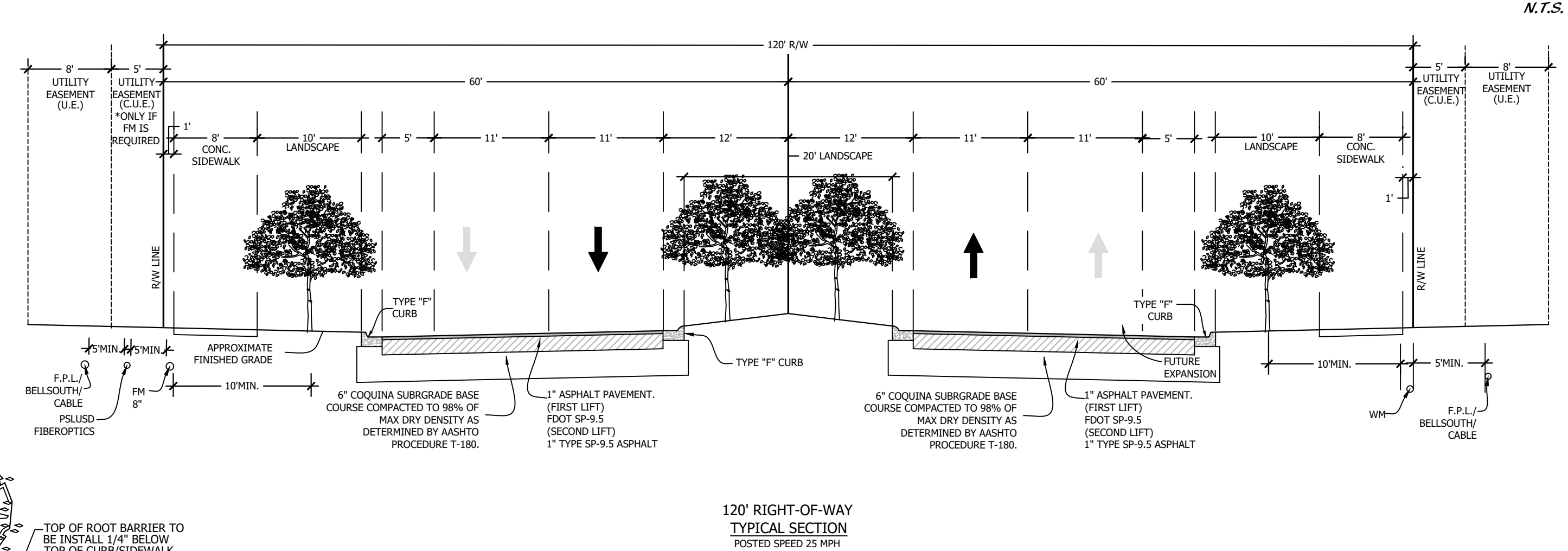
ALL AREAS SHALL BE FULLY IRRIGATED IN ACCORDANCE WITH THE REQUIREMENTS OF THE CITY OF PORT ST. LUCIE. IRRIGATION SHOP DRAWINGS SHALL BE SUBMITTED TO THE OWNER AND LANDSCAPE ARCHITECT FOR APPROVAL PRIOR TO CONSTRUCTION. THE IRRIGATION SYSTEM SHALL BE DESIGNED TO PROVIDE 100% OVERLAP COVERAGE TO ALL LANDSCAPE AND SOD AREAS.

THE IRRIGATION WATER SOURCE SHALL BE WELL WATER OR SUCTIION FROM AN ONSITE STORMWATER MANAGEMENT AREA. THE IRRIGATION SYSTEM SHALL BE EQUIPPED WITH A RAIN SENSOR/CUT OFF SWITCH IN ACCORDANCE WITH STATE AND LOCAL REQUIREMENTS.

LANDSCAPE IRRIGATION NOTES:
A. ALL AREAS TO RECEIVE 100% IRRIGATION COVERAGE
B. ALL ZONES WILL BE AUTOMATICALLY CONTROLLED
C. CLOCKS TO HAVE AUTOMATIC "RAIN SENSORS"
D. WATER SOURCE MAY BE POTABLE OR WELL AND SHALL BE DETERMINED AT TIME OF BUILDING PERMIT APPLICATION
E. THE IRRIGATION SYSTEM WILL BE DESIGNED TO ACCEPT RECLAIMED WASTEWATER ONCE IT BECOMES AVAILABLE TO THE PROPERTY

NO LIGHT POLE OR ASSOCIATED CONDUIT SHALL BE LOCATED WITHIN 5' OF A PSLUD FACILITY.

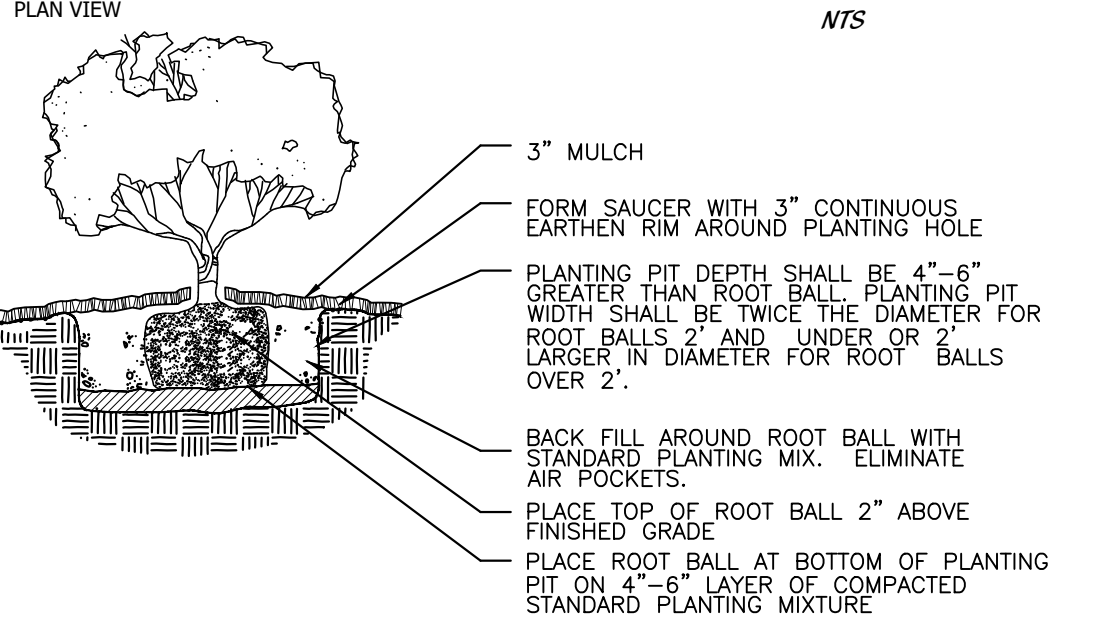
ULTIMATE 120' RIGHT-OF-WAY SECTION



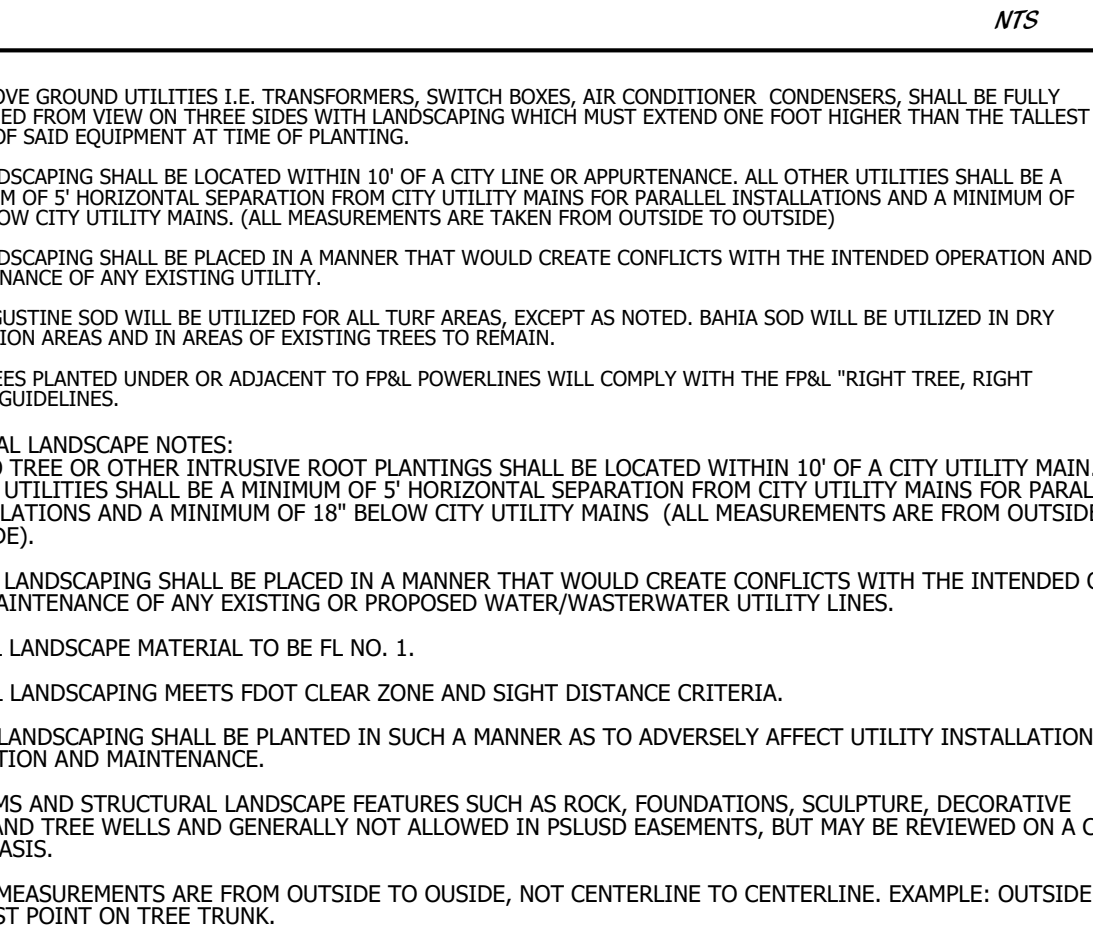
PLANT LIST

TREES	QTY	BOTANICAL NAME	COMMON NAME	CONT	CAL	SIZE	NATIVE	REMARKS
ED	53	ELAEODENDRUM DECIPUE	JAPANESE BLUEBERRY TREE	45 GAL	3" CAL	12" OA	N	CONICAL, FULL TO BASE, MATCHED
JB	9	JUNIPERUS VIRGINIANA 'BRODIE'	BRODIE COLUMBIAN CEDAR	45 GAL	2" CAL	14" OA, 6'-8" SPD	N	FULL & THICK
LI	6	LIGUSTRUM JAPONICUM	JAPANESE PRIVET	45 GAL	2" CAL	8'-10" HT, 6'-8" SPD, 3"	N	FULL CANOPY, MULTI TRUNK, LIMB UP
LJ65	24	LIGUSTRUM JAPONICUM	JAPANESE PRIVET	65 GAL	3 TRK MIN., 1'-2" CT. EA.	8' HT, 8' SPD.	N	FULL CANOPY, 4' CT., MULTI-TRUNK
QV2	37	QUERCUS VIRGINIANA	LIVE OAK	200 GAL	5'-6" CAL	14'-16" HT, 6'-8" SPD	N	FULL CANOPY, 5' C.T. MIN.
QV5	209	QUERCUS VIRGINIANA 'SKY CLIMBER'	SKY CLIMBER LIVE OAK	NA	3" CAL	14' HT	N	FULL CANOPY, DOUBLE DUG
PALM TREES	QTY	BOTANICAL NAME	COMMON NAME	COMT	CAL	SIZE	NATIVE	REMARKS
RE'	10	ROYSTONIA ELATA	ROYAL PALM	FIELD GROWN	NA	18" CT	Y	FULL CANOPY, FLORIDA FANCY
SP	6	SABAL PALMETTO	SABAL PALMETTO	B & B	NA	12", 18", 24" CT, STGG	Y	SLICK TRUNK
SS	172	SABAL PALMETTO	CURVED SABAL PALM	B & B	NA	8", 12", 18" CT, STGG.	Y	SLICK TRUNK, STAGGER HEIGHTS
SHRUBS	QTY	BOTANICAL NAME	COMMON NAME	CONT	SIZE	SPACE	NATIVE	REMARKS
AGZ	9	AGAVE AMERICANA 'GAINESVILLE BLUE'	BLUE AGAVE	15 GAL	2.5" X 2.5"	2.5" O.C.	N	FULL, SPECIMEN
CI	121	CHRYSOBALANUS ICACO	RED TIP COCOPLUM	7 GAL	3" X 2"	2.5" OC	Y	FULL & THICK
CLD	2,160	CLUSIA GUTTIFERA	SMALL-LEAF CLUSIA	15 GAL	5" - 6" OA	3" - 4" O.C.	Y	FULL & THICK, FLORIDA FANCY
GROUND COVERS	QTY	BOTANICAL NAME	COMMON NAME	COMT	SIZE	SPACE	NATIVE	REMARKS
CG	372	CHRYSOBALANUS ICACO 'GREEN TIP'	RED TIP COCOPLUM	3 GAL	30" X 30"	2.5" OC	Y	FULL & THICK
CJZ	530	CHRYSOBALANUS ICACO 'RED TIP'	RED TIP COCOPLUM	7 GAL	3" CAL	2.5" OC	Y	FULL & THICK
CJN	665	CLUSIA GUTTIFERA 'NANA'	DWARF CLUSIA	3 GAL	2" CAL	2" OC	N	FULL & THICK, FLORIDA FANCY
FG	1,556	FICUS MICROCARPA 'GREEN ISLAND'	GREEN ISLAND FICUS	3 GAL	2" CAL	2" OC	Y	FULL & THICK, FLORIDA FANCY
IYV	44	ILEX VOMITORIA 'STOKES DWARF'	DWARF YAUPOIN HOLLY	3 GAL	18" X18"	2" OC	Y	FULL & THICK
D3	653	DORAX 'MAUI YELLOW'	YELLOW MAUI DORAX	3 GAL	2" X 2"	2" OC	N	FULL & THICK
MUH	526	MUHLENBERGIA CAPITULARIS	PINK MUHLY GRASS	3 GAL	2" X 2"	2" OC	Y	FULL & THICK
SS2	1,136	SERENOA REPENS SILVER	SAW PALMETTO	3 GAL	1.5" X 1.5"	2.5" O.C.	Y	FULL & THICK
SB	34	SPARTINA BAKERI	SAND CORD GRASS	3 GAL	2" X 2"	2.5" OC	Y	FULL & THICK
TF	1,603	TRIPSACUM FLORIDANA	DWARF FANWATCHEE GRASS	3 GAL	2" X 2"	2" OC	N	FULL & THICK
V52	40	VIBURNUM SUSPENSUM	SANDANWIA VIBURNUM	3 GAL	2" X 1.5"	2" OC	N	FULL & THICK

ROOT BARRIER DETAIL



SHRUB/GROUND COVER PLANTING DETAIL

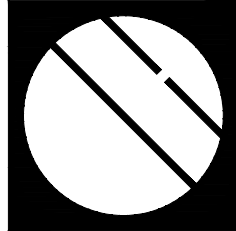


PSLUD # 11-625-36G

PSL PROJ# 21-208

POD G PLAT 5

LANDSCAPE DETAILS



Cotleur & Hearing

Landscape Architects
Land Planners
Environmental Consultants

1934 Commerce Lane
Suite 1
Jupiter, Florida 33458
561.747.6336 • Fax 747.1377
www.cotleurhearing.com
Lic# LC-C000239

VERANO SOUTH
Kolter Homes
Port St. Lucie, Florida

DESIGNED	DTS
DRAWN	LAH
DATE	09-01-21
REVISIONS	10-01-21
	11-11-21
	12-21-21

SHEET 3 OF 3
© COTLEUR & HEARING, INC.
These drawings are the property of the architect and are not to be used for extension or on other projects except by agreement in writing with the architect. Immediately report any discrepancies to the architect.