



Port St. Lucie Parks & Recreation Master Plan 10-year Update

Appendix - Capital Improvement Projects



Appendix 1 - Phased Capital Improvement Projects

Figure A.1 identifies a preliminary complete list of the prioritized projects for Staff, Mayor, and Council’s consideration. This list was used to inform the top summary list of projects in the 2025 Parks and Recreation Master Plan Update. Additional projects associated with improvement to existing parks, access to natural areas, and park land acquisition were added to the top summary list of projects based on input provided by Staff and City Leadership.

It is important to note that this list should not be considered as final and should be reviewed and revised annually based on new City priorities, developments, and new projects.

Figure A.1 contains the Project Rank, Project Number, Project Name, Project Description, Total Opinion of Probable Order of Magnitude Planning Level Costs for the project, and Total Opinion of Probable Operations and Maintenance Costs for the project (in 2025 dollars). These amounts are based on the Consultant Team’s experience with similar projects in Florida. However, the City should complete feasibility studies to confirm Order of Magnitude Planning Level Opinion of Probable Costs and Order of Magnitude Annual Operations and Maintenance Costs.

Figure A.1 - Prioritized Projects

PHASE 1 PRIORITIZED PROJECTS					
Project Rank	Project Number	Project Name	Project Description	Order of Magnitude Planning Level Probable Costs	Order of Magnitude Annual Operations and Maintenance Costs
1	SP-24	Port St. Lucie High School	Light 1 rectangle field - 360'x160' - Football with track. (One of seven rectangle fields needed)	\$500,000	\$15,000
2	SP-03	Mariposa Elementary	Light 1 rectangle field - 300'x200', multi-purpose diamond 200'x60'. (One of seven rectangle fields needed)	\$1,000,000	\$30,000
2	SP-12	Southport Middle School	Light 1 rectangle field - 200'x150'. (One of seven rectangle fields needed)	\$500,000	\$15,000
2	SP-21	Tradition Preparatory High School	Light 1 rectangle field - 280'x180'. (One of seven rectangle fields needed)	\$500,000	\$15,000
2	SP-24	Port St. Lucie High School	Light 3 rectangle field - 350'x180'. (Three of seven rectangle fields needed)	\$1,500,000	\$45,000
3	-	Sportsman's Park - Phase 1	Redesign, renovate, and expand park. (Build-Out Opinion of Probable Cost - 42.5 Acres = \$63.8M. Phase 1 included as 20 acres).	\$30,000,000	\$300,000
3	CC-01	New Community Center - Torino Regional Park	New Community Center with Gymnasium.	\$30,000,000	\$1,225,000
3	CC-03	New Community Center - Tradition Regional Park	New Community Center with Gymnasium.	\$30,000,000	\$1,225,000
4	CP-01	New Community Park	Develop Community Park (Build-Out Opinion of Probable Cost - 30 Acres = \$45M).	\$22,500,000	\$225,000
4	SP-07	Palm Pointe Educational Research School	Light and improve 1 rectangle field - 340'x200', multi-purpose diamond 350'x90'. (One of seven rectangle fields needed)	\$2,000,000	\$60,000
4	SP-14	St. Lucie West Centennial High School	Light 1 softball - 200'x60'. (One of seven diamond fields needed)	\$500,000	\$15,000
4	SP-16	St. Lucie West Centennial High School	Light 1 baseball - 350'x90'. (One of seven diamond fields needed)	\$500,000	\$15,000
5	-	Jaycee Park & YMCA	Renovate existing buildings.	\$2,000,000	\$87,500
5	CC-04	New Community Center	New Community Center with Gymnasium.	\$28,000,000	\$1,225,000
6	-	Swan Park	Improve drainage and improve turf management.	\$530,000	-

Project Number Legend:

AF-XX - Refers to Athletic Field projects identified in Figure 5.9
AP-XX - Refers to Amphitheater projects identified in Figure 5.10
CC-XX - Refers to Community Center projects identified in Figure 5.11
CG-XX - Refers to Community Garden projects identified in Figure 5.12

CP-XX - Refers to Community Park projects identified in Figure 5.13
DP-XX - Refers to Dog Park projects identified in Figure 5.14
GC-XX - Refers to Golf Course projects identified in Figure 5.15
NP-XX - Refers to Neighborhood Park projects identified in Figure 5.16

PC-XX - Refers to Pickleball Court projects identified in Figure 5.17
PG-XX - Refers to Playground projects identified in Figure 5.18
SP-XX - Refers to School Park projects identified in Figure 5.19
SPS-XX - Refers to Splash Pad projects identified in Figure 5.20

Figure A.1 - Prioritized Projects (Continued)

PHASE 1 PRIORITIZED PROJECTS					
Project Rank	Project Number	Project Name	Project Description	Order of Magnitude Planning Level Probable Costs	Order of Magnitude Annual Operations and Maintenance Costs
6	-	Community Center	Expand community center to 50,000 - 55,000 sf. and parking.	\$40,000,000	\$1,750,000
6	-	Minsky Gym	Renovate and expand gymnasium to 30,000 - 40,000 sf to include multi-purpose rooms for programming and activities.	\$30,000,000	\$1,225,000
6	CP-02	Torino Community Park - Future Phases	Torino Community Park - Phase 2.	\$36,000,000	\$450,000
6	CP-03	Tradition Community Park - Future Phases	Tradition Community Park - Phase 2.	\$36,000,000	\$450,000
6	SP-02	Bayshore Elementary School	Light 1 rectangle field - 300'x150'. (One of seven rectangle fields needed)	\$500,000	\$15,000
6	SP-04	West Gate K-8 School	Light 1 rectangle field - 300'x170'. (One of seven rectangle fields needed)	\$500,000	\$15,000
6	SP-08	Palm Pointe Educational Research School	Light 1 rectangle field - 340'x200'. (One of seven rectangle fields needed)	\$500,000	\$15,000
6	SP-09	Palm Pointe Educational Research School	Light 1 rectangle field - 280'x190'. (One of seven rectangle fields needed)	\$500,000	\$15,000
6	SP-10	Renaissance Charter School at Tradition	Light 1 rectangle field - 220'x150'. (One of seven rectangle fields needed)	\$500,000	\$15,000
6	SP-11	Southern Oak Middle School	Light 1 rectangle field - 300'x170', multi-purpose diamond 200'x60'. (One of seven rectangle fields needed)	\$1,000,000	\$30,000
6	SP-13	St. Lucie West Centennial High School	Light 1 rectangle field - 340'x200'. (One of seven rectangle fields needed)	\$500,000	\$15,000
6	SP-15	St. Lucie West Centennial High School	Light 1 rectangle field - 350'x180'. (One of seven rectangle fields needed)	\$500,000	\$15,000
6	SP-17	Treasure Coast High School	Light 1 rectangle field - 340'x200'. (One of seven rectangle fields needed)	\$500,000	\$15,000
6	SP-19	Treasure Coast High School	Light 1 rectangle field - 340'x200'. (One of seven rectangle fields needed)	\$500,000	\$15,000
7	-	McChesney Park	Improve turf management.	\$870,000	-
7	-	Whispering Pines Park	Improve sports lighting and site lighting	\$450,000	\$13,500
8	AF-01	New Athletic Facilities - Diamond	New Athletic Facilities - Diamond (Included in the CP-01 Community Park Project).	-	-
8	AF-01	New Athletic Facilities - Rectangle Fields	New Athletic Facilities - Rectangle Fields (Included in the CP-01 Community Park Project).	-	-
8	AF-02	Tradition Park - New Athletic Facilities - Rectangle Fields	Tradition Park - New Athletic Facilities - Rectangle Fields (Included in the CP-03 Tradition Regional Park Future Phase).	-	-
8	AF-03	New Athletic Facilities - Diamond	New Athletic Facilities - Diamond (Included in the CP-04 Community Park Project).	-	-
8	SP-01	Manatee Elementary School	1 rectangle field - 280'x190', multi-purpose diamond 200'x60'. (One of seven rectangle fields needed)	\$500,000	\$15,000
8	SP-05	North Port K-8 School	1 rectangle field - 350'x240', multi-purpose diamond 300'x90'. (One of seven rectangle fields needed)	\$1,000,000	\$30,000

Project Number Legend:

AF-XX - Refers to Athletic Field projects identified in Figure 5.9
AP-XX - Refers to Amphitheater projects identified in Figure 5.10
CC-XX - Refers to Community Center projects identified in Figure 5.11
CG-XX - Refers to Community Garden projects identified in Figure 5.12

CP-XX - Refers to Community Park projects identified in Figure 5.13
DP-XX - Refers to Dog Park projects identified in Figure 5.14
GC-XX - Refers to Golf Course projects identified in Figure 5.15
NP-XX - Refers to Neighborhood Park projects identified in Figure 5.16

PC-XX - Refers to Pickleball Court projects identified in Figure 5.17
PG-XX - Refers to Playground projects identified in Figure 5.18
SP-XX - Refers to School Park projects identified in Figure 5.19
SPS-XX - Refers to Splash Pad projects identified in Figure 5.20

Figure A.1 - Prioritized Projects (Continued)

PHASE 1 PRIORITIZED PROJECTS					
Project Rank	Project Number	Project Name	Project Description	Order of Magnitude Planning Level Probable Costs	Order of Magnitude Annual Operations and Maintenance Costs
8	SP-06	Oak Hammock K-8 School	1 rectangle field - 350'x200', multi-purpose diamond 200'x60'. (One of seven rectangle fields needed)	\$1,000,000	\$30,000
8	SP-18	Treasure Coast High School	1 softball - 230'x60'. (One of seven diamond fields needed)	\$500,000	\$15,000
8	SP-20	Treasure Coast High School	1 softball - 380'x90'. (One of seven diamond fields needed)	\$500,000	\$15,000
8	SP-23	Port St. Lucie High School	1 softball - 350'x90'. (One of seven diamond fields needed)	\$500,000	\$15,000
9	NP-15	Stormwater Pond Park	Develop Storm Water Pond Park. (2 Acres of Publicly owned land available in two different sites)	\$2,400,000	\$30,000
9	NP-16	Stormwater Pond Park	Develop Stormwater Pond Park. (Publicly owned land available)	\$5,400,000	\$67,500
9	NP-17	Stormwater Pond Park	Develop Stormwater Pond Park. (Publicly owned land available)	\$3,600,000	\$45,000
9	NP-18	Stormwater Pond Park	Develop Stormwater Pond Park. (Publicly owned land available)	\$9,000,000	\$112,500
9	NP-24	Neighborhood Park	Develop Neighborhood Park. (Publicly owned land available)	\$12,000,000	\$150,000
9	NP-25	Stormwater Pond Park	Develop Stormwater Pond Park (Publicly owned land available)	\$4,200,000	\$52,500
10	AF-02	Tradition Park - New Athletic Facilities - Diamond	Tradition Park - New Athletic Facilities - Diamond Fields. (Included in the CP-03 Tradition Regional Park Future Phase)	-	-
10	AF-03	New Athletic Facilities - Rectangle Fields	New Athletic Facilities - Rectangle Fields. (Included in the CP-04 Community Park Project)	-	-
10	AF-04	Torino New Athletic Facilities - Diamond Fields	Torino New Athletic Facilities - Diamond Fields. (Included in the CP-02 Torino Regional Park Future Phase)	-	-
10	AF-04	Torino New Athletic Facilities - Rectangle Fields	Torino New Athletic Facilities - Rectangle Fields. (Included in the CP-02 Torino Regional Park Future Phase)	-	-
10	AF-05	Sportsman's Park - New Athletic Facilities - Diamond	Sportsman's Park - New Athletic Facilities - Diamond Field. (Included Sportsman's Park Phase 1)	-	-
10	AF-05	Sportsman's Park New Athletic Facilities - Rectangle Fields	Sportsman's Park New Athletic Facilities - Rectangle Fields. (Included Sportsman's Park Phase 1)	-	-
10	CC-02	New Community Center	New Community Center with Gymnasium.	\$28,000,000	\$1,225,000
10	NP-01	New Neighborhood Park	Develop Neighborhood Park. (Land provided and Park built by Developer as part of Residential Development)	-	-
10	NP-02	New Neighborhood Park	Develop Neighborhood Park. (Land provided and Park built by Developer as part of Residential Development)	-	-
10	NP-03	New Neighborhood Park	Develop Neighborhood Park. (Land provided and Park built by Developer as part of Residential Development)	-	-
10	NP-04	New Neighborhood Park	Develop Neighborhood Park. (Land provided and Park built by Developer as part of Residential Development)	-	-
10	NP-05	New Neighborhood Park	Develop Neighborhood Park. (Land provided and Park built by Developer as part of Residential Development)	-	-
10	NP-06	New Neighborhood Park	Develop Neighborhood Park. (Land provided and Park built by Developer as part of Residential Development)	-	-

Project Number Legend:

AF-XX - Refers to Athletic Field projects identified in Figure 5.9
AP-XX - Refers to Amphitheater projects identified in Figure 5.10
CC-XX - Refers to Community Center projects identified in Figure 5.11
CG-XX - Refers to Community Garden projects identified in Figure 5.12

CP-XX - Refers to Community Park projects identified in Figure 5.13
DP-XX - Refers to Dog Park projects identified in Figure 5.14
GC-XX - Refers to Golf Course projects identified in Figure 5.15
NP-XX - Refers to Neighborhood Park projects identified in Figure 5.16

PC-XX - Refers to Pickleball Court projects identified in Figure 5.17
PG-XX - Refers to Playground projects identified in Figure 5.18
SP-XX - Refers to School Park projects identified in Figure 5.19
SPS-XX - Refers to Splash Pad projects identified in Figure 5.20

Figure A.1 - Prioritized Projects (Continued)

PHASE 1 PRIORITIZED PROJECTS					
Project Rank	Project Number	Project Name	Project Description	Order of Magnitude Planning Level Probable Costs	Order of Magnitude Annual Operations and Maintenance Costs
10	NP-07	New Neighborhood Park	Develop Neighborhood Park. (Land provided and Park built by Developer as part of Residential Development)	-	-
10	NP-08	New Neighborhood Park	Develop Neighborhood Park. (Land provided and Park built by Developer as part of Residential Development)	-	-
10	NP-09	New Neighborhood Park	Develop Neighborhood Park. (Land provided and Park built by Developer as part of Residential Development)	-	-
10	NP-21	New Neighborhood Park	Develop Neighborhood Park. (Publicly owned land available)	\$12,000,000	\$150,000
10	NP-22	New Neighborhood Park	Develop Neighborhood Park. (Publicly owned land available)	\$12,000,000	\$150,000
11	-	The Reserve North	Add formal on-street, off-street parking area, nature kiosk, interpretive signage/ wayfinding, nature trails, water overlooks, restrooms furnishings, invasive plant removal, and selective clearing. (Site is 94 total acres, develop 25% of the site)	\$13,800,000	\$172,500
11	-	The Reserve South	Add formal on-street, off-street parking area, nature kiosk, interpretive signage/ wayfinding, nature trails, water overlooks, restrooms furnishings, invasive plant removal, and selective clearing.	\$13,720,000	\$171,450
11	-	Del Rio North & South	Add formal on-street, off-street parking area, nature kiosk, interpretive signage/ wayfinding, nature trails, water overlooks, restrooms furnishings, invasive plant removal, and selective clearing. (Site is 35 acres, develop 50% of the site)	\$10,200,000	\$127,500
11	-	Torino Regional Park Preserve Area	Add formal on-street, off-street parking area, nature kiosk, interpretive signage/ wayfinding, nature trails, water overlooks, restrooms furnishings, invasive plant removal, and selective clearing. (Included in Phase 1 of Torino Regional Park)	-	-
11	CP-04	New Community Park	Develop Community Park. (Build-Out Opinion of Probable Cost - 30 Acres = \$45M)	\$22,500,000	\$225,000
12	CG-01	New Community Garden	New Community Garden.	\$50,000	\$3,600
12	CG-02	New Community Garden	New Community Garden.	\$50,000	\$3,600
12	CG-03	New Community Garden	New Community Garden.	\$50,000	\$3,600
12	CG-04	New Community Garden	New Community Garden.	\$50,000	\$3,600
12	CG-07	New Community Garden	New Community Garden.	\$50,000	\$3,600
12	GC-01	New Golf Course	New Golf Course.	\$11,250,000	\$4,500,000
12	NP-10	New Neighborhood Park	Develop Neighborhood Park. (Land provided and Park built by Developer as part of Residential Development)	-	-
12	NP-11	New Neighborhood Park	Develop Neighborhood Park. (Land provided and Park built by Developer as part of Residential Development)	-	-
12	NP-12	New Neighborhood Park	Develop Neighborhood Park. (Land provided and Park built by Developer as part of Residential Development)	-	-
12	NP-13	New Neighborhood Park	Develop Neighborhood Park. (School Park - Southern Oaks Middle School)	\$9,600,000	\$60,000
12	NP-14	New Neighborhood Park	Develop Neighborhood Park. (5 acre publicly owned parcel)	\$6,000,000	\$37,500
12	NP-20	New Neighborhood Park - Riverland Site 2	Develop Neighborhood Park - Riverland Site 2.(Site is 40 acres, develop 25% of the site)	\$12,000,000	\$150,000
13	-	O.L. Peacock Sr. Park	Implement additional Park Master Plan Phases.	\$4,500,000	\$15,000

Project Number Legend:

AF-XX - Refers to Athletic Field projects identified in Figure 5.9
AP-XX - Refers to Amphitheater projects identified in Figure 5.10
CC-XX - Refers to Community Center projects identified in Figure 5.11
CG-XX - Refers to Community Garden projects identified in Figure 5.12

CP-XX - Refers to Community Park projects identified in Figure 5.13
DP-XX - Refers to Dog Park projects identified in Figure 5.14
GC-XX - Refers to Golf Course projects identified in Figure 5.15
NP-XX - Refers to Neighborhood Park projects identified in Figure 5.16

PC-XX - Refers to Pickleball Court projects identified in Figure 5.17
PG-XX - Refers to Playground projects identified in Figure 5.18
SP-XX - Refers to School Park projects identified in Figure 5.19
SPS-XX - Refers to Splash Pad projects identified in Figure 5.20

Figure A.1 - Prioritized Projects (Continued)

PHASE 1 PRIORITIZED PROJECTS					
Project Rank	Project Number	Project Name	Project Description	Order of Magnitude Planning Level Probable Costs	Order of Magnitude Annual Operations and Maintenance Costs
13	PC-01	New Pickleball Courts	New Pickleball Courts.	\$80,000	\$16,000
13	PC-02	New Pickleball Courts	New Pickleball Courts.	\$80,000	\$16,000
13	PC-03	New Pickleball Courts	New Pickleball Courts.	\$80,000	\$16,000
14	-	Midport Lake	Implement proposed Port District Master Plan improvements, Fitness Equipment.	\$7,110,000	\$15,000
14	-	Tom Hooper Family Park	Implement proposed Port District Master Plan improvements.	\$7,200,000	\$7,500
14	-	Lyngate Park & Dog Park	Implement proposed Port District Master Plan improvements.	\$4,800,000	\$240,000
14	-	Swan Park	Providing netting to separate fields for safety.	\$20,000	-
15	-	Harborview Park	Add 8'-wide x 2,000' perimeter trail walking loop and add baseline amenities and furnishings.	\$280,000	\$6,000
15	-	Loyalty Park	Add 8'-wide x 800' perimeter trail walking loop and add outdoor fitness equipment.	\$150,000	\$2,500
15	-	Wilderness Park	Extend 8'-wide x 5,300'multi-purpose trail.	\$650,000	\$15,000
15	-	Fred Cook Park	Add perimeter walking trail loop - 8'-wide x 2,000'.	\$250,000	\$6,000
15	-	River Place Park	Add perimeter trail walking loop - 8'x 900'.	\$130,000	\$2,300
15	-	Rotary Park	Add perimeter trail walking loop - 8' x 2,200'.	\$280,000	\$6,000
15	-	Turtle Run Park	Add perimeter trail walking loop - 8' x 2,200'.	\$280,000	\$6,000
15	-	Whispering Pines Park	Improve 6 baseball field, 6 dug out sets, and 3 sets of batting cages.	\$600,000	-
15	-	Pioneer Park	Implement proposed Port District Master Plan improvements. (Public-Private Partnership)	-	-
15	-	The Saints at Port St. Lucie Golf Course	Improve clubhouse building interior finishes, furnishings, and equipment.	\$9,080,000	-
16	-	Doat Street Park	Add perimeter trail walking loop - 8'x 1,500' and add outdoor fitness equipment.	\$250,000	\$4,300
16	-	Charles E. Ray Park	Add perimeter walking trail loop - 8' x 2,500', improve walkways (5' x 850') and parking lot (25,000 sf).	\$500,000	\$16,000
16	-	Sandhill Crane Park	Improve sports lighting and site lighting.	\$530,000	-
16	-	The Saints at Port St. Lucie Golf Course	Replace dilapidated maintenance shed with new maintenance shed and golf cart barn.	\$200,000	-
16	-	Veterans Memorial Park	Implement proposed Port District Master Plan improvements.	\$2,800,000	\$15,000
16	-	Veterans Memorial Park	Expand park and add a large pavilion and stadium style seating for large events. (Improvements included in Port District Master Plan)	-	-
16	PG-11	New Playground	New "Wow" Playground.	\$1,500,000	\$40,000
17	-	Apache Park	Develop into Neighborhood Park.	\$10,430,000	\$208,500

Project Number Legend:

AF-XX - Refers to Athletic Field projects identified in Figure 5.9
AP-XX - Refers to Amphitheater projects identified in Figure 5.10
CC-XX - Refers to Community Center projects identified in Figure 5.11
CG-XX - Refers to Community Garden projects identified in Figure 5.12

CP-XX - Refers to Community Park projects identified in Figure 5.13
DP-XX - Refers to Dog Park projects identified in Figure 5.14
GC-XX - Refers to Golf Course projects identified in Figure 5.15
NP-XX - Refers to Neighborhood Park projects identified in Figure 5.16

PC-XX - Refers to Pickleball Court projects identified in Figure 5.17
PG-XX - Refers to Playground projects identified in Figure 5.18
SP-XX - Refers to School Park projects identified in Figure 5.19
SPS-XX - Refers to Splash Pad projects identified in Figure 5.20

Figure A.1 - Prioritized Projects (Continued)

PHASE 1 PRIORITIZED PROJECTS					
Project Rank	Project Number	Project Name	Project Description	Order of Magnitude Planning Level Probable Costs	Order of Magnitude Annual Operations and Maintenance Costs
17	-	Jaycee Park & YMCA	Renovate park as a Neighborhood Park.	\$7,440,000	-
17	-	Veterans Park @ Rivergate	Add nature trails, selective clearing, and invasive plant removal. (Site is 21.50 acres, develop 50%)	\$6,000,000	\$75,000
17	CG-05	New Community Garden	New Community Garden.	\$50,000	\$3,600
17	CG-06	New Community Garden	New Community Garden.	\$50,000	\$3,600
17	NP-23	New Neighborhood Park	Develop Neighborhood Park.	\$10,400,000	\$120,000
17	NP-26	New Neighborhood Park	Develop Neighborhood Park.	\$10,400,000	\$120,000
17	NP-27	New Neighborhood Park	Develop Neighborhood Park.	\$10,400,000	\$120,000
18	-	Elks Friendship Park	Renovate park as a Neighborhood Park.	\$4,200,000	-
18	-	Kiwanis Park	Renovate park as a Neighborhood Park.	\$4,560,000	-
18	-	Rotary Park	Improve softball field and batting cages.	\$80,000	-
18	AP-01	New Amphitheater	New Amphitheater.	\$6,000,000	\$600,000
18	PG-03	New Playground	New Playground.	\$850,000	\$20,000
18	PG-19	New Playground	New Playground.	\$850,000	\$20,000
18	PG-21	New Playground	New Playground.	\$850,000	\$20,000
18	PG-29	New Playground	New Playground.	\$850,000	\$20,000
19	-	Mariposa Cane Slough Preserve	Add nature trails, selective clearing, and invasive plant removal. (Site is 19.8 acres; develop 50%)	\$5,640,000	\$70,500
20	PG-12	New Playground	New Playground.	\$850,000	\$20,000
20	PG-15	New Playground	New Playground.	\$850,000	\$20,000
20	PG-16	New Playground	New Playground.	\$850,000	\$20,000
20	PG-17	New Playground	New Playground.	\$850,000	\$20,000
20	PG-20	New Playground	New Playground.	\$850,000	\$20,000
20	PG-22	New Playground	New Playground.	\$850,000	\$20,000
20	PG-23	New Playground	New Playground.	\$850,000	\$20,000
20	PG-24	New Playground	New Playground.	\$850,000	\$20,000
20	PG-25	New Playground	New Playground.	\$850,000	\$20,000
20	PG-26	New Playground	New Playground.	\$850,000	\$20,000

Project Number Legend:

AF-XX - Refers to Athletic Field projects identified in Figure 5.9
AP-XX - Refers to Amphitheater projects identified in Figure 5.10
CC-XX - Refers to Community Center projects identified in Figure 5.11
CG-XX - Refers to Community Garden projects identified in Figure 5.12

CP-XX - Refers to Community Park projects identified in Figure 5.13
DP-XX - Refers to Dog Park projects identified in Figure 5.14
GC-XX - Refers to Golf Course projects identified in Figure 5.15
NP-XX - Refers to Neighborhood Park projects identified in Figure 5.16

PC-XX - Refers to Pickleball Court projects identified in Figure 5.17
PG-XX - Refers to Playground projects identified in Figure 5.18
SP-XX - Refers to School Park projects identified in Figure 5.19
SPS-XX - Refers to Splash Pad projects identified in Figure 5.20

Figure A.1 - Prioritized Projects (Continued)

PHASE 1 PRIORITIZED PROJECTS					
Project Rank	Project Number	Project Name	Project Description	Order of Magnitude Planning Level Probable Costs	Order of Magnitude Annual Operations and Maintenance Costs
20	PG-28	New Playground	New Playground.	\$850,000	\$20,000
20	PG-30	New Playground	New Playground.	\$850,000	\$20,000
20	PG-31	New Playground	New Playground.	\$850,000	\$20,000
21	-	Gulfstream Park	Add nature trails, selective clearing, and invasive plant removal.	\$250,000	\$37,500
21	-	Wilderness Park	Add nature trails, selective clearing, and invasive plant removal.	\$400,000	\$75,000
21	-	Apache Park	Add nature trails, water overlook, selective clearing, and invasive plant removal.	\$400,000	\$30,000
21	-	Fred Cook Park	Add nature trails, selective clearing, and invasive plant removal.	\$150,000	\$15,000
21	-	Jaycee Park & YMCA	Add nature trails, selective clearing, and invasive plant removal.	\$150,000	\$16,500
21	-	Pineapple Snook Park	Add multi-generational interactive area.	\$500,000	\$7,500
21	-	Sandpiper Bay Park	Add nature trails, water overlook, selective clearing, and invasive plant removal.	\$400,000	\$27,750
21	-	Whispering Pines Park	Improve volleyball court.	\$40,000	-
21	-	Oak Hammock Park	Add nature trails, selective clearing, and invasive plant removal.	\$850,000	\$225,000
22	-	Whispering Pines Park	Improve landscaping, walking, parking, and fencing.	\$250,000	-
22	-	Ian T Zook Park	Add nature trails, selective clearing, and invasive plant removal.	\$300,000	\$52,500
22	-	McCarty Range Preserve	Add nature trails, selective clearing, and invasive plant removal.	\$1,000,000	\$697,500
22	SPS-01	New Splash Pad	New Splash Pad.	\$1,600,000	\$50,000
22	SPS-02	New Splash Pad	New Splash Pad.	\$1,600,000	\$50,000
22	SPS-03	New Splash Pad	New Splash Pad.	\$1,600,000	\$50,000
22	SPS-05	New Splash Pad	New Splash Pad.	\$1,600,000	\$50,000
21	-	River Place Park	Add multi-generational interactive area.	\$500,000	\$7,500
21	-	Rotary Park	Add multi-generational interactive area.	\$500,000	\$7,500
21	-	Lyngate Park & Dog Park	Improve sand volleyball court.	\$40,000	-
21	-	Sandhill Crane Park	Improve dugouts.	\$50,000	-
21	PC-05	New Pickleball Courts	New Pickleball Courts.	\$100,000	\$16,000
21	PG-01	New Playground	New Playground.	\$850,000	\$20,000
21	PG-02	New Playground	New Playground.	\$850,000	\$20,000

Project Number Legend:

AF-XX - Refers to Athletic Field projects identified in Figure 5.9
AP-XX - Refers to Amphitheater projects identified in Figure 5.10
CC-XX - Refers to Community Center projects identified in Figure 5.11
CG-XX - Refers to Community Garden projects identified in Figure 5.12

CP-XX - Refers to Community Park projects identified in Figure 5.13
DP-XX - Refers to Dog Park projects identified in Figure 5.14
GC-XX - Refers to Golf Course projects identified in Figure 5.15
NP-XX - Refers to Neighborhood Park projects identified in Figure 5.16

PC-XX - Refers to Pickleball Court projects identified in Figure 5.17
PG-XX - Refers to Playground projects identified in Figure 5.18
SP-XX - Refers to School Park projects identified in Figure 5.19
SPS-XX - Refers to Splash Pad projects identified in Figure 5.20

Figure A.1 - Prioritized Projects (Continued)

PHASE 1 PRIORITIZED PROJECTS					
Project Rank	Project Number	Project Name	Project Description	Order of Magnitude Planning Level Probable Costs	Order of Magnitude Annual Operations and Maintenance Costs
21	PG-04	New Playground	New Playground.	\$850,000	\$20,000
21	PG-05	New Playground	New Playground.	\$850,000	\$20,000
21	PG-06	New Playground	New Playground.	\$850,000	\$20,000
21	PG-07	New Playground	New Playground.	\$850,000	\$20,000
21	PG-08	New Playground	New Playground.	\$850,000	\$20,000
21	PG-09	New Playground	New Playground.	\$850,000	\$20,000
21	PG-13	New Playground	New Playground.	\$850,000	\$20,000
21	PG-14	New Playground	New Playground.	\$850,000	\$20,000
21	PG-18	New Playground	New Playground.	\$850,000	\$20,000
22	-	Jessica Clinton Park	Add perimeter on-street parking.	\$2,800,000	\$14,000
23	-	Pineapple Snook Park	Add activities, mix-of-uses and things to do such as movable tables and chairs.	\$10,000	\$1,000
23	-	Turtle Run Park	Improve landscaping, walking, and parking.	\$520,000	-
23	-	Turtle Run Park	Add activities, mix-of-uses and things to do such as movable tables and chairs.	\$40,000	\$150,000
23	-	US Submarine Veterans Park	Add activities, mix-of-uses and things to do such as movable tables and chairs and fitness equipment.	\$160,000	\$500
23	-	Woodstork Park	Improve parking.	\$90,000	-
23	-	The Saints at Port St. Lucie Golf Course	Improve signage.	\$20,000	-
23	-	Veterans Park @ Rivergate	Improve boat ramp.	\$430,000	-
23	-	Mariposa Cane Slough Preserve	Add formal entrance with on-street parking, nature kiosk, interpretive signage/ wayfinding, and furnishings.	\$280,000	\$1,300
23	-	Oak Hammock Park	Improve parking and fencing.	\$330,000	-
23	DP-01	New Dog Park	New Dog Park.	\$250,000	\$2,500
23	PC-04	New Pickleball Courts	New Pickleball Courts.	\$100,000	\$16,000
23	PG-10	New Playground	New Playground.	\$850,000	\$20,000
23	PG-27	New Playground	New Playground.	\$850,000	\$20,000
23	PG-32	New Playground	New Playground.	\$850,000	\$20,000
23	PG-33	New Playground	New Playground.	\$850,000	\$20,000

Project Number Legend:

AF-XX - Refers to Athletic Field projects identified in Figure 5.9
AP-XX - Refers to Amphitheater projects identified in Figure 5.10
CC-XX - Refers to Community Center projects identified in Figure 5.11
CG-XX - Refers to Community Garden projects identified in Figure 5.12

CP-XX - Refers to Community Park projects identified in Figure 5.13
DP-XX - Refers to Dog Park projects identified in Figure 5.14
GC-XX - Refers to Golf Course projects identified in Figure 5.15
NP-XX - Refers to Neighborhood Park projects identified in Figure 5.16

PC-XX - Refers to Pickleball Court projects identified in Figure 5.17
PG-XX - Refers to Playground projects identified in Figure 5.18
SP-XX - Refers to School Park projects identified in Figure 5.19
SPS-XX - Refers to Splash Pad projects identified in Figure 5.20

Figure A.1 - Prioritized Projects (Continued)

PHASE 1 PRIORITIZED PROJECTS					
Project Rank	Project Number	Project Name	Project Description	Order of Magnitude Planning Level Probable Costs	Order of Magnitude Annual Operations and Maintenance Costs
24	-	Jessica Clinton Park	Improve concession building.	\$400,000	-
24	-	Sandhill Crane Park	Improve parking.	\$560,000	-
24	-	Swan Park	Install restrooms for field 3.	\$500,000	\$36,000
24	-	Whispering Pines Park	Improve concession building.	\$2,400,000	-
24	-	Whispering Pines Park	Improve storage building and storage shed.	\$600,000	-
25	-	Gulfstream Park	Add formal entrance with on-street parking, nature kiosk, interpretive signage/ wayfinding, and furnishings.	\$170,000	\$1,000
25	-	Wilderness Park	Add formal entrance with off-street parking, nature kiosk, interpretive signage/ wayfinding, and furnishings.	\$470,000	\$2,500
25	-	Apache Park	Add formal entrance with off-street parking area, on-street parking, nature kiosk, interpretive signage/ wayfinding, and furnishings.	\$300,000	\$1,500
25	-	Sandpiper Bay Park	Add formal entrance with on-street parking area, on-street parking, nature kiosk, interpretive signage/ wayfinding, and furnishings.	\$170,000	\$1,000
25	-	Turtle Run Park	Replace pavilion, playground, and add playground shade structure.	\$790,000	-
25	-	Lyngate Park & Dog Park	Replace site lighting.	\$330,000	-
25	-	Whispering Pines Park	Improve pavilions.	\$50,000	-
25	-	Oak Hammock Park	Add formal entrance on east side of the park with on-street parking, nature kiosk, interpretive signage/ wayfinding, camping, and furnishings.	\$130,000	\$1,100
25	-	Community Center	Improve site lighting.	\$400,000	-
25	-	New Dog Park	New Dog Park.	\$250,000	\$2,500
26	-	Lyngate Park & Dog Park	Improve racquetball courts.	\$20,000	-
26	-	Swan Park	Install shade for bleachers.	\$240,000	\$6,000
26	-	Ian T Zook Park	Add formal entrance with on-street parking, nature kiosk, interpretive signage/ wayfinding, and furnishings.	\$170,000	\$1,000
26	-	McCarty Range Preserve	Add formal entrance with off-street parking, nature kiosk, interpretive signage/ wayfinding, camping, and furnishings.	\$300,000	\$2,000
27	-	Fred Cook Park	Replace playground and add playground shades.	\$850,000	-
27	-	Jaycee Park & YMCA	Add nature kiosk, interpretive signage/ wayfinding, and furnishings.	\$70,000	\$500
27	-	Ravenswood Racquetball Courts	Improve racquetball courts.	\$20,000	-
27	-	River Place Park	Replace playground and add playground shades.	\$850,000	-
27	-	Woodstork Park	Add interpretive signage.	\$20,000	\$2,500

Project Number Legend:

AF-XX - Refers to Athletic Field projects identified in Figure 5.9
AP-XX - Refers to Amphitheater projects identified in Figure 5.10
CC-XX - Refers to Community Center projects identified in Figure 5.11
CG-XX - Refers to Community Garden projects identified in Figure 5.12

CP-XX - Refers to Community Park projects identified in Figure 5.13
DP-XX - Refers to Dog Park projects identified in Figure 5.14
GC-XX - Refers to Golf Course projects identified in Figure 5.15
NP-XX - Refers to Neighborhood Park projects identified in Figure 5.16

PC-XX - Refers to Pickleball Court projects identified in Figure 5.17
PG-XX - Refers to Playground projects identified in Figure 5.18
SP-XX - Refers to School Park projects identified in Figure 5.19
SPS-XX - Refers to Splash Pad projects identified in Figure 5.20

Figure A.1 - Prioritized Projects (Continued)

PHASE 1 PRIORITIZED PROJECTS					
Project Rank	Project Number	Project Name	Project Description	Order of Magnitude Planning Level Probable Costs	Order of Magnitude Annual Operations and Maintenance Costs
27	-	Lyngate Park & Dog Park	Pave and formalize southern drive isle and parking area.	\$2,250,000	\$142,000
27	-	McChesney Park	Install shade for bleachers.	\$280,000	\$7,000
27	-	Whispering Pines Park	Replace baseline amenities and furnishings.	\$150,000	-
27	-	Oak Hammock Park	Replace playground, add playground shades, and pavilion.	\$900,000	-
27	SPS-04	New Splash Pad	New Splash Pad.	\$1,000,000	\$50,000
27	SPS-06	New Splash Pad	New Splash Pad.	\$1,000,000	\$50,000
28	-	Kiwanis Park	Replace playground and add playground shades.	\$590,000	-
28	-	Ravenswood Racquetball Courts	Add parking and improving landscaping and walkways.	\$450,000	\$500
28	-	River Place Park	Replace restroom.	\$500,000	-
28	-	Rotary Park	Add parking spaces in northern entrance to the park.	\$200,000	\$1,000
28	-	Sandhill Crane Park	Replace playground and add playground shades.	\$380,000	-
28	-	Veterans Park @ Rivergate	Add interpretive signage/ wayfinding, and furnishings.	\$110,000	\$500
28	-	Oak Hammock Park	Replace restroom.	\$500,000	-
29	-	Fred Cook Park	Add nature kiosk, interpretive signage/ wayfinding, and furnishings.	\$70,000	\$500
29	-	Kiwanis Park	Replace restroom.	\$500,000	-
29	-	Kiwanis Park	Replace pavilion.	\$50,000	-
29	-	Jessica Clinton Park	Replace baseline amenities and furnishings.	\$80,000	-
29	-	Lyngate Park & Dog Park	Replace baseline amenities and furnishings.	\$70,000	-
29	-	McCarty Range Preserve	Add restroom.	\$500,000	\$36,000
30	-	Loyalty Park	Add baseline amenities and furnishings.	\$10,000	\$1,000
30	-	Charles E. Ray Park	Add park lighting.	\$1,750,000	\$52,500
30	-	River Place Park	Add baseline amenities and furnishings.	\$40,000	\$4,000
30	-	Rotary Park	Replace baseline amenities and furnishings.	\$40,000	-
30	-	Turtle Run Park	Replace baseline amenities and furnishings.	\$40,000	-
30	-	Woodstork Park	Replace boardwalk and site furnishings in poor conditions.	\$740,000	-

Project Number Legend:

AF-XX - Refers to Athletic Field projects identified in Figure 5.9
AP-XX - Refers to Amphitheater projects identified in Figure 5.10
CC-XX - Refers to Community Center projects identified in Figure 5.11
CG-XX - Refers to Community Garden projects identified in Figure 5.12

CP-XX - Refers to Community Park projects identified in Figure 5.13
DP-XX - Refers to Dog Park projects identified in Figure 5.14
GC-XX - Refers to Golf Course projects identified in Figure 5.15
NP-XX - Refers to Neighborhood Park projects identified in Figure 5.16

PC-XX - Refers to Pickleball Court projects identified in Figure 5.17
PG-XX - Refers to Playground projects identified in Figure 5.18
SP-XX - Refers to School Park projects identified in Figure 5.19
SPS-XX - Refers to Splash Pad projects identified in Figure 5.20

Figure A.8 - Prioritized Projects (Continued)

PHASE 1 PRIORITIZED PROJECTS					
Project Rank	Project Number	Project Name	Project Description	Order of Magnitude Planning Level Probable Costs	Order of Magnitude Annual Operations and Maintenance Costs
30	-	Oak Hammock Park	Replace baseline amenities and furnishings.	\$200,000	-
30	DP-03	New Dog Park	New Dog Park.	\$250,000	\$2,500
31	-	Doat Street Park	Add baseline amenities and furnishings.	\$10,000	\$1,000
32	-	Oak Hammock Park	Replace and expand maintenance building and storage shed.	\$400,000	-
33	-	Sandhill Crane Park	Improve fencing.	\$180,000	-
33	-	Mary Ann Cernuto Park	Improve landscape.	\$340,000	-

Project Number Legend:

- AF-XX - Refers to Athletic Field projects identified in Figure 5.9
- AP-XX - Refers to Amphitheater projects identified in Figure 5.10
- CC-XX - Refers to Community Center projects identified in Figure 5.11
- CG-XX - Refers to Community Garden projects identified in Figure 5.12
- CP-XX - Refers to Community Park projects identified in Figure 5.13
- DP-XX - Refers to Dog Park projects identified in Figure 5.14
- GC-XX - Refers to Golf Course projects identified in Figure 5.15
- NP-XX - Refers to Neighborhood Park projects identified in Figure 5.16
- PC-XX - Refers to Pickleball Court projects identified in Figure 5.17
- PG-XX - Refers to Playground projects identified in Figure 5.18
- SP-XX - Refers to School Park projects identified in Figure 5.19
- SPS-XX - Refers to Splash Pad projects identified in Figure 5.20

Figure 5.9 - Athletic Fields Vision Projects

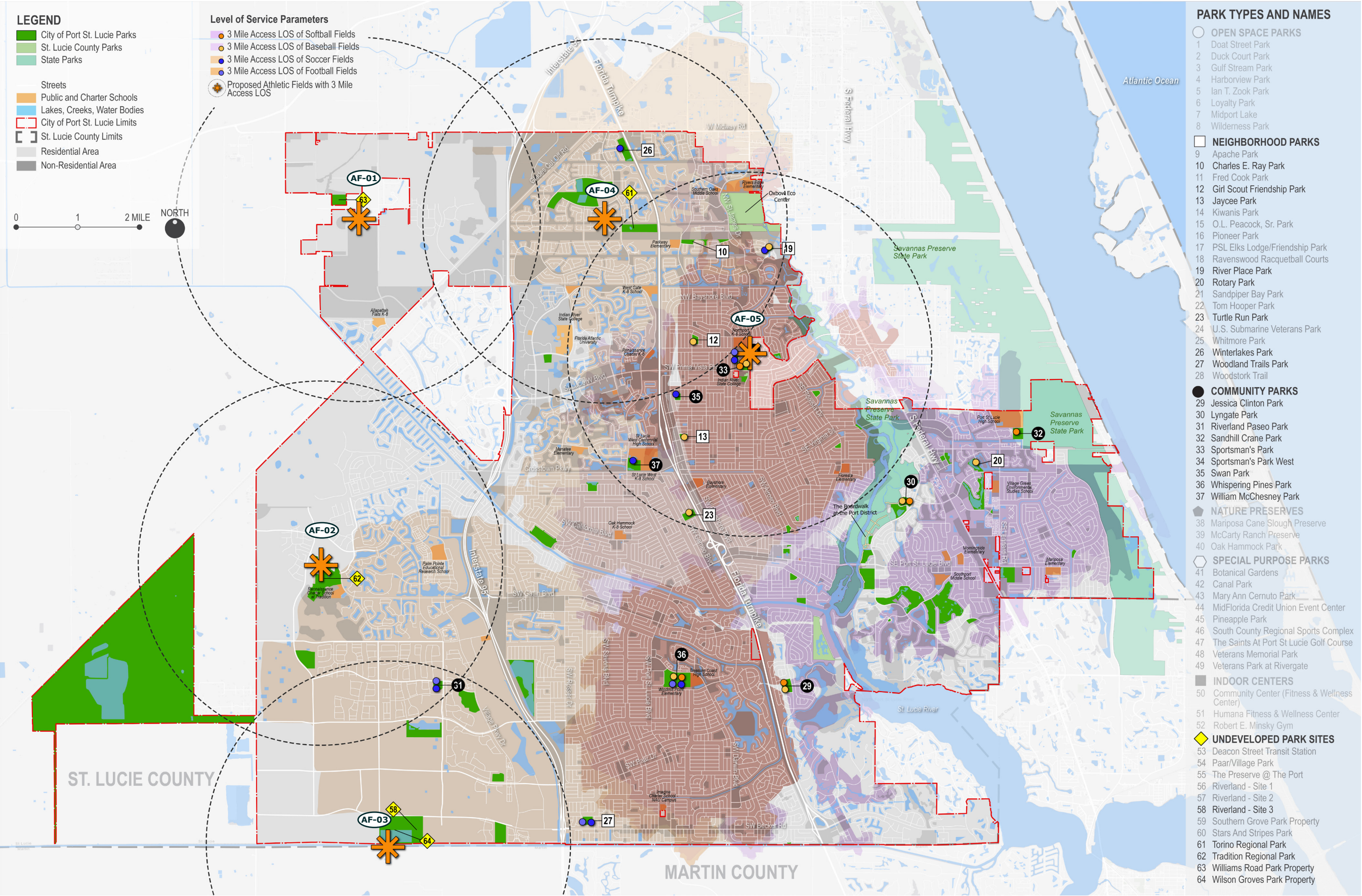


Figure 5.10 - Amphitheater Vision Projects

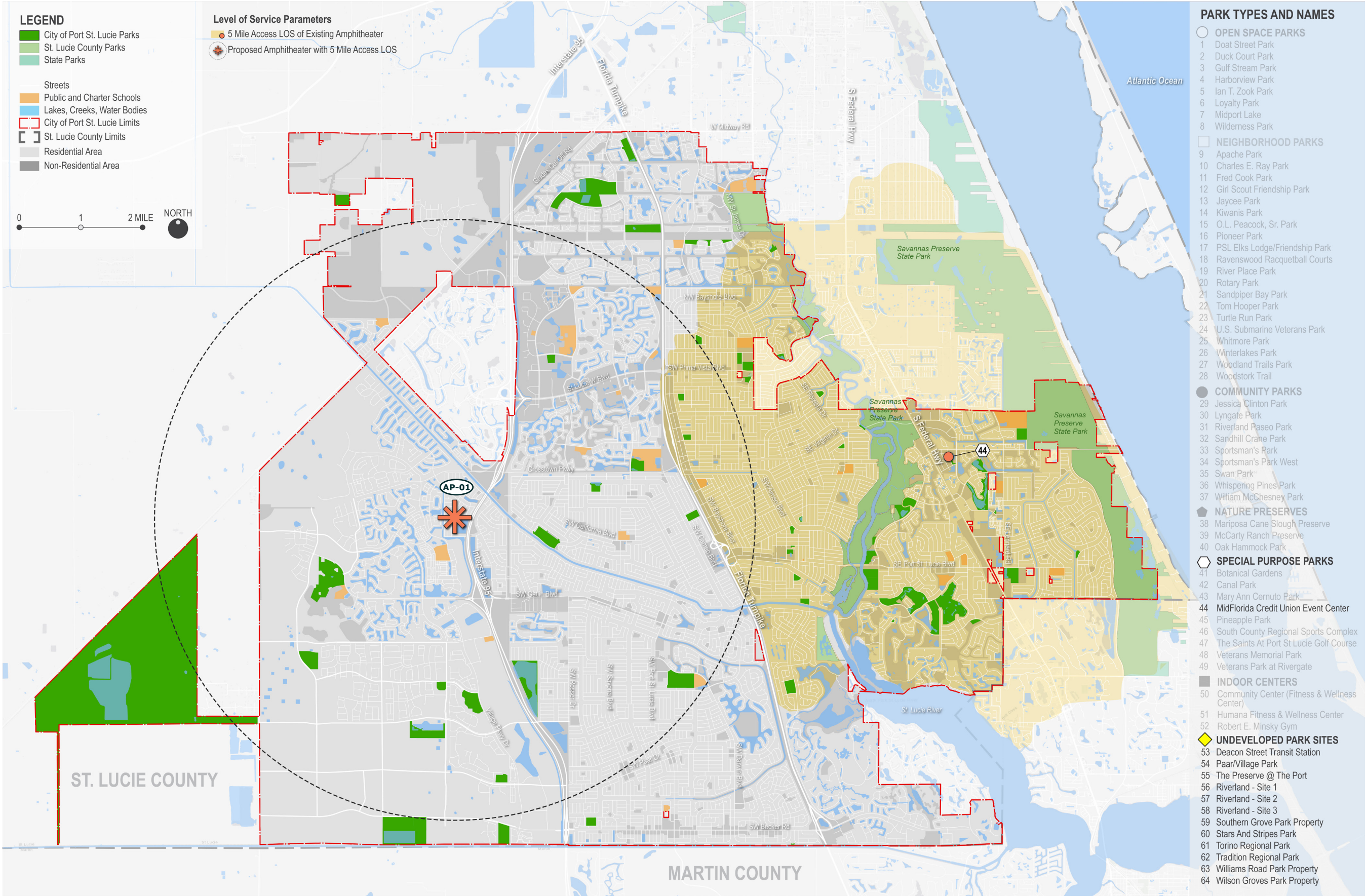


Figure 5.11 - Community Centers and Gymnasium Vision Projects

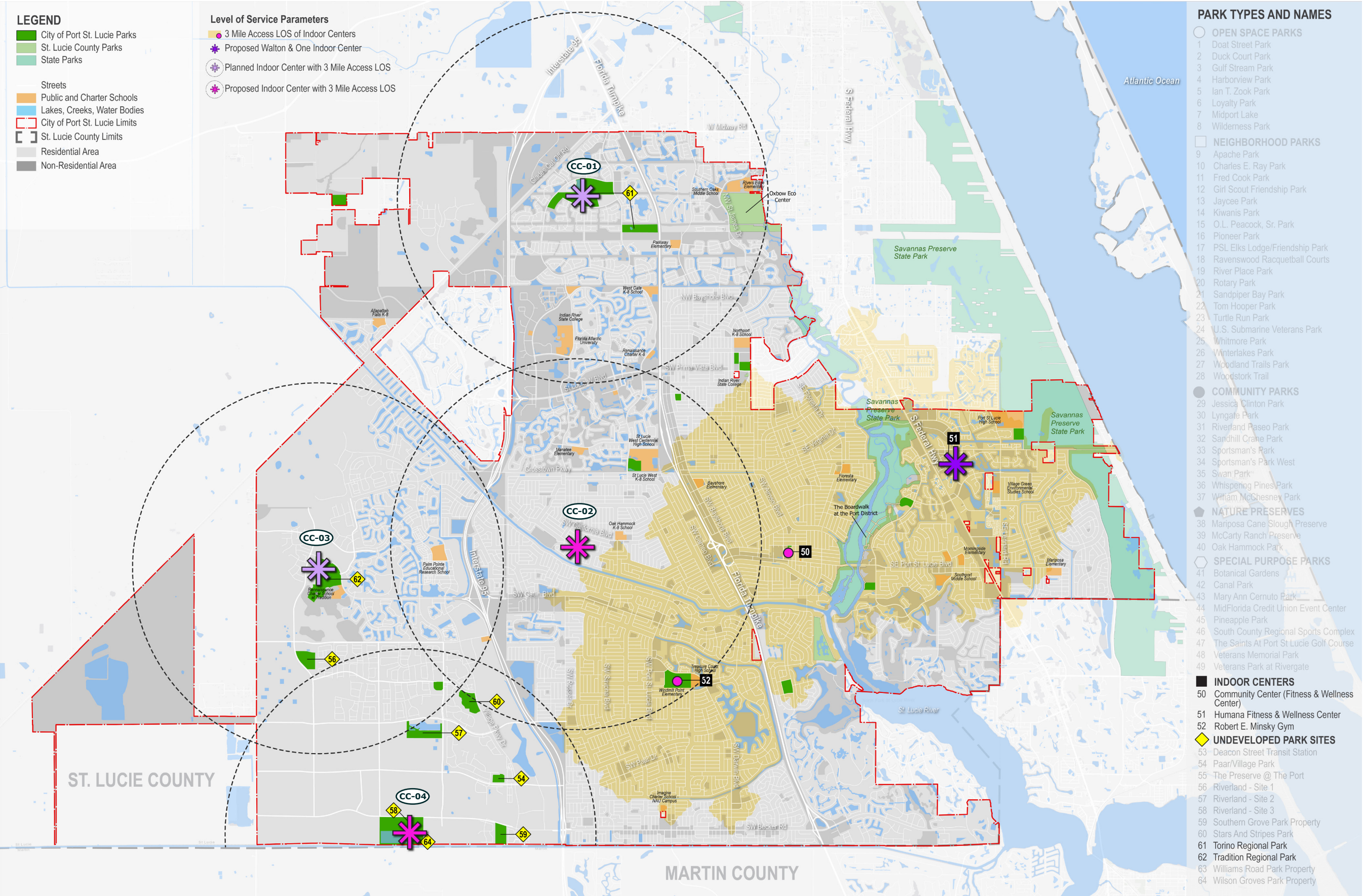


Figure 5.12 - Community Gardens Vision Projects

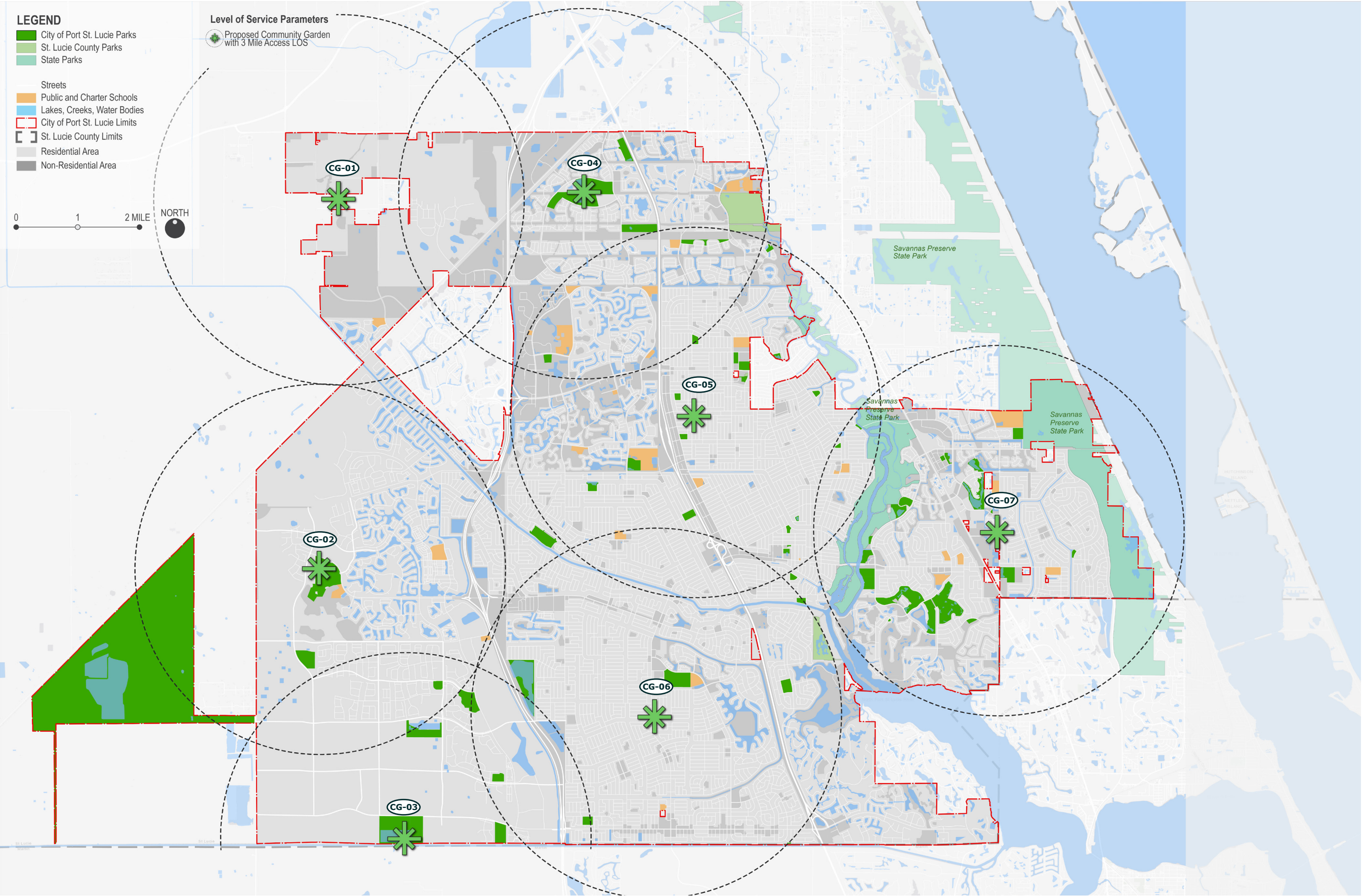


Figure 5.13 - Community/Regional Parks Vision Projects

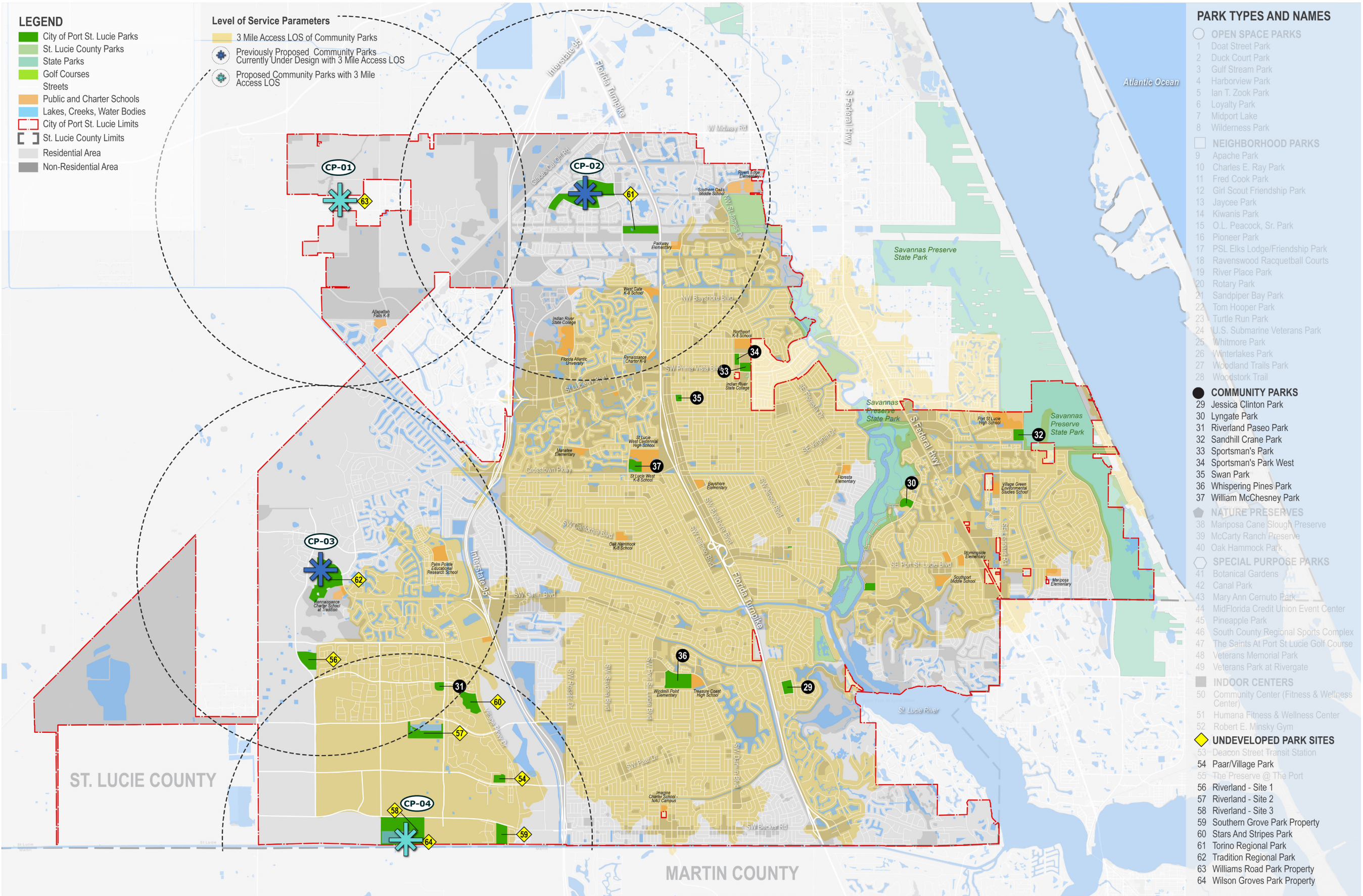


Figure 5.14 - Dog Parks Vision Projects

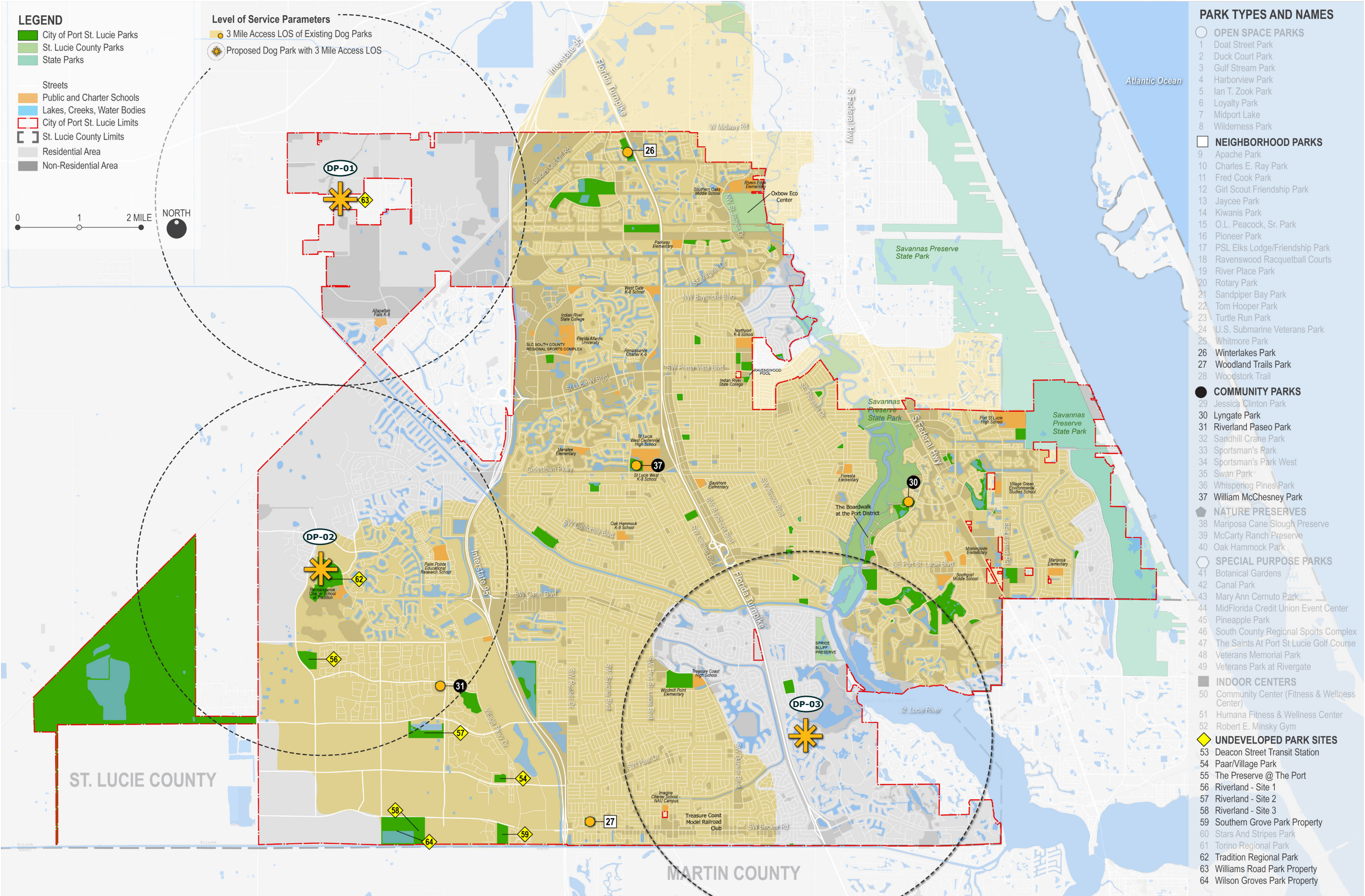


Figure 5.15 - Golf Course Vision Project

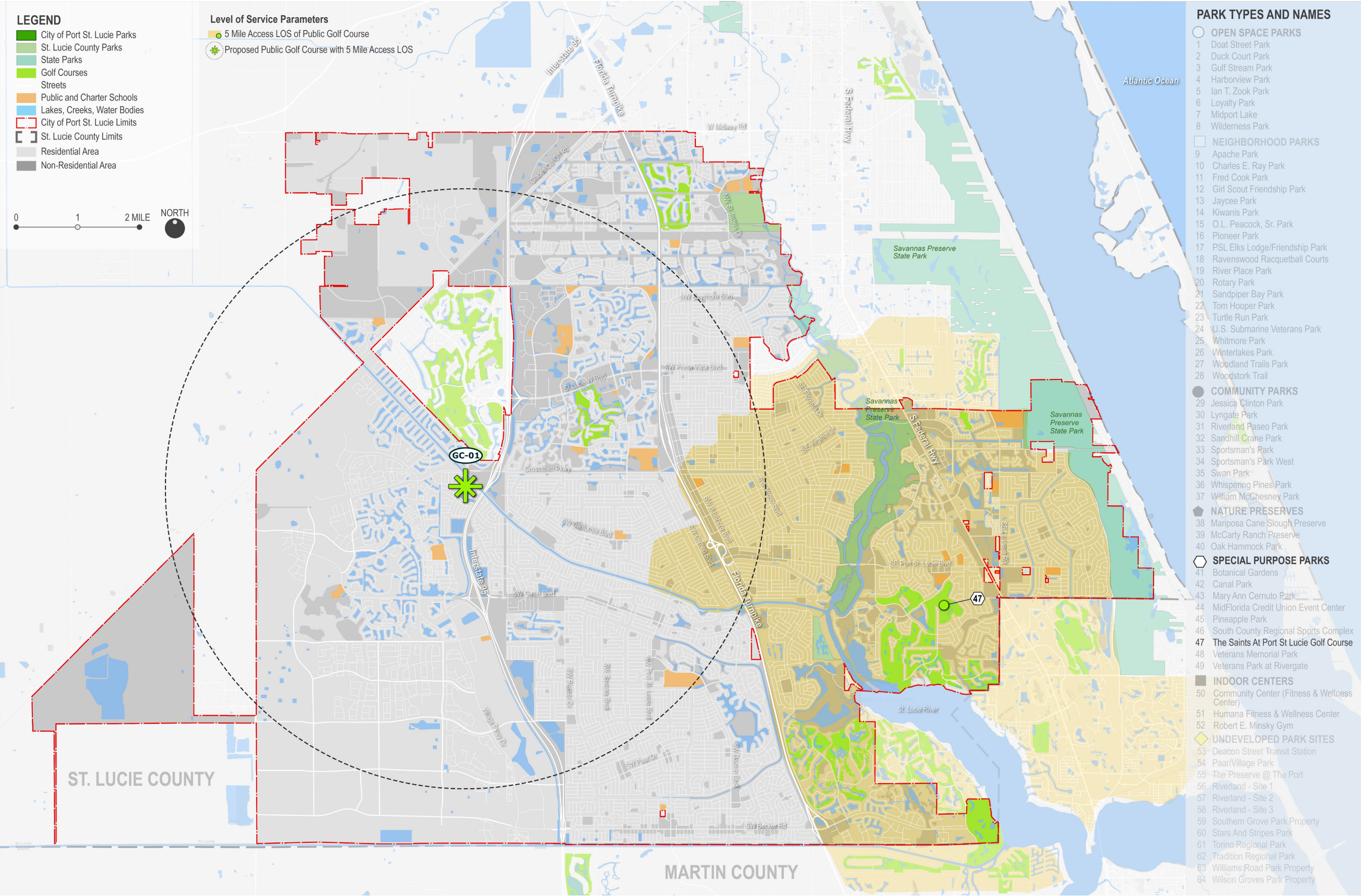


Figure 5.16 - Neighborhood Parks Vision Projects

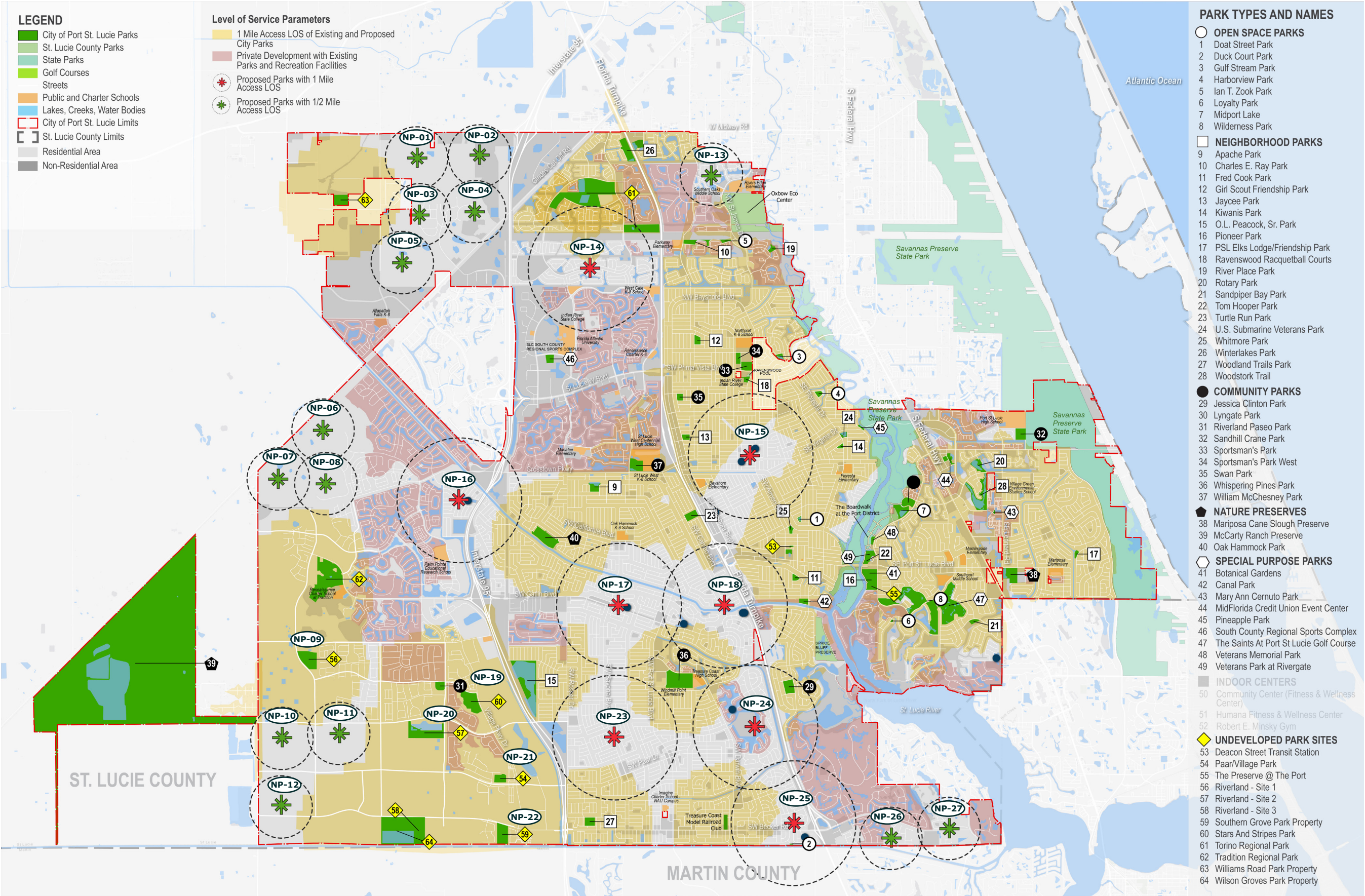


Figure 5.17 - Pickleball Courts Vision Projects

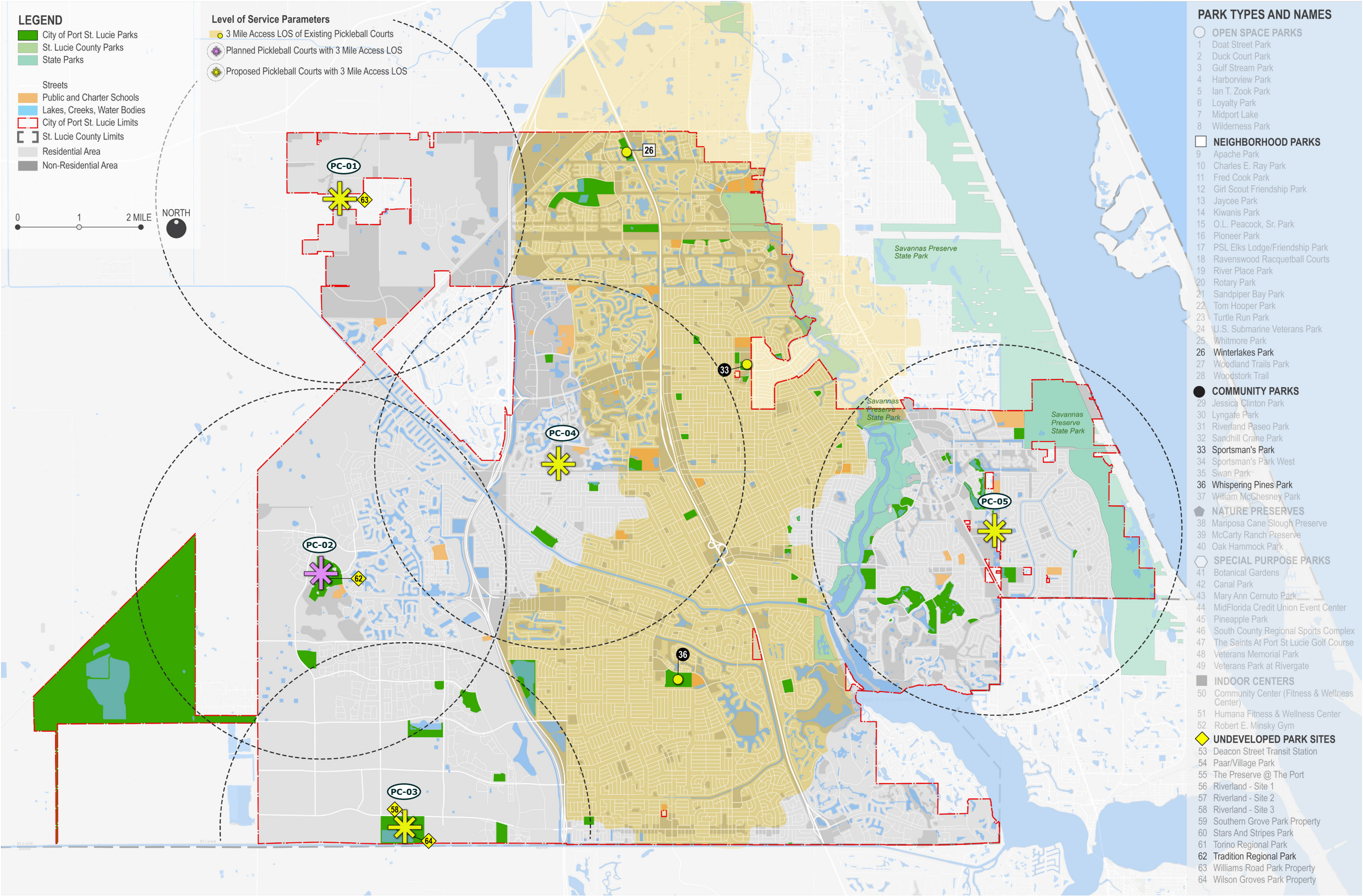


Figure 5.18 - Playground Vision Projects

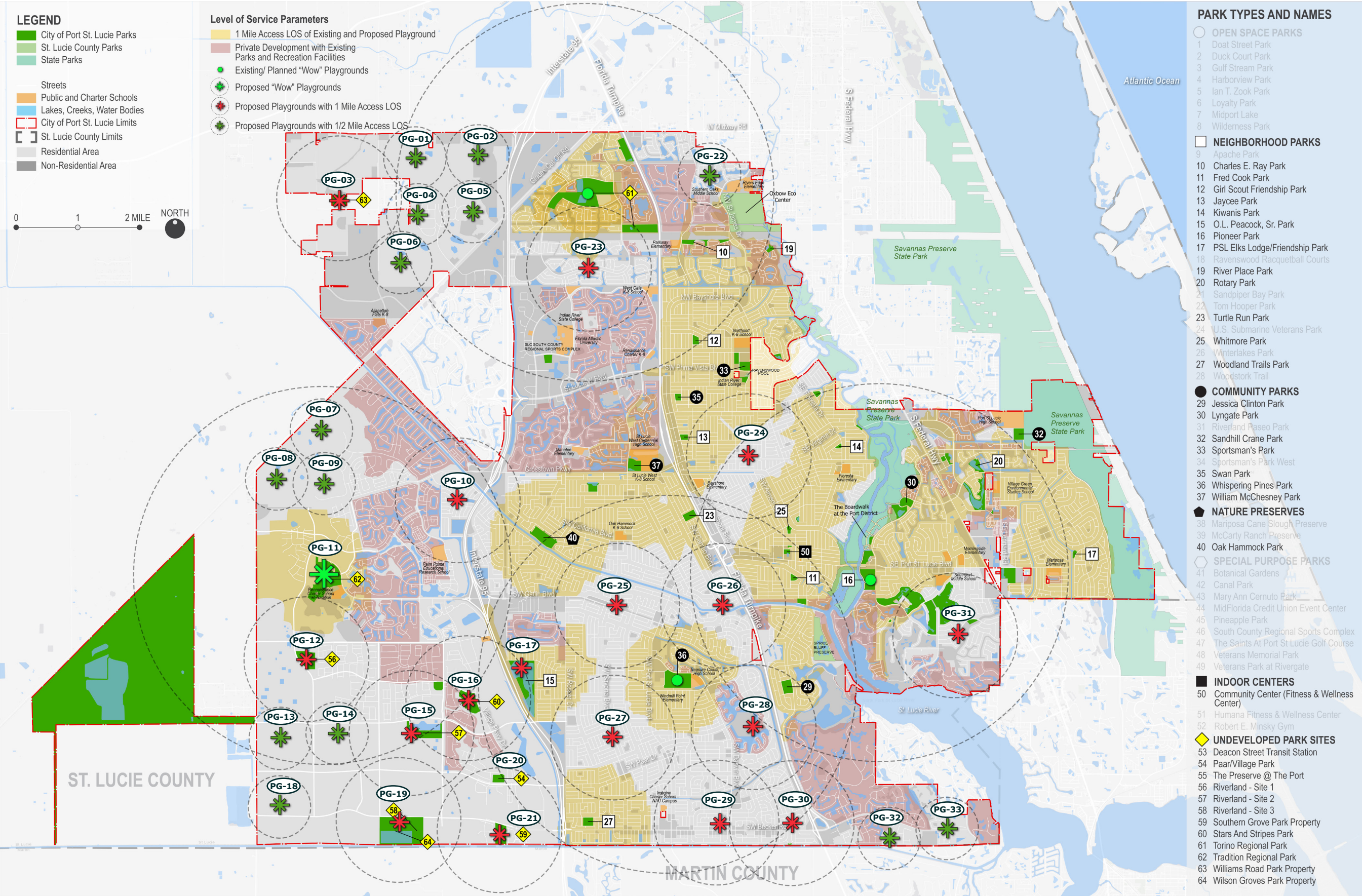


Figure 5.19 - School Park Vision Projects

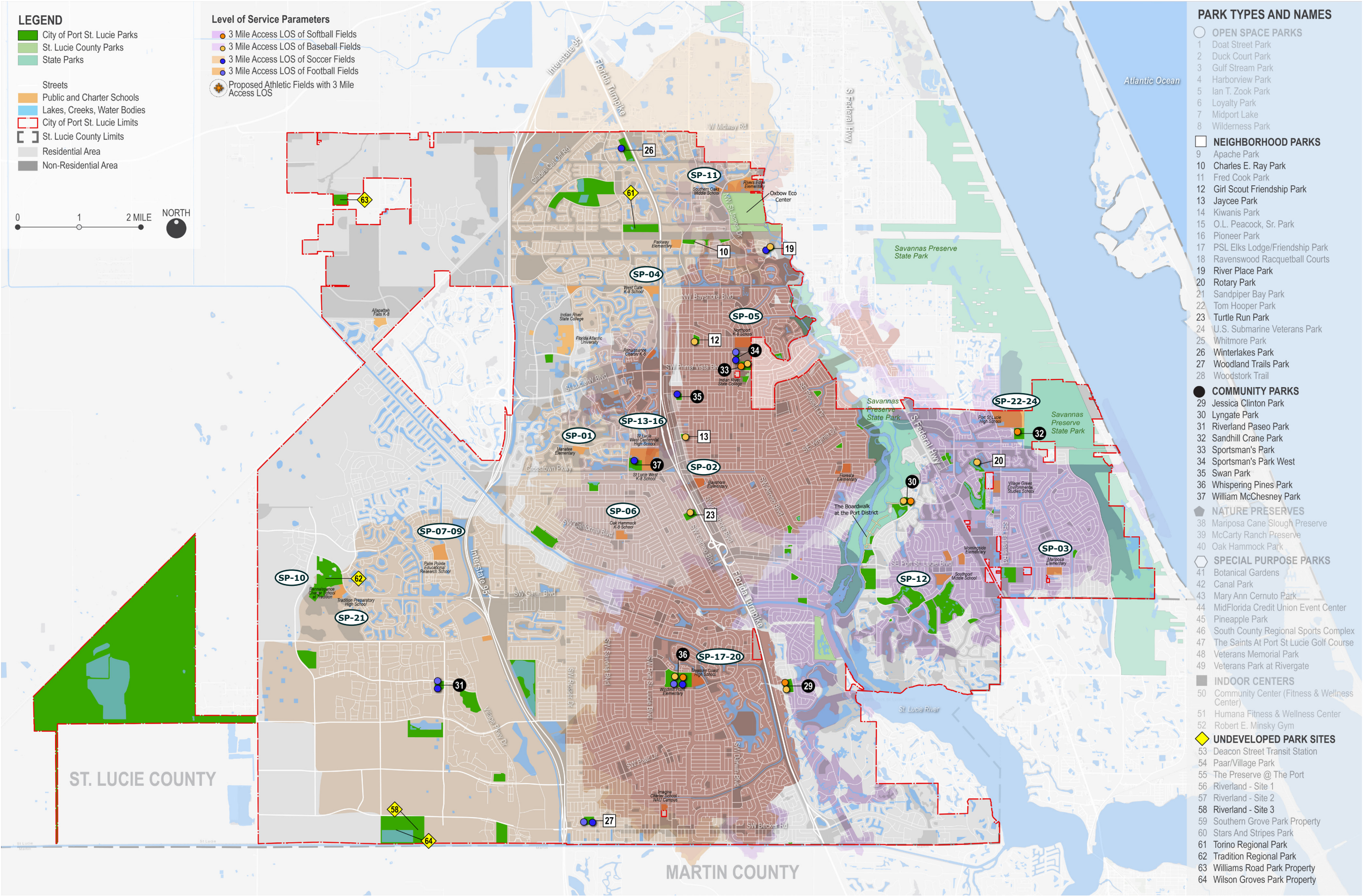
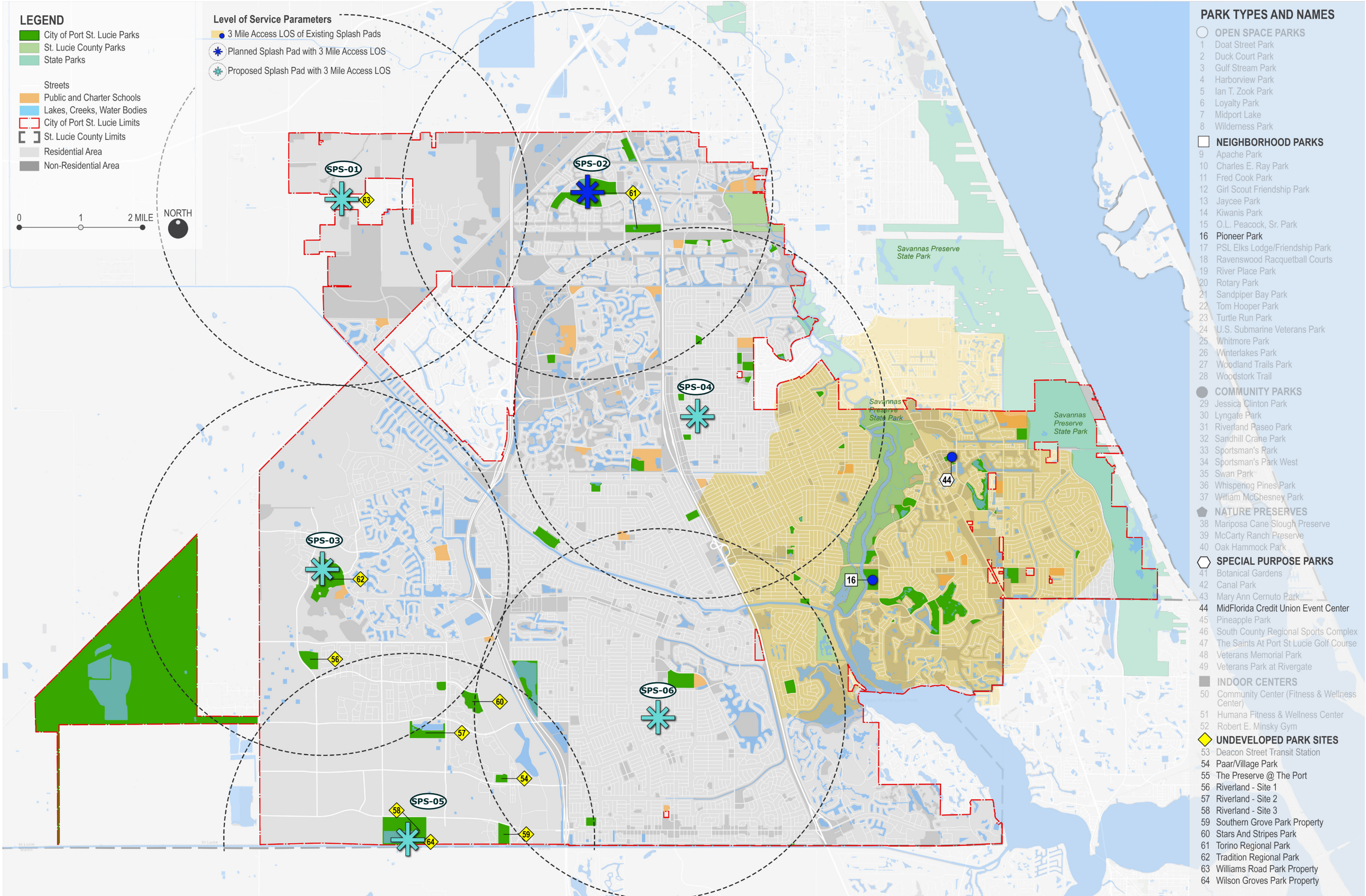


Figure 5.20 - Splash Pads Vision Projects



Appendix B - Parks and Recreation Facility Parking Guidelines

Figure B.1 identifies parking guidelines for parks and recreation facilities. These guidelines should serve as a starting point for potential parking space needs and may be adjusted in coordination with the Parks and Recreation Department Director based on park and recreation facility programmatic needs. Where appropriate, on-street parking space may count towards target parking counts.

Figure B.1 - Parks and Recreation Facility Parking Guidelines

Park Facility/ Amenity	Parking Guideline
Neighborhood Park	Neighborhood Parks are intended to serve residents living within close proximity of the park. Therefore limited parking should be provided. 5-10 parking spaces; ideally as on-street parking.
Stormwater Pond Park	Stormwater Pond Parks are intended to serve residents living within close proximity of the park. Therefore limited parking should be provided. 5-10 parking spaces; ideally as on-street parking.
Linear Park	Linear Parks are intended to serve residents living within close proximity of the park. Therefore limited parking should be provided. 5-10 parking spaces; ideally as on-street parking.
Community/ Regional/ School/ Special Use Parks	Community/ Regional, School Parks, and Special Use Facilities are where residents go to socialize and recreate with the larger community. Parking spaces for these parks should be informed by facility parking guidelines noted below as well as other applicable zoning recommendations.
Community Center with Gymnasium	1 parking space per 100 square feet of gymnasium space + 1 parking space per 500 square feet of the remainder of the building
Amphitheater	1 parking space per 300 square feet
Baseball Field - Little League (Recreational)	30 parking spaces
Baseball Field - Little League (Tournament)	60 parking spaces
Baseball Field - Youth/ Adult (Recreational)	35 parking spaces
Baseball Field - Youth/ Adult (Tournament)	70 parking spaces
Basketball Court	5 parking spaces per basketball court
Community Garden	1 parking space for every 2 community garden plots
Dog Park	1 parking space per 1,200 square feet of dog corral
Football Field (Recreational)	65 parking spaces
Football Field (Tournament)	130 parking spaces
Lacrosse Field (Recreational)	45 parking spaces
Lacrosse Field (Tournament)	90 parking spaces
Outdoor Fitness Station	2 parking spaces
Playground	1 parking space per 750 square feet of playground
Pickleball Court	4 parking spaces per pickleball court
Soccer Field (Recreational)	40 parking spaces
Soccer Field (Tournament)	80 parking spaces
Softball Field - Youth/ Adult (Recreational)	35 parking spaces
Softball Field - Youth/ Adult (Tournament)	70 parking spaces
Splash Pad	1 parking space per 250 square feet of splash pad
Tennis Court	2 parking spaces per tennis court

