



*Tradition Design Review Committee
Architectural Review*

10807 SW Tradition Square Port St. Lucie, FL 34987

Phone (772) 345-5101

Date: 10.31.23

To: EDC, Inc.

*Attention: Patricia Sesta
10250 SW Village Parkway
Port St. Lucie, FL 34987*

*Regarding: Village Parkway Plaza – **Preliminary** Site Plan, Landscape Plans and Elevations **RESPONSE TO COMMENTS***

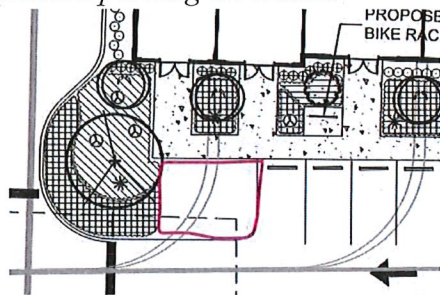
This notice serves as the Design Review Committee's response to your request as referenced above. Please note any comments made by the Committee as listed below.

If you have any questions regarding this matter, please do not hesitate to contact the Committee at (772) 345-5101.

Status: Approved With Comments

The Committee has reviewed this submittal and has approved it with the following comments:

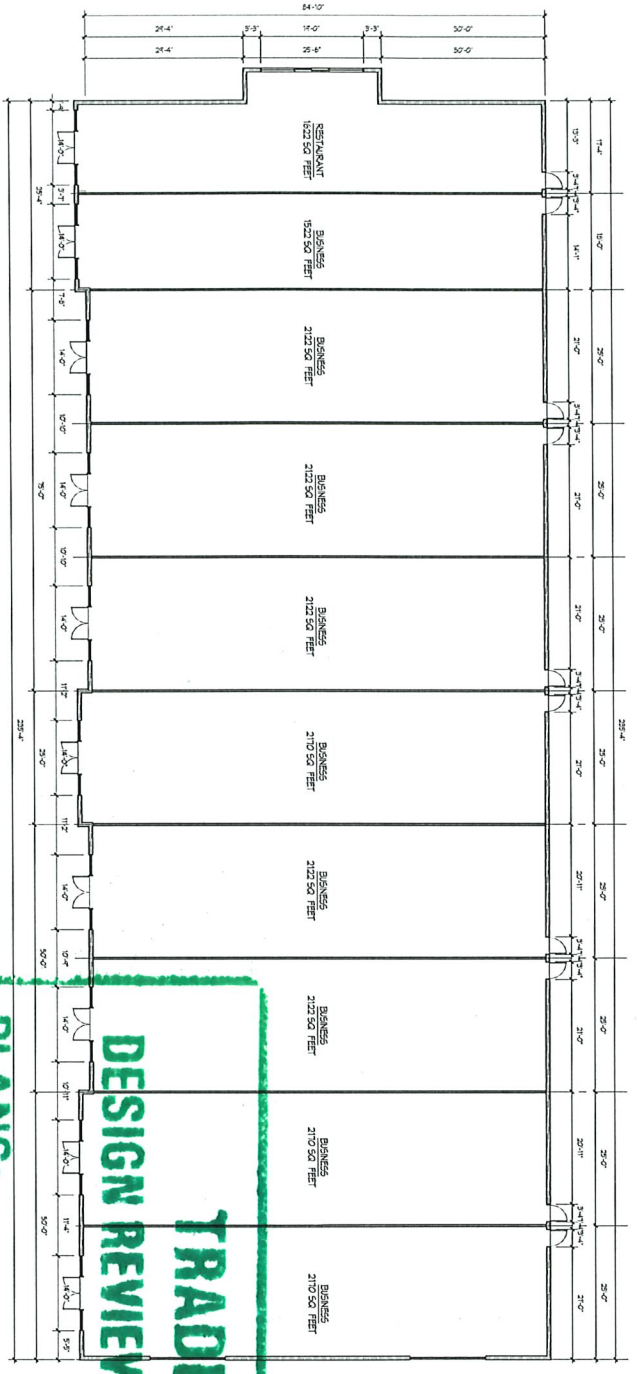
- *Landscape – Approved pending additional landscape (groundcover/low shrubs) being included in expanded parking lot island.*



- *This is a preliminary approval – full submittal (final landscape plans, elevations, colors/materials board, signage, review fees and deposit) are still due to the Tradition DRC.*
- *Submittal is required to Southern Grove Community Development District for irrigation and drainage permit – please contact Culpepper & Terpening, Attention Kelly Cranford 2980 S. 25th Street, Fort Pierce, FL 34981 (772) 464-3537 x222, kcranford@ct-eng.com*

Thank you.

Tradition Design Review Committee



AREA CALCULATIONS

TOTAL BUILDING AREA	28295 SQ. FT.
TOTAL	28295 SQ. FT.

**TRADITION
DESIGN REVIEW COMMITTEE**

PLANS:

APPROVED:

DISAPPROVED:

SEE COMMENTS:

DATE:

ORC MEMBER

ALL EQUIPMENT ON ROOF SHALL BE SECURED TO ROOF FROM WIND ALL A/C AND OTHER EQUIPMENT ON ROOF FROM WIND FROM A DISTANCE OF 300 FEET AT 6 FEET ABOVE GROUND

MATERIAL LEGEND

- FINISH FLOORING
- FINISH WALLS
- FINISH CEILING
- ROOFING
- GLASS
- MECHANICAL
- ELECTRICAL
- PLUMBING
- PAINT
- LANDSCAPE
- EXTERIOR FINISH
- INTERIOR FINISH
- MECHANICAL
- ELECTRICAL
- PLUMBING
- PAINT
- LANDSCAPE
- EXTERIOR FINISH
- INTERIOR FINISH

REVISIONS

NO.	DESCRIPTION	DATE
1	ISSUED FOR PERMITS	07.28.2023
2		
3		
4		
5		
6		
7		
8		
9		
10		

DATE: OCT 31 2023

PROJECT NUMBER: TBD



A NEW COMMERCIAL FACILITY FOR:
VILLAGE PARKWAY PLAZA
PORT SAINT LUCIE FLORIDA

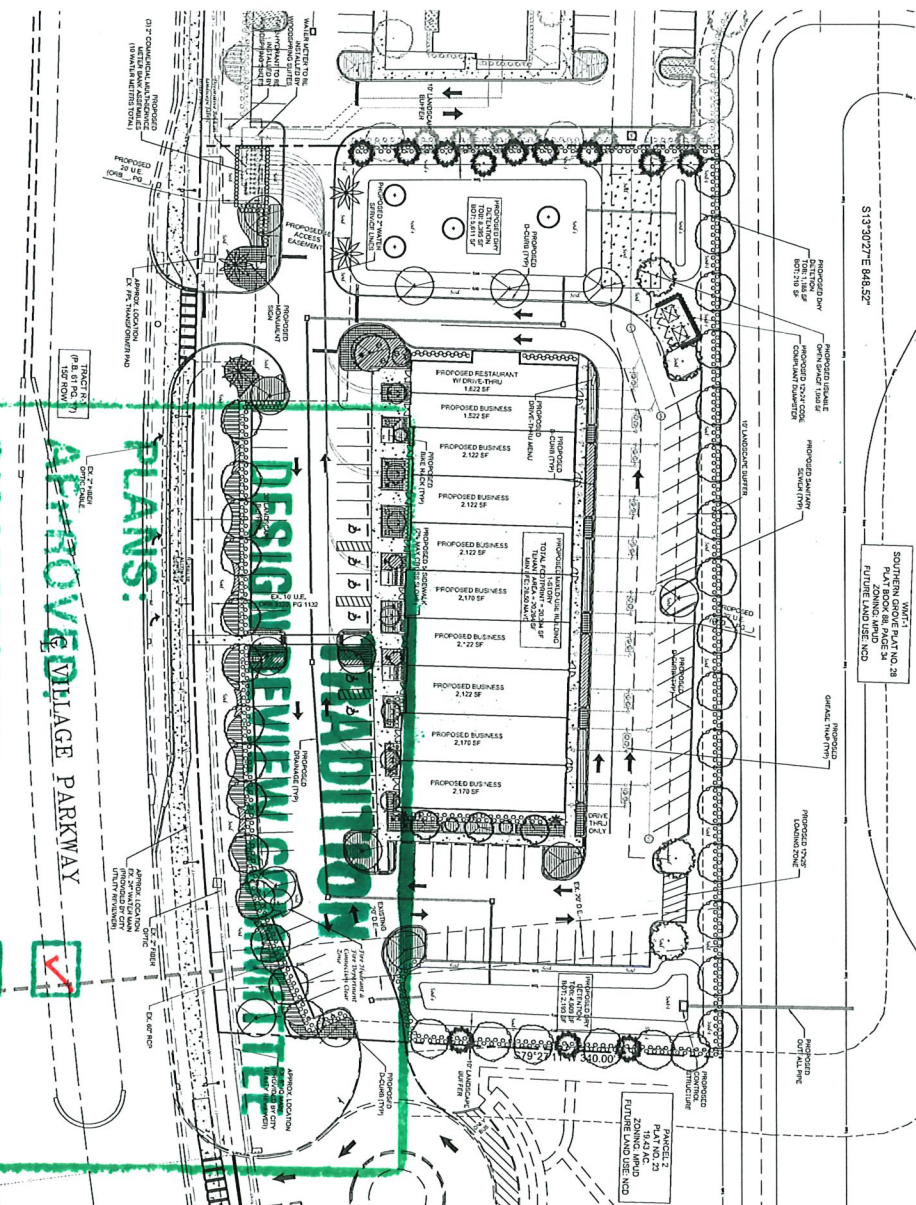
Landscape Data

Plant	Quantity	Notes
1" Trunked Tree	18	18 Trunked Trees
2" Trunked Tree	18	18 Trunked Trees
3" Trunked Tree	18	18 Trunked Trees
4" Trunked Tree	18	18 Trunked Trees
5" Trunked Tree	18	18 Trunked Trees
6" Trunked Tree	18	18 Trunked Trees
7" Trunked Tree	18	18 Trunked Trees
8" Trunked Tree	18	18 Trunked Trees
9" Trunked Tree	18	18 Trunked Trees
10" Trunked Tree	18	18 Trunked Trees
11" Trunked Tree	18	18 Trunked Trees
12" Trunked Tree	18	18 Trunked Trees
13" Trunked Tree	18	18 Trunked Trees
14" Trunked Tree	18	18 Trunked Trees
15" Trunked Tree	18	18 Trunked Trees
16" Trunked Tree	18	18 Trunked Trees
17" Trunked Tree	18	18 Trunked Trees
18" Trunked Tree	18	18 Trunked Trees
19" Trunked Tree	18	18 Trunked Trees
20" Trunked Tree	18	18 Trunked Trees
21" Trunked Tree	18	18 Trunked Trees
22" Trunked Tree	18	18 Trunked Trees
23" Trunked Tree	18	18 Trunked Trees
24" Trunked Tree	18	18 Trunked Trees
25" Trunked Tree	18	18 Trunked Trees
26" Trunked Tree	18	18 Trunked Trees
27" Trunked Tree	18	18 Trunked Trees
28" Trunked Tree	18	18 Trunked Trees
29" Trunked Tree	18	18 Trunked Trees
30" Trunked Tree	18	18 Trunked Trees
31" Trunked Tree	18	18 Trunked Trees
32" Trunked Tree	18	18 Trunked Trees
33" Trunked Tree	18	18 Trunked Trees
34" Trunked Tree	18	18 Trunked Trees
35" Trunked Tree	18	18 Trunked Trees
36" Trunked Tree	18	18 Trunked Trees
37" Trunked Tree	18	18 Trunked Trees
38" Trunked Tree	18	18 Trunked Trees
39" Trunked Tree	18	18 Trunked Trees
40" Trunked Tree	18	18 Trunked Trees
41" Trunked Tree	18	18 Trunked Trees
42" Trunked Tree	18	18 Trunked Trees
43" Trunked Tree	18	18 Trunked Trees
44" Trunked Tree	18	18 Trunked Trees
45" Trunked Tree	18	18 Trunked Trees
46" Trunked Tree	18	18 Trunked Trees
47" Trunked Tree	18	18 Trunked Trees
48" Trunked Tree	18	18 Trunked Trees
49" Trunked Tree	18	18 Trunked Trees
50" Trunked Tree	18	18 Trunked Trees

Plant List

Plant	Quantity	Notes
1" Trunked Tree	18	18 Trunked Trees
2" Trunked Tree	18	18 Trunked Trees
3" Trunked Tree	18	18 Trunked Trees
4" Trunked Tree	18	18 Trunked Trees
5" Trunked Tree	18	18 Trunked Trees
6" Trunked Tree	18	18 Trunked Trees
7" Trunked Tree	18	18 Trunked Trees
8" Trunked Tree	18	18 Trunked Trees
9" Trunked Tree	18	18 Trunked Trees
10" Trunked Tree	18	18 Trunked Trees
11" Trunked Tree	18	18 Trunked Trees
12" Trunked Tree	18	18 Trunked Trees
13" Trunked Tree	18	18 Trunked Trees
14" Trunked Tree	18	18 Trunked Trees
15" Trunked Tree	18	18 Trunked Trees
16" Trunked Tree	18	18 Trunked Trees
17" Trunked Tree	18	18 Trunked Trees
18" Trunked Tree	18	18 Trunked Trees
19" Trunked Tree	18	18 Trunked Trees
20" Trunked Tree	18	18 Trunked Trees
21" Trunked Tree	18	18 Trunked Trees
22" Trunked Tree	18	18 Trunked Trees
23" Trunked Tree	18	18 Trunked Trees
24" Trunked Tree	18	18 Trunked Trees
25" Trunked Tree	18	18 Trunked Trees
26" Trunked Tree	18	18 Trunked Trees
27" Trunked Tree	18	18 Trunked Trees
28" Trunked Tree	18	18 Trunked Trees
29" Trunked Tree	18	18 Trunked Trees
30" Trunked Tree	18	18 Trunked Trees
31" Trunked Tree	18	18 Trunked Trees
32" Trunked Tree	18	18 Trunked Trees
33" Trunked Tree	18	18 Trunked Trees
34" Trunked Tree	18	18 Trunked Trees
35" Trunked Tree	18	18 Trunked Trees
36" Trunked Tree	18	18 Trunked Trees
37" Trunked Tree	18	18 Trunked Trees
38" Trunked Tree	18	18 Trunked Trees
39" Trunked Tree	18	18 Trunked Trees
40" Trunked Tree	18	18 Trunked Trees
41" Trunked Tree	18	18 Trunked Trees
42" Trunked Tree	18	18 Trunked Trees
43" Trunked Tree	18	18 Trunked Trees
44" Trunked Tree	18	18 Trunked Trees
45" Trunked Tree	18	18 Trunked Trees
46" Trunked Tree	18	18 Trunked Trees
47" Trunked Tree	18	18 Trunked Trees
48" Trunked Tree	18	18 Trunked Trees
49" Trunked Tree	18	18 Trunked Trees
50" Trunked Tree	18	18 Trunked Trees

Jeffrey W. Smith, RLA
2023.10.09 15:09:57 -04:00



DESIGN REVIEW COMMITTEE

APPROVED

PLANS:

APPROVED

DISAPPROVED

COMMENTS:

DATE: OCT 31 2023

General Notes:

DRC MEMBER: *Wesley*

Conceptual Landscape Plan

Scale: 1" = 30'

Village Parkway Plaza

Tradition
City of Port St. Lucie, Florida

Conceptual Design Group, Inc.
Landscape Architecture - Site Planning
900 Port St. Lucie Highway, Suite 200
Port St. Lucie, Florida 34954
Tel: 888.688.6888
Fax: 888.688.6888

Revision Dates:

1. 10-31-2023

2. 10-31-2023

3. 10-31-2023

4. 10-31-2023

5. 10-31-2023

6. 10-31-2023

7. 10-31-2023

8. 10-31-2023

9. 10-31-2023

10. 10-31-2023

11. 10-31-2023

12. 10-31-2023

13. 10-31-2023

14. 10-31-2023

15. 10-31-2023

16. 10-31-2023

17. 10-31-2023

18. 10-31-2023

19. 10-31-2023

20. 10-31-2023

21. 10-31-2023

22. 10-31-2023

23. 10-31-2023

24. 10-31-2023

25. 10-31-2023

26. 10-31-2023

27. 10-31-2023

28. 10-31-2023

29. 10-31-2023

30. 10-31-2023

31. 10-31-2023

32. 10-31-2023

33. 10-31-2023

34. 10-31-2023

35. 10-31-2023

36. 10-31-2023

37. 10-31-2023

38. 10-31-2023

39. 10-31-2023

40. 10-31-2023

41. 10-31-2023

42. 10-31-2023

43. 10-31-2023

44. 10-31-2023

45. 10-31-2023

46. 10-31-2023

47. 10-31-2023

48. 10-31-2023

49. 10-31-2023

50. 10-31-2023