

Phase - II - Landscape Contractor

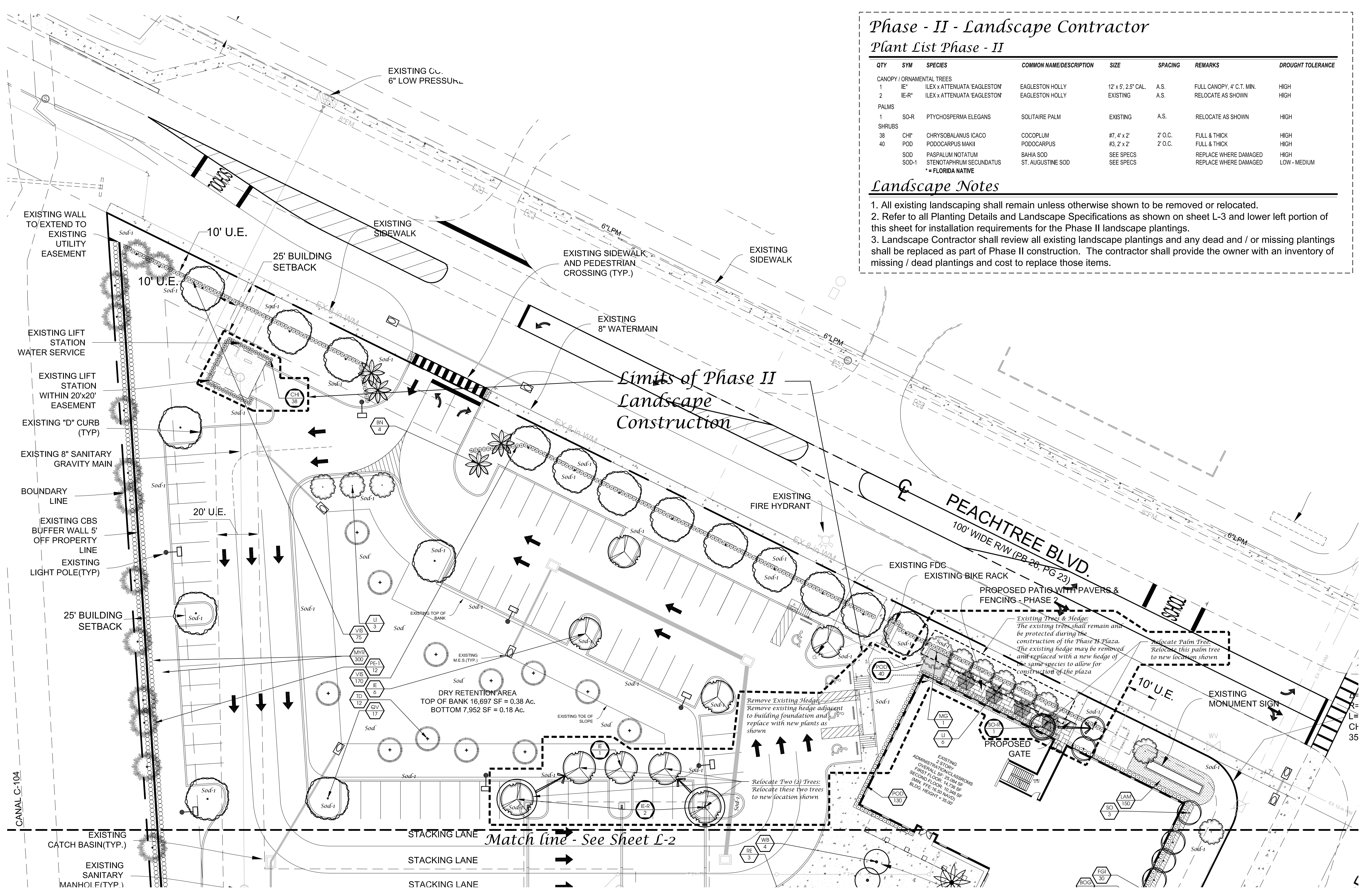
Plant List Phase - II

QTY	SYM	SPECIES	COMMON NAME/DESCRIPTION	SIZE	SPACING	REMARKS	DROUGHT TOLERANCE
CANOPY / ORNAMENTAL TREES							
1	IE*	ILEX x ATTENUATA 'EAGLESTON'	EAGLESTON HOLLY	12' x 5', 2.5" CAL.	A.S.	FULL CANOPY, 4' C.T. MIN.	HIGH
2	IE-R*	ILEX x ATTENUATA 'EAGLESTON'	EAGLESTON HOLLY	EXISTING	A.S.	RELOCATE AS SHOWN	HIGH
PALMS							
1	SO-R	PTYCHOSPERMA ELEGANS	SOLITAIRE PALM	EXISTING	A.S.	RELOCATE AS SHOWN	HIGH
SHRUBS							
38	CHI*	CHRYSOBALANUS ICACO	COCOPLUM	#7, 4' x 2'	2' O.C.	FULL & THICK	HIGH
40	POD	PODOCARPUS MAKII	PODOCARPUS	#3, 2' x 2'	2' O.C.	FULL & THICK	HIGH
	SOD	PASPALUM NOTATUM	BAHIA SOD	SEE SPECS		REPLACE WHERE DAMAGED	HIGH
	SOD-1	STENOTAPHRUM SECUNDATUS	ST. AUGUSTINE SOD	SEE SPECS		REPLACE WHERE DAMAGED	LOW - MEDIUM

* = FLORIDA NATIVE

Landscape Notes

- All existing landscaping shall remain unless otherwise shown to be removed or relocated.
- Refer to all Planting Details and Landscape Specifications as shown on sheet L-3 and lower left portion of this sheet for installation requirements for the Phase II landscape plantings.
- Landscape Contractor shall review all existing landscape plantings and any dead and / or missing plantings shall be replaced as part of Phase II construction. The contractor shall provide the owner with an inventory of missing / dead plantings and cost to replace those items.



Calvary Port St. Lucie
 St. James Drive
 City of Port St. Lucie, Florida

City Project Number: P17-181

Jeffrey W. Smith, RLA
 Florida Registration Number:
 LA 0001635

Job No.	17-0501A
Drawn By	JWS
Submittal Dates	3-5-2024 4-25-2024 8-1-2024
Revision Dates	4-25-2024
Comments #1	4-25-2024
Turn Lane	8-1-2024

These drawings are the property of the landscape architect and are not to be used for other projects except by written permission from the landscape architect. Report any discrepancies immediately to the landscape architect.

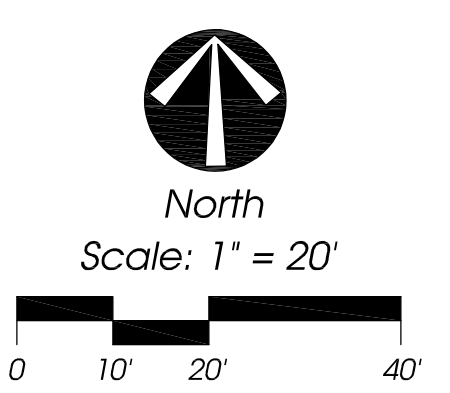
Port St. Lucie Utility Systems Department Notes

- No landscaping shall be planted in such a manner as to adversely affect utility installation, operation, or maintenance.
- No landscaping other than sod grasses may be planted within a 5' radius maintenance area of any PSLUSD appurtenance such as water meters, backflow devices, fire hydrants, sanitary sewer cleanouts, and manholes, air release valves, etc. Trees shall not be planted within ten (10) feet of any PSLUSD infrastructure. All measurements are from outside to outside, not centerline to centerline. Example: outside of pipe to nearest point on tree trunk.
- No landscaping shall be planted in such a manner as to adversely affect drainage or utility easements.
- Trees with a maximum mature height great enough to interfere with overhead power lines shall not be planted below overhead power lines. Such trees with a maximum mature height less than the height of the overhead power line shall be selected from Appendix C, Table 1, Type B Trees. No tree shall be planted within 10 feet of any existing utility pole, guy wire, or pad mounted transformer (See FP&L's publication "Plant the Right Tree in the Right Place" for placement and maintenance requirements).
- Trees shall not be planted within ten (10) feet of any PSLUSD underground infrastructure.

Port St. Lucie Engineering Department Notes

- The landscape plans meet the City's sight distance and clear zone requirements from Section 158.204 of the Code for 10' requirements.

Landscape Plan



Calvary Port St. Lucie

St. James Drive
 City of Port St. Lucie, Florida

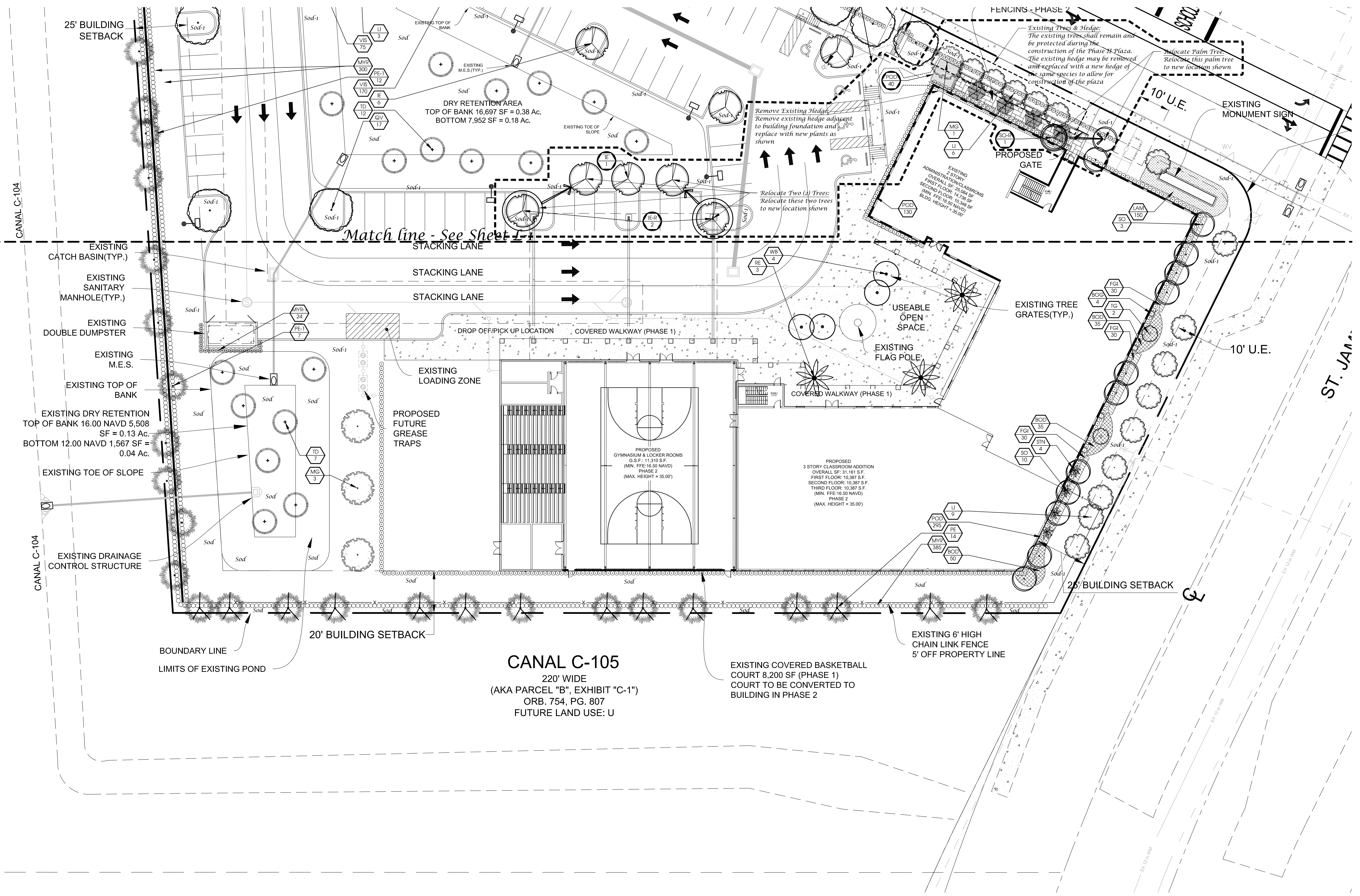
City Project Number: P17-181

Jeffrey W. Smith, RLA
 Florida Registration Number:
 LA 0001635

Job No.	17-0501A
Drawn By	JWS
Submission Dates	3-5-2024 4-25-2024 8-1-2024

Revision Dates	
Comments #1	4-25-2024
Turn Lane	8-1-2024

These drawings are the property of the landscape architect and are not to be used for other projects except by written permission from the landscape architect. Report any discrepancies immediately to the landscape architect.



Landscape Plan

