

Key / Location:

PROJECT LOCATION

Project Team:

Client & Property Owner: Midway Glades Developer
 7807 Baymeadows Road, Suite 205
 Jacksonville, Florida 32256

Land Planner / Landscape Architect: Lucido & Associates
 701 East Ocean Boulevard
 Stuart, Florida 34994

Engineer: Kimley Horn And Associates
 445 24th Street, Suite 200
 Vero Beach, Florida 32960

Surveyor: Geopoint
 4450 West Eaugallie Blvd.
 Suit 130 Melbourne, Florida 32934

Wylder Art In Public Places

Landscape Plan

Port St Lucie, Florida
 P23-132
 PSLUSD# xx-xxx-xxx

Date	By	Description
04.01.26	EMA	Submittal

West Plaza Art In Public Places Landscape Plan - Phase 1
Residential Public Art Requirement
 Scale: 1" = 20'

Plant Schedule

CODE	QTY	BOTANICAL NAME	COMMON NAME	CONTAINER	HEIGHT	WIDTH	NOTES	NATIVE	CAL
TREES									
PE2	13	Pinus elliotti	Slash Pine	FG	14'-16' HT	6' SPR	F, SP, STD	Native	3"-4" Caliper
SP	22	Sabal palmetto	Sabal Palm	FG	10' - 18' OA		Booted, Hurricane cut, Feild Grown	Native	
	35	SUBTOTAL:							
SHRUB AREAS									
OB	619	Ophiopogon bodinieri	Dwarf Mondo Grass	CG	6"HT	24"W		Non-native	24" o.c.
SB	6,287	Spartina bakeri	Sand Cordgrass	CG	4' HT	24"W		Native	24" o.c.
	6,906	SUBTOTAL:							

Landscape Notes

- No landscaping shall be planted in a manner that would adversely affect utility easements. Landscaping shall be in compliance with Chapter 154 of the City of Port St. Lucie Code of Ordinances, PSLUSD technical specifications and policies.
- All landscaping within City utility easements shall comply with PSLUSD technical specifications, policies, and codes.
- All landscaping shall meet the latest PSLUSD Landscape Policy and shall not be placed in a manner that would create conflicts with the intended operation and maintenance of any existing utility.
- Trees shall not be planted within ten (10) feet of any PSLUSD underground infrastructure.
- No landscaping other than sod grasses shall be located within 5' of a PSLUSD appurtenance such as a water meter assembly, backflow device, fire hydrant or sewer cleanout, etc.

NORTH

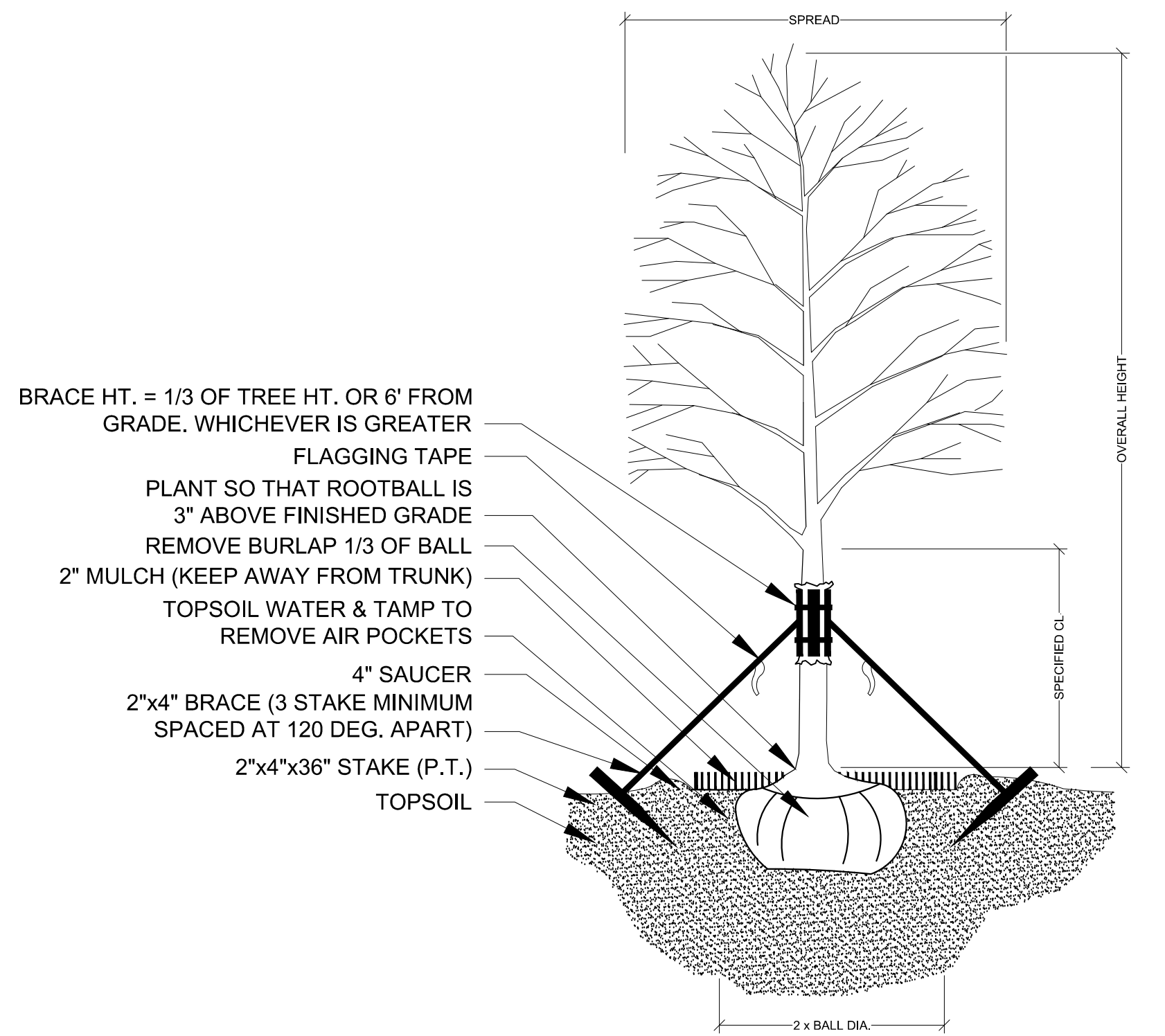
SCALE: 1" = 20'

REG. # 6667114
 Steven D. Garrett

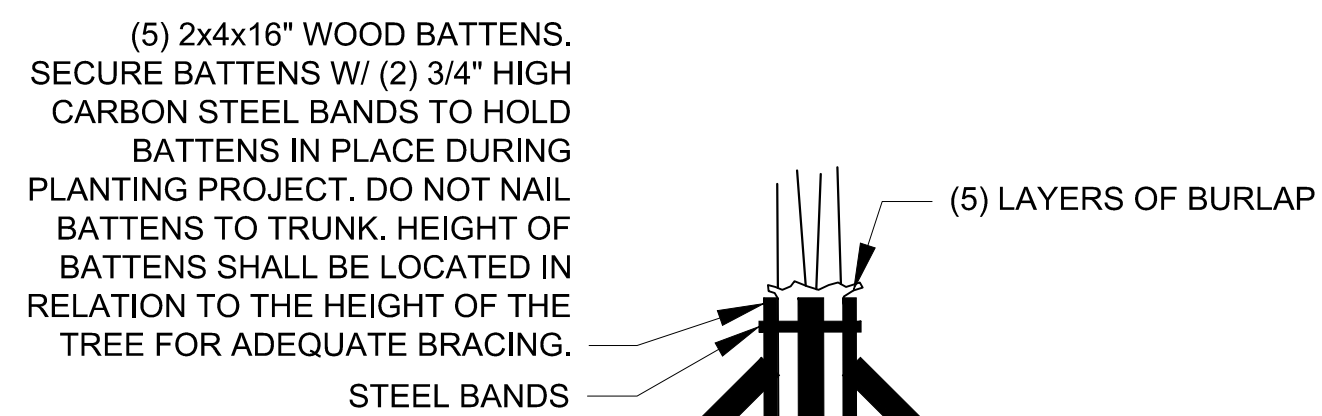
Designer: EMA
 Manager: SG
 Project Number: 26-060
 Municipal Number: P23-132
 Computer File: 26-060 - Wylder AIPP At Commercial - Submittal Site P

Sheet
LA1

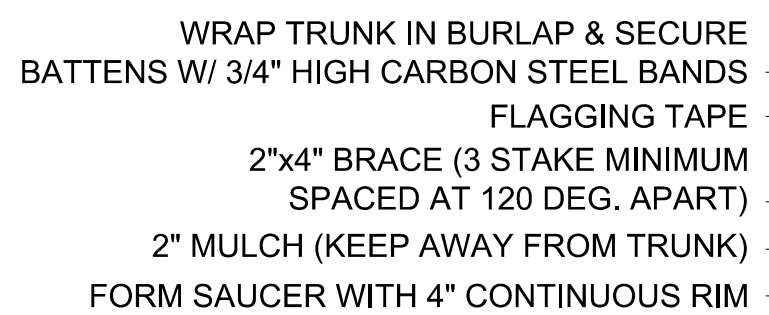
© Copyright Lucido & Associates. These documents and their contents are the property of Lucido & Associates. Any reproductions, revisions, modifications or use of these documents without the express written consent of Lucido & Associates is prohibited by law.



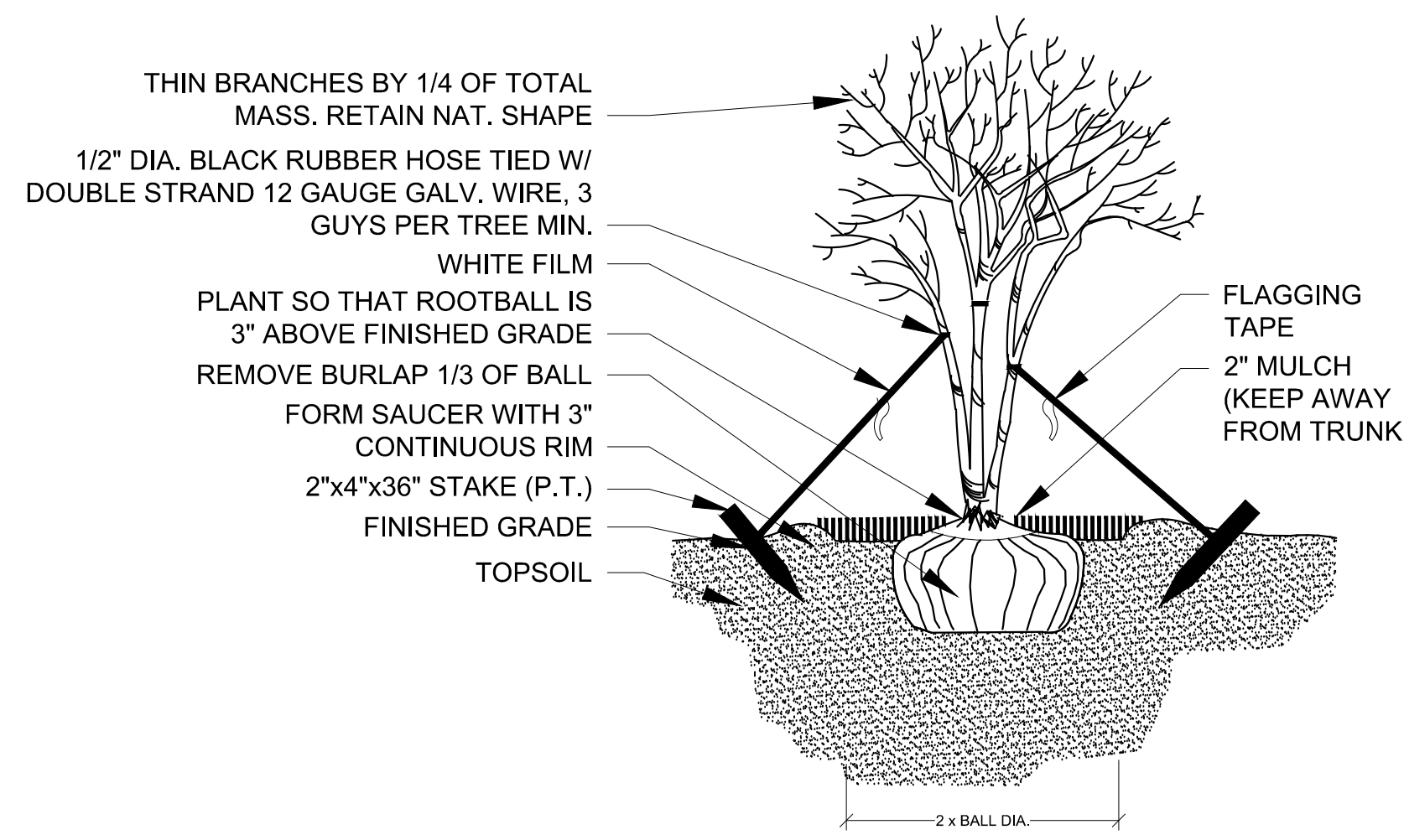
TREE PLANTING & STAKING
NOT TO SCALE



BRACING DETAIL
NOT TO SCALE

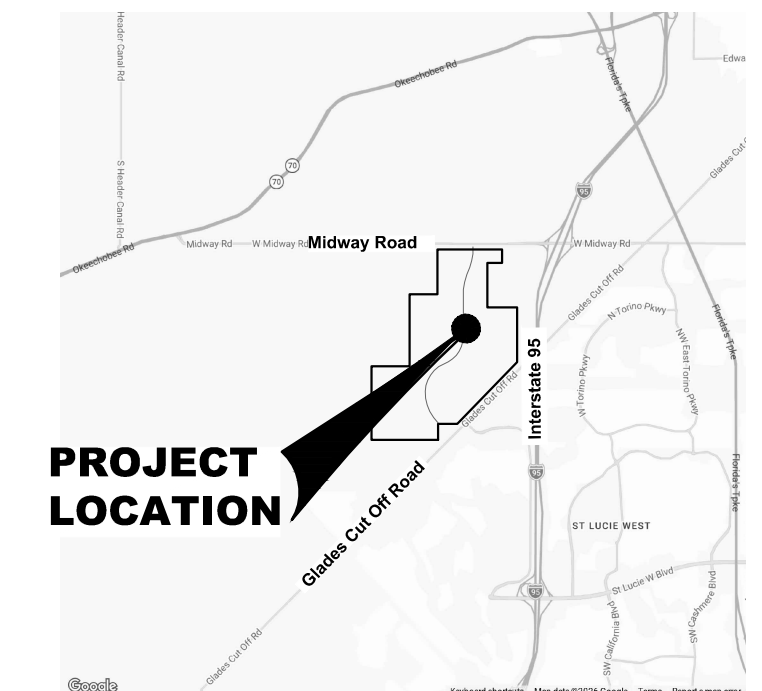


PALM PLANTING - ANGLE STAKE
NOT TO SCALE



MULTI-TRUNK PLANTING & GUYING
NOT TO SCALE

Key / Location:



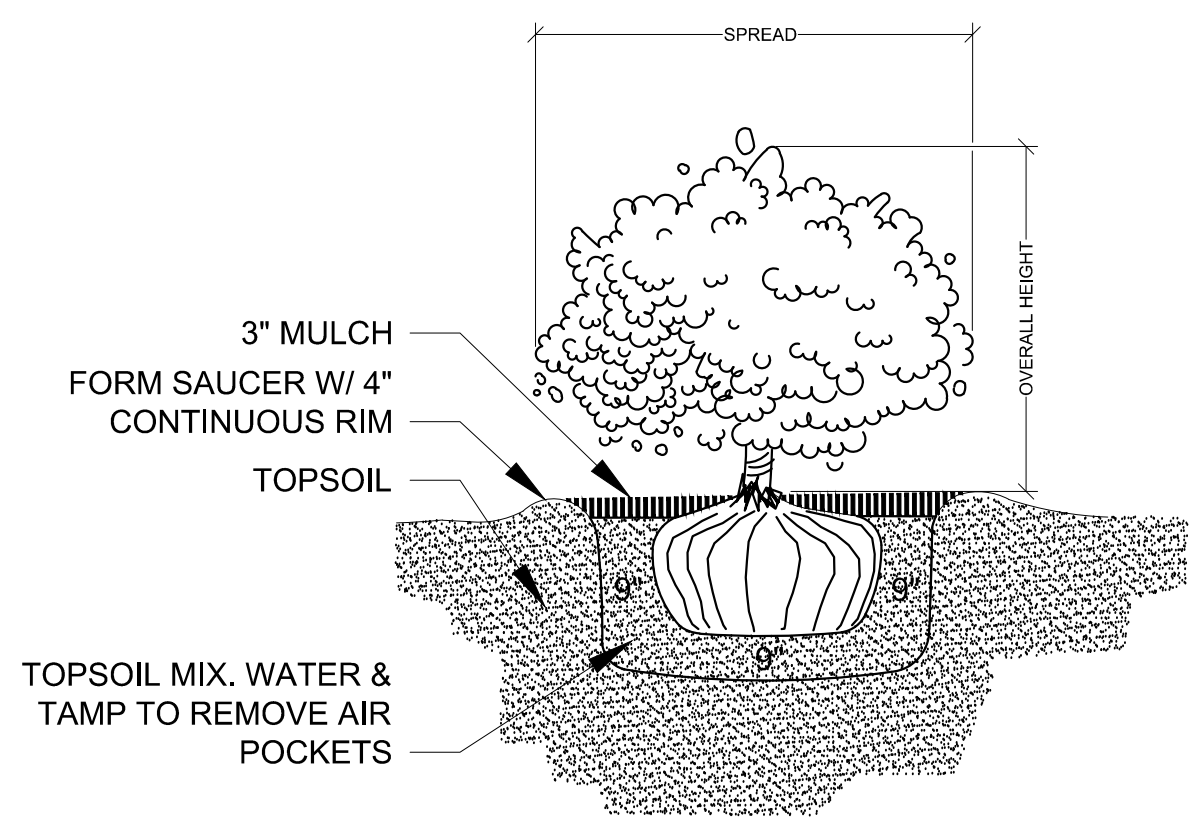
Project Team:

Client & Property Owner: Midway Glades Developer
 7807 Baymeadows Road, Suite 205
 Jacksonville, Florida 32256

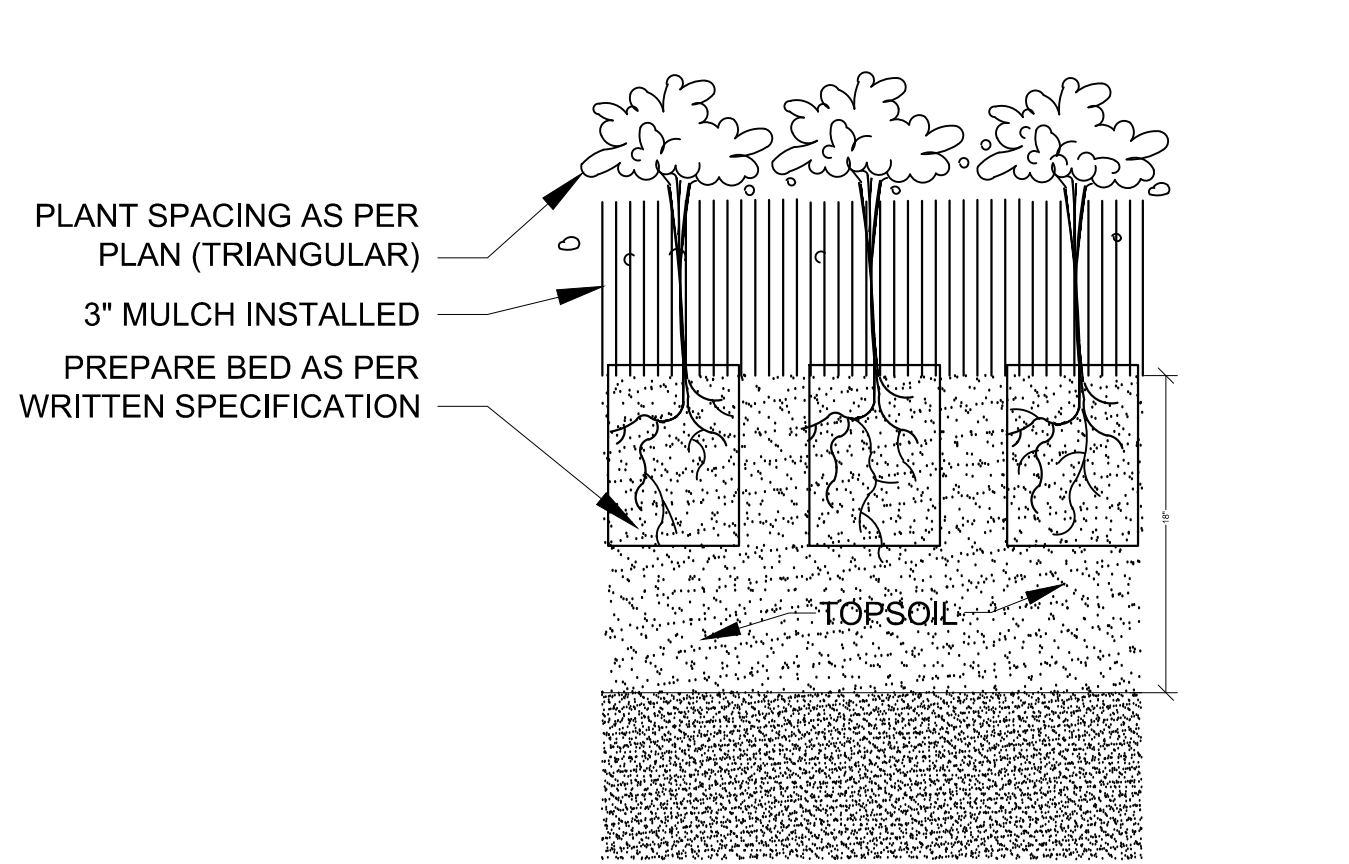
Land Planner / Landscape Architect: Lucido & Associates
 701 East Ocean Boulevard
 Stuart, Florida 34994

Engineer: Kimley Horn And Associates
 445 24th Street, Suite 200
 Vero Beach, Florida 32960

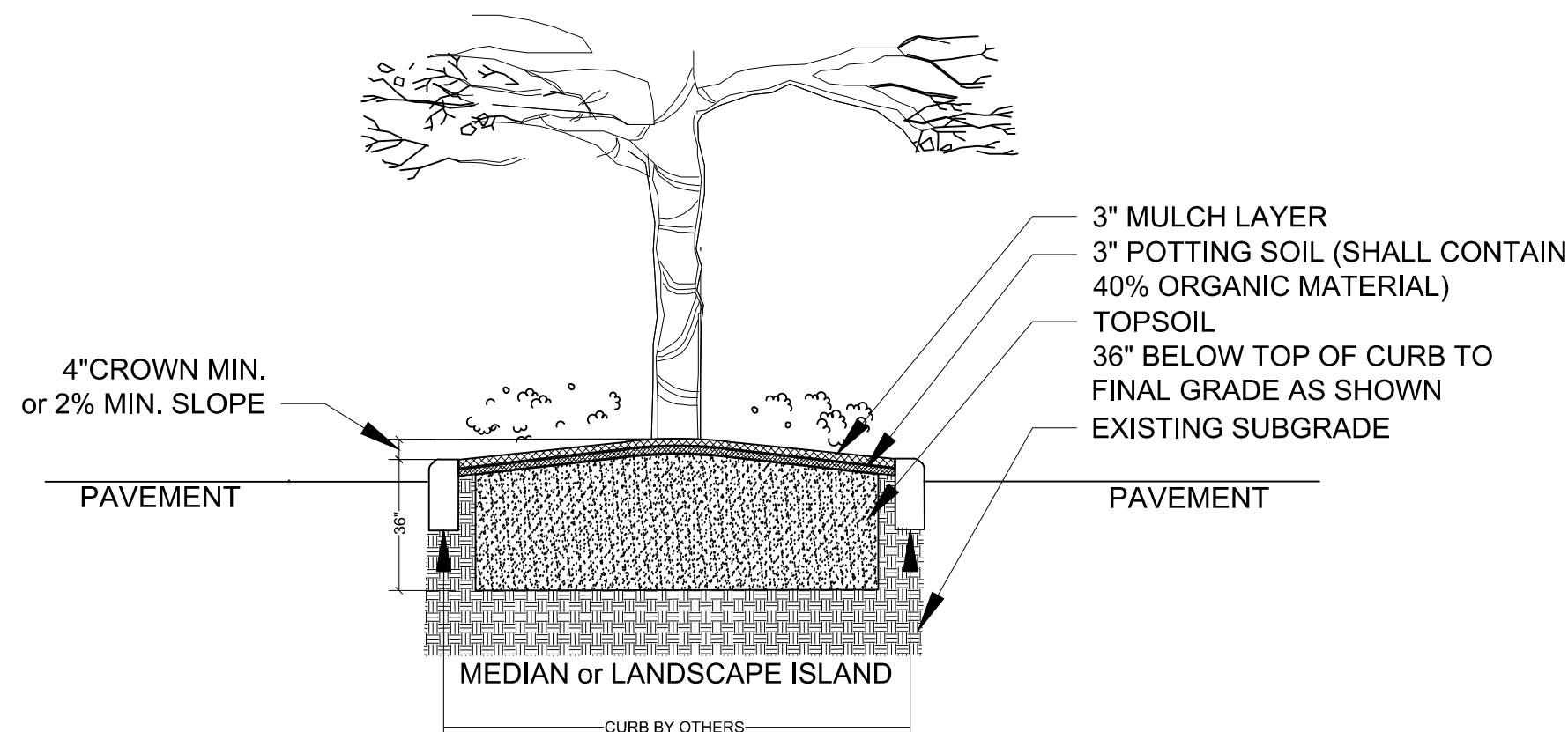
Surveyor: Geopoint
 4450 West Eaugallie Blvd.
 Suit 130 Melbourne, Florida 32934



SHRUB PLANTING
NOT TO SCALE

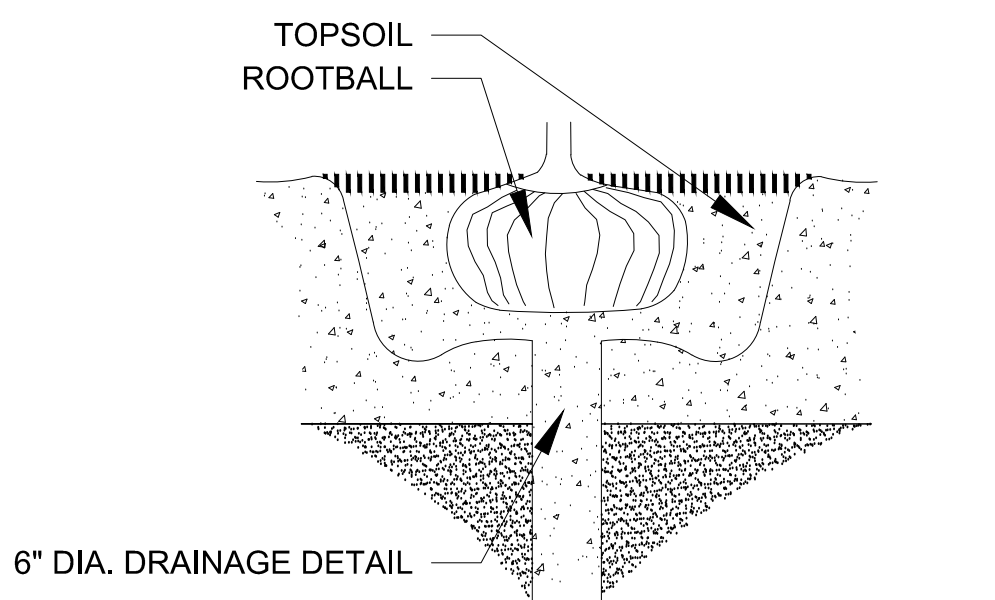


GROUNDCOVER PLANTING DETAIL
NOT TO SCALE

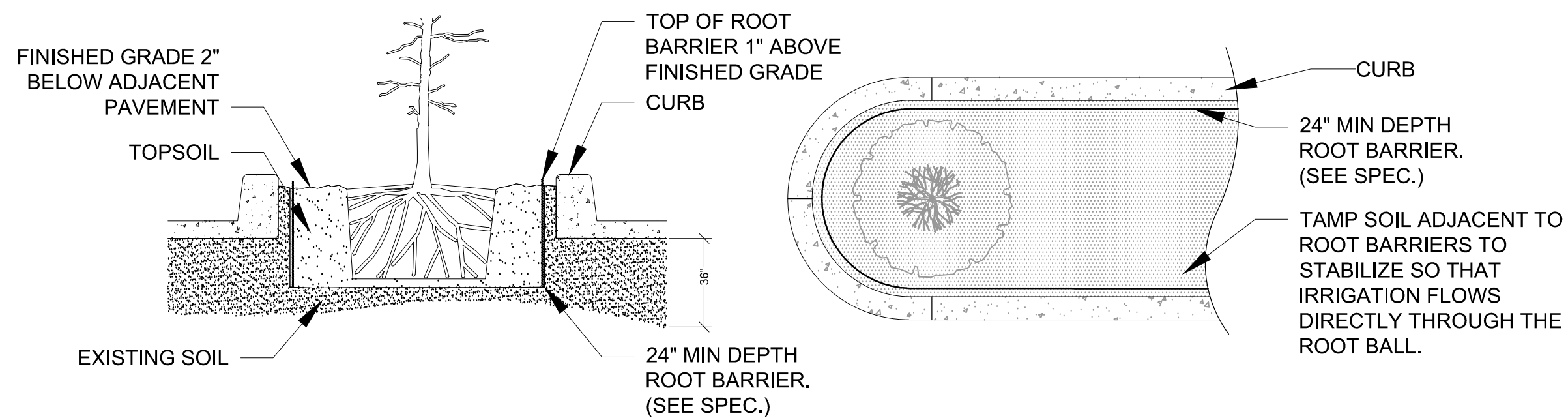


LANDSCAPE AREA PREPARATION DETAIL
NOT TO SCALE

- THIS DETAIL SHOWN DEPICTS A MEDIAN AND/OR LANDSCAPE ISLAND AND IS FOR GRAPHIC PURPOSES ONLY; SOIL PREPARATION SHALL APPLY TO ALL TREE, SHRUB, & GROUND COVER AREAS. THIS DOES NOT INCLUDE SOD AREAS
- * TOPSOIL SHALL BE NATURAL, FRIABLE, FINE LOAMY SOIL POSSESSING CHARACTERISTICS OF REPRESENTATIVE TOPSOIL IN THE VICINITY OF THE PROJECT SITE THAT PRODUCES HEAVY GROWTH.
 - TOPSOIL SHALL HAVE A PH RANGE OF 5.5-7.4, FREE FROM SUBSOIL, WEEDS, LITTER, SODS, CLAY, STONES, STUMPS, ROOTS, TRASH, HERBICIDES, TOXIC SUBSTANCES, OR ANY OTHER MATERIAL WHICH MAY BE HARMFUL TO PLANT GROWTH, OR HINDER PLANTING OPERATIONS.
 - TOPSOIL SHALL CONTAIN A MINIMUM OF 3% ORGANIC MATERIAL.
 - TOPSOIL MUST PERCOLATE WATER AT A RATE OF 1" PER HOUR (SEE ALSO DRAINAGE TESTING DETAIL FOR TREES)
 - LANDSCAPE AREA SOILS SHALL BE APPROVED BY LANDSCAPE ARCHITECT/OWNER PRIOR TO PLANTING

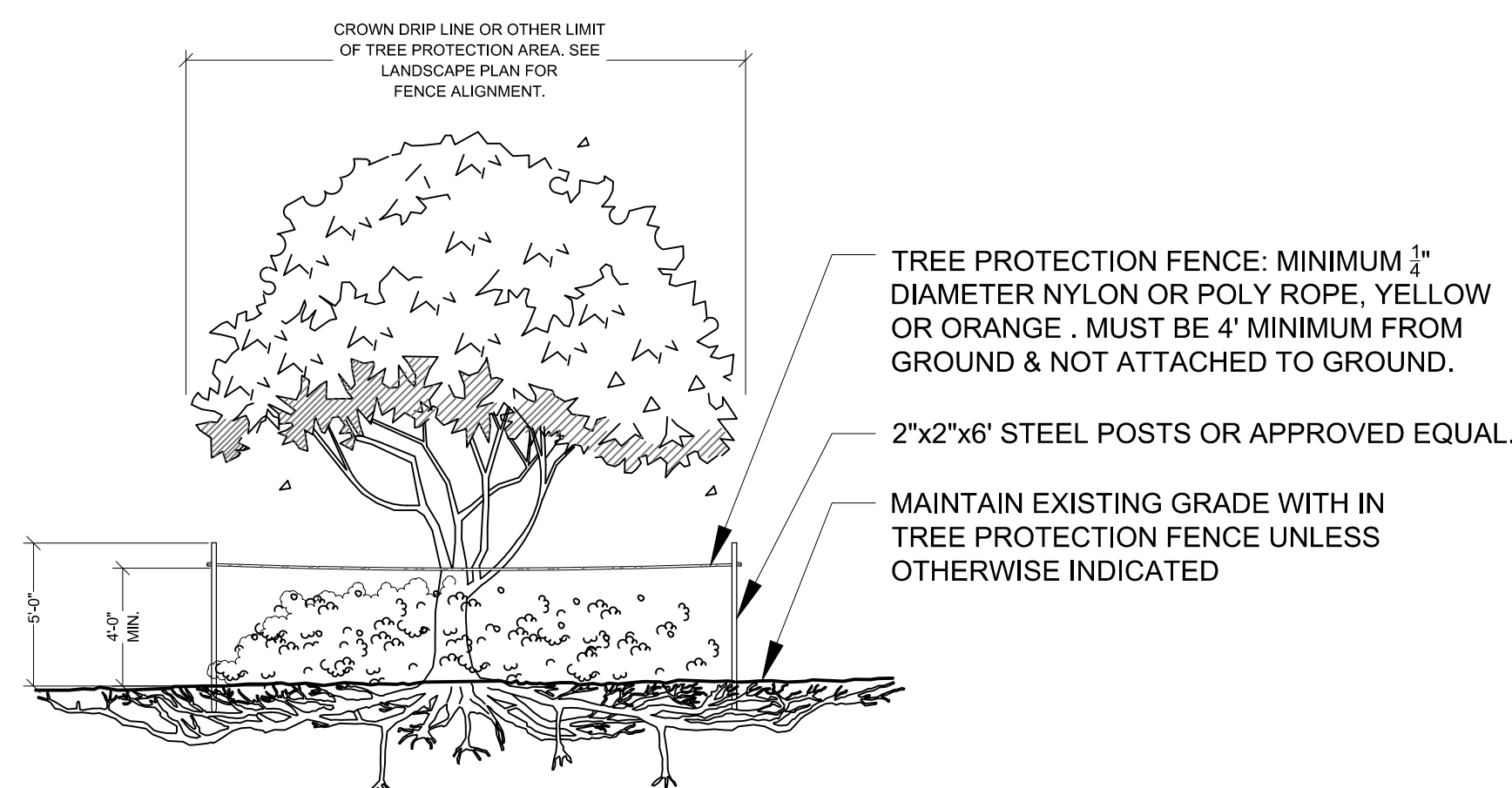


DRAINAGE TESTING DETAIL
NOT TO SCALE



SPECIAL APPLICATIONS ROOT BARRIER DETAIL
NOT TO SCALE

- NOTES:
 1- ROOT BARRIER SHALL BE "DEEPROOT ROOT BARRIER 24" DEPTH OR APPROVED EQUAL.
 2- ROOT BARRIER SHALL BE INSTALLED PER MANUFACTURER'S SPECIFICATIONS AND RECOMMENDATIONS.
 3- IF REQUIRED BY A MUNICIPALITY AND IN INSTANCES WHERE A TREE(S) IS PLANTED CLOSER THAN 5' FROM A SIDEWALK, OR STRUCTURE, A ROOT BARRIER(S) SHALL BE INSTALLED. ROOT BARRIERS FOR TREES SHALL BE INSTALLED ALONG THE EDGE OF THE STRUCTURE, PAVING OR CURB. THE ROOT BARRIER SHALL BE INSTALLED WITH 20 LF CENTERED FROM THE TRUNK FOR LARGE TREES AND 15 LF FOR SMALL TREES AND PALMS.



TREE PROTECTION BARRICADE
NOT TO SCALE

- NOTES:
 1- SEE LANDSCAPE PLAN FOR FENCE ALIGNMENT.
 2- NO PRUNING SHALL BE PERFORMED EXCEPT BY APPROVED ARBORIST.
 3- NO EQUIPMENT SHALL OPERATE INSIDE THE PROTECTIVE FENCING INCLUDING DURING FENCE INSTALLATION AND REMOVAL.

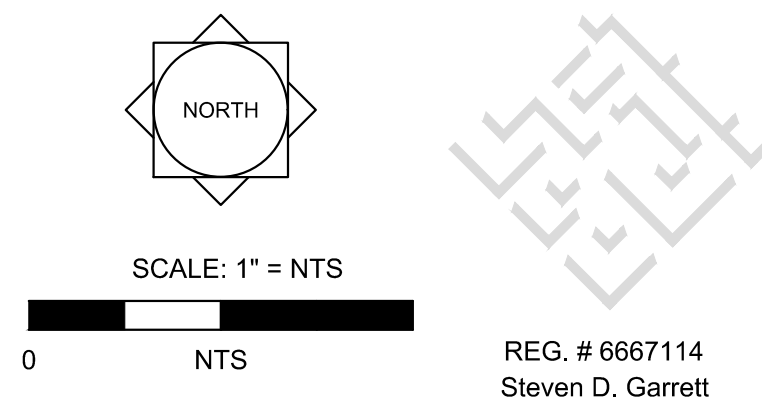
DRAINAGE TESTING/DRAINAGE CHANNEL REQUIREMENTS.

PRIOR TO PLANTING, ALL PLANTING PITS SELECTED FOR TESTING SHALL BE TESTED IN THE FOLLOWING MANNER.

- DIG EACH PLANTING PIT TO THE MINIMUM SPECIFIED SIZE.
- FILL PLANTING PIT WITH TWELVE INCHES (12") OF WATER. IF THE WATER LEVEL DROPS FOUR (4") OR MORE WITHIN FOUR (4) HOURS, THE DRAINAGE IS SUFFICIENT AND A DRAINAGE CHANNEL IS NOT REQUIRED. IF THE WATER LEVEL DROPS LESS THAN FOUR INCHES (4") WITHIN THE FOUR (4) HOUR PERIOD, A DRAINAGE CHANNEL IS REQUIRED.
- WHERE REQUIRED, THE DRAINAGE CHANNEL MUST EXTEND DOWN THROUGH THE NON POROUS SOIL AND INTO POROUS SOIL. (SEE DETAIL)
- ALL MATERIAL REMOVED FROM THE DRAINAGE CHANNEL SHALL BE DISCARDED.
- WHEN BACKFILLING PLANTING PITS WITH NATIVE TOPSOIL, CARE MUST BE TAKEN TO KEEP THE CONSISTENCY OF THE SOIL MIX THE SAME THROUGHOUT THE PLANTING PIT AND DRAINAGE CHANNEL.

Port St Lucie, Florida
 P23-132
 PSLUSD# xx-xxx-xxx

Date	By	Description
04.01.26	EMA	Submittal



Designer	EMA	Sheet
Manager	SG	
Project Number	26-060	
Municipal Number	P23-132	
Computer File	26-060 - Wylder AIPP At Commercial - Submittal Site P	

LA2

