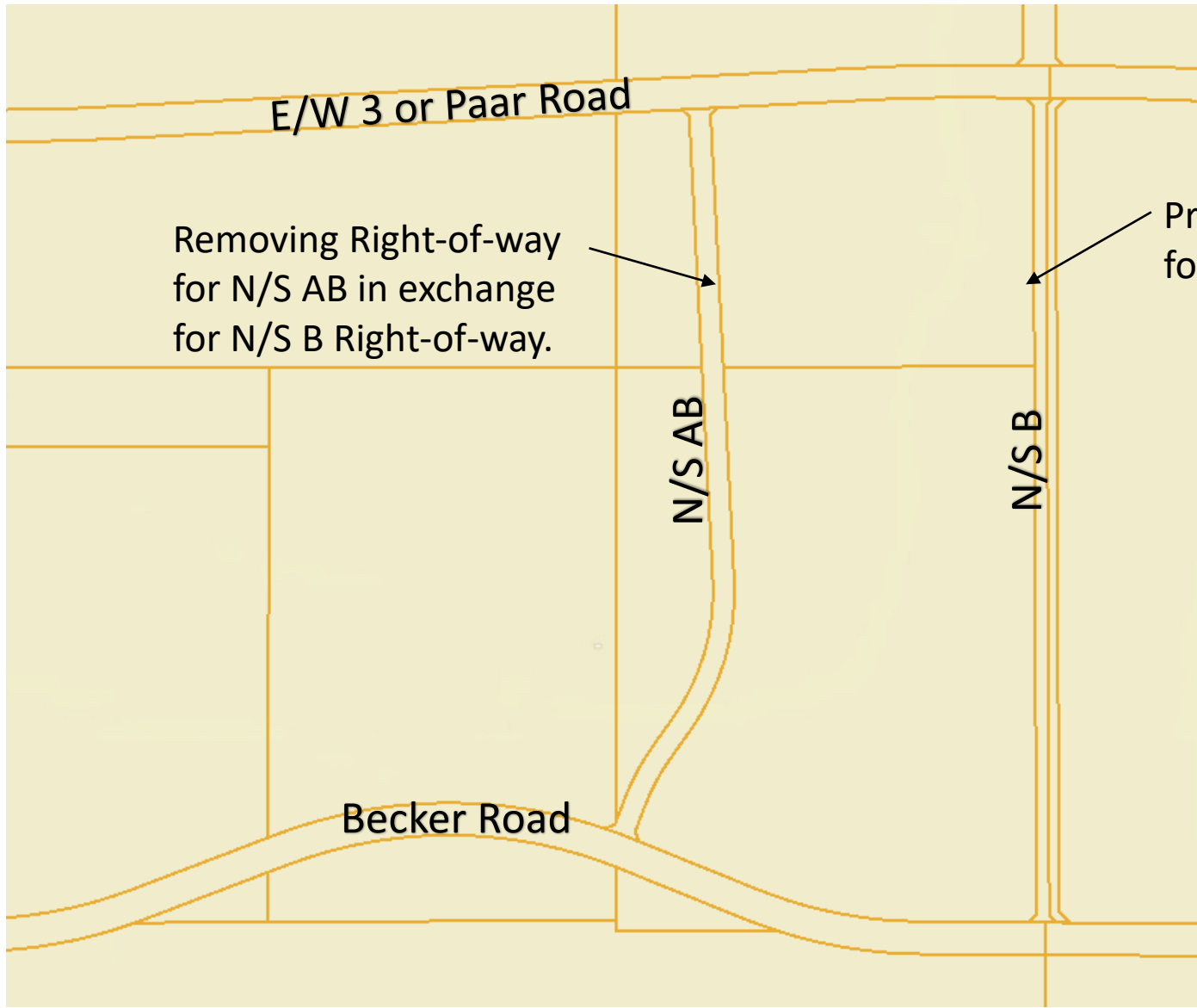


Right of Way Conveyance between ACR Acquisitions, LLC and City of Port St. Lucie

Readings of Ordinance
September 13, 2021 City Council Meeting





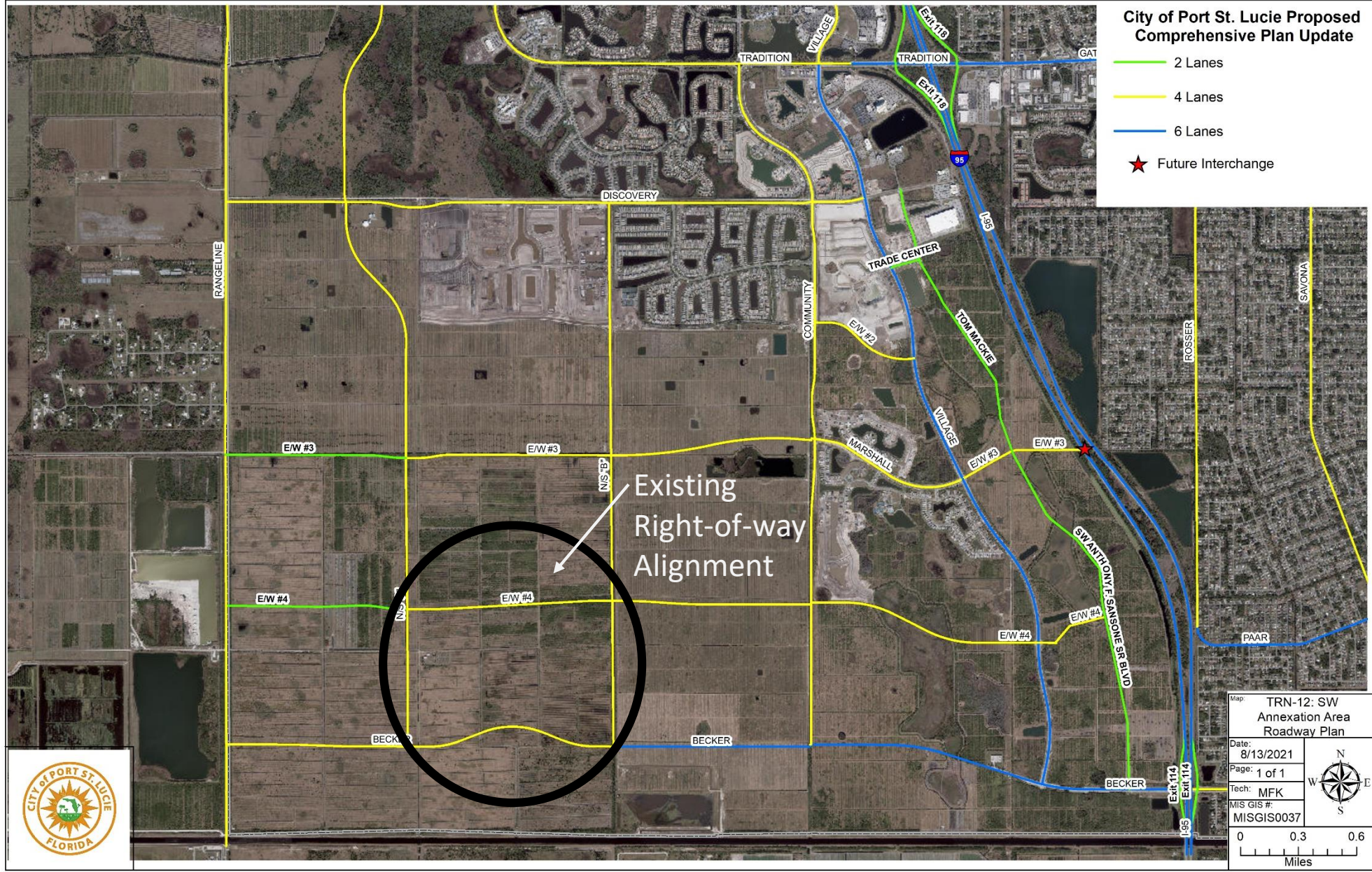
Removing Right-of-way for N/S AB in exchange for N/S B Right-of-way.

Proposing to add Right-of-way for N/S B to be 150' wide



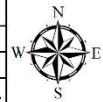
City of Port St. Lucie Proposed Comprehensive Plan Update

- 2 Lanes
- 4 Lanes
- 6 Lanes
- ★ Future Interchange



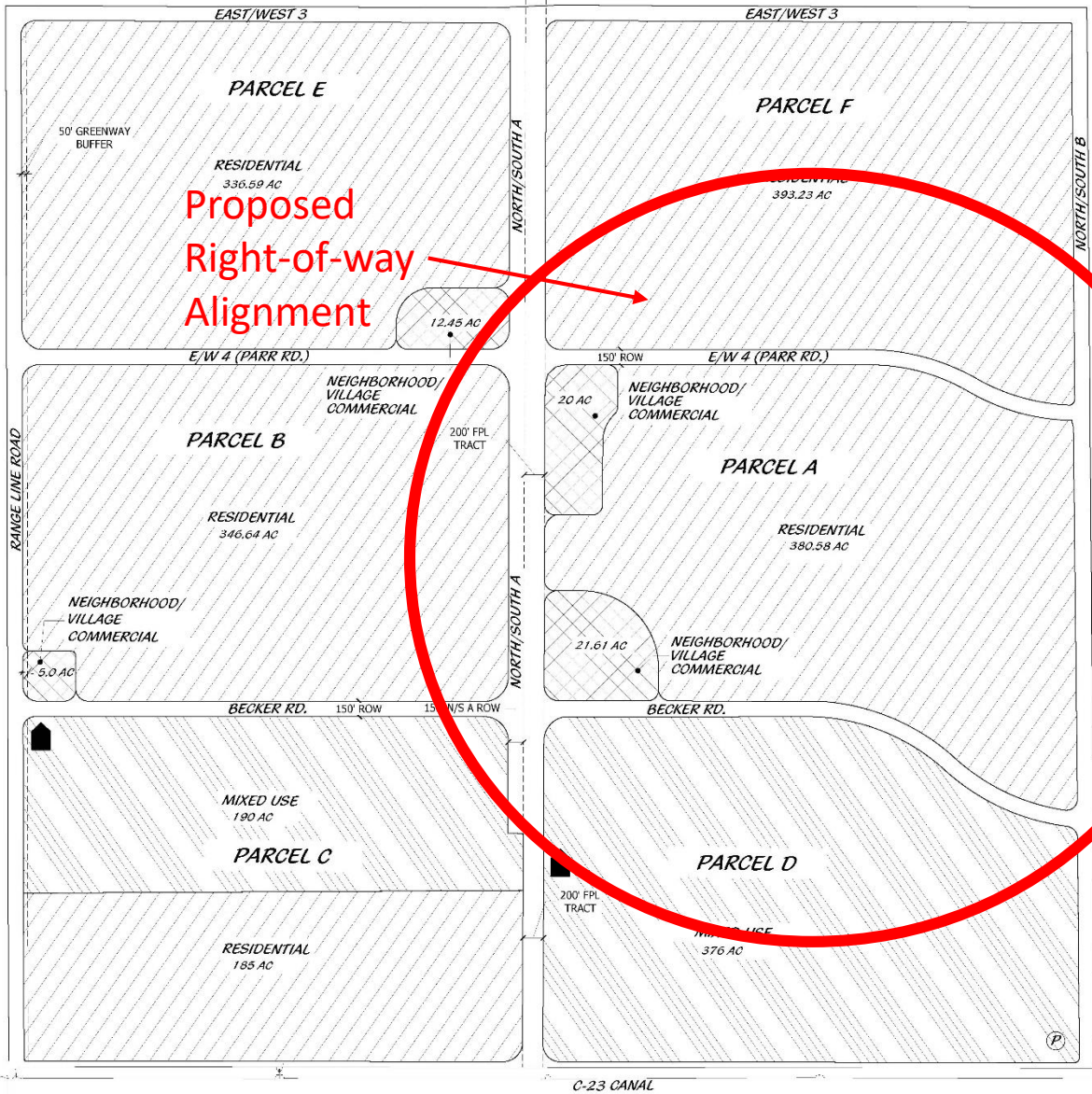
Existing
Right-of-way
Alignment

Map:	TRN-12: SW Annexation Area Roadway Plan
Date:	8/13/2021
Page:	1 of 1
Tech:	MFK
MIS GIS #:	MISGIS0037



0 0.3 0.6
Miles





LEGEND

- RESIDENTIAL**
INCLUDING SCHOOLS & SUPPORT FACILITIES, CIVIC, INSTITUTIONAL, PARKS/RECREATIONAL, PLACES OF WORSHIP, CONSERVATION/MITIGATION
- NEIGHBORHOOD / VILLAGE COMMERCIAL**
MIXED-USE INCLUDES RETAIL, OFFICE, INSTITUTIONAL, CIVIC, PARKS/RECREATIONAL, K-8 SCHOOL
- MIXED USE**
INCLUDING SCHOOLS & SUPPORT FACILITIES, CIVIC, INSTITUTIONAL, LIGHT INDUSTRIAL, PARKS/RECREATIONAL, PLAYGROUNDS
- 50 AC REGIONAL PARK
- K - 8 SCHOOL

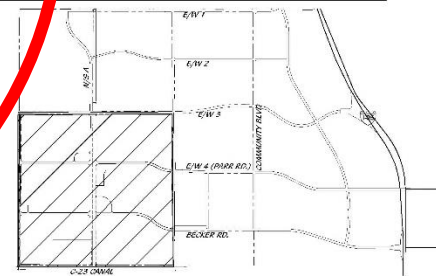
PROPOSED LAND USES

RESIDENTIAL	1876 AC
NEIGHBORHOOD/VILLAGE COMMERCIAL	57 AC
MIXED USE	566 AC
TOTAL AREA	2,499 AC

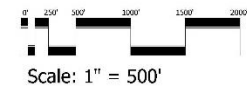
NOTE:

LOCATION AND CONFIGURATION OF ALL DEVELOPMENT PARCELS, LAKES, OPEN SPACE, RESIDENTIAL AND NON-RESIDENTIAL USES WILL BE FULLY DELINEATED DURING THE PLATTING PROCESS.
50-ACRE REGIONAL PARK SITE TO BE PROVIDED ADJACENT TO C-23 CANAL AND EAST PROPERTY LINE.
CONFIGURATION OF ALL PARK SITES TO BE DETERMINED AT THE TIME OF PUD PLAN APPROVAL.
IF REQUIRED UNDER CONDITION 51, TWO (2) 25-ACRE K-8 SCHOOL SITES WILL BE PROVIDED.

LOCATION MAP



**MAP H
MASTER PLAN**



Cotleur & Hearing

Landscape Architects
Land Planners
Environmental Consultants
1934 Commerce Lane
Suite 1
Apaltee, Florida 33468
981.747.8330 • Fax 747.1377
www.cotleurhearing.com
Lic# LC-0000239

WILSON GROVE

Saint Lucie, Florida

DESIGNED	EJF
DRAWN	SCM
APPROVED	EJF
DWG NUMBER	20-0518
DATE	06-26-21
REVISIONS	

SHEET 1 OF 1

