

### ELEVATION NOTES

- REFERENCE SHEET A-001 FOR GENERAL CONDITIONS AND ADDITIONAL REQUIREMENTS AFFECTING THIS WORK.
- FINISH FLOOR DATUM (REFERENCE) = 0'-0" IS TO TOP OF SLAB. REFER TO CIVIL DRAWINGS FOR ACTUAL FINISH FLOOR ELEVATION.
- ALL PRE-MANUFACTURED TRIM, MOULDINGS, CLADDING & COMPONENTS SHALL BE FASTENED & ADHERED TO BUILDING PER MANUFACTURER SPECIFICATIONS TO WITHSTAND DESIGN WIND PRESSURE IDENTIFIED ON STRUCTURAL DRAWINGS.
- COORDINATE WITH ARCHITECT THE LOCATION OF ALL ADDITIONAL CONTROL JOINTS REQUIRED BUT NOT INDICATED ON PLANS.
- ALL EXTERIOR SURFACES TO BE PAINTED IN FIELD OR BE PROVIDED WITH FACTORY OR SHOP APPLIED FINISH AS REQUIRED. ALL COLORS SHALL BE SELECTED BY ARCHITECT, APPROVED BY OWNER.
- COLOR AND CANOPY DESIGN PER TENANT'S APPROVAL. CANOPIES SHALL NOT DRAIN ONTO PEDESTRIAN AREAS.
- DRIVE THROUGH CANOPY SHALL HAVE A MINIMUM 5'-0" PROJECTION FROM BUILDING PER TENANT'S DESIGN CRITERIA.

### ELEVATION FINISH LEGEND

CODE	MATERIAL	MANUFACTURER	DESCRIPTION	
			COLOR	NOTES
SP-1	STUCCO	LOCALLY SOURCED	SW 7015 "REPOSE GRAY"	
SP-2	STUCCO		SW 7031 "MEGA GREIGE"	
FT-1	FOAM CORNICE TRIM	LOCALLY SOURCED	SW 7067 "CITYSCAPE"	
FT-2	FOAM TRIM BAND		SW 7015 "REPOSE GRAY"	
WA-1	WOOD PANEL SYSTEM	RESAWN TIMBER CO.	ABODO	
MTL-1	METAL COPING	LOCALLY SOURCED	SW 7067 "CITYSCAPE"	
MTL-2	ALUMINUM STOREFRONT SYSTEM		BLACK ANODIZED	
MTL-3	HOLLOW METAL FRAME	LOCALLY SOURCED	SW 7067 "CITYSCAPE"	
MTL-4	PRE-ENGINEERED METAL CANOPY		BLACK ANODIZED	
MTL-5	METAL STANDING SEAM ROOF		SLATE GRAY	

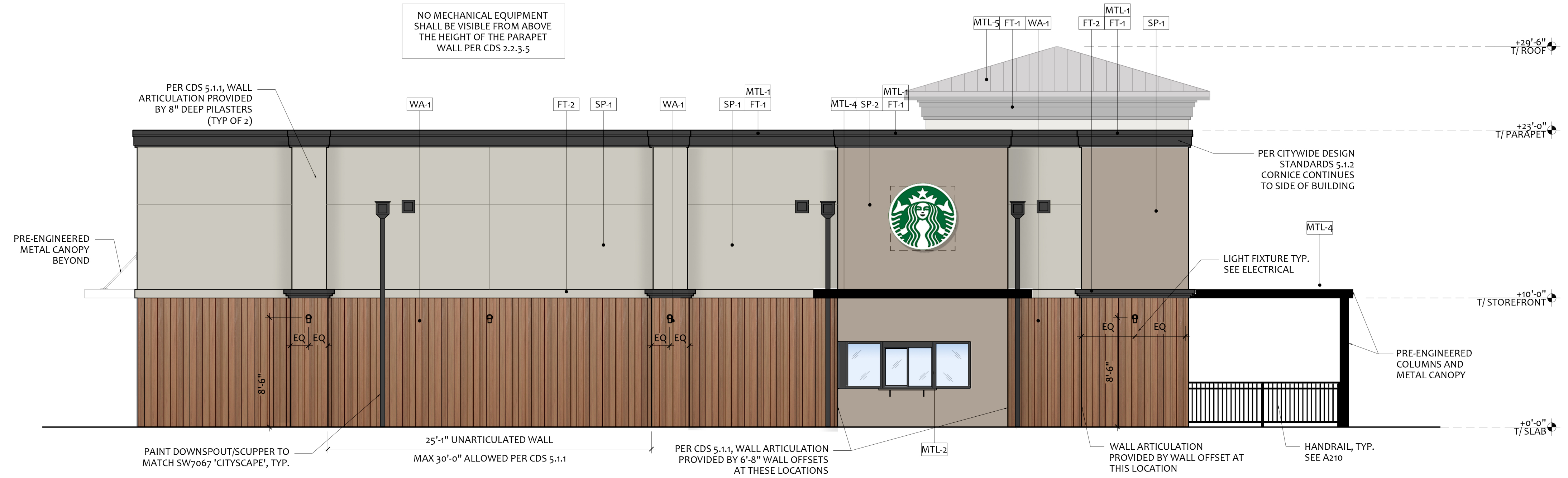
### CITYWIDE DESIGN STANDARDS

THE FOLLOWING DESIGN FEATURES ARE INCLUDED PER APPLICABLE PROVISIONS OF THE PORT ST. LUCIE CITYWIDE DESIGN STANDARDS (CDS).

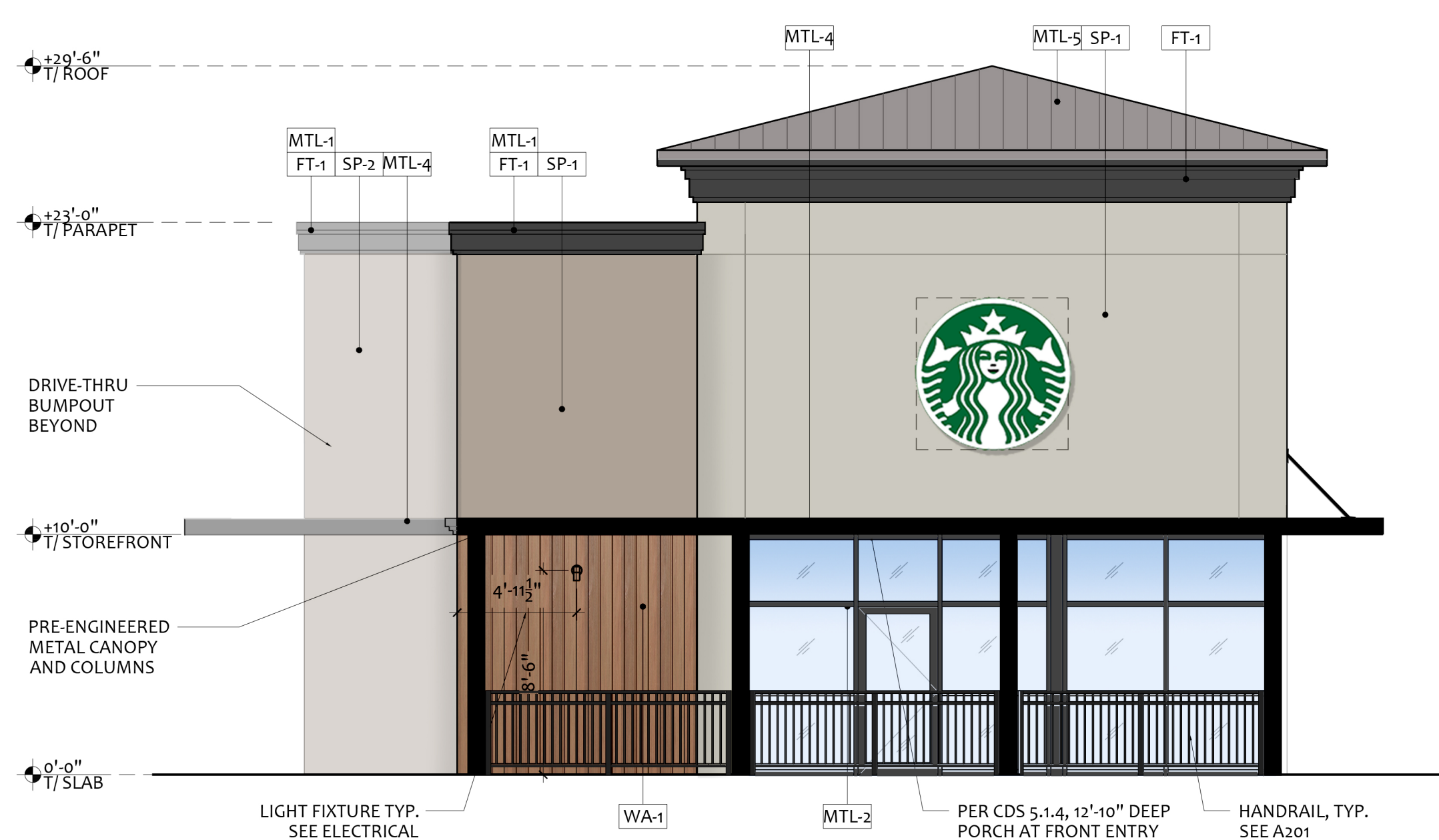
- PER 5.1.1: MAXIMUM UNARTICULATED FRONT WALL LENGTH: 20'-0"  
ACTUAL FRONT WALL ARTICULATION: FULLY ARTICULATED  
MAX UNARTICULATED SIDE WALL LENGTH: 30'-0"  
LONGEST ACTUAL UNARTICULATED SIDE WALL LENGTH: 25'-4"
- PER 5.1.2: CORNICE CONTINUES ALL THE WAY AROUND THE BUILDING. MID-HEIGHT BANDING DETAIL CONTINUES ON SIDE FACADES AND WRAPS CORNER TO REAR FACADE.
- PER 5.1.3: BUILDING IS ON AN OUTPARCEL LOT, SEE REAR ELEVATION FOR REQUIRED REAR FACADE ARTICULATION
- PER 5.1.4: FRONT ENTRANCE IS WITHIN A COVERED FRONT PORCH SEATING AREA, MAIN SIDE ENTRANCE IS UNDER A CANOPY.
- PER 5.1.5 SIX APPROVED DESIGN ELEMENTS FROM CHAPTER 10 ARE REQUIRED. THE FOLLOWING ELEMENTS ARE INCLUDED:  
1. COVERED PORCH/PATIO AREA  
2. CANOPY / AWNING  
3. EXPRESSION LINES  
4. SQUARE COLUMNS SPACED NO GREATER THAN 1.5X HEIGHT OF COLUMN ALONG NORTHWEST FACADE  
5. "WOOD-STYLE" RAILING (PICKET STYLE, MADE OF ALUMINUM)  
6. PATIO PAVERS - GEM PAVERS, 4X8 HERRINGBONE PATTERN, COLOR: CHARCOAL
- PER 5.2.1: MINIMUM GLAZED PORTION OF FRONT FACADE: 30%  
ACTUAL GLAZED PORTION OF FRONT FACADE: 42%
- PER 5.3.1: THIS BUILDING FACES AN ARTERIAL ROAD.  
MINIMUM BUILDING HEIGHT: 22'-0"  
ACTUAL BUILDING HEIGHT: 23'-0"
- PER 5.4.1: PEAKED ROOF ELEMENT WITH MIN. 14" CORNICE IS PROVIDED
- PER 5.4.2: ROOF MECHANICAL EQUIPMENT IS FULLY SCREENED BY PARAPETS. PARAPETS ARE GREATER THAN 24" TALL



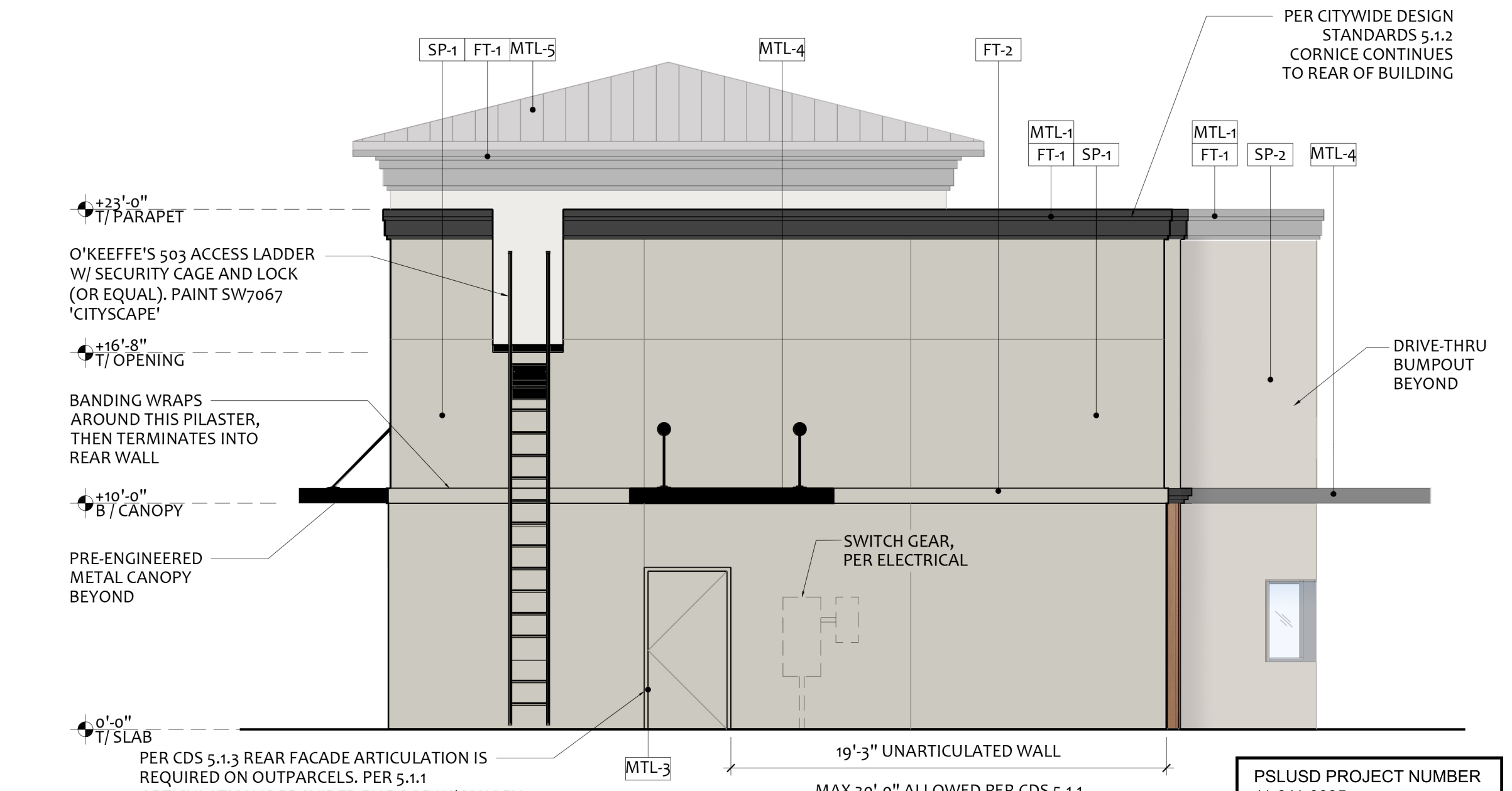
01 SOUTHEAST ELEVATION  
3/16" = 1'-0"



02 NORTHWEST ELEVATION  
3/16" = 1'-0"



03 SOUTHWEST ELEVATION  
3/16" = 1'-0"



04 NORTHEAST ELEVATION  
3/16" = 1'-0"



www.cphcorp.com

**A Full Service  
A & E Firm**

1011 E. COLONIAL DR #307  
ORLANDO, FLORIDA 32803  
Ph: (407) 745-5300

Plans Prepared By:  
CPH, LLC.

State of Florida Licenses:  
Architect No. AA260928  
Engineer No. 3215  
Landscape No. LC2006288  
Surveyor No. 7143

TO THE BEST OF THE ARCHITECT'S KNOWLEDGE, INFORMATION AND BELIEF, THIS DESIGN IS IN COMPLIANCE WITH APPLICABLE CODES AND LAWS

NO.	12.20.2023
DESIGNED:	From owner
DRAWN:	AA, JS, CM
CHECKED:	Maria Lopez
JOB NO.:	201.1118148.000

ARCHITECTURAL - EXTERIOR ELEVATIONS  
STARBUCKS EAST PORT PLAZA  
9100 U.S. HIGHWAY 1  
PORT ST. LUCIE, FL, 34952

THIS SHEET NOT VALID FOR CONSTRUCTION WITHOUT COMPLETE SET OF PLANS. SEE GENERAL NOTES FOR MASTER LEGEND

PSLUSD PROJECT NUMBER  
11-011-0035

Sheet No.

**A301**