



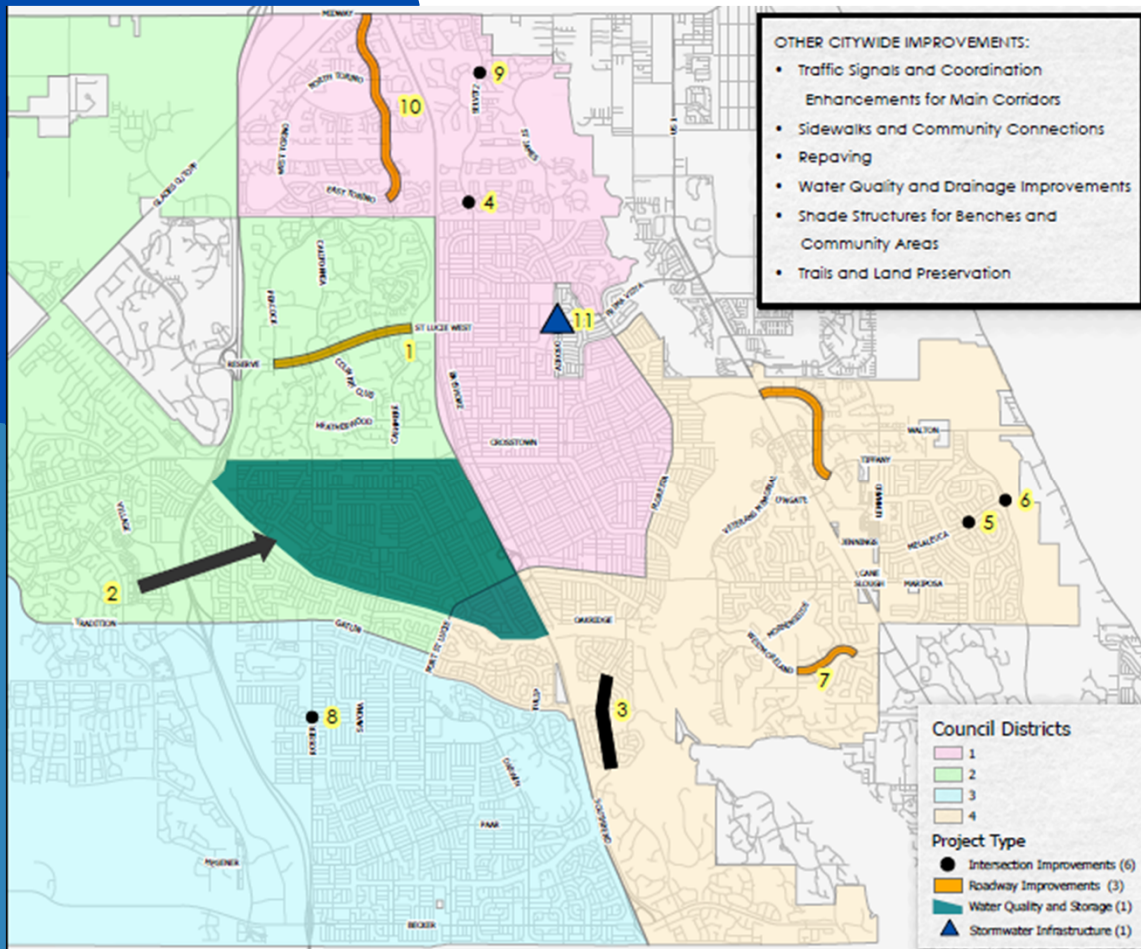
Half-Cent Sales Tax Projects

Future Projects 2029 to 2039

www.cityofpsl.com/salestax



Proposed Projects

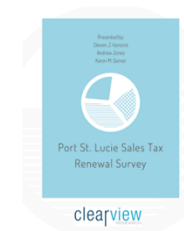
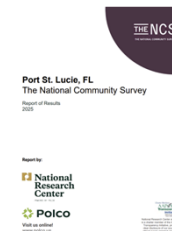


Future Sales Tax Opportunities

- St. Lucie West Boulevard Widening Project
- Oak Hammock Drainage Improvements
- Southbend Corridor Improvements
- Macedo/Selvitiz Improvements
- Melaleuca/Berkshire Improvements
- Melaleuca/Green River Improvements
- Sandpiper Traffic Calming and Safety Improvements
- Rosser/Dreyfuss Improvements
- Selvitiz/Peachtree Improvements
- Torino Parkway Widening Project
- Central Drainage Improvements
- Sidewalks and Community Connections
- Traffic Signals and Coordination Enhancements
- Repaving
- Water Quality and Drainage Improvements
- Shade Structures for Benches and Community Areas
- Trails and Land Preservation

Data Driven Transportation

- **City of Port St. Lucie**
 - 2045 Mobility Plan
 - 2050 Mobility Plan (Draft)
 - Comprehensive Plan
 - StreetLight Data Traffic Counts
 - PSLPD Crash Data
- **St. Lucie Transportation Planning Organization (TPO)**
 - Annual Traffic Counts
 - Long Range Transportation Plan (LRTP)
 - Congestion Management Process (CMP)
 - FDOT Five Year Work Program
 - TPO List of Priority Projects (LOPP)
 - TPO Transportation Improvement Program (TIP)
- **Resident Engagement**
 - Citizen Summit
 - National Community Survey
 - Sales Tax Renewal Survey



Corridor Improvements

Traffic Volumes					
Project	Limits	Type	TPO AADT	StreetLight AADT	Crash Data
St. Lucie West Blvd.*	NW Peacock to NW Cashmere Blvd.	4-lane to 6-lane	41950	35602	1943
SW Crosstown Pkwy.	SW Village Pkwy. to SW Commerce Centre Dr.	4-lane to 6-lane	27500	28321	122
NW Bayshore Blvd.**	Prima Vista Blvd. to NW Selvitz Rd.	2-lane to 4-lane	16614	14313	271
SW California Blvd.	SW Del Rio Blvd. to SW Crosstown Pkwy.	2-lane to 4-lane	16500	16099	249
SW Cashmere Blvd.	SW Crosstown Pkwy. to St. Lucie West Blvd.	2-lane to 4-lane	14500	12292	436
SW Savona Blvd.*	SW Gatlin Blvd. to SW California Blvd.	2-lane to 4-lane	14499	15592	429
SE Southbend Blvd.*	SE Becker Rd. to SE Eagle Dr.	2-lane to 4-lane	14250	11919	118
SW California Blvd.	SW Savona Blvd. to SW Del Rio Blvd.	2-lane to 4-lane	12780	12366	188
NW California Blvd.	NW Peacock Blvd. to NW W. Torino Pkwy.	2-lane to 4-lane	13309	11816	143
NW Cashmere Blvd.	St. Lucie West Blvd. to NW E. Torino Pkwy.	2-lane to 4-lane	13199	12717	146
NW E. Torino Pkwy.*	NW Cashmere Blvd. to NW Midway Rd.	2-lane to 4-lane	13013	11067	146
SW California Blvd.	SW Savona Blvd. to SW Del Rio Blvd. (west)	2-lane to 4-lane	12780	11748	110
SW Savona Blvd.*	SW Becker Rd. to SW Gatlin Blvd.	2-lane to 4-lane	12066	11601	466
NW Selvitz Rd.	NW Bayshore Blvd. to Midway Rd.	2-lane to 4-lane	12000	10126	189
SE Westmoreland Blvd.	SE Cambridge Dr. to SE Bakersfield St.	2-lane to 4-lane	11602	8451	97

* Feasibility Study Ongoing
 ** Design Ongoing

Intersection Improvements

Traffic Volumes / Crash Data			
Project Location	Type	StreetLight AADT*	Crash Data
SW Savona/Alcantarra	Roundabout	13259	22
NW Selvitz/Peachtree	Roundabout	11511	9
NW Selvitz/Macedo	Mobility	11156	24
SW Darwin/Kestor	Roundabout	11000	22
SW California/Cameo	Roundabout	10956	17
SE Green River/Charleston	TBD	9919	20
SW Rosser/Dreyfuss	Roundabout	9605	16
SW Tulip/Paar	Roundabout	8971	8
SE Green River/Melaleuca	TBD	8451	9
SE Melaleuca/Camden	TBD	8010	8
SE Thornhill/Sandia	TBD	6842	13
SE Melaleuca/Berkshire	TBD	5963	14
SE Sandia/Lakehurst	TBD	3740	7

*Intersection Traffic Data compiled from StreetLight Data. TPO does not provide these data points.

Survey Results

2025 National Community Survey

Question:

"The City is considering a ballot initiative for November 2026 to renew the existing half-cent sales tax for an additional ten years. This tax has funded road, sidewalk, and water quality projects since 2018. Below are potential projects identified through prior resident surveys and the Citizen Summit. To what extent do you support or oppose using this sales tax to fund each project in the future if it is approved?"

Responses:

- | | |
|---|--|
| • "Improve traffic flow through widening roadways including St. Lucie West Blvd." | Strongly support 60%
Somewhat support 25% |
| • "Improve traffic flow through widening roadways including Torino Pkwy." | Strongly support 49%
Somewhat support 26% |
| • "Improve traffic flow through intersection improvements and roundabouts on key corridors including Southbend; Rosser/Dreyfuss; Selvitz/Peachtree; California/Cameo; Crosstown/Cashmere" | Strongly support 57%
Somewhat support 29% |
| • "Improve connectivity and pedestrian safety through upgrading sidewalks and roundabouts in the Sandpiper Neighborhood." | Strongly support 47%
Somewhat support 32% |
| • "Implement citywide traffic signal pre-emption systems to support emergency vehicle lifesaving response times" | Strongly support 62%
Somewhat support 27% |
| • "Acquire land for additional parks, green spaces, water quality, etc." | Strongly support 63%
Somewhat support 27% |
| • "Stormwater draining improvements to reduce flooding and increase beautification at Savona/California, Elkhorn Basin & Thornhill Dr, and throughout central Port St. Lucie." | Strongly support 64%
Somewhat support 30% |

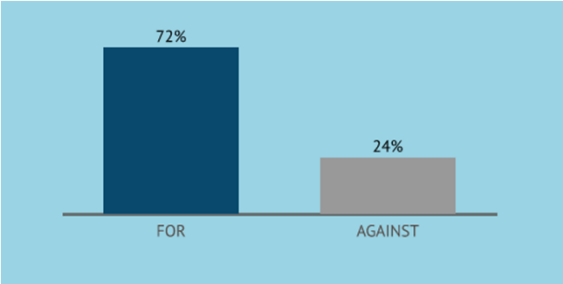
Survey Results

2025 Port St. Lucie Sales Tax Renewal Survey

Question:

Extension of Existing Sales Surtax for Public Safety and Roadway Infrastructure

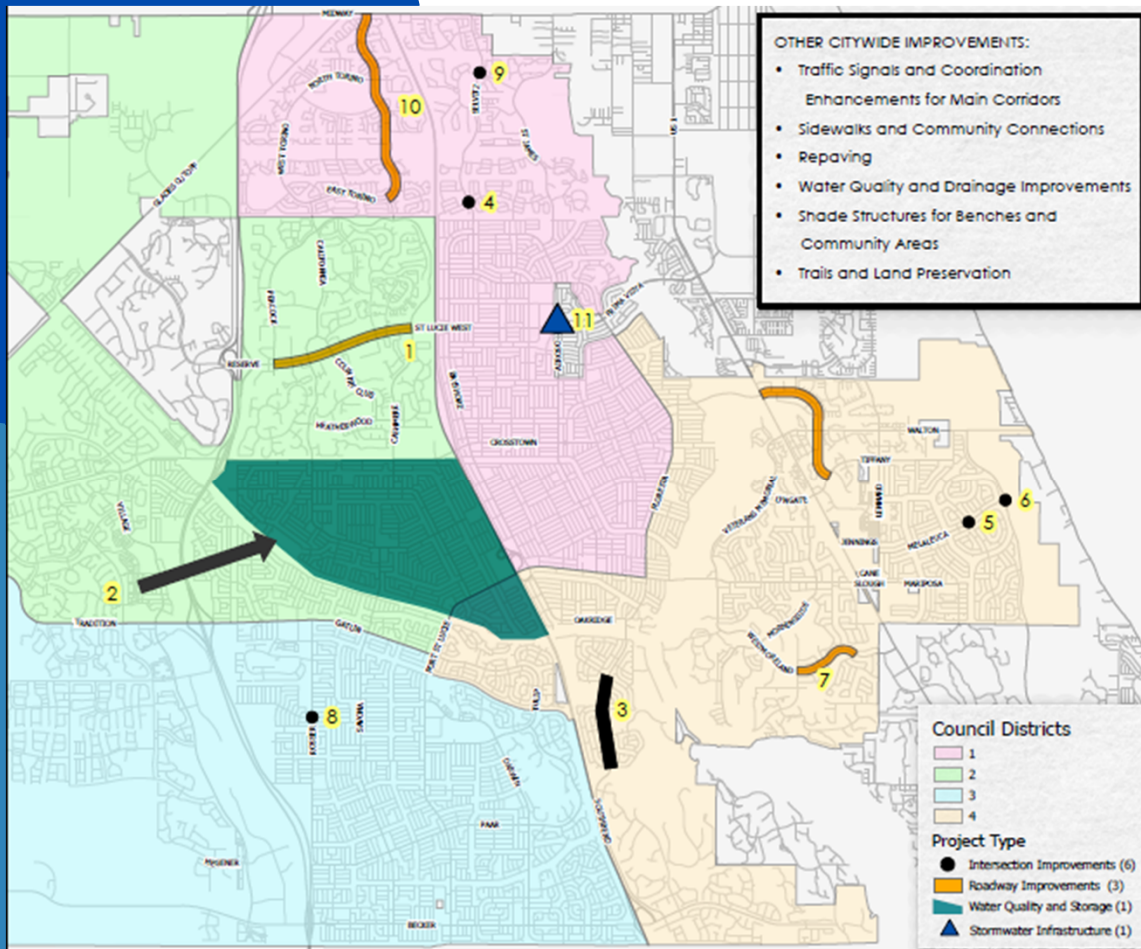
“To fund projects to improve local roads, reduce traffic congestion, add sidewalks, improve local water quality, including the Lagoon, reduce neighborhood flooding and similar uses under Florida law and seek matching funds for these purposes, shall St. Lucie County extend the existing half-cent sales tax, for ten years, with expenditures reviewed by an independent citizens committee ensuring dollars are spent fairly throughout Port St. Lucie, Fort Pierce, St. Lucie Village and St. Lucie County?”



Responses:

- “The money from this tax would go towards reducing traffic congestion in Port St. Lucie” More likely 80%
- “The money from this tax will be used for widening and improving our roads” More likely 79%
- “The money from this tax would go towards reducing neighborhood flooding” More likely 75%
- “The money from this tax would go towards upgrading and improve sidewalks” More likely 73%
- “The money from this tax would go towards reducing 911 response times” More likely 73%

Proposed Projects

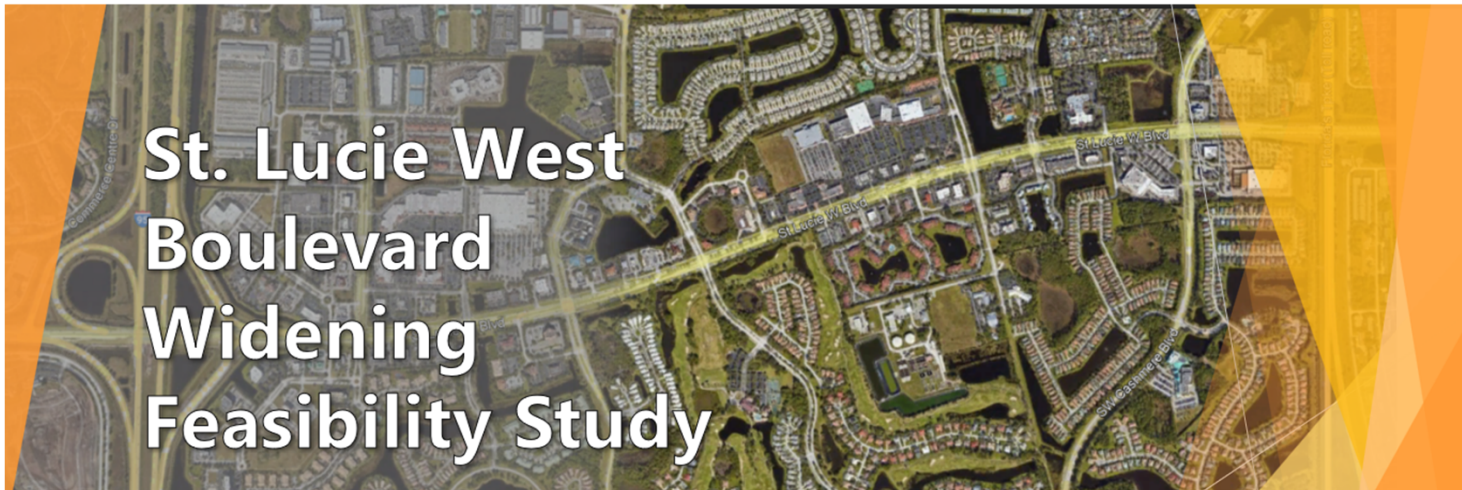


Future Sales Tax Opportunities

- St. Lucie West Boulevard Widening Project
- Oak Hammock Drainage Improvements
- Southbend Corridor Improvements
- Macedo/Selvitiz Improvements
- Melaleuca/Berkshire Improvements
- Melaleuca/Green River Improvements
- Sandpiper Traffic Calming and Safety Improvements
- Rosser/Dreyfuss Improvements
- Selvitiz/Peachtree Improvements
- Torino Parkway Widening Project
- Central Drainage Improvements
- Sidewalks and Community Connections
- Traffic Signals and Coordination Enhancements
- Repaving
- Water Quality and Drainage Improvements
- Shade Structures for Benches and Community Areas
- Trails and Land Preservation

St. Lucie West Boulevard Widening Project

- Preliminary study completed that outlined the need for improvements
- Final phase of the study is currently underway and Conceptual typical sections will be provided.
- Project Limits: Peacock Boulevard to Cashmere Boulevard
- Major commercial corridor for the City that experiences peak hour congestion
- Crashes are occurring along the corridor at a higher rate than the statewide average
- Widening would provide significant operational improvements



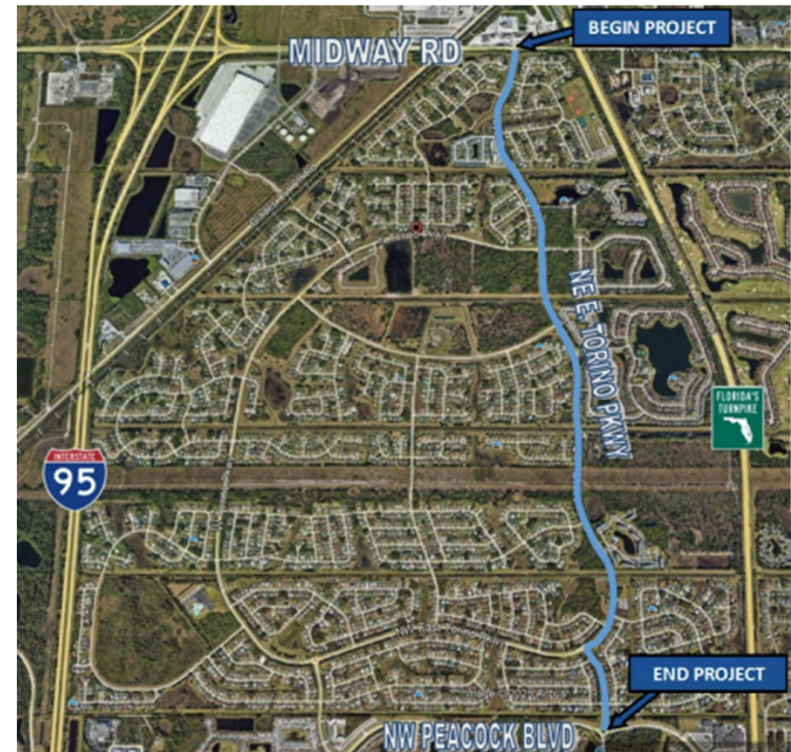
Southbend Corridor Improvements

- Southbend Boulevard between SW Oakridge Drive and SE Becker Road
- Identified in the 2045 Mobility Study/Plan for proposed Improvements
- Currently completing a feasibility study that will include conceptual design and traffic analysis
- Conceptual locations for Intersection improvements include: East/West Snow Road, West Snow Road at Eagle Drive and South Eagle Drive



East Torino Parkway Improvements

- NW East Torino Parkway
 - NW Cashmere Boulevard from NW Peacock Boulevard to NW East Torino Parkway
 - NW East Torino Parkway from NW Cashmere Boulevard to W Midway Road
- Project identified in the 2045 Mobility Study
- Feasibility Study currently underway to include an engineering, safety and roadway analysis
- Community Outreach will take place as part of the feasibility study
- Identify and evaluate multimodal options

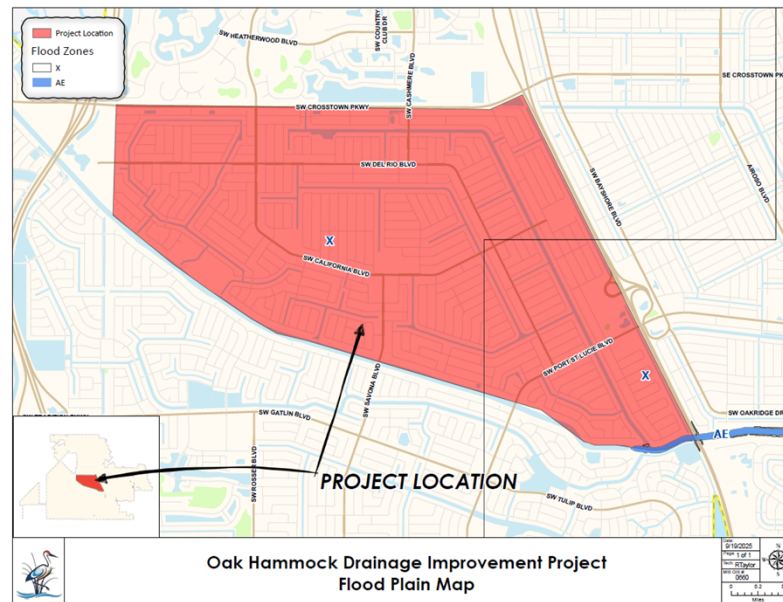


Oak Hammock Drainage Improvements



Stormwater infrastructure is a critical asset, helping communities to avoid flooding impacts. Flooding occurs in this area during high-intensity wet weather events that generate several inches of rain in a short amount of time. Drainage in this area is challenged by low-lying topography, a shallow water table and soils with low infiltration rates. The project will:

- Enhance public safety by reducing the risk of flooding
- Protect the environment through improved water quality
- Help minimize disruption and recovery costs after major storms





Thank you!

With Sales Tax We Can Do More to Support Our Community

www.cityofpsl.com/salestax

