

# EXHIBIT "A"

## ABANDON NORTH 10 FEET OF 20' UTILITY/ DRAINAGE EASEMENT SKETCH OF DESCRIPTION

A PORTION OF THE NW ONE-QUARTER OF SECTION 36, TOWNSHIP 37 SOUTH, RANGE 39 EAST



SCALE: 1"=30'

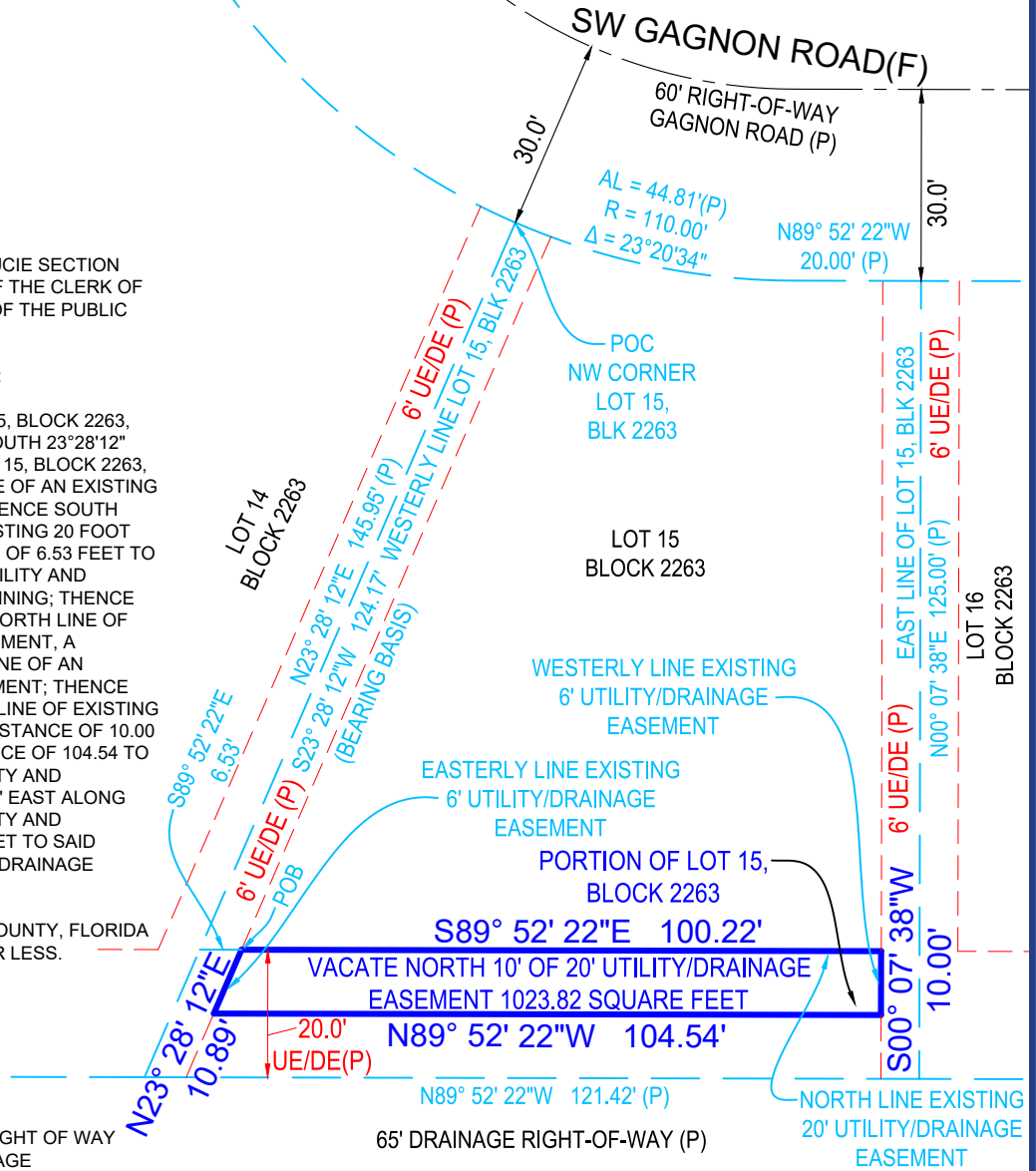
### LEGAL DESCRIPTION:

A PORTION OF LOT 15, BLOCK 2263, PORT ST. LUCIE SECTION THIRTY THREE AS RECORDED IN THE OFFICE OF THE CLERK OF THE CIRCUIT COURT IN PLAT BOOK 15, PAGE 1 OF THE PUBLIC RECORDS OF SAINT LUCIE COUNTY, FLORIDA.

MORE PARTICULARLY DESCRIBED AS FOLLOWS:

COMMENCE AT THE NW CORNER OF SAID LOT 15, BLOCK 2263, PORT ST. LUCIE SEC THIRTY THREE; THENCE SOUTH 23°28'12" WEST ALONG THE WESTERLY LINE OF SAID LOT 15, BLOCK 2263, A DISTANCE OF 124.17 FEET TO THE NORTH LINE OF AN EXISTING 20 FOOT UTILITY AND DRAINAGE EASEMENT; THENCE SOUTH 89°52'22" EAST ALONG SAID NORTH LINE OF EXISTING 20 FOOT UTILITY AND DRAINAGE EASEMENT, A DISTANCE OF 6.53 FEET TO THE EASTERLY LINE OF AN EXISTING 6 FOOT UTILITY AND DRAINAGE EASEMENT AND THE POINT OF BEGINNING; THENCE CONTINUE SOUTH 89°52'22" EAST ALONG SAID NORTH LINE OF EXISTING 20 FOOT UTILITY AND DRAINAGE EASEMENT, A DISTANCE OF 100.22 FEET TO THE WESTERLY LINE OF AN EXISTING 6 FOOT UTILITY AND DRAINAGE EASEMENT; THENCE SOUTH 00°07'38" WEST ALONG SAID WESTERLY LINE OF EXISTING 6 FOOT UTILITY AND DRAINAGE EASEMENT, A DISTANCE OF 10.00 FEET; THENCE NORTH 89°52'22" WEST, A DISTANCE OF 104.54 TO SAID EASTERLY LINE OF EXISTING 6 FOOT UTILITY AND DRAINAGE EASEMENT; THENCE NORTH 23°28'12" EAST ALONG SAID EASTERLY LINE OF EXISTING 6 FOOT UTILITY AND DRAINAGE EASEMENT, A DISTANCE OF 10.89 FEET TO SAID NORTH LINE OF EXISTING 20 FOOT UTILITY AND DRAINAGE EASEMENT AND THE POINT OF BEGINNING.

SAID LANDS SITUATE AND BEING IN ST. LUCIE COUNTY, FLORIDA AND CONTAINS 1023.82 SQUARE FEET, MORE OR LESS.



### ABBREVIATIONS:

SR	STATE ROAD	R/W	RIGHT OF WAY
HWY	HIGHWAY	PG	PAGE
LB	LICENSED BUSINESS	POC	POINT OF COMMENCEMENT
STLCR	ST. LUCIE COUNTY RECORDS	POB	POINT OF BEGINNING
ORB	OFFICIAL RECORD BOOK	UE	UTILITY EASEMENT
PSM	PROFESSIONAL SURVEYOR MAPPER	DE	DRAINAGE EASEMENT
		(P)	PLAT
		(F)	FIELD

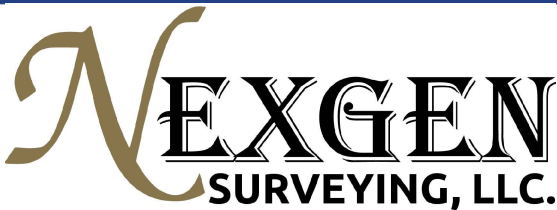
### NOTES:

1. NO SEARCH OF THE PUBLIC RECORD FOR THE PURPOSE OF ABSTRACTING TITLE WAS PERFORMED BY THIS OFFICE
2. BEARING BASIS: THE WESTERLY LINE OF LOT 15, BLOCK 2263, PORT ST. LUCIE SEC THIRTY THREE, WHICH BEARS N23°28'12"E PER PLAT BOOK 15, PG 1, ST. LUCIE COUNTY RECORDS.

PROJECT NO. 1000137218

SHEET 1 OF 1 (SKETCH OF DESCRIPTION)

DRAWN BY: KDM



5601 CORPORATE WAY, SUITE 103  
WEST PALM BEACH, FL 33407

PH: 561.508.6272 NexgenSurveying.com  
FAX: 561.508.6309 LB 8111

I HEREBY CERTIFY THAT THIS SKETCH OF DESCRIPTION MEETS OR EXCEEDS THE STANDARDS OF PRACTICE SET FORTH BY THE FLORIDA BOARD OF PROFESSIONAL SURVEYORS AND MAPPERS PER CHAPTER 5J-17, FLORIDA ADMINISTRATIVE CODE, PURSUANT TO SECTION 472.027, FLORIDA STATUTES.

