

Darwin Autism Charter School

Lot - 1

City of Port St. Lucie, Florida

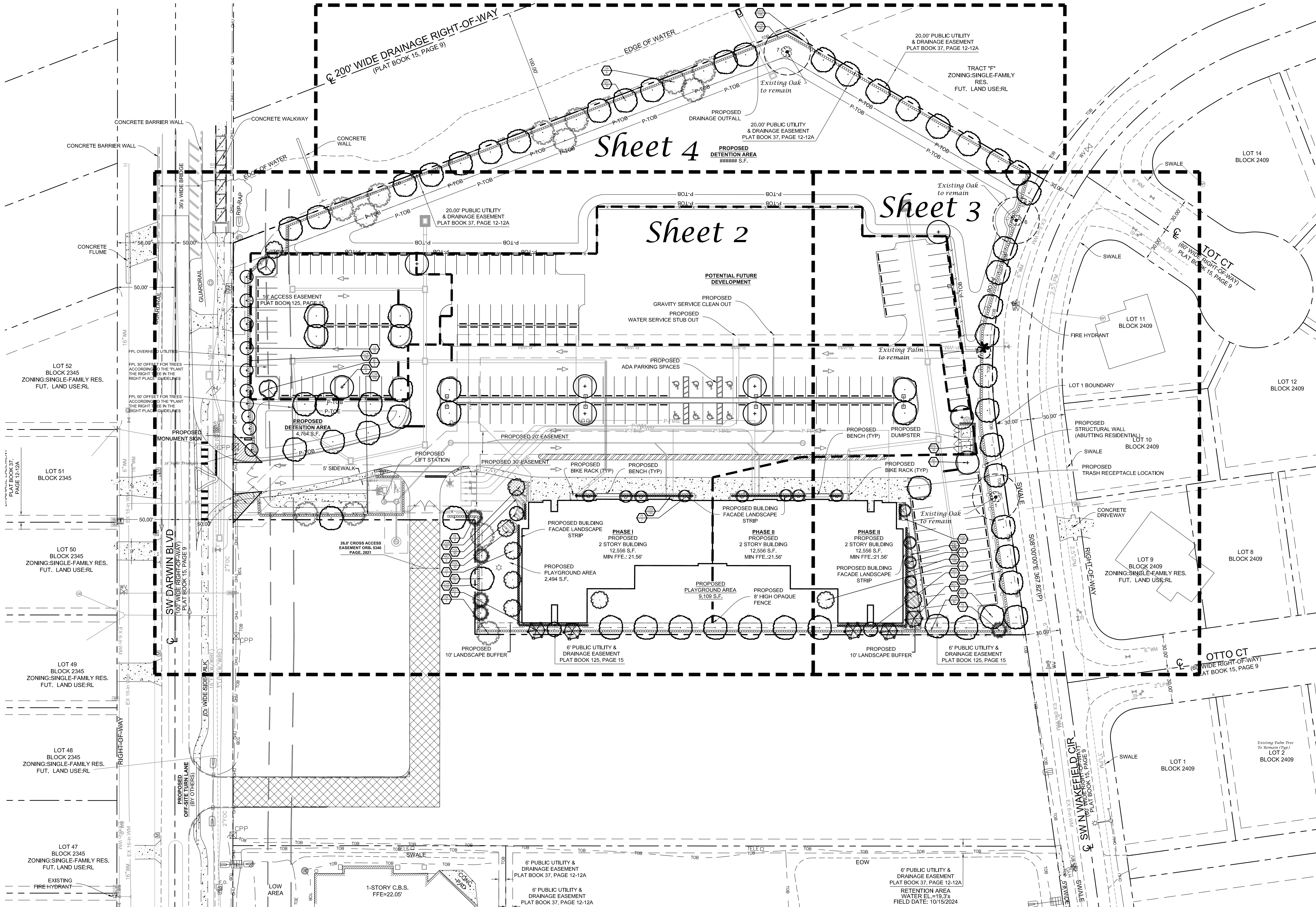
Jeffrey W. Smith, RLA
Florida Registration Number:
LA 0001635

Job No.	25-0103
Drawn By	JWS
Submittal Dates	7-15-2025 9-2-2025 9-10-2025

Revision Dates	
New Base	9-2-2025
City Comments	9-10-2025

These drawings are the property of the landscape architect and are not to be used for other projects except by written permission from the landscape architect. Report any discrepancies immediately to the landscape architect.

Sheet L-1 of 5
City Project Numbers: P 25-020



Port St. Lucie Utility Systems Department Notes

- No landscaping shall be planted in a manner that would adversely affect utility easements. Landscaping shall be in compliance with Chapter 154 of the City of Port St. Lucie Code of Ordinances, PSLUSD technical specifications and policies.
- All required landscape improvements must be inspected and approved by the City of Port St. Lucie prior to the issuance of a Certificate of Occupancy.
- Any existing landscaping, soil, or irrigation damaged or destroyed during the construction shall be replaced prior to the final inspection.
- All landscaping shall meet the latest PSLUSD Landscape Policy and shall not be placed in a manner that would create conflicts with the intended operation and maintenance of any existing utility.
- Trees shall not be planted within ten (10) feet of any PSLUSD underground infrastructure.
- No landscaping other than sod grasses shall be located within 5' of a PSLUSD appurtenance such as a water meter assembly, backflow device, fire hydrant or sewer cleanout, etc.

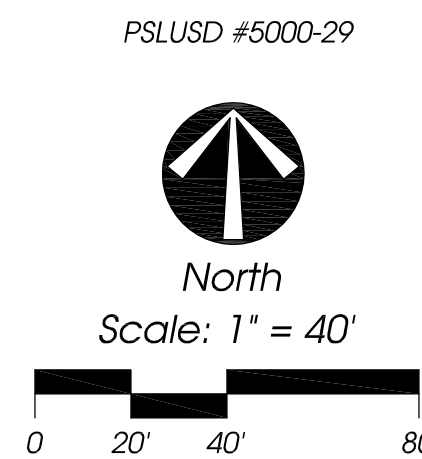
Port St. Lucie Engineering Department Notes

- The landscape plans meet the City's sight distance and clear zone requirements from Section 158.204 of the Code for 10' requirements.

General Notes

- No plant substitutions can be made without the City of Port St. Lucie's approval.
- All required landscape improvements must be inspected and approved by the City of Port St. Lucie prior to the issuance of a Certificate of Occupancy.
- Any existing landscaping, soil, or irrigation damaged or destroyed during the construction shall be replaced prior to the final inspection.
- All prohibited, exotic and invasive species shall be removed from the entire site prior to issuance of certificate of occupancy.
- Planting adjacent to fire hydrants is to have a minimum clear radius of 7.5' as required by the NFPA Uniform Fire Code Florida Edition 18.3.4.1 Hydrants. All fire hydrants and fire check valves shall have a minimum of 7.5' from the front and sides with 4' from the rear to all landscape material per the Florida Fire Prevention Code.

Landscape Plan



Darwin Autism Charter School

Lot - 1

City of Port St. Lucie, Florida

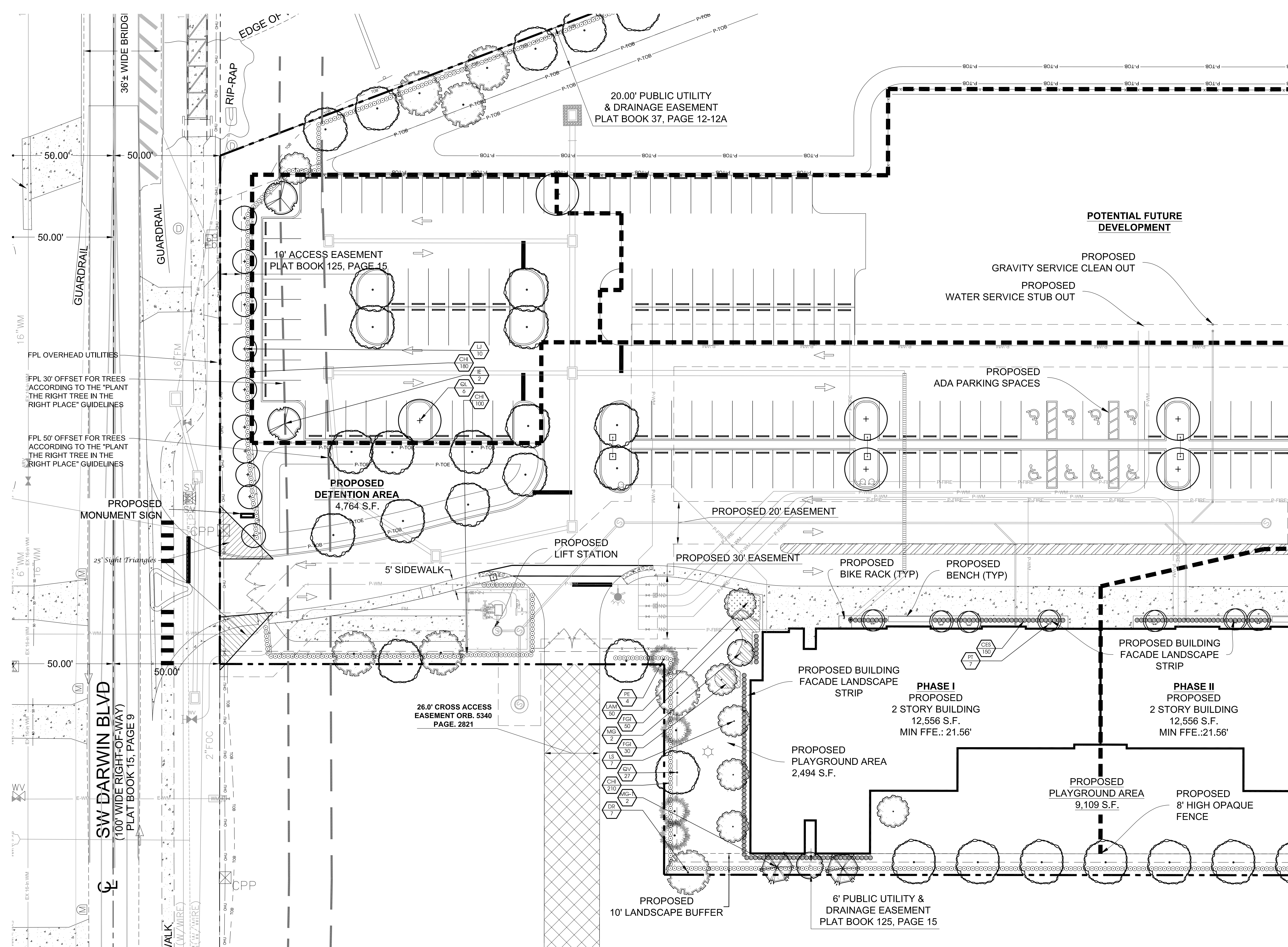
Jeffrey W. Smith, RLA
Florida Registration Number:
LA 0001635

Job No.	25-0103
Drawn By	JWS
Submittal Dates	7-15-2025 9-2-2025 9-10-2025

Revision Dates	
New Base	9-2-2025
City Comments	9-10-2025

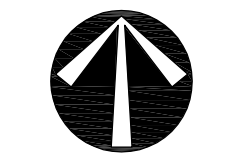
These drawings are the property of the landscape architect and are not to be used for other projects except by written permission from the landscape architect. Report any discrepancies immediately to the landscape architect.

Sheet **L-2** of **5**
City Project Numbers: P 25-020



Landscape Plan

PSLUSD #5000-29



Scale: 1" = 20'

0 10' 20' 40'

Darwin Autism Charter School

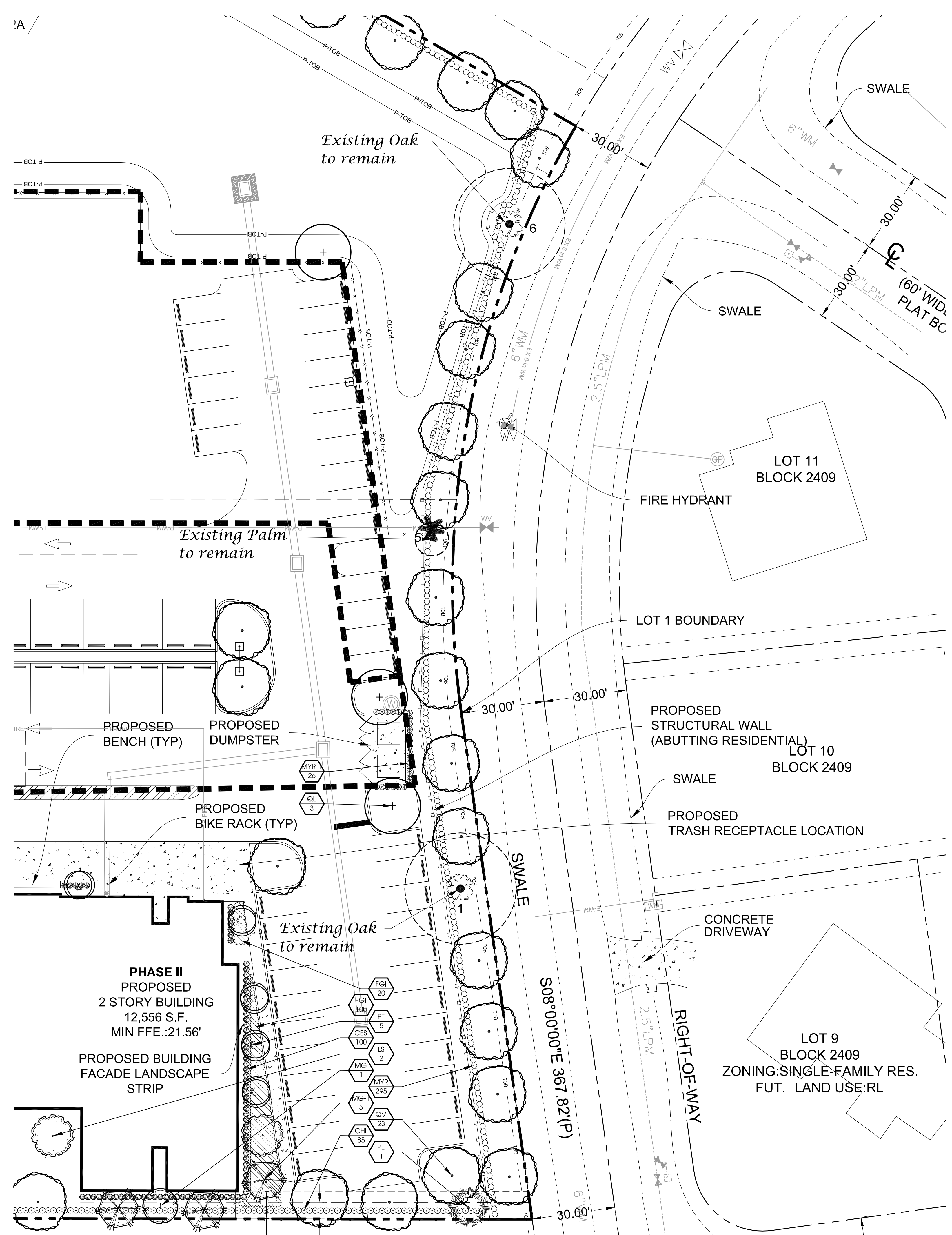
Lot - 1
City of Port St. Lucie, Florida

Jeffrey W. Smith, RLA
Florida Registration Number:
LA 0001635

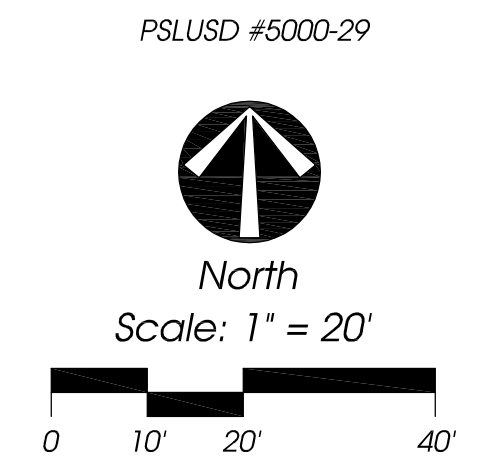
Job No.	25-0103
Drawn By	JWS
Submittal Dates	7-15-2025
	9-2-2025
	9-10-2025

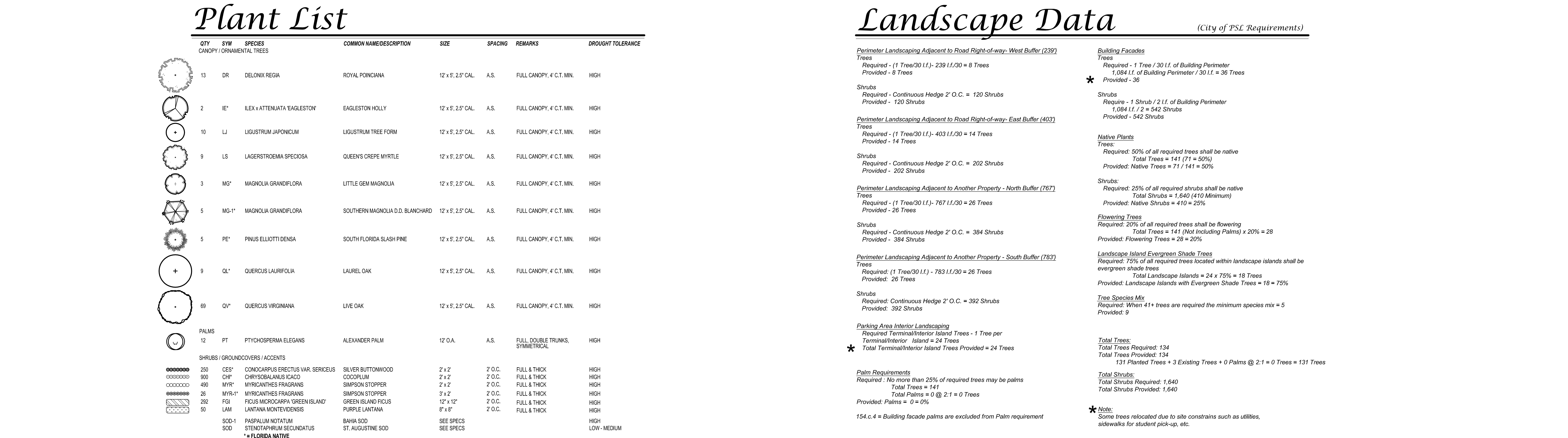
Revision Dates	
New Base	9-2-2025
City Comments	9-10-2025

These drawings are the property of the landscape architect and are not to be used for other projects except by written permission from the landscape architect. Report any discrepancies immediately to the landscape architect.



Landscape Plan





Landscape Data

(City of PSL Requirements)

Perimeter Landscaping Adjacent to Road Right-of-way- West Buffer (239')
Trees
 Required - (1 Tree/30 I.F.)- 239 I.F./30 = 8 Trees
 Provided - 8 Trees

Shrubs
 Required - Continuous Hedge 2' O.C. = 120 Shrubs
 Provided - 120 Shrubs

Perimeter Landscaping Adjacent to Road Right-of-way- East Buffer (403')
Trees
 Required - (1 Tree/30 I.F.)- 403 I.F./30 = 14 Trees
 Provided - 14 Trees

Shrubs
 Required - Continuous Hedge 2' O.C. = 202 Shrubs
 Provided - 202 Shrubs

Perimeter Landscaping Adjacent to Another Property - North Buffer (767')
Trees
 Required - (1 Tree/30 I.F.)- 767 I.F./30 = 26 Trees
 Provided - 26 Trees

Shrubs
 Required - Continuous Hedge 2' O.C. = 384 Shrubs
 Provided - 384 Shrubs

Perimeter Landscaping Adjacent to Another Property - South Buffer (783')
Trees
 Required: (1 Tree/30 I.F.) - 783 I.F./30 = 26 Trees
 Provided: 26 Trees

Shrubs
 Required: Continuous Hedge 2' O.C. = 392 Shrubs
 Provided: 392 Shrubs

Parking Area Interior Landscaping
 Required Terminal/Interior Island Trees - 1 Tree per
 Terminal/Interior Island = 24 Trees
 Total Terminal/Interior Island Trees Provided = 24 Trees

Palm Requirements
 Required : No more than 25% of required trees may be palms
 Total Trees = 141
 Total Palms = 0 @ 2:1 = 0 Trees
 Provided: Palms = 0 = 0%

Building Facades
Trees
 Required - 1 Tree / 30 I.F. of Building Perimeter
 1,084 I.F. of Building Perimeter / 30 I.F. = 36 Trees
 Provided - 36

Shrubs
 Required - 1 Shrub / 2 I.F. of Building Perimeter
 1,084 I.F. / 2 = 542 Shrubs
 Provided - 542 Shrubs

Native Plants
Trees:
 Required: 50% of all required trees shall be native
 Total Trees = 141 (71 = 50%)
 Provided: Native Trees = 71 / 141 = 50%

Shrubs:
 Required: 25% of all required shrubs shall be native
 Total Shrubs = 1,640 (410 Minimum)
 Provided: Native Shrubs = 410 = 25%

Flowering Trees
 Required: 20% of all required trees shall be flowering
 Total Trees = 141 (Not including Palms) x 20% = 28
 Provided: Flowering Trees = 28 = 20%

Landscape Island Evergreen Shade Trees
 Required: 75% of all required trees located within landscape islands shall be evergreen shade trees
 Total Landscape Islands = 24 x 75% = 18 Trees
 Provided: Landscape Islands with Evergreen Shade Trees = 18 = 75%

Tree Species Mix
 Required: When 41+ trees are required the minimum species mix = 5
 Provided: 9

Total Trees:
 Total Trees Required: 134
 Total Trees Provided: 134
 131 Planted Trees + 3 Existing Trees + 0 Palms @ 2:1 = 0 Trees = 131 Tree

Total Shrubs:
 Total Shrubs Required: 1,640
 Total Shrubs Provided: 1,640

*** Note:**
 Some trees relocated due to site constrains such as utilities,

Landscape Specifications

1. All tree and plant material to be Florida No. 1 or better, as classified in "Grades and Standards for Nursery Plants" Part I and Part II, State of Florida, Dept. of Agriculture, Tallahassee. All plants not listed in "Grades and Standards for Nursery Plants" shall conform to a Florida No. 1 as to: (1) health and vitality, (2) condition of foliage, (3) root system, (4) freedom from pest or mechanical damage, (5) heavily branched and densely foliated according to the accepted normal shape of the species.
2. Understoring or substitution of one species or cultivar for another species is a breach of contract and will be "Rejected" at the time of final landscape inspection unless approved by Landscape Architect.
3. Project Warranty: All plant material shall be warranted for a period of one (1) year after date of substantial completion against defects, including death and unsatisfactory growth, except for defects resulting from abuse or damage by others or unusual phenomena or incidents which are beyond the contractor's control.
4. Any and all conditions which the contractor feels will be detrimental to the success of the planting shall be brought to the owner or representative's attention.
5. The contractor shall verify the location of underground utilities prior to commencing work on any project area.
6. Mulch planting areas with 2" layer of Melaleuca, Eucalyptus, or Enviro-mulch. Cypress Mulch is NOT ACCEPTABLE. Planting beds to receive mulch throughout entire bed area.
7. All plants to be set to ultimate grade. No filling will be permitted around trunks or stems. Mulch to be kept a minimum of 2" away from trunks and stems.
8. Planting trees and shrubs: Excavate hole per planting detail. When plant is set, place additional backfill consisting of a 50% mixture of Peat humus and natural soil around the base and sides of ball, and work each layer to settle backfill and eliminate voids and air pockets. When excavation is approximately 2/3 full, water thoroughly before placing remainder of backfill. Water again after placing final layer of backfill and before installing mulch.
9. Guy and stake trees in 3 directions with galvanized wire, through flexible hose chafing guards, with wooden stake anchors. Immediately after planting, (See Detail).
10. Trees and shrubs shall be fertilized with a complete natural organic fertilizer with a ratio of approximately 3:0:2 or 3:0:3 (e.g. one labeled 12-0-8). Similar analysis such as 16-0-8 (4:0:2) can also be used. Fertilizers that are slow release, controlled release, sulphur coated or with nitrogen as IBDU or ureaformaldehyde have extended release period. Thirty to fifty percent of the nitrogen should be water insoluble or slow release.

Palms should receive a complete granular fertilizer formulated for palms ("Palm Special") at a rate of 5 to 8 lbs. per palm.

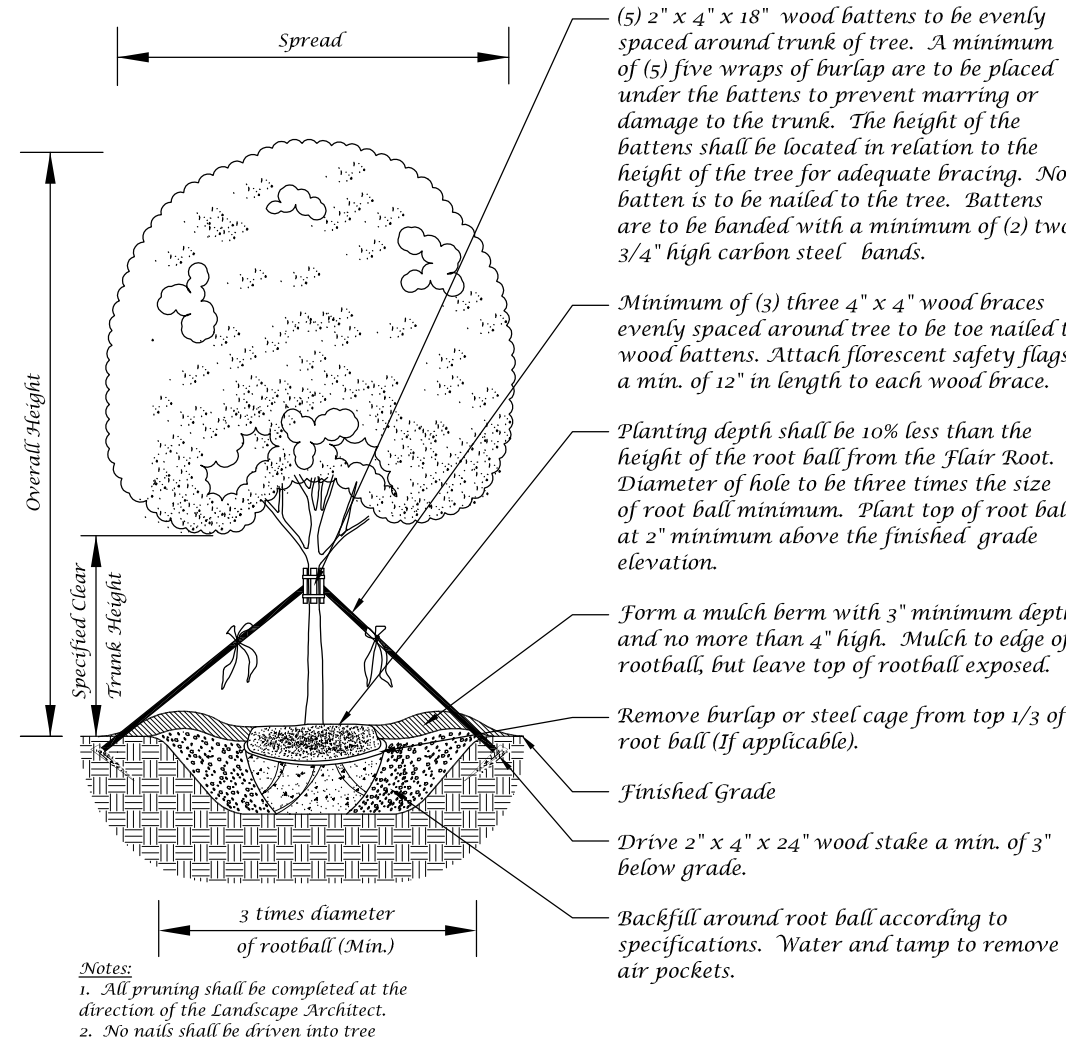
Agiform 20-0-5 twenty-one gram planting tablets may be substituted for granular fertilizer. If utilized, the following rates shall be utilized: Position plant in hole. Backfill halfway up the rootball. Place tablet(s) beside rootball about 1" from root tips. Do not place tablet(s) in bottom of hole.

1 Gallon 1 Tablet
3 Gallon 2 Tablets
25 Gallon & B&B Trees 2 per 1" caliper

11. All planting areas and sod to be irrigated to provide 100% coverage. Shop drawings to be submitted by the irrigation contractor for approval prior to installation.
12. Maintain trees, shrubs, and other plants by watering, cultivating, and weeding as required for healthy growth. Restore planting saucers and mulch. Tighten and reset stake and guying and reset trees and shrubs to proper grade or vertical position as required. Spray as necessary to keep trees and shrubs free of insects and disease. The contractor shall begin maintenance immediately after planting and shall continue maintenance through final acceptance when Certificate of Occupancy is issued to the General Contractor by City and project is released by the General Contractor to Client.
13. Prune trees and shrubs only to remove damaged branches as directed by the Landscape Architect.
14. Planting Lawns: Provide clean, strongly rooted, uniformly sized strips of Stenotaphrum secundatum Floritum (unless otherwise noted), machine stripped not more than 24 hours prior to laying. Grade and roll prepared lawn surface. Water thoroughly but not to create muddy soil conditions. Lay sod strips with tight joints, roll or lamp lightly, and water thoroughly.
15. Maintain positive drainage, no planting is to block drainage.
16. Drainage Testing
Prior to planting of trees, palms, and specimen material, each planting pit shall be tested in the following manner to verify adequate drainage.
A) Dig each planting pit to the minimum specified size.
B) Fill the planting pit with (12") twelve inches of water. If the water level in the planting pit drops (4") four or more inches within (4) four hours, the drainage is sufficient and a drainage channel is not required. If its water level drops less than (4") four inches within the (4) four hour period, then a drainage channel is required.
C) When a drainage channel is required, the drainage channel must extend down through the non porous soil and into porous soil. (See Drainage Testing Detail)
D) Discard all material removed from the drainage channel.
E) When backfilling the planting pit, add coarse gravel to the drainage channel. Also, care must be taken to keep the consistency of the soil mix the same throughout the planting pit.

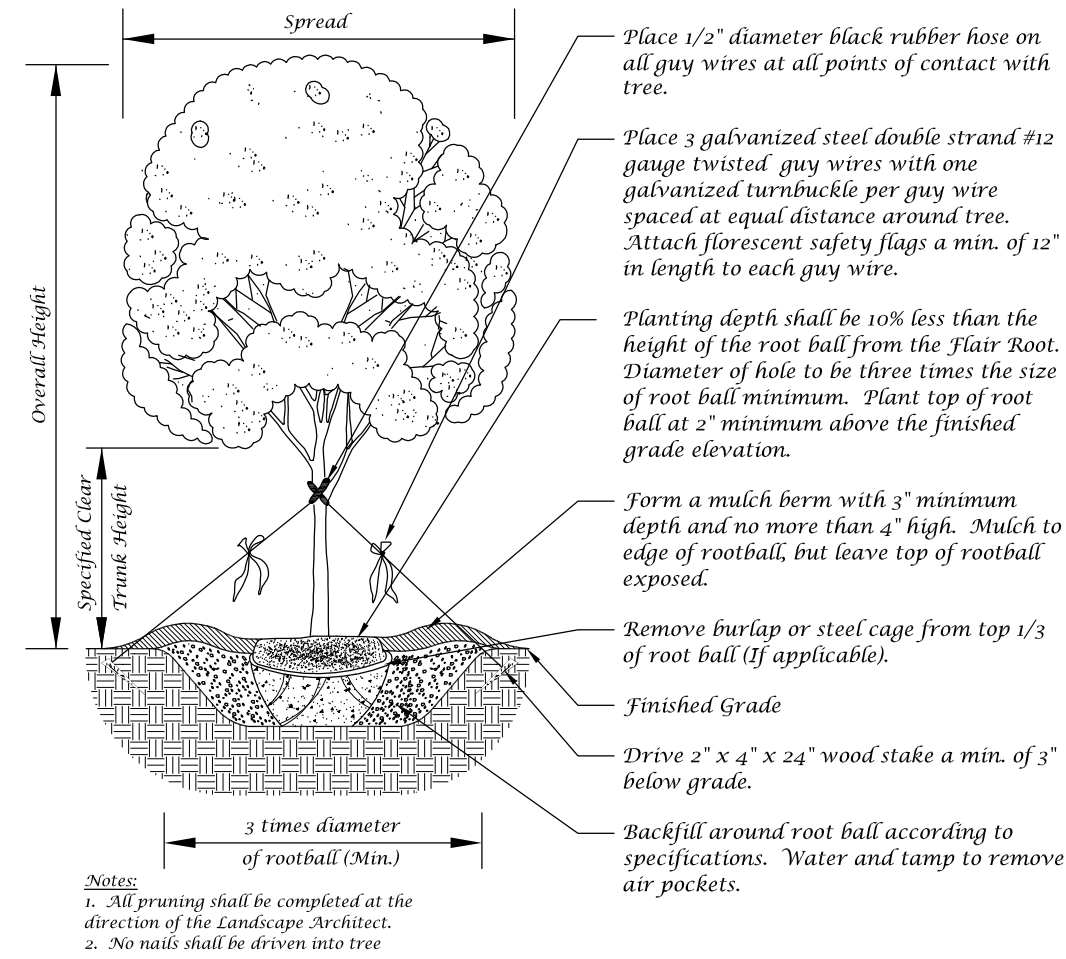
- NOTES:
1. Contractor to include drainage testing for all trees and palms in bid. If drainage is inadequate, the soil specification in item #8 above shall be revised for site conditions. Contractor shall notify the Owner and Landscape Architect of poor drainage conditions in writing and written direction will be provided to the contractor of appropriate soil mixture specification to be used.
 2. All Fertilizers shall meet the City of Port St. Lucie's fertilizer ordinance.

Landscape Details



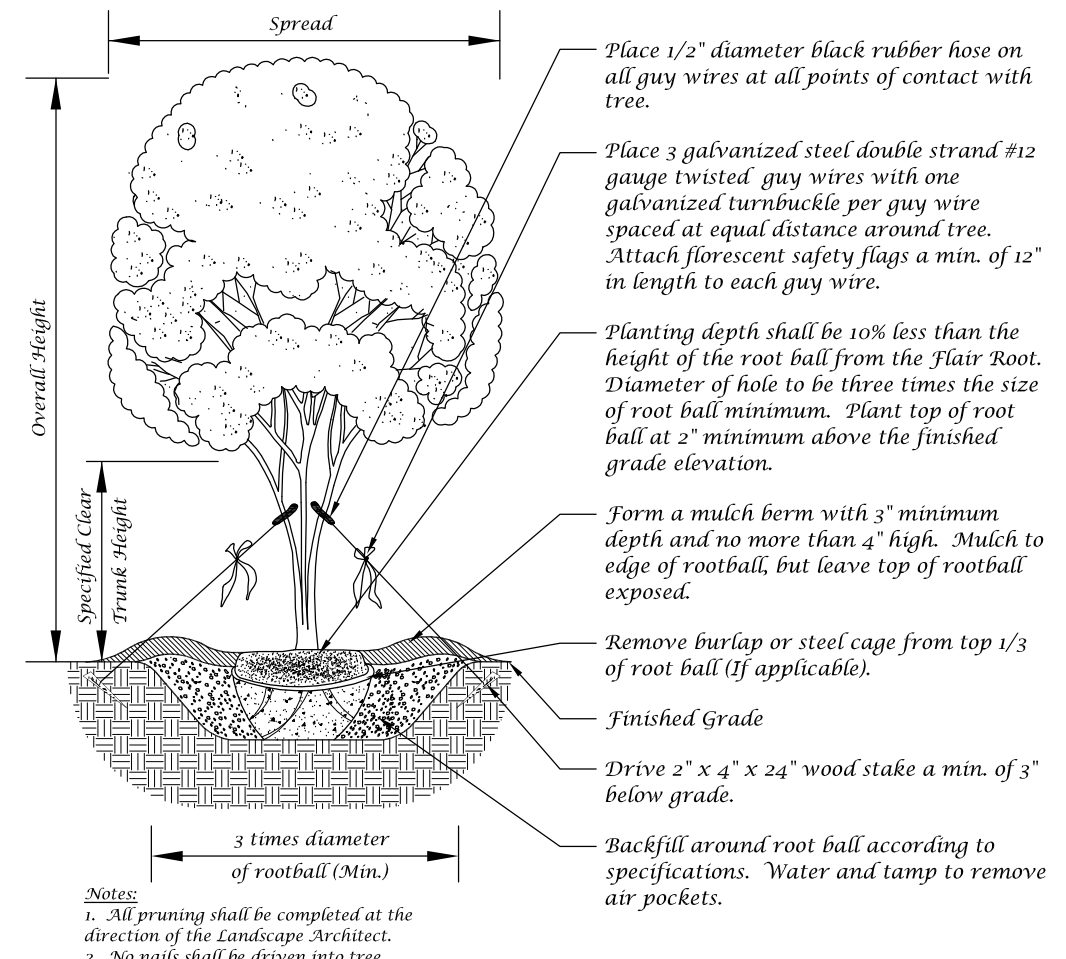
Large Tree Planting Detail (5" Caliper or Greater)

Not to Scale



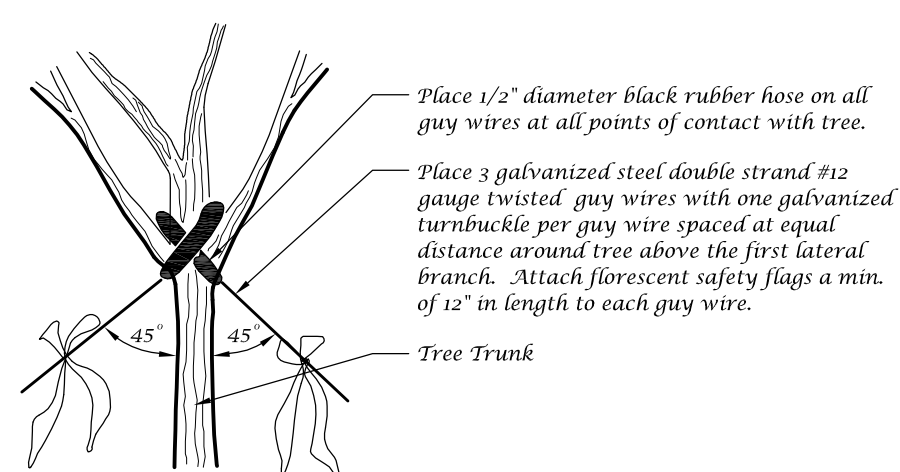
Tree Planting Detail

Not to Scale



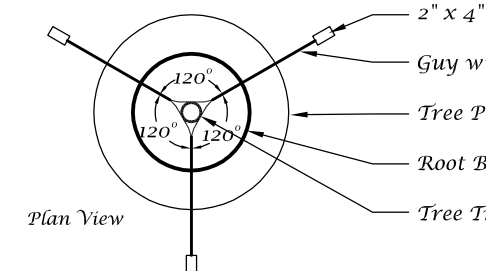
Multi-Trunk Tree Planting Detail

Not to Scale



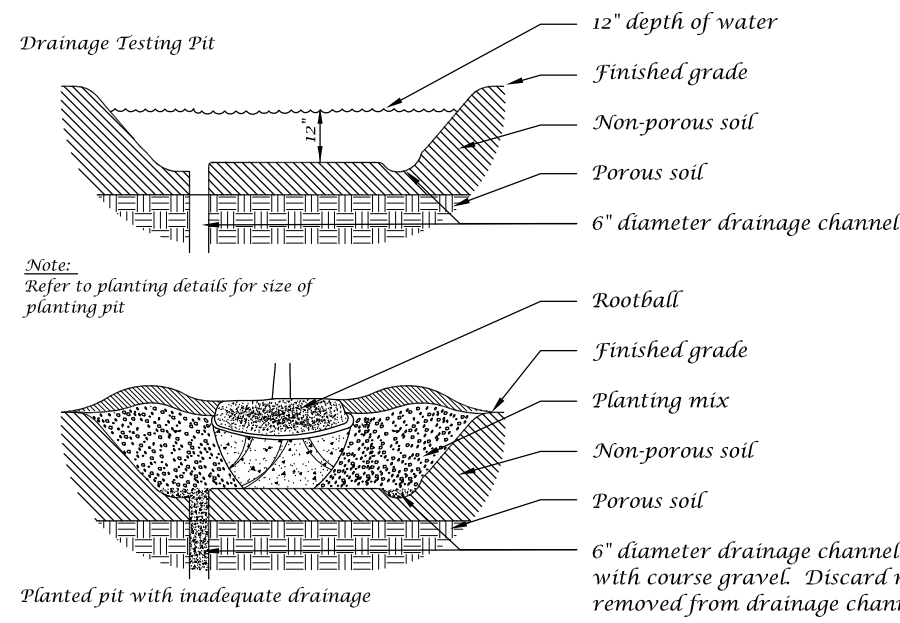
Guy Wire Attachment Detail

Not to Scale



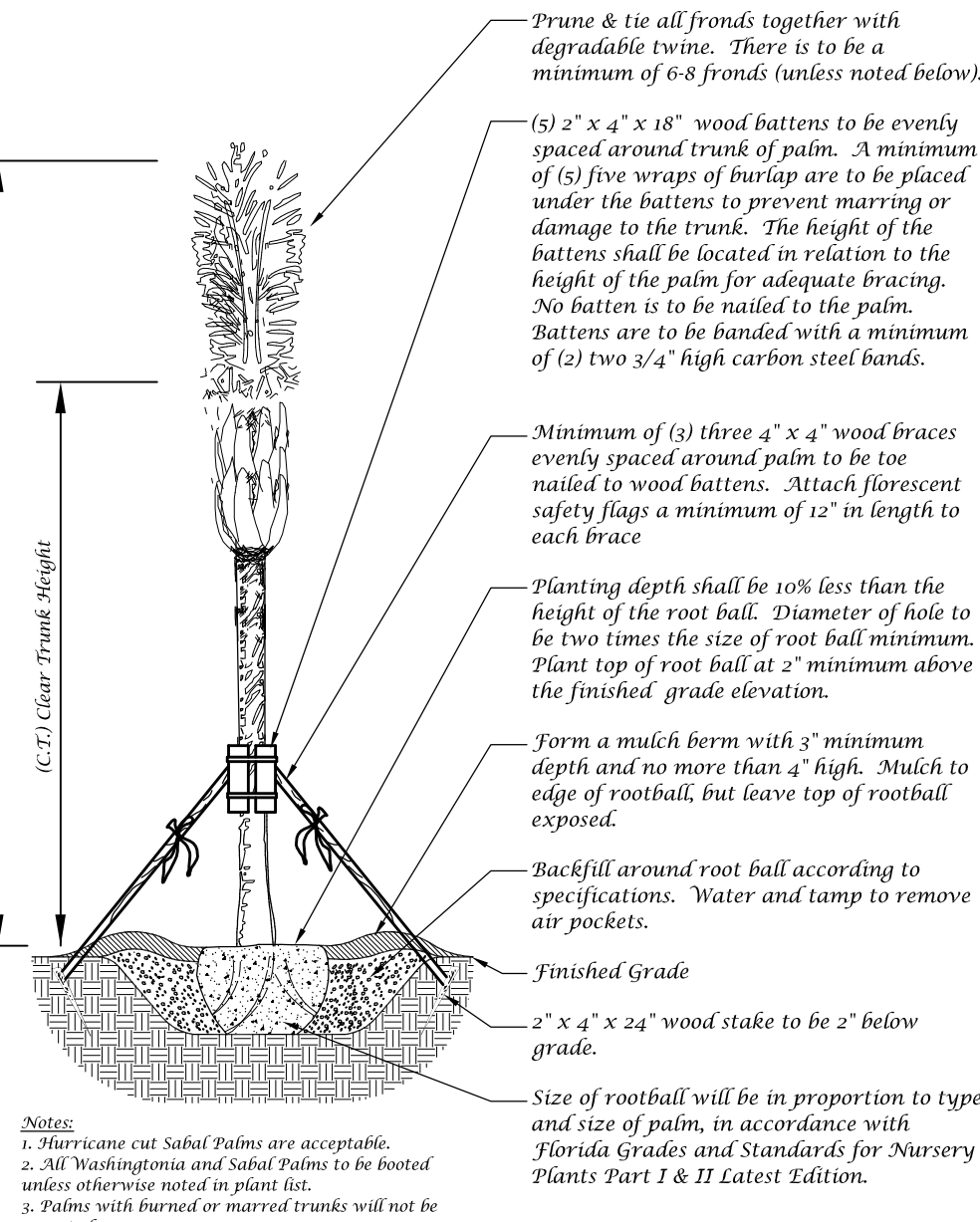
Staking Detail

Not to Scale



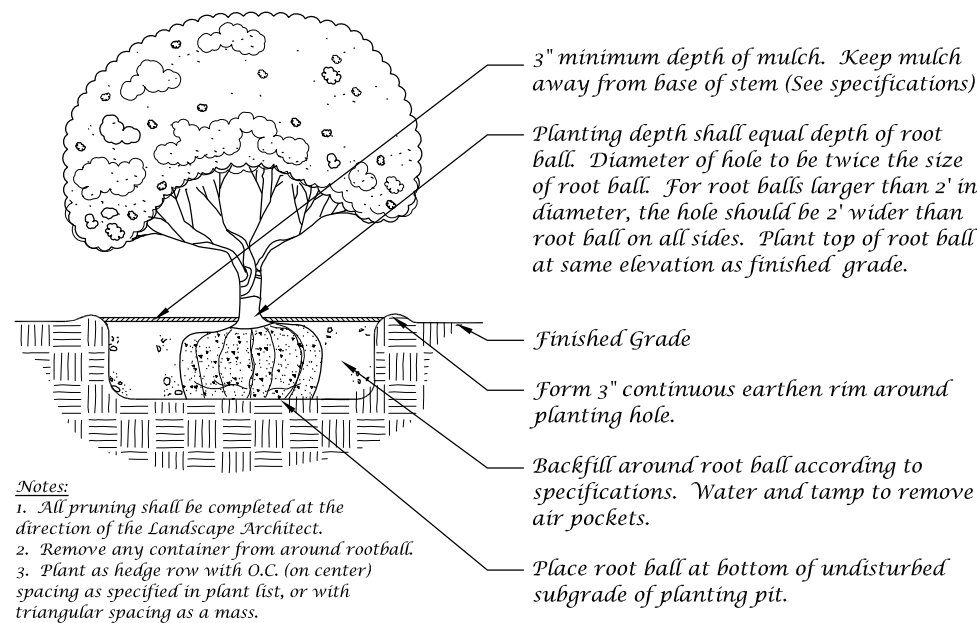
Drainage Testing Detail

Not to Scale



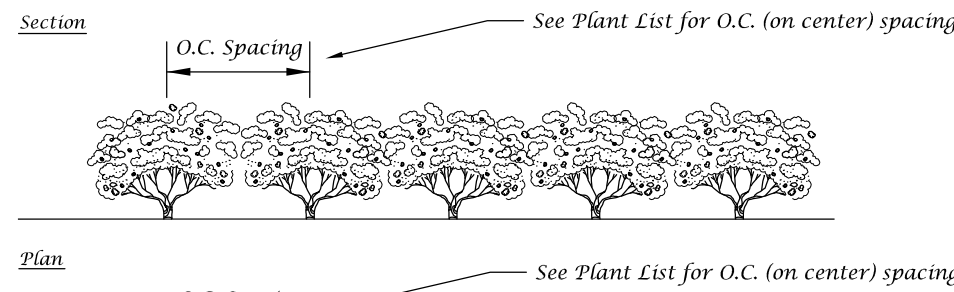
Palm Planting Detail

Not to Scale



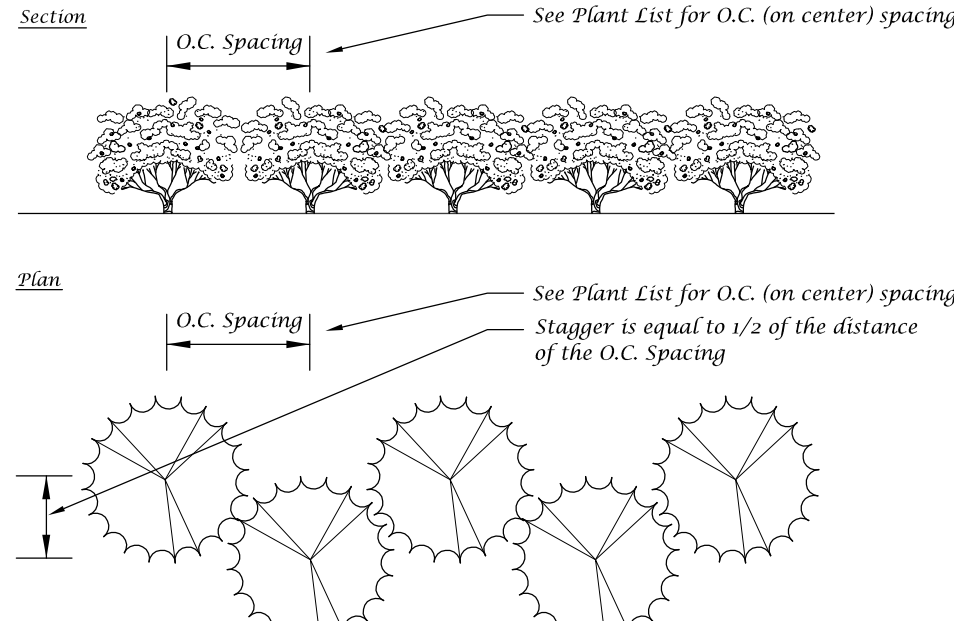
Shrub Detail

Not to Scale



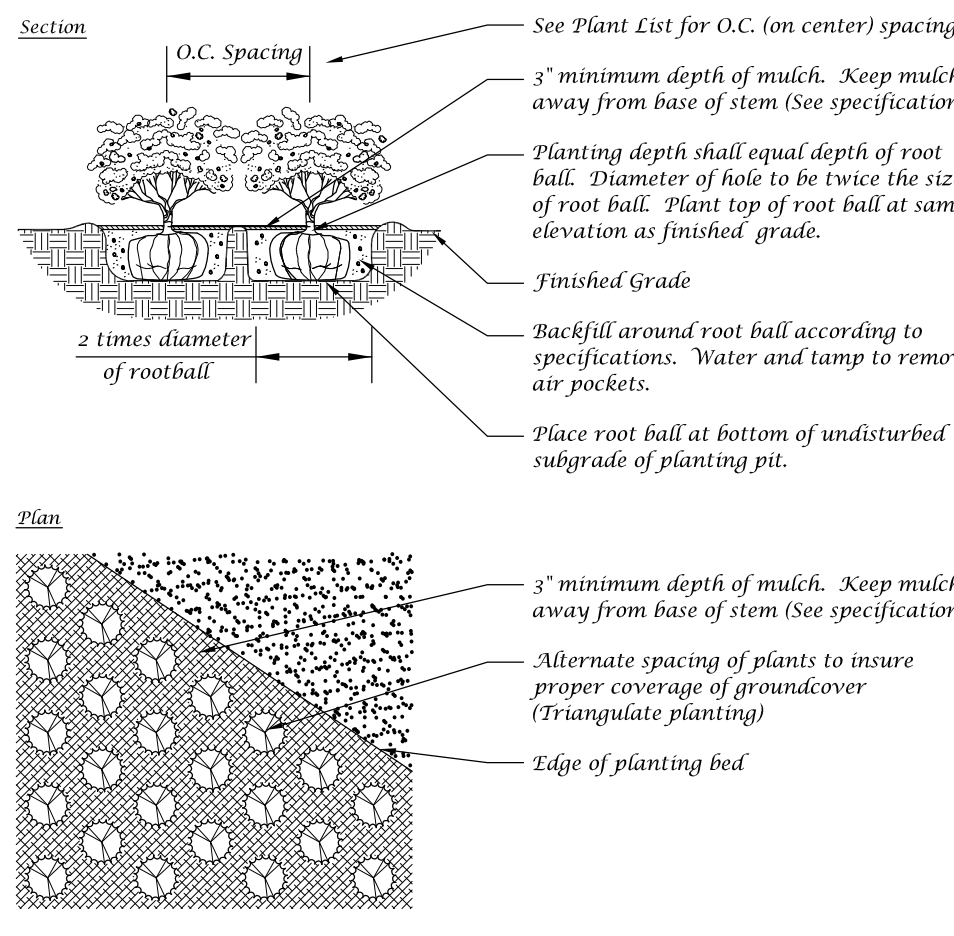
Standard Hedge Shrub Detail

Not to Scale



Staggered Hedge Shrub Detail

Not to Scale



Ground Cover Detail

Not to Scale



Conceptual Design Group, Inc.

Landscape Architecture - Site Manning

900 East Ocean Boulevard, Suite 130d
Stuart, Florida 34994
(772) 344-2340
LA: 0001635

Darwin Autism Charter School

Lot - 1

City of Port St. Lucie, Florida

Jeffrey W. Smith, RLA
Florida Registration Number:
LA 0001635

Job No. 25-0103
Drawn By JWS
Submittal Dates 7-15-2025
9-2-2025
9-10-2025

Revision Dates
New Base 9-2-2025
City Comments 9-10-2025

These drawings are the property of the landscape architect and are not to be used for other projects except by written permission from the landscape architect. Report any discrepancies immediately to the landscape architect.

Sheet L-5 of 5
City Project Numbers: P 25-020

Landscape Plan